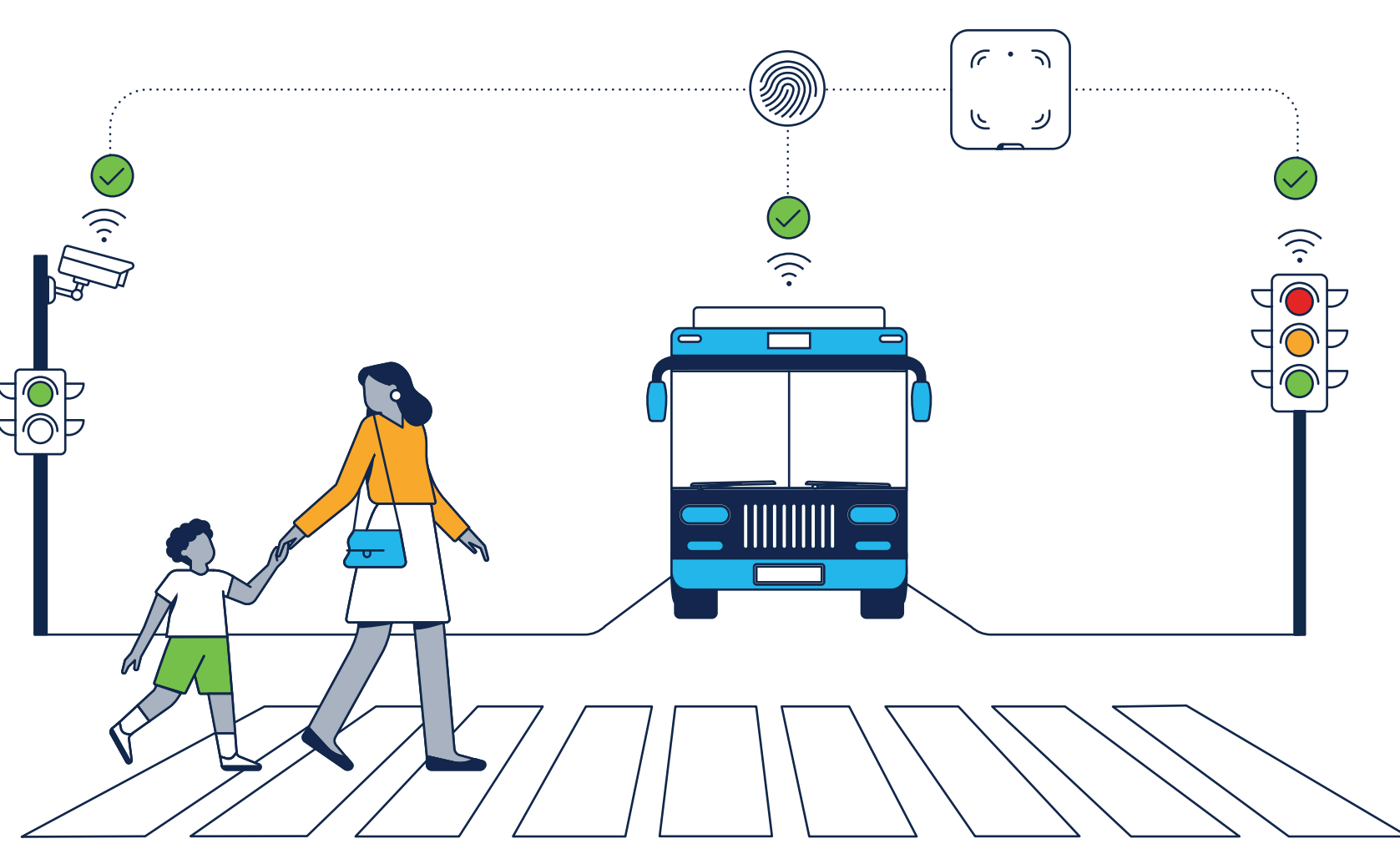
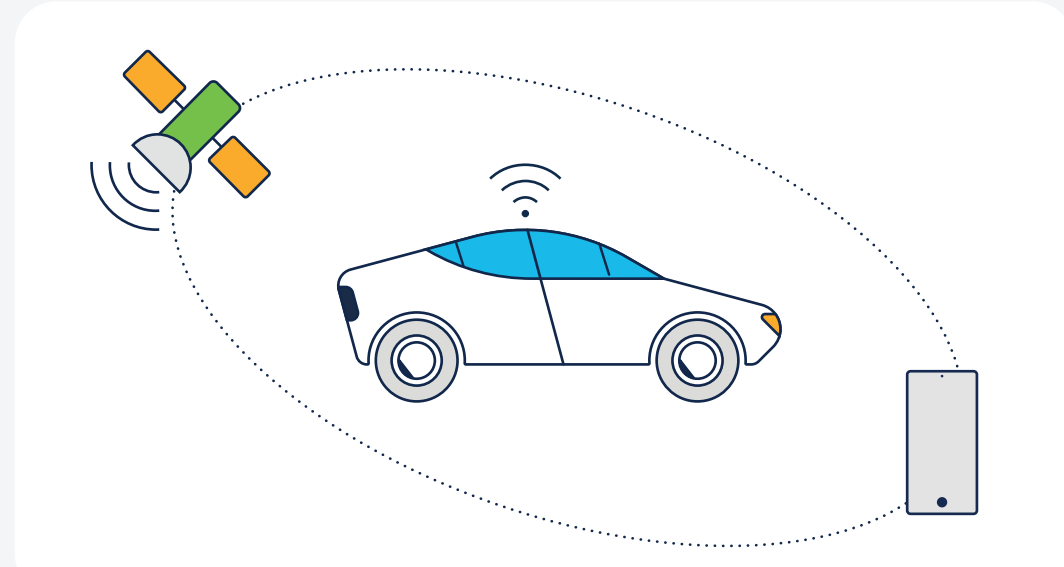


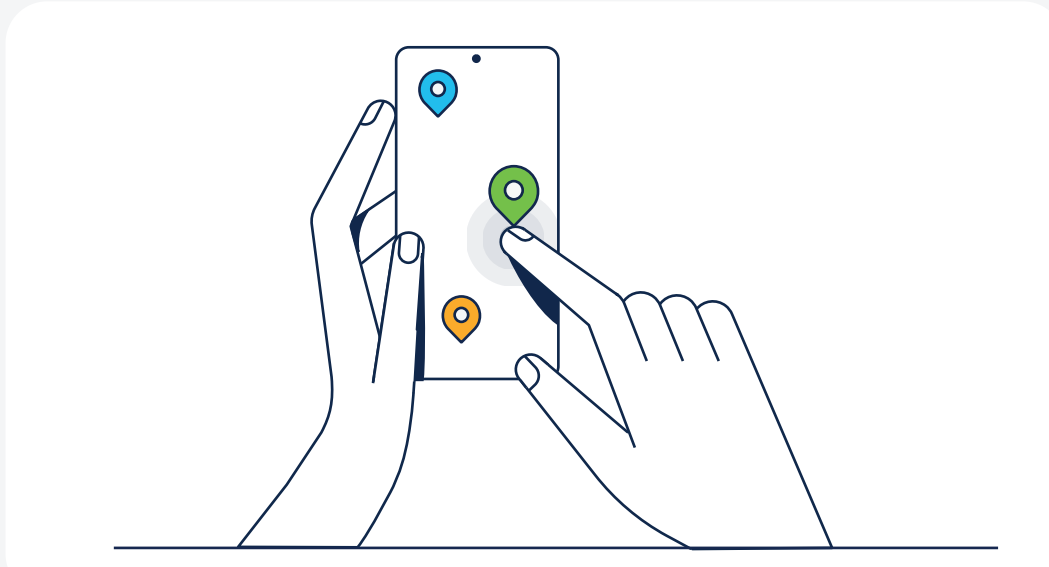
Ready To Connect Your Roadways and Intersections?



Cities, transportation departments, and highways agencies are seeing emerging use cases



Connected vehicles
Connected car trends, such as autonomous driving and vehicle-to-everything communication will have profound implications for our future.

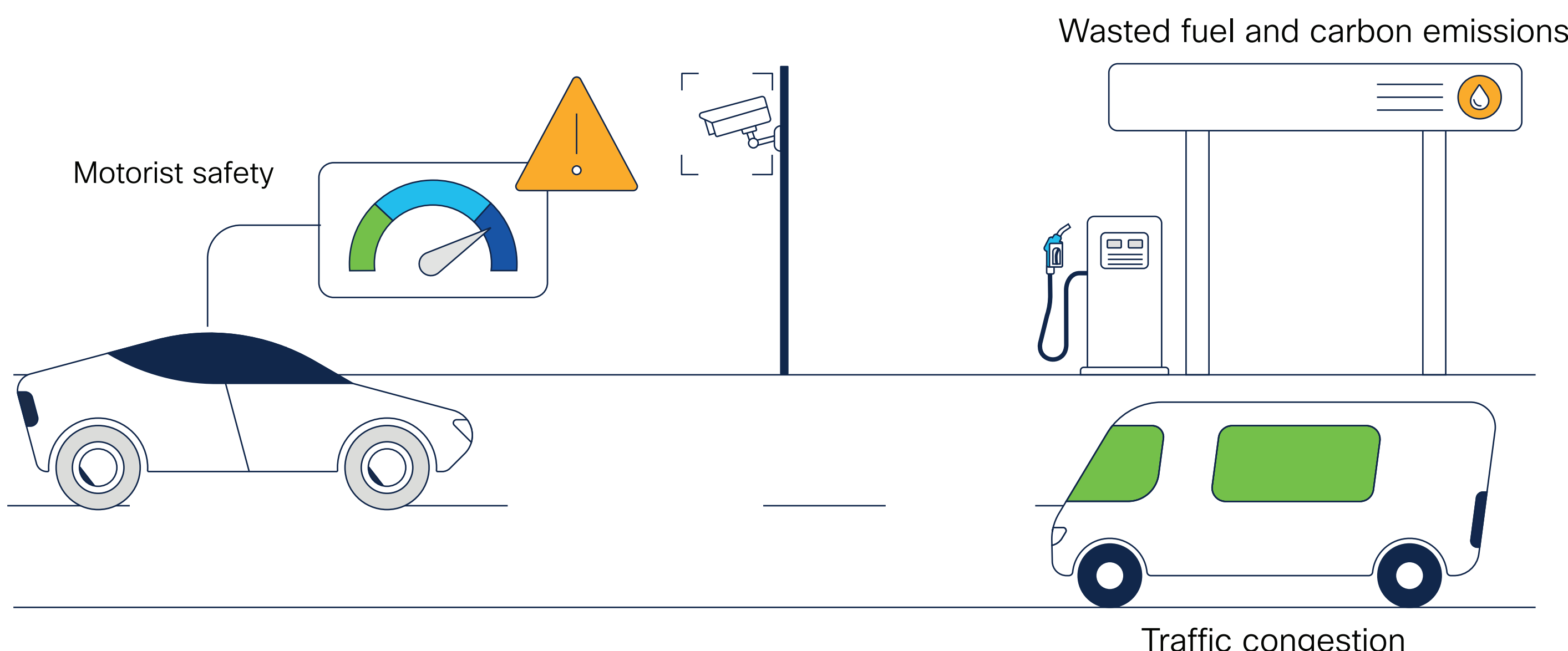


Mobility as a service
Building a safe and modern passenger experience is essential across different modes of transport.



Electrification
The need to meet sustainability goals is driving an increased need for charging infrastructure at scale.

Today's transportation challenges



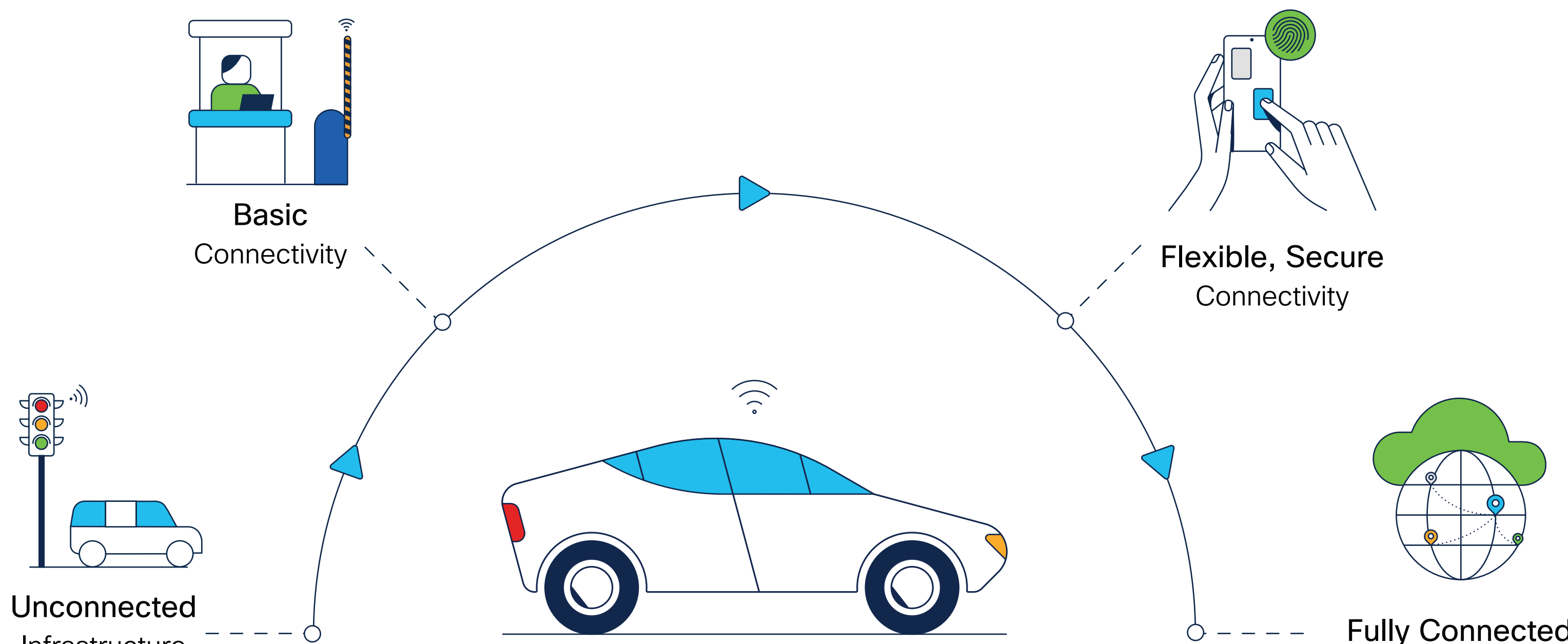
Traffic fatalities in the US were up 19% in 2022 vs. 2019. (Source: INRIX)

Congestion cost US drivers more than \$81bn, UK drivers nearly 9.5 bn GBP, and German drivers 3.9 bn Euros in 2022. (Source: INRIX)

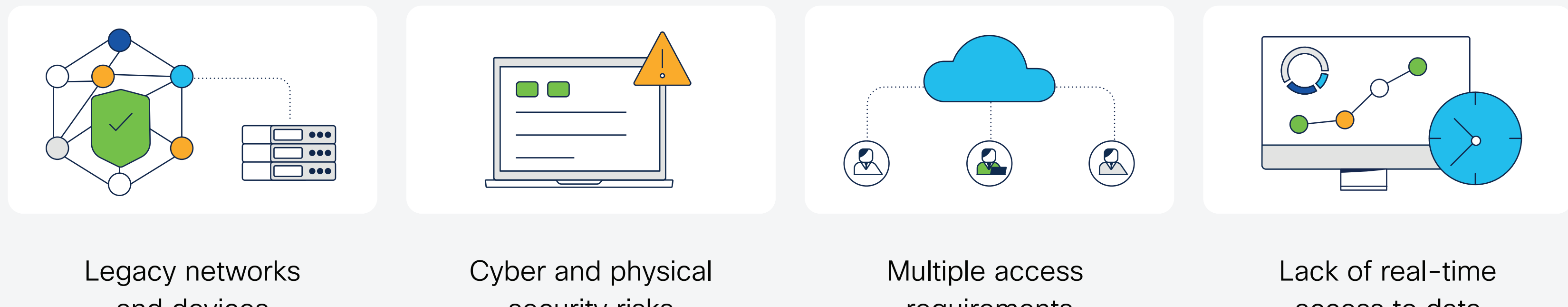
A typical US driver lost 51 hours due to congestion in 2022, up 30% over 2021. (Source: INRIX)

EU greenhouse gas emissions from transport increased by 2.7% in 2022. Road transport contributes 76% of all EU transport emissions. (Source: European Environment Agency)

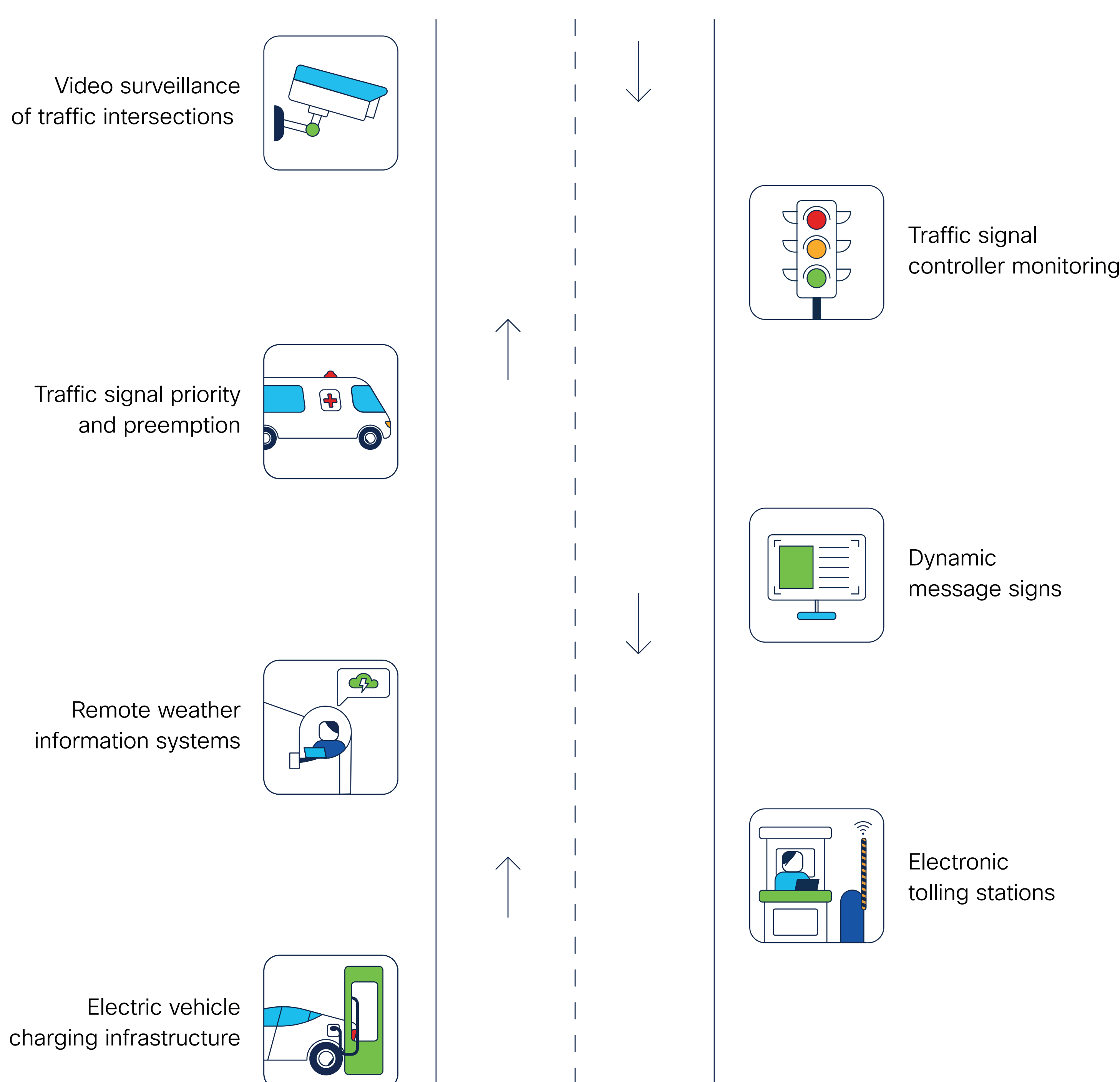
In the journey to modern connectivity, customers are in different phases



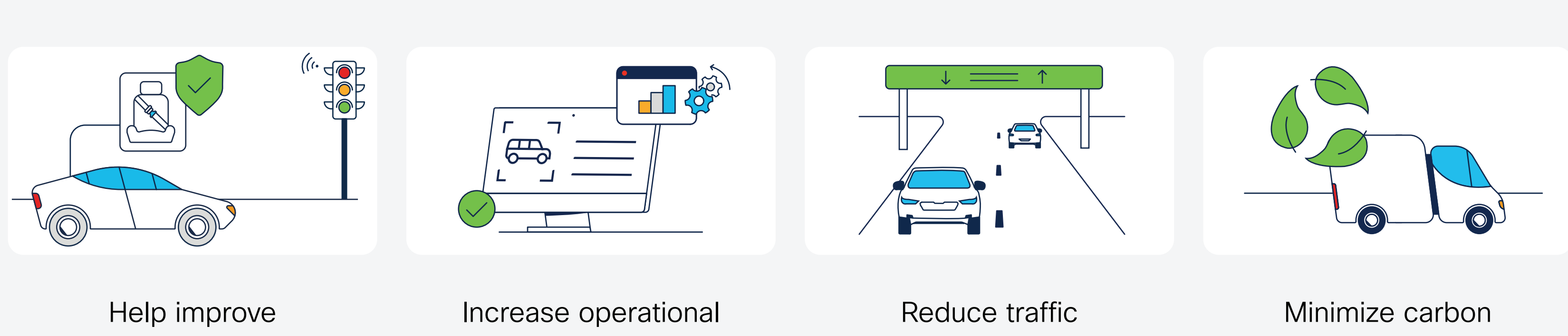
In every journey there are potential roadblocks



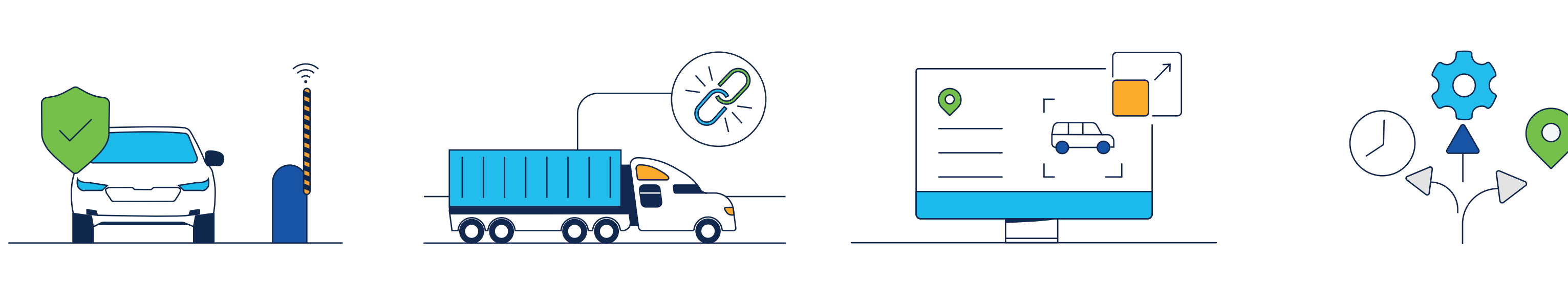
Get moving with Cisco's complete industrial networking portfolio to support a variety of use cases



Modern connected roadways and intersections



Cisco provides secure, reliable connectivity for Intelligent Transportation Systems



Only Cisco offers a complete industrial networking portfolio to meet your needs.

Pick from a variety of connectivity options to meet your roadways needs



Contact us today to get started

[Get Started](#)