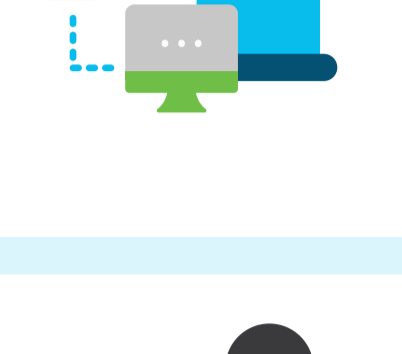


Security for Today's Digital Factories

Protect the manufacturing process from end to end



Benefits of Cisco connected factory security



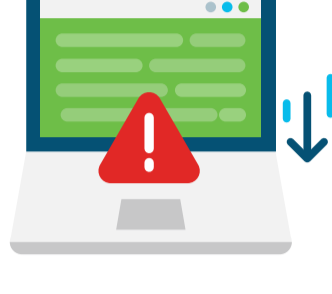
Securely connect

Securely connect things, machines, workflows, databases and people, who are on plant networks with those on enterprise networks. See new patterns, and optimize operations and supply chain workflows.



Share

Share intellectual property securely with global employees, partners, and vendor ecosystems, helping scale expert resources.



Reduce risk

Industrial PC virtualization helps reduce risk by streamlining your operating system and software patch updates.



Safety

Minimize operational risk to plant equipment and employee safety.



Protect

Protect intellectual property.



Adhere

Adhere to regulatory requirements.

Did you know?

Manufacturing is



- Second in percentage of spam in email by industry.
- Third in spear-phishing.
- One of the top three industries targeted in cyberespionage³.

More than 1,000 IACS were targeted by the Dragonfly espionage malware program in 2014.



20% increase in 2015 in cyber attacks on the U.S. manufacturing sector¹.



72% of manufacturers believe the main purpose of security is to reduce risk versus being a competitive advantage².



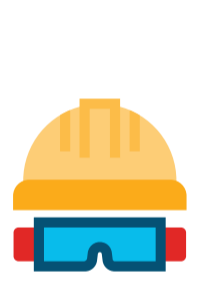
What's the impact of a security breach?



Loss of proprietary or confidential information and intellectual property.



Sabotage of safety systems.



Health and safety risks for workers.



Damaged brand, and loss of public confidence.



Physical or environmental damage and violation.

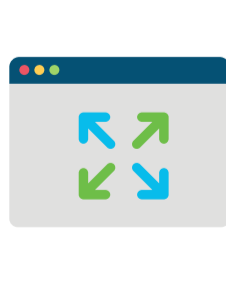


Economic loss: downtime, disrupted production schedules, and damaged machines/Lost revenue and market-share growth.

Who is behind these attacks?



Why are industrial networks vulnerable?



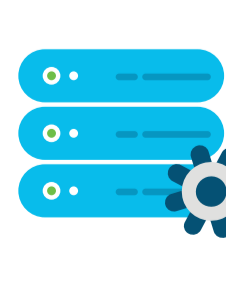
New attack vectors with enterprise and operations convergence.



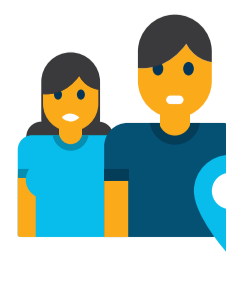
Islands of vulnerability on factory floors.



New Internet of Things (IoT) landscape with millions of connected machines globally.



Legacy industrial control systems.



Extended plant-floor access for partners and vendors across multiple sites.

[Learn more about Manufacturing Security](#)