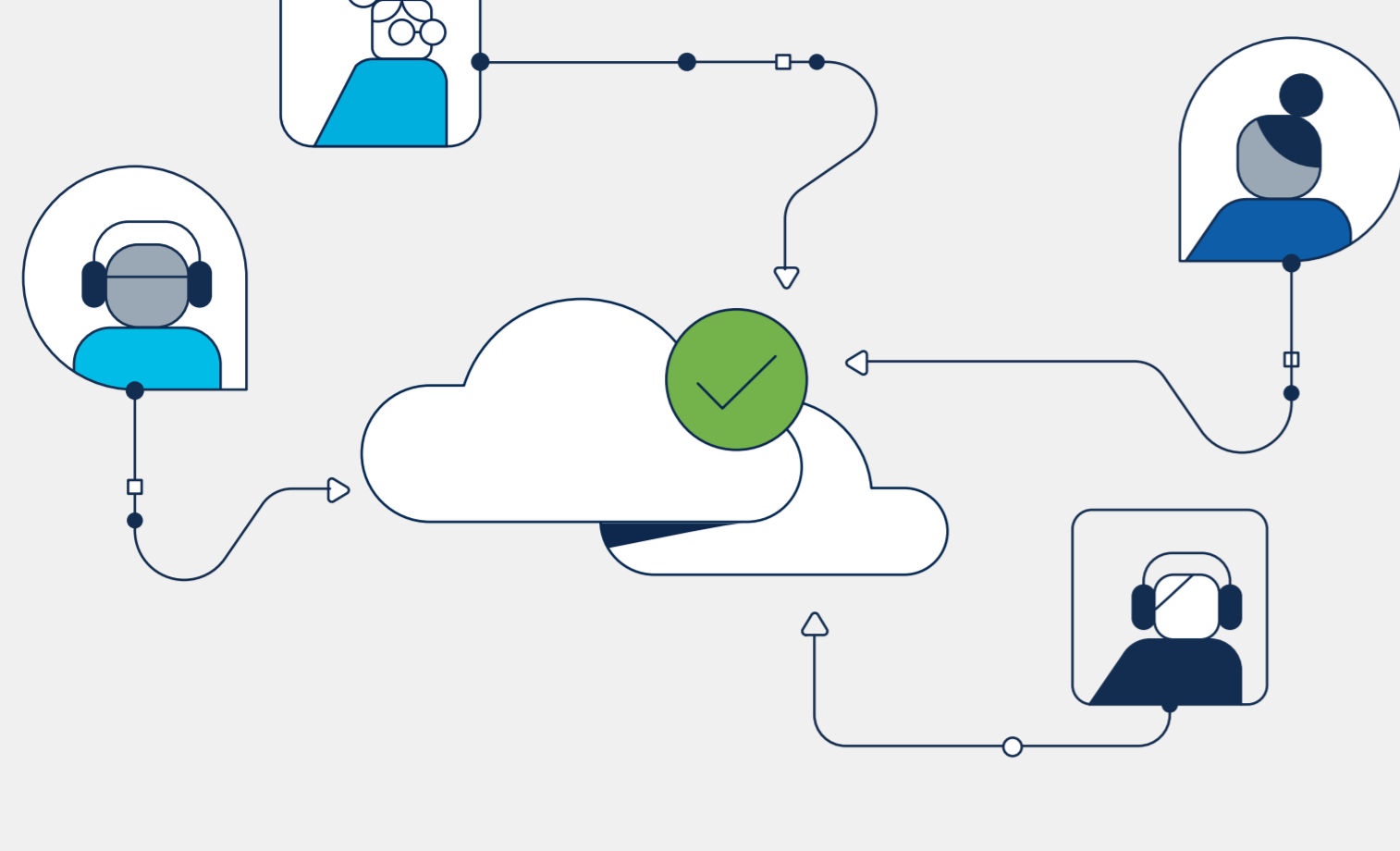


Work Is Changing. Is Your Network Ready?

People want to be protected, productive, and engaged wherever they choose to work.



A distributed workforce needs a network that works for it



- Organizations are adopting hybrid work models.
- The return to the office is in full swing.
- And personal safety and wellness are top of mind.

Most employees expect increased work flexibility (64%).¹

Organizations' highest focus is on improving workplace safety measures (87%) as they transition back to the workplace.¹

58% will work 8 or more days each month from home (Post-COVID).²

Employees want intelligent workplace technology (96%)² for a better work environment.

To keep up, networks need to power hybrid work solutions that are

Inclusive
by enabling consistent application experiences for users anywhere.

Flexible
by adapting to users needs as they move between locations and applications.

Supportive
by enabling workspaces designed for safety and wellbeing.

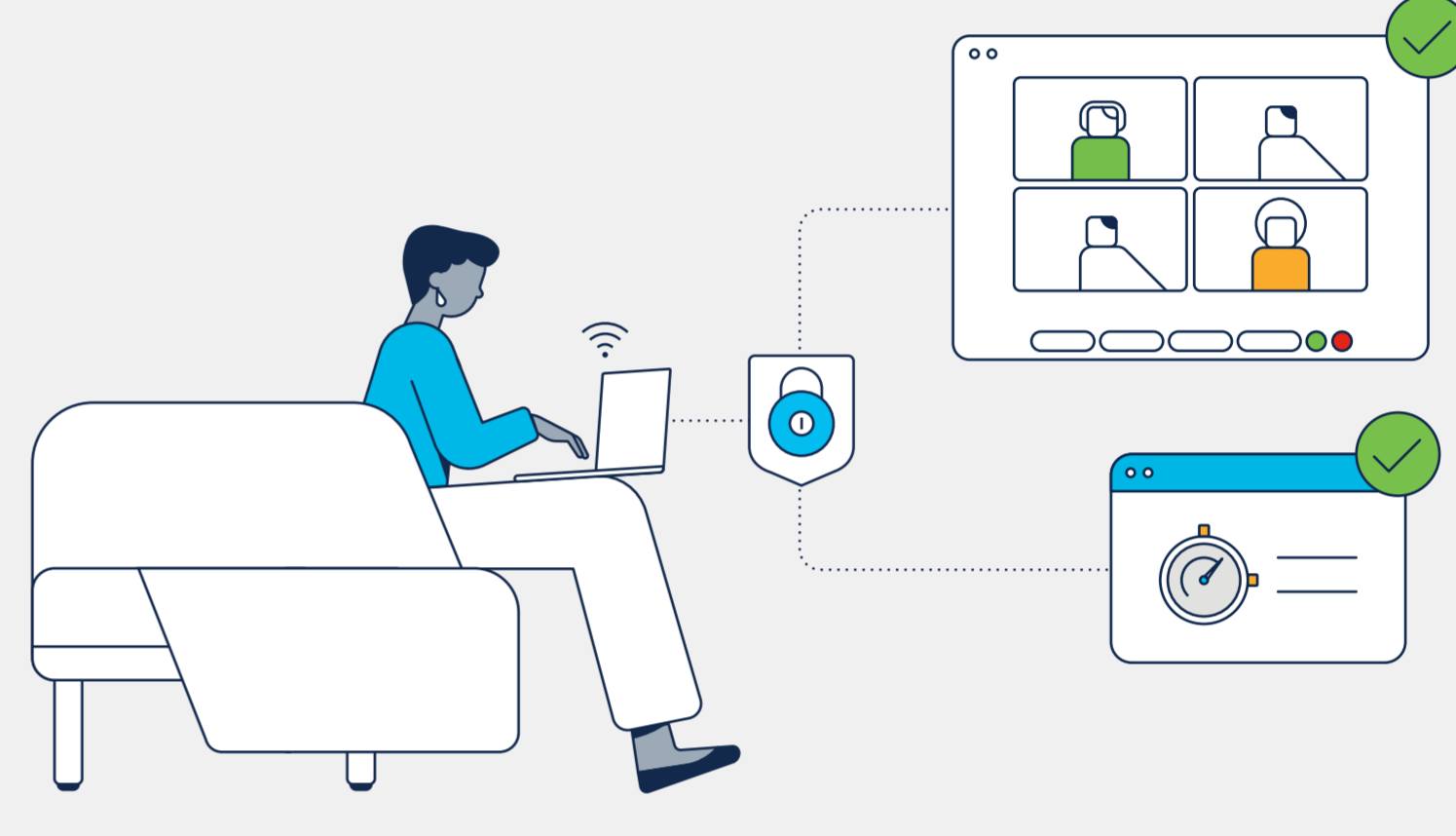
Secure
by enhancing the security of employees and their data wherever they work.

Managed
by using automation and AI-enabled insights to increase agility and resilience.

Explore how Cisco Networking Solutions for hybrid work enable you to reinvent the future of work

For the hybrid workforce

- Offer flexible, secure remote access for an uninterrupted employee experience.
- Stay productive by connecting your distributed workforce to collaborate effectively.
- Optimize every application experience with real-time performance monitoring.



Networking solution for remote worker access



Hybrid workforce wireless solution

- Expand corporate network connectivity and policies to hybrid workspaces.
- Provide zero-touch and identity-based onboarding of wired and wireless devices.
- Enable a seamless application experience for users as well as centralized orchestration for IT.

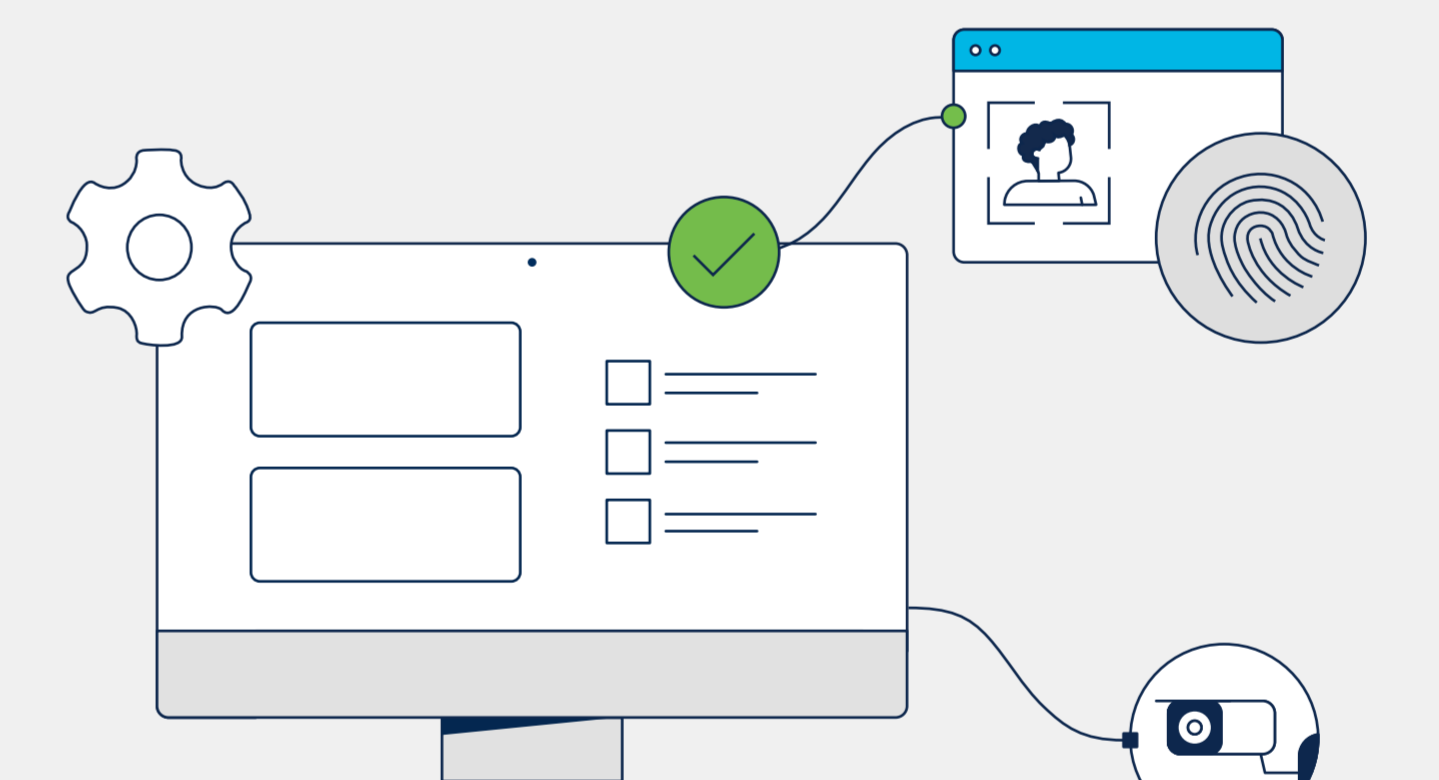


Hybrid workforce routing solution

- Optimized application experience with seamless connectivity to cloud and SaaS
- Integrated Secure Access Service Edge (SASE) architecture for unified security policy and compliance across a hybrid workforce
- End-to-end automation of hybrid work routing solutions with centralized visibility and control
- Scalable SD-WAN Remote Access and hardware options that accelerate the transition to hybrid work where and when it is needed

For hybrid workspaces

- Provide consistent, identity-based secure access to the network for users and devices.
- Gain social density insights for safe working conditions in the office, retail stores, or any public places.
- Use proximity reporting to respond effectively to reported incidents and help ensure workplace safety.
- Enable smart building services by using policy automation, and advanced switches to securely onboard IoT devices such as cameras, asset tracking sensors, and smart lighting.



Hybrid workspaces are powered by



Cisco Spaces

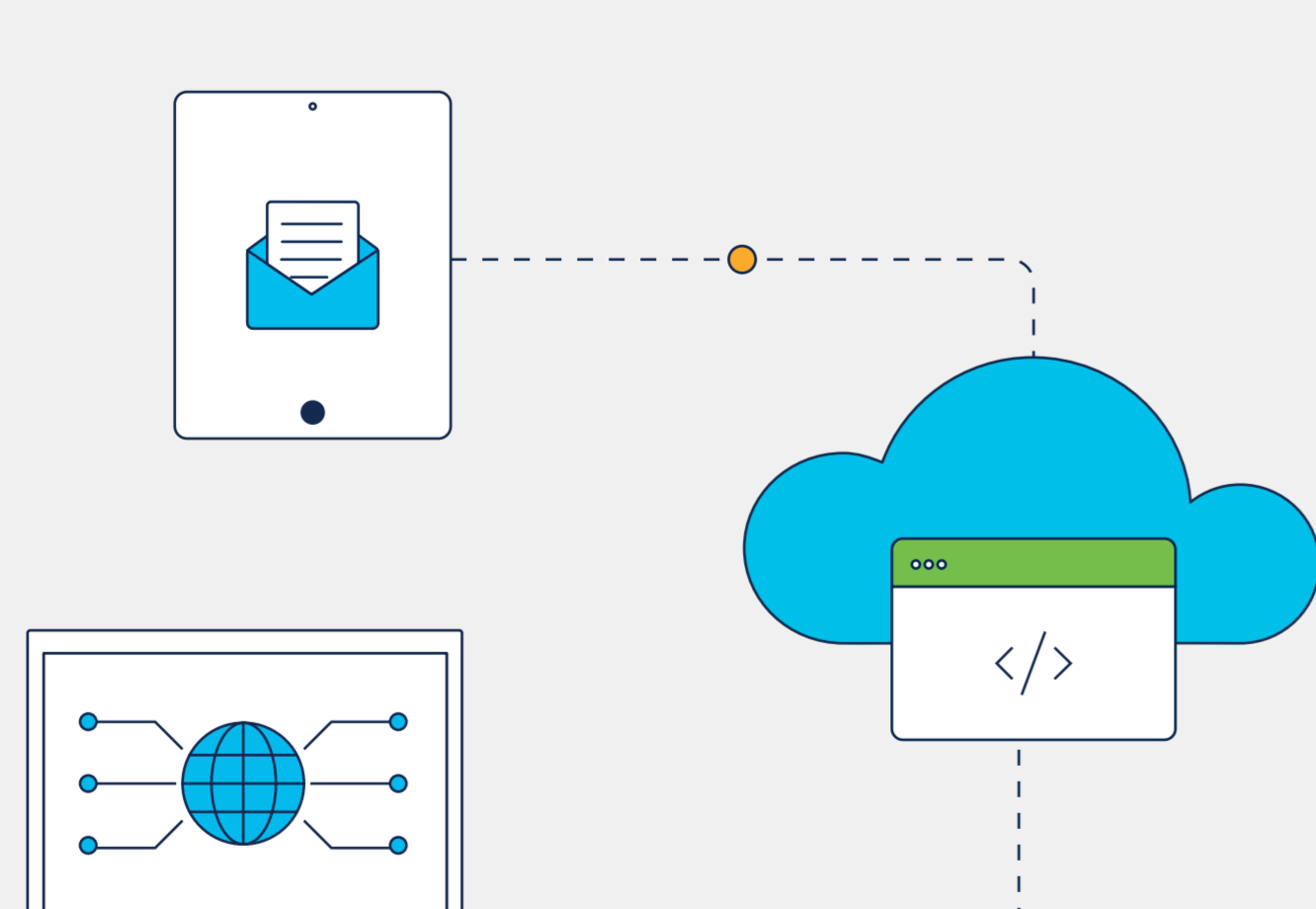
Next-generation indoor location services cloud platform



Cisco Secure Network Access Infrastructure

With Cisco Catalyst, Aironet or Meraki® Wireless and switching solutions

For employees accessing multicloud applications



- Provide secure and consistent multicloud access from any workspaces.
- Allow fast and frictionless deployment of new Software-as-a-Service (SaaS) and Infrastructure-as-a-Service (IaaS) apps.

Secure multicloud access is powered by



Cisco Catalyst SD-WAN

Connect any user to any application with integrated capabilities for multicloud, security, unified communications, and application optimization—all on a SASE-enabled architecture.



Secure Access Service Edge (SASE)

Provide consistent zero-trust secure access wherever users and applications reside.

With the right strategy, you can meet the challenges

Bring together your hybrid workforce and workspaces with the simplicity, agility, and resiliency you need to thrive.

[2023 Global Networking Trends Report](#)

[Networking solutions for hybrid work](#)

¹ IDC FutureScape: Worldwide Future of Work 2021 Predictions, 1 Oct 2020.

² Global Workforce Survey: The Rise of the Hybrid Workplace Report, 1 Oct 2020.