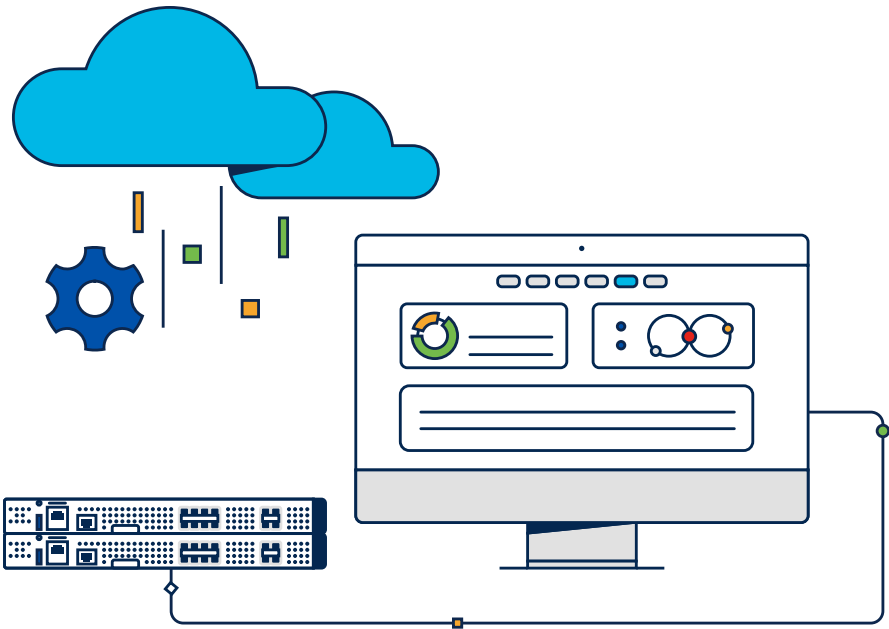




Cisco Switching Licensing Feature Matrix

For Cisco C9350 and C9610 Series Smart Switches



Feature	Cisco Switching Essentials	Cisco Switching Advantage	Perpetual or Subscription (Platform features via Meraki Dashboard/Catalyst Center)
Patch/SMU lifecycle management automation Automated management of SMU/patches via Cisco Catalyst Center/Meraki.	✓	✓	Subscription - Both
Basic Packet Capture (PCAP)	✓	✓	Subscription - Both
Software Image Management (SWIM) Automation Automate software upgrades and control the consistency of image versions through Cisco Catalyst Center or Meraki Dashboard.	✓	✓	Subscription - Both
Overall health dashboard Gives a high-level overview of the health of every network device/client on the network, wired and wireless, through Cisco Catalyst Center or cloud monitoring for Catalyst.	✓	✓	Subscription - Both
Overall health dashboard for device, network, application and client for 24 hours only Gives a high-level overview of the health of wired network devices/clients on the network, managed by Cisco Catalyst Center.	✓	✓	Subscription - Both
Network Plug and Play (PnP) provisioning application Zero-touch provisioning for new installation of Cisco devices to be provisioned simply by connecting them to the network, managed by Cisco Catalyst Center.	✓	✓	Subscription - Both
Cisco DNA Service for Bonjour LAN This software-defined, controller-based solution enables Bonjour services discovery and advertisement for local cache discovery and distribution functions between VLANs.	✓	✓	Subscription - Catalyst Center
Compliance - Regulatory/Basic HIPAA, EOL, PSIRT.	✓	✓	Subscription - Both
Basic Device 360, Client 360, and Network Health Insights Basic visibility like interface summary at the device and client level and across devices and clients.	✓	✓	Subscription - Both
Out-of-box reports Cisco Catalyst Center prebuilt reports that can be consumed directly or exported to third-party tools such as Tableau.	✓	✓	Subscription - Catalyst Center
Cisco AI Network Analytics AI and machine learning technologies are implemented on Cisco Catalyst Center and in the AI Network Analytics cloud to enhance the insight and remediation capabilities of Cisco DNA Assurance.		✓	Subscription - Catalyst Center
AI Endpoint Analytics Identifies and checks compliance of endpoints, and uses AI/ML techniques to classify them into groups.		✓	Subscription - Catalyst Center
Group-Based Policy Analytics Makes segmentation policy simpler by discovering traffic flows between scalable groups to determine the right policies.		✓	Subscription - Catalyst Center
AI Trust Analytics Verifies that connected endpoints are legitimate. Use this information to define security policies that isolate rogue or compromised endpoints to reduce threat proliferation.		✓	Subscription - Catalyst Center
LAN automation Automates configuration and deployment of networks with Cisco Catalyst Center.		✓	Subscription - Catalyst Center
Application policy creation Assigns policies to applications based on business relevance and business-critical QoS priority for life-saving devices, for example, through Cisco Catalyst Center.		✓	Subscription - Both
Application hosting automation and lifecycle management Automated container orchestration via Cisco Catalyst Center or the Meraki dashboard.		✓	Subscription - Both
Cisco DNA Service for Bonjour WAN This software-defined, controller-based solution enables Bonjour services discovery and advertisement at scale across multiple domains.		✓	Subscription - Catalyst Center
Application Visibility and Control (NBAR2) Automation through Cisco Catalyst Center to gain application visibility and control through Next-Generation Network-Based Application Recognition.		✓	Subscription - Both
Compliance - Advanced		✓	Subscription - Catalyst Center
Controller-PCAP: Proactive troubleshooting		✓	Subscription - Catalyst Center
Controller-orchestrated fabric management and configuration Any Cisco or third-party controller orchestrating a fabric-like EVPN, MPLS, etc.		✓	Subscription - Catalyst Center
Fabric, segmentation, and eWC Enables policy-based automation with secure segmentation, complete visibility, and delivery of new services quickly on SD-Access devices, managed by Cisco Catalyst Center only.		✓	Subscription - Catalyst Center
Cisco Spaces Connector Connector on the Switch to help integrate with Spaces.		✓	Subscription - Catalyst Center
Cloud-delivered security Cisco Umbrella integration for DNS security or Secure Internet Gateway (SIG).		✓	Subscription - Catalyst Center

Feature	Cisco Switching Essentials	Cisco Switching Advantage	Perpetual or Subscription (Platform features via Meraki Dashboard/Catalyst Center)
Patch/SMU lifecycle management Manual/CLI operations or through WebUI only. Automation through Cisco Catalyst Center not supported.	✓	✓	Perpetual
Essential switch capabilities Layer 2, OSPF, PBR, PIM Stub Multicast, PVLAN, VRRP, Cisco Discovery Protocol, QoS, FHS, 802.1X, CoPP, SXP, IP SLA responder, SSO, StackWise (Catalyst 9300/9200).	✓	✓	Perpetual
Layer 3 routed access Layer 3 routed access (RIP, EIGRP Stub, OSPF [1000 routes]).	✓	✓	Perpetual
Programmability, NETCONF/RESTCONF/gRPC/YANG Model-driven programmability lets you automate configuration and control of your network devices with programmable interfaces.	✓	✓	Perpetual
Zero-touch provisioning Automated provisioning of a new Cisco switch using the zero-touch provisioning functionality built into the switch.	✓	✓	Perpetual
128-bit MACsec encryption Configure 128-bit MACsec for authenticating and encrypting packets between MACsec-capable devices.	✓	✓	Perpetual
Advanced telemetry SPAN, RSPAN, ERSPAN Manual/CLI or WebUI configuration of SPAN, RSPAN for providing near-real-time access to operational statistics. No automation through Cisco Catalyst Center.	✓	✓	Perpetual
Streaming telemetry and visibility Model-driven telemetry lets you monitor your network by streaming data from network devices, continuously providing near-real-time access to operational statistics.	✓	✓	Perpetual
Cisco trustworthy solutions Help ensure hardware and software authenticity for supply chain trust and strong mitigation against man-in-the-middle attacks that compromise software and firmware.	✓	✓	Perpetual
High availability – Basic Support operational continuity and maintain availability during routine maintenance, and perform disaster recovery. StackWise Virtual, HSRP.	✓	✓	Perpetual
Cisco IOS Embedded Event Manager (EEM) EEM is a powerful and flexible subsystem that provides real-time network event detection and onboard automation. It gives you the ability to adapt the behavior of your network devices to align with your business needs.	✓	✓	Perpetual
Third-party API integration A flexible framework is provided to integrate third-party application software.	✓	✓	Perpetual
Sampled NetFlow Packets are sampled periodically.	✓	✓	Perpetual
Flexible network segmentation VRF,* VXLAN, LISP,* SGT, MPLS,* BGP-EVPN with VXLAN.*		✓	Perpetual
High availability – Advanced Support operational continuity and maintain availability during routine maintenance, and perform disaster recovery. IPFRR, NSF,* GIR,* ISSU*/eFSU.*		✓	Perpetual
Optimize bandwidth utilization (Advanced Multicast) Multicast is used between routers so they can track which multicast packets to forward to each other and to their directly connected LANs. RP Discovery,* PIM Bi-Dir.*		✓	Perpetual
256-bit MACsec encryption Configure 256-bit MACsec* for authenticating and encrypting packets between MACsec-capable devices.		✓	Perpetual
Precision Time Protocol Timing and synchronization for time-sensitive applications with PTPv2 as default profile (IEEE 1588v2/PTPv2), gPTP (IEEE 802.1AS), AES67, and G8275.1 profiles.		✓	Perpetual
Audio Video Bridging (AVB) Cisco AVB simplifies digitization of audio and video and offers superior quality of experience with standards like IEEE1588v2 PTPv2, AES67 timing profile.		✓	Perpetual
IPsec Supports 100G+ hardware encryption for high-bandwidth, secure Layer 3 transport between sites or from cloud to site.		✓	Perpetual
Application hosting Allows third-party applications to be hosted in a secure container environment on the switch.		✓	Perpetual
Application Visibility and Control (NBAR2)* Provides application visibility and control through Next-Generation Network-Based Application Recognition for manual/CLI configuration.		✓	Perpetual
WAN MacSec		✓	Perpetual
FQDN ACL (Layer 7 blocking)		✓	Perpetual
Customized SDM template		✓	Perpetual
Full Flexible NetFlow All packets.		✓	Perpetual
Fabric, segmentation, and eWC Enables policy-based automation with secure segmentation, complete visibility, and delivery of new services quickly on SD-Access devices via manual/CLI/third party.		✓	Perpetual

* Not supported on all platforms.