



# Novinky z Cisco Live US 2025

Jiří Rott  
Milos Pavlík  
Stanislav Kraus

24.6.2025





Proliferation of agents

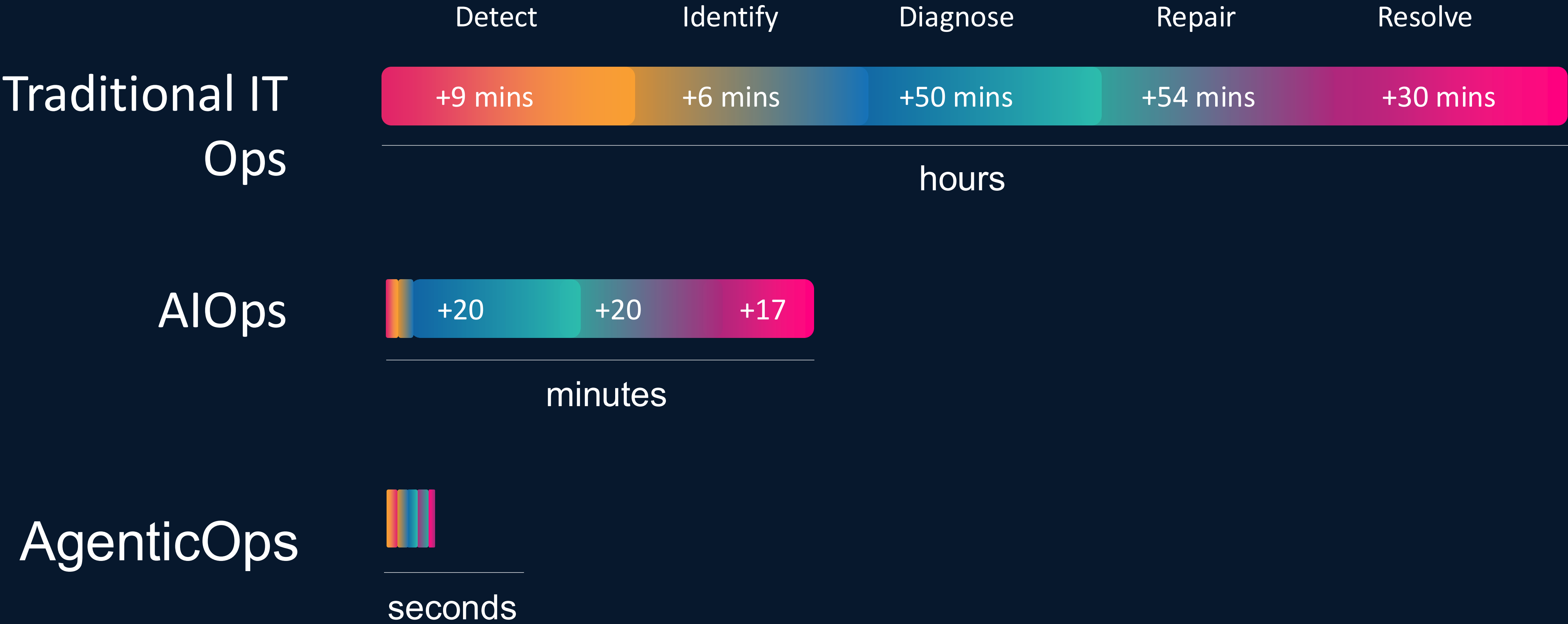
More security risks than ever

Profound skill shortage

This requires a network purpose built for AI



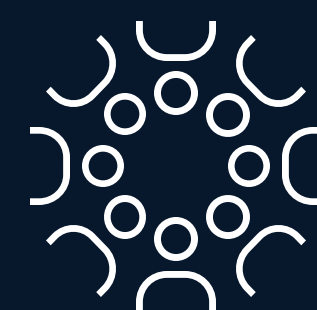
# Evolution of IT operations



Source: Cisco IT



AI-ready data centers



Future-proofed workplaces

Secure global connectivity



Digital resilience

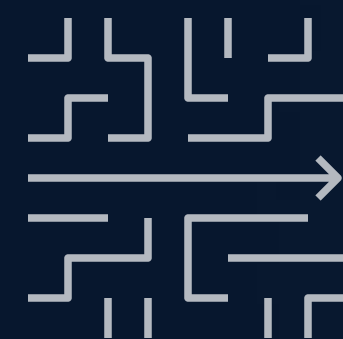


Accelerated by Cisco AI

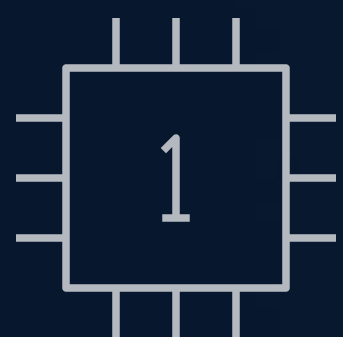




# Architecture for the AI-Ready Secure Network



**Operational simplicity**  
powered by AI

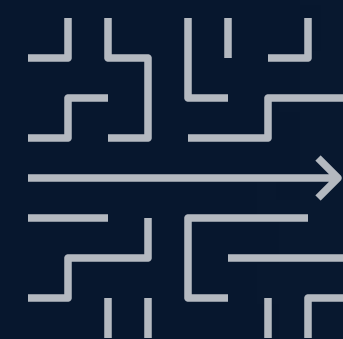


**Scalable devices**  
ready for AI

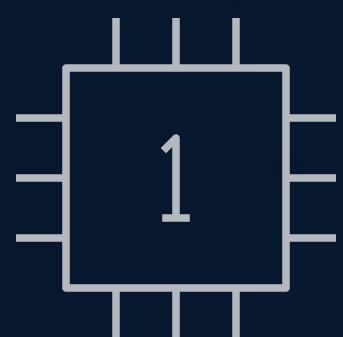


**Security**  
fused into the network

# Architecture for the AI-Ready Secure Network



**Operational simplicity**  
powered by AI



**Scalable devices**  
ready for AI



**Security**  
fused into the network



# Unifying our platforms

Catalyst

Meraki

Catalyst Center

MANAGEMENT

Meraki Dashboard

Catalyst License

LICENSE

Meraki License

Catalyst Hardware

CISCO HARDWARE

Meraki Hardware

# Announcing a new lineup for AgenticOps

PUBLIC BETA  
NEW CAPABILITIES

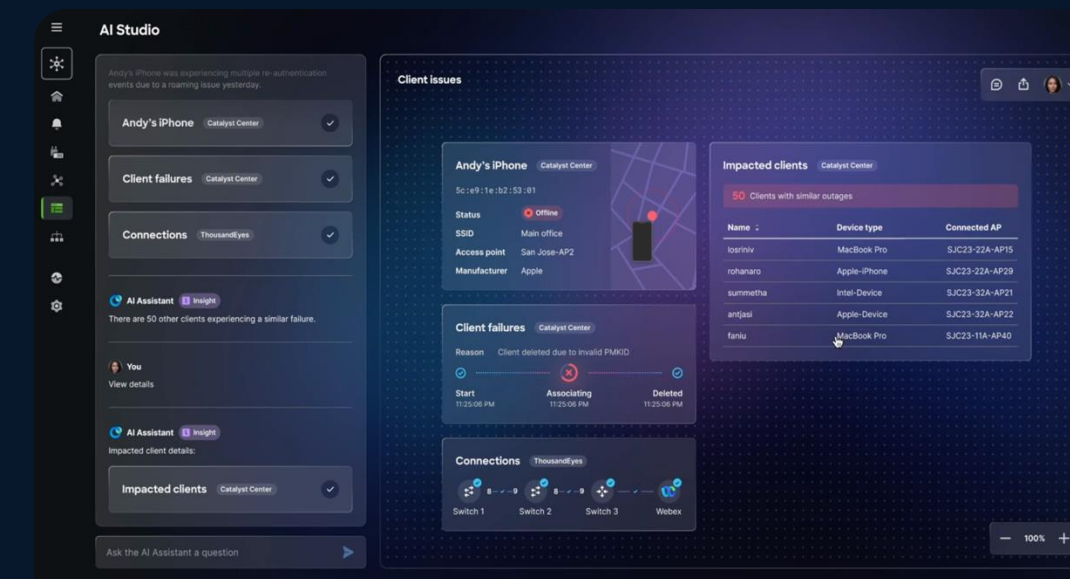


**cisco**  
**AI Assistant**

**AI Assistant**

Accelerate network  
operations

NEW



**AI Canvas**

Cross-domain collaborative  
troubleshooting

POWERED BY EXPERT AI MODEL\*

\*TBD



# AI Assistant

## Accelerate network operations with conversational AI

- Understand network health instantly
- Streamline Detect->Diagnose-> Act IT operations lifecycle
- Automated workflows (new)
- Integrated assurance (new)

### AI Assistant

2:06 pm

Certainly, I can assist with the root cause analysis of the **degraded Webex performance** for the client **John-MacBook**, with the MAC address **26:20:3b:92:09:2c**, according to the Analysis Plan.

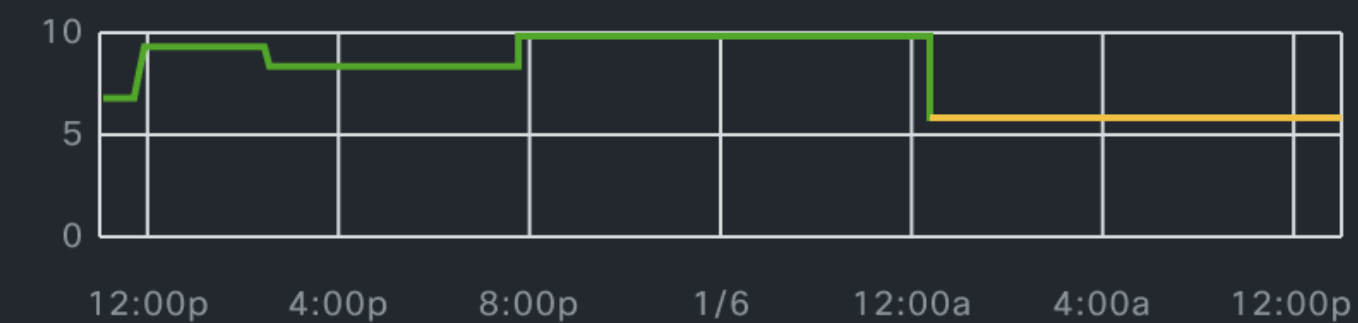
### AI Assistant

Here is what I found.

#### Client status

⚠ Fair ^

#### John-MacBook 6/10



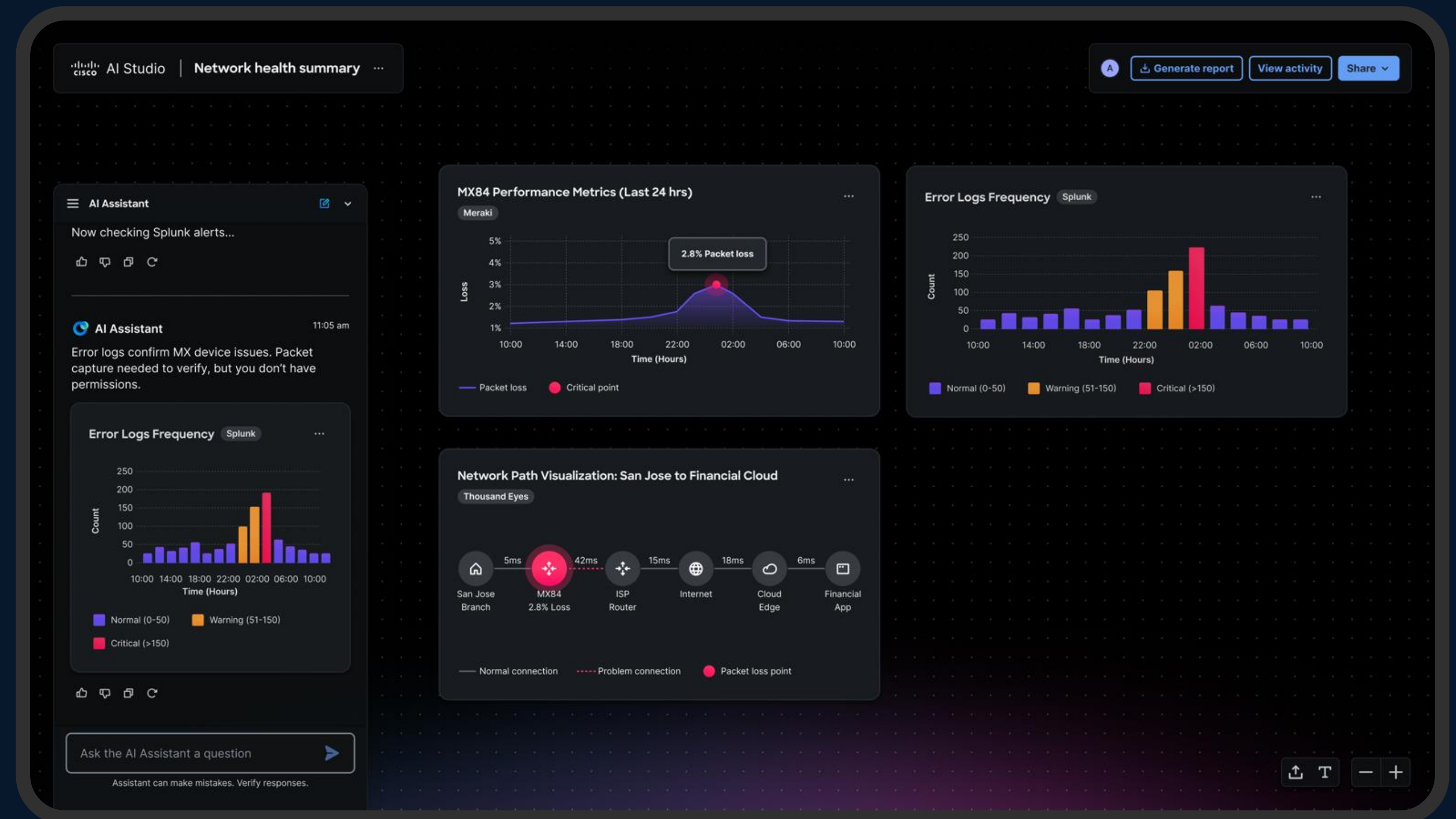
|           |           |    |          |             |    |
|-----------|-----------|----|----------|-------------|----|
| RSSI      | ● -90 dBm | Tx | 201.46kB | Retries     | 3% |
| SNR       | ● 48 dB   | Rx | 327.75kB | Packet loss | 5% |
| Data rate | 102 Mbps  |    |          |             |    |



# AI Canvas

One dashboard to see and solve it together

- Dynamic and contextual generative UI
- Shared workspace for NetOps, SecOps and execs
- Enhances AI Assistant capabilities





Powered by

# Expert AI Model\*

The most advanced  
networking LLM

## Purpose-Built for Networking

Expert reasoning across troubleshooting, configuration, and automation.

## Trusted Training

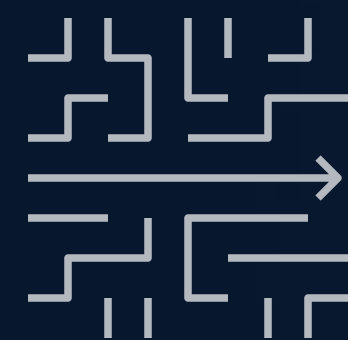
Built on exclusive Cisco U, CCIE content, and expert knowledge with continuous feedback loop.

## Expert Accuracy

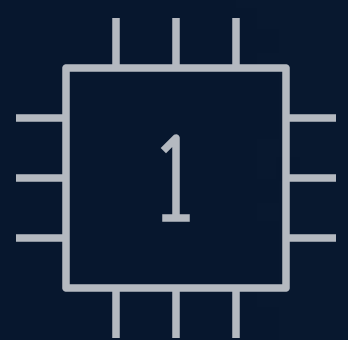
Out delivers general models with precise, network-specific, responses.

\*TBD

# Architecture for the AI-Ready Secure Network



Operational simplicity  
powered by AI



Scalable devices  
ready for AI



Security  
fused into the network



# Introducing A new lineup for the new network

Smart Switches



NEW

Secure Routers



NEW

Large Venue Wi-Fi 7



NEW

Campus Gateway



NEW

Industrial IoT



NEW



Custom Cisco ASICs enables *full stack control, rapid innovation*, and helps Cisco stay ahead of the market compared to *merchant silicon*

16 nm  
Technology

256K Routes  
(16X UADP)

1.3 Tbps, 1.5 Bpps  
ASIC Performance

A100

7 nm  
Technology

2M+ Routes  
(8X UADP)

6.4 Tbps, 3.9 Bpps  
ASIC Performance

K100

Built-in Security – MACSEC and IPSec and authenticity of silicon

Flexible Tables – adaptable tables for varying deployments

Smart & Sustainable – High efficiency with low power (Gigs per Watt)

# Enterprise Grade Silicon One



AVAILABLE JULY 2025

# Introducing Smart Switches for the AI-powered campus

Cisco C9350 Smart Switches

High-performance (up to 26 Tbps )  
Low latency

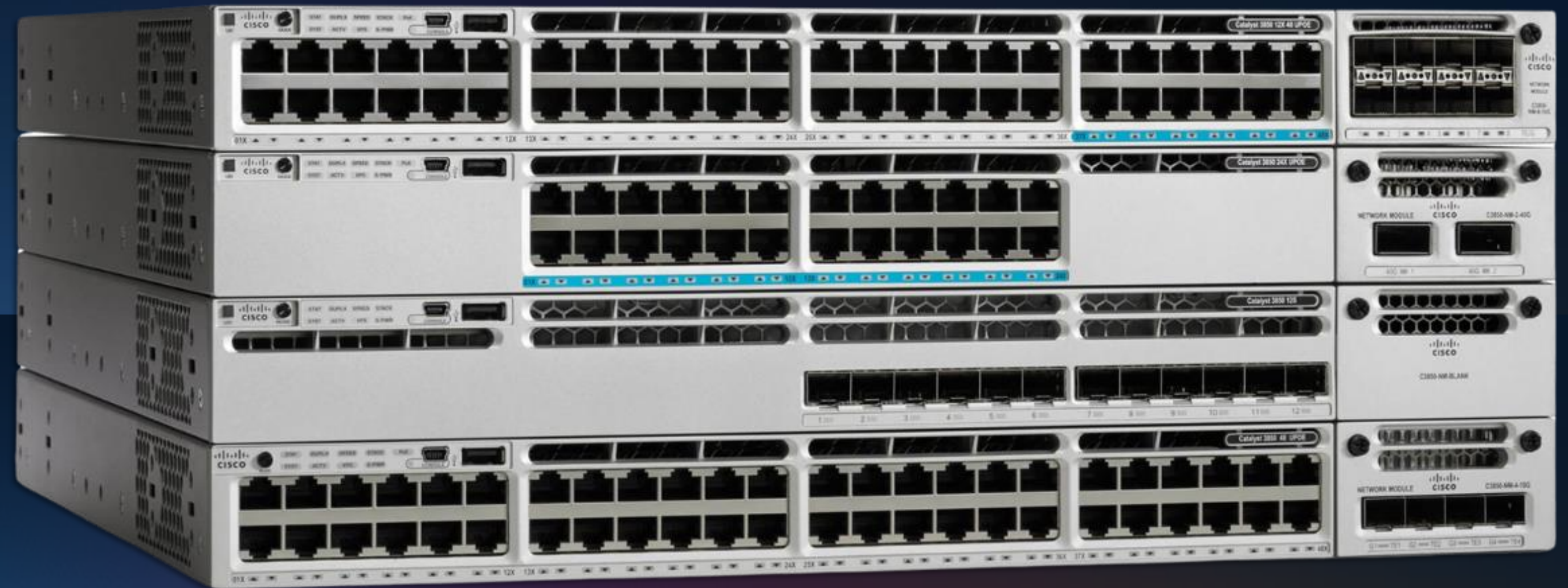
Cisco Silicon One +  
co-processor for security and AI

New stacking architecture  
(Up to 12 members)

Post-quantum secure

Flexible Speeds (10M/100M/1/2.5/5/10/25/50/100G)

Intelligent energy efficiency





AVAILABLE JULY 2025

# Introducing Smart Switches for the AI-powered campus

Cisco C9610 Smart Switch

High-Density Modular Core (51.2 Tbps System Bandwidth)

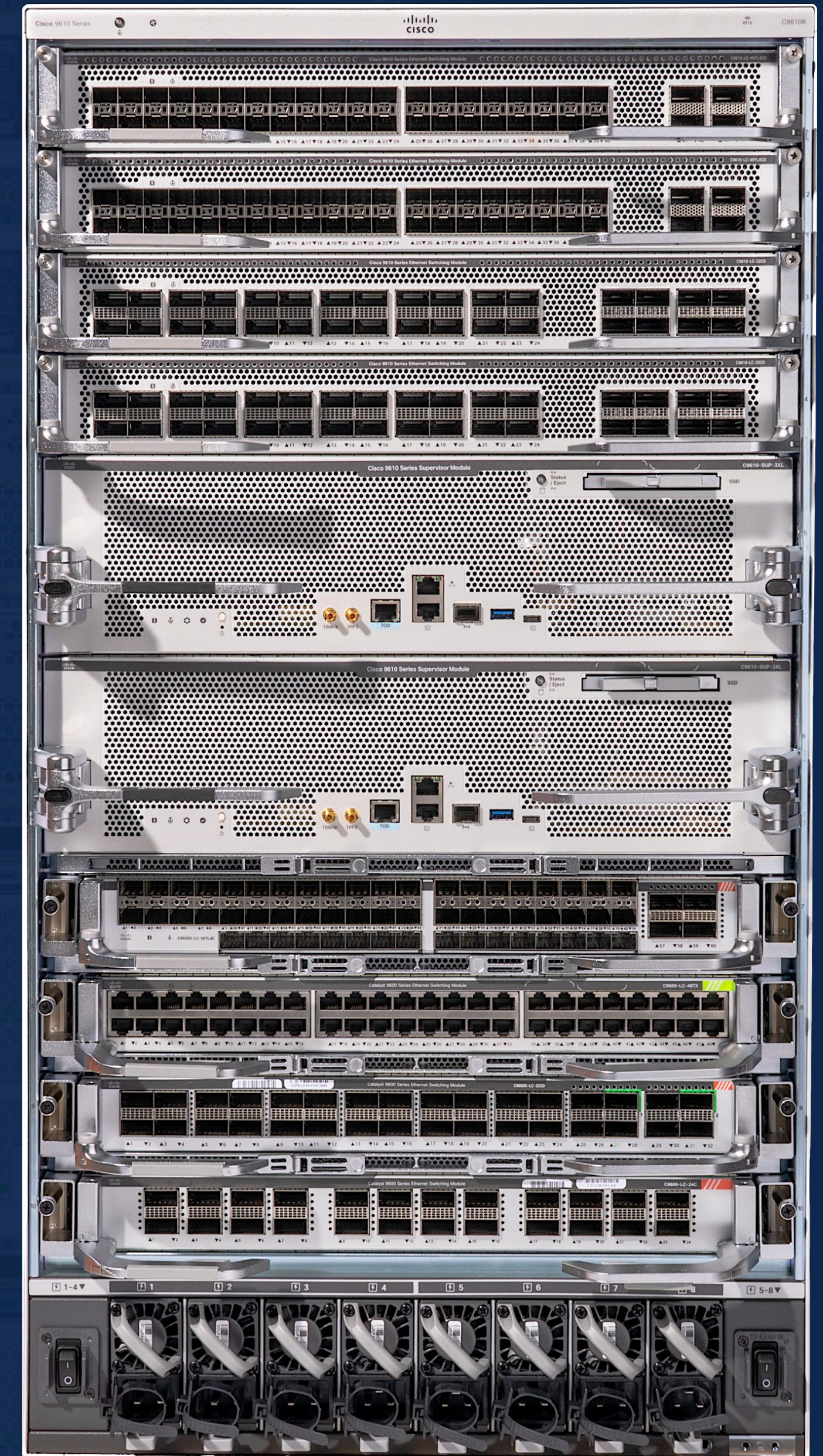
8x Line Card slots+ 2x Supervisor slots  
( 384 x 1G až 16 x 400G )

C9610-SUP3 (E100), C9610-SUP3XL (K100)

Enhanced app-hosting infrastructure

Post-quantum secure

Intelligent energy efficiency (8 PSUs)





# Wi-Fi 7 for every operational scale

NEW



CW9172

6 Spatial Streams

Omnidirectional

Ceiling mount and  
Wall Plate form factor



CW9176I

12 Spatial Streams

Omnidirectional

10Gbps, GPS, UWB



CW9176D1

12 Spatial Streams

Integrated Directional

10Gbps, GPS, UWB



CW9178

16 Spatial Streams

Omnidirectional

2x 10Gbps, GPS, UWB



CW9179

16 Spatial Streams

Software-defined Radios

2x 10Gbps, GPS, UWB

Wi-Fi 7 | Global Use AP | Unified License | AI Optimized

AVAILABLE AUGUST 2025

# Introducing Industry first Large Venue Wi-Fi 7 Access Points

Cisco CW9179

Industry first enterprise-grade  
large venue Wi-Fi 7 AP

Fast deployment for auditoriums,  
stadiums, and arenas

Highly configurable radios to  
optimize coverage patterns





AVAILABLE JULY 2025

# Introducing Wi-Fi + Ultra-Reliable Wireless Backhaul

Cisco IW9165

Cisco IW9167

Single access point to connect  
end users and industrial AI

Highly resilient,  
always-on connectivity

Ultra-low latency  
and high reliability



AVAILABLE MAY 2025

# Introducing The New Campus Gateway

Cisco Campus Gateway

Cloud-managed wireless LAN controller for up to 5,000 APs and 50,000 clients

Enable seamless roaming across large campus environments

Go cloud without re-cabling, changing VLANs, or disrupting ops





AVAILABLE JUNE 2025

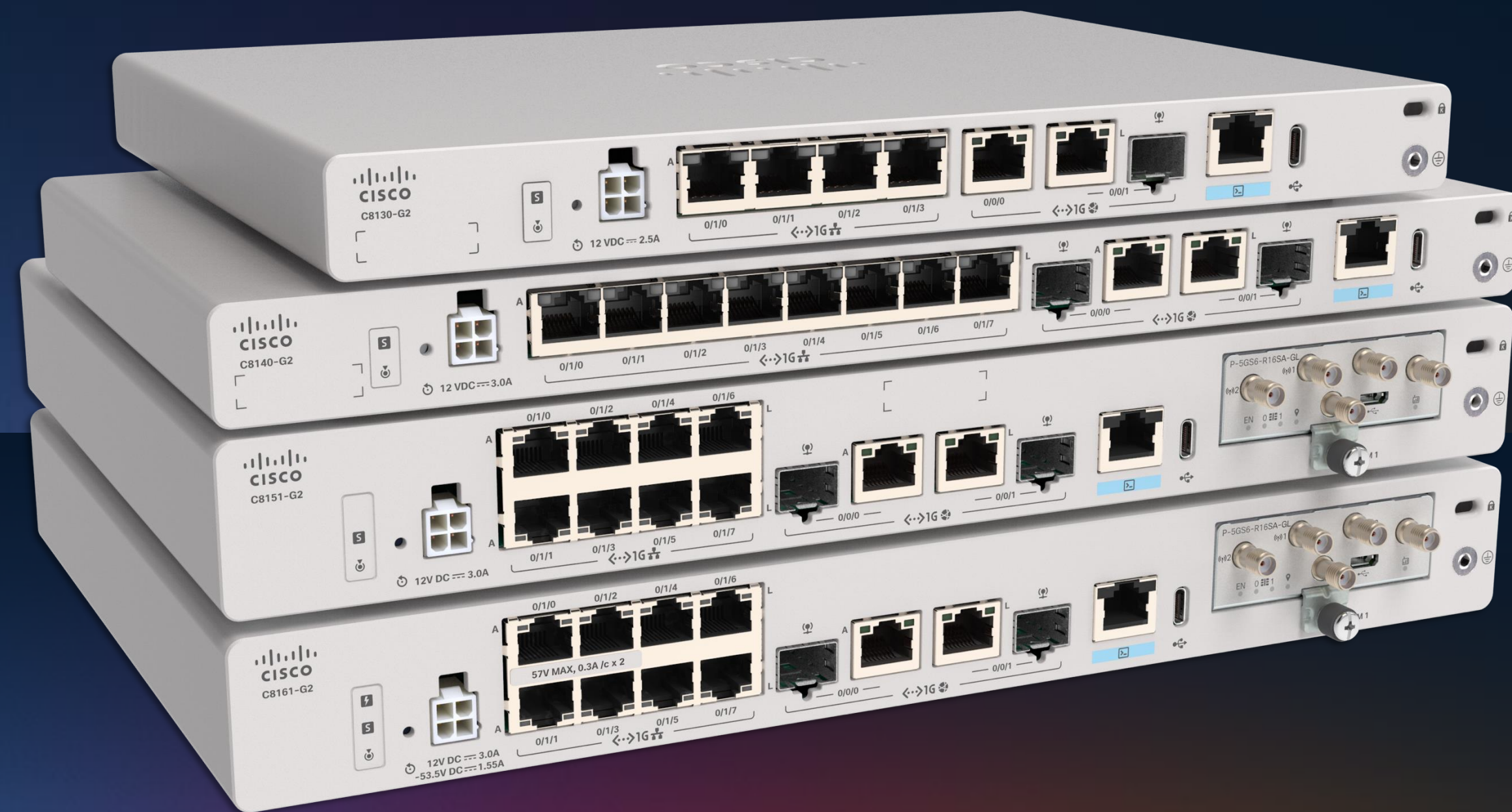
# Introducing Secure Routers for the AI-powered unified branch

Cisco 8000 Secure Routers

More throughput to support  
increased traffic to data center

Advanced routing and firewall  
for secure SD-WAN and SASE

Post-quantum secure





AVAILABLE JULY 2025

# Introducing All New Industrial Ethernet Portfolio

Cisco IE3100/H

Cisco IE3500/H

Cisco IE9300

19 versatile form factors

54 Gbps throughput

720W per switch

Cyber Vision embedded security



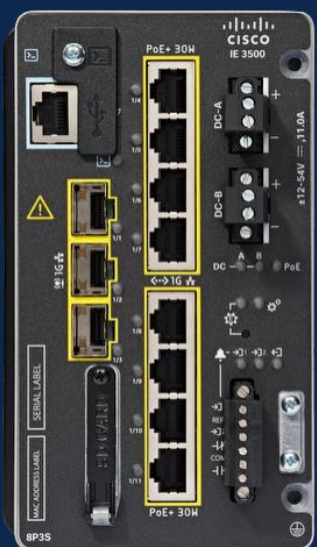


# IE3500 Rugged Series Switches

## Base



**IE-3500-8T3S**  
8x 1GE ports  
3x 1GE SFP ports

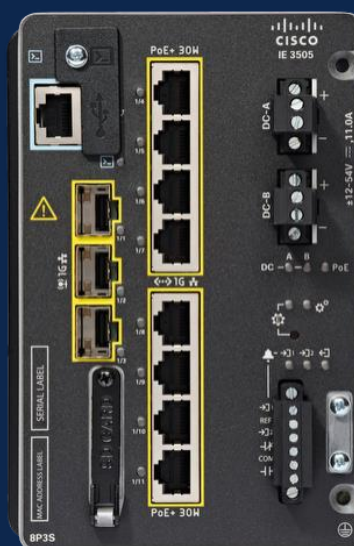


**IE-3500-8P3S**  
8x PoE/PoE+  
3x 1GE SFP ports  
360W PoE Budget

## Advance



**IE-3505-8T3S**  
8x 1GE ports & 3x 1GE SFP ports  
HSR/PRP/DLR

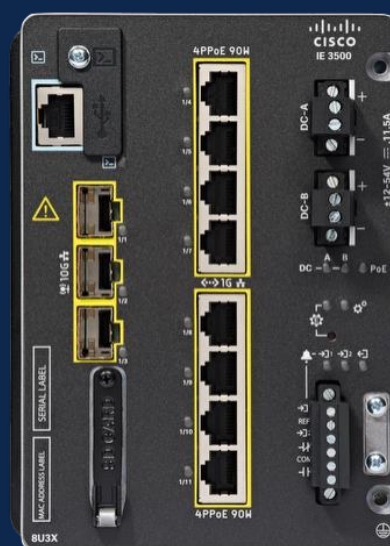


**IE-3505-8P3S**  
8x PoE/PoE+ 3x 1GE SFP ports  
HSR/PRP/DLR  
480W PoE budget

## 10G/4PPoE



**IE-3500-8T3X**  
8x 1GE ports  
3x 10G SFP ports



**IE-3500-8U3X**  
8x PoE/PoE+/4PPoE (90W)  
3x 10G SFP ports  
480W PoE budget

## Common Expansion Modules



**IEM-3500-6T2S**  
6x 1GE ports  
2x 1GE SFP ports



**IEM-3500-8T**  
8x 1GE ports



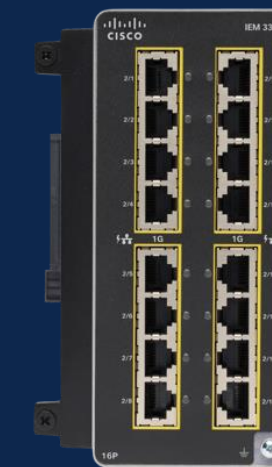
**IEM-3500-8P**  
8x PoE/PoE+



**IEM-3500-8S**  
8x 1GE SFP



**IEM-3500-14T2S**  
14x 1GE ports  
2x 1GE SFP ports



**IEM-3500-16T**  
16x 1GE ports



**IEM-3500-16P**  
16x PoE/PoE+



**IEM-3500-4MU**  
4x 2.5G  
PoE/PoE+/  
4PPoE (90W)



# IE3500H Heavy Duty Series Switches

NEW!

## PoE



### IE-3500H-14P2T

2x 1GE ports  
14x 1GE PoE ports  
240W PoE Budget



### IE-3500H-12P2MU2X

2x 10G SFP  
2x 2.5G PoE/PoE+/4PPoE (60W)  
12x GE PoE/PoE+  
240W PoE Budget

## FE w/ GE Uplinks



### IE-3500H-12FT4T

12x FE D Code ports  
4x 1GE X Code ports



### IE-3500H-20FT4T

20x FE D Code ports  
4x 1GE X Code ports

## Full GE



### IE-3500H-8T

8x 1GE port  
M12 X-Code



### IE-3500H-16T

16x 1GE ports  
M12 X-Code



### IE-3500H-24T

24x 1GE ports  
M12 X-Code

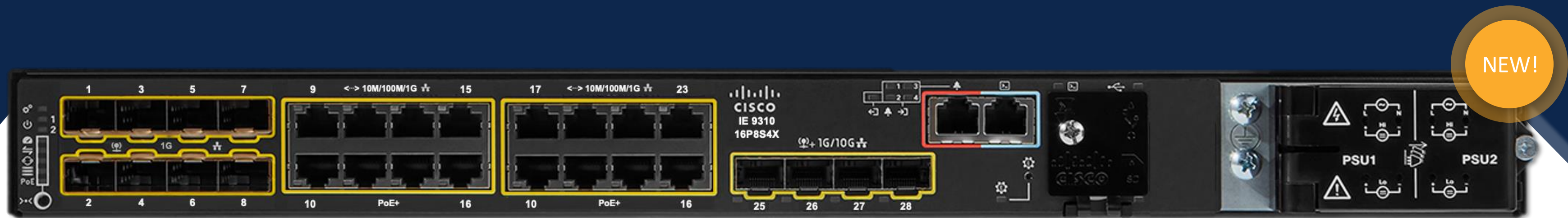


### IE-3505H-16T

16x 1GE X-Code ports  
HSR/PRP/DLR



# Introducing IE9300 Rugged Series with Mixed Ports



## Comprehensive connectivity

8x 1GE SFP plus 4x 10G SFP uplinks  
16x 1GE with PoE/PoE+



## High performance networking

Enterprise-grade Cisco silicon for fiber ring  
aggregation and high throughput



## Cyber resilient

Cyber visibility, zero-trust enforcement, and  
observability built-in

**The most versatile rugged rackmount switch for industrial settings where copper and fiber are needed**

# IE9300 Rugged Series Switches



IE-9310-26S2C  
26x 1GE SFP ports  
2x 1GE combo ports



IE-9320-24T4X  
24x 1GE ports  
4x 10G SFP ports  
Stackable



IE-9320-24P4S  
24x 1GE with PoE/PoE+  
Up to 480W PoE budget  
4x 1GE SFP ports  
Stackable



IE-9320-24P4X  
24x 1GE with PoE/PoE+  
4x 10G SFP ports  
Up to 720W PoE budget  
Stackable



IE-9320-26S2C  
26x 1GE SFP ports  
2x 1GE combo ports  
Stackable



IE-9320-22S2C4X  
22x 1GE SFP, 4x 10G SFP  
2x 1GE combo ports  
Timing input  
Conformal coating  
Stackable



IE-9320-16P8U4X  
8x mGig with 90W 4-pair PoE  
16x 1GE with PoE/PoE+ ports  
Up to 720W PoE budget  
4x 10G SFP ports  
Stackable



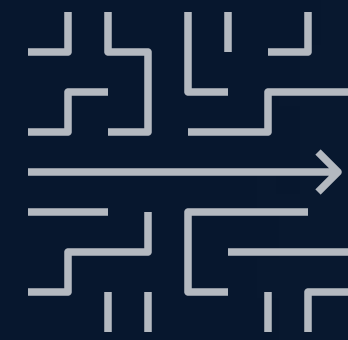
IE-9310-16P8S4X  
16x 1GE with PoE/PoE+ ports  
8x 1GE SFP ports  
Up to 480W PoE budget  
4x 10G SFP ports

NEW!

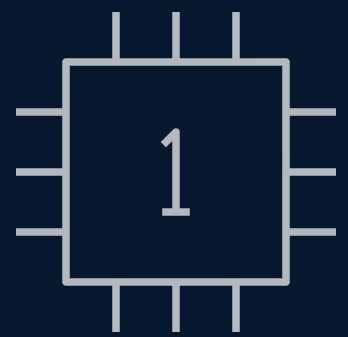
## The fastest growing rackmount series in IE history



# Architecture for the AI-Ready Secure Network



Operational simplicity  
powered by AI



Scalable devices  
ready for AI



Security  
fused into the network

# Security fused into the network



## Securing users, clients & apps

Protecting user access and application interactions

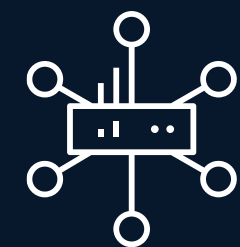
- Hypershield-ready
- Scalable segmentation
- Software-Defined Access
- Security Group Tags
- UZTNA
- AI device classification
- Common policy
- Next-gen firewall



## Securing network connectivity

Safeguarding and optimizing network connections

- Quantum-resistant:
- MACsec
- IPsec
- WAN MACsec



## Securing the device

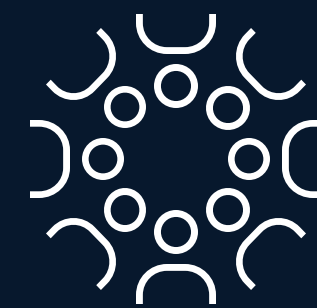
Protecting and ensuring compliance of devices

- Quantum-resistant secure boot
- Compensating controls



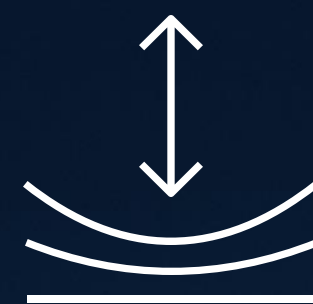


AI-ready data centers



Future-proofed workplaces

Secure global connectivity



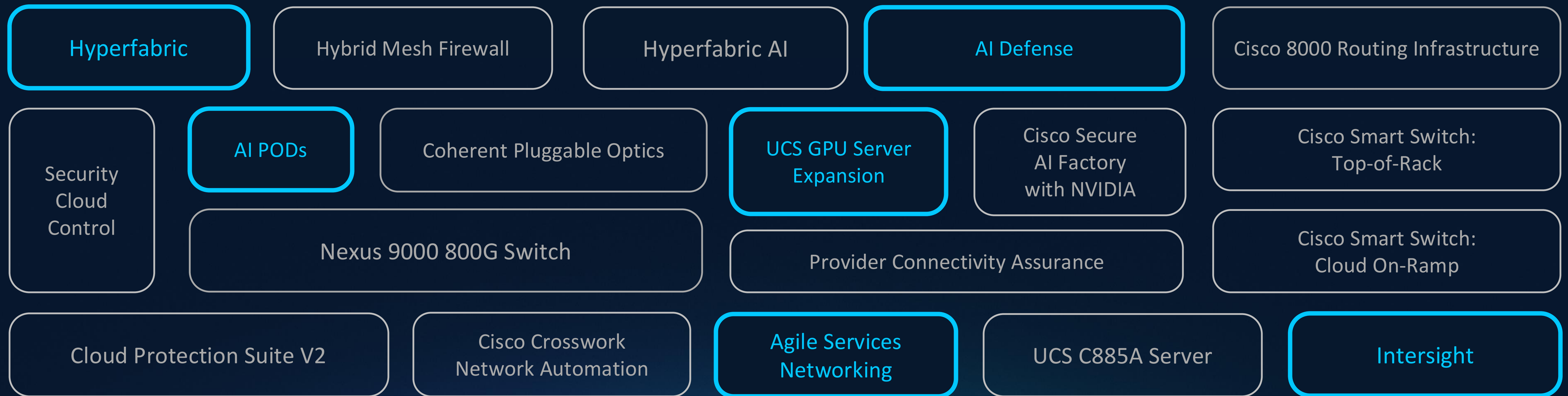
Digital resilience



Accelerated by Cisco AI



# Massive data center innovation



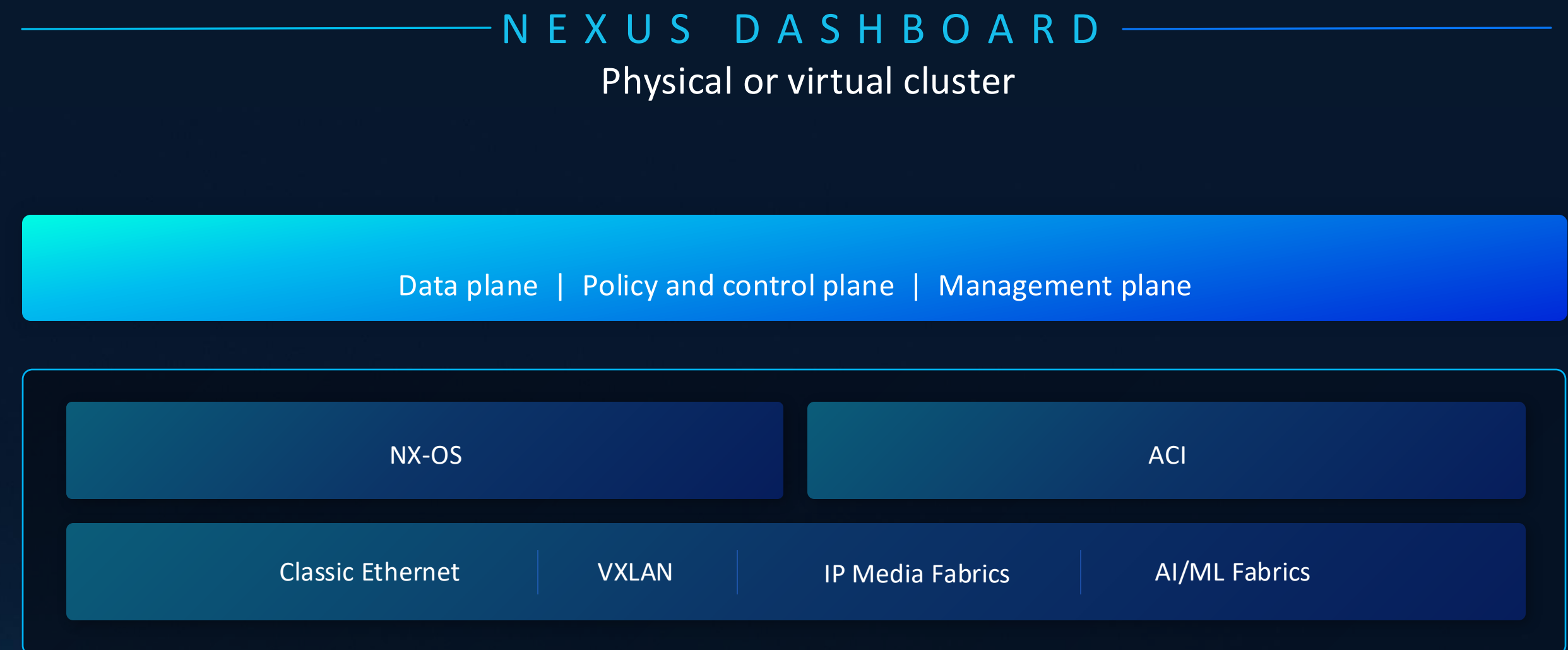


Announcing

# Unified Nexus Dashboard

One console and  
common policy across  
NX-OS and ACI fabrics

AVAILABLE JULY 2025

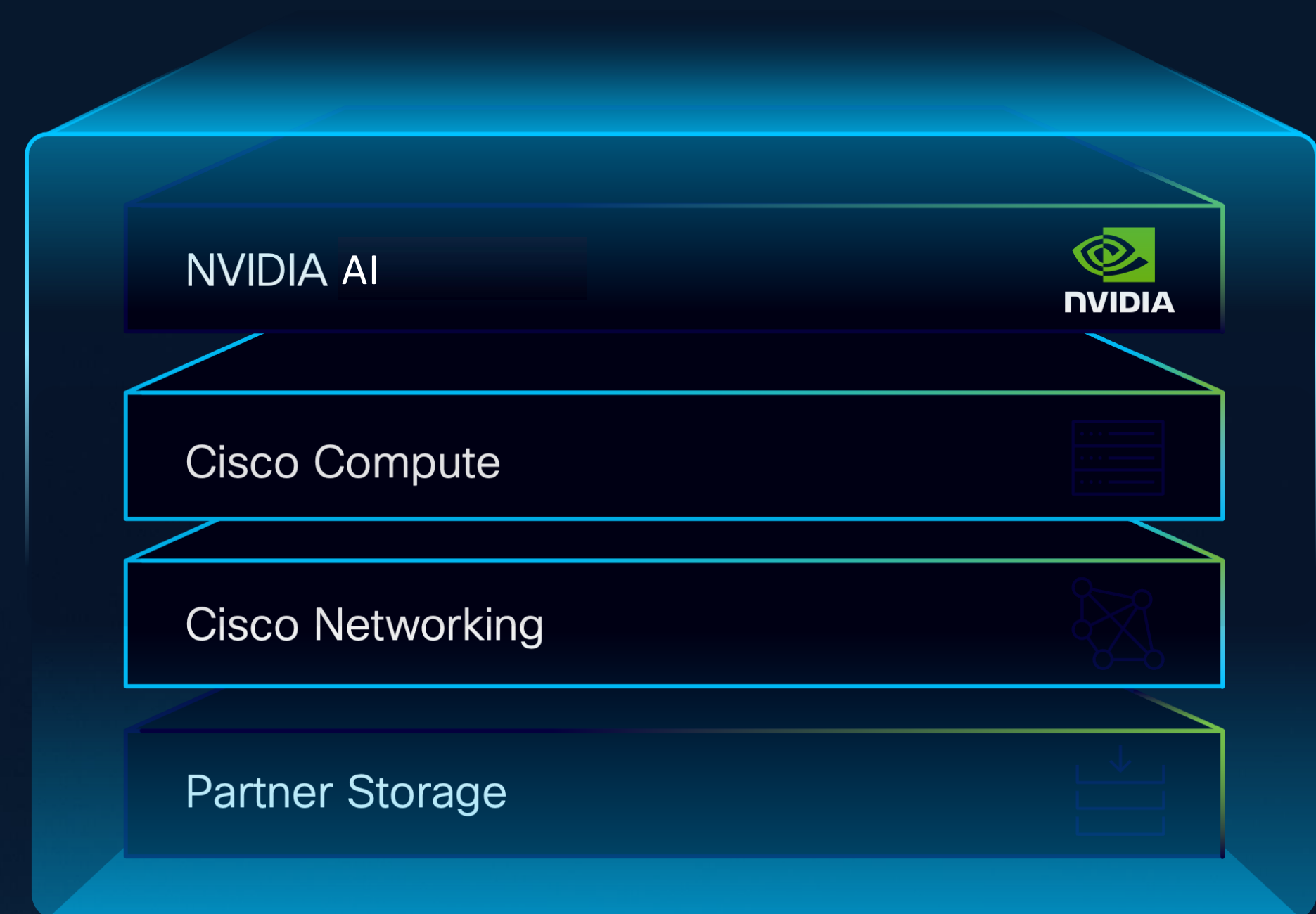


New

# Cisco Secure AI Factory with NVIDIA

Reference architecture for Cisco and NVIDIA infrastructure working together

AVAILABLE NOW



Cisco Security at every layer



Cisco Switches are fully integrated with NVIDIA Spectrum-X architecture to deliver low-latency intracluster communication



NVIDIA BlueField-3

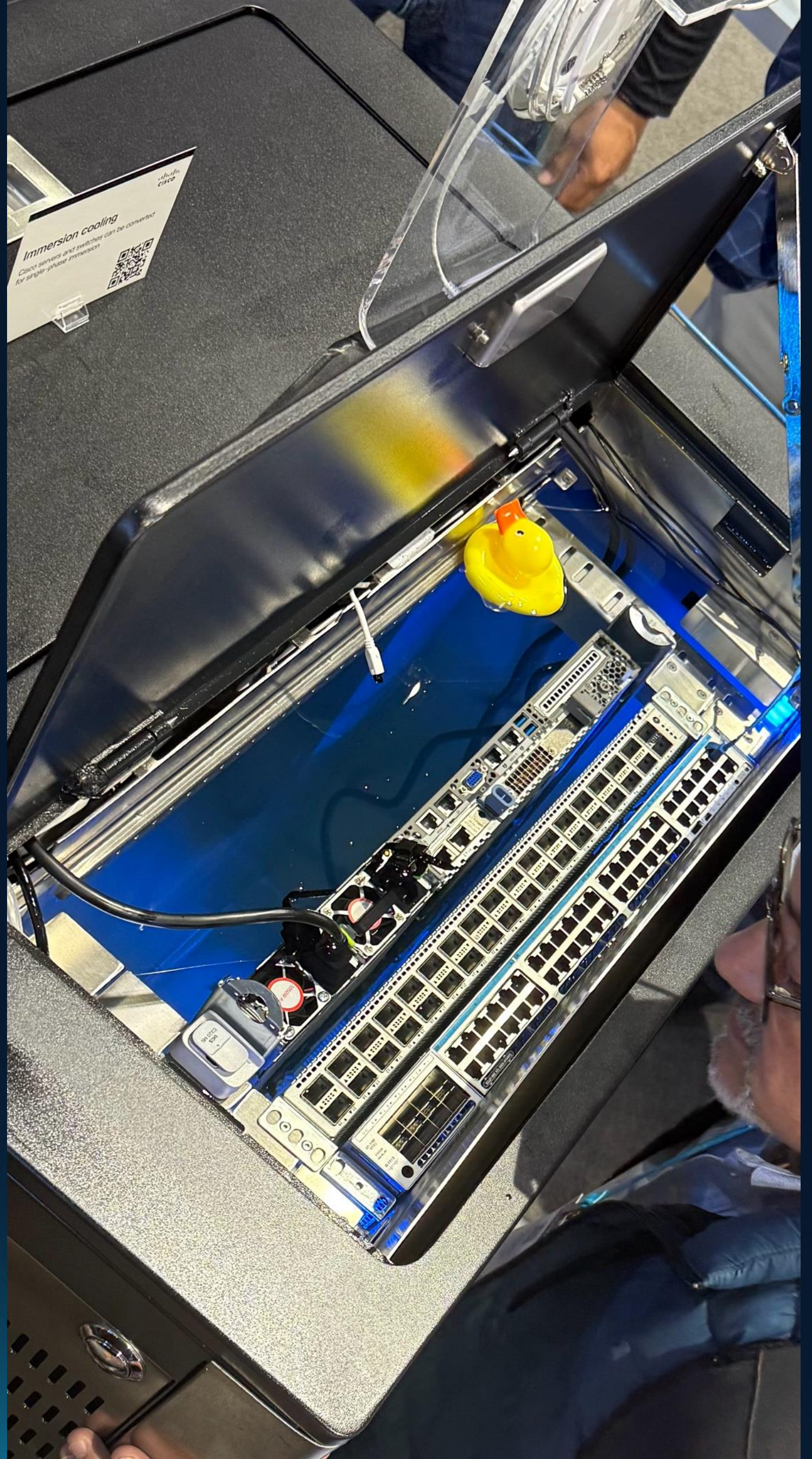
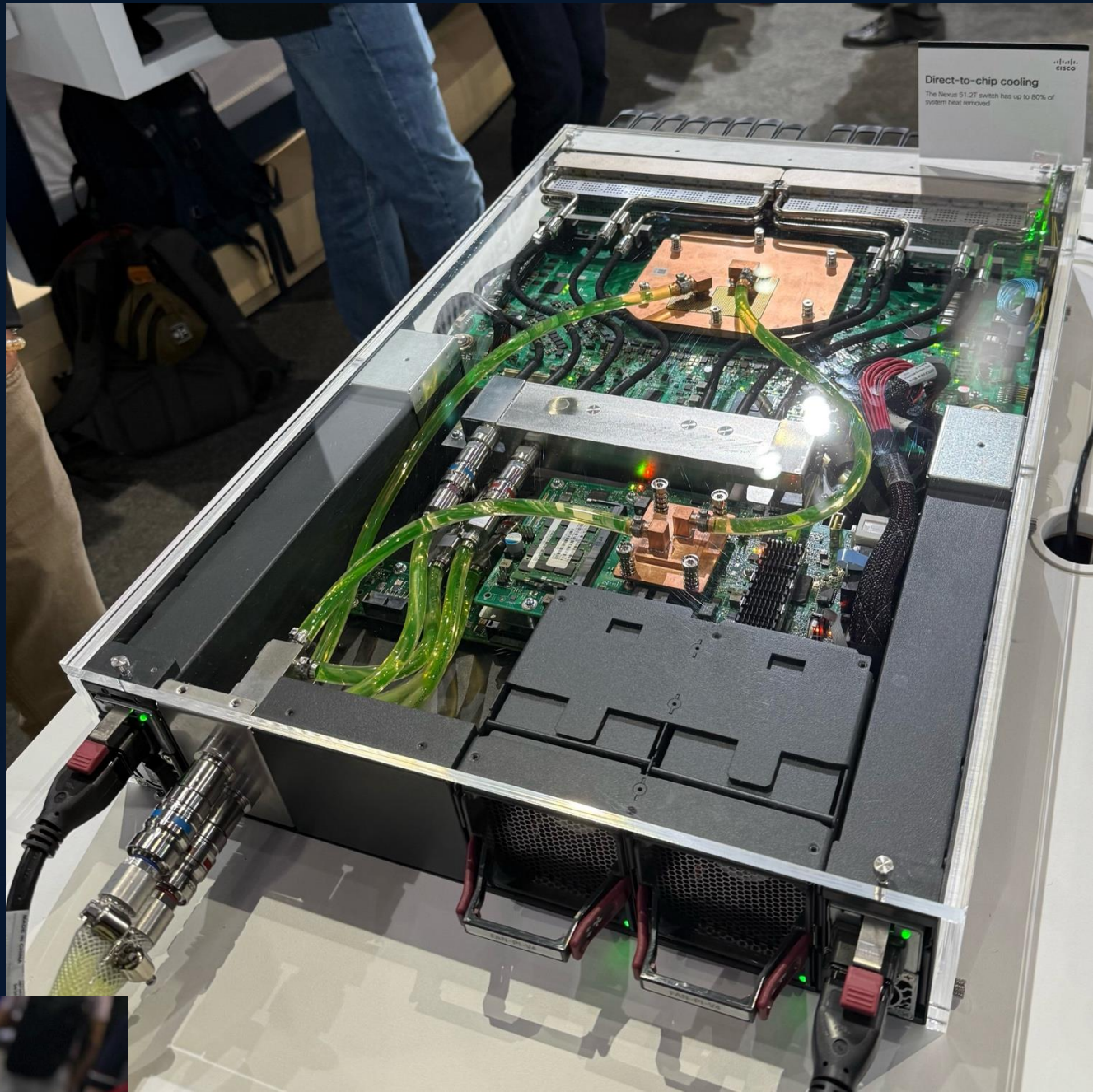
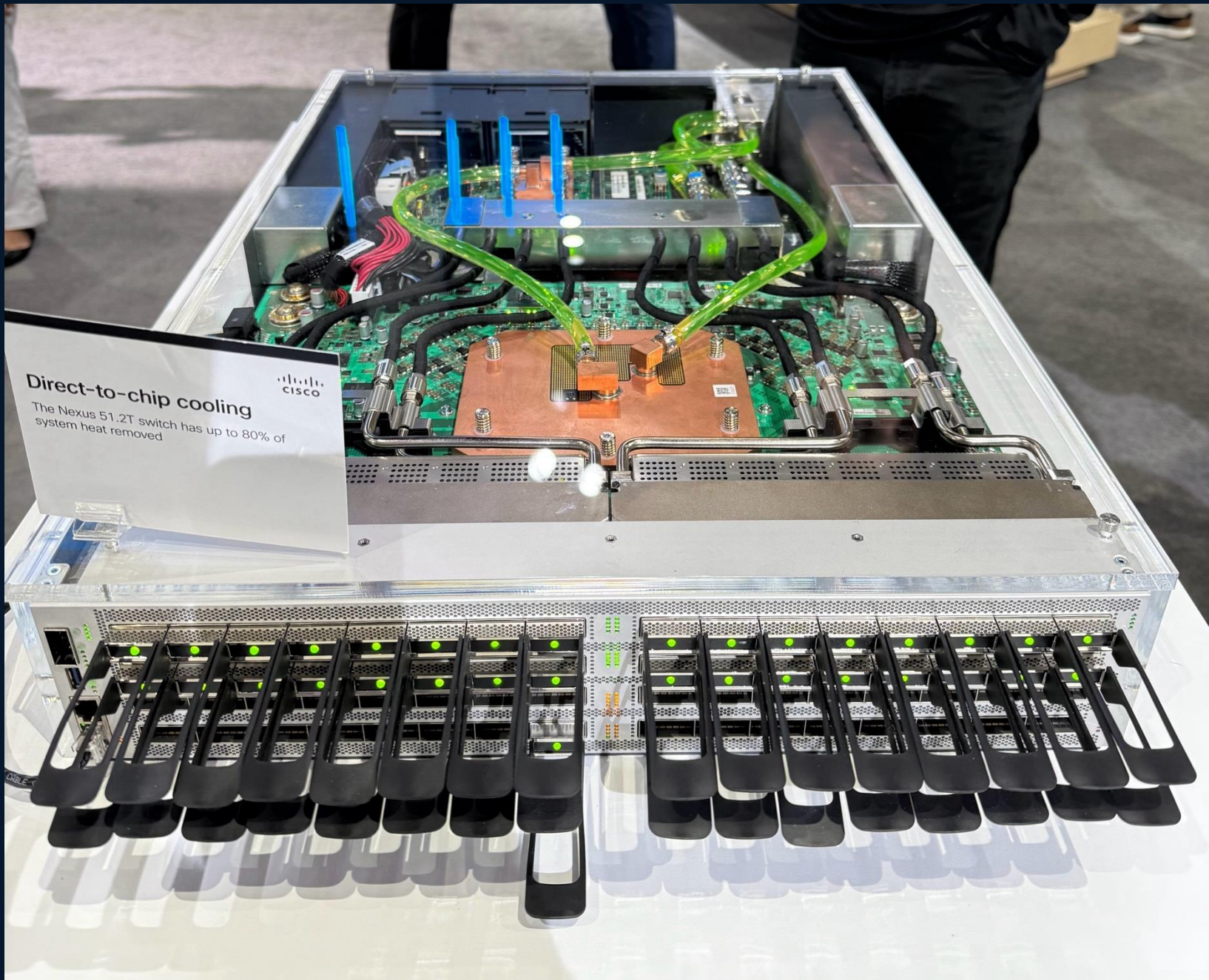


Cisco N9364E (G200 2U)



NVIDIA BlueField-3

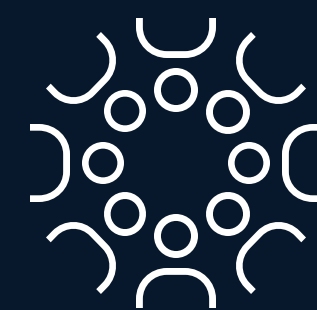








AI-ready data centers



Future-proofed workplaces



Secure global connectivity



Digital resilience



Accelerated by Cisco AI

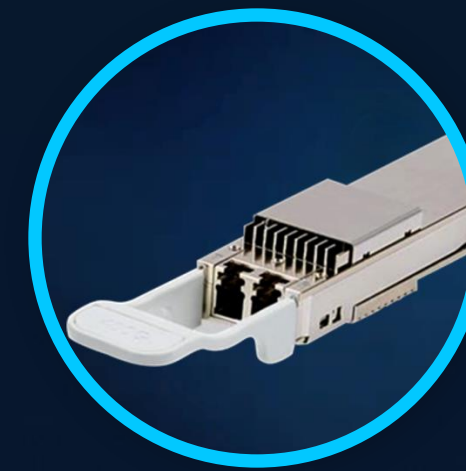


# Agile Services Networking

Infrastructure and  
validated designs for  
service provider success in  
the AI era



Refreshed routing



New long-haul  
optical



AI  
automation



Provider  
Connectivity  
Assurance



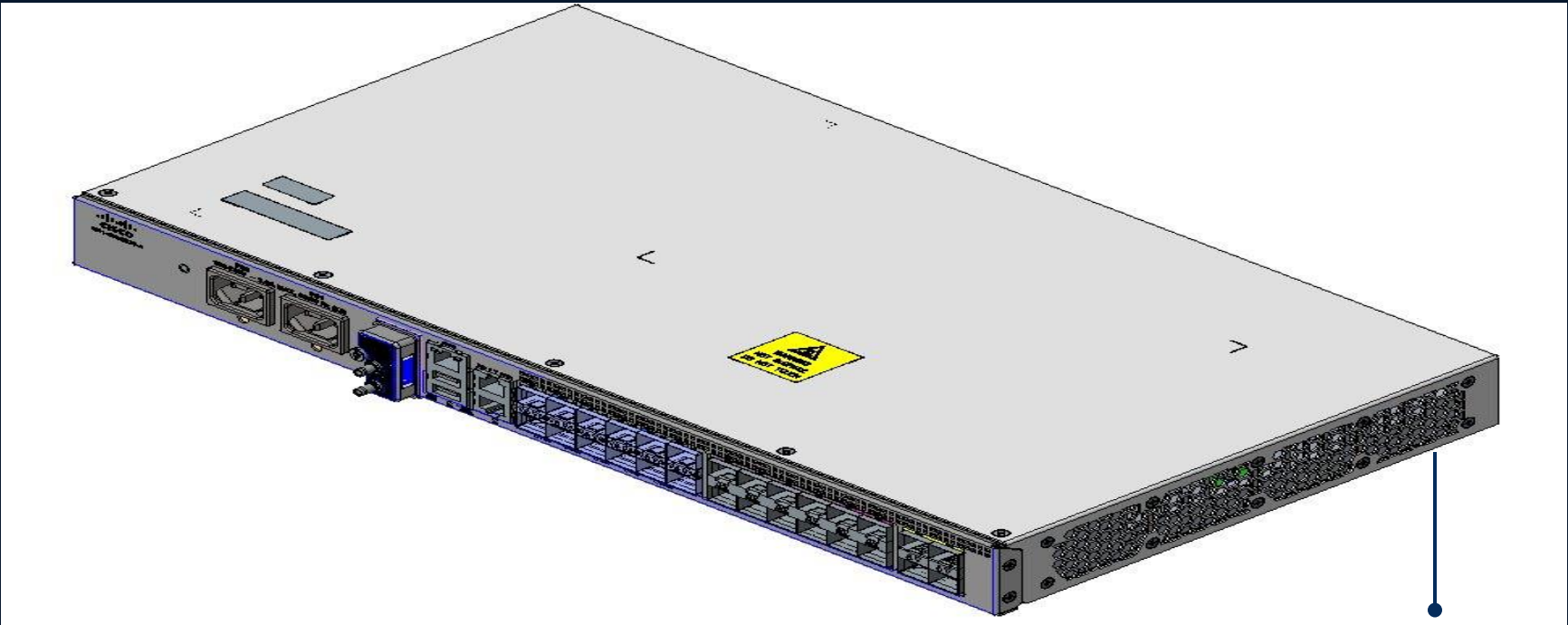
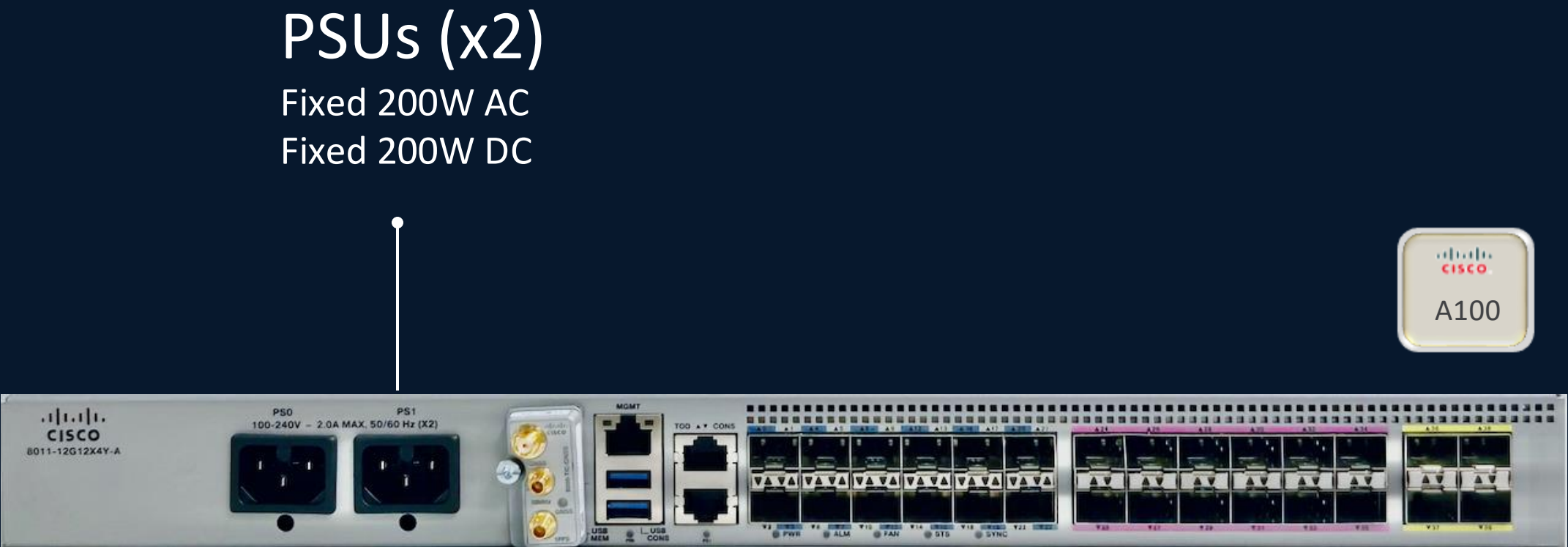
# Cisco 8011-12G12X4Y-A/D

1RU, 240G, Dense 1/10G & 4x25G Access system

| Hardware Overview    |  |
|----------------------|--|
| Data Plane           | 1x A100 ASIC   |
| Control Plane        | 4 Core ARM CPU<br>16GB DRAM, 32GB SSD                |
| Port Configuration   | 12x1G + 12x1/10G + 4x1/10/25G                        |
| Product Capabilities | i-temp, Class C timing, MACsec all ports*            |
| Fans and PSU         | 4x Fans N + 1 redundancy<br>2x PSUs 1 + 1 redundancy |
| Dimension            | 1RU, <250mm depth                                    |
| Use Case             | 10G NID, CSR, Access                                 |

| 1G | 10G | 25G | 40G | 100G | 400G |
|----|-----|-----|-----|------|------|
| 28 | 16  | 4   | NA  | NA   | NA   |

\*SW support FCS+1



FANs (x4)  
Side to side Airflow

Note: Program timelines are subject to change at CISCO’s discretion.

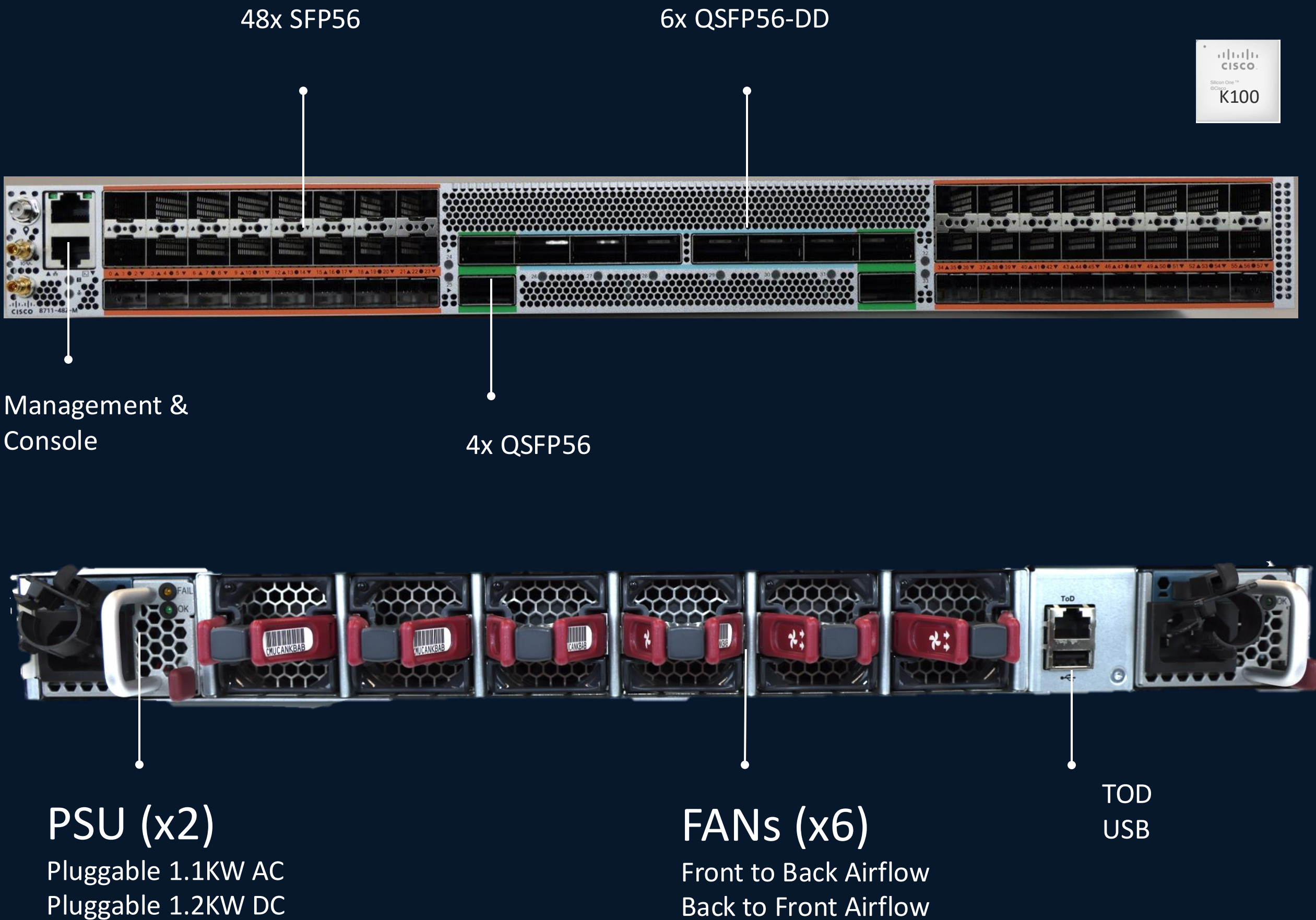
# Cisco 8711-48Z-M

1RU, 5.6T, 3<sup>rd</sup> Generation K100 based Dense low speed MACsec, IPsec Edge Router

| Hardware Overview    |   |
|----------------------|---|
| Data Plane           | 1x K100 NPU – 5.6T  |
| Control Plane        | 6 Core x86 CPU<br>64 GB DRAM / 256 GB SSD                           |
| Port Configuration   | 48x SFP56 + 4x QSFP56 + 6x QSFP56-DD                                |
| Product Capabilities | Class C timing, MACsec all ports<br>RON Architecture ready          |
| Management Ports     | RS-232 console, 1 GbE Management, 1x USB2.0, GBP (ToD, 10MHz, 1PPS) |
| Fans and PSU         | 6x Fans, N+1 Redundancy,<br>2x PSUs, 1+1 PSU Redundancy             |
| Typical Power        | <800 W w/o Optics (Estimated)                                       |
| Dimensions           | 1RU, 600 depth  |
| Use case             | Aggregation and Service Edge  |

| 1G | 10G | 25G | 50G | 40G | 100G* | 400G |
|----|-----|-----|-----|-----|-------|------|
| 48 | 88  | 88  | 48  | 8   | 28    | 6    |

\*4x QSFP56 ports do not support 2x100G Grey optics

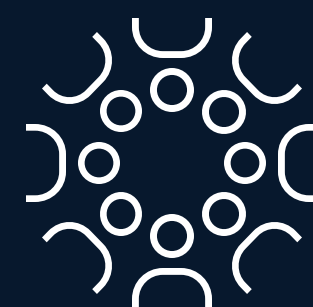


Note: Roadmap only. HW Design & program timelines are subject to change at CISCO’s discretion.





AI-ready data centers



Future-proofed workplaces



Secure global connectivity



Digital resilience



Accelerated by Cisco AI



# The AI Defense Solution





Cisco has the industry's most complete  
**Hybrid Mesh Firewall** solution

# Cisco Hybrid Mesh Firewall

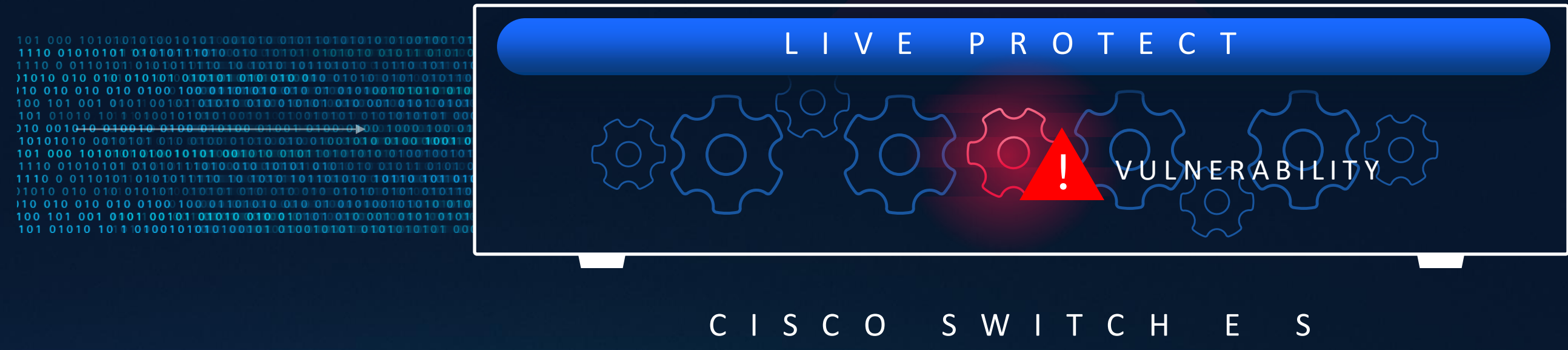
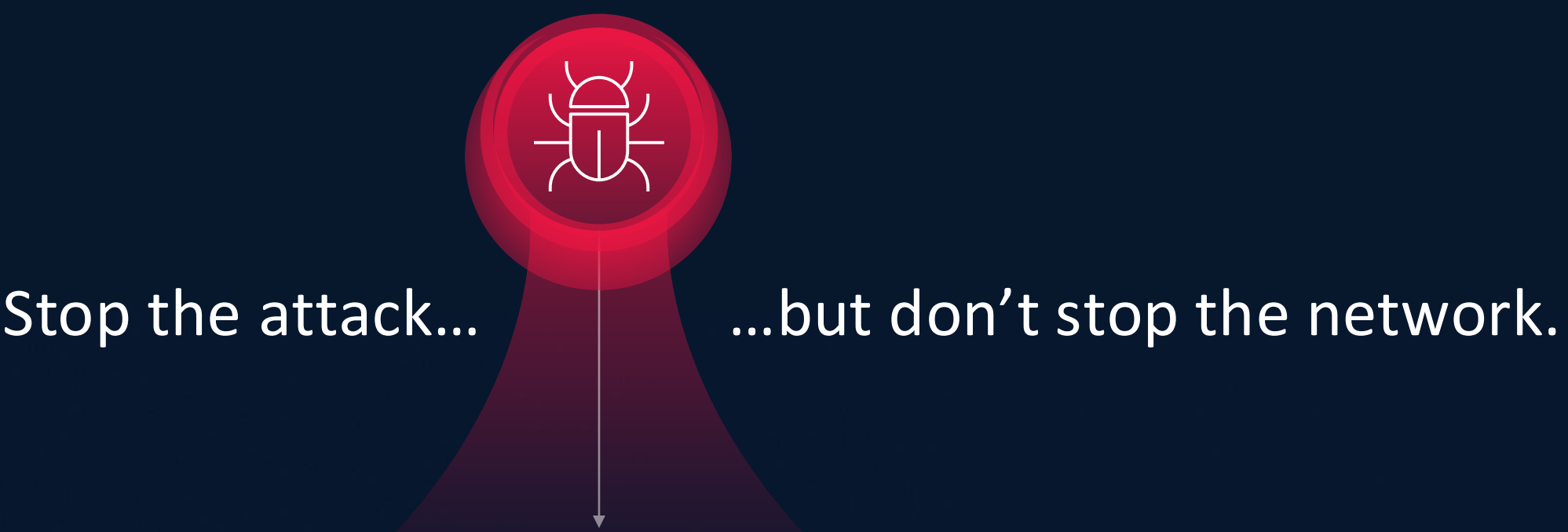
SECURITY CLOUD CONTROL



Write policy once, enforce across the mesh



Announcing  
Live Protect  
Vulnerability shielding for  
Cisco networking devices  
AVAILABLE FOR NX-OS SEPTEMBER 2025



Announcing

## Secure Firewall 6100 Series

Highest performance density for data centers

AVAILABLE OCTOBER 2025



200 Gbps  
per rack unit

Line rate advanced  
threat protection

Modular  
scalability



Announcing

## Secure Firewall 200 Series

Advanced on-box threat inspection for branch

AVAILABLE OCTOBER 2025



Up to 3x  
price-performance

Integrated  
SD-WAN

1.5 Gbps encrypted threat  
protection

# Firewall price-performance leader for every need





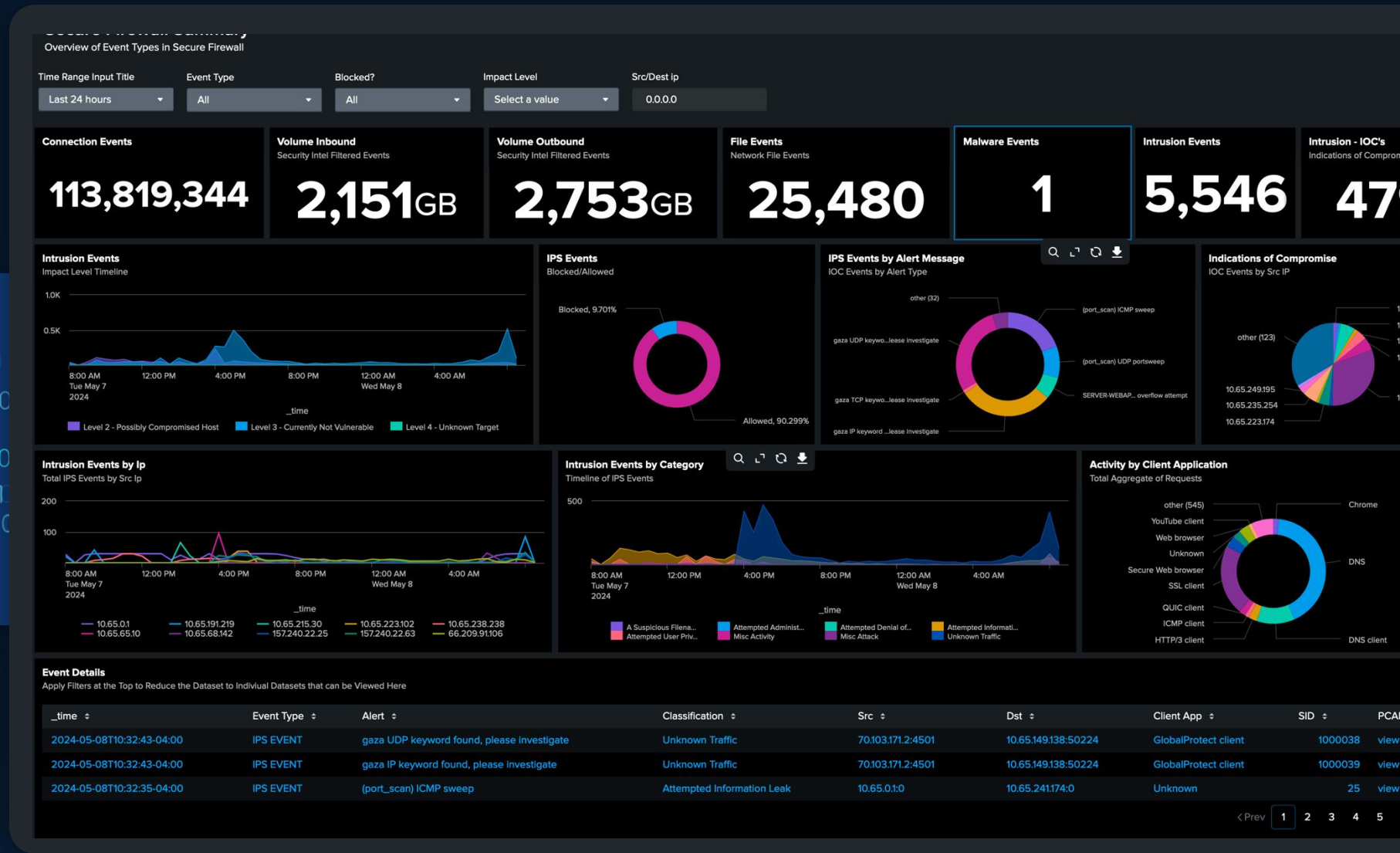
# Announcing

# Free Cisco Firewall logs to

# Splunk\*

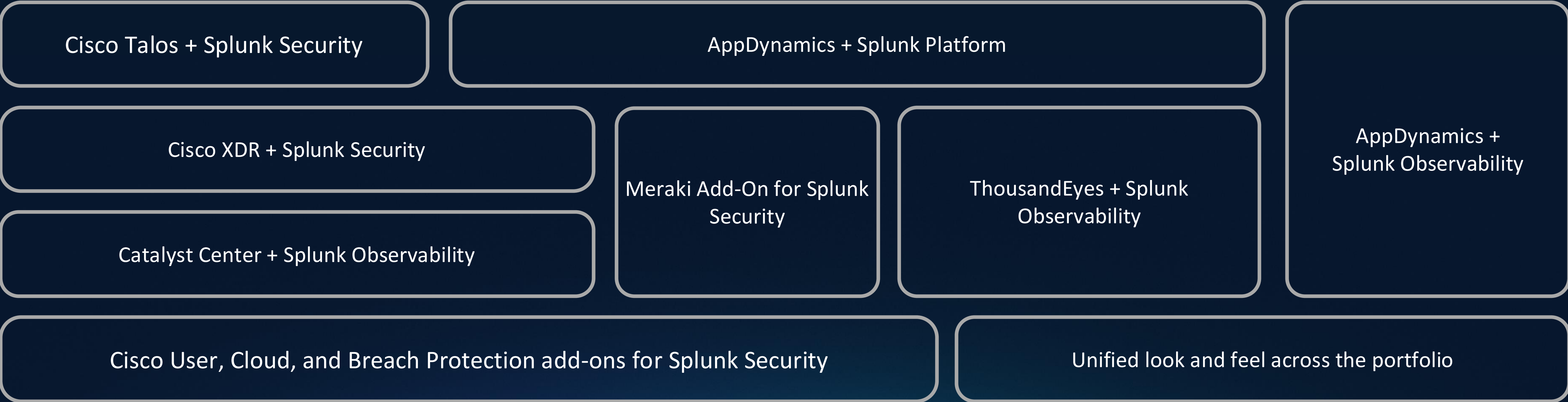
AVAILABLE AUGUST 2025

\*Ingest up to 5GB/day (requires Firewall Threat Defense subscription and Splunk license)



New detections | Automated response

# Cisco and Splunk innovation velocity

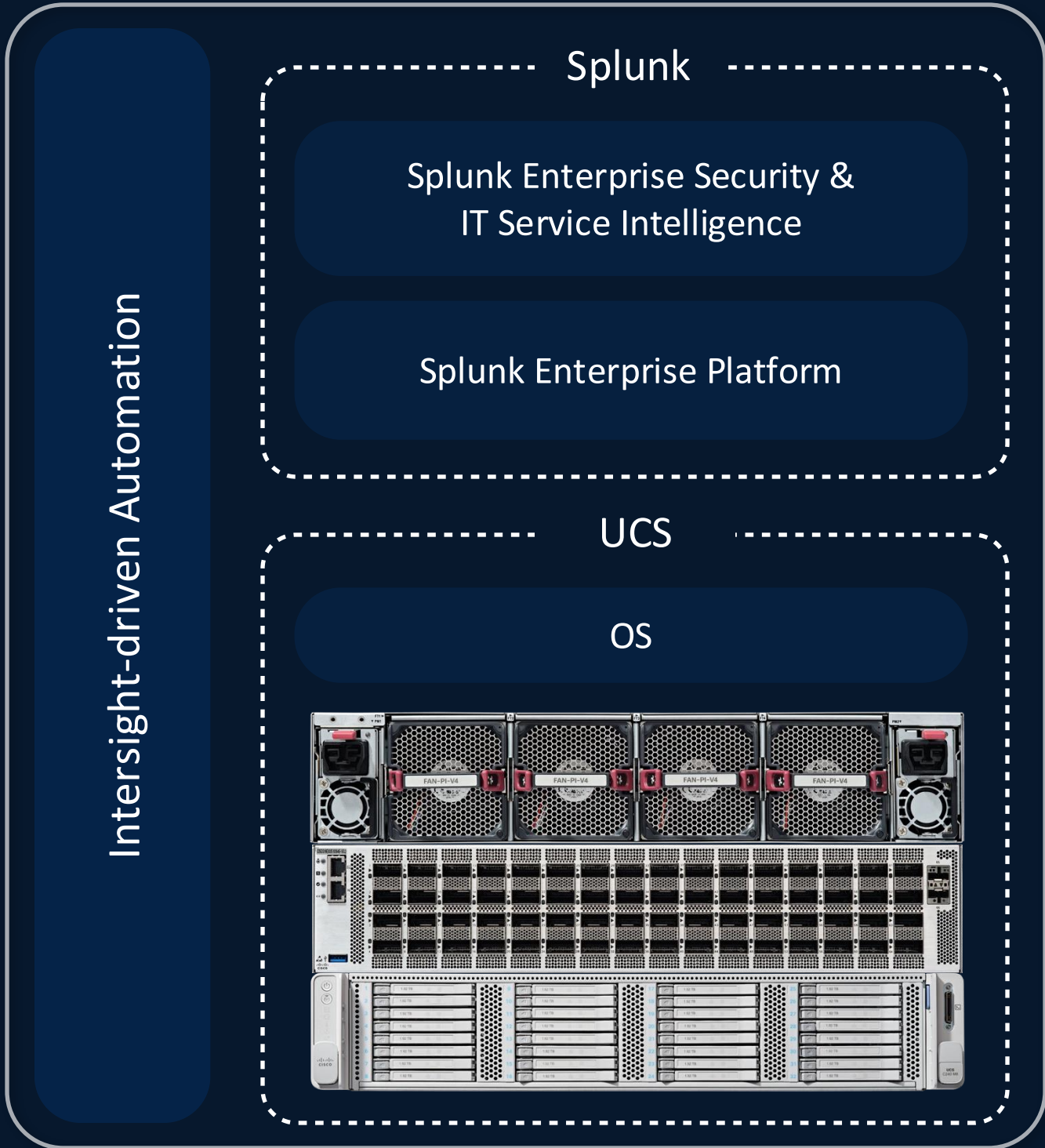




# Announcing Splunk PODs

Validated designs and simplified  
ordering for Splunk platform with  
Cisco compute

AVAILABLE JUNE 2025



# Powering the SOC of the Future

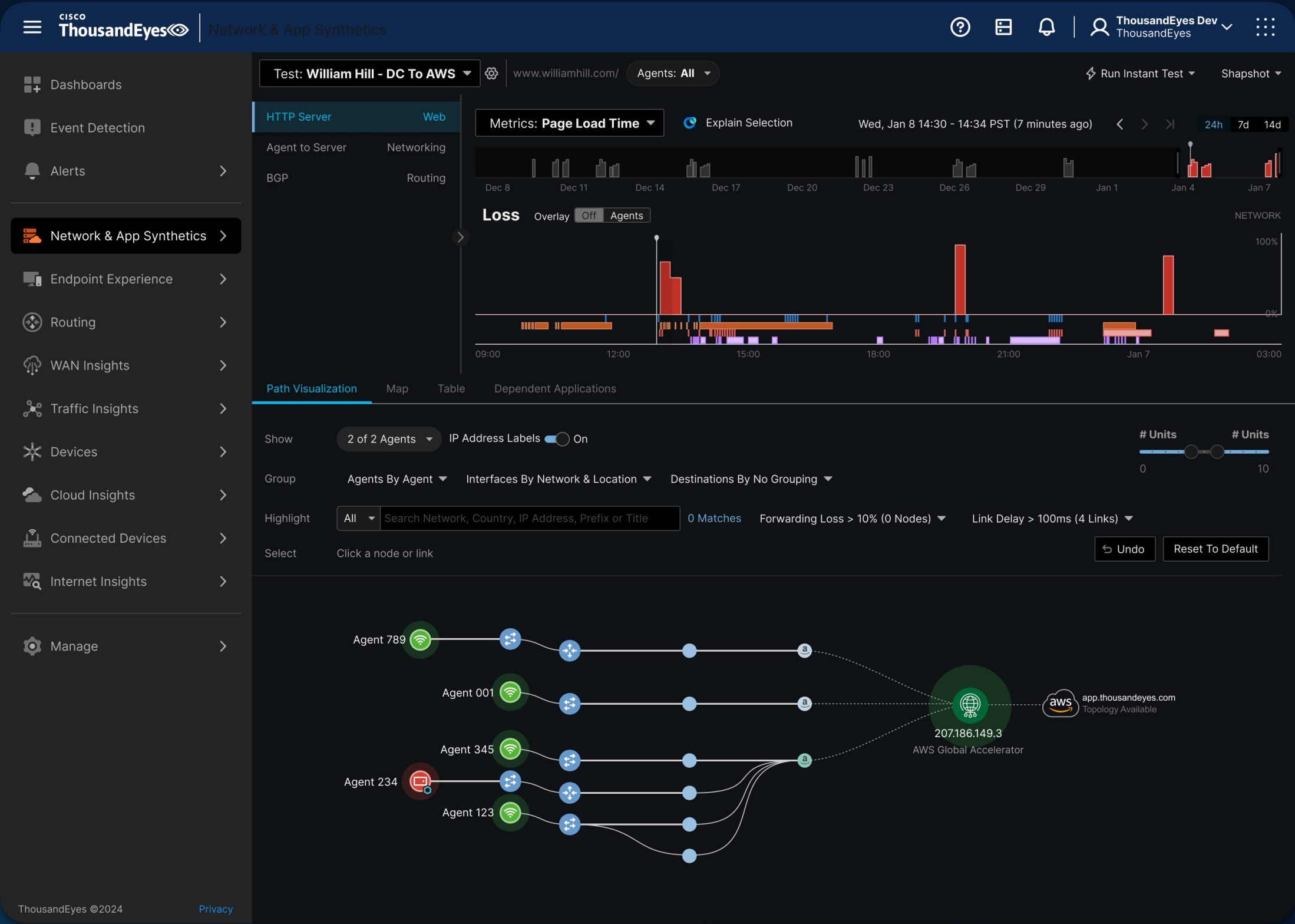




# Announcing Enhanced multi-layer assurance

Expanded visibility across owned and unowned networks, cloud, wired and wireless devices

AVAILABLE JUNE 2025



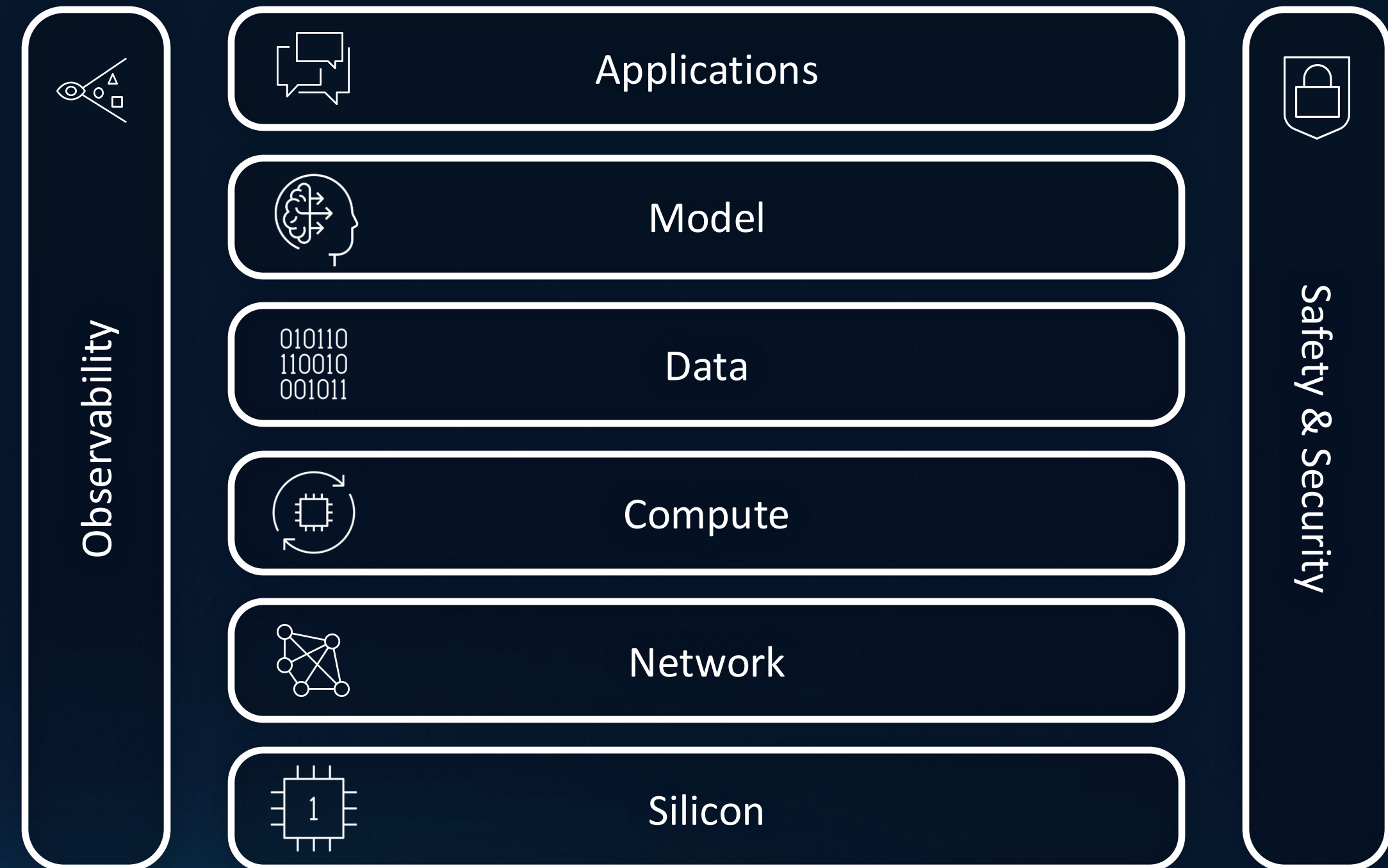
# Announcing Cisco Cloud Control

Unified identity | Common design language | Cross-product workflows | AgenticOps





Cisco is the critical  
infrastructure for the  
AI era





# Cisco TechClub

Lokální edukační on-line webináře každých 14 dní.

Začneme opět v září. ( Hezké prázdniny !)

Cisco TechClub  
hlavní portál



Cisco TechClub  
registrační stránka



Cisco TechClub  
Webex Space



The bridge to possible



