

# Cisco Tech Club CZ



## Vyzkoušejte sílu intuitivního IT



Andrej Jeleník  
Cisco Solution Architect  
9.4.2024

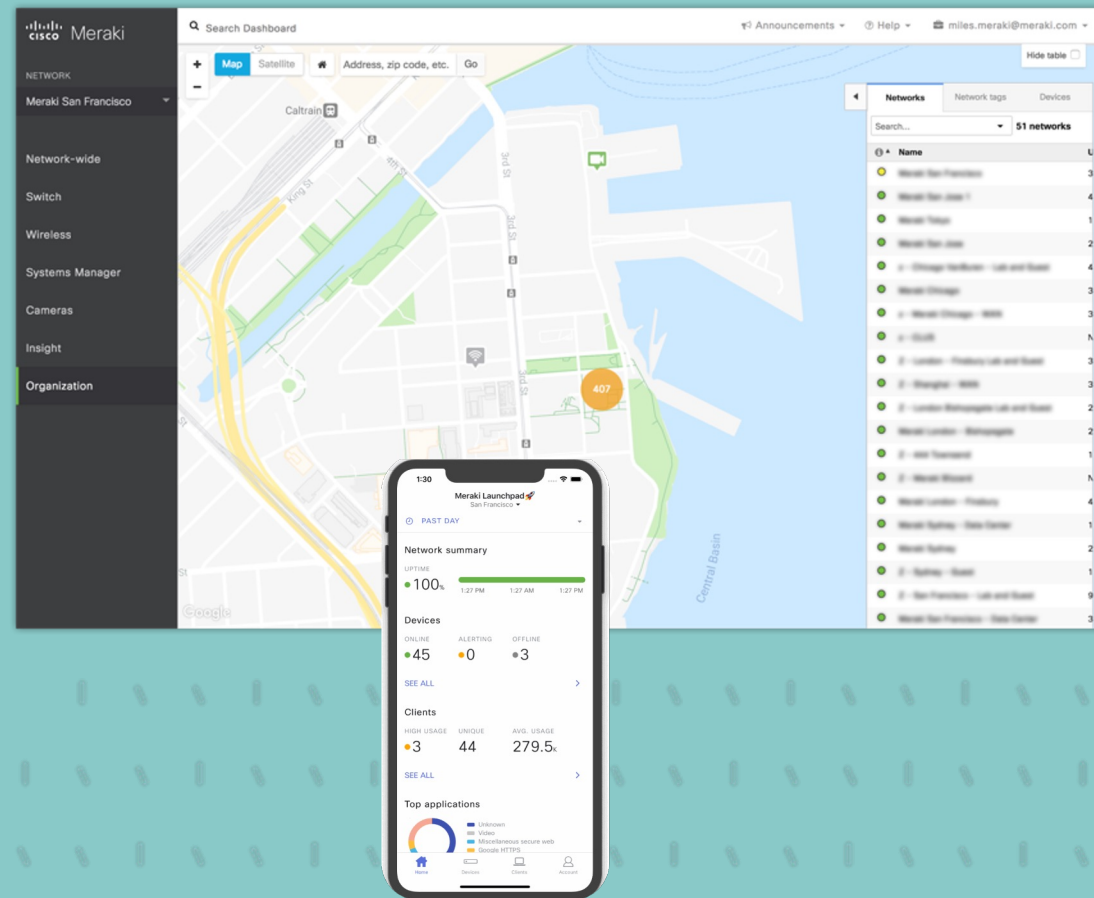
# Agenda

## Správa Meraki sítě

- Mobilní aplikace

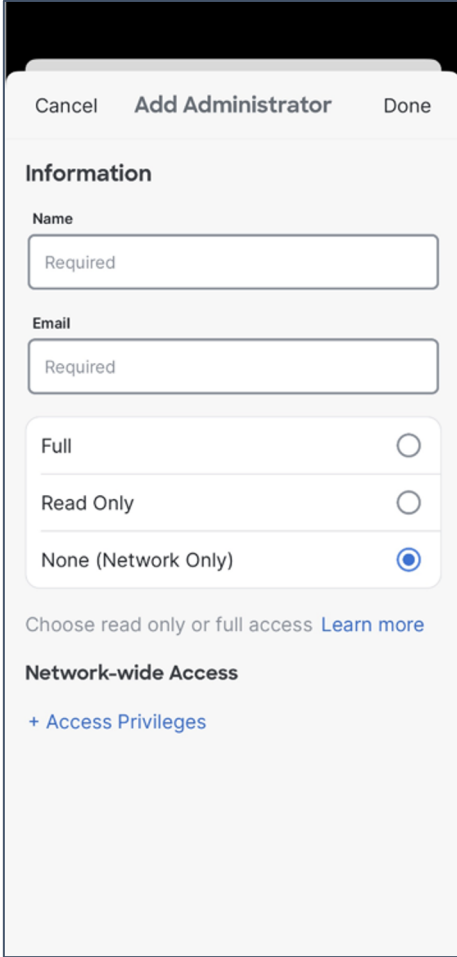
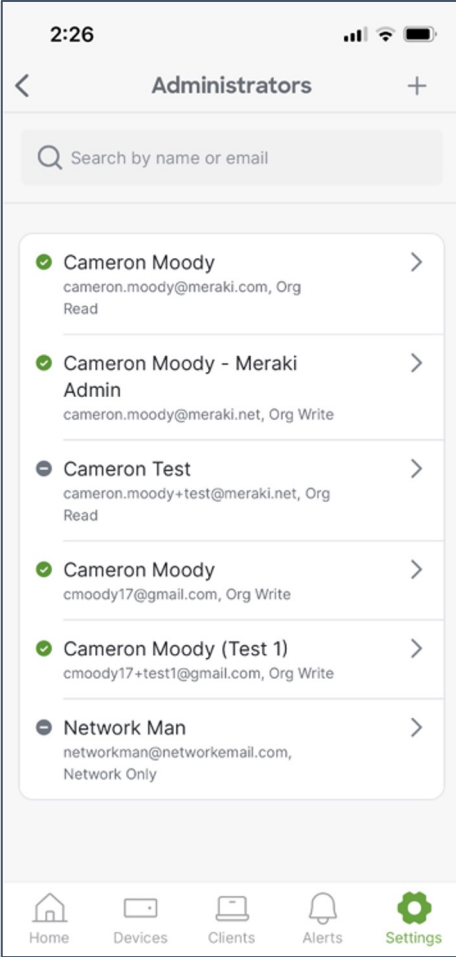
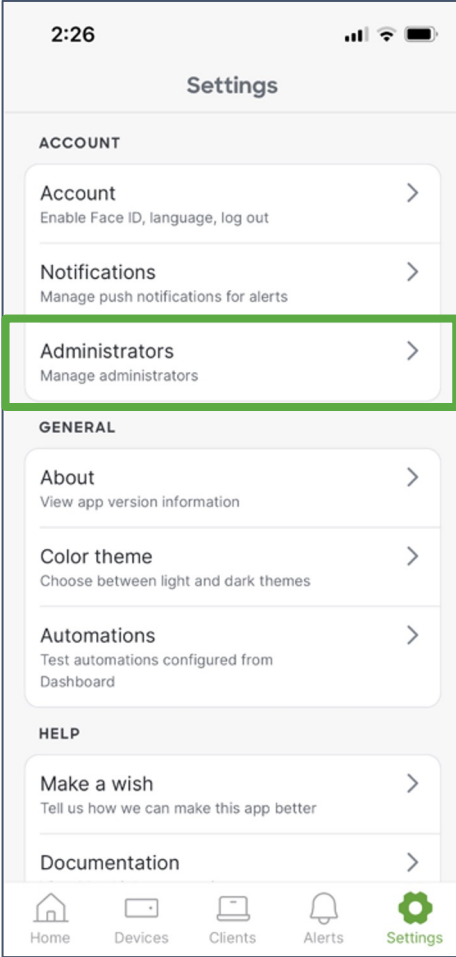
## Nové produkty a funkce

- Cisco+ Secure Connect
- SASE
- MX
- MR & MS
- MT & MV



# Mobile Admin Management

GA - App Version 4.74.0+

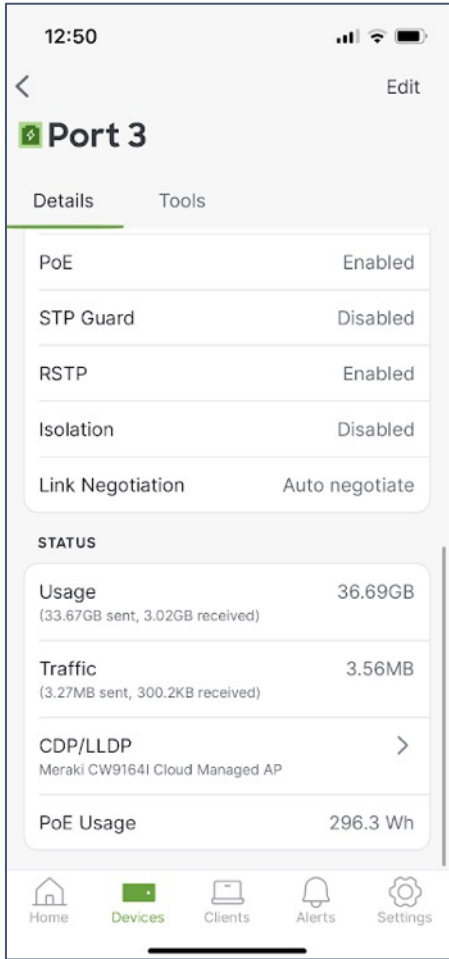
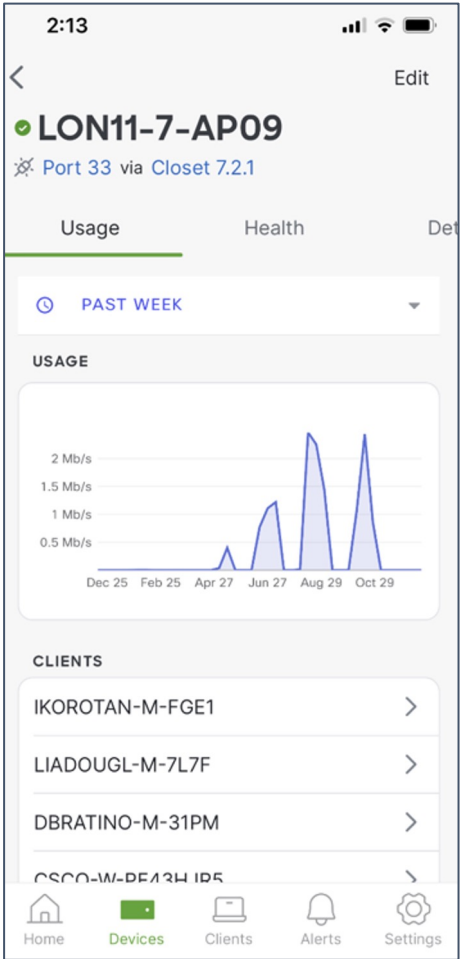
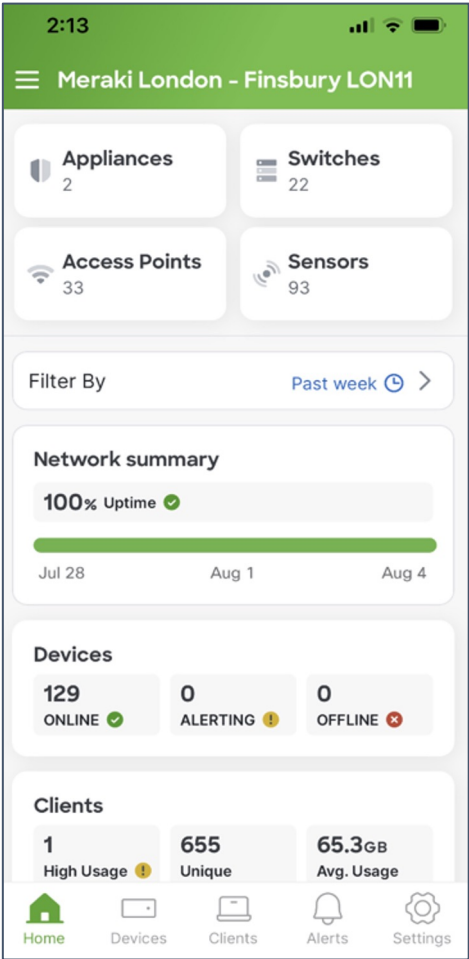


1. Log in with SSO
2. subdomain "meraki"
3. Try it now!



# Mobile: Magnetic & Switch Ports

GA for all users - App version 4.78.0





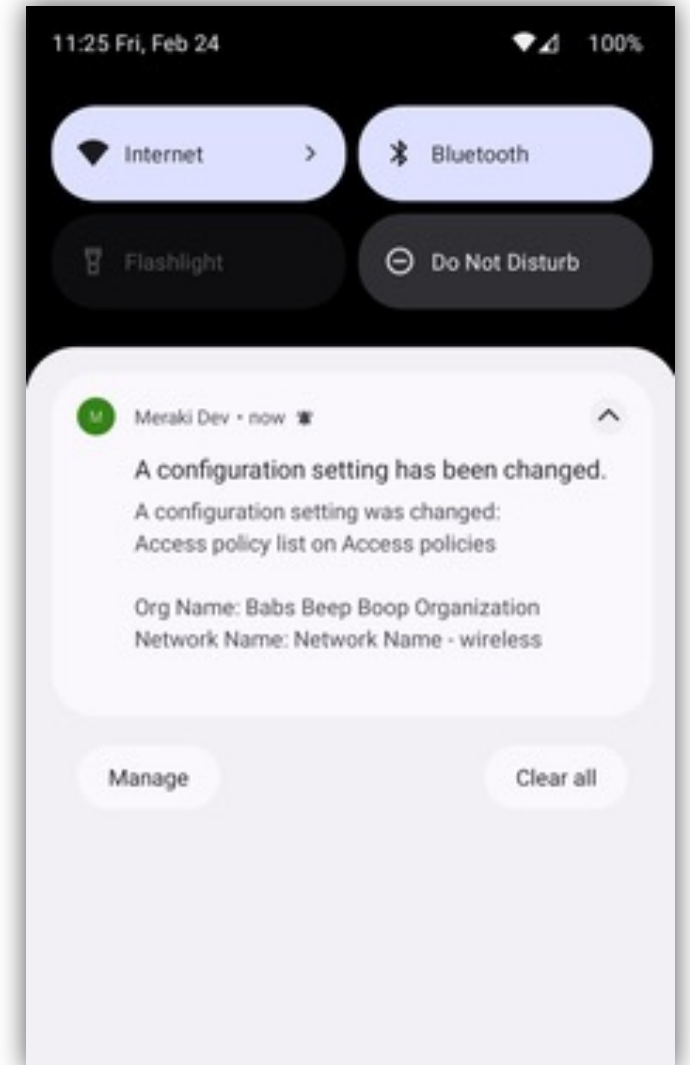
# New Alerts for Mobile App

## Eleven new alerts in Mobile App version 4.56.0

- Learn when configuration changes happen and exactly what changed
- Know when a rogue AP is detected so you can take action
- Get informed when network usage exceeds a set threshold so you can do something about it while there is still time
- Notify your security teams when alerted that Malware has been blocked
- Get alerts via push notifications as you move through your day

## New alerts include

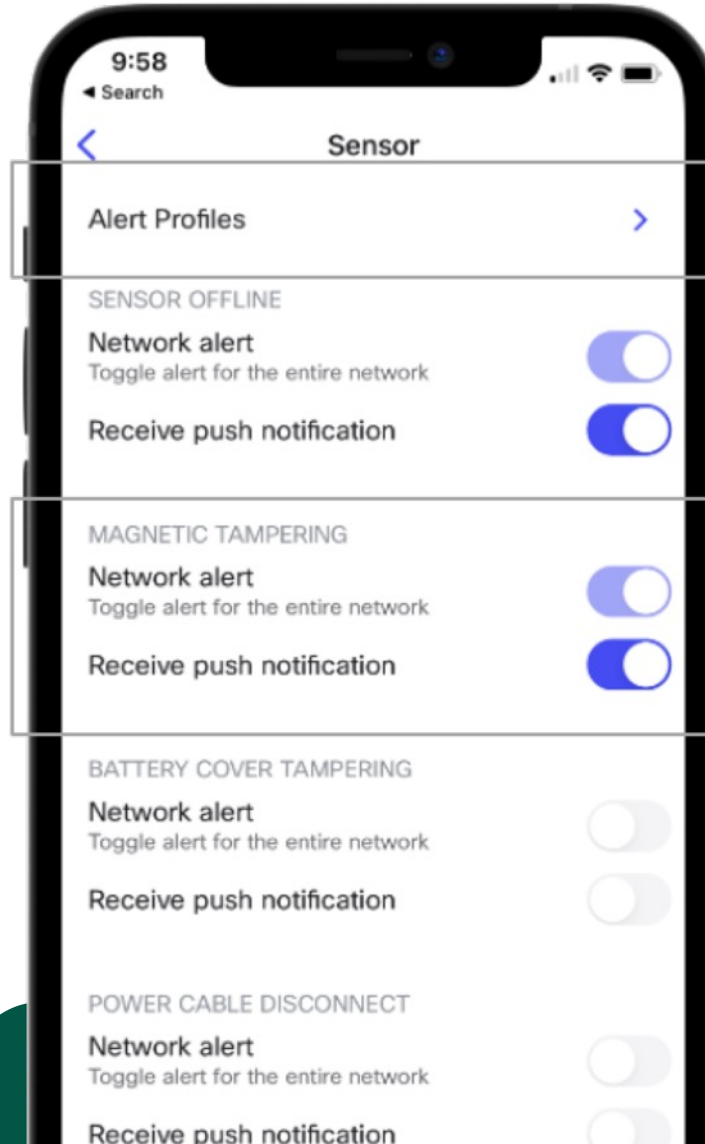
- Configuration settings changed
- A rogue AP is detected
- Network usage exceeds set threshold
- A gateway becomes a repeater
- Clients fail to connect to the wireless network
- Uplink IPv6 duplicate address detected
- The primary uplink status changes
- The DHCP lease pool is exhausted
- An IP conflict is detected
- Cellular connection state changes
- Malware is blocked



# Mobile Alerts & Notifications Update for MT

## Push notifications specific for MT

- 2 categories of alerts
- Alert profiles that users set up dealing with high temperature, water leak, etc.
- Maintenance alerts relating to tampering, low battery, device offline
- Previously, push notifications can only be opt into from the dashboard; now push is a truly personalized experience where users can opt in themselves



Enable **custom sensor alerts** as push notification

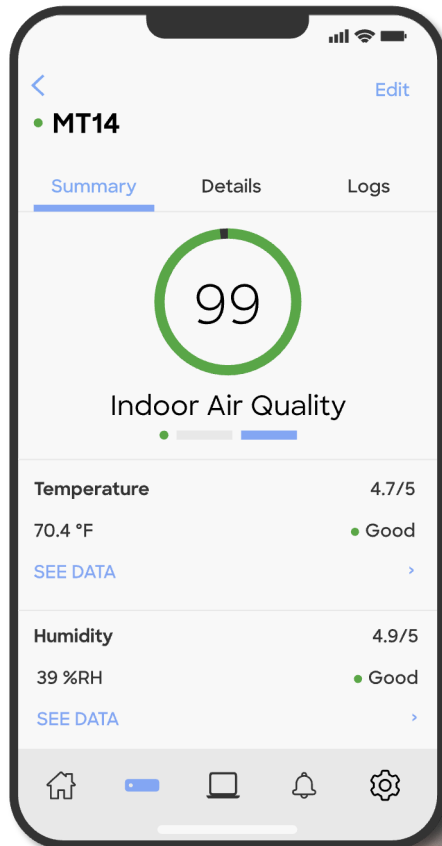


Opt into **device health alerts**



# Designed for mobile management

On-site? Off-site? Way off-site? Keep in touch with your spaces.



- Instant mobile access to facilities and air quality data
- Rapidly alert, identify, and troubleshoot issues anywhere in the world
- Equip facilities and site-specific teams with access and intelligence about spaces

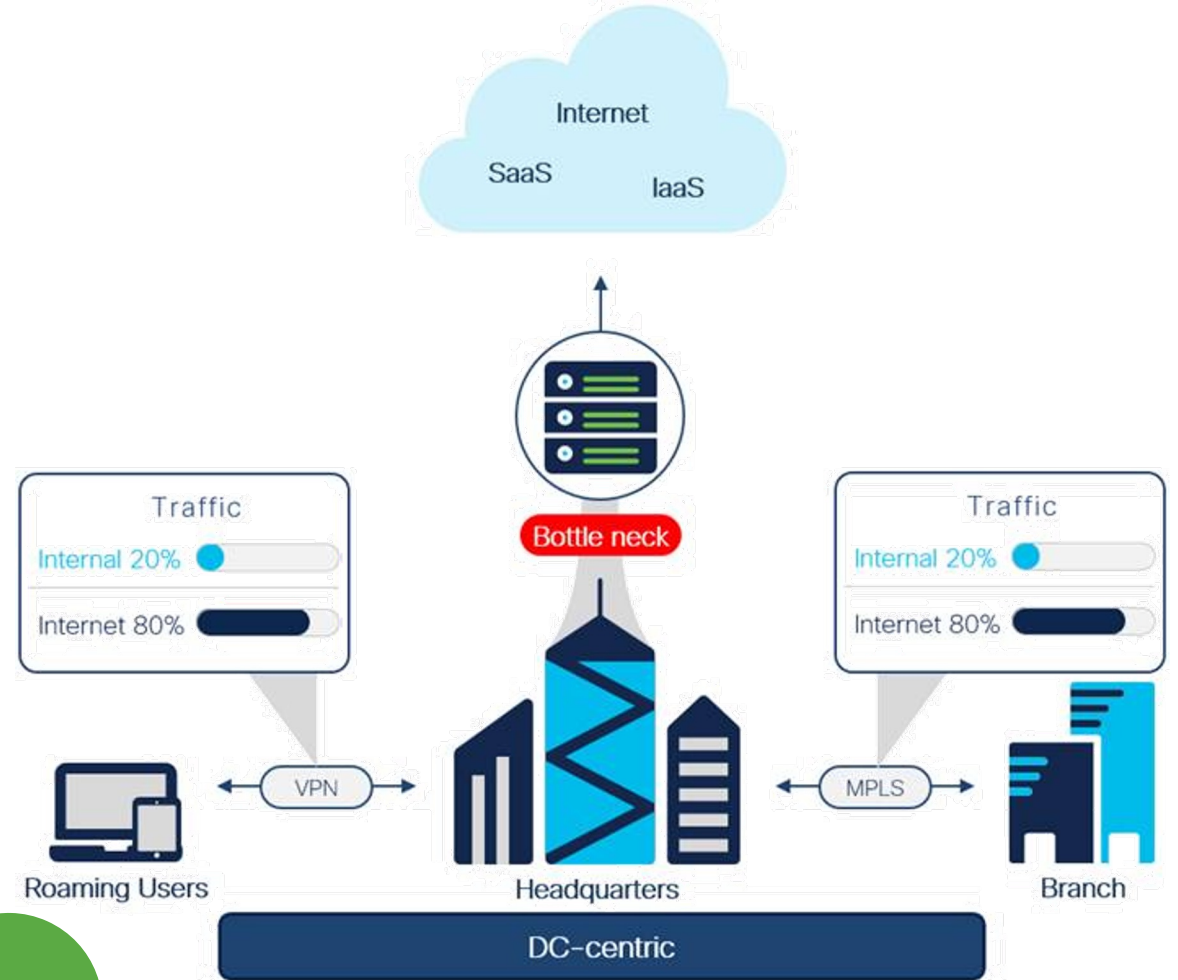


# Cisco+ Secure Connect



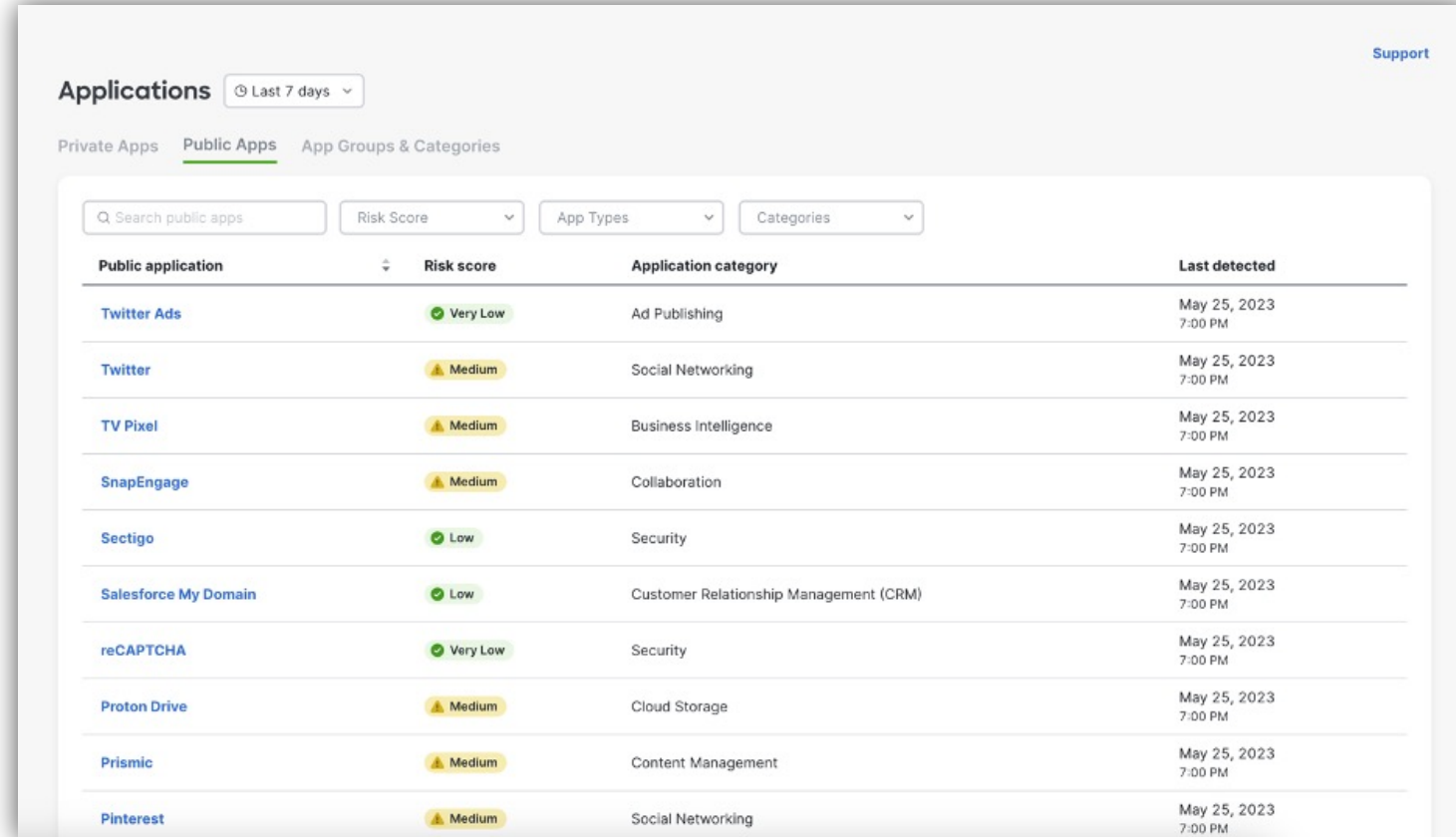
# Cisco SASE with CVD

- Cisco Validated Design is now ready for Cisco SASE with Cisco+ Secure Connect
- Solution validation testing includes DUO, ThousandEyes, Meraki MX, and Catalyst 8000 Edge Platform



# Public Application Monitoring within Cisco+ Secure Connect

- Single-page visibility into discovered:
  - Public Apps (helping manage shadow IT)
  - Private Apps
  - Categories/Groups used in policies
- Another step towards our single-pane-of-glass monitoring experience
- Will enable enhanced health monitoring and troubleshooting experiences in the future
- Bringing objects closer together to simplify SASE



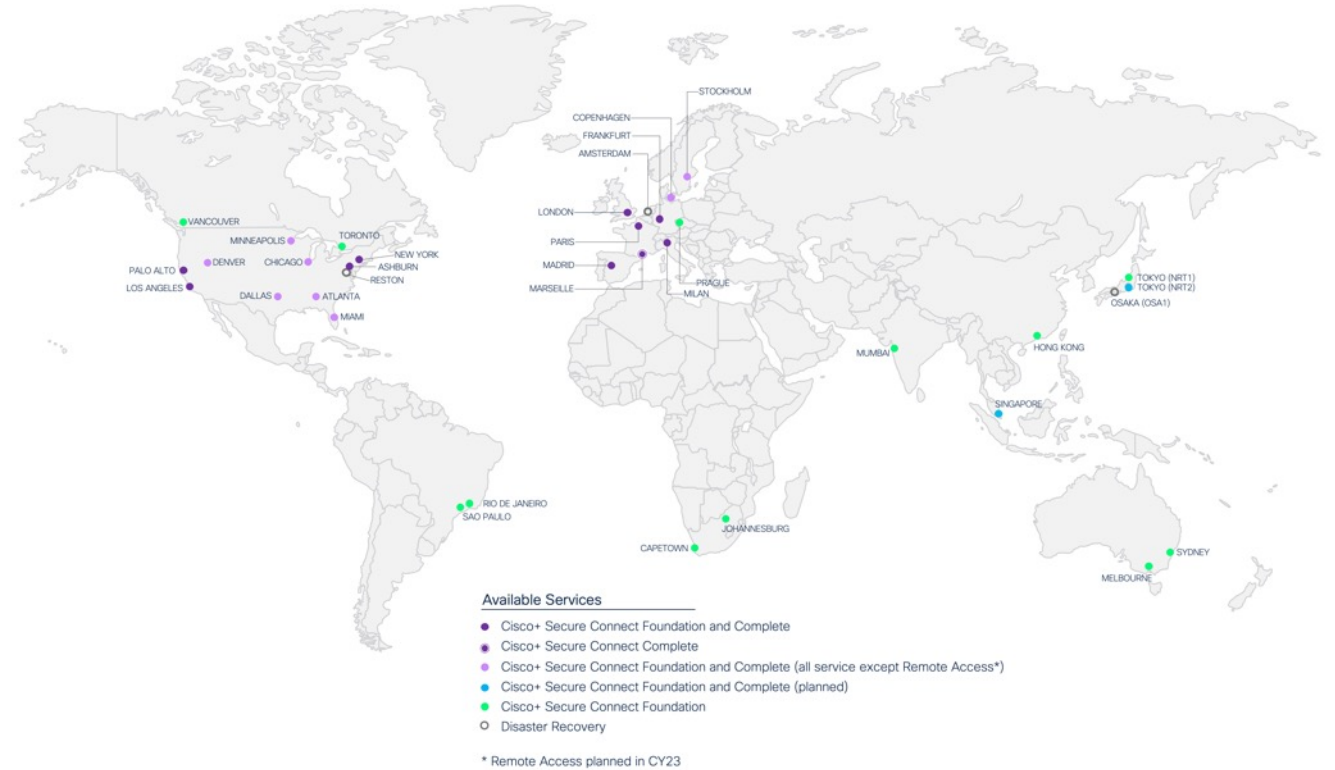
The screenshot displays the 'Applications' page in Cisco+ Secure Connect, filtered for 'Public Apps' over the 'Last 7 days'. The interface includes a search bar, filters for 'Risk Score', 'App Types', and 'Categories', and a table of application details.

Public application	Risk score	Application category	Last detected
Twitter Ads	Very Low	Ad Publishing	May 25, 2023 7:00 PM
Twitter	Medium	Social Networking	May 25, 2023 7:00 PM
TV Pixel	Medium	Business Intelligence	May 25, 2023 7:00 PM
SnapEngage	Medium	Collaboration	May 25, 2023 7:00 PM
Sectigo	Low	Security	May 25, 2023 7:00 PM
Salesforce My Domain	Low	Customer Relationship Management (CRM)	May 25, 2023 7:00 PM
reCAPTCHA	Very Low	Security	May 25, 2023 7:00 PM
Proton Drive	Medium	Cloud Storage	May 25, 2023 7:00 PM
Prismic	Medium	Content Management	May 25, 2023 7:00 PM
Pinterest	Medium	Social Networking	May 25, 2023 7:00 PM

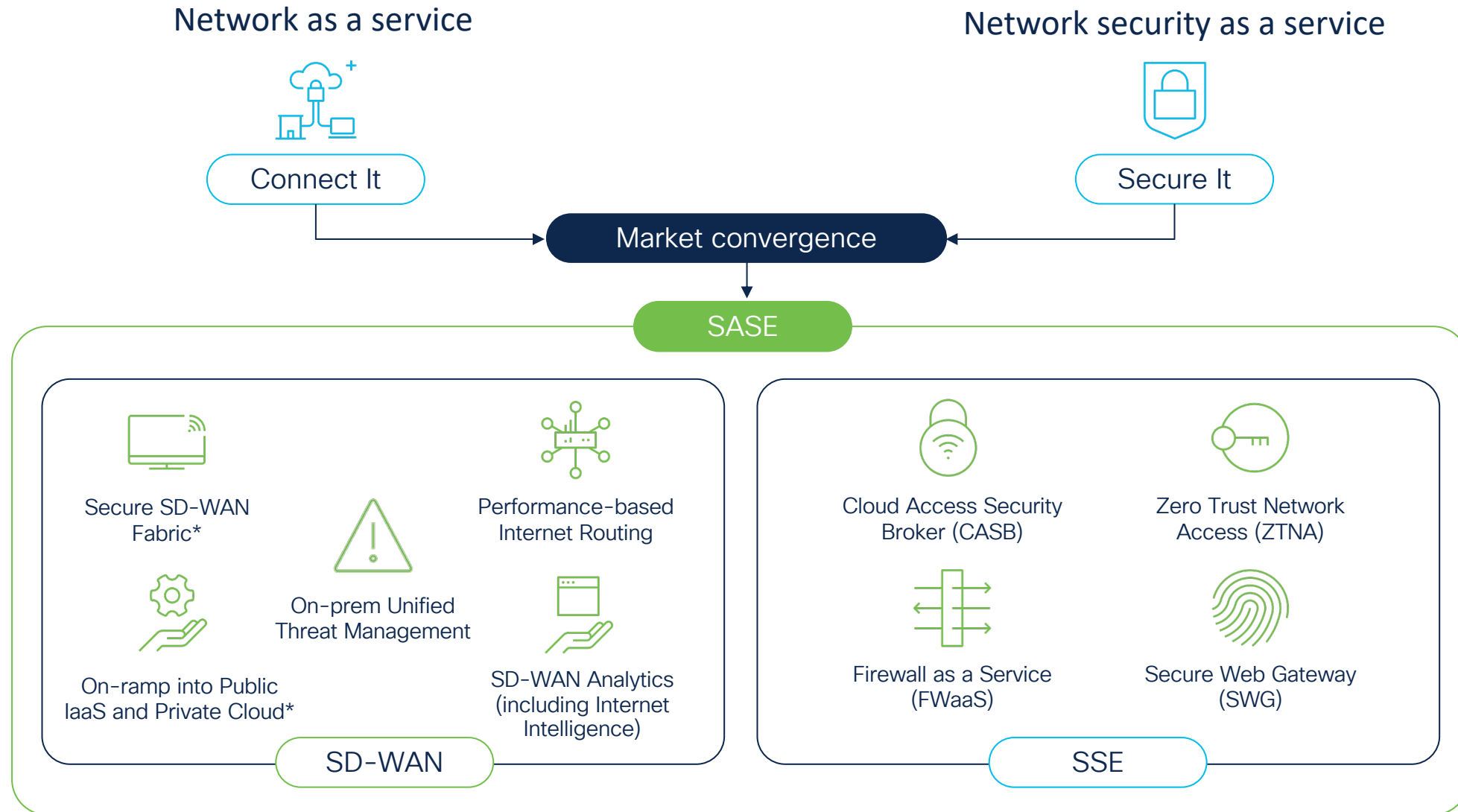


# Cisco+ Secure Connect Data Center List

- Find the latest info for services offered per data center globally
- Shows which DCs provide the 2 available service offerings
  - Cisco+ Secure Connect Complete
  - Cisco+ Secure Connect Foundation



# Secure Access Service Edge (SASE)



# Cisco+ Secure Connect Package Options

Functionality	Foundation Branch Access (SIA)		Complete Branch Access + Remote Access (SIA, SRA, SPA)	
	Essentials	Advantage	Essentials	Advantage
Unified security policy	✓	✓	✓	✓
Secure Web Gateway	✓	✓	✓	✓
URL filtering	✓	✓	✓	✓
Secure Malware Analytics (sandbox)	500 submissions/day	Unlimited Submissions	500 submissions/day	Unlimited Submissions
Cloud Access Security Broker (cloud app discovery, risk scoring, blocking)	✓	✓	✓	✓
Cloud Malware Detection	Up to 2 Apps	All supported Apps	Up to 2 Apps	All supported Apps
DNS-Layer Security	✓	✓	✓	✓
L3/L4 Cloud-Delivered Firewall	✓	✓	✓	✓
L7 Cloud-delivered Firewall	-	✓	-	✓
IPS Firewall	-	✓	-	✓
Fabric interconnect	✓	✓	✓	✓
Client-based Access (AnyConnect VPN)	10 Free Users*	10 Free Users*	✓	✓
Clientless Browser Based Access	-	-	Up to 10 apps	Up to 300 apps
Granular user, app-based access policy	*	*	✓	✓
SAML authentication	*	*	✓	✓
Built-in IdP	*	*	✓	✓
Posture and contextual access control	*	*	✓	✓
Reporting (Remote Access)	*	*	✓	✓
24x7 unified support	✓	✓	✓	✓

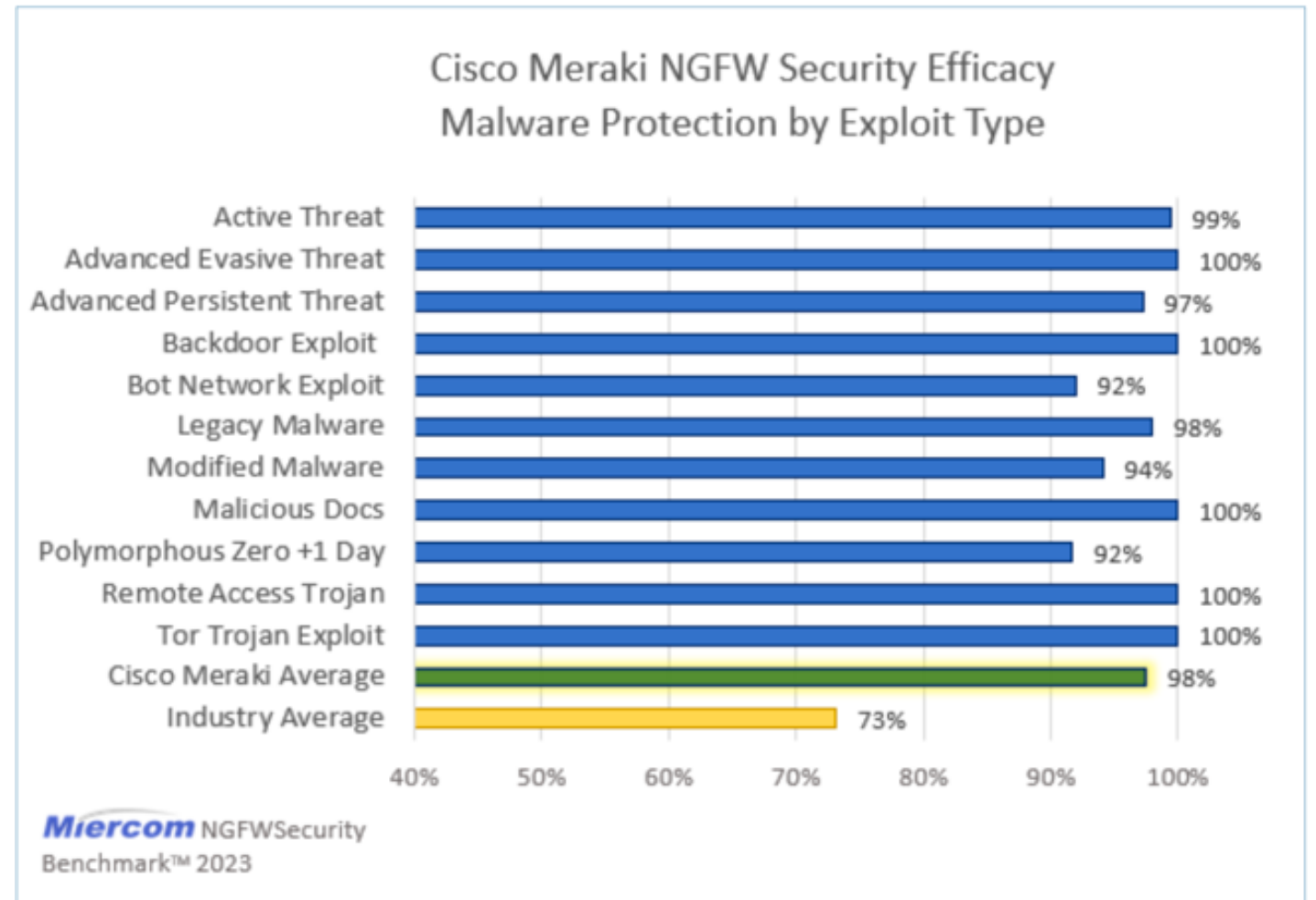
# MX

Security & SD-WAN



# Meraki proved 98% Malware Detection Efficacy

- Source: *Miercom Cisco Security and SD-WAN Efficacy and Performance Evaluation*, Aug. 2023
- Report includes MX68, MX85, MX95, MX105
- 25% better overall compared to competitive industry average of other NGFW security products tested
- Cisco Meraki prevented 100% of AET, Backdoor, Malicious Docs, RAT, and TOR exploits
- Provided excellent protection against both active and modified threats
- The active threat and modified malware samples were fresh from 2023 and likely not in any signature databases



# New MX Sizing Guide

- A new [public facing sizing guide](#) is available!
- Data sheets have also seen an update.



### Network performance benchmarks

Industry-standard benchmarks are designed to help you compare MX appliances to those from other vendors. These tests assume perfect network conditions with ideal traffic patterns. When measuring maximum throughput for a certain feature, all other features are disabled. All throughput performance results below are achieved by running MX firmware version 18.107. Actual results in production networks will vary.

	Z3/C	Z4	MX67/68	MX75	MX85	MX95	MX105	MX250	MX450	vMX Small	vMX Medium	vMX Large
Max stateful (Layer 3) firewall throughput in NAT mode with large payload file transfers	100 Mbps	500 Mbps	600 Mbps	1 Gbps	1 Gbps	2 Gbps	3 Gbps	4 Gbps	5 Gbps			
Max Stateful (Layer 3) Firewall Throughput in NAT mode (EMIX) <sup>1</sup>	100 Mbps	500 Mbps	600 Mbps	1 Gbps	1 Gbps	2 Gbps	3 Gbps	4 Gbps	4 Gbps			
Max VPN throughput with large payload files transfers	50 Mbps	250 Mbps	300 Mbps	500 Mbps	500 Mbps	800 Mbps	1 Gbps	1 Gbps	2 Gbps	250 Mbps	500 Mbps	1 Gbps
Max VPN throughput (EMIX) <sup>2</sup>	50 Mbps	250 Mbps	300 Mbps	500 Mbps	500 Mbps	800 Mbps	1 Gbps	1 Gbps	1.5 Gbps	250 Mbps	500 Mbps	1 Gbps
Max throughput with all security features enabled <sup>3</sup>	N/A	300 Mbps	300 Mbps	700 Mbps	700 Mbps	2 Gbps	2.5 Gbps	2 Gbps	2.5 Gbps			
Max site-to-site VPN tunnels <sup>4</sup>	10	25	50	75	200	500	1,000	3,000	5,000	50	250	1,000
Recommended maximum site-to-site VPN tunnels <sup>5</sup>	4	8	50	75	100	250	500	1,000	1,500	50	250	1,000
Recommended maximum client VPN tunnels	1	2	50	75	100	250	250	500 <sup>6</sup>	500 <sup>6</sup>	50	250	500 <sup>6</sup>
WAN failover <sup>7</sup>	<5 seconds											
Auto VPN tunnel failover <sup>7</sup>	Sub-second											
Dynamic path selection <sup>7</sup>	Sub-second											



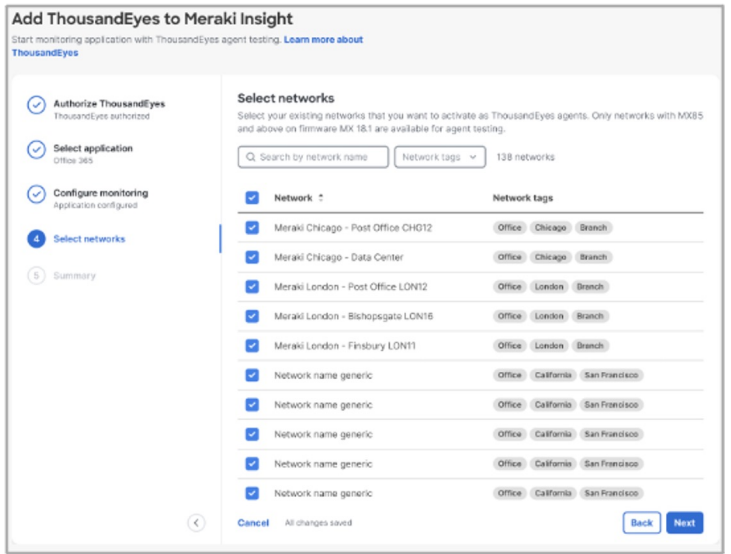




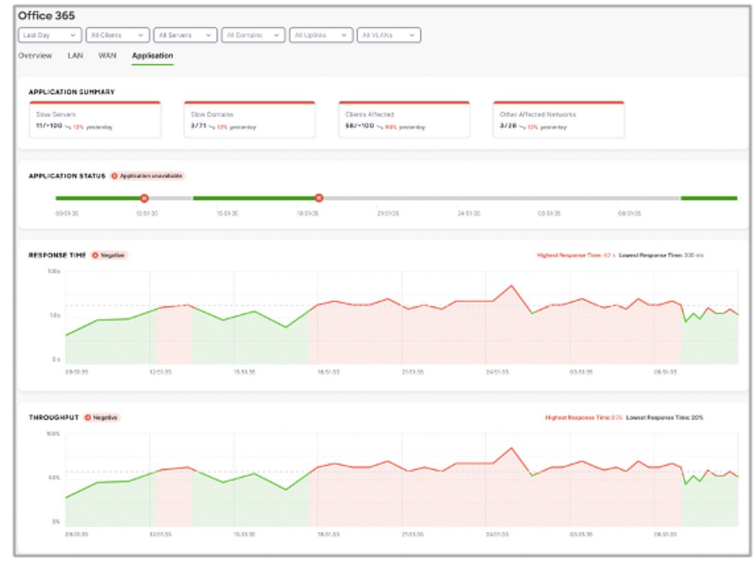
# ThousandEyes Agent

## Powering up SD-WAN with ThousandEyes

**Simple and Quick** turn-key deployments for large networks via Meraki dashboard



**Deeper and broader** performance analysis from each client to all On-prem + Cloud applications both via DIA and overlay



**“One stop shop”** Licensing with SDW+

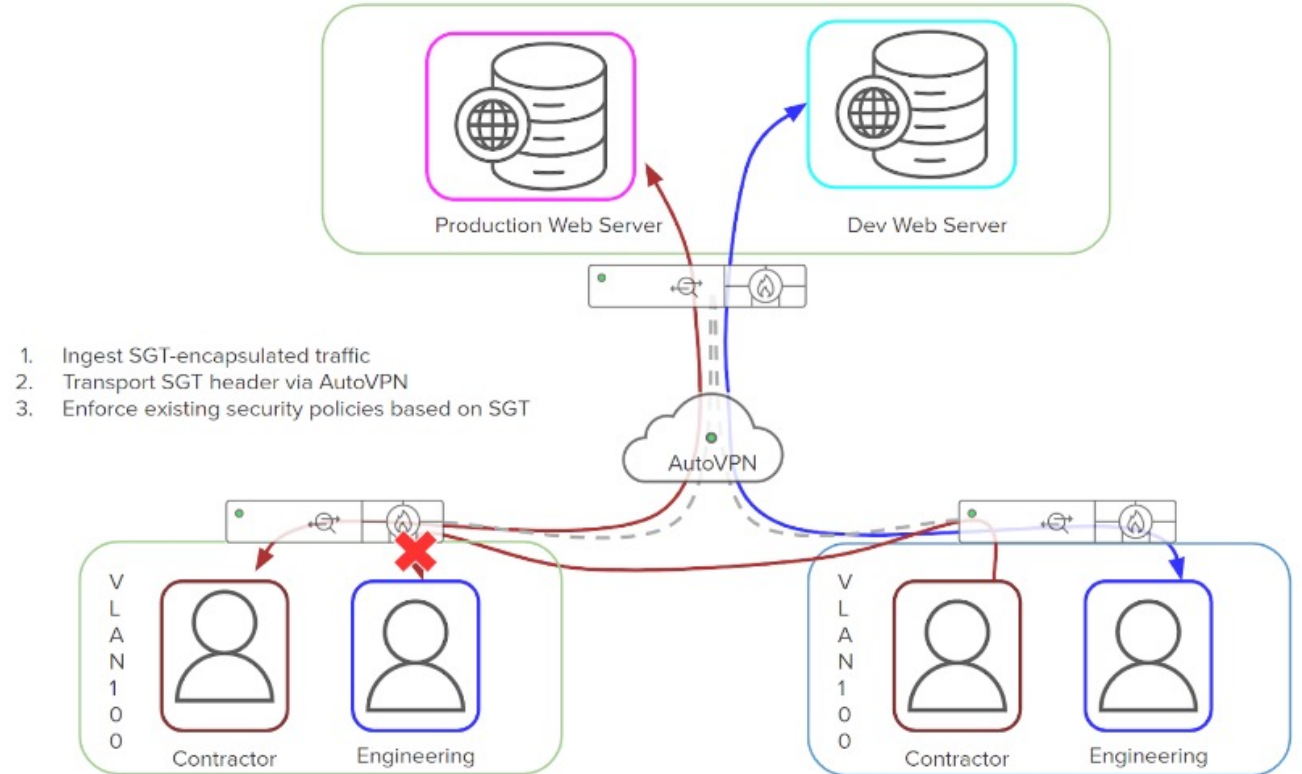
**SD-WAN Plus**  
 Sites with critical SaaS usage

**FEATURE HIGHLIGHTS**

3-click secure SD-WAN connectivity	●
L7 stateful firewall	●
Advanced Malware Protection (AMP)	●
Intrusion detection & prevention	●
Content filtering	●
Internet intelligence from ThousandEyes	●
Smart L7 local internet breakout	●
Performance-based internet routing	●
ML-powered SD-WAN analytics	●
Mixed license environment	●

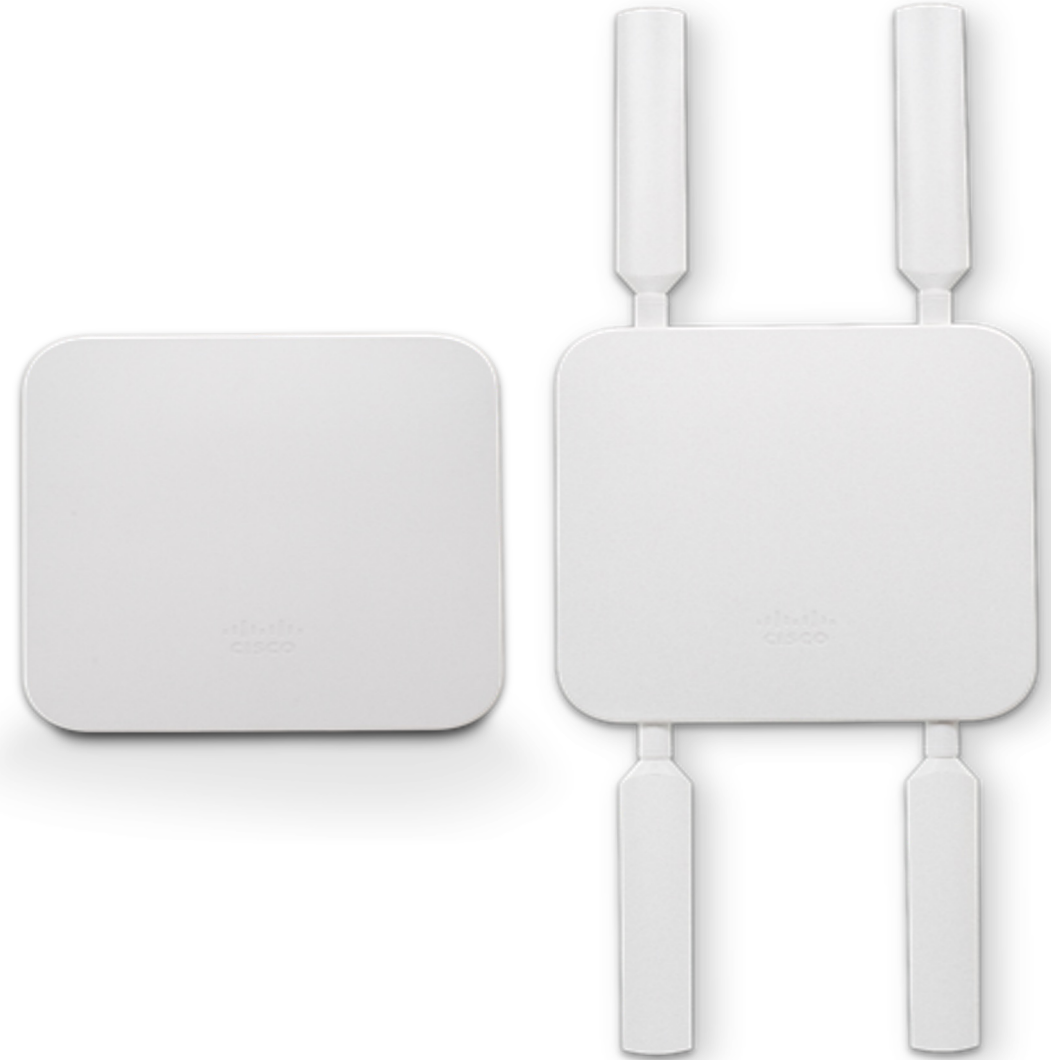
# Adaptive Policy on MX/Z

- Beginning with MX18.106, Adaptive Policy (AdP) is now supported on [most MX and Z appliances](#)
- AdP using inline SGTs is compatible with [many other Cisco solutions](#), including [Cisco ISE](#)
- See [this document](#) for AdP and support on other platforms



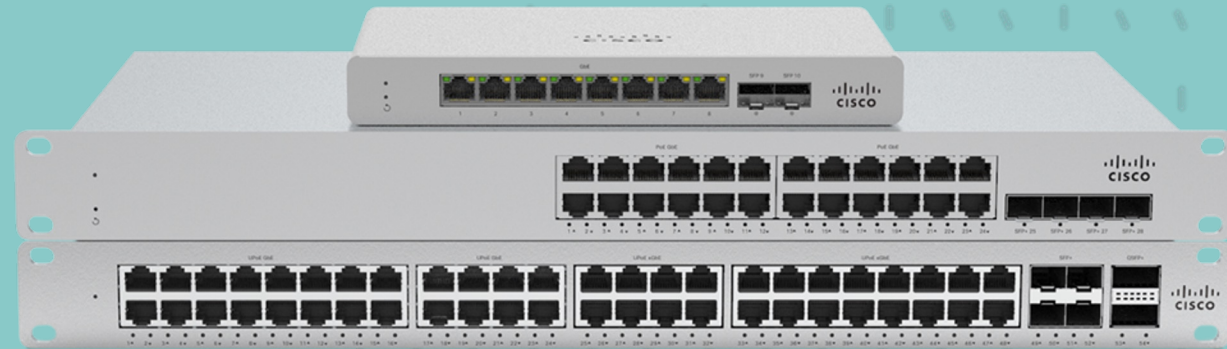
# MG51 & MG51E Cellular Gateways

- 5G always-on connected experiences anywhere
- Primary connectivity
- Category 20
- 2 Gbps / 300 Mbps (down/up)
- Dual SIM
- IP67-rated: mountable anywhere indoor or outdoor
- Cellular is not just a backup option anymore, it can connect your entire branch



# MR & MS

Wireless and Wired



# Cisco cloud-managed switching portfolio



Meraki intuitive experience



Day 0

Configuration before delivery



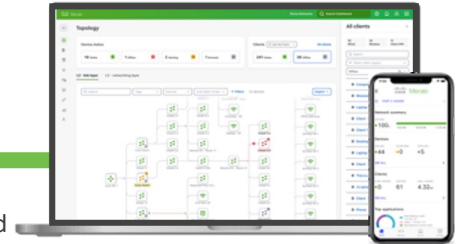
Day 1

Devices connected and update from the cloud



Day n

Remote manage and update



MS130R

IP30, 30W POE+

MS130<sup>1</sup>

2.5GbE mGig +10G SFP+; PoE+



MS120/125



MS210/225

80G physical stacking



MS250



C9300L-M

320G Physical Stacking



MS350/355



C9300/X-M

1T physical stacking + StackPower



MS390<sup>2</sup>



C9300-M

480G physical stacking + StackPower



MS410/425



C9300/X-M

480G/1T physical stacking + StackPower

COMMON POLICY | SCALABLE SEGMENTATION | END-TO-END NETWORK MANAGEMENT | ZERO-TOUCH PROVISIONING

1. **Future release:** MS130 mGig (-X) models and MS130R are hardware-ready for the Adaptive Policy feature with a future firmware upgrade and advanced license.
2. MS390 software support will merge in Catalyst Switching firmware development

# Catalyst Meraki 9300 Series

Orderable with Meraki Day-0 Experience

## Gigabit

Up to 1 GbE



### C9300 24/48 T

- 24/48x 1G copper
- Data only
- 40G/10G/1G fiber modular uplink options

### C9300 24/48 P

- 24/48x 1G copper
- 30 W PoE+
- 40G/10G/1G fiber modular uplink options



### C9300 24/48 U

- 24/48x 1G copper
- 60 W UPoE
- 40G/10G/1G fiber/10G mGig copper modular uplink options

## Multigig

Up to 10 GbE (mGig)



### C9300 24 UX

- 24x 10G mGig
- 60 W UPoE
- 40G/10G/1G fiber modular uplink option

### C9300 48 UXM

- 36x 2.5G mGig and 12x 10G mGig
- 60 W UPoE
- 40G/10G/1G fiber uplink option



### C9300 48 UN

- 48x 5G mGig
- 60 W UPoE
- 40G/10G/1G fiber/10G mGig copper modular uplink option

## Fiber aggregation

10/1 GbE SFP+ fiber



### C9300 24S/48S

- 24/48 port 1G SFP
- 40G/10G/1G fiber modular uplink options



### C9300X 12Y

- 10G/1G (SFP28)
- 100G hardware-based IPsec



### C9300X 24Y

- 10G/1G (SFP28)
- 100G hardware-based IPsec

Gigabit and multi-gig SKUs target ship date: FY24 Q2

Fiber SKUs migration public preview is available; -M SKUs are coming in 2H CY24.

## Catalyst 9300 modular uplinks



4x 10G/1G SFP



8x 1/10G SFP/SFP+



2x 100G/40G SFP/SFP+



2x 40G QSFP

## SFP/direct attach cables

SFP-1GB-SX  
SFP-1GB-LX10

SFP-10GB-LR  
SFP-10GB-ER  
SFP-10GB-SR  
SFP-10GB-LRM

QSFP-40G-LR  
QSFP-40G-SR4  
QSFP-40G-CSR4  
QSFP-40G-SR-BD

CBL-TA-1M  
CBL-TA-3M

All relevant Meraki optics are supported on C9300-M models.



50 cm-1 m-3 m



30 cm-150 cm

## StackWise® and StackPower cables

## Platinum-rated power supplies



315 W AC



715 W AC/DC



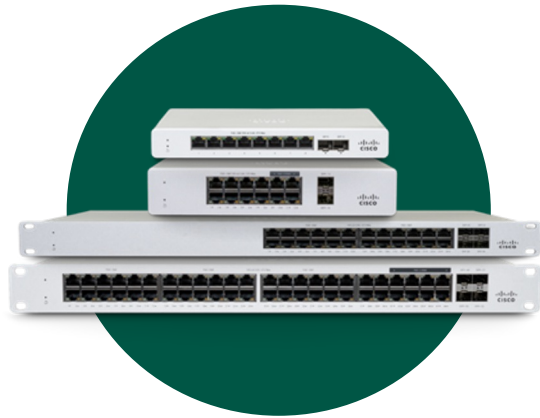
1100 W AC

## Modular fan



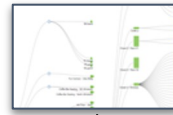


# MS130 and MS130R (Ruggedized)



**MS130**  
indoor switches

Meraki dashboard



Reliable connectivity and  
security for all  
your environments



**MS130R**  
ruggedized switch



Boost throughput with  
cost-effective mGig options



Connect all your devices with  
PoE/PoE+ options



Extend your network to ruggedized  
environments

# Switching Overview

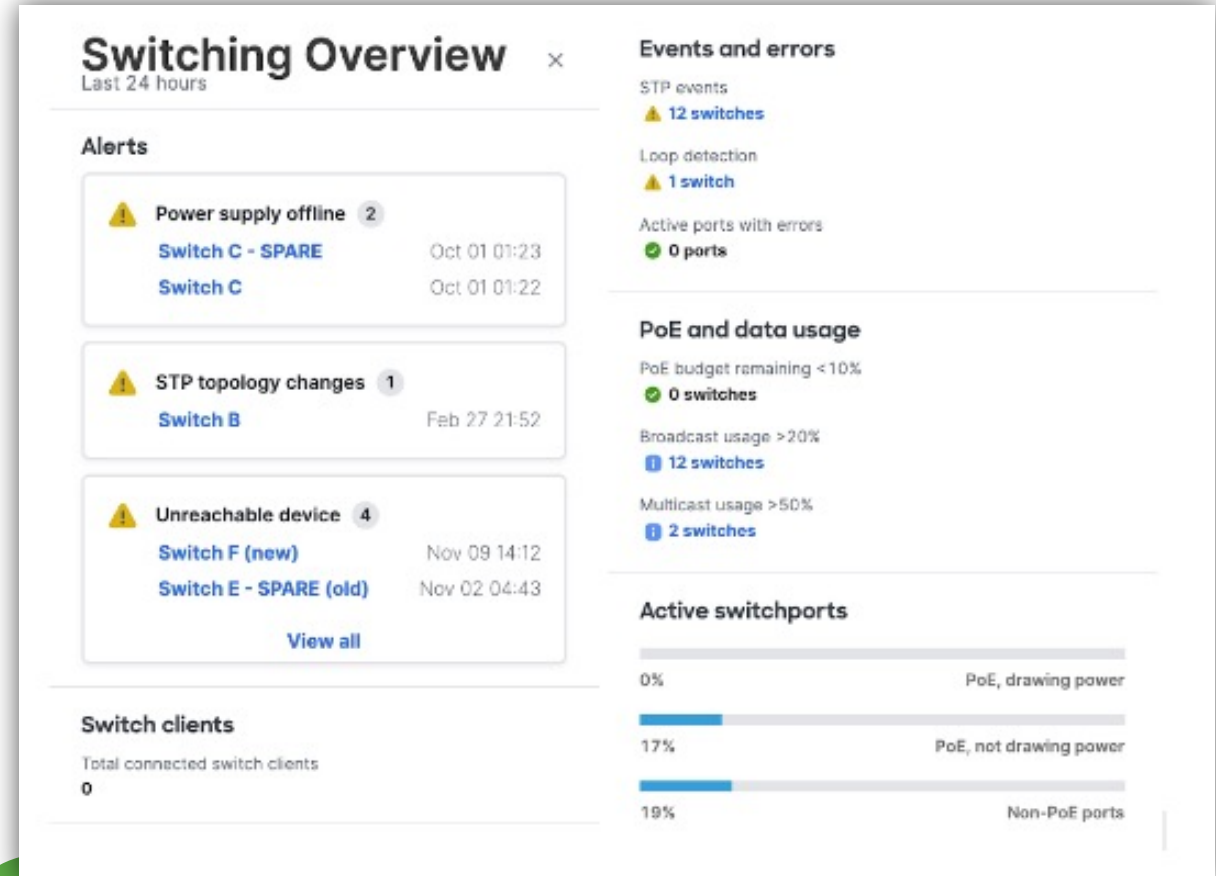
Now Available

## Benefits

- Comprehensive view of the status and performance of your switch infrastructure
- Enhanced monitoring experience
- Reduced click-time
- Ability to forecast future network needs

## The Switching Overview panel

- Switch-specific alerts
- Connected total switch clients
- Events and errors
- PoE and data usage
- Active switchport capacity and utilization



# Meraki Wi-Fi 6 for every space

Ideal for small to medium-sized deployments

Best-in-class; flexibility

Mission-critical;  
performance

High performance

Ultra-high performance



## MR-36

- Dual 2x2:2
- 1.5 Gbps Aggr. BW
- 1 Gbps GE
- Power options: PoE, DC
- IoT-ready + Bluetooth® 5.x
- Medium density

## MR-36H

- Dual 2x2:2
- 1.5 Gbps Aggr. BW
- 1 Gbps Uplink & Passthrough, 1 GE PoE Out, 2 GE Port
- Power options: PoE, DC
- IoT-ready + Bluetooth® 5.x
- Low density

## MR-44

- 2x2:2 + 4x4:4
- 3.0 Gbps Aggr. BW
- 2.5 Gbps mGig Port
- Power options: PoE, DC
- IoT-ready + Bluetooth® 5.x
- Medium density

## MR46(E)

- Dual 4x4:4
- 3.5 Gbps Aggr. BW
- 2.5 Gbps mGig Port
- Power options: PoE, DC
- IoT-ready + Bluetooth® 5.x
- External antenna (46E)
- High density

## MR56

- 4x4:4 + 8x8:8
- 5.9 Gbps Aggr. BW
- 5 Gbps mGig Port
- Power options: PoE, DC
- IoT-ready + Bluetooth® 5.x
- Ultra-high density

4-radio = 2.4 GHz and 5 GHz client-serving radios, dual-band scanning radio, Bluetooth® Low Energy radio

OFDMA (DL/UL)

MU-MIMO (DL/UL)

Target wake time

Bluetooth® 5.0

# Meraki Wi-Fi 6 outdoor access points

Ideal for small to medium-sized deployments

Best-in-class; flexibility

High performance

Ultra-high performance

## MR-76

- Dual 2x2:2
- 1.5 Gbps Aggr. Bandwidth
- Power options: 802.3 af PoE
- IoT-ready + Bluetooth® 5.x
- Ruggedized
- Four external N-type connectors
- Medium density
- High performance



## MR-86

- Dual 4x4:4
- 3.5 Gbps Aggr. Bandwidth
- Power options: 802.3at PoE
- IoT-ready + Bluetooth® 5.x
- Ruggedized
- Four external N-type connectors
- High density
- Ultra-high performance



4-radio = 2.4 GHz and 5 GHz client-serving radios, dual-band scanning radio, Bluetooth® Low Energy radio

OFDMA (DL/UL)

MU-MIMO (DL/UL)

Target wake time

Bluetooth® 5.0

# Wi-Fi 6E access points

## Ideal for small to medium-sized deployments



### CW9162I-MR

- 2x2 + 2x2 + 2x2
- 2.5 Gbps mGig
- Power options: PoE, DC
- IoT-ready + Bluetooth® 5.x
- USB 4.5 W
- General purpose
- Medium density

## Best-in-class; flexibility



### CW9164I-MR

- 2x2, 4x4, 4x4
- 2.5 Gbps mGig
- Power options: PoE, DC
- IoT-ready + Bluetooth® 5.x
- USB 4.5 W
- High performance
- High density

## Mission-critical; performance



### CW9166I-MR

- 4x4 + 4x4 + 4x4 (XOR 5/6)
- 5 Gbps mGig
- Flex radio – dual 5 GHz
- Power options: PoE, DC
- IoT-ready + Bluetooth® 5.x
- USB 4.5W
- Ultra-high performance
- High density

## Mission-critical; performance



### MR57

- 4x4, 4x4, 4x4 (XOR 5/6)
- Dual 5 Gbps mGig, power pool, active failover \*
- PoE redundancy
- Flex radio - dual 5 GHz
- IoT-ready + Bluetooth® 5.x
- USB 9W
- Ultra-high performance
- High density

*\*Available in Future*

Full radio capability (6 GHz @ LPI) on single 30W PoE+ and support for SP\*

Dedicated scanning radio

Same bracket; industrial design

Air Marshal for WIDS/WIPS

USB

# Catalyst 9166D1 Access Point

Orderable: 15 Aug. 2023

[FAQs](#); [Launch Guide](#); [Data Sheet](#)  
[MR Data Sheet](#)

Posted: 19 July; Updated 14 Aug.

**PIDs:** CW9166D1-{MR,A,B,E,F,Q,ROW,Z}

**Orderability:** 8/15

**FCS- X:** 8/25 - 10/6

**FCS- MR:** 11/15

**List Price:** \$ 2795



## Hardware highlights

- Penta-radio architecture
- 5 mGig PoE port (optional DC power)
- IoT capable (app hosting, USB port)

## Feature highlights

- First integrated directional antenna in a Wi-Fi 6E certified AP
- Manage with Catalyst 9800 WLC+ Catalyst Center or Meraki Dashboard
- Globally available for use with 6GHz spectrum (for regions where 6GHz is not yet available, defaults to dual 5GHz client radios)

## Optional Accessories

- CW-MNT-ART2-00 | Articulating arm (\$200)



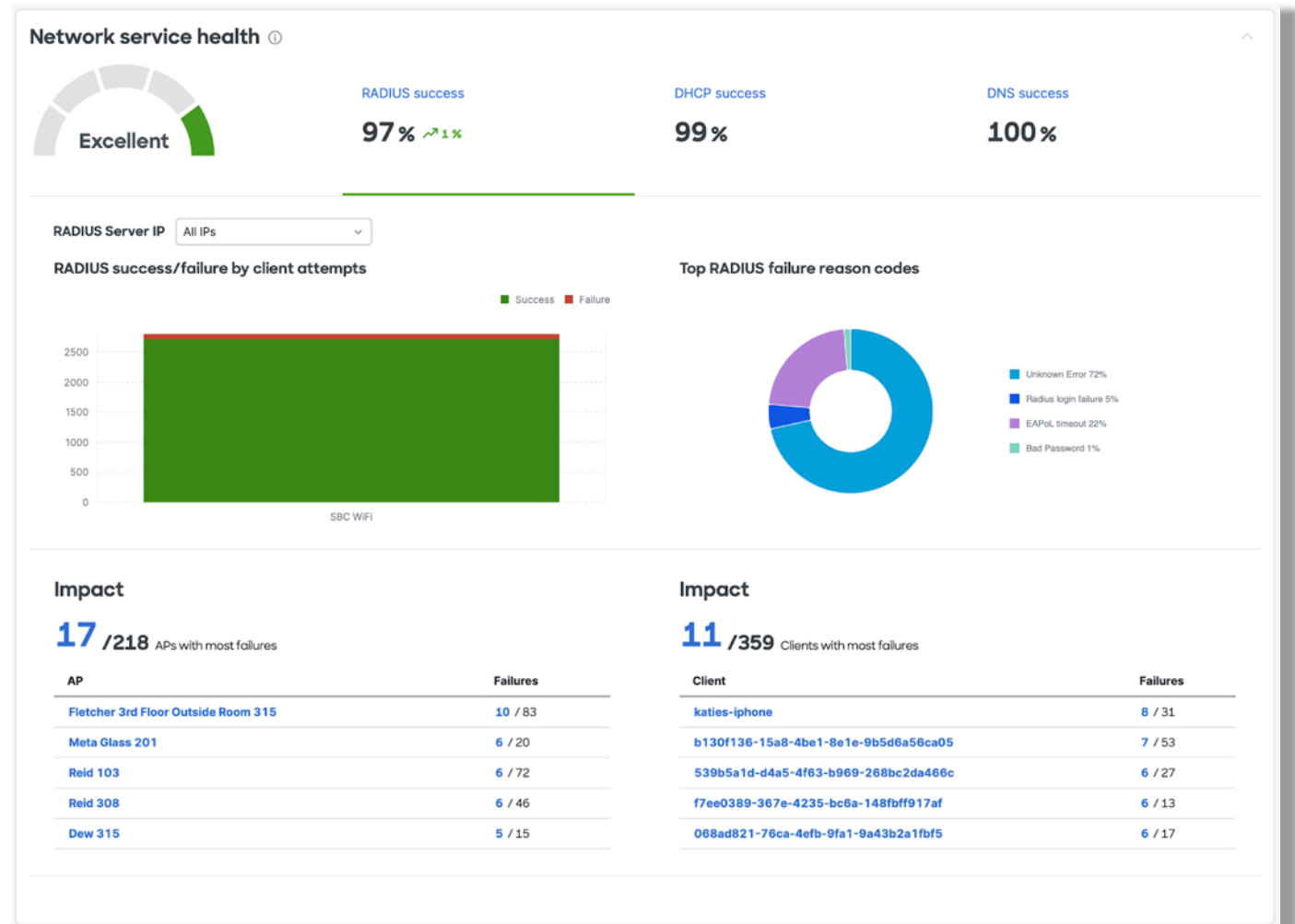
# Network Service Health

Timing: Public Beta

[Announcement](#); [Documentation](#)

Posted: 31 March 2023

- A one-stop-shop overview of your entire wireless network environment
- Comprehensive overview of all Radius, DHCP, and DNS server environments.
- Assess overall performance with ease, and dive deeper into specified client attempts or potential server failure reason codes.
- Available via Early Access



# Wireless Health Overview Page

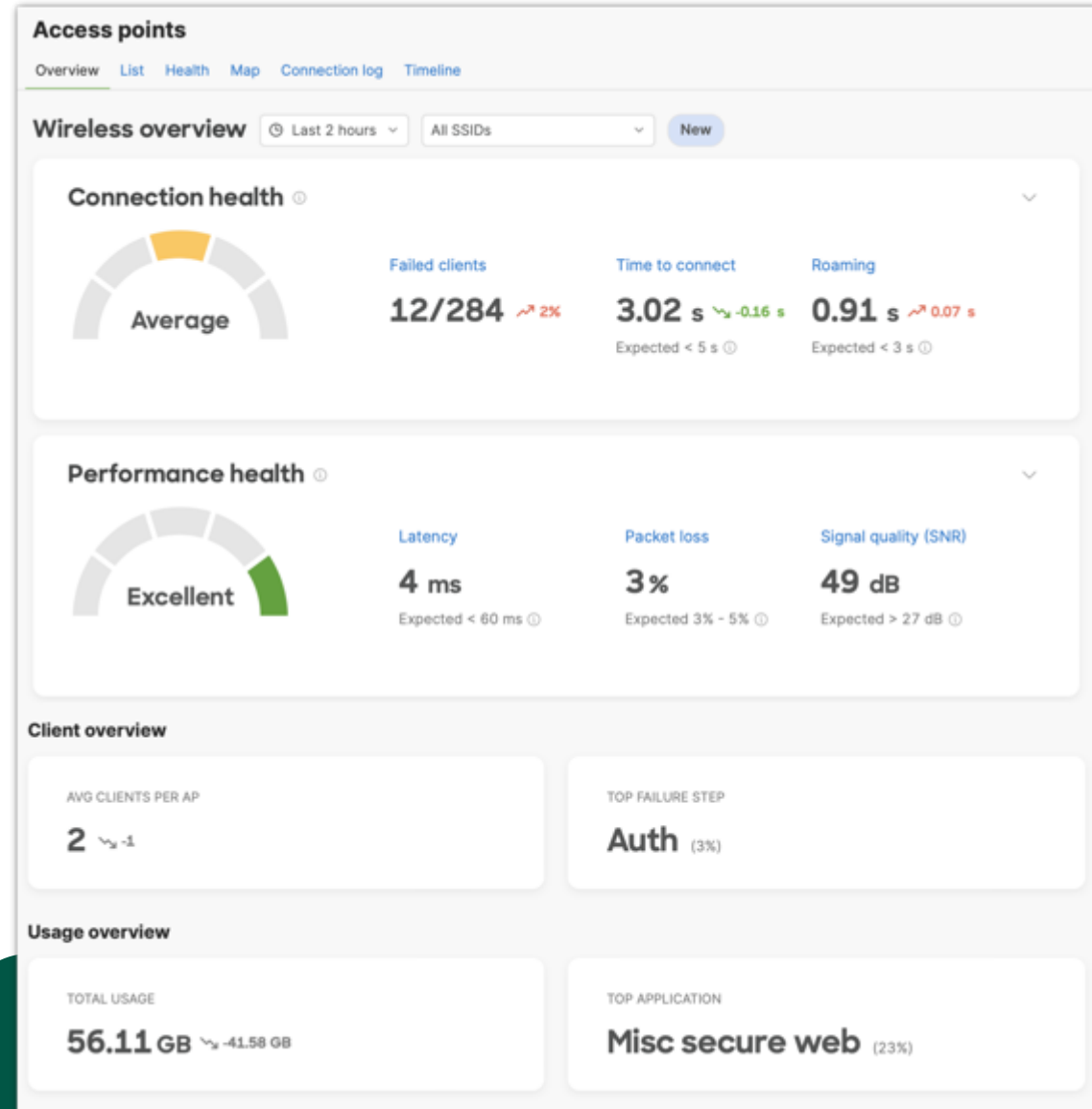
Timing: GA

[Announcement](#); [Documentation](#)

Posted: 7 September 2022

## Highlights

- Provides an aggregate network level view of every wireless client and access point on your network
- Connection and Performance Health Scores provide a quick view of network status
- Single click to drill down into the details within each metric



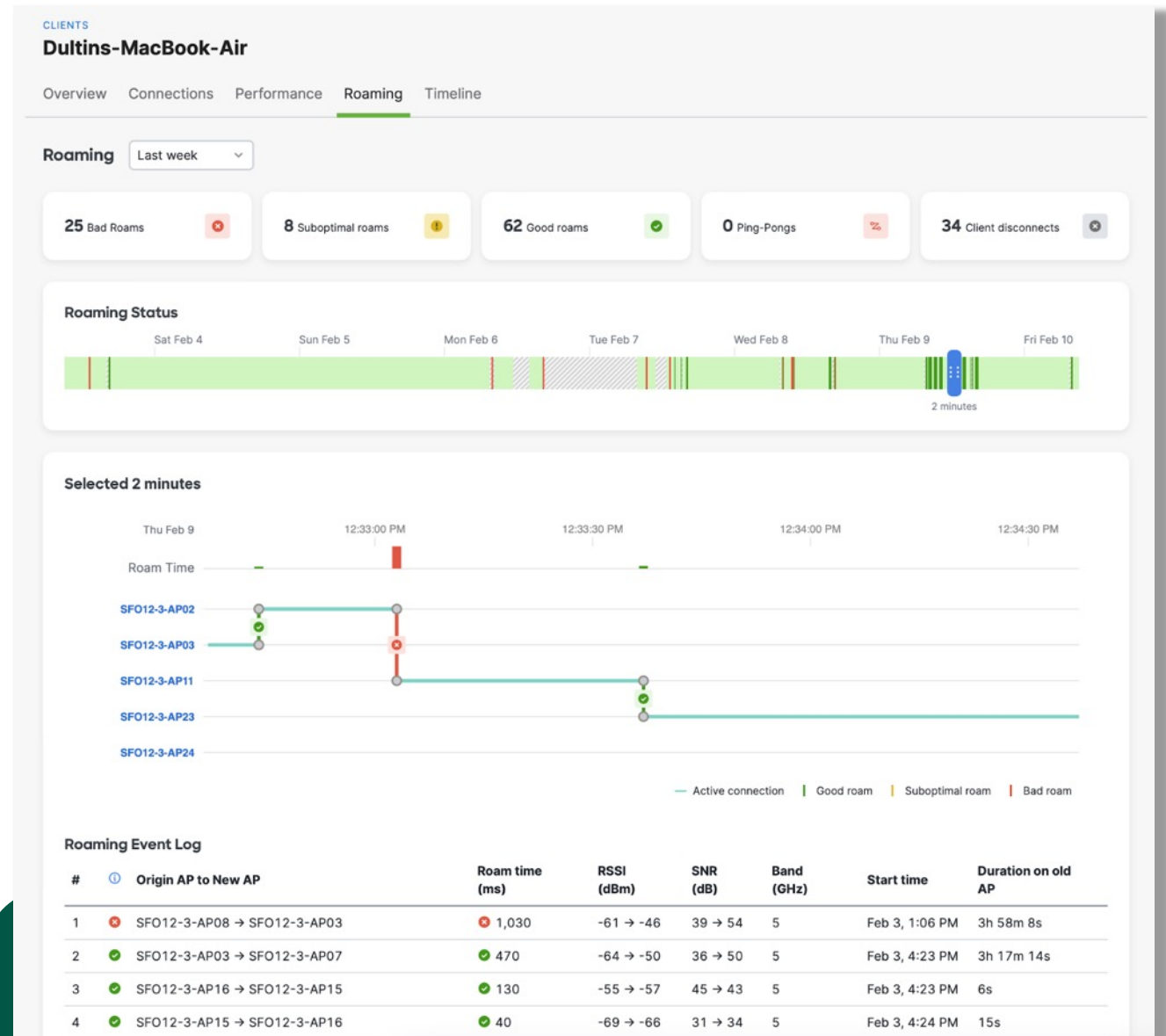
# Client Roaming Analytics

Timing: Public Beta

[Announcement](#); [Documentation](#)

Posted: 31 March 2023

- Turns a static log of network events into an interactive and engaging dashboard view
- A streamlined visualization of roaming behaviour, crucial roaming metrics such as client disconnects and roaming success rate.
- Pinpoint specific time periods or hone in on specific client activity.
- Available via Early Access under clients view



# MT & MV

IoT Sensors and Smart Cameras



# MT15 for CO2 and More

Timing: FCS 17 October 2023

[Ordering Guide](#)

Posted: 13 September 2023

The MT15 promotes visibly healthy environments with a customizable LED indicator

- Easy installation in any indoor space
- Advanced air quality sensor
- Six environmental metrics
- Carbon dioxide monitoring
- Visual indicator

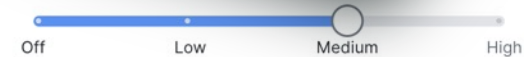
Actionable air quality readings

- Particulate matter 2.5
- Total volatile organic compound
- Carbon dioxide
- Temperature
- Humidity
- Ambient noise



## LED indicator

### Brightness



### Metric assignment

Select which metric the device's LED light will reflect.

- IAQ  CO<sub>2</sub>  TVOC  PM2.5  Temperature  Humidity  Ambient noise

Excellent

Good

Fair

Poor

Inadequate

0-600ppm

600-800ppm

800-1500ppm

1500-1800ppm

≥1800ppm

# Take control of energy use with the MT40

## Smart power controller

Measure energy usage for benchmarking and to identify anomalies.

Remotely power on/off connected devices for troubleshooting, reducing site visits, and manual labor.

Hardware switch included for monitor-only mode.



NEW

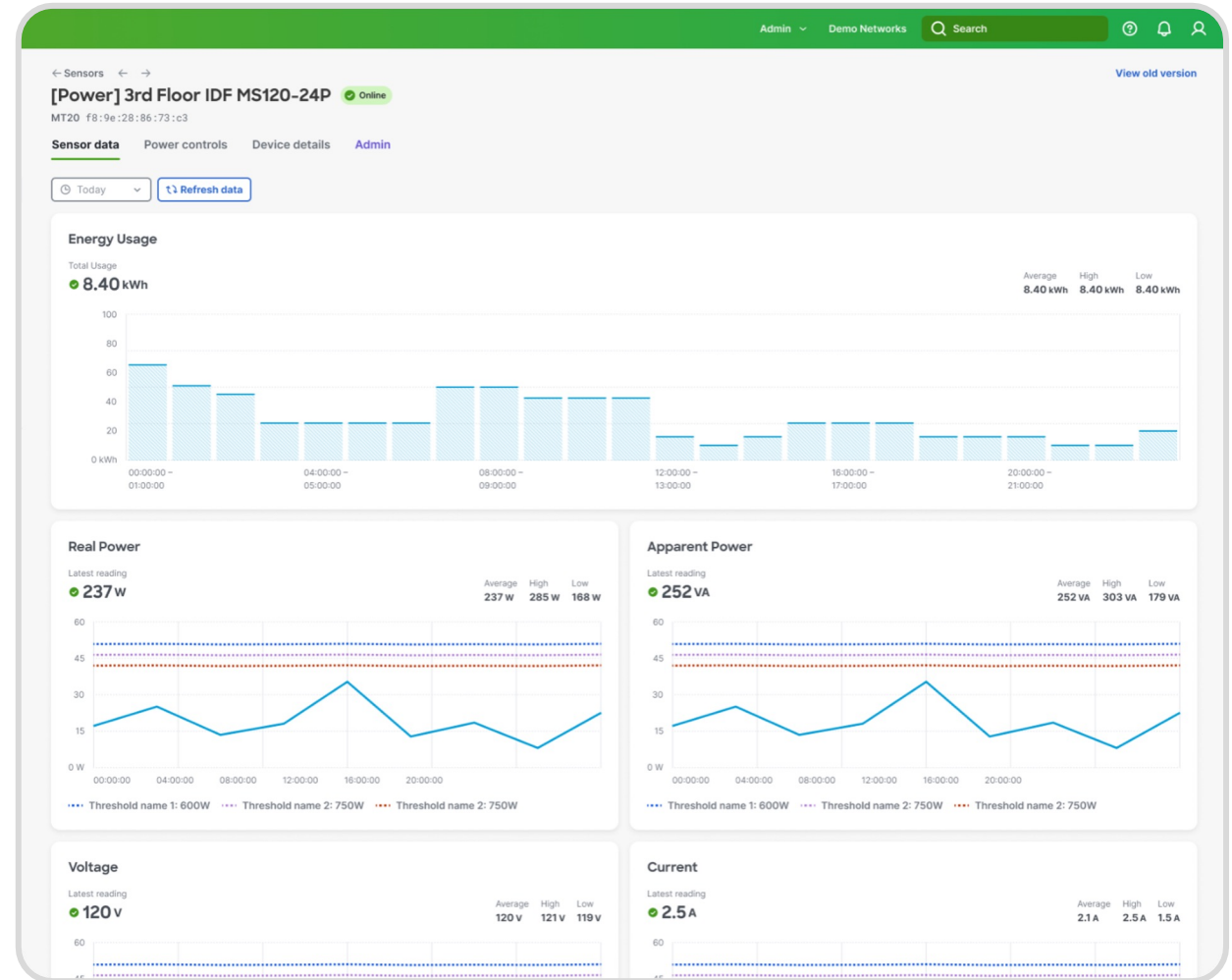


# Monitor energy usage

NEW

## Provides measurements for:

- Voltage
- Current
- Frequency
- Real power
- Apparent power
- Power factor
- Energy usage



# MT14 High Sampling Mode

Now GA

Timing: GA

[Announcement](#); [Documentation](#); [Demo](#)

Posted: 18 Jan. 2023; Updated: 17 Apr.

Fast Sampling mode on MT14 increases the sampling rate for key metrics

- In this mode, the MT14 samples PM2.5 and ambient noise at faster rates, to support vape detection use cases
- PM2.5 samples once every 1 second, and ambient noise samples once every 5 seconds
- TVOC will continue to sample once every 90 seconds
- Temperature, Humidity, and IAQ are then disabled
- MT14 units must be persistently powered
- See Documentation for minimum firmware requirements

Metric	Sampling Rate
Particulate Matter 2.5 (PM2.5)	1 second (USB-C power required)
Ambient Noise	3 second
TVOC	90 second (remains unchanged)
Temperature	Disabled
Humidity	Disabled
IAQ (Composite Score)	Disabled

Dashboard

### MT14 (Indoor Air Quality Sensor) High Sampling Mode

High sampling mode allows your MT14 to sample PM2.5 every 1 second, ambient noise every 5 seconds, and TVOC every 90 seconds.

Temperature and humidity readings will be disabled. Requires persistent power for full functionality. NOTE: This feature requires the MT sensor to be running MT 1.4.1. Please refer to [MT14 High Sampling Mode](#) for more details.

[Get Support](#)

Opt-in settings ^

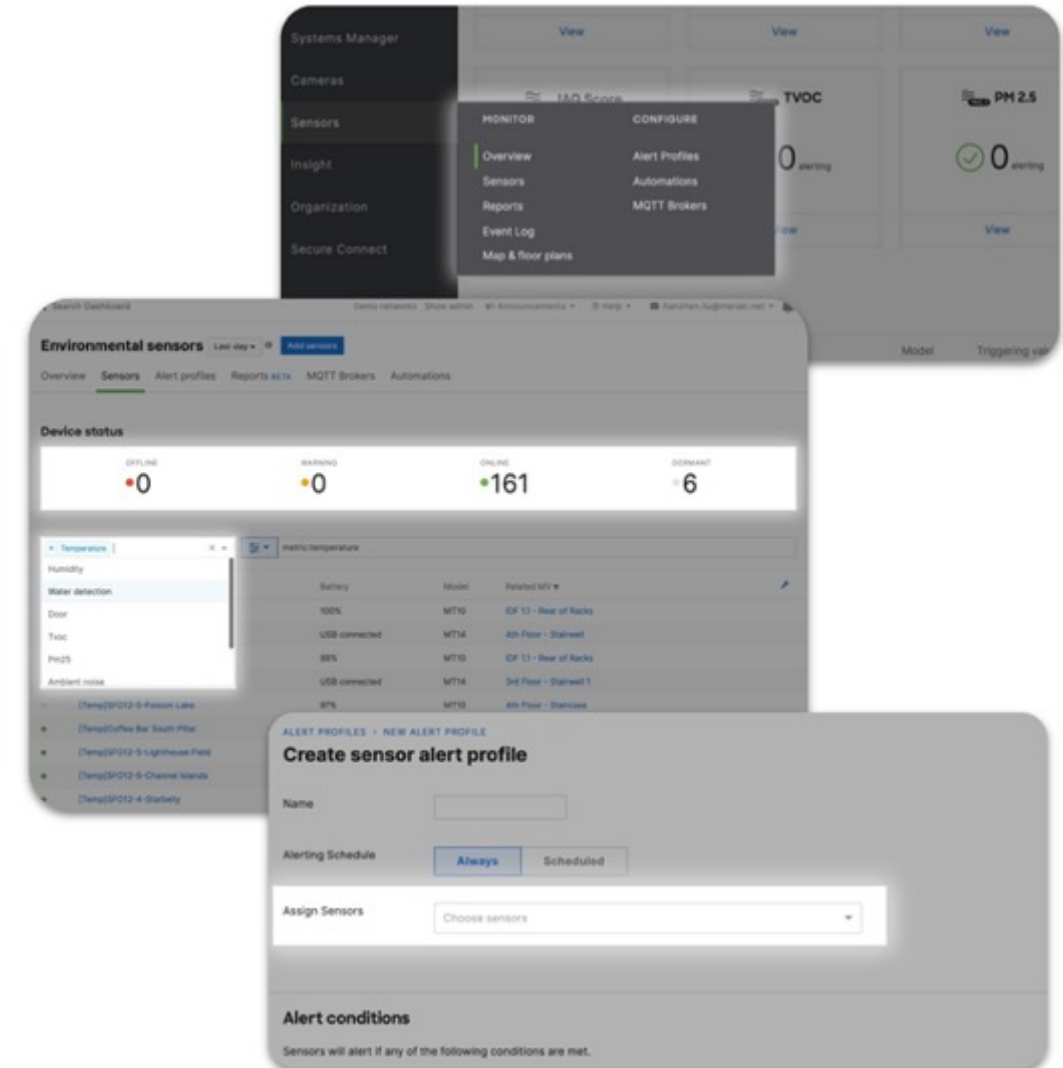
# MT Dashboard Updates

Timing: GA

Posted: 10 August 2022

We've improved the overall software experience for MT, including:

- Improved site navigation by adding more submenus.
- Improve device accessibility by adding quick filter.
- Moved device status to sensor list so information is more consistent.
- Streamlined flow for alert profile assignment.
- Changed “Environmental” to “Sensor” on menu so it’s more obvious to users.



# MT Sensor-Only Admin

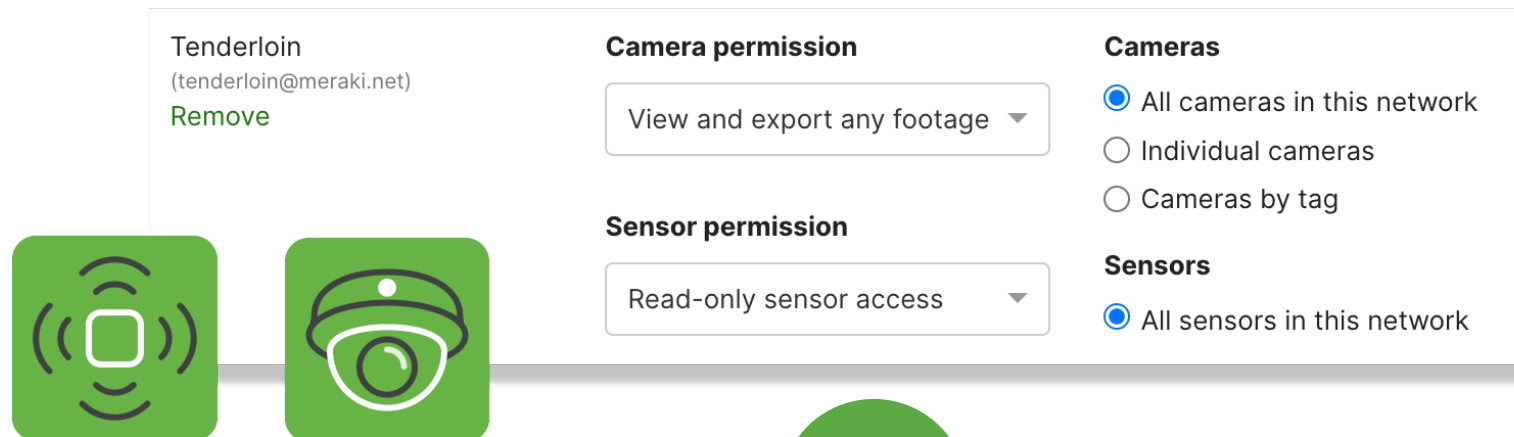
Timing: GA

[Announcement](#)

Posted: 13 September 2023

## Limit users to just the permissions they need

- IoT admin is limited to only camera and sensor features on both the Meraki dashboard and the Meraki enterprise mobile app
- Once created, IoT admins can be found quickly under Organization > Administrators
- You can add sensor access to existing camera-only admins



The screenshot shows the configuration page for a user named 'Tenderloin' (tenderloin@meraki.net). The user's name and email are listed at the top left, with a 'Remove' link. Below this are two green icons: one representing a sensor (a square with concentric circles) and one representing a camera (a stylized eye). To the right of these icons are three configuration sections:

- Camera permission:** A dropdown menu set to 'View and export any footage'.
- Sensor permission:** A dropdown menu set to 'Read-only sensor access'.
- Cameras:** Radio button options for 'All cameras in this network' (selected), 'Individual cameras', and 'Cameras by tag'.
- Sensors:** Radio button options for 'All sensors in this network' (selected).

# Sensors for every space

INFRASTRUCTURE MONITORING			POWER	INDOOR AIR QUALITY		COLD STORAGE	AUTOMATION
MT10 Temperature and humidity	MT12 Water leaks	MT20 Door open/close	MT40 Smart power controller	MT14 Indoor air quality	MT15 Indoor air quality + CO2	MT11 Temperature probe	MT30 Automation button
							



# Polygon Selection Tool

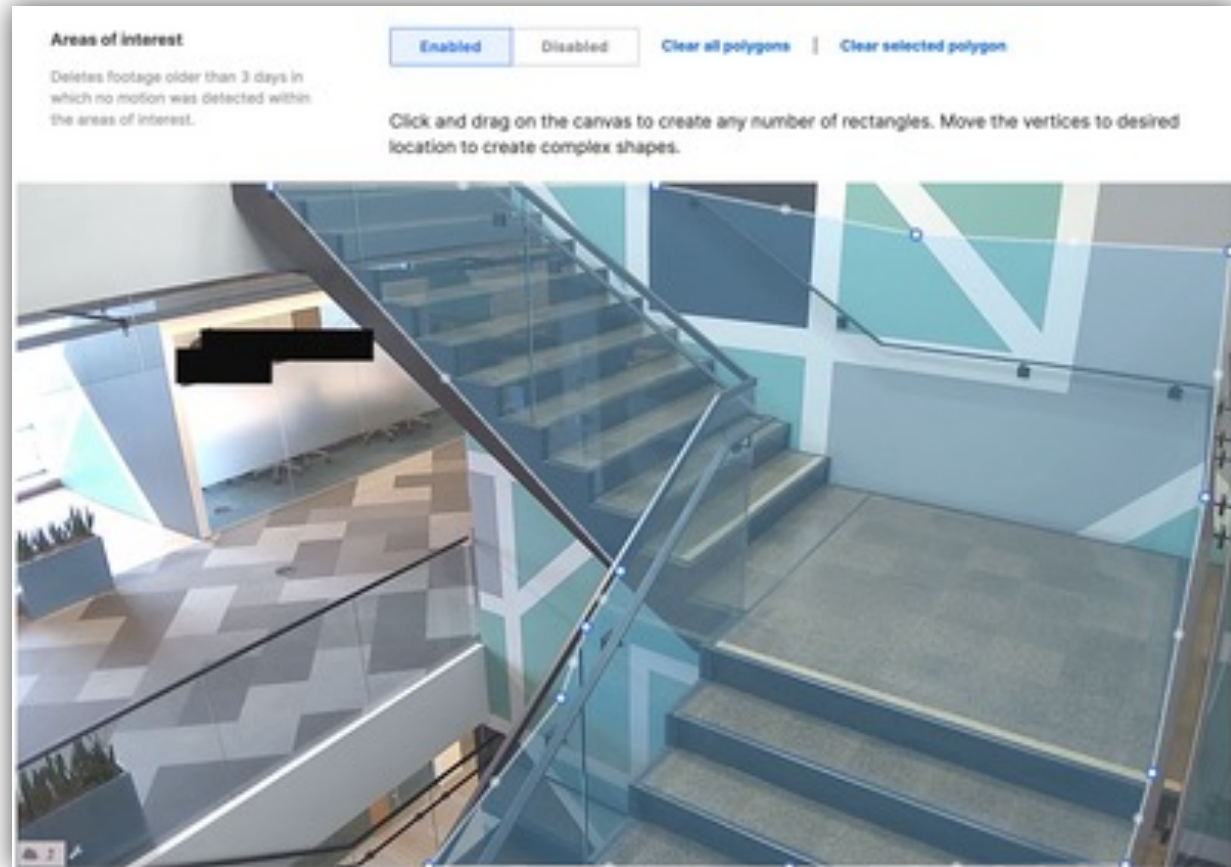
Timing: GA - 23 February 2023

[Documentation](#)

Posted: 23 February 2023

For use in MV motion-based retention

- Select the precise area of a camera view
- Exclude adjacent areas with no motion of interest
- Increase storage duration for important video
- See the [Smart Camera Forum](#) and the [documentation](#)





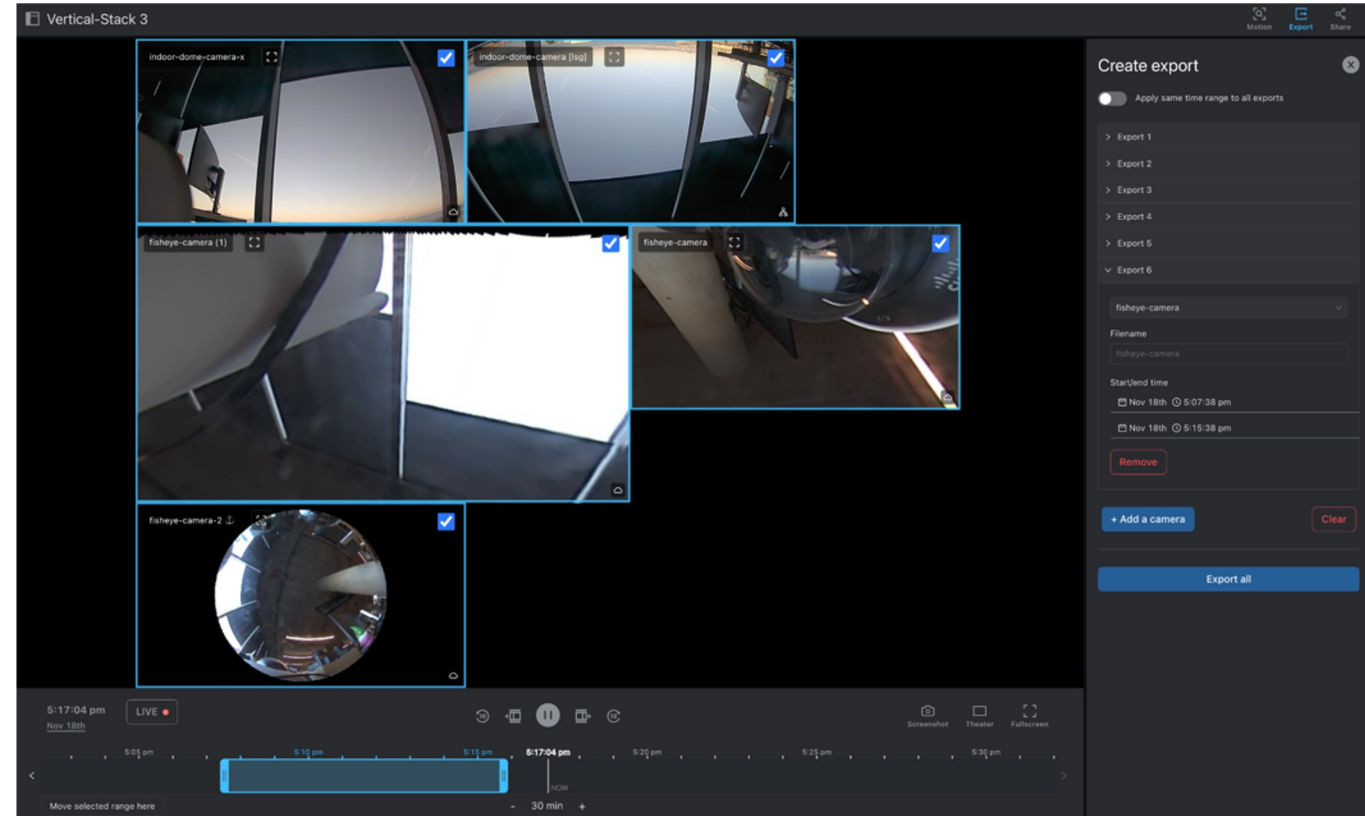
# Vision Portal Updates

Timing: GA

[Announcement](#)

Posted: 1 December 2022





- Export different time ranges from each video wall tile
- Export every dewarped tile from a single fisheye camera








Review the Meraki Vision [change log](#) for more information



# MV camera indoor portfolio

FLEXIBLE, LOW-COST	EASY INSTALLATION	360° FISHEYE	GENERAL PURPOSE
 <p><b>MV2</b> Wide FoV 1080P video No on-camera storage</p>	 <p><b>MV12 series</b> Wide or narrow FoV 1080P video 128-256GB storage</p>	 <p><b>MV32</b> 360° fisheye 8.4MP sensor 256GB storage</p>	 <p><b>MV22 series</b> Varifocal lens Wide to narrow FoV Up to 4MP video 256-512GB storage</p>

# MV camera outdoor portfolio

GENERAL PURPOSE	MORE DETAIL, LONGER STORAGE	LONG-RANGE, HIGH-DETAIL AND MORE STORAGE	HIGH RESOLUTION AND FLEXIBLE STORAGE	PANORAMIC AREA CAPTURE AND MORE STORAGE
 <p><b>MV72</b> 36-112° FoV 1080P video 256GB storage</p>	 <p><b>MV72X</b> 36-112° FoV 4MP video 512GB storage</p>	 <p><b>MV52</b> 12-37° FoV 4K video 1TB storage</p>	<p><b>NEW</b></p>  <p><b>MV63 series</b> Fixed lens (102° FoV) Up to 4K video 256GB-1TB storage</p>	<p><b>NEW</b></p>  <p><b>MV93 series</b> 360° fisheye Up to 12.4MP sensor 256GB-1TB storage</p>

Thank you!