



Power of the Platform

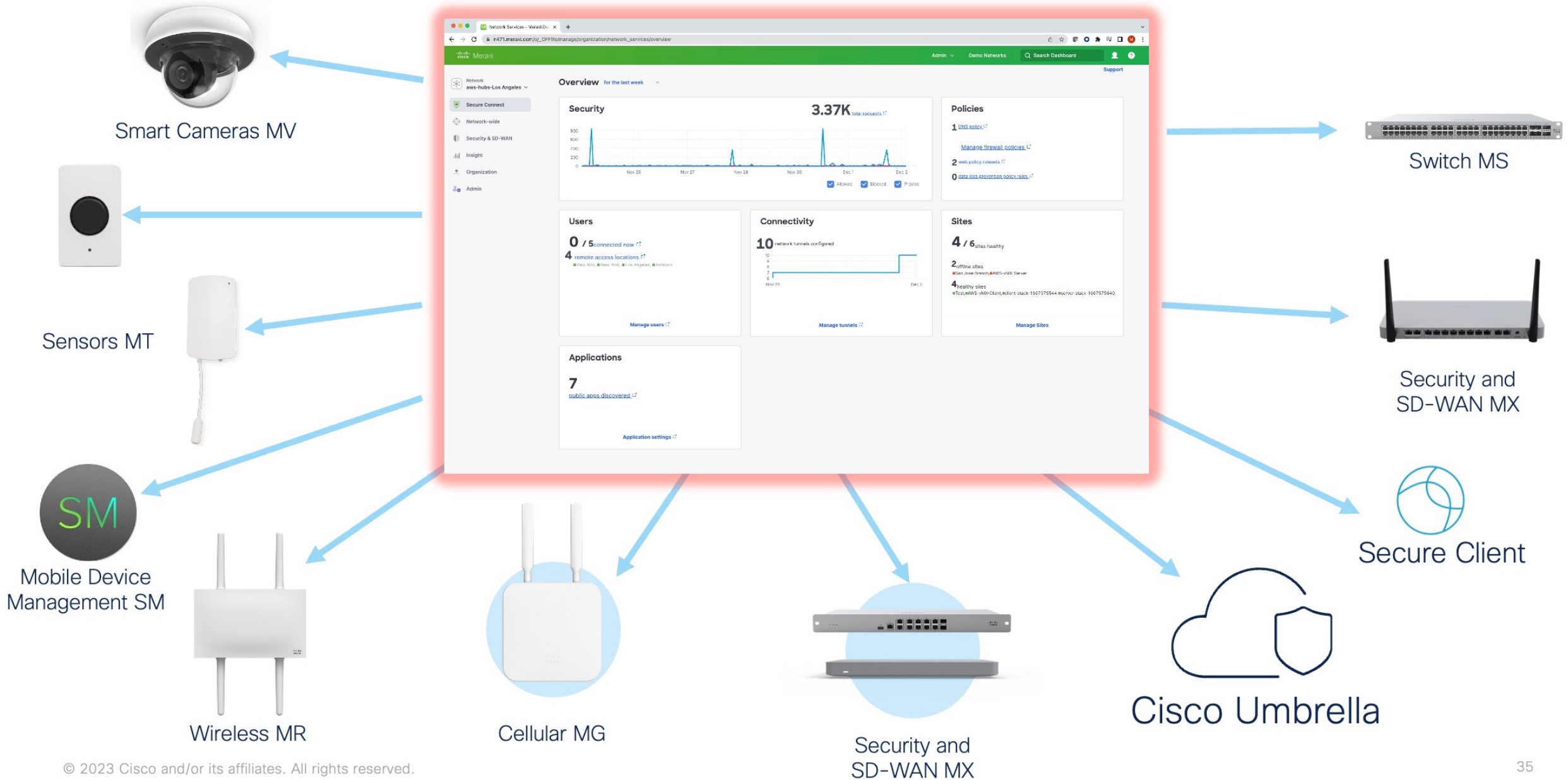
Andrej Jeleník – Solution Engineer
Ondrej Klapka – Sales Specialist

Cisco Tech Club 14.11.2023

Ready, Set, Go! Race to
Success with Power of the
Platform



All Devices and Settings in One Meraki Dashboard



Trusted to simplify experiences everywhere



709K+
Customers



99.99%
Cloud SLA

4+
MILLION

Customer networks

12+
MILLION

Meraki devices online

190+

Countries in network

6+
BILLION

Monthly API Calls

191+
MILLION

Daily end-user devices

250+
MILLION

Daily splash pages served

Born in the cloud, growing daily, and **trusted everywhere**

MX already runs best of SBG security inside



Advanced Malware Protection (AMP)



Secure Threat Services (STS) Snort3



Talos Content Filtering



Secure Malware Analytics



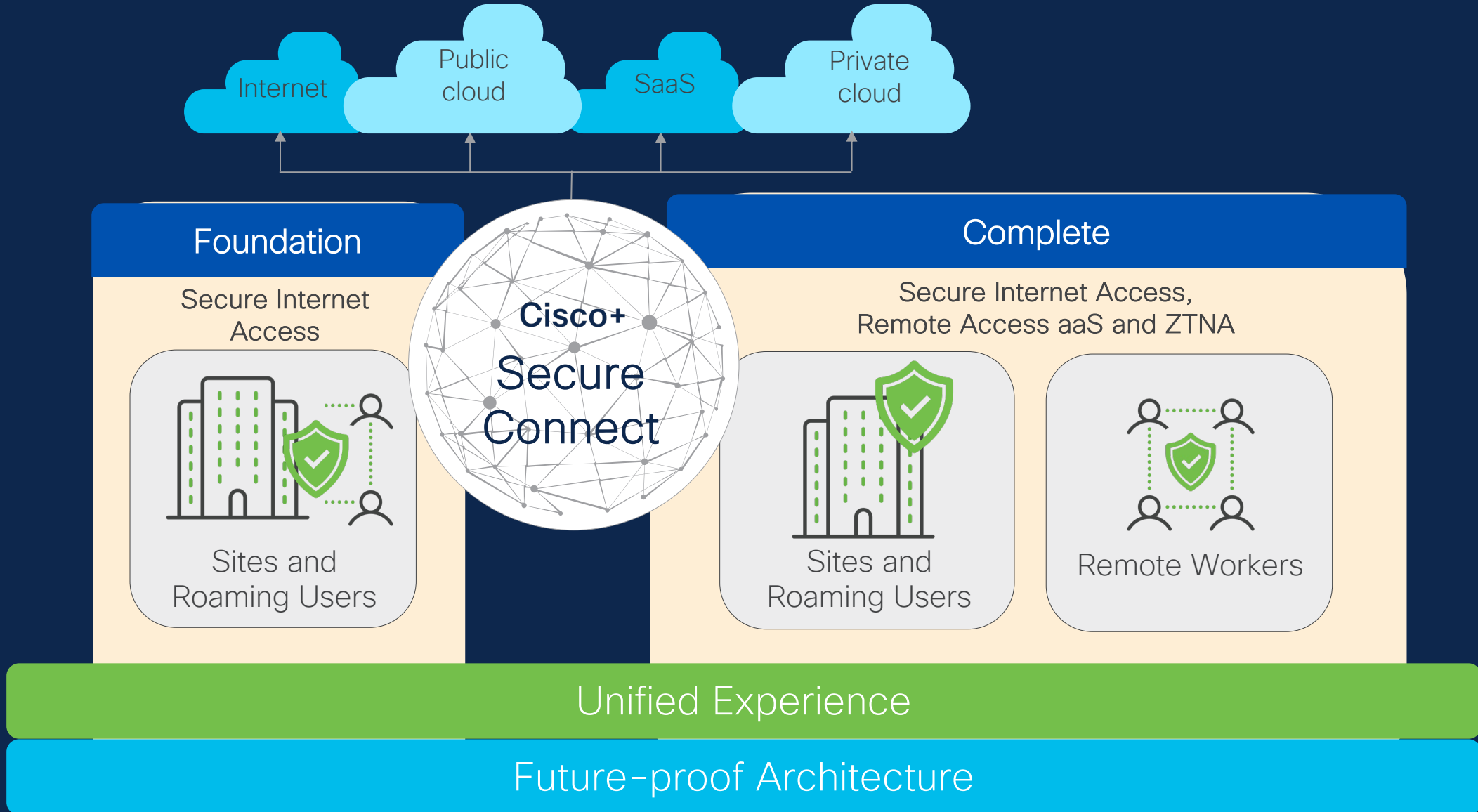
Secure Client



Umbrella & Cisco+ Secure Connect

The Meraki platform is one of Cisco's largest contributors of telemetry feeding Talos Threat Intelligence today

Unified SASE with Cisco+ Secure Connect





Product Announcement



NEW

Introducing MS130

Power more possibilities with next-generation Meraki access switches

Public Announcement
September 26th

Orderability/FCS
September 19th



8 and 8P

1 GbE



8X and 12X

mGig +10G uplinks



24/24P and 48/48P

1 GbE



24X and 48X

mGig + 10G uplinks

Versatile and compact desktop switches

Powerful and full-size rack-mount switches



Boost throughput with cost effective **mGig** options



Connect all your devices with **PoE/PoE+** options



Manage it all in one **unified dashboard**

12-port option: a new addition to the family

MS130-8X



Not enough?
8 ports
(6x 1 GbE + 2x 2.5 GbE)

NEW

MS130-12X



Just right!
12 ports
(8x 1 GbE + 4x 2.5 GbE)

MS130-24X

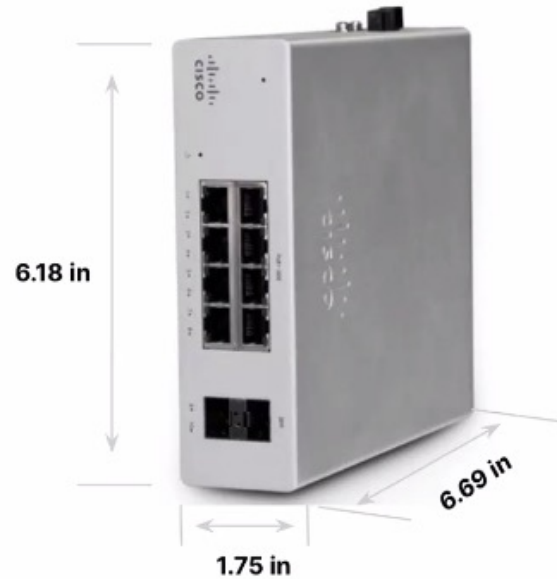


More than enough?
24 ports
(18x 1 GbE + 6x 2.5 GbE)

Extend the network with MS130R

MS130R orderability/FCS
FY24 Q2

Perfect for connecting outdoor access points, cameras, and other IoT devices in hot/cold/tight environments



Extend connectivity and power to wherever you need it
Power more use cases with 30 W PoE+, IP30 protection, and support from $-40\text{ }^{\circ}\text{C}$ to $70\text{ }^{\circ}\text{C}$.



Flexible mounting and power options
Mount via DIN rail, rack, or wall mount with multiple external power supply options.



One dashboard, any environment
Bring the powerful Meraki cloud-native platform to challenging environments.

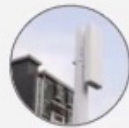
Ideal for:



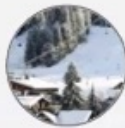
Drive-thru
menu boards



Parking
lots



Outdoor access points
and cameras



Hospitality and
entertainment



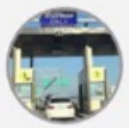
Outdoor
kiosks



Non-temperature
-controlled spaces



Pop-up
locations



Toll
booths

Please note: MS130 mGig (-X) models and MS130R are hardware-ready for the Adaptive Policy feature with a future firmware upgrade and advanced license.



Meraki

© 2023 Cisco and/or its affiliates. All rights reserved. Cisco Confidential

Note: $-40\text{ }^{\circ}\text{C}$ to $70\text{ }^{\circ}\text{C}$ = $-40\text{ }^{\circ}\text{F}$ to $158\text{ }^{\circ}\text{F}$

NEW

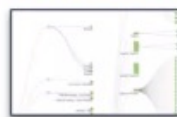
MS130 and MS130R

MS130 orderability/FCS: September 19th
MS130R orderability/FCS: FY24Q2



MS130
indoor switches

Meraki dashboard



Reliable connectivity
and security for all
your environments



MS130R
ruggedized switch



Boost throughput with
cost-effective **mGig** options



Connect all your devices
with **PoE/PoE+** options



Extend your network to
ruggedized environments

Better together

#1 in cloud-managed networks


CISCO
Meraki


CISCO
Catalyst

#1 in networking

 Cloud platform

 Ecosystem

 Wireless

 Switches

Catalyst Meraki 9300 Series Overview

Orderable With Meraki Day-0 Experience

Gigabit

Up to 1 GbE



C9300 24/48 T

- 24/48x 1G copper
- Data only
- 40G/10G/1G fiber modular uplink options

C9300 24/48 P

- 24/48x 1G copper
- 30 W PoE+
- 40G/10G/1G fiber modular uplink options

C9300 24/48 U

- 24/48x 1G copper
- 60 W UPoE
- 40G/10G/1G fiber/10G mGig copper modular uplink options

Multigig

Up to 10 GbE (mGig)



C9300 24 UX

- 24x 10G mGig
- 60 W UPoE
- 40G/10G/1G fiber modular uplink option

C9300 48 UXM

- 36x 2.5G mGig and 12x 10G mGig
- 60 W UPoE
- 40G/10G/1G fiber uplink option

C9300 48 UN

- 48x 5G mGig
- 60 W UPoE
- 40G/10G/1G fiber/10G mGig copper modular uplink option

Fiber aggregation

10/1 GbE SFP+ fiber



C9300 24S/48S

- 24/48 port 1G SFP
- 40G/10G/1G fiber modular uplink options

C9300X 12Y

- 10G/1G (SFP28)
- 100G hardware-based IPsec

C9300X 24Y

- 10G/1G (SFP28)
- 100G hardware-based IPsec

Gigabit and multi-gig SKUs target ship date: FY24 Q2

Fiber SKUs migration public preview is available; -M SKUs are coming in 2H CY24.

Catalyst 9300 modular uplinks



4x 10G/1G SFP



8x 1/10G SFP/SFP+



2x 100G/40G SFP/SFP+



2x 40G QSFP

SFP/direct attach cables

SFP-1GB-SX
SFP-1GB-LX10

SFP-10GB-LR
SFP-10GB-ER
SFP-10GB-SR
SFP-10GB-LRM

QSFP-40G-LR
QSFP-40G-SR4
QSFP-40G-CSR4
QSFP-40G-SR-BD

CBL-TA-1M
CBL-TA-3M



50 cm-1 m-3 m



30 cm-150 cm

StackWise® and StackPower cables

Platinum-rated power supplies



315 W AC



715 W AC/DC



1100 W AC

Modular fan



All relevant Meraki optics are supported on C9300-M models.

Catalyst Meraki 9300 Highlights

Advanced networking without compromising operational efficiency and scalability, from day 0 to day n



Catalyst Meraki C9300

SIMPLE. SCALABLE. FLEXIBLE. SECURE.

Modular uplinks

Hot-swappable uplink modules for flexible hardware upgrades and easier management.

Adaptive policy

Micro-segmentation of users, devices, and applications to simplify security and access policies.

StackPower

Create additional power capacity by pooling sources to power more PoE devices.

Wide range of mGig speeds

PoE on all 24/48-ports along with SFP and mGig and the option to address legacy infrastructure issues.

60 W UPoE density

Power your smart space needs with UPOE and IEEE 802.3bt support.

Improved physical stacking

Up to 480 Gbps to provide more throughput for Wi-Fi 6 and IoT and higher network resilience.

Introducing the MT15

Indoor Air Quality and Carbon Dioxide Sensor

Measures indoor air quality (IAQ), including CO2, temperature, organic compounds, and particulate

Promotes visibly healthy environments with an external LED indicator

Quick, easy, tamper-resistant installation in any indoor space



NEW

List Price \$699

Orderability and FCS: October 17

Introducing the MT40

Smart power controller

Measure energy usage for benchmarking and to identify anomalies.

Remotely power on/off connected devices for troubleshooting, reducing site visits, and manual labor.

Hardware switch for monitor-only mode.



Monitoring air quality

A focus on **health**:

- Overall indoor air quality
- Total volatile organic compounds (TVOCs)
- Particulate matter, 2.5 μ m diameter*
- Potential vape smoke*

A focus on **comfort**:

- Temperature
- Relative humidity
- Ambient noise levels



* Requires direct power via USB-C to operate



Automate tasks

- Improve customer service requests for guests
- Automate service tickets to improve response time
- Disable an SSID in a classroom to keep students focused on instruction
- Send push, SMS, email with custom message



Sensors for every space

CRITICAL INFRASTRUCTURE MONITORING

MT10
Temperature and humidity



MT12
Water leak



MT20
Door open/close



POWER MONITORING

MT40
Smart power controller



COLD STORAGE

MT11
Temperature probe



AIR QUALITY

MT14
Temperature probe



AUTOMATIONS

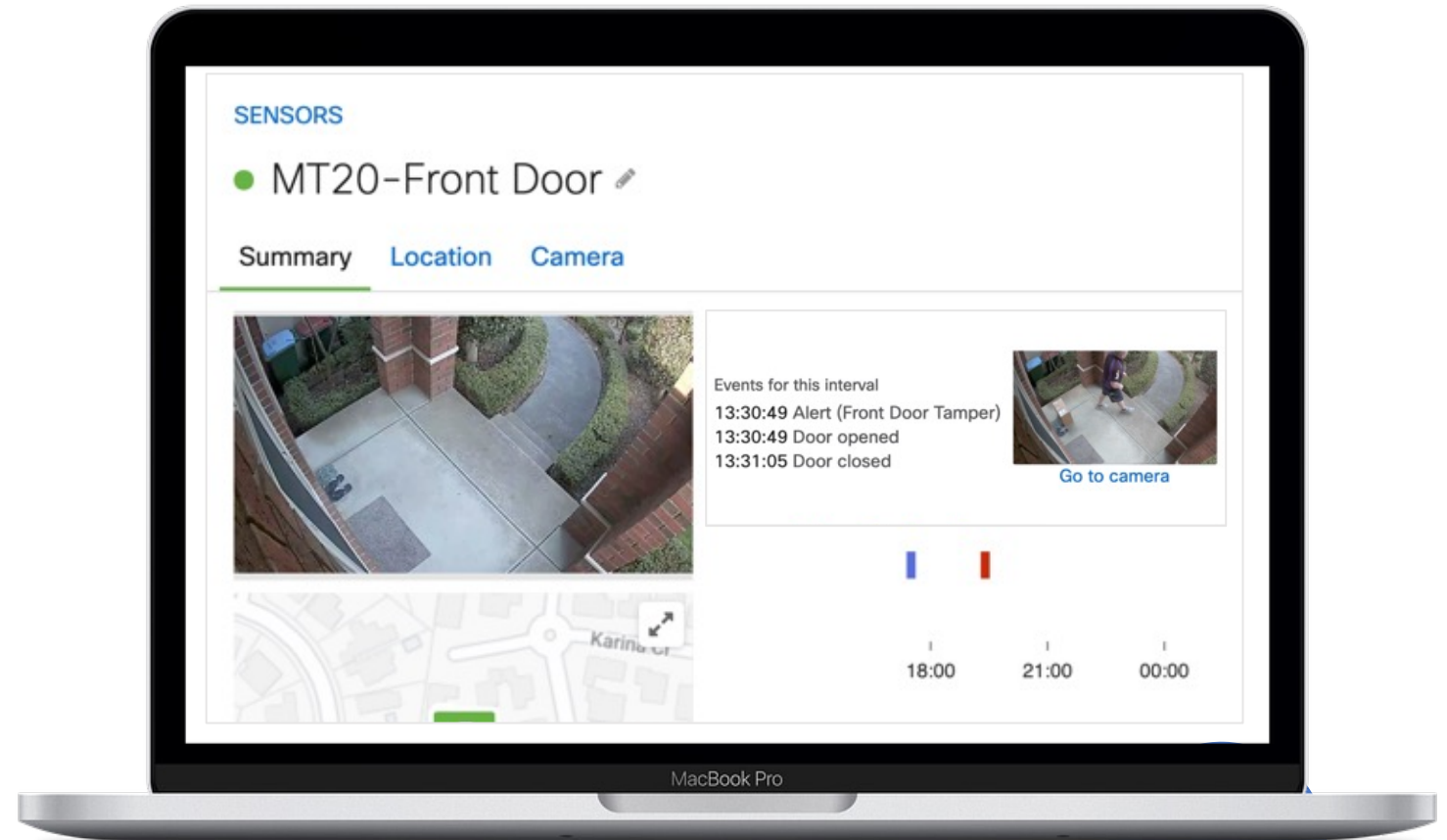
MT30
Automation button



See around every corner

Meraki sensor sight integrates MT and MV to capture every detail

- See events in real time
- Troubleshoot issues faster
- Increase physical security



	MS100	MS200	MS300	MS400
Large	MS120-48 MS125-48	MS210-48 MS225-48 MS250-48	MS350-48 MS355-48 MS390-48	MS410-32 MS425-32 MS450-12
Medium	MS120-24 MS125-24	MS210-24 MS225-24 MS250-24	MS350-24 MS355-24 MS390-24	MS410-16 MS425-16
Small	MS120-8			