



Test Results Summary for Cisco Prime Infrastructure 3.4 for Japan (Release Version 3.4.0.0.348)

First Published: 2018-04-26

Last Modified: 2018-05-15

Americas Headquarters

Cisco Systems, Inc.
170 West Tasman Drive
San Jose, CA 95134-1706
USA
<http://www.cisco.com>
Tel: 408 526-4000
800 553-NETS (6387)
Fax: 408 527-0883



CONTENTS

CHAPTER 1	Overview	1
	Prime Infrastructure test	1

CHAPTER 2	Test Topology and Environment Matrix	7
	Test Topology	7
	Component Matrix	8
	What's New ?	10
	Open Caveats	11
	Resolved Caveats	11

CHAPTER 3	New Features - Test Summary	13
	Support Mobility Express on Maps	13
	Audit Logging for Maps/Wireless	16
	Support for Zero Touch Deployment for ME-AP	17
	Support for better HA Monitoring and Management	19
	SWIM Support of Mobility Express Controllers	20
	CMX 10.4 Support Update	21
	Support on EAP-TLS and EAP-PEAP authentication	22
	Manage ME controllers in Prime	23

CHAPTER 4	Regression Features - Test Summary	27
	Custom Reports	27
	Config Group	35
	Network health	36
	Next Generation Maps	37
	DHCP Server to ME	40

TrustSec SGT/SG ACL 41

MAC filtering capability for lobby ambassadors 42

Scheduled AP Upgrade 43

Domain based URL ACL 45

Autonomous to LWAPP Migration 45

High Availability 46

Flex AVC 47

APIC -EM Controller 49

SWIM 50

HA Enhancement 51

CMX 10.4 Support Update 52

Rolling AP 53

Monitor Mode support in APs (1810/1815) 55

AP Health Extension 57

WLC Health Scoring 59

EoGRE Profile 62

Flex+Bridge mode support for AP's 64

3504 WLC Support 66

Open DNS 67

Support Hyperlocation config enhancement in Lightweight AP template 68

Outdoor AP GPS support 69

Config Wireless 70

CHAPTER 5

Related Documents 73

Related Documentation 73



CHAPTER 1

Overview

- [Prime Infrastructure test](#) , on page 1

Prime Infrastructure test

Cisco Prime Infrastructure test , an integral part of the enterprise wireless solution, is a program that validates various Cisco Wireless Products and Features. This is achieved by testing the latest versions of Cisco wireless products

Cisco Prime Infrastructure for Japan , in turn is an add-on testing at the solution level, where the requirements gathered are specific to Japanese usage and market. The requirements are derived based on the following:

- New features in PI 3.4
- High priority scenarios and basic regression features
- Inputs from Cisco SEs/ TAC

The test execution is carried out on selected Cisco Wireless LAN products, which affect the Japanese segment that are prioritized by Cisco Japan team.

The following products are covered in the test execution:

- Cisco Wireless LAN Controller 8540
- Cisco Wireless LAN Controller 5520
- Cisco Wireless LAN Controller 3504
- Cisco Mobility Express 1850
- Cisco Mobility Express 1830
- Cisco Mobility Express 1815I
- APIC-EM Controller appliance
- Virtual Controller
- Access Point 1700
- Access Point 3700
- Access Point 1530

- Access Point 1600
- Access Point 2700
- Access Point 1570
- Access Point 702
- Access Point 1850
- Access Point 1830
- Access Point 3800
- Access Point 2800
- Access Point 1810
- Access Point 1815I
- Access Point 1815W
- Access Point 1542
- Cisco Prime Infrastructure (Physical-UCS,VM)

Acronyms

Acronym	Description
AAA	Authentication Authorization and Accounting
ACL	Access Control List
ACS	Access Control Server
AKM	Authentication Key Management
AP	Access Point
API	Application Programming Interface
APIC-EM	Application Policy Infrastructure Controller - Enterprise Module
ATF	Air-Time Fairness
AVC	Application Visibility and Control.
BGN	Bridge Group Network
BLE	Bluetooth Low Energy
BYOD	Bring Your Own Device
CA	Central Authentication
CAC	Call Admissions Control
CAPWAP	Control and Provisioning of Wireless Access Point
CCKM	Cisco Centralized Key Management
CCN	Channel Change Notification

Acronym	Description
CCX	Cisco Compatible Extensions
CDP	Cisco Discovery Protocol
CKIP	Cisco Key Integrity Protocol
CMX	Connected Mobile Experience
CVBF	Cisco Vector Beam Forming
CWA	Central Web Authentication
DCA	Dynamic Channel Assignment
DMZ	Demilitarized Zone
DNS	Domain Name System
DTIM	Delivery Traffic Indication Map
DSCP	Differentiated Services Code Point
DTLS	Datagram Transport Layer Security
EAP	Extensible Authentication Protocol
EULA	End User Licence Agreement
FLA	Flex Local Authentication
FLS	Flex Local Switching
FT	Fast Transition
FTP	File Transfer Protocol
FW	Firm Ware
HA	High Availability
H-REAP	Hybrid Remote Edge Access Point
IOS	Internetwork Operating System
ISE	Identity Service Engine
LAG	Link Aggregation
LEAP	Lightweight Extensible Authentication Protocol
LSS	Location Specific Services
LWAPP	Lightweight Access Point Protocol
MAP	Mesh Access Point
MCS	Modulation Coding Scheme
MFP	Management Frame Protection
mDNS	multicast Domain Name System
MIC	Message Integrity Check

Acronym	Description
MSE	Mobility Service Engine
MTU	Maximum Transmission Unit
NAC	Network Admission Control
NAT	Network Address Translation
NBAR	Network Based Application Recognition
NCS	Network Control System
NGWC	Next Generation Wiring closet
NMSP	Network Mobility Services Protocol
OEAP	Office Extended Access Point
PEAP	Protected Extensible Authentication Protocol
PEM	Policy Enforcement Module
PI	Prime Infrastructure
PMF	Protected Management Frame
POI	Point of Interest
PPPoE	Point-to-Point Protocol over Ethernet
PSK	Pre-shared Key
QOS	Quality of service
RADIUS	Remote Authentication Dial-In User Service
RAP	Root Access Point
RP	Redundancy Port
RRM	Radio Resource Management
SDN	Software Defined Networking
SOAP	Simple Object Access Protocol
SFTP	Secure File Transfer Protocol
SNMP	Simple Network Management Protocol
SS	Spatial Stream
SSID	Service Set Identifier
SSO	Single Sign On
SSO	Stateful Switch Over
TACACS	Terminal Access Controller Access Control System
TCP	Transmission Control Protocol
TFTP	Trivial File Transfer Protocol

Acronym	Description
TLS	Transport Layer Security
UDP	User Datagram Protocol
vWLC	Virtual Wireless LAN Controller
VPC	Virtual port channel
VPN	Virtual Private Network
WEP	Wired Equivalent Privacy
WGB	Workgroup Bridge
wIPS	Wireless Intrusion Prevention System
WLAN	Wireless LAN
WLC	Wireless LAN Controller
WPA	Wi-Fi Protected Access
WSM	Wireless Security Module



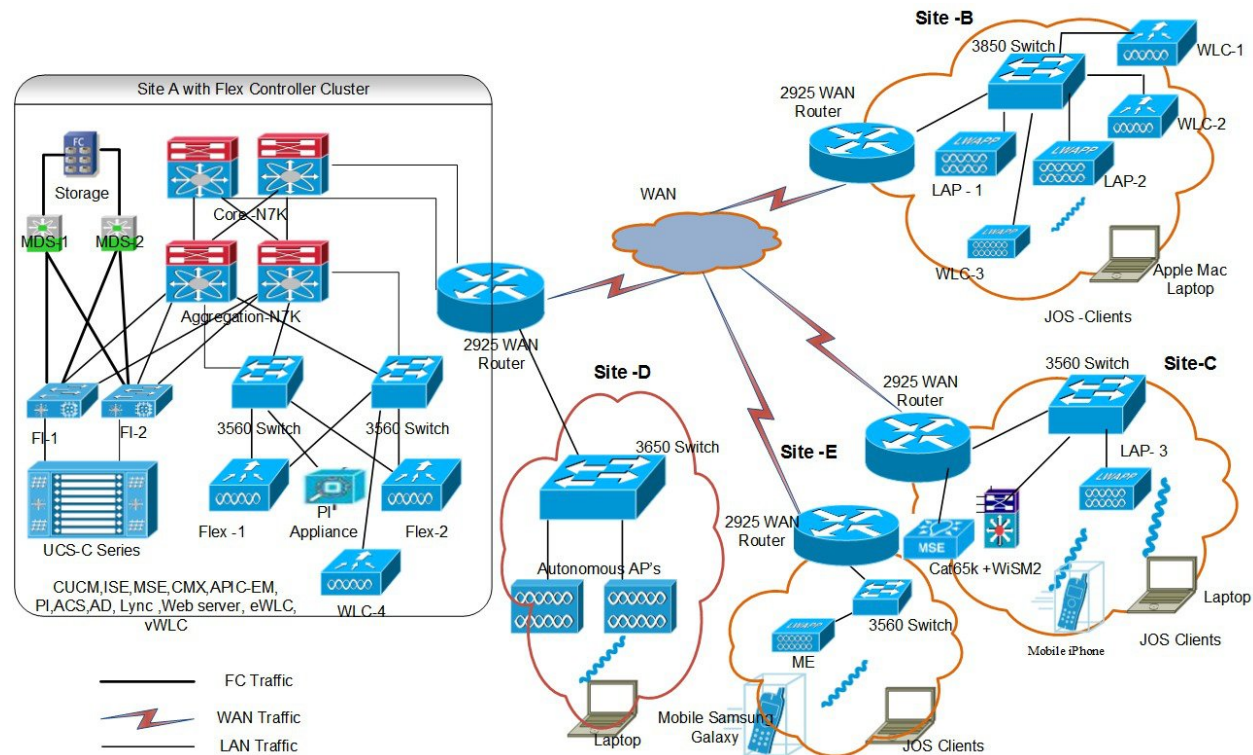
CHAPTER 2

Test Topology and Environment Matrix

- Test Topology, on page 7
- Component Matrix, on page 8
- What's New ?, on page 10
- Open Caveats, on page 11
- Resolved Caveats, on page 11

Test Topology

Figure 1: Topology In Use



Component Matrix

Category	Component	Version
Controller	Wireless LAN Controller 5520	8.7.102.0
	Wireless LAN controller 8540	8.7.102.0
	Wireless LAN Controller 3504	8.7.102.0
	Virtual Controller	8.7.102.0
	APIC-EM Controller appliance	1.6
	CME 1832/1852 /1815I	8.7.102.0
	CME 1562	8.7.102.0
	CME 2800/3800	8.7.102.0
Applications	Prime Infrastructure (Virtual Appliance, UCS based)	3.4.0.0.348
	ISE(VM)	2.4
	Secure ACS(VM)	5.8.1
	CMX(Physical (3365), VM)	10.4.2
	MSE(Physical (3365), VM)	8.0.140.0
	Cisco Jabber for Windows, iPhone	11.8.0
	Cisco Air Provisioning App	1.4
	Cisco Wireless App	1.0.228

Category	Component	Version
Access Point	Cisco AP 3700	15.3
	Cisco AP 3800	15.3
	Cisco AP 2800	15.3
	Cisco AP 2700	15.3
	Cisco AP 1600	15.3
	Cisco AP 1700	15.3
	Cisco AP 1850	15.3
	Cisco AP 1810	15.3
	Cisco AP 1815	15.3
	Cisco AP 1830	15.3
	Cisco AP 7021	15.3
	Cisco AP 1562	15.3
	Cisco AP 1542	15.3
	Cisco AP 1570	15.3
Switch	Cisco 3750V2 switch	15.0(2)SE2
	Cisco Cat 6509-E	15.1(1)SY1
	Cisco Cat 9300	16.8.1
Chipset	5300, 6300 AGN	15.13.0.2
	7265 AC	19.10.0.9
	Airport Extreme	7.7

Category	Component	Version
Client	Operating System(JOS)	Windows 7 Enterprise
		Windows 8 & 8.1 Enterprise
		Windows XP Professional
		Windows 10
	Apple Mac Book Pro, Apple Mac Book Air (JP Locale)	Mac OS 10.13.4
	iPad Pro	iOS 11.3(15E216)
	iPhone 6, 6S & 7 (JP Locale)	iOS 11.3(15E216)
	Samsung Galaxy S4 & S7, Nexus 6P, Sony Xperia XZ	Android 8.0 Oreo
	Wireless IP Phone 8821	11-0-3-221
	End points	Windows 7 Enterprise
		Apple Mac 10.13.4
		Windows 8 & 8.1
		iPhone 6,6S & 7
		Windows 10
Samsung Galaxy S4, S7, Nexus 6P		
Cisco AnyConnect VPN Client	4.5.05030	
Module	Hyper location Module	NA
Active Directory	AD	Windows 2008R2 Enterprise
Call Control	Cisco Unified Communications Manager	10.5.1-10000-7/10.5.1.1000-1(JP)
Browsers	IE	11.0.11
	Mozilla Firefox	59.0
	Safari	11.0.2
	Chrome	63

What's New ?

- Support Mobility Express on Maps
- Audit Logging for Maps/Wireless
- Support for Zero Touch Deployment for ME-AP
- Support for better HA Monitoring and Management
- SWIM Support of Mobility Express Controllers
- CMX 10.4 Support Update

- Support on EAP-TLS and EAP-PEAP authentication
- Manage ME controllers in Prime

Open Caveats

Defect Id	Titel
CSCvh80866	Help Page is not redirecting under AVC profile
CSCvi62439	Software image not importing using ftp protocol in Japanese browser
CSCvi69977	Not able to enable the the scheduled saved report after disabling it in PI
CSCvi72392	404 error shown for "Forgot your user ID/password" link under Historic page in PI
CSCvi88345	Network health page not loading after continuous refresh
CSCvi23573	Partial collection failure for Mobility Express - DHCP Scope
CSCvj03970	AP dot1x credential cannot be configured even after disabling password policy in PI
CSCvj08799	AP Onboarding Profile not able to add in PI
CSCvi70082	Controlled APs count increases in Pop over of ME controller in MAPS
CSCvi70329	Java.null error shown while providing special characters in Azimuth angle
CSCvi88395	While positioning the AP it has no validation when given with invalid values in PI Maps
CSCvi92735	Exporting the site map is not triggering audit log in PI

Resolved Caveats

Defect Id	Titel
CSCvh74957	Unable to add interfaces for Routers/Switches in PI while logged in via Japanese/Korean GUI
CSCvh80827	APIC EM Module is inactive and not redirecting
CSCvh80853	AVC capable devices (image) is not applying quick filter in Japanese GUI
CSCvh80870	Wireless health page in Health rule is not loading properly
CSCvh80872	WAN and SP Health Trend tab not loading under PfR monitoring page in PI
CSCvh80881	By default "other category" cannot be created under crate Application
CSCvh80888	Advanced Filter Option is not working in PI Japanese UI
CSCvh86340	On the web, with Japanese login, one cannot see Software Image Management's job result
CSCvh92709	Unable to Add Members in Mobility Services>Mobility Domains in Japanese PI UI



CHAPTER 3

New Features - Test Summary

- [Support Mobility Express on Maps, on page 13](#)
- [Audit Logging for Maps/Wireless, on page 16](#)
- [Support for Zero Touch Deployment for ME-AP, on page 17](#)
- [Support for better HA Monitoring and Management, on page 19](#)
- [SWIM Support of Mobility Express Controllers, on page 20](#)
- [CMX 10.4 Support Update, on page 21](#)
- [Support on EAP-TLS and EAP-PEAP authentication, on page 22](#)
- [Manage ME controllers in Prime , on page 23](#)

Support Mobility Express on Maps

Logical ID	Title	Description	Status	Defect Id
WLJPI34S_MEmaps_01	Adding ME controller to PI	To add the ME controller to the PI and verify if the controller gets added to PI without any errors.	Passed	
WLJPI34S_MEmaps_02	Adding a ME controller to the MAPS	To check if the ME controller gets added to the floor MAP	Passed	
WLJPI34S_MEmaps_03	Adding ME controllers with it neighbours and check the Rx neighbour functionality .	To add the ME master controller to the maps with its slave AP and verify if the controller and other AP added to maps and check the Rx neighbour functionality..	Failed	CSCvi70082

WLJPB4S_MEmaps_04	Adding a ME controller with one neighbour AP in sensor mode.	To add a ME controller AP with one neighbour AP in sensor and check the details of the neighbour AP .	Passed	
WLJPB4S_MEmaps_05	Checking the details of the ME controller placed on the floor	To check the details of the ME controller placed on the floor and compare the details and check if the details are same or not.	Passed	
WLJPB4S_MEmaps_06	Positioning the ME AP in the floor of the building	To position ME AP in the building floors and check if the AP is positioned properly.	Passed	CSCvi88395
WLJPB4S_MEmaps_07	Changing the azimuthal angle and elevation for the ME AP.	To change the azimuth angle and elevation of the ME AP and check if the azimuthal angle and elevation of the AP is changed or not.	Failed	CSCvi70329
WLJPB4S_MEmaps_08	Deleting ME controller AP from the floor of the building .	To delete the ME controller AP from the floor of the building and check if the AP gets deleted from it or not	Passed	
WLJPB4S_MEmaps_09	Check if the ME controller AP when searched in Serach on Map is shown .	To check if the ME controller AP when searched in Serach on Map is shown or not.	Passed	
WLJPB4S_MEmaps_10	Export a Map added with ME controller and import the same file and check the details.	To export the Map added with ME controller and import the same file and check if the details are same.	Passed	

WLJP34S_MEmaps_11	Export a Map added with ME controller and import the same file to CMX .	To export a Map with ME controller and import the same file to CMX and check if the file gets imported with the same	Passed	
WLJP34S_MEmaps_12	Connecting a JOS window client to the ME controller in the floor map.	To connect a JOS window client to ME controller added to the floor and check if the client gets connected and the client details are shown or not.	Passed	
WLJP34S_MEmaps_13	Moving the ME Controller AP from One floor to the other and check if the client moves from one floor to other.	To move the ME controller AP from one floor to the other and check if the clients move from one floor to other and verify the client detail.	Passed	
WLJP34S_MEmaps_14	Check the data in top client count in Particular AP in the chart and verifying it.	To verify the data in top client count in particular AP in the chart and verify the details in the chart.	Passed	
WLJP34S_MEmaps_15	Check the data in top AP by interference in the chart and verifying it.	To verify the data in top AP by interference in the chart and verify the details in the chart.	Passed	
WLJP34S_MEmaps_16	Creating a report for the Building which contains ME controller	To Create a scheduled report for the building which has the ME controller AP and check if the report is generated or not.	Passed	
WLJP34S_MEmaps_17	Changing the parametres of the ME AP for Alarm checking.	To change the parameters of the ME AP and check if the alarm is triggered for changing corresponding parameter .	Passed	

Audit Logging for Maps/Wireless

Logical ID	Title	Description	Status	Defect Id
WLJPI34S_Logging_01	Creating a site under wireless Map and check Audit dashboard.	To create a site in wireless maps and check if there is a log in the Audit dashboard or not.	Passed	
WLJPI34S_Logging_02	Creating a building under wireless Map	To create a building in wireless maps and check if there is a log in the Audit dashboard or not.	Passed	
WLJPI34S_Logging_03	Creating a floor in a site Map	To create a floor in a site map and check if the Audit dashboard shows the log for the floor created in the site maps	Passed	
WLJPI34S_Logging_04	Importing a Map file to PI	To import a Map file to PI and check if the valid log is generated in Audit Dashboard	Failed	CSCvi92735
WLJPI34S_Logging_05	Deleting a site under wireless Map and check Audit dashboard.	To delete a site under wireless map and check if the audit dashboard generated log for the deleted site	Passed	
WLJPI34S_Logging_06	Deleting a building under wireless Map	To delete a building in wireless map and check if the log is captured in audit dashboard or not.	Passed	
WLJPI34S_Logging_07	Delete a floor in a site Map	To delete a floor in a map and verify if the log is generated in audit dashboard or not.	Passed	

WLJPI34S_Logging_08	Changing the parameters in the site of the map	To change the parameters in the site created in the maps and verify if the logs created in the audit dashboard.	Passed	
WLJPI34S_Logging_09	Editing the building created in the maps	To edit the parameters of the building created in the maps and check if there is a log generated in the Audit dashboard	Passed	
WLJPI34S_Logging_10	Editing the Floor created in the maps	To edit the parameters of the floor created in the maps and check if there is a log generated in the Audit dashboard	Passed	
WLJPI34S_Logging_11	Adding a AP to floor of the wireless map	To add a AP to the floor of the map and check if there is a log for that in the change audit dashboard .	Passed	
WLJPI34S_Logging_12	Deleting a AP from the floor of the wireless map	To delete the AP from the floor of the map and to verify if a log is generated of that in audit dashboard.	Passed	

Support for Zero Touch Deployment for ME-AP

Logical ID	Title	Description	Status	Defect Id
WLJPI34S_ZTD_01	Joining 3800/1700 AP's in ME and adding it in PI	To check whether 3802/1702 AP's is joined in ME and added successfully in PI	Passed	

WLJPI34S_ZTD_02	Creating an AP Template and configuring the AP Parameters	To check whether AP Template is created with configured AP Parameters successfully	Passed	
WLJPI34S_ZTD_03	Creating an AP Template and configuring 802.11a/n/ac Parameters	To check whether AP Template is created with configured 802.11a/n/ac Parameters successfully	Passed	
WLJPI34S_ZTD_04	Creating an AP Template and configuring 802.11b/g/n Parameters	To check whether AP Template is created with configured 802.11b/g/n Parameters	Passed	
WLJPI34S_ZTD_05	Creating an AP Template and configuring flexconnect Parameters	To check whether AP Template is created with configured flexconnect Parameters	Passed	
WLJPI34S_ZTD_06	Creating a AP profile in AP Onboarding by pushing AP Details through Ethernet MAC Address/Serial Number and AP name	To check whether AP profile is created successfully with AP name and MAC Address	Passed	
WLJPI34S_ZTD_07	Creating a AP profile in AP Onboarding and pushing it to ME Controller	To check whether AP profile is created and pushed to ME Controller successfully	Passed	
WLJPI34S_ZTD_08	Creating a AP profile in AP Onboarding by pushing AP Details through CSV file	To check whether AP profile is created through CSV file	Passed	
WLJPI34S_ZTD_09	Creating a AP profile in Disabled mode and pushing it to ME Controller	To Check whether AP profile is not deployed in ME controller	Passed	

WLJPI34S_ZTD_10	Verifying AP onboarding Template configuration in AP console	To verify whether AP onboarding Template configuration is AP console	Passed	
-----------------	--	--	--------	--

Support for better HA Monitoring and Management

Logical ID	Title	Description	Status	Defect Id
WLJPI34_BetterHA_01	Configuring HA pair up- WLC 5520 /8540 by using the cli command	To verify whether the HA pair(ACTIVESTANDBY) is up successfully by using the cli command	Passed	
WLJPI34_BetterHA_02	Controller HA pair with different hardware models (3504 and 8540)	To verify the role negotiation between the controllers with different hardware models	Passed	
WLJPI34_BetterHA_03	Verifying the serial number of the standby controller	To check whether the serial number of the standby controller is getting or not	Passed	
WLJPI34_BetterHA_04	Verifying the FAN status of the standby controller	To verify whether the FAN status of the standby controller is getting or not	Passed	
WLJPI34_BetterHA_05	Setting the FAN status of the standby controller to full/low speed and read the FAN status	To check whether full/low speed FAN status of the standby controller is getting or not	Passed	
WLJPI34_BetterHA_06	Configuring controller HA pair with different software versions	To verify whether controllers HA pair with different software versions	Passed	
WLJPI34_BetterHA_07	Checking the controller mode when the redundancy port loses connectivity	To verify the HA pair controller mode after disconnecting the redundancy port	Passed	

WLJPI34_BetterHA_08	Checking the controller modes(HA pair) after power failure	To verify the controller modes after power failure on both the controllers	Passed	
WLJPI34_BetterHA_09	Checking the HA mode after resetting the peer system from active controller	To verify the HA mode after resetting the peer system from active controller	Passed	
WLJPI34_BetterHA_10	Checking the JOS client status during AP SSO after active failover-L2 Authentication	To verify whether the client gets disassociated and forced to re-join to the controller after AP SSO	Passed	

SWIM Support of Mobility Express Controllers

Logical ID	Title	Description	Status	Defect Id
WLJPI34_SWIM_ME_01	Importing a ME image through a file.	To Import a ME image as a file and check if the file gets imported or not	Passed	
WLJPI34_SWIM_ME_02	Importing a ME image from a device	To import a ME image from a device and check if the ME images gets imported from the device or not	Passed	
WLJPI34_SWIM_ME_03	Importing the ME image through cisco.com using Credentials	To Import a ME image from cisco.com by giving the cisco credentials and check if the ME image gets imported or not	Passed	
WLJPI34_SWIM_ME_04	Importing the ME image through the URL	To import the ME image using URL and check if the ME images gets imported or not.	Passed	

WLJPB4S_SWIM_ME_05	Changing the ME image transfer protocol order .	To change the ME image transfer protocol order and check if the order is changed or not	Passed	
WLJPB4S_SWIM_ME_06	Importing a ME image through a protocol.	To import a ME image from a device and check if the images gets imported from the device or not	Passed	
WLJPB4S_SWIM_ME_07	Checking the ME image imported through the Software image Summary	To Check if the ME image imported is shown in the software image summary or not	Passed	
WLJPB4S_SWIM_ME_08	ME image is distributed with all the different devices .	To check whether the ME image is distributed among the different devices selected	Passed	

CMX 10.4 Support Update

Logical ID	Title	Description	Status	Defect Id
WLJPI34S_CMX_01	Importing maps from prime infrastructure	To import maps from prime infrastructure and check if the maps gets imported to the cmx .	Passed	
WLJPI34S_CMX_02	Importing the maps with 2 to 3 Access points from PI to CMX	To import the maps from prime infra to CMX with 2 to 3 access point and check if the access point details are shown correctly including clients connected .	Passed	

WLJPI34S_CMX_03	Connecting the client to the access point on the floor and check if the details of the client.	To connect a client to the access point on the floor and check if the details of the clients are shown correctly or not.	Passed	
WLJPI34S_CMX_04	Connecting many clients from different place and check the location of the clients	To connect many client from different place to the access points and check if the location of the client are shown in CMX	Passed	
WLJPI34S_CMX_05	Searching the client by MAC address in CMX heat map	To check whether client device can be searched by specifying its MAC address or not	Passed	
WLJPI34S_CMX_06	Searching the client using its IP address in CMX heat map	To check whether client device can be searched by specifying its IP address or not	Passed	
WLJPI34S_CMX_07	Searching client using its SSID in CMX heat map	To verify whether client device can be searched by specifying the SSID or not	Passed	
WLJPI34S_CMX_08	Check the number of clients visting the building and floor in hourly basic and daily basic	To check the the number of client visiting the building or floor on hourly and daily basic	Passed	
WLJPI34S_CMX_09	Checking the number of new and repeat visitors to the building or floor.	To check the number of new and repeat clients to the building or floor .	Passed	

Support on EAP-TLS and EAP-PEAP authentication

Logical ID	Title	Description	Status	Defect Id
------------	-------	-------------	--------	-----------

WLJPI34S_dot1x_01	Enabling dot1x auth for AP from PI to ME and joining AP to ME WLC	To check whether AP joins ME or not after dot1x authentication from Switch/ISE which is configured from PI	Passed	
WLJPI34S_dot1x_02	Associating clients to AP joined via Dot1x authentication	To check whether clients associated successfully or not once AP joined via dot1x authentication from Switch/ISE	Passed	
WLJPI34S_dot1x_03	Joining COS AP to ME through Dot1x+PEAP authentication	To check whether COS AP joins ME or not after dot1x authentication from Switch/ISE via EAP method PEAP	Passed	
WLJPI34S_dot1x_04	Joining iOS AP to ME through Dot1x+EAP TLS authentication	To check whether iOS AP joins ME or not after dot1x authentication from Switch/ISE via EAP method TLS	Passed	
WLJPI34S_dot1x_05	Providing invalid credentials for AP authentication and checking the status of AP in console	To check whether AP throws error message or not when invalid credentials provided during dot1x authentication	Passed	
WLJPI34S_dot1x_06	Disabling dot1x support in Switch and trying to associate AP via Dot1x authentication to ME WLC	To check whether AP joins ME or not even dot1x is disabled in switch	Passed	
WLJPI34S_dot1x_07	Enabling dot1x auth for AP in 3850 Switch	Configuring the 3850 Switch for Dot1x authentication by mapping the identity profiles to a port.	Passed	

Manage ME controllers in Prime

Logical ID	Title	Description	Status	Defect Id
------------	-------	-------------	--------	-----------

WLJPB4S_ME_Prime_01	Configuring ME in PI and check the Inventory Collection Status	Verify that user is able to add the ME controller in PI with the Inventory Collection Status as Completed or not	Passed	
WLJPB4S_ME_Prime_02	Changing the SNMP credentials and checking the Collection Status of ME in PI	Verifying the behavior of ME in PI after changing the configuration in the ME controller	Passed	
WLJPB4S_ME_Prime_03	Configuring ME in PI with only Read Community	Verifying whether the user is able to edit or not in Read only Community	Passed	
WLJPB4S_ME_Prime_04	Re-directing to ME controller Web UI from PI	Checking whether the re-direction to the ME Web UI is working or not by clicking on "Launch Controller Web UI" from PI.	Passed	
WLJPB4S_ME_Prime_05	Discovering all the APs in PI that are associated with ME controller	Verify that all the Aps discovered in PI are associated with ME controller or not	Passed	
WLJPB4S_ME_Prime_06	Synchronizing the ME controller functionalities with PI	Discovering all the ME functionalities are synchronized or not in PI after joining the ME Controller	Passed	
WLJPB4S_ME_Prime_07	Checking the AP behavior both in PI & ME controller when the AP is down	Add an AP in ME controller synchronize with PI down the AP and check whether AP is down both in ME & PI	Passed	
WLJPB4S_ME_Prime_08	Monitoring the ME controller from PI	Verify that user is able to monitor the configured ME controller from PI or not	Passed	

WLJPB4S_ME_Prime_09	Pushing WLAN template from ME to PI with L2 Security - Mac Filtering	To check whether WLAN template with L2 Security-Mac Filtering deployed successfully or not in ME and check by associating clients to this WLAN	Passed	
WLJPB4S_ME_Prime_10	Create WLAN in ME UI page in PI with L2 security-WPA+WPA2802.1x	To check that WLAN created or not in PI with 'WPA+WPA2', 802.1x enabled and Android, iOS & windows client connect successfully and it should reflect in ME.	Passed	
WLJPB4S_ME_Prime_11	Verifying the WLAN name as the Japanese character	To check whether the WLAN name with the Japanese character is accepted or not.	Passed	
WLJPB4S_ME_Prime_12	Create AP groups in PI and check whether it is reflecting in ME	To verify whether AP groups is created successfully in PI with RF profile and a WLAN and getting reflected in ME or not.	Passed	
WLJPB4S_ME_Prime_13	Adding the wlan in AP group and connecting the JOS client	To verify that user is able to connecting the different OS client with ap group or not	Passed	
WLJPB4S_ME_Prime_14	Deleting AP group when an AP is associated	Verifying whether the user is able to delete or not the AP group when an AP is associated	Passed	
WLJPB4S_ME_Prime_15	Create RF Profile in ME and sync with PI	To check whether RF profile created in ME is reflecting in PI or not.	Passed	

WLJPB4S_ME_Prime_16	Drop/mark the facebook application for the connected clients to the created AVC profile	To confirm whether the particular facebook application is been dropped/marked	Passed	
WLJPB4S_ME_Prime_17	Drop/mark the Gmail application for the connected clients to the created AVC profile	To confirm whether the particular Gmail application is been dropped/marked	Passed	
WLJPB4S_ME_Prime_18	Checking the clients performance in dashboard in PI &ME	To monitor the performance of the clients both in PI &ME	Passed	
WLJPB4S_ME_Prime_19	ACL rules for Specified source address with Deny action	To verify whether ACL rule is applied to the specified source address with Deny action or not	Passed	
WLJPB4S_ME_Prime_20	ACL rules for Specified destination address with Permit action	To verify whether ACL rule is applied to the specified destination address with Permit action or not	Passed	
WLJPB4S_ME_Prime_21	Mapping a Internal DHCP pool to WLAN and verifying Windows Client IP Address and VLAN id	To verify whether a window client get IP address and VLAN id from a specified DHCP pool or not	Passed	
WLJPB4S_ME_Prime_22	Mapping a Internal DHCP pool to WLAN and verifying Android Client IP Address and VLAN id	To verify whether a Android client get IP address and VLAN id from a specified DHCP pool or not	Passed	



CHAPTER 4

Regression Features - Test Summary

- Custom Reports, on page 27
- Config Group , on page 35
- Network health , on page 36
- Next Generation Maps, on page 37
- DHCP Server to ME, on page 40
- TrustSec SGT/SG ACL , on page 41
- MAC filtering capability for lobby ambassadors , on page 42
- Scheduled AP Upgrade, on page 43
- Domain based URL ACL, on page 45
- Autonomous to LWAPP Migration , on page 45
- High Availability, on page 46
- Flex AVC , on page 47
- APIC -EM Controller , on page 49
- SWIM, on page 50
- HA Enhancement , on page 51
- CMX 10.4 Support Update, on page 52
- Rolling AP , on page 53
- Monitor Mode support in APs (1810/1815) , on page 55
- AP Health Extension , on page 57
- WLC Health Scoring , on page 59
- EoGRE Profile , on page 62
- Flex+Bridge mode support for AP's , on page 64
- 3504 WLC Support , on page 66
- Open DNS , on page 67
- Support Hyperlocation config enhancement in Lightweight AP template, on page 68
- Outdoor AP GPS support , on page 69
- Config Wireless, on page 70

Custom Reports

Logical ID	Title	Description	Status	Defect Id
------------	-------	-------------	--------	-----------

WLJPI34S_Reg_01	Generating a custom report for the top AP by client count	To check whether a custom report for the top AP by client count is generated or not	Passed	
WLJPI34S_Reg_02	Generating a custom report for Interface utilization	To check whether a custom report for Interface Utilization is generated or not	Passed	
WLJPI34S_Reg_03	Generating a custom report for Busiest AP	To check whether a custom report for Busiest AP is generated or not	Passed	
WLJPI34S_Reg_04	Generating a custom report for AP utilization	To check whether a custom report for AP utilization is generated or not	Passed	
WLJPI34S_Reg_05	Creating sub report for Unique client and users summary as client summary by SSID	To check whether subreport Client summary by SSID can be customized or not	Passed	
WLJPI34S_Reg_06	Creating sub report for Unique client and users summary as client summary by VLAN	To check whether subreport Client summary by VLAN can be customized or not	Passed	
WLJPI34S_Reg_07	Creating sub report for rogue AP Events	To check whether subreport for rogue AP Events can be customized or not	Passed	
WLJPI34S_Reg_08	Creating sub report for rogue APs(Updated)	To check whether subreport for rogue AP Events can be customized or not	Passed	
WLJPI34S_Reg_09	Creating sub report for Worst RF APs	To check whether subreport for Worst RF APs can be customized or not	Passed	
WLJPI34S_Reg_10	Creating sub report for AP RF Quality	To check whether subreport for AP RF Quality can be customized or not	Passed	

WLJPI34S_Reg_11	Creating sub report for Wireless Network Utilization	To check whether subreport for Wireless Network Utilization can be customized or not	Passed	
WLJPI34S_Reg_12	Generating a custom for Busiest Client	To check whether a custom report for Client count is generated or not	Passed	
WLJPI34S_Reg_13	Generating a custom for Client count	To check whether a custom report for client count is generated or not	Passed	
WLJPI34S_Reg_14	Generating a custom for unique clients and users Summary	To check whether a custom report for unique clients and users Summary is generated or not	Passed	
WLJPI34S_Reg_15	Generating a custom for Rogue AP Events	To check whether Generate a custom report for Rogue AP events is generated or not	Passed	
WLJPI34S_Reg_16	Generating a custom for Rogue AP	To check whether Generate a custom report for Rogue AP	Passed	
WLJPI34S_Reg_17	Generating a custom for Adaptive WIPS Top 10 AP	To check whether a custom report for Adaptive WIPS Top 10 AP is generated or not	Passed	
WLJPI34S_Reg_18	Generating a custom for Application Summary	To check whether a custom report for Application summary is generated or not	Passed	
WLJPI34S_Reg_19	Generating a custom for worst RF Aps	To check whether a custom report for Worst RF Aps is generated or not	Passed	
WLJPI34S_Reg_20	Generating a custom for Site Summary	To check whether a custom report for Site Summary is generated or not	Passed	

WLJPI34S_Reg_21	Generating a custom report for AP RF Quality	To check whether a custom report for Wireless Network Utilization is generated or not	Passed	
WLJPI34S_Reg_22	Generating a custom report for Wireless Network Utilization	To check whether Generate a custom report for AP RF Quality	Passed	
WLJPI34S_Reg_23	Creating a composite custom result for client	To check whether a composite custom report for client is generated or not	Passed	
WLJPI34S_Reg_24	Creating a composite custom result for device	To check whether a composite custom report for device is generated or not	Passed	
WLJPI34S_Reg_25	Creating a composite custom result for Security	To check whether a composite custom report for Security is generated or not	Passed	
WLJPI34S_Reg_26	Creating a composite custom result for Performance	To check whether a composite custom report for Performance is generated or not	Passed	
WLJPI34S_Reg_27	Creating a composite custom reports for different groups	To check whether a composite custom report by combining template from different group is generated or not	Passed	
WLJPI34S_Reg_28	Scheduling a report on particular time through PI GUI	To check whether report can be scheduled or not on a fixed time	Passed	
WLJPI34S_Reg_29	Verifying the scheduled template in composite report	To check whether the scheduled report is listed or not in the Composite Report	Passed	
WLJPI34S_Reg_30	Verifying the scheduled template in saved report template	To check whether the scheduled report is listed or not in the saved report template	Passed	

WLJPI34S_Reg_31	Verifying that the scheduled report is running at the selected date & time selected.	To check whether the scheduled report is running at the selected date & time selected or not	Passed	
WLJPI34S_Reg_32	Verifying that the scheduled run report is shown in the Scheduled Run Results page	To verify that the scheduled run report is shown in the Scheduled Run Results page	Passed	
WLJPI34S_Reg_33	Verify the scheduled run report is shown in the Job Dashboard	To verify the scheduled run report is shown in the Job Dashboard or not	Passed	
WLJPI34S_Reg_34	Saving the report and viewing it in GUI	To check whether that saved report is available in PI GUI or not	Passed	
WLJPI34S_Reg_35	Exporting the saved report	To check whether verify whether the saved report can be mailed or not	Passed	
WLJPI34S_Reg_36	Savind and mailing the report	To check whether the saved report can be exported or not	Passed	
WLJPI34S_Reg_37	Checking the dependency in other pages	To check whether whether the custom report page appear there or not	Passed	
WLJPI34S_Reg_38	Checking th custom report in favorite icon	To check whether the custom report is listed in favorite icon	Passed	
WLJPI34S_Reg_39	Verifying the Help menu for the Custom Report Page	To check whether details of custom reports in Help Page is listed or not	Passed	
WLJPI34S_Reg_40	Creating the report in Summary View	To check whether the view of report can be changed to summary view or not	Passed	
WLJPI34S_Reg_41	Creating the report in deatiled View	To check whether the view of report can be changed to deatiled view or not	Passed	

WLJPI34S_Reg_42	Creating the Sub report for the Top AP by client Count	To check whether Sub report can be created or not	Passed	
WLJPI34S_Reg_43	Creating the Sub report for the Top AP by client Count by applying data filed Sorting	To check whether Sub report for Top AP Client count data can be sorted or not as per condition	Passed	
WLJPI34S_Reg_44	Creating the Sub report for the Interface Utilization	To check whether Sub report for Interface utilization can be created or not	Passed	
WLJPI34S_Reg_45	Creating the Sub report for the Interface Utilization by applying data filed Sorting	To check whether Sub report data for Interface utilization can be sorted or not as per condition	Passed	
WLJPI34S_Reg_46	Creating Sub reoprnt for device helath and applying sorting on result	To check whether the subreport for device health can be customized or not	Passed	
WLJPI34S_Reg_47	Enabling the sub report for the Device Helath	To check whether the subreport for device health can be created or not	Passed	
WLJPI34S_Reg_48	Creating report for 802.11 a/an/ac Busiet AP	To check whether the report for 802.11a.a/an/ac can be created or not	Passed	
WLJPI34S_Reg_49	Creating Sub reoprnt for 802.11a/an/ac Busiet AP and applying sorting on result	To check whether the subr report for 802.11a.a/an/ac can be created or not	Passed	
WLJPI34S_Reg_50	Creating report for 802.11 b/g/n Busiet AP	To check whether the report for 802.11 b/g/n can be created or not	Passed	
WLJPI34S_Reg_51	Creating Sub reoprnt for 802.11a/an/ac Busiet AP and applying sorting on result	To check whether the subr report for 802.11 b/g/n can be created or not	Passed	

WLJPI34S_Reg_52	Creating report for AP utilization for 802.11 b/g/n radio	To check whether the report for 802.11a.a/an/ac can be created or not	Passed	
WLJPI34S_Reg_53	Creating sub report for AP utilization for 802.11 a/an/ac radio	To check whether the subr report for 802.11 a/an/ac can be created or not	Passed	
WLJPI34S_Reg_54	Creating report for AP utilization for 802.11 b/g/n radio	To check whether the report for AP Utilization for radio 802.11 b/g/n can be created or not	Passed	
WLJPI34S_Reg_55	Creating sub report for AP utilization for 802.11 b/g/n radio	To check whether the subr report for AP Utilization for 802.11 b/g/n radio can be created and sorted or not	Passed	
WLJPI34S_Reg_56	Creating sub report for Busiest Clinet	To check wheter the subreports for Busiest clinet can be customized or not	Passed	
WLJPI34S_Reg_57	Creating sub report for Unique client and users Summary as Client User Summary	To check whether subreport Client user summary can be customized or not	Passed	
WLJPI34S_Reg_58	Creating sub report for Unique client and users Summary as Client Traffic Summary	To check whether subreport Client Traffic summary can be customized or not	Passed	
WLJPI34S_Reg_59	Creating sub report for Unique client and users summary as client summary by protocol	To check whether subreport Client summary by protocol can be customized or not	Passed	
WLJPI34S_Reg_60	Creating sub report for Unique client and users summary as client summary by Vendor	To check whether subreport Client summary by vendor can be customized or not	Passed	

WLJPI34S_Reg_61	Creating sub report for Unique client and users summary as client summary by SSID	To check whether subreport Client summary by SSID can be customized or not	Passed	
WLJPI34S_Reg_62	Creating sub report for Unique client and users summary as client summary by VLAN	To check whether subreport Client summary by VLAN can be customized or not	Passed	
WLJPI34S_Reg_63	Creating sub report for rogue AP Events	To check whether subreport for rogue AP Events can be customized or not	Passed	
WLJPI34S_Reg_64	Creating sub report for rogue APs(Updated)	To check whether subreport for rogue AP Events can be customized or not	Passed	
WLJPI34S_Reg_65	Creating sub report for Worst RF APs	To check whether subreport for Worst RF APs can be customized or not	Passed	
WLJPI34S_Reg_66	Creating sub report for AP RF Quality	To check whether subreport for AP RF Quality can be customized or not	Passed	
WLJPI34S_Reg_67	Creating sub report for Wireless Network Utilization	To check whether subreport for Wireless Network Utilization can be customized or not	Passed	
WLJPI34S_Reg_68	Scheduling a report on particular time through Japanese GUI	To verify whether report can be scheduled or not in Japanese GUI as in Japanese time format	Passed	
WLJPI34S_Reg_69	Verifying Saved run result in Japanese GUI for Scheduled report result	To verify whether Scheduled run result is present or not Japanese GUI for selected time Period	Passed	

Config Group

Logical ID	Title	Description	Status	Defect Id
WLJPI34S_Reg_70	Deploying template on Aireos controller via config group and verifying the controller behavior	Verifying that user is able to deploy template on Aireos controller via config group or not	Passed	
WLJPI34S_Reg_71	Deploying template on Aireos controller of UTF char. config group and verifying the controller behavior	Create new Config Group with UTF-8 character and deploying on controller	Passed	
WLJPI34S_Reg_72	Deploying template on non Aireos controller UTF char. config group	Verifying that user is able to deploy template on non Aireos controller or not	Passed	
WLJPI34S_Reg_73	Deploying multiple templates on Aireos controller via config group	Verifying that user is able to deploy multiple templates on Aireos controller	Passed	
WLJPI34S_Reg_74	Deploying multiple security type wlan on controller via config group and connecting the client	Verifying that user is able to deploy multiple security type wlan on controller	Passed	
WLJPI34S_Reg_75	Deploying template on vWLC via config group	Verifying that user is able to deploy template on Vwlc or not	Passed	
WLJPI34S_Reg_76	Deploying template on CME via config group	Verifying that user is able to deploy on CME	Passed	
WLJPI34S_Reg_77	Deploying template on Vwlc/Aireos controller/CME via config group after modify the config group	Verifying that user is able to deploy template on controller/CME/Vwlc after modify the config group	Passed	

WLJPI34S_Reg_78	Try to deploy invalid template on controller via config group	Verifying that user is able to deploy invalid template on controller via config group or not	Passed	
WLJPI34S_Reg_79	Monitoring the dashboard after deploying template on controller	Verifying the dashboard after deploying the template on controller	Passed	
WLJPI34S_Reg_80	Client connectivity after deploy AVC template via config group on controller	Verifying the client connectivity after deploying AVC template on controller via config group	Passed	

Network health

Logical ID	Title	Description	Status	Defect Id
WLJPI34S_Reg_81	Adding a controller in PI and monitoring the clients in Network summary	Verifying the top clients by data usage	Failed	CSCvi88345
WLJPI34S_Reg_82	Monitor the top clients of different OS by data uses	Verifying the top clients by data usage	Passed	
WLJPI34S_Reg_83	Setting the wireless health rule and verifying that rule is working or not	Verify that user can edit the wireless health rule and apply on device or not	Passed	
WLJPI34S_Reg_84	Monitoring the signal strength of different OS client	Verifying the signal strength for different OS client	Passed	
WLJPI34S_Reg_85	Verifying that Wireless Dashlets in Network Health are working for site filter and time filter or not	To check the Wireless Dashlets in Network Health are working for site filter and time filter or not	Passed	
WLJPI34S_Reg_86	Monitoring the signal quality distribution of different OS client	Monitor the signal quality distribution for client	Passed	

WLJPI34S_Reg_87	Monitoring the network health of created campus site	To check that user can monitor the network health of created sites or not	Passed	
WLJPI34S_Reg_88	Monitor the Connection rate of connected client	Monitor the Connection rate for connected client	Passed	
WLJPI34S_Reg_89	Creating location group with UTF character	Verify that user can create location group with UTF for monitor network health or not	Passed	
WLJPI34S_Reg_90	Monitor the Network Health of access point	Verify the Network Health of Access Point by applying time filter	Failed	CSCvi88366
WLJPI34S_Reg_91	Monitoring the client distribution by RSSI/connected protocol/SNR/End point type	Verify that user can Monitor the client distribution by RSSI/connected protocol/SNR/End point type or not	Passed	
WLJPI34S_Reg_92	Monitoring the AP distribution by channel initial function to create hole	Verify that user can Monitor the AP distribution by channel initial function to create hole or not	Passed	

Next Generation Maps

Logical ID	Title	Description	Status	Defect Id
WLJPI34S_Reg_93	Creating a New Site with/without a image	To verify whether the new site is created or not with\without any image .	Passed	
WLJPI34S_Reg_94	Creating a new building in Map/tabular/Grid view to the site	To check whether new building is created or not in map/tabular/Grid view	Passed	
WLJPI34S_Reg_95	Configuring a AP to a floor of a building	To check if the AP getting added to the floor or not	Passed	

WLJPI34S_Reg_96	Positioning the AP in the different floor of the building	To position a AP in the building floors and check if the AP is positioned properly.	Passed	
WLJPI34S_Reg_97	Deleting a AP from the floor of the building	To delete the AP from the floor of the building and check if the AP gets deleted from it or not	Passed	
WLJPI34S_Reg_98	Exporting a Building and the floor configuration	To export the building and floor configuration and check if the configuration is exported properly	Passed	
WLJPI34S_Reg_99	Importing a building configuration to the site map	To import a building and floor configuration and check if the configuration is imported properly or not.	Passed	
WLJPI34S_Reg_100	Exporting the floor image to a pdf	To export a floor image as a pdf and check if the image of the floor and details shown properly or not	Passed	
WLJPI34S_Reg_101	Configuring auto refresh interval	To configure auto refresh interval and check if the floor gets refreshed or not.	Passed	
WLJPI34S_Reg_102	Checking the number of clients connected to each building and floor	To check the number of clients associated to each building and checking the details of the client	Passed	

WLJPI34S_Reg_103	Changing the Map properties and enabling the next generation Maps	To change the properties of the Maps and enabling the next generation maps and check if the change are made to it.	Passed	
WLJPI34S_Reg_104	Connecting a JOS client to a AP positioned in the Floor	To check if the JOS client gets connected to the AP in the floor and check if the client is show in the Client and user page or not	Passed	
WLJPI34S_Reg_105	Connecting a Android client to a AP positioned in the Floor	To check if the Android client gets connected to the AP in the floor and check if the client is show in the Client and user page or not	Passed	
WLJPI34S_Reg_106	Connecting a Mac OS client to a AP positioned in the Floor	To check if the Mac OS client gets connected to the AP in the floor and check if the client is show in the Client and user page or not	Passed	
WLJPI34S_Reg_107	Connecting a IOS client to a AP positioned in the Floor	To check if the IOS client gets connected to the AP in the floor and check if the client is show in the Client and user page or not	Passed	
WLJPI34S_Reg_108	Connecting a IP Phone client to a AP positioned in the Floor	To check if the IPPhone client gets connected to the AP in the floor and check if the client is show in the Client and user page or not	Passed	
WLJPI34S_Reg_109	Bulk export the AP in Site Maps page	To check whether bulk export of AP function working properly or not in Site maps page of PI	Passed	

WLJPI34S_Reg_110	Exporting the AP's for Geo Maps	To check whether export of Aps for Geo Map is working properly or not in Site maps page of PI	Passed	
WLJPI34S_Reg_111	Exporting the Map archive in tar format and importing the same tar file	To check whether export/import the tar file works properly or not in Site Maps page	Passed	
WLJPI34S_Reg_112	Trying to import the bulk AP in CSV format	To check whether new CSV file can be imported or not with some AP configurations in it in Site maps page	Passed	
WLJPI34S_Reg_113	Importing AP's for Geo Map in Maps	To check whether AP's can be imported to Geo Map or not from a CSV fie	Passed	
WLJPI34S_Reg_114	Importing MAP archive in XML format	To check Whether MAP archive can be imported or not	Passed	
WLJPI34S_Reg_115	Creating Group hierarchy in Maps	To check whether Group hierarchy can be created or not in PI Maps	Passed	
WLJPI34S_Reg_116	Filtering Available access Point on a particular floor	To check whether the access point can be filtered by name,Mac address,radio type and other avail filter or not	Passed	

DHCP Server to ME

Logical ID	Feature	Title	Description	Status	Defect Id
WLJPB4S_Reg_349	DHCP Server to ME	Connect iPhone client to WLAN after creating DHCP scope	To verify that iPhone connect successfully after creating DHCP scope	Passed	

WLJPI34S_Reg_350	DHCP Server to ME	Connect Japanese client to WLAN after creating DHCP scope	To verify that Japanese connect successfully after creating DHCP scope	Passed	
WLJPI34S_Reg_351	DHCP Server to ME	Connect Android client to WLAN after creating DHCP scope	To verify that Android connect successfully after creating DHCP scope	Passed	
WLJPI34S_Reg_352	DHCP Server to ME	Connect Windows client to WLAN after creating DHCP scope	To verify that Windows connect successfully after creating DHCP scope	Passed	
WLJPI34S_Reg_353	DHCP Server to ME	Connect iOS client to WLAN after creating DHCP scope	To verify that ios connect successfully after creating DHCP scope	Passed	
WLJPI34S_Reg_354	DHCP Server to ME	Scheduled rebooting the CME from PI	To verify whether scheduled rebooting CME from PI is successful.	Passed	
WLJPI34S_Reg_355	DHCP Server to ME	AP configuration from PI joined to CME.	To verify whether AP configuration changes from PI applies successfully in CME.	Passed	

TrustSec SGT/SG ACL

Logical ID	Title	Description	Status	Defect Id
WLJPI34S_Reg_124	Creating a Trustsec Sxp Config Template	To Create a Trustsec Sxp config template and to deploy the the template to the controller and check if the template is deployed	Passed	

MAC filtering capability for lobby ambassadors

WLJPI34S_Reg_125	Creating a WLAN with Dot1x and connect Android client	To create a WLAN with Dot1x Security and deploy it to the controller and connect Android client	Passed	
WLJPI34S_Reg_126	Create a Sxp configuration in WLC and Map it in PI	To create a Sxp Configuration in WLC GUI and deploy the same in PI and check if the configuration is identical	Passed	
WLJPI34S_Reg_127	Creating a Trustsec CTS Config and adding SPX connection Template	To Create a Trustsec CTS config and adding SPX connection template and to deploy the the template to the controller and check if the template is deployed	Passed	

MAC filtering capability for lobby ambassadors

Logical ID	Title	Description	Status	Defect Id
WLJPI34S_Reg_128	MAC filtering capability for lobby ambassadors	Creating local management user with lobby access level in WLC	Passed	
WLJPI34S_Reg_129	Creating , viewing and deleting a lobby admin user in WLC	To check whether lobby admin user is created, deleted or not in WLC	Passed	
WLJPI34S_Reg_130	Enabling lobby Admin access to Wlan profile	To check whether lobby admin can access without L3 Sec wlan Profile or not	Passed	
WLJPI34S_Reg_131	Creating a guest user from Guest Management GUI	To check whether guest user is created or not in GUI	Passed	

WLJPI34S_Reg_132	Creating auto password for user	To check whether generate a auTo check whether password for guest user	Passed	
WLJPI34S_Reg_133	Adding a permanent guest user from WLC Guest Management GUI	To check +D6:E31 whether prmanent guest user is added or not	Passed	
WLJPI34S_Reg_134	Creating local management user with read only access level	To create local management user with read only access level	Passed	
WLJPI34S_Reg_135	Creating local management user with read write access level	To create local management user with read write access level	Passed	
WLJPI34S_Reg_136	Accessing guest user Management GUI	To verify Aun for a lobby user	Passed	

Scheduled AP Upgrade

Logical ID	Title	Description	Status	Defect Id
WLJPI34S_Reg_336	Upgrading the primary image of WLC and AP predownload via TFTP server	Verify that user is able to download the primary software of AP predownload and WLC via TFTP or not	Passed	
WLJPI34S_Reg_337	Upgrading the primary image of WLC and AP predownload via FTP server	Verify that user is able to download the primary software of AP predownload and WLC via FTP or not	Passed	
WLJPI34S_Reg_338	Upgrading the primary image of WLC and AP predownload via SFTP server	Verify that user is able to download the primary software of AP predownload and WLC via SFTP or not	Passed	

WLJPI34S_Reg_339	Upgrading the primary image of WLC and AP predownload via TFTP server	Verify that user is able to download the primary software of AP predownload and WLC via local	Passed	
WLJPI34S_Reg_340	Upgrading the backup image of WLC and AP predownload via TFTP server	Verify that user is able to download the backup software of AP predownload and WLC via FTP or not	Passed	
WLJPI34S_Reg_341	Upgrading the backup image of WLC and AP predownload via FTP server	Verify that user is able to download the backup software of AP predownload and WLC via SFTP or not	Passed	
WLJPI34S_Reg_342	Upgrading the backup image of WLC and AP predownload via SFTP server	Verify that user is able to download the backup software of AP predownload and WLC via TFTP or not	Passed	
WLJPI34S_Reg_343	Upgrading the backup image of WLC and AP predownload via local machine	Verify that user is able to download the backup software of AP predownload and WLC via local machine or not	Passed	
WLJPI34S_Reg_344	Getting the email notification after image download	Verify that user is getting mail notificaton on download image	Passed	
WLJPI34S_Reg_345	Scheduling the WLC reboot after image download	Verify that User is able to schedule the WLC reboot or not	Passed	
WLJPI34S_Reg_346	Disabling the Scheduled image upgrade task	Verify that user is able to disabled the scheduled task or not	Passed	
WLJPI34S_Reg_347	Scheduling the image download of flexconnect AP with WLC	Verify that user is able to download the flexconnect AP image with WLC or not	Passed	

WLJPI34S_Reg_348	Connecting the different OS client after image download	Verify that Client are connecting or not with WLC after image download	Passed	
------------------	---	--	--------	--

Domain based URL ACL

Logical ID	Title	Description	Status	Defect Id
WLJPI34S_Reg_137	Deny cisco site for end level android clients by keeping black list	Blocking cisco site for end level android clients by keeping black list	Passed	
WLJPI34S_Reg_138	Permit cisco site for end level android clients by keeping white list	Permitting cisco site for end level android clients by keeping white list	Passed	
WLJPI34S_Reg_139	Deny cisco site for end level Windows clients by keeping black list	Blocking cisco site for end level Windows clients by keeping black list	Passed	
WLJPI34S_Reg_140	Permit cisco site for end level Windows clients by keeping white list	Permitting cisco site for end level Windows clients by keeping white list	Passed	
WLJPI34S_Reg_141	Deny cisco site for end level MAC clients by keeping black list	Blocking cisco site for end level MAC Clients by keeping black list	Passed	
WLJPI34S_Reg_142	Permit cisco site for end level MAC clients by keeping white list	Permitting cisco site for end level MAC Clients by keeping white list	Passed	

Autonomous to LWAPP Migration

Logical ID	Title	Description	Status	Defect Id
WLJPI34S_Reg_143	Autonomous to LWAPP Migration	To migrate the autonomous to LWAPP	Passed	

WLJPI34S_Reg_144	NCS: migrating autonomous AP to LWAP using the "Schedule for later date/time	To verify if autonomous AP is migrating to LAP immediately using the option " Schedule for later date/time"	Passed	
WLJPI34S_Reg_145	Disable the schedule option for migration	To restrict the schedule option for migration	Passed	
WLJPI34S_Reg_146	Deleting the created template	To wipe out the created template	Passed	
WLJPI34S_Reg_147	Generating the migration report for the created template	To produce the migration report for the created template	Passed	
WLJPI34S_Reg_148	Checking the current status of the Autonomous AP Migration	To examine the current status of the Autonomous AP Migration	Passed	
WLJPI34S_Reg_149	Viewing the Migration Analysis summary for Autonomous AP Migration	To inspect the Migration Analysis summary for Autonomous AP Migration	Passed	
WLJPI34S_Reg_150	Upgrading the firmware manually for the selected AP by clicking view migration analysis summary	To renovate the firmware manually for the selected AP	Passed	
WLJPI34S_Reg_151	Upgrading the firmware automatic for the selected AP by clicking view migration analysis summary	To renovate the firmware automatic for the selected AP	Passed	

High Availability

Logical ID	Title	Description	Status	Defect Id
------------	-------	-------------	--------	-----------

WLJPI34S_Reg_152	PI HA- When primary server is down(HW failure) and Failover type as "Manual"	To check whether PI has been switchover to the secondary when there is a primary server(HW) failure- failover type as "Manual"	Passed	
WLJPI34S_Reg_153	PI HA- When primary server is down(HW failure) and Failover type as "Automatic"	To check whether PI has been switchover to the secondary when there is a primary server(HW) failure- failover type as "Automatic"	Passed	
WLJPI34S_Reg_154	PI HA- When primary server is down(Network failure) and Failover type as "Manual"	To check whether PI has been switchover to the secondary when there is a primary server(NW) failure- failover type as "Manual"	Passed	
WLJPI34S_Reg_155	PI HA- When primary server is down(Network failure) and Failover type as "Manual"	To check whether PI has been switchover to the secondary when there is a primary server(NW) failure- failover type as "Automatic"	Passed	
WLJPI34S_Reg_156	PI HA- Failback to Primary server once it has been recovered from HW failure	To check whether the failback operation is successful after the primary server has been recovered from HW failure	Passed	
WLJPI34S_Reg_157	PI HA- Failback to Primary server once it has been recovered from NW failure	To check whether the failback operation is successful after the primary server has been recovered from NW failure	Passed	

Flex AVC

Logical ID	Title	Description	Status	Defect Id
------------	-------	-------------	--------	-----------

WLJPI34S_Reg_158	Adding flex avc rule in Flexconnect avc profile	To Add flex avc rule in flexconnect avc profile	Passed	
WLJPI34S_Reg_159	Dropping some application via flex avc profile	To Drop some application via Flex avc profile	Passed	
WLJPI34S_Reg_160	Marking the certain application	To Mark the certain application	Passed	
WLJPI34S_Reg_161	Applying the rate limit on some application	To Apply the rate limit on some application	Passed	
WLJPI34S_Reg_162	Trying to set rate limit out range in flex avc rule	Try to set rate limit out range in flex avc rule	Passed	
WLJPI34S_Reg_163	Delete multiple flex connect avc profile	To Delete the multiple flexconnect avc profile	Passed	
WLJPI34S_Reg_164	Try to delete applied flexconnect avc profile	Try to delete applied flexconnect avc profile	Passed	
WLJPI34S_Reg_165	Try change the AVC rule from custom to mark/ratelimit/drop	To verify whether AVC rule rule is changing from custom to mark/ratelimit/drop or not	Passed	
WLJPI34S_Reg_166	Checking AVC rule with more than custom value	To verify whether AVC rule is creating or not more than custom value	Passed	
WLJPI34S_Reg_167	Create the AVC rules in one profile and check in different profile	To verify whether AVC rules are creating in one profile is reflecting in another profile or not	Passed	
WLJPI34S_Reg_168	Create the AVC profile & rule with duplicate name	To verify whether AVC rule and profile name is creating with duplicate name or not	Passed	

APIC -EM Controller

Logical ID	Feature	Title	Description	Status	Defect Id
WLJP34S_Reg_169	APIC -EM Controller	Adding APIC -EM in PI	To Add APIC -EM in PI	Passed	
WLJP34S_Reg_170	APIC -EM Controller	Edit APIC-EM Controller from PI	To verify the edit from the Controller successfully	Passed	
WLJP34S_Reg_171	APIC -EM Controller	Validate the Error message	To verify the error message shown when we add the invalid APIC EM in PI	Passed	
WLJP34S_Reg_172	APIC -EM Controller	APIC-EM reachability history	To verify the APIC-EM reachability history once APIC-EM added	Passed	
WLJP34S_Reg_173	APIC -EM Controller	Delete APIC-EM Controller from PI	To verify if the Controller deleted from PI successfully	Passed	
WLJP34S_Reg_174	APIC -EM Controller	Creating Bootstrap template	To Create Bootstrap template	Passed	
WLJP34S_Reg_175	APIC -EM Controller	Importing Software Images for Plug and Play Profiles	To import software images for plug and play profiles	Passed	
WLJP34S_Reg_176	APIC -EM Controller	Creating PnP profile for switches	To Create PnP profile for switches	Passed	
WLJP34S_Reg_177	APIC -EM Controller	Trying to create PnP profile name with Japanese character	To try to create PnP profile name with Japanese character	Failed	CSCvh80827
WLJP34S_Reg_178	APIC -EM Controller	Creating PnP profile for wireless ap	To Create PnP profile for switches	Passed	

WLJPB4S_Reg_179	APIC -EM Controller	Creating PnP profile for wireless ap with Controllers which name in Japanese character	To Create PnP profile for wireless ap with Controllers which name in Japanese character	Passed	
WLJPB4S_Reg_180	APIC -EM Controller	Adding the PI in APIC -EM	To add PI in APIC -EM	Passed	
WLJPB4S_Reg_181	APIC -EM Controller	Plug and play Profile Activation of wireless ap	To activate plug and play profile of wireless ap	Passed	
WLJPB4S_Reg_182	APIC -EM Controller	Plug and play Profile Activation switch	To activate plug and play profile of switch	Passed	
WLJPB4S_Reg_183	APIC -EM Controller	Monitoring the plug and play	To monitor the plug and play	Passed	

SWIM

Logical ID	Feature	Title	Description	Status	Defect Id
WLJPB4S_Reg_184	SWIM	Importing a image from a device	To import a image from a device and check if the images gets imported from the device or not	Passed	
WLJPB4S_Reg_185	SWIM	Importing the image through cisco.com using Credentials	To Import a image from cisco.com by giving the cisco credentials and check if the image gets imported or not	Passed	
WLJPB4S_Reg_186	SWIM	Importing the image through the URL	To import the image using URL and check if the images gets imported or not.	Passed	

WLJP34S_Reg_187	SWIM	Changing the image transfer protocol order .	To change the image transfer protocol order and check if the order is changed or not	Passed	
WLJP34S_Reg_188	SWIM	Checking the image imported through the Software Image Summary	To Check if the image imported is shown in the software image summary or not	Passed	
WLJP34S_Reg_189	SWIM	Adding software image management servers	To Configure a software image management server and check if the server are added or not.	Passed	
WLJP34S_Reg_190	SWIM	Collect images along with inventory collection	To collect images along with inventory Collection and check if the inventory data is successfully collected or not	Passed	
WLJP34S_Reg_191	SWIM	Importing a image through a protocol.	To import a image from a device and check if the images gets imported from the device or not	Failed	CSCvi62439
WLJP34S_Reg_192	SWIM	Distributing the image to different devices .	To distribute different images and check if the devices selected	Passed	

HA Enhancement

Logical ID	Feature	Title	Description	Status	Defect Id
WLJP34S_Reg_193	HA Enhancement	HA registration of PI	To check the HA registration between primary and secondary	Passed	

WLJPB4S_Reg_194	HA Enhancement	HA fallback to secondary when primary is failed.	To verify the HA fallback to secondary in case of primary failure.	Passed	
WLJPB4S_Reg_195	HA Enhancement	HA fallback to primary when primary server is restored.	To verify the HA fallback to primary in case of primary server restored.	Passed	
WLJPB4S_Reg_196	HA Enhancement	Verify the HA failover messages.	To verify the HA failure messages	Passed	
WLJPB4S_Reg_197	HA Enhancement	Verifying the HM with new changes.	To verify the Timezone display in Health monitor page.	Passed	
WLJPB4S_Reg_198	HA Enhancement	Verifying the HA events	To verify the HA events triggered when registration and fallback.	Passed	

CMX 10.4 Support Update

Logical ID	Title	Description	Status	Defect Id
WLJPI34S_CMX_01	Importing maps from prime infrastructure	To import maps from prime infrastructure and check if the maps gets imported to the cmx .	Passed	
WLJPI34S_CMX_02	Importing the maps with 2 to 3 Access points from PI to CMX	To import the maps from prime infra to CMX with 2 to 3 access point and check if the access point details are shown correctly including clients connected .	Passed	

WLJPI34S_CMX_03	Connecting the client to the access point on the floor and check if the details of the client.	To connect a client to the access point on the floor and check if the details of the clients are shown correctly or not.	Passed	
WLJPI34S_CMX_04	Connecting many clients from different place and check the location of the clients	To connect many client from different place to the access points and check if the location of the client are shown in CMX	Passed	
WLJPI34S_CMX_05	Searching the client by MAC address in CMX heat map	To check whether client device can be searched by specifying its MAC address or not	Passed	
WLJPI34S_CMX_06	Searching the client using its IP address in CMX heat map	To check whether client device can be searched by specifying its IP address or not	Passed	
WLJPI34S_CMX_07	Searching client using its SSID in CMX heat map	To verify whether client device can be searched by specifying the SSID or not	Passed	
WLJPI34S_CMX_08	Check the number of clients visting the building and floor in hourly basic and daily basic	To check the the number of client visiting the building or floor on hourly and daily basic	Passed	
WLJPI34S_CMX_09	Checking the number of new and repeat visitors to the building or floor.	To check the number of new and repeat clients to the building or floor .	Passed	

Rolling AP

Logical ID	Title	Description	Status	Defect Id
------------	-------	-------------	--------	-----------

WLJPI34S_Reg_219	Providing the same controller name and ip address for primary controller and N+1 controller	To check whether the same controller name is accepted or not for primary controller and N+1 controller	Passed	
WLJPI34S_Reg_220	Upgrading the software image in a controller	To check whether the software image is upgraded in controller	Passed	
WLJPI34S_Reg_221	Upgrading the software image into a group of AP	To check whether the software image is upgraded in group of AP	Passed	
WLJPI34S_Reg_222	Upgrading the software image into existing group of AP	To check whether the software image is upgraded into existing group of AP	Passed	
WLJPI34S_Reg_223	Scheduling the time to upgrade the software image into a controller.	To check whether the software image is upgraded into a controller in scheduling time	Passed	
WLJPI34S_Reg_224	Upgrade the image to WLC from PI rolling AP upgrade TFTP	To check whether the WLC is upgraded using TFTP from PI	Passed	
WLJPI34S_Reg_225	Upgrade the image to WLC from PI rolling AP upgrade FTP	To check whether the WLC is upgraded using FTP from PI	Passed	
WLJPI34S_Reg_226	Scheduling the time "Now" to upgrade the software image into a controller.	To check whether the software image is upgraded into a controller in scheduling time "Now"	Passed	
WLJPI34S_Reg_227	Reboot trigger to WLC from PI after upgrade the software image in controller.	To check whether WLC is reloaded when triggering from PI after upgrade the software image in controller.	Passed	

WLJPI34S_Reg_228	Upgrade the wrong file name into the WLC from PI	To verify whether the error message will display when trying to upgrade wrong file into the WLC from PI	Passed	
WLJPI34S_Reg_229	Moving AP's back to primary controller from PI.	To verify whether the AP's are move back into primary controller.	Passed	
WLJPI34S_Reg_230	Removing the AP from AP upgrade group	To verify whether the AP remove from the AP upgrade group.	Passed	
WLJPI34S_Reg_231	Adding the AP in AP upgrade group	To verify whether the AP added into AP upgrade group	Passed	
WLJPI34S_Reg_232	AP joining status to WLC's after upgrade the wlc software image and checking the JOS client connectivity.	To check whether the joined Aps upgraded and verify the JOS client connectivity.	Passed	

Monitor Mode support in APs (1810/1815)

Logical ID	Feature	Title	Description	Status	Defect Id
WLJPI34S_Reg_233	Monitor Mode support in APs (1810/1815)	Associating the AP (1810/1815) to WLC and Verifying in PI.	Able to see the AP(1810/1815) In PI,after associating WLC.	Passed	
WLJPI34S_Reg_234	Monitor Mode support in APs (1810/1815)	To verifying the client data rate through PI.	To check the data rate of the particular client connected to the WLAN.	Passed	
WLJPI34S_Reg_235	Monitor Mode support in APs (1810/1815)	To configure the authentication for The AP(1810/1815)	To check whether the authentication is configured into AP(1810/1815)	Passed	

Monitor Mode support in APs (1810/1815)

WLJPB4S_Reg_236	Monitor Mode support in APs (1810/1815)	Associating AP(1810/1815) with different country code as with WLC and check it is not joined in WLC.	To associate AP(1810/1815) with different country code and check it is not joined with WLC.	Passed	
WLJPB4S_Reg_237	Monitor Mode support in APs (1810/1815)	Configuring AP(1810/1815) with duplicate IP address into wlc and verify in PI.	To configure AP with a duplicate IP address and check AP does not join the WLC	Passed	
WLJPB4S_Reg_238	Monitor Mode support in APs (1810/1815)	Checking the AP(1810/1815) channel Utilization/Interference.	To check the timings based on Radio:802.11b/g/n Slot:0 Channel Number, AP(1810/1815) channel Utilization/Interference according to date.	Passed	
WLJPB4S_Reg_239	Monitor Mode support in APs (1810/1815)	Connecting a window client to the AP(1810/1815)	To connect a window client to the AP and check the client gets connected or not.	Passed	
WLJPB4S_Reg_240	Monitor Mode support in APs (1810/1815)	Connecting a Android client to the AP (1810/1815)	To connect a Android client to the AP and check the client gets connected or not.	Passed	
WLJPB4S_Reg_241	Monitor Mode support in APs (1810/1815)	Connecting a IOS client to the AP(1810/1815)	To connect a IOS client to the AP and check the client gets connected or not.	Passed	
WLJPB4S_Reg_242	Monitor Mode support in APs (1810/1815)	Connecting a MAC client to the AP(1810/1815)	To connect a MAC client to the AP and check if the client gets connected or not.	Passed	

WLJPI34S_Reg_243	Monitor Mode support in APs (1810/1815)	Set the AP(1810/1815) monitor mode.	To check whether AP(1810/1815) monitor mode reflected or not in PI after AP mode changing in WLC.	Passed	
WLJPI34S_Reg_244	Monitor Mode support in APs (1810/1815)	Deleting AP(1810/1815) from PI.	To check whether the AP(1810/1815) deleted from AP group.	Passed	
WLJPI34S_Reg_245	Monitor Mode support in APs (1810/1815)	Set the AP(1810/1815) monitor mode in cli.	To check whether AP(1810/1815) monitor mode reflected or not in PI after AP mode changing in WLC CLI.	Passed	
WLJPI34S_Reg_246	Monitor Mode support in APs (1810/1815)	Monitoring the AP(1810/1815) statistics in PI.	To verify AP(1810/1815) statistics in PI.	Passed	
WLJPI34S_Reg_247	Monitor Mode support in APs (1810/1815)	Viewing AP(1810/1815) details via GUI /CLI and PI and comparing each other.	To View AP1810 details via GUI /CLI and PI.	Passed	
WLJPI34S_Reg_248	Monitor Mode support in APs (1810/1815)	Monitoring the AP (1810/1815) Performance.	To monitor the Access point's Performance.	Passed	

AP Health Extension

Logical ID	Title	Description	Status	Defect Id
WLJPI34S_Reg_249	Monitoring the top or bottom APs by client count of different OS by data usage	Verifying the top or bottom Aps clients count by data usage	Passed	

WLJPI34S_Reg_250	Access point Health by applying the time filter	Validate the Access point Health by applying the time filter	Passed	
WLJPI34S_Reg_251	Monitoring the top clients of different OS by data uses	Verifying the top clients by data usage	Passed	
WLJPI34S_Reg_252	AP channel utilization performance after set the time frame	validate the AP channel utilization performance based on time frame setting	Passed	
WLJPI34S_Reg_253	Monitoring the associated/authenticated client count graphically through AP time frame	Verify the client count graphically through AP time frame	Passed	
WLJPI34S_Reg_254	Monitoring the clients bad onboarding score with different OS	Validate the clients bad onboarding signal strength for different OS	Passed	
WLJPI34S_Reg_255	Clients with bad coverage for ALL OS	Verify the bad coverage of clients for ALL OS	Passed	
WLJPI34S_Reg_256	To checking the Japanese client connection rate.	Validate the Japanese client connection rate showing or not .	Passed	
WLJPI34S_Reg_257	Monitoring the AP distribution by channel utilization /interference/ client count/ coverage hole	Validate the user can able to Monitor the AP distribution by channel utilization/interference/ coverage hole or not	Passed	
WLJPI34S_Reg_258	Monitoring the Japanese client distribution by RSSI/connected protocol/SNR/End point type	Verify that user can able to Monitor the Japanese client distribution by RSSI/ connected protocol/ SNR/End point type or not	Passed	
WLJPI34S_Reg_259	Checking the Japanese wireless client traffic through bandwidth	Verify the Japanese wireless client traffic through bandwidth	Passed	

WLJPI34S_Reg_260	Monitoring the signal quality distribution of different OS Japanese wireless client	Validate the signal quality distribution for japanese wireless client	Passed	
WLJPI34S_Reg_261	Checking the AP health for created campus site	Verify the user is able to monitor the AP health of created sites or not	Passed	
WLJPI34S_Reg_262	AP Critical/Generic health metrics for Japanese SSID	Validate the AP Critical/Generic health metrics showing properly or not	Passed	
WLJPI34S_Reg_263	Modify the client health rules	Verify the client health rule is able to apply or not client after modifying	Passed	

WLC Health Scoring

Logical ID	Title	Description	Status	Defect Id
WLJPI34S_Reg_264	Checking the client coverage with the signal strength of AP less than the critical value 50.	If the client connected is less than the coverage of 50 then it indicates green color with no errors and warnings.	Passed	
WLJPI34S_Reg_265	Checking the client coverage with the signal strength of AP more than the critical value 50.	If the client connected is more than the coverage of 50 then it indicates yellow color with warnings.	Passed	
WLJPI34S_Reg_266	Checking the client coverage with the signal strength of AP more than the warning threshold value 70.	If the client connected is more than the coverage of 70 then it indicates red color with critical issues.	Passed	

WLJPI34S_Reg_267	Checking the client Onboarding for the time taken to connect to the network less than 10ms and less than 50	To check whether the network gets connected with less than 10ms and with less than 50 then it indicates green color with no errors and warnings.	Passed	
WLJPI34S_Reg_268	Checking the client Onboarding for the time taken to connect to the network with more than 10ms and less/more than 50	To check whether the network gets connected with more than 10ms and with less/more than 50 then it indicates yellow color with warnings.	Passed	
WLJPI34S_Reg_269	Checking the client Onboarding for the time taken to connect to the network with less/more than 10ms and more than 70	To check whether the network gets connected with less/more than 10ms and with more than 70 then it indicates red color with critical issues.	Passed	
WLJPI34S_Reg_270	Checking the CPU utilization during the client connectivity is less than 50.	To verify during the Client connectivity the CPU utilization is less than 50 means it indicates green color with no errors and warnings.	Passed	
WLJPI34S_Reg_271	Checking the CPU utilization during the client connectivity is more than 50.	To verify during the Client connectivity the CPU utilization is less than 50 means it indicates yellow color with warnings.	Passed	
WLJPI34S_Reg_272	Checking the CPU utilization during the client connectivity is more than 70.	To verify during the Client connectivity the CPU utilization is less than 50 means it indicates red color with critical issues.	Passed	

WLJPI34S_Reg_273	Checking the memory utilization during the client connectivity is less than 50.	To verify during the Client connectivity the memory utilization is less than 50 means it indicates green color with no errors and warnings.	Passed	
WLJPI34S_Reg_274	Checking the memory utilization during the client connectivity is more than 50.	To verify during the Client connectivity the memory utilization is less than 50 means it indicates yellow color with warnings.	Passed	
WLJPI34S_Reg_275	Checking the memory utilization during the client connectivity is more than 70.	To verify during the Client connectivity the memory utilization is less than 50 means it indicates red color with critical issues.	Passed	
WLJPI34S_Reg_276	Checking the devices availability	To check whether the devices are available or not.	Passed	
WLJPI34S_Reg_277	Setting the wireless health rule and verifying that rule is working or not	Verify that user can edit the wireless health rule and apply on device or not	Passed	
WLJPI34S_Reg_278	Connecting to Hotspot client and monitoring the health score	Connecting the client with Hotspot WLAN and monitoring the the Memory & CPU utilization and the Signal Strength.	Passed	
WLJPI34S_Reg_279	Checking the client coverage with the signal strength of AP in CME	To verify the client coverage with AP signal strength in CME and it is indicated with colors as Green-safe, Yellow-warnings & Red-Critical.	Passed	

WLJPI34S_Reg_280	Checking the client Onboarding in CME	To verify the client Onboarding for the time taken to connect to the network in CME and it is indicated with colors as Green-safe, Yellow-warnings & Red-Critical.	Passed	
WLJPI34S_Reg_281	Checking the CPU utilization of the client in support of CME	To verify the CPU utilization during the Client connectivity in CME.	Passed	
WLJPI34S_Reg_282	Checking the memory utilization of the client in support of CME	To verify the memory utilization during the Client connectivity in CME.	Passed	

EoGRE Profile

Logical ID	Title	Description	Status	Defect Id
WLJPI34S_Reg_283	Configuring a tunnel gateway by providing invalid ipv4 address	To check whether proper error message got displayed while creating tunnel gateway with invalid ipv4 address	Passed	
WLJPI34S_Reg_284	Creating a EoGRE Profile Name in Japanese character	To verify whether the EoGRE Profile Name accepts Japanese character or not	Passed	
WLJPI34S_Reg_285	Deploying the template from PI to Controller	To push the saved template from PI to controller	Passed	
WLJPI34S_Reg_286	Checking the current Job Status from created template	To verify the current Job Status from created template	Passed	
WLJPI34S_Reg_287	Configuring the EoGRE rule to set up the tunnel	To validate whether EoGRE rule reflects after it got saved	Passed	

WLJPI34S_Reg_288	Connecting Android clients with Flexconnect local switching enabled WLAN with Tunnel profile Rule followed by marking Tunnel Parameters Gateway as AAA Proxy and Accounting proxy	To check whether Android clients get associated while Flexconnect local switching enabled WLAN with Tunnel profile Rule followed by marking Tunnel Parameters Gateway as AAA Proxy and Accounting proxy	Passed	
WLJPI34S_Reg_289	Connecting Android clients with Flexconnect local switching enabled WLAN with Tunnel profile Rule followed by marking Tunnel Parameters as DHCP option-82	To check whether Android clients get associated while Flexconnect local switching enabled WLAN with Tunnel profile Rule followed by marking Tunnel Parameters Gateway as DHCP Option - 82	Passed	
WLJPI34S_Reg_290	Connecting IOS clients to a local switching enabled WLAN with Tunnel profile Rule followed by marking Tunnel Parameters Gateway as AAA Proxy and Accounting proxy	To check whether IOS clients get associated while Flexconnect local switching enabled WLAN with Tunnel profile Rule followed by marking Tunnel Parameters Gateway as AAA Proxy and Accounting proxy	Passed	
WLJPI34S_Reg_291	Connecting Windows clients to a local switching enabled WLAN with Tunnel profile Rule followed by marking Tunnel Parameters Gateway as AAA Proxy and Accounting proxy	To check whether Windows clients get associated while Flexconnect local switching enabled WLAN with Tunnel profile Rule followed by marking Tunnel Parameters Gateway as AAA Proxy and Accounting proxy	Passed	

Flex+Bridge mode support for AP's

WLJPI34S_Reg_292	Associating Apple MacBook clients to a local switching enabled WLAN with Tunnel profile Rule followed by marking Tunnel Parameters Gateway as AAA Proxy and Accounting proxy	To check whether Apple clients get associated while Flexconnect local switching enabled WLAN with Tunnel profile Rule followed by marking Tunnel Parameters Gateway as AAA Proxy and Accounting proxy	Passed	
WLJPI34S_Reg_293	Connecting IOS clients to a local switching enabled WLAN with Tunnel profile Rule followed by marking Tunnel Parameters as DHCP option-82	To check whether IOS clients get associated while Flexconnect local switching enabled WLAN with Tunnel profile Rule followed by marking Tunnel Parameters as DHCP option-82	Passed	
WLJPI34S_Reg_294	Connecting Windows clients to a local switching enabled WLAN with Tunnel profile Rule followed by marking Tunnel Parameters as DHCP option-82	To check whether Windows clients get associated while Flexconnect local switching enabled WLAN with Tunnel profile Rule followed by marking Tunnel Parameters as DHCP option-82	Passed	
WLJPI34S_Reg_295	Associating Apple MacBook clients to a local switching enabled WLAN with Tunnel profile Rule followed by marking Tunnel Parameters as DHCP option-82	To check whether Apple clients get associated while Flexconnect local switching enabled WLAN with Tunnel profile Rule followed by marking Tunnel Parameters as DHCP option-82	Passed	

Flex+Bridge mode support for AP's

Logical ID	Title	Description	Status	Defect Id
------------	-------	-------------	--------	-----------

WLJPI34S_Reg_296	Checking the JOS clients association with AP configured in Flex+bridge mode	To check whether JOS clients getting associated or not to AP configured in Flex+Bridge mode	Passed	
WLJPI34S_Reg_297	Checking the Android clients association with AP configured in Flex+bridge mode	To check whether Android clients getting associated or not to AP configured in Flex+Bridge mode	Passed	
WLJPI34S_Reg_298	Checking the iOS clients association with AP configured in Flex+bridge mode	To check whether iOS clients getting associated or not to AP configured in Flex+Bridge mode	Passed	
WLJPI34S_Reg_299	Checking the MAC OS clients association with AP configured in Flex+bridge mode	To check whether MAC OS clients getting associated or not to AP configured in Flex+Bridge mode	Passed	
WLJPI34S_Reg_300	Checking the Android & iOS clients associations with Flex+Bridge mode AP in local authentication	To check whether Android & iOS clients getting associated or not to Flex+bridge mode AP when Local authentication is enabled	Passed	
WLJPI34S_Reg_301	Checking the MAC & JOS clients associations with Flex+Bridge mode AP in local authentication	To check whether MAC & JOS clients getting associated or not to Flex+bridge mode AP when Local authentication is enabled	Passed	
WLJPI34S_Reg_302	Checking the Android & iOS clients associations with Flex+Bridge mode AP in RAP after Mesh setup	To check whether Android & iOS clients getting associated or not to Flex+bridge mode AP which is configured as Root AP	Passed	

WLJPI34S_Reg_303	Checking the MAC & JOS clients associations with Flex+Bridge mode AP in RAP after Mesh setup	To check whether MAC & JOS clients getting associated or not to Flex+bridge mode AP which is configured as Root AP	Passed	
WLJPI34S_Reg_304	Checking the Android & iOS clients associations with Flex+Bridge mode AP in MAP after Mesh setup	To check whether Android & iOS clients getting associated or not to Flex+bridge mode AP which is configured as Mesh AP	Passed	
WLJPI34S_Reg_305	Checking the MAC & JOS clients associations with Flex+Bridge mode AP in MAP after Mesh setup	To check whether MAC & JOS clients getting associated or not to Flex+bridge mode AP which is configured as Mesh AP	Passed	
WLJPI34S_Reg_306	Performing the Intra roaming for Android & iOS clients between 2 AP's	To check whether Android & IOS clients can be roamed between 2 AP's (mode as Flex+bridge) in a WLC	Passed	
WLJPI34S_Reg_307	Performing the Intra roaming for MAC & Windows JOS clients between 2 AP's	To check whether MAC & JOS clients can be roamed or not between 2 AP's (mode should be different) in a WLC	Passed	
WLJPI34S_Reg_308	Performing Inter roaming of all OS clients between 2 WLC's	To check whether all OS clients can be roamed or not between 2 AP's in different WLC	Passed	

3504 WLC Support

Logical ID	Feature	Title	Description	Status	Defect Id
------------	---------	-------	-------------	--------	-----------

WLJPI34S_Reg_309	3504 WLC Support	Deploying the template from PI to Controller	To push the saved template from PI to controller	Passed	
WLJPI34S_Reg_310	3504 WLC Support	Synchronizing the PI device with controller	Matching the PI device with controller	Passed	
WLJPI34S_Reg_311	3504 WLC Support	Deleting the device from the PI	To remove the device from the PI	Passed	
WLJPI34S_Reg_312	3504 WLC Support	Changing the admin state of the device	To alter the admin state of the device	Passed	
WLJPI34S_Reg_313	3504 WLC Support	Checking whether filter option works properly on PI	To examine whether filter option works properly on PI	Passed	

Open DNS

Logical ID	Title	Description	Status	Defect Id
WLJPI34S_Reg_314	Creating the Open DNS Profile with Japanese character	To build the Open DNS Profile with Japanese character	Passed	
WLJPI34S_Reg_315	Changing the WLAN Mode for the Created WLAN Profile Name	To Vary the WLAN Mode for the Created WLAN Profile Name	Passed	
WLJPI34S_Reg_316	Mapping the Created WLAN Profile name with an AP group	To Represent the Created WLAN Profile Name with an AP Group	Passed	
WLJPI34S_Reg_317	Creating the Policy Name for the Created WLAN Profile Name	To form the Policy Name for the Created WLAN Profile Name	Passed	
WLJPI34S_Reg_318	Deploying the template from PI to Controller	To push the saved template from PI to controller	Passed	

Support Hyperlocation config enhancement in Lightweight AP template

Logical ID	Title	Description	Status	Defect Id
WLJPI34S_Reg_319	Copying the all external antenna parameter of 802.11 a/n/ac radio to other radio	Verify that user is able to copy the all antenna parameter of 802.11 a/n/ac radio to other radio or not and deploying the template on AP	Passed	
WLJPI34S_Reg_320	Copying the some selected external antenna parameter of 802.11 a/n/ac radio to other radio	Verify that user is able to copy the some selected antenna parameter of 802.11 a/n/ac radio to other radio or not and deploying the template on AP	Passed	
WLJPI34S_Reg_321	Copying the all external antenna parameter of 802.11 b/g/n radio to other radio	Verify that user is able to copy the all antenna parameter of 802.11 b/g/n radio to other radio or not and deploying the template on AP	Passed	
WLJPI34S_Reg_322	Copying the some selected external antenna parameter of 802.11 b/g/n radio to other radio	Verify that user is able to copy the some selected antenna parameter of 802.11 b/g/n radio to other radio or not and deploying the template on AP	Passed	
WLJPI34S_Reg_323	Copying the all external antenna parameter of 802.11 a/b/g/n radio to other radio	Verify that user is able to copy the all antenna parameter of 802.11 a/b/g/n radio to other radio or not and deploying the template on AP	Passed	

WLJPI34S_Reg_324	Copying the some selected external antenna parameter of 802.11 a/b/g/n radio to other radio	Verify that user is able to copy the some selected antenna parameter of 802.11a/b/g/n radio to other radio or not and deploying the template on AP	Passed	
WLJPI34S_Reg_325	Connecting the different OS client after deploying the template of AP	Checking the client connectivity after deploying the AP template	Passed	
WLJPI34S_Reg_326	Checking the radio status of ap after deploying the ap template	Verify the radio status of AP after deploying the AP template	Passed	
WLJPI34S_Reg_327	Trying to deploy ap template with invalid external parameter	Checking that user is able to deploy the ap template with in valid antenna parameter	Passed	

Outdoor AP GPS support

Logical ID	Title	Description	Status	Defect Id
WLJPI34S_Reg_328	Joining the outdoor AP with WLC	Verify that user is able to join outdoor with WLC or not	Passed	
WLJPI34S_Reg_329	Discovering the outdoor AP PI	Verify that outdoor ap discovering in PI or not	Passed	
WLJPI34S_Reg_330	Creating the MAPs and adding the outdoor AP	Verify that user is able to create map and add the outdoor ap in that map or not	Passed	
WLJPI34S_Reg_331	Locating the outdoor ap on maps	Locating the outdoor ap via GPS on map	Passed	
WLJPI34S_Reg_332	Exporting the geo location of outdoor AP	Verify that user is able to exporting the ap location or not	Passed	
WLJPI34S_Reg_333	Importing the geo location of outdoor ap	Verify that user is able to importing the ap location or not	Passed	

WLJPI34S_Reg_334	Locating the client on map that are associated with outdoor ap	Verify that user is able to locate client on maps after connected with outdoor ap	Passed	
WLJPI34S_Reg_335	Placing the ap of different location and locating via GPS	Verify that user is able to locate the ap after placing at different location or not	Passed	

Config Wireless

Logical ID	Title	Description	Status	Defect ID
WLJPI34S_CWL_01	Disabling/enabling the scheduled saved report in PI	To check whether scheduled saved report can be enabled or not in PI once it is disabled	Failed	CSCvi69977
WLJPI34S_CWL_03	Adding the Mobility Express in PI with 3 or more DHCP scope in it	To check whether ME can be added successfully or not in PI when ME contains 3 or more DHCP scope	Failed	CSCvi92948
WLJPI34S_CWL_04	Configuring the AP dot1x credentials after disabling the password policy in PI	To check whether AP dot1x credentials can be configured or not without matching the Password policy in PI	Failed	CSCvj03970
WLJPI34S_CWL_05	Adding the AP Onboarding profile in PI UI	To check whether AP Onboarding profile can be added or not in PI UI	Failed	CSCvj08799
WLJPI34S_CWL_06	Adding the interfaces for Routers/Switches in PI while logged via Japanese/Korean GUI	To check whether interfaces can be added or not for Routers/Switches in PI while logged via Japanese/Korean GUI	Passed	

WLJPI34S_CWL_07	Checking the APIC EM dashboard navigations in PI	To check whether dashboard of APIC EM gets redirected or not as options available in PI	Passed	
WLJPI34S_CWL_08	Checking the Quick filter option under AVC capable device in PI Japanese UI	To check whether quick filter option gets applied or not under AVC capable devices in PI Japanese login	Passed	
WLJPI34S_CWL_09	Checking the help page in AVC profile	To check whether help page gets redirected or not in AVC profile	Passed	
WLJPI34S_CWL_10	Checking the wireless health page in Health rule in PI	To check whether wireless health page gets loaded or not in health rule in PI UI	Passed	
WLJPI34S_CWL_11	Checking the WAN and SP health trend tab under PfR monitoring in PI	To check whether WAN and SP Health Trend tab gets loaded or not under PfR monitoring page in PI	Passed	
WLJPI34S_CWL_12	Creating the Application under other category by default in PI	To check whether Application can be created or not under create application by default "other category" in PI	Passed	
WLJPI34S_CWL_13	Checking the Advanced Filter option in PI Japanese UI	To check whether Advanced Filter Option is working or not in PI Japanese UI	Passed	
WLJPI34S_CWL_14	Checking the Software Image Management Job Result in PI Japanese UI	To check whether Software Image Management Job Result is shown or not in PI Japanese UI	Passed	

WLJPI34S_CWL_15	Adding the Members in Mobility Services>Mobility Domains in Japanese P	To check whether Members able to add or in Mobility Services under Mobility Domains in Japanese PI UI	Passed	
-----------------	--	---	--------	--



CHAPTER 5

Related Documents

- [Related Documentation](#), on page 73

Related Documentation

Cisco Prime Infrastructure 3.4 Release Notes

https://www.cisco.com/c/en/us/td/docs/net_mgmt/prime/infrastructure/3-4/release/notes/cpi_m.html

Cisco Prime Infrastructure 3.4 Quick Start Guide

https://www.cisco.com/c/en/us/td/docs/net_mgmt/prime/infrastructure/3-4/quickstart/guide/bk_Cisco_Prime_Infrastructure_3_4_0_Quick_Start_Guide.html

Cisco Prime Infrastructure 3.4 Admin guide

https://www.cisco.com/c/en/us/td/docs/net_mgmt/prime/infrastructure/3-4/admin/guide/bk_CiscoPrimeInfrastructure_3_4_AdminGuide/bk_CiscoPrimeInfrastructure_3_4_AdminGuide_chapter_0100.html

Cisco CMX Configuration Guide, Release 10.4

https://www.cisco.com/c/en/us/td/docs/wireless/mse/10-4/cmxcfg/b_cg_cmxc104/getting_started_with_cisco_cmx.html

Cisco Mobility Express User Guide, Cisco Wireless Release 8.7

https://www.cisco.com/c/en/us/td/docs/wireless/access_point/mob_exp87/user_guide/b_ME_User_Guide_87.html

Cisco Wireless Controller Configuration Guide, Release 8.7

https://www.cisco.com/c/en/us/td/docs/wireless/controller/8-7/config-guide/b_cg87/monitoring_cisco_wlc.html

