



Test Results Summary for Cisco Wireless LAN Controller AireOS 7.6/ IOS XE 3.3 for Japan (Release Version AireOS 7.6.100.0/ IOS XE 3.3.1.SE)

First Published: October 21, 2013

Last Modified: April 07, 2014

Americas Headquarters

Cisco Systems, Inc.
170 West Tasman Drive
San Jose, CA 95134-1706
USA
<http://www.cisco.com>
Tel: 408 526-4000
800 553-NETS (6387)
Fax: 408 527-0883



CONTENTS

CHAPTER 1

Overview 1

Cisco Wireless LAN Solution Test 1

CHAPTER 2

Test Topology and Environment Matrix 5

Test Topology 6

Environment Matrix 7

What's New ? 9

Regression Features 9

Open Caveats 10

Resolved Caveats 10

CHAPTER 3

New Features - Test Summary 13

App Visibility 13

TrustSec SXP 14

AP Neighbour 15

802.11w - 5760 WLC 15

802.11r - 5760 WLC 17

802.11 ac Q Domain 22

MSE Facebook Connector 22

wIPS Enhancement 23

CMX Visitor Management 26

Data Privacy 28

MSE HyperV 29

5760 HA AP SSO 30

CHAPTER 4

Regression Features - Test Summary 33

MSE Billboard 34

Link Aggregation Mode 54

NCS Maps	54
Roaming	55
Automation	56
Multiple RADIUS Server Per SSID	62
SR Test Cases	63
AAA	68
Secure FTP	68
L3 Security	69
Anyconnect VPN	70
Autonomous to LWAPP Migration	71
Backup And Restore of PI	71
Bonjour	72
BYOD	73
Dot1x and Web-Auth Support	78
Flexconnect Enhancements	79
High Availability - SR	80
High Availability	80
HREAP	82
L2 Security	82
MSE Location Analytics	83
NBAR	86
PI AVC	87
Adhoc Test Cases	88
NEC	90
SSO	95
Application Visibility And Control	96
Local Policy	97
PI HA	98
HA on Cat 3850 switch	99
MSE HA	100
Fix verification	101
702 AP	101
Related Documentation	104



Overview

- [Cisco Wireless LAN Solution Test, page 1](#)

Cisco Wireless LAN Solution Test

Cisco Wireless LAN Solution Test, an integral part of the enterprise wireless solution, is a program that validates various Cisco Wireless Products and Features. This is achieved by testing the latest versions of Cisco wireless products.

Cisco Wireless LAN Solution Test for Japan, in turn is an add-on testing at the solution level, where the requirements gathered are specific to Japanese usage and market. The requirements are derived based on the following:

- New features in 7.6
- Customer found defects in selected wireless products
- High priority scenarios and basic regression features
- Inputs from Cisco SEs/ TAC

The test execution is carried out on selected Cisco Wireless LAN products, which affect the Japanese segment that are prioritized by Cisco Japan team.

The following products are covered in the test execution:

- Cisco Wireless LAN Controller 5508
- Cisco Wireless LAN Controller 2500
- Cisco Wireless LAN Controller 5760
- Cisco Wireless LAN Flex Controller 7500
- Cisco Wireless LAN Flex Controller 8500
- Cisco Catalyst 3850 Switch
- WiSM2 Controller
- Virtual Controller

- Access Point 3500
- Access Point 1042
- Access Point 1142
- Access Point 1262
- Access Point 3600
- Access Point 2600
- Access Point 1600
- Access Point 702
- Cisco OEAP 602
- Cisco Prime Network Control System
- Cisco Prime Infrastructure
- ISE Virtual Appliance
- Cisco Secure ACS
- Cisco Mobility Service Engine (MSE)
- Cisco AnyConnect VPN Client

Acronyms

Acronym	Description
AAA	Authentication Authorization and Accounting
ACL	Access Control List
ACS	Access Control Server
AKM	Authentication Key Management
AP	Access Point
AVC	Application Visibility and Control.
BBX	Billboard Exchange
BYOD	Bring Your Own Device
CA	Central Authentication
CAPWAP	Control and Provisioning of Wireless Access Point
CCKM	Cisco Centralized Key Management
CCX	Cisco Compatible Extensions
CDP	Cisco Discovery Protocol
CKIP	Cisco Key Integrity Protocol
CMX	Connected Mobile Experience

Acronym	Description
CVBF	Cisco Vector Beam Forming
DCA	Dynamic Channel Assignment
DNS	Domain Name System
DTIM	Delivery Traffic Indication Map
DSCP	Differentiated Services Code Point
DTLS	Datagram Transport Layer Security
EAP	Extensible Authentication Protocol
EULA	End User Licence Agreement
FLA	Flex Local Authentication
FLS	Flex Local Switching
FT	Fast Transition
FTP	File Transfer Protocol
FW	Firm Ware
HA	High Availability
H-REAP	Hybrid Remote Edge Access Point
IOS	Internetwork Operating System
ISE	Identity Service Engine
LAG	Link Aggregation
LEAP	Lightweight Extensible Authentication Protocol
LSS	Location Specific Services
LWAPP	Lightweight Access Point Protocol
MFP	Management Frame Protection
mDNS	multicast Domain Name System
MIC	Message Integrity Check
MSE	Mobility Service Engine
NAT	Network Address Translation
NBAR	Network Based Application Recognition
NCS	Network Control System
NGWC	Next Generation Wiring closet
NMSP	Network Mobility Services Protocol
OEAP	Office Extended Access Point

Acronym	Description
PEAP	Protected Extensible Authentication Protocol
PEM	Policy Enforcement Module
PI	Prime Infrastructure
PMF	Protected Management Frame
POI	Point of Interest
PPPoE	Point-to-Point Protocol over Ethernet
PSK	Pre-shared Key
RADIUS	Remote Authentication Dial-In User Service
RP	Redundancy Port
RRM	Radio Resource Management
SFTP	Secure File Transfer Protocol.
SNMP	Simple Network Management Protocol
SS	Spatial Stream
SSID	Service Set Identifier
SSO	Single Sign On
SSO	Stateful Switch Over
TACACS	Terminal Access Controller Access Control System
TCP	Transmission Control Protocol
TFTP	Trivial File Transfer Protocol.
TLS	Transport Layer Security
UDP	User Datagram Protocol
vWLC	Virtual Wireless LAN Controller
VPN	Virtual Private Network
WEP	Wired Equivalent Privacy
WGB	Workgroup Bridge
wIPS	Wireless Intrusion Prevention System
WiSM	Wireless Service Module
WLAN	Wireless LAN
WLC	Wireless LAN Controller
WPA	Wi-Fi Protected Access

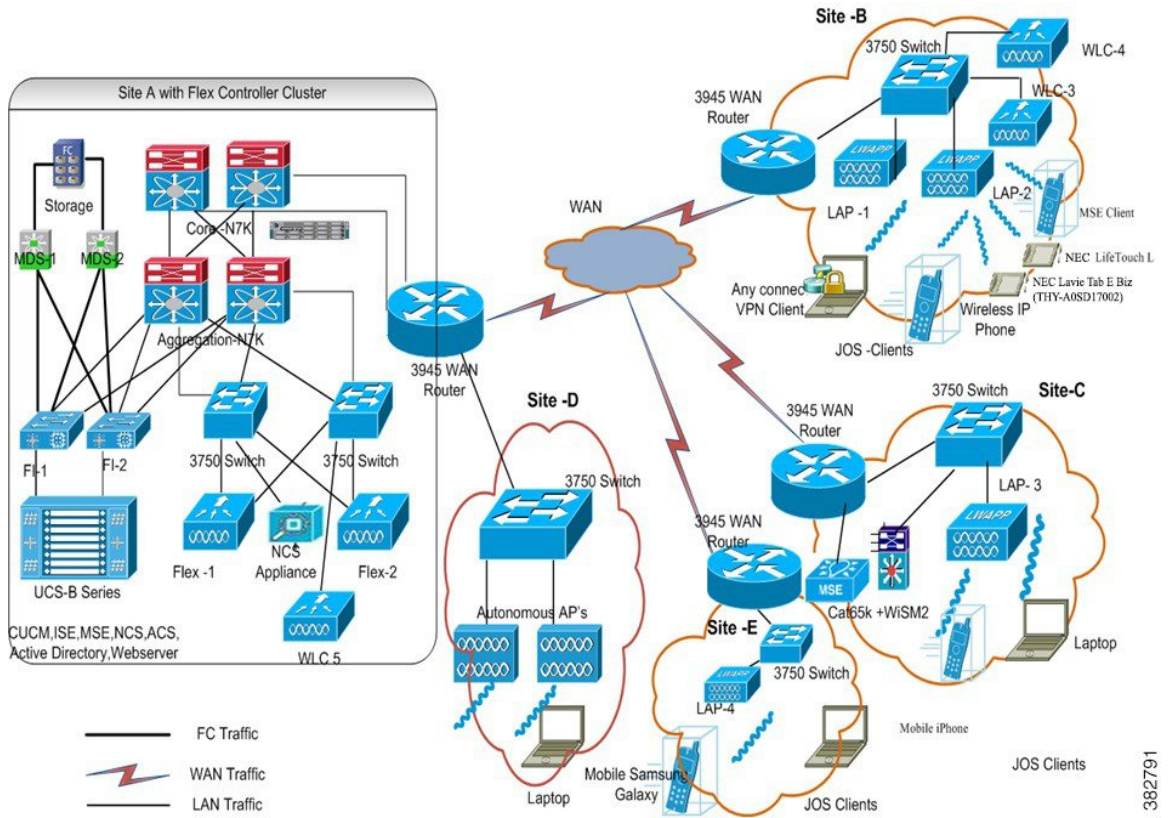


Test Topology and Environment Matrix

- [Test Topology, page 6](#)
- [Environment Matrix, page 7](#)
- [What's New ?, page 9](#)
- [Regression Features, page 9](#)
- [Open Caveats, page 10](#)
- [Resolved Caveats, page 10](#)

Test Topology

Figure 1: Topology in Use



382791

Environment Matrix

Category	Component	Version
Controller	Cisco Wireless LAN controller 5508	7.6.100.0 / 7.6.120.0
	Cisco Flex 7500 Series Wireless Controller	7.6.100.0 / 7.6.120.0
	Cisco 2500 Series Wireless Controller	7.6.100.0 / 7.6.120.0
	Cisco 8500 Series Wireless Controller	7.6.100.0 / 7.6.120.0
	Cisco Wireless Services Module 2 (WiSM2)	7.6.100.0 / 7.6.120.0
	Virtual controller	7.6.100.0
	Cisco NGWC 5760	3.3.1
Application	Cisco Prime Infrastructure (Physical, VM)	1.4.1.39
	Cisco Identity Services Engine (ISE) (VM)	1.2.0.899
	Cisco Secure Access Control system (ACS) (VM)	5.3.0.40
	Cisco Mobility Services Engine (MSE)	7.6.100.0
Call control	Cisco Unified Communications Manager	9.1.1.1000-1/9.1.1.1000-1(JP)
Access Point	Cisco Aironet 3500 series	15.2
	Cisco Aironet 3600 series	15.2
	Cisco Aironet 2600 series	15.2
	Cisco Aironet 1600 series	15.2
	Cisco Aironet 1042	15.2
	Cisco Aironet 1142	15.2
	Cisco Aironet 1262	15.2
	Cisco Aironet 600 Series OfficeExtend Access Point	15.2
	Cisco Aironet 700 Series	15.2

Category	Component	Version
Switch	Cisco Catalyst 3750V2 Switch	15.0(2)SE2
	Cisco Catalyst 6509-E Switch	15.1(1)SY1
	Cisco Catalyst 3850 Switch	3.3.1
Client	Operating System(Japanese)	Windows 7 Enterprise
		Windows 8 Enterprise
		Windows XP Professional
	Apple Mac Book Pro (Japanese Locale)	Mac OS 10.8.3
	iPhone 4 (Japanese Locale)	iOS6.1(10B144)
	iPhone 5 (Japanese Locale)	iOS6.0.2(10A551)
	Samsung Galaxy- S II (Japanese Locale)	2.3.3
	Wireless IP Phone 7921G (Japanese Locale)	1.4(2)
	Wireless IP Phone 7925G (Japanese Locale)	1.4(2)
	Wireless IP Phones 7926G (Japanese Locale)	1.4(2)
	NEC LifeTouch L (D000-000023-001)	Android 4.1.1
	NEC LifeTouch L (D000-000035-001)	Android 4.1.1
	NEC LaVie Tab E Biz (THY-A0SD17002)	Android 4.2.2
	Cisco AnyConnect VPN Client	3.1.04066 (For Windows 7 Enterprise)
3.1.04066 (For Apple Mac OS10.8.3)		
3.0.09156 (For Samsung Galaxy S-II)		
Chipset	5300, 6300 AGN	14.3.2.1
	Airport Extreme	6.2
Active Directory	AD	Windows 2008R2Enterprise

Category	Component	Version
Browsers	Internet Explorer	8,9,10
	opera	11.5
	Mozilla Firefox	24
	Safari	5.0.4
	Chrome	29

What's New ?

- App Visibility with G2 11n APs
- TrustSec SXP and SGT
- AP neighbor list (Subset of 802.11k)
- 802.11w and 802.11r in 5760 WLC
- MSE FaceBook Connector
- 802.11 ac Q Domain
- wIPS Enhancement
- CMX Visitor Management and Data Privacy
- MS HyperV support
- HA - AP SSO With stacking cable

Regression Features

- Layer 3 Security
- Layer 2 Security
- PI Maps
- Autonomous to LWAPP Migration
- Link Aggregation Mode
- High Availability
- Roaming
- AAA
- FlexConnect Enhancements
- H-REAP fault tolerance
- Anyconnect VPN

- Dot1x and WEB-Auth Support
- Multiple RADIUS Server Per SSID
- Secure FTP
- Backup and restore of PI
- NBAR
- Upgrade
- TAC SR Case

Open Caveats

Defect ID	Defect Title	Product
CSCuj40828	Error message shown when configuring DCA Parameters in Katana GUI	WLC
CSCuj94459	Deal banner wrongly shows tablet/desktop image for mobile devices	MSE
CSCuj98888	Win7Client as SoftAP isn't reflected in PI's Client Classification Dashlet	MSE
CSCuj99094	Device using shared key Authentication(ID:65) Alarm isn't triggered	MSE
CSCum02265	Banner hidden on top page and displayed after scroll down	MSE
CSCum02327	MSE address is displayed even after setting DNS server, result is same	MSE
CSCul09345	Alarm "Device unprotected by EAP-FAST (ID:105)" not detected by MSE	MSE
CSCum12763	Secondary MSE is not active when Primary is shutdown	MSE
CSCum42561	Clicking Active links on dashboard does not redirect to report	MSE
CSCum11215	Able to delete system created roles	MSE

Resolved Caveats

Defect ID	Defect Title	Product
CSCuj78957	Analytics reports page shows unconfigured zone	MSE

Defect ID	Defect Title	Product
CSCuj83130	Banner image has changes is reflecting even when the changes done on image is cancelled	MSE
CSCum65868	In GUI Unable to clear the DNS IP once it is set in the AP static config	WLC



New Features - Test Summary

- [App Visibility, page 13](#)
- [TrustSec SXP, page 14](#)
- [AP Neighbour, page 15](#)
- [802.11w - 5760 WLC, page 15](#)
- [802.11r - 5760 WLC, page 17](#)
- [802.11 ac Q Domain, page 22](#)
- [MSE Facebook Connector, page 22](#)
- [wIPS Enhancement, page 23](#)
- [CMX Visitor Management, page 26](#)
- [Data Privacy, page 28](#)
- [MSE HyperV, page 29](#)
- [5760 HA AP SSO, page 30](#)

App Visibility

Logical ID	Title	Description	Status	Defects
WLJ76S_NBAR_01	Creating netflow in CLI	To configure the netflow by CLI	Passed	
WLJ76S_NBAR_02	NBAR functionality with AP local mode	To verify the NBAR functionality with AP local mode	Passed	
WLJ76S_NBAR_04	NBAR functionality with b/g Radio policy	To verify the NBAR functionality with b/g radio policy	Passed	

Logical ID	Title	Description	Status	Defects
WLJ76S_NBAR_05	NBAR functionality with a Radio policy	To verify the NBAR functionality with a radio policy	Passed	
WLJ76S_NBAR_06	Disabling the AVC in WLAN	To verify the AVC disable by GUI	Passed	
WLJ76S_NBAR_07	Creating a Flow Exporter	To configure the flow exporter by using CLI	Passed	
WLJ76S_NBAR_08	Verification of AVC monitoring with 5760	To verify the AVC monitoring	Passed	
WLJ76S_NBAR_09	Verification of AVC monitoring with 3850	To verify the AVC monitoring	Passed	

TrustSec SXP

Logical ID	Title	Description	Status	Defects
WLJ76S_SXP_01	Setting up trust sxp connection with 3850 using password	To verify the sxp connection status with switch	Passed	
WLJ76S_SXP_02	Setting up trust sxp connection with 5760 using password	To verify the sxp connection status with switch	Passed	
WLJ76S_SXP_03	Setting up trust sxp connection with 3850	To verify the sxp connection status with switch	Passed	
WLJ76S_SXP_04	Setting up trust sxp connection with 5760	To verify the sxp connection status with switch	Passed	
WLJ76S_SXP_05	Verification of traffic between two clients	To verify the traffic between two clients	Passed	
WLJ76S_SXP_06	SXP Connection Status with Switch	To verify the sxp connection status with switch	Passed	
WLJ76S_SXP_07	SXP connection Traffic between two clients	To verify the traffic between two clients	Passed	

AP Neighbour

Logical ID	Title	Description	Status	Defects
WLJ76S_APNei_01	Configuring AP neighbor list	To verify the AP neighbor configuration by CLI	Passed	
WLJ76S_APNei_02	AP neighbor list clients roaming	To verify the AP neighbor list enabled clients roaming status	Passed	
WLJ76S_APNei_03	Traffic between two clients	To verify the traffic between two clients	Passed	

802.11w - 5760 WLC

Logical ID	Title	Description	Status	Defects
WLJ76S_11w_01	Enabling MFP in WLC CLI	To verify whether MFP is enabled or not in WLC GUI through CLI for a WLAN	Passed	
WLJ76S_11w_02	Enabling MFP in a WLAN with L2 Security "WPA2-PSK and PMF"and associating a Client(Win8)	To verify whether MIC is present or not in Management Frames during client association with L2 Security-WPA2+PSK	Passed	
WLJ76S_11w_03	Enabling MFP in a WLAN with L2 Security "WPA2-PSK and PMF"and associating a Client(Win7).	To verify whether MIC is present or not in Management Frames during client association with L2 Security-WPA2+PSK and PMF	Passed	
WLJ76S_11w_04	Enabling PMF in WLC CLI	To verify whether PMF is enabled or not for a WLAN through WLC CLI	Passed	
WLJ76S_11w_05	Enabling MFP in a WLAN with L2 Security "WPA2-Dot1x and PMF"and associating a Client(Win8)	To verify whether MIC is present or not in Management Frames during client association with L2 Security-WPA2+Dot1x and PMF	Passed	

Logical ID	Title	Description	Status	Defects
WLJ76S_11w_06	Enabling MFP in a WLAN with L2 Security "WPA2-Dot1x and PMF" and associating a Client(Win7).	To verify whether MIC is present or not in Management Frames during client association with L2 Security-WPA2+Dot1x and PMF	Passed	
WLJ76S_11w_07	Associating two clients(Win7 and Win8)to a WLAN with L2 Security "WPA2-Dot1x and PMF".	To verify whether clients are associated or not with L2 Security-WPA2+Dot1x and PMF	Passed	
WLJ76S_11w_08	Associating two clients(Win7 and Win8)to a WLAN with L2 Security "WPA2-PSK and PMF".	To verify whether clients are associated or not with L2 Security-WPA2+PSK and PMF	Passed	
WLJ76S_11w_09	Associating two clients(Win7 and Win8)to a WLAN with L2 Security "WPA2-Dot1x and PMF" and checking the ping function between two clients.	To verify whether clients are associated or not with L2 Security-WPA2+Dot1x and PMF and check whether two clients able to ping each other	Passed	
WLJ76S_11w_10	Associating two clients(Win7 and Win8)to a WLAN with L2 Security "WPA2-PSK and PMF" and checking the ping function between two clients.	To verify whether clients are associated or not with L2 Security-WPA2+PSK and PMF and check whether two clients able to ping each other	Passed	

802.11r - 5760 WLC

Logical ID	Title	Description	Status	Defects
WLJ76S_11r_01	Enabling FT through WLC CLI	To verify whether FT in Layer 2 is enabled or not for a WLAN through WLC CLI	Passed	
WLJ76S_11r_02	Enabling FT through WLC GUI	To verify whether FT in Layer 2 is enabled or not for a WLAN through WLC GUI	Passed	
WLJ76S_11r_03	Associating a client (Win 7) to a WLAN with FT enabled.	To verify whether Win 7 client is connected or not with FT enabled WLAN.	Passed	
WLJ76S_11r_04	Associating a client (Apple MacBook pro) to a WLAN with FT enabled.	To verify whether MacBook client is connected or not with FT enabled WLAN.	Passed	
WLJ76S_11r_05	Associating two clients (Iphone & Samsung S2) to a WLAN with FT enabled.	To verify whether Iphone and S2 clients are connected or not with FT enabled WLAN.	Passed	
WLJ76S_11r_06	Enabling FT in PI for 5760 WLC and checking it in WLC GUI.	To verify whether FT in Layer 2 is enabled or not for a WLAN in 5760 WLC CLI from PI .	Passed	
WLJ76S_11r_07	Roaming a Win 7 client between 2 5760 WLC's.	To verify whether Win 7 client is roamed or not between 2 5760 WLC's.	Passed	
WLJ76S_11r_08	Roaming a MacBook client between 2 5760 WLC's.	To verify whether MacBook client is roamed or not between 2 5760 WLC's.	Passed	
WLJ76S_11r_09	Roaming a Samsung S2 client between 2 5760 WLC's.	To verify whether Samsung S2 client is roamed or not between 2 5760 WLC's.	Passed	

Logical ID	Title	Description	Status	Defects
WLJ76S_11r_10	Roaming a Apple Iphone client between 2 5760 WLC's.	To verify whether Apple Iphone client is roamed or not between 2 5760 WLC's.	Passed	
WLJ76S_11r_11	Roaming a Win 7 client between 2 5760 WLC's with Security "None".	To verify whether Win 7 client is roamed or not between 2 5760 WLC's with Security "None".	Passed	
WLJ76S_11r_12	Roaming a MacBook client between 2 5760 WLC's with Security "None".	To verify whether MacBook client is roamed or not between 2 5760 WLC's with Security "None".	Passed	
WLJ76S_11r_13	Roaming a Samsung S2 client between 2 5760 WLC's with Security "None".	To verify whether Samsung S2 client is roamed or not between 2 5760 WLC's with Security "None".	Passed	
WLJ76S_11r_14	Roaming a Iphone client between 2 5760 WLC's with Security "None".	To verify whether Iphone client is roamed or not between 2 5760 WLC's with Security "None".	Passed	
WLJ76S_11r_15	Associating 2 clients(Win 7 & MacBook) and roaming it between 2 5760 WLC's with L2 Security PSK	To verify whether clients(win 7 & MacBook) are roamed or not between 2 5760 WLC's.	Passed	
WLJ76S_11r_16	Associating 2 clients(Win 7 & MacBook) and roaming it between 2 5760 WLC's with L2 Security None.	To verify whether clients(win 7 & MacBook) are roamed or not between 2 5760 WLC's.	Passed	
WLJ76S_11r_17	Associating 2 clients(Win 7 & MacBook) and roaming it between 2 5760 WLC's with L2 Security "Wep".	To verify whether clients(win 7 & MacBook) are roamed or not between 2 5760 WLC's.	Passed	

Logical ID	Title	Description	Status	Defects
WLJ76S_11r_18	Associating 2 clients(Samsung S2 & Iphone) and roaming it between 2 5760 WLC's with L2 Security "None".	To verify whether clients(Samsung S2 & Iphone) are roamed or not between 2 5760 WLC's.	Passed	
WLJ76S_11r_19	Associating 2 clients(Samsung S2 & Iphone) and roaming it between 2 5760 WLC's with L2 Security "PSK".	To verify whether clients(Samsung S2 & Iphone) are roamed or not between 2 5760 WLC's.	Passed	
WLJ76S_11r_20	Associating 4 clients to a WLAN with L2 security "PSK" and with FT enabled.	To verify whether maximum number of clients are able to connect or not to a WLAN with L2 Security "PSK" and with FT enabled.	Passed	
WLJ76S_11r_21	Associating 4 clients to a WLAN with L2 security "PSK" and without enabling FT.	To verify whether maximum number of clients are able to connect or not to a WLAN with L2 Security "PSK" and without enabling FT.	Passed	
WLJ76S_11r_22	Associating a client (Win 8) to a WLAN with FT enabled.	To verify whether Win 8 client is connected or not with FT enabled WLAN.	Passed	
WLJ76S_11r_23	Roaming a Win 8 client between 2 5760 WLC's.	To verify whether Win 8 client is roamed or not between 2 5760 WLC's.	Passed	
WLJ76S_11r_24	Associating a client (Win 7) to a WLAN without enabling FT.	To verify whether Win 7 client is connected or not without enabling FT in a WLAN.	Passed	
WLJ76S_11r_25	Associating a client (MacBook) to a WLAN without enabling FT.	To verify whether MacBook client is connected or not without enabling FT in a WLAN.	Passed	

Logical ID	Title	Description	Status	Defects
WLJ76S_11r_26	Associating a client (Samsung S2) to a WLAN without enabling FT.	To verify whether Samsung S2 client is connected or not without enabling FT in a WLAN.	Passed	
WLJ76S_11r_27	Associating a client (Apple Iphone) to a WLAN without enabling FT.	To verify whether Iphone client is connected or not without enabling FT in a WLAN.	Passed	
WLJ76S_11r_28	Roaming a Win 7 client between 2 5760 WLC's without enabling FT.	To verify whether Win 7 client is roamed or not between 2 5760 WLC's without enabling FT	Passed	
WLJ76S_11r_29	Roaming a MacBook client between 2 5760 WLC's without enabling FT.	To verify whether MacBook client is roamed or not between 2 5760 WLC's without enabling FT	Passed	
WLJ76S_11r_30	Roaming a Samsung S2 client between 2 5760 WLC's without enabling FT.	To verify whether Samsung S2 client is roamed or not between 2 5760 WLC's without enabling FT	Passed	
WLJ76S_11r_31	Roaming a Iphone client between 2 5760 WLC's without enabling FT.	To verify whether Iphone client is roamed or not between 2 5760 WLC's without enabling FT	Passed	
WLJ76S_11r_32	Associating a client (Win 8) to a WLAN without enabling FT.	To verify whether Win 8 client is connected or not without enabling FT in a WLAN.	Passed	
WLJ76S_11r_33	Roaming a Win 8 client between 2 5760 WLC's without enabling FT.	To verify whether Win 8 client is roamed or not between 2 5760 WLC's without enabling FT	Passed	
WLJ76S_11r_34	Associating 2 clients(Win 7 & Win 8) and roaming it between 2 5760 WLC's with L2 Security PSK	To verify whether clients(win 7 & Win 8) are roamed or not between 2 5760 WLC's.	Passed	

Logical ID	Title	Description	Status	Defects
WLJ76S_11r_35	Associating 2 clients(Win 8 & MacBook) and roaming it between 2 5760 WLC's with L2 Security PSK	To verify whether clients(win 8 & MacBook) are roamed or not between 2 5760 WLC's.	Passed	
WLJ76S_11r_36	Associating 2 clients(Win 8 & MacBook) and roaming it between 2 5760 WLC's with L2 Security None.	To verify whether clients(win 8 & MacBook) are roamed or not between 2 5760 WLC's.	Passed	
WLJ76S_11r_37	Associating 2 clients(Win 8 & Win7) and roaming it between 2 5760 WLC's with L2 Security None.	To verify whether clients(win 8 & Win7) are roamed or not between 2 5760 WLC's.	Passed	
WLJ76S_11r_38	Associating a client (Win7) to a WLAN with FT enabled and roaming it between 2 5760 WLC's with 2 3600 AP's.	To verify whether client (Win7) is roamed or not between 2 5760 WLC's with 2 3600 AP's.	Passed	
WLJ76S_11r_39	Associating a client (MacBook) to a WLAN with FT enabled and roaming it between 2 5760 WLC's with 2 3500 AP's.	To verify whether client (MacBook) is roamed or not between 2 5760 WLC's with 2 3500 AP's.	Passed	
WLJ76S_11r_40	Associating a client (Win 8) to a WLAN with FT enabled and roaming it between 2 5760 WLC's with 2 3600 AP's.	To verify whether client (Win8) is roamed or not between 2 5760 WLC's with 2 3600 AP's.	Passed	

802.11 ac Q Domain

Logical ID	Title	Description	Status	Defects
WLJ76S_11AC_01	11ac module functioning in Katana(CT5760)	To verify whether AP3600 with Xale module is showing 11ac radio up in Katana with the supported image	Passed	
WLJ76S_11AC_02	11ac module functioning in Edison(CAT3850)	To verify whether AP3600 with Xale module is showing 11ac radio up in Edison with the supported image	Passed	
WLJ76S_11AC_05	Downgrade/Upgrade image of katana to check 11ac radio functionality	To verify whether 11ac radio is functioning accordingly when image is downgraded / upgraded	Passed	
WLJ76S_11AC_06	Downgrade/Upgrade image of Edison to check 11ac radio functionality	To verify whether 11ac radio is functioning accordingly when image is downgraded / upgraded	Passed	
WLJ76S_11AC_07	Maximum number of WLANs for AP3600 with Xale module	To verify the maximum number of WLAN support for Xale and if exceeded the limits shows warning	Passed	
WLJ76S_11AC_08	Maximum number of WLANs for AP3600 with Xale module	To verify the maximum number of WLAN support for Xale and if exceeded the limits shows warning	Passed	

MSE Facebook Connector

Logical ID	Title	Description	Status	Defects
WLJ76S_FB_01	Redirection to Facebook Page	To Verify redirection to facebook page for logging in is successful or not	Passed	
WLJ76S_FB_02	Authentication using facebook credentials	To Verify successful authentication using facebook credentials	Passed	
WLJ76S_FB_03	Authentication using WiFi Code	To Verify successful authentication using WiFi Code	Passed	

Logical ID	Title	Description	Status	Defects
WLJ76S_FB_04	Restricting free internet access for unauthenticated clients	To verify denial of internet access for unauthenticated users is successful or not	Passed	
WLJ76S_FB_05	Redirection for Continuing Browsing	To Verify Redirection to the page initially requested by the user is successful or not	Passed	
WLJ76S_FB_06	Show Logs tab	To Verify successful download of each individual log file listed in the show logs tab	Passed	
WLJ76S_FB_07	User data statistics	To verify whether the user's data statistics are displayed correctly or not	Passed	
WLJ76S_FB_08	KNOWN Users	To verify whether authenticated users are listed in the user data tab or not	Passed	
WLJ76S_FB_09	UNKNOWN Users	To verify whether users not authenticated are listed in the user data tab or not	Passed	
WLJ76S_FB_10	IN-AUTH Users	To verify whether users attempting to get authenticated are listed in the user data tab or not	Passed	

wIPS Enhancement

Logical ID	Title	Description	Status	Defects
WLJ76S_wIPS_01	SoftAP Detection Alarm	To Verify the Soft AP or host AP detected (ID:99) Alarm	Passed	
WLJ76S_wIPS_02	Improved UI - Client Classification Dashlet	To Verify Redirection to SoftAP Dashlet	Passed	
WLJ76S_wIPS_03	Improved UI - Client Classification Dashlet	To Verify Redirection to Valid Client with Rogue AP Dashlet	Passed	
WLJ76S_wIPS_04	Improved UI - Client Classification Dashlet	To Verify Redirection to Good Guy Gone Bad Dashlet	Passed	

Logical ID	Title	Description	Status	Defects
WLJ76S_wIPS_05	Valid Client on Rogue AP	To verify whether Valid Client on Rogue Ap's are detected	Passed	
WLJ76S_wIPS_06	Good Guy Gone Bad	To verify whether Good Guy Gone Bad are detected	Passed	
WLJ76S_wIPS_07	SoftAP	To verify whether SoftAPs are detected	Failed	CSCUj98888
WLJ76S_wIPS_08	Signature Update	To verify Air Drop Session detected (ID:213) Alarm	Passed	
WLJ76S_wIPS_09	Signature Update	To verify DHCP Starvation Attack detected (ID:215) Alarm	Passed	
WLJ76S_wIPS_10	Signature Update	To verify WiFi Protected Setup Pin brute force (ID:221) Alarm	Passed	
WLJ76S_wIPS_11	Signature Update - Static WEP encryption	To verify AP with encryption disabled (ID:0) Alarm	Passed	
WLJ76S_wIPS_12	Signature Update - Static WEP encryption	To verify Client with encryption disabled (ID:1) Alarm	Passed	
WLJ76S_wIPS_13	Signature Update - Static WEP encryption	To verify WEP IV key reused (ID:2) Alarm	Passed	
WLJ76S_wIPS_14	Signature Update - Static WEP encryption	To verify Device using open authentication (ID:7) Alarm	Passed	
WLJ76S_wIPS_15	Signature Update - Static WEP encryption	To verify Crackable WEP IV key used (ID:38) Alarm	Passed	
WLJ76S_wIPS_16	Signature Update - Static WEP encryption	To verify Device using shared key authentication (ID:65) Alarm	Failed	CSCUj99094
WLJ76S_wIPS_17	Signature Update - Performance Violation	To verify AP association capacity full (ID:9) Alarm	Passed	

Logical ID	Title	Description	Status	Defects
WLJ76S_wIPS_18	Signature Update - Performance Violation	To verify Excessive Bandwidth usage (ID:13) Alarm	Passed	
WLJ76S_wIPS_19	Signature Update - Performance Violation	To verify Excessive multicast/broadcast on channel (ID:34) Alarm	Passed	
WLJ76S_wIPS_20	Signature Update - Performance Violation	To verify AP overloaded by stations (ID:49) Alarm	Passed	
WLJ76S_wIPS_21	Signature Update - Performance Violation	To verify AP overloaded by utilization (ID:50) Alarm	Passed	
WLJ76S_wIPS_22	Signature Update - Performance Violation	To verify Excessive multicast/broadcast on node (ID:173) Alarm	Passed	
WLJ76S_wIPS_23	Signature Update - WPA and 802.11i	To verify Device unprotected by 802.1x (ID:41) Alarm	Passed	
WLJ76S_wIPS_24	Signature Update - WPA and 802.11i	To verify 802.1x rekey timeout too long (ID:51) Alarm	Passed	
WLJ76S_wIPS_25	Signature Update - WPA and 802.11i	To verify Device unprotected by TKIP (ID:68) Alarm	Passed	
WLJ76S_wIPS_26	Signature Update - WPA and 802.11i	To verify Device unprotected by PEAP (ID:72) Alarm	Passed	
WLJ76S_wIPS_27	Signature Update - WPA and 802.11i	To verify WPA or 802.11i pre-shared key used (ID:93) Alarm	Passed	
WLJ76S_wIPS_28	Signature Update - WPA and 802.11i	To verify 802.1x unencrypted broadcast or multicast (ID:96) Alarm	Passed	
WLJ76S_wIPS_29	Signature Update - WPA and 802.11i	To verify Device unprotected by EAP-FAST (ID:105) Alarm	Failed	CSCul09345
WLJ76S_wIPS_30	Signature Update - WPA and 802.11i	To verify Device unprotected by 802.11i /AES (ID:125) Alarm	Passed	

Logical ID	Title	Description	Status	Defects
WLJ76S_wIPS_31	Signature Update - WPA and 802.11i	To verify AP not protected by EAP-TLS (ID:186) Alarm	Passed	
WLJ76S_wIPS_32	Signature Update - WPA and 802.11i	To verify Device not using EAP-TTLS (ID:257) Alarm	Passed	

CMX Visitor Management

Logical ID	Title	Description	Status	Defects
WLJ76S_CMX_01	Creating Template Fields in CMX Dashboard	To verify created New Template Field is listed in the Splash Templates Tab	Passed	
WLJ76S_CMX_02	Editing Template Fields in CMX Dashboard	To verify whether Editing the existing Template Field in CMX Dashboard is successful or not	Passed	
WLJ76S_CMX_03	Deleting Template Fields in CMX Dashboard	To verify whether Deleting the existing Template Field in CMX Dashboard is successful or not	Passed	
WLJ76S_CMX_04	Creating Social Connectors in CMX Dashboard	To verify created New Social Connector is listed in the Splash Templates Tab	Passed	
WLJ76S_CMX_05	Editing Social Connectors in CMX Dashboard	To verify whether Editing the existing Social Connectors in CMX Dashboard is successful or not	Passed	
WLJ76S_CMX_06	Deleting Social Connectors in CMX Dashboard	To verify whether Deleting the existing Social Connectors in CMX Dashboard is successful or not	Passed	
WLJ76S_CMX_07	Creating Splash Templates in CMX Dashboard	To verify creation of New Splash Template	Passed	
WLJ76S_CMX_08	Editing Splash Templates in CMX Dashboard	To verify Editing the existing Splash Template	Passed	

Logical ID	Title	Description	Status	Defects
WLJ76S_CMX_09	Deleting Splash Templates in CMX Dashboard	To verify Deleting the existing Splash Template	Passed	
WLJ76S_CMX_10	Splash Templates assigned to the Social Connectors	To verify displaying of Splash Templates assigned to the Social Connectors	Passed	
WLJ76S_CMX_11	Assigning a Splash Template to a floor	To verify assignation of Splash Template to a Floor	Passed	
WLJ76S_CMX_12	Default User Groups	To verify whether Default User Groups are Displayed in CMX Dashboard or not	Passed	
WLJ76S_CMX_14	User Groups - Redirection of Client to Splash Page	To verify whether the client is redirected or not to the Splash Page	Passed	
WLJ76S_CMX_15	User Groups - Basic User	To verify whether Basic User is de-authenticated or not on exceeding 100 MB	Passed	
WLJ76S_CMX_16	User Groups -Social User	To verify whether Social User is de-authenticated or not on exceeding 500 MB	Passed	
WLJ76S_CMX_17	NMSP Message for De-auth	To verify whether the MSE issues NMSP Message for De-auth Packet or not	Passed	
WLJ76S_CMX_18	User Bandwidth	To verify that the Bandwidth is tracked or not when the Limit is set to Zero	Passed	
WLJ76S_CMX_19	Displaying New Visitors	To verify whether new Visitors are Displayed in the CMX Dashboard	Passed	
WLJ76S_CMX_20	Displaying Repeated Visitors	To verify whether repeated Visitors are Displayed in the CMX Dashboard	Passed	
WLJ76S_CMX_21	Displaying Active Visitors	To verify whether Active Visitors are Displayed in the CMX Dashboard	Passed	

Data Privacy

Logical ID	Title	Description	Status	Defects
WLJ76S_DP_01	Enabling Mac Scrambling in NCS GUI for MSE Northbound Notifications	To check whether Mac Scrambling is enabled or not for MSE through NCS GUI.	Passed	
WLJ76S_DP_02	Creating a Notification without enabling Mac Scrambling and checking the APIs.	To check whether Original MAC address is shown or not in APIs for a Notification in MSE through Wireshark.	Passed	
WLJ76S_DP_03	Creating a Notification with enabling Mac Scrambling and checking the APIs.	To check whether Original MAC address is hashed or not in APIs for a Notification in MSE through Wireshark.	Passed	
WLJ76S_DP_04	Creating a Notification for Facebook destination url.	To check whether Notification is created successfully or not with its destination status UP.	Passed	
WLJ76S_DP_05	Checking the destination status for a Notification by making the destination Down.	To check whether Destination status is Down or not when the destination URL is down.	Passed	
WLJ76S_DP_06	Creating a Notification for NCS destination url.	To check whether Notification is created successfully or not for NCS with its destination status UP.	Passed	
WLJ76S_DP_07	Creating a Notification for 2500 Controller.	To check whether Notification is created successfully or not for 2504 WLC.	Passed	
WLJ76S_DP_08	Creating a Notification for client to WLC which is added in NCS.	To check whether Notification is shown successfully or not for a client.	Passed	

MSE HyperV

Logical ID	Title	Description	Status	Defects
WLJ76S_HyperV_01	Backup MSE VA	To Verify whether Backup operation of MSE VA works properly	Passed	
WLJ76S_HyperV_02	Deploy Medium OVA for MSE VA	To Verify whether Medium OVA deployment operation for MSE VA works properly	Passed	
WLJ76S_HyperV_03	Increasing additional disk space on VA	To Verify MSE functionality after increasing disk space on VA works properly	Passed	
WLJ76S_HyperV_04	MSE VA with maximum CAS license	To Verify MSE VA works with maximum CAS license installed successfully	Passed	
WLJ76S_HyperV_05	MSE VA with maximum wIPS license	To Verify MSE VA works with maximum wIPS license installed successfully	Passed	
WLJ76S_HyperV_06	Check the alarm events for MSE in prime	To Verify whether alarms and events for MSE triggered in PI is displayed properly	Passed	
WLJ76S_HyperV_07	Monitoring clients and users	To Verify whether clients and users location, other details in PI is displayed properly	Passed	
WLJ76S_HyperV_08	Check Rogue AP location/history	To Verify whether Rogue AP location/history pages is shown correctly	Passed	
WLJ76S_HyperV_09	Services Synchronization History	To Verify if Services Synchronization History for various elements is shown correctly	Passed	

Logical ID	Title	Description	Status	Defects
WLJ76S_HyperV_10	Services Synchronize Services for Controllers	To Verify if Synchronize Services for Controllers reflects properly	Passed	
WLJ76S_HyperV_11	Services Synchronize Services for Network Designs	To Verify if Synchronize Services for Network Designs reflects properly	Passed	

5760 HA AP SSO

Logical ID	Title	Description	Status	Defects
WLJ76S_HA_01	Bringing 5760 HA Pair up	To verify whether High Availability has been established between CT5760 controllers	Passed	
WLJ76S_HA_02	Configuration sync between the controllers- CT5760	To verify whether configuration has been synced between Active and Standby controller	Passed	
WLJ76S_HA_03	Incremental Config sync between HA pair	To verify whether Incremental config were synchronized between the controllers which are in HA pair	Passed	
WLJ76S_HA_04	Bulk update sync between the controllers in HA pair	To verify whether bulk update is successful between the controllers which are in HA pair	Passed	
WLJ76S_HA_05	Download Image in the Active controller	To verify whether the image download in Active controller has been transferred successfully to the Standby-Hot controller	Passed	
WLJ76S_HA_06	Switchover trigger when Active is power off	To verify whether switchover has been triggered between the HA pair up when Active controller is powered off	Passed	

Logical ID	Title	Description	Status	Defects
WLJ76S_HA_07	Switchover trigger when "redundancy force-switchover" command is issued in Active CLI	To verify whether switchover has been triggered between the HA pair up when "redundancy force-switchover" is issued in Active WLC CLI	Passed	
WLJ76S_HA_08	Switchover trigger when Active Controller is reset	To verify whether switchover has been triggered between the HA pair when Active controller is reset.	Passed	
WLJ76S_HA_09	"Show redundancy states" command in CLI	To verify whether the command "show redundancy states" displays the output correctly via CLI	Passed	
WLJ76S_HA_10	Redundancy States display via GUI	To verify whether the redundancy states are displayed properly via GUI	Passed	
WLJ76S_HA_11	AP switchover when active 5760 controller fails- AP1042, AP1142	To verify whether AP get switchover to the new Active Controller seamlessly when Active controller fails	Passed	
WLJ76S_HA_12	AP switchover when active 5760 controller fails- AP3500, AP3600, AP2600	To verify whether AP get switchover to the new Active Controller seamlessly when Active controller fails	Passed	
WLJ76S_HA_13	Controller HA pair up with different software version	To check the role negotiation between the controllers with different software versions	Passed	
WLJ76S_HA_14	Switchover trigger when Active controller loses port connectivity	To verify whether Standby-Hot takes over the role of Active when Active controller loses its port connectivity	Passed	

Logical ID	Title	Description	Status	Defects
WLJ76S_HA_15	Client status during AP SSO after active failover- Open	To verify whether client gets disassociated and forced to rejoin to the controller after AP SSO	Passed	
WLJ76S_HA_16	Client status during AP SSO after active failover-WPA/WPA2/PSK	To verify whether client gets disassociated and forced to rejoin to the controller after AP SSO	Passed	
WLJ76S_HA_17	Client status during AP SSO after active failover- Static WEP	To verify whether client gets disassociated and forced to rejoin to the controller after AP SSO	Passed	
WLJ76S_HA_18	Client status during AP SSO after active failover- 802.1x	To verify whether client gets disassociated and forced to rejoin to the controller after AP SSO	Passed	
WLJ76S_HA_19	Client status during AP SSO after active failover- Web auth	To verify whether client gets disassociated and forced to rejoin to the controller after AP SSO	Passed	
WLJ76S_HA_20	Katana HA in PI	To verify the redundancy states are shown correctly in PI 2.x	Passed	



Regression Features - Test Summary

- [MSE Billboard, page 34](#)
- [Link Aggregation Mode , page 54](#)
- [NCS Maps , page 54](#)
- [Roaming , page 55](#)
- [Automation, page 56](#)
- [Multiple RADIUS Server Per SSID , page 62](#)
- [SR Test Cases, page 63](#)
- [AAA, page 68](#)
- [Secure FTP , page 68](#)
- [L3 Security , page 69](#)
- [Anyconnect VPN, page 70](#)
- [Autonomous to LWAPP Migration, page 71](#)
- [Backup And Restore of PI, page 71](#)
- [Bonjour, page 72](#)
- [BYOD, page 73](#)
- [Dot1x and Web-Auth Support , page 78](#)
- [Flexconnect Enhancements , page 79](#)
- [High Availability - SR, page 80](#)
- [High Availability, page 80](#)
- [HREAP , page 82](#)
- [L2 Security , page 82](#)
- [MSE Location Analytics, page 83](#)
- [NBAR , page 86](#)
- [PI AVC, page 87](#)

- [Adhoc Test Cases, page 88](#)
- [NEC, page 90](#)
- [SSO, page 95](#)
- [Application Visibility And Control, page 96](#)
- [Local Policy, page 97](#)
- [PI HA, page 98](#)
- [HA on Cat 3850 switch, page 99](#)
- [MSE HA, page 100](#)
- [Fix verification, page 101](#)
- [702 AP, page 101](#)
- [Related Documentation, page 104](#)

MSE Billboard

Logical ID	Title	Description	Status	Defects
WLJ76S_BBX_01	BBX Services after Installation from PI and CLI.	To Verify whether BBX Services after installation from PI and CLI is done.	Passed	
WLJ76S_BBX_02	Stop and start BBX services from PI.	To verify Stop and Start BBX services from PI.	Passed	
WLJ76S_BBX_03	Login to BBX through UI with default credentials.	To verify Login to BBX through UI with default credentials.	Passed	
WLJ76S_BBX_04	Create a banner for Offer	To verify whether Offer banner is created.	Passed	
WLJ76S_BBX_05	Create a banner for Sponsorship.	To verify whether Sponsorship banner is created.	Passed	
WLJ76S_BBX_06	Create a banner for Advertisement.	To verify whether Advertisement banner is created.	Passed	
WLJ76S_BBX_07	Create a banner for Deal.	To verify whether Deal banner is created.	Passed	

Logical ID	Title	Description	Status	Defects
WLJ76S_BBX_08	Create a banner for Welcome.	To verify whether Welcome banner is created.	Passed	
WLJ76S_BBX_09	Make banner Active.	To verify whether Make Active, activates the selected banner.	Passed	
WLJ76S_BBX_10	Make banner inactive.	To verify whether Make inactive, inactivates the selected banner	Passed	
WLJ76S_BBX_11	Edit the Existing banner.	To verify the Edit function of Existing banner.	Passed	
WLJ76S_BBX_12	Copy the Existing banner.	To verify the Copy function of Existing banner.	Passed	
WLJ76S_BBX_13	Change the account name while editing or copying the existing banner	To verify the Changing of account name while editing or copying the existing banner	Passed	
WLJ76S_BBX_14	Delete the Existing banner.	To verify the Deletion of Existing banner works properly	Passed	
WLJ76S_BBX_15	Preview the Existing banner.	To verify the Preview of Existing banner works properly	Passed	
WLJ76S_BBX_16	Banners - View the Existing banners.	To verify viewing of Existing banners is successful .	Passed	
WLJ76S_BBX_17	View the Active banners.	To verify viewing of Active banners is successful	Passed	
WLJ76S_BBX_18	View the Inactive banners.	To verify viewing of Inactive banners is successful	Passed	
WLJ76S_BBX_19	View All banners.	To verify viewing of all banners is successful.	Passed	

Logical ID	Title	Description	Status	Defects
WLJ76S_BBX_20	Paging feature for the Banners.	To Verify the paging feature for the Banners.	Passed	
WLJ76S_BBX_21	Customize the number of entries shown at a time.	To verify the customization of number of entries shown at a time	Passed	
WLJ76S_BBX_22	Search a banner.	To verify the Search option for a banner by entering the text works properly	Passed	
WLJ76S_BBX_23	Search for a banner with the keyword.	To verify the Search option for a banner with the keyword	Passed	
WLJ76S_BBX_24	Sync POIs from MSE	Checking the Synchronisation of POIs from MSE.	Passed	
WLJ76S_BBX_25	Add POIs to the existing floors pulled from MSE.	Checking the Adding function of POIs to the existing floors pulled from MSE works properly	Passed	
WLJ76S_BBX_26	Edit/Delete of existing Maps which was pulled from MSE.	To verify the Edit/Delete function of Existing Maps .	Passed	
WLJ76S_BBX_27	Edit/Delete of existing POIs which was pulled from MSE.	To verify the Edit/Delete function of existing POIs .	Passed	
WLJ76S_BBX_28	Re-sync of added POIs .	Re-synchronizing the added POIs to the existing floors pulled from MSE.	Passed	
WLJ76S_BBX_29	Assign a service category to POI.	To verify whether the service category is assigned to POI	Passed	

Logical ID	Title	Description	Status	Defects
WLJ76S_BBX_30	Service category on the mobile phone when user arrives at the POI.	To verify whether the service category on the mobile phone is displayed when user arrives at the POI.	Passed	
WLJ76S_BBX_31	Search for a POI with the keyword on the user browser.	To verify whether POI is listed when the keyword is entered in search option	Passed	
WLJ76S_BBX_32	Plot a Store on floor Navigation	To verify whether a Store plotted successfully or not.	Passed	
WLJ76S_BBX_33	Plotted store on the user browser.	To Verify whether the store is plotted or not on the user browser.	Passed	
WLJ76S_BBX_34	Draw Points on the Floor Map.	To verify whether the Points are drawn successfully on the Floor Map.	Passed	
WLJ76S_BBX_35	Draw Lines between 2 points on the Floor Map.	To verify whether the Lines are drawn successfully between 2 points on the Floor Map.	Passed	
WLJ76S_BBX_36	Create a single path with multiple draw points	To verify whether a single path is created with multiple draw points.	Passed	
WLJ76S_BBX_37	Create a multiple paths between source and destination.	To verify whether a multiple paths is created between source and destination.	Passed	
WLJ76S_BBX_38	Delete functionality for a draw point.	To verify whether the delete function works properly for a draw point	Passed	

Logical ID	Title	Description	Status	Defects
WLJ76S_BBX_39	Run the startover functionality.	To verify whether the startover function works properly or not.	Passed	
WLJ76S_BBX_40	Create a campaign with one active welcome banner.	To verify whether a campaign is created with one active welcome banner.	Passed	
WLJ76S_BBX_41	Create a campaign with multiple active "welcome banners"	To verify whether a campaign is created with multiple active "welcome banners".	Passed	
WLJ76S_BBX_42	Create a campaign for "welcome banner" with default rule.	To verify whether a campaign is created with multiple active "welcome banners" with default rule.	Passed	
WLJ76S_BBX_43	Create a campaign for "welcome banner" with rule - Applicable POIs.	To verify whether a campaign is created or not for "welcome banner" with rule - Applicable POIs.	Passed	
WLJ76S_BBX_44	Create a campaign for "welcome banner" with rule - Frequency = Always.	To verify whether a campaign is created or not for "welcome banner" with rule - Frequency = Always.	Passed	
WLJ76S_BBX_45	Create a campaign for "welcome banner" with rule - Frequency = Once.	To verify whether a campaign is created or not for "welcome banner" with rule - Frequency = Once	Passed	
WLJ76S_BBX_46	Create a campaign for "welcome banner" with rule - Frequency = Once than alternate message.	To verify whether a campaign is created or not for "welcome banner" with rule - Frequency = Once than alternate message.	Passed	

Logical ID	Title	Description	Status	Defects
WLJ76S_BBX_47	Create a campaign for "welcome banner" with multiple rules	To verify whether a campaign is created or not for "welcome banner" with multiple rules.	Passed	
WLJ76S_BBX_48	Edit the rule for "welcome banner".	To verify whether the rule is edited or not for "welcome banner".	Passed	
WLJ76S_BBX_49	Delete the rule for "welcome banner".	To verify whether the rule is deleted or not for "welcome banner".	Passed	
WLJ76S_BBX_50	Create a campaign with one active offer.	To verify whether a campaign is created successfully with one active offer.	Passed	
WLJ76S_BBX_51	Create a campaign with multiple active offers.	To verify whether a campaign is created successfully with multiple active offer.	Passed	
WLJ76S_BBX_52	Create a campaign for "offer banner" with default rule.	To verify whether a campaign is created successfully for "offer banner" with default rule.	Passed	
WLJ76S_BBX_53	Create a campaign for "offer banner" with rule - Frequency at POI.	To verify whether a campaign is created successfully or "offer banner" with rule - Frequency at POI.	Passed	
WLJ76S_BBX_54	Create a campaign for "offer banner" with rule - User Behavior = N/A.	To verify whether a campaign is created successfully for "offer banner" with rule - User Behavior = N/A.	Passed	
WLJ76S_BBX_55	Create a campaign for "offer banner" with multiple rules	To verify whether a campaign is created successfully for "offer banner" with multiple rules.	Passed	

Logical ID	Title	Description	Status	Defects
WLJ76S_BBX_56	Edit the rule for "offer banner".	To verify the Edit rule for "offer banner".	Passed	
WLJ76S_BBX_57	Delete the rule for "offer banner".	To verify the deletion of the rule for "offer banner".	Passed	
WLJ76S_BBX_58	Create a Campaign with one active "sponsorship".	To verify the Creation of a Campaign with one active "sponsorship".	Passed	
WLJ76S_BBX_59	Create a Campaign with multiple active "sponsorships".	To verify the Creation of a Campaign with multiple active "sponsorships".	Passed	
WLJ76S_BBX_60	Create a Campaign for "sponsorship banner" with default rule.	To verify Creation of a Campaign for "sponsorship banner" with default rule.	Passed	
WLJ76S_BBX_61	Create a Campaign for "sponsorship banner" with rule - Frequency at POI.	To verify the Creation of a Campaign for "sponsorship banner" with rule - Frequency at POI.	Passed	
WLJ76S_BBX_62	Campaigns - Create a Campaign for "sponsorship banner" with rule - User Behavior = N/A.	To verify the Creation of a Campaign for "sponsorship banner" with rule - User Behavior = N/A.	Passed	
WLJ76S_BBX_63	Campaigns - Create a Campaign for "sponsorship banner" with multiple rules	To verify the Creation of a Campaign for "sponsorship banner" with multiple rules.	Passed	
WLJ76S_BBX_64	Edit the rule for "sponsorship banner".	To verify the edition of rule for "sponsorship banner".	Passed	

Logical ID	Title	Description	Status	Defects
WLJ76S_BBX_65	Delete the rule for "sponsorship banner".	To verify Deletion of rule for "sponsorship banner" works properly	Passed	
WLJ76S_BBX_66	Create a Campaign with one active advertisement.	To verify the Creation of a Campaign with one active advertisement works properly	Passed	
WLJ76S_BBX_67	Create a Campaign with multiple active "advertisements".	To verify the Creation of a Campaign with multiple active "advertisements" is successful	Passed	
WLJ76S_BBX_68	Create a Campaign for "advertisements banner" with rule - any user.	To verify the Creation of a Campaign for "advertisements banner" with rule - any user is successful	Passed	
WLJ76S_BBX_69	Create a Campaign for "advertisements banner" with rule - By Dates.	To verify the Creation of a Campaign for "advertisements banner" with rule - By Dates is successful	Passed	
WLJ76S_BBX_70	Create a Campaign for "advertisements banner" with rule - By Days	To verify the Creation of a Campaign for "advertisements banner" with rule - By Days is successful	Passed	
WLJ76S_BBX_71	Create a Campaign for "advertisements banner" with rule - By Time	To verify the Creation of a Campaign for "advertisements banner" with rule - By Time is successful	Passed	

Logical ID	Title	Description	Status	Defects
WLJ76S_BBX_72	Create a Campaign for "advertisements banner" with rule - combination of date, day and time.	To verify the Creation of a Campaign for "advertisements banner" with rule - combination of date, day and time is successful	Passed	
WLJ76S_BBX_73	Create a Campaign for "advertisements banner" with multiple rules	To verify the Creation of a Campaign for "advertisements banner" with multiple rules is successful	Passed	
WLJ76S_BBX_74	Edit the rule for "advertisements banner".	To verify the Editing rule for "advertisements banner" works properly	Passed	
WLJ76S_BBX_75	Delete the rule for "advertisements banner".	To verify the deleting of rule for "advertisements banner" works properly	Passed	
WLJ76S_BBX_76	Create a Campaign with one active deal.	To verify the Creation a Campaign with one active deal is successful	Passed	
WLJ76S_BBX_77	Create a Campaign with multiple active "deals"	To verify the Creation of a Campaign with multiple active "deals" is successful	Passed	
WLJ76S_BBX_78	Campaigns - Create a Campaign for "deals banner" with rule - any user.	To Create a Campaign for "deals banner" with rule - any user is working properly	Passed	

Logical ID	Title	Description	Status	Defects
WLJ76S_BBX_79	Create a Campaign for "advertisements banner" with rule - By Dates.	To verify the creation of a Campaign for "advertisements banner" with rule - By Dates.	Passed	
WLJ76S_BBX_80	Create a Campaign for "advertisements banner" with rule - By Days	To verify the creation of a Campaign for "advertisements banner" with rule - By Days	Passed	
WLJ76S_BBX_81	Create a Campaign for "advertisements banner" with rule - By Time	To verify the creation of a Campaign for "advertisements banner" with rule - By Time.	Passed	
WLJ76S_BBX_82	Create a Campaign for "advertisements banner" with rule - combination of date, day and time.	To verify the creation of a Campaign for "advertisements banner" with rule - combination of date, day and time.	Passed	
WLJ76S_BBX_83	Create a Campaign for "advertisements banner" with multiple rules	To verify the creation of a Campaign for "advertisements banner" with multiple rules.	Passed	
WLJ76S_BBX_84	Edit the rule for "advertisements banner".	To verify the Editing rule for "advertisements banner".	Passed	
WLJ76S_BBX_85	Delete the rule for "advertisements banner".	To verify the deletion of rule for "advertisements banner".	Passed	
WLJ76S_BBX_86	Create a Campaign with one active deal.	To verify the creation of a Campaign with one active deal.	Passed	

Logical ID	Title	Description	Status	Defects
WLJ76S_BBX_87	Create a Campaign with multiple active "deals"	To verify the creation of a Campaign with multiple active "deals"	Passed	
WLJ76S_BBX_88	Campaigns - Create a Campaign for "deals banner" with rule - any user.	To verify the creation of a Campaign for "deals banner" with rule - any user.	Passed	
WLJ76S_BBX_89	Create a Campaign for "deals banner" with rule - By Dates.	To verify the creation of a Campaign for "deals banner" with rule - By Dates.	Passed	
WLJ76S_BBX_90	Create a Campaign for "deals banner" with rule - By Days	To verify the creation of a Campaign for "deals banner" with rule - By Days.	Passed	
WLJ76S_BBX_91	Create a Campaign for "deals banner" with rule - By Time	To verify the creation of a Campaign for "deals banner" with rule - By Time.	Passed	
WLJ76S_BBX_92	Create a Campaign for "deals banner" with rule - combination of date, day and time.	To verify the creation of a Campaign for "deals banner" with rule - combination of date, day and time.	Passed	
WLJ76S_BBX_93	Create a Campaign for "deals banner" with rule - Frequency Type = Minutes.	To verify the creation of a Campaign for "deals banner" with rule - Frequency Type = Minutes.	Passed	
WLJ76S_BBX_94	Create a Campaign for "deals banner" with rule - Frequency Type = Hours.	To verify the creation of a Campaign for "deals banner" with rule - Frequency Type = Hours.	Passed	

Logical ID	Title	Description	Status	Defects
WLJ76S_BBX_95	Create a Campaign for "deals banner" with rule - Frequency Type = Days.	To verify the creation of a Campaign for "deals banner" with rule - Frequency Type = Days.	Passed	
WLJ76S_BBX_96	Create a Campaign for "deals banner" with multiple rules	To verify the creation of a Campaign for "deals banner" with multiple rules.	Passed	
WLJ76S_BBX_97	Edit the rule for "deals banner".	To verify the Editing of rule for "deals banner".	Passed	
WLJ76S_BBX_98	Delete the rule for "deals banner".	To verify the deletion of rule for "deals banner".	Passed	
WLJ76S_BBX_99	Create a Campaign with all setups.	To verify the creation of a Campaign with all setups.	Passed	
WLJ76S_BBX_100	Create a Campaign with multiple POIs	To verify the creation of a Campaign with multiple POIs	Passed	
WLJ76S_BBX_101	Create a Campaign by Active Period.	To verify the creation of a Campaign by Active Period.	Passed	
WLJ76S_BBX_102	Create a Campaign by Satisfying any rule.	To verify the creation of a Campaign by Satisfying any rule.	Passed	
WLJ76S_BBX_103	Create a Campaign by Satisfying All rules.	To verify the creation of a Campaign by Satisfying All rules.	Passed	
WLJ76S_BBX_104	Make Campaign Active.	To verify if the Campaigns are made Active.	Passed	
WLJ76S_BBX_105	Make Campaign Inactive.	To verify if the Campaigns are made Inactive.	Passed	

Logical ID	Title	Description	Status	Defects
WLJ76S_BBX_106	Edit the existing Campaign	To verify the Editing of the existing Campaign.	Passed	
WLJ76S_BBX_107	Delete the existing Campaign.	To verify the deleting of existing Campaign.	Passed	
WLJ76S_BBX_108	Preview the existing Campaign.	To verify the Preview of existing Campaign.	Passed	
WLJ76S_BBX_109	View the existing Campaigns.	To verify if the existing Campaigns are viewed properly.	Passed	
WLJ76S_BBX_110	View Active Campaigns.	To verify whether the Active Campaigns are viewed.	Passed	
WLJ76S_BBX_111	View Inactive Campaigns.	To verify whether the Inactive Campaigns are viewed.	Passed	
WLJ76S_BBX_112	View All Campaigns.	To verify whether the All Campaigns are viewed properly.	Passed	
WLJ76S_BBX_113	Paging feature for Campaigns.	To verify the paging feature for Campaigns.	Passed	
WLJ76S_BBX_114	Customize the number of entries to show at a time.	To verify Customization of the number of entries to show at a time.	Passed	
WLJ76S_BBX_115	Search a Campaign.	To verify the Campaign search works properly.	Passed	
WLJ76S_BBX_116	Publish an active Campaign with one POI and valid date.	To verify the Publish an active Campaign with one POI and valid date.	Passed	

Logical ID	Title	Description	Status	Defects
WLJ76S_BBX_117	Publish an active Campaign with multiple POIs and valid date.	To verify the Publish an active Campaign with multiple POIs and valid date.	Passed	
WLJ76S_BBX_118	Publish an active Campaign with Expired date.	To verify the Publish an active Campaign with Expired date.	Passed	
WLJ76S_BBX_119	Publish an active Campaign with the rule - any user.	To verify the Publish an active Campaign with the rule - any user.	Passed	
WLJ76S_BBX_120	Publish an active Campaign with the rule - Day and Time.	To verify the Publish an active Campaign with the rule - Day and Time.	Passed	
WLJ76S_BBX_121	Publish an active Campaign with multiple messages defined.	To verify the Publish an active Campaign with multiple messages defined.	Passed	
WLJ76S_BBX_122	Publish an active Campaign and launch the URL which is blacklisted.	To verify the Publish an active Campaign and launch the url which is blacklisted.	Passed	
WLJ76S_BBX_123	Listing of Default Menus	To Verify the default menus are listed properly.	Passed	
WLJ76S_BBX_124	Create a new menu category.	To verify the creation of a new menu category.	Passed	
WLJ76S_BBX_125	Create a new service under the menu category.	To verify the creation of a new service under the menu category.	Passed	
WLJ76S_BBX_126	Make service item active.	To verify if the service item is made active.	Passed	

Logical ID	Title	Description	Status	Defects
WLJ76S_BBX_127	Make service item inactive.	To verify if the service item is made inactive.	Passed	
WLJ76S_BBX_128	Edit a service item under menu category.	To verify the Editing a service item under menu category.	Passed	
WLJ76S_BBX_129	Delete a service item under menu category.	To verify the deletion a service item under menu category.	Passed	

Logical ID	Title	Description	Status	Defects
WLJ76S_BBX_130	Publish an active Campaign by satisfying any of the rules.	To verify Publish an active Campaign by satisfying any of the rules.	Passed	
WLJ76S_BBX_131	Publish an active Campaign by satisfying all of the rules.	To verify the Publish an active Campaign by satisfying all of the rules.	Passed	
WLJ76S_BBX_132	Check the URL defined in menu under service items navigate properly	To verify the target URLs for "service items" under menu category when user clicked.	Passed	
WLJ76S_BBX_133	Menu category is created with Display Style as Grid for service items	To verify "service items" in Grid when menu category is created with Display Style as Grid.	Passed	
WLJ76S_BBX_134	Menu category is created with Display Style as list for service items	To verify "service items" in list when menu category is created with Display Style as list	Passed	
WLJ76S_BBX_135	"Map" functionality in user browser when there is only one path from source to destination.	To verify "Map" functionality in user browser when there is only one path from source to destination.	Passed	

Logical ID	Title	Description	Status	Defects
WLJ76S_BBX_136	"Map" functionality in user browser when there are multiple paths between source and destination.	To verify "Map" functionality in user browser when there are multiple paths between source and destination.	Passed	
WLJ76S_BBX_137	Customize the Ad appearance Display as Always	To verify Customization of the Ad appearance Display as Always	Passed	
WLJ76S_BBX_138	Customize the Ad appearance Display as on-demand	To verify Customization of the Ad appearance Display as on-demand	Passed	
WLJ76S_BBX_139	Customize the Ad appearance as in top position	To verify Customization of the Ad appearance as in top position	Passed	
WLJ76S_BBX_140	Customize the Ad appearance as in bottom position	To verify Customization of the Ad appearance as in bottom position	Passed	
WLJ76S_BBX_141	Customize the Ad appearance by Background Color.	To verify Customization of the Ad appearance by Background Color.	Passed	
WLJ76S_BBX_142	Customize the Ad appearance by Logo.	To verify Customization of the Ad appearance by Logo	Failed	CSCuj94459
WLJ76S_BBX_143	The complete view of dashboard.	To verify the complete view of dashboard.	Passed	
WLJ76S_BBX_144	Check the active links on dashboard.	To Verify the active links on dashboard.	Failed	CSCum42561
WLJ76S_BBX_145	Cross launch to Analytics from BBX	To Verify the cross launch to Analytics from BBX	Passed	
WLJ76S_BBX_146	check the default roles created by the system.	To verify the default roles created by the system.	Passed	

Logical ID	Title	Description	Status	Defects
WLJ76S_BBX_147	Create a new role.	To verify the Created a new role.	Passed	
WLJ76S_BBX_148	Edit an existing role.	To verify the Edit an existing role.	Passed	
WLJ76S_BBX_149	Delete a user created role.	To verify the deleting function of a user created role.	Passed	
WLJ76S_BBX_150	Delete a system created role.	To verify the delete a system created role.	Failed	CSCum11215
WLJ76S_BBX_151	Delete a role which is already assigned to an account or user.	To verify the delete a role which is already assigned to an account or user.	Passed	
WLJ76S_BBX_152	The paging feature for the Roles.	To verify the paging feature for the Roles.	Passed	
WLJ76S_BBX_153	Customize the number of entries to show at a time.	To verify the Customization for number entries to show at a time.	Passed	
WLJ76S_BBX_154	Search for a Role.	To verify the Searching for a Role.	Passed	
WLJ76S_BBX_155	Create a new account	To verify the Created a new account	Passed	
WLJ76S_BBX_156	Add a user to an account.	To verify the Add a user to an account.	Passed	
WLJ76S_BBX_157	Add multiple users to an account.	To verify the adding of multiple users to an account.	Passed	
WLJ76S_BBX_158	Make User Active for selected user	To verify the "Make User Active" works for selected user	Passed	
WLJ76S_BBX_159	Edit User details.	To verify the editing of selected user details.	Passed	
WLJ76S_BBX_160	Delete a user from an account.	To verify the Deletion of a user from an account.	Passed	
WLJ76S_BBX_161	View Existing "users" for a given account.	To verify the view Existing "users" for a given account.	Passed	

Logical ID	Title	Description	Status	Defects
WLJ76S_BBX_162	Make Account active function for an selected account	To verify Make Account active function for a selected account	Passed	
WLJ76S_BBX_163	Make Account inactive function for a selected account	To verify the make Account inactive function for a selected account	Passed	
WLJ76S_BBX_164	Edit function for an particular Account.	To verify the edit function for the particular account.	Passed	
WLJ76S_BBX_165	Delete function fo an Account.	To verify the edit function for an Account.	Passed	
WLJ76S_BBX_166	View of Existing "Accounts".	To verify the View of existing "Accounts".	Passed	
WLJ76S_BBX_167	Search function for an "Account".	To verify the Search for an "Account".	Passed	
WLJ76S_BBX_168	The paging feature for the Accounts.	To verify the paging feature for the Accounts.	Passed	
WLJ76S_BBX_169	Customize the number of entries to show at a time.	To verify the Customization for number of entries to show at a time.	Passed	
WLJ76S_BBX_170	Login with the user created.	To verify the Login with the user created.	Passed	
WLJ76S_BBX_171	Roles function after logged-in with the newly created user.	To verify the roles function after logged-in with the newly created user.	Passed	
WLJ76S_BBX_172	The banners function after logged-in with the newly created user.	To Verify the banners function after logged-in with the newly created user.	Passed	
WLJ76S_BBX_173	The campaigns function after logged-in with the newly created user.	To verify the campaigns function after logged-in with the newly created user.	Passed	

Logical ID	Title	Description	Status	Defects
WLJ76S_BBX_174	Banner creation after logged-in with the newly created user.	Banner creation after logged-in with the newly created user	Failed	CSCum42694
WLJ76S_BBX_175	Login with the disabled user	To verify login with the disabled user.	Passed	
WLJ76S_BBX_176	Change password for the new logged in user.	To verify the Changed password for the new logged in user.	Passed	
WLJ76S_BBX_177	View Today report for services offered.	to verify the view of today report for services offered.	Passed	
WLJ76S_BBX_178	View Daily report for services offered.	To verify the view of daily report for services offered.	Passed	
WLJ76S_BBX_179	View Monthly report for services offered.	To verify the view of monthly report for services offered.	Passed	
WLJ76S_BBX_180	Custom selection report for services offered.	To verify the custom selection report for services offered.	Passed	
WLJ76S_BBX_186	The Ad Appearance on different mobile phones and tablets.	To verify the Ad Appearance on different mobile phones and tablets.	Passed	
WLJ76S_BBX_187	Test BBX application with supported browsers.	Test BBX application with supported browsers.	Passed	
WLJ76S_BBX_188	Web Banner on the device when the website is unavailable	To verify Web Banner on the device when the website is unavailable	Passed	
WLJ76S_BBX_189	Web Banner on the device when user is using https for browsing.	To verify Web Banner on the device when user is using https.	Passed	
WLJ76S_BBX_190	Test Logos with different formats and check the same on the user browser.	To verify the logos with different formats and verify the same on the user browser.	Passed	

Logical ID	Title	Description	Status	Defects
WLJ76S_BBX_191	Floor Maps with different resolutions and check the same on the user browser.	To verify the floor Maps with different resolutions and verify the same on the user browser.	Passed	
WLJ76S_BBX_192	The banner function when MSE is unavailable.	To verify the banner when MSE is unavailable.	Passed	
WLJ76S_BBX_193	Test for any Usability Issues.	To verify any Usability Issues.	Passed	
WLJ76S_BBX_194	The Ad Appearance by setting up another proxy server in addition to BBX proxy between BBX proxy and the web server.	To Verify the Ad Appearance by setting up another proxy server in addition to BBX proxy between BBX proxy and the web server.	Passed	
WLJ76S_BBX_195	Logout if the application is idle for the configured session timeout.	To verify the logout if the application is idle for the configured session timeout	Passed	
WLJ76S_BBX_196	check BBX related logs included along with other logs when mse logs are downloaded.	To verify the BBX related logs included along with other logs when mse logs are downloaded.	Passed	
WLJ76S_BBX_197	Backup and Restore the same version.	To verify the backup and restore the same version.	Passed	
WLJ76S_BBX_198	BBX application on upgraded machine.	To verify the BBX application on upgraded machine.	Passed	
WLJ76S_BBX_199	The service category on the mobile phone when user arrives at multiple POIs	To verify the service category on the mobile phone when user arrives at multiple POIs	Passed	

Link Aggregation Mode

Logical ID	Title	Description	Status	Defects
WLJ80S_LAG_19	Enable Link Aggregation on the controller- LAP Local Mode	To verify the Light Weight Access Point Registration/Join status on controller - Local Mode	Passed	
WLJ80S_LAG_20	Enable Link Aggregation on the controller -LAP Flex Connect Mode	To verify the Light Weight Access Point Registration status on controller - Flex Connect Mode	Passed	
WLJ80S_LAG_21	Client Association with Light Weight Access Point after Link Aggregation failover	To verify the successful association of wireless client with Light Weight Access Point	Passed	
WLJ80S_LAG_22	LAG failover -Ping, FTP (Refer- CSCth12513)	To verify the successful PING, FTP packets during LAG failover	Passed	
WLJ80S_LAG_23	LAG Port status Trap Log with SNMP Manager (Refer: CSCto58101 Delay in Port Up down causes issues with LAG working on WLC)	To verify the successful LAG port status message in SNMP manager	Passed	
WLJ80S_LAG_24	Active controller ports status when it is in Link Aggregation (LAG) failover	To check active controller ports status in Link Aggregation failover	Passed	

NCS Maps

Logical ID	Title	Description	Status	Defects
WLJ80SS_MAP_16	Copy and Replace AP-Map	To verify the successful copy and replace	Passed	

Roaming

Logical ID	Title	Description	Status	Defects
WLJ80S_11r_36	11r Client Association with AKM PSK - FlexConnect Central Switch	To verify client's initial association to a wlan with 11r enabled with ft-PSK AKM Suite in flexconnect central switching.	Passed	
WLJ80S_11r_37	11r Client Association with AKM PSK - FlexConnect Local Switch Central Auth	Verify client's initial association to a wlan with 11r enabled with ft-PSK AKM Suite in flexconnect local switch central auth.	Passed	
WLJ80S_11r_38	Over the Air Intra-controller roaming - flexconnect Central Switch	To verify fast transition client roaming over the air within the same controller in flexconnect central auth.	Passed	
WLJ80S_11r_39	Over the DS Intra-controller roaming - Flexconnect Central Switch VLAN Pooling	Verify fast transition client roaming over the DS within the same controller in flexconnect central switch.	Passed	
WLJ80S_11r_40	Open Security Over-the-Air Roaming - controller	Verify open security 11r Over-the-Air Roaming	Passed	
WLJ80S_11r_41	Open Security Over-the-Air Roaming -NCS	Verify open security 11r Over-the-Air Roaming	Passed	
WLJ80S_11r_42	Roaming of wireless data clients within APs of one Flex connect group when controller is Down.	To check for the successful and seamless roaming of wireless data clients between APs of same Flex connect group when controller is "Down".	Passed	
WLJ80S_11r_44	Roaming of data clients between APs in same Flex connect group.	To check for the seamless roaming from one AP to another from the same Flex Connect group.	Passed	

Automation

802.11w

Logical ID	Title	Description	Status	Defects
WLJ76S_AT_11w_01	Enabling MFP in WLC CLI	To verify whether MFP is enabled or not in GUI through CLI for a WLAN	Passed	

AAA

Logical ID	Title	Description	Status	Defects
WLJ76S_AT_AAA_02	Performing MAC Filtering with Clients registered in ACS server-WiSM2 Controller	To check whether registered client is successfully authenticated and associated with WLANS enabled MAC Filtering	Passed	
WLJ76S_AT_AAA_03	Performing MAC Filtering with Clients registered in ACS server-2500 Controller	To check whether registered client is successfully authenticated and associated with WLANS enabled MAC Filtering	Passed	
WLJ76S_AT_AAA_04	Performing MAC Filtering with Clients registered in ACS server-7500 Controller	To check whether registered client is successfully authenticated and associated with WLANS enabled MAC Filtering	Passed	

Anyconnect VPN

Logical ID	Title	Description	Status	Defects
WLJ76S_AT_Any_05	WPA+WPA2 network(AnyConnect) in Win7 client	To check whether the Anyconnect VPN is connecting or not using WPA+WPA2 layer2 security in Win7 Client	Passed	

Logical ID	Title	Description	Status	Defects
WLJ76S_AT_Any_06	Static WEP network (AnyConnect) in MAC Client	To check whether the AnyConnect VPN is connecting or not, using Static WEP layer2 security in MAC Client	Passed	
WLJ76S_AT_Any_07	Layer 2 security None for open auth (AnyConnect) in Win7 client	To check whether the AnyConnect VPN is connect or not using "None" Layer 2 security in Win7 Client	Passed	
WLJ76S_AT_Any_08	Static WEP network (AnyConnect) in Win7 Client	To check whether the Anyconnect VPN is connect or not using Static WEP layer2 security in Win7 Client	Passed	

Dot1x and Web-Auth Support

Logical ID	Title	Description	Status	Defects
WLJ76S_AT_Web_09	Authentication of client(Win 7) with Security Dot1x using AAA and WebAuth-2500 Controller.	Checking for the Authentication of the clients when connected to a WLAN in which Dot1x and Web-Auth is enabled.	Passed	
WLJ76S_AT_Web_10	Enabling Dot1x and Web-auth Security using WLC CLI	To verify whether WLAN is created or not with Dot1x and Web-auth security using WLC CLI	Passed	
WLJ76S_AT_Web_11	Enabling Dot1x and Web-auth Security using WLC GUI	To verify whether WLAN is able to create or not with Dot1x and Web-auth security using WLC GUI	Passed	
WLJ76S_AT_Web_12	Authentication of client(Apple Mac Book) with Security Static WEP and Web-Auth -2500,5508, WiSM2 and 7500 Controller.	Checking for the Authentication of the client when connected to a WLAN in which Static WEP and Web-Auth is enabled.	Passed	

Logical ID	Title	Description	Status	Defects
WLJ76S_AT_Web_13	Authentication of clients(Apple Mac Book & Win 7) with Security Static WEP+Dot1x and Web-Auth using ISE-2500,5508, WiSM2 and 7500 Controller.	Checking for the Authentication of the clients when connected to a WLAN in which Static WEP+Dot1x and Web-Auth is enabled.	Passed	

HTTP-HTTPS

Logical ID	Title	Description	Status	Defects
WLJ76S_AT_L2_14	Enabling HTTP in Controller via CLI	To check if we are able to verify that HTTP can be enabled in WLC	Passed	
WLJ76S_AT_L2_15	Enabling HTTPS in Controller via CLI	To check if we are able to verify that HTTPS can be enabled in WLC	Passed	

L2 Security

Logical ID	Title	Description	Status	Defects
WLJ76S_AT_L2_16	Authentication for the association of clients-WPA	Checking for the Authentication of the clients when connected to an AP.	Passed	
WLJ76S_AT_L2_17	Authentication for the association of clients-802.1X	Checking for the Authentication of the clients when connected to an AP.	Passed	
WLJ76S_AT_L2_18	Association of client with L2 Security-WEP	To verify whether client is associated or not with L2 Security-WEP	Passed	
WLJ76S_AT_L2_19	Authentication for the association of clients-Static WEP	Checking for the Authentication of the clients when connected to an AP.	Passed	

L3 Security

Logical ID	Title	Description	Status	Defects
WLJ76S_AT_L3_20	Default web login page for the controller	To verify the successful default web login page with Internal authentication	Passed	
WLJ76S_AT_L3_21	CT2500: Customized(Downloaded) login page for the controller.	To verify the successful customized web login page with Internal Authentication.	Passed	
WLJ76S_AT_L3_22	CT2500: Download customized login page for the controller.	To verify the customized web login page bundle is downloaded successfully.	Passed	
WLJ76S_AT_L3_23	Customized web login page for the controller	To verify the successful customized web login page with internal authentication	Passed	
WLJ76S_AT_L3_24	Configuring Customized(Downloaded) web-auth using NCS	To check the Customized(Downloaded) web-auth configuration in NCS reflects in WLC.	Passed	
WLJ76S_AT_L3_25	Customized web auth login page for the controller-Laptop	To verify the successful customized web login page with internal authentication	Passed	

Link Aggregation Mode

Logical ID	Title	Description	Status	Defects
WLJ76S_AT_LAG_26	CT2500: Default login page for the controller.	To verify the successful default web login page with Internal Authentication.	Passed	

Logical ID	Title	Description	Status	Defects
WLJ76S_AT_LAG_27	Enable Link Aggregation on the controller- LAP Local	To verify the Light Weight Access Point Registration/Join status on controller	Passed	
WLJ76S_AT_LAG_28	Check if lag is enabled before rebooting the WLC. (After enabling Lag)	To check whether LAG is enabled VIA CLI before rebooting WLC	Passed	

Bonjour

Logical ID	Title	Description	Status	Defects
WLJ76S_AT_Bonjour_29	Downloading the customized login page	To verify the successful download of customized login page	Passed	

NBAR

Logical ID	Title	Description	Status	Defects
WLJ76S_AT_NBAR_30	Creating AVC profile in WLC GUI	To verify if AVC profile creation is successful using WLC GUI	Passed	
WLJ76S_AT_NBAR_31	Controller should not allow the creation of 17th AVC profile	To verify if WLC throws an error message if 17th AVC profile has been created	Passed	
WLJ76S_AT_NBAR_32	Apply an AVC profile with a rule to block an application and check if that application is dropped when tried to open and notification is send via SNMP trap	To verify AVC rule to drop an application works fine	Passed	
WLJ76S_AT_NBAR_33	Configuring and verifying custom DSCP value for AVC	To verify if custom DSCP value is configured and applied successfully for a AVC rule	Passed	

NBAR Downloadable Protocol Pack

Logical ID	Title	Description	Status	Defects
WLJ76S_AT_NBARPP_34	Transfer download protocol pack on 5500 controller	To verify if transfer download of protocol pack works fine on 5500 controller	Passed	
WLJ76S_AT_NBARPP_35	AVC transfer download protocol pack on unsupported controller scenario	To Verify if AVC transfer download protocol pack on unsupported controller throws proper error	Passed	
WLJ76S_AT_NBARPP_36	Transfer download protocol pack on 7500 controller	To verify if transfer download of protocol pack works fine on 7500 controller	Passed	
WLJ76S_AT_NBARPP_37	Transfer download protocol pack on 8500 controller	To verify if transfer download of protocol pack works fine on 8500 controller	Passed	
WLJ76S_AT_NBARPP_38	AVC show engine version command	To verify if AVC show engine version command works fine	Passed	
WLJ76S_AT_NBARPP_39	AVC will retain its old protocol pack when AVC fails to load unsupported protocol pack	To verify if AVC will retain its old protocol pack when AVC fails to load	Passed	
WLJ76S_AT_NBARPP_40	AVC works fine with the new protocol pack downloaded	To Verify if AVC works fine with the new protocol pack downloaded	Passed	

Secure FTP

Logical ID	Title	Description	Status	Defects
WLJ76S_AT_SFTP_41	Transfer download of controller image with SFTP method- WLC 5500series , WiSM2 , 2500 series	To verify controller able to download the image using SFTP method and installs properly	Passed	

Multiple RADIUS Server Per SSID

Logical ID	Title	Description	Status	Defects
WLJ80S_Rad_70	Performing Dot1x authentication over PPPoE AP with RADIUS servers configured(Primary)- 2500,5508,WiSM2 and 7500 WLC	To verify whether Dot1x authentication can be performed successfully to the clients associated via the Primary RADIUS server over the PPPoE connection with the Vlan mapped	Passed	
WLJ80S_Rad_71	Performing Dot1x authentication over PPPoE AP with RADIUS servers configured(Secondary)- 2500,5508,WiSM2 and 7500 WLC	To verify whether Dot1x authentication can be performed successfully to the clients associated via the secondary RADIUS server over the PPPoE connection with the Vlan mapped	Passed	
WLJ80S_Rad_72	Performing Dot1x authentication over PPPoE AP with RADIUS servers configured(Primary failover)- 2500,5508,WiSM2 and 7500 WLC	To verify whether Dot1x authentication can be performed successfully to the clients associated via the secondary RADIUS server over the PPPoE connection with the Vlan mapped	Passed	
WLJ80S_Rad_73	Performing Dot1x authentication over FlexConnect AP with RADIUS servers configured(Primary)- 2500,5508,WiSM2 and 7500 WLC	To verify whether Dot1x authentication can be performed successfully to the clients associated via the Primary RADIUS server over the Flex AP connection with the Vlan mapped	Passed	

Logical ID	Title	Description	Status	Defects
WLJ80S_Rad_74	Performing Dot1x authentication over FlexConnect AP with RADIUS servers configured(Secondary)-2500,5508,WiSM2 and 7500 WLC	To verify whether Dot1x authentication can be performed successfully to the clients associated via the secondary RADIUS server over the Flex AP connection with the Vlan mapped	Passed	
WLJ80S_Rad_75	Performing Dot1x authentication over FlexConnect AP with RADIUS servers configured(Primary failover)-2500,5508,WiSM2 and 7500 WLC	To verify whether Dot1x authentication can be performed successfully to the clients associated via the secondary RADIUS server over the Flex AP connection with the Vlan mapped	Passed	

SR Test Cases

Button in Report Launch pad

Logical ID	Title	Description	Status	Defects
WLJ80S_Reg_01	PI: Save/Run button in Report Launch pad	To verify whether "Save", "Run and Save" button is working in Report Launch pad in PI	Passed	

Map Location in Copy and Replace

Logical ID	Title	Description	Status	Defects
WLJ80S_Reg_02	Map Location in Copy and Replace	To verify the successful copy and replace with Map Location	Passed	

Upload File

Logical ID	Title	Description	Status	Defects
WLJ80S_Reg_03	CT5508: Controller configuration Upload using TFTP server	To verify whether the configuration upload from a controller is successful	Passed	
WLJ80S_Reg_04	CT7500: Controller configuration Upload using TFTP server	To verify whether the configuration upload from a controller is successful	Passed	
WLJ80S_Reg_05	CT2504: Controller configuration Upload using TFTP server	To verify whether the configuration upload from a controller is successful	Passed	

HREAP

Logical ID	Title	Description	Status	Defects
WLJ80S_Reg_06	HREAP fault tolerance between connected and standalone AP-2.4 GHz	To verify whether the client associated to flexconnect AP will get re-associated in case of fault tolerance	Passed	
WLJ80S_Reg_07	HREAP fault tolerance between standalone and connected AP-2.4 GHz	To verify whether the client associated to flexconnect AP will get re-associated in case of fault tolerance	Passed	

AP Fallback

Logical ID	Title	Description	Status	Defects
WLJ80S_SR_01	Performing AP fallback from Secondary to Primary WLC	To verify whether the client gets disconnected or not when AP Fallback from Secondary to Primary WLC with enabling "AP Fallback" option in Primary WLC once it is UP.	Passed	
WLJ80S_SR_02	Performing AP fallback from Secondary to Primary WLC	To verify whether the client gets disconnected or not when AP Fallback from Secondary to Primary WLC with enabling "AP Fallback" option in Primary WLC at all time.	Passed	

Fault Tolerance

Logical ID	Title	Description	Status	Defects
WLJ80S_SR_03	Performing Fault tolerance of Flex AP from Primary to Secondary WLC	To verify whether AP resets its radio or not when it is moving from Primary to Secondary WLC after trying to join Primary WLC for long time.	Passed	
WLJ80S_SR_04	Performing Fault tolerance of Flex AP from Primary to Secondary WLC	To verify whether AP resets its radio or not when it is moving from Primary to Secondary WLC .	Passed	

Logical ID	Title	Description	Status	Defects
WLJ80S_SR_05	Performing Fault tolerance of AP in Local mode from Primary to Secondary WLC	To verify whether AP resets its radio or not when it is moving from Primary to Secondary WLC after trying to join Primary WLC for long time.	Passed	
WLJ80S_SR_06	Performing Fault tolerance of AP in Local mode from Primary to Secondary WLC	To verify whether AP resets its radio or not when it is moving from Primary to Secondary WLC .	Passed	

ISE

Logical ID	Title	Description	Status	Defects
WLJ80S_SR_07	Checking the end user device for HTTP probe in ISE	To Verify whether ISE shows the end user device correctly or not for HTTP probe.	Passed	

FlexConnect Enhancement

Logical ID	Title	Description	Status	Defects
WLJ80S_SR_08	Performing VLAN mapping for a WLAN in a FlexConnect Group with 1142 AP - L2 Security "Dot1x-Leap"	To verify whether VLAN mapping is done or not from AP level WLAN-VLAN mapping in a FlexConnect Group	Passed	
WLJ80S_SR_09	Performing VLAN mapping for a WLAN in a FlexConnect Group with 1142 AP - L2 Security "Dot1x-Peap"	To verify whether VLAN mapping is done or not from AP level WLAN-VLAN mapping in a FlexConnect Group	Passed	

Logical ID	Title	Description	Status	Defects
WLJ80S_SR_10	Performing VLAN mapping for a WLAN in a FlexConnect Group with 1262 AP - L2 Security "Dot1x-Leap"	To verify whether VLAN mapping is done or not from AP level WLAN-VLAN mapping in a FlexConnect Group	Passed	
WLJ80S_SR_11	Performing VLAN mapping for a WLAN in a FlexConnect Group with 1262 AP - L2 Security "Dot1x-Peap"	To verify whether VLAN mapping is done or not from AP level WLAN-VLAN mapping in a FlexConnect Group	Passed	

WLC

Logical ID	Title	Description	Status	Defects
WLJ80S_SR_12	Channel Width of RF Channel Assignment is changed	To verify Channel Width of RF Channel Assignment is not changing	Passed	

PI

Logical ID	Title	Description	Status	Defects
WLJ80S_SR_13	Validating ms-lync application in PI	To verify if ms-lync application is recognized or not in PI	Passed	
WLJ80S_SR_14	Dashlet data is refreshed when time period in dashlet is changed	To verify if dashlet data is refreshed when time period in dashlet is changed	Passed	

AAA

Logical ID	Title	Description	Status	Defects
WLJ80S_AAA_45	Performing MAC Filtering with Clients registered in ACS server- WiSM2 Controller	To check whether registered client is successfully authenticated and associated with WLANS enabled MAC Filtering	Passed	
WLJ80S_AAA_46	Performing MAC Filtering with Clients registered in ACS server- 2500 Controller	To check whether registered client is successfully authenticated and associated with WLANS enabled MAC Filtering	Passed	
WLJ80S_AAA_47	Performing MAC Filtering with Clients registered in ACS server- 7500 Controller	To check whether registered client is successfully authenticated and associated with WLANS enabled MAC Filtering	Passed	

Secure FTP

Logical ID	Title	Description	Status	Defects
WLJ80S_SFTP__76	Transfer download of controller image with SFTP method- WLC 5500series , WiSM2 , 2500 series	To verify controller able to download the image using SFTP method and installs properly	Passed	
WLJ80S_SFTP__77	Transfer of controller configuration with SFTP method - WLC 5500 , 2500 , WiSM2.	To verify controller able to download a configuration and upload the current configuration using SFTP transfer method	Passed	
WLJ80S_SFTP__78	Transfer download of controller certificates with SFTP method - WLC Virtual and 7500	To verify controller is able to download all the supported certificates using SFTP transfer method	Passed	

Logical ID	Title	Description	Status	Defects
WLJ80S_SFTP__79	SFTP Transfer validation with other configuration items like, path, filename, server IP and port number - All Controllers	Verify controller validates properly the transfer parameters like server IP address, Port number, filename, and path. Transfer is aborted if any of the above configuration parameters are in-correct or server issues - All controllers	Passed	
WLJ80S_SFTP__80	Transfer upload of other data type files with SFTP method - WLC 5500 series , 2500 and WiSM2	To verify controller is able to upload all the other supported data type files using SFTP transfer method- WLC 5500 , 2500 & WiSM2.	Passed	

L3 Security

Logical ID	Title	Description	Status	Defects
WLJ80S_SR_L3_01	Configuring Customized (Downloaded) web-auth using NCS	To check the Customized(Downloaded) web-auth configuration in NCS reflects in WLC.	Passed	
WLJ80S_SR_L3_02	CT2500: Customized (Downloaded) login page for the controller.	To verify the successful customized web login page with Internal Authentication.	Passed	
WLJ80S_SR_L3_03	CT2500: Download customized login page for the controller.	To verify the customized web login page bundle is downloaded successfully.	Passed	
WLJ80S_SR_L3_04	Customized web auth login page for the controller-Laptop	To verify the successful customized web login page with internal authentication	Passed	
WLJ80S_SR_L3_05	Downloading the customized login page	To verify the successful download of customized login page	Passed	
WLJ80S_SR_L3_06	Customized web login page for the controller	To verify the successful customized web login page with internal authentication	Passed	

Logical ID	Title	Description	Status	Defects
WLJ80S_SR_L3_07	CT2500: Default login page for the controller.	To verify the successful default web login page with Internal Authentication.	Passed	
WLJ80S_SR_L3_08	Default web login page for the controller	To verify the successful default web login page with Internal authentication	Passed	

Anyconnect VPN

Logical ID	Title	Description	Status	Defects
WLJ80S_Any_58	WPA+WPA2 network(AnyConnect) in Win7 client	To check whether the Anyconnect VPN is connecting or not using WPA+WPA2 layer2 security in Win7 client	Passed	
WLJ80S_Any_59	Static WEP network(AnyConnect) in Win7 client	To check whether the AnyConnect VPN is connecting or not, using Static WEP layer2 security in Win7 client	Passed	
WLJ80S_Any_60	Layer 2 security None for open auth (AnyConnect) in Win7 client	To check whether the AnyConnect VPN is connect or not using "None" Layer 2 security in Win7 client	Passed	
WLJ80S_Any_61	WPA+WPA2 network(AnyConnect) using MacBook client	To check whether the Anyconnect VPN is connect or not, using WPA+WPA2 layer2 security in MacBook client	Passed	
WLJ80S_Any_62	Static WEP network (AnyConnect) in MacBook Client	To check whether the Anyconnect VPN is connect or not using Static WEP layer2 security in MacBook Client	Passed	
WLJ80S_Any_63	Layer 2 security "None" for open auth network (AnyConnect) in MacBook Client	To check whether the Anyconnect VPN is connect or not , using "None" Layer 2 security in MacBook Client	Passed	

Logical ID	Title	Description	Status	Defects
WLJ80S_Any_64	WPA+WPA2 network (AnyConnect) using Samsung Galaxy sII client	To check whether the Anyconnect VPN is connect or not, using WPA+WPA2 layer2 security in Samsung Galaxy sII client	Passed	
WLJ80S_Any_65	Static WEP network (AnyConnect) in Samsung Galaxy sII client	To check whether the Anyconnect VPN is connect or not using Static WEP layer2 security in Samsung Galaxy sII Client	Passed	
WLJ80S_Any_66	Layer 2 security "None" for open auth network (Anyconnect) in Samsung Galaxy sII client.	To check whether the Anyconnect VPN is connect or not , using "None" Layer 2 security in Samsung Galaxy sII Client.	Passed	

Autonomous to LWAPP Migration

Logical ID	Title	Description	Status	Defects
WLJ80S_Migration_01	Autonomous to LWAPP Migration	To migrate the autonomous to LWAPP	Passed	
WLJ80S_Migration_02	NCS: migrating autonomous AP to LWAPP using the "Schedule for later date /time	To verify if autonomous AP is migrating to LAP immediately using the option " Schedule for later date/time"	Passed	

Backup And Restore of PI

Logical ID	Title	Description	Status	Defects
WLJ80S_BnR_81	Performing Backup and restore in PI	To verify the PI backup and restore is successful	Passed	

Bonjour

LSS

Logical ID	Title	Description	Status	Defects
WLJ76S_Bonjour_01	Check controller includes Service provider Associated AP-MAC in Service database (LSS disable/enable)	To check for the Controller to include Wireless Service Provider associated AP MAC address during snooping	Passed	
WLJ76S_Bonjour_04	mDNS LSS functionality verification when controller have only wired side service providers for the client request service	To check for the LSS to work only for wireless SPs. This test to make sure controller sends all wired SP to client	Passed	
WLJ76S_Bonjour_07	Test to verify LSS mDNS configuration	To verify LSS mDNS configuration	Passed	

mDNS

Logical ID	Title	Description	Status	Defects
WLJ76S_Bonjour_02	Controller mDNS Browser functionality verification	To check for the Controller to display the un-snooped services list with reason	Passed	
WLJ76S_Bonjour_03	mDNS LSS functionality verification when controller have only wireless side service providers for the client request service	To check for the Controller to check the RRM neighbour list while responding to client bonjour query when LSS is enabled on that WLAN. Based on neighbour list, service provider list will be served	Passed	
WLJ76S_Bonjour_05	mDNS-AP on TTL expiry	To Check if controller deletes the services learned from mDNS-AP on TTL expiry	Passed	
WLJ76S_Bonjour_06	mDNS-AP functionality verification : AP reset / shutdown	to check for the Controller to delete the service provider info from database when AP disjoin with controller	Passed	

Logical ID	Title	Description	Status	Defects
WLJ76S_Bonjour_08	mDNS-AP behavior verification when it joins with other controller	To check for AP configuration when AP join with other controller, based on global snooping configuration	Passed	
WLJ76S_Bonjour_09	Enable mDNS-AP snooping	to check for the Controller to send aggregated query when enable mDNS-AP snooping	Passed	
WLJ76S_Bonjour_10	Global mDNS config via CLI	To check whether 5760 controller accepts the global mDNS config commands via CLI	Passed	
WLJ76S_Bonjour_11	Global mDNS config via GUI	To check whether 5760 controller accepts the global mDNS config commands via GUI	Passed	
WLJ76S_Bonjour_12	mDNS config in Interface via CLI	To check whether 5760 controller accepts interface mDNS config via CLI	Passed	
WLJ76S_Bonjour_13	mDNS config in Interface via GUI	To check whether interface mDNS config were applied successfully via GUI	Passed	

BYOD

Logical ID	Title	Description	Status	Defects
WLJ76S_BYOD_01	Setting configurations for BYOD in ISE.	To set configurations like authorization, authentication, portal configs..etc for BYOD in ISE.	Passed	
WLJ76S_BYOD_02	Associating a Win 7 client to a SSID(L2 Security-None) which is mapped to ISE(BYOD) with group "Employee"	To verify whether Win 7 client is authenticated and authorized successfully or not to a SSID(L2 Security-None) with conditions configured in ISE.	Passed	

Logical ID	Title	Description	Status	Defects
WLJ76S_BYOD_03	Associating a Win 7 client to a SSID(L2 Security-Dot1x) which is mapped to ISE(BYOD) with group "Employee"	To verify whether Win 7 client is authenticated and authorized successfully or not to a SSID(L2 Security-Dot1x) with conditions configured in ISE.	Passed	
WLJ76S_BYOD_04	Associating a Win 7 client to a SSID(L2 Security-Mac Filtering) which is mapped to ISE(BYOD) with group "Employee"	To verify whether Win 7 client is authenticated and authorized successfully or not to a SSID(L2 Security-Mac Filtering) with conditions configured in ISE.	Passed	
WLJ76S_BYOD_05	Associating a Win 7 client to a SSID(L2 Security-WPA+Dot1x) which is mapped to ISE(BYOD) with group "Employee"	To verify whether Win 7 client is authenticated and authorized successfully or not to a SSID(L2 Security-WPA+Dot1x) with conditions configured in ISE.	Passed	
WLJ76S_BYOD_06	Associating a Win 8 client to a SSID(L2 Security-None) which is mapped to ISE(BYOD) with group "Employee"	To verify whether Win 8 client is authenticated and authorized successfully or not to a SSID(L2 Security-None) with conditions configured in ISE.	Passed	
WLJ76S_BYOD_07	Associating a Win 8 client to a SSID(L2 Security-Dot1x) which is mapped to ISE(BYOD) with group "Employee"	To verify whether Win 8 client is authenticated and authorized successfully or not to a SSID(L2 Security-Dot1x) with conditions configured in ISE.	Passed	
WLJ76S_BYOD_08	Associating a Win 8 client to a SSID(L2 Security-Mac Filtering) which is mapped to ISE(BYOD) with group "Employee"	To verify whether Win 8 client is authenticated and authorized successfully or not to a SSID(L2 Security-Mac Filtering) with conditions configured in ISE.	Passed	

Logical ID	Title	Description	Status	Defects
WLJ76S_BYOD_09	Associating a Win 8 client to a SSID(L2 Security-WPA+Dot1x) which is mapped to ISE(BYOD) with group "Employee"	To verify whether Win 8 client is authenticated and authorized successfully or not to a SSID(L2 Security-WPA+Dot1x) with conditions configured in ISE.	Passed	
WLJ76S_BYOD_10	Associating a Apple MacBook client to a SSID(L2 Security-None) which is mapped to ISE(BYOD) with group "Employee"	To verify whether Apple MacBook client is authenticated and authorized successfully or not to a SSID(L2 Security-None) with conditions configured in ISE.	Passed	
WLJ76S_BYOD_11	Associating a Apple MacBook client to a SSID(L2 Security-Dot1x) which is mapped to ISE(BYOD) with group "Employee"	To verify whether Apple MacBook client is authenticated and authorized successfully or not to a SSID(L2 Security-Dot1x) with conditions configured in ISE.	Passed	
WLJ76S_BYOD_12	Associating a Apple MacBook client to a SSID(L2 Security-Mac Filtering) which is mapped to ISE(BYOD) with group "Employee"	To verify whether Apple MacBook client is authenticated and authorized successfully or not to a SSID(L2 Security-Mac Filtering) with conditions configured in ISE.	Passed	
WLJ76S_BYOD_13	Associating a Apple MacBook client to a SSID(L2 Security-WPA+Dot1x) which is mapped to ISE(BYOD) with group "Employee"	To verify whether Apple MacBook client is authenticated and authorized successfully or not to a SSID(L2 Security-WPA+Dot1x) with conditions configured in ISE.	Passed	

Logical ID	Title	Description	Status	Defects
WLJ76S_BYOD_14	Associating a Apple Iphone to a SSID(L2 Security-None) which is mapped to ISE(BYOD) with group "Employee"	To verify whether Apple Iphone client is authenticated and authorized successfully or not to a SSID(L2 Security-None) with conditions configured in ISE.	Passed	
WLJ76S_BYOD_15	Associating a Apple Iphone to a SSID(L2 Security-Dot1x) which is mapped to ISE(BYOD) with group "Employee"	To verify whether Apple Iphone client is authenticated and authorized successfully or not to a SSID(L2 Security-Dot1x) with conditions configured in ISE.	Passed	
WLJ76S_BYOD_16	Associating a Apple Iphone to a SSID(L2 Security-Mac Filtering) which is mapped to ISE(BYOD) with group "Employee"	To verify whether Apple Iphone client is authenticated and authorized successfully or not to a SSID(L2 Security-Filtering) with conditions configured in ISE.	Passed	
WLJ76S_BYOD_17	Associating a Samsung S2 to a SSID(L2 Security-None) which is mapped to ISE(BYOD) with group "Employee"	To verify whether Samsung S2client is authenticated and authorized successfully or not to a SSID(L2 Security-None) with conditions configured in ISE.	Passed	
WLJ76S_BYOD_18	Associating a Samsung S2 to a SSID(L2 Security-Dot1x) which is mapped to ISE(BYOD) with group "Employee"	To verify whether Samsung S2client is authenticated and authorized successfully or not to a SSID(L2 Security-Dot1x) with conditions configured in ISE.	Passed	

Logical ID	Title	Description	Status	Defects
WLJ76S_BYOD_19	Associating a Samsung S2 to a SSID(L2 Security-Mac Filtering) which is mapped to ISE(BYOD) with group "Employee"	To verify whether Samsung S2 client is authenticated and authorized successfully or not to a SSID(L2 Security-Mac Filtering) with conditions configured in ISE.	Passed	
WLJ76S_BYOD_20	Associating two clients(Win 7 & MacBook) to a SSID(L2 Security-Dot1x) and checking whether conditions applied to each clients.	To verify whether two clients are authenticated and authorized successfully or not to a SSID(L2 Security-Dot1x) with each conditions configured in ISE.	Passed	
WLJ76S_BYOD_21	Associating two clients(Win 7 & MacBook) to a SSID(L2 Security-None) and checking whether conditions applied to each clients.	To verify whether two clients are authenticated and authorized successfully or not to a SSID(L2 Security-None) with each conditions configured in ISE.	Passed	
WLJ76S_BYOD_22	Associating two clients(Win 7 & MacBook) to a SSID(L2 Security-Mac filtering) and checking whether conditions applied to each clients.	To verify whether two clients are authenticated and authorized successfully or not to a SSID(L2 Security-Mac Filtering) with each conditions configured in ISE.	Passed	
WLJ76S_BYOD_23	Associating two clients(Samsung S2 & Iphone) to a SSID(L2 Security-Dot1x) and checking whether conditions applied to each clients.	To verify whether two clients are authenticated and authorized successfully or not to a SSID(L2 Security-Dot1x) with each conditions configured in ISE.	Passed	

Logical ID	Title	Description	Status	Defects
WLJ76S_BYOD_24	Associating two clients(Samsung S2 & Iphone) to a SSID(L2 Security-None) and checking whether conditions applied to each clients.	To verify whether two clients are authenticated and authorized successfully or not to a SSID(L2 Security-None) with each conditions configured in ISE.	Passed	
WLJ76S_BYOD_25	Associating two clients(Samsung S2 & Iphone) to a SSID(L2 Security-Mac Filtering) and checking whether conditions applied to each clients.	To verify whether two clients are authenticated and authorized successfully or not to a SSID(L2 Security-Mac Filtering) with each conditions configured in ISE.	Passed	

Dot1x and Web-Auth Support

Logical ID	Title	Description	Status	Defects
WLJ80S_SR_Web_67	Authentication of client(Apple Mac Book) with Security Static WEP and Web-Auth -2500,5508, WiSM2 and 7500 Controller.	Checking for the Authentication of the client when connected to a WLAN in which Static WEP and Web-Auth is enabled.	Passed	
WLJ80S_SR_Web_68	Authentication of clients(Apple Mac Book and Win 7) with Security Static WEP+Dot1x and Web-Auth using ISE-2500,5508, WiSM2 and 7500 Controller.	Checking for the Authentication of the clients when connected to a WLAN in which Static WEP+Dot1x and Web-Auth is enabled.	Passed	
WLJ80S_SR_Web_69	Authentication of clients(Apple Mac Book and Win 7) with Security Dot1x using ISE and Web Auth-2500 ,5508 , WiSM2 and 7500 Controller.	Checking for the Authentication of the clients when connected to a WLAN in which Dot1x and Web-Auth is enabled.	Passed	

Flexconnect Enhancements

Logical ID	Title	Description	Status	Defects
WLJ80S_FLEX_48	WGB Association, WGB client registration through Flexconnect AP in connected mode.	To verify whether the WGB associates and the clients are registered to the controller through Flexconnect AP.	Passed	
WLJ80S_FLEX_49	WGB Association, WGB client registration through Flexconnect AP in standalone mode	To verify whether the WGB associates and the clients are registered to the controller through Flexconnect AP in standalone mode.	Passed	
WLJ80S_FLEX_50	WGB Association through Local authenticated WLAN.	To verify whether the WGB associates with the flexconnect through local authenticated WLAN	Passed	
WLJ80S_FLEX_51	WGB disassociation from the controller	To verify whether the WGB disassociates from the controller upon deletion	Passed	
WLJ80S_FLEX_52	WGB client de-registration with the flexconnect in standalone mode to connected mode	To verify whether the WGB disassociates from the controller upon deletion	Passed	
WLJ80S_FLEX_53	Flexconnect AP reload in connected mode when WGB is associated-Central auth locally switched	To verify whether WGB and WGB clients re-associates to the controller after flexconnect AP reloads	Passed	
WLJ80S_FLEX_54	Flexconnect AP reload in standalone mode when WGB is associated-Local authentication	To verify whether WGB and WGB clients re-associates to the controller after flexconnect AP reloads	Passed	

Logical ID	Title	Description	Status	Defects
WLJ80S_FLEX_55	WGB Clients roaming to a different flexconnect on the same controller	To verify the WGB client re-associates successfully to a different flexconnect after roaming within the controller	Passed	

High Availability - SR

Logical ID	Title	Description	Status	Defects
WLJ76S_NTIBP_HA_01	WLC Licensing after upgrading bootloader and reloading	To Verify whether WLC retains its license after bootloader upgrade and reload	Passed	
WLJ76S_NTIBP_HA_02	High Availability WLC licensing after reset the system	To verify whether WLC in HA environment has no issues with ap count licence on resetting the system	Passed	
WLJ76S_NTIBP_HA_03	HA: GARP packet via management interface post switchover	To verify whether GARP packet can be sent over management interface of newly become Active WLC post switchover	Passed	
WLJ76S_NTIBP_HA_04	Incremental Config sync between the WLC	To verify whether the Incremental config is synced between Active and Standby Controller	Passed	

High Availability

Logical ID	Title	Description	Status	Defects
WLJ80S_SR_HA_25	Bringing HA pair up- WLC 5508	To verify whether the HA pair(ACTIVE:STANDBY) is up successfully	Passed	
WLJ80S_SR_HA_26	Bringing HA pair up- WLC 7500	To verify whether the HA pair(ACTIVE:STANDBY) is up successfully	Passed	

Logical ID	Title	Description	Status	Defects
WLJ80S_SR_HA_27	Controller HA pair with different hardware models	To verify the role negotiation between the controllers with different hardware models	Passed	
WLJ80S_SR_HA_28	Controller HA pair with different software versions	To verify the role negotiation between the controllers with different software versions	Passed	
WLJ80S_SR_HA_29	Controller mode when the redundancy port loses connectivity	To verify the HA pair controller modes after disconnecting the redundancy port	Passed	
WLJ80S_SR_HA_30	Controller mode when the Gateway is not reachable to the STANDBY controller	To verify the HA pair controller modes when the Gateway is not reachable from the STANDBY controller	Passed	
WLJ80S_SR_HA_31	Controller mode when the Gateway is not reachable to the ACTIVE controller	To verify the HA pair controller modes when the Gateway is not reachable from the ACTIVE controller	Passed	
WLJ80S_SR_HA_32	Controller mode when the Gateway is not reachable to both the controller	To verify the HA pair controller modes when the Gateway is not reachable to both the controllers	Passed	
WLJ80S_SR_HA_33	Controller modes(HA pair) after power failure	To verify the controller modes after power failure on both the controllers	Passed	
WLJ80S_SR_HA_34	HA mode after resetting the peer system from ACTIVE	To verify the HA mode after resetting the peer system from ACTIVE controller	Passed	
WLJ80S_SR_HA_35	Client status during AP SSO after active failover-Web Authentication	To check whether the Client gets disassociated and forced to re-join to the controller after AP SSO	Passed	

HREAP

Logical ID	Title	Description	Status	Defects
WLJ80S_SR_Fault_56	HREAP fault tolerance between connected and standalone AP-2.4 GHz	To verify whether the client associated to flexconnect AP will get re-associated in case of fault tolerance	Passed	
WLJ80S_SR_Fault_57	HREAP fault tolerance between standalone and connected AP-2.4 GHz	To verify whether the client associated to flexconnect AP will get re-associated in case of fault tolerance	Passed	

L2 Security

Logical ID	Title	Description	Status	Defects
WLJ80S_SR_L2_09	Associating 7921G IP phone - WEP	To check whether the 7921G IP phone is associated successfully into the network through WEP authentication method	Passed	
WLJ80S_SR_L2_10	Associating 7921G IP phone - WPA	To check whether the 7921G IP phone is associated successfully into the network through WPA authentication method	Passed	
WLJ80S_SR_L2_11	7921G IP Phone Association through WEP(RADIUS Server Authentication)	To verify the 7921G IP Phone is successfully authenticated and associated through WEP	Passed	
WLJ80S_SR_L2_12	Authentication for the association of clients-WPA	Checking for the Authentication of the clients when connected to an AP.	Passed	
WLJ80S_SR_L2_13	Authentication for the association of clients-802.1X	Checking for the Authentication of the clients when connected to an AP.	Passed	
WLJ80S_SR_L2_14	Authentication for the association of clients-Static WEP	Checking for the Authentication of the clients when connected to an AP.	Passed	

Logical ID	Title	Description	Status	Defects
WLJ80S_SR_L2_15	Authentication for the association of clients- Static WEP+802.1X	Checking for the Authentication of the clients when connected to an AP.	Passed	

MSE Location Analytics

Logical ID	Title	Description	Status	Defects
WLJ76S_LA_01	Enabling Location Analytics from PI.	To Verify Location Analytics can be enabled from PI and UI is launched.	Passed	
WLJ76S_LA_02	3D capabilities on browsers - Firefox.	To verify 3D representation is supported using WebGL and test your browser on http://get.webgl.org/ for suitability	Passed	
WLJ76S_LA_03	3D capabilities on browsers - Internet Explore	To verify 3D representation is supported using WebGL and test your browser on http://get.webgl.org/ for suitability.	Passed	
WLJ76S_LA_04	3D capabilities on browsers - Chrome	To verify 3D representation is supported using WebGL and test your browser on http://get.webgl.org/ for suitability	Passed	
WLJ76S_LA_05	Analytics UI loads with current changes.	To verify Analytics and Report Modules launches respectively.	Passed	
WLJ76S_LA_06	Analytics for Multiple building selection	To verify Analytics shows Multiple Buildings.	Passed	

Logical ID	Title	Description	Status	Defects
WLJ76S_LA_07	Analytics for Multiple floor selection on 3D view	To verify Analytics for Multiple floor with 3D view.	Passed	
WLJ76S_LA_08	Switching between 3D and 2D by selecting view tab	To Verify 3D and 2D tab switch and vice versa	Passed	
WLJ76S_LA_09	Top Bar analytics and Reporting	To Verify the Top Bar analytics and reporting This part of the interface allows the user to switch modules, between analytics and reporting	Passed	
WLJ76S_LA_10	Date Selection in Location Analytics	To Verify the analytics Rules - Date Section	Passed	
WLJ76S_LA_11	Time Selection without Date option under Location Analytics	To Verify the analytics Rules - Time Section without Date option	Passed	
WLJ76S_LA_12	Time Selection with Date Option in Location Analytics	To Verify the Analytics Rules - Time Section with Date option	Passed	
WLJ76S_LA_13	Path Selection in Location Analytics	To Verify the Rules - Path Section	Passed	
WLJ76S_LA_14	Zone Selection in Location Analytics	To Verify the analytics Rules - Zone Section	Passed	
WLJ76S_LA_15	Run the filter rule for the "quality" of data based on the quantitative measures around the paths detected.	To Verify the Rules - Filters Section - Location actual	Passed	
WLJ76S_LA_16	Run the rule using path filter	To Verify the Rules Path filter	Passed	
WLJ76S_LA_17	Run the zone analysis for visualization	To Verify the Zone Analysis	Passed	

Logical ID	Title	Description	Status	Defects
WLJ76S_LA_18	Run analysis using Zone Analysis dwell time	To Verify Zone Analysis Dwell Time	Passed	
WLJ76S_LA_19	Run the zone analysis for device	To Verify the Analysis - Zone Analysis Device	Passed	
WLJ76S_LA_20	Run the zone analysis for crowding	To Verify the Zone Analysis Crowding	Passed	
WLJ76S_LA_21	Run zone analysis-advance number	To Verify Zone Analysis - Advance Number	Passed	
WLJ76S_LA_22	Run daily visitors and dwell time report	To Verify the Report Daily Device and Dwell time	Passed	
WLJ76S_LA_23	Run Daily dwell time report	To Verify the Report Daily Dwell (Dwell Times over one day)	Passed	
WLJ76S_LA_24	Check report for repeated visitors	To Verify Report Frequent devices for top N customers(devices)	Passed	
WLJ76S_LA_25	Check Report Connected/detected devices	To Verify Report connected /detected device	Passed	
WLJ76S_LA_26	Report Movement And Flow / Movement between zones	To Verify Report Movement And Flow / Movement between zones	Passed	
WLJ76S_LA_27	Run the filter rule for the "quality" of data based on the quantitative measures around the paths detected.	To verify the filter rule for the "quality" of data based on the quantitative measures around the paths detected.	Passed	
WLJ76S_LA_28	Run the rule using advanced filter option	To verify the rule using advanced filter option	Passed	
WLJ76S_LA_29	Check the zone analysis using optimal Dwell option	To verify the zone analysis using optimal Dwell option	Passed	

Logical ID	Title	Description	Status	Defects
WLJ76S_LA_30	Run the zone analysis using optimal devices using advance option	To verify the zone analysis using optimal devices using advance option	Passed	
WLJ76S_LA_31	Run the zone analysis using optimal crowding using advance option	To verify the zone analysis using optimal crowding using advance option	Passed	
WLJ76S_LA_35	Run the rule using method actual duration	To Verify Analysis- Zone Analysis - Advance Method Actual duration	Passed	
WLJ76S_LA_36	Run the rule using advance Location Estimation	To Verify the Analysis- Zone Analysis - Advance Location Estimation	Passed	

NBAR

Logical ID	Title	Description	Status	Defects
WLJ80S_NBAR_82	Apply an AVC profile with a rule to block an application and check if that application is dropped when tried to open and notification is send via SNMP trap	To verify AVC rule to drop an application works fine	Passed	
WLJ80S_NBAR_83	AVC profile should work fine in AP SSO	To verify if AVC profile works fine after AP SSO	Passed	
WLJ80S_NBAR_84	application traffic flow from client to AP when AP in local mode and centrally switched flexconnect - 5508,7500 &2500 WLC	To verify the IP traffic flow from client to AP when AP is in local mode and centrally switched flexconnect	Passed	

Logical ID	Title	Description	Status	Defects
WLJ80S_NBAR_85	Configuring and verifying custom DSCP value for AVC	To verify if custom DSCP value is configured and applied successfully for a AVC rule	Passed	
WLJ80S_NBAR_86	Bandwidth contract Rate limit applied per-SSID on downstream traffic	To Verify if bandwidth contract applied per-SSID on downstream traffic works fine	Passed	
WLJ80S_NBAR_87	Override Per-user bandwidth contract on downstream and upstream traffic	To verify if Override Per-user bandwidth contract on downstream and upstream traffic works fine	Passed	
WLJ80S_NBAR_88	AVC Monitoring	To verify the AVC monitoring .	Passed	

PI AVC

Logical ID	Title	Description	Status	Defects
WLJ76S_PI_AVC_01	Clients detail in PI	To verify if clients connected to AVC enabled SSID are displayed in the PI	Passed	
WLJ76S_PI_AVC_02	Clients End User Experience statistics in PI	To verify if each clients traffic based on applications used are reflected in the End User Experience tab of PI	Passed	
WLJ76S_PI_AVC_03	Redirection to particular End User Experience dashboard from application tab of PI	To verify whether the particular clients End User Experience dashboard is redirected from the Application tab when the clients usage bar is clicked from the chart view	Passed	
WLJ76S_PI_AVC_04	Redirection to particular Application Statistics from End User Experience tab of PI	To verify whether the particular Application's usage statistics is displayed once the Application is clicked from the chart view of a clients End User Experience dashboard	Passed	

Logical ID	Title	Description	Status	Defects
WLJ76S_PI_AVC_05	Time Frame Filter in Detail Dashboards of PI	To verify whether statistics are displayed accordingly to the specified Time Frame	Passed	
WLJ76S_PI_AVC_06	Network Aware Filter in Detail Dashboards of PI	To verify whether all the SSID are listed in the Wireless Network Aware filter	Passed	
WLJ76S_PI_AVC_07	Client Conversations Dashboard in End User Experience tab of PI	To verify whether all the Conversations to and from a particular user's IP address are listed correctly	Passed	
WLJ76S_PI_AVC_08	Windows 8 Clients End User Experience statistics in PI	To verify if Windows 8 clients traffic based on applications used are reflected in the End User Experience tab of PI	Passed	
WLJ76S_PI_AVC_09	Clients detail in PI	To verify if clients connected to Web-Auth enabled SSID are displayed in the PI	Passed	
WLJ76S_PI_AVC_10	Clients detail in PI	To verify if clients connected to a WLAN via AP present in AP Group are displayed in the PI	Passed	
WLJ76S_PI_AVC_11	Virtual WLC's Client Statistics in PI	To verify if clients connected to AVC enabled WLAN present in the Virtual WLC are displayed in the PI	Passed	

Adhoc Test Cases

Logical ID	Title	Description	Status	Defects
WLJ76S_Adhoc_01	Error message shown when configuring DCA Parameters in Katana GUI	To verify whether error message is shown or not in Katana GUI while configuring DCA parameters.	Failed	CSCuj40828

Logical ID	Title	Description	Status	Defects
WLJ76S_Adhoc_02	While selecting building duplicate zone on zone section is shown	To Verify that Duplicate zone on zone section is not shown while selecting the building	Failed	CSCUj78948
WLJ76S_Adhoc_03	Analytics reports page shows unconfigured zone	To verify Analytics reports page shows unconfigured zone properly	Failed	CSCUj78957
WLJ76S_Adhoc_04	Banner image has changes is reflecting even when the changes done on image is cancelled	To Verify that the Banner image down not change on clicking cancel changes done on image	Failed	CSCUj83130
WLJ76S_Adhoc_05	Deal banner wrongly shows tablet/desktop image for mobile devices	To verify that Deal Banner does not show wrong tablet /desktop images for mobile devices	Failed	CSCUj94459
WLJ76S_Adhoc_06	Katana GUI- License page is loaded with an error in HA-SKU box	To verify whether license page is loaded or not for HA-SKU box in Katana GUI	Passed	
WLJ76S_Adhoc_07	Unable to clear the DNS IP once it is set in the AP static config	To check whether DNS field in AP page is able to set 0.0.0.0 or not in WLC GUI.	Failed	CSCUm65868
WLJ76S_Adhoc_08	Banner hidden on top page and displayed after scroll down	To verify the banner appearance on iPhone 5	Failed	CSCUm02265
WLJ76S_Adhoc_09	MSE address is displayed even after setting DNS server, result is same	To verify the domain name in the MSE MAP redirect page	Failed	CSCUm02327
WLJ76S_Adhoc_10	Space inside quotes aren't accepted when creating SSID in Katana GUI	To verify whether space inside quotes are accepted or not when creating SSID in Katana GUI	Passed	

Logical ID	Title	Description	Status	Defects
WLJ76S_Adhoc_11	Wrong error message shown while enabling /disabling EAP profile	To verify whether wrong message is shown or not while enabling/disabling EAP profile	Passed	

NEC

Anyconnect VPN

Logical ID	Title	Description	Status	Defects
WLJ76S_NEC_01	WPA+WPA2 network (AnyConnect) using NEC LifeTouch L/ NEC LaVie	To check whether the Anyconnect VPN is connect or not, using WPA+WPA2 layer2 security in NEC LifeTouch L/ NEC LaVie	Passed	
WLJ76S_NEC_02	Static WEP network (AnyConnect) in NEC LifeTouch L/ NEC LaVie	To check whether the Anyconnect VPN is connect or not using Static WEP layer2 security in NEC LifeTouch L/ NEC LaVie	Passed	
WLJ76S_NEC_03	Layer 2 security "None" for open auth network (Anyconnect) in NEC LifeTouch L/ NEC LaVie .	To check whether the Anyconnect VPN is connect or not , using "None" Layer 2 security in NEC LifeTouch L/ NEC LaVie .	Passed	
WLJ76S_NEC_04	Anyconnect VPN - Intra controller roaming within the same subnet in NEC LifeTouch L/ NEC LaVie	To verify the intra controller roaming within the same subnet in NEC LifeTouch L/ NEC LaVie	Passed	
WLJ76S_NEC_05	Anyconnect VPN - Inter controller roaming within the different subnet in NEC LifeTouch L/ NEC LaVie	To verify the inter controller roaming using different subnet in NEC LifeTouch L/ NEC LaVie	Passed	

L2 Security

Logical ID	Title	Description	Status	Defects
WLJ76S_NEC_06	Associating NEC LifeTouch L/ NEC LaVie - L2 Security "None"	To check whether the NEC LifeTouch L/ NEC LaVie is associated successfully into the network or not.	Passed	
WLJ76S_NEC_07	Associating NEC LifeTouch L/ NEC LaVie - Static WEP	To check whether the NEC LifeTouch L/ NEC LaVie is associated successfully into the network through WEP authentication method	Passed	
WLJ76S_NEC_08	Associating NEC LifeTouch L/ NEC LaVie - WPA2+PSK	To check whether the NEC LifeTouch L/ NEC LaVie is associated successfully into the network through WPA2+PSK authentication method	Passed	
WLJ76S_NEC_09	Associating NEC LifeTouch L/ NEC LaVie - L2 Security "WPA2+Dot1x".	To check whether the NEC LifeTouch L/ NEC LaVie is associated successfully into the network or not with L2 Security WPA2+Dot1x	Passed	

L3 Security

Logical ID	Title	Description	Status	Defects
WLJ76S_NEC_10	Associating NEC LifeTouch L/ NEC LaVie 3 security "Web-Auth"	To check whether the NEC LifeTouch L/ NEC LaVie s is associated successfully or not into the network through Web-Auth	Passed	
WLJ76S_NEC_11	Associating NEC LifeTouch L/ NEC LaVie 3 security "Web-Auth Passthrough"	To check whether the NEC LifeTouch L/ NEC LaVie s is associated successfully or not into the network through Web-Auth Passthrough	Passed	

Roaming

Logical ID	Title	Description	Status	Defects
WLJ76S_NEC_12	Associating NEC LifeTouch L/ NEC LaVie to a WLAN with FT enabled.	To verify whether NEC LifeTouch L/ NEC LaVie client is connected or not with FT enabled WLAN in 5760 WLC.	Passed	
WLJ76S_NEC_13	Associating NEC LifeTouch L/ NEC LaVie to a WLAN without FT enabled.	To verify whether NEC LifeTouch L/ NEC LaVie client is connected or not without FT enabled WLAN in 5760 WLC.	Passed	
WLJ76S_NEC_14	Roaming NEC LifeTouch L/ NEC LaVie client between 2 5760 WLC's with FT enabled & WPA2+PSk security.	To verify whether NEC LifeTouch L/ NEC LaVie client is roamed or not between 2 5760 WLC's.	Passed	
WLJ76S_NEC_15	Roaming NEC LifeTouch L/ NEC LaVie client between 2 5760 WLC's with FT enabled & WPA2+PSk security.	To verify whether NEC LifeTouch L/ NEC LaVie client is roamed or not between 2 5760 WLC's.	Passed	
WLJ76S_NEC_16	Roaming NEC LifeTouch L/ NEC LaVie client between 2 5760 WLC's with FT enabled & L2 security "None".	To verify whether NEC LifeTouch L/ NEC LaVie client is roamed or not between 2 5760 WLC's.	Passed	
WLJ76S_NEC_17	Roaming NEC LifeTouch L/ NEC LaVie client between 2 5760 WLC's with FT enabled & L2 security "None".	To verify whether NEC LifeTouch L/ NEC LaVie client is roamed or not between 2 5760 WLC's.	Passed	

Multiple RADIUS server per SSID

Logical ID	Title	Description	Status	Defects
WLJ76S_NEC_18	Client(NEC LifeTouch L/ NEC LaVie) association through Primary RADIUS server(ISE) at site level with L2 Security WPA2+Dot1x(PEAP)	To verify whether the Client authentication is done via Primary RADIUS server configured in flexconnect group	Passed	
WLJ76S_NEC_19	Client(NEC LifeTouch L/ NEC LaVie) association through Secondary RADIUS server(ISE)at site level with L2 Security WPA2+Dot1x(PEAP)	To verify whether the Client authentication is done via Secondary RADIUS server configured in flexconnect group	Passed	
WLJ76S_NEC_20	Client(NEC LifeTouch L/ NEC LaVie) association through Primary RADIUS server(ACS) at site level with L2 Security WPA2+Dot1x(PEAP)	To verify whether the Client authentication is done via Primary RADIUS server configured in flexconnect group	Passed	
WLJ76S_NEC_21	Client(NEC LifeTouch L/ NEC LaVie) association through Secondary RADIUS server(ACS) at site level with L2 Security WPA+Dot1x(PEAP)	To verify whether the Client authentication is done via Secondary RADIUS server configured in flexconnect group	Passed	

AAA

Logical ID	Title	Description	Status	Defects
WLJ76S_NEC_22	Performing MAC Filtering with Client(NEC LifeTouch L/ NEC LaVie) registered in ACS server- 7500 Controller	To check whether registered client is successfully authenticated and associated with WLAN enabled MAC Filtering	Passed	
WLJ76S_NEC_23	Performing MAC Filtering with Client(NEC LifeTouch L/ NEC LaVie) registered in ISE server- 7500 Controller	To check whether registered client is successfully authenticated and associated with WLAN enabled MAC Filtering	Passed	

Client SSO

Logical ID	Title	Description	Status	Defects
WLJ76S_NEC_24	Client SSO with Open/Static WEP security -NEC LifeTouch L/ NEC LaVie	To verify whether the Client SSO is successful with Open/Static WEP security type in WLC 7500	Passed	
WLJ76S_NEC_25	Client SSO with web authentication L3Security-NEC LifeTouch L/ NEC LaVie	To verify whether the Client SSO is successful with L3 security type web-authentication in WLC 5508	Passed	
WLJ76S_NEC_26	Client SSO with web authentication L3 Security after session timeout-NEC LifeTouch L/ NEC LaVie	To validate Client SSO with L3 security type web-auth after session timeout	Passed	
WLJ76S_NEC_27	Client SSO with L2 Security WPA/WPA2(local switching)-NEC LifeTouch L/ NEC LaVie	To validate Client SSO with L2 security WPA/WPA2 (local switching)	Passed	

H-REAP Fault tolerance

Logical ID	Title	Description	Status	Defects
WLJ76S_NEC_28	HREAP fault tolerance between connected and standalone AP-2.4 GHZ	To verify whether the client associated to flexconnect AP will get reassociated in case of fault tolerance	Passed	
WLJ76S_NEC_29	HREAP fault tolerance between standalone and connected AP-5 GHZ	To verify whether the client associated to flexconnect AP will get reassociated in case of fault tolerance	Passed	

SSO

Logical ID	Title	Description	Status	Defects
WLJ76S_SSO_01	Configuring SSO via CLI	To configure SSO via CLI and check for the configurations to have taken effect	Passed	
WLJ76S_SSO_02	Configuring SSO via GUI	To configure SSO via GUI and check for the configurations to have taken effect	Passed	
WLJ76S_SSO_03	Configuring SSO from PI	To configure SSO from the PII and check for the configurations to have taken effect	Passed	
WLJ76S_SSO_04	SSO after Active WLC power failure	To check if the SSO works fine when the Active WLC faces power failure and the client configured for dot1x maintained the connectivity.	Passed	
WLJ76S_SSO_05	SSO after Active WLC network failure	To check if the SSO works fine when the Active WLC faces network gateway non-reachability and the client configured for dot1x maintained the connectivity.	Passed	

Logical ID	Title	Description	Status	Defects
WLJ76S_SSO_06	Upgrade controllers in HA setup	To check if the controller Upgrade happens fine without any problem for 2 controllers in HA Setup	Passed	
WLJ76S_SSO_07	AP SSO with Primary / secondary / tertiary HA	To check if the AP SSO works fine when Both the active and standby controllers are configured as Primary with some other controllers configured as secondary and tertiary.	Passed	
WLJ76S_SSO_08	Configuring HA for Mobility	To check if the mobility configurations are applied successfully and works as expected	Passed	

Application Visibility And Control

Logical ID	Title	Description	Status	Defects
WLJ76S_AVC_01	AVC profile for dropping MS-Lync voice and videos on a WLAN	To create an AVC profile for dropping lync voice and videos and testing the working of the same.	Passed	
WLJ76S_AVC_02	AVC profile with changed DSCP value for ms-lync video and voice services	To create an AVC profile with rules created for ms-lync voice and videos with changed DSCP values and verify if the monitor clients show the correct dscp value for the same thus overriding the QOS already set in the WLAN	Passed	
WLJ76S_AVC_03	AVC Profile to mark an application , say ms-lync	To create an AVC profile with rules created for ms-lync voice and videos with marking it and verify if the monitor clients show the correct marked value for the same.	Passed	

Logical ID	Title	Description	Status	Defects
WLJ76S_AVC_04	Viewing the traffic through AVC in PI	To configure a AVC profile, Map it to WLAN and verify the effect of AVC on the passing traffic in that WLAN from PI	Passed	
WLJ76S_AVC_05	Application usage per User / Per WLAN	To view the traffic passing through a WLAN with AVC from the PI on a Per User & Per WLAN basis	Passed	
WLJ76S_AVC_06	Configure AVC from the CLI	To configure an AVC profile and apply it to a WLAN through CLI	Passed	
WLJ76S_AVC_07	AVC to block facebook , youtube etc.	To configure an AVC profile for blocking Facebook, Youtube and apply it to a WLAN through CLI	Passed	

Local Policy

Logical ID	Title	Description	Status	Defects
WLJ76S_Policy_01	Policy mapping to a WLAN	To check if a local policy can be mapped to a WLAN successfully	Passed	
WLJ76S_Policy_02	Uploading the configuration after mapping policy to the WLAN	To check if the uploaded configuration file has the Configured Policy present.	Passed	
WLJ76S_Policy_03	Downloading the uploaded configuration file to the controller after a policy is mapped to a WLAN	To check if the WLAN mapping is unaltered after downloading the same Uploaded file to the controller	Passed	
WLJ76S_Policy_04	Configuring Local profile through CLI	To configure a local policy and apply it to WLAN through Command Line Interface. Also check the working the proper working of it.	Passed	

Logical ID	Title	Description	Status	Defects
WLJ76S_Policy_05	Local Profiling in the controllers on the same mobility group for roaming	To check if roaming within Mobility group occurs fine when the controllers in the Mobility groups have same match criteria & actions.	Passed	
WLJ76S_Policy_06	RADIUS Profiling when Local Profiling is configured	To check if RADIUS profiling is not allowed in a WLAN which is already configured with Local Profiling	Passed	
WLJ76S_Policy_07	Configure maximum number of Policies on a single WLAN	To apply a maximum of 16 profiles to a WLAN and try to exceed the maximum count too	Passed	
WLJ76S_Policy_08	Profiling when APs are in Local mode	To apply a local profile to a WLAN when the APs supporting the WLAN are in Local mode and checking for the working of the profiles	Passed	
WLJ76S_Policy_09	Profiling when APs are in Flex connect mode	To apply a local profile to a WLAN when the APs supporting the WLAN are in FlexConnect mode and checking for the working of the profiles	Passed	
WLJ76S_Policy_10	Profiling for different device types such as Windows 7 client, Apple MacBook , Iphone	To create variour profiles for different device types, apply it to a WLAN and check the working of it individually.	Passed	

PI HA

Logical ID	Title	Description	Status	Defects
WLJ76S_PI_HA_01	PI HA- When primary server is down(HW failure) and Failover type as "Manual"	To check whether PI has been switchover to the secondary when there is a primary server(HW) failure-failover type as "Manual"	Passed	

Logical ID	Title	Description	Status	Defects
WLJ76S_PI_HA_02	PI HA- When primary server is down(HW failure) and Failover type as "Automatic"	To check whether PI has been switchover to the secondary when there is a primary server(HW) failure-failover type as "Automatic"	Passed	
WLJ76S_PI_HA_03	PI HA- When primary server is down(Network failure) and Failover type as "Manual"	To check whether PI has been switchover to the secondary when there is a primary server(NW) failure-failover type as "Manual"	Passed	
WLJ76S_PI_HA_04	PI HA- When primary server is down(Network failure) and Failover type as "Manual"	To check whether PI has been switchover to the secondary when there is a primary server(NW) failure-failover type as "Automatic"	Passed	
WLJ76S_PI_HA_05	PI HA- Failback to Primary server once it has been recovered from HW failure	To check whether the failback operation is successful after the primary server has been recovered from HW failure	Passed	
WLJ76S_PI_HA_06	PI HA- Failback to Primary server once it has been recovered from NW failure	To check whether the failback operation is successful after the primary server has been recovered from NW failure	Passed	

HA on Cat 3850 switch

Logical ID	Title	Description	Status	Defects
WLJ76S_3850_HA_01	Bringing the HA pair up on Cat 3850 switch	To verify whether High Availability has been established between Cat 3850 switches	Passed	
WLJ76S_3850_HA_02	Upgrading the Cat 3850 switch in HA pair	To check the upgrading of image is successful in both Active and Standby switch	Passed	
WLJ76S_3850_HA_03	Configuration sync between the switches	To check the config sync between the switches in stacking	Passed	

Logical ID	Title	Description	Status	Defects
WLJ76S_3850_HA_04	Incremental Config sync between HA pair	To check the incremental config sync between the stacking switches	Passed	
WLJ76S_3850_HA_05	"Show redundancy states" command in CLI	To verify whether the command "show redundancy states" displays the output correctly via CLI	Passed	
WLJ76S_3850_HA_06	Redundancy States display via GUI	To verify whether the redundancy states are displayed properly via GUI	Passed	

MSE HA

Logical ID	Title	Description	Status	Defects
WLJ76S_MSE_HA_01	MSE system hardware shutdown in Direct Connect Link deployment	To verify whether MSE HA failover and fail back works when MSE system hardware shutdown in Direct Connect Link deployment.	Failed	CSCum12763
WLJ76S_MSE_HA_01	MSE system hardware shutdown in Non-Direct Connect Link deployment	To verify whether MSE HA failover and fail back works when MSE system hardware shutdown in Non-Direct Connect Link deployment.	Failed	CSCum12763
WLJ76S_MSE_HA_02	MSE network shutdown in Direct Connect Link deployment	To verify whether MSE HA failover and fail back works when MSE network shutdown in Direct Connect Link deployment.	Failed	CSCum12763
WLJ76S_MSE_HA_02	MSE network shutdown in Direct Non-Connect Link deployment	To verify whether MSE HA failover and fail back works when MSE network shutdown in Non-Direct Connect Link deployment.	Failed	CSCum12763

Fix verification

Logical ID	Title	Description	Status	Defects
WLJ76S_FV_01	Policy mapping to a WLAN	To check if a local policy can be mapped to a WLAN successfully	Passed	
WLJ76S_FV_02	Uploading the configuration after mapping policy to the WLAN	To check if the uploaded configuration file has the Configured Policy present.	Passed	
WLJ76S_FV_03	Downloading the uploaded configuration file to the controller after a policy is mapped to a WLAN	To check if the WLAN mapping is unaltered after downloading the same Uploaded file to the controller	Passed	
WLJ76S_FV_04	AVC profile for dropping ms-lync voice and videos on a WLAN	To create an AVC profile for dropping lync voice and videos and testing the working of the same.	Passed	
WLJ76S_FV_05	AVC profile with changed DSCP value for ms-lync video and voice services	To create an AVC profile with rules created for ms-lync voice and videos with changed DSCP values and verify if the monitor clients show the correct dscp value for the same thus overriding the QOS already set in the WLAN	Passed	

702 AP

Logical ID	Title	Description	Status	Defects
WLJ76S_702AP_01	Joining 702 AP to all Controllers	To verify whether 702 AP is joined or not with Controllers.	Passed	
WLJ76S_702AP_02	Associating a client to a WLC using 702 AP (Local Mode) with L2 Security - WEP	To verify whether client gets connected or not to a WLC using 702 AP with L2 Security - WEP	Passed	

Logical ID	Title	Description	Status	Defects
WLJ76S_702AP_03	Associating a client to a WLC using 702 AP (Local Mode) with L2 Security - WPA+WPA2-PSK	To verify whether client gets connected or not to a WLC using 702 AP with L2 Security - WPA2+PSK	Passed	
WLJ76S_702AP_04	Associating a client to a WLC using 702 AP (Local Mode) with L2 Security -802.1x	To verify whether client gets connected or not to a WLC using 702 AP with L2 Security - 802.1x	Passed	
WLJ76S_702AP_05	Associating a client to a WLC using 702 AP (Flexconnect Mode) with L2 Security - WEP	To verify whether client gets connected or not to a WLC using 702 AP with L2 Security - WEP	Passed	
WLJ76S_702AP_06	Associating a client to a WLC using 702 AP (Flexconnect Mode) with L2 Security - WPA+WPA2-PSK	To verify whether client gets connected or not to a WLC using 702 AP with L2 Security - WPA2+PSK	Passed	
WLJ76S_702AP_07	Associating a client to a WLC using 702 AP (Flexconnect Mode) with L2 Security - 802.1x	To verify whether client gets connected or not to a WLC using 702 AP with L2 Security - 802.1x	Passed	
WLJ76S_702AP_08	Adding 702 AP in Flexconnect group and making it as AAA server for LEAP clients.	To verify whether 702 AP acts as AAA server or not for LEAP clients by enabling Local Authentication check box and LEAP check box in a Flex group.	Passed	
WLJ76S_702AP_09	Adding 702 AP in Flexconnect group and making it as AAA server for PEAP clients.	To verify whether 702 AP acts as AAA server or not for PEAP clients by enabling Local Authentication check box and LEAP check box in a Flex group.	Passed	
WLJ76S_702AP_10	HREAP fault tolerance between connected and standalone AP-2.4 GHz	To verify whether the client associated to flexconnect AP will get reassociated in case of fault tolerance	Passed	

Logical ID	Title	Description	Status	Defects
WLJ76S_702AP_11	HREAP fault tolerance between standalone and connected AP-2.4 GHz	To verify whether the client associated to flexconnect AP will get reassociated in case of fault tolerance	Passed	
WLJ76S_702AP_12	HREAP fault tolerance between connected and standalone AP-2.4 GHz	To verify whether the client associated to flexconnect AP will get reassociated in case of fault tolerance	Passed	
WLJ76S_702AP_13	HREAP fault tolerance between standalone and connected AP-2.4 GHz	To verify whether the client associated to flexconnect AP will get reassociated in case of fault tolerance	Passed	
WLJ76S_702AP_14	11r Client Association with AKM PSK - FlexConnect Central Switch	To verify client's initial association to a wlan with 11r enabled with ft-psk AKM Suite in flexconnect central switching.	Passed	
WLJ76S_702AP_15	11r Client Association with AKM PSK - FlexConnect Local Switch Central Auth	Verify client's initial association to a wlan with 11r enabled with ft-psk AKM Suite in flexconnect local switch central auth.	Passed	
WLJ76S_702AP_16	Client association through Primary RADIUS server(ISE) at site level with L2 Security WPA2+Dot1x(PEAP)	To verify whether the Client authentication is done via Primary RADIUS server configured in flexconnect group	Passed	
WLJ76S_702AP_17	Client association through Secondary RADIUS server(ISE)at site level with L2 Security WPA2+Dot1x(PEAP)	To verify whether the Client authentication is done via Secondary RADIUS server configured in flexconnect group	Passed	
WLJ76S_702AP_18	Client association through Primary RADIUS server(ACS) at site level with L2 Security WPA2+Dot1x(PEAP)	To verify whether the Client authentication is done via Primary RADIUS server configured in flexconnect group	Passed	

Logical ID	Title	Description	Status	Defects
WLJ76S_702AP_19	Client association through Secondary RADIUS server(ACS) at site level with L2 Security WPA+Dot1x(PEAP)	To verify whether the Client authentication is done via Secondary RADIUS server configured in flexconnect group	Passed	
WLJ76S_702AP_20	Associating client -L3 security "Web-Auth"	To check whether the client is associated successfully or not into the network through Web-Auth	Passed	

Related Documentation

ACS Installation Guide

http://www.cisco.com/en/US/partner/docs/net_mgmt/cisco_secure_access_control_system/5.3/user/guide/introd.html

ISE User Guide

http://www.cisco.com/en/US/docs/security/ise/1.2/user_guide/ise_overview.html

NCS 1.1 Configuration Guide

http://www.cisco.com/en/US/docs/net_mgmt/prime/infrastructure/1.2/release/notes/cpi_rm.html

PI 1.4 User Guide

http://www.cisco.com/en/US/docs/wireless/prime_infrastructure/1.4/quickstart/guide/cpi_qsg_1_4.html

WLC 7.5 Configuration Guide

http://www.cisco.com/en/US/docs/wireless/controller/7.5/config_guide/b_cg75.html

MSE Reference Guide

http://www.cisco.com/en/US/docs/wireless/mse/3310/quick/guide/MSE3310_GSG.html

CT5760 Controller Deployment Guide

http://www.cisco.com/en/US/docs/wireless/technology/5760_deploy/Supported_Features.html

Cisco Catalyst 3850 Switch Deployment Guide

http://www.cisco.com/en/US/prod/collateral/switches/ps5718/ps12686/deployment_guide_c07-727067.html