



Test Results for Cisco Unified Wireless LAN Test 7.3 for Japan (Release 7.3.101.0)

First Published: July 19, 2012

Last Modified: October 04, 2012

Americas Headquarters

Cisco Systems, Inc.
170 West Tasman Drive
San Jose, CA 95134-1706
USA
<http://www.cisco.com>
Tel: 408 526-4000
800 553-NETS (6387)
Fax: 408 527-0883

Text Part Number: OL-27635-01



CONTENTS

CHAPTER 1

Cisco Wireless LAN Solution Test 1

Cisco Wireless LAN Solution Test 1

CHAPTER 2

Test Topology and Environment Matrix 3

Test Topology 3

Environment Matrix 4

What's New? 5

Regression Features 5

Resolved Caveats 6

Open Caveats 6

CHAPTER 3

Test Results Summary for Cisco Unified Wireless LAN Test 7.3 for Japan (Release 7.3.101.0) 9

Cisco Wireless LAN Test Results - New Features 9

Cisco Wireless LAN Test Results - Regression Features 68

Cisco Wireless LAN Test Results - Failed Test Results 76

Related Documentation 78



CHAPTER 1

Cisco Wireless LAN Solution Test

- [Cisco Wireless LAN Solution Test, page 1](#)

Cisco Wireless LAN Solution Test

Cisco Wireless LAN Solution Test, an integral part of the enterprise wireless solution, is a program that validates and tests, various Cisco Wireless Products and Features. This is achieved by testing the latest versions of Cisco wireless products.

Cisco Wireless LAN Solution Test for Japan, in turn is an add-on testing at the solution level, where the requirements gathered are specific to Japanese usage and market. The requirements are derived based on the following:

- New features in 7.3
- Customer found defects in selected wireless products
- High priority scenarios and basic regression features
- Inputs from various teams

The test execution is carried out on selected Cisco Wireless LAN products, which affect the Japanese segment that are prioritized by Cisco Japan team.

The following products are covered in the test execution:

- Wireless LAN Controller 5508
- Wireless LAN Controller 2500
- Wireless LAN Flex Controller 7500
- Virtual Controller
- Access Point 3500
- Access Point 1042
- Access Point 1142
- Access Point 3600
- Network Control System

- MSE Virtual Appliance
- ISE Virtual Appliance
- Cisco Secure ACS
- WiSM2 Controller

Acronyms

Acronym	Description
ACS	Access Control Server
CAPWAP	Control and Provisioning of Wireless Access Point
CCX	Cisco Compatible Extensions
CDP	Cisco Discovery Protocol
CKIP	Cisco Key Integrity Protocol
DTIM	Delivery Traffic Indication Map
EAP	Extensible Authentication Protocol
H-REAP	Hybrid Remote Edge Access Point
ISE	Identity Service Engine
LWAPP	Lightweight Access Point Protocol
MSE	Mobility Service Engine
NCS	Network Control System
NMSP	Network Mobility Services Protocol
PEAP	Protected Extensible Authentication Protocol
PPPoE	Point-to-Point Protocol over Ethernet
PSK	Pre-shared Key
RRM	Radio Resource Management
SSID	Service Set Identifier
WEP	Wired Equivalent Privacy
WiSM	Wireless Service Module
WLAN	Wireless LAN
WLC	Wireless LAN Controller
WPA	Wi-Fi Protected Access



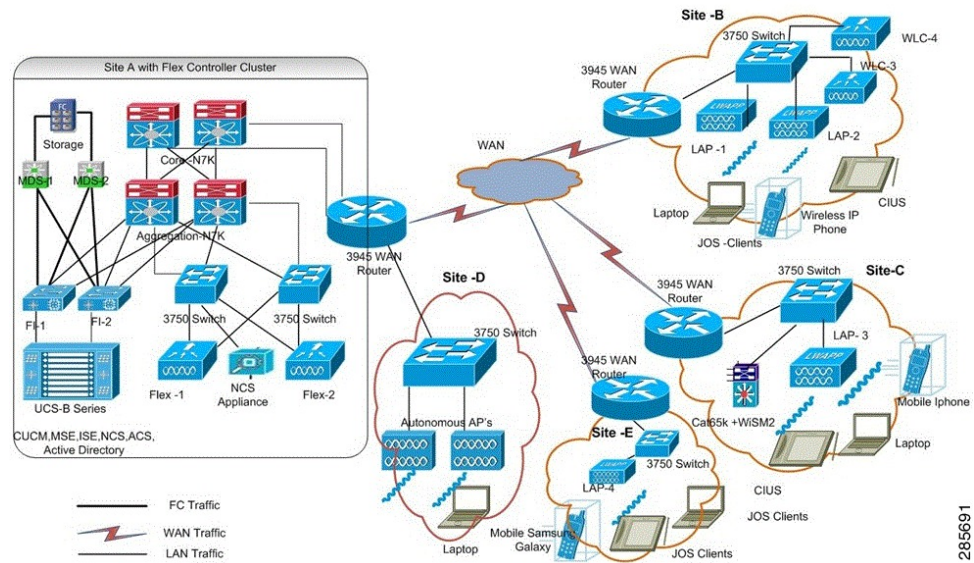
CHAPTER 2

Test Topology and Environment Matrix

- Test Topology, page 3
- Environment Matrix, page 4
- What's New?, page 5
- Regression Features, page 5
- Resolved Caveats, page 6
- Open Caveats, page 6

Test Topology

Figure 1: Topology in Use



Environment Matrix

Category	Component	Version
Controller	Wireless LAN Controller 5508	7.3.101.0
	Wireless LAN Controller 2500	7.3.101.0
	Flex Controller 7500	7.3.101.0
	Virtual Controller	7.3.101.0
	WiSM2 Controller	7.3.101.0
Application	NCS (Physical, VM)	1.2.0.103
	MSE (VM)	7.3.101.0
	ISE (VM)	1.1.1.268
	Secure ACS (VM)	5.3.0.40.5
Call Control	Unified Communication Manager	8.6(2)
Access Point	Cisco AP 1142	15.2
	Cisco AP 3500	15.2
	Cisco AP 1042	15.2
	Cisco AP 3600	15.2
Client	Japanese Operating System	Windows XP Professional
		Windows 7 Enterprise
	Cius (JP Locale)	9.2(2)
	iPhone 4 (JP Locale)	5.0(9A334)
	Samsung Galaxy-II (JP Locale)	2.3.3
	Apple MacBook Pro (JP Locale)	10.6.7
	Wireless IP Phone 7921G (JP Locale)	1.4(2)
	Wireless IP Phone 7925G (JP Locale)	1.4(2)
Wireless IP Phone 7926G (JP Locale)	1.4(2)	
Active Directory	AD	Windows 2008 R2 Enterprise
Browsers	Internet Explorer Japanese	8, 9
	Mozilla Firefox Japanese	13.0.1
	Google Chrome (JP)	20

Category	Component	Version
Chipset	5300 AGN	14.3.2.1
	Airport Extreme	5.5.2(552.11)
Switch	Cisco 3750 Switch	15
	Cisco Cat 6509-E	12.2
Laptop	Lenovo T400	

What's New?

New Features

The following features are new in this release:

- AP SSO
- AP PPPoE Submode
- NAT/PAT
- MTU/TCP-MSS Adjustment
- RADIUS Fallback
- PPPoE Path Through from Wi-Fi clients
- WGB Support in FlexConnect
- Licensing
- 802.11r
- Virtual Controller
- MSE CleanAir
- ISE Profiling



Note

WCS is not supported from the release 7.2

http://www.cisco.com/en/US/docs/wireless/ncs/1.1/release/notes/NCS_RN1.1.html#wp83675

Regression Features

- MAC or 1x + dynamic-WEP
- MAC or WPA2-PEAP
- MAC or WPA2-PSK

- CleanAir
- Layer 3 Security
- Layer 2 Security
- NCS Maps
- Autonomous to LWAPP Migration
- Link Aggregation Mode
- High Availability
- Roaming
- AAA
- Flex Connect Enhancements
- H-REAP Fault Tolerance
- Client Limits per WLAN
- Copy and Replace
- RADIUS Session Timeout - Fix Verification

Resolved Caveats

The following are the resolved caveats:

Defect ID	Defect Description	Fixed-in Version
CSCua73622	Changes in NCS is not reflecting in the MAC Filter parameters of WLC	1.2
CSCua54154	Showing all controller details in respective controller page	1.2
CSCua59528	Not able to delete the alarms in NCS	1.2
CSCua62303	Long progress for changing the status in NCS alarms	1.2
CSCua62487	Auto-provision Filter Delete alert message is not working properly	1.2
CSCua59394	NCS - Unable to sort columns in Unclassified/Malicious Rogue APs	1.2
CSCua88361	NCS Physical appliance versus Virtual appliance - Difference in sorting columns	
CSCua73381	WLAN configuration - WEP is not synced in the ACTIVE and STANDBY controllers	7.3

Open Caveats

Open caveats describe the possible unexpected behaviors that you may encounter.

Defect ID	Defect Description	Version to be Fixed
CSCua67920	NCS shows the IP address of the radius server in reverse	
CSCua74946	Not able to run and save the report when providing JP char	1.2
CSCua54977	Unable to swap IP address while configuring redundancy port	7.3
CSCua67156	Alignment of Show commands in CLI is not proper	
CSCua84494	Failed to delete the JP char AP group in WLC	7.3
CSCua86046	All WLAN profiles get associated when sending JP AP group	
CSCua60391	Building Map dimensions is not reflecting properly in NCS	1.2
CSCua78623	NCS Events Troubleshoot (ping, traceroute, run sh cmd) is not working	
CSCtw53357	Timestamp error in the preset filter in the Alarms & Events page	1.2
CSCub48014	Long progress for email notification after saving	1.2
CSCub28914	Static IP given to client can ping AP BVI in different VLAN	7.4
CSCub42439	AP sends CAPWAP control frame to the client improperly	
CSCub60662	Link test fails for Windows 7 Client with 6300 AGN	
CSCub67276	Misleading Progress Bar for the Alarms page while deleting	
CSCub10213	In the Condition page "Selected Campus" appears in all the pages	

Open Caveats



CHAPTER 3

Test Results Summary for Cisco Unified Wireless LAN Test 7.3 for Japan (Release 7.3.101.0)

- [Cisco Wireless LAN Test Results - New Features, page 9](#)
- [Cisco Wireless LAN Test Results - Regression Features, page 68](#)
- [Cisco Wireless LAN Test Results - Failed Test Results, page 76](#)
- [Related Documentation, page 78](#)

Cisco Wireless LAN Test Results - New Features

Virtual Controller

Logical ID	Feature Tested	Title	Description	Status	Defect
WirelessJ73vWLCS.005	Virtual Controller	Client association with WLC, AP - B and G radio policy	To verify whether a client can be registered and connected to the network.	Passed	
WirelessJ73vWLCS.008	Virtual Controller	AP failover from vWLC to physical controller	To verify whether AP can be switched over from vWLC to physical controller.	Passed	
WirelessJ73vWLCS.010	Virtual Controller	Connecting laptop to Wi-Fi network using Dot1x	To verify whether the client can be connected to the wireless network.	Passed	

Logical ID	Feature Tested	Title	Description	Status	Defect
WirelessJ73vWLCS.011	Virtual Controller	Verify vWLC port admin mode up/down status	To verify whether vWLC ports can be made down and up.	Passed	
WirelessJ73vWLCS.013	Virtual Controller	Cius client with WPA2	To verify whether the client can be connected to the network in which WPA2 is enabled.	Passed	
WirelessJ73vWLCS.014	Virtual Controller	Laptop client with WPA2	To verify whether the client can be connected to the network in which WPA2 is enabled.	Passed	
WirelessJ73vWLCS.015	Virtual Controller	Verification of vWLC Telnet/SSH with paging disabled	To verify whether vWLC can be accessed through Telnet and SSH connections.	Passed	
WirelessJ73vWLCS.017	Virtual Controller	Verification of vWLC GUI with paging disabled	To verify whether vWLC can be accessed through MGMT GUI.	Passed	
WirelessJ73vWLCS.021	Virtual Controller	Verification of vWLC configuration update / save / reboot / validation	To verify whether vWLC configurations are unbroken after multiple updates and reboot.	Passed	
WirelessJ73vWLCS.022	Virtual Controller	Verify client association in FlexConnect mode	To verify whether the client gets associated with an AP in the FlexConnect mode.	Passed	
WirelessJ73vWLCS.023	Virtual Controller	Verify client central switched traffic in FlexConnect AP	To verify whether the client gets associated with a WLAN configured with central switching.	Passed	

Logical ID	Feature Tested	Title	Description	Status	Defect
WirelessJ73vWLCS.024	Virtual Controller	H-REAP local switching with B, G radios	To verify whether the client gets associated with a WLAN configured with local switching.	Passed	
WirelessJ73vWLCS.025	Virtual Controller	Verify client association in web auth	To verify whether the client can be connected to the network in which web auth is enabled.	Passed	
WirelessJ73vWLCS.028	Virtual Controller	Connecting the client to Wi-Fi network with MAC Filtering - Any radio policy	To verify whether the client can be connected to a network in which MAC Filtering is enabled.	Passed	
WirelessJ73vWLCS.029	Virtual Controller	Connecting the client to Wi-Fi network with MAC Filtering - B or G radio policy	To verify whether the client can be connected to a network in which MAC Filtering is enabled.	Passed	
WirelessJ73vWLCS.030	Virtual Controller	Connecting the client to Wi-Fi network with Dot1x security type - Apple iPhone	To verify whether the client can be connected to a network in which Dot1x is enabled.	Passed	
WirelessJ73vWLCS.031	Virtual Controller	Connecting the client to Wi-Fi network with Dot1x security type - Cius client	To verify whether the client can be connected to a network in which Dot1x is enabled.	Passed	
WirelessJ73vWLCS.033	Virtual Controller	Verification of vWLC Maximum Allowed Client	To verify whether vWLC allows association of clients as per the maximum allowed client configuration.	Passed	

Logical ID	Feature Tested	Title	Description	Status	Defect
WirelessJ73vWLCS.036	Virtual Controller	Connecting the client to Wi-Fi network with WPA2 - Data client	To verify whether the client can be connected to a network in which WPA2 is enabled.	Passed	
WirelessJ73vWLCS.037	Virtual Controller	Connecting the client to Wi-Fi network with Static WEP - Data client	To verify whether the client can be connected to a network with the security type, WEP.	Passed	
WirelessJ73vWLCS.038	Virtual Controller	Connecting the client to Wi-Fi network with WEP - Wireless IP phone	To verify whether the client can be connected to a network with the security type, WEP.	Passed	
WirelessJ73vWLCS.045	Virtual Controller	Connecting the client to Wi-Fi network with Pass-through - iPhone	To verify whether the client can be connected to a network with the security type, Pass-through.	Passed	
WirelessJ73vWLCS.046	Virtual Controller	L2 roaming and traffic flow	To verify whether the client can be roamed over from one WLC to another.	Passed	
WirelessJ73vWLCS.047	Virtual Controller	Client association with local switching - iPhone	To verify whether the client can be connected to a network in which local switching is enabled.	Passed	
WirelessJ73vWLCS.050	Virtual Controller	Traps verification in NCS	To verify whether traps can be sent to NCS.	Passed	
WirelessJ73vWLCS.052	Virtual Controller	Associate the client after adding the AP into the FlexConnect AP group	To verify whether the client can be connected to the network.	Passed	

Logical ID	Feature Tested	Title	Description	Status	Defect
WirelessJ73vWLCS.056	Virtual Controller	AP register - Traps	To verify whether traps can be recorded when registering the AP.	Passed	
WirelessJ73vWLCS.057	Virtual Controller	AP interface up/down - Traps	To verify whether traps can be recorded when changing the AP state.	Passed	
WirelessJ73vWLCS.058	Virtual Controller	AAA traps - Traps	To verify whether traps can be recorded when using the AAA server.	Passed	

WGB FlexConnect

Logical ID	Feature Tested	Title	Description	Status	Defect
WirelessJ73WGB_FLEXS.001	WGB FlexConnect	WGB association, WGB client registration through FlexConnect AP in connected mode	To verify successful association of WGB and successful registration of WGB clients to the controller through the FlexConnect AP.	Passed	
WirelessJ73WGB_FLEXS.002	WGB FlexConnect	WGB association, WGB client registration through FlexConnect AP in standalone mode	To verify successful association of WGB and successful registration of WGB clients to the controller through the FlexConnect AP in standalone mode.	Passed	

Logical ID	Feature Tested	Title	Description	Status	Defect
WirelessJ73WGB_FLEXS.004	WGB FlexConnect	WGB association through local authenticated WLAN	To verify whether the WGB can be associated with the FlexConnect through local authenticated WLAN.	Passed	
WirelessJ73WGB_FLEXS.006	WGB FlexConnect	WGB dissociation from the controller	To verify whether the WGB, when deleted, is dissociated from the controller.	Passed	
WirelessJ73WGB_FLEXS.007	WGB FlexConnect	WGB client dissociation from the FlexConnect in connected mode	To verify whether the WGB dissociates from the FlexConnect AP when initiated in WGB.	Passed	
WirelessJ73WGB_FLEXS.008	WGB FlexConnect	WGB client dissociation from the FlexConnect in standalone mode	To verify whether the WGB dissociates from the FlexConnect in standalone mode.	Passed	
WirelessJ73WGB_FLEXS.009	WGB FlexConnect	WGB client registration with the FlexConnect in standalone mode to connected mode	To verify whether the WGB client registration from standalone mode to connected mode is successful.	Passed	
WirelessJ73WGB_FLEXS.012	WGB FlexConnect	WGB client dissociation from FlexConnect AP 1142 in connected mode	To verify whether the WGB clients deregister from the FlexConnect AP after WGB dissociation.	Passed	

Logical ID	Feature Tested	Title	Description	Status	Defect
WirelessJ73WGB_FLEXS.016	WGB FlexConnect	WGB client dissociation from FlexConnect AP 3500 in connected mode	To verify whether the WGB clients deregister from the FlexConnect AP after WGB dissociation.	Passed	
WirelessJ73WGB_FLEXS.020	WGB FlexConnect	WGB client dissociation from FlexConnect AP 3600 in connected mode	To verify whether the WGB clients deregister from the FlexConnect AP 3600 after WGB dissociation.	Passed	
WirelessJ73WGB_FLEXS.023	WGB FlexConnect	FlexConnect AP reload in connected mode when WGB is associated - Central auth locally switched	To verify whether WGB and WGB clients reassociate with the controller after FlexConnect AP reloads.	Passed	
WirelessJ73WGB_FLEXS.024	WGB FlexConnect	FlexConnect AP reload in standalone mode when WGB is associated - Central auth locally switched	To verify whether WGB and WGB clients reassociate with the controller after FlexConnect AP reloads.	Passed	
WirelessJ73WGB_FLEXS.026	WGB FlexConnect	WGB client association with WLC 5508	To verify whether the WGB client is successfully associated with the controller 5508.	Passed	
WirelessJ73WGB_FLEXS.027	WGB FlexConnect	WGB client association with WLC 7500	To verify whether the WGB client is successfully associated with the controller 7500.	Passed	

Logical ID	Feature Tested	Title	Description	Status	Defect
WirelessJ73WGB_FLEXS.028	WGB FlexConnect	WGB client reconnects to the secondary controller	To verify whether the WGB client is successfully associated with the secondary controller in the case of primary failover.	Passed	
WirelessJ73WGB_FLEXS.029	WGB FlexConnect	WGB clients roaming to a different FlexConnect on the same controller	To verify whether the WGB client is successfully reassociated with a different FlexConnect after roaming within the controller.	Passed	
WirelessJ73WGB_FLEXS.031	WGB FlexConnect	WGB clients roaming to a foreign controller	To verify whether the WGB client is successfully reassociated with a different FlexConnect after roaming to a foreign controller.	Passed	
WirelessJ73WGB_FLEXS.033	WGB FlexConnect	Wireless WGB client registration to the FlexConnect	To verify whether the wireless WGB client is successfully associated with the FlexConnect.	Passed	
WirelessJ73WGB_FLEXS.034	WGB FlexConnect	Wireless WGB client de-registration from the FlexConnect	To verify whether the wireless WGB client is successfully dissociated from the FlexConnect.	Passed	
WirelessJ73WGB_FLEXS.035	WGB FlexConnect	WLAN DHCP override for WGB clients	To verify whether the WGB and the WGB clients get the IP address for the WLAN from the overridden DHCP.	Passed	

Logical ID	Feature Tested	Title	Description	Status	Defect
WirelessJ73WGB_FLEXS.036	WGB FlexConnect	WGB and WGB client status on session timeout for central authenticated locally switched WLAN	To verify whether the WGB client dissociates after session timeout.	Passed	

Licensing

Logical ID	Feature Tested	Title	Description	Status	Defect
WirelessJ73LicensingS.001	Licensing	HBL permanent base license is installed	To verify whether the honor-based permanent base license installed by the manufacturing team works properly when WLC is up.	Passed	
WirelessJ73LicensingS.003	Licensing	HBL evaluation activate	To verify whether honor-based evaluation license can be activated after the respective EULA is accepted and is ready for use.	Passed	
WirelessJ73LicensingS.005	Licensing	HBL evaluation not accepted	To verify whether honor-based evaluation license cannot be activated after the respective EULA is not accepted.	Passed	
WirelessJ73LicensingS.007	Licensing	HBL active license	To verify whether deactivation of the In-use license changes the state to "not in use" and vice versa.	Passed	

Logical ID	Feature Tested	Title	Description	Status	Defect
WirelessJ73LicensingS.008	Licensing	HBL eval expiry count	To verify whether the countdown for time expiry starts when honor-based evaluation license is activated.	Passed	
WirelessJ73LicensingS.010	Licensing	HBL eval count maintained during upgrade	To verify whether the usage and expiry count for honor-based evaluation is maintained during reboot and upgrade of controller.	Passed	
WirelessJ73LicensingS.011	Licensing	HBL eval count maintained during downgrade	To verify whether the usage and expiry count for honor-based evaluation is maintained during reboot and downgrade of controller.	Passed	
WirelessJ73LicensingS.012	Licensing	HBL adder AP count delete only evaluation present	To verify whether the adder AP count can be deleted only when the evaluation license is present on the controller.	Passed	
WirelessJ73LicensingS.013	Licensing	HBL adder AP count increased	To verify whether a new AP can join the controller when the adder AP count is increased.	Passed	

Logical ID	Feature Tested	Title	Description	Status	Defect
WirelessJ73LicensingS.017	Licensing	HBL overusage adder	To verify whether a message is sent on CLI and GUI, or on syslog in order to flag the user about over usage when the number of APs connected to WLC is more than supported number of APs.	Passed	
WirelessJ73LicensingS.024	Licensing	HBL functionality HA	To verify whether the honor-based licensing for permanent license works in a HA setup.	Passed	
WirelessJ73LicensingS.025	Licensing	HBL functionality eval HA	To verify whether the honor-based licensing for evaluation license works in a HA setup.	Passed	
WirelessJ73LicensingS.026	Licensing	HBL functionality adder AP HA	To verify whether the honor-based licensing for adder license works in a HA setup.	Passed	
WirelessJ73LicensingS.027	Licensing	HBL HA config change on standby	To verify whether any license modification done to HBL on the STANDBY controller after a failover does not have any impact when the primary controller is up.	Passed	

Logical ID	Feature Tested	Title	Description	Status	Defect
WirelessJ73LicensingS.028	Licensing	HBL HA config change on active after failover	To verify that when the AP count license is modified on ACTIVE after a failover from ACTIVE to STANDBY, the HA SKU of STANDBY is modified accordingly after the ACTIVE is up again.	Passed	
WirelessJ73LicensingS.034	Licensing	HBL monitoring lic NCS	To verify whether licenses can be monitored from NCS.	Passed	
WirelessJ73LicensingS.036	Licensing	HBL license install modify old CDK	To verify whether the user is not allowed to install or modify the old CDK-based license from the CLI or GUI, when WLC is running on the 7.3 version. The user should get an appropriate error message.	Passed	
WirelessJ73LicensingS.037	Licensing	HBL license install modify old cdk	To verify whether the user is not allowed to install or modify the old CDK-based license from the CLI or GUI, when WLC is running on the 7.3 version. The user should get an appropriate error message.	Passed	

Logical ID	Feature Tested	Title	Description	Status	Defect
WirelessJ73LicensingS.038	Licensing	HBL backward compatibility upgrade permanent evaluation adder	To verify whether during the upgrade of the 7500 platform from 7.2 or older version with a CDK-based (permanent + evaluation + adder) license to 7.3 honor-based license, HBL understands the license through CDK and the upgrade is smooth.	Passed	
WirelessJ73LicensingS.039	Licensing	HBL backward compatibility upgrade permanent	To verify whether during the upgrade of the 7500 platform from 7.2 or older version with a CDK-based permanent license to 7.3 honor-based license, HBL understands the license through CDK and the upgrade is smooth.	Passed	

Logical ID	Feature Tested	Title	Description	Status	Defect
WirelessJ73LicensingS.040	Licensing	HBL backward compatibility upgrade then downgraded	To verify whether the HBL AP license count that was added when the CDK-based license was upgraded from version 7.2 or older to version 7.3 is lost when CDK-based license is downgraded again to version 7.2 or older. Only the old CDK-based license must be present after this downgrade.	Passed	
WirelessJ73LicensingS.041	Licensing	To make sure all honor-based CLIs are accounted on TACACS server	To verify whether all the honor-based CLIs are accounted on the TACACS server.	Passed	
WirelessJ73LicensingS.042	Licensing	To make sure license period time displayed in CLI and GUI are same	To verify whether the license period displayed in CLI and GUI are the same.	Passed	

CleanAir - MSE

Logical ID	Feature Tested	Title	Description	Status	Defect
WirelessJ73mse_cleanairS.033	CleanAir	MSE CleanAir: Enabling selected CleanAir features in WLC1 which in turn reflecting in MSE	To verify whether the selected unlicensed interference are detected by WLC1 and are reflected in MSE.	Passed	

Logical ID	Feature Tested	Title	Description	Status	Defect
WirelessJ73mse_cleanairS.034	CleanAir	MSE CleanAir: Enabling selected CleanAir features in WLC1 and WLC2 which in turn reflecting in MSE	To verify whether the selected unlicensed interference are detected by WLC1 and WLC2 and are reflected in MSE.	Passed	
WirelessJ73mse_cleanairS.037	CleanAir	MSE CleanAir: To display the interference in the CleanAir tab in MSE	To verify whether the unlicensed interference is detected under recent security-risk interfaces in the CleanAir tab.	Passed	
WirelessJ73mse_cleanairS.038	CleanAir	MSE CleanAir: To generate report for air quality and check the AQ of APs	To verify the air quality of the APs by generating report in NCS.	Passed	
WirelessJ73mse_cleanairS.039	CleanAir	MSE CleanAir: Neighbor map creation in MSE CLI	To verify whether neighbor map can be successfully created using a command in CLI.	Passed	
WirelessJ73mse_cleanairS.040	CleanAir	MSE CleanAir: Checking neighbor algorithm	To verify whether two MMAPs become neighbors, if an LMAP is placed between the two MMAPs.	Passed	
WirelessJ73mse_cleanairS.041	CleanAir	MSE CleanAir: Report generation for a particular device type	To verify whether report for a particular device type is generated successfully.	Passed	

Logical ID	Feature Tested	Title	Description	Status	Defect
WirelessJ73mse_cleanairS.042	CleanAir	MSE CleanAir: Creating maps using CLI	To verify whether a map can be created successfully from the CLI of MSE.	Passed	
WirelessJ73mse_cleanairS.043	CleanAir	MSE CleanAir: Report generation for a particular device type and from particular location	To verify whether report for a particular device type is successfully generated from the specified location.	Passed	
WirelessJ73mse_cleanairS.044	CleanAir	MSE CleanAir: Report generation for a particular time and particular device type	To verify whether report for a particular device type is successfully generated at the specified time.	Passed	
WirelessJ73mse_cleanairS.045	CleanAir	MSE CleanAir: Report generation for a particular time, location and particular device type	To verify whether report for a particular device type is successfully generated at the specified time and from the specified location.	Passed	
WirelessJ73mse_cleanairS.046	CleanAir	MSE CleanAir: Verifying and configuring interfere notification from the Campus View page	To verify whether the new option, "interfere notification" is displayed in the Campus View page and to verify whether the option works as expected.	Passed	

Logical ID	Feature Tested	Title	Description	Status	Defect
WirelessJ73mse_cleanairS.047	CleanAir	MSE CleanAir: Verifying and configuring interfere notification from the Building View page	To verify whether the new option, "interfere notification" is displayed in the Building View page and to verify whether the option works as expected.	Passed	
WirelessJ73mse_cleanairS.048	CleanAir	MSE CleanAir: Verifying and configuring interfere notification from the Floor View page - Detecting device interference floorwise	To verify whether the new option, "interfere notification" is displayed in the Floor View page and to verify whether the option works as expected.	Passed	
WirelessJ73mse_cleanairS.049	CleanAir	MSE CleanAir: CAS interference notification in the CleanAir Dashboard page	To verify whether the "CAS interference notification" dashboard displays the correct information about the interference device types in the CleanAir Dashboard page.	Passed	
WirelessJ73mse_cleanairS.050	CleanAir	MSE CleanAir: New option CAS notification added in the Alarm Summary page	To verify whether the new option, "CAS notification" added to the Alarm Summary page displays the correct information.	Passed	

Logical ID	Feature Tested	Title	Description	Status	Defect
WirelessJ73mse_cleanairS.051	CleanAir	MSE: Adding virtual controller in NCS and sync up with MSE	To verify whether the virtual controller gets added to the NCS and synchronizes with MSE successfully.	Passed	
WirelessJ73mse_cleanairS.052	CleanAir	MSE CleanAir with virtual controller: Enabling CleanAir on specific AP using virtual controller GUI	To verify whether CleanAir is enabled on specific AP using the virtual controller.	Passed	
WirelessJ73mse_cleanairS.053	CleanAir	MSE CleanAir in virtual controller using NCS: Enabling CleanAir for specific interference in virtual controller using NCS	To verify whether CleanAir is enabled for specific interference in virtual controller using NCS.	Passed	
WirelessJ73mse_cleanairS.054	CleanAir	MSE CleanAir: Configuring device types from the Floor View page	To verify whether device types can be viewed from the Floor View page.	Passed	
WirelessJ73mse_cleanairS.055	CleanAir	MSE CleanAir: Checking notification generation in MSE	To verify whether notifications are generated by MSE.	Passed	

Roaming - 802.11r

Logical ID	Feature Tested	Title	Description	Status	Defect
WirelessJ73.11rS.001	802.11r	New mobility - Over-the-air roaming	To verify whether over-the-air roaming works with the new mobility.	Passed	
WirelessJ73.11rS.002	802.11r	New mobility - Over-the-DS roaming	To verify whether over-the-DS roaming works with the new mobility.	Passed	
WirelessJ73.11rS.007	802.11r	11r client association with AKM PSK - FlexConnect central switch	To verify the initial association of the client with a WLAN in which 11r is enabled with FT-PSK AKM suite in FlexConnect central switching.	Passed	
WirelessJ73.11rS .008	802.11r	11r client association with AKM PSK - FlexConnect local switch central auth	To verify the initial association of the client with a WLAN in which 11r is enabled with FT-PSK AKM suite in FlexConnect local switch central auth.	Passed	
WirelessJ73.11rS .009	802.11r	11r client association with AKM 802.1x - FlexConnect central switching	To verify the initial association of the client with a WLAN in which 11r is enabled with FT 802.1x AKM suite in FlexConnect central switching.	Passed	

Logical ID	Feature Tested	Title	Description	Status	Defect
WirelessJ73.11rS.010	802.11r	11r client association with AKM 802.1x - FlexConnect local switch central auth	To verify the initial association of the client with a WLAN in which 11r is enabled with FT 802.1x AKM suite in FlexConnect local switching with central auth.	Passed	
WirelessJ73.11rS.014	802.11r	Over-the-DS intra-controller roaming - FlexConnect central switch	To verify the fast transition of the client roaming over the DS within the same controller in FlexConnect central switch.	Passed	
WirelessJ73.11rS.015	802.11r	Over-the-DS intra-controller roaming - FlexConnect local switch central auth	To verify the fast transition of the client roaming over the DS within the same controller in FlexConnect local switch central auth.	Passed	
WirelessJ73.11rS.016	802.11r	Over-the-DS intra-controller roaming - FlexConnect central switch VLAN pooling	To verify the fast transition of the client roaming over the DS within the same controller in FlexConnect central switch with VLAN pooling.	Passed	
WirelessJ73.11rS.017	802.11r	Open security over-the-air roaming - Controller	To verify the open security 11r over-the-air roaming.	Passed	
WirelessJ73.11rS.021	802.11r	5508 controller web GUI - Fast transition parameters configuration	To set and unset fast transition parameters (FT enable, over the DS and Reassociation time) using the web GUI in 5508 controller.	Passed	

Logical ID	Feature Tested	Title	Description	Status	Defect
WirelessJ73.11rS.022	802.11r	5508 web GUI - Fast transition WPA2 policy authentication key management	To verify the authentication key management parameters such as dot1x, CCKM, PSK, FT-PSK, FT-dot1x. (FT fields are applicable only when WPA2 is enabled.)	Passed	
WirelessJ73.11rS.027	802.11r	XML upload/download of 11r parameters	To verify whether all the 11r parameters are retained after downloading the uploaded configuration in the controller.	Passed	
WirelessJ73.11rS.031	802.11r	HA config sync	To verify whether 11r-specific CLIs get synced from the ACTIVE controller to the STANDBY controller.	Passed	
WirelessJ73.11rS.036	802.11r	11r client association connecting as 11i with AKM 802.1x configured - WLC 7500	To verify the initial association of the client with a WLAN in which 11r is disabled, and 11i is enabled with 802.1x AKM suite in 7500 controller.	Passed	
WirelessJ73.11rS.040	802.11r	7500 web GUI - Fast transition WPA2 policy authentication key management	To verify the authentication key management parameters such as dot1x, CCKM, PSK, FT-PSK, FT-dot1x. (FT fields are applicable only when WPA2 is enabled.)	Passed	

Logical ID	Feature Tested	Title	Description	Status	Defect
WirelessJ73.11rS.048	802.11r	Roaming of wireless data clients within APs of one FlexConnect group when controller is down	To verify whether the wireless data clients are successfully and seamlessly roaming between the APs of the same FlexConnect group when the controller is down.	Passed	
WirelessJ73.11rS.049	802.11r	Roaming of data clients between APs in same FlexConnect group	To verify the seamless roaming from one AP to another within the same FlexConnect group.	Passed	
WirelessJ73.11rS.050	802.11r	Fast secure roaming	To verify fast secure roaming of clients.	Passed	

ISE Profiling

Logical ID	Feature Tested	Title	Description	Status	Defect
WirelessJ73ISES.001	ISE	ISE - Configuring the probes	To verify whether ISE probes are successfully configured.	Passed	
WirelessJ73ISES.002	ISE	ISE - Creating an endpoint profiling policy	To verify whether an endpoint profiling policy is successfully created.	Passed	
WirelessJ73ISES.003	ISE	ISE - Creating a profiler condition	To verify whether a profiler condition is successfully created.	Passed	
WirelessJ73ISES.004	ISE	ISE - Creating profiler results	To verify whether profiler results are successfully created.	Passed	
WirelessJ73ISES.005	ISE	ISE - Creating an exception action	To verify whether an exception action is successfully created.	Passed	

Logical ID	Feature Tested	Title	Description	Status	Defect
WirelessJ73ISES.006	ISE	ISE - Creating new standard authorization profile	To verify whether a standard authorization profile is successfully created.	Passed	
WirelessJ73ISES.007	ISE	ISE - COA global configuration	To verify whether global COA is successfully configured.	Passed	
WirelessJ73ISES.008	ISE	ISE - To create a Windows agent profile	To verify whether a Windows agent profile is successfully created.	Passed	
WirelessJ73ISES.009	ISE	ISE - Modifying an existing authorization profile	To verify whether an existing authorization profile can be successfully modified.	Passed	
WirelessJ73ISES.010	ISE	ISE - Duplicating an existing authorization profile	To verify whether a duplicate of an existing authorization profile can be created.	Passed	

PPPoE Submode

Logical ID	Feature Tested	Title	Description	Status	Defect
WirelessJ73SPPPOE.019	PPPoE	PPPoE - Associate a client with WPA2 security when AP in PPPoE mode	To verify whether the client gets associated with an AP when WPA2 security is configured.	Passed	
WirelessJ73SPPPOE.020	PPPoE	PPPoE - Checking AP PPPoE configuration after controller reboot - 7500 WLC	To verify whether the AP PPPoE configuration works properly after the controller is rebooted.	Passed	

Logical ID	Feature Tested	Title	Description	Status	Defect
WirelessJ73SPPPOE.021	PPPoE	PPPoE - Checking AP PPPoE configuration after controller reboot - 2504 WLC	To verify whether the AP PPPoE configuration works properly after the controller is rebooted.	Passed	
WirelessJ73SPPPOE.022	PPPoE	PPPoE - Checking AP PPPoE configuration after controller is upgraded	To verify whether the AP PPPoE configuration works properly after the controller is upgraded.	Passed	
WirelessJ73SPPPOE.023	PPPoE	PPPoE - Checking AP PPPoE configuration is restored after WLC image is switched back to previous image	To verify whether the AP PPPoE configuration works properly after the controller image is switched back to the previous image.	Passed	
WirelessJ73SPPPOE.024	PPPoE	PPPoE - Checking AP PPPoE configuration is restored after the primary WLC is switched to other WLC - 2504, WiSM with 1142 AP	To verify whether the AP PPPoE configuration works properly after the primary controller is switched to another WLC.	Passed	
WirelessJ73SPPPOE.025	PPPoE	PPPoE - Associate two APs in 2504 WLC. Associate one client in each AP. Configure HA in AP.	To verify whether the AP PPPoE configuration works properly after the primary controller is switched to another WLC.	Passed	

Logical ID	Feature Tested	Title	Description	Status	Defect
WirelessJ73SPPPOE.026	PPPoE	PPPoE - Associate three wireless IP phones and make conference with PPPoE enabled with WLC and HA configured - 7925, 7921, 7962	To verify whether the three wireless IP phones can make conference calls and whether they get connected even when one WLC fails and switches to another.	Passed	
WirelessJ73SPPPOE.027	PPPoE	PPPoE - Central DHCP processing with FlexConnect local switching	To verify whether the client gets IP address from the central DHCP with FlexConnect local switching.	Passed	
WirelessJ73SPPPOE.028	PPPoE	PPPoE - When client joins with tertiary controller, the AP PPPoE configuration should be restored	To verify whether the client successfully joins the tertiary controller and the AP PPPOE configuration is restored.	Passed	
WirelessJ73SPPPOE.029	PPPoE	PPPoE - AP switching to secondary controller with WLAN enables FlexConnect local switching and central DHCP enabled	To verify whether the client successfully joins the secondary controller with WLAN when FlexConnect local switching and central DHCP are enabled.	Passed	
WirelessJ73SPPPOE.030	PPPoE	PPPoE - AP switching to tertiary controller with WLAN enables FlexConnect local switching and central DHCP enabled	To verify whether the client successfully joins the secondary controller with WLAN when FlexConnect local switching and central DHCP are enabled.	Passed	

Logical ID	Feature Tested	Title	Description	Status	Defect
WirelessJ73SPPPOE.001	PPPoE	PPPoE submode - PPPoE submode on 1042 AP with main mode as FlexConnect in 7500 controller	To verify whether the AP sets up a PPPoE connection to the PPPoE server on boot up, after the AP submode is set to PPPoE.	Passed	
WirelessJ73SPPPOE.002	PPPoE	PPPoE CLI - To check the PPPoE CLIs were able to config in AP console after PPPoE submode is enabled in AP 1042	To verify whether the PPPoE CLIs are able to configure using the AP console after the PPPoE submode is enabled.	Passed	
WirelessJ73SPPPOE.003	PPPoE	PPPoE CLI - To check if client is getting IP from central DHCP after AP changing to FlexConnect mode in 2500 WLC	To verify whether the client IP address is from the central DHCP server, after AP switches over to the FlexConnect mode.	Passed	
WirelessJ73SPPPOE.004	PPPoE	PPPoE CLI - Enable PPPoE in AP using CLI. Enable dialer interface in AP and check if all routes to WLC from AP go via dialer interface.	To verify whether all IP traffic destined to WLC goes via dialer interface.	Passed	
WirelessJ73SPPPOE.005	PPPoE	PPPoE submode - To check PPP show and debug command using remote debug command through WLC	To verify whether the PPP show and debug commands are displayed properly in the AP CLI using the remote debug command in WLC.	Passed	

Logical ID	Feature Tested	Title	Description	Status	Defect
WirelessJ73SPPPOE.006	PPPoE	PPPoE submode - Cius client acquiring IP address from central DHCP server when AP operates in FlexConnect mode - Using 3600 AP and virtual controller	To verify whether the client acquires the IP address from the central DHCP server.	Passed	
WirelessJ73SPPPOE.007	PPPoE	PPPoE submode - iPhone acquiring IP address when AP is in FlexConnect mode from centralized DHCP server - Using 3600 AP and virtual controller	To verify whether the client acquires the IP address from the central DHCP server.	Passed	
WirelessJ73SPPPOE.008	PPPoE	PPPoE submode - Samsung Galaxy acquiring IP address when AP is in FlexConnect mode from centralized DHCP server - Using 3600 AP and virtual controller - Client connects to AP using WEP	To verify whether the client acquires the IP address from the central DHCP server.	Passed	
WirelessJ73SPPPOE.010	PPPoE	PPPoE submode - To check if AP is retaining the configuration after reboot of AP - 1042 AP	To verify whether the AP retains the PPP and PPPoE configurations even after a reboot.	Passed	

Logical ID	Feature Tested	Title	Description	Status	Defect
WirelessJ73SPPPOE.011	PPPoE	PPPoE submode - Configuring authentication protocol in 3600 AP - PAP	To verify whether the authentication protocol, PAP works in AP 3600.	Passed	
WirelessJ73SPPPOE.012	PPPoE	PPPoE submode - Configuring authentication protocol in 3600 AP - CHAP	To verify whether the authentication protocol, CHAP works in AP 3600.	Passed	
WirelessJ73SPPPOE.013	PPPoE	PPPoE submode - Client registered with AAA server for authentication and then communicate with AP which in turn communicates with WLC through PPPoE	To verify whether the client registered with the AAA server for authentication communicates with the AP, which in turn communicates with the WLC through PPPoE.	Passed	
WirelessJ73SPPPOE.014	PPPoE	PPPoE - To check maximum sized packet sent and received through PPP link - Using 3600 AP	To verify whether the maximum-size configured packets match the packets sent and received over the PPP link.	Passed	
WirelessJ73SPPPOE.015	PPPoE	PPPoE - PPPoE link is down and check if Cius client connect to locally switched LAN	To verify whether Cius is connected to the locally switched LAN when the PPPoE link is down.	Passed	
WirelessJ73SPPPOE.016	PPPoE	PPPoE - PPPoE link is down and check if iPhone client connect to locally switched LAN - Using 5508 WLC and 3500 AP	To verify whether iPhone is connected to the locally switched LAN when the PPPoE link is down.	Passed	

Logical ID	Feature Tested	Title	Description	Status	Defect
WirelessJ73SPPPOE.017	PPPoE	PPPoE - Show commands of PPPoE	To verify whether the PPPoE show commands are working properly in AP CLI.	Passed	
WirelessJ73SPPPOE.018	PPPoE	PPPoE - Connection between AP and WLC is down but PPPoE tunnel is up, check if clients can survive and check if additional clients can join	To verify whether additional clients can join when AP and WLC are down and the PPPoE tunnel is up.	Passed	

PPPoE Path Through Wi-Fi Client

Logical ID	Feature Tested	Title	Description	Status	Defect
WirelessJ73SPPPOE_WIFI.001	PPPoE Path Through Wi-Fi Client	PPPoE Path Through from Wi-Fi client - Central switching (WEP - L2 Security)	To verify whether the PPPoE path is established from a Wi-Fi client through the L2 security, WEP (central switching).	Passed	
WirelessJ73SPPPOE_WIFI.002	PPPoE Path Through Wi-Fi Client	PPPoE Path Through from Wi-Fi client - Local switching (WEP - L2 Security)	To verify whether the PPPoE path is established from a Wi-Fi client through the L2 security, WEP (local switching).	Passed	
WirelessJ73SPPPOE_WIFI.003	PPPoE Path Through Wi-Fi Client	PPPoE Path Through from Wi-Fi client - Central switching (WPA/WPA2 - L2 Security)	To verify whether the PPPoE path is established from a Wi-Fi client through the L2 security, WPA/WPA2 (central switching).	Passed	

Logical ID	Feature Tested	Title	Description	Status	Defect
WirelessJ73SPPPOE_WIFI.004	PPPoE Path Through Wi-Fi Client	PPPoE Path Through from Wi-Fi client - Local switching (WPA/WPA2 - L2 Security)	To verify whether the PPPoE path is established from a Wi-Fi client through the L2 security, WPA/WPA2 (local switching).	Passed	
WirelessJ73SPPPOE_WIFI.005	PPPoE Path Through Wi-Fi Client	PPPoE Path Through from Wi-Fi client - Central switching (Web-auth - L3 Security)	To verify whether the PPPoE path is established from a Wi-Fi client through the L3 security, Web-auth (central switching).	Passed	
WirelessJ73SPPPOE_WIFI.006	PPPoE Path Through Wi-Fi Client	PPPoE Path Through from Wi-Fi client - Local switching (Web-auth - L3 Security)	To verify whether the PPPoE path is established from a Wi-Fi client through the L3 security, Web-auth (local switching).	Passed	
WirelessJ73SPPPOE_WIFI.007	PPPoE Path Through Wi-Fi Client	PPPoE Path Through from Wi-Fi client (Cius) - Central switching	To verify whether the PPPoE path is established from a Cius (Wi-Fi client) - Central switching.	Passed	
WirelessJ73SPPPOE_WIFI.008	PPPoE Path Through Wi-Fi Client	PPPoE Path Through from Wi-Fi client (Cius) - Local switching	To verify whether the PPPoE path is established from a Cius (Wi-Fi client) - Local switching.	Passed	
WirelessJ73SPPPOE_WIFI.009	PPPoE Path Through Wi-Fi Client	PPPoE Path Through from Wi-Fi client (Samsung Galaxy) -Central switching	To verify whether the PPPoE path is established from a Samsung Galaxy (Wi-Fi client) - Central switching.	Passed	

Logical ID	Feature Tested	Title	Description	Status	Defect
WirelessJ73SPPPOE_WIFI.010	PPPoE Path Through Wi-Fi Client	PPPoE Path Through from Wi-Fi client (Samsung Galaxy)-Local switching	To verify whether the PPPoE path is established from a Samsung Galaxy (Wi-Fi client) - Local switching.	Passed	

RADIUS Session Timeout - Fix Verification

Logical ID	Feature Tested	Title	Description	Status	Defect
WirelessJ73RADIUS.001	RADIUS Fallback	To validate RADIUS session timeout using ACS	To validate RADIUS session timeout using ACS.	Passed	
WirelessJ73RADIUS.002	RADIUS Fallback	To validate RADIUS session timeout using ISE	To validate RADIUS session timeout using ISE.	Passed	

RADIUS Fallback

Logical ID	Feature Tested	Title	Description	Status	Defect
WirelessJ73SRadius_001	RADIUS Fallback	ACS fallback on MGMT login page	To verify the MGMT login with RADIUS user login credentials.	Passed	
WirelessJ73SRadius_002	RADIUS Fallback	Trap logs in WLC when ACS 1 is down	To verify the traps in the controller when the ACS server 1 is down.	Passed	
WirelessJ73SRadius_003	RADIUS Fallback	RADIUS fallback in active mode - Data client in AP local mode	To verify RADIUS fallback in the active mode.	Passed	
WirelessJ73SRadius_004	RADIUS Fallback	RADIUS fallback in passive mode	To verify RADIUS fallback in the passive mode.	Passed	

Logical ID	Feature Tested	Title	Description	Status	Defect
WirelessJ73SRadius_005	RADIUS Fallback	Connecting the client when RADIUS fallback is disabled	To verify the client connectivity when RADIUS fallback is disabled.	Passed	
WirelessJ73SRadius_006	RADIUS Fallback	RADIUS fallback feature after WLC reload - Passive mode	To verify whether the fallback feature works after saving and reloading WLC.	Passed	
WirelessJ73SRadius_007	RADIUS Fallback	Fallback in active mode for the client Cius	To verify RADIUS fallback in the active mode.	Passed	
WirelessJ73SRadius_009	RADIUS Fallback	RADIUS fallback feature in AP FlexConnect mode	To verify RADIUS fallback in the FlexConnect mode.	Passed	
WirelessJ73SRadius_010	RADIUS Fallback	RADIUS fallback feature in AP FlexConnect mode (MAC auth)	To verify RADIUS fallback in the FlexConnect mode.	Passed	
WirelessJ73SRadius_011	RADIUS Fallback	RADIUS fallback feature in AP local mode (MAC auth)	To verify RADIUS fallback in the local mode.	Passed	
WirelessJ73SRadius_012	RADIUS Fallback	RADIUS fallback feature in AP FlexConnect mode - WiSM2	To verify RADIUS fallback in the FlexConnect mode.	Passed	
WirelessJ73SRadius_013	RADIUS Fallback	RADIUS fallback feature in AP FlexConnect mode - vWLC	To verify RADIUS fallback in the FlexConnect mode.	Passed	

Logical ID	Feature Tested	Title	Description	Status	Defect
WirelessJ73SRadius_014	RADIUS Fallback	RADIUS fallback feature after changing the secret key	To verify RADIUS fallback after changing the secret key.	Passed	
WirelessJ73SRadius_015	RADIUS Fallback	Client authentication traps in WLC when ACS servers are down	To verify the traps in the controller when the ACS servers are down.	Passed	
WirelessJ73SRadius_016	RADIUS Fallback	Verifying the client connectivity with two RADIUS servers	To verify the client connectivity with two RADIUS servers.	Passed	
WirelessJ73SRadius_017	RADIUS Fallback	RADIUS authentication with maximum allowed clients	To verify the authentication with maximum allowed clients.	Passed	
WirelessJ73SRadius_018	RADIUS Fallback	RADIUS fallback feature in AP local mode - Radio policy A only	To verify RADIUS fallback in the local connect mode with radio policy A.	Passed	
WirelessJ73SRadius_019	RADIUS Fallback	RADIUS fallback feature in AP local mode with radio policy G	To verify RADIUS fallback in the local mode with radio policy G.	Passed	

MAC Authentication

Logical ID	Feature Tested	Title	Description	Status	Defect
WirelessJ73MAC.015	MAC Auth or Dot1x	Authentication and association of clients with MAC Auth or Dot1x - 2500 controller	To verify the authentication and association of the clients when connected to WLANs in which MAC Auth or Dot1x is enabled.	Passed	

Logical ID	Feature Tested	Title	Description	Status	Defect
WirelessJ73MAC.016	MAC Auth or Dot1x	Authentication and association of clients with MAC Auth or Dot1x - 7500 controller	To verify the authentication and association of the clients when connected to WLANs in which MAC Auth or Dot1x is enabled.	Passed	
WirelessJ73MAC.018	MAC Auth or Dot1x	Authentication and association of clients with MAC Auth or Dot1x - Cius	To verify the authentication and association of the clients when connected to WLANs in which MAC Auth or Dot1x is enabled.	Passed	
WirelessJ73MAC.019	MAC Filtering + WPA2+PSK	Authentication and association of clients with MAC Filtering + WPA2+PSK	To verify the authentication and association of the clients when connected to WLANs in which MAC Filtering + WPA2+PSK is enabled.	Passed	
WirelessJ73MAC.020	MAC Filtering + WEP	Authentication and association of clients with MAC Filtering + WEP	To verify the authentication and association of the clients when connected to WLANs in which MAC Filtering + WEP is enabled.	Passed	
WirelessJ73MAC.021	MAC Auth or Dot1x	Enabling MAC Auth or Dot1x without enabling MAC Filtering	To verify whether MAC Auth or Dot1x can be enabled in WLC GUI without enabling MAC Filtering for a WLAN.	Passed	
WirelessJ73MAC.022		Creating a group in ACS server	To verify whether groups can be created in ACS server.	Passed	

Logical ID	Feature Tested	Title	Description	Status	Defect
WirelessJ73MAC.023	AAA	Adding controller details as AAA client - 2500 controller	To verify whether 2500 controller is added as an AAA client.	Passed	
WirelessJ73MAC.024	AAA	Adding controller details as AAA client - WiSM2 controller	To verify whether WiSM2 controller is added as an AAA client.	Passed	
WirelessJ73MAC.025	AAA	Adding clients in AAA server	To verify whether clients are added in ACS server.	Passed	
WirelessJ73MAC.026	AAA	Adding clients in AAA server - Cius	To verify whether clients are added in ACS server.	Passed	
WirelessJ73MAC.028	MAC Filtering	Performing MAC filtering with clients registered in ACS server - 2500 controller	To verify whether registered clients are successfully authenticated and associated with WLANs in which MAC Filtering is enabled.	Passed	
WirelessJ73MAC.029	MAC Filtering	Performing MAC filtering with clients registered in ACS server - 7500 controller	To verify whether registered clients are successfully authenticated and associated with WLANs in which MAC Filtering is enabled.	Passed	
WirelessJ73MAC.030	MAC Filtering	Performing MAC filtering - Cius	To verify whether Cius gets successfully associated with WLANs in which MAC Filtering is enabled.	Passed	

Logical ID	Feature Tested	Title	Description	Status	Defect
WirelessJ73MAC.031	MAC Filtering	Performing MAC filtering and MAC Auth or Dot1x - 7500 controller	To verify whether registered clients are successfully authenticated and associated with WLANs in which MAC Filtering is enabled.	Passed	
WirelessJ73MAC.033	MAC Filtering	Performing MAC filtering and MAC Auth or Dot1x - 2500 controller	To verify whether registered clients are successfully authenticated and associated with WLANs in which MAC Filtering is enabled.	Passed	
WirelessJ73MAC.034	MAC Filtering	Performing MAC filtering with WPA2+PSK - 7500 controller	To verify whether registered clients are successfully authenticated and associated with WLANs in which MAC Filtering is enabled.	Passed	
WirelessJ73MAC.035	MAC Filtering	Performing MAC filtering with WPA2+PSK - 2500 controller	To verify whether registered clients are successfully authenticated and associated with WLANs in which MAC Filtering is enabled.	Passed	
WirelessJ73MAC.036	MAC Filtering	Performing MAC filtering with Static WEP - 7500 controller	To verify whether registered clients are successfully authenticated and associated with WLANs in which MAC Filtering is enabled.	Passed	

Logical ID	Feature Tested	Title	Description	Status	Defect
WirelessJ73MAC.038	MAC Filtering	Performing MAC filtering with 802.1x - 2500 controller	To verify whether registered clients are successfully authenticated and associated with WLANs in which MAC Filtering is enabled.	Passed	
WirelessJ73MAC.039	MAC Filtering	Performing MAC filtering with 802.1x - 5500 controller	To verify whether registered clients are successfully authenticated and associated with WLANs in which MAC Filtering is enabled.	Passed	
WirelessJ73MAC.045	MAC Filtering	Performing MAC filtering with clients registered in ISE server	To verify whether registered clients are successfully authenticated and associated with WLANs in which MAC Filtering is enabled.	Passed	
WirelessJ73SMAC.001	MAC Filtering	Enabling MAC filtering with L2 Security WPA+WPA2, WEP, 802.1x - 2500 controller	To verify whether MAC Filtering is enabled when creating a WLAN in 2500 controller.	Passed	
WirelessJ73SMAC.002	MAC Filtering	Enabling MAC filtering with L2 Security WPA+WPA2, WEP, 802.1x - WiSM2 controller	To verify whether MAC Filtering is enabled when creating a WLAN in WiSM2 controller.	Passed	
WirelessJ73SMAC.003	MAC Filtering	Enabling MAC filtering with L2 Security WPA+WPA2, WEP, 802.1x - 7500 controller	To verify whether MAC Filtering is enabled when creating a WLAN in 7500 controller.	Passed	

Logical ID	Feature Tested	Title	Description	Status	Defect
WirelessJ73SMAC.004	MAC Auth or Dot1x	Enabling MAC Auth or Dot1x with L2 Security WPA+WPA2, WEP, 802.1x - WiSM2 controller	To verify whether MAC Auth or Dot1x is enabled when creating a WLAN in WiSM2 controller.	Passed	
WirelessJ73SMAC.005	MAC Auth or Dot1x	Enabling MAC Auth or Dot1x with L2 Security Static WEP + 802.1x - WiSM2 controller	To verify whether MAC Auth or Dot1x is enabled when creating a WLAN in WiSM2 controller.	Passed	
WirelessJ73SMAC.006	MAC Filtering	Adding local MAC filters in security settings - 2500 controller	To verify whether the client MAC address is added in the Local MAC Filter database of 2500 controller.	Passed	
WirelessJ73SMAC.007	MAC Filtering	Adding local MAC filters in security settings - 7500 controller	To verify whether the client MAC address is added in the Local MAC Filter database of 7500 controller.	Passed	
WirelessJ73SMAC.008	MAC Filtering	Adding local MAC filters in security settings - WiSM2 controller	To verify whether the client MAC address is added in the Local MAC Filter database of WiSM2 controller.	Passed	
WirelessJ73SMAC.009	MAC Filtering Template	Creating and applying the MAC Filter template from NCS to 2500 controller	To verify whether the MAC Filter template from NCS is applied to 2500 controller.	Passed	
WirelessJ73SMAC.010	MAC Filtering Template	Creating and applying the MAC Filter template from NCS to WiSM2 controller	To verify whether the MAC Filter template from NCS is applied to WiSM2 controller.	Passed	

Logical ID	Feature Tested	Title	Description	Status	Defect
WirelessJ73SMAC.011	MAC Filtering Template	Reflection of changes in MAC filter parameters from NCS to 2500 controller	To verify whether the changes made to the MAC filter parameters in NCS are reflecting in 2500 controller.	Passed	
WirelessJ73SMAC.012	MAC Filtering Template	Reflection of changes in MAC filter parameters from NCS to virtual controller	To verify whether the changes made to the MAC filter parameters in NCS are reflecting in virtual controller.	Passed	
WirelessJ73SMAC.013	MAC Filtering Template	Reflection of changes in MAC filter parameters from NCS to 5500 controller	To verify whether the changes made to the MAC filter parameters in NCS are reflecting in 5500 controller.	Passed	
WirelessJ73SMAC.014	MAC Filtering Template	Reflection of changes in MAC filter parameters from NCS to WiSM2 controller	To verify whether the changes made to the MAC filter parameters in NCS are reflecting in WiSM2 controller.	Passed	
WirelessJ73MAC.052	MAC Filtering	Performing MAC filtering with WEP with clients registered in ISE server	To verify whether registered clients are successfully authenticated and associated with WLANs in which MAC Filtering is enabled.	Passed	

MSS Adjustment

Logical ID	Feature Tested	Title	Description	Status	Defect
WirelessJ73MTU.007	MSS Adjustment	Setting MSS for 3600AP from WLC GUI	To verify whether MSS is set for 3600AP from 5500 WLC GUI.	Passed	

Logical ID	Feature Tested	Title	Description	Status	Defect
WirelessJ73MTU.008	MSS Adjustment	Setting MSS for 1042AP from WLC GUI	To verify whether MSS is set for 1042AP from 5500 WLC GUI.	Passed	
WirelessJ73MTU.009	MSS Adjustment	Setting MSS for 3502AP from WLC GUI	To verify whether MSS is set for 3502AP from 5500 WLC GUI.	Passed	
WirelessJ73MTU.013	MSS Adjustment	Setting the global MSS in 5500 controller	To verify whether the global configuration changes in MSS are applied to the APs in 5500 controller.	Passed	
WirelessJ73MTU.014	MSS Adjustment	Setting the global MSS in 2500 controller	To verify whether the global configuration changes in MSS are applied to the APs in 2500 controller.	Passed	
WirelessJ73MTU.015	MSS Adjustment	Setting MSS through WLC CLI	To verify whether an error message is displayed when trying to set MSS through CLI, after setting the global MSS.	Passed	

AP SSO

Logical ID	Feature Tested	Title	Description	Status	Defect
WirelessJ73AP_SSOS.001	AP SSO	Bringing HA pair up - WLC 5508	To verify whether the HA pair (ACTIVE : STANDBY) is up successfully.	Passed	
WirelessJ73AP_SSOS.002	AP SSO	Bringing HA pair up - WLC 7500	To verify whether the HA pair (ACTIVE : STANDBY) is up successfully.	Passed	

Logical ID	Feature Tested	Title	Description	Status	Defect
WirelessJ73AP_SSOS.003	AP SSO	AP SSO after Active failover - 1142AP	To verify whether AP switches over to the new Active controller seamlessly.	Passed	
WirelessJ73AP_SSOS.004	AP SSO	AP SSO after Active failover - 1042AP	To verify whether AP switches over to the new Active controller seamlessly.	Passed	
WirelessJ73AP_SSOS.005	AP SSO	AP SSO after Active failover - 3500AP	To verify whether AP switches over to the new Active controller seamlessly.	Passed	
WirelessJ73AP_SSOS.006	AP SSO	AP SSO after Active failover - 3600AP	To verify whether AP switches over to the new Active controller seamlessly.	Passed	
WirelessJ73AP_SSOS.007	AP SSO	Client status during AP SSO after Active failover - L2 Authentication	To verify whether the client is dissociated and then forced to rejoin the controller after an AP SSO.	Passed	
WirelessJ73AP_SSOS.008	AP SSO	Client status during AP SSO after Active failover - Web Authentication	To verify whether the client is dissociated and then forced to rejoin the controller after an AP SSO.	Passed	
WirelessJ73AP_SSOS.009	AP SSO	Controller HA pair with different hardware models	To verify the role negotiation between the controllers with different hardware models.	Passed	

Logical ID	Feature Tested	Title	Description	Status	Defect
WirelessJ73AP_SSOS.010	AP SSO	Controller HA pair with different software versions	To verify the role negotiation between the controllers with different software versions.	Passed	
WirelessJ73AP_SSOS.011	AP SSO	Controller mode when the redundancy port loses connectivity	To verify the controller modes of the HA pair after disconnecting the redundancy port.	Passed	
WirelessJ73AP_SSOS.012	AP SSO	Controller mode when the gateway is not reachable from the STANDBY controller	To verify the controller modes of the HA pair when the gateway is not reachable from the STANDBY controller.	Passed	
WirelessJ73AP_SSOS.013	AP SSO	Controller mode when the gateway is not reachable from the ACTIVE controller	To verify the controller modes of the HA pair when the gateway is not reachable from the ACTIVE controller.	Passed	
WirelessJ73AP_SSOS.014	AP SSO	Controller mode when the gateway is not reachable from both the controllers	To verify the controller modes of the HA pair when the gateway is not reachable from both the controllers.	Passed	
WirelessJ73AP_SSOS.015	AP SSO	Controller modes (HA pair) after power failure	To verify the controller modes of the HA pair after a power failure on both the controllers.	Passed	

Logical ID	Feature Tested	Title	Description	Status	Defect
WirelessJ73AP_SSOS.016	AP SSO	HA mode after resetting the peer system from ACTIVE	To verify the HA mode after resetting the peer system from the ACTIVE controller.	Passed	
WirelessJ73AP_SSOS.017	AP SSO	Switchover trigger when ACTIVE is reset	To verify the successful switchover after the ACTIVE controller is reset.	Passed	
WirelessJ73AP_SSOS.018	AP SSO	AP SSO when ACTIVE is reset	To verify whether AP is successfully switched over to the new ACTIVE controller after the current ACTIVE controller is reset.	Passed	
WirelessJ73AP_SSOS.019	AP SSO	Switchover trigger after a force switchover	To verify the successful switchover after a force switchover.	Passed	
WirelessJ73AP_SSOS.21	AP SSO	Switchover trigger when ACTIVE controller port is down	To verify the successful switchover when the management interface port of the ACTIVE controller is down.	Passed	
WirelessJ73AP_SSOS.022	AP SSO	Switchover trigger when the connectivity to the gateway is lost	To verify the successful switchover when the gateway is not reachable from the ACTIVE controller.	Passed	

Logical ID	Feature Tested	Title	Description	Status	Defect
WirelessJ73AP_SSOS.023	AP SSO	Download the HA image in the ACTIVE controller and ensure that the image is transferred to STANDBY - WLC 5508	To verify whether the HA image downloaded in the ACTIVE controller will also upgrade the STANDBY controller through redundancy port.	Passed	
WirelessJ73AP_SSOS.024	AP SSO	Download the HA image in the ACTIVE controller and ensure that the image is transferred to STANDBY - WLC 7500	To verify whether the HA image downloaded in the ACTIVE controller will also upgrade the STANDBY controller through redundancy port.	Passed	
WirelessJ73AP_SSOS.027	AP SSO	Transfer download of web auth bundle in ACTIVE controller and ensure that it is pushed to the STANDBY controller through redundancy port - WLC 5508	To verify whether the web auth bundle is successfully downloaded to the ACTIVE controller and is pushed to the STANDBY controller through redundancy port.	Passed	
WirelessJ73AP_SSOS.028	AP SSO	Transfer download of web auth bundle in ACTIVE controller and ensure that it is pushed to the STANDBY controller through redundancy port - WLC 7500	To verify whether the web auth bundle is successfully downloaded to the ACTIVE controller and is pushed to the STANDBY controller through redundancy port.	Passed	

Logical ID	Feature Tested	Title	Description	Status	Defect
WirelessJ73AP_SSOS.038	AP SSO	Client status during AP SSO after Active failover - Web Authentication (Customized) - WLC 5508	To verify whether the client is dissociated and then forced to rejoin the controller after an AP SSO.	Passed	
WirelessJ73AP_SSOS.039	AP SSO	Client status during AP SSO after Active failover - Web Authentication (Internal) - WLC 7500	To verify whether the client is dissociated and then forced to rejoin the controller after an AP SSO.	Passed	
WirelessJ73AP_SSOS.040	AP SSO	Client status during AP SSO after Active failover - Web Authentication (Customized) - WLC 7500	To verify whether the client is dissociated and then forced to rejoin the controller after an AP SSO.	Passed	

NAT/PAT

Logical ID	Feature Tested	Title	Description	Status	Defect
WirelessJ73SNAT_001	NAT/PAT	Configure NAT when AP is in PPPoE mode - Using vWLC and 1042 AP	To verify whether NAT can be done when the AP is in the PPPoE mode. The IP address of the client is translated to an AP public address when the AP is in the PPPoE mode.	Passed	

Logical ID	Feature Tested	Title	Description	Status	Defect
WirelessJ73SNAT_002	NAT/PAT	Clients joining on locally switched WLAN - Get IP from central DHCP server - AP is not in PPPoE submode	To verify whether NAT can be done when the AP is in the PPPoE mode. The IP address of the client is translated to an AP public address when the AP is not in the PPPoE submode.	Passed	
WirelessJ73SNAT_003	NAT/PAT	NAT when AP mode is FlexConnect and submode is PPPoE. Clients get IP address from central DHCP server and associate with locally switched WLAN.	To verify whether NAT can be done when the AP is in the FlexConnect mode and PPPoE submode. The IP address of the client is translated to an AP public address and the client gets an IP address from the central DHCP server.	Passed	
WirelessJ73SNAT_004	NAT/PAT	NAT when AP mode is FlexConnect and submode is PPPoE. Make controller down and AP to act in FlexConnect mode.	To verify whether NAT can be done when the AP is in the FlexConnect mode and PPPoE submode. The IP address of the client is translated to an AP public address when the controller is down and the AP acts as the FlexConnect AP.	Passed	
WirelessJ73SNAT_005	NAT/PAT	Enable NAT implicitly in 3600 AP	To verify whether NAT is enabled on AP implicitly.	Passed	
WirelessJ73SNAT_006	NAT/PAT	NAT with AP groups	To verify whether NAT works with the AP groups.	Passed	

Logical ID	Feature Tested	Title	Description	Status	Defect
WirelessJ73SNAT_007	NAT/PAT	NAT verification between 2 clients	To verify whether NAT is properly done when two clients are associated with two WLANs - Using vWLC, and 1042 and 3500 APs.	Passed	
WirelessJ73SNAT_008	NAT/PAT	NAT verification between two clients when two APs act in FlexConnect mode. Making controller down.	To verify whether NAT is properly done when two clients are associated with two WLANs - Using vWLC, and 1042 and 3500 APs.	Passed	
WirelessJ73SNAT_009	NAT/PAT	Client association with 3600 AP using WEP configured in vWLC	To verify whether the client can associate with WEP and to verify the NAT process during the client association.	Passed	
WirelessJ73SNAT_010	NAT/PAT	Client association with WPA2 and LEAP	To verify whether the client can associate with WEP and to verify the NAT process during the client association.	Passed	
WirelessJ73SNAT_011	NAT/PAT	Client association with internal web authentication	To verify whether the client can associate with internal authentication.	Passed	
WirelessJ73SNAT_012	NAT/PAT	Client association with external web authentication	To verify whether the client can associate with external authentication.	Passed	

Wireless Clients (Apple Mac and IP Phones)

Logical ID	Feature Tested	Title	Description	Status	Defect
WirelessJ73.MacBook.001	Apple Mac - Open Authentication	Apple Mac - Check if Apple MacBook is connecting with Wi-Fi with open authentication	To verify whether MacBook connects to Wi-Fi using open authentication.	Passed	
WirelessJ73.MacBook.002	Apple Mac - L2 Security	Apple Mac - Check if Apple MacBook is connecting with Wi-Fi with WEP authentication	To verify whether MacBook connects to Wi-Fi using WEP authentication.	Passed	
WirelessJ73.MacBook.003	Apple Mac - L2 Security	Apple Mac - Check if Apple MacBook is connecting with Wi-Fi with WPA2 authentication	To verify whether MacBook connects to Wi-Fi using WPA2 authentication.	Passed	
WirelessJ73.MacBook.004	Apple Mac - L2 Security	Apple Mac - Check if Apple MacBook is connecting with Wi-Fi with L3 web authentication	To verify whether MacBook connects to Wi-Fi using L3 web authentication.	Passed	
WirelessJ73.MacBook.005	Apple Mac - AAA Server	Apple Mac - Check if Apple MacBook is authenticated using AAA server	To verify whether MacBook is authenticated using the AAA server.	Passed	
WirelessJ73.MacBook.006	Apple Mac - ISE	Apple Mac - Check if Apple MacBook is authenticated using ISE server	To verify whether MacBook is authenticated using the ISE server.	Passed	

Logical ID	Feature Tested	Title	Description	Status	Defect
WirelessJ73.MacBook.007	Apple Mac - FlexConnect	Apple Mac - Check if Apple MacBook is connecting with Wi-Fi when AP is in FlexConnect mode and when WLC is down	To verify whether MacBook connects to Wi-Fi when AP is in the FlexConnect mode.	Passed	
WirelessJ73.MacBook.009	Apple Mac - Failover	Mobility group configuration in 5508 controller using command line interface (using Apple MacBook for configuration)	To verify whether a mobility group can be successfully configured in 5508 WLC through the CLI in Apple MacBook 10.6 Snow Leopard.	Passed	
WirelessJ73.MacBook.010	Apple Mac - Failover	Mobility group configuration in 7500 controller using command line interface (using Apple MacBook for configuration)	To verify whether a mobility group can be successfully configured in 7500 WLC through the CLI in Apple MacBook 10.6 Snow Leopard.	Passed	
WirelessJ73.MacBook.011	Apple Mac - Inter-controller Roaming	Inter-controller roaming within 5508 controllers in same subnet - Using Apple MacBook as client	To verify whether inter-controller roaming works properly between two 5508 WLAN controllers in the same subnet while using Apple MacBook 10.6 Snow Leopard as the client.	Passed	

Logical ID	Feature Tested	Title	Description	Status	Defect
WirelssJ73.MacBook.012	Apple Mac - Inter-controller Roaming	Inter-controller roaming within 7500 controllers in same subnet - Using Apple MacBook as client	To verify whether inter-controller roaming works properly between two 7500 WLAN controllers in the same subnet while using Apple MacBook 10.6 Snow Leopard as the client.	Passed	
WirelssJ73.MacBook.013	Apple Mac - Inter-controller Roaming	Inter- controller roaming between 5508 (Anchor) and Flex 7500 controllers in same subnet - Using Apple MacBook as client	To verify whether inter-controller roaming works properly between the 5508 (Anchor) and Flex 7500 WLAN controllers in the same subnet while using Apple MacBook 10.6 Snow Leopard as the client.	Passed	
WirelssJ73.MacBook.014	Apple Mac - Inter-controller Roaming	Inter- controller roaming between 7500 and Flex 5508 controllers in same subnet -Using Apple MacBook as client	To verify whether inter-controller roaming works properly between the 7500 (Anchor) and Flex 5508 WLAN controllers in the same subnet while using Apple MacBook 10.6 Snow Leopard as the client.	Passed	

Logical ID	Feature Tested	Title	Description	Status	Defect
WirelessJ73.MacBook.015	Apple Mac - WGB	WGB association, WGB client registration through FlexConnect AP in connected mode - Using Apple MacBook as client	To verify successful association of WGB and successful registration of WGB clients to the controller through the FlexConnect AP (using Apple MacBook 10.6 Snow Leopard as the client).	Passed	
WirelessJ73.MacBook.016	Apple Mac - WGB	WGB association, WGB client registration through FlexConnect AP in standalone mode - Using Apple MacBook as client	To verify successful association of WGB and successful registration of WGB clients to the controller through the FlexConnect AP in standalone mode (using Apple MacBook 10.6 Snow Leopard as the client).	Passed	
WirelessJ73.MacBook.017	Apple Mac - PPPoE	PPPoE CLI - To check if client (Apple MacBook) is getting IP from central DHCP after AP changes to FlexConnect mode in 2500 WLC	To verify whether the client (Apple MacBook 10.6 Snow Leopard) IP address is from the central DHCP server, after AP switches over to the FlexConnect mode.	Passed	

Logical ID	Feature Tested	Title	Description	Status	Defect
WirelessJ73.MacBook.018	Apple Mac - PPPoE	PPPoE CLI - To check if client (Apple MacBook) is getting IP from central DHCP after AP changes to FlexConnect mode in 5500 WLC	To verify whether the client (Apple MacBook 10.6 Snow Leopard) IP address is from the central DHCP server, after AP switches over to the FlexConnect mode.	Passed	
WirelessJ73.MacBook.019	Apple Mac - PPPoE	PPPoE CLI - To check if client (Apple MacBook) is getting IP from central DHCP after AP changes to FlexConnect mode in 7500 WLC	To verify whether the client (Apple MacBook 10.6 Snow Leopard) IP address is from the central DHCP server, after AP switches over to the FlexConnect mode.	Passed	
WirelessJ73.MacBook.020	Apple Mac - PPPoE	PPPoE CLI - To check if client (Apple MacBook) is getting IP from central DHCP after AP changes to FlexConnect mode in virtual controller	To verify whether the client (Apple MacBook 10.6 Snow Leopard) IP address is from the central DHCP server, after AP switches over to the FlexConnect mode.	Passed	

Logical ID	Feature Tested	Title	Description	Status	Defect
WirelessJ73.MacBook.021	Apple Mac - Inter-controller Roaming	Inter-controller roaming between 5508 (Anchor) and Flex 7500 controllers in different subnet with symmetric tunneling enabled (using Apple MacBook as client)	To verify whether inter-controller roaming between the 5508 (Anchor) and Flex 7500 controllers in different subnets works properly with symmetric tunneling enabled (using Apple MacBook 10.6 Snow Leopard as the client).	Passed	
WirelessJ73.MacBook.022	Apple Mac - Inter-controller Roaming	Inter-controller roaming between 7500 (Anchor) and 5500 (Foreign) controllers in different subnet with symmetric tunneling enabled (using Apple MacBook as client)	To verify whether inter-controller roaming between the Flex 7500 (Anchor) and 5500 controllers in different subnets works properly with symmetric tunneling enabled (using Apple MacBook 10.6 Snow Leopard as the client).	Passed	
WirelessJ73.MacBook.023	Apple Mac - Inter-controller Roaming	Inter-controller roaming between two 5508 controllers in different subnet with symmetric tunneling disabled (using Apple MacBook as client)	To verify whether inter-controller roaming between two 5508 controllers in different subnets does not work with symmetric tunneling disabled (using Apple MacBook 10.6 Snow Leopard as the client).	Passed	

Logical ID	Feature Tested	Title	Description	Status	Defect
WirelessJ73.MacBook.024	Apple Mac - Mobility Group	Mobility group configuration using web user interface - 5508 controller (using Apple MacBook for configuration)	To verify whether mobility group can be successfully configured in the 5508 controller using the GUI and whether mobility group members can be added to this group (using Apple MacBook for configuration).	Passed	
WirelessJ73.MacBook.025	Apple Mac - Mobility Group	Mobility group configuration using web user interface - Flex 7500 controller (using Apple MacBook for configuration)	To verify whether mobility group can be successfully configured in the 5508 controller using the GUI and whether mobility group members can be added to this group (using Apple MacBook for configuration).	Passed	
WirelessJ73SClients.001		Manually registering wireless clients like Cius, IP phones in CUCM	To verify whether wireless clients get successfully registered with CUCM.	Passed	
WirelessJ73SClients.002		Changing the network and user locale of wireless clients registered in CUCM	To verify whether user locale has changed in the wireless clients registered in CUCM.	Passed	

Logical ID	Feature Tested	Title	Description	Status	Defect
WirelessJ73SClients.003		Calling from Cius to 7921G	To verify whether both the Cius and 7921G clients are registered and whether a call can be made from Cius to 7921G.	Passed	
WirelessJ73SClients.004		Calling from Cius to 7925G	To verify whether both the Cius and 7925G clients are registered and whether a call can be made from Cius to 7925G.	Passed	
WirelessJ73SClients.005		Calling from 7921G to 7925G	To verify whether both the 7921G and 7925G clients are registered and whether a call can be made from 7921G to 7925G.	Passed	
WirelessJ73SClients.006	Conference Call	Making conference call from 7921G to 7925G and Cius - Japanese locale	To verify whether the clients are registered and whether a conference call can be made from 7921G to 7925G and Cius and vice versa.	Passed	
WirelessJ73SClients.007	Conference Call	Making conference call from 7921G to 7925G and Cius -United States locale	To verify whether the clients are registered and whether a conference call can be made from 7921G to 7925G and Cius and vice versa.	Passed	

Logical ID	Feature Tested	Title	Description	Status	Defect
WirelessJ73SClients.008	Call Transfer	Making a call transfer function in wireless clients - United States locale	To verify whether the clients are registered and whether call transfers can be made from 7921G to 7925G and Cius and vice versa.	Passed	
WirelessJ73SClients.009	Call Transfer	Making a call transfer function in wireless clients - Japanese Locale	To verify whether the clients are registered and whether call transfers can be made from 7921G to 7925G and Cius and vice versa.	Passed	
WirelessJ73SClients.010	Call Forward	Making a call forward function in wireless clients - Japanese locale	To verify whether the clients are registered and whether a call can be forwarded to the specified destination.	Passed	
WirelessJ73SClients.011	Call Forward	Making a call forward function in wireless clients - United States locale	To verify whether the clients are registered and whether a call can be forwarded to the specified destination.	Passed	
WirelessJ73SClients.012	Call Forward	Making a call forward function "No Answer" in wireless clients - United States locale	To verify whether the call is forwarded to 7925G if Cius does not answer the call.	Passed	
WirelessJ73SClients.013	Call Forward	Making a call forward function "No Answer" in wireless clients - Japanese locale	To verify whether the call is forwarded to 7925G if Cius does not answer the call.	Passed	

Logical ID	Feature Tested	Title	Description	Status	Defect
WirelessJ73SClients.014	Call Forward	Making a call forward function "Busy" in wireless clients - Japanese locale	To verify whether the call is forwarded to 7925G if Cius is busy.	Passed	
WirelessJ73SClients.015	Call Forward	Making a call forward function "Busy" in wireless clients - United States locale	To verify whether the call is forwarded to 7925G if Cius is busy.	Passed	
WirelessJ73SClients.016		Manually registering wireless clients like 7921G IP phone in CUCM	To verify whether wireless clients get successfully registered with CUCM.	Passed	
WirelessJ73SClients.017		Changing the network and user locale of wireless client 7926G registered in CUCM	To verify whether user locale has changed in the wireless client, 7926G registered in CUCM.	Passed	
WirelessJ73SClients.018		Calling from Cius to 7926G	To verify whether both the Cius and 7926G clients are registered and whether a call can be made from Cius to 7926G.	Passed	
WirelessJ73SClients.019		Calling from 7926G to 7926G	To verify whether both the 7926G clients are registered and whether a call can be made from one 7926G to another.	Passed	

Logical ID	Feature Tested	Title	Description	Status	Defect
WirelessJ73SClients.020		Calling from 7921G to 7926G	To verify whether both the 7921G and 7926G clients are registered and whether a call can be made from 7921G to 7926G.	Passed	
WirelessJ73SClients.021	Conference Call	Making conference call using two 7926Gs and Cius	To verify whether the clients are registered and whether a conference call can be made using two 7926Gs and Cius.	Passed	
WirelessJ73SClients.022	Call Transfer	Making a call transfer function in two 7926Gs and Cius	To verify whether the clients are registered and whether call transfers can be made from the two 7926Gs to Cius and vice versa.	Passed	
WirelessJ73SClients.023	Call Forward	Making a call forward function in wireless clients	To verify whether the clients are registered and whether a call can be forwarded to the specified destination.	Passed	
WirelessJ73SClients.024	Call Forward	Making a call forward function "No Answer" in wireless clients	To verify whether the call is forwarded to 7925G if 7926G does not answer the call.	Passed	
WirelessJ73SClients.025	Call Forward	Making a call forward function "Busy" in wireless clients	To verify whether the call is forwarded to 7926G if Cius is busy .	Passed	

Logical ID	Feature Tested	Title	Description	Status	Defect
WirelessJ73SClients.026	Layer 2 Security	Associating 7926G with Layer 2 security "WEP"	To verify whether 7926G gets associated with a WLAN configured with Layer 2 security "WEP".	Passed	
WirelessJ73SClients.027	Layer 2 Security	Associating 7926G with Layer 2 security "WPA2"	To verify whether 7926G gets associated with a WLAN configured with Layer 2 security "WPA2".	Passed	
WirelessJ73SClients.028	Layer 2 Security	Associating 7926G with Layer 2 security "WPA2-802.1x"	To verify whether 7926G gets associated with a WLAN configured with Layer 2 security "WPA2-802.1x".	Passed	
WirelessJ73SClients.029	Layer 2 Security	Associating 7926G with Layer 2 security "WPA2-PSK"	To verify whether 7926G gets associated with a WLAN configured with Layer 2 security "WPA2-PSK".	Passed	
WirelessJ73SClients.030	Layer 2 Security	Associating 7925G with Layer 2 security "WPA2-PSK"	To verify whether 7925G gets associated with a WLAN configured with Layer 2 security "WPA2-PSK".	Passed	

Cisco Wireless LAN Test Results - Regression Features

Logical ID	Feature Tested	Title	Description	Status	Defect
WirelessJ73NCSLWAPPS.001		Local AP mode change from NCS	To verify whether the AP mode can be changed to "local" from NCS.	Passed	
WirelessJ73RS.001	Regression - Copy and Replace	Copy and replace AP - Map	To verify whether the copy and replace process is successful.	Passed	
WirelessJ73RS.002	Regression - LWAPP Migration	Autonomous to LWAPP migration	To verify the migration from autonomous AP to LWAPP.	Passed	
WirelessJ73RS.003	Regression - LWAPP Migration	NCS: Migrating autonomous AP to LWAPP using the option, "schedule for later date/time"	To verify the migration from autonomous AP to LWAPP using the option, "schedule for later date/time".	Passed	
WirelessJ73RS.004	Link Aggregation	Enable link aggregation on the controller - LAP local	To verify the Lightweight Access Point registration/join status on the controller.	Passed	
WirelessJ73RS.005	Link Aggregation	Enable link aggregation on the controller - LAP H-REAP mode ports	To verify the Lightweight Access Point registration status when one port fails.	Passed	
WirelessJ73RS.006	Link Aggregation	Client association with Lightweight Access Point after link aggregation failover	To verify the successful association of wireless client with Lightweight Access Point.	Passed	

Logical ID	Feature Tested	Title	Description	Status	Defect
WirelessJ73RS.007	Link Aggregation	LAG failover - Ping, FTP (Refer- CSCth12513)	To verify the ping and FTP packets during LAG failover.	Passed	
WirelessJ73RS.008	Link Aggregation	LAG port status - Trap log with SNMP manager (Refer: CSCto58101 - Delay in port up/down causes issues with LAG working on WLC)	To verify the LAG port status message in SNMP manager.	Passed	
WirelessJ73RS.009	Link Aggregation	Active controller ports status when it is in link aggregation (LAG) failover	To verify the status of active controller ports during LAG failover.	Passed	
WirelessJ73RS.010	WLC Failover	Client connectivity during the failover - Radio policies A, B, G	To verify whether the client connection is successfully restored from the standalone mode to the connected mode.	Passed	
WirelessJ73RS.011	WLC Failover	WLC: Failover feature in WLC	To verify whether the failover feature works properly in WLC (with IPv4 and IPv6) clients.	Passed	
WirelessJ73RS.014	Copy and Replace	Copy and replace AP - Client connectivity	To verify the successful copy and replace.	Passed	
WirelessJ73RS.015		Configuring wired guest access	To verify whether wired guest access works properly in LWC.	Passed	

Logical ID	Feature Tested	Title	Description	Status	Defect
WirelessJ73RS.016		Client count by wireless / wired details	To verify whether the total number of wired and wireless clients over the selected period of time is displayed in NCS .	Passed	
WirelessJ73RS.017	Web Auth	Customized Web Auth login page for the controller - Laptop, Cius	To verify the customized web login page with internal authentication.	Passed	
WirelessJ73RS.018	Inter-controller Roaming	Over-the-DS inter-controller roaming with RIC request	To verify the fast transition of client roaming over the DS between controllers with the client requesting for video as well as voice TSPECs.	Passed	
WirelessJ73RS.019	Inter-controller Roaming	Inter-controller roaming over the air	To verify the fast transition of client roaming over the air between controllers.	Passed	
WirelessJ73RS.020	Inter-controller Roaming	Over-the-DS inter-controller roaming	To verify the fast transition of client roaming over the DS between controllers.	Passed	
WirelessJ73RS.021	Intra-controller Roaming	Over-the-air intra-controller roaming with RIC Request	To verify the fast transition of client roaming over the air within the controller with the client requesting for voice TSPEC.	Passed	
WirelessJ73RS.022	Intra-controller Roaming	Intra-controller roaming over the DS	To verify the fast transition of client roaming over the DS within the same controller.	Passed	

Logical ID	Feature Tested	Title	Description	Status	Defect
WirelessJ73RS.023	Intra-controller Roaming	Intra-controller roaming over the air	To verify the fast transition of client roaming over the air within the same controller.	Passed	
WirelessJ73RS.024	Web Auth	Configuring customized (downloaded) web auth using NCS	To verify whether the customized (downloaded) web auth configuration in NCS reflects in WLC.	Passed	
WirelessJ73RS.025	Customised Login	CT2500: Customized (downloaded) login page for the controller	To verify the customized web login page with internal authentication.	Passed	
WirelessJ73RS.027	Customised Login	Customized web auth login page for the controller - Laptop, Cius	To verify the customized web login page with internal authentication.	Passed	
WirelessJ73RS.033	L2 Security	Cius association - (WPA/WPA2) (802.1x auth + TKIP or AES encryption)	To verify whether Cius is successfully associated with the network through the WPA/WPA2 (802.1x auth + TKIP or AES encryption) authentication method.	Passed	
WirelessJ73RS.034	L2 Security	Cius association - WPA-PSK (TKIP)	To verify whether Cius is successfully associated with the network through the WPA-PSK (TKIP) authentication method.	Passed	

Logical ID	Feature Tested	Title	Description	Status	Defect
WirelessJ73RS.035	L2 Security	Cius association - WPA2-PSK (AES)	To verify whether Cius is successfully associated with the network through the WPA2-PSK (AES) authentication method.	Passed	
WirelessJ73RS.036	L2 Security	Cius association - WEP	To verify whether Cius is successfully associated with the network through the WEP authentication method.	Passed	
WirelessJ73RS.037	L2 Security	Cius association through WEP (RADIUS server authentication)	To verify whether Cius is successfully authenticated and associated through WEP.	Passed	
WirelessJ73RS.038	L2 Security	Associating 7921G IP phone - WEP	To verify whether the 7921G IP phone is successfully associated with the network through the WEP authentication method.	Passed	
WirelessJ73RS.039	L2 Security	Associating 7921G IP phone - WPA	To verify whether the 7921G IP phone is successfully associated with the network through the WPA authentication method.	Passed	

Logical ID	Feature Tested	Title	Description	Status	Defect
WirelessJ73RS.040	L2 Security	7921G IP phone association through WEP (RADIUS server authentication)	To verify whether the 7921G IP phone is successfully authenticated and associated through WEP.	Passed	
WirelessJ73RS.041	L2 Security	Authentication for the association of clients - WPA	To verify the authentication of the clients when connected to an AP.	Passed	
WirelessJ73RS.042	L2 Security	Authentication for the association of clients - 802.1x	To verify the authentication of the clients when connected to an AP.	Passed	
WirelessJ73RS.043	L2 Security	Authentication for the association of clients - Static WEP	To verify the authentication of the clients when connected to an AP.	Passed	
WirelessJ73RS.044	L2 Security	Authentication for the association of clients - Static WEP + 802.1x	To verify the authentication of the clients when connected to an AP.	Passed	
WirelessJ73RS.045	L2 Security	Authentication for the association of clients - CKIP	To verify the authentication of the clients when connected to an AP.	Passed	
WirelessJ73RS.046	CleanAir	AP3600: Enabling / disabling CleanAir functionality using GUI	To verify the enabling / disabling of the CleanAir status for AP3600 through the GUI.	Passed	
WirelessJ73RS.047	CleanAir	AP3600: Enabling / disabling CleanAir functionality using CLI	To verify the enabling / disabling of the CleanAir status for AP3600 through the CLI.	Passed	

Logical ID	Feature Tested	Title	Description	Status	Defect
WirelessJ73RS.048	CleanAir	CT2500: Enable CleanAir to check unlicensed band interference	To verify whether the unlicensed band devices are identified.	Passed	
WirelessJ73RS.049	CleanAir	AP: Enable CleanAir to check unlicensed band	To verify whether unlicensed band devices are detected by WLC.	Passed	
WirelessJ73RS.050	CleanAir	Controller: Configure Cisco CleanAir interferer alarms - CLI	To verify whether the changes made in configuring CleanAir interferer alarms in the CLI mode are reflected in the GUI mode.	Passed	
WirelessJ73RS.071	Alarms in NCS	Deleting alarms in NCS	To verify the alarms delete functionality in the virtual NCS.	Passed	
WirelessJ73RS.072	Alarms in NCS	Alarms - Changing the status	To verify the change in the alarms status in the virtual NCS.	Passed	
WirelessJ73RS.073	Alarms in NCS	Alarms - Assigning owner	To verify the functionality of assigning the owner for alarms with the virtual NCS.	Passed	
WirelessJ73RS.074	AAA	Accessing the vWLC through Telnet with AAA server credentials	To verify the Telnet access for vWLC using the ACS server credentials.	Passed	
WirelessJ73RS.075	AAA	Accessing the vWLC through SSH with AAA server credentials	To verify the SSH access for vWLC using the ACS server credentials.	Passed	

Logical ID	Feature Tested	Title	Description	Status	Defect
WirelessJ73RS.076	AAA	Accessing the vWLC web management GUI with AAA server credentials	To verify the web management GUI of vWLC using the ACS server credentials.	Passed	
WirelessJ73RS.077		To verify the vWLC GUI access after changing the shared secret key	To verify the access to the web management GUI of vWLC after changing the shared secret key in the ACS server.	Passed	
WirelessJ73RS.078		vWLC traps in NCS when RADIUS server is not reachable	To verify the vWLC traps in NCS when the RADIUS server is not reachable.	Passed	
WirelessJ73RS.079	H-REAP Fault Tolerance	H-REAP fault tolerance between connected and standalone AP - 2.4 GHz	To verify whether the client associated to the FlexConnect AP will get reassociated in case of fault tolerance.	Passed	
WirelessJ73RS.080	H-REAP Fault Tolerance	H-REAP fault tolerance between standalone and connected AP - 2.4 GHz	To verify whether the client associated to the FlexConnect AP will get reassociated in case of fault tolerance.	Passed	

Cisco Wireless LAN Test Results - Failed Test Results

Logical ID	Feature Tested	Title	Description	Status	Defect
WirelessJ73Salarms.002	Alarms	Checking correct alarms for the RADIUS server	To verify the IP address alarms for the RADIUS server in NCS.	Failed	CSCua67920
WirelessJ73SReport.001	Reports	Save and run the report with JP character	To verify "Report Save and Run" with Japanese character.	Failed	CSCua74946
WirelessJ73AP_SSOS.042	AP SSO	Swapping IP address for redundancy and peer redundancy port	To verify whether the IP address can be swapped for redundancy and peer redundancy ports while configuring AP SSO.	Failed	CSCua54977
WirelessJ73LicensingS.035	Licensing	Show commands alignment in CLI is not proper	To verify whether the license-related show commands display the details in proper alignment in the CLI.	Failed	CSCua67156
WirelessJ73SAP.001	AP Groups	Deleting AP groups with Japanese character	To verify the deletion of AP groups with Japanese character.	Failed	CSCua84494
WirelessJ73SAP.002	AP Groups	Applying the AP group with Japanese character from NCS	To verify whether the AP group can be applied from NCS using Japanese character.	Failed	CSCua86046
WirelessJ73SNCS.003	Map	Building Map dimensions are not reflecting properly in NCS	To verify whether the changes made to the building map dimensions are reflecting properly in NCS.	Failed	CSCua60391

Logical ID	Feature Tested	Title	Description	Status	Defect
WirelessJ73ncsevents.001	NCS Events	NCS events troubleshoot (ping, traceroute, run sh cmd) - (No config)	To verify whether the NCS events troubleshoot (ping, traceroute, run sh cmd) works.	Failed	CSCua78623
WirelessJ73DS.003	Alarms and Events	Timestamp error in preset filter in the Alarms and Events page	To verify the preset filter in the Alarms and Events page.	Failed	CSCtw53357
WirelessJ73Semail.001		Saving the email notification	To verify whether the email notification is saved successfully.	Failed	CSCub48014
WirelessJ73DS.004		Static IP given to client can ping AP BVI in different VLAN	To verify whether the AP is unable to ping clients that are in a different VLAN.	Failed	CSCub28914
WirelessJ73DS.005		AP sends CAPWAP control frame to client improperly	To verify whether the AP does not send CAPWAP control frames to the client.	Failed	CSCub42439
WirelessJ73SLink.001	Link Test	Verifying the link for Windows 7 with 6300 AGN	To verify the link test for the client, Windows 7 with 6300 AGN.	Failed	CSCub60662
WirelessJ73Salarms .001	Alarms	Checking the progress bar while deleting the alarms	To verify the progress bar while deleting the alarms.	Failed	CSCub67276
WirelessJ73SnCs.002		"Selected Campus" in the Condition page - (No config)	To verify whether "Selected Campus" appears in all the Condition pages.	Failed	CSCub10213

Related Documentation

NCS 1.1 Configuration Guide

<http://www.cisco.com/en/US/docs/wireless/ncs/1.1/configuration/guide/NCS11cg.html>

WLC 7.2 Configuration Guide

<http://www.cisco.com/en/US/docs/wireless/controller/7.2/configuration/guide/cg.html>

Mobility Service Engine Configuration Guide

http://www.cisco.com/en/US/docs/wireless/mse/3350/quick/guide/mse_qsgmain.html#wp1040488

Configuring Identity Service Engine

http://www.cisco.com/en/US/docs/security/ise/1.1/user_guide/ise_authz_polprfls.html

Configuring and Installing ACS 5.0

http://www.cisco.com/en/US/docs/net_mgmt/cisco_secure_access_control_system/5.0/installation/guide/ACS5.0_Install.html