



## **Test Results for Cisco Unified Wireless LAN Test 7.2 for Japan (Release 7.2.110.0)**

**First Published:** May 17, 2012

**Last Modified:** October 05, 2012

### **Americas Headquarters**

Cisco Systems, Inc.

170 West Tasman Drive

San Jose, CA 95134-1706

USA

<http://www.cisco.com>

Tel: 408 526-4000

800 553-NETS (6387)

Fax: 408 527-0883





## CONTENTS

---

### CHAPTER 1

#### Cisco Wireless LAN Solution Test 1

Cisco Wireless LAN Solution Test 1

---

### CHAPTER 2

#### Test Topology and Environment Matrix 5

Test Topology 5

Environment Matrix 6

What's New? 7

Open Caveats 7

---

### CHAPTER 3

#### Test Results Summary for Cisco Unified Wireless LAN Test 7.2.1 for Japan 9

Cisco Wireless LAN Test Results 9

Related Documentation 28





## CHAPTER 1

# Cisco Wireless LAN Solution Test

---

- [Cisco Wireless LAN Solution Test, page 1](#)

## Cisco Wireless LAN Solution Test

Cisco Wireless LAN Solution Test, an integral part of the enterprise wireless solution, is a program that validates and tests, various Cisco Wireless Products and Features. This is achieved by testing the latest versions of Cisco wireless products.

Cisco Wireless LAN Solution Test for Japan, in turn is an add-on testing at the solution level, where the requirements gathered are specific to Japanese usage and market. The requirements are derived based on the following:

- New features in 7.2
- Customer found defects in selected wireless products
- High priority scenarios & basic regression features
- Inputs from various team

The test execution is carried out on selected Cisco Wireless LAN products, which affect the Japanese segment that are prioritized by Cisco Japan team

The following products are covered in the test execution:

- Wireless LAN controller 5508
- Wireless LAN controller 2500
- Wireless LAN Flex Controller 7500
- Access Point 3500
- Access Point 1042
- Access Point 1142
- Access Point 3600
- Network Control system
- MSE Virtual Appliance

- ISE Virtual Appliance
- Cisco Secure ACS

### Acronyms

Acronym	Description
ACS	Access Control server
ADDS	Add Traffic Stream
AKM	Authenticated Key Management
BSS	Basic Service Set
CAPWAP	Control and Provisioning of Wireless Access Point
CCX	Cisco Compatible Extensions
CCKM	Cisco Centralized Key Management
CDP	Cisco Discovery Protocol
CKIP	Cisco Key Integrity Protocol
DTIM	Delivery Traffic Indication Map
EAP	Extensible Authentication Protocol
FT	Fast Transition
HREAP	Hybrid Remote Edge Access Point
ISE	Identity Service Engine
LB CAC	Load Based Call Admission Control
LWAPP	Light Weight Access Point
MSE	Mobility Service Engine
NCS	Network Control System
NMSP	Network Mobility Services Protocol
PSK	Pre -Shared Key
RIC	Roaming and Interconnect
RRM	Radio Resource Management
SSID	Service Set Identifier
TSPEC	Traffic Specification
WEP	Wired Equivalent Privacy
WGB	Work Group Bridge
WLC	Wireless LAN controller

<b>Acronym</b>	<b>Description</b>
WLAN	Wireless LAN
WPA	Wi-Fi Protected Access
WIPS	Wireless Intrusion Prevention System
11r	802.11r







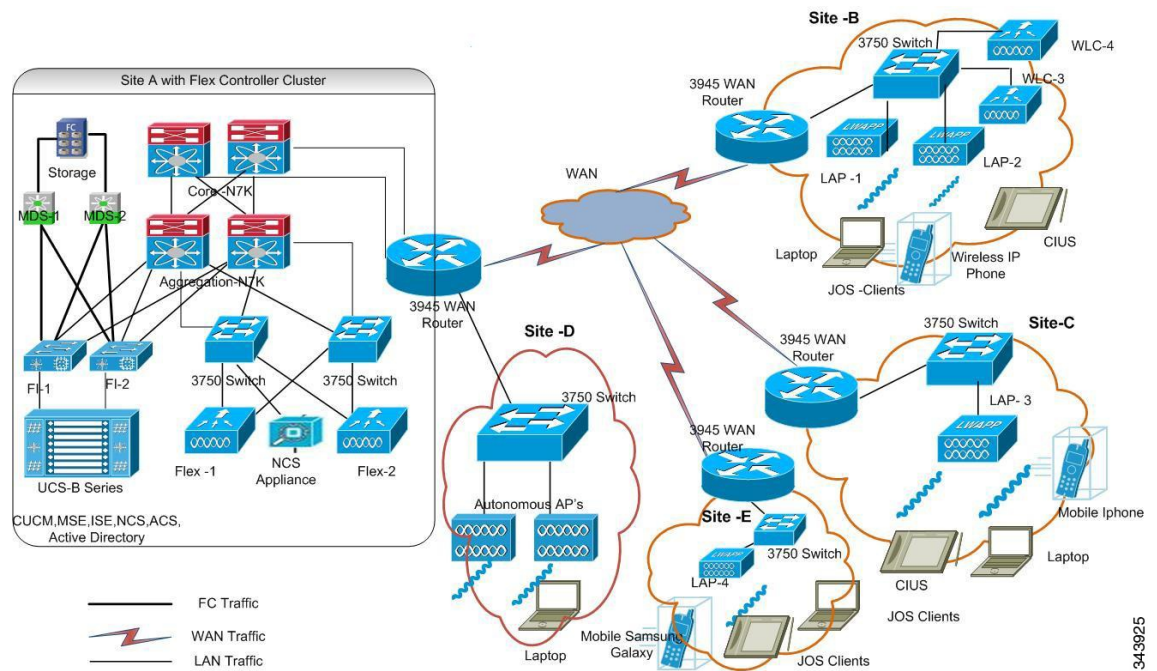
# CHAPTER 2

## Test Topology and Environment Matrix

- Test Topology, page 5
- Environment Matrix, page 6
- What's New?, page 7
- Open Caveats, page 7

### Test Topology

Figure 1: Topology in Use



34:3925

# Environment Matrix

Category	Component	Version
Controller	Wireless LAN Controller 5508	7.2.110.0
	Flex Controller 7500	7.2.110.0
	Wireless LAN Controller 2500	7.2.110.0
Application	NCS (Physical, VM )	1.1.1.24
	MSE ( VM )	7.2.110.0
	ISE ( VM )	1.1.0.665
	Secure ACS ( VM )	5.3.0.40
Call control	Cisco Unified Communications Manager	8.6(2)
Access Point	Cisco AP 1142	12.4
	Cisco AP 3500	12.4
	Cisco AP 1042	12.4
	Cisco AP 3600	12.4
Client	Japanese Operating System	Windows XP Professional
		Windows 7 Enterprise
	iPhone 4 (JP Locale)	5.0
	Samsung Galaxy-II (JP Locale)	2.3.3
	Cius (JP Locale)	9.2(2)
	Wireless IP Phone 7921G (JP Locale)	1.4(2)
Wireless IP Phone 7925G (JP Locale)	1.4(2)	
Active Directory	AD	Windows 2008 R2 Enterprise
Browsers	Internet Explorer Japanese	8, 9
	Mozilla Firefox Japanese	6.0.2
	Google Chrome (JP)	16
Chipset	5300, 6300 AGN	
Switch	Cisco 3750 Switch	15.0
Laptop	Lenovo T400	

# What's New?

## New Features

The following features are new in this release:

- Locally switched Flex & External web-auth -WLC
- Locally switched Flex & External web-auth -NCS
- 802.11r support for local mode-WLC
- 802.11r support for local mode-NCS
- Native sensor(DHCP) support in local mode
- MSE DB back up
- MSE and NCS integration
- Context aware services

## Open Caveats

Defect ID	Defect Title	Fixed in version
CSCtz36776	Delay in displaying Uptime for Autonomous APs added to NCS	
CSCtz39712	Refresh button is not working as expected in MSE	7.3
CSCty97632	AP Mode is not getting applied from NCS to Controller	
CSCtz34810	Monitor client page showing wrong status as Associated	
CSCtz80688	Map location is not getting copied from AP1 to AP2	
CSCtg06124	NCS - add re-enable command under Monitor, Clients option	
CSCtq32444	SNMP message port UP trap goes missing in LAG mode - RCA	
CSCtx60949	Close button for logoff process in Controller is not working.	

Open Caveats



## CHAPTER 3

# Test Results Summary for Cisco Unified Wireless LAN Test 7.2.1 for Japan

- [Cisco Wireless LAN Test Results, page 9](#)
- [Related Documentation, page 28](#)

## Cisco Wireless LAN Test Results

Logical ID	Feature Tested	Title	Description	Status	Defects
WirelessJ721S.001	Cleanair	AP3600: Enabling/disabling cleanair functionality using GUI.	To verify the enabling/disabling of cleanair status for 3600AP through GUI.	Passed	
WirelessJ721S.003	AP mode	AP3600: Mode change from local to flexconnect and vice versa-WLC	To verify whether mode change from local to flexconnect and vice versa is successful in WLC.	Passed	
WirelessJ721S.004	AP mode	AP3600: Mode change from local to flexconnect and vice versa-NCS	To check whether the mode change is successful for an AP in NCS and reflected in WLC	Passed	
WirelessJ721S.005	Flexconnect AP	AP3600: Adding flexconnect AP to flexconnect group-WLC	To verify whether the 3600 AP in flexconnect mode will get added successfully to the Flexconnect AP group	Passed	
WirelessJ721S.006	Flexconnect AP	AP3600: Adding Flexconnect AP in Flexconnect AP group-NCS	To verify that the AP is added successfully to Flexconnect group and reflected in WLC	Passed	

Logical ID	Feature Tested	Title	Description	Status	Defects
WirelessJ721S.007	Flexconnect AP	AP3600: Change the AP from flexconnect to local mode when the AP is in Flexconnect AP group.	To verify whether the AP gets removed from the Flexconnect AP group when AP is changed to local mode.	Passed	
WirelessJ721S.008	WEP Authentication	AP3600: Association of client through 3600 Flexconnect AP using WEP Authentication	To verify whether the client is successfully associated to the network through 3600 AP in flexconnect mode using WEP authentication	Passed	
WirelessJ721S.009	WPA Authentication	AP3600: Association of client through 3600 Flexconnect AP using WPA Authentication	To verify whether the client is successfully associated to the network through 3600 AP in flexconnect mode using WPA authentication	Passed	
WirelessJ721S.010	802.1x Authentication	AP3600: Association of client through 3600 Flexconnect AP using 802.1X Authentication	To verify whether the client is successfully associated to the network through 3600 AP in flexconnect mode using WEP authentication	Passed	
WirelessJ721S.011	CKIP authentication	AP3600: Association of client through 3600 Flexconnect AP using CKIP Authentication	To verify whether the client is successfully associated to the network through 3600 AP in flexconnect mode using CKIP authentication	Passed	
WirelessJ721S.015	Flexconnect ACL	Applying FlexConnect ACL to WLC using NCS	To verify the flexconnect ACL created in NCS is applied successfully to the WLC.	Passed	
WirelessJ721S.016	Web auth	Configure web auth pre-authentication ACL-WLC	To verify the configuration of web auth pre-authentication ACL is successful for a WLAN	Passed	
WirelessJ721S.017	Web auth	Configure web auth pre-authentication ACL-NCS	To verify the configuration of web auth pre-authentication ACL for a WLAN in NCS is reflecting in WLC	Passed	

Logical ID	Feature Tested	Title	Description	Status	Defects
WirelessJ721S.018	Web auth	Web authentication using external web server.	To verify whether the client gets authenticated and joins successfully in a network through external web authentication.	Passed	
WirelessJ721S.019	Web auth	Web auth client roaming between APs in different flex group	To verify the web auth client roaming	Passed	
WirelessJ721S.020	Web auth	Modifying flexconnect ACL for the webauth WLAN	To verify the modification of flexconnect ACL for a webauth WLAN is successful	Passed	
WirelessJ721S.021	Web auth	Configuring Internal web-auth using NCS	To check the internal (Default) web-auth configuration in NCS reflects in WLC.	Passed	
WirelessJ721S.022	Web auth	Configuring Customized (Downloaded) web-auth using NCS	To check the Customized (Downloaded) web-auth configuration in NCS reflects in WLC.	Passed	
WirelessJ721S.023	External Web auth	Configuring External web-auth using NCS	To check the External web-auth configuration in NCS reflects in WLC.	Passed	
WirelessJ721S.024	External Web auth	Configuring External web-auth using WLC GUI	To check the External web-auth configuration in WLC	Passed	
WirelessJ721S.026	Web auth using NCS	Changing of Web auth configuration Template using NCS	To verify whether the newly applied template for web-auth in NCS will replace the existing web-auth type in WLC	Passed	
WirelessJ721S.027	Flexconnect	Association of existing client when flexconnect AP moves from connected mode to standalone mode.	To verify whether the existing client is still associated when the flexconnect AP moves from connected to standalone mode in local switching.	Passed	
WirelessJ721S.028	Flexconnect	Association of new client after the flexconnect AP moves to standalone mode from connected mode.	To check that the new client is not associated to the flexconnect AP in standalone mode	Passed	

Logical ID	Feature Tested	Title	Description	Status	Defects
WirelessJ721S.029	Flexconnect local switching	Clients between connected mode in local switching pass traffic between them	To check whether the clients associated to the flexconnect AP in connected mode can pass traffic like ping packets, FTP packets, etc between them.	Passed	
WirelessJ721S.030	Flexconnect local switching	Clients between standalone mode in local switching pass traffic between them	To check whether the clients associated to the flexconnect AP in standalone mode can pass traffic like ping packets, FTP packets,etc between them.	Passed	
WirelessJ721S.031	Flexconnect local switching	Configuring "session timeout" for flexconnect local switching wlans	To verify if session timeout is working for clients.	Passed	
WirelessJ721S.032	CIUS Authentication	CIUS association - (WPA/WPA2) (802.1X auth+ TKIP or AES encryption)	To check whether the CIUS is associated successfully into the network through WPA/WPA2 (802.1x auth+TKIP or AES encryption) authentication method	Passed	
WirelessJ721S.033	CIUS Authentication	CIUS association - WPA-PSK(TKIP)	To check whether the CIUS is associated successfully into the network through WPA-PSK(TKIP) authentication method	Passed	
WirelessJ721S.034	CIUS Authentication	CIUS association - WPA2-PSK(AES)	To check whether the CIUS is associated successfully into the network through WPA2-PSK(AES) authentication method	Passed	
WirelessJ721S.035	CIUS Authentication	CIUS association - WEP	To check whether the CIUS is associated successfully into the network through WEP authentication method	Passed	
WirelessJ721S.036	CIUS Authentication	CIUS Association through Dot1 X	To verify the CIUS is successfully authenticated and associated through Dot1X	Passed	



Logical ID	Feature Tested	Title	Description	Status	Defects
WirelessJ721S.037	7921G Authentication	Associating 7921G IP phone - WEP	To check whether the 7921G IP phone is associated successfully into the network through WEP authentication method	Passed	
WirelessJ721S.038	7921G Authentication	Associating 7921G IP phone - WEP	To check whether the 7921G IP phone is associated successfully into the network through WEP authentication method	Passed	
WirelessJ721S.041	2500 compatability with NCS	CT2500: Adding controller to NCS.	To verify whether the Controller is added successfully in NCS	Passed	
WirelessJ721S.042	Clean air in 2500	CT2500: Enable cleanair to check unlicensed band interference.	To check whether the unlicensed band devices are identified.	Passed	
WirelessJ721S.043	Web auth in 2500	CT2500: Configuring web-auth-L3 security	To check the web-auth configuration in the Controller	Passed	
WirelessJ721S.047	External Web auth	CT2500: Configure External web-auth for the controller.	To verify the configuration of external web auth is successful for the controller	Passed	
WirelessJ721S.048	Web auth	CT2500: Configure web auth pre-authentication ACL	To verify the configuration of web auth pre-authentication ACL is successful for a WLAN	Passed	
WirelessJ721S.049	Flexconnect ACL	CT2500: Creating Flexconnect ACL	To verify the flexconnect ACL is successfully created.	Passed	
WirelessJ721S.050	Flexconnect ACL	CT2500: Applying FlexConnect ACL to the WLAN	To verify the FlexConnect ACL is applied successfully to the WLAN	Passed	
WirelessJ721S.101	User Groups	MSE: Adding users groups for MSE	To verify if users groups are created successfully in MSE	Passed	
WirelessJ721S.102	MSE	MSE: Downloading logs from MSE through NCS	To verify if log files are downloaded successfully in MSE	Passed	
WirelessJ721S.103	MSE	MSE: Downloading log files of specific MAC addresses	To verify if log files are downloaded for a specific MAC address	Passed	

Logical ID	Feature Tested	Title	Description	Status	Defects
WirelessJ721S.105	Event Definition	MSE: Deleting event definition in MSE	To verify if event definition is deleted from MSE	Passed	
WirelessJ721S.106	Report in MSE	MSE: Creating a device utilization report for MSE	To verify if MSE report is generated successfully	Passed	
WirelessJ721S.113	MSE traps	MSE: Adding trap destination in MSE	To verify if trap destination is added properly	Passed	
WirelessJ721S.114	NMSP connection status	MSE: NMSP connection status for MSE	To verify if NMSP connection status between MSE and WLC	Passed	
WirelessJ721S.115	MSE Alarms	MSE: Assigning and unassigning the alarms	To verify if Alarms are assigned properly	Passed	
WirelessJ721S.117	MSE Events	MSE: Configuring the number of days to keep the event	To verify if events are cleared after the configured no. of days	Passed	
WirelessJ721S.118	WIPS service in MSE	MSE: Configuring the AP in WIPS mode	To verify if AP is working in WIPS mode	Passed	
WirelessJ721S.119	Recovering password	MSE: Recovering the lost password in MSE	To verify if lost password is recovered successfully	Passed	
WirelessJ721S.120	Recovering root password	MSE: Recovering the lost root password in MSE	To verify if lost root password is recovered successfully	Passed	
WirelessJ721S.121	WIPS Profile	MSE: Configuring WIPS profile	To verify if WIPS profile is configured through NCS	Passed	
WirelessJ721S.122	Policy rule in MSE	MSE: Modify the policy rule in MSE	To verify if policy rule for WIPS is modified successfully	Passed	
WirelessJ721S.123	MSE Alarms	MSE: Viewing MSE alarm details in NCS	To verify if alarm details are displayed properly in MSE	Passed	
WirelessJ721S.124	MSE Alarms	MSE: Assigning an alarm	To verify if alarm has assigned properly	Passed	
WirelessJ721S.125	MSE Alarms	MSE: Clearing and deleting alarms	To verify if alarms are cleared successfully	Passed	
WirelessJ721S.126	WIPS Report	MSE: Creating new WIPS security and alarms report	To verify if WIPS security and alarm reports are created successfully	Passed	
WirelessJ721S.127	WIPS Report	MSE: Viewing scheduled WIPS report run	To verify if scheduled reports are displayed properly	Passed	

Logical ID	Feature Tested	Title	Description	Status	Defects
WirelessJ721S.128	MSE monitoring	MSE: Viewing the clients detected by MSE	To verify if clients detected by MSE are displayed properly	Passed	
WirelessJ721S.129	RRM	MSE: Configuring an RRM Threshold Controller (for 802.11a/n or 802.11b/g/n)	To verify if RRM threshold is successfully in controller	Passed	
WirelessJ721S.130	RRM	MSE: Configuring 40-MHz Channel Bonding	To verify the 40-MHz channel bonding has been created in WLC through NCS	Passed	
WirelessJ721S.131	RRM	MSE: Configuring an RRM Threshold Template for 802.11a/n or 802.11b/g/n	To verify the RRM configuration template functionality	Passed	
WirelessJ721S.132	RRM	MSE: Configuring an RRM Interval Template (for 802.11a/n or 802.11b/g/n)	To verify RRM interval template functionality	Passed	
WirelessJ721S.133	MsE license	MSE: Revoking MSE license using MSE CLI	To verify if MSE license is revoked using MSE CLI	Passed	
WirelessJ721S.134	NMSP parameters editing	MSE: Editing NMSP Parameters for a Mobility Services	To verify editing NMSP parameters for MSE is successful.	Passed	
WirelessJ721S.136	MSE monitoring	MSE: Monitoring Wired Switches	To verify the wired switched details are displaying correctly in MSE	Passed	
WirelessJ721S.137	MsE license	MSE: Removing license file from license centre	To verify if license file is removed successfully from license centre	Passed	
WirelessJ721S.138	MSAP Service	MSE: Provisioning MSAP service advertisement	To verify if MSAP advertisement are provisioned successfully	Passed	
WirelessJ721S.139	MSAP Service	MSE: Deleting service advertisement from MSAP	To verify if license file is removed successfully from license centre	Passed	

Logical ID	Feature Tested	Title	Description	Status	Defects
WirelessJ721S.140	802.11u	802.11u: Configuring 802.11u in WLC using CLI mode	To verify if 802.11u is configured successfully in WLC using CLI mode	Passed	
WirelessJ721S.141	802.11u	802.11u: Configuring 802.11u when AP is flexconnect mode	To verify if AP is configured with 802.11u when it is in flexconnect mode. Verify AP is not accepting the 802.11u configuration when it is flex mode	Passed	
WirelessJ721S.142	ISE Upgrade	ISE: Upgrading ISE	To verify if ISE upgrade is successful.	Passed	
WirelessJ721S.143	ISE backup	ISE: To perform on-demand back-up in ISE	To verify if backup is successful for ISE	Passed	
WirelessJ721S.144	ISE backup	ISE: Scheduling a backup through CLI	To verify if scheduled backup is working fine	Passed	
WirelessJ721S.145	ISE backup	ISE: scheduling backup using GUI	To verify if ISE scheduled backup is working fine in GUI	Passed	
WirelessJ721S.146	ISE backup restore	ISE: Restoring data from backup	To verify if data has been restored successfully	Passed	
WirelessJ721S.147	NTP	ISE: configuring NTP server time	To verify if ISE is synchronizing with NTP	Passed	
WirelessJ721S.148	ISE alarm	ISE: Configuring system alarm in ISE	To verify if system alarm is working properly in ISE	Passed	
WirelessJ721S.149	ISE report generation	ISE: Generating report in ISE	To verify if specific report has been generated successfully	Passed	
WirelessJ72RS.001	Flexconnect groups	Associating wireless data clients to APs in same Flex connect Groups which has WEP authentication.	To verify successful association of wireless data clients to the AP in same Flex connect group and has WEP authentication.	Passed	
WirelessJ72RS.002	Flexconnect groups	Associating wireless data clients to APs in same Flex connect Groups which has WPA authentication.	To verify successful association of wireless data clients to the AP in same Flex connect group and has WPA authentication.	Passed	

Logical ID	Feature Tested	Title	Description	Status	Defects
WirelessJ72RS.003	Flexconnect groups	Associating wireless data clients to APs in same Flex connect Groups which has WPA2 authentication.	To verify successful association of wireless data clients to the AP in same Flex connect group and has WPA2 authentication.	Passed	
WirelessJ72RS.004	Flexconnect local switching	HREAP: Authentication - WPA PSK	To verify when AP goes to flexconnect mode, the authentication WPA-PSK works for central to local switching.	Passed	
WirelessJ72RS.005	CKIP authentication	Authentication for the association of clients-CKIP	To verify the Authentication of the clients when connected to an AP.	Passed	
WirelessJ72RS.006	WPA Authentication	Authentication for the association of clients-WPA	To verify the Authentication of the clients when connected to an AP.	Passed	
WirelessJ72RS.007	Customized web auth	Customized web auth login page for the controller-Laptop,cius	To verify the successful customized web login page with internal authentication	Passed	
WirelessJ72RS.008	L3 security-VPN passthrough	Flexconnect: Configuring VPN pass through - L3	To verify the VPN pass through feature in flex	Passed	
WirelessJ72RS.009	L3 security-web auth	Flexconnect: Configuring Web auth - L3	To verify the web auth feature in flex	Passed	
WirelessJ72RS.010	Flexconnect groups	Roaming of wireless data clients within APs of one Flex connect group when controller is Down.	To check for the successful and seamless roaming of wireless data clients between APs of same Flex connect group when controller is "Down".	Passed	
WirelessJ72RS.041	LAG	Client Association with Light Weight Access Point after Link Aggregation failover	To verify the successful association of wireless client with Light Weight Access Point	Passed	
WirelessJ72RS.042	LAG	LAG failover -Ping,FTP (Refer-CSCth12513)	To verify the successful PING,FTP packets during LAG failover	Passed	

Logical ID	Feature Tested	Title	Description	Status	Defects
WirelessJ72RS.043	LAG	LAG Port status Trap Log with SNMP Manager (Refer: CSCto58101) Delay in Port Up down causes issues with LAG working on WLC	To verify the successful LAG port status message in SNMP manager	Passed	
WirelessJ72RS.045	Band selection	Configuring band selection in WLC	To verify the configured band selection is selected by AP	Passed	
WirelessJ72RS.046	Fast SSID changing	Configure Reporting Configuration for the Controllers through NCS	To verify that the configuration for reporting interferers through NCS will get reflected in CLI and GUI mode of Controller	Passed	
WirelessJ72RS.048		Configuring fast SSID changing using CLI	To verify if fast SSID is changing if it is configured using CLI	Passed	
WirelessJ72RS.049		Controller: Enable/Disable Unclassified Interferences-CLI	Checking for enabling/disabling Unclassified Interferences in CLI has been reflected in GUI mode	Passed	
WirelessJ72RS.050	RF Profile	Creating RF profile and applying it to AP groups	To verify that the newly created RF profile is applying successfully to AP Groups	Passed	
WirelessJ72RS.051	ACL Mapping	VLAN ACL Mapping in WLC	Check for the successful creation of VLAN ACL mapping using WLC.	Passed	
WirelessJ72RS.052	Licensing	Flexconnect: Permanent and evaluation licensing priority changing	To verify the permanent and evaluation license priorities	Passed	
WirelessJ72RS.054	LAG	LAG Port status Trap Log with SNMP Manager (Refer: CSCto58101) Delay in Port Up down causes issues with LAG working on WLC	To verify the successful LAG port status message in SNMP manager	Passed	

Logical ID	Feature Tested	Title	Description	Status	Defects
WirelessJ721S.051	Web Authentication	CT2500: Association of clients to the controller-Web Auth(Local Authentication)	To verify whether the clients are successfully authenticated and associated to the network through web-auth	Passed	
WirelessJ721S.052	Web Authentication	CT2500: Association of clients to the controller-Web Auth (RADIUS server Authentication)	To verify whether the clients are successfully authenticated and associated to the network through web-auth	Passed	
WirelessJ721S.053		CT2500: Association of clients to the controller-Passthrough	To verify whether the clients are successfully associated to the network through Passthrough	Passed	
WirelessJ721S.054		CT2500: Configuring L3 Security Conditional web redirect policy	To verify successful configuration and association of clients through conditional web redirect policy	Passed	
WirelessJ721S.055	Client link	ClientLink Configuration in WLC through CLI	To verify the successful configuration CLientLink in WLC	Passed	
WirelessJ721S.057	Roaming	802.11r ( represented by "11r" ) Client Association with AKM PSK	To verify client's initial association to a wlan with 11r enabled with ft-psk AKM Suite	Passed	
WirelessJ721S.058	Roaming	11r Client Association with 802.1X	To verify client's initial association to a wlan with 11r enabled with ft 802.1X AKM Suite	Passed	
WirelessJ721S.059	Roaming	Intra-controller roaming over the Air	To verify fast transition client roaming over the air within the same controller	Passed	
WirelessJ721S.060	Roaming	Inter-controller roaming over the Air.	To verify fast transition client roaming over the air between controllers	Passed	
WirelessJ721S.061		Reassociation timeout exceeded by the client	To verify that when the 11r client exceeds the Reassociation timeout, the controller drops the pre-authentication of the client	Passed	

Logical ID	Feature Tested	Title	Description	Status	Defects
WirelessJ721S.062		Group key update	To verify that group key is properly updated after client roaming.	Passed	
WirelessJ721S.063	L3 roaming	L3 roaming in AP group	To verify L3 roaming across AP groups using WLC and NCS.	Passed	
WirelessJ721S.064	Roaming	11r Initial Association - open security	To verify 11r initial association using open security	Passed	
WirelessJ721S.065	Roaming	Over-the-Air Roaming using open security	To verify 11r Over-the-Air Roaming using open security	Passed	
WirelessJ721S.066	Roaming	11r and 11i Client Association with 11i PSK and 11r PSK enabled	To verify both 11i as well as 11r clients can associate on the same wlan with AKM suites psk and ft-psk respectively	Passed	
WirelessJ721S.067	Roaming	11r and 11i Client Association on a wlan with 11i 802.1X and 11r 802.1X enabled	To verify both 11i as well as 11r clients can associate on the same wlan with AKM suites 802.1X and ft-802.1X respectively	Passed	
WirelessJ721S.068	Roaming	11r and 11i Client Association on a wlan with 11i CCKM and 11r 802.1X enabled	To verify both 11i as well as 11r clients can associate on the same wlan with AKM suites CCKM and ft-802.1X respectively	Passed	
WirelessJ721S.069	Roaming	Roaming across controllers with different AKM suites configured for same wlan WLC and NCS	To verify that roaming will fail when a given wlan is configured with different AKM suites on different controllers	Passed	
WirelessJ721S.070	Roaming	Intra-controller roaming over the Distribution System (referred as DS from here on).	To verify fast transition client roaming over the DS within the same controller	Passed	
WirelessJ721S.076	Roaming	802.11r CLIs Configuration.	To verify configuration of wlan 11r fast transition (ft) parameters using new 11r CLIs	Passed	



Logical ID	Feature Tested	Title	Description	Status	Defects
WirelessJ721S.077		TACACs Logging	To verify 11r CLIs (as listed in Test Case 1) are properly accounted in TACACs	Passed	
WirelessJ721S.078	802.11r fast transition	11r fast transition (ft) parameters - Save / Restore	To verify 11r configuration parameters are being saved and restored after WLC reboot	Passed	
WirelessJ721S.079	Roaming	11r parameters - XML upload/download	To verify that all the 11r parameters are retained after downloading the uploaded configuration	Passed	
WirelessJ721S.080	Roaming	XML upgrade/downgrade of 11r parameters	To test upgrade/downgrade scenarios with 11r configurations enabled	Passed	
WirelessJ721S.081		Show Commands	To verify that the new show commands work as expected	Passed	
WirelessJ721S.082		Debug Commands	To verify that the new debug commands work as expected	Passed	
WirelessJ721S.084	Fast transition	Fast Transition Parameters Configuration - web GUI	To Set and unset fast transition parameters (FT enable, Over the DS and Reassociation time) using the Web GUI	Passed	
WirelessJ721S.085	WPA2 authentication	Fast Transition WPA2 Policy Authentication Key Management - web GUI.	To verify Authentication Key Management parameters: dot1x, cckm, psk, ft-psk, ft-dot1x (ft fields applicable only when WPA2 is enabled)	Passed	
WirelessJ721S.086		Show running-config	To verify that "show running-config" displays the 11r specific parameters for each wlan	Passed	
WirelessJ721S.087		MSE: Adding MSE to NCS	Verifying the MSE is added successfully in NCS	Passed	
WirelessJ721S.088		MSE: Synchronizing MSE with WLC	To verify if MSE is synchronized with WLC	Passed	

Logical ID	Feature Tested	Title	Description	Status	Defects
WirelessJ721S.089	Licensing	MSE: Adding a License File to the MSE Using the License Center	To verify License of MSE has be uploaded successfully using License centre	Passed	
WirelessJ721S.090	Rebooting	MSE: Rebooting MSE from NCS	To verify MSE is rebooting from NCS	Passed	
WirelessJ721S.096		MSE: Synchronizing MSE with WLC	To verify if WLC is synchronizing with MSE	Passed	
WirelessJ721S.097	Event groups	MSE: Adding Event groups in MSE	To verify if Event group is added successfully in NCS	Passed	
WirelessJ721S.098	Event groups	MSE: Adding Event groups in MSE	To verify if Event group is added successfully in NCS	Passed	
WirelessJ721S.091		MSE: shut down MSE from NCS	To verify MSE is rebooting from NCS	Passed	
WirelessJ721S.092	Upgrade	MSE: Upgrading from 7.2.103.0 to 7.2.104.1	To verify MSE is upgraded successfully	Passed	
WirelessJ721S.093	Backup	MSE: Data Backup of MSE	Verifying MSE database backup has been successful	Passed	
WirelessJ721S.094	Restore	MSE: Restoring data backup of MSE	To verify if backup has been restored successfully in MSE	Passed	
WirelessJ72RS.011	Voice clients	Roaming of voice clients within APs of one Flex connect group when controller is Down.	To check for the successful and seamless roaming of voice clients between APs of same Flex connect group when controller is "Down".	Passed	
WirelessJ72RS.012	Roaming of voice clients	Roaming of voice clients between APs in same Flex connect group	To check for seamless roaming of voice client between Voice clients in same Flex connect group.	Passed	
WirelessJ72RS.013	Roaming	Roaming of data clients between APs in same Flex connect group.	To check for the seamless roaming from one AP to another from the same Flex Connect group.	Passed	
WirelessJ72RS.014	Fast Secure Roaming	Fast secure roaming	To verify fast secure roaming of clients.	Passed	

Logical ID	Feature Tested	Title	Description	Status	Defects
WirelessJ72RS.015		Controller: Configuring Interference detection and sources of interference need to be detected-CLI.	Checking for the changes made in Interference source detection in CLI will reflect in GUI mode	Passed	
WirelessJ72RS.022	IPv6	Registering Ipv6 client with WLC	Verifying if IPv6 client is registered with WLC	Passed	
WirelessJ72RS.023	IPv6 clients roaming	Two IPv6 clients roaming in same controller with 2 AP	To verify if two IPv6 clients are roaming successfully between two AP's	Passed	
WirelessJ72RS.024	IPv6 clients authentication	IPv6 client authentication using CKIP	To verify if IPv6 client is authenticated using CKIP	Passed	
WirelessJ72RS.025	AAA	Management User Login Auth(https) by Radius on WIRELESS LAN CONTROLLER	To verify the Management User Login Auth( https) by Radius on WIRELESS LAN CONTROLLER	Passed	
WirelessJ72RS.026	AAA	Management User Login Auth(telnet ) by Radius on WIRELESS LAN CONTROLLER	To verify the Management User Login Auth( telnet ) by Radius on WIRELESS LAN CONTROLLER	Passed	
WirelessJ72RS.027	AAA	Management User Login Auth(ssh ) by Radius on WIRELESS LAN CONTROLLER	To verify the Management User Login Auth( ssh) by Radius on WIRELESS LAN CONTROLLER	Passed	
WirelessJ72RS.028	AAA	Management User Login Auth(http) by Tacacs+ on WIRELESS LAN CONTROLLER	To verify the Management User Login Auth(http) by Tacacs+ on WIRELESS LAN CONTROLLER	Passed	
WirelessJ72RS.030	Failover	Status of existing wireless data clients associated with an AP in Flex connect mode incase of Controller failure.	To verify the status of the wireless data clients associated with an AP which is working in HREAP mode incase of controller failure.	Passed	

Logical ID	Feature Tested	Title	Description	Status	Defects
WirelessJ72RS.031	Failover	Status of existing voice clients associated with an AP in Flex connect mode incase of Controller failure.	To verify the status of the voice clients associated with an AP which is working in HREAP mode incase of controller failure.	Passed	
WirelessJ72RS.032	Failover	Association of a new wireless data client during controller failure.	To verify the addition of new clients during controller failure and particularly when the AP is in Flex Connect mode.	Passed	
WirelessJ72RS.033	Failover	Association of a new voice client during controller failure.	To verify the addition of new voice clients during controller failure and particularly when the AP is in Flex Connect mode.	Passed	
WirelessJ72RS.034		Add APs to Flexconnect AP groups using NCS	To verify addition of APs to Flex connect AP group using NCS and check for the reflection of the same in WLC page.	Passed	
WirelessJ72RS.035		Manual addition of AP as master in WLC - 1140 series	To verify manual addition of one of the 1140 series AP as master in WLC and check for the success of the same.	Passed	
WirelessJ72RS.036	Flex Connect Group	Adding single AP to two Flexconnect AP groups in WLC.	To check whether AP can be added in two Flexconnect AP groups using WLC.	Passed	
WirelessJ72RS.037	Flex Connect Group	Adding single AP as master to two Flex connect AP groups using NCS.	To check whether AP can be added as master in two Flexconnect AP groups using NCS.	Passed	
WirelessJ72RS.038	Autonomous to LWAPP	NCS: migrating autonomous AP to LWAP using the "Schedule for later date/time	To verify if autonomous AP is migrating to LAP immediately using the option " Schedule for later date/time"	Passed	
WirelessJ72RS.040	LAG	Enable Link Aggregation on the controller- LAP Local	To verify the Light Weight Access Point Registration/Join status on controller	Passed	

Logical ID	Feature Tested	Title	Description	Status	Defects
WirelessJ72RS.055	LAG	Enable Link Aggregation on the controller -LAP H-REAP Mode Ports)	To verify the Light Weight Access Point Registration status when one port fails	Passed	
WirelessJ721S.071	Roaming	Over the DS Inter-controller roaming	To verify fast transition client roaming over the DS between controllers	Passed	
WirelessJ721S.074	Roaming	Over the Air Inter-controller roaming with RIC Req	To verify fast transition client roaming over the Air between controllers with the client requesting for video as well as voice TSPECs	Passed	
WirelessJ72RS.017	Upgrade	Upgrading WCS to NCS	To verify if upgrading NCS from WCS is working properly	Passed	
WirelessJ72RS.018	Link test	Configuring link test in WLC	To verify the quality of the radio link between client and WLC	Passed	
WirelessJ72RS.019	Peer to Peer	WLC: Peer to peer blocking	To verify if clients in WLAN 1 will not be able to pass traffic to clients in WLAN2	Passed	
WirelessJ72RS.020	DTIM	Configuring DTIM period	To verify if DTIM feature is working fine in WLC	Passed	
WirelessJ721S.073	Roaming	Over the DS Intra-controller roaming with RIC Request	To verify fast transition client roaming over the DS within a controller with the client requesting for video TSPEC	Passed	
WirelessJ721S.075	Roaming	Over the DS Inter-controller roaming with RIC Request	To verify fast transition client roaming over the DS between controllers with the client requesting for video as well as voice TSPECs	Passed	
WirelessJ721S.095		MSE: Synchronizing MSE with NCS	To verify if NCS data is synchronizing with MSE	Passed	
WirelessJ721S.155	AAA	Authentication for iphone -ISE	To verify the iPhone authentication with dot1 X using ISE server	Passed	

Logical ID	Feature Tested	Title	Description	Status	Defects
WirelessJ721S.156	Samsung client authentication	Authentication for Samsung Client -ISE	To verify the Samsung phone authentication with dot1 X using ISE server	Passed	
WirelessJ721S.158	CIUS Authentication	Authentication for CIUS Client -ISE	To verify the CIUS Phone authentication with dot1 X using ISE server	Passed	
WirelessJ721.214		Restore operation in MSE	To verify the refresh button in working properly in MSE	Passed	
Wireless721SR.161		AP-manager interface removed from Web GUI in CT7510	To verify the AP-manager interface removed from Web GUI	Passed	
Wireless721SR.162		3600 Series Recovery Image Trace backs During Boot-up	To verify the 3600 Series Recovery Image Trace backs During Boot-up	Passed	
Wireless721SR.163	Shared secret key	WLC update the shared secret Key (greater than the previous shared key length)	To verify the WLC update the shared secret Key	Passed	
Wireless721SR.164	Shared secret key	WLC update the shared secret Key (Lower than the previous shared key length)	To verify the WLC update the shared secret Key	Passed	
WirelessJ721SR.168	Save/Run	NCS: Save/Run button in Report Launch pad	To verify whether "Save", "Run and "Save" buttons are working in Report Launch pad in NCS	Passed	
WirelessJ721SR.169	Restore	NCS: Restoring backup config	To verify whether the NCS service is working after restoring the backup config	Passed	
WirelessJ721SR.170	Channel Assigning	Static Channel allocation in WLC for an AP-40 MHz	To verify whether the channel can be allocated statically for an AP in 40MHz	Passed	
Wireless721SR.165		CT5508: Controller configuration Upload using TFTP server	To verify whether the configuration upload from a controller is successful	Passed	

Logical ID	Feature Tested	Title	Description	Status	Defects
WirelessJ721S.161	Layer 3 Web Authentication	Associating Clients using L3 Web-authentication through Management Interface-2504	To verify whether the clients got associated to the network successfully	Passed	
WirelessJ721S.162	Layer 3 Web Authentication	Associating Clients using L3 Web-authentication through Management Interface-7500 flex controller	To verify whether the clients got associated to the network successfully	Passed	
WirelessJ721S.104	Event Definition	MSE: Adding event definition in MSE	To verify if event definition is added successfully in MSE	Failed	CSCtz16753
WirelessJ721S.154	AP uptime	NCS: Autonomous AP Uptime in NCS	To check whether the Autonomous AP uptime is showing correct data in Device Uptime Dashlet once inventory collection is successful	Failed	CSCtz36776
WirelessJ721S.152		NCS GUI : Check for the proper display of "Security " page under Selected WLAN	To check for the proper display of Checkboxes and Tabs in Configure->Controller->Select any Controller->Wlans->WLAN Configuration->Select any WLAN id->Security tab page	Failed	CSCtz17305
WirelessJ721S.153		NCS GUI : Checking for proper display of "Set System Time" page.	To check for the proper display of "Set System Time" in NCS through the path Configure->Controllers->any registered controller->system ->Commands->Select "Set System Time" from "Configuration Commands" drop down->go	Failed	CSCtz17266
WirelessJ721S.150		MSE:Refresh button checking in restoring database	To check if refresh button is working properly while restoring database in MSE	Failed	CSCtz39712

Logical ID	Feature Tested	Title	Description	Status	Defects
WirelessJ721S.157		Flex :Mode change from H-REAP to Local using NCS	To verify the Mode change from H-reap to local using NCS template	Failed	CSCty97632
WirelessJ721S.159		NCS: Disabling the client from NCS	To verify the behavior of Disable function in NCS	Failed	CSCtz34810
Wireless721SR.160	Copy and Replace	Copy and Replace operation in NCS	To verify the successful copy and replace of MAP in NCS	Failed	CSCtz80688
WirelessJ7LAP.81	Re-enable command	Disable and re-enable wireless client from NCS	NCS - add re-enable command under Monitor, Clients option	Failed	CSCtg06124
WirelessJ72S.204	SNMP Manager	LAG Port status Trap Log with SNMP Manager	Taking the log of LAG port using SNMP manager	Failed	CSCtq32444
WirelessJ72S.205	Log off	Controller: Working of Close button for the logoff process-Firefox	To verify the functionality of Close button for the complete process of a controller	Failed	CSCtx60949

## Related Documentation

### NCS 1.1 Configuration Guide

<http://www.cisco.com/en/US/docs/wireless/ncs/1.1/configuration/guide/NCS11cg.html>

### WLC 7.2 Configuration Guide

<http://www.cisco.com/en/US/docs/wireless/controller/7.2/configuration/guide/cg.html>

### Mobility Service Engine Configuration Guide

[http://www.cisco.com/en/US/docs/wireless/mse/3350/quick/guide/mse\\_qsgmain.html#wp1040488](http://www.cisco.com/en/US/docs/wireless/mse/3350/quick/guide/mse_qsgmain.html#wp1040488)

### Deploying Mobility Service Engine in Virtual Machine

[http://www.cisco.com/en/US/docs/wireless/mse/3350/7.2/wIPS\\_Configuration/Guide/msecg\\_virtual\\_appliance.html#wp1035925](http://www.cisco.com/en/US/docs/wireless/mse/3350/7.2/wIPS_Configuration/Guide/msecg_virtual_appliance.html#wp1035925)

### Configuring a WIPS in Mobility Service Engine

[http://www.cisco.com/en/US/docs/wireless/mse/3350/7.2/wIPS\\_Configuration/Guide/msecg\\_Configure\\_wIPS\\_Profiles.html](http://www.cisco.com/en/US/docs/wireless/mse/3350/7.2/wIPS_Configuration/Guide/msecg_Configure_wIPS_Profiles.html)



**Configuring Context Aware Services in Mobility Service Engine**

[http://www.cisco.com/en/US/docs/wireless/mse/3350/7.2/CAS\\_Configuration/Guide/CAS\\_72.html](http://www.cisco.com/en/US/docs/wireless/mse/3350/7.2/CAS_Configuration/Guide/CAS_72.html)

**Configuring Identity Service Engine**

[http://www.cisco.com/en/US/docs/security/ise/1.0.4/user\\_guide/ise104\\_user\\_guide.html](http://www.cisco.com/en/US/docs/security/ise/1.0.4/user_guide/ise104_user_guide.html)

