



Mobility Express

Simple. Easy to set up.
Easy to manage.

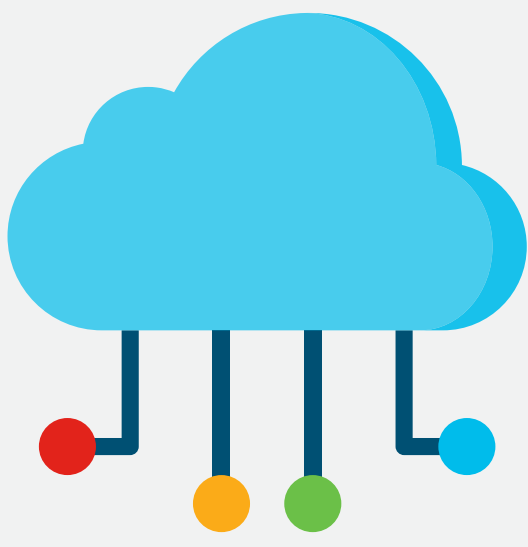
Delivering true enterprise Wi-Fi functionality at a small business price point.



What is Mobility Express?

The Mobility Express solution is a virtual wireless LAN controller that works with Cisco's Aironet access point series. It is easy to set up and manage, allowing users to enjoy true enterprise Wi-Fi at small business prices.

Mobility Express is supported on
Aironet Access Points 1830, 1850 2800, 3800, 1815.



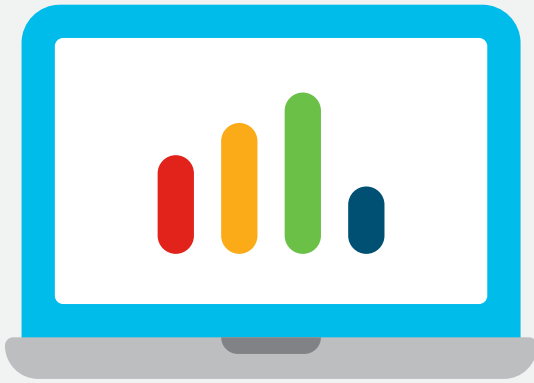
Get your Wi-Fi up and running in 10 minutes

With Mobility Express you can set up and manage your network within minutes, and you can simultaneously configure multiple access points with industry best-practice settings.



Simplify operations

Mobility express allows you the flexibility to manage up to 50 access points from a single 1815 access point and up to 100 access points when using the 2800 or 3000 series points.



Enjoy advanced features

Mobility Express' advanced software-based functions let you manage and troubleshoot your WLAN network with ease. The management dashboard is available via either a browser or a mobile app, and allows you to operate, monitor, and troubleshoot your network.

Aironet 1815

The 1815 access point series offers enterprise-class Wi-Fi as standard, at a competitive price, and works with Mobility Express to ensure that set-up is simple and easy.



1815i

The 1815i is quick to set up, reliable and discreet. The perfect indoor Wi-Fi device for small to mid-sized companies that want to provide enterprise-level networks at a fraction of the cost.



1815w

For multi-dwelling spaces like hotels, dormitories and assisted-living spaces, the 1815w access point can adhere directly and securely to a wall and, with its sleek design, is virtually invisible.



1815t

The 1815t access point offers teleworkers and micro office branches all the same features and connectivity of a home office, which means geography no longer interferes with production.