

Breakout Track 2
Future-Proofed Workplaces

Future-proof your workplace: How Cisco transformed its London office

George Dunn
Director Collaboration
Cisco UK & Ireland
Case study

Only

1 in 3

employees think the office is equipped to support hybrid work

Top reasons

1. Workspaces not effective for hybrid work
2. Need better technology and infrastructure
3. Meeting rooms not built to enhance productivity

72%

of employers plan
to redesign
workspaces in the
next 24 months

Top Drivers



Deploying hybrid work
technology & infra (67%)



Building sustainable &
ecofriendly features (47%)



Health and wellness
amenities (39%)



Regular enhancements
to workplace layouts &
meeting spaces (65%)

These cannot be
solved in isolation

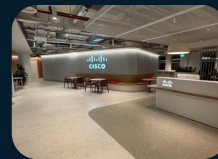
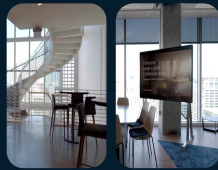
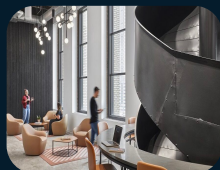
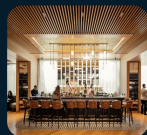
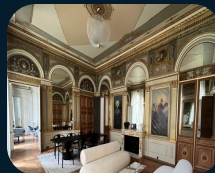
IT

Human Resources

Facilities

Cisco is leading the way

Cisco has been building Hybrid Work experience centers



New York City
2022

Chicago
2022

Atlanta
2023

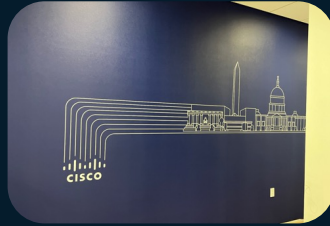
Paris
2023

London
2025

Projects In-Motion



Austin
May 2025



Washington DC – Phase 2
Fall 2025



London-Phase 2
Dec 2025



Tokyo
Late 2025

A modern office interior with large windows, a curved staircase, and a person sitting on a sofa. The space is bright and airy, with a high ceiling and a polished floor. The large windows offer a panoramic view of the city. A curved staircase with a glass railing leads to an upper level. A person is sitting on a sofa, looking at a laptop. The overall design is minimalist and functional.

93

Highest Leesman Index score of any office worldwide, in Atlanta

Creating an Intentional Use of Space



Customer Showcase

Primary locations representing core Cisco brand presence. Major business, economic, and community centers that serve to increase Cisco's brand recognition in the market



Talent Center

Key locations identified by a variety of criteria (Talent supply, Diversity, Affordability, etc.) focused on recruiting and retaining core talent across all lines of business



Operations Center

Locations representing specific and/or unique products, skills, or capabilities within Cisco Lines of Business



Product Center

Locations that play a key role in the development, testing, service or distribution of specific products or services with Cisco's overall product line



Enterprise Center

Major locations represented by significant populations across multiple lines of business - core campus locations

London

Before transformation

- Been in Finsbury Circus since 2009
- Fixed environment centered around individual working
- Minimal space for team working
- 90 desks 15 meetings room
- Meeting room scarcity and camping
- Minimal Video capabilities
- Lack of data insight mainly from badging rates

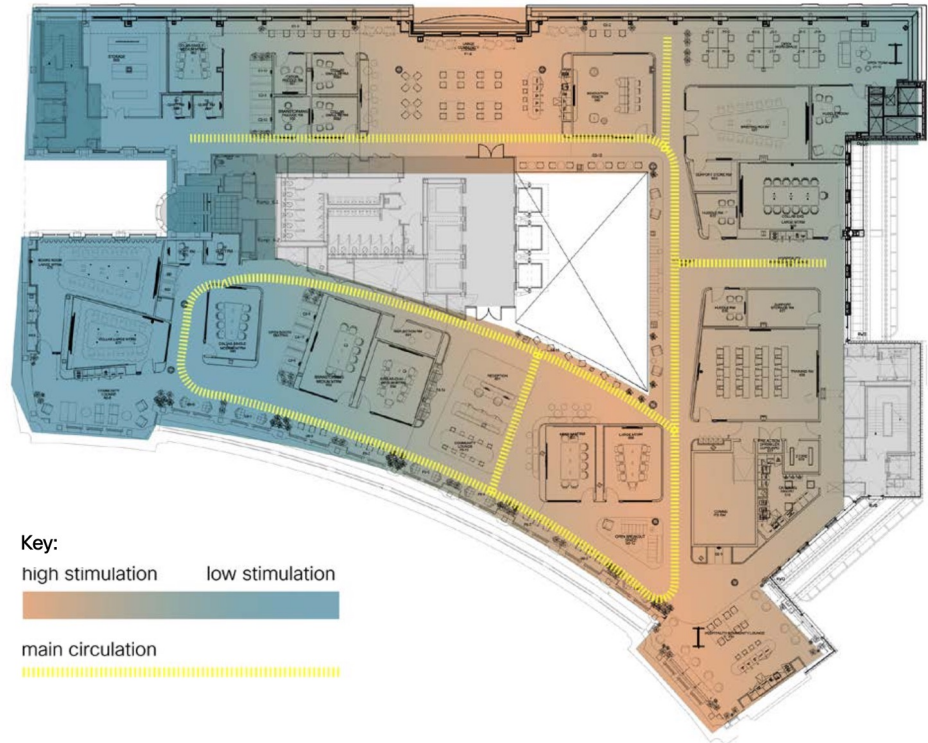


Design Philosophy

A Focus on Neurodiversity and Biophilia

- Diverse working styles
- Hypersensitive and HypoSensitive spaces
- Zoned quiet collaboration areas
- Wellness spaces
- Data driven

Level 6:
Customer Floor



London



2000 m² (42,000 ft²)
Completed: February 2025

- 3000 data points
- 22 Wireless Access Points
- Video everywhere
- Lighting, sensor, shading and sit stand desks low voltage POE
- LEED Gold and Well Platinum
- 50 individual desk, 40 touchdown spaces and 240 flexible seating spaces
- Lon06 plus Lon07 (phase 2) 4000 m² combined with Meraki Finsbury Square will provide support for 700 employees



Key drivers to reimagine the workplace



Re-balance Space
(Hybrid Work)



Support Cisco's
Sustainability Goals



Focus on Health
and Wellness



Digitizing our real
estate platform

Key drivers to reimagine the workplace



Re-balance Space (Hybrid Work)

Focus on Collaboration, Learning
and Socializing

Moving to an un-assigned space
management model

Ensuring frictionless experiences



Support Cisco's Sustainability Goals



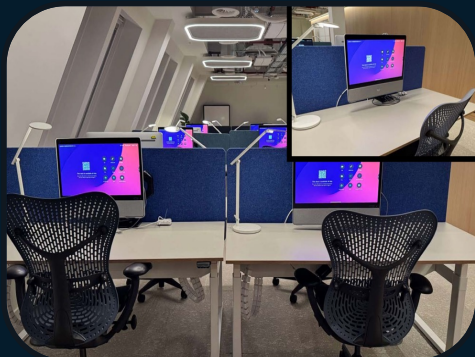
Focus on Health and Wellness



Digitizing our real estate platform

10%

Focused



Hot Desk

55%

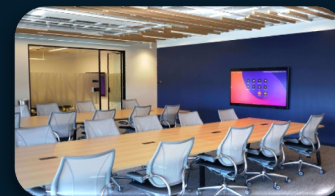
Collaboration

Space Mix



35%

Flex Space



Community Tables



Banquettes



Looking not only at
at space design



Understanding intent



Information Sharing



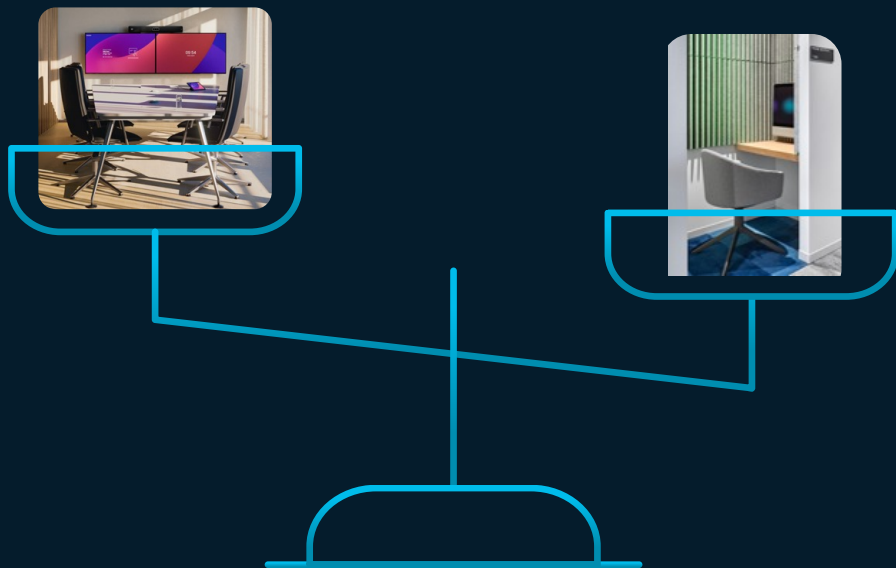
Decision-making



Brainstorming/ Ideation



Team Building



Balancing ad-hoc vs. bookable space management

A photograph of a modern office hallway. On the right, there is a wall of glass doors. A red laser line is projected from a sensor on the wall, hitting a door handle. The hallway leads to a brightly lit area in the background.



Key drivers to reimagine the workplace



Re-balance Space (Hybrid Work)

Focus on Collaboration, Learning
and Socializing

Moving to an un-assigned space
management model

Ensuring frictionless experiences



Support Cisco's Sustainability Goals

100% low voltage (PoE),
reducing our energy footprint

Eliminating embodied carbon

Creating new workplace
experiences

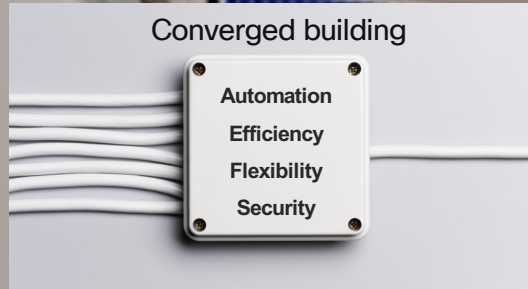


Focus on Health and Wellness



Digitizing our real estate platform

The network is a
foundation of the
hybrid workplace



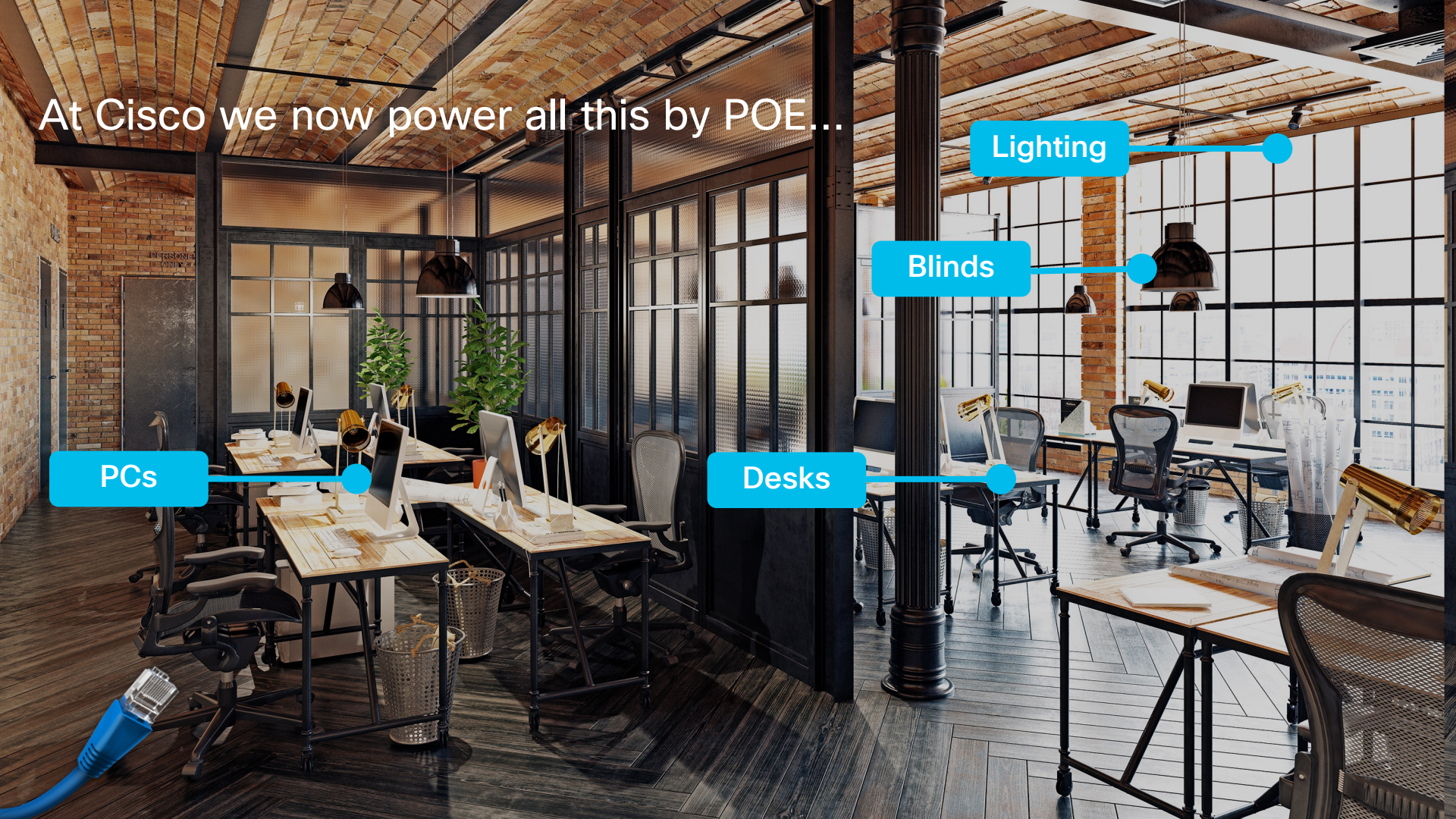
At Cisco we now power all this by POE...

Lighting

Blinds

PCs

Desks



Sustainability Results – New York

- Penn 1 Energy Usage Per Day (May 2019–Feb 2023)

CASE STUDY



Embodied Carbon Removal by moving to PoE

36% Energy Reduction

Ongoing Continuous Improvement

Note: Floorplate is the same and **occupancy has returned to pre pandemic levels** (like for like occupancy comparison).

Gone from 18 pre-retrofit to 90 Video enabled spaces (100%), increase in sensors and digital signage.

PoE reduces one-time and ongoing costs

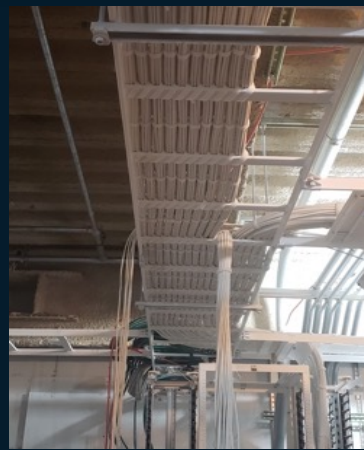
AC High Voltage & Conduit



- Labor intensive installation
- Stringent electrical codes
- Expensive to change configurations

“It costs us £500 to have an electrician come out and move a power socket”

DC Low Voltage Structured Cabling



- Faster install – pull 30+ cables in one go
- Structured cabling cost / labor structure
- Flexibility to reconfigure

20% Energy loss when power is converted from A/C to D/C

Key drivers to reimagine the workplace



Re-balance Space (Hybrid Work)

Focus on Collaboration, Learning
and Socializing

Moving to an un-assigned space
management model

Ensuring frictionless experiences



Support Cisco's Sustainability Goals

100% low voltage (PoE),
reducing our energy footprint

Eliminating embodied carbon

Creating new workplace
experiences



Focus on Health and Wellness

Maximizing Natural Daylight,
Monitoring Air Quality and
Minimizing external noise

Meeting WELL standards

Transparency of office
conditions to employees
and visitors



Digitizing our real estate platform

Optimize real estate and support wellbeing



Ensure healthy occupancy levels in meetings via smart sensors

Get alerts around energy inefficiencies and safety issues

Support employee wellbeing and build a sense of belonging by keeping track of noise levels, room acoustics, humidity, temperature, lighting conditions and air quality in the workspace

Inform facilities management around environmental conditions



People count



Lighting levels



Room acoustics



Humidity



Ambient noise



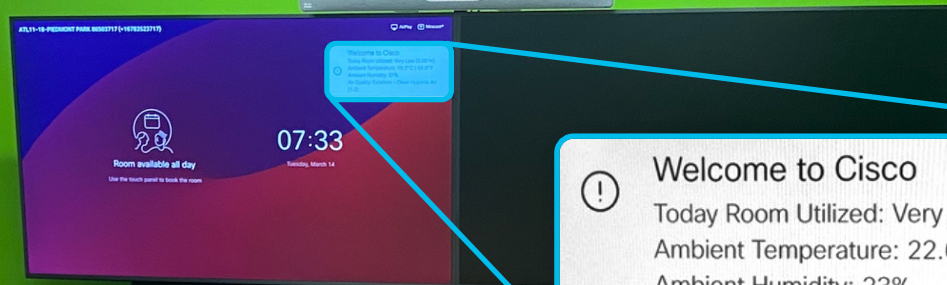
Overall noise



Temperature



Air quality



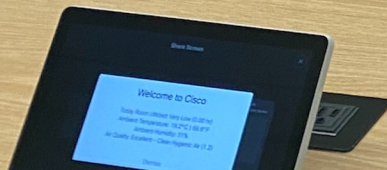
Welcome to Cisco

Today Room Utilized: Very Low (0.00 hr)

Ambient Temperature: 22.6°C | 72.7°F

Ambient Humidity: 23%

Air Quality: Good - Good Air Quality (2.4)



Key drivers to reimagine the workplace



Re-balance Space (Hybrid Work)

Focus on Collaboration, Learning
and Socializing

Moving to an un-assigned space
management model

Ensuring frictionless experiences



Support Cisco's Sustainability Goals

100% low voltage (PoE),
reducing our energy footprint

Eliminating embodied carbon

Creating new workplace
experiences



Focus on Health and Wellness

Maximizing Natural Daylight,
Monitoring Air Quality and
Minimizing external noise

Meeting WELL standards

Transparency of office
conditions to employees
and visitors



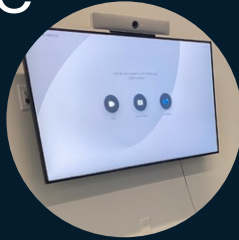
Digitizing our real estate platform

Harvesting data across existing
technology platforms driving
new analytics

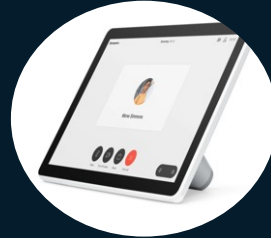
Moving towards the “informed
design” for new workplaces

Re-inventing facilities
management

Digitizing real estate



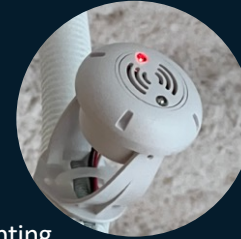
**Webex Room
Devices**
People count,
Ambient Noise



Webex Navigator
Temperature, Humidity,
VOC (volatile organic
compounds)



Meraki Sensors
Temperature, Humidity
Ambient Noise TVOC,
PM2.5, CO₂



**Lighting
Environment Module**
Temperature, Humidity TVOC,
PM 1.0/2.5/10, CO₂



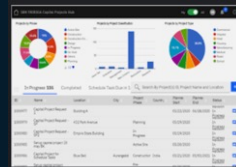
**Cisco Wi-Fi Access
Points**
People count, people's
physical location to track
their journey through the
office



Lighting Sensors
Occupancy and People
Count



Meraki Cameras
Floor occupancy
(macro floor plate loading)



**Workspace
Analytics**

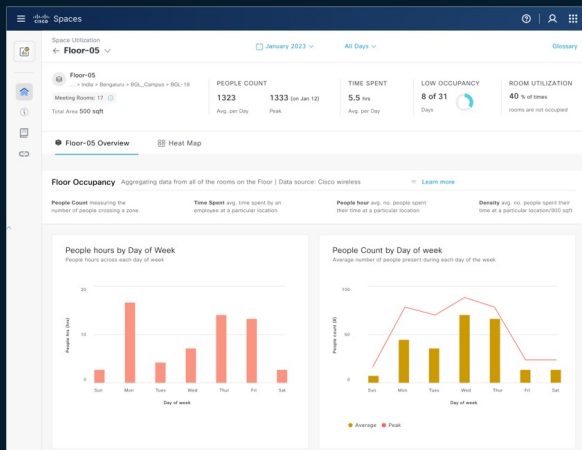


**Workspace
Tools**

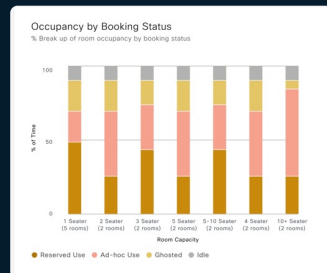


Shading Sensors
Lux levels, temperature

Space Utilization Analytics



Space Utilization App



See how your real estate portfolio is being utilized from a building to floor to workspace and desks

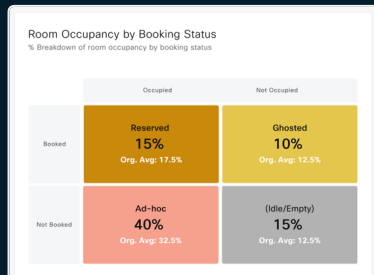
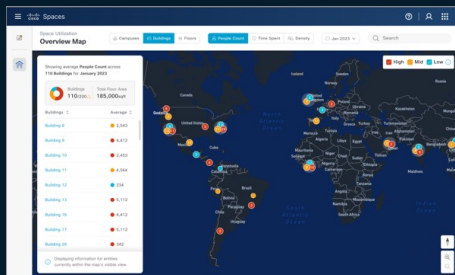
Understand meeting room usage, patterns of use, gain insights into bad behaviors

Uses

Right size real-estate based on actual usage

Adjust room capacities based on actual usage data and make decisions

Reallocate space from underutilized rooms and optimize your overall room footprint



Environmental Analytics

Environmental Analytics App

Consolidated view of environmental sensors

Get updates on deviations and anomalies

View and analyze detailed environmental trends at your workplace – air quality, temperature, humidity, co2, noise, etc.

Understand historic trends to inform building schedules

Uses

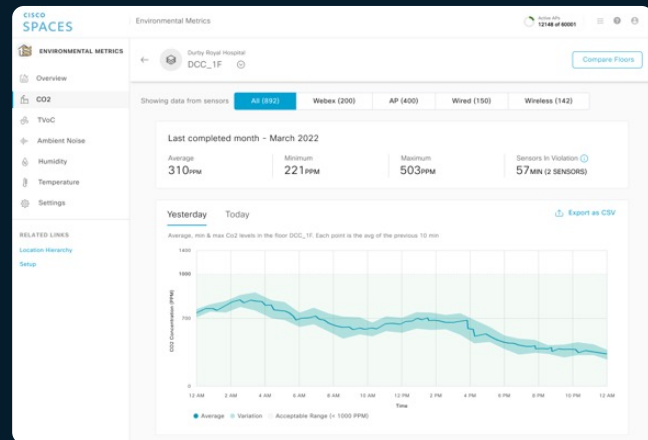
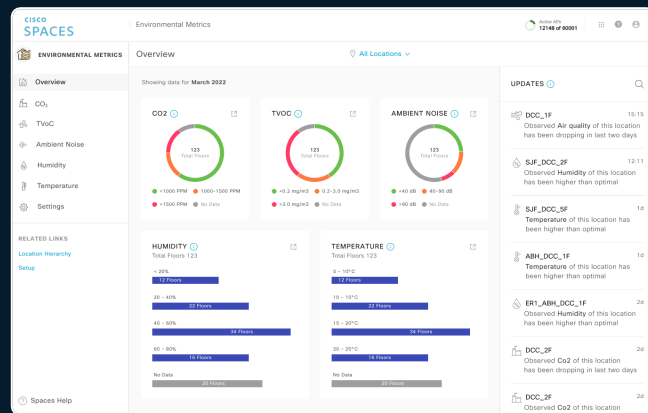
Ensure building systems are operating as expected.

Improve employee wellbeing, performance and productivity

Reporting to adhere to building certifications

Assess and improve performance of building's ventilation systems.

(air quality directly linked to cognizance and productivity)



Tiny bit on the tech behind the success

One Cisco: Collab + Networking + Spaces

HARDWARE FOUNDATION

1. Turn your Network into a Sensor



With
Cisco Networking & Collaboration Devices as the foundation

SOFTWARE PLATFORM

2. Transform buildings Into Smart Spaces



With
Cisco Spaces Platform

OUTCOMES

3. Deliver Unmatched Experiences



With
Smart Spaces Apps [Cisco Spaces & Partner]

A complete portfolio of devices certified for Microsoft Teams



INTEGRATED SYSTEMS



Desk Pro



Board Pro 55/75 G2
Board Pro 55/75



Room Kit EQX

VIDEO BARS & KITS



Room Bar



Room Bar Pro



Room Kit EQ



Room Kit Pro

ACCESSORIES



Room Navigator



Desk
Camera 4K



Headset 320
Series



Headset 720
Series



Bang &
Olufsen Cisco
950

A complete
portfolio of
devices certified
for Microsoft
Teams



INTEGRATED SYSTEMS

Presence

People Count

Ambient Light

Temperature

Humidity

Air Quality

General Noise

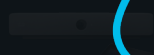
Ambient Noise

Reverb

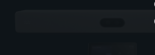
ACCESSORIES



Room Kit EQX



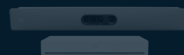
Room Bar



Room Bar Pro



Room Kit EQ



Room Kit Pro



Room Navigator



Desk Camera 4K



Headset 720 Series



Headset 720 Series

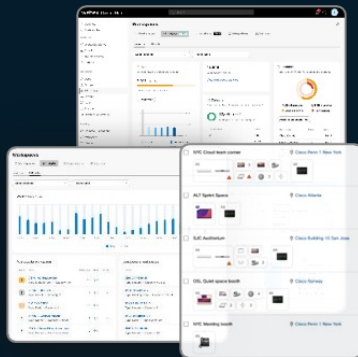


Bang & Olufsen Cisco 950

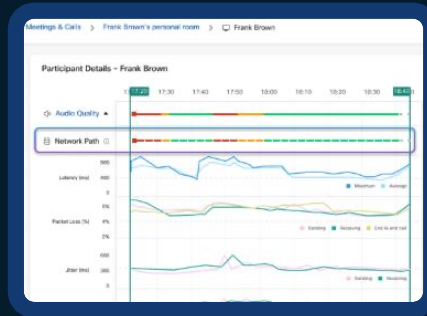
An end-to-end management and workplace solution



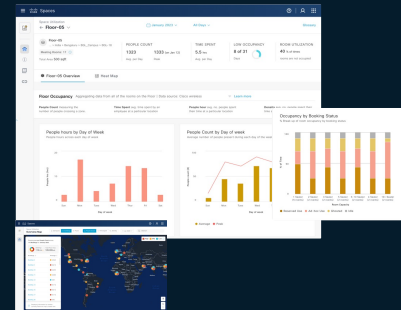
Cisco Devices
Always-on people count and environmental sensors.



Webex Control Hub
Get a view of your whole room (including peripherals).



Detect, diagnose, predict and optimize
ThousandEyes agents on Cisco devices provides network and app intelligence across devices.



Cisco Spaces
Smart Spaces outcomes
See how your real estate portfolio is being utilized from a building to floor to workspace and desks.

There are multiple paths to hybrid

Refresh

Transform



Room
Refresh



Workspace
Refresh



New
Construction



Workplace
Restack

Cisco modernizes New York City office

- Creating a space that increases productivity while cutting energy costs and waste

Core solutions: Catalyst 9000 switches/access points + Cisco Devices + Cisco Spaces + IoT technology + PoE + more



Hybrid work enablement

100% video-enabled spaces; 70% collaboration spaces (up from 30%)



Space optimization

Enabled 2X the people to be seated in half the space



Wellness and user experience

3X more employees coming in



Energy efficiency and sustainability

36% savings in energy consumption



Cost efficiency

5% reduction in CapEx and \$250k saved in construction costs



Summary

The workplace has to **work harder to earn the trust** and respect of employees.

The major consequence of embracing hybrid work is a more dispersed workforce, **connecting the disconnected** is critical.

The foundation of the hybrid workplace will be built on **bytes, not bricks**.

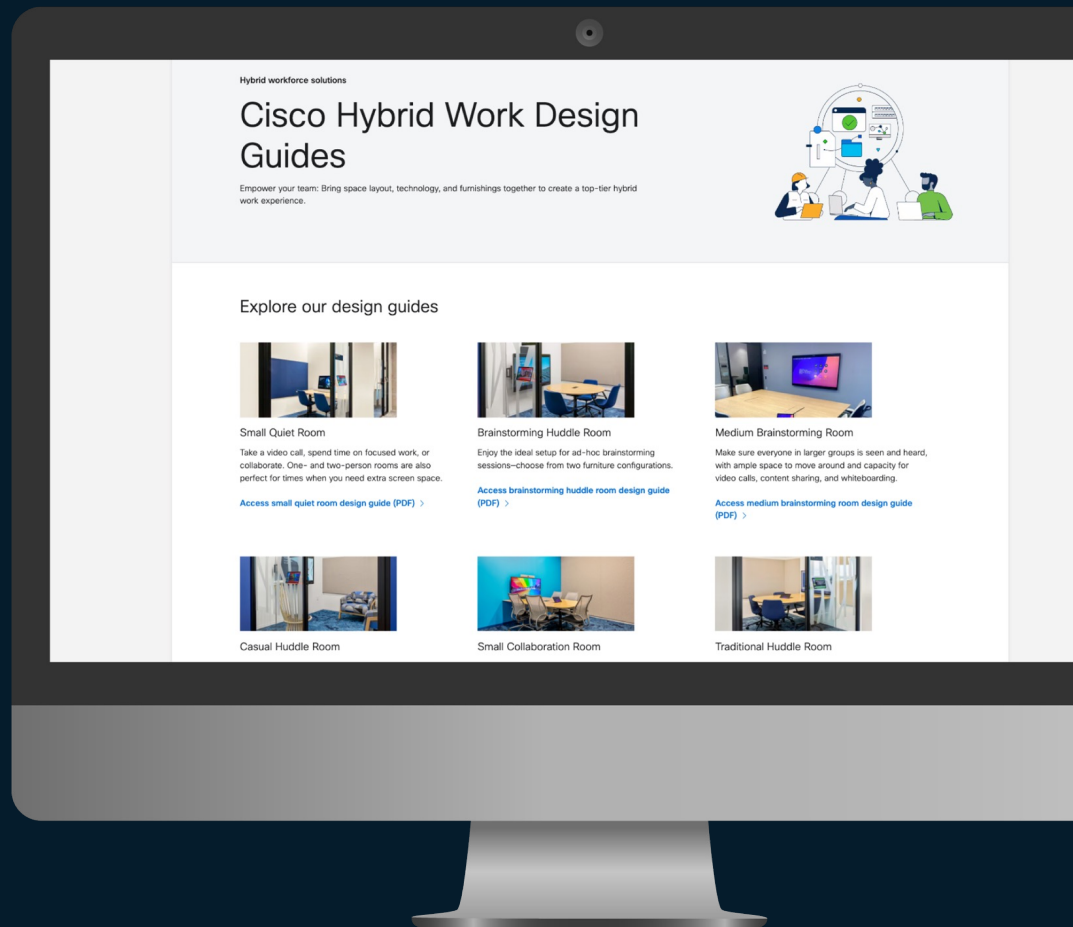
Success starts with a **partnership** between **IT, Real Estate** and **Human Resources**.

Design Guides available on Cisco.com

Hybrid Work Design Guides



Penn1 VR EXPERIENCE



Power up Cisco Devices for Microsoft Teams Rooms New Adoption Manual

Guided instructions, expert tips, checklists, and best practices to make your deployment journey smooth and adoption a success from day one!

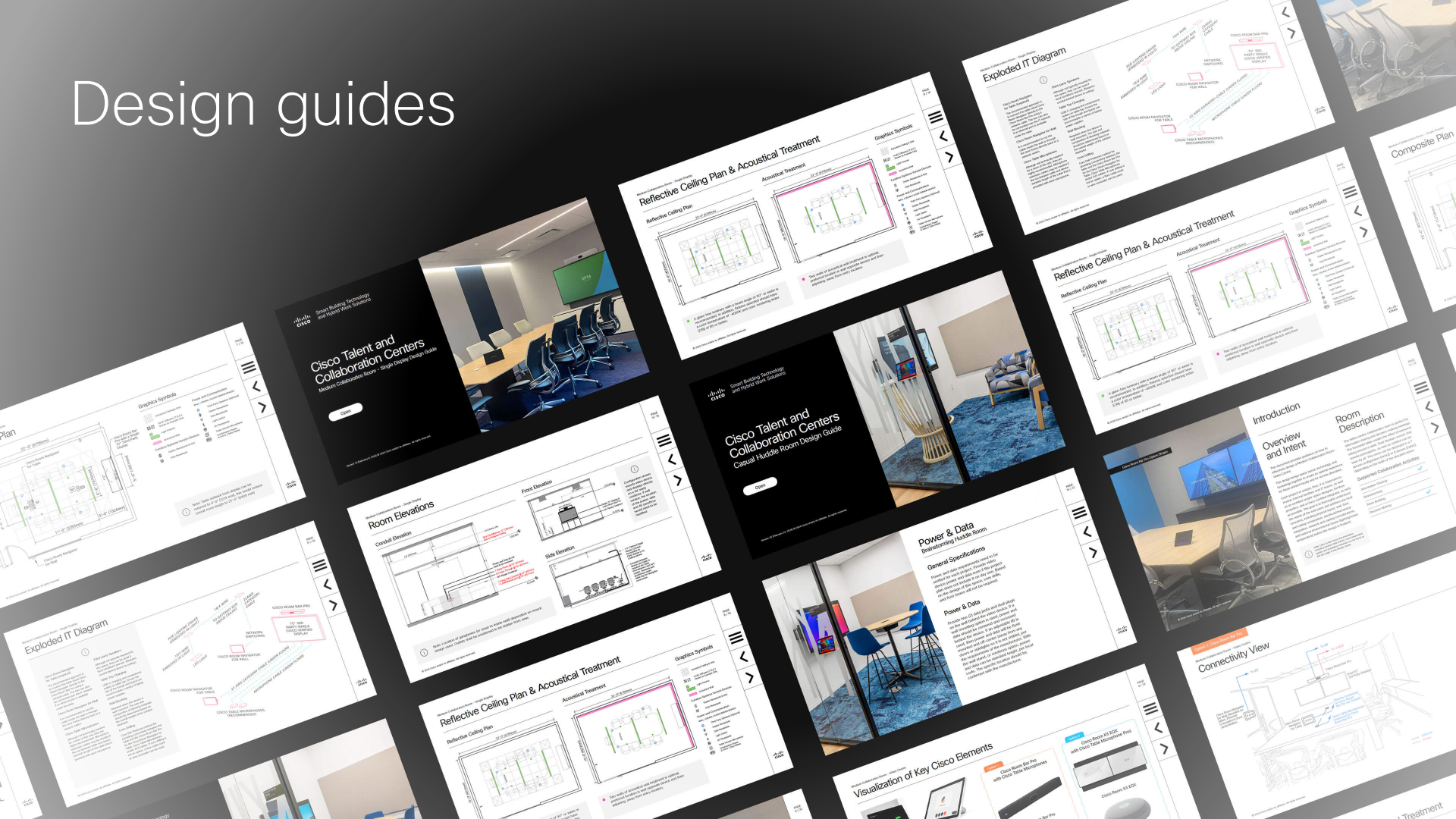


Scan to download

[Visit essentials.webex.com](https://essentials.webex.com)



Design guides



CISCO *Connect*

GO BEYOND

#CiscoConnect