

Is your WAN HSCN ready?



The Health and Care Social Network (HSCN) requires greater integration and collaboration between health and social care organisations than ever before.

Explore how our WAN technologies can support your transition through more secure, consistent and cost-effective health and care connections.

With Cisco, you can be confident you are investing in a platform that delivers for today's needs whilst providing the agility to consider emerging technologies like SD-WAN in the future by building on your investments.

Things to consider when building your new HSCN WAN:

1

Building a scalable and agile architecture that is closely coupled with business need



- Consider as many business and clinical use cases as possible in three primary domains:
 - **Operational excellence** – inward facing concerns relating to workforce and workplace
 - **Service delivery** – outward facing activity, including the provision of clinical and care services
 - **Effective partnering** – how organisations will collaborate more effectively across the health and care community
- Adopt a Whole Systems Approach, where all of these business needs are supported by common capability, and all are delivered from a secure, resilient and scalable infrastructure platform.

2

Understanding the changing requirements of the network



- How many users do you expect to join the network and how will this change over the next 5 years?
- What kind of devices will connect to the network and have you factored in growth due to trends like IOT and BYOD?
- Consider the use cases you have defined – which applications will be used and where are they hosted?
- Are more and more of your applications moving to the cloud? Is your WAN optimised for that?
- What experience do you need to deliver to your users?
- What are the sites bandwidth requirements; can you be smarter with how you consume bandwidth?
- Will your users be roaming across sites?
- How will your users connect securely regardless of location?

3

Choosing your WAN connectivity



- Will you have a primary and back-up at each site?
- Can you utilise your back-up link intelligently?
- Have you considered hybrid connectivity?

4

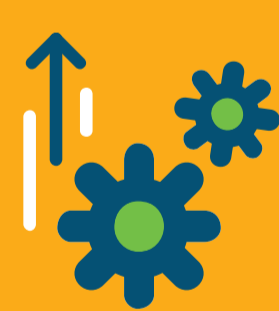
Securing your applications and infrastructure



- How will you ensure all sites have a common security architecture?
- Do you plan on using the internet as a connectivity method?
- How will you secure your traffic in a scalable way?
- How will you get real-time visibility in the case of a security breach?

5

Services to improve performance



- Quality of service
- Application recognition and control
- Performance routing so that traffic is always routed over the best path at any given time
- Unified policy-based security
- Agile WAN links based on real-time performance

HSCN is an opportunity to bring together health and care organisations like never before. In the drive towards a more regional approach, with Sustainability and Transformation Partnerships, Accountable Care Systems and devolved regions, the unifying capability of your network platform will underpin all of these aims. It is therefore imperative that your HSCN environment is designed with the necessary features and functionality to make this happen.

Talk to the experts

With dedicated UK Healthcare and Local Government teams in place for more than 18 years, our experience combined with our deep understanding of the needs of health and care communities, makes Cisco a trusted vendor of choice.

Our WAN technologies can support every aspect of your HSCN transition, so, **contact us** for further information on making sure your WAN is HSCN ready now – **0800 404 7778**.



<https://www.cisco.com/uk/healthcare>