

Realize SASE your way with Cisco



# Your journey to SASE

The demand for anywhere, anytime access has grown as the workforce has become more distributed and cloud traffic continues to soar.

How can IT leverage a simpler, more scalable method to securely connect users to the applications they need?

By bringing network and security functions closer to users and devices, at the edge—and moving to a cloud-based, as-a-service model called secure access service edge (SASE).



# Remote work accelerated in 2020 and with it, SASE adoption.

Gartner gave a name to an architecture that's been in motion for years, heightened by a sudden shift to remote work. While the principles of SASE were in place well before 2020, the pandemic brought SASE to the forefront as remote access to applications and 'work from anywhere' became a top organizational priority.

SASE marks a shift from the data center as the center of the universe to a more cloud-centric model. Organizations now need the ability to pivot on a dime to enable secure connectivity for in-office, work from home, or anywhere in between.

Simply put, SASE is another way to describe your journey to the cloud.

---

“SASE enables companies to operate during times of disruption and provides highly secure, high-performance access to any application, regardless of user location.”

Gartner's Initial Secure Access Service Edge Forecast

Joe Skorupa, Nat Smith 2020

- Gartner



# SASE is a journey many had already begun, one that Cisco has been on for years.

The first thing to know about SASE is that it's not a product, it's an architecture.

And because everyone starts from a different place, transitioning your network to the cloud is a journey. Some move fast while others take more of a stair-step approach.

SASE is a relatively new name but not new for us at Cisco. We've already built the foundation for SASE with our cloud-based, scalable architecture.

And we have the most complete, end-to-end SASE solution today.

## Did you know?

Gartner defines SASE through five primary services, each of which Cisco delivers today.

- SD-WAN
- Cloud access security broker
- Secure web gateway
- Cloud-delivered firewall
- Zero Trust network access

# With our platform you can accelerate your journey to the cloud.

---

## Cisco's 3 Cs for SASE:



**Connect** users and things to the applications they need



**Control** secure access from your data center to the cloud



**Converge** networking and security functions in a more integrated fashion

# And integrate networking and security in minutes.

Our SD-WAN and cloud-native security deliver complete protection in one unified offer.

Integrate SD-WAN with built-in, cloud-native security in one click and provide secure access wherever users and applications reside.

Cisco integrates Umbrella with every WAN edge device, making it easy for you to securely connect users at the home or branch office.

Cisco Secure Access by Duo ensures users are who they say they are, and devices are healthy before establishing the connection.



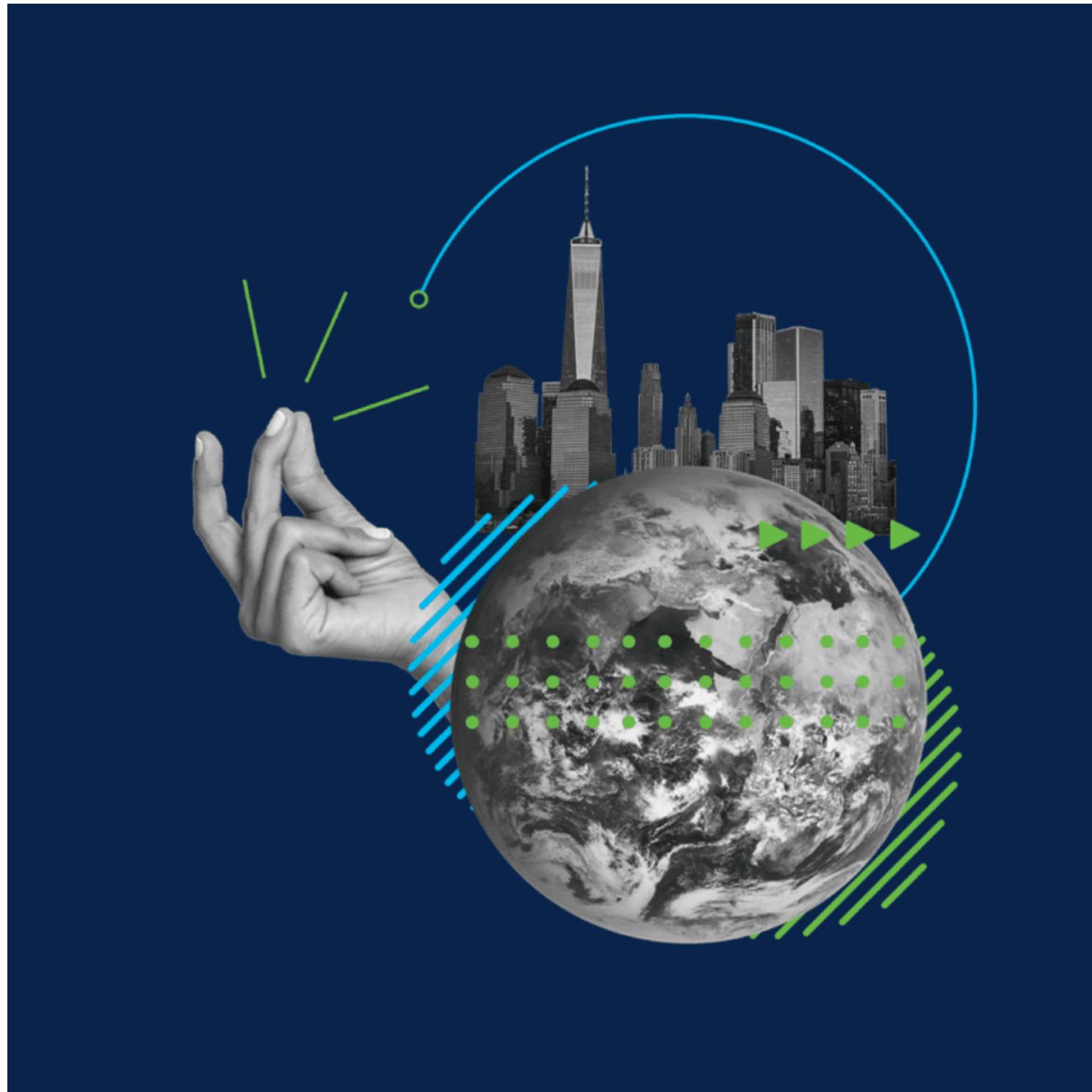
**Figure 1:** Cisco SASE architecture.

IaaS – infrastructure as a service • PaaS – platform as a service • SaaS – software as a service

# SASE use cases

Realize the benefits of SASE across any workforce environment with the best onboarding experience for users and IT.

Whatever your use case, we can quickly onboard you in a variety of ways through simple, automated solutions and remove time, cost and complexity from your deployment.



# Give remote workers secure access to applications.

Unleash your workforce by delivering a seamless connection to applications in any environment from any location.

Easily connect users to everything they need from your corporate environment and provide secure remote access to the cloud, data center, SaaS, IaaS and collocated facilities. Connect remote users with a single, unified policy—and keep them connected and protected when they're roaming.

Umbrella provides secure connectivity in a single push with a single policy, all part of the most comprehensive cybersecurity platform in the industry.



**Figure 2:** Cisco secure remote access architecture.

IaaS – infrastructure as a service • PaaS – platform as a service • SaaS – software as a service



# Extend control beyond the perimeter with Zero Trust.

Cisco Secure Access by Duo provides controls at the user and device level to verify user identity and device health. Duo establishes user and device trust and provides continuous visibility to extend trust on a per-session basis.

Duo enables customers to deploy zero-trust security measures both inside and outside the corporate network. Enforce consistent user and device-based access policy to reduce the risk of data breaches and meet compliance requirements.



## Did you know?

Cisco is a two-time zero-trust leader in The Forrester Wave: Zero Trust eXtended Ecosystem Platform Providers. Forrester gave Cisco the highest scores possible in the criteria of ZTX vision and strategy, market approach, ZTX advocacy and the future state of zero-trust infrastructure.

# Enable connectivity to branch offices with cloud-scale SD-WAN

Automate deployment of cloud security across your SD-WAN fabric to thousands of branches and instantly begin protecting against threats. Secure and connect users over any transport to any cloud with a simple and intuitive onboarding to SASE. Cisco SD-WAN delivers automated tunneling through one-click, full-mesh VPN between all branch locations so you can scale up or down with ease. End-to-end security segmentation honors enterprise intent and provides branches with secure connectivity to everything they need: from on-premises and colocated facilities to integrated cloud services ranging from AWS to Azure, and more.



**Figure 3:** Cisco SD-WAN enabled branch architecture.

IaaS – infrastructure as a service • PaaS – platform as a service • SaaS – software as a service

# Realize SASE your way with Cisco

To simplify management and interoperability between SASE components, Gartner recommends a consolidated, single vendor approach for networking and security.

Cisco has broken new ground with a convergence of these two functions, as networking and security are our core competencies.

With our automated capabilities you can quickly create an end-to-end SASE infrastructure in minutes, all from one vendor.



# Cisco has you covered for what's now and what's next

Because your cloud journey is unique, you need the flexibility to get there your way. At Cisco, we deliver secure connectivity for remote workers and branch offices in minutes—and with the depth and breadth of our unique portfolio, we can help you realize SASE a number of ways.

Build on what you already have and protect your investments by using an existing Cisco footprint. Scale up or down with personalized, flexible licensing and consumption models. And expand capabilities as you grow with an integrated platform approach and open APIs.



Our approach and capabilities are second to none.



**We're the proven networking and security leader**



Protects 100% of the Fortune 100



#1 in cybersecurity market share



#1 in SD-WAN market share



3x larger partner ecosystem than competitors

# And we can deliver immediate business outcomes with SASE.



73%

Reduction in application latency<sup>1</sup>



40%

Faster performance on Microsoft 365<sup>2</sup>



65%

Lower cost of connectivity<sup>3</sup>



59%

Faster onboarding of new services<sup>4</sup>



60%

Lower TCO for Zero Trust<sup>5</sup>

<sup>1</sup> [Miercom Labs report](#)

<sup>2</sup> [Cisco SD-WAN news release](#)

<sup>3</sup> [Cisco SD-WAN at-a-glance](#)

<sup>4</sup> [Cisco SD-WAN at-a-glance](#)

<sup>5</sup> [Cisco Secure Access by Duo](#)

# Learn more about how Cisco can help you realize SASE your way.

## Next Steps

Learn more about [Cisco SASE](#).

Interested in starting your SASE journey?

- Start a 14-day free trial of [Cisco Umbrella](#).
- Start a Cisco networking [free trial](#).
- Start a 30-day trial of [Duo](#).



Thank you for reading

# Realize SASE your way with Cisco

