

The AI-Ready Campus

Powering the Intelligent Edge with Cisco Smart Switches



Steven Johnson
Senior Product Manager
www.linkedin.com/in/steventhomasjohnson

The Resilient, Intelligent Edge Cisco's new family of Smart Switches

Operational simplicity

Automated, comprehensive, monitored, and orchestrated from the cloud or on prem

Scalable devices

High performance, power efficient, low latency, high bandwidth, high density, highly resilient

Security fused into the network

Comprehensive security with granular controls across all layers. Post Quantum Cryptography and Hybrid Mesh Firewall-compatible

Simplifying operations by Unifying our platforms

Catalyst

Catalyst Center

Catalyst License

Catalyst Hardware

MANAGEMENT

LICENSE

CISCO HARDWARE

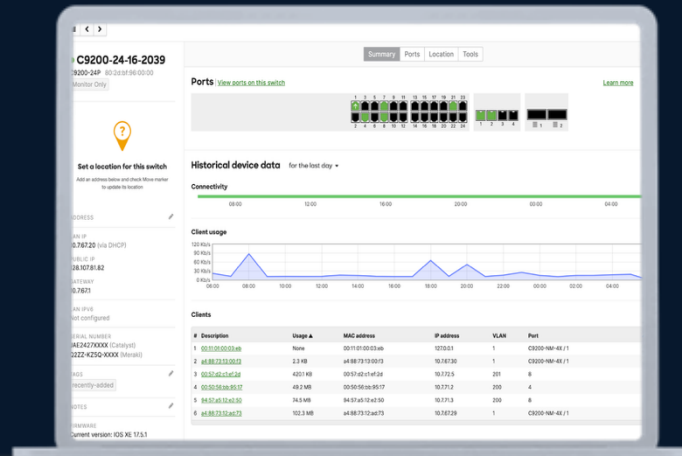
Meraki

Meraki Dashboard

Meraki License

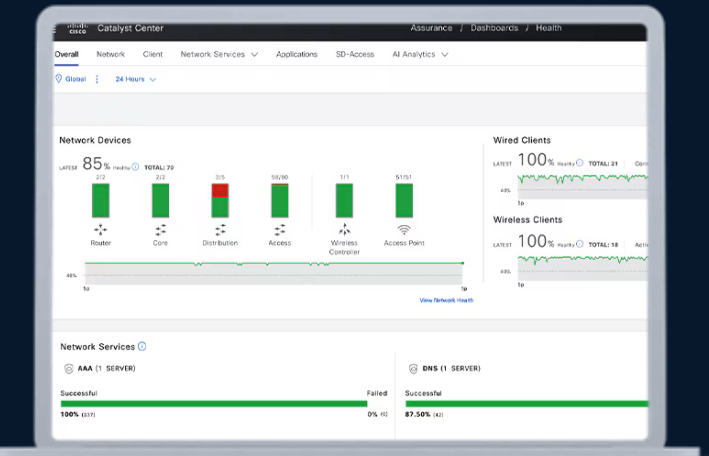
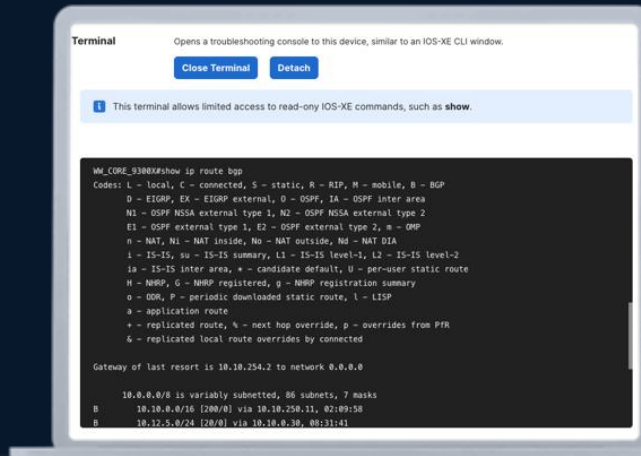
Meraki Hardware

We are now making it simpler to choose how you experience our platform



Cloud Management

Flexible options for managing your device from the Meraki dashboard.



On-Premise Management

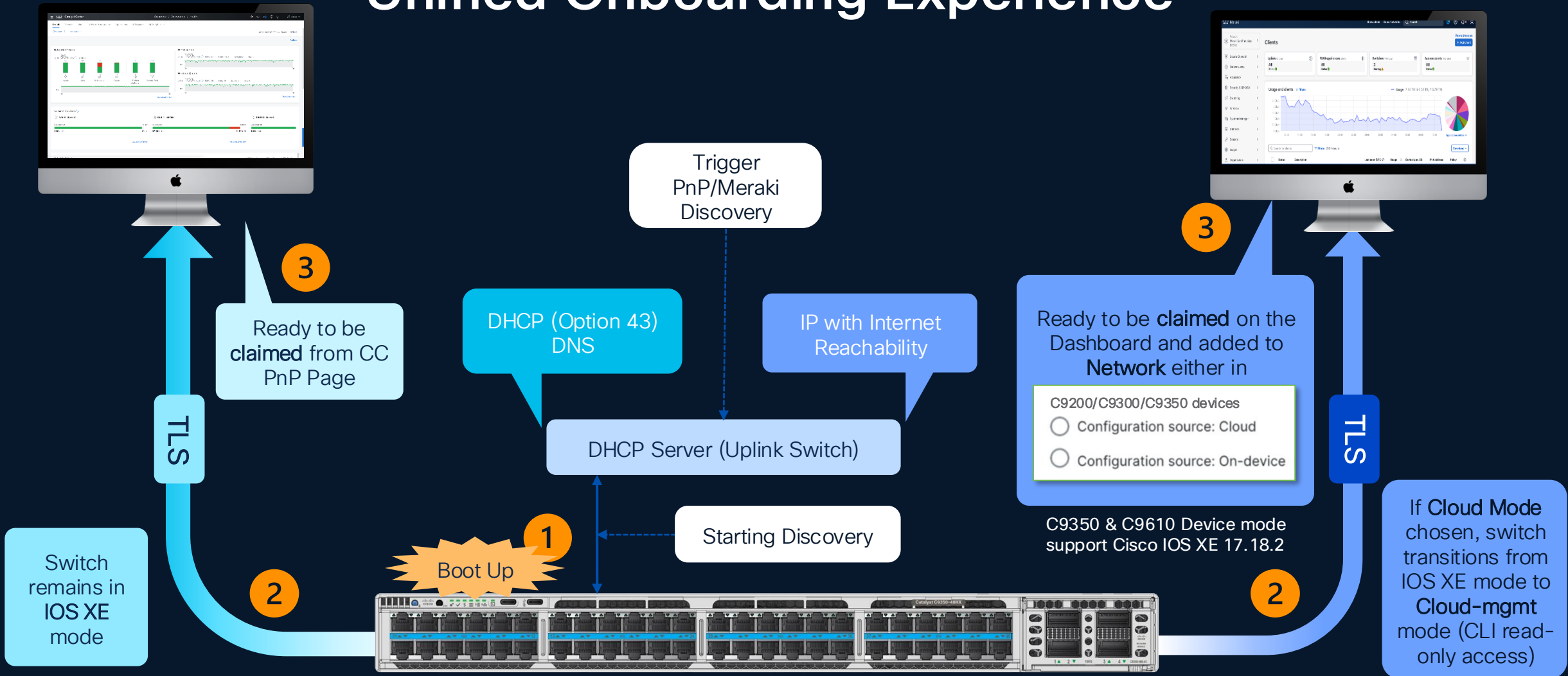
via CLI, Catalyst Center, etc.

One Device, One License, One OS, Multiple Ways to Manage

Unified Onboarding Experience

Catalyst Center

Meraki Cloud Dashboard



Cisco C9350 Series Smart Switch



New Developments for Catalyst in the Cloud



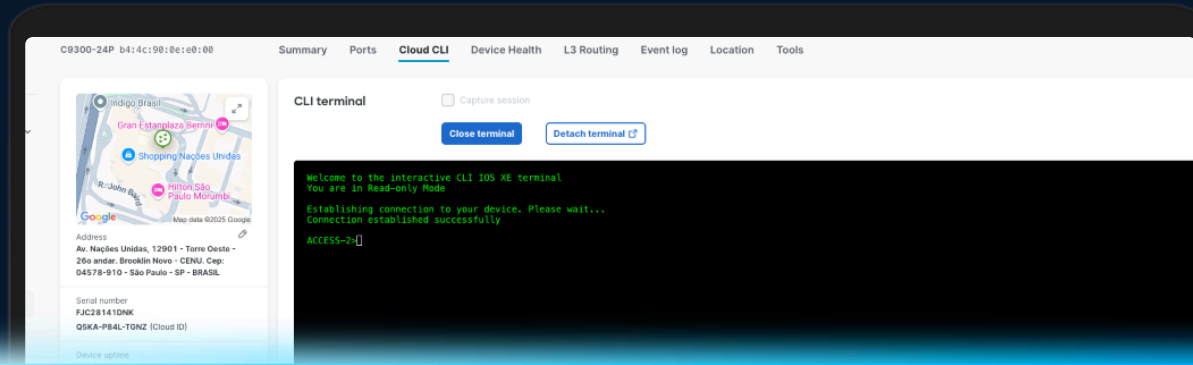
Native iOS XE support
(no more CS firmware)



Streamlined onboarding &
device registration



Expanded cloud CLI and
configuration options



New 17.18.2



Extend secure connectivity to
rugged outdoor networks
Targeting Spring 2026



IE3500

IOS XE 17.15

IOS XE 17.18



C9300L



C9300



C9300X



C9200L



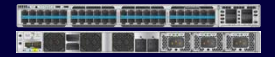
C9500



C9200/CX



C9300LM

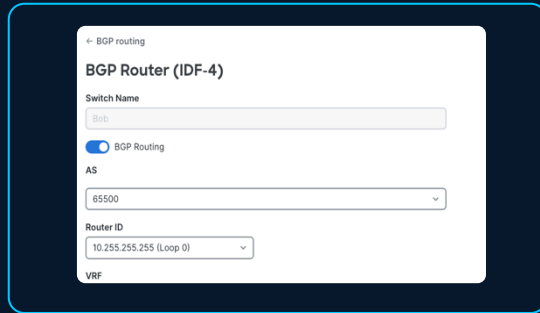


C9350

Recent Innovations and Roadmap Highlights

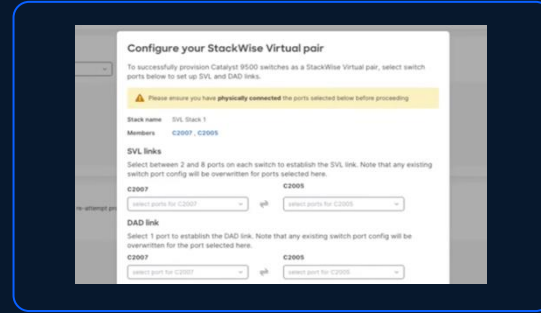
We are bringing advanced capabilities to our cloud platform

Advanced Routing



Support for **BGP**,
VRFs, and **Routed Ports**

High Availability



Support for In-Service Software Upgrade (ISSU), StackWise Virtual (SVL), and Rapid Per-VLAN STP+ (RPVST)

Cloud Expansion



Bringing parity to cloud managed Catalyst devices with **SmartPorts** (Profiles), **Intelligent Capture** (scheduling), **Device Uptime**, **Device Health**, and **Digital Optical Monitoring**

Additional Models Supported



Expanded platform support with Cisco Catalyst 9200/CX, C9300/LM, C9500H and now C9610

Bringing enterprise capabilities and scale to the cloud management experience

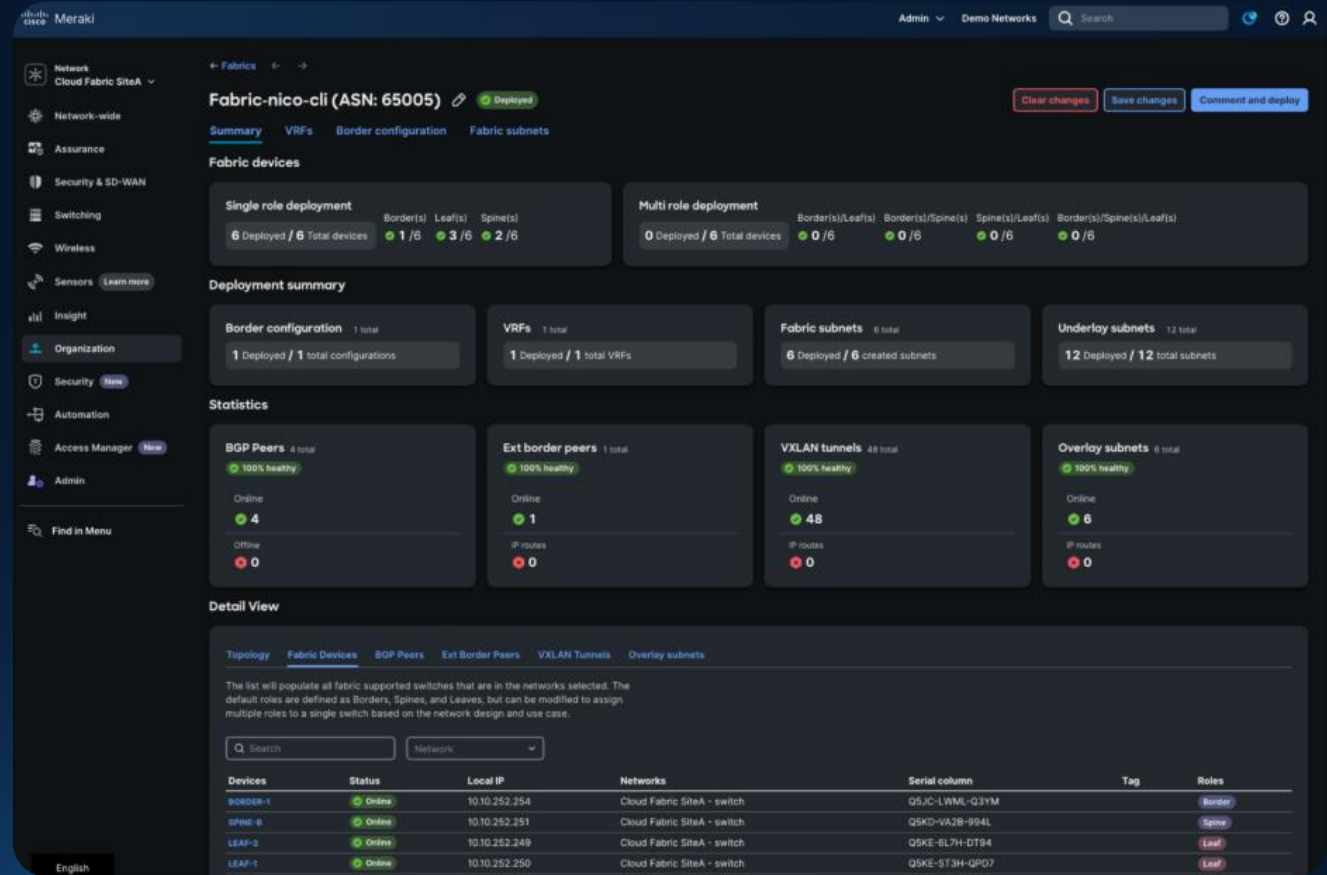
Seamlessly automate campus segmentation and high-availability

Generally Available

Automate management of large-scale campus switching and wireless deployments

Beta March'26

Introducing underlay to overlay migration tools, EVPN Multihoming, and expanded model support



Introducing Agentic Ops

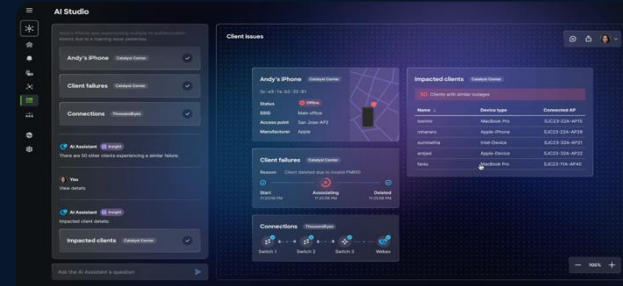
AVAILABLE NOW



AI Assistant

Accelerate network operations

BETA



AI Canvas

Cross-domain collaborative troubleshooting

POWERED BY CISCO'S DEEP NETWORK MODEL

The Resilient, Intelligent Edge Cisco's new family of Smart Switches

Operational simplicity

Automated, comprehensive, monitored, and orchestrated from the cloud or on prem

Scalable devices

High performance, power efficient, low latency, high bandwidth, high density, highly resilient

Security fused into the network

Comprehensive security with granular controls across all layers. Post Quantum Cryptography and Hybrid Mesh Firewall-compatible

Cisco Enterprise Switching Portfolio

A model for every use case

Cisco C9350 Smart Switch

The next generation of fixed access switches

1.6 Tbps stacking, 48 ports 90W PoE, Fast PoE, Perpetual PoE, 100G/50G/40G/25G/10G/1G uplinks, NG stacking



Cisco C9610 Smart Switch

The next generation of modular core switches

High density 25/50 Gigabit SFP and 100/400 Gigabit QSFP modular switches for enterprise campuses



Access Switching

Core Switching

Cisco IOS XE

C9200CX



Compact

C9200/L



Entry Access

C9300L/X/M



Critical Access

C9400



Modular Access

C9500



Fixed Core

C9500X



Fixed Core

C9600



Modular Core

C9600 G2



Modular Core



**No plans to EoS / EoL any Catalyst
9000 switches**

Statement of Direction

INTRODUCING

Cisco C9000 Series Smart Switches

Powerful, secure, easy to manage

Cisco Silicon One -
industry's most powerful,
programmable ASICs

High-performance,
Multi-core x86
CPU & DRAM

Secure
On-device
App Hosting

Universal PoE+
Perpetual PoE
& PoE Analytics

Cisco IOS XE
w/ Next-Generation
Stacking

Post-Quantum
Secure Boot &
Trustworthy Solution

Cisco C9350 Smart Switch



1.6 Tbps

*Stacking
bandwidth*

4x100G

*Uplink
Modules*

PQC

*Post-Quantum
Security*

4x

*Higher MAC &
ARP scale*

Cisco C9610 Smart Switch



25.6 Tbps

*System
bandwidth*

256x100G

*Modular
Line-Cards*

PQC

*Post-Quantum
Security*

10 slot

*To power
Core density*

Data Center Class Performance at the Edge

Bringing Silicon One Power to the Campus Access
Layer

Powered by Cisco Silicon One for Scale, Security, and Efficiency

- Boosts hardware encryption **post-quantum security**
- Delivers industry-leading performance with **deep buffers**, supporting up to **100G** uplinks and **multi-gigabit** access speeds.
- Flexible and programmable for future **AI** and **ML workloads**
- High-scale and **low latency** for time-sensitive applications
- **Efficient power** performance

16 nm
Technology

256K Routes
(16x UADP 2.0)

1.3 Tbps, 1.5 Bpps
ASIC Performance

Silicon One A100

C9350

The Intelligent Edge

Deploying Secure Edge Apps and SLMs for Real-Time Insights

Enhanced Application Hosting

Hosted applications offer faster response, better performance, and enhanced privacy

More resources mean:

- Improved app performance
- More apps per switch
- Support for demanding apps

IOS-XE



Kernel access

20 Gbps datapath

Containerized

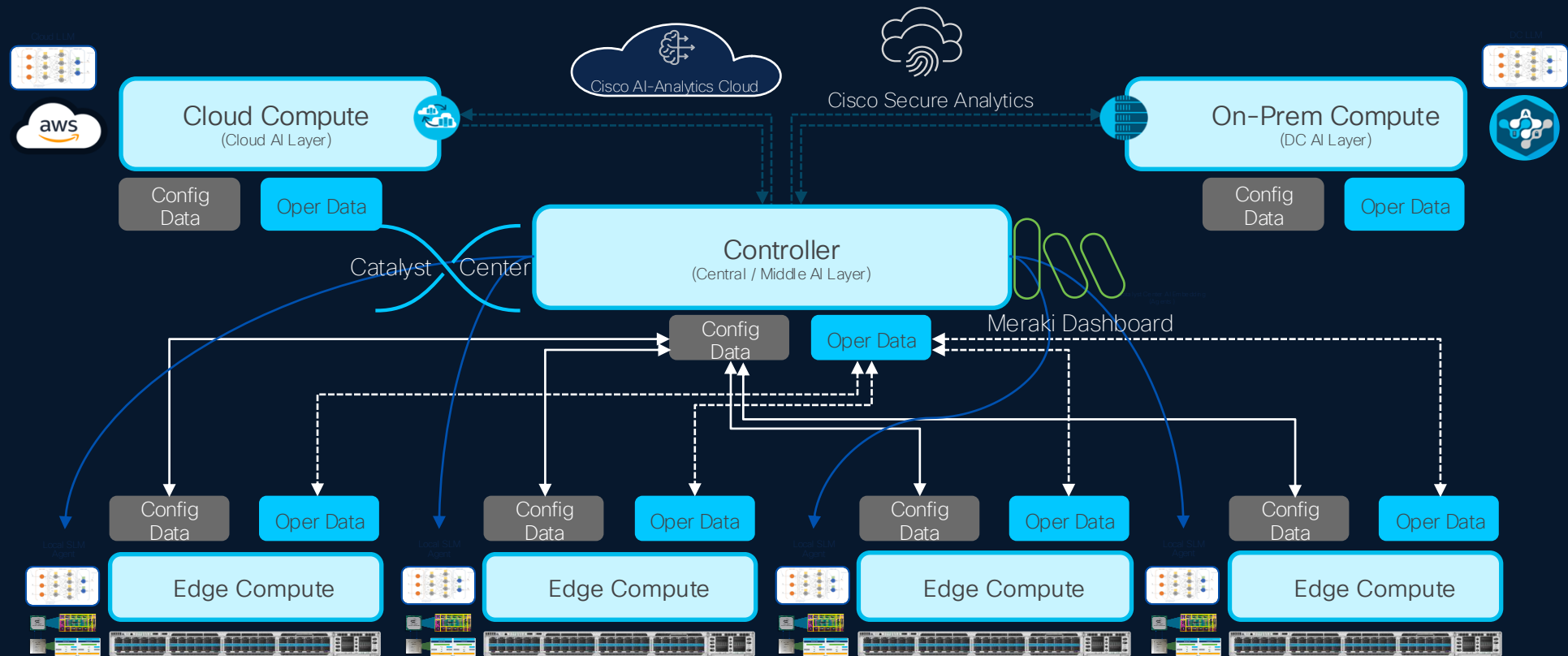
ThousandEyes
Cisco Spaces
Wireshark
Local DNS
AWS Greengrass
AI Workloads

Live Protect

Gen 12 CPU
4-core 2.4GHz

Hybrid AI Operations: Unifying Edge Intelligence and Centralized Visibility

Combine the power of **Distributed Edge AI** for deep local processing with holistic **Centralized AIOps** visibility for network-wide operations



Uncompromising Resilience

Guaranteeing Continuous Operations for Mission
Critical Workloads

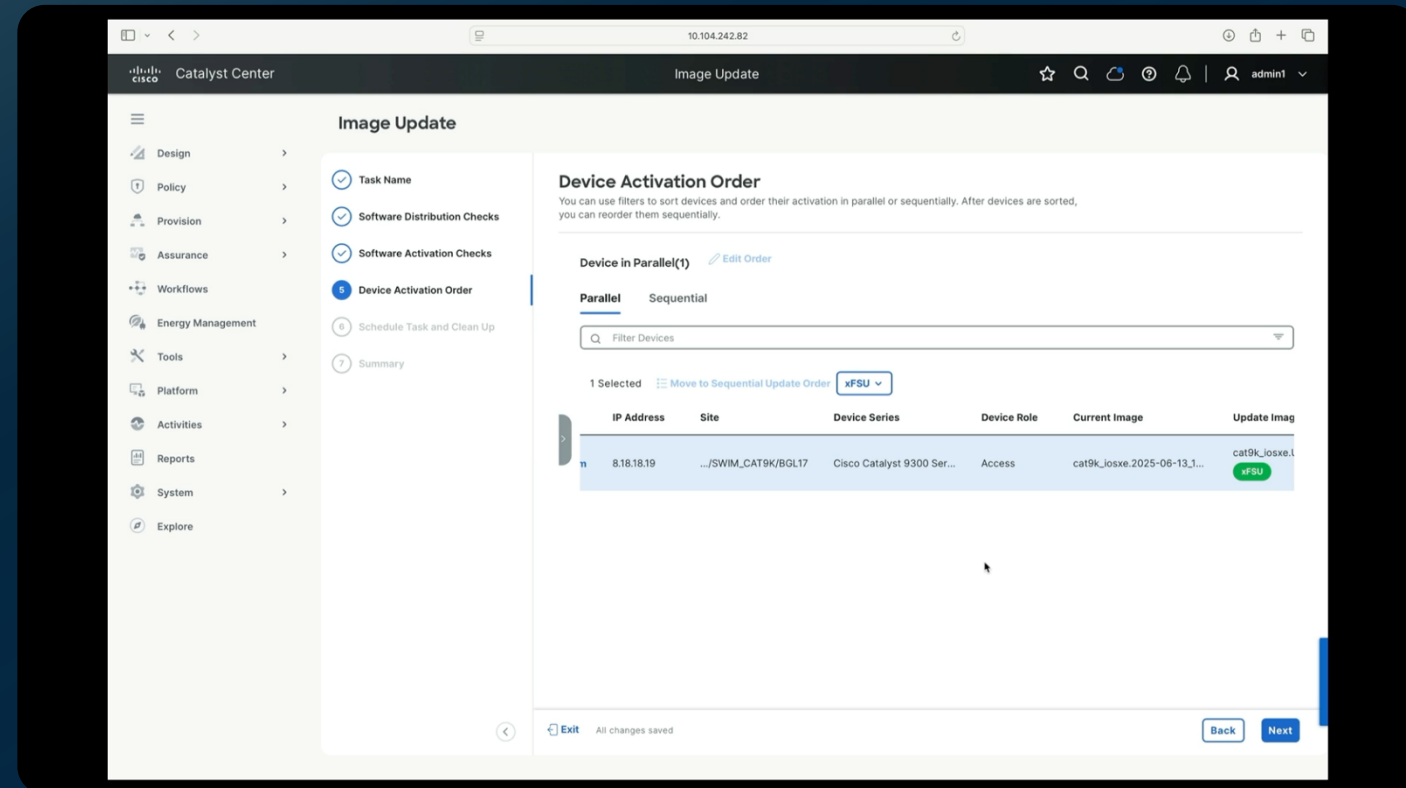
Minimize downtime during software reloads and upgrades

with Extended Fast Software Upgrade (xFSU)

Complements In-Service Software Upgrades (ISSU) (C9400, C9500, C9600) for C9300 switch family & Cisco C9350 Smart Switches

Sub-second traffic downtime (IOS XE 26.1*)

No topology modification needed (Supported across L2 & L3)



*<1 sec for C9350, <5 sec for C9300

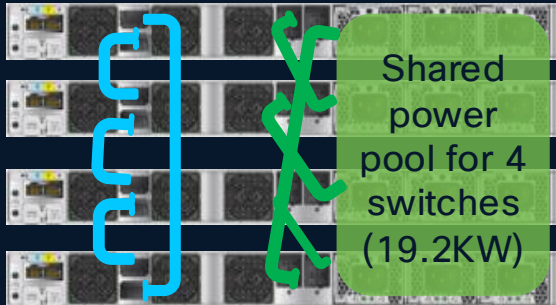
Catalyst Center support coming in Release: 3.2.1

A Better Way to do Stacking

New architecture for the new networking demands

1

Enhanced StackPower
Higher power sharing



New cables handle higher current (**55A**)

30% more power sharing via StackPower ports

2

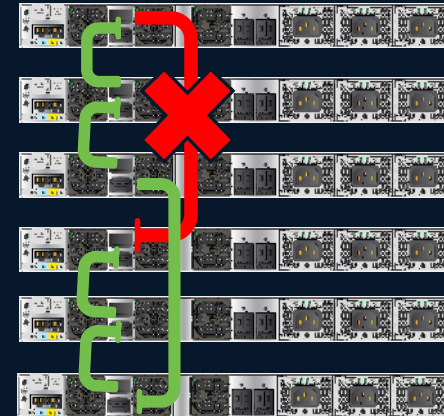
New stacking architecture
Open-standards based

SPF

Open shortest path algorithm.
Same code base as front-panel stacking.

3

Isolated bandwidth loss during failure

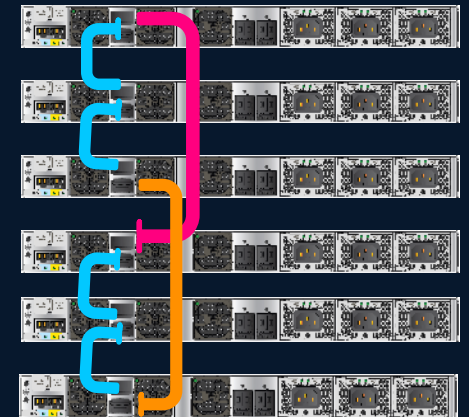


Failure only affects bandwidth for directly connected switches.

Other switches in the stack operate at full bandwidth

4

Flexible user-friendly stacking design



No restrictions on how or where you connect to form a full ring.

Eliminate long cable requirement

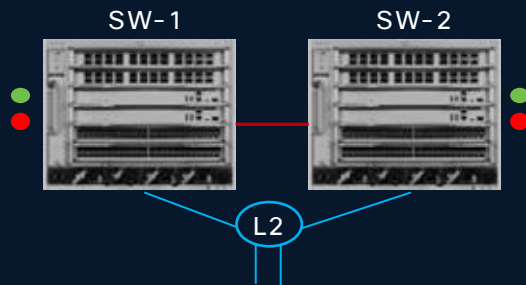
EVPN Multihoming: Building Resilient, High-Performance Networks

Standard-based, flexible, and non-stop connectivity for modern multi-chassis designs



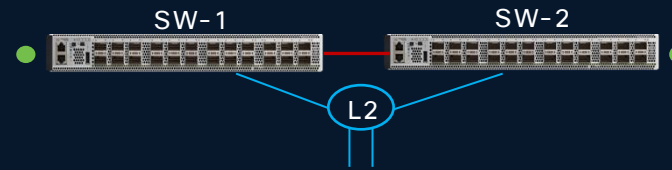
Catalyst 9600 | 9400

Modular - HA | Non-HA



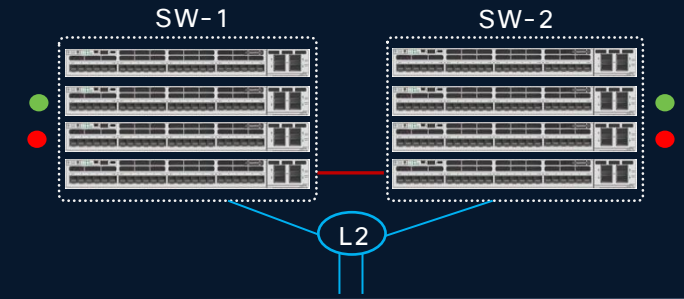
Catalyst 9500 | 9300

Fixed - Non-Stacking



Catalyst 9300

Fixed - StackWise



● Active
● Hot-Standby



Standard-Based

Standard-based L2 Multipath
Follows RFC 7432 | 8365
Proven BGP control-plane



Flexible

Non-Fabric | Fabric Network
Least-disruptive integration
Elastic network placement



Distributed

Fully Distributed Planes
Advanced synchronization
Independent Upgrades



Performance

Non-blocking architecture
All-Active Ports | VLANs
Increase 2X Performance



Resilient

Near Hitless Upgrades
Non-Stop communication
Deterministic Availability

Intelligent Power Orchestration

Energy-Aware Infrastructure: Reducing OPEX for
Sustainable Operations

Huge OPEX Savings

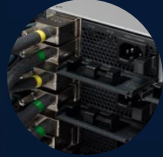
with Smart Power Framework



Port SFPs



Port LEDs



Stackpower

Power optimization with components auto-off



Hibernate

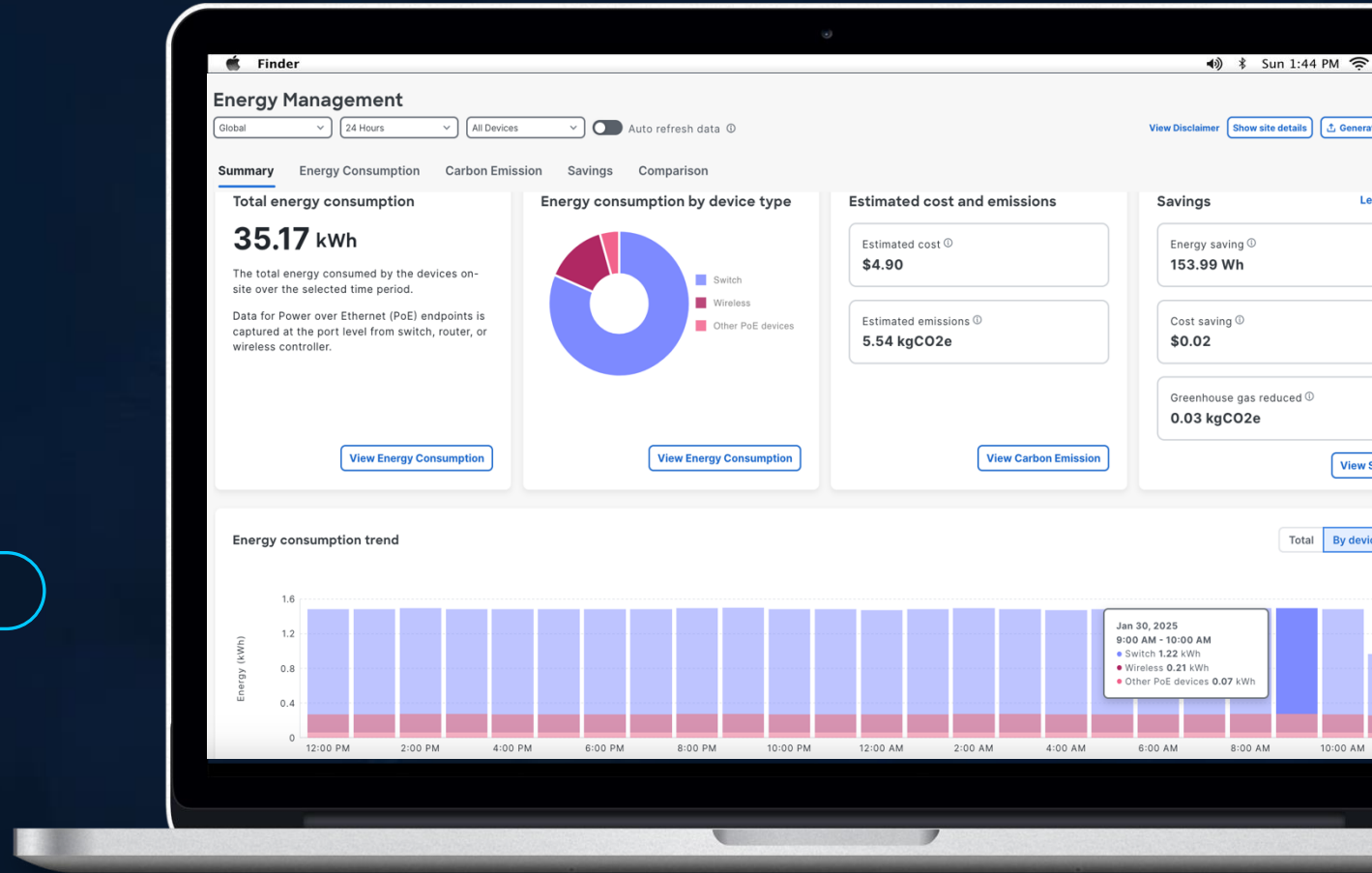


Scheduled Controls



Wake on LAN

Power policies for power optimization



Energy Management Dashboard

The Resilient, Intelligent Edge Cisco's new family of Smart Switches

Operational Simplicity

Automated, comprehensive, monitored, and orchestrated from the cloud or on prem

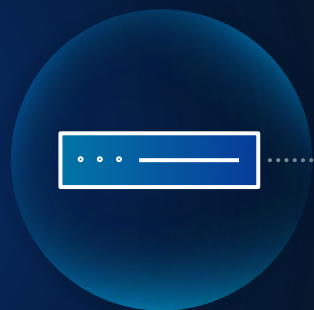
Scalable devices

High performance, power efficient, low latency, high bandwidth, high density, highly resilient

Security fused into the network

Comprehensive security with granular controls across all layers. Post Quantum Cryptography and Hybrid Mesh Firewall-compatible

Comprehensive security fused into every layer



The device
Secured

The network
Secured

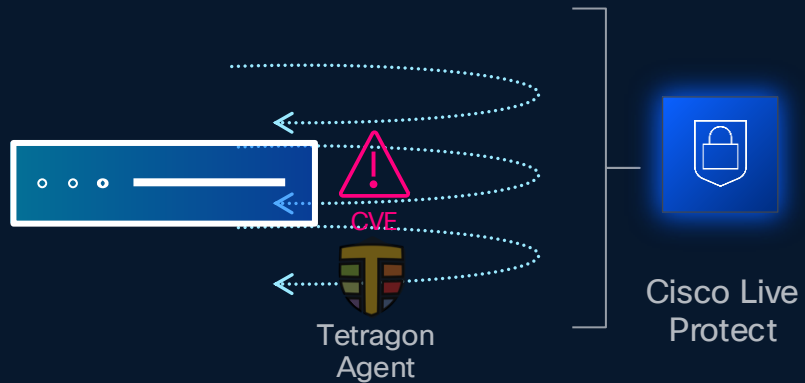
Users, endpoints and apps
Secured

Securing against vulnerabilities

Live Protect shields mitigate vulnerabilities without reload and on your schedule

Live Protect

Updates via Catalyst Center, Meraki Dashboard, or CLI



Modes of Enforcement

Observing

Detect and report on potential compromises

Protecting

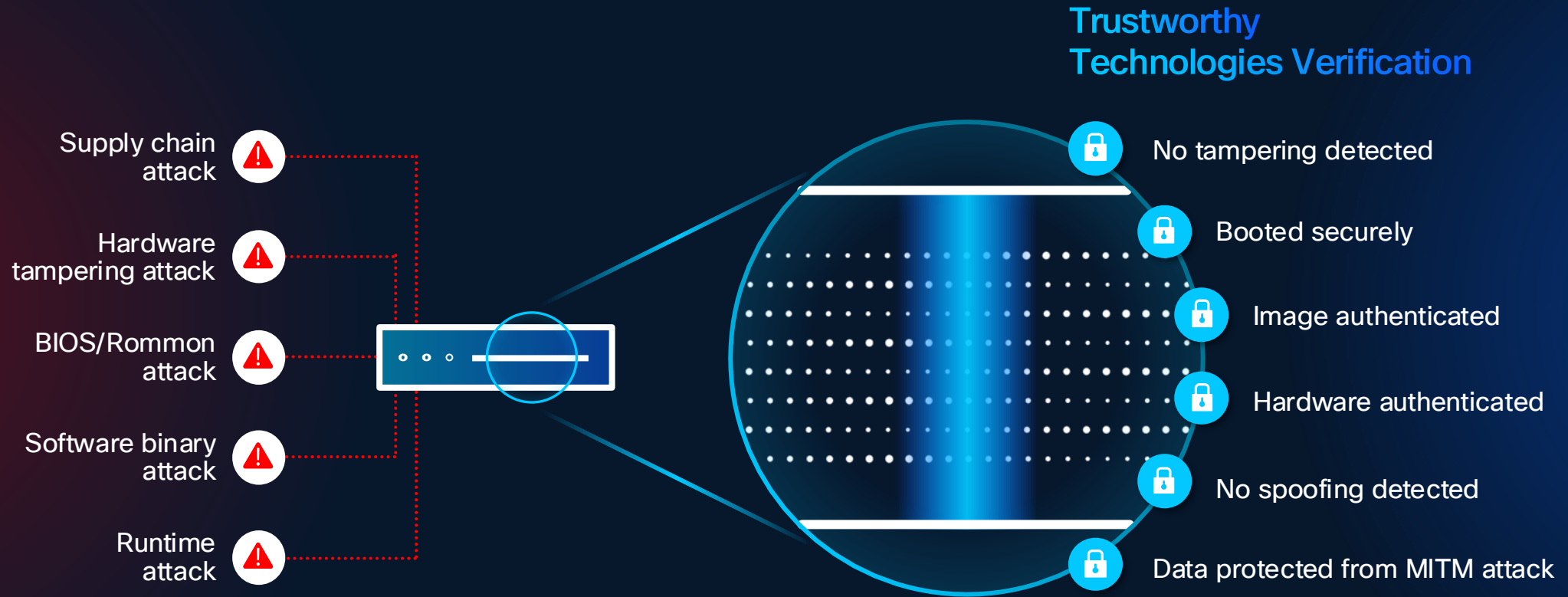
Block and report on potential compromises

The screenshot displays the Cisco Live Protect dashboard. At the top, there are summary statistics for Advisories (8 Critical, 64 High), Device Advisories (8 Software Version, 0 Custom, 0 Advanced), Available Shields (32 Advisories), and Device Shields (14 Monitoring, 26 Enforcing). A 'Re-Scan Network' button is visible. Below this, the 'Devices' section is filtered by 'Enforcing' and shows 59 devices. A table lists the devices with columns for Tags, Device Name, IP Address, Advisories, and Live Protect Shields (Available, Monitoring, Enforcing, Not Available, Events).

Tags	Device Name	IP Address	Advisories	Available	Monitoring	Enforcing	Not Available	Events	Platform
	SJC12-Access	10.4.15.5	3	0	1	2	1	2	Switch
	SJC14-F1-9350-2	10.4.0.24	3	1	0	1	0	2	Switch
	SJC14-F1-9350-3	10.14.78.67	3	1	0	1	0	2	Switch
	9350-live.staging	10.14.78.180	3	1	0	1	0	2	Switch
	SPJD-03	10.14.78.80	3	2	0	1	0	2	Switch
	SPJD-04	10.14.78.69	3	1	0	1	0	2	Switch
	SJC12-Core	10.4.40.254	3	1	0	1	0	2	Switch
	SJC12-9350	10.4.174.10	3	1	0	1	0	2	Switch
	SJC12-Distribution	10.4.40.252	3	1	0	1	0	2	Switch
	SJC14-F1-9350-3	10.14.78.62	3	1	0	1	0	2	Switch
	SJC14-157C-9350-1	10.14.78.81	1	0	0	1	0	2	Switch
	SJC14-F1-9350-4	10.14.78.79	1	0	0	1	0	2	Switch

Securing the switch

Secure from hardware to software, from boot time to runtime



Cisco Post Quantum Cryptography Initiatives

Cisco Smart Switches are Quantum-Resistant

Attack

Protect
w Cisco Trustworthy Solutions

PQC Initiatives

Compromised Software

Image Signing

The Open IOS XE is authentic & unmodified

ML-DSA image signing to enable verification of IOS-XE

2H CY26

Compromised Boot Code

Secure Boot

The boot-code is authentic & unmodified

LMS signing and verification capability on bootloader/ROMMON

2H CY26

Harvest Now, Decrypt Later

Quantum-resistant key exchange/data encryption

Data is authentic & unmodified

AES-GCM-256 for MACsec

1H CY26

AES-GCM-256 for IPsec

2H CY26

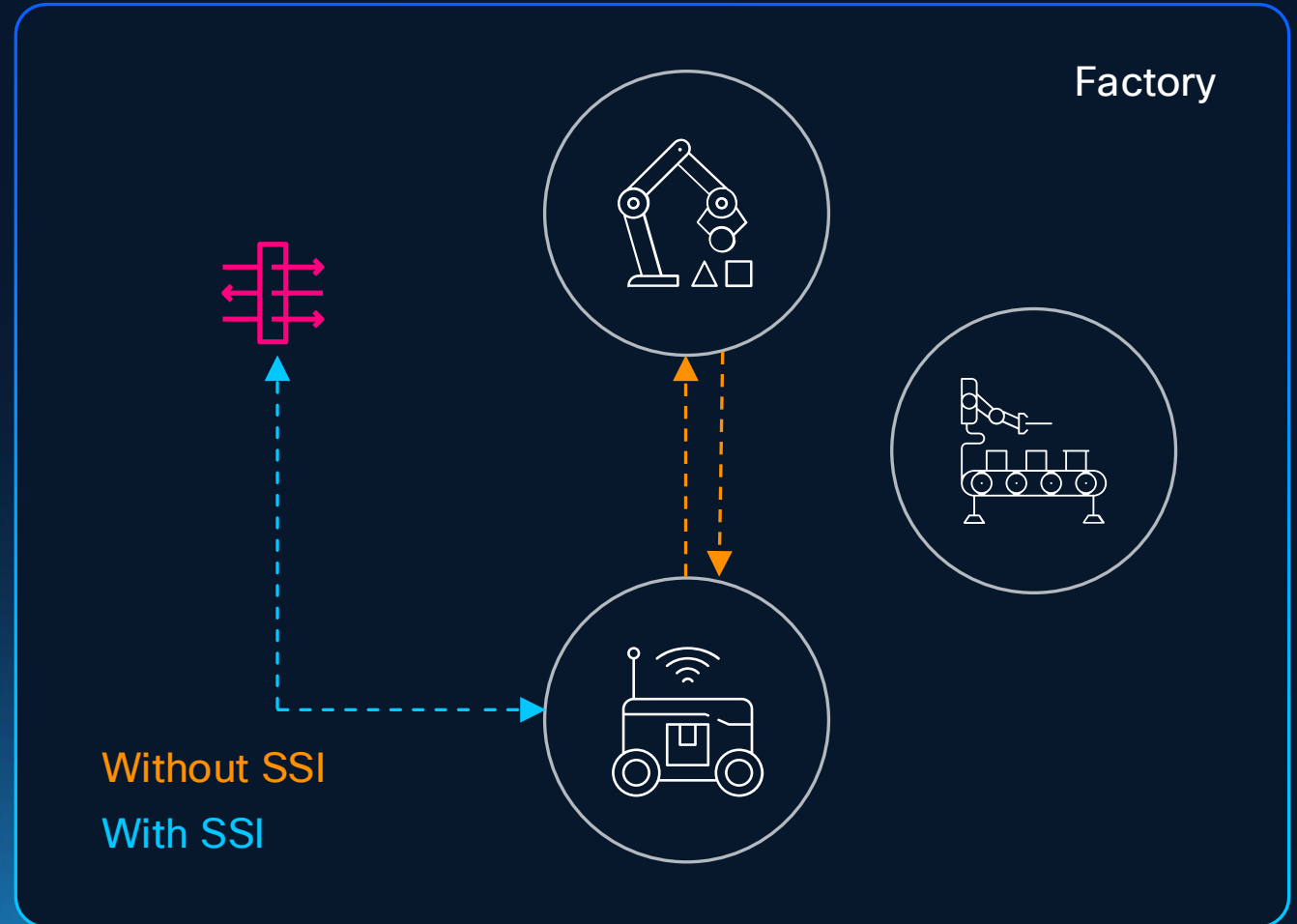
IKEv2 with ML-KEM for IPsec

2H CY26

Firewalling for any network flow, at scale

GA Mar 2026

- Logically insert Firewalling in any traffic flow
- Bring east-west traffic between micro-segments to existing Security infra, at scale
- Stateful steering for operational simplicity (manage the return flow automatically)
- Vendor agnostic, works with any firewall
- If using Cisco Firewall, can enforce policies directly by micro-segment (SGT-based)



Thank you



