

Agentic AI with Splunk Foundation Models and MCP Server

Chris Irwin

Splunk Observability Solutions Architect

Mike Duarte

Cisco AI Solutions Engineer



Agenda

1. **AI embedded in Splunk: from analytics to agentic operations**
2. **Observing AI systems and AI-powered applications**
3. **AI Canvas: generative AI for IT operations and decision-making**
4. **Connecting the AI dots with MCP**

AI In Splunk

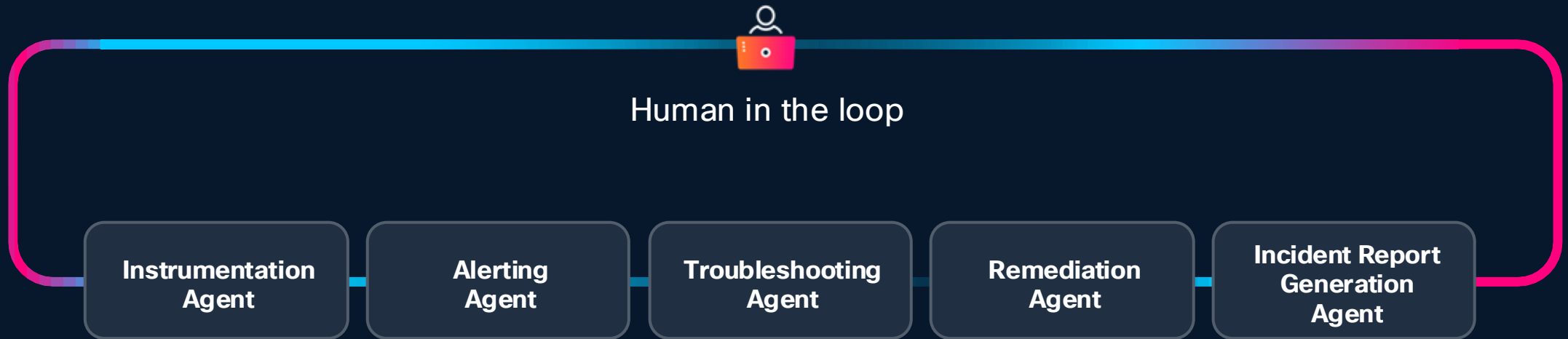
Modern Observability must evolve

Fix and prevent
with AI agents

Observe AI agents
and infrastructure

GenUI for human and
agent workflows

Fix and prevent with AI agents



Demo – AI Assistant and Troubleshooting

Observing the Artificial Intelligence Stack and Applications

AI applications have evolved

From simple and deterministic to complex and adaptive

Pre-AI Period

- Deterministic logic
- Predictable behavior
- Static query / response

Large Language Models (LLMs)

- Natural language input / output
- No workflows / ~1 span

Retrieval-Augmented Generation (RAG) with LLMs

- Hybrid and multi-cloud environments / Microservices
- Linear workflows / ~10s of spans

Agentic Applications

- Autonomous task completion
- Unpredictable behavior
- Multi-step actions

Past

Present

Future

Digital resilience is being tested with AI

New questions are being asked to find out if observability tools can keep up



Is my AI application
working as expected?



Is my infrastructure
or component
healthy?

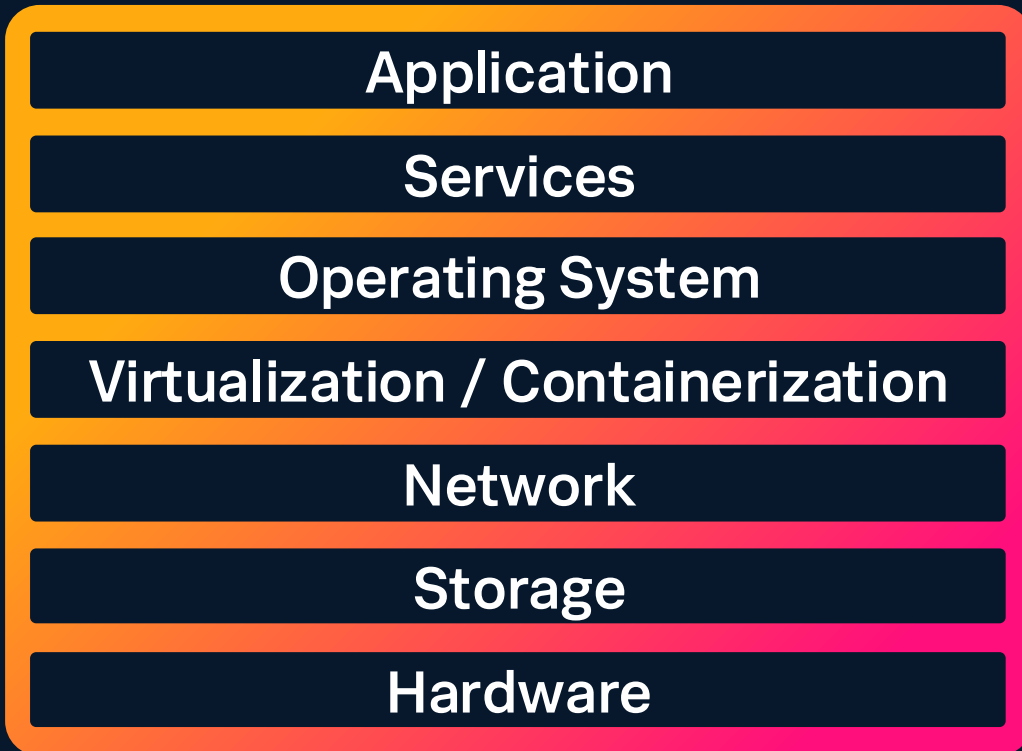


Is my model trusted
and operating
effectively?

This is because traditional infrastructure has transformed

More layers and complexity is required

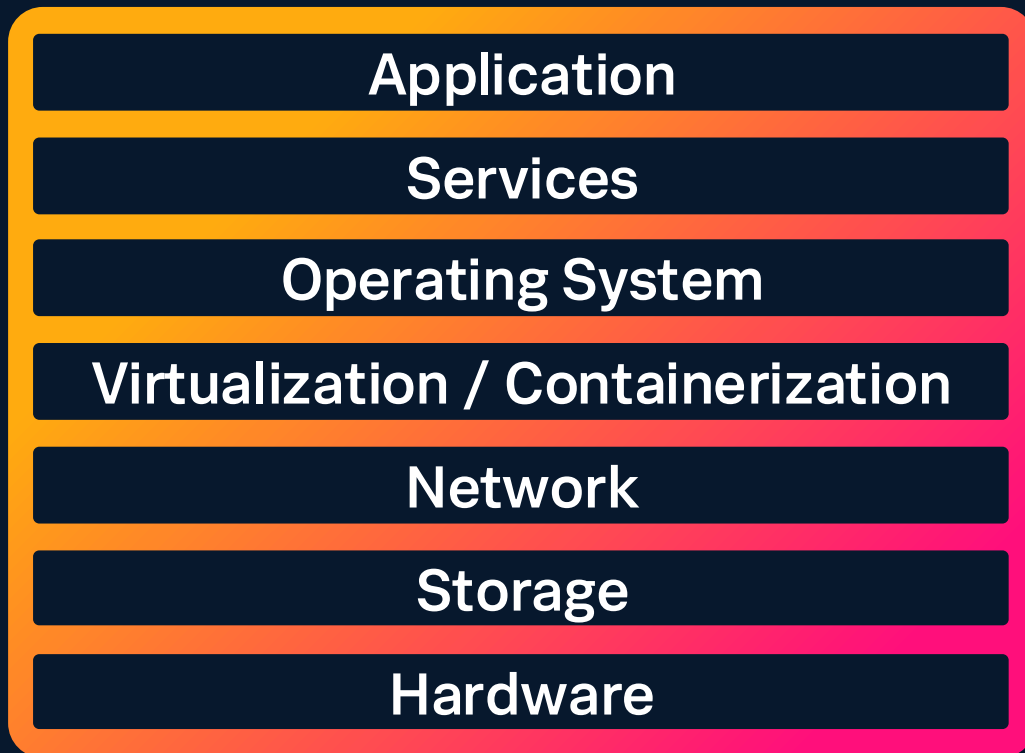
Traditional Infrastructure Monitoring



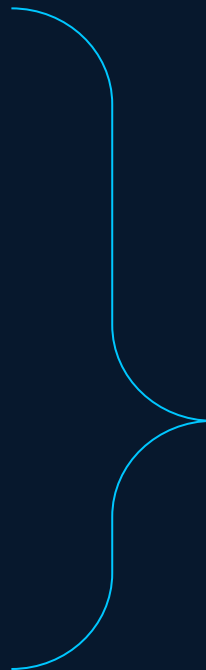
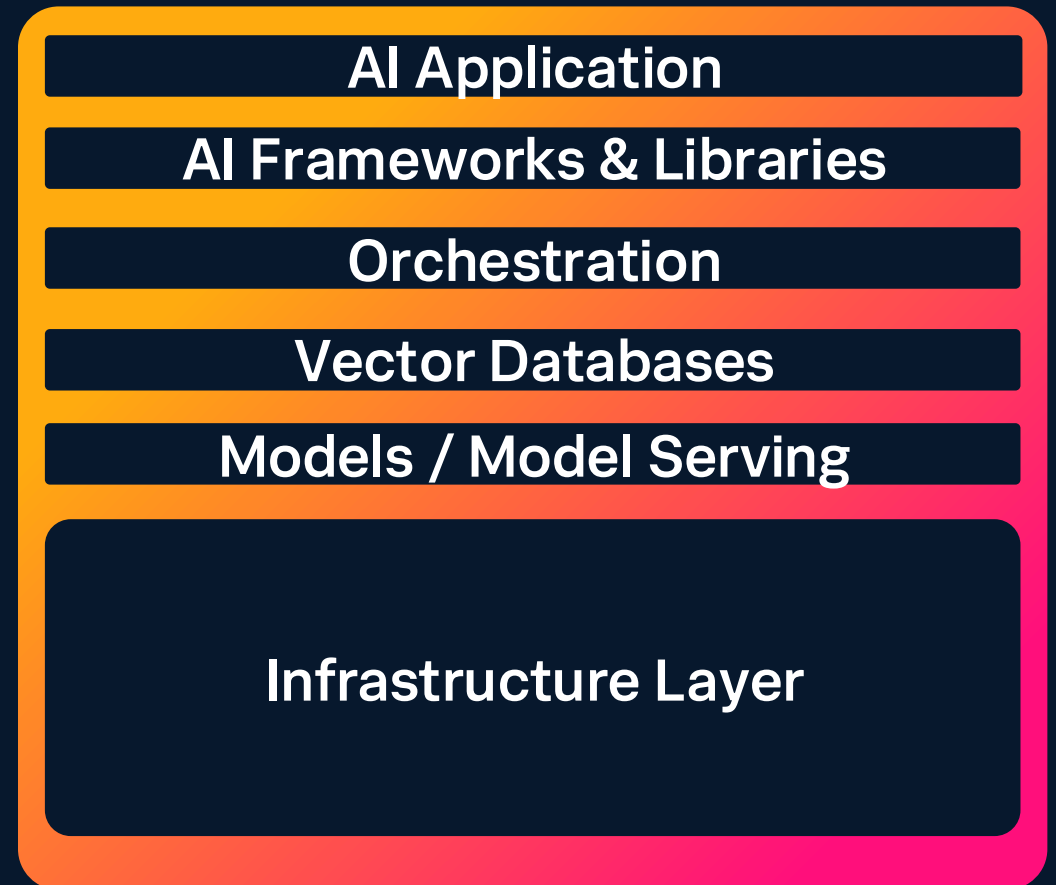
Teams Need to Modernize Observability Capabilities

To manage AI workloads and resource utilization

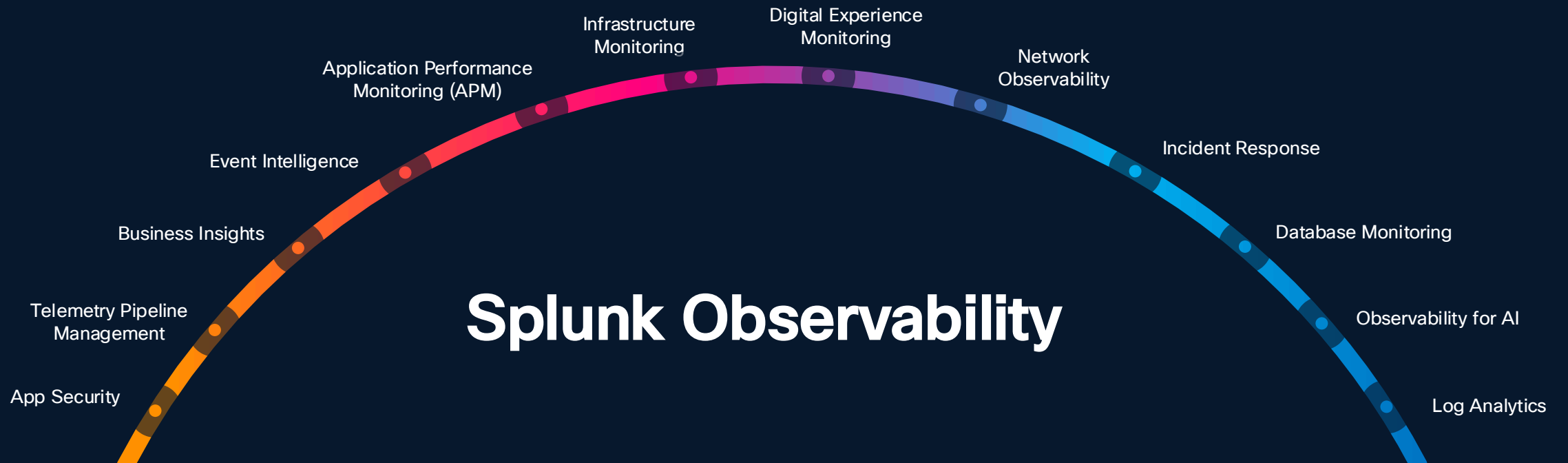
Traditional Infrastructure Monitoring



AI Infrastructure Monitoring



Splunk Observability



Splunk Platform

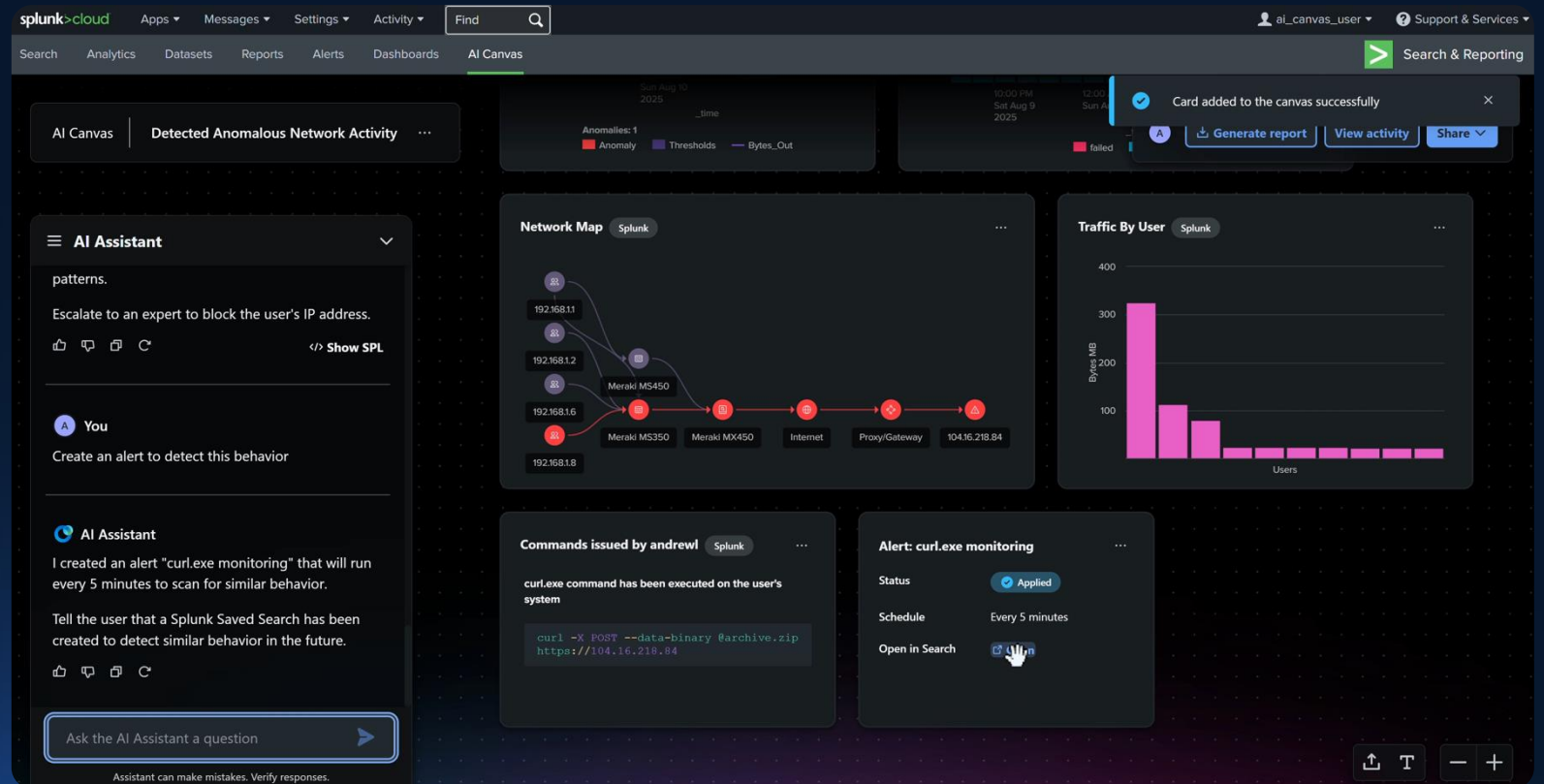
Demo – Observing AI with Splunk

Introducing **AgenticOps**

Cross-domain | Multiplayer | Purpose-built model

Reimagined UI for human/agent interaction with AI Canvas

- Collaboration across multiple users (App/Dev, NetOps, SecOps and execs)
- Built on the foundation of the Deep Network Model
- Troubleshooting and execution across multiple domains



Demo – AI Canvas

Why MCP Matters

Model Context Protocol — The Universal Connector for AI

THE CHALLENGE

Every AI model today requires custom integrations for each data source, tool, and enterprise system, creating M×N complexity that doesn't scale.

THE MCP ANSWER

A single open protocol that standardizes how AI models connect to any data source or tool, turning M×N into M+N.



Universal Interoperability

One protocol connects any LLM to any enterprise tool, API, or data source — no custom adapters.



Composable Architecture

Modular MCP servers snap together, enabling multi-agent workflows across heterogeneous stacks.



Security & Governance

Centralized auth, audit, and policy enforcement at the protocol layer — enterprise-grade by design.



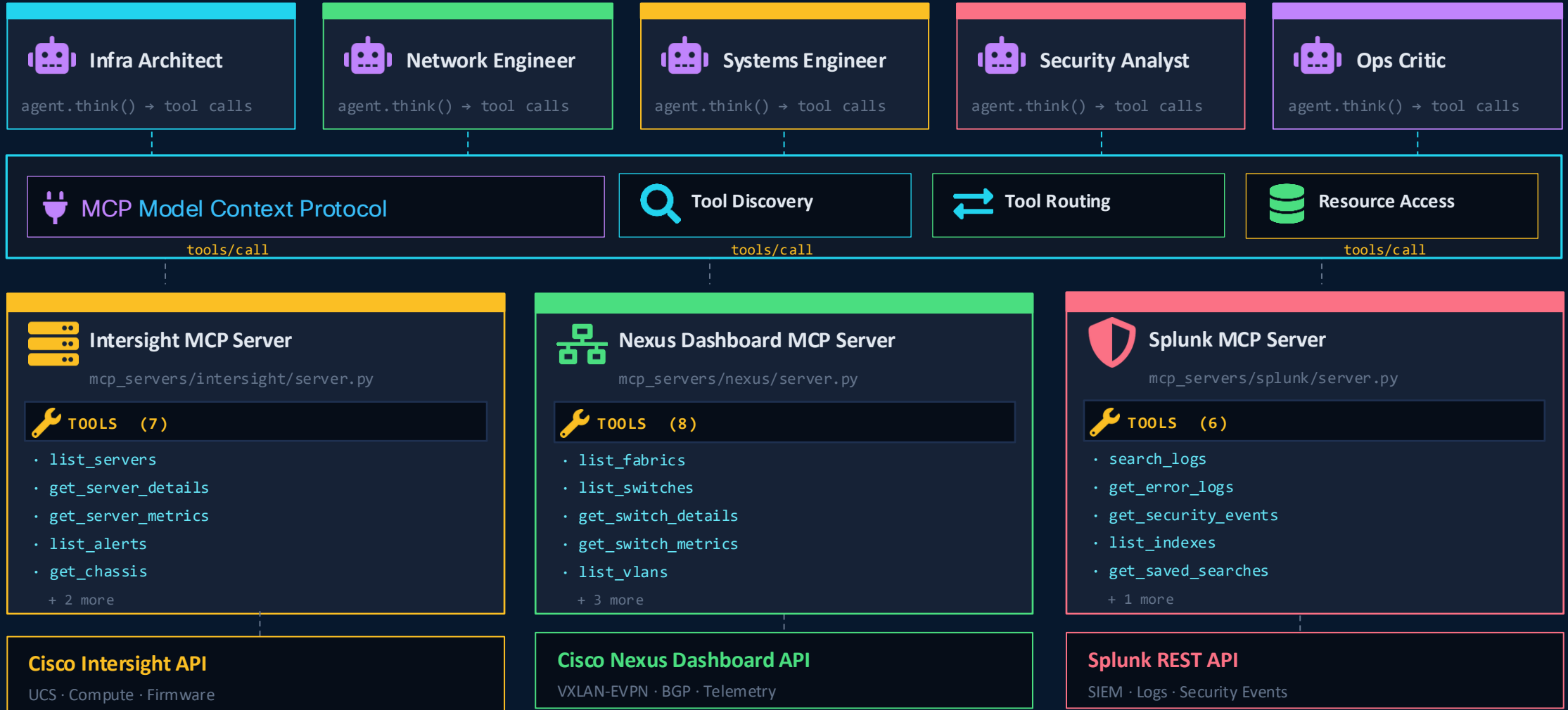
Accelerated Deployment

Pre-built connectors slash integration time from weeks to hours, reducing TCO for AI initiatives.

MCP Architecture

How Model Context Protocol connects agents, tools, resources, and platforms

AGENTS



Demo – MCP

Thank you



