

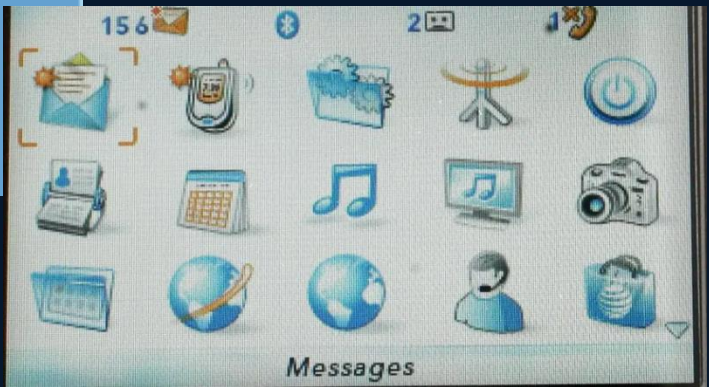
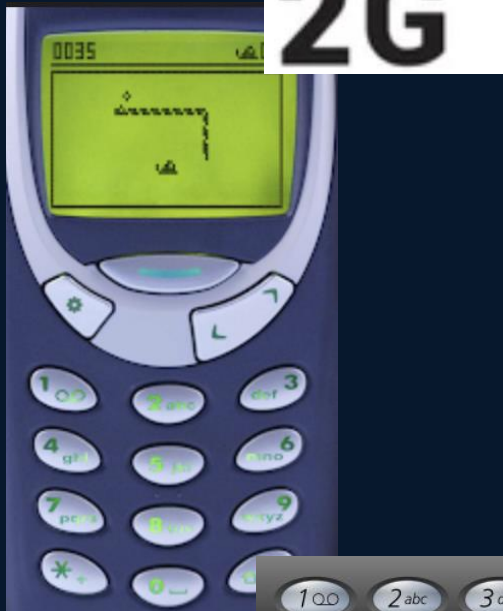
Unified Campus Experience:

Manage your Catalyst infrastructure in the cloud,
harnessing AI and automated workflows

Dylan Thompson
Cisco Solutions Engineer



2G



pguliz
The a
RSA ke
This
Are y
Warni
(petr
(petr

R1>en
Passw
R1#sh
Conne
6
7
7
%No S
R1#

Switches

View old version

MS_TOR_9300 [1]

Online

Configuration source: Device

C9300-24U 34:f8:e7:f0:02:00

Summary

Ports

Cloud CLI

Device Health

Event log

Location

Address

500 Terry A Francois Blvd, San Francisco CA

Serial number

FCW2239C1HR

Q5TC-BZDP-VV4L (Cloud ID)

Device uptime

162d 15h 53m

Last device boot Jun 28 19:39:08 (PDT)

Last boot reason [View in Event log](#)

Firmware

IOS XE 17.15.1

LAN IPv4

172.16.1.2

Type

Statically assigned

Interface

Vlan 2

Public IP

192.195.83.205

CLI terminal

Close terminal

Detach terminal

Welcome to the interactive CLI IOS XE terminal

You are in Read-only Mode

Establishing connection to your device. Please wait...

Connection established successfully

MS_TOR_9300>

Session History

Start time...	Complete time (UTC)	User	Session type	Session log
Dec 4, 2025 16:04:22	Dec 4, 2025 16:04:31	MerakiSupport_wru3Rd	Read-only	Download
Dec 4, 2025 16:02:54	Dec 4, 2025 16:04:18	MerakiSupport_wru3Rd	Read-only	Download
Nov 19, 2025	Nov 19, 2025	MerakiSupport_cnVRjb	Read-only	Download

AI Assistant

Meet your AI Assistant

We keep your data safe and secure

Learn how personal data is processed when using the AI Assistant in our [AI Assistant disclosures](#). Remember to always use the AI Assistant in accordance with your company's AI use policies.

Network Overview

Troubleshooting

Client & device insights

Policies & Configuration

Ask the AI Assistant a question

Assistant can make mistakes. Verify results.

Help Center

back0, cha

.1.100 sta

to adminis

o up

.1.100 sta

to adminis

back0, cha

o up

back0, cha

.1.100 sta

y console

o down

to adminis

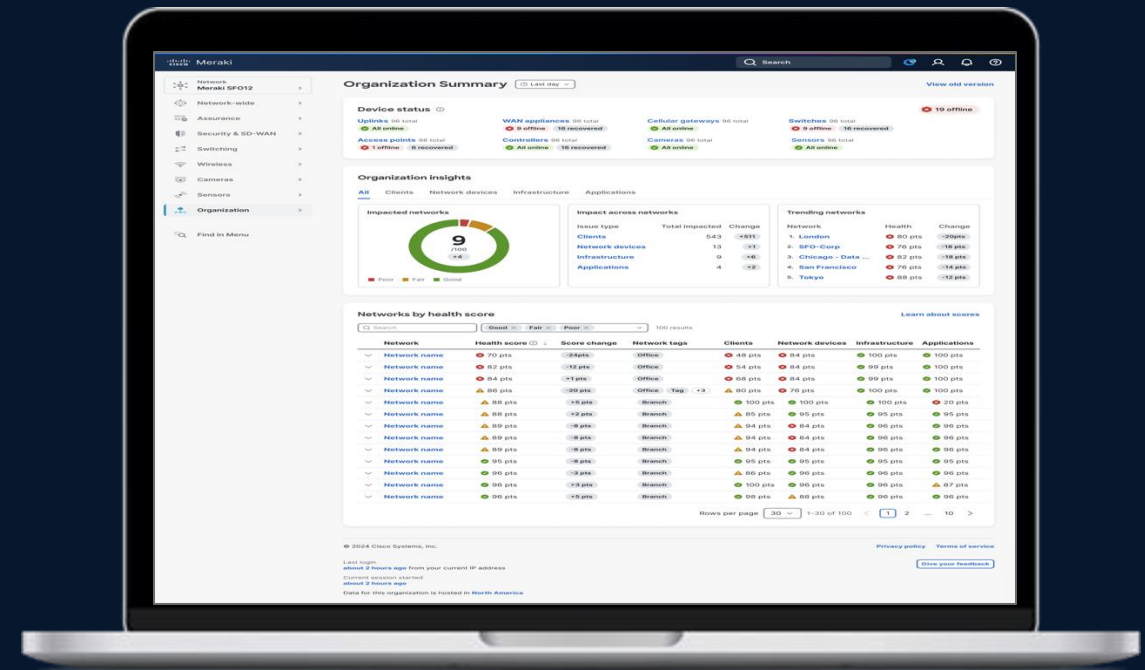
© 2025 Cisco and/or its affiliates. All rights reserved.

CISCO

Cisco Networking Cloud

94% of customers save time from a single, easy-to-use dashboard

Platform Turbocharged with fully integrated AI/ML offered by the largest Cloud SaaS Networking Provider



Access

- Wi-Fi
- Switching
- Mobile Device Management

Edge

- Security and SD-WAN
- Cellular gateways
- ThousandEyes

IoT

- Smart cameras
- Sensors
- IIoT

Cisco Security

- Cisco Secure Access SASE
- Cisco Secure Endpoint, IPS/IDS, Talos Content Filter, XDR
- Access Manager, Cisco ISE - NAC
- Cisco Secure Client

APIs and Ecosystem

- Open Standard APIs
- Cisco Spaces
- Cisco Marketplace

Trusted Everywhere

5M+

Customer
networks

15.8M+

Meraki devices
online

190+

Countries
in network

12B+

External API
monthly calls

708M+

Daily end-user
devices

250M+

Daily splash
pages served



835K+
Customers



99.99%
Cloud SLA

100K+

Active devices for 5+ customers, each

285K+

Access points deployed for a single customer

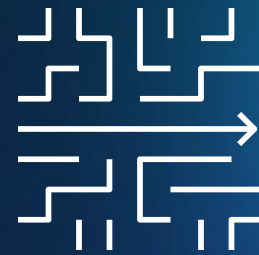
75%

Fortune 500
companies are Meraki
customers

97% retention

Realize continuous
value from the
Meraki® platform

Operational simplicity
powered by AI



Deep Network Model

The most advanced networking LLM

Purpose-Built for Networking

Up to 20% more precise reasoning for troubleshooting, configuration, and automation.

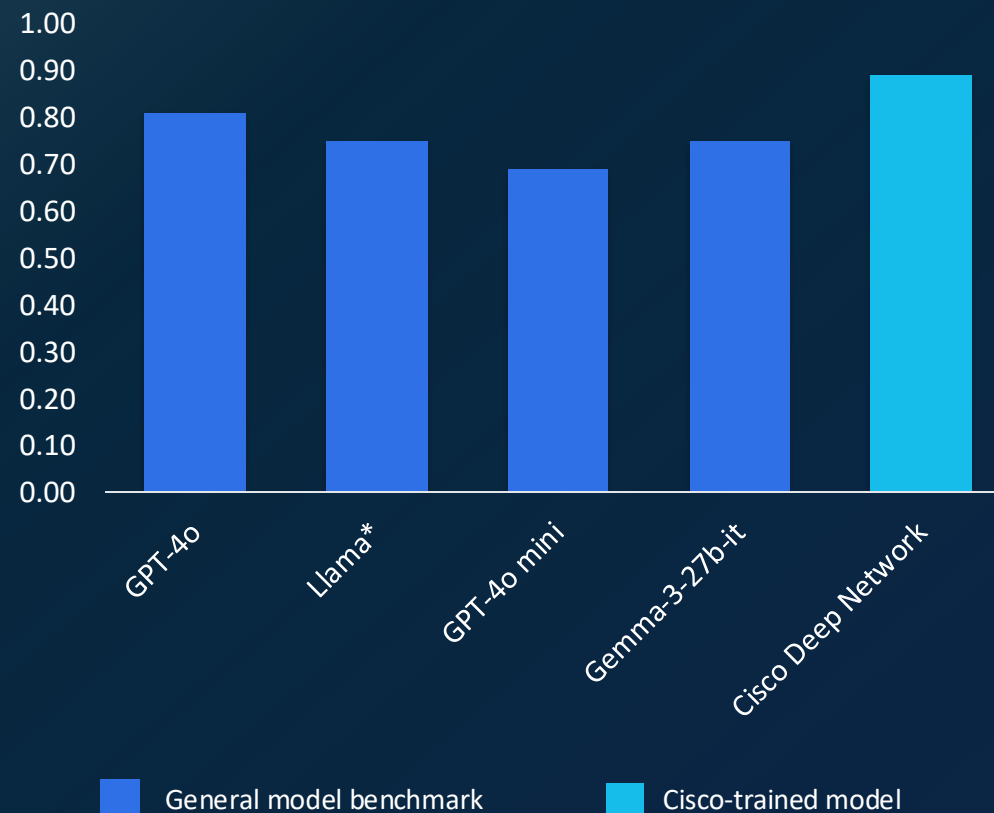
Trusted Training

Fine-tuned on 40+ years of Cisco expertise and expert-vetted for accuracy.

Continuous Learning

Evolves with live telemetry and real-world Cisco TAC and CX insights.

Outperforms general models by ~20%

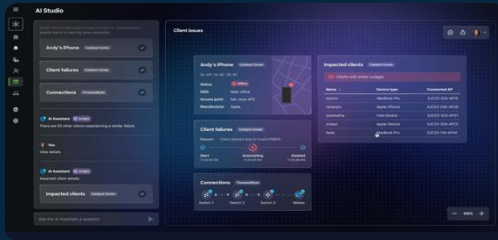


Accuracy on CCIE-style MCQs (590-question benchmark, May 2025)
*3.2-90B-Vision-instruct

AgenticOps

The New Standard for IT Operations

ALPHA | OCTOBER



AI Canvas

Cross-domain collaborative troubleshooting

CONTROLLED RELEASE | OCTOBER



cisco
AI Assistant

AI Assistant

Accelerate network operations

POWERED BY DEEP NETWORK MODEL

Cut MTTR to near seconds
with AI-driven root cause and
resolution.

Catch critical issues early
with AI that sees across the
stack.

Operate at scale with lean
teams and built-in AI
expertise.

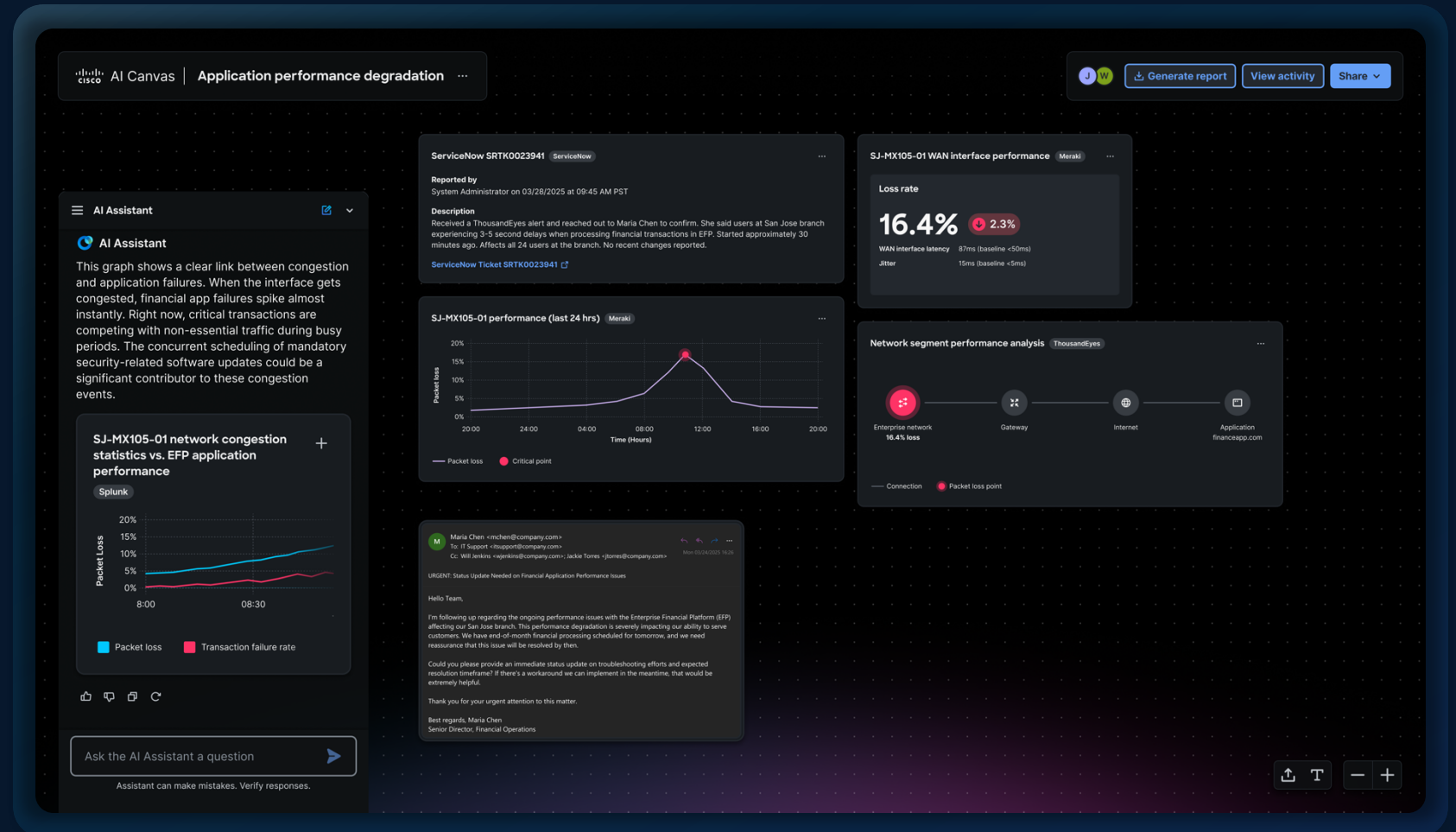
Troubleshoot faster
together with shared
context across teams.

AI Canvas

Troubleshooting and execution across multiple domains

Collaboration across multiple users (NetOps, SecOps and execs)

Built on the foundation of the Deep Network Model





AI Canvas

Troubleshoot a Ticket



Generate report



View activity



Share



AI Assistant



AI Assistant

ServiceNow

SRTK0023941

ServiceNow



ServiceNow Ticket Details:

Reported by: System Administrator on
March 28, 2025 09:45 AM PST

Issue: Application performance degradation
at Online Boutique - Chicago Branch

Description: Received a ThousandEyes
alert and reached out to Maria Chen to
confirm. She said users at branch
experiencing frequent transaction failures
and timeouts in EFP. Started approximately
30 minutes ago. Affects all 24 users at the
branch. No recent changes reported.

Affected Service: Online Boutique
Financial Service

URL: [https://online-boutique-us-
chicago.com/transactions](https://online-boutique-us-chicago.com/transactions)

Incident Type: Network Performance

Priority: P1

ID: 234945

Automated diagnostics: [Meraki
S... ..]

Ask the AI Assistant a question



Assistant can make mistakes. Verify responses.

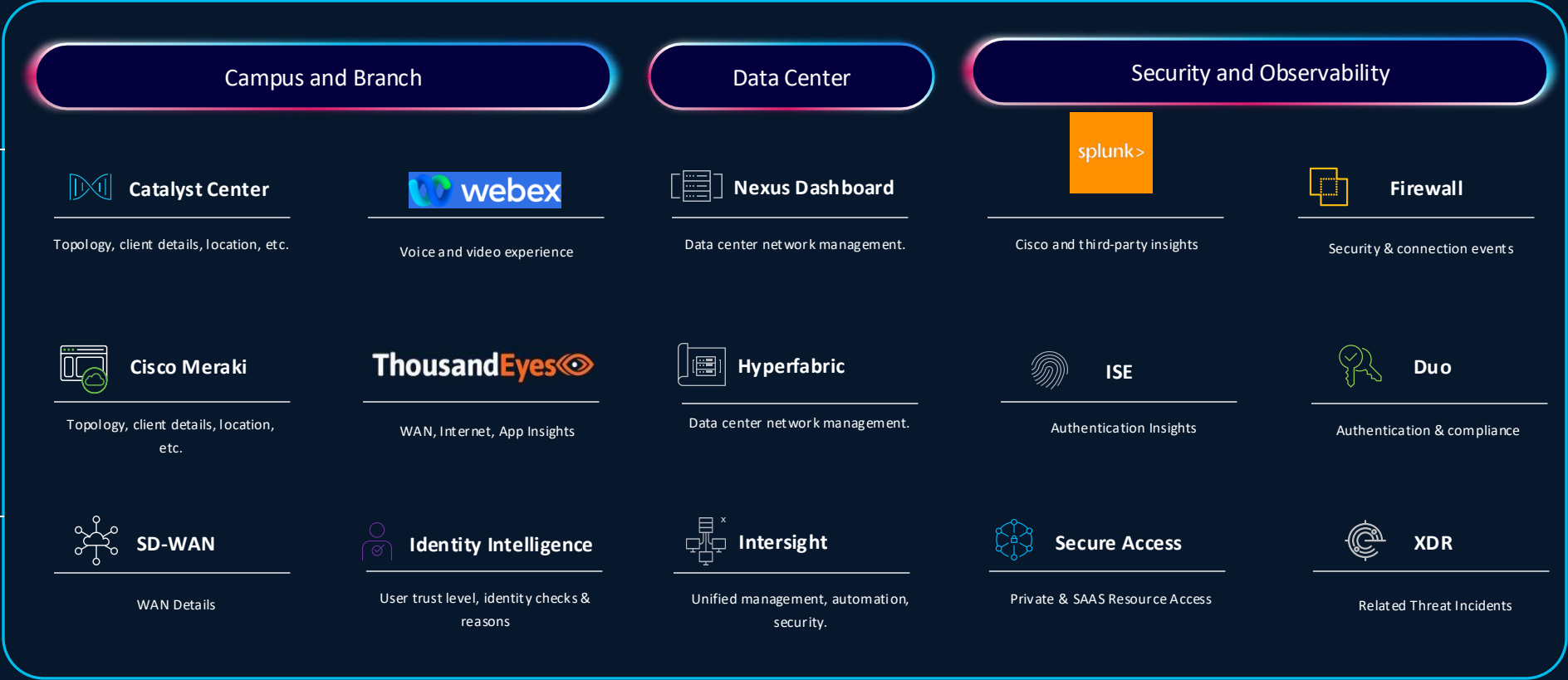
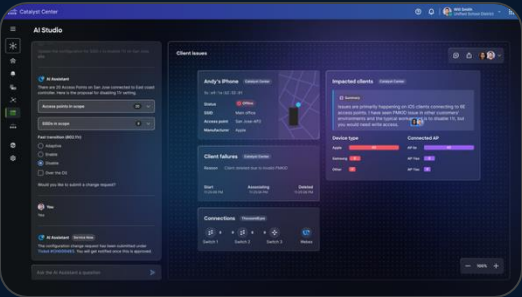


AgenticOps with cross-product skills and unified data

AI Assistant



AI Canvas

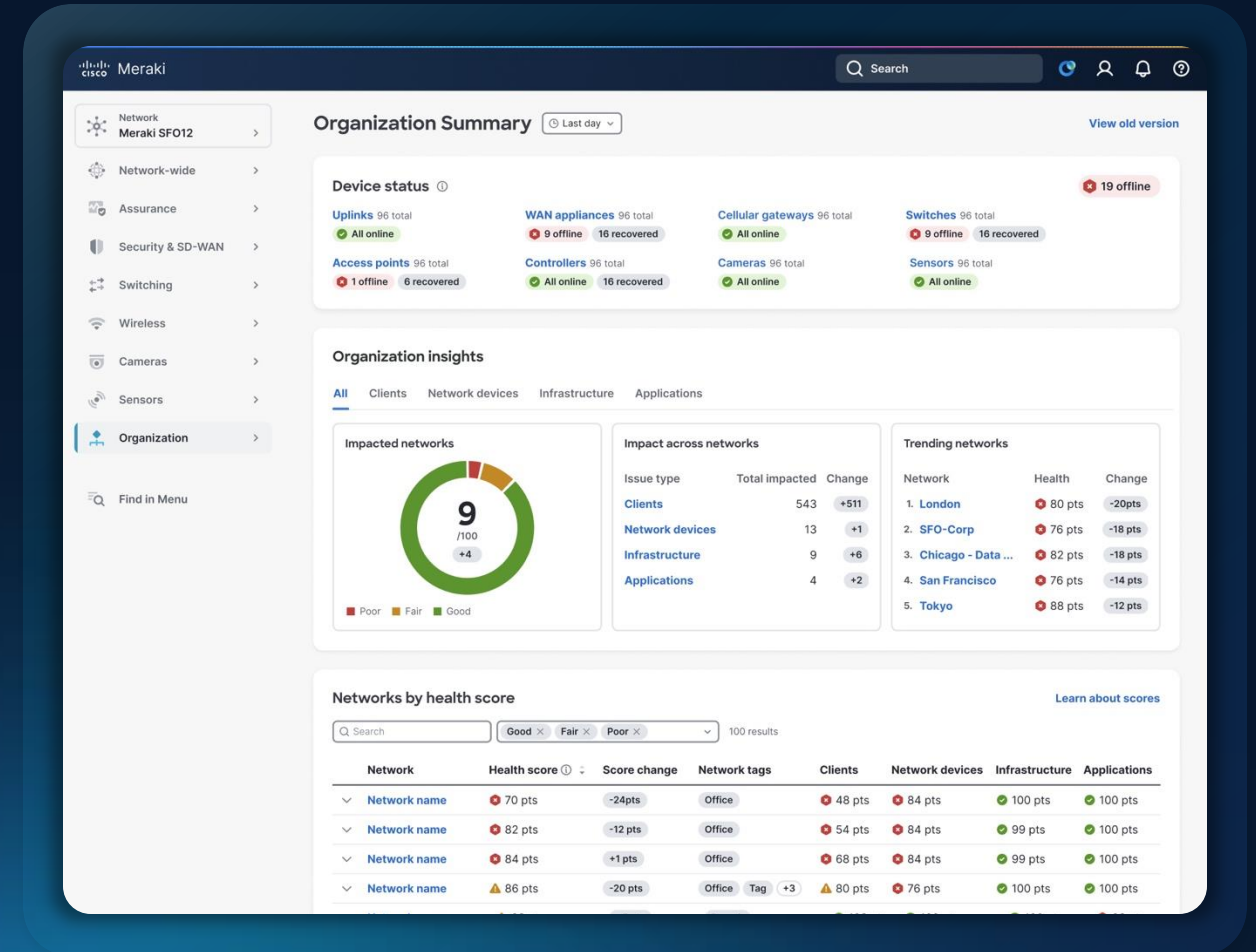


Unified Management – Catalyst and Meraki, any environment

Seamless control across cloud, on-prem, or hybrid

AI-powered automation and assurance

Granular access policy by user, device or application



Expanded cloud management for networking portfolio



Wireless

Full wireless support
Scale large campus wireless with
Campus Gateway



Switching

Expanded management for access and
core switching, including C9200 and
C9500



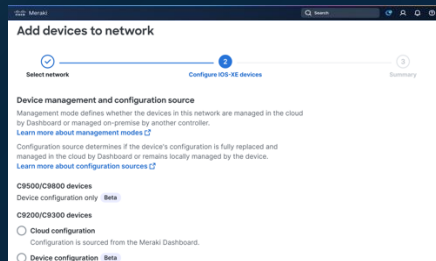
Routing

Next-gen routing
support coming

Cloud management powered by cloud-native IOS XE

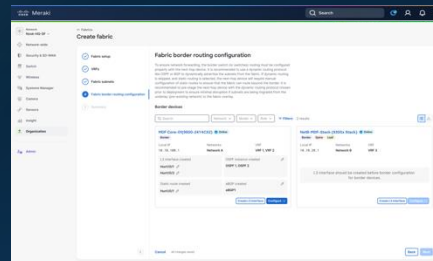
Large campus cloud capabilities

Powerful Switching Capabilities



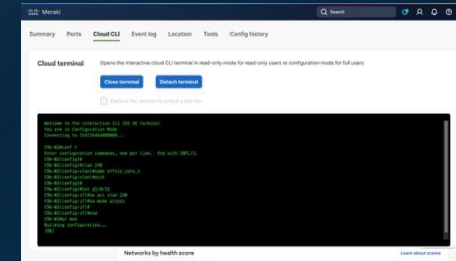
Support campus deployments with BGP, VRF, ISSU, and IOS XE stacking

Fabric for Secure Networking



Simplify NetOps with a secure fabric and micro/macro-segmentation

Cloud CLI for Flexibility



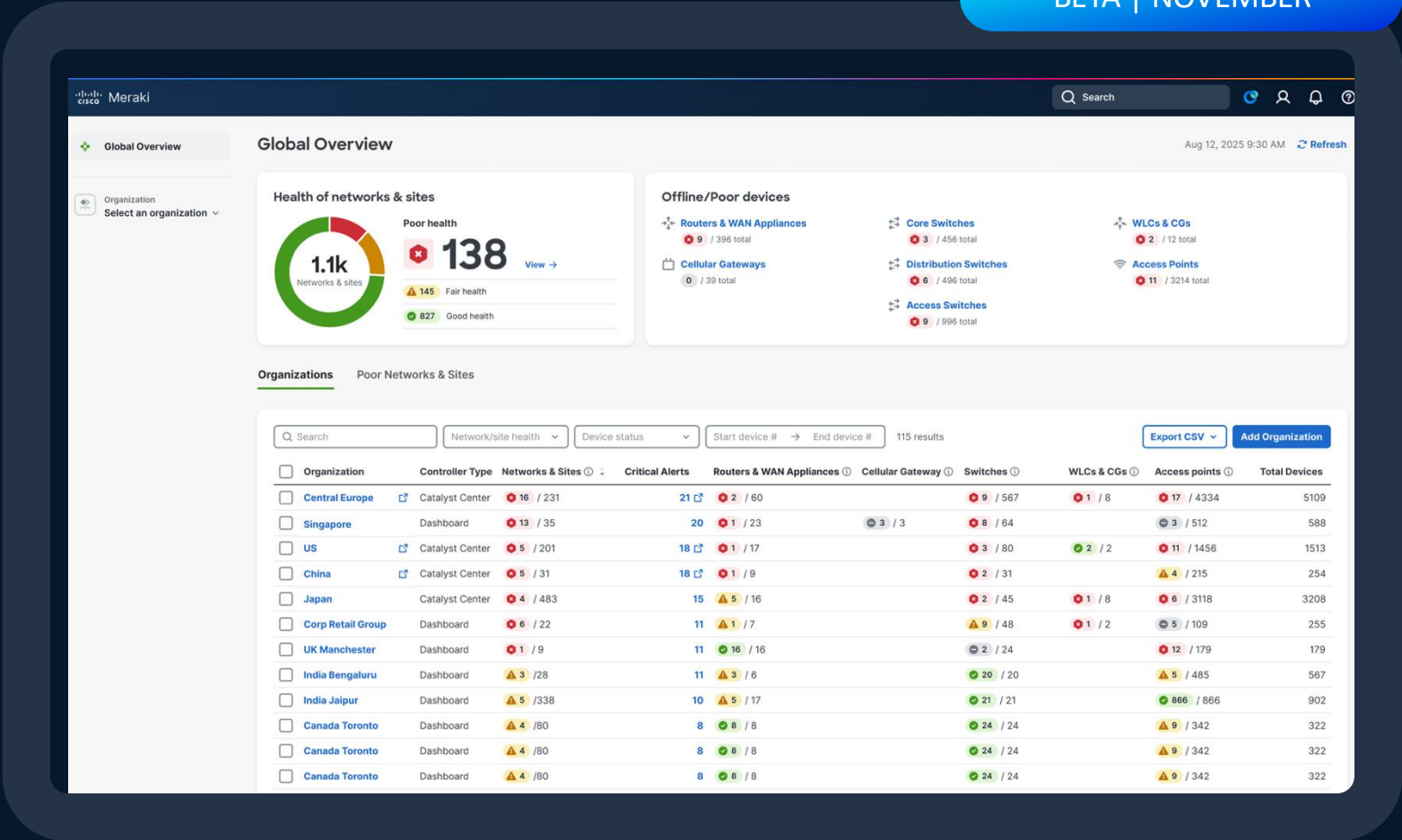
Simplify onboarding and flexibility with operating mode options and Cloud CLI

01 | Global Overview

One single view into Meraki and Catalyst Center

Troubleshoot seamlessly with global alerts and single-click access

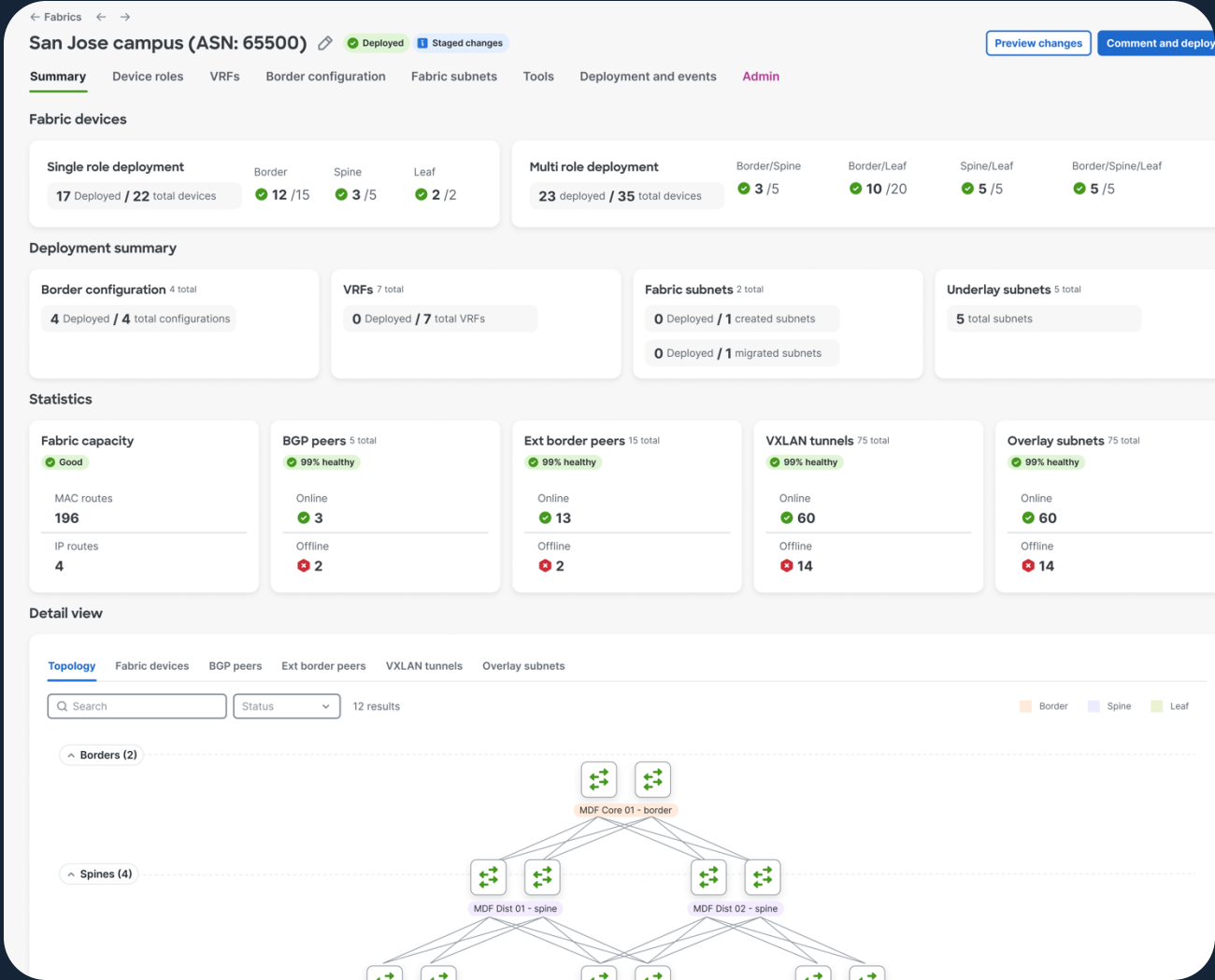
BETA | NOVEMBER



Scalable, Secure, and Sophisticated Segmentation

Fast, secure fabric orchestration to simplify large site management from the cloud

BETA | TODAY

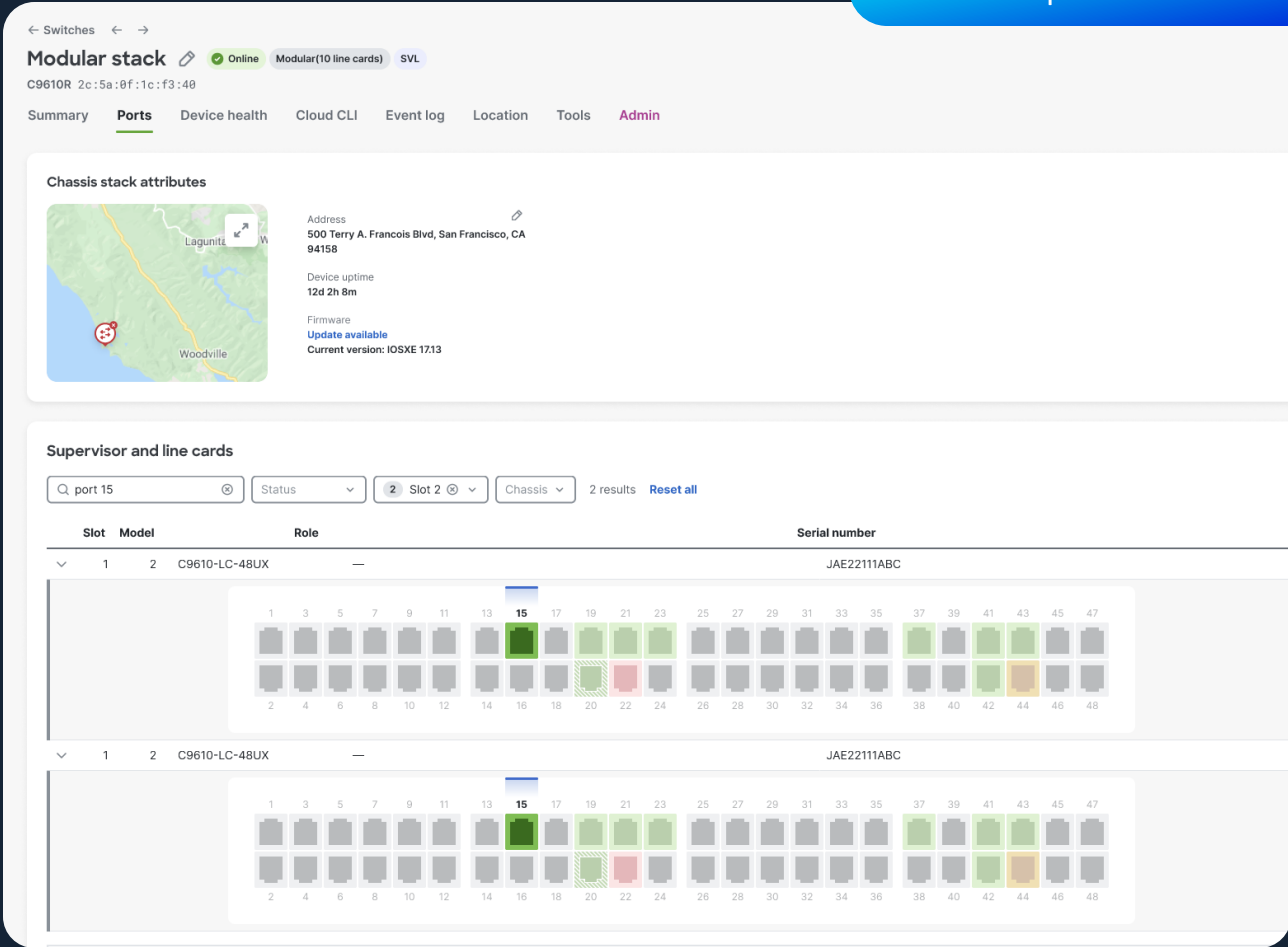


Cloud management for all IOS XE switches

Sophistication, simplicity, and scale, in a single view

Expanding cloud management support into modular core switches

BETA | DECEMBER

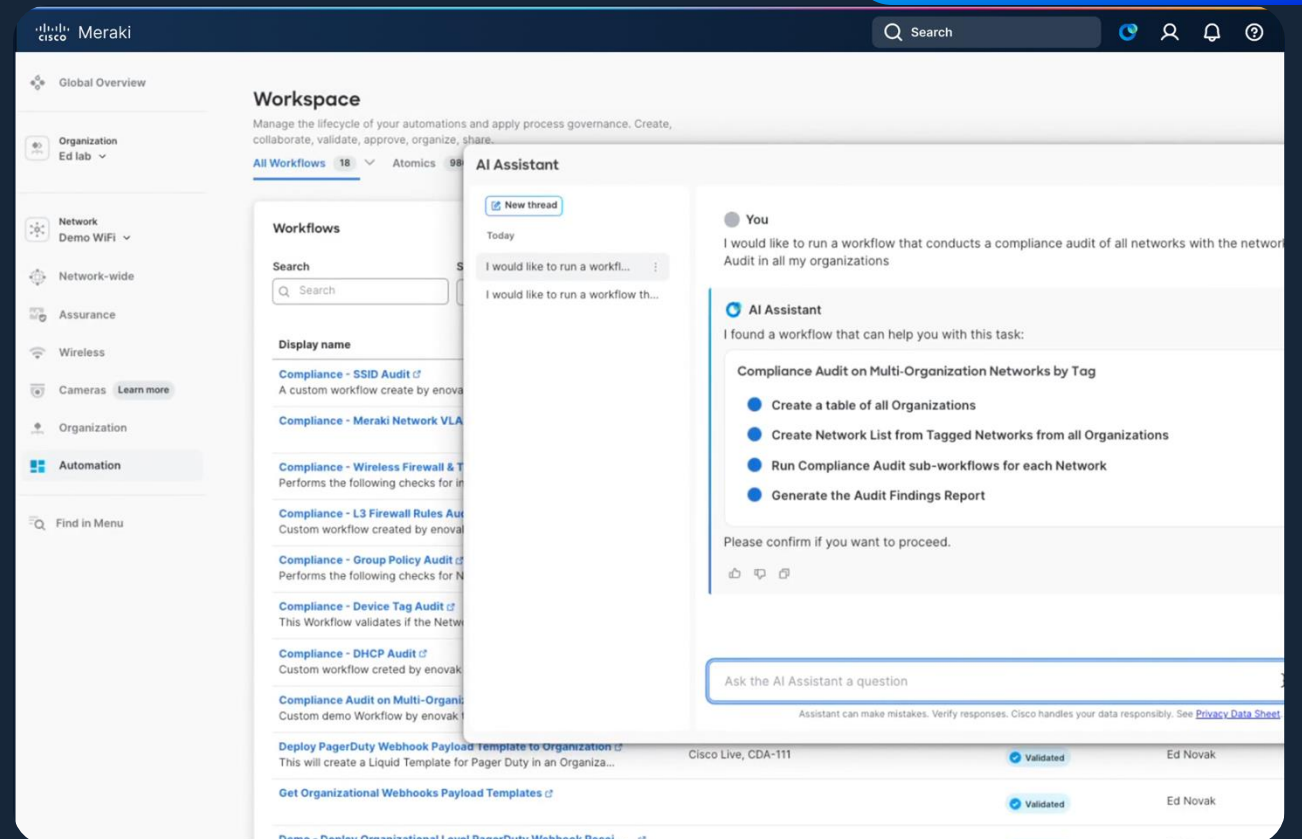


C9610 Smart Switches

Accelerate cross-domain deployments with AI Assistant

Automate workflows across Meraki, Catalyst Center, Catalyst SD-WAN Manager, ISE, Nexus, and more

AVAILABLE | TODAY



Create fabric

- Network-wide
- Security & SD-WAN
- Switch
- Wireless
- Systems Manager
- Camera
- Sensors
- Insight

Organization

Admin

1 Fabric setup

2 VRFs

3 Fabric subnets

4 Fabric border routing configuration

5 Summary

The Meraki fabric can be composed of one or many networks and devices in those networks to provide a BGP-EVPN fabric overlay.

To create a fabric, you will need to provide a name, select one or many networks where the fabric will be built, and select and assign the roles to the applicable switches in the list below.

Fabric name

San Jose campus

Select networks/network group

Network A

Network B

BGP autonomous system number

65500

BGP auth key

Underlay loopback IP pool

192.0.0.0/23

Select roles for devices

The list will populate all fabric supported switches that are in the networks selected. The default roles are defined as Borders, Spines, and Leaves, but can be modified to assign multiple roles to a single switch based on the network design and use case.

Search

Network

Model

Role

Filters 6 results

2 items selected Select all

Remove role

Edit role

Devices	Status	Local IP	Networks	Serial column	Tag	Roles	Action
<input checked="" type="checkbox"/> MDF Core-01(9500-24Y4CX2)	Online	10.10.100.1	Network A	Serial number	Tag		
<input checked="" type="checkbox"/> MDF Dist-01 (9500-48Y4Cx2)	Online	10.10.192.1	Network A	Serial number	Tag 1 Tag 2		
<input type="checkbox"/> MDF Dist-02 (9500-48Y4Cx2)	Online	10.10.176.1	Network A	Serial number	Tag 2	Leaf	
<input type="checkbox"/> NetB-MDF-Stack (9300x Stack)	Online	10.10.20.1	Network B	Serial number	Tag 3	Border Spine Leaf	
<input type="checkbox"/> NetC-MDF-Stack (9300x Stack)	Online	10.10.40.1	Network C	Serial number	Tag	Border	
<input type="checkbox"/> NetD-MDF-Stack (9300x Stack)	Online	10.10.30.1	Network D	Serial number	Tag	Border	

Rows per page

30

1-30 of 300

1

2

...

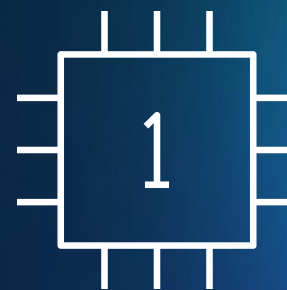
10

>

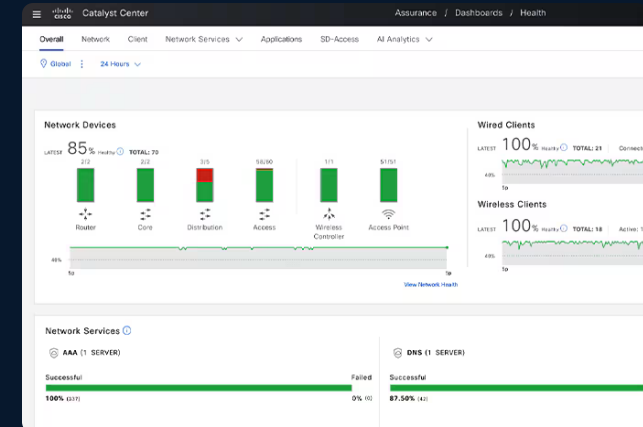
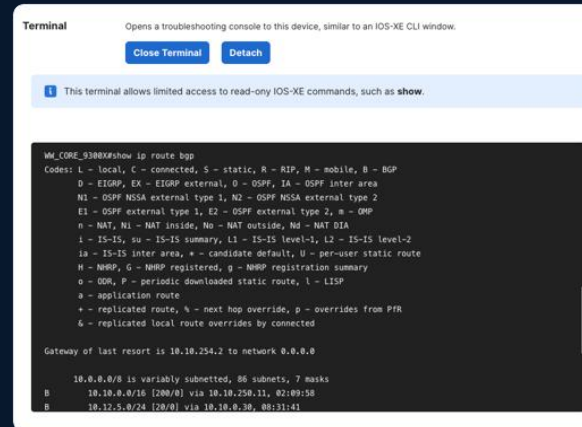
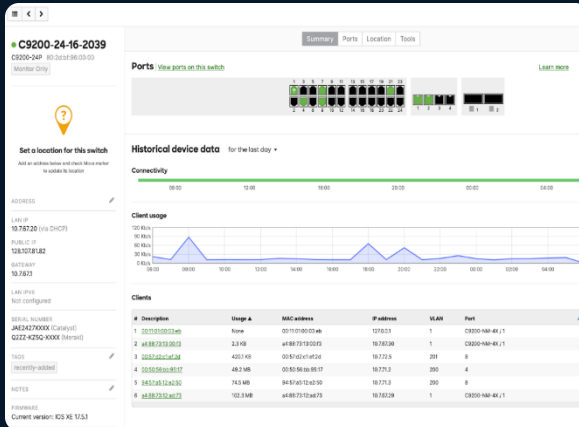
Cancel All changes saved

Next

Scalable devices ready for AI



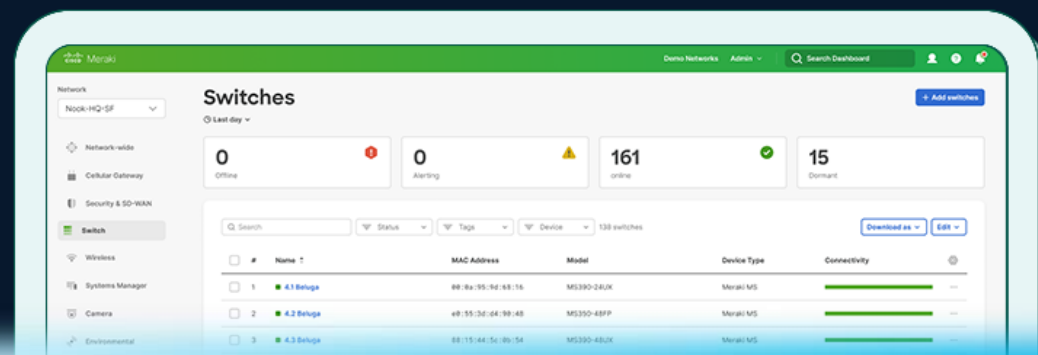
We are now making it simpler to choose how you experience our platform



One Device, One License, One OS, Multiple Ways to Manage



Unlocking the full C9000 Portfolio on the platform



Preview: Extend secure connectivity to rugged outdoor networks



IE3500*

2H 2025 - 2026

AVAILABLE NOW



C9300L



C9300



C9300X



C9200L



C9500



C9200/CX



C9300LM



C9350



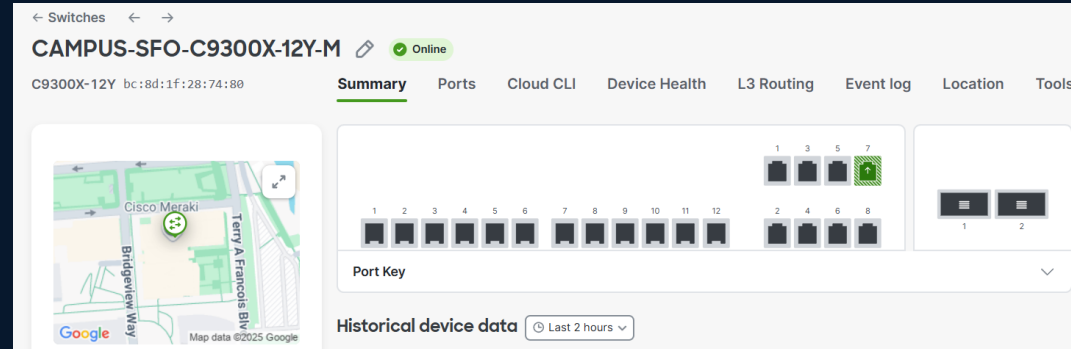
Modular*

CY26*

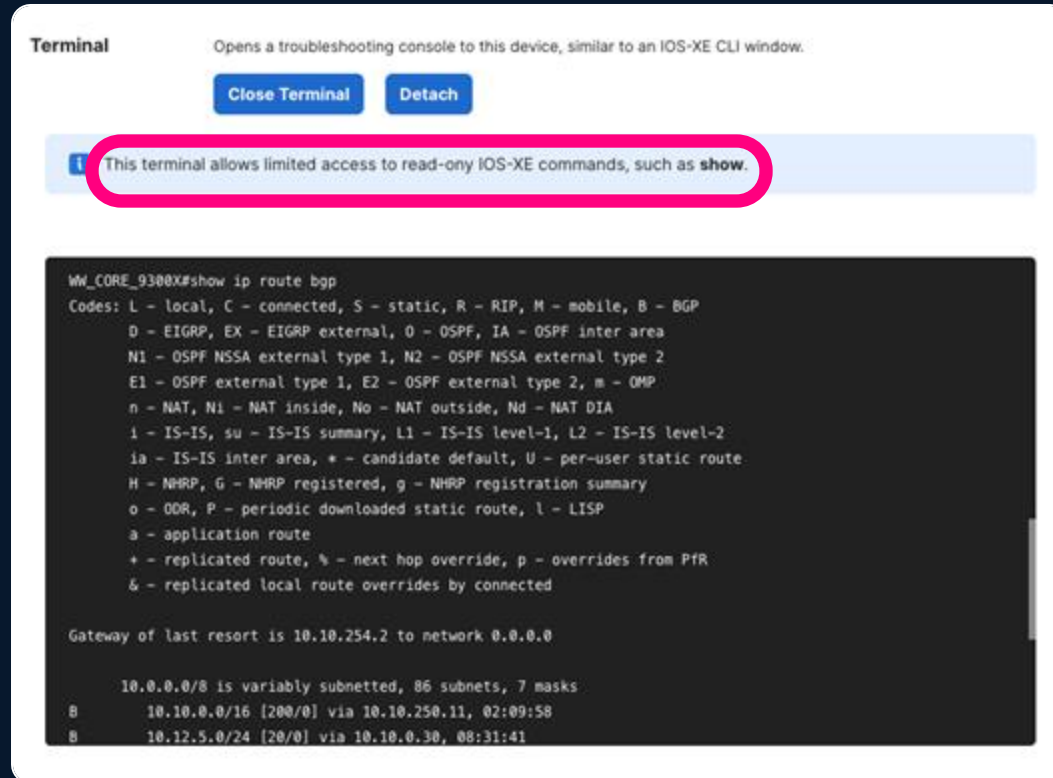
Configuration: Cloud

Cloud-managed experience

- Same look and feel as traditional Meraki
- Existing C9000 CLI devices can be migrated to Cloud Operating Mode
- Migration = configuration 'wipe'
- Rich telemetry and assurance
- Cloud CLI – **Read Only**
- Cloud-based configuration, ZTP, and firmware management



Cloud Native IOS-
XE

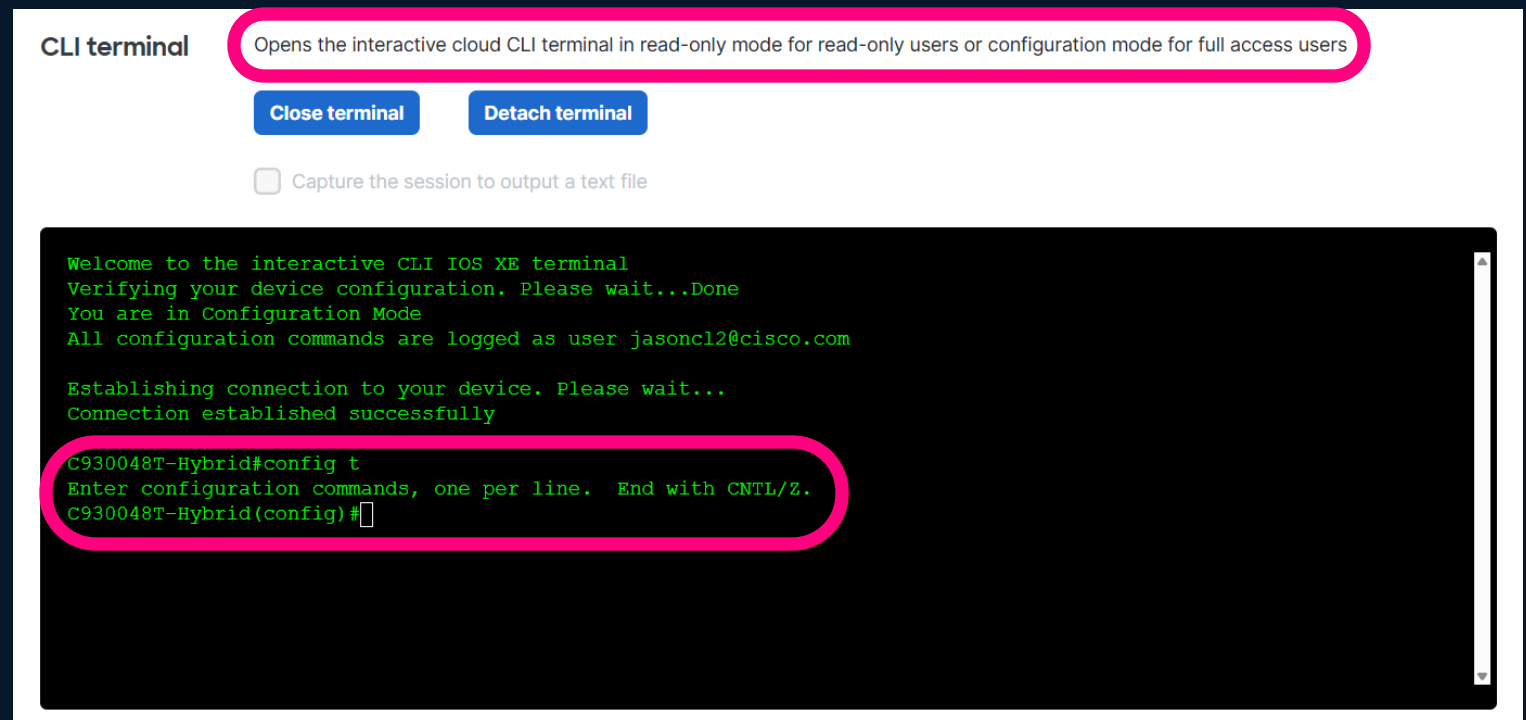
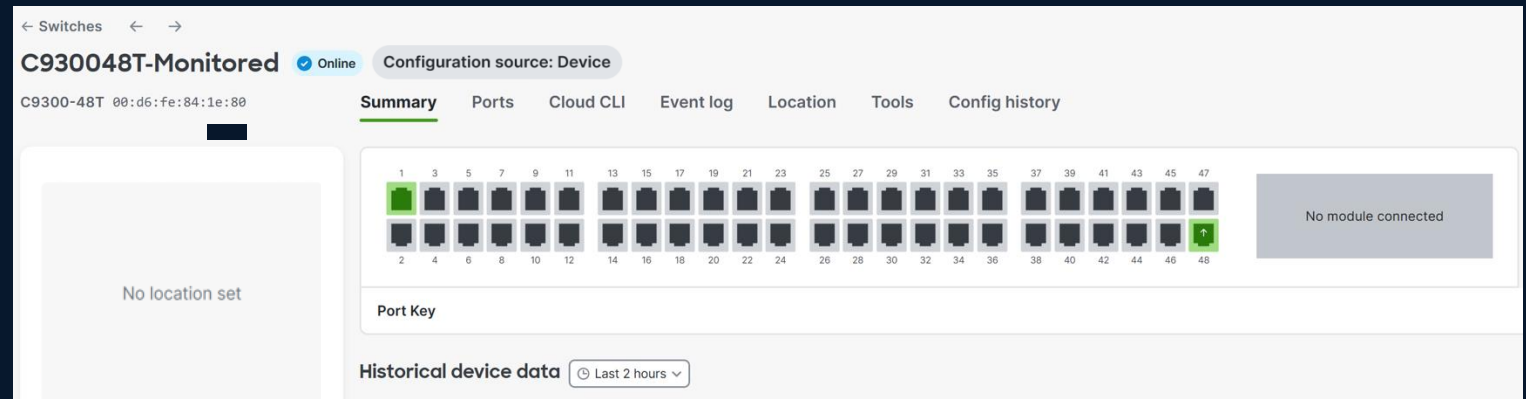


Firmware
IOS XE 17.15.2
Update available
Upgrade Status
—

Configuration: Device

Access to Cloud CLI

- Uses existing DNA Licensing
- Ideal for brownfield deployments – no data-plane configuration changes
- Troubleshooting telemetry and alerts
- Cloud CLI – **Read or config mode**
- Local configuration
- Cloud stored configuration history and diff
- Firmware management road-mapped



Inventory

[View old version](#)

View deployed and available devices in your organization. You can claim new devices to add to the list below. After selecting devices below, you can add them to a new or existing network.

[Global Overview](#)[Organization](#)
Eh ▾[Network](#)
Eh2 ▾[Network-wide](#)[Assurance](#)[Switching](#)[Wireless](#)[Insight](#)[Organization](#)[Access Manager](#)[Find in Menu](#)☐ MAC address☐ 14:9f:43:ee☐ 6c:7f:0c:fb☐ 6c:7f:0c:fb☐ 6c:7f:0c:fb☐ ac:d3:1d:ff☐ cc:9c:3e:e8☐ 14:9f:43:ee☐ b8:ab:61:fa☐ b4:df:91:15☐ 6c:de:a9:00☐ bc:db:09:e2☐ bc:db:09:e2☐ bc:db:09:e2:d3:e6☐ 2c:3f:0b:05:4d:80☐ 2c:3f:0b:04:5b:80☐ 00:84:1e:3e:6e:8a☐ 14:9f:43:e9:0d:2a

Claim individual devices



Scan with Meraki mobile app

Download the Meraki Mobile app for iOS or Android and use Claim Device

Enter manually

Claim individual devices and license keys, or just hardware. To name device at the same time, enter using the format: "device cloud ID, name" for each line

Device Cloud ID (Meraki serial number) or license key - one per line

Where can I find these numbers?

[Cancel](#)[Back](#)[Claim devices](#)[Download ▾](#)[+ Claim devices](#)

MS130R-8P

MS150-48MP-4X

MS150-24MP-4X

MS150-24P-4X

Z4

CW9164I

MS130R-8P

MS130R-8P

MV13

MV13

MS130-12X

MS130-12X

MG51

MS390-24UX

MS390-24U

MT40

MT40

Cloud Managed Catalyst Live Demo

INTRODUCING

The Cisco C9000 Series Smart Switches

Powerful, secure, easy to manage

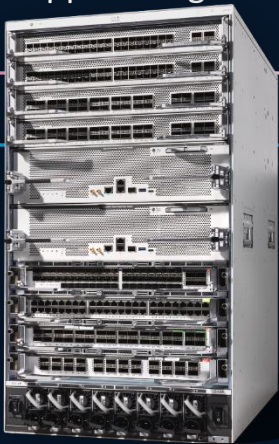
- Cisco Silicon One - industry's most powerful, programmable ASIC
- High-performance, programmable x86 CPU
- Cisco IOS XE w/ secure boot & Trustworthy Solution
- Universal PoE+ & PoE Analytics
- Switch power optimization & FMP-ready
- On-device ThousandEyes App hosting

Cisco C9350 Smart Switch



- 1.6Tbps Stacking bandwidth
- 4x100G Uplink Modules
- <5 μ s Latency
- 4x Higher MAC & ARP density

Cisco C9610 Smart Switch



- 25.6 Tbps System bandwidth
- 256x100G Modular Line-Cards
- <5 μ s Latency
- 10 slot To power the core

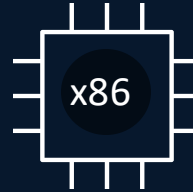
Introducing the Next Generation of Campus Switching

Silicon One ASICs, AI-Ready Infrastructure, Updated IOS-XE



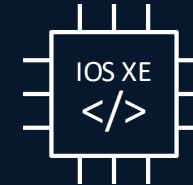
Silicon One ASICs Adaptability

- Programmable at all layers
- Permits multiple use cases in a converged solution
- Virtual slicing for parallel processing



X86 Processor AI Readiness

- Control-Plane scale for agentic-AI and AI agents at scale.
- Enhances Software-assisted Services (AVC/XDR)
- Advanced App-Hosting with AI-Hosting (Edge Compute)



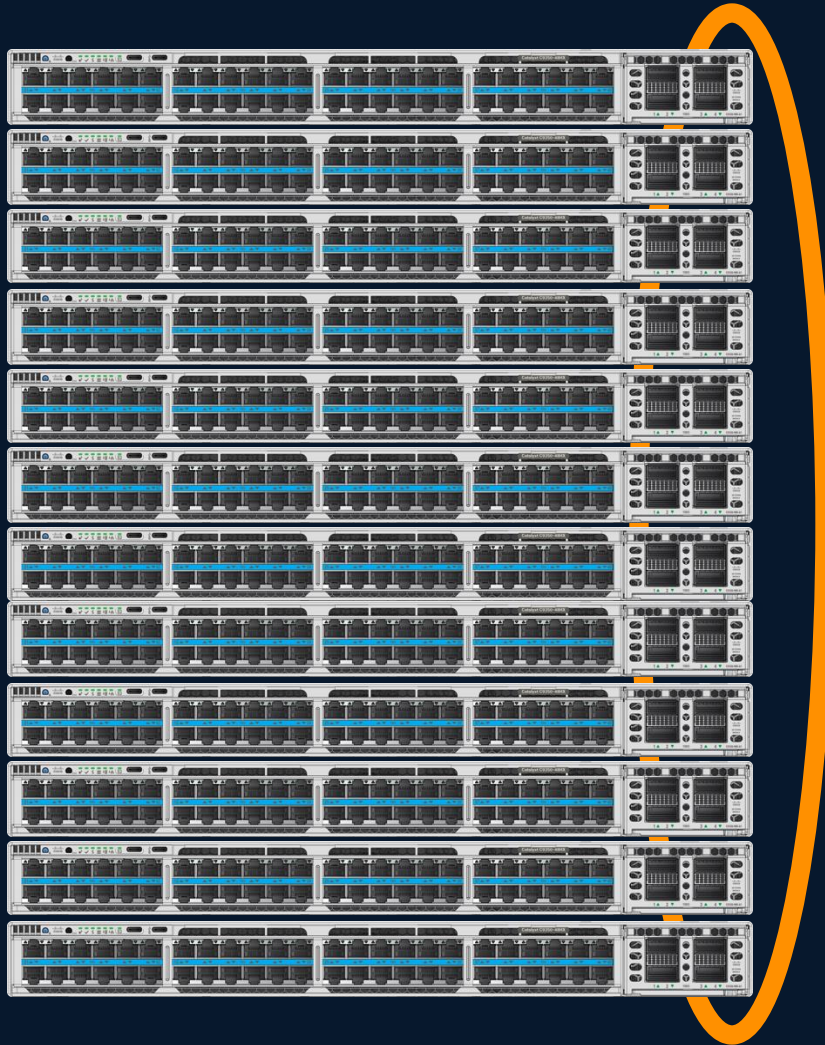
Updated IOS XE Security

- Supports post-quantum cryptography
- Trustworthy Linux kernel that securely hosts applications
- Leverage advanced Linux features for Cisco Live Protect

Smart Power, PoE Assurance and Energy dashboard

Cisco C9350 Series Switches

New stacking architecture for the new generation of campus switching



Next generation stacks with up to 12 members*

8 x C9300X

256 ports of 90W UPOE

384 ports of 10G mGig

12 x C9350

576 ports of 90W UPOE

576 ports of 10G mGig



Unified Control-Plane & Distributed forwarding Architecture



Sub-Second Stateful Switchover with SSO & NSF



8/12* Member Stacking with Proven A/S/M election mechanism



Plug & Play Solution

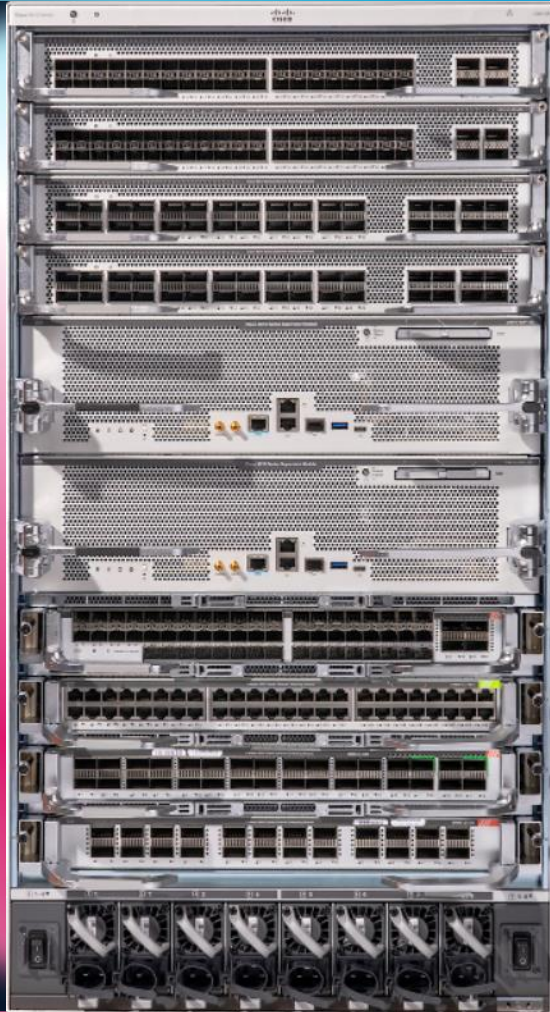
Highest Stacking Density in the Industry

Cisco C9610 Core Smart Switches




With Supervisor 3 and Supervisor 3 XL






17.18.1



C9610-SUP3 - E100

-  1M IPv4 Prefixes
-  768K Exact Match
-  256K Policies

C9610-SUP3XL - K100

-  2M IPv4 Prefixes
-  1.2M Exact Match
-  512K Policies

25.6 Tbps (full duplex)

3.2 Tbps per slot

8 core X86 CPU
@ 2.5 GHz

High density 25G / 100G /
400G ports

M.2 SATA SSD
(optional: up to 1 TB)

Reversible Airflow

4x K100/E100
+ 1x Q200 ASIC

8x Line Card slots
+ **2x Supervisor** slots

32GB DDR4
DRAM

Copper and Fiber
Mgmt ports

1 x USB 3.0 storage
1x USB C console

Built in RFID

FUTURE

Live Protect

Mitigate new threats in near-real time—without upgrading image or rebooting device

The screenshot displays the Cisco Catalyst Center interface for Network Device Security. The main section is titled "Device vulnerabilities" and shows a summary of 73 all vulnerabilities, 12 Live Protect available for deployment, and 37 Live Protect deployed. Below this is a table of vulnerabilities with columns for Vulnerability, Details, CVSS, Affected devices, Live Protect status, and Hits. The table lists several vulnerabilities, including CVE-2023-20198, CVE-2024-20169, CVE-2023-20154, CVE-2023-20049, CVE-2024-20467, CVE-2024-20480, CVE-2023-20177, CVE-2024-20508, CVE-2023-20200, and CVE-2024-20437. The Live Protect status for each vulnerability is indicated by a green shield icon and a label (Available, Protection, or Observation). The interface also includes a search bar, filters, and a pagination control at the bottom right.

Vulnerability	Details	CVSS	Affected devices	Live Protect	Hits
CVE-2023-20198 New	Web UI Unauthorized Access Vulnerability	10.0	1	Available	—
CVE-2024-20169	Command Injection Vulnerability	9.8	1	Available	—
CVE-2023-20154	SNMP Remote Code Execution	9.8	2	Available	—
CVE-2023-20049 New	Authentication Bypass Management Interface	9.6	1	Protection	6
CVE-2024-20467	Privilege Escalation via CLI	9.1	1	Observation	5
CVE-2024-20480	SSH Key Management Vulnerability	9.1	2	Available	—
CVE-2023-20177 New	IPv6 RA Guard Bypass	8.6	1	Protection	1
CVE-2024-20508	Privilege Escalation through Configuration API	8.6	2	Protection	3
CVE-2023-20200	CLI Privilege Escalation	8.6	2	Available	—
CVE-2024-20437	Buffer Overflow in HTTP Server	8.4	1	Observation	8

Network Device Security

Overview Device vulnerabilities

73 All vulnerabilities



12 Live Protect available for deployment



37 Live Protect deployed



CVSS score ▾




Device family ▾

Live Protect status ▾

 Filters 73 results








Apr 22 2025 09:41

[Rescan](#)

Vulnerability	Details	CVSS 	Affected devices	Live Protect 	Hits 
CVE-2023-20198 New	Web UI Unauthorized Access Vulnerability	<div><div></div></div> 10.0	1	Available	— ...
CVE-2024-20169	Command Injection Vulnerability	<div><div></div></div> 9.8	1	Available	— ...
CVE-2023-20154	SNMP Remote Code Execution	<div><div></div></div> 9.8	2	Pending	— ...
CVE-2023-20049 New	Authentication Bypass Management Interface	<div><div></div></div> 9.6	1	Protection	6 ...
CVE-2024-20467	Privilege Escalation via CLI	<div><div></div></div> 9.1	1	Observation	5 ...
CVE-2024-20480	SSH Key Management Vulnerability	<div><div></div></div> 9.1	2	Available	— ...
CVE-2023-20177 New	IPv6 RA Guard Bypass	<div><div></div></div> 8.6	1	Protection	1 ...
CVE-2024-20508	Privilege Escalation through Configuration API	<div><div></div></div> 8.6	2	Protection	3 ...
CVE-2023-20200	CLI Privilege Escalation	<div><div></div></div> 8.6	2	Pending	— ...
CVE-2024-20437	Buffer Overflow in HTTP Server	<div><div></div></div> 8.4	1	Observation	8 ...

Rows per page 20 ▾ 1-20 of 73 < 1 2 ... 10 >

Extending our Wi-Fi 7 Portfolio

Small branch			Mid-size deployments					
								
CW9171I	CW9172H	CW9172I	CW9174E	CW9174I	CW9176D1	CW9176I	CW9178I	CW9179F
4 Spatial Streams	6 Spatial Streams	6 Spatial Streams	8/10 Spatial Streams	8/10 Spatial Streams	12 Spatial Streams	12 Spatial Streams	16 Spatial Streams	16 Spatial Streams
Omnidirectional	Hospitality	Omnidirectional	External antennas	Omnidirectional	Integrated Directional, URWB	Omnidirectional, URWB	Omnidirectional, URWB	LPV/Stadium
NOV '25	SHIPPING	SHIPPING	NOV '25	NOV '25	SHIPPING	SHIPPING	SHIPPING	SHIPPING

Wi-Fi 7 | Global use APs | Unified license | AI optimized

One Cisco Wireless Access Point

Global Use AP, Unified Product, Single SKU



Cisco Catalyst Management Mode
C9800 & Catalyst Center Stack



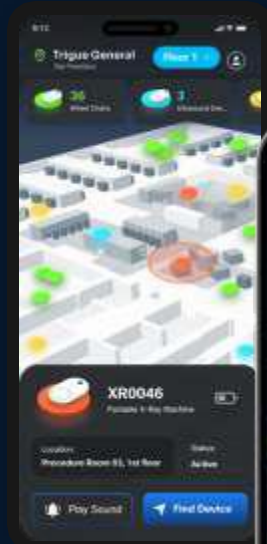
Meraki Management Mode
MR Dashboard Stack



Join WLC or Meraki stack on Day 0
Management Mode Change from Day 1 to N

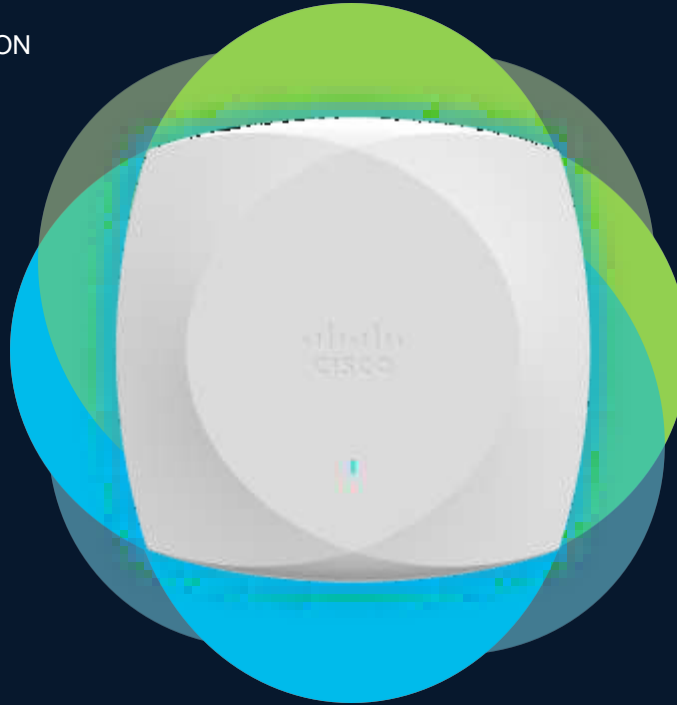
Outcomes, powered by the network

With Cisco Spaces and Cisco's Wi-Fi 7 access points, use cases come built in



ASSET TRACKING

INDOOR NAVIGATION



OCCUPANCY ANALYTICS



SUSTAINABILITY

Introducing Cisco Wi-Fi 7 Entry Level AP

Step up to Wi-Fi 7

Enterprise class performance at an affordable price point

Easy to Deploy

Easily deploy Wi-Fi coverage for branch offices and retail stores without a dedicated IT staff

Low Energy Footprint

Minimal power consumption with maximum functionality. Full AP functionality enabled with PoE+ power budget



Compared to CW9172I:
One less Wi-Fi radio
No 2x2 + 4x4 mode

CW9171

4 spatial streams
dual radio tri-band

2.4GHz and 5GHz 2x2:2
-or-
2.4GHz and 6GHz 2x2:2

BLE/IoT and dedicated scan radio

Single 2.5Gbps multigigabit uplink

USB 2.0 – 4.5W

DC Power Jack

Integrated Omnidirectional

Global Use AP

Introducing Cisco Wi-Fi 7 Mid Tier AP

Modernize Your Network

Upgrade your network to the latest Wi-Fi 7 technology with the best security and increased performance

Balanced Cost to Performance

High value Wi-Fi 7 coverage at the right price

Flexible Deployment Options

Available with integrated omnidirectional antennas or external antenna connectors for specialized applications



CW9174I/E

8 or 10 Spatial Streams

2x2:2 on 2.4GHz and 4x4:4 on 5GHz and 6GHz

-or-

4x4:4 on 2.4GHz and 5GHz

BLE/IoT and dedicated scan radio

Single 5Gbps multigigabit uplink

USB 2.0 – 9W

DC Power Jack

Extended operating temperature range, -20C to 50C (9174E only)

Integrated Omnidirectional or DART-8 External Antenna

Global Use AP

Compared to CW9176I/D1:
2x2 2.4GHz in Tri-radio mode
No GPS
No UWB
No Dual 5GHz
5Gbps Uplink

Introducing the Cisco CW9800L Wireless Controller



Cisco CW9800L Wireless Controller



Up to 10 Gbps Backhaul

1/10G SFP+ Uplinks

10,000 Clients

500 APs

Increased performance and 2x capacity compared to base C9800-L!

Simple

- Familiar WebUI and config structure reduces upgrade friction
- New external redundant power supply option
- Up to 10dB quieter than C9800-L

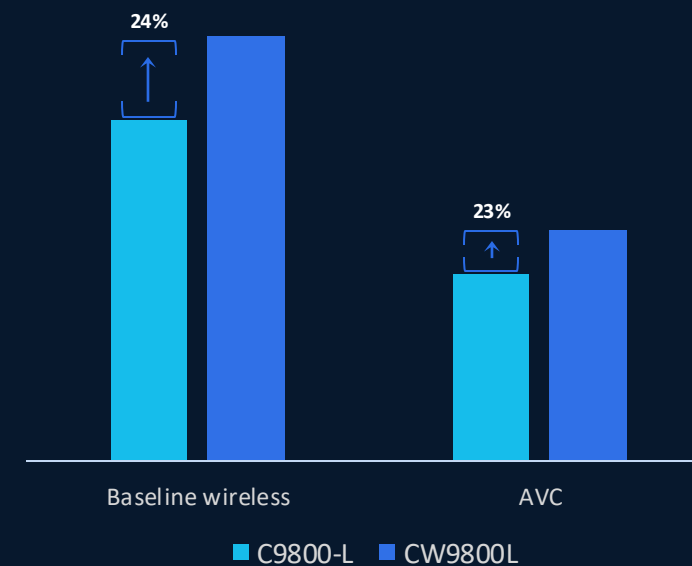
Secure

- Designed for WPA3 and beyond
 - HW acceleration improves performance when enabling advanced encryption

Sustainable

- 2x Increase in AP and client scale allows for future growth

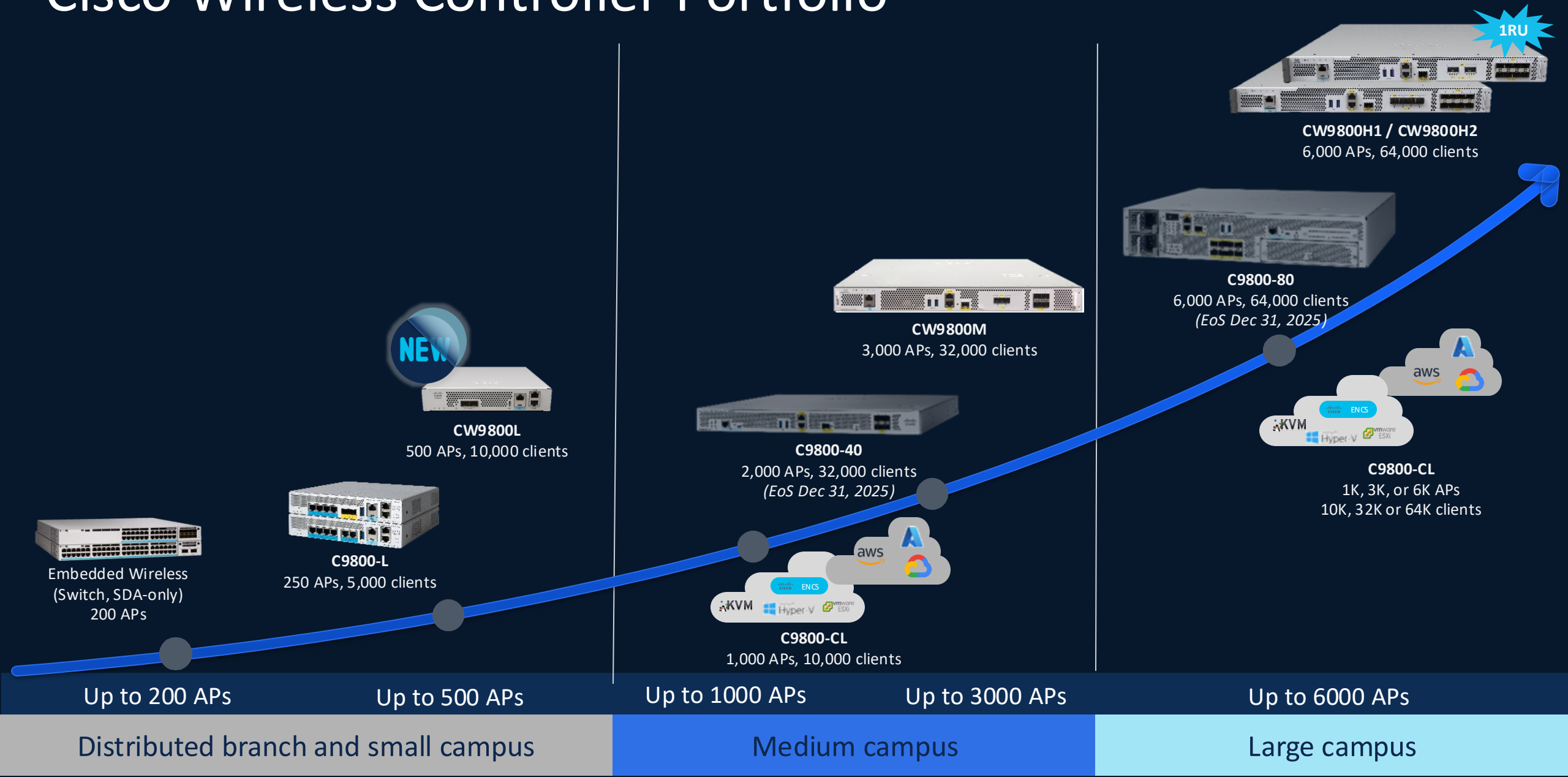
Throughput



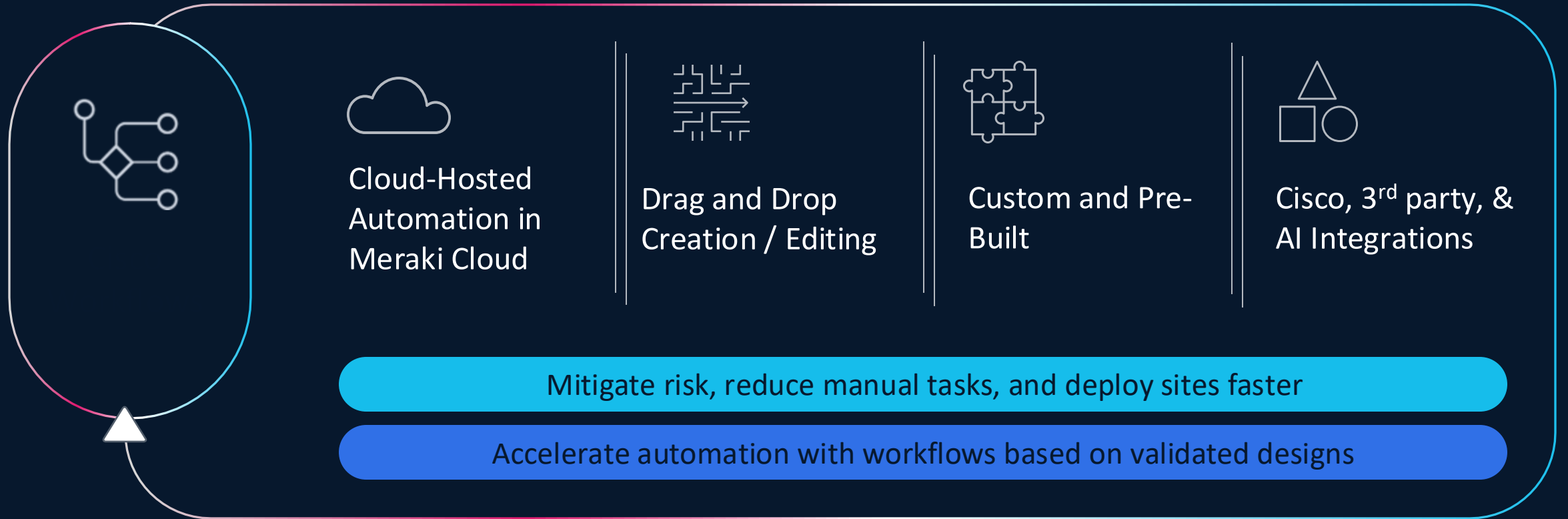
Performance tests consist of bi-directional (simultaneous 50% up/down) "IMIX" real-world traffic



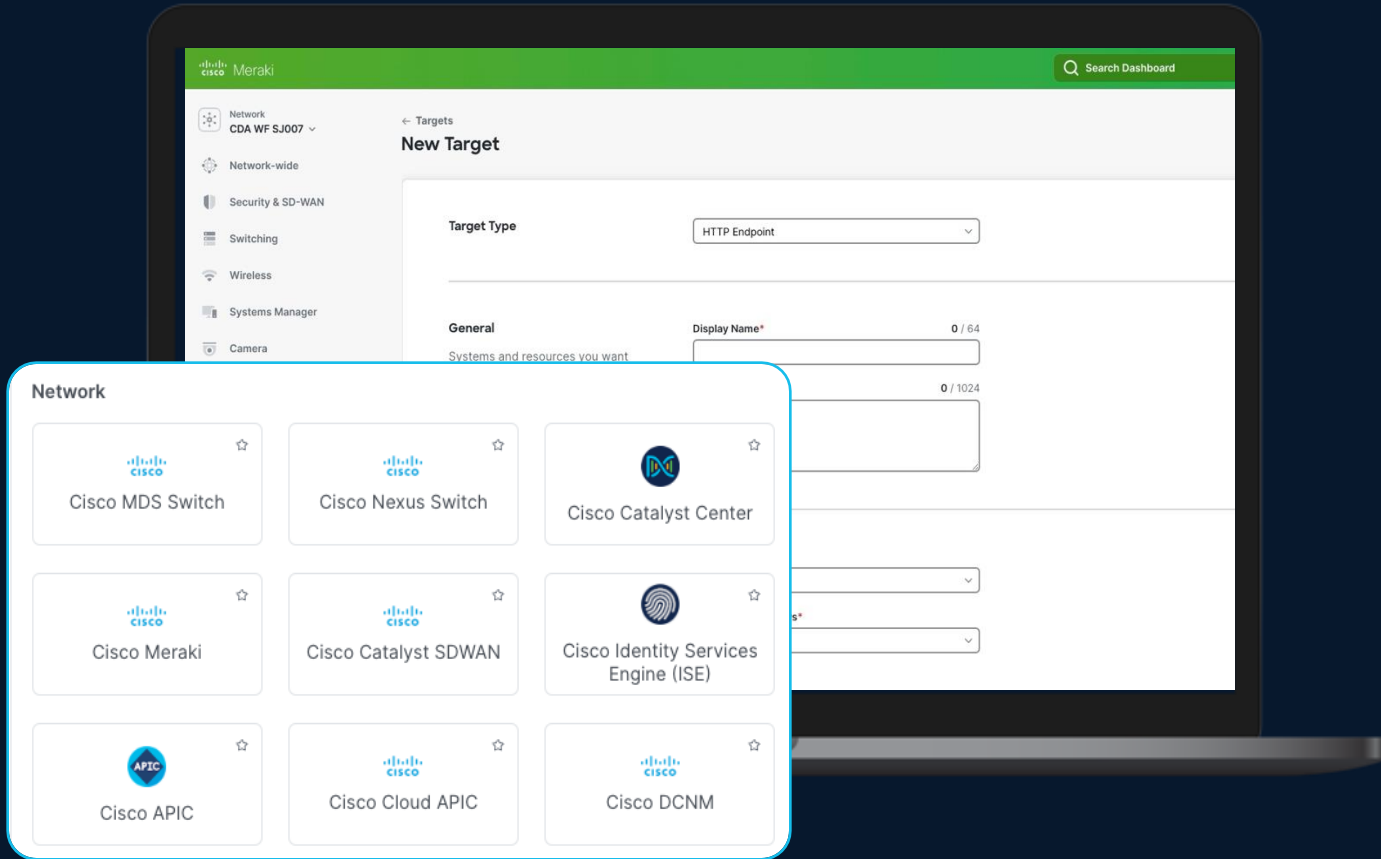
Cisco Wireless Controller Portfolio



Cisco Workflows in the Meraki



Central automation for Cisco and third-party applications



Automate tasks across Meraki, Catalyst Center and SD-WAN, ISE, ACI, Nexus, and more.



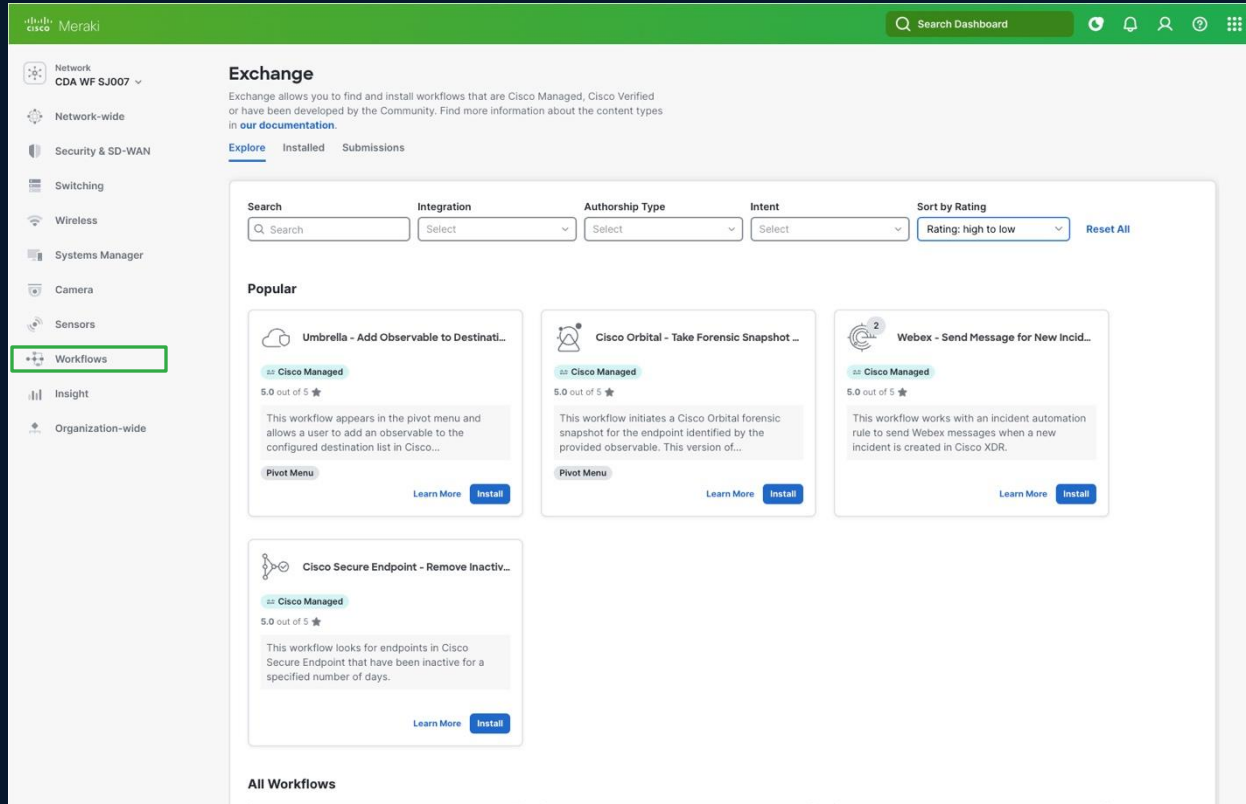
Integrate third-party applications such as ServiceNow into automation outcomes with Cisco domains.



Connect cloud and on-premise controllers to extend automation across the Cisco portfolio and beyond.

Workflow Exchange

Community driven automation with the ability to submit



Comprehensive Catalog

From Cisco, Partners, or the community.



Based on Validated Designs

Cisco Managed or Cisco Verified



Updated Regularly and Often

A dynamic exchange provided by Cisco.
Submit your own!

Workspace

Favorite, organize, and manage workflow automation

Workflows

Workflows allow you to investigate security events, automate responses, and eliminate repetitive tasks by using activities, logic, and even other workflows to communicate with other systems and resources. From here you can access, create, and import workflows.

All Workflows 14 Atomics 6 Recents Favorites 2

Workflows [Import Workflow](#) [Create Workflow](#)

Search Status Category [Reset All](#)

Display Name	Categories	Status	Owner	Last Modified	Actions
Deploy Wireless Network to ISE Select a Meraki Device from Inventory then add this Dev...	Cisco Identity Services Engine	Validated	Cisco managed	2/26/2025, 11:51:23 AM	...
Cross-Organizational Guest Hot Spot Management	SSID	Created	CJ	2/12/2025, 1:57:25 PM	...
Update Wireless L7 Firewall Rules		Validated	CJ	2/12/2025, 1:23:00 PM	...
Define Virtual Networks Allows the user to define one or more Virtual Networks...	CatalystSDWAN	Export Completed	Cisco managed	2/12/2025, 9:57:08 PM	...
Wireless and Traffic Shaping SSID Compliance Check Wireless and Traffic Shaping Checks...	SSID	Validated	Cisco managed	2/12/2025, 10:27:27 AM	...
CJ - Get Meraki Networks Returns Meraki Networks for given Organization ID.	Meraki	Validated	CJ	2/9/2025, 8:11:47 AM	...
Validate Meraki Appliance DHCP Configurations	Meraki	Validated	Cisco managed	2/6/2025, 6:06:06 PM	...
Set Meraki Network SSID PSK Password Find Networks and Change SSID PSK Passwords	Meraki	Validated	MK	2/6/2025, 4:06:22 AM	...
Validate Network Tags On Meraki APs Check all the devices in the selected Meraki Network for...	Meraki	Validated	MK	2/2/2025, 11:45:33 AM	...
Cross-organizational SSID management	Meraki	Validated	MK	1/5/2025, 10:27:08 PM	...
Manage Security Group Policy ACLs	ISE	Invalid	MK	1/1/2025, 8:27:27 AM	...



Quickly View Workflows in Meraki

See status, owner, and details



Duplicate, Edit, and Share

Orchestrate automation commands

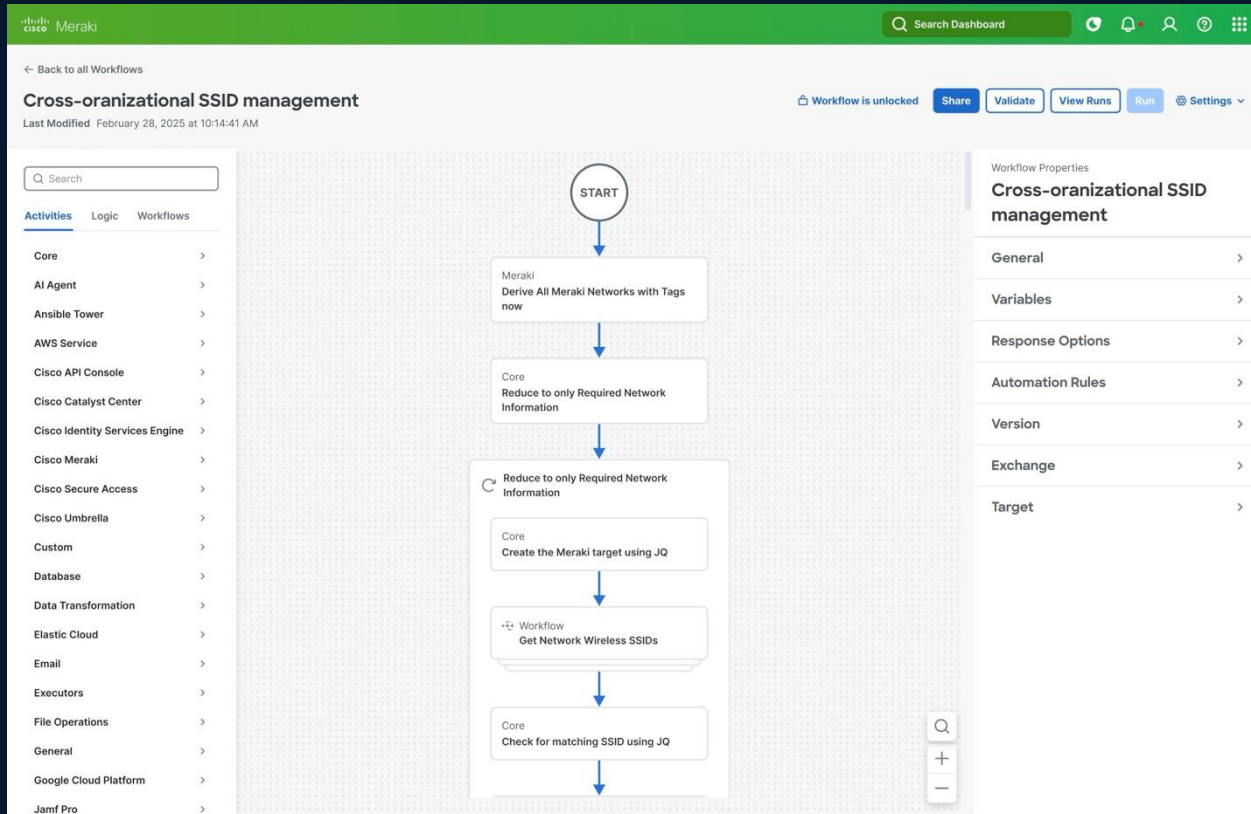


Manage Your Team

Enable Network Operations for daily tasks or
Network Designers to create

Workflow Editor

Drag-and-drop creation, sub-workflows, broad integrations, approvals



Drag-and-Drop Builder
No code creation and editing



User Flexibility
Data transformations, python, JSON table creation, loops, serials, conditions



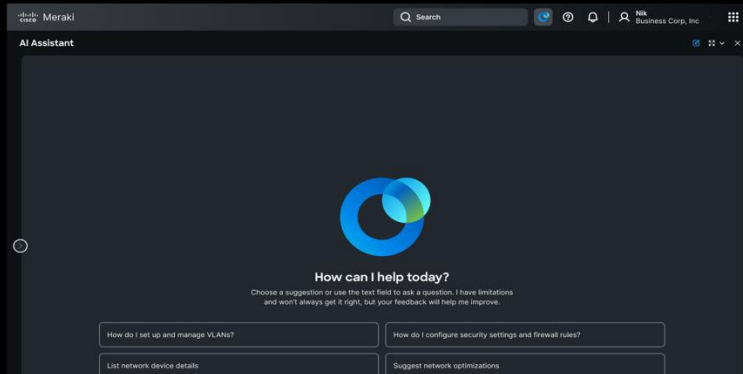
Flexible Deployment Options
Out-of-the-box, modified, or fully custom

AI driven dynamic workflows

Leverage AI to assist Network Operator interaction with automation

Ask for help

- Make a request using natural language



Speak your mind

Ask the AI Assistant for help with your tasks



Responsiveness

Enquire to learn more about the outcome

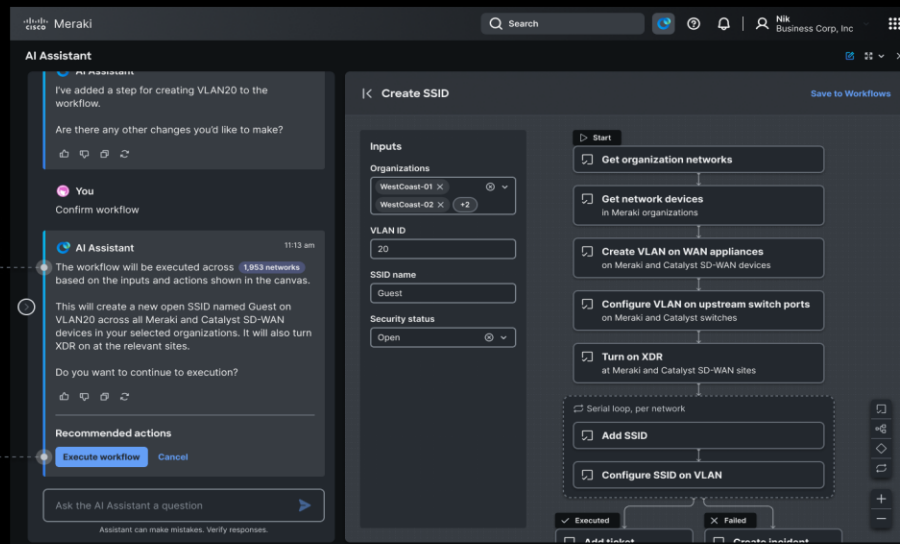


Dynamic Execution

Interact to ensure your intention

Execute actions

- Build trust with clear communication
- Retain control over network changes



Whats next?



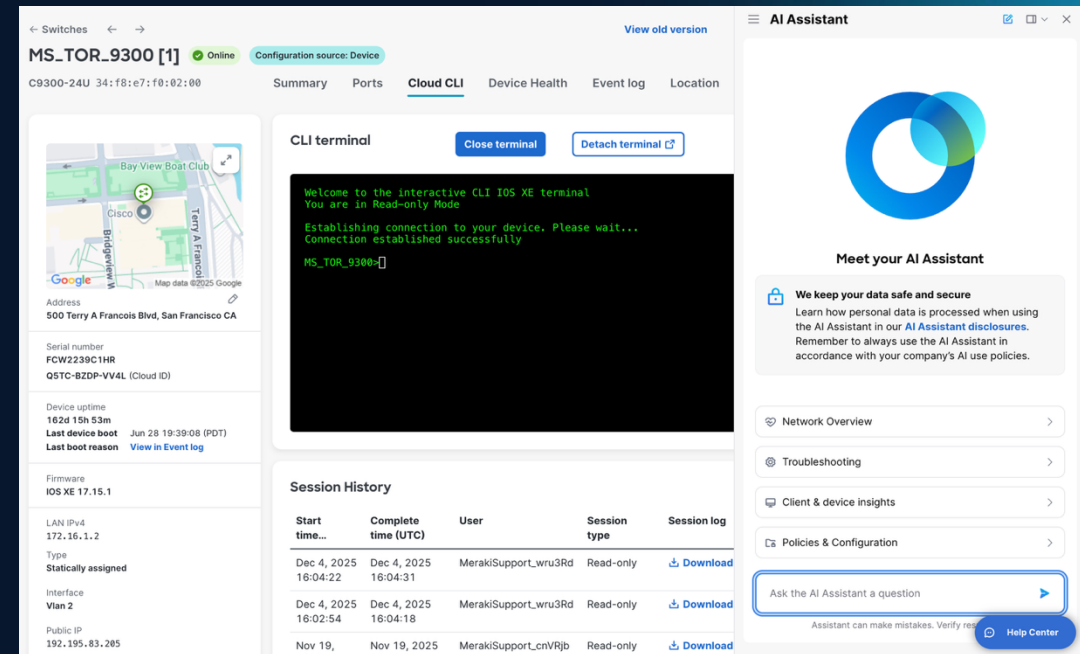
Catalyst 9K



DNA
Essentials

OR

DNA
Advantage

A screenshot of the Cisco DNA Advantage web interface. The interface shows a summary page for a switch named 'MS_TOR_9300 [1]'. It includes a map of the switch's location at 500 Terry A Francois Blvd, San Francisco CA. The interface also displays a CLI terminal window with a successful connection to the device. On the right, there is a sidebar with a 'Meet your AI Assistant' section, a 'Network Overview' section, and a 'Session History' table. The 'Session History' table has columns for Start time, Complete time, User, Session type, and Session log. It lists several sessions with download links for the session logs.

Start time...	Complete time (UTC)	User	Session type	Session log
Dec 4, 2025 16:04:22	Dec 4, 2025 16:04:31	MerakiSupport_wru3Rd	Read-only	Download
Dec 4, 2025 16:02:54	Dec 4, 2025 16:04:18	MerakiSupport_wru3Rd	Read-only	Download
Nov 19, 2025	Nov 19, 2025	MerakiSupport_cnVRjb	Read-only	Download

Let's bring Catalyst into the cloud!

We are here to help. Reach out to your Cisco Account Team, or me personally, dylthomp@cisco.com