

# Unified Campus Experiences

Lila Rousseaux  
Principal Solutions Designer

Jay Bradford  
Solutions Designer

November 19, 2025



# Agenda

1. Cisco's Campus Networking Strategy
2. Platform Modernization
3. Assurance
4. Automation
5. Q&A

# Another massive technology disruption

Internet

Mobility

Cloud

AI

# AI Is Bringing Changes and Challenges

**1,000s**

AI Agents per  
enterprise expected

**#1 risk**

AI-enhanced  
malicious attacks

**64%**

of orgs face IT skills  
shortage by 2026

# Is Your Campus Network AI ready?

For explosive traffic, for increased security risks, for more complexity

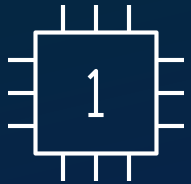


# Architecture for the AI-Ready Secure Campus

**Operational Simplicity**  
Powered by AI



**Scalable Devices**  
Ready for AI



**Security**  
Fused Into the Network



# Operational Simplicity



AI-POWERED PLATFORM

## Catalyst

**Catalyst Center**

**Catalyst License**

**Catalyst Hardware**

MANAGEMENT

LICENSE

CISCO HARDWARE

## Meraki

**Meraki Dashboard**

**Meraki License**

**Meraki Hardware**

# A platform strategy that meets customers where they are



Cloud



On-prem



Hybrid

ONE HARDWARE | ONE LICENSE | ONE SUPPORT

# Our Unified Platform

## PLATFORM

Management

Assurance

API / Integrations

Intelligence

## HARDWARE



Smart  
Switches



Secure  
Routers



Wireless



Industrial  
IoT

# Expanded Cloud Management for Catalyst Portfolio



## Wireless

Full wireless support  
Scale large campus wireless  
with Campus Gateway

GA | MAY



## Switching

Expanded management for  
access and core switching,  
including C9200 and C9300

GA | JULY



## Routing

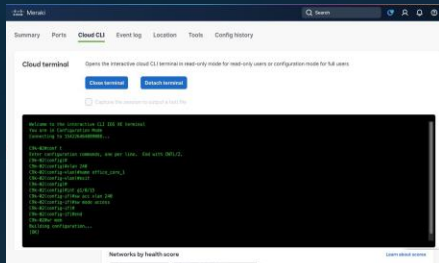
Next-gen routing  
support coming

ALPHA | JUNE

Cloud management powered by cloud-native IOS XE

# Large Campus Cloud Capabilities

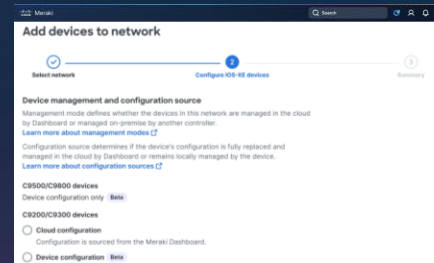
## Retain Advanced Control with Cloud CLI



Simplify onboarding and flexibility with operating mode options and Cloud CLI

GA | JULY

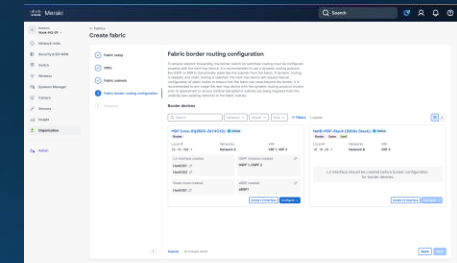
## Powerful Switching Capabilities



Support campus deployments with BGP, VRF, ISSU, and StackWise Virtual

Roadmap

## Fabric for Secure Networking



Simplify NetOps with a secure fabric and micro/macro-segmentation

Roadmap

# Platform Modernization

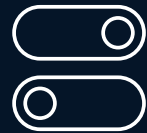
## *Wireless*

# Cisco Wireless Wi-Fi 7

## Meet the family



Global Use Access Points for efficient, smart, scalable operations



Complete connectivity:  
Bluetooth, IoT and location



Sustainably built and  
power-savvy

# Unified Procurement

One



SKU structure  
for hardware

One



Unified  
licensing model

One



Product  
support model

# Wi-Fi 7 for Every Operational Scale



CW9172H

6 Spatial Streams  
Dorm Rooms, Hospitality



CW9174E

8/10 Spatial Streams  
External antennas

NEW!



CW9176D1

12 Spatial Streams  
Integrated Directional

UWB



CW9179F

16 Spatial Streams  
LPV/Stadium



CW9171I

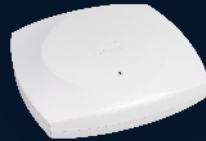
4 Spatial Streams  
Omnidirectional

NEW!



CW9172I

6 Spatial Streams  
Omnidirectional



CW9174I

8/10 Spatial Streams  
Omnidirectional

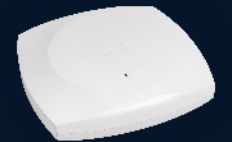
NEW!



CW9176I

12 Spatial Streams  
Omnidirectional

UWB



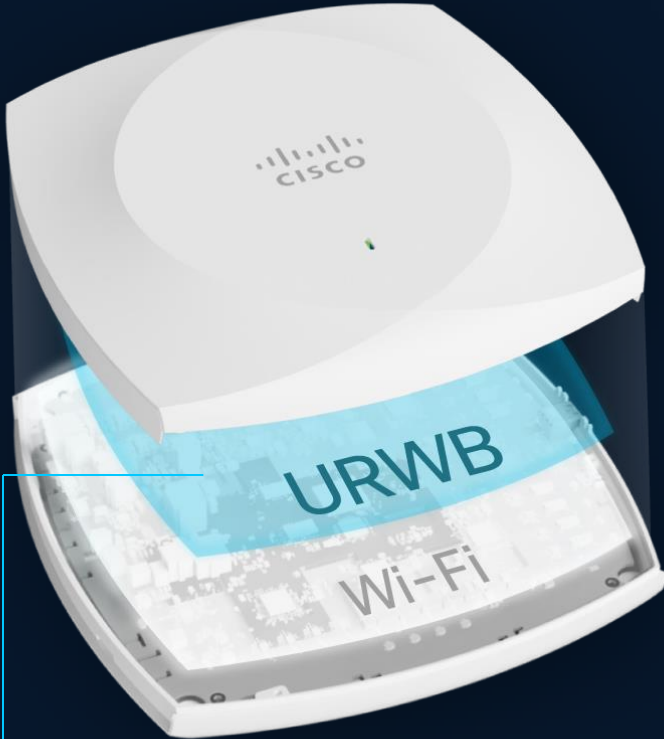
CW9178I

16 Spatial Streams  
Omnidirectional

UWB

Wi-Fi 7 | Global Use AP | Unified License | AI Optimized

# Unified Wi-Fi and URWB Infrastructure



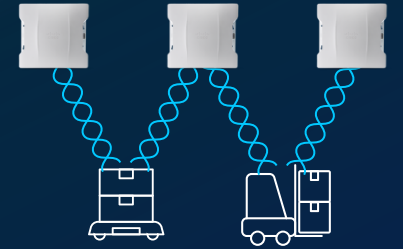
Ultra-Reliable & Ultra-Low Latency  
Wireless Backhaul Built-in  
Enterprise Wi-Fi Access Points

Before

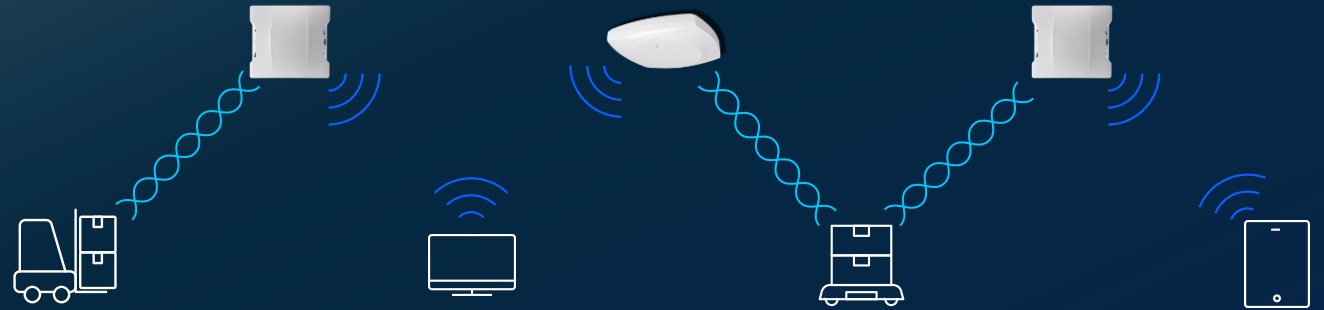
Wi-Fi  
Access  
Network



URWB  
Network



Now



## Unified Wireless Infrastructure

One Management Platform, One wireless infrastructure to install  
Best of Wi-Fi combined with use new cases enabled by CURWB Technology  
Highly resilient always-on connectivity

Scales up to  
5,000 APs  
and 50,000 clients

Easy migration for  
existing LAN  
controller  
architectures

No need to  
re-cable, change  
VLANs, or disrupt  
operations

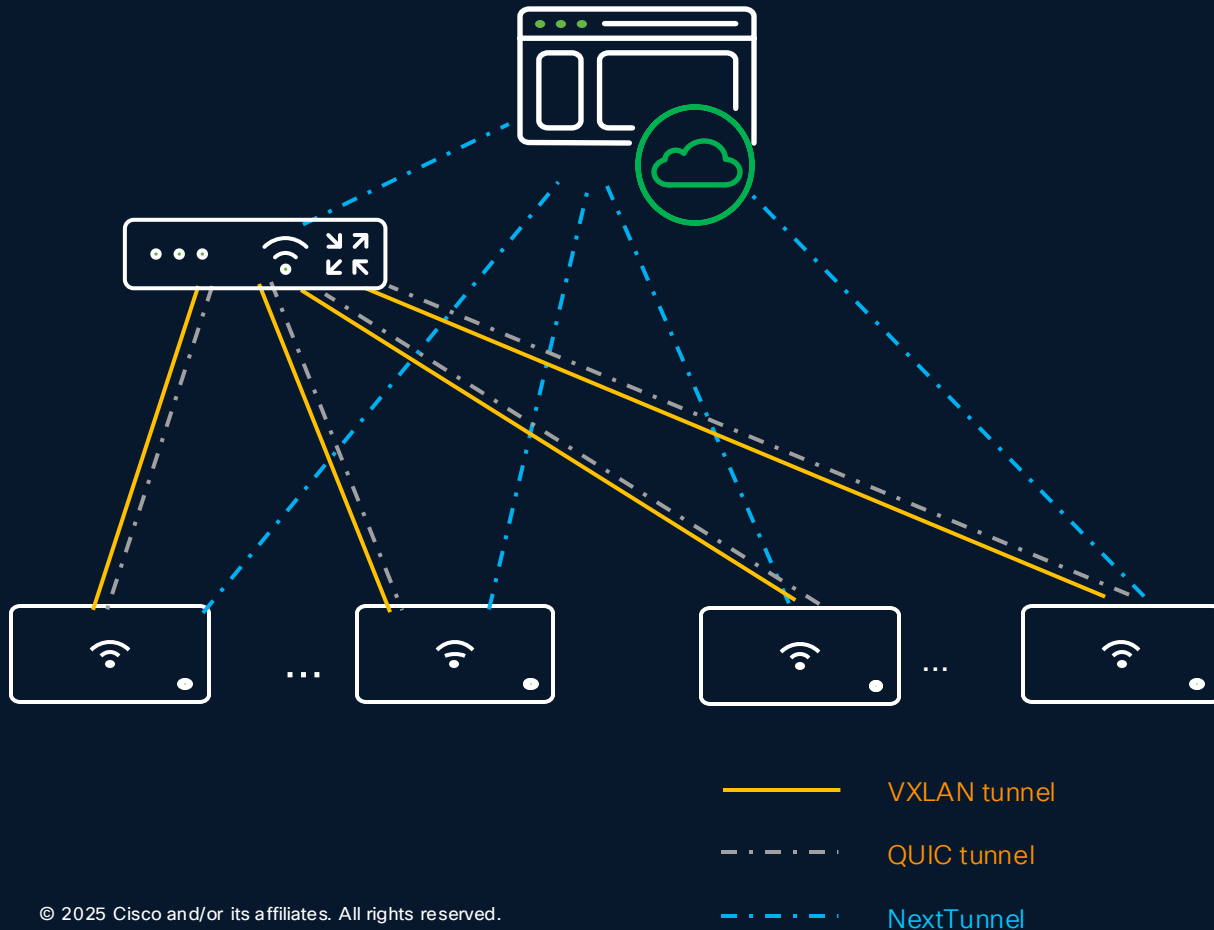
# Introducing The New Campus Gateway



AVAILABLE TODAY

## Cisco Campus Gateway

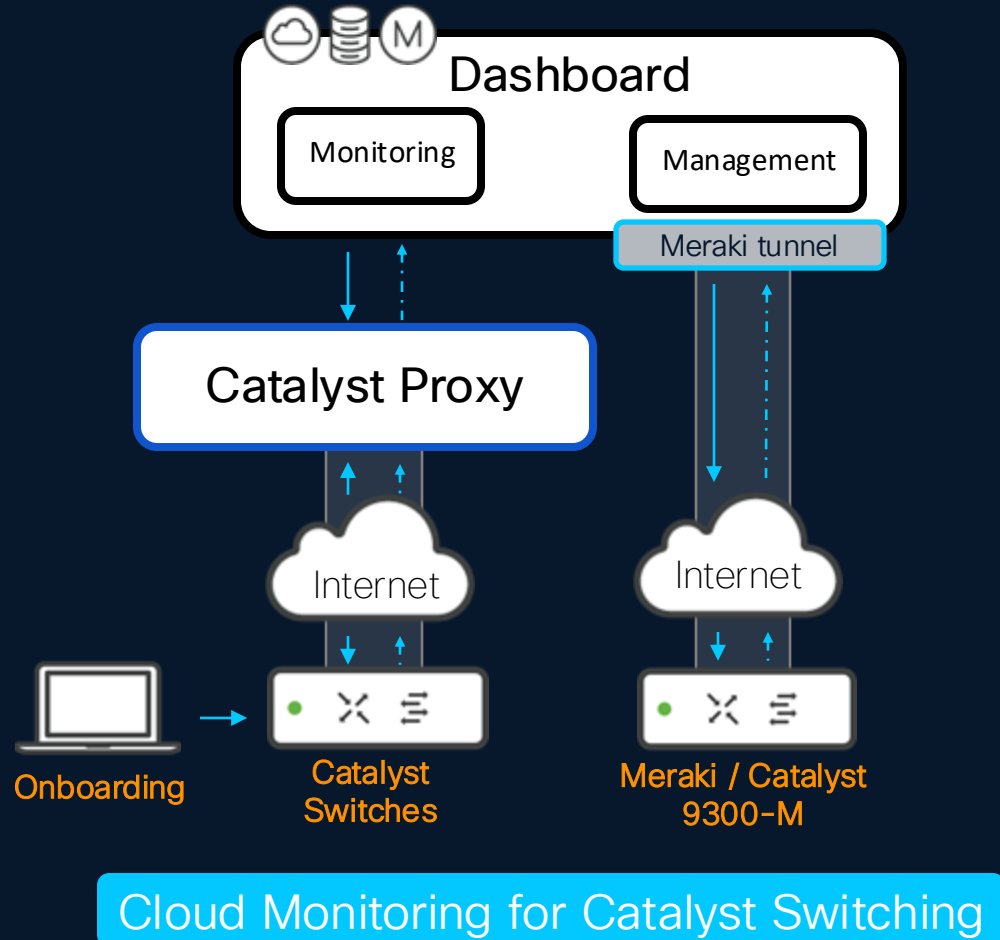
# Campus Gateway



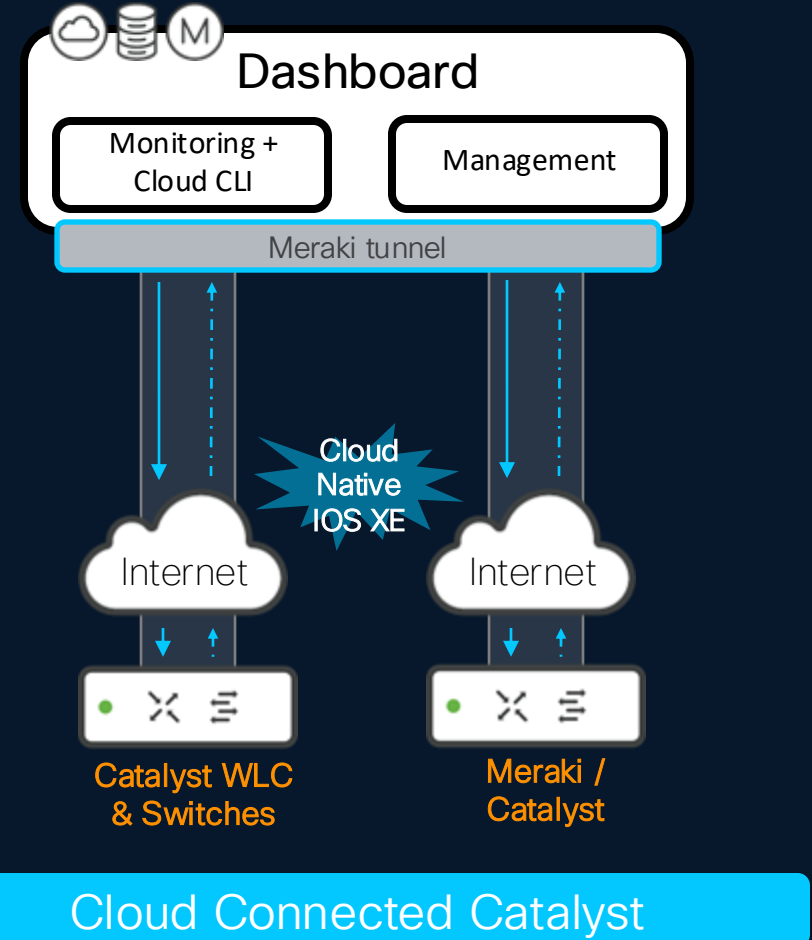
- Over the top wireless network
- No need for campus wide VLANs
- Seamless roaming across large wireless domains
- No need to configure trunk ports & native VLANs
- Centralized Wireless Services across 100s or 1000s of AP

# Platform Modernization *Switching*

# The Catalyst Cloud Journey



Cloud Evolution



# IOS-XE Cloud Management Support

✓ 17.18.1



One unified OS for cloud and on-prem



Options for migration or Day 0 cloud management



Cloud simplicity with advanced IOS XE features

Industry Leading Enterprise Switching Portfolio



Unified Cloud Platform

✓ C9200CX

✓ C9500

✓ C9350 Smart Switches

✓ C9200/L

✓ C9300/L/X/LM

✓ C9610 Smart Switches\*



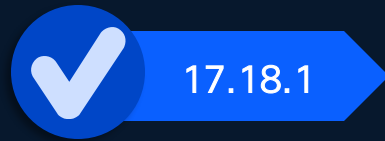
\*Future update



Cisco Meraki Dashboard

# Cloud-Managed Enterprise Switching

Configuration Source: **Cloud**



## Advanced Routing

Routed Ports

Loop-free Routed Access

VRF Lite

Scalable Macro Segmentation

BGP

Flexible, Open Dynamic Routing

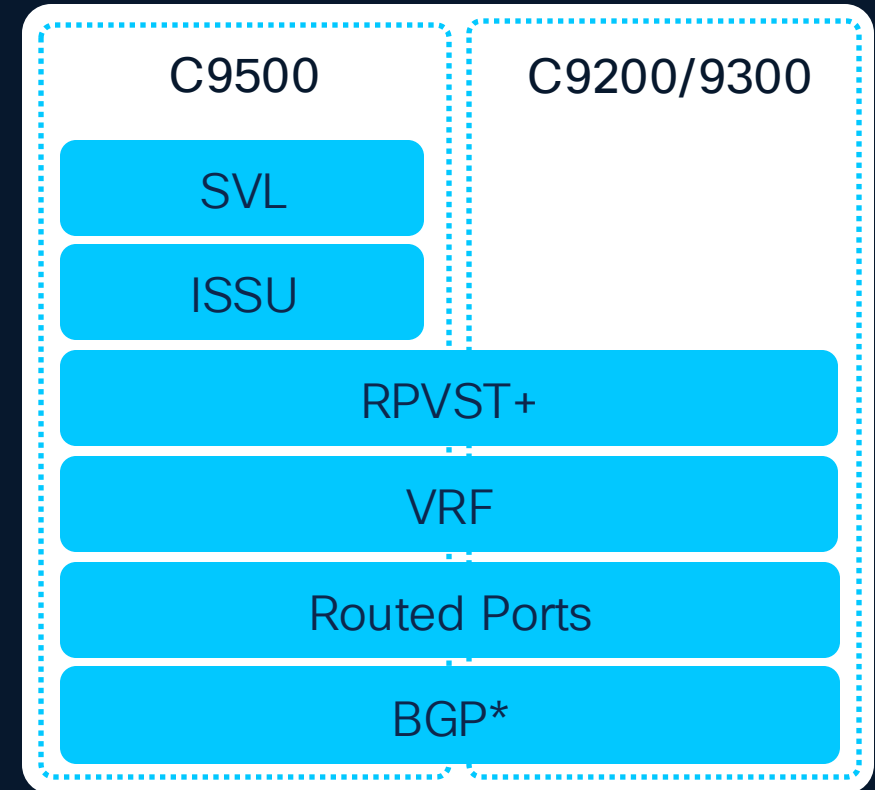
## High-Availability

Rapid PVST+

Enhanced L2 Loop Prevention

StackWise Virtual (SVL)  
ISSU

Sub-second downtime  
firmware upgrades



\*BGP supports on C9200CX, MS390, C9300 and C9500

# Maintain Operational Flexibility with Cloud Management

Configuration Source: **Cloud**



UNLOCK FULL CLOUD SIMPLICITY

Configurations are performed in the cloud and managed using the dashboard UI

Configuration Source: **Device**



RETAIN ADVANCED CONTROL

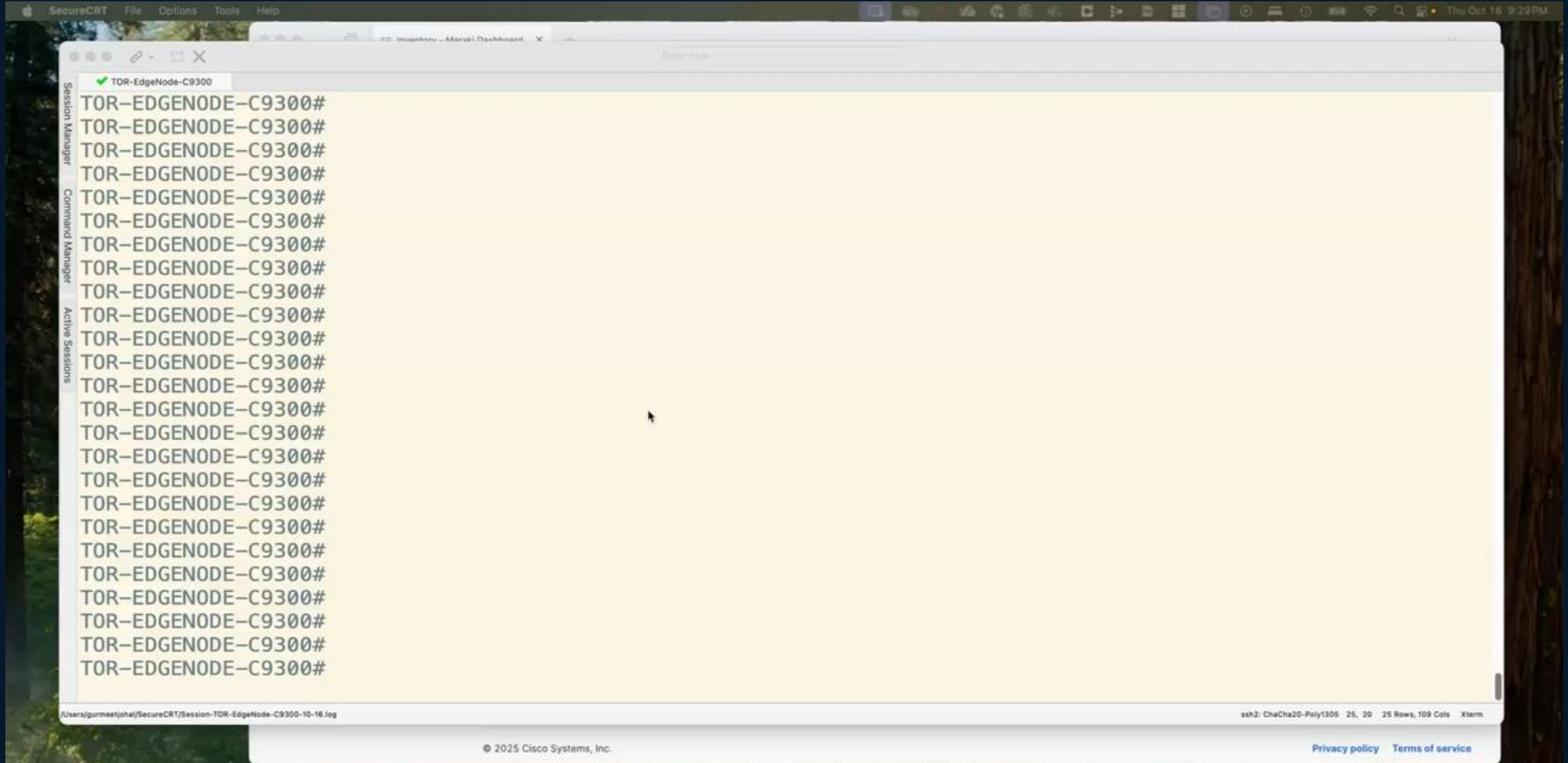
Configurations are managed via traditional methods and performed local to the device

FLEXIBLE OPTIONS FOR MANAGING YOUR DEVICES FROM THE CLOUD

Configuration Source: Cloud

# Demo

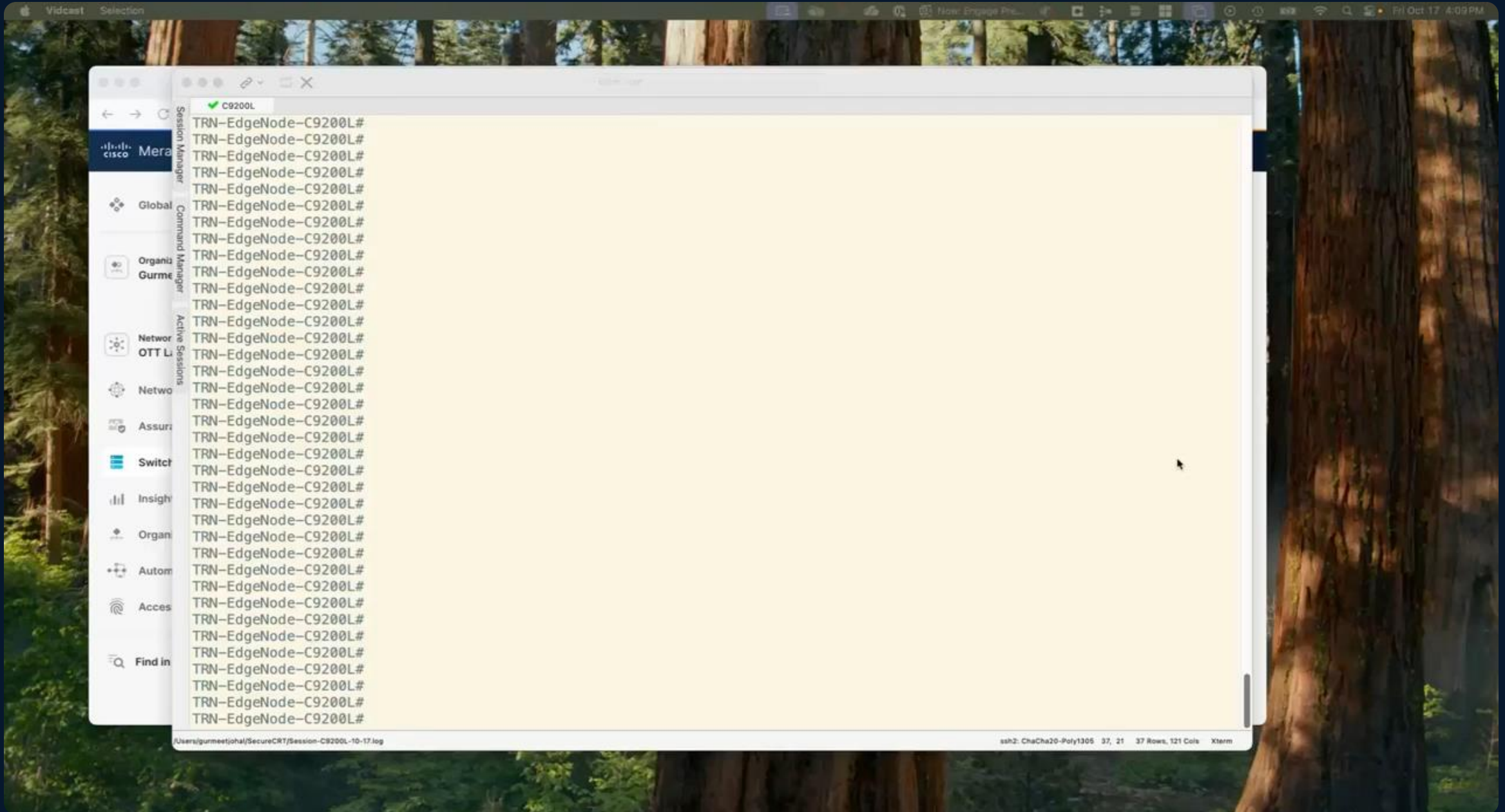
# Demo Onboarding 9300 into Dashboard – Cloud Mode



Configuration Source: Device

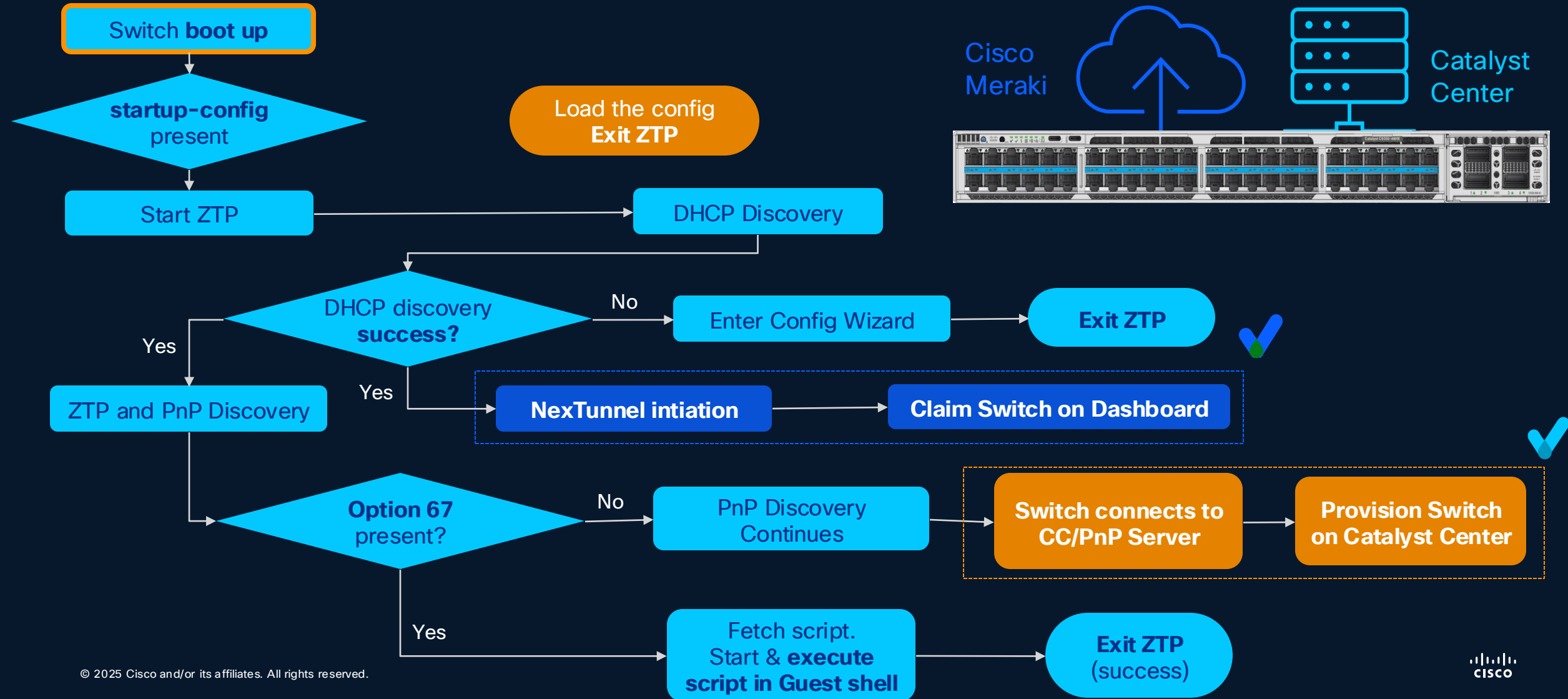
# Demo

# Demo Onboarding 9200L into Dashboard – Device Mode



# Unified Onboarding Experience

Effortless Onboarding of the Cisco C9350 Smart Switch



# Platform Modernization

## *Catalyst Center 3.1.5*

# Site Based RBAC

## Challenge/Pain point

- Lack of granular access to design/provision the network
- Lack of ability to limit & delimit access to specific product features

## Feature Capabilities

- Custom Roles provide access to Catalyst Center features
- Access Groups apply Custom Roles to Sites
- Provides granular access control down to Area, Building, or Floor

## Platform Dependency

- Catalyst Center 3.1.x

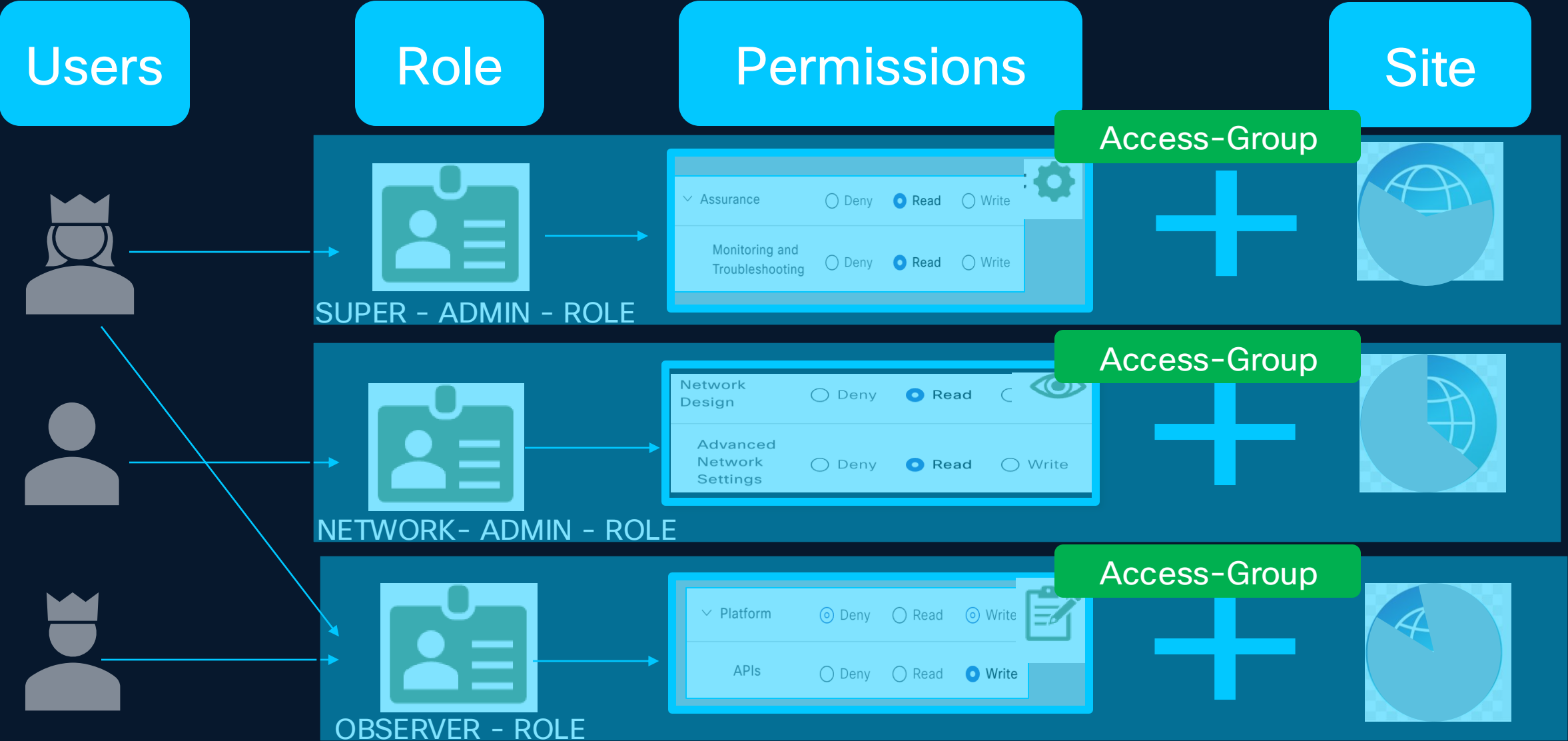
The image displays two screenshots of the Cisco Catalyst Center user interface for configuring Role-Based Access Control (RBAC).

The top screenshot shows the "Create/Edit a Role" page. The main heading is "Define the Access". A warning message states: "These permissions enable different capabilities in Catalyst Center, some of which are inter-dependent. Before making the selections, please ensure you understand the details of what each of these permissions allow. Click here to [Learn More](#)." Below this, a table defines the "Assurance-Only(v2)" role. The table has columns for Access, Permission, and Description.

Access	Permission	Description
> Assurance	<input type="radio"/> Deny <input type="radio"/> Read <input checked="" type="radio"/> Write	Assure consistent service levels with complete visibility across your network.
> Extensions	<input checked="" type="radio"/> Deny <input type="radio"/> Read <input type="radio"/> Write	Open platform for accessible intent-based workflows, data exchange, notifications, and third-party app integrations. <b>This permission set cannot be assigned to a site scoped(Non Global) Access Group if set to Read/Write</b>
> Network Design	<input checked="" type="radio"/> Deny <input checked="" type="radio"/> Read <input type="radio"/> Write	Configure network profiles and settings. Manage templates. Update the software image repository. Configure wireless maps for managing your sites and network devices.

The bottom screenshot shows the "System / Users & Roles" page. The left sidebar shows the navigation menu with "System" selected. The main content area is divided into two panels. The left panel, titled "Access Group", shows a list of "Access Groups (7)" with a search bar and buttons for "Edit Access Group" and "Delete Access Group". The right panel, titled "EMEA-Assurance", shows the configuration for the "Assurance-Only" role. It includes a "Description" field and a "Role\*" dropdown menu. A search hierarchy on the right shows the selection path: Global > APJC > EMEA > France > United Kingdom > North America.

# Site Based RBAC - Example



# Rule Based Compliance

- Custom rules and policies to detect any violations
- Can use string comparisons, regular expressions, and expression evaluations
- Applied to configs, show commands, and device properties
- Each rule can have variables, multiple conditions, and configurable violation messages and severity level

Condition

Scope

Device command outputs

Show command \* ⓘ

show install summary

☐ Parse as blocks ⓘ

Operator ⓘ

Contains the string

Value \* ⓘ

CSCwn27950

Action

Match

Action

Do not raise a violation

Does not match

Action

Raise a violation

Violation severity

⚠ Minor

Custom violation message (optional) ⓘ

The device may reload unexpectedly because the required fixed SMU is not activated.

# 9800 WLC - Per Device Configuration

Per-Device Configuration: create, edit, clone, and delete the device-level configurations for a WLC

All Devices / ar9800.adamlab.cisco.com

ar9800.adamlab.cisco.com

Manage 1 APs

Run Commands

View 360

Last Updated: 3 hours 12 minutes ago

Reachable

Managed

IP Address: 10.10.21.200

Device Model: Cisco Catalyst 9800-CL Wireless Controller for Cloud

Device Role: ACCESS

Uptime: 185 days 11 hrs 18 mins

Site: Global/SYD/north sydney

SECURITY

Advisories

FIELD NOTICES

Field Notices

Potential Field Notices

CONFIGURATION BETA

WLAN

RF

AP Join

Flex Profiles

Tags

Security

Global Radio Configurations

Global Wireless Configurations

MDNS

EoGRE

Layer 2

Network Settings

Hardware

Device Type

Wireless Controller

Series

Cisco Catalyst 9800 Wireless Controllers for Cloud

Platform

C9800-CL-K9

Serial Number

9MZF69D31J

MAC Address

00:50:56:a0:66:8f

Vendor

Cisco

Software

Image

C9800-CL-universalk9.17.14.01.SPA.bin

Version

17.14.1

Operational Summary

Uptime

185 days 11 hrs 18 mins

Provision Status

Success

Last Provisioned

Jul 16, 2024 8:38 PM

Resync Interval

24 hours

Last Synced

3 hours ago

Cisco ISE Integration Status

Not Applicable

Private Beta: 2.3.7.6  
Beta 2.3.7.9  
3.1.x

# 9800 WLC – Per Device Configuration

All Devices / ar9800.adamlab.cisco.com

ar9800.adamlab.cisco.com

Manage 1 APs

Run Commands

View 360

Last Updated: 3 hours 12 minutes ago ⓘ ↻

✔ Reachable | ✔ Managed | IP Address: 10.10.21.200 | Device Model: Cisco Catalyst 9800-CL Wireless Controller for Cloud | Device Role: ACCESS | Uptime: 185 days 11 hrs 18 mins | Site: Global/SYD/north sydney

CONFIGURATION

WLAN ▾

WLAN Profiles

Policy Profiles

Remote LAN Profiles

Remote LAN Policies

802.11be Profiles

RF >

AP Join >

Flex Profiles

Tags >

Security >

Global Radio Configurations >

Global Wireless Configurations >

MDNS

EoGRE

Layer 2 >


Policy Profiles (11) + Add Clone from another WLC

🔍 Search for Policy Profile Name or Description

0 Selected Actions ▾

<input type="checkbox"/>	Policy Profile Name	Status	Description	Policy Tags	AP Configuration Sets
<input type="checkbox"/>	<a href="#">Corp_PDC_profile</a>	✔	Corp_PDC_profile	0	0
<input type="checkbox"/>	<a href="#">default-policy-profile</a>	✔	default policy profile	0	0
<input type="checkbox"/>	<a href="#">TME-flex-645_profile</a>	✔	TME-flex-645_profile	2	2
<input type="checkbox"/>	<a href="#">Internet_Policy</a>	✔	-	1	0
<input type="checkbox"/>	<a href="#">client_policy</a>	✔	-	13	0
<input type="checkbox"/>	<a href="#">TME-flex-644_profile</a>	✔	TME-flex-644_profile	3	2
<input type="checkbox"/>	<a href="#">CiscoSensorProvisioning</a>	✔	Network assurance sensor pro...	1	0
<input type="checkbox"/>	<a href="#">Ent-Blr_profile</a>	✔	Ent-Blr_profile	1	0

© 2025 Cisco and/or its affiliates. All rights reserved.

 CISCO

# New Features and Key Enhancements – 3.1.x



## Platform

- Catalyst Center on Azure
- Site Based RBAC
- Contextual RCA for Support bundle
- CCGM Updates



## NetOps

- Brownfield device onboarding workflow
- New SWIM Dashboard
- Rule-Based Compliance
- Campus Network Automation
- AP priming for C9K WLC
- Campus Automation - Industrial Configuration
- App Hosting for IE
- REP topology view for fabric and non-fabric
- Per Device Config – AP configuration
- Cloning profiles across multiple WLC
- PRP configuration support



## AIOps

- Energy management dashboard
- Install TE agent workflow
- Enhanced visibility into Cisco ISE authentication failures
- Event Analytics AI Outlier
- Service Now Bidirectional Integration



## SecOps

- Security Service Insertion
- Pub-Sub for brownfield deployments and migration-Beta
- Allowed VLAN, add a native VLAN on a TRUNK link
- Voice VLAN template for user ports
- SDA Fabric can experience outages caused by SSDP
- Overlapping IP Pools

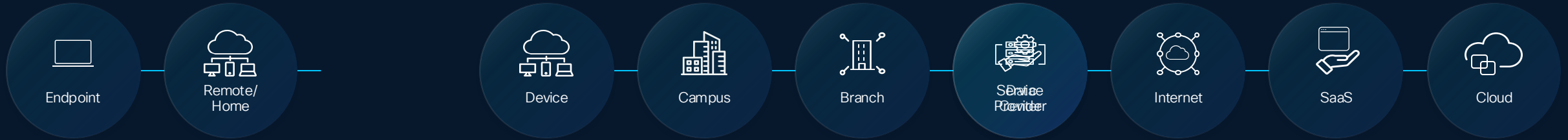


## DevOps

- New APIs
- API enhancements
- New reports

# Assurance

# Delivering Multilayered Assurance



Experiences now span mobile, cloud, and edge—visibility must follow

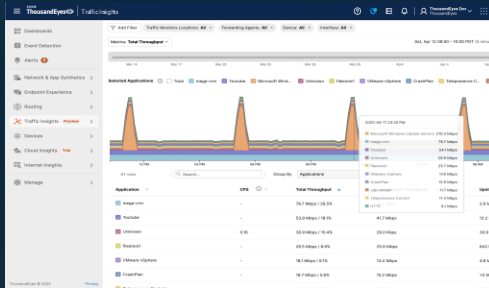
**Measure** where  
it matters

**See** every part  
of the path

**Contextualize**  
the source

# Deep Visibility from Campus to Mobile to Industrial

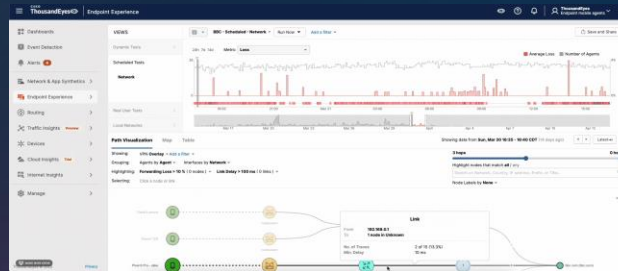
## ThousandEyes Traffic Insights



Smarter visibility and planning  
for enterprise networks

GA | JUNE

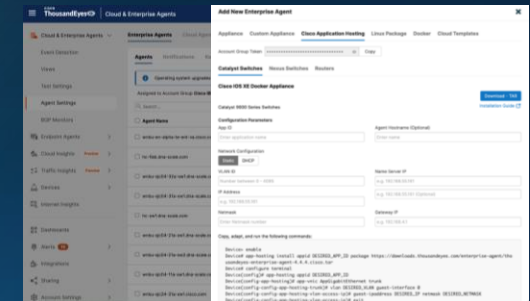
## ThousandEyes Mobile endpoints



Extends Assurance to  
mobile endpoints

BETA | NOW

## ThousandEyes Industrial Devices

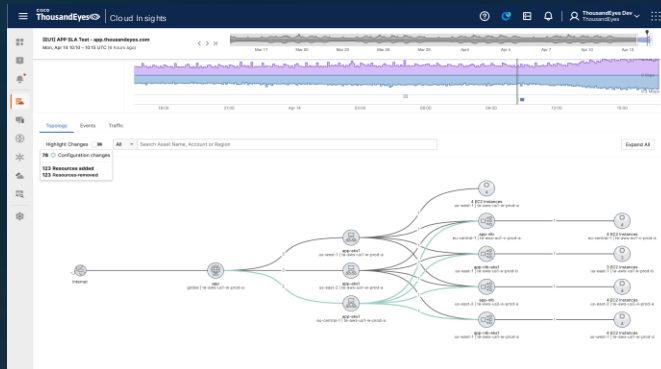


Assurance for the industry's  
largest Industrial IoT portfolio

GA | JULY

# New ThousandEyes Innovations

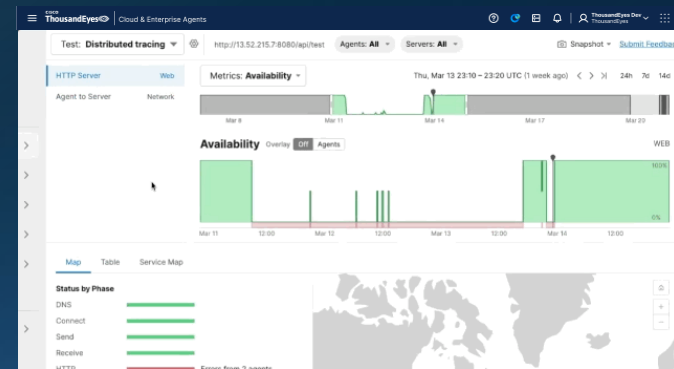
## ThousandEyes Cloud Insights



Deeper visibility into Microsoft Azure (new) and AWS environments

GA | JUNE

## ThousandEyes + Splunk



End-to-end app to network assurance

GA | JUNE

AVAILABLE | NOW

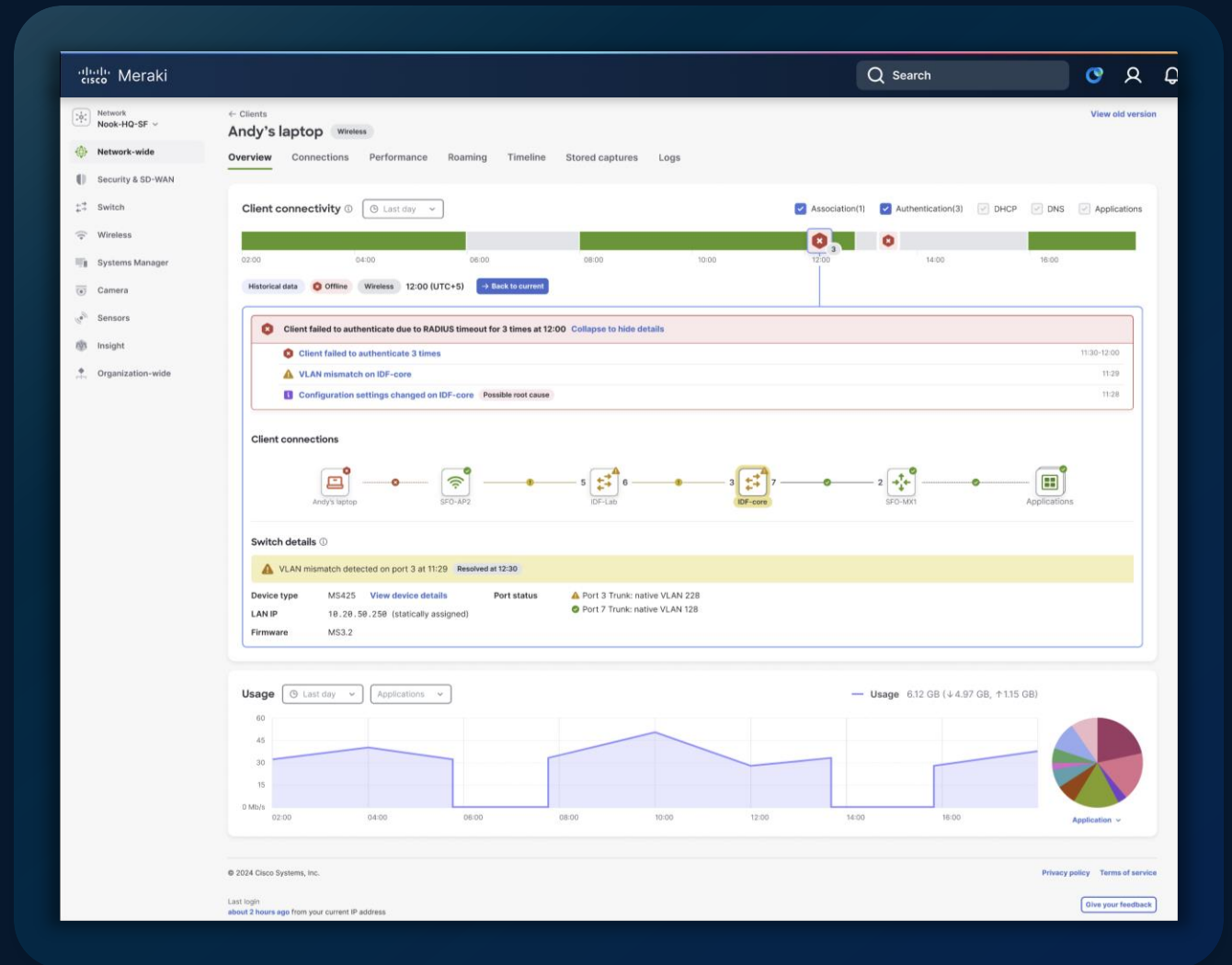
# Assurance Across Every Digital Experience

Deep visibility across both owned and unowned networks

AI-powered insights surface experience-impacting issues instantly

Closed-loop workflows trigger automated remediation

AI Assistant accelerates root cause analysis end-to-end



# Predictive Path Recommendations

Proactive guidance  
for maintaining  
network stability

Optimize WAN  
performance

Generate long-term  
recommendations for  
network optimization

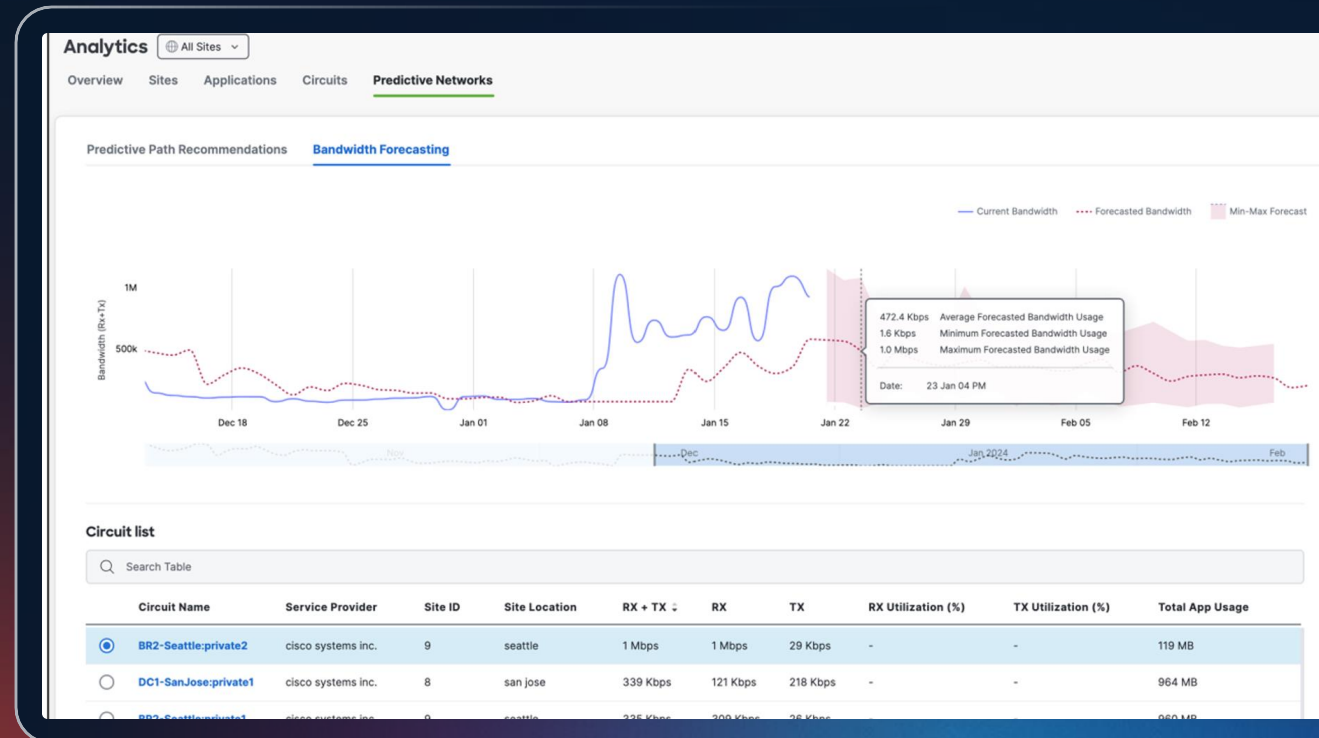


AVAILABLE NOW

# Bandwidth Forecasting

Monitor usage trends for capacity planning

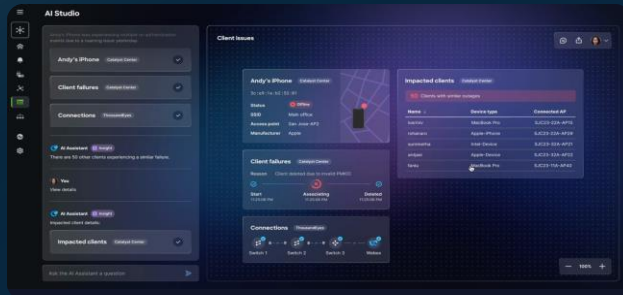
Get a better understanding of growth trends, seasonality, surge, min/max band, and performance



AVAILABLE NOW

# AgenticOps Lineup

ALPHA



AI Canvas

Cross-domain collaborative troubleshooting

GA/BETA



cisco  
AI Assistant

AI Assistant

Accelerate network operations

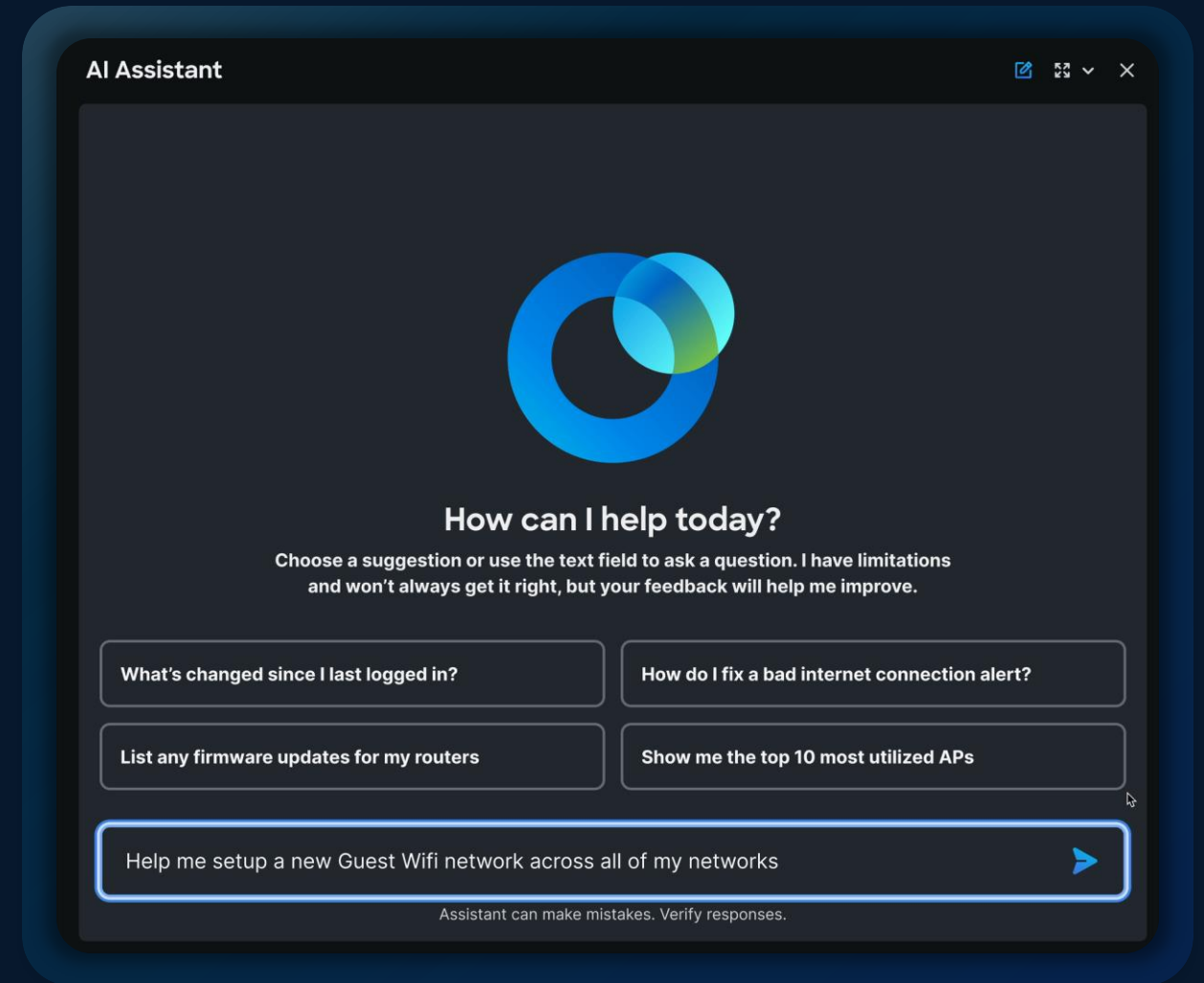
POWERED BY DEEP NETWORK MODEL

# AI Assistant Powered Automated Workflow for Wi-Fi Setup

Creates secure SSIDs with 802.11X and RADIUS

One prompt updates NAC across Meraki and ISE

Automates end-to-end access control



# AI Assistant Powered RCA and Resolution for Issues

Finds root cause—not just the alert

Provides full stack visibility

Pinpoints the issue and guides the fix



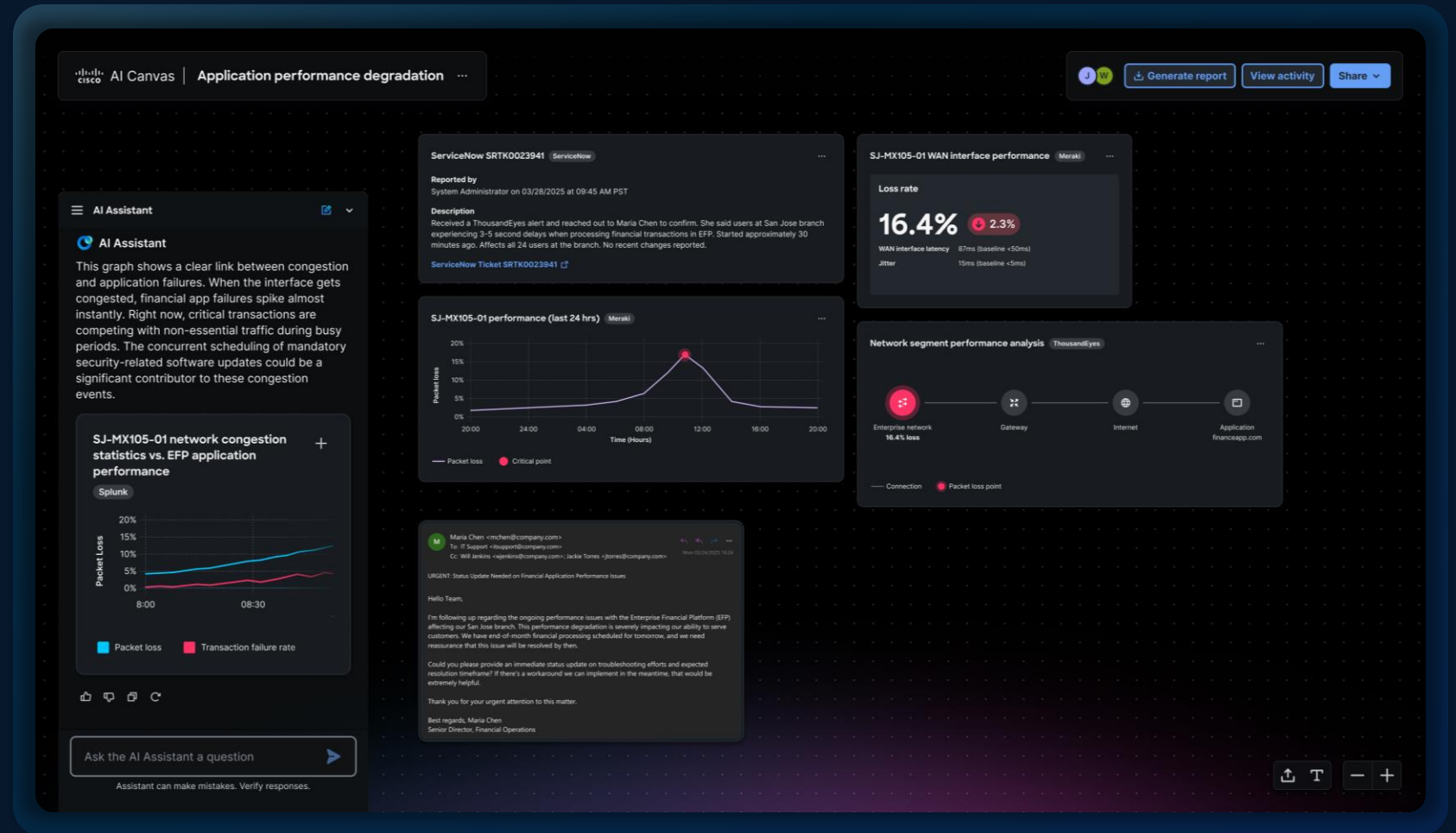
ALPHA

# AI Canvas

Troubleshooting and execution across multiple domains

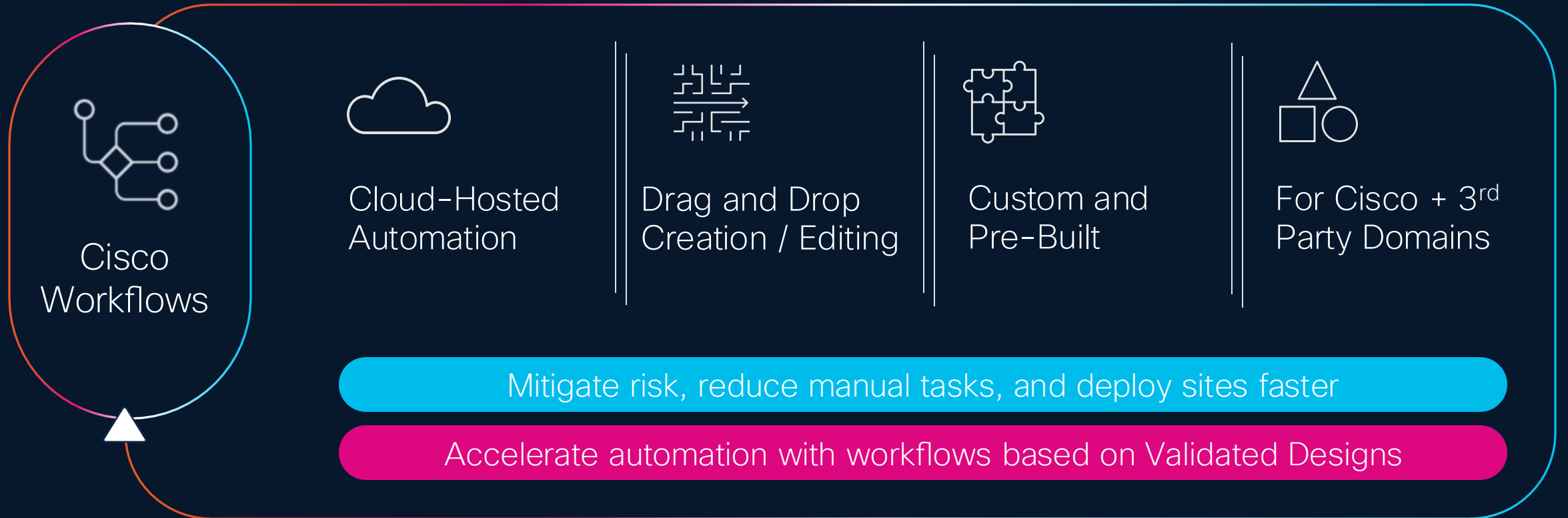
Collaboration across multiple users (NetOps, SecOps and execs)

Built on the foundation of the Deep Network Model

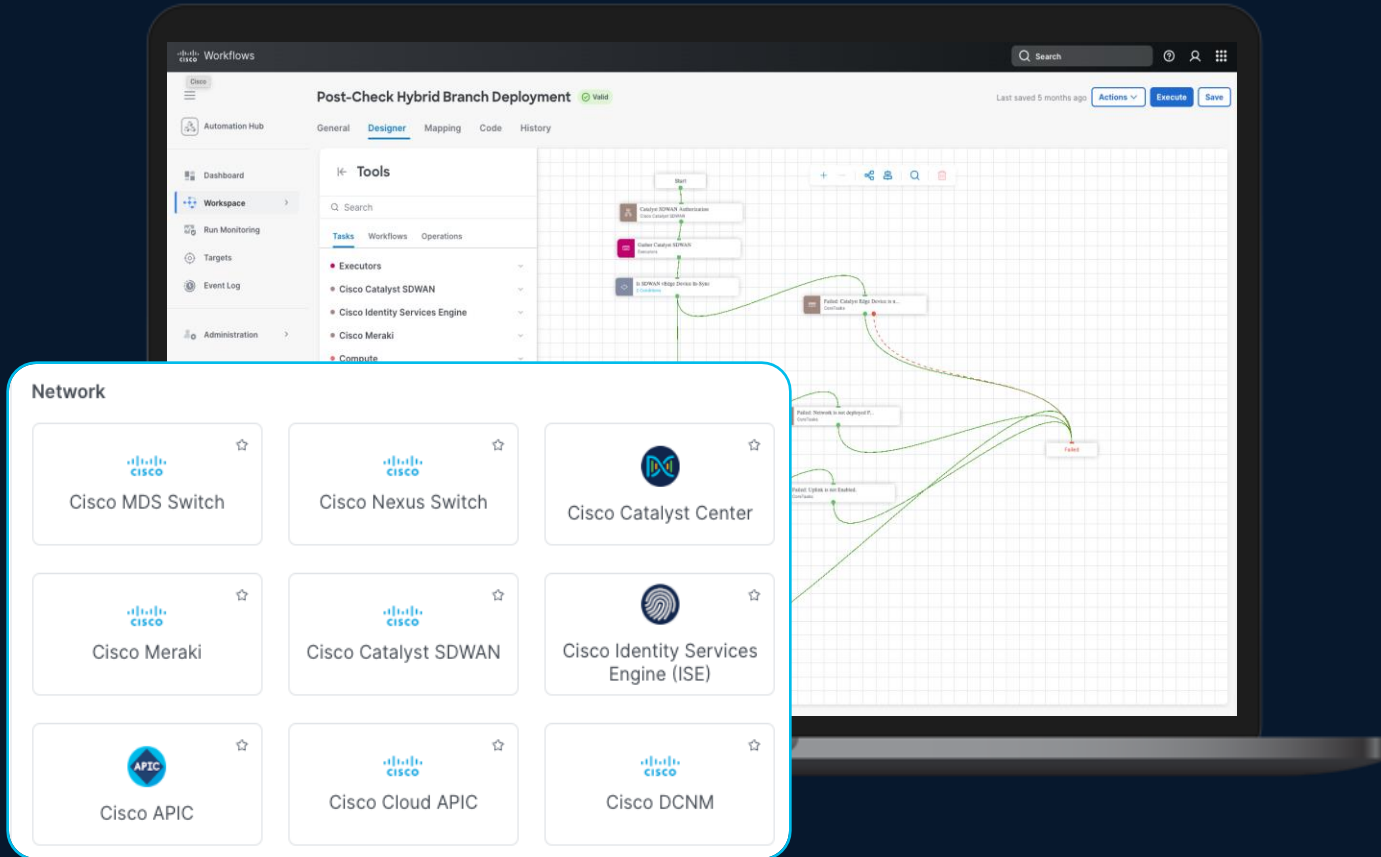


# Automation

# Introducing Cisco Workflows



# Central Automation for Cisco and Third-Party Applications



Automate tasks across Catalyst Center and SD-WAN, Meraki, ISE, ACI, Nexus, and more.



Integrate third-party applications such as ServiceNow into automation templates with Cisco domains.



Connect cloud and on-premise controllers to extend automation across the Cisco portfolio and beyond.

Cisco Workflows

# Demo

Global Overview

Organization  
BXB DMZ MikePod 1

Network  
Campus Fabric

Cloud

Network-wide

Assurance

Switching

Wireless

Insight

Organization

Automation

Access Manager New

Find in Menu

Configuration overview

SSIDs Showing 15 of 15 SSIDs. [Hide disabled SSIDs.](#)

	Campus Fabric - wireless WiFi	Unconfigured SSID 1	Unconfigured SSID 2	Unconfigured SSID 4	Unconfigured SSID 5	Unconfigured SSID 6	Unconfigured SSID 7	Unconfigured SSID 8
Enabled	<input type="button" value="enabled"/>	<input type="button" value="disabled"/>	<input type="button" value="disabled"/>	<input type="button" value="enabled"/>	<input type="button" value="enabled"/>	<input type="button" value="enabled"/>	<input type="button" value="enabled"/>	<input type="button" value="enabled"/>
Name	<a href="#">rename</a>	<a href="#">rename</a>	<a href="#">rename</a>	<a href="#">rename</a>	<a href="#">rename</a>	<a href="#">rename</a>	<a href="#">rename</a>	<a href="#">rename</a>
SSID Admins	<input type="button" value="access disabled"/>	<input type="button" value="access disabled"/>	<input type="button" value="access disabled"/>	<input type="button" value="access disabled"/>	<input type="button" value="access disabled"/>	<input type="button" value="access disabled"/>	<input type="button" value="access disabled"/>	<input type="button" value="access disabled"/>
Access control	<a href="#">edit settings</a>	<a href="#">edit settings</a>	<a href="#">edit settings</a>	<a href="#">edit settings</a>	<a href="#">edit settings</a>	<a href="#">edit settings</a>	<a href="#">edit settings</a>	<a href="#">edit settings</a>
Encryption	PSK (WPA2)	PSK (WPA3-SAE)	PSK (WPA3-SAE)	PSK (WPA3-SAE)	PSK (WPA3-SAE)	PSK (WPA3-SAE)	PSK (WPA3-SAE)	PSK (WPA3-SAE)
Sign-on method	None	None	None	Click-through splash page	Click-through splash page	Click-through splash page	Click-through splash page	Click-through splash page
Bandwidth limit	unlimited	unlimited	unlimited	unlimited	unlimited	unlimited	unlimited	unlimited
Client IP assignment	Meraki DHCP	Local LAN	Local LAN	Local LAN	Local LAN	Local LAN	Local LAN	Local LAN
Clients blocked from using LAN	yes	no	no	no	no	no	no	no
Wired clients are part of Wi-Fi network	no	no	no	no	no	no	no	no
VLAN tag	n/a	100	100	104	31	31	30	30
Tunnel	Disabled	Disabled	Disabled	Disabled	Disabled	Disabled	Disabled	Disabled
<a href="#">Splash page</a>	no	no	no	yes	yes	yes	yes	yes
Splash page enabled	no	no	no	yes	yes	yes	yes	yes
Splash theme	n/a	n/a	n/a	n/a	n/a	n/a	n/a	n/a

or [cancel](#)

(Please allow 1-2 minutes for changes to take effect.)

# Network Automation for Cisco and Third-Party Applications



Automate tasks across Catalyst Center and SD-WAN, Meraki, ISE, ACI, Nexus, and more.

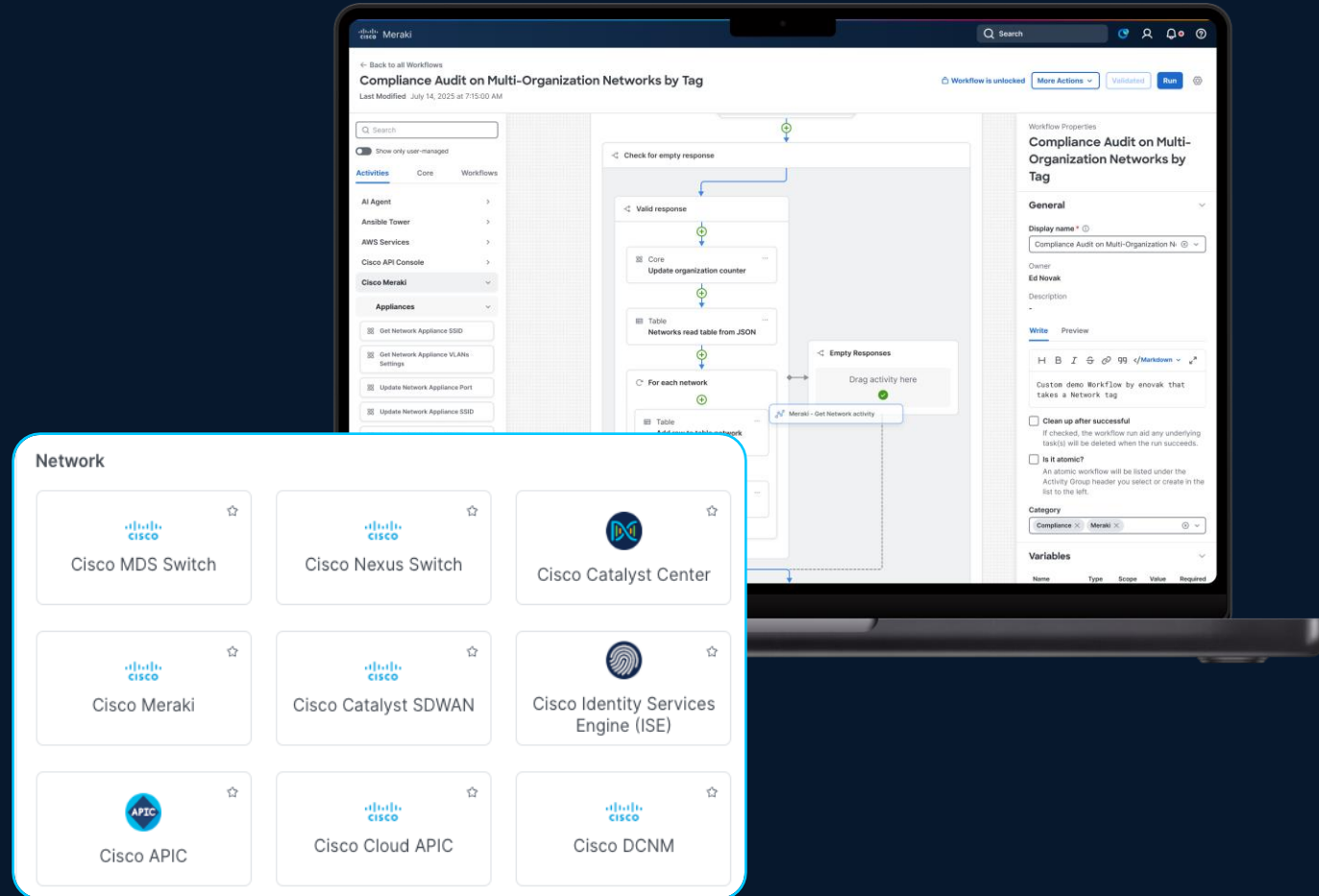


Integrate third-party applications such as ServiceNow and Jira with Cisco domains.



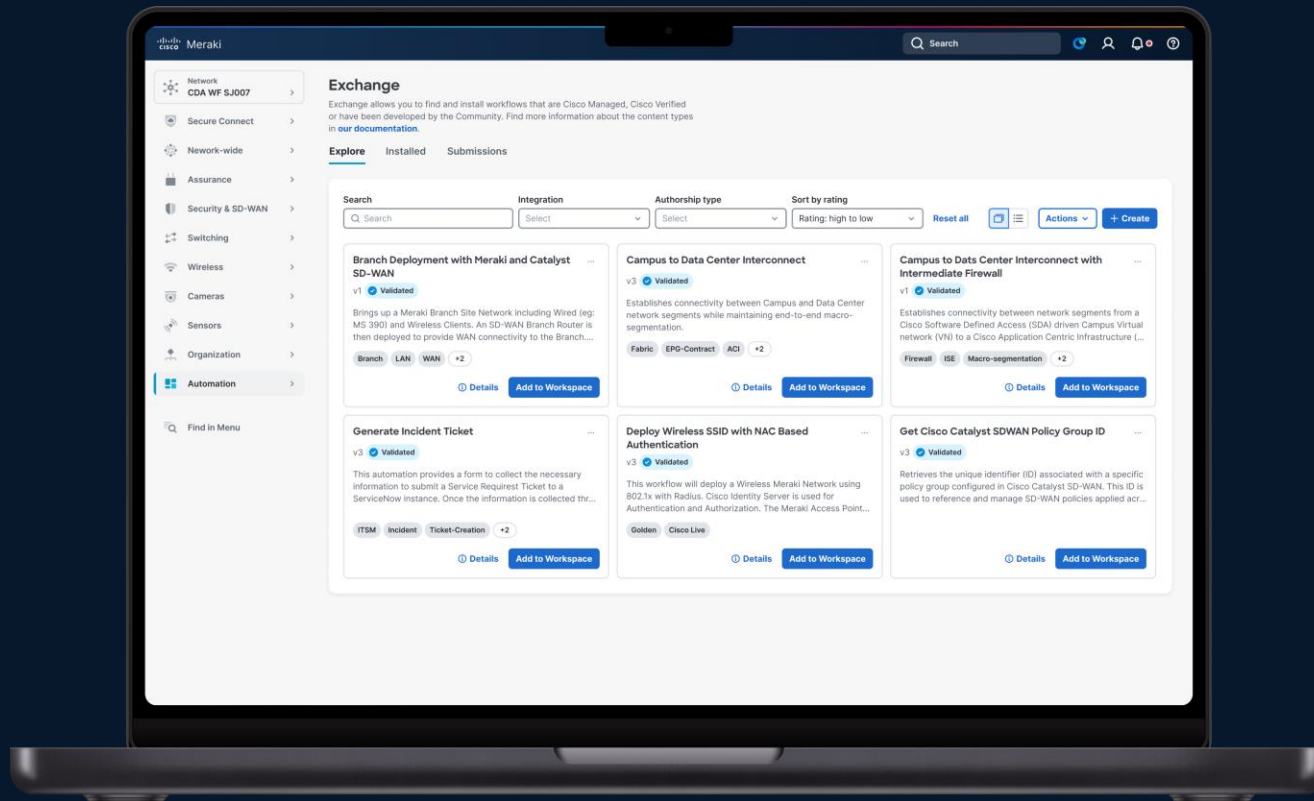
Connect cloud and on-premise controllers to extend automation across the Cisco portfolio and beyond.

# Drag and Drop Your Automation



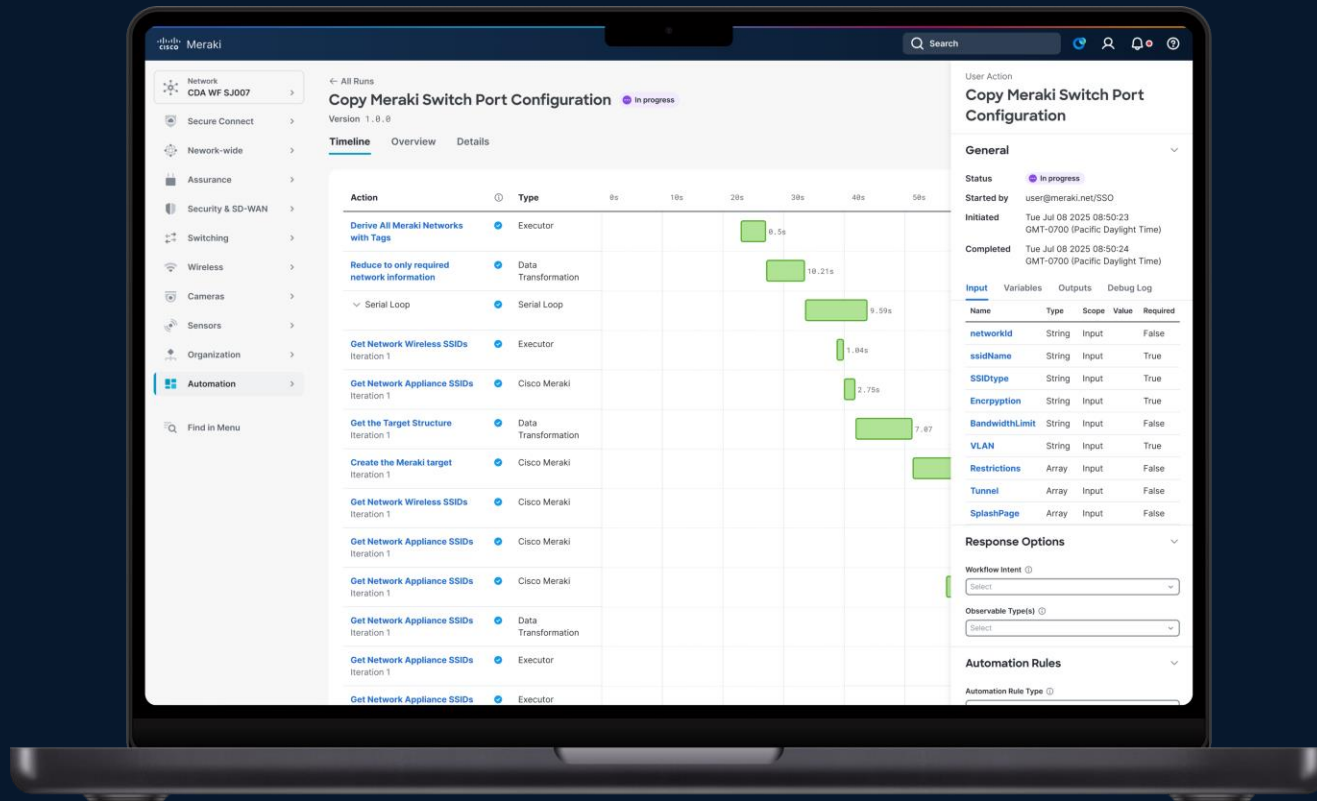
Bring your automation design to life with an intuitive drag-and-drop interface. Adapters provide automation capabilities across the Cisco portfolio. Each adapter contains a range of validated actions that can be automated across respective controllers.

# Browse the Exchange



Workflows features an exchange of pre-made automations that solve common use cases. These automations can be run as is or easily customized in the drag-and-drop workflow editor. We frequently update our library with new, free automations.

# Monitor Progress for Active Runs



Get insight into active automations from Workflows in the Automation tab in the Cisco Meraki dashboard. Monitor runs, see statuses, identify targets, troubleshoot errors, and keep logs for compliance and visibility.

# Challenges for Network and Security Teams



**Error-prone processes**



**Time-consuming tasks**



**Talent and labor shortages**

Q&A

# Other Sessions You Might Like: (Space Permitting)

2:15pm

From Edge to Core

Securing Campus Networks with  
Intelligent AI-Ready Switches.

Nigel Gocan

3:30pm

The Power of End-to-End  
Assurance

Learn how ThousandEyes  
integrates seamlessly with key  
Cisco technologies

Bill Donoghue

2:15pm

Security for AI

Addressing threats with  
AI Defense

Rob Barton

**Thank you**



