

Future of Agentic Operations Driven by Cisco AI Canvas

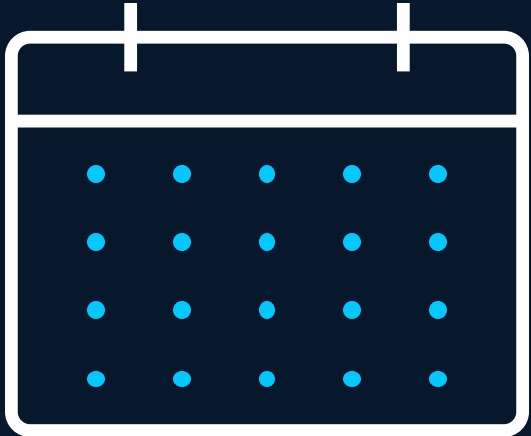
Robert Barton, Distinguished Technical Marketing Engineer



Today's IT Operations Run on **Fragmented Stacks**

Why? Because Your Data Is Scattered Across **Disconnected Silos**





Critical problems that should be resolved in minutes **take days**

The background is a deep blue gradient. A horizontal band of glowing, wavy particle trails in shades of light blue and cyan cuts across the middle. These trails are composed of many small dots and crosshairs, giving a sense of motion and digital data. There are also several out-of-focus circular light spots (bokeh) scattered throughout the background, particularly in the upper and lower portions.

The era of **Agentic AI** is here

A person with short blonde hair, seen from behind, stands in the center of the frame. They are wearing a dark, long-sleeved garment. The background is split: the left side is dark with white digital rain (code) falling, and the right side is a warm, golden-brown color with a wireframe head structure on the far right. The person's shadow is cast onto the golden-brown background.

Chat Bots

Agentic AI

AgenticOps



AI Ops

AgenticOps

Cross-domain

Multiplayer

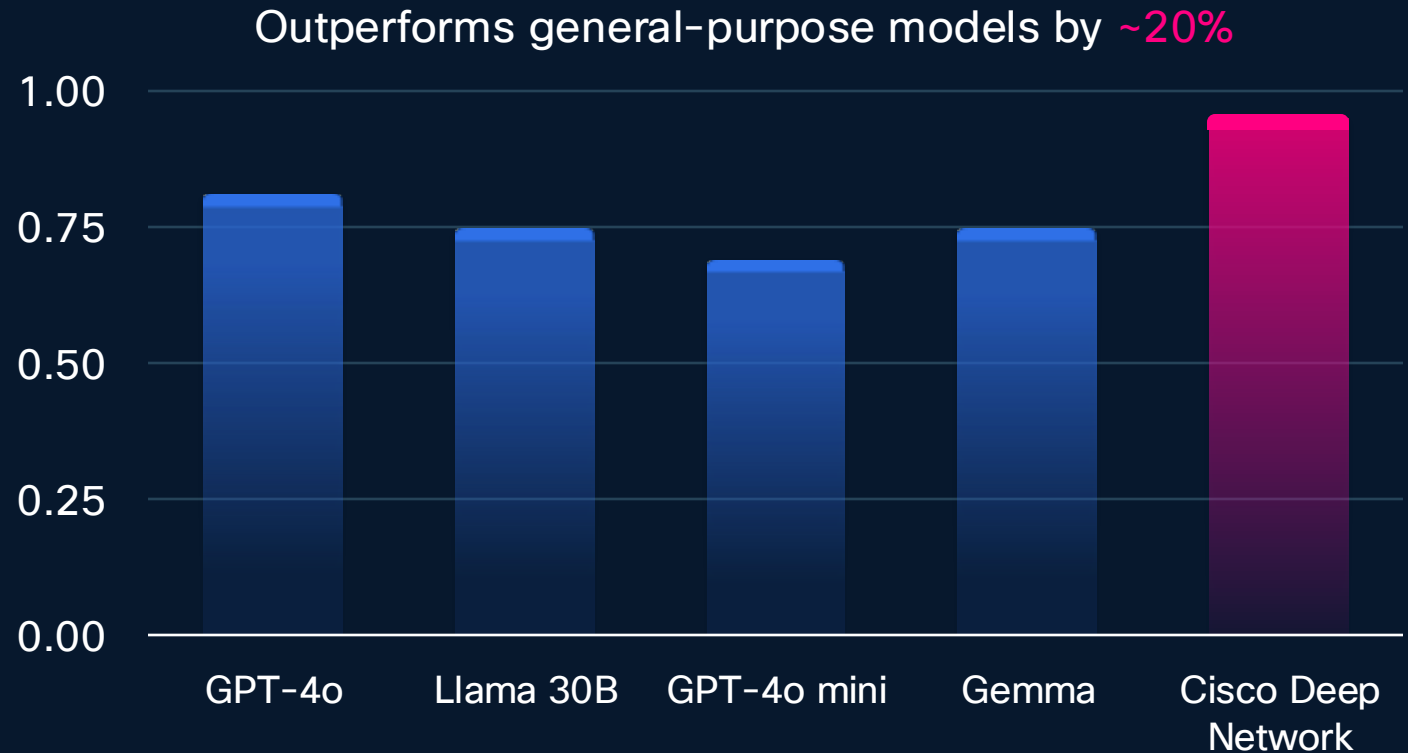
Purpose-built models

Introducing

The Cisco Deep Network Model

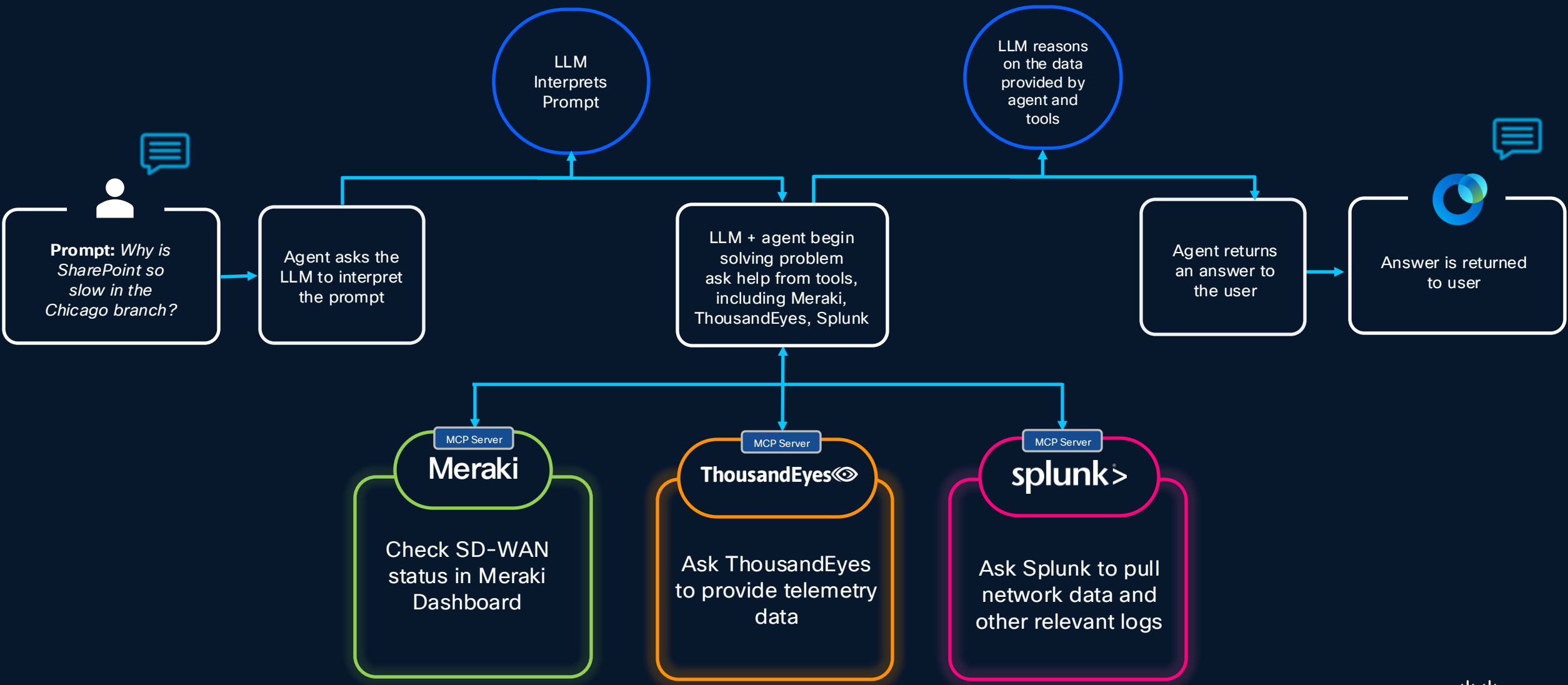
Purpose-built for networking, expert accuracy

- More precise reasoning for troubleshooting, configuration, and automation
- Fine-tuned on 40+ years of expertise and expert-vetted for accuracy
- Evolves with live telemetry and real-world Cisco TAC and CX insights



Accuracy on CCIE-style multiple choice questions (590-question benchmark), May 2025

An AgenticOps Example



Introducing

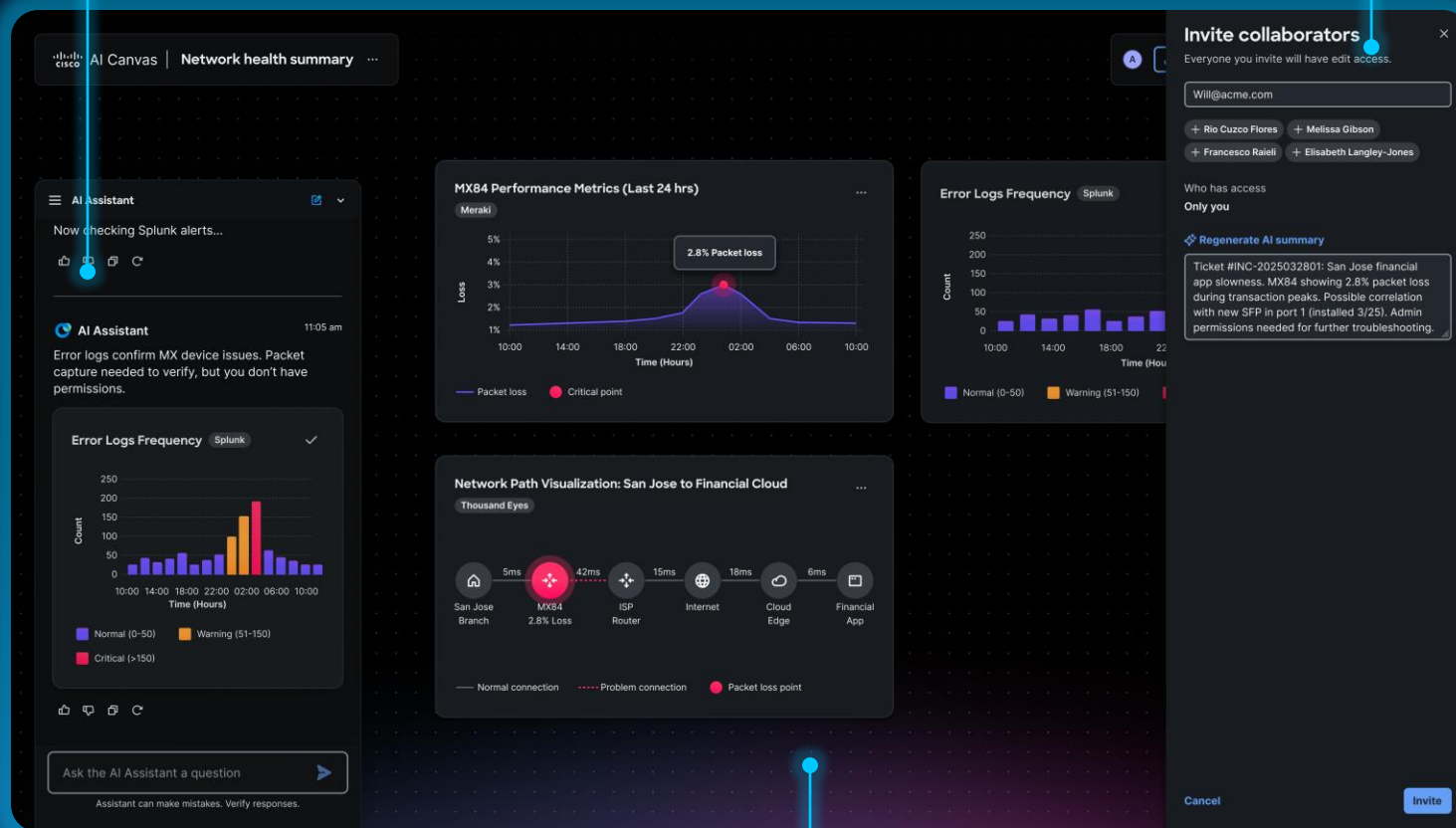
Cisco AI Canvas

A reimagined user interface for human/agent interaction

- Collaboration across multiple users (NetOps, SecOps and execs)
- Built on the intelligence of the Deep Network Model
- Troubleshooting and execution across multiple domains

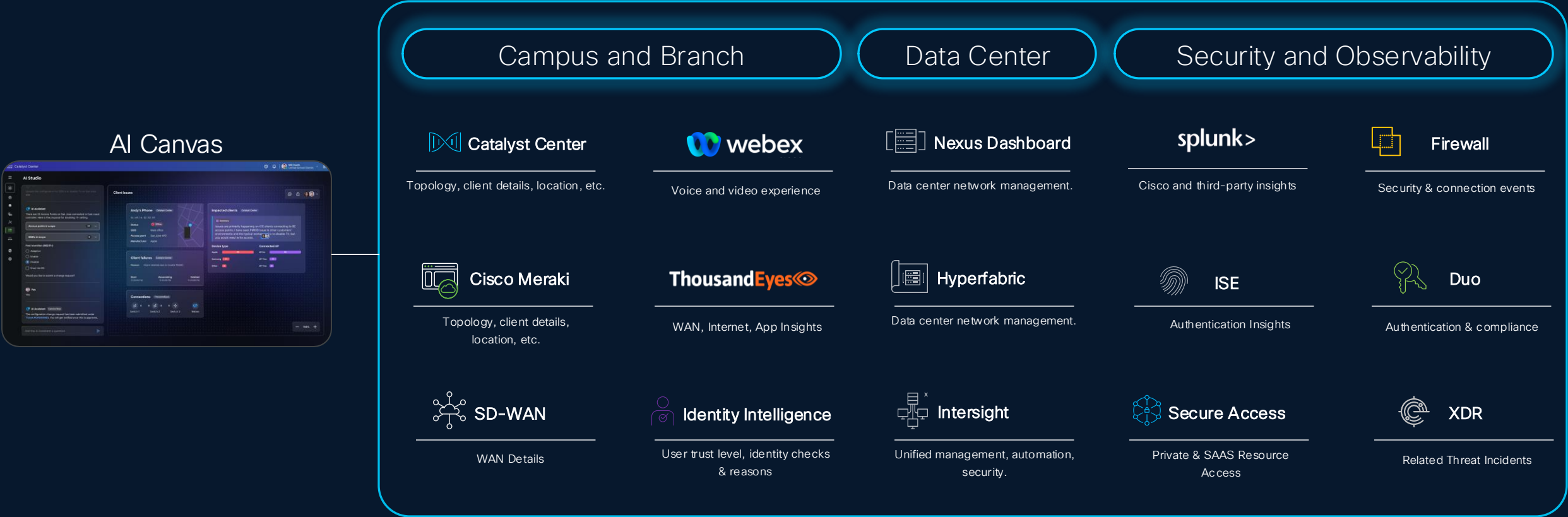
AI Assistant

Users



Shared Workspace

AgenticOps Across IT and SecOps



Note: Products listed above are examples, not a comprehensive list of planned integrations.

AI Canvas Use Cases Coming Soon . . .



App Performance

- Analyze issues affecting app experience and availability
- Examples: App server, internet, wan, local network, etc.

“Why can’t I access Office 365?”



Client Onboarding

- Troubleshoot why a client cannot join the network
- Examples: Auth failures, DHCP timeouts, etc.

“My laptop can’t join the network”



Wireless Experience

- Assess the full Wi-Fi experience from device to RF
- Examples: AP health, RF, performance, roaming, etc.

“Why is Wi-Fi dropping on floor 2?”



Wired Experience

- Triage LAN issues impacting reliability & performance
- Examples: Cabling, bandwidth, ports, etc.

“Why is my wired connection slow?”

Cisco AI Canvas Demo

Thank you



