

Delivering on the Promise of the AI-Ready Campus & Branch: Smart, Secure, and Scalable Networks

Matt Chrosniak, Solutions Engineer



Every Major Technology Disruption Changed the Enterprise Network



Internet



Mobility



Cloud



AI Is the Biggest Disruption We Have Seen Yet



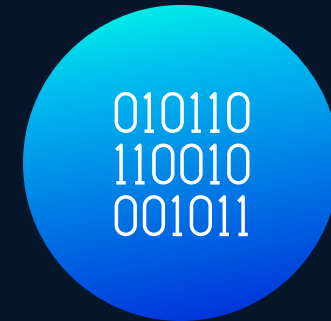
Internet



Mobility



Cloud



AI



AI Is Bringing Challenges

Proliferation of Agents

1,000s

AI Agents per
enterprise expected

More security risks than ever

#1 risk

AI-enhanced
malicious attacks

Profound skills shortage

64%

of orgs face IT skills
shortage by 2026

The background is a dark, futuristic cityscape at night, with numerous skyscrapers and buildings illuminated with various colors. Overlaid on this are numerous vertical lines of varying heights and colors (blue, purple, pink) that extend from the ground level up to the top of the frame, resembling a digital or network infrastructure. In the center, there is a large, rounded rectangular shape with a blue-to-cyan gradient, containing white text.

This requires a **network**
purpose built for AI

Architecture for the AI-Ready Secure Network



Simplified operations powered by AgenticOps

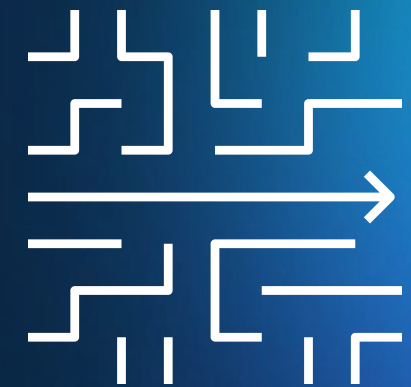


Security fused into the network



Scalable devices ready for AI

Simplified Operations Powered by AgenticOps



A Unified OS for Cloud and On-Prem Management

The foundation of operational simplicity

**Fast, consistent
out-of-box
provisioning**

Simple day 0 operations
Simple, streamlined onboarding
Automated port config
Secure, fast onboarding of devices

**Expanding IOS XE
capabilities available
in the cloud**

CLOUD MANAGEMENT AVAILABLE NOW

1H'26



C9300L



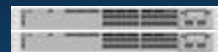
C9300



C9300X



C9200L



C9500



C9200/CX



C9300LM



C9350



Modular

Cloud-Managed Switching

Cloud Management For All IOS XE Switches

Sophistication, simplicity, and scale,
in a single view

Expanding cloud management
support into modular core switches


← Switches ← →

Modular stack Online Modular(10 line cards) SVL

C9610R 2c:5a:0f:1c:f3:40

Summary **Ports** Device health Cloud CLI Event log Location Tools Admin

Chassis stack attributes

 Address: 500 Terry A. Francois Blvd, San Francisco, CA 94158

Device uptime: 12d 2h 8m

Firmware: [Update available](#)
Current version: IOSXE 1713

Supervisor and line cards

Q port 15 Status 2 Slot 2 Chassis 2 results [Reset all](#)

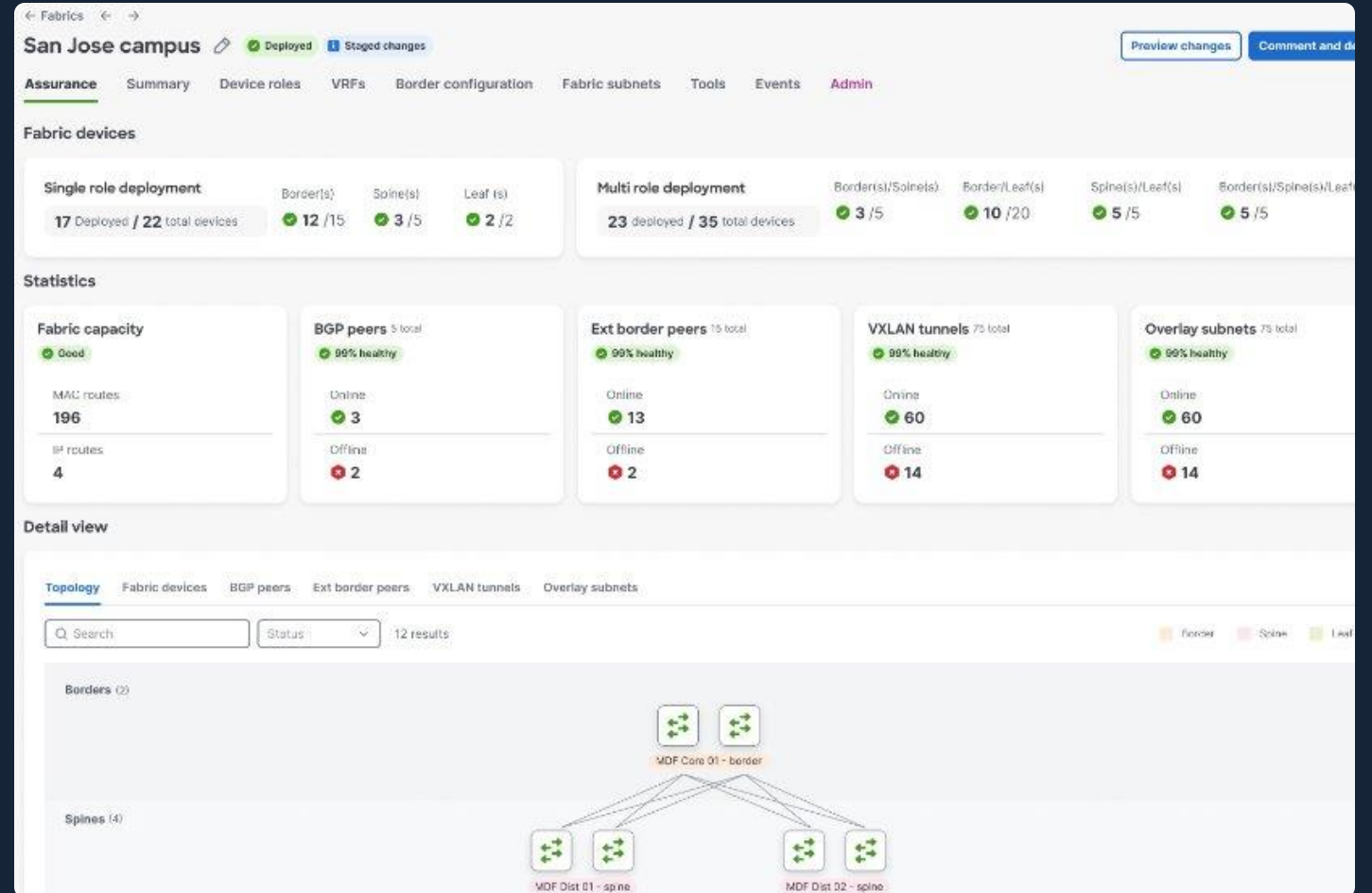
Slot	Model	Role	Serial number
1	2	C9610-LC-48UX	JAE22111ABC
1	2	C9610-LC-48UX	JAE22111ABC

C9610 Smart Switches

Cloud-Managed Fabric

Simple Deployment of Plug-and-Play Fabrics

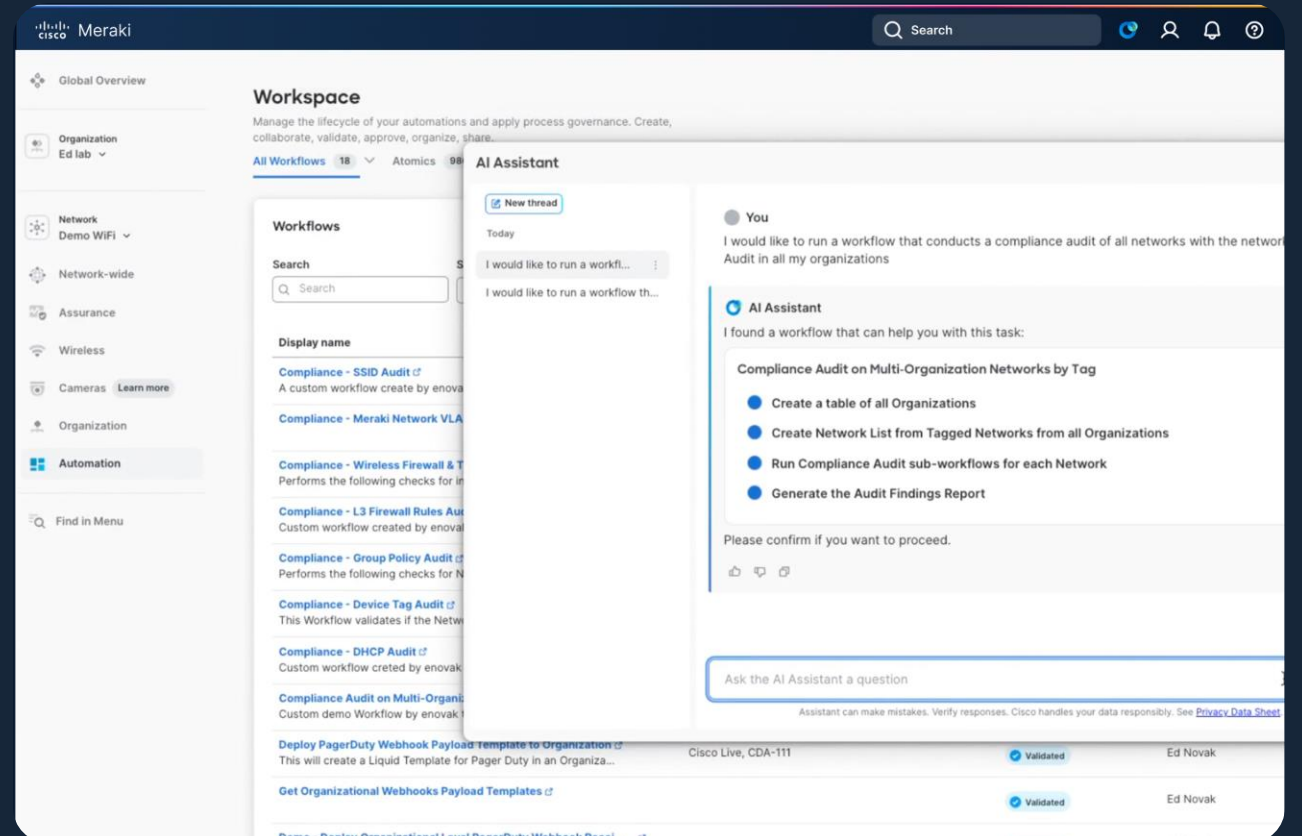
Fast, secure fabric orchestration to simplify large site management from the cloud



Agentic Workflows

Accelerate Cross-Domain Deployments with AI Assistant

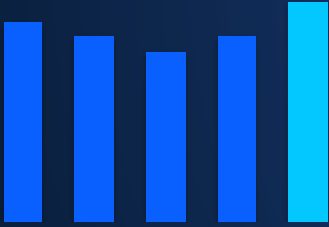
Automate workflows across Meraki, Catalyst Center, Catalyst SD-WAN Manager, ISE, Nexus, and more



Cisco's AgenticOps



Cross-domain telemetry



Ensemble of models and domain expertise



Agentic capabilities

Cisco/Splunk dashboards

GA

AI Assistant

GA

AI Canvas

Early Access

Cisco Cloud Control

Early Access

Other Applications

Coming Soon

Purposeful interactions

New AgenticOps Capabilities to Simplify Networking

CCIE-level expertise across your network 24/7

Autonomous troubleshooting

Delivers credible root cause and remediation.
In minutes.

Continuous optimization

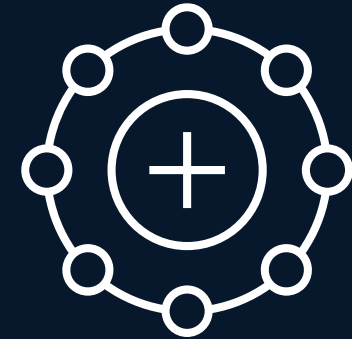
Keeps the network in its best state.
Automatically.

Trusted validation

Makes every change safer.
Predictably.

Powered by deep reasoning and deterministic execution

Scalable Devices Ready for AI



INTRODUCING

Scalable Devices Ready for AI

Smart Switches



Secure Routers



Campus Gateway



Secure Firewall



Large Venue Wi-Fi 7



ALL ORDERABLE JUNE 2025

AVAILABLE NOW

Our New Family of Cisco Smart Switches for the AI-Powered Campus

High-performance,
low latency

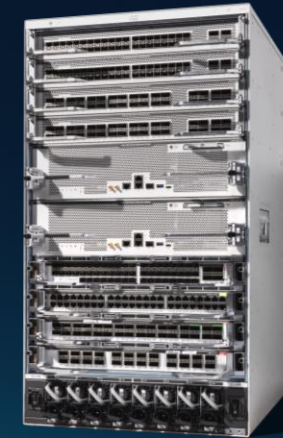
Cisco Silicon One +
co-processor for
security and AI

Post-quantum
secure

Intelligent energy
efficiency



Cisco C9350 Fixed Access
Smart Switch



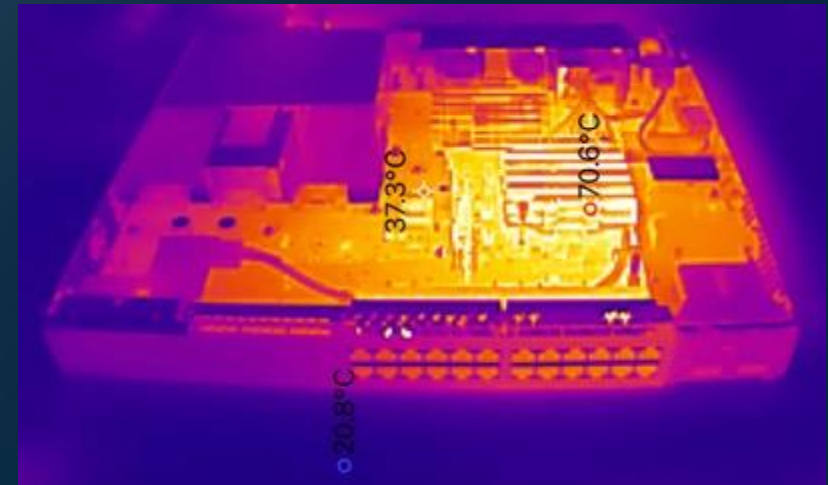
Cisco C9610 Modular Core
Smart Switch

Intelligent Energy Efficiency

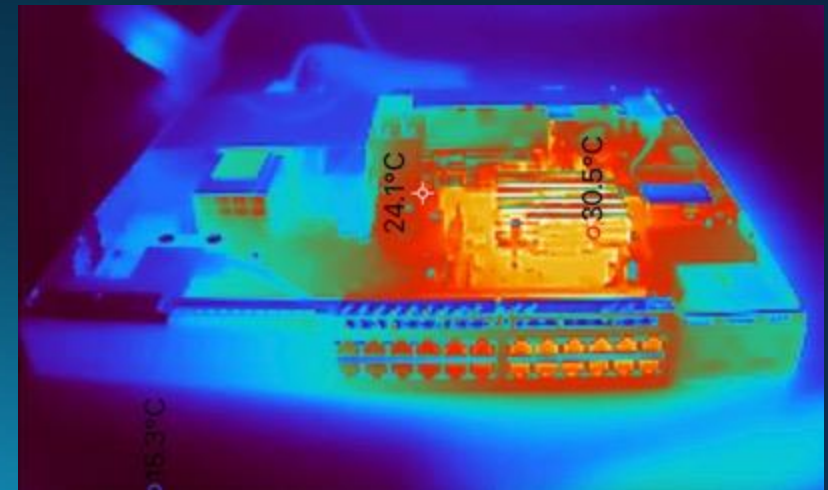
Automated hibernation saves energy and reduces costs

- | Cut cooling-related energy costs by 15-20% per device
- | Extend hardware lifespan
- | Reduce failure risk & downtime
- | Improve sustainability & ESG metrics

Normal Operation (no traffic)
system temperature ~44° C



In Hibernation Mode
~24° C



But what about ...

Extending IT to Rugged Environments



Campus & Branch

 Warehouses

 Distribution Center

 Parking Lots

 Airport

 Port

 Factories

 Utility Substations

 Roadways

 Oil & Gas Refinery

 Mines

Consistent Network Architecture
IOS-XE, Catalyst Center, SD-WAN Manager

19 New Switches Joining Cisco's Leading Portfolio

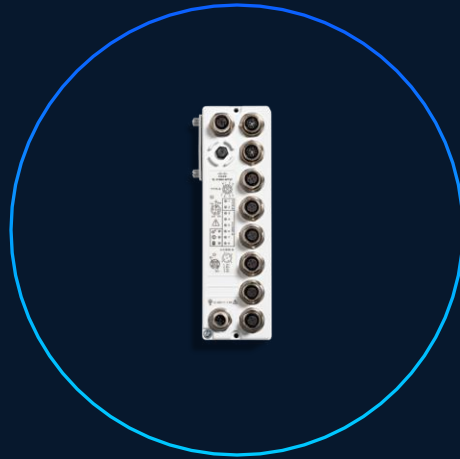
switches for secure, AI-driven operations in ruggedized environments



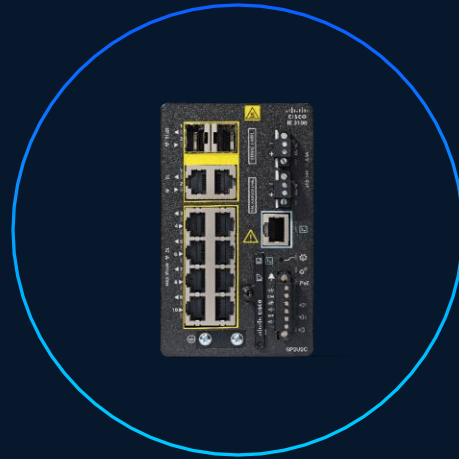
6 New DIN-rail Switches
and 8 Expansion Modules



8 New IP67
Switches



2 New Compact
IP67 Switches



2 New Compact IP30
Switches with 4PPoE



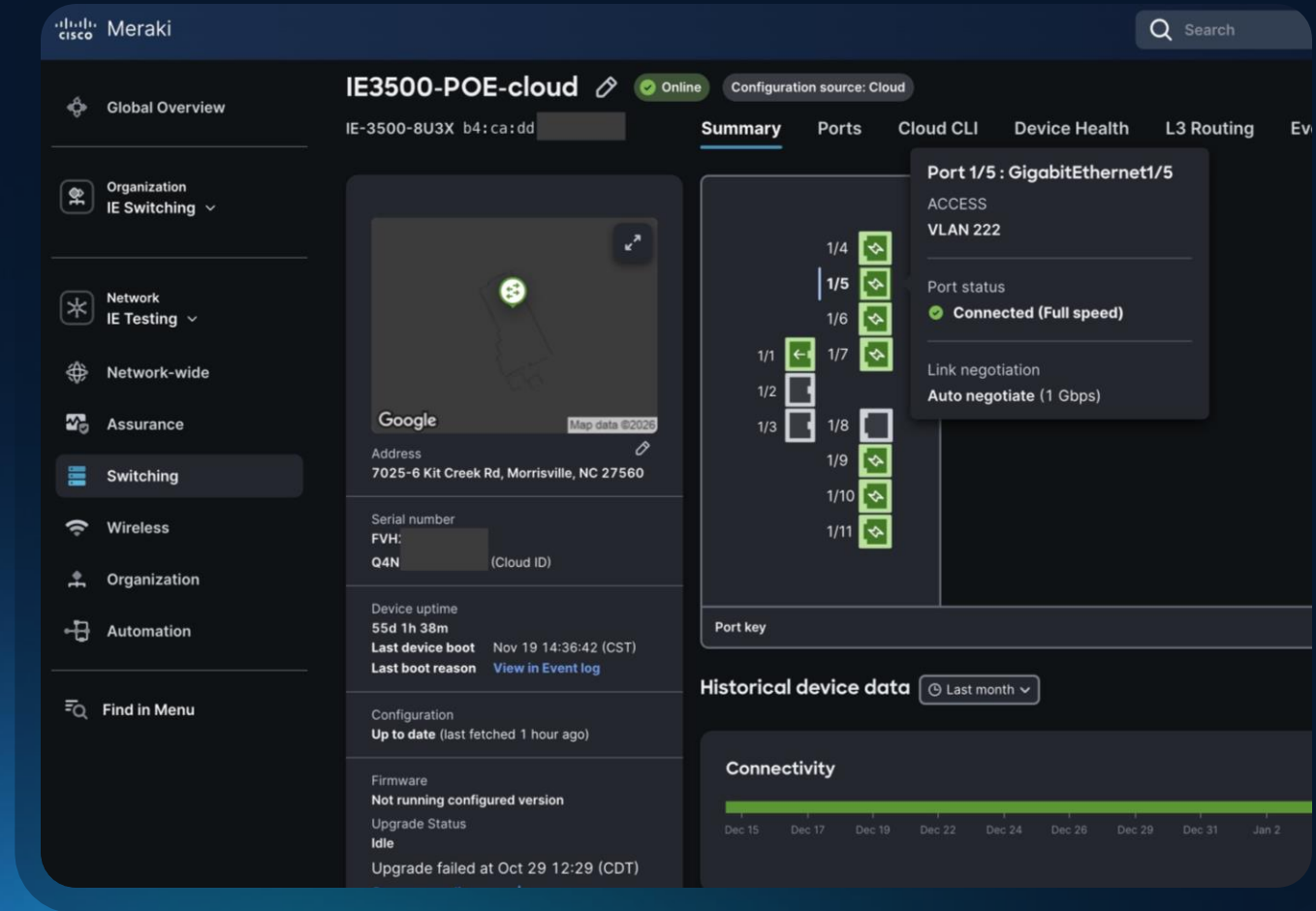
1 New Mixed-port
Rackmount Switch

19 new industrial switches enabling new industrial use cases

Rugged Networking, Cloud-Simple

Beta Feb 26

- A single dashboard to manage enterprise and rugged switches
- Easily extend enterprise networks to outdoors and uncarpeted spaces
- Allow IT teams to enforce consistent security policies across the entire enterprise network footprint



Security Fused Into the Network



Advanced Security at Every Layer

Secure Networking Architecture

- Identity-first
- Continuously verified
- Enterprise-wide policies
- Comprehensive threat intel
- Distributed enforcement



CNSA (U.S. Critical Infrastructure) 2.0 Timeline

January 1, 2027

All new NSS acquisitions must be CNSA 2.0 compliant

December 31, 2030

Phase out all equipment and services unable to support CNSA 2.0

December 31, 2031

Mandatory use of CNSA 2.0 algorithms

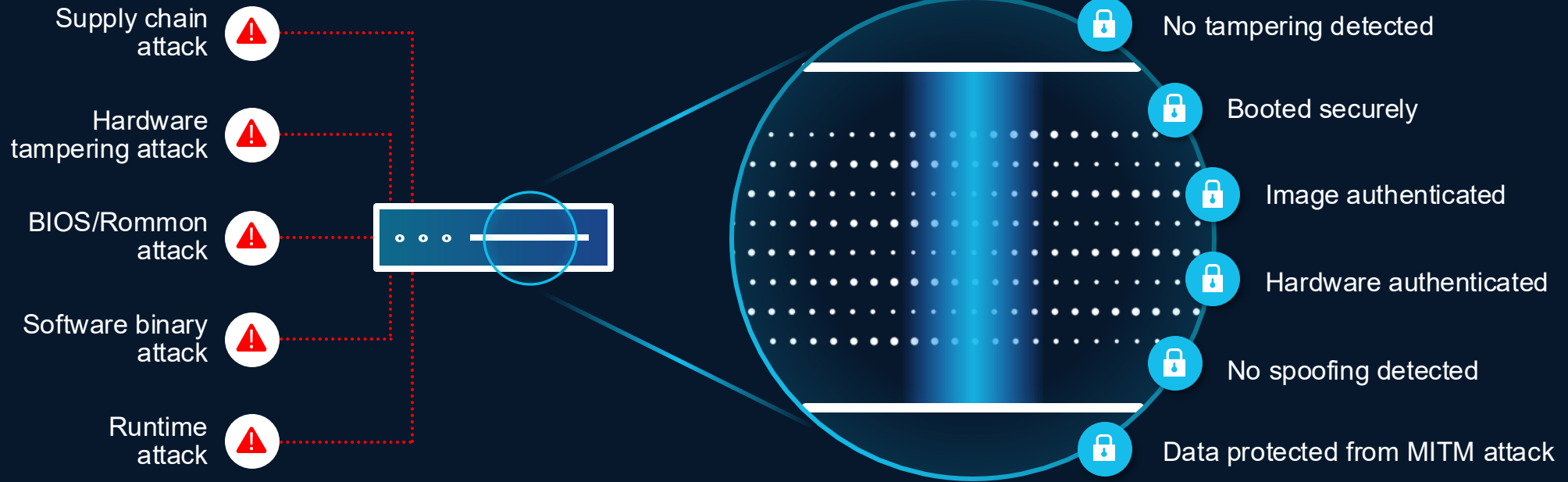
Secure the Device

Secure routing, switching, wireless, from boot time to runtime

Available

NIST-approved PQC algorithms for secure boot processes

Trustworthy Technologies with Post-Quantum Cryptography



Secure the Network

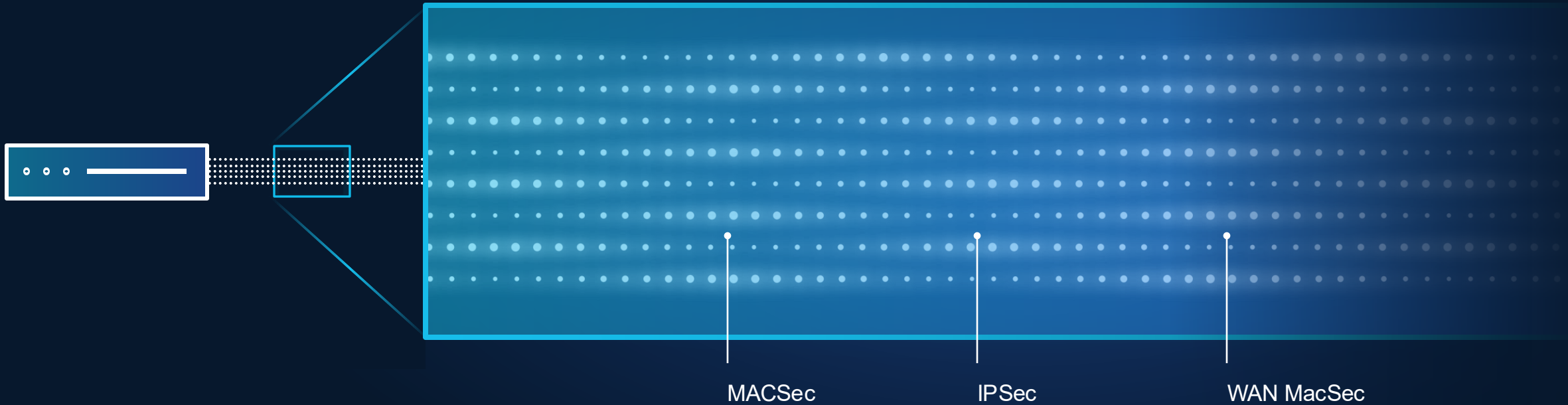
Secure and protect your data across unowned infrastructure

Available

NIST-approved PQC across
LAN, WAN & encrypted tunnels

Post-Quantum Cryptography

Future proof investments | Protect against quantum | Secure sensitive data



Secure Infrastructure >

Live Protect

Stop the Attack, Not the Network.

Block vulnerabilities
instantly, update on your
schedule.

The screenshot displays the Cisco Catalyst Center interface for Network Device Security. The main section is titled "Device vulnerabilities" and shows 73 total vulnerabilities. 12 are available for deployment, and 37 are already deployed. The interface includes search filters for CVSS score, device family, and Live Protect status. A table lists the following vulnerabilities:

Vulnerability	Details	CVSS	Affected devices	Live Protect	Hits
CVE-2023-20198 New	Web UI Unauthorized Access Vulnerability	10.0	1	Available	—
CVE-2024-20169	Command Injection Vulnerability	9.8	1	Available	—
CVE-2023-20154	SNMP Remote Code Execution	9.8	2	Available	—
CVE-2023-20049 New	Authentication Bypass Management Interface	9.6	1	Protection	6
CVE-2024-20467	Privilege Escalation via CLI	9.1	1	Observation	5
CVE-2024-20480	SSH Key Management Vulnerability	9.1	2	Available	—
CVE-2023-20177 New	IPv6 RA Guard Bypass	8.6	1	Protection	1
CVE-2024-20508	Privilege Escalation through Configuration API	8.6	2	Protection	3
CVE-2023-20200	CLI Privilege Escalation	8.6	2	Available	—
CVE-2024-20437	Buffer Overflow in HTTP Server	8.4	1	Observation	8

At the bottom right, the pagination shows "Rows per page 20" and "1-20 of 73".

Available

Scalable Network Segmentation > Secure Cloud Fabric

Simplify NetOps with Secure Fabric

Define your security goals once;
automate deployment with fabric.

Underlay to overlay migration
tools, EVPN multi-homing, and
expanded model support in
Beta Now.

The screenshot displays the Meraki dashboard for a network named 'Fabric-nico-cli (ASN: 65005)'. The interface is organized into several key sections:

- Fabric devices:** Shows deployment status for single and multi-role configurations. Single role deployment: 6 Deployed / 6 Total devices (1/6 Borders, 3/6 Leafs, 2/6 Spines). Multi role deployment: 0 Deployed / 6 Total devices (0/6 Borders, 0/6 Spines, 0/6 Leafs).
- Deployment summary:** Provides a high-level overview of configurations: 1 Deployed / 1 total Border configuration, 1 Deployed / 1 total VRFs, 6 Deployed / 6 created Fabric subnets, and 12 Deployed / 12 total Underlay subnets.
- Statistics:** Displays health and operational metrics: 4 BGP Peers (100% healthy), 1 Ext border peers (100% healthy), 48 VXLAN tunnels (100% healthy), and 6 Overlay subnets (100% healthy).
- Detail View:** A table listing fabric-supported switches with their roles and serial numbers.

Devices	Status	Local IP	Networks	Serial column	Tag	Roles
BORDER-1	Online	10.10.252.254	Cloud Fabric SiteA - switch	Q5JC-LWML-Q1YM		Border
SPINE-0	Online	10.10.252.251	Cloud Fabric SiteA - switch	Q5KD-VA28-994L		Spine
LEAF-2	Online	10.10.252.249	Cloud Fabric SiteA - switch	Q5KE-EL7H-DT94		Leaf
LEAF-1	Online	10.10.252.250	Cloud Fabric SiteA - switch	Q5KE-ST3H-QP07		Leaf

Hybrid Mesh Firewall & Zero Trust >
Security Service Insertion

Firewalling for Any Network Flow, At Scale

Statefully steer specific traffic to the firewall based on identity and context, without sacrificing performance or simplicity.

Factory

Without SSI
With SSI



But what about your branch locations



I just want my business to run smoothly

– Every customer

Resilient, secure branch is critical for delivering amazing consumer experiences



**Need for fast, reliable
Wi-Fi and internet
connection**



**Workloads shifting to
SaaS, public cloud, and
data center**



**No local IT support –
increase the need for
operational simplicity**



**Post-quantum
cryptography safe**

**This requires a new
branch architecture**

Architecture for the AI-Ready Secure Network



Simplified operations powered by AgenticOps

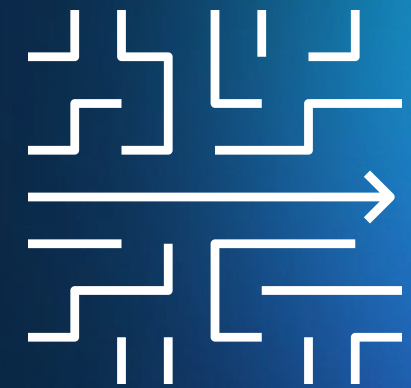


Security fused into the network



Scalable devices ready for AI

Simplified Operations Powered by AgenticOps



Flexible Management

Meeting customers where they are

**Self
managed**



BYO management

Leverage CLI or 3rd party tools

**SD-WAN Manager
& Catalyst Center**



On-premises or cloud

Use cases require on-prem delivery, or advanced configuration

**Meraki
Dashboard**



Cloud

Prefer cloud-enabled delivery for simplicity

Delivering optimized, simplified experiences for all customers

Large Scale Deployments with Unified Branch

Branch Lifecycle Automation

Existing CI/CD Pipeline

Customizable Branch Services

Partner Developed

Cisco unified branch services templates

Branch Models

Visibility

ZTNA

Security Policy

Traffic Services (Cloud, SaaS)

WAN Services

Wireless Services

Access Services (VLANs, SSIDs)

Network Services (e.g. Segmentation)

 **Delivered**
Open Source Customizable

Programmable Infrastructure

Dashboard

 **Delivered**

WAN Routers

Switches

Access Points

B branch-as-code

main branch-as-code /

Find file Edit Code

tidy up labuser authored 2 months ago 114c8f95 [History](#)

Name	Last commit	Last update
.ci	add pipeline config and integrations	3 months ago
data-start-here	tidy up	2 months ago
rules	update	2 months ago
tests/templates	initial commit	3 months ago
workspaces	initial commit	3 months ago
.gitignore	update	2 months ago
.gitlab-ci.yml	Update .gitlab-ci.yml file	3 months ago
Changelog.md	initial commit	3 months ago
LICENSE	initial commit	3 months ago
README.md	initial commit	3 months ago

Project information

32 Commits

1 Branch

1 Terraform State

0 Tags

1.9 MiB Project Storage

README

LICENSE

CHANGELOG

CI/CD configuration

Add CONTRIBUTING

Auto DevOps enabled

Add Kubernetes cluster

Add Wiki

Configure Integrations

Created on

- Project
- branch-as-code
- Pinned
- Issues
- Merge requests
- Pipelines
- Repository
- Manage
- Plan
- Code
- Build
- Secure
- Deploy
- Operate
- Monitor
- Analyze
- Settings
- Help

SOURCE CONTROL

CHANGES

Message (%Enter to commit o...

Commit

GR... Auto

Deploy Unified Branc... main

- Clean Up labuser
- fix version to 0.6 labuser
- Deploy Unified Branches labuser
- Deploy Unified Branches labuser
- tidy up labuser
- deploy 5 branches labuser
- clean up labuser
- deploy branches labuser
- clean up labuser
- update to 0.6.0 labuser
- update labuser

! pods_variables.nac.yamll .../data-start-here 2

! pods_variables.nac.yamll .../data 2

branch-as-code > data > ! pods_variables.nac.yamll > {} meraki > [] domains > {} 0 > [] organizations > {} 0 > [] networks > {} 4 > name

Network-as-Code Data Model - Cisco Network-as-Code Data Model (schema.json)

```

1 meraki:
2   domains:
3     - name: !env domain
4       administrator:
5         name: admin
6       organizations:
7         - name: !env org_name
8           managed: true
9           # admins:
10            # - name: nac-lab-user
11             # email: !env email
12            # organization_access: full
13         networks:
14 >         - name: Unified Branch 1...
66 >         - name: Unified Branch 2...
118 >         - name: Unified Branch 3...
170 >         - name: Unified Branch 4...
222 >         - name: Unified Branch 5...

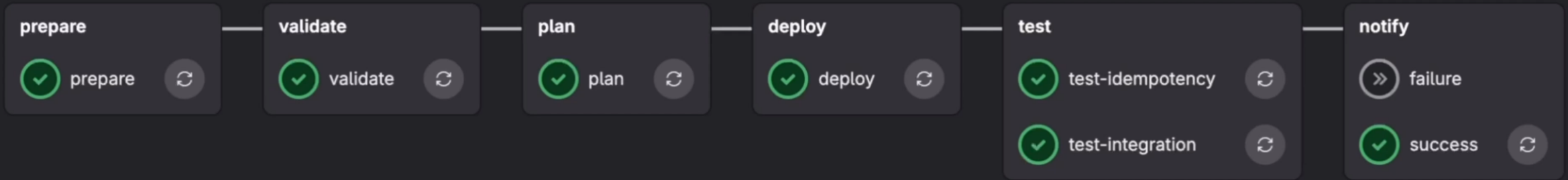
```

For **main**

latest CO 8 jobs ⌚ 4 minutes 10 seconds, queued for 0 seconds

Pipeline Jobs 8 Tests 110

Group jobs by Stage Job dependencies



Deploy Unified Branches

Delete

✓ Passed labuser created pipeline for commit `3e6e4b4c` 8 minutes ago, finished 3 minutes ago

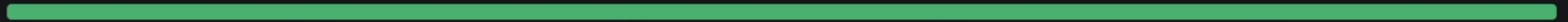
For `main`

latest 8 jobs 4 minutes 10 seconds, queued for 0 seconds

- Pipeline
- Jobs 8
- Tests 110

Summary

110 tests 0 failures 0 errors 100% success rate 14.37s



Jobs

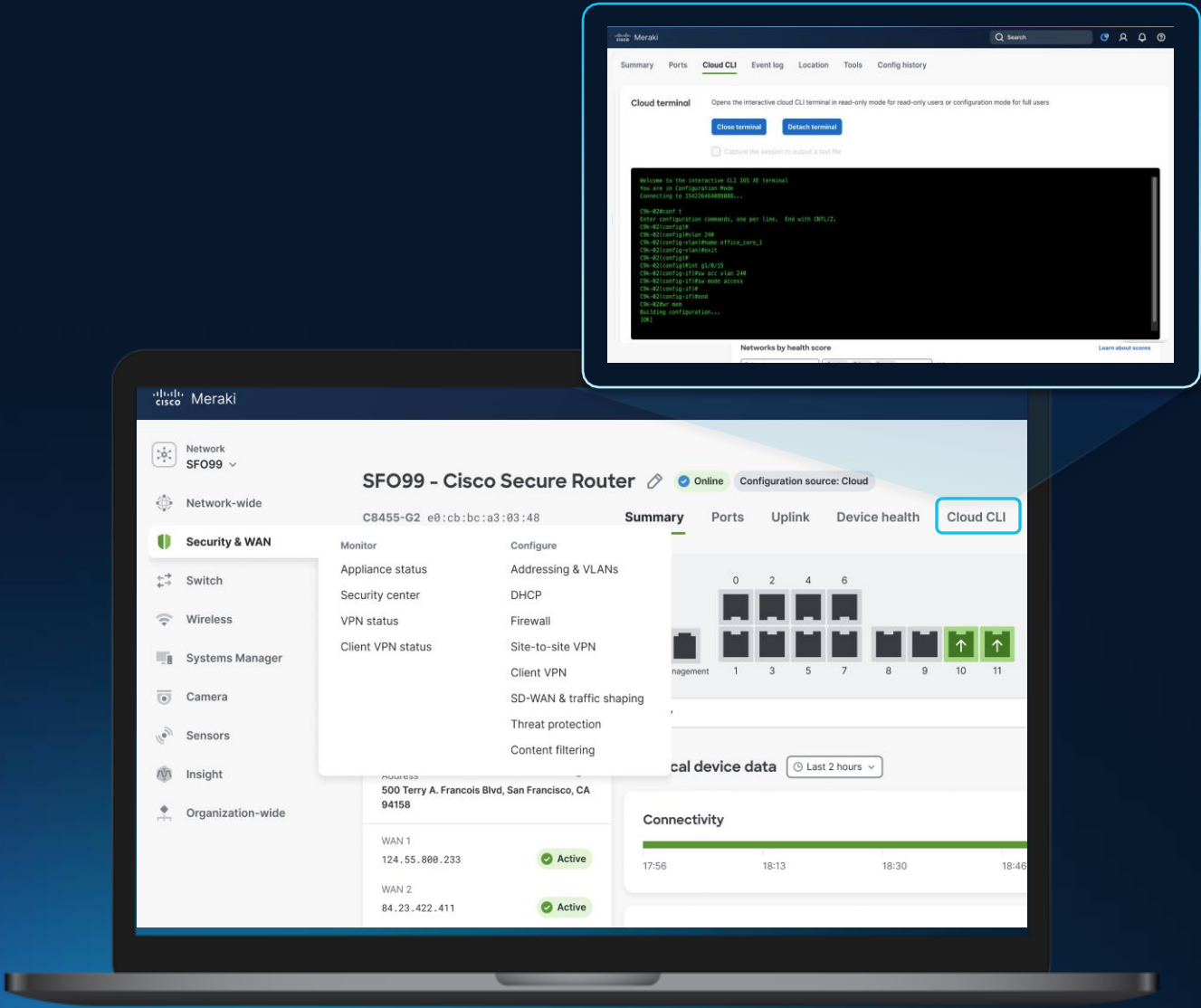
Job	Duration	Failed	Errors	Skipped	Passed	Total
test-integration	14.37s	0	0	30	80	110

GA JUNE

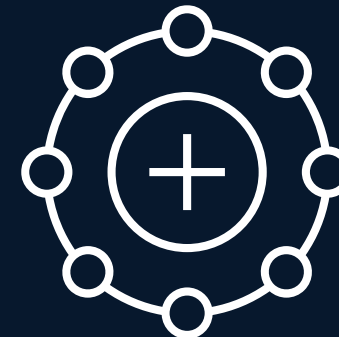
Dashboard Managed IOS XE

Unified management, configuration, and monitoring of IOS XE Secure Routers & MX on the Meraki dashboard

Delivering operational simplicity, security, and scaled API automation



Scalable Devices Ready for AI



Secure WAN portfolio

Catalyst 8000
ISR 1K/4K
ASR 1K



IOS XE with Routing
and SD-WAN

NEW

Cisco 8000 Series
Secure Router



Taking the best into a
converged portfolio
Continued investment in
IOS XE and MX OS

Meraki MX



MX OS and
Meraki Dashboard

Security Performance to Protect Users and Branches



Cisco 8000 Series Secure Routers

- Secure networking processor
- More throughput to support increased application workloads
- Hybrid mesh firewall for secure branch connectivity
- Post-quantum secure
- Use Case Based Licensing

Secure Your Network with Quantum-Safe Routers for Every Size and Location

Available	Available	Available	Available	Available	JUNE 2026
					
Cisco 8100 Series Secure Routers	Cisco 8200 Series Secure Routers	Cisco 8300 Series Secure Routers	Cisco 8400 Series Secure Routers	Cisco 8500 Series Secure Routers	Cisco 8600 Series Secure Routers
Small Branch	Medium Branch	Large Branch	Campus	Data Center	Data Center
IOS XE					
AVAILABLE	AVAILABLE	AVAILABLE	AVAILABLE	AVAILABLE	JUNE 2026
MX					
AVAILABLE	JUNE 2026	JUNE 2026	AVAILABLE	-	-

Deliver Exceptional Branch Experiences

- Smart Wi-Fi 7 access points and cloud-managed switches
- Sustainable and energy efficient designs
- Make every space smarter



Cisco Wireless
Wi-Fi 7



Cloud-managed
Switching



Security Fused Into the Network



Advanced Security at Every Layer

Secure Networking Architecture

- Identity-first
- Continuously verified
- Enterprise-wide policies
- Comprehensive threat intel
- Distributed enforcement



Building a Quantum-Safe WAN

010110
110010
001011

Encryption

Generate the encryption key for
secure communication



Authentication

Verify the authenticity of the
communicating devices / users



Secure Boot

Ensure authenticity and integrity
of software and hardware

Build Quantum Agility

Scalable Network Segmentation

Continuously verified identity and group policy applied across the network



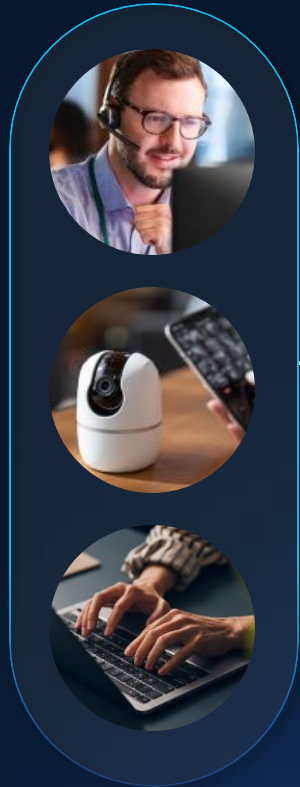
Zero Trust Access: Cisco SASE

Secure access for people, things and AI Agents

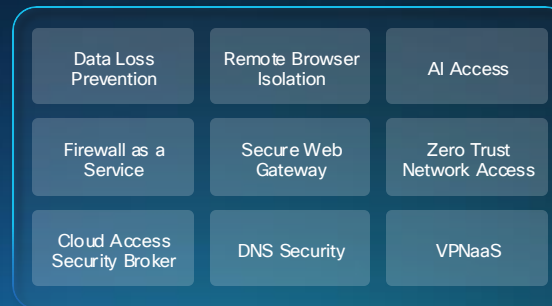
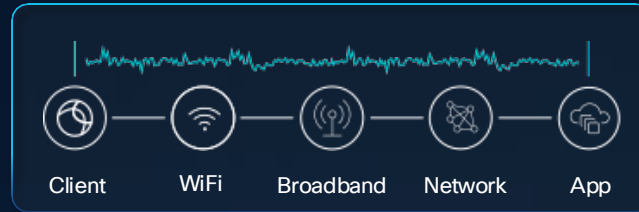
Every device, person, thing, everywhere

Zero downtime:
Experience and Policy Assurance

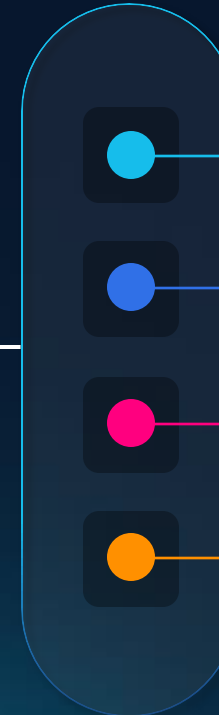
Zero friction:
We do the plumbing



Zero impostors:
Identity Trust



Consistent Security:
Security Service Edge



Traditional Apps

Private Apps

Internet Apps

SaaS Apps

CISCO Connect

Thank you

