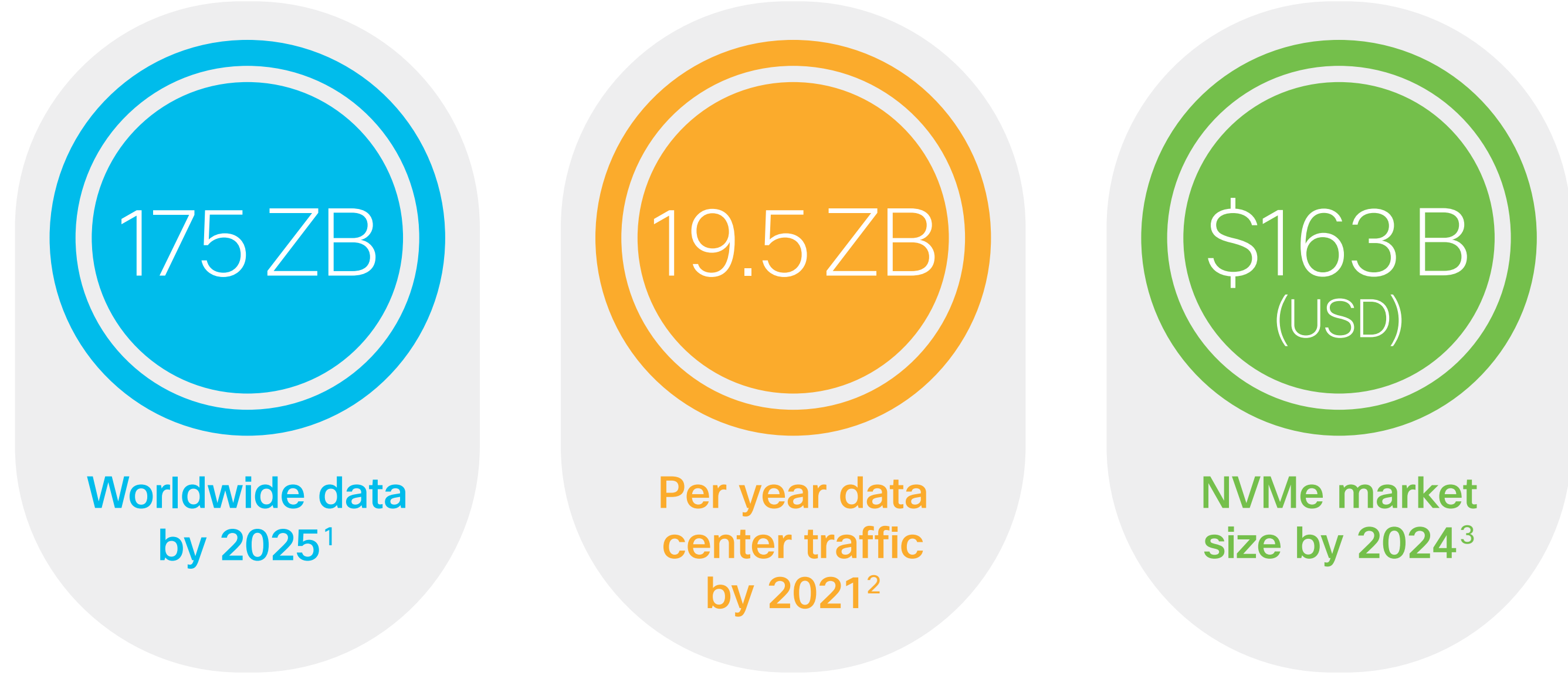


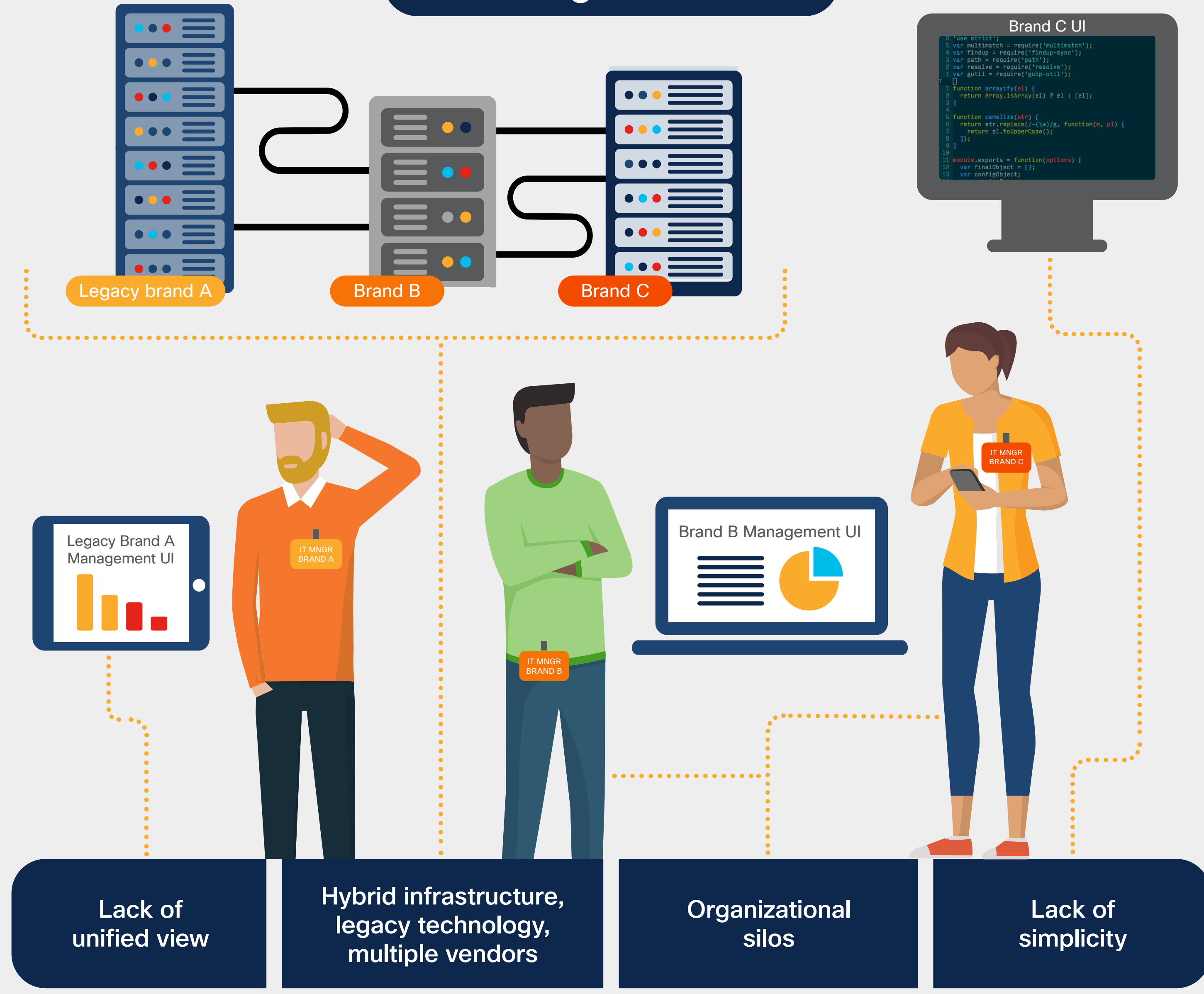
# SAN Analytics: Get Real-time Visibility into NVMe and All Flash Storage

## Exponential growth of enterprise data storage



How can you gain deep visibility into your production environment?

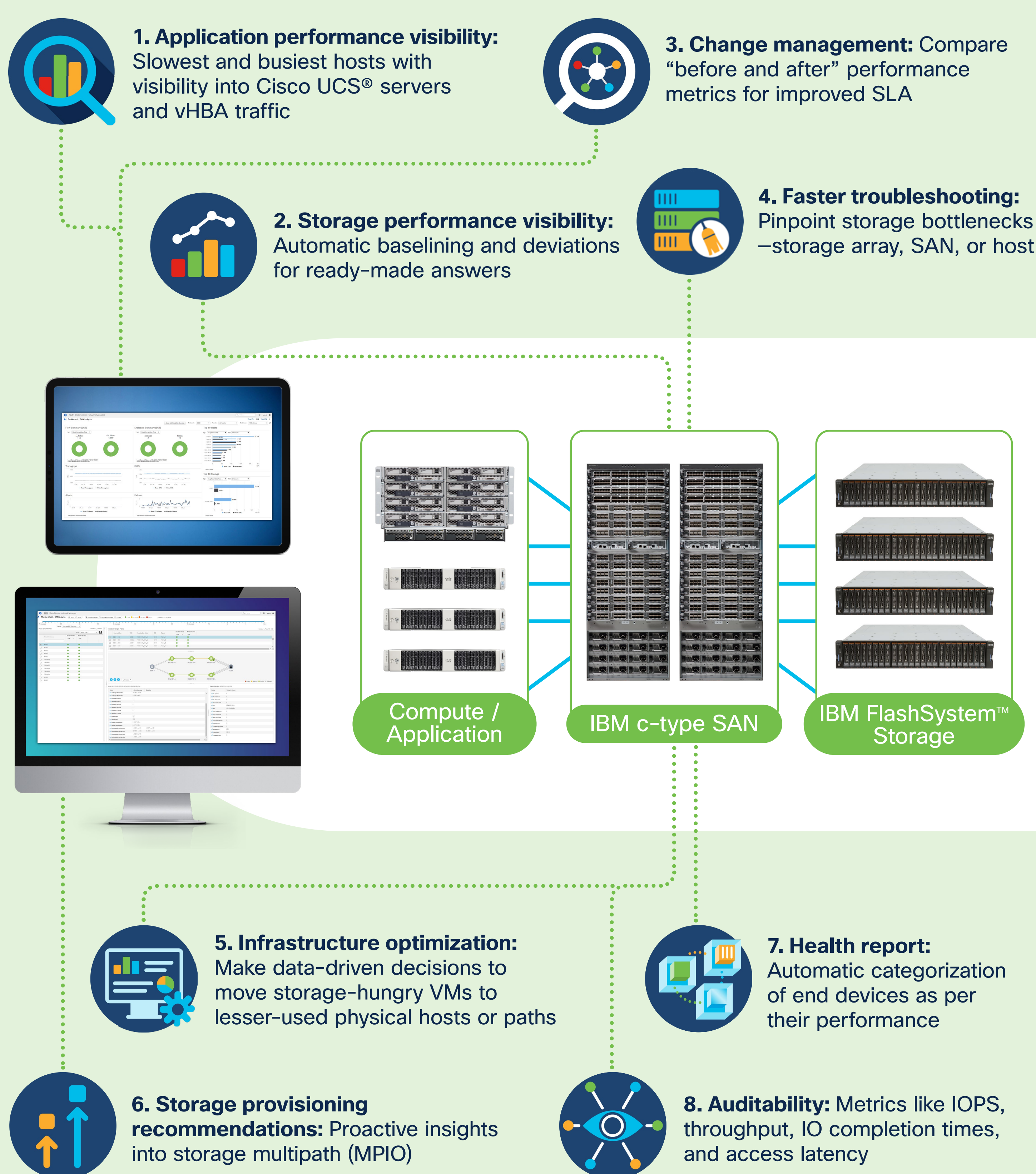
Challenges include:



Network operations significantly affect enterprise service levels:



IBM c-type SAN Analytics can give you the information and simplicity you need to take control of your networked block storage environment. Explore the top use cases and benefits:

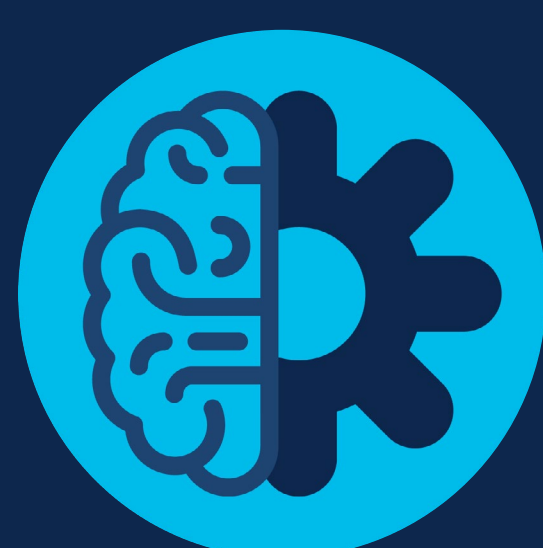


## IBM c-type SAN Analytics:



- **Simple:** Enabled by a single command
- **Affordable:** No expensive traffic inspection devices
- **Open:** Metrics exported in open format
- **Flexible:** Enable on storage, ISL, or host ports
- **Scalable:** Tens of thousands of flows monitored per switch
- **Always on:** Proactive learning, baselining, and deviations

Learn more



- Watch the Cisco Live 2020 presentation: [Next generation network visibility with DCNM SAN Insights](#)
- Gain a deeper look at enterprise storage infrastructure through an overview of the [Cisco SAN Analytics and SAN Telemetry Streaming solution overview](#)
- Learn about [Cisco SAN Analytics](#) and [Cisco Storage Networks](#)
- Learn about [IBM Storage Networking c-type family](#)

<sup>1</sup> Networkworld - IDC: Expect 175 zettabytes of data worldwide by 2025, December 2018  
<sup>2</sup> The Network - Global Cloud Index Projects Cloud Traffic to Represent 95 Percent of Total Data Center Traffic by 2021, February 2018  
<sup>3</sup> Markets and Markets - Non-volatile Memory Express (NVMe) Market, February 2020  
<sup>4</sup> IDC - Addressing the Need for Proactive Day 2 Datacenter Network Operations  
<sup>5</sup> Cisco 2020 Global Networking Trends Report (page 33)  
<sup>6</sup> Cisco 2020 Global Networking Trends Report (page 67)