

Powering the Secure WAN of the Future with Cisco 8000 Series Secure Router

CISCO Live !

Jason Yang
Principal Technical Marketing Engineer
www.linkedin.com/in/jy71428

Cisco Webex App

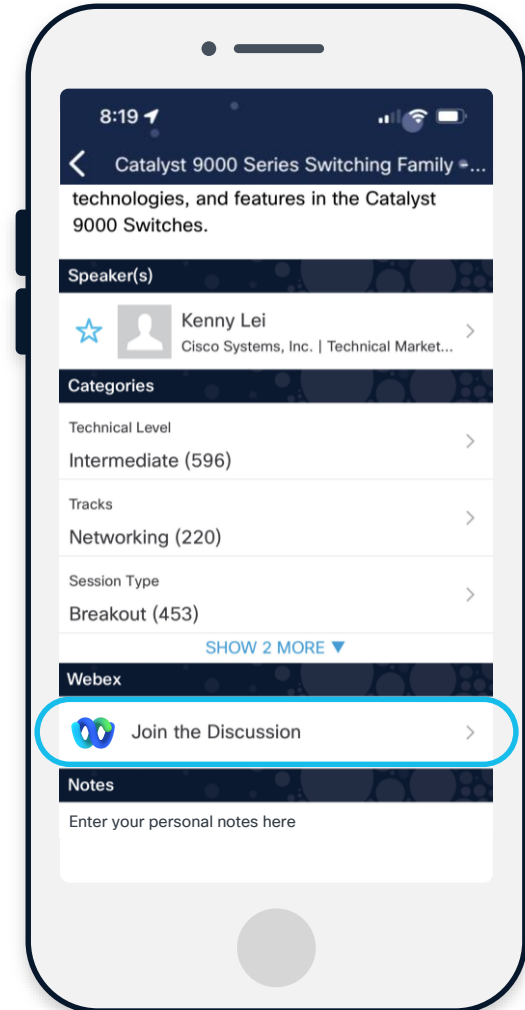
Questions?

Use Cisco Webex App to chat with the speaker after the session

How

- 1 Find this session in the Cisco Live Mobile App
- 2 Click “Join the Discussion”
- 3 Install the Webex App or go directly to the Webex space
- 4 Enter messages/questions in the Webex space

Webex spaces will be moderated by the speaker until June 13, 2025.



What You Will Learn

- This session you will learn why we introduce Cisco 8000 Series Secure Router, and how we bring the best of breed of security and networking together on the Secure Router.
- You will learn the product innovations and key security and networking capabilities in the context of differentiated benefits in Secure WAN use cases.
- You will learn the positioning of the Secure Router and product migration path.
- You will have some key throughput and scale numbers.

Agenda

- 01 Introduction
- 02 Elevate Secure WAN use cases
- 03 Product Innovations
- 04 Product Details
- 05 Migration

Customer trends transforming the WAN edge

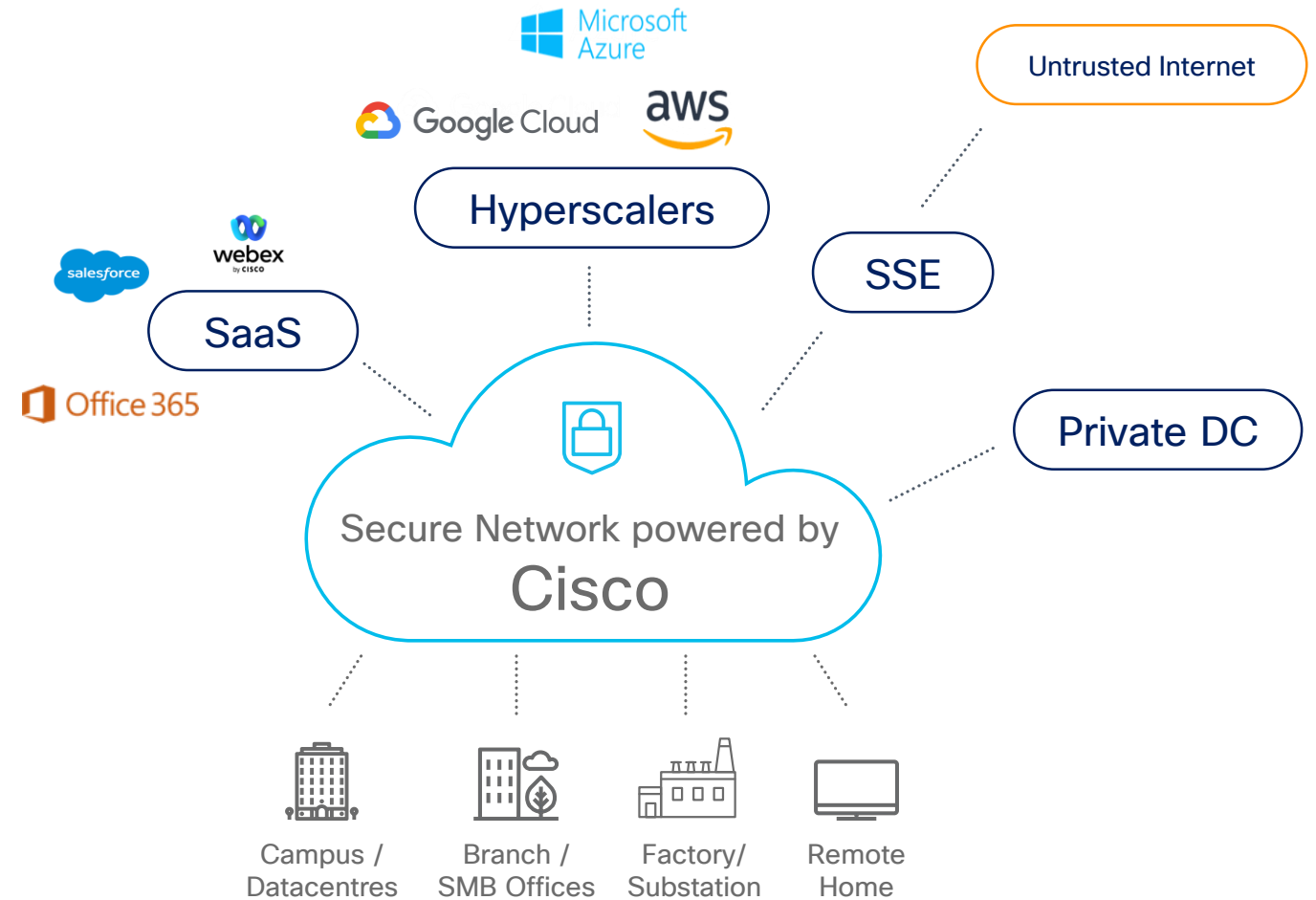
Apps moving to SaaS & IaaS →
multicloud acceleration

Work from anywhere

Application/digital experience

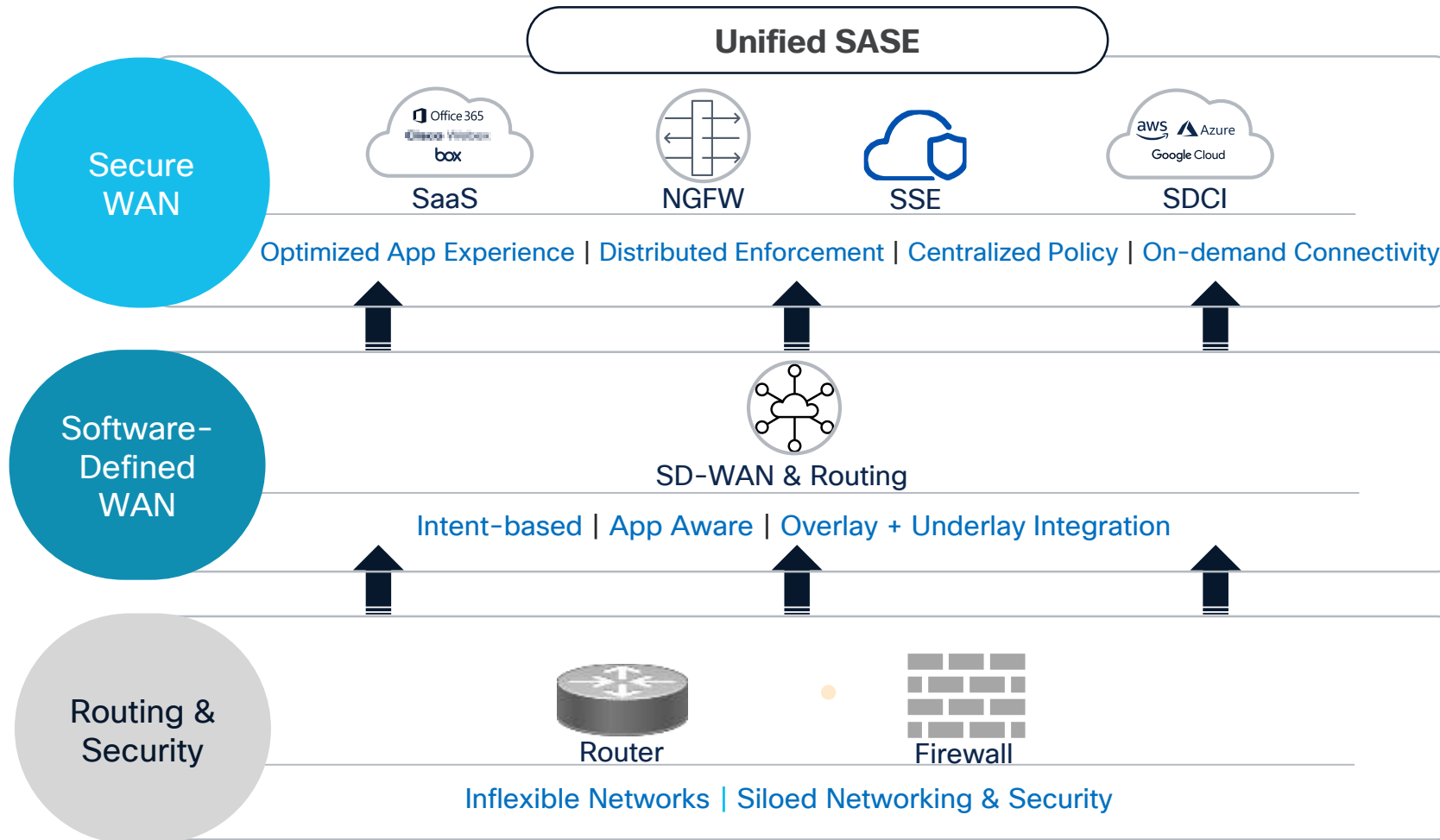
Secure, internet-only branch

Simplify IT → centralized
management distributed
enforcement



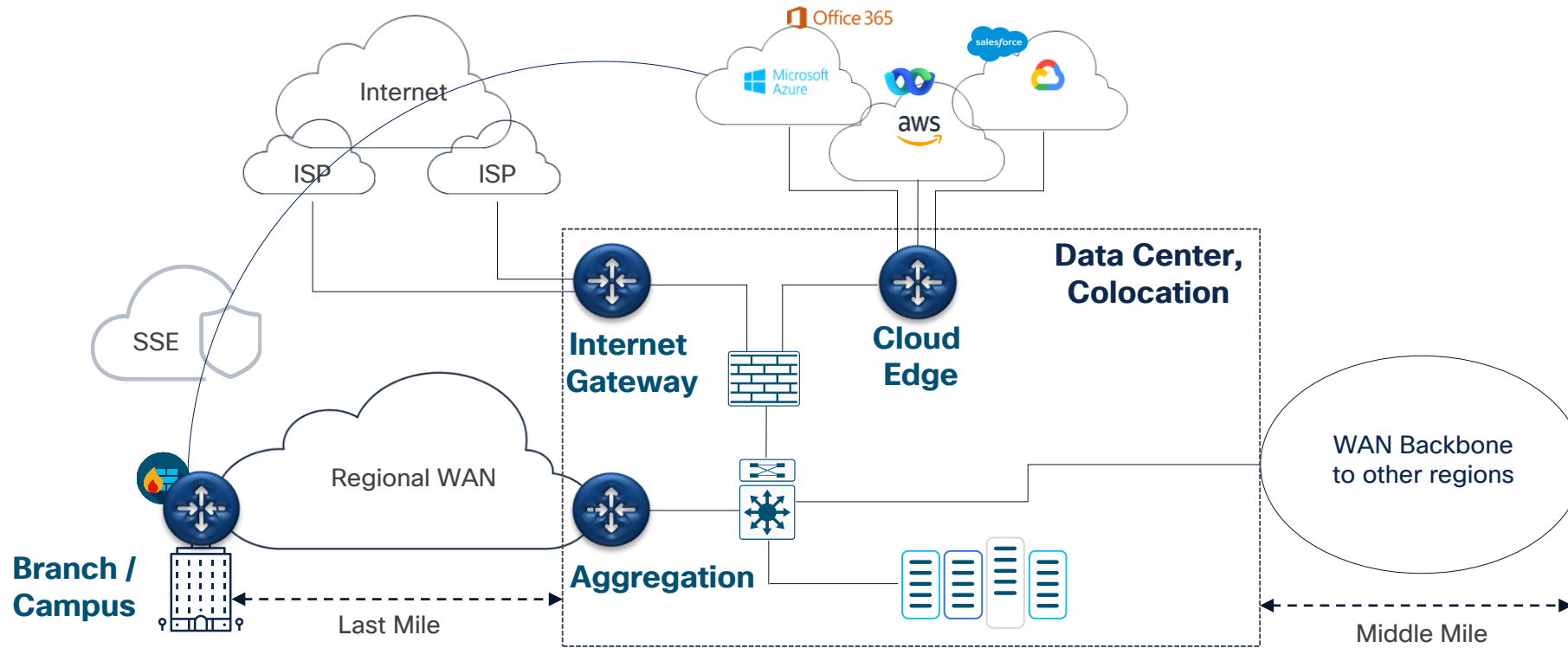
Evolution to Cisco Secure WAN

Security and Networking Converge



Secure WAN Architecture

Places in the Network (PINs) and Functions



Cisco 8000 Series Secure Router Portfolio

Connect Secure WAN for every size location

Small Branch



Cisco 8100

Medium Branch



Cisco 8200

Large Branch



Cisco 8300

Campus Site



Cisco 8400

Data Center



Cisco 8500

Product Mapping in the Secure WAN Architecture

Product	Branch/Campus	Aggregation	Internet Gateway	Cloud Edge
C8100	Small Branch			
C8200	Medium Branch			
C8300	Large Branch	Small	10GE	10GE
C8400	Campus	Medium	25GE or Nx10GE	Nx10GE
C8500	Campus	Large	Nx10GE, 40GE,100GE	Nx10GE, 40GE, 100GE

Elevate Secure WAN Use cases

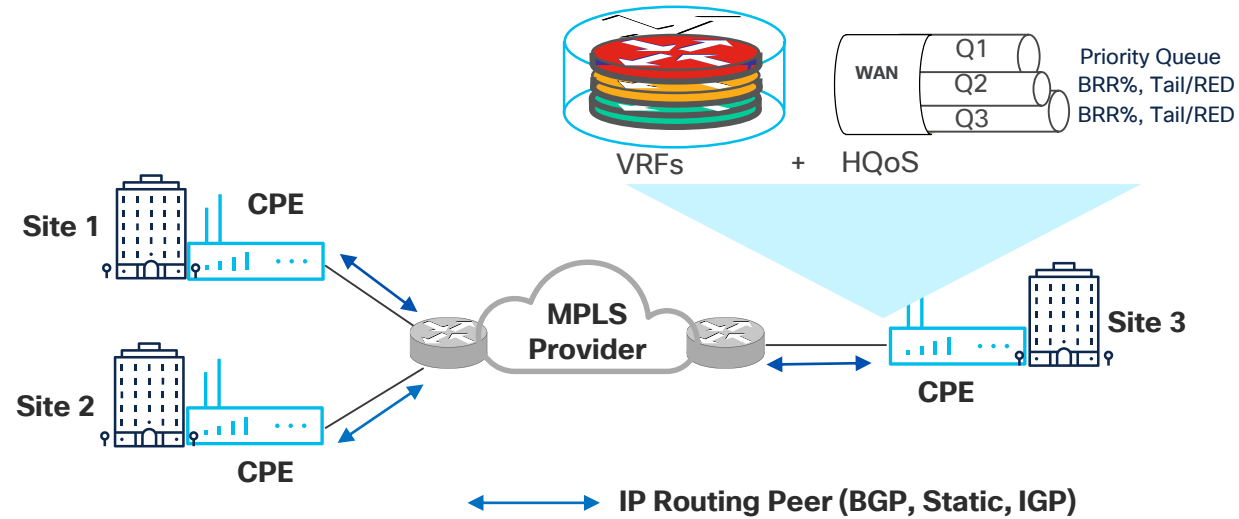
Primary Secure WAN Use Cases

- 1 MPLS CPE**
CPE managed by enterprise or MSP, establish routing peering with MPLS provider PE for sites connectivity, provides VRF segmentation and QoS capabilities.
- 2 Overlay VPN**
Enterprise want to have more control of their own network topology, build Overlay VPN on top of providers' transport network, typically in a Hub & Spoke topology with on-demand tunnels.
- 3 SD-WAN**
Software-defined WAN to route the application to the best path to satisfy Application Aware Routing (AAR) policy.
- 4 Secure Branch DCA/DIA**
Secure Branch direct cloud access (DCA) or direct Internet access(DIA) w/ Threat Protection (TP) using built-in Secure Firewall.
- 5 Secure Networks**
Build highly resilient, secure and scalable network for Military protected core, Utility, Transportation & Govt agencies. It is typically deployed with Segment Routing solution.
- 6 Internet Gateway**
BGP peering with multiple Internet service providers to learn full internet route table, provide resilient Internet access, network address translation and protect against Denial-of-Service Attack.
- 7 Cloud Edge**
Connect on-prem sites at Colo or DC to multi-cloud via private, high-speed connections such as AWS DX, Azure ER, which are encrypted by IPsec or MACsec.

MPLS CPE

Products	Why the Secure Router is better*	VRF + HQoS Throughput @512B
C8100	<ul style="list-style-type: none"> Up to 2x faster* 	Up to 2.9Gbps
C8200	<ul style="list-style-type: none"> Up to 4x faster 10GE & mGig WAN NEW 	Up to 13.5Gbps
C8300	<ul style="list-style-type: none"> Up to 2x faster 4x 10GE & mGig connectivity NEW 	Up to 28Gbps
C8400	<ul style="list-style-type: none"> Up to 3x faster* 25GE WAN NEW 	Up to 65Gbps
C8500	<ul style="list-style-type: none"> Continued perf excellence* 	Up to 150Gbps*

* Better, faster than previous generation products
 C8100 compared against C1121, C1161 ISRs
 C8200 compared against Catalyst 8200 Series
 C8300 compared against Catalyst 8300 Series
 C8400 compared against C8500L-8S4X
 C8500 compared against C8500-12X, C8500-12X4QC



Overlay VPN

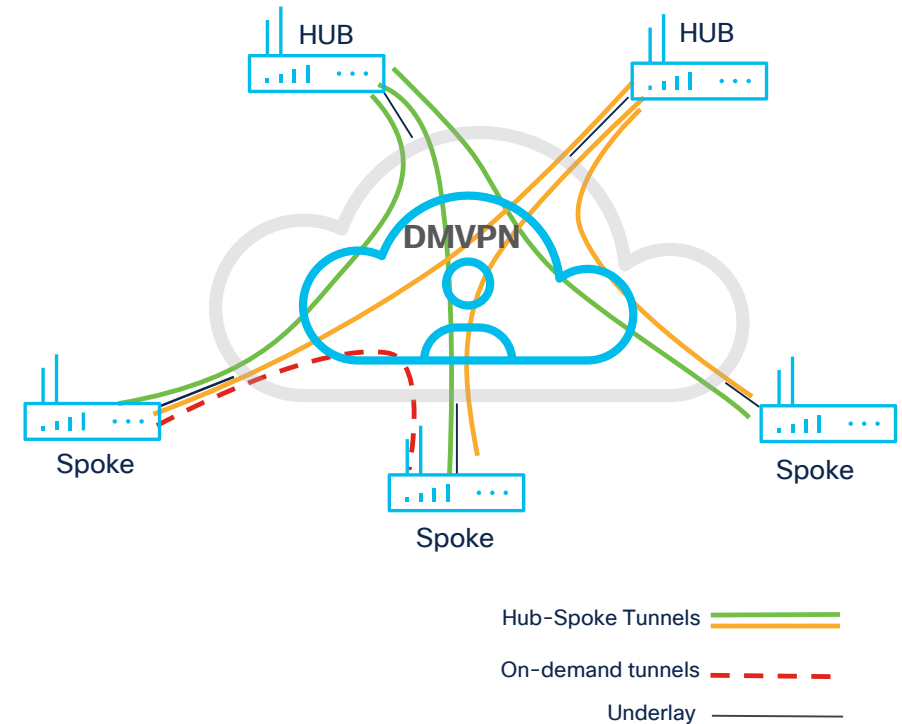
NIST Compliant PQC



Ready for IPsec/MACsec

Products	Why the Secure Router is better*	IPsec Throughput @512B
C8100	<ul style="list-style-type: none"> Up to 50% faster* 	Up to 1.5Gbps
C8200	<ul style="list-style-type: none"> Up to 5x faster* 10GE & mGig WAN NEW 	Up to 5Gbps
C8300	<ul style="list-style-type: none"> Up to 10x faster* 4x 10GE & mGig connectivity NEW 	Up to 20Gbps
C8400	<ul style="list-style-type: none"> Up to 3x faster* 25GE WAN NEW 	Up to 45Gbps
C8500	<ul style="list-style-type: none"> Continued perf excellence 	Up to 63Gbps

* Better, faster than previous generation products



SD-WAN

Application Aware Routing (AAR)

NIST Compliant PQC

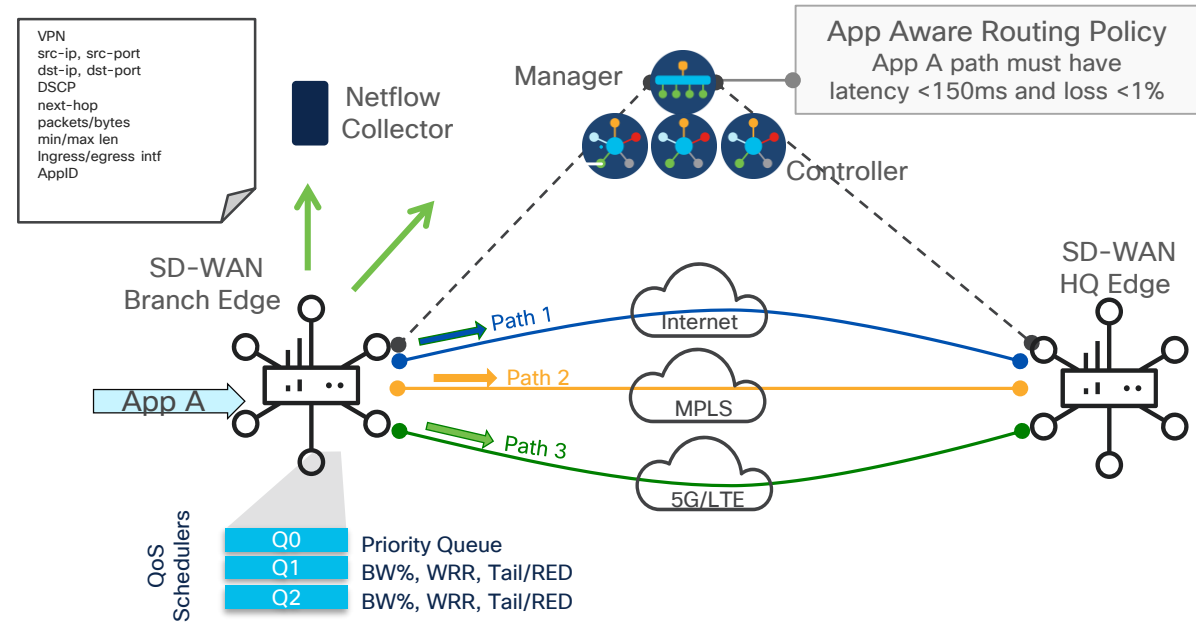


Ready for IPsec/MACsec

Products	Why the Secure Router is better*	AAR ^[1] Throughput @512B
C8100	<ul style="list-style-type: none"> Up to 3x faster* 	Up to 940Mbps
C8200	<ul style="list-style-type: none"> Up to 4x faster* 10GE & mGig WAN NEW 	Up to 4Gbps
C8300	<ul style="list-style-type: none"> Up to 4x faster* 4x 10GE & mGig connectivity NEW 	Up to 15Gbps
C8400	<ul style="list-style-type: none"> Up to 2x faster* 25GE WAN NEW 	Up to 21Gbps
C8500	<ul style="list-style-type: none"> Continued perf excellence 	Up to 22Gbps

* Better, faster than previous generation products


[1] App Aware Routing (AAR): IPsec+QoS+DPI+FNF



Secure Branch DCA/DIA

with Built-in Secure Firewall

Consistent Security Enforcement



Built-in Secure Firewall

Products	Why the Secure Router is better*	TP ^[2] Throughput @EMIX	50% DIA-TP ^[3] Throughput @EMIX
C8100	<ul style="list-style-type: none"> Up to 6x faster* TLS Decryption^[1] 	Up to 1Gbps	Up to 1Gbps
C8200	<ul style="list-style-type: none"> Up to 2x faster* 	Up to 2.4Gbps	Up to 1.9Gbps
C8300	<ul style="list-style-type: none"> Up to 3x faster* 	Up to 7Gbps	Up to 7Gbps
C8400	<ul style="list-style-type: none"> Up to 3x faster* 	Up to 11Gbps	Up to 11Gbps

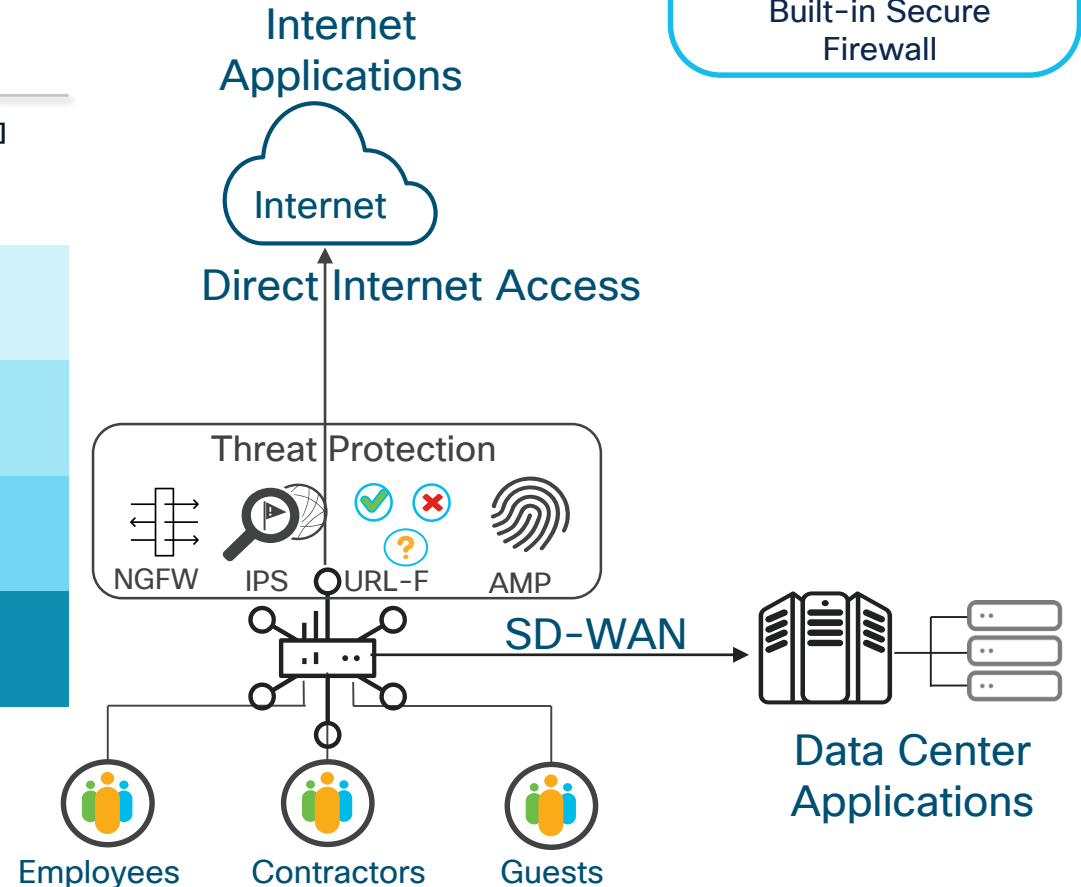


* Better, faster than previous generation products

[1] TLS Decryption is new to small branch routers, already supported on previous gen medium/large branch and campus routers

[2] Threat Protection (TP): 100%DIA-NAT + NGFW + IPS + URL-F + AMP

[3] 50% DIA-TP: IPsec + QoS + DPI + FNF + DIA-NAT50% + ZBFW + IPS + URL-F + AMP + TG



Secure Networks

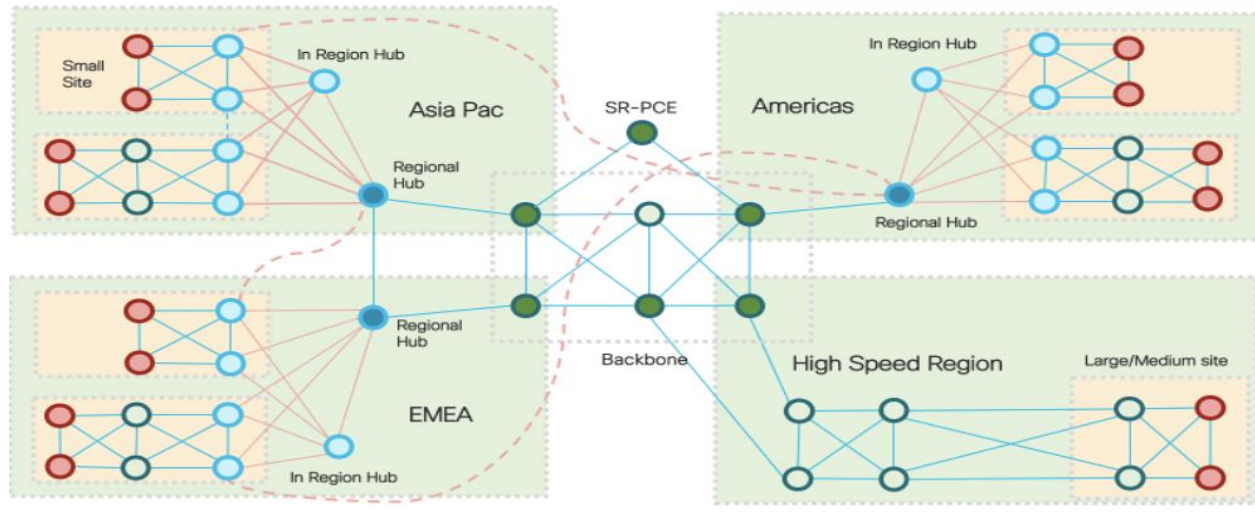
Typically deployed with Segment Routing Solution

NIST Compliant PQC



Ready for IPsec/MACsec

Products	Why the Secure Router is better*	IPsec Throughput @512B
C8100 NEW	<ul style="list-style-type: none"> Up to 50% faster* 	Up to 1.5Gbps
C8200	<ul style="list-style-type: none"> Up to 5x faster* WAN/LAN MACsec on all built-in ports^[1] NEW 	Up to 5Gbps
C8300	<ul style="list-style-type: none"> Up to 10x faster* WAN/LAN MACsec on all built-in ports^[1] NEW 	Up to 20Gbps
C8400	<ul style="list-style-type: none"> Up to 3x faster* Fast Reroute (<50msec convergence) NEW Ingress Classification (e2e QoS treatment) NEW 	Up to 45Gbps
C8500	<ul style="list-style-type: none"> Continued perf excellence 	Up to 63Gbps



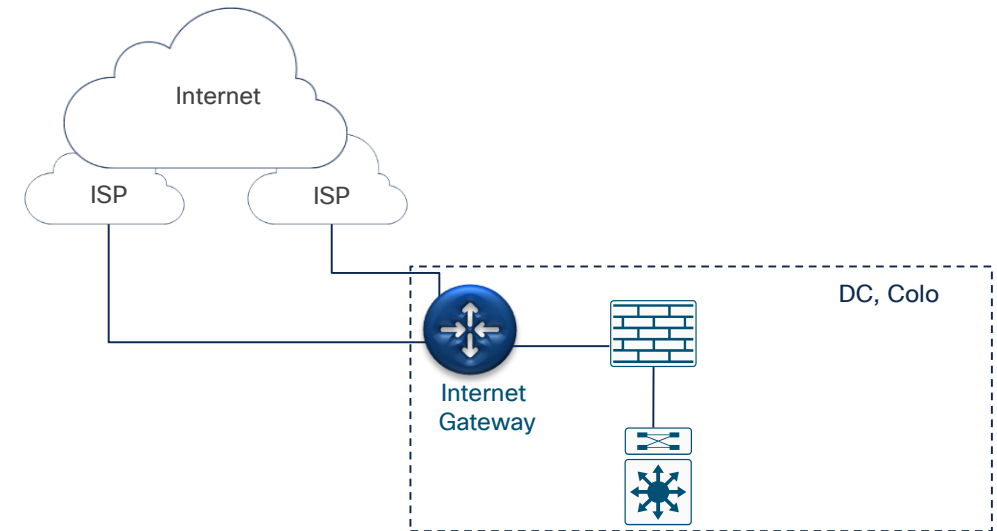
* Better, faster than previous generation products

[1] In previous gen branch routers WAN/LAN MACsec is only supported on C8300-2N2S-4T2X built-in 10GE ports, other models require specific NIM modules, it is fully supported in prev gen campus and DC routers.

Internet Gateway

Products	Why the Secure Router is better*	NAT Throughput @512B
C8300	<ul style="list-style-type: none"> Up to 2x faster* 4x 10GE & mGig connectivity NEW 	Up to 26Gbps
C8400	<ul style="list-style-type: none"> Up to 2x faster* 25GE WAN NEW 2x NAT session scale (4M) 	Up to 59Gbps
C8500	<ul style="list-style-type: none"> Continued perf excellence 2x BGP route scale (8M) 	Up to 104Gbps

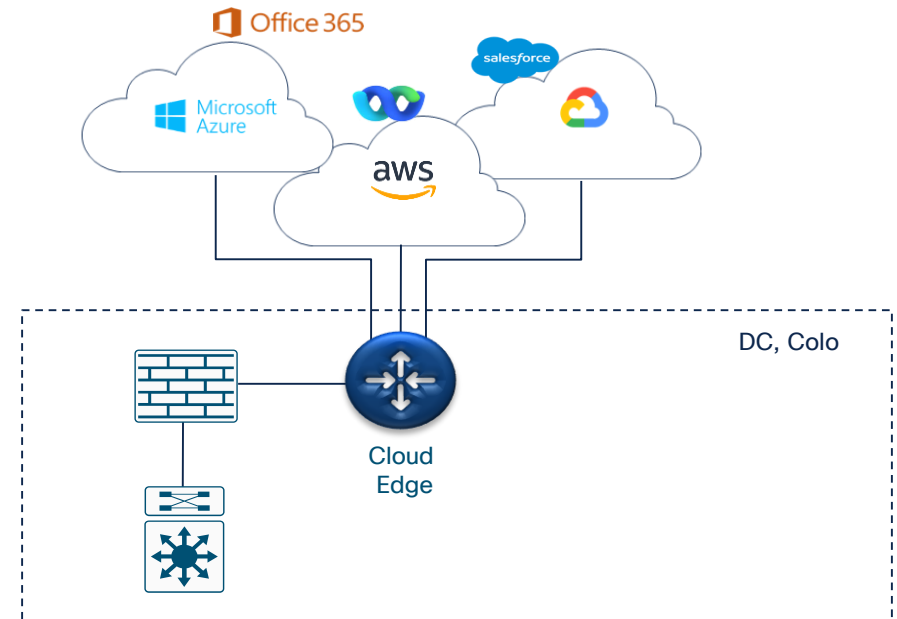
* Better, faster than previous generation products



Cloud Edge

Products	Why the Secure Router is better*	IPsec Throughput @512B
C8300	<ul style="list-style-type: none"> Up to 10x faster* WAN/LAN MACsec on all built-in ports NEW 	Up to 20Gbps
C8400	<ul style="list-style-type: none"> Up to 3x faster* 	Up to 45Gbps
C8500	<ul style="list-style-type: none"> Continued perf excellence 	Up to 63Gbps

* Better, faster than previous generation products



Product Innovations

The Power of Cisco 8000 Series Secure Router

Designed with integrated, unwavering WAN security

Consistent Security Enforcement



Built-in Secure Firewall

NIST Compliant PQC



Ready for IPsec/MACsec

Amazing Throughput



Up to 6x TP, 10x IPsec

Line rate MACsec



WAN/LAN MACsec on all built-in ports

Security AI/ML



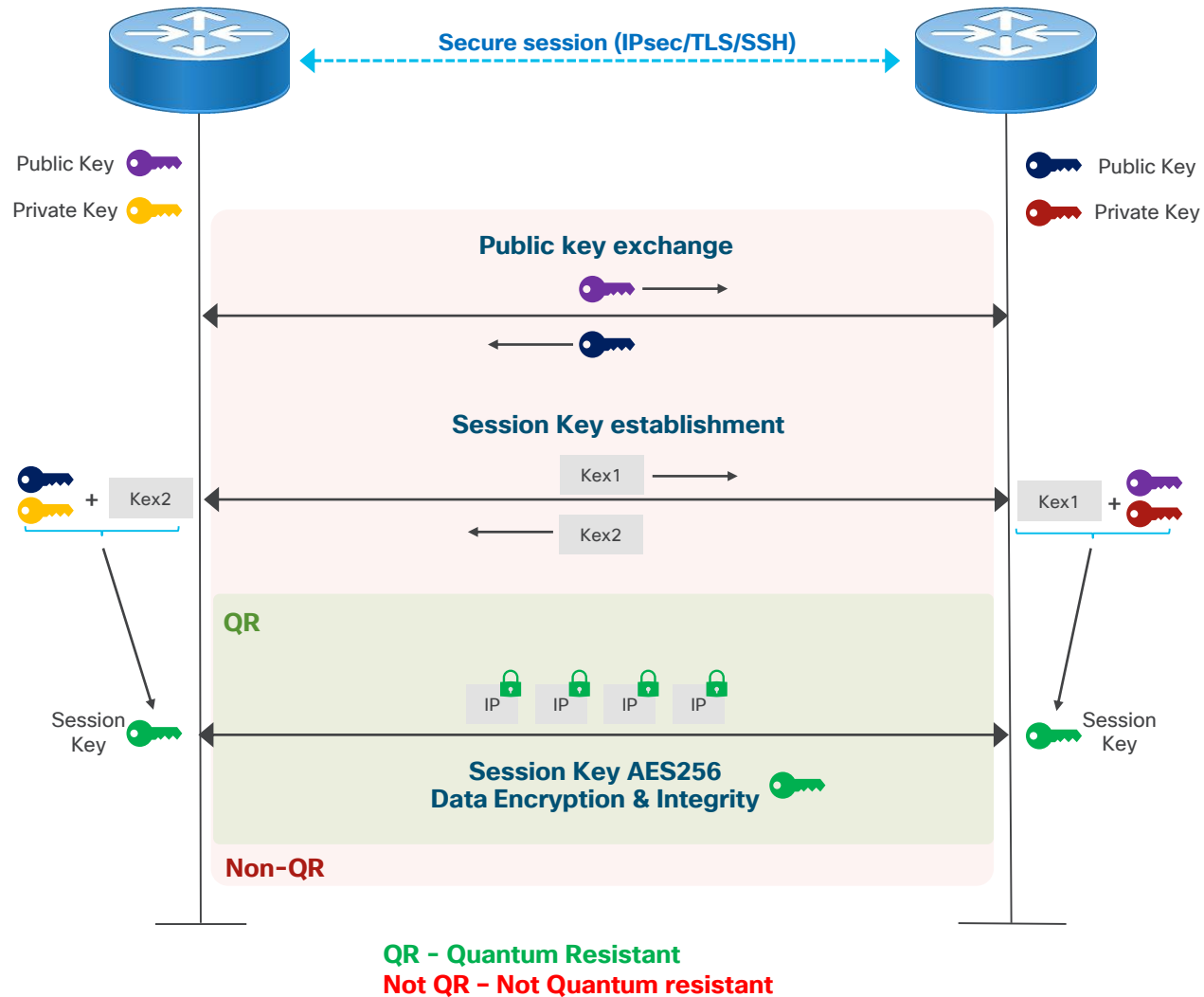
Ready to offload (C8300/C8400)

Physical Intrusion Detection



Even in power off

Quantum threat to Transport Security



• All dynamic secure session establishment are based on 2 phases:

1. Key exchange/Key establishment

- Public Key crypto: RSA, DHE, ECDHE
- Session key derived from exchange info

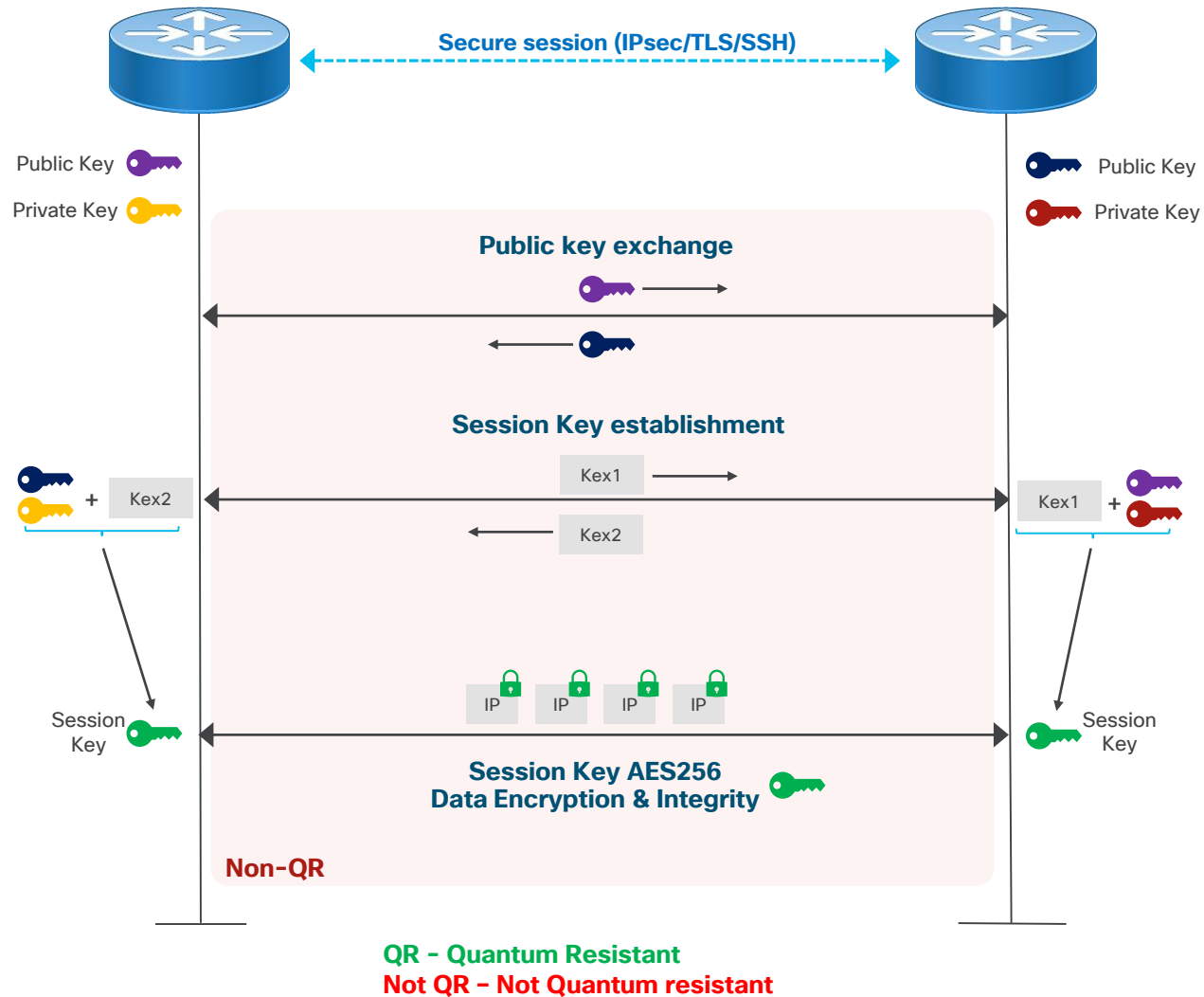
Key exchange phase is not quantum safe

2. Session encryption with session key

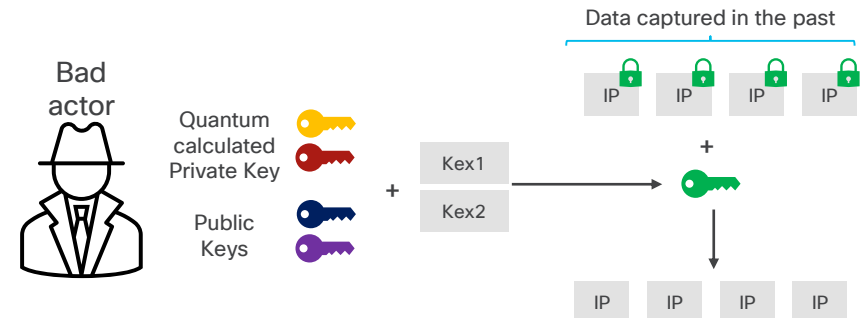
- Symmetric encryption: AES256

Session encryption is quantum safe

Quantum threat – HNDL

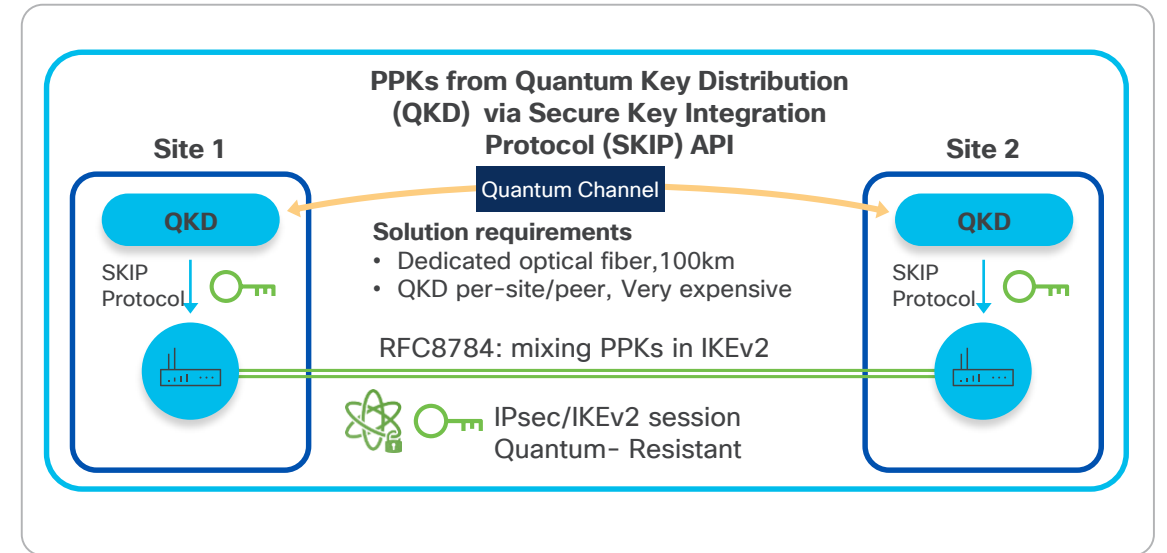
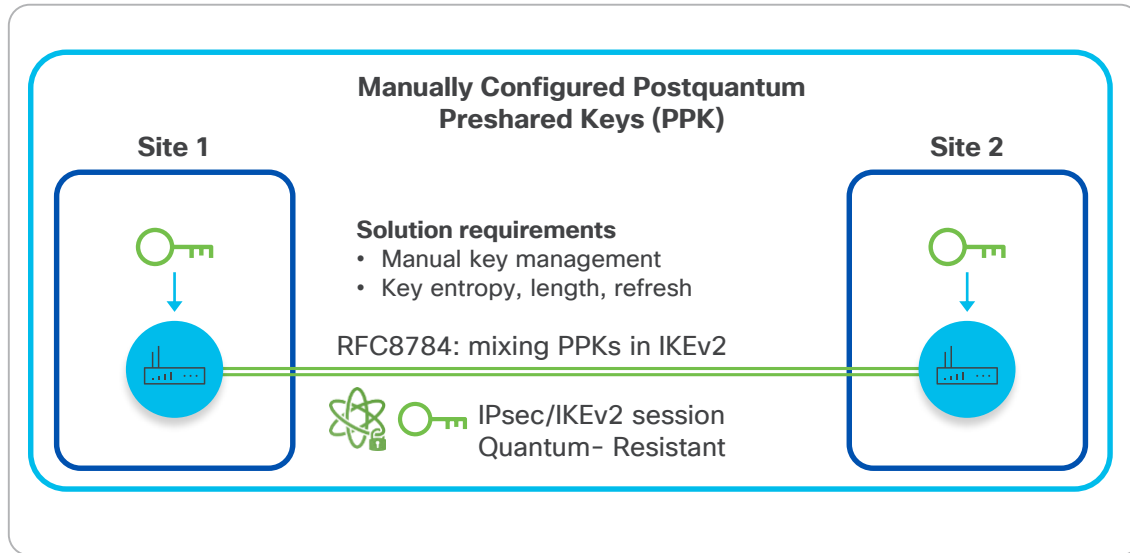


- Attacks HNDL (Harvest now, decrypt later)
 - Attacker only needs to capture the Key Exchange phase which is not quantum-resistant.
 - Session key used for encryption will be revealed on "Q-Day".
- Current traffic is exposed to quantum decryption in the future.



Cisco 8000 Series Secure Router PQC Ready

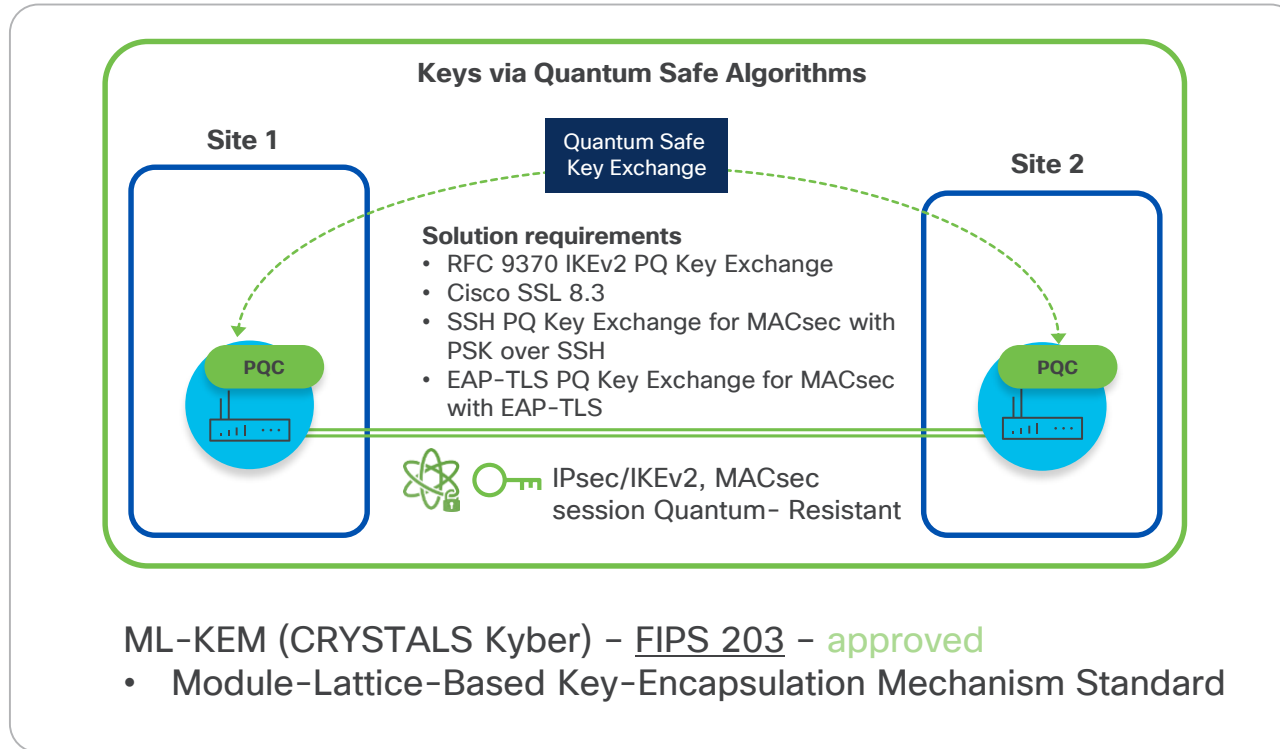
Support at @FCS



Post Quantum Cryptography (PQC) Solutions - PPK

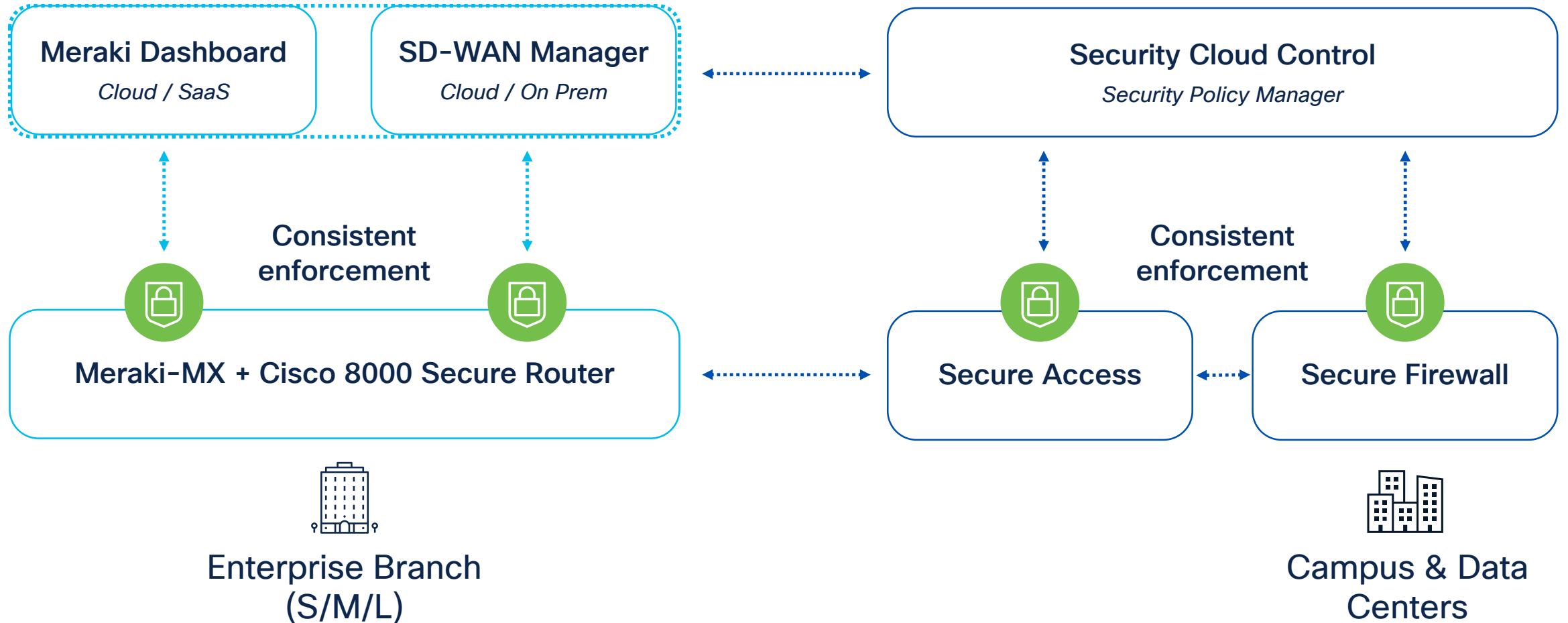
Cisco 8000 Series Secure Router PQC Ready

To be supported @post FCS



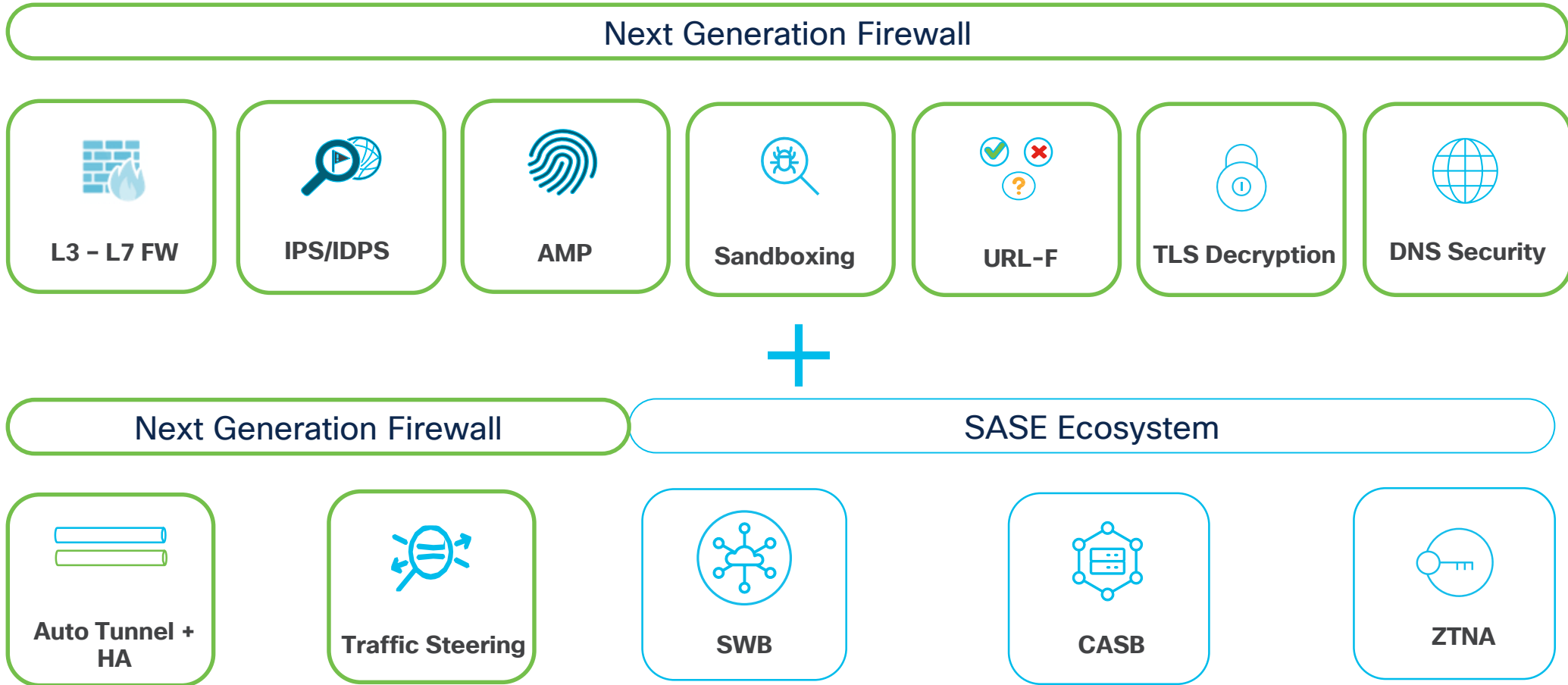
Post Quantum Cryptography (PQC) Solution – Quantum Safe Algorithms

Centralized Single Pane of Glass for Security Policy with consistent enforcement across all site



Secure Firewall embedded in the Secure Router

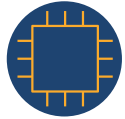
Consistent NGFW Capabilities



The Power of Cisco 8000 Series Secure Router

Hardware Innovation & Networking Capabilities

secure networking processor



HW accelerated Security & Networking

Secure Boot



Post-Quantum Safe (Future)

25GE WAN



Campus Router

HA w/ RPS



External Redundant Power Supply

Dying Gasp



Anticipate the unexpected

mGig/10GE



Driven by Wi-Fi 6E & 7

secure networking processor



Security

- **Inline Crypto**
- **PQC ready crypto engine**
- **Cisco Secure Firewall acceleration**
- **AI/ML engine**



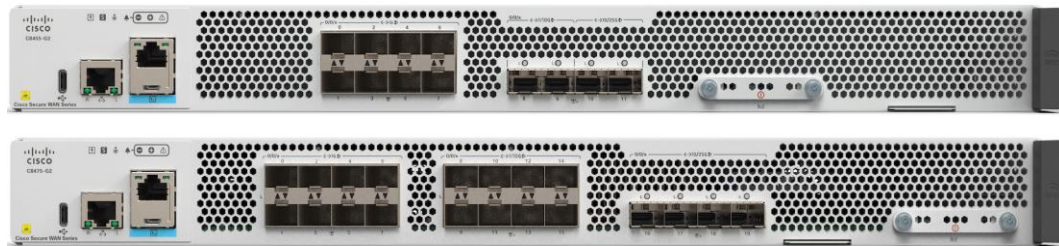
Networking

- **Integrated hardware accelerators**
- **Integrated Ethernet Controller - 1GE, mGig, 10GE, 25GE**
- **Performance defined Power - 30%+ power saving**
- **Programmable uCode - protect IP, feature parity**

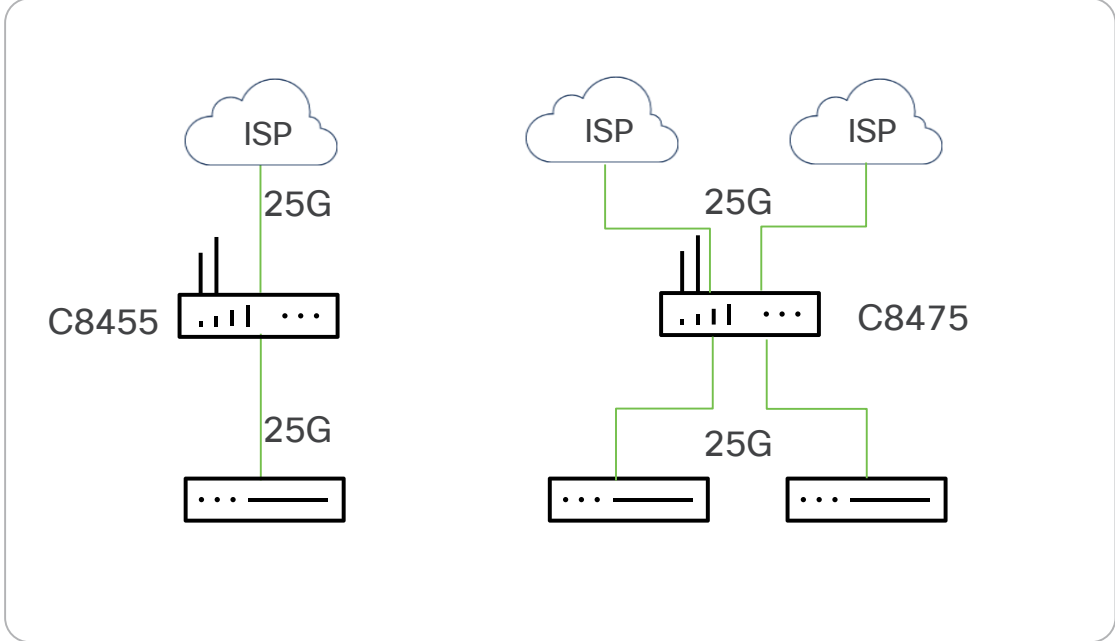
Foster security and networking convergence

Network Connectivity

10GE to 25GE migration with C8400

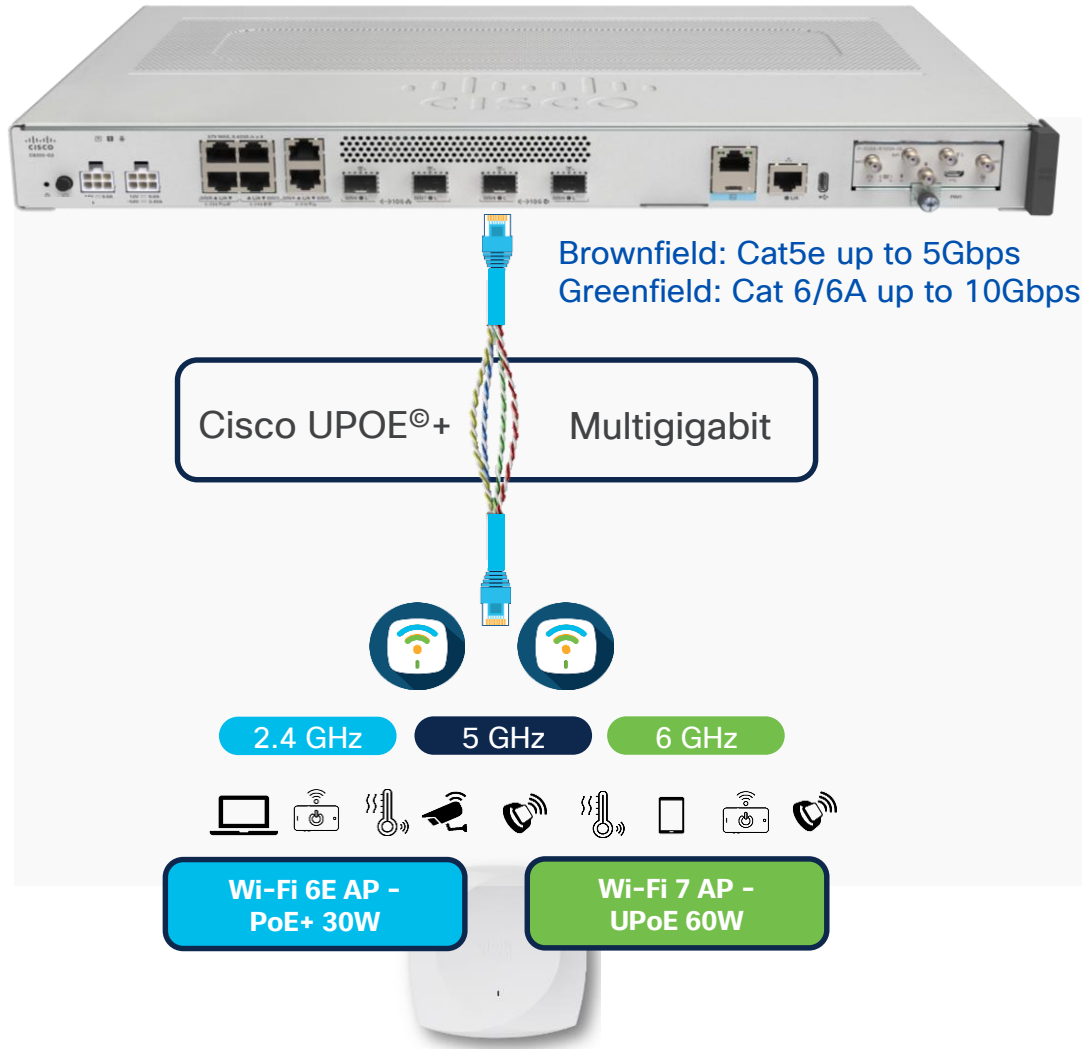


We have the right products for you



Multi-Gigabit Ethernet Capable Secure Router

Wi-Fi 6E & 7 driving mGig migration at branch



mGig Capabilities

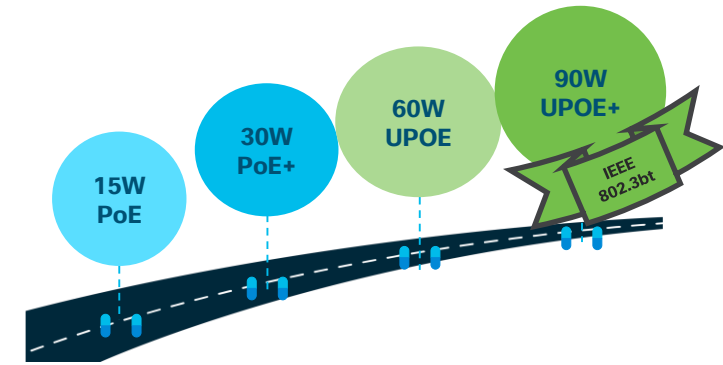
Model	1GE	2.5mGig	5mGig	10GE
C8231	4	4 1		2
C8235		8 2 2		2
C8355	2		4 4	4
C8375		4 2		2

Legend

- PoE+ Number of PoE+ port count
- UPoE+ Number of UPoE+ port count

Secure Router 'PoE' UP many things at branch

	C8161	C8231	C8235	C8355	C8375
Built-in PoE	4x L2				
Built-in PoE+	or 2x L2	1x L3	2x Flex L2/L3		
Built-in UPOE+			2x L3	2x L3, 2x Flex L2/L3	2x L3
PoE Switch Module					<u>C-SM-16P4M2X</u> , <u>C-NIM-8M</u>
Power Budget	80W	30W	120W	120W	360W (Redundant), 720W (Boost)



Access Point 6E/7
PoE+/UPOE+ (30W/60W)



Cellular Gateway
PoE+ (30W)



IP Phone
PoE/PoE+ (15W/30W)



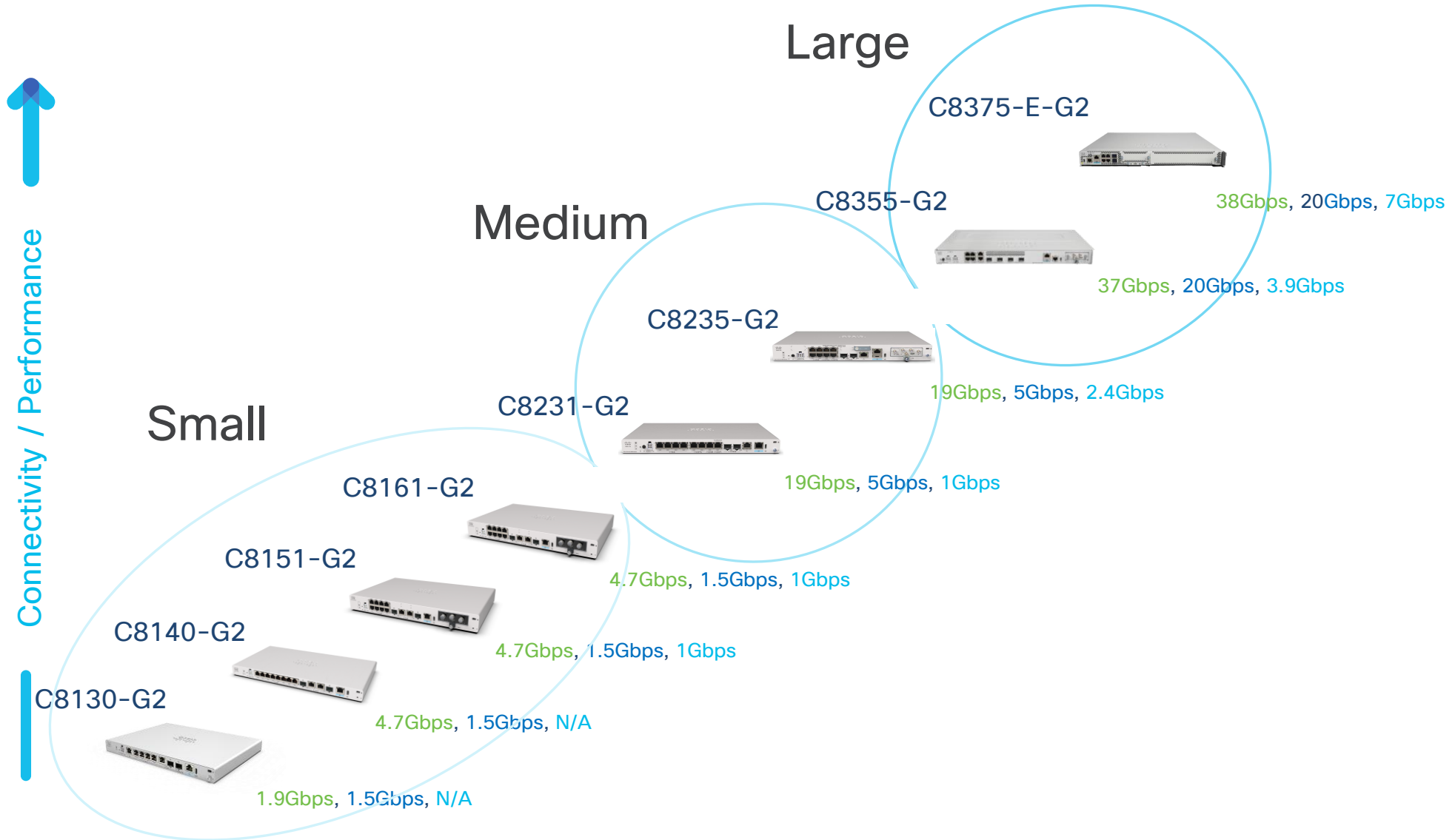
CCTV Camera
PoE+ (30W)



POS Terminal
PoE+ (30W)

Product Details

Branch



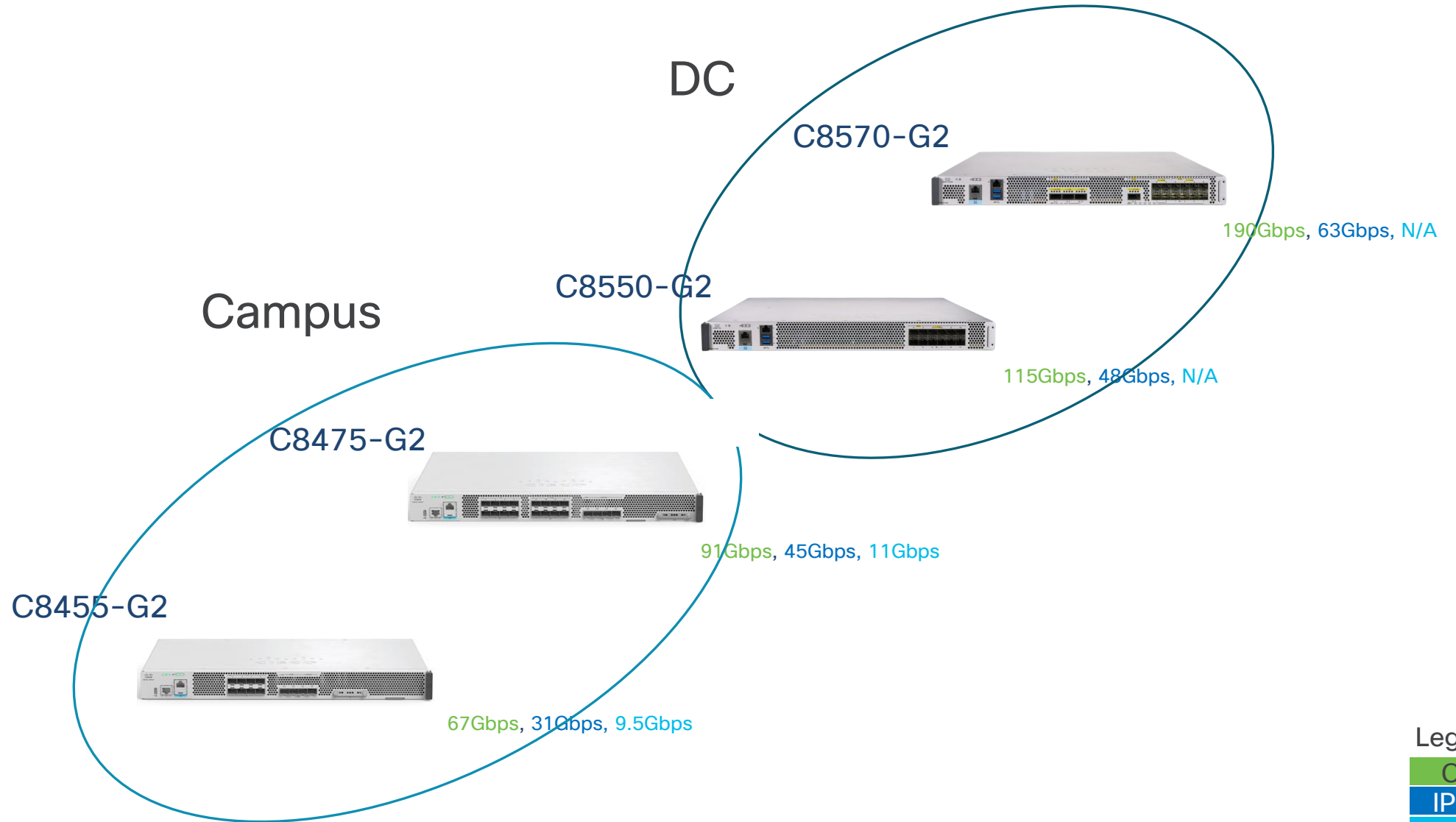
Legend

- CEF
- IPsec
- TP

Campus and DC



Connectivity / Performance







Legend



Small Branch C8100

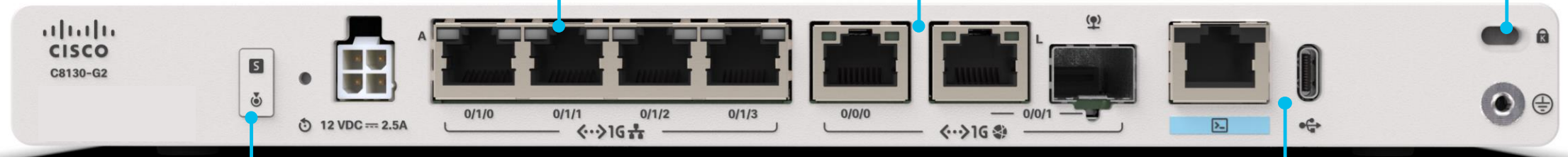
C8130-G2 Front View

Data Interfaces




- 2 x GE LAN (0/1/0 & 0/1/1) 
- 2 x GE Flex L2/L3 (0/1/2 & 0/1/3) 
- 1 x RJ45 GE WAN (0/0/0) 
- 1 x RJ45/SFP GE WAN (0/0/1) 

Physical Security


- Kensington Lock 
- Ground 



Power & Status



- Status LED 
- Blue Beacon LED 
- Reset button 
- Power connector

Management/USB Storage

- RJ45 Console 
- USB 3.0, Type C

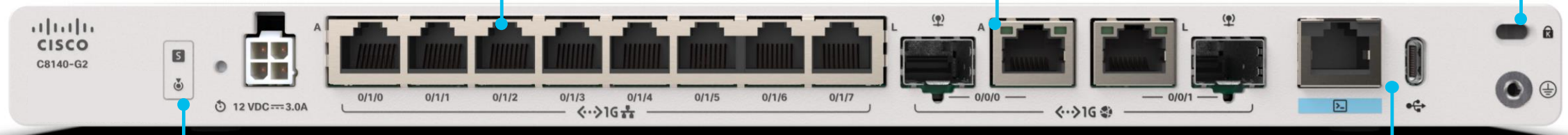
C8140-G2 Front View

Data Interfaces




- 6 x GE LAN (0/1/0 - 0/1/5) 
- 2 x GE Flex L2/L3 (0/1/6 & 0/1/7) 
- 2 x RJ45/SFP GE WAN (0/0/0 & 0/0/1) 

Physical Security


- Kensington Lock 
- Ground 



Power & Status

- Status LED 
- Blue Beacon LED 
- Reset button 
- Power connector

Management/USB Storage

- RJ45 Console 
- USB 3.0, Type C

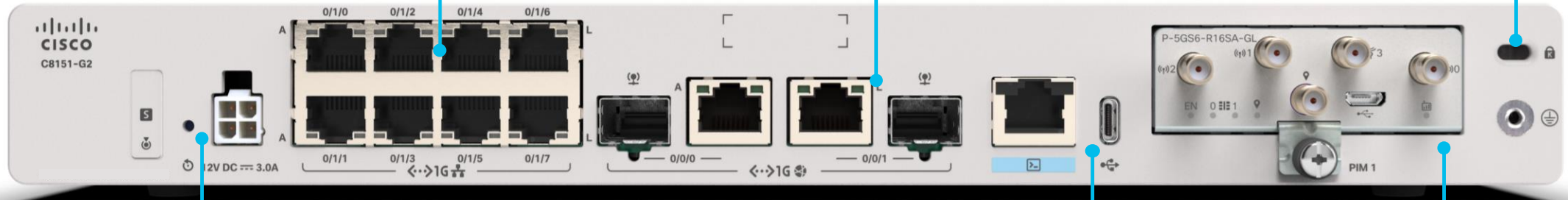
C8151-G2 Front View

Data Interfaces

- 6 x GE LAN (0/1/0 - 0/1/5)
- 2x GE Flex L2/L3 (0/1/6 & 0/1/7)
- 2 x RJ45/SFP GE WAN (0/0/0 & 0/0/1)

Physical Security

- Kensington Lock
- Ground



Power & Status

- Status LED
- Blue Beacon LED
- Reset button
- Power connector

Management/USB Storage

- RJ45 Console
- USB 3.0, Type C

Pluggable Interface Module

- 5G Standalone
- CAT 7 LTE

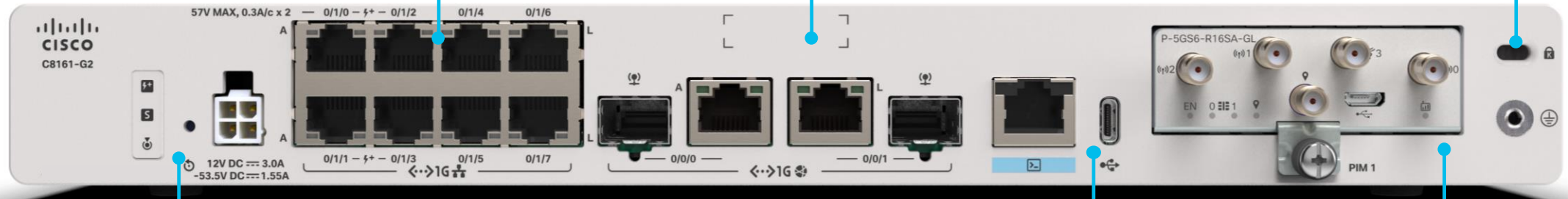
C8161-G2 Front View

Data Interfaces

- 6 x GE LAN (0/1/0 - 0/1/5)
- 2 x GE Flex (0/1/6 & 0/1/7)
- 4PoE or 2PoE+ Capable (0/1/0 - 0/1/3) ⚡+
- 2 x RJ45/SFP GE WAN (0/0/0 & 0/0/1) 🌐

Physical Security

- Kensington Lock 🔒
- Ground ⚡



Power & Status

- Status LED **S**
- Blue Beacon LED 🔔
- Reset button 🔄
- Power connector

Management/USB Storage

- RJ45 Console 📄
- USB 3.0, Type C

Pluggable Interface Module

- 5G Standalone
- CAT 7 LTE

C8100 Models at-a-glance







	C8130-G2	C8140-G2	C8151-G2	C8161-G2
Form Factor	Desktop	Desktop	Desktop	Desktop
L3 Ports	1xGE RJ45 + 1xGE RJ45/SFP	2xGE RJ45/SFP	2xGE RJ45/SFP	2xGE RJ45/SFP
L2 Ports	2xGE RJ45	6xGE RJ45	6xGE RJ45	6xGE RJ45
Flex L2/L3 Ports	2xGE RJ45	2xGE RJ45	2xGE RJ45	2xGE RJ45
Cellular WAN	via Cellular Gateway (CG)	via Cellular Gateway (CG)	PIM - 5G/CAT7 LTE or via CG	PIM - 5G/CAT7 LTE or via CG
Fan	Fanless	Fanless	Fanless	Fanless
PoE Ports, Power Budget	No	No	No	4xPoE or 2xPoE+, 80W
Power Supply (PS)	External, 30W/66W	External, 66W	External, 66W	External, 150W
PS Redundancy	w/ RPS Adaptor	w/ RPS Adaptor	w/ RPS Adaptor	w/ RPS Adaptor
SD-WAN	No	No	Yes	Yes
TE	No	No	Yes	Yes
Secure Firewall + TE	No	No	Yes	Yes

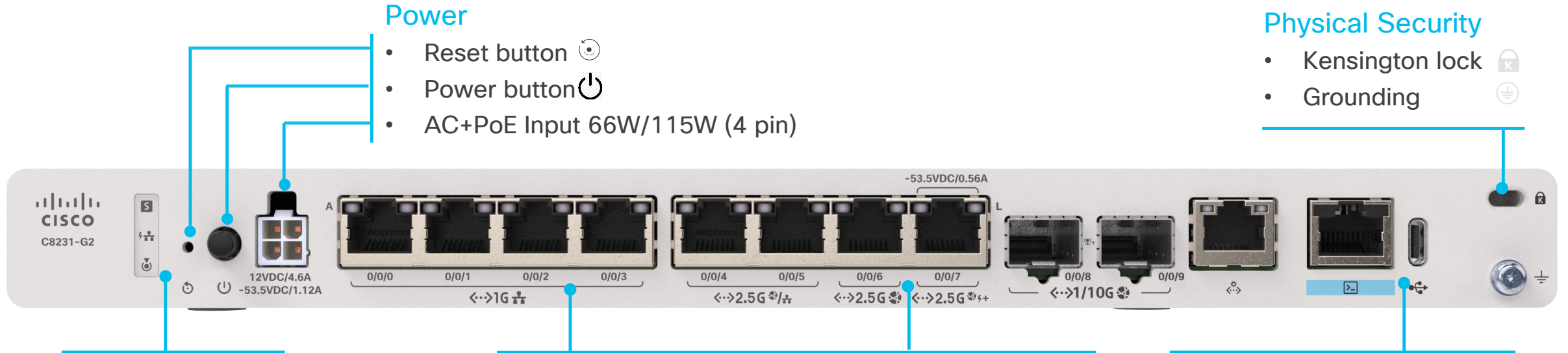
Medium/Large Branch

C8200 and C8300



C8231-G2 Front View

Legend



-  WAN (L3)
-  LAN (L2)
-  PoE+
-  UPoE+






Power

- Reset button 
- Power button 
- AC+PoE Input 66W/115W (4 pin)







Physical Security

- Kensington lock 
- Grounding 



Status LEDs

- Status LED 
- PoE LED 
- Blue beacon LED 

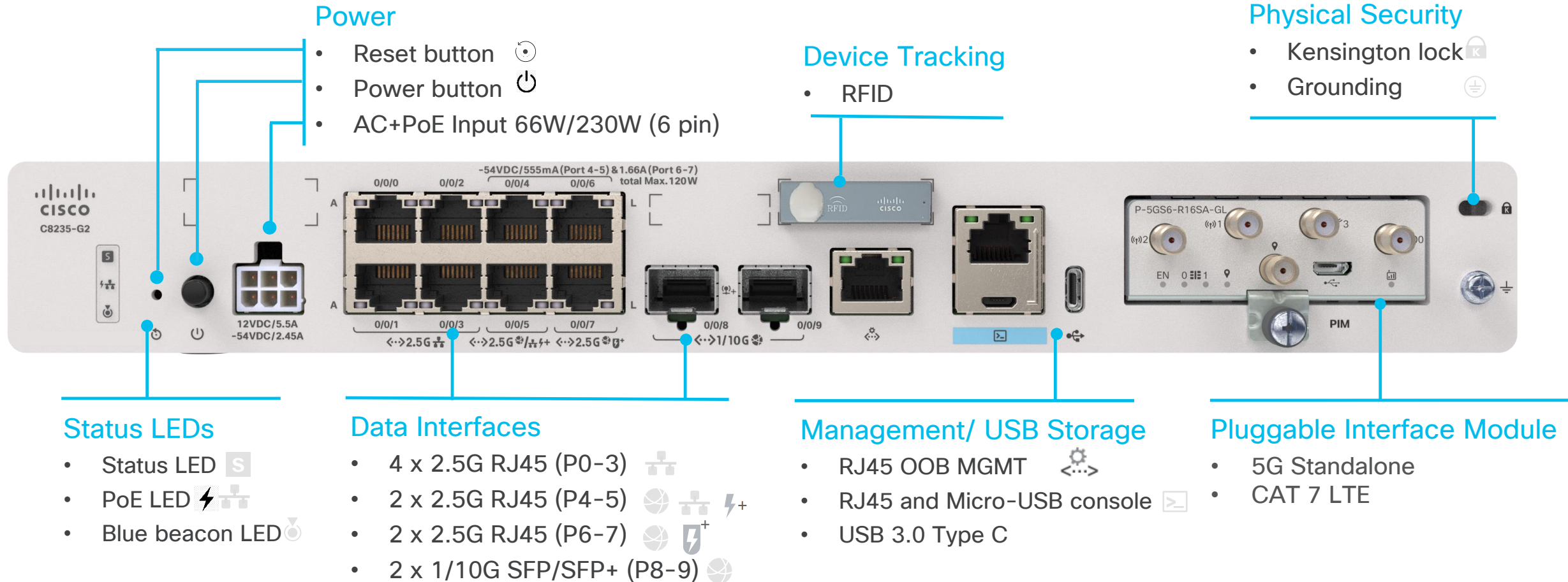
Data Interfaces

- 4 x 1G RJ45 (P0-3) 
- 2 x 2.5G RJ45 (P4-5)  
- 2 x 2.5G RJ45 (P6-7)   (P7)
- 2 x 1/10G SFP/SFP+ (P8-9) 

Management /USB Storage




- RJ45 OOB MGMT 
- RJ45 console 
- USB 3.0 Type C

C8235-G2 Front View









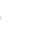




C8355-G2 Front View




Status LEDs

- Status LED 
- PoE LED 
- Blue beacon 

Data Interfaces

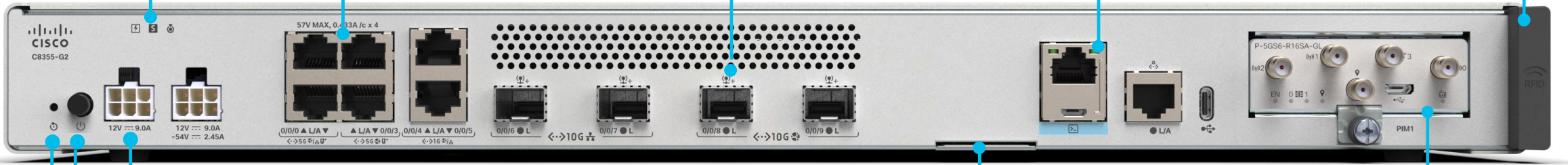
- 2x 5G RJ45 (P0-1)   
- 2x 5G RJ45 (P2-3)  
- 2x1G RJ45 (P4-5)  
- 2x10G SFP/SFP+ (P6-7)  
- 2x10G SFP/SFP+ (P8-9)  

Management /USB Storage

- RJ45 and Micro-USB console 
- RJ45 OOB MGMT 
- USB 3.0 Type C 

Device Tracking

- RFID



Power Supply

- AC+PoE Input 110W/230W (6 pin)
- Power button
- Reset button

Inventory





- Label Tray

Pluggable Interface Module





- 5G Standalone
- CAT 7 LTE

C8375-E-G2 Front View

Status LEDs

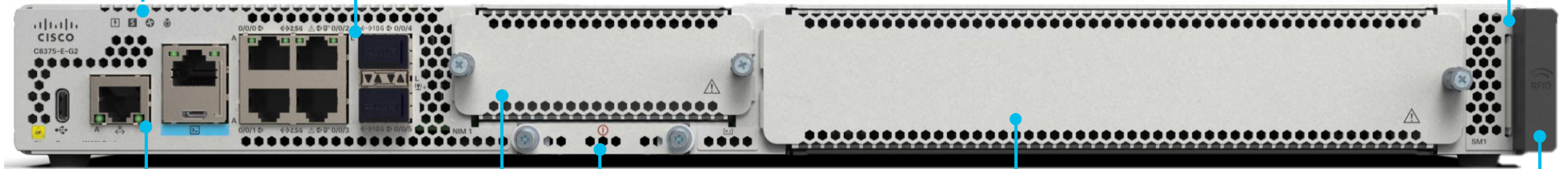
- Status LED 
- FAN LED 
- PoE LED & Blue beacon  

Data Interfaces




- 2 x 2.5G RJ45 (P0-1) 
- 2 x 2.5G RJ45 (P2-3)  
- 2 x 1/10G SFP/SFP+ (P4-5) 

Inventory


- Label Tray



Management /USB Storage

- USB 3.0 Type C 
- RJ45 OOB MGMT 
- RJ45 and Micro-USB console 

Network and Storage Modules

- NIM slot
- M.2 eUSB or SED 

Service Modules

- SM slot

Device Tracking

- RFID

C8375-E-G2 Rear View

Power supply Slot 1

- PSU Internal Fan
- AC/DC PSU

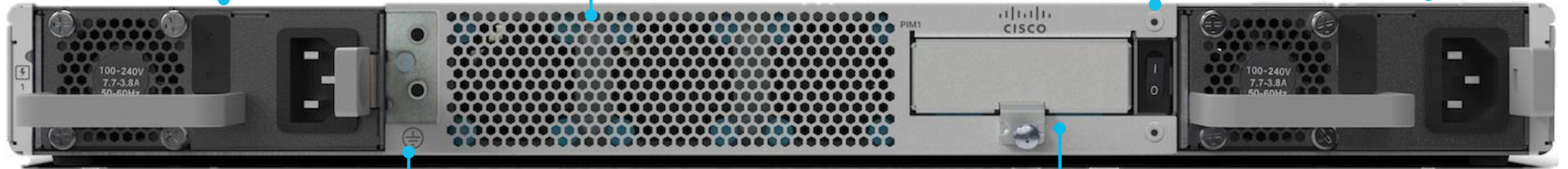
FAN

- 3 internal FANs
- Replaceable

Power ON/OFF switch

Power supply Slot 2

- PSU Internal FAN
- AC/DC PSU



Grounding

Pluggable Interface Module

- 5G Standalone
- CAT 7 LTE

Power Supply Specifications

- Power Supply Type : Internal
- AC unit : 400W
- DC Unit: 500W
- AC+PoE : 760W
- Max PoE Budget: 360W (redundant), 720W (Boost)
- 1+1 redundancy

C8300 Modules

C8375-E-G2



Ethernet LAN/WAN ^[1]	Cellular WAN ^[2]	TDM WAN	WAN + Voice
C-NIM-WAN-4S C-NIM-WAN-2X C-SM-16P4M2X C-NIM-4X (2x L3) C-NIM-8T (2x L3) C-NIM-8M(2x L3)	P-LTEA7-EAL P-LTEA7-NA P-LTEA7-JP P-5GS6-R16SA-GL	SM-X-1T3/E3 NIM-1T (Serial) NIM-2T (Serial) NIM-4T (Serial)	NIM-1MFT-T1/E1 NIM-2MFT-T1/E1 NIM-4MFT-T1/E1 NIM-8MFT-T1/E1 NIM-1CE1T1-PRI NIM-2CE1T1-PRI NIM-8CE1T1-PRI

ASYNC	DSL	SM-NIM Adaptor
NIM-16A NIM-24A SM-X-64A	NIM-VAB-A NIM-VA-B NIM-VAB-M NIM-4SHDSL-EA	C-SM-NIM-ADPT

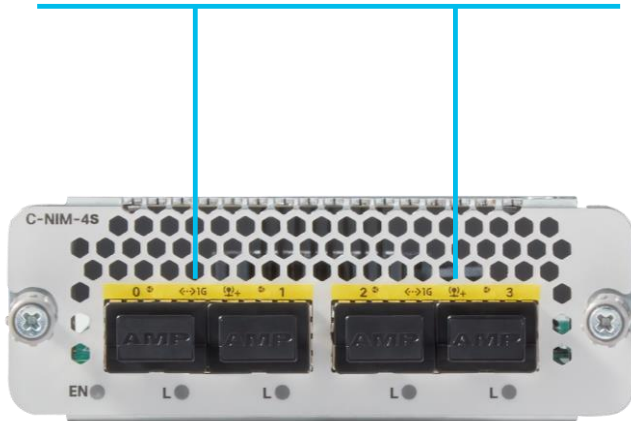
[1] MACsec capable modules

[2] Same PIM supported on C8355-G2, C8235-G2

New L3 WAN Modules

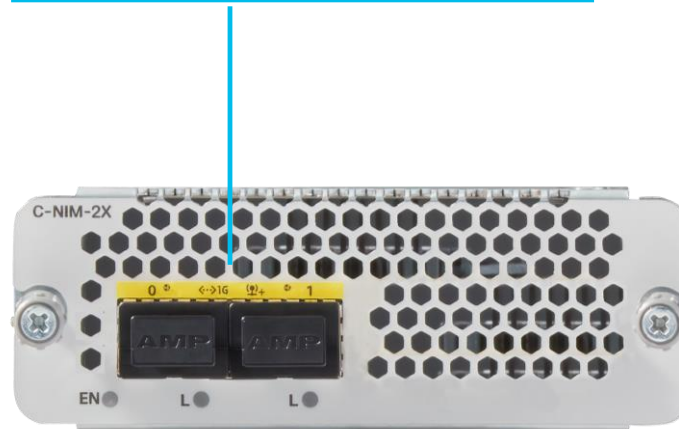
C-NIM-WAN-4S

- 4 x 1G SFP (WAN)



C-NIM-WAN-2X

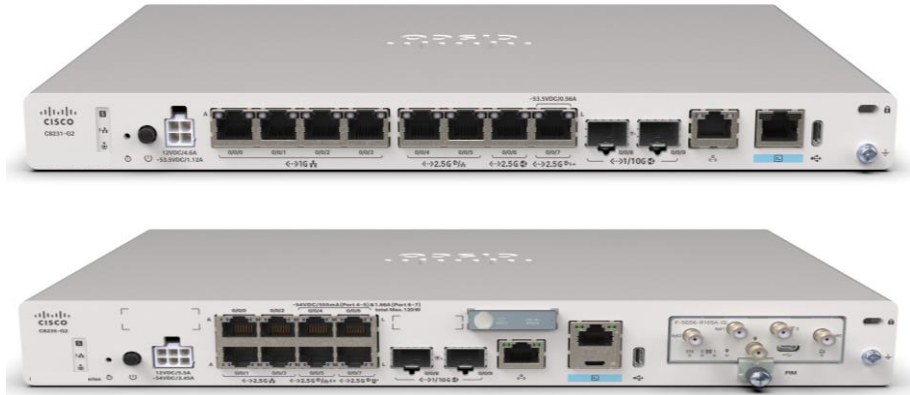
- 2 x 10G SFP+ (WAN)



Module Specifications

- Replacement for C-NIM-1X and C-NIM-2T
- Layer 3 feature parity with C-NIM-1X and C-NIM-2T
- 10 Gig and 1 Gig Variants
- 100 and 1000 Mbps support on C-NIM-WAN-4S
- WAN MACsec (256-bit) on all the ports

C8200 Models at-a-glance



	C8231-G2	C8235-G2
Form Factor	Desktop	Desktop
L3 Ports	2x10/1GE SFP+ + 2x2.5mGig RJ45	2x10/1GE SFP+ + 2x2.5mGig RJ45
L2 Ports	4xGE RJ45	4x2.5mGig RJ45
Flex L2/L3 Ports	2x2.5mGig RJ45	2x2.5mGig RJ45
MACsec	All built-in ports	All built-in ports
Cellular WAN	via CG	PIM - 5G/CAT7 LTE or via CG
Fan	Fanless	Fanless
PoE Ports, Power Budget	1x2.5mGig PoE+, 30W	2x2.5mGig PoE + 2x2.5mGig UPoE+, 120W
Power Supply (PS)	External, 66W AC (default), 115W AC (PoE)	External, 66W AC (default), 230W AC for PoE
PS Redundancy	w/ RPS Adaptor	w/ RPS Adaptor
SD-WAN	Yes	Yes
TE	Yes	Yes
Secure Firewall + TE	Yes	Yes

C8300 Models at-a-glance



	C8355-G2	C8375-E-G2
Form Factor	1RU	1RU
L3 Ports	2x10/1GE SFP+ + 2x5mGig RJ45	2x10/1GE SFP+ + 4x2.5mGig RJ45
L2 Ports	2x10G/1GE SFP+	N/A
Flex L2/L3 Ports	2x5mGig RJ45 + 2x1GE RJ45	N/A
NIM/SM	N/A	Yes
MACsec	All built-in ports	All built-in ports & capable NIM & SM
Cellular WAN	PIM - 5G/CAT7 LTE or via CG	PIM - 5G/CAT7 LTE or via CG
Fan	Fanless	Field-replaceable FAN Tray
PoE Ports, Power Budget	4x5mGig UPoE+, 120W	2x 2.5mGig UPoE+, 360W (redundant), 720W (Boost)
Power Supply (PS)	External, 110W AC (default), 230W AC (PoE)	Internal, 400W AC (default), 760W AC (PoE), 500W DC
PS Redundancy	w/ RPS Adaptor (default)	default
SD-WAN	Yes	Yes
TE	Yes	Yes
Secure Firewall + TE	Yes	Yes

Campus

C8400

C8455-G2 Front View

Data Interfaces

- 8 x 1GE SFP
- 2 x 1GE / 10GE SFP+
- 2 x 10GE / 25GE SFP28

User Centric

- Label tray
- RFID



Management/USB

- RJ45 & Micro USB Console
- RJ45 Mgmt Interface
- USB 3.0, Type C

Storage

- M2.SSD

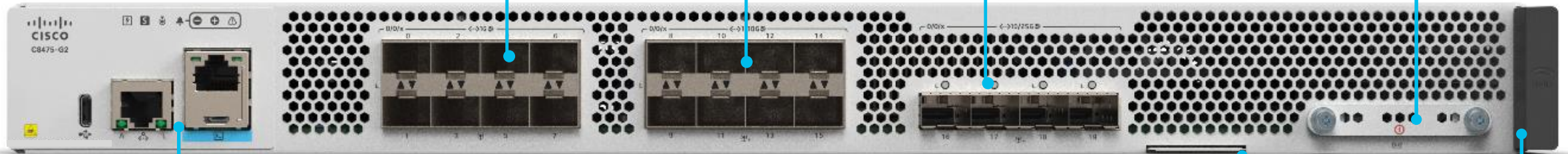
C8475-G2 Front View

Data Interfaces

- 8 x 1GE SFP
- 8 x 1GE / 10GE SFP+
- 4 x 10GE / 25GE SFP28

Storage

- M2.SSD M.2



Management/USB

- RJ45 & Micro USB Console 📧
- RJ45 Mgmt Interface ⚙️
- USB 3.0, Type C 🔌

User Centric

- Label tray
- RFID RFID

C8400 Models at-a-glance



	C8455-G2	C8475-G2
Form Factor	1RU	1RU
L3 Ports	2x25/10GE SFP28 + 2x10/1GE SFP+ + 8x1GE SFP	4x25/10GE SFP28 + 8x10/1GE SFP+ + 8x1GE SFP
L2 Ports	N/A	N/A
Flex L2/L3 Ports	N/A	N/A
MACsec	All built-in ports	All built-in ports
Fan	Field-replaceable FAN Tray	Field-replaceable FAN Tray
Power Supply Options	AC, DC, HVDC	AC, DC, HVDC
PS 1+1 Redundancy	default	default
SD-WAN	Yes	Yes
TE	Yes	Yes
Secure Firewall + TE	Yes	Yes

Data Center


C8500

C8550-G2 Front View

User Centric




- Label tray 

Data Interface

- Bay0: 12x 1/10GE SFP+ 



Management/USB




- RJ45 & Micro USB Console 
- RJ45 Mgmt Interface 
- USB 3.0, Type C 

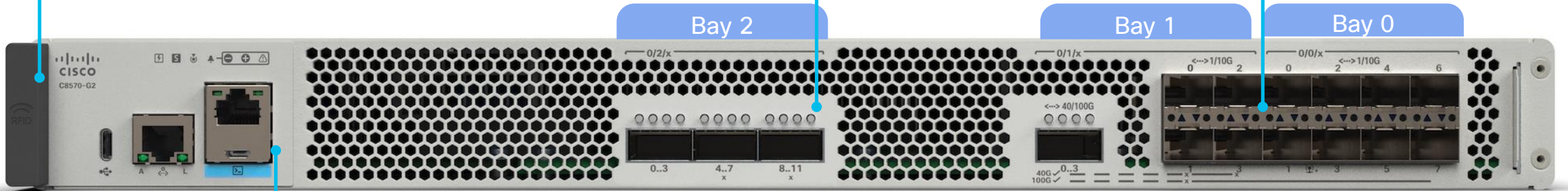
C8570-G2 Front View

User Centric




- Label tray 

Data Interface

- Bay0: 8x 1/10GE SFP+ 
- Bay1: 4x 1/10GE SFP+ or 1x40/100GE QSFP 
- Bay2: 3x 40GE QSFP or 1x 100GE QSFP 



Management/USB

- RJ45 & Micro USB Console 
- RJ45 Mgmt Interface 
- USB 3.0, Type C 

C8500 Models at-a-glance



	C8550-G2	C8570-G2
Form Factor	1RU	1RU
L3 Ports	12x10GE SFP+	2x100/40GE QSFP + 2x40GE QSFP + 12x10GE SFP+ (max 240G)
L2 Ports	N/A	N/A
Flex L2/L3 Ports	N/A	N/A
MACsec	All built-in ports	All built-in ports
Fan	Field-replaceable FAN Tray	Field-replaceable FAN Tray
Power Supply Options	AC, DC	AC, DC
PS 1+1 Redundancy	default	default
SD-WAN	Yes	Yes
TE	Yes	Yes
Secure Firewall	N/A	N/A

Migration

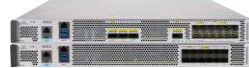
Lead WAN Refresh with Cisco 8000 Series Secure Router

IOS XE 17.15.3

Data Center



C8500-12X4QC
C8500-12X



C8570-G2
C8550-G2



C8500L-8S4X



C8475-G2
C8455-G2

Campus

Large



C8300-1N1S-4T2X
C8300-1N1S-6T



C8375-E-G2



C8355-G2

Medium



C8200-1N-4T
C8200L-1N-4T



C8235-G2
C8231-G2

Small



ISR1K
(C1111/1121/1161
Ethernet SKUs)

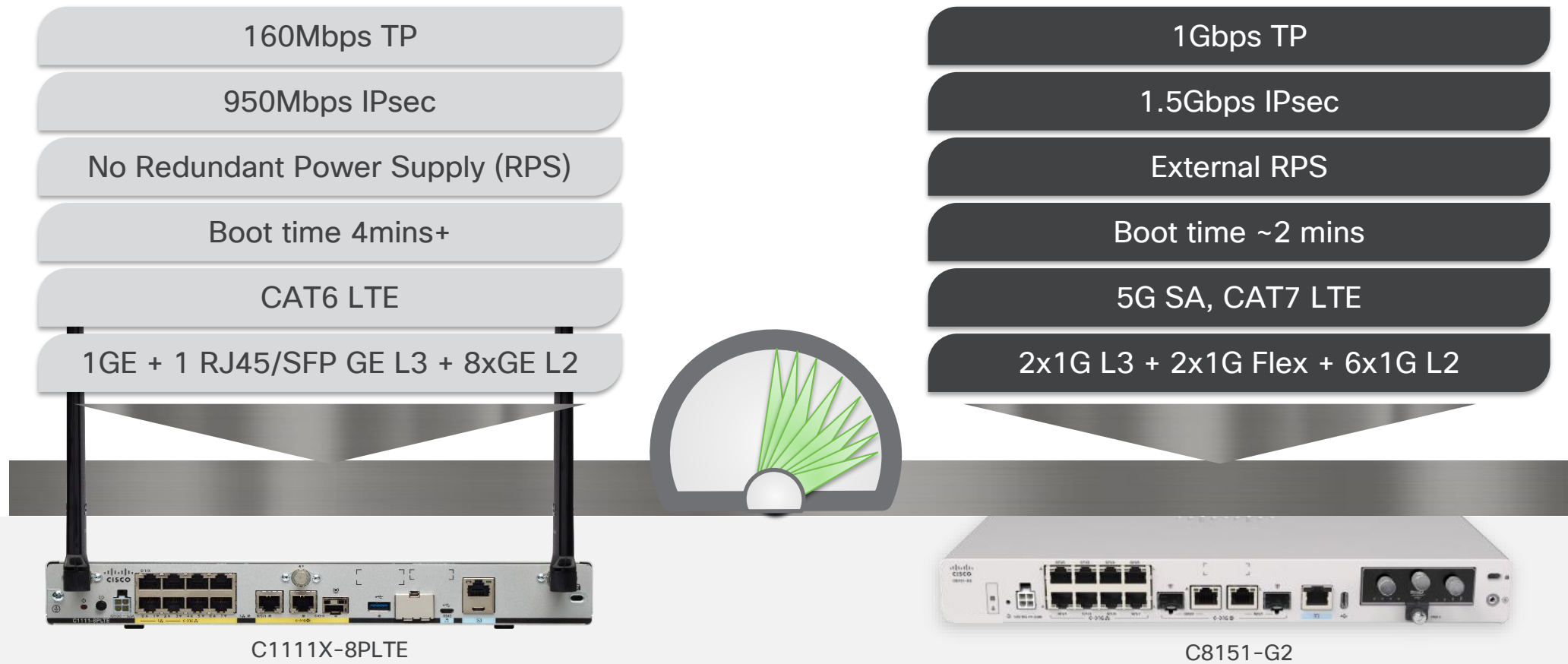


C8161-G2
C8151-G2
C8140-G2
C8130-G2

Branch

IOS XE 17.18.1

C1111X-8P and C8151-G2 Comparison



C8200L and C8231-G2 Comparison

No Threat Protection (TP)

450Mbps IPsec

No Redundant Power Supply (RPS)

No MACsec

Slots: 1NIM, 1PIM

2x1G SFP + 2x1G RJ45

1Gbps TP

5Gbps IPsec

External RPS

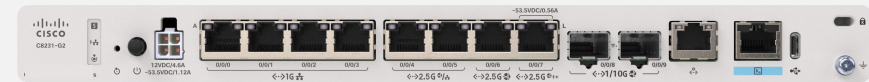
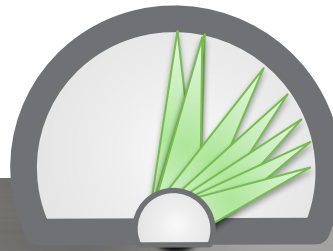
WAN/LAN MACsec

Slots: ALL built-in

2x10G + 2x2.5mG WAN + 2x2.5mG Flex
+ 4x1G LAN



C8200L-1N-4T



C8231-G2

C8200 and C8235-G2 Comparison

990Mbps TP

918Mbps SD-WAN AAR

No PoE

No MACsec

Slots: 1NIM, 1PIM

2x1G SFP + 2x1G RJ45

2.4Gbps TP

4Gbps SD-WAN AAR

120W PoE Power Budget

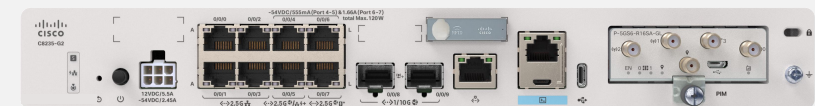
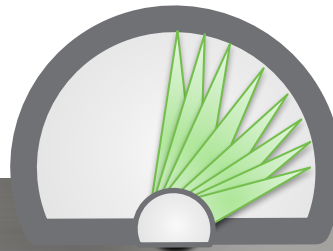
WAN/LAN MACsec

Slots: ALL built-in ports + PIM

2x10G + 2x2.5mG L3 + 2x2.5mG Flex +
4x2.5mG L2



C8200-1N-4T



C8235-G2

C8300-1N1S-6T and C8355-G2 Comparison

2.3Gbps TP

1.8Gbps SD-WAN AAR

No Redundant Power Supply (RPS)

No MACsec

Slots: 1NIM, 1SM

2x1G SFP + 6x1G RJ45

3.9Gbps TP

4Gbps SD-WAN AAR

External RPS

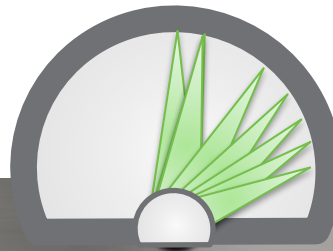
WAN/LAN MACsec

Slots: All built-in ports + PIM

2x10G + 2x5mG L3 + 2x5mG + 2X1G Flex + 2x10G L2



C8300-1N1S-6T

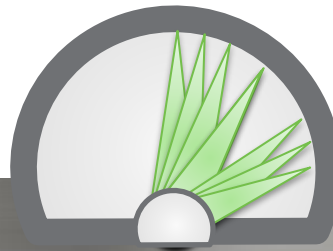


C8355-G2

C8300-1N1S-4T2X and C8375-G2 Comparison

- 2.9Gbps TP
- 8.3Gbps IPsec
- 1+1 PSU Redundancy
- No MACsec
- Slots: 1NIM, 1SM
- 2x10G SFP + 4x1G RJ45

- 7Gbps TP
- 20Gbps IPsec
- 1+1 PSU Redundancy
- WAN/LAN MACsec
- Slots: 1NIM, 1SM, 1PIM
- 2x10G + 4x2.5mG

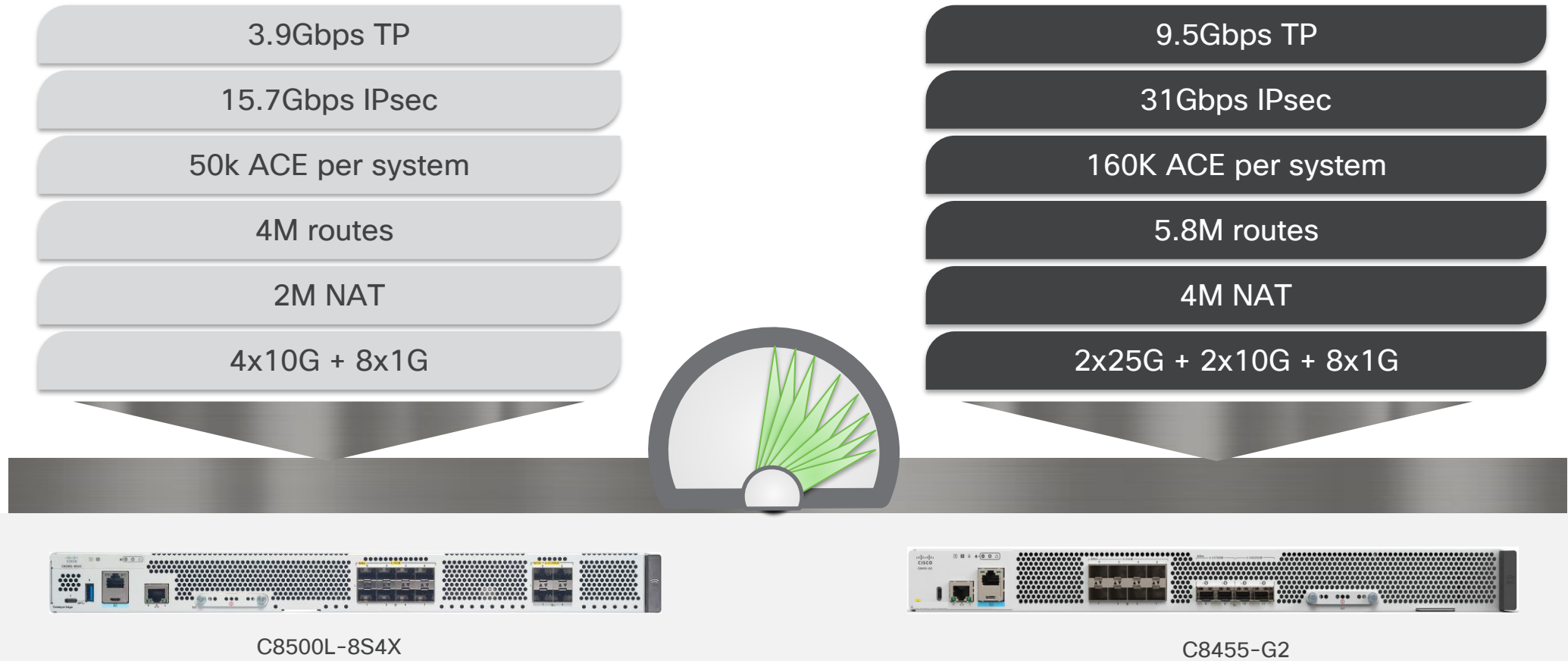


C8300-1N1S-6T



C8375-G2

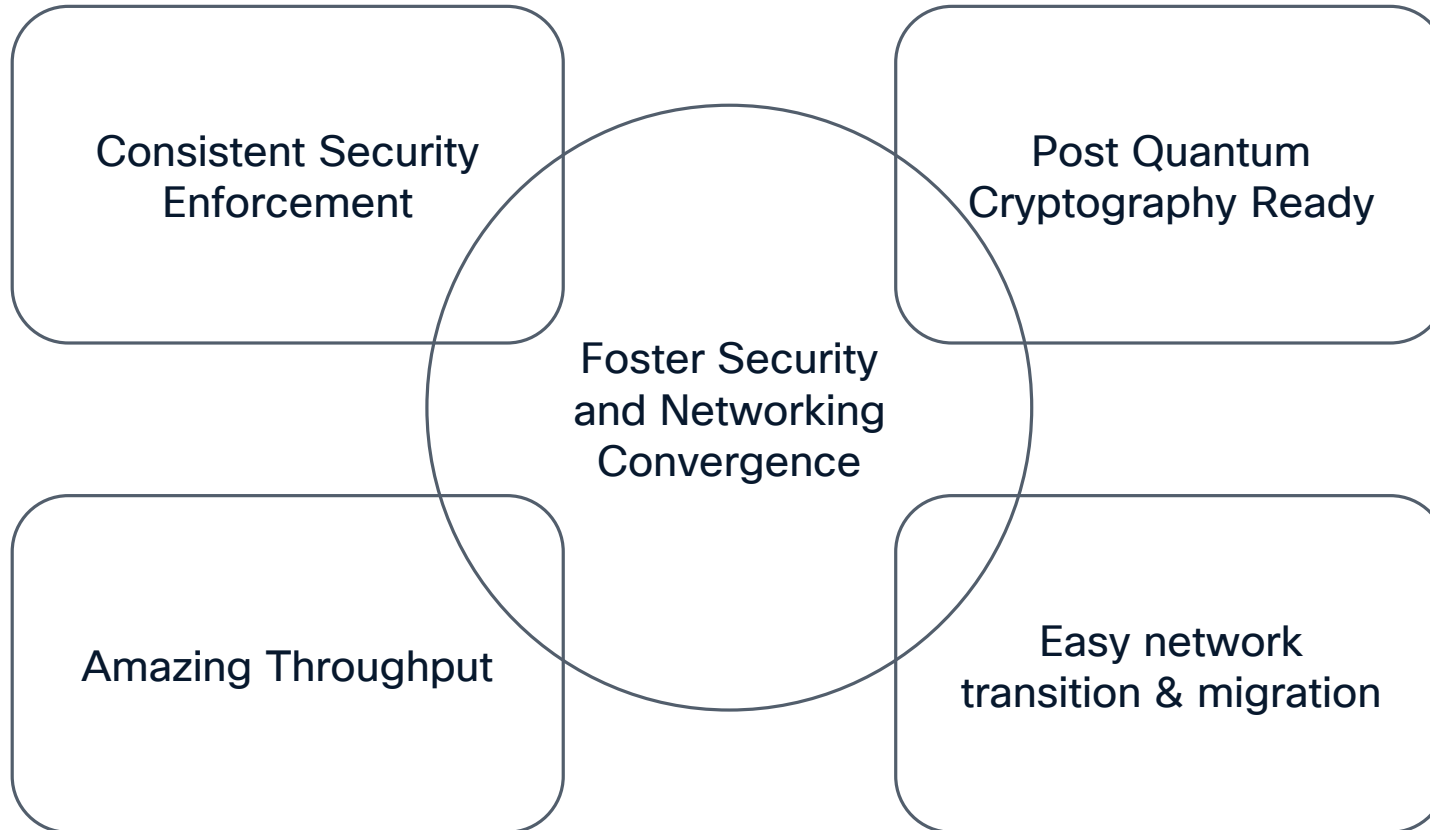
C8500L-8S4X and C8455-G2 Comparison



Summary

Wrap-Up

The industry's most advanced secure router



Complete your session evaluations



Complete a minimum of 4 session surveys and the Overall Event Survey to be entered in a drawing to win 1 of 5 full conference passes to Cisco Live 2026.



Earn 100 points per survey completed and compete on the Cisco Live Challenge leaderboard.



Level up and earn exclusive prizes!



Complete your surveys in the Cisco Live mobile app.

Continue your education



Visit the Cisco Showcase for related demos



Book your one-on-one Meet the Engineer meeting



Attend the interactive education with DevNet, Capture the Flag, and Walk-in Labs



Visit the On-Demand Library for more sessions at www.CiscoLive.com/on-demand

Contact me at: jayang@cisco.com

Thank you

CISCO Live !

