

Simplifying Campus Networking with Agentic AI

Denver Tech Day 2026

Clint Sorensen
Networking Engineer

Preston Kilburn
Solutions Engineer



Cisco Tech Day
Denver

Thank you to our sponsors!



World Wide Technology, Inc.

PRESIDIO®



Where Technology Means More®



Announced at Cisco Live US 2025

AI-Ready Data Centers



Full-Stack AI Infrastructure

- Unified Nexus Dashboard (Jul 2025)
- Cisco Secure AI Factory/NVIDIA (Mar 2025)
- Switch Compensating Controls (Aug 2025)

Fusing Security into the Network: Hybrid Mesh Firewall

- Firewall 6100 Series (Oct 2025)
- Intent-based Policy (Aug 2025)
- ACI support for Hybrid Mesh Firewall (Oct 2025)

Security for Agentic AI

- AI Defense Momentum

Service Provider Momentum

- New Cisco 8000 Routers (Nov 2025)
- New AI capabilities in Crosswork (Jun 2025)

Future-Proofed Workplaces



Operational Simplicity Powered by AI

- Agentic Ops (AI Assistant, AI Canvas) (Jun 2025)
- Unified Platform (Jul 2025)
- End-to-End Assurance (Jun 2025)

Scalable Devices Ready for AI

- Cisco C9350 and C9610 Smart Switches (Jun 2025)
- Cisco 8000 Secure Routers (Jun 2025)
- Industrial Switches (Jun 2025)
- Wi-Fi 7 Expansion + Campus Gateway (Jun 2025)
- Ultra-Reliable Wireless Backhaul (Jul 2025)
- Firewall 200 Series (Oct 2025)

Fusing Security into the Network: UZTNA

- Agentic AI
- Simplified SASE (Aug 2025)

AI Experiences

- AI Employee and Customer Experiences (Jun 2025)

Digital Resilience



End-to-End Assurance and Observability

- Observability for AI (Sep 2025)
- Splunk ITSI + ThousandEyes (Mar 2025)
- Splunk ITSI for Network Health (Sep 2025)
- Splunk Observability with Assurance (Dec 2025)

Security Operations

- AppDynamics and Splunk ES Integration (Mar 2025)
- AI Assistant for Splunk ES (Feb 2025)
- Cisco Firewall Logs ▶ Splunk (No Addl Cost) (Jul 2025)

Data Platform

- Federated Analytics (Oct 2025)
- AI-powered Value Realization (Sep 2025)
- Splunk PODs (Aug 2025)

Announced at Cisco Live Amsterdam 2026

From silicon to software, from data center to workplace, Cisco is delivering the integrated platform enterprises need to build, secure, and operate AI at scale. Our innovations across networking, security, collaboration, observability, and data converge around 3 strategic pillars.

AI-Ready Data Centers

- **Silicon One G300 & new systems:** 102.4 Tbps switching with Intelligent Collective Networking — 33% higher utilization, 28% faster job completion — in liquid-cooled designs that improve energy efficiency by nearly 70%
- **Nexus One:** Unified management across silicon, systems, optics, and software with native Splunk integration for in-place analytics and data sovereignty
- **1.6T & 800G optics:** New Linear Pluggable Optics cut module power by 50% and total system power by 30%
- **Secure AI Factory expansion:** VAST Data integration for real-time agentic data pipelines, Isovalent private networks for Kubernetes multi-tenancy, and turnkey AI PODs now orderable
- **AgenticOps for data center networking:** AI Canvas enables guided, human-in-the-loop troubleshooting and optimization across AI fabrics
- **Cisco Unified Edge:** First-to-market AI-ready edge platform with zero-touch deployment and fleet-wide observability

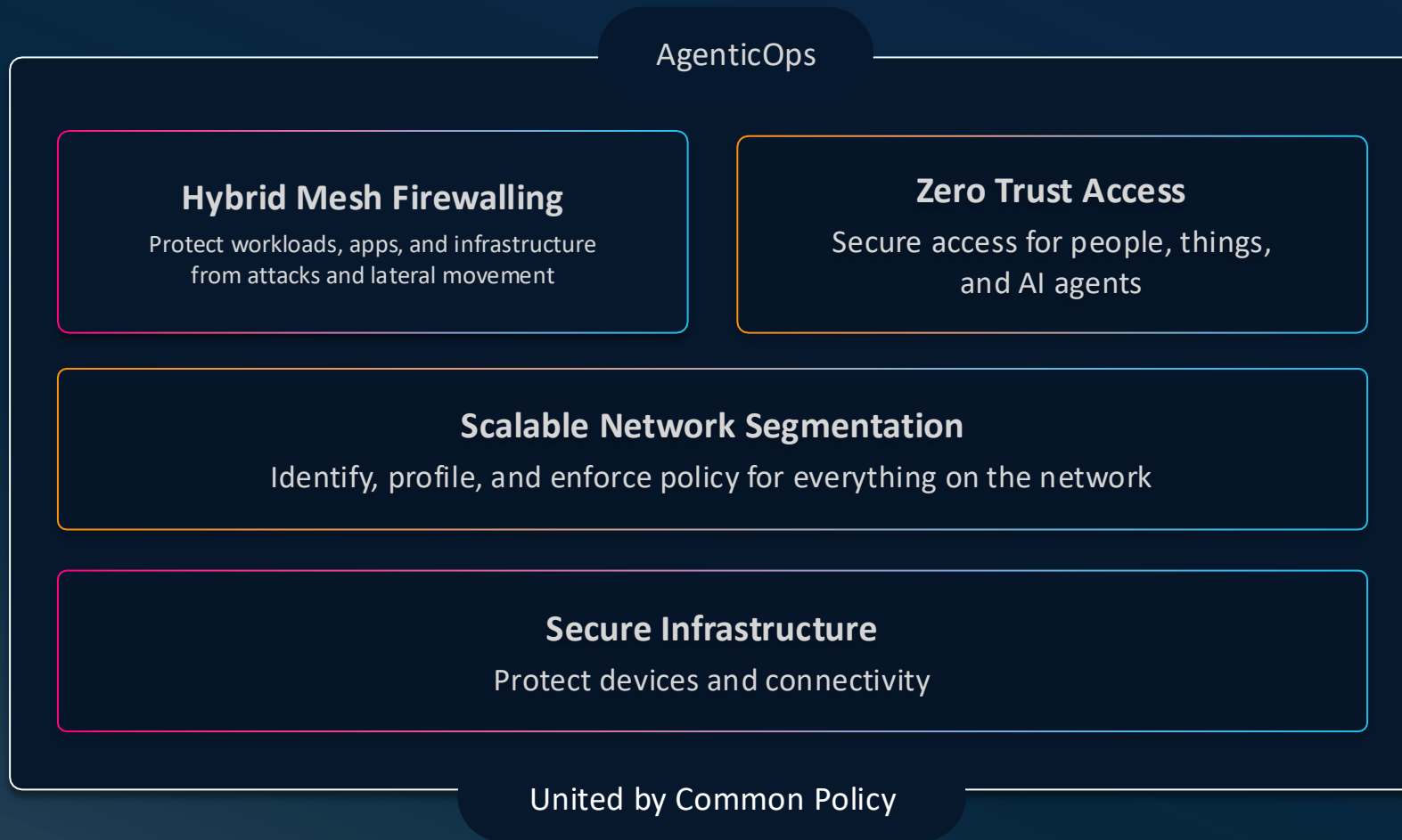
Future-Proofed Workplaces

- **AgenticOps across networking:** Autonomous troubleshooting and proactive optimization expanding to campus, branch, and industrial environments
- **Post-quantum cryptography:** Industry-first full-stack PQC in IOS XE 26 across smart switches and secure routers — protecting against "harvest now, decrypt later" threats
- **AI-aware SASE:** Intent-based inspection of agentic traffic, MCP visibility, and AI traffic optimization to keep agentic workflows safe and reliable
- **Webex AI innovations:** Speech-to-speech Translator Agent, AI Assistant integrations with Microsoft and Amazon ecosystems, deepfake detection, and on-premises AI PODs for deployment flexibility
- **Cisco Spaces & smart buildings:** Healthcare indoor navigation, ultra-wideband asset tracking (<1m precision), medical IoT via Sensor Connect, and Project Edison for next-gen power distribution
- **Contact Center AI:** AI Routing dynamically matches customers to human or AI agents in real time; AI Forecasting optimises staffing across blended workforces

Digital Resilience

- **AI Defense — biggest update since launch:** AI BOM and MCP Catalog for supply chain governance, advanced red teaming, and real-time agentic guardrails to detect manipulation and poisoned tools
- **Identity-driven & intent-based security:** Risk-based firewall policies via Identity Intelligence; intent-based multi-vendor policy management reducing redundant rules by 80%
- **XDR Instant Attack Verification:** Agentic AI investigates and confirms incidents across endpoint, network, cloud, and identity in under 30 seconds
- **Splunk ES Premier (GA):** Unifies SIEM, SOAR, and UEBA with new AI agents for triage, malware reversal, and automated playbook authoring
- **Data Fabric & AI Canvas:** Sovereign-ready data management with federated search, hosted AI models, and natural-language operations via generative UI
- **Full-stack observability:** ThousandEyes + Splunk Observability Cloud integration with AI Agent Monitoring for agentic workloads; Critical National Services Centers now live in four European countries

Cisco's Secure Networking Framework



- ✓ Identity-first
- ✓ Continuously verified
- ✓ Enterprise-wide policies
- ✓ Comprehensive threat intel
- ✓ Distributed Enforcement



AI-Ready Data Centers



Future-Proofed Workplaces

Secure Global Connectivity



Digital Resilience

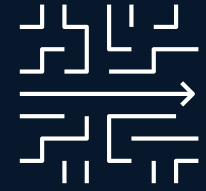


Accelerated by Cisco AI



Architecture for the AI-Ready secure network

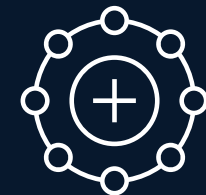
Simplified operations
powered by *AgenticOps*



Security
fused into the network



Scalable devices
ready for AI



Secure networking for the AI era

Simplified operations powered by AgenticOps

1 New AgenticOps capabilities

2 Cloud management of industrial switches

Security fused into the network

3 Security service insertion

4 Resilient, post-quantum-ready security

Scalable devices purpose-built for AI

5 Expanded secure routers and wireless gateways for every site

Cisco AgenticOps

Cross-domain telemetry

Ensemble of models and domain expertise

Agentic capabilities

Purposeful interactions



Cisco/Splunk dashboard **GA**

AI Assistant **GA**

AI Canvas **Early Access**

Cisco Cloud Control **Early Access**

Other Applications **Coming Soon**

CCIE-level expertise across your network 24/7

New AgenticOps capabilities for enterprise networking

Autonomous Troubleshooting

Delivers credible root cause
and remediation.
In minutes.

Continuous Optimization

Keeps the network
in its best state.
Automatically.

Trusted Validation

Makes every change
safer.
Predictably.

Powered by deterministic execution and deep reasoning

Platform capabilities to drive AgenticOps

Expanding end-to-end intelligence



How can I help today?

Choose a suggestion or use the text field to ask a question. I have limitations and won't always get it right, but your feedback will help me improve.

What's changed since I last logged in?

How do I fix a bad internet connection alert?

List any firmware updates for my routers

Show me the top 10 most utilized APs

AI Assistant for Catalyst Center

Beta Feb 2026

Intelligent workflows at scale

A screenshot of the AI Assistant interface showing a workflow creation process. The main area displays a flowchart with steps like 'Check Managed Alerts', 'Get Organization Networks', and 'Check Unmonitored Networks Exist'. A sidebar on the left lists various activities and logic blocks. On the right, a chat window shows a conversation with the AI Assistant, including a 'Workflow Plan' for 'Deploy ThousandEyes Agent to Unmonitored Meraki Network' with details on required inputs and expected final outputs.

AI-powered Agentic Workflow Creation

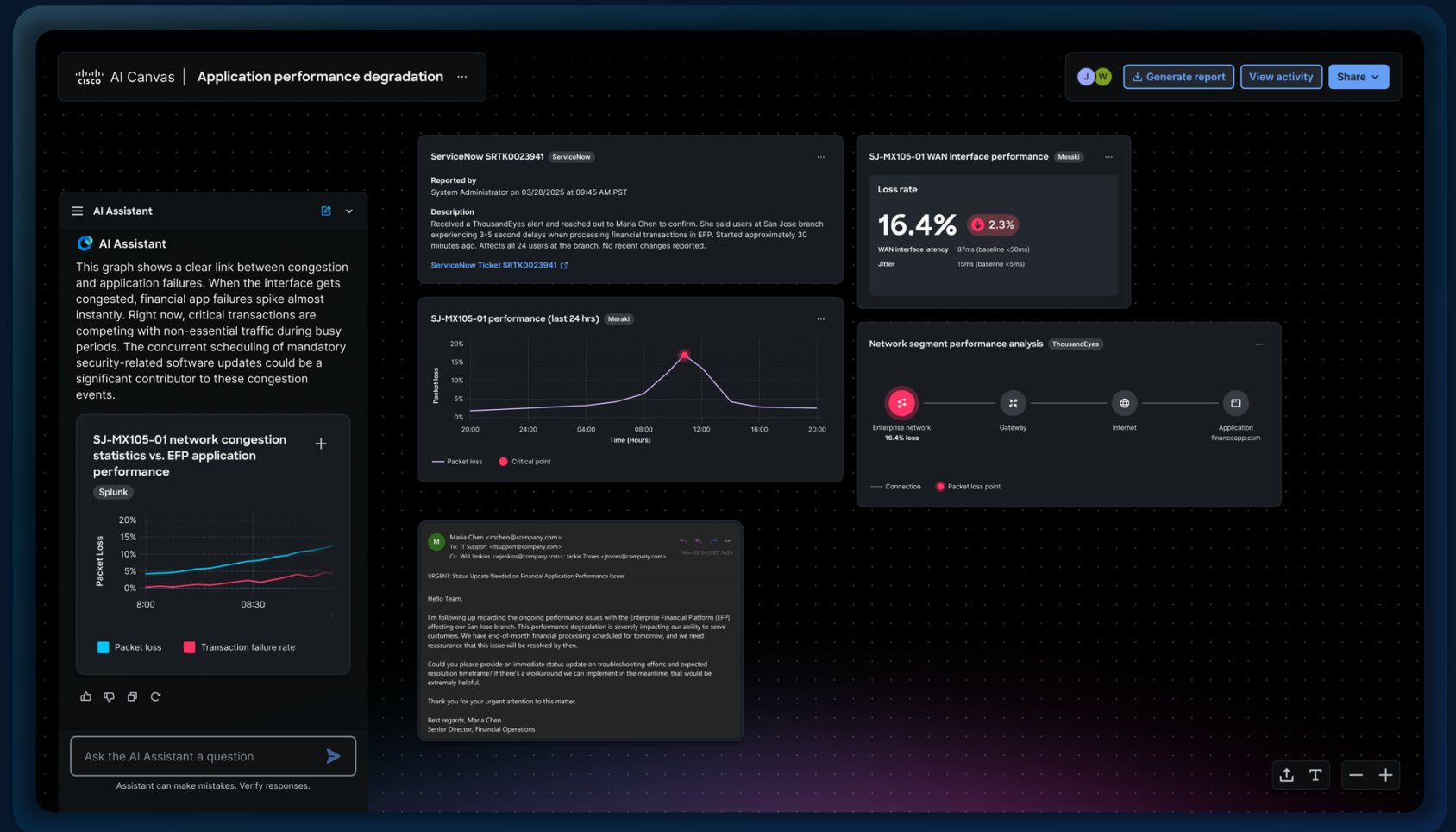
Alpha Feb 2026

AI Canvas

Troubleshooting and execution across multiple domains

Collaboration across multiple users (NetOps, SecOps and execs)

Built on the foundation of the Deep Network Model



Demo

Continuous Optimization

Keeps the network in its best state. Automatically.

Beta CYQ2 26

- Builds and maintains a live operational model of user experience
- Executes expert tuning actions across RF, QoS, path control planes, and more
- Continuously tailors towards Experience Metrics

AP Offline Detected & Auto-Recovered

I detected **Conference Room 3A (MR46)** went unreachable in network **L_28304** and automatically restored connectivity.

Impact Detected:

- AP offline for 2m 34s
- 12 clients disconnected
- Active video call disrupted

Workflow Executed:

ap_recovery

1. Verified AP status via dashboard
2. Checked uplink switch port
3. Initiated PoE power cycle
4. Monitored AP reconnection
5. Verified client reassociation

Actions Taken:

- PoE cycle on switch port Gi1/0/14
- AP rebooted successfully
- Clients auto-rejoined

Result:

- AP back online in 47s
- All 12 clients reconnected
- No manual intervention needed

Meraki AI Assistant • Detected 2:47 PM • Resolved 2:48 PM • No human intervention required



Bandwidth Abuse Detected & Mitigated

I detected a single client consuming 78% of available bandwidth on **Guest-WiFi** and automatically applied traffic shaping to restore fair access.

Impact Detected:

- Client **DC:A6:32:xx:xx:91** using 847 Mbps
- 34 other guests experiencing <2 Mbps
- 8 complaints in last 15 min

Workflow Executed:

bandwidth_policy

1. Identified top bandwidth consumer
2. Analyzed traffic pattern (torrent)
3. Applied per-client limit policy
4. Verified bandwidth redistribution
5. Logged incident for review

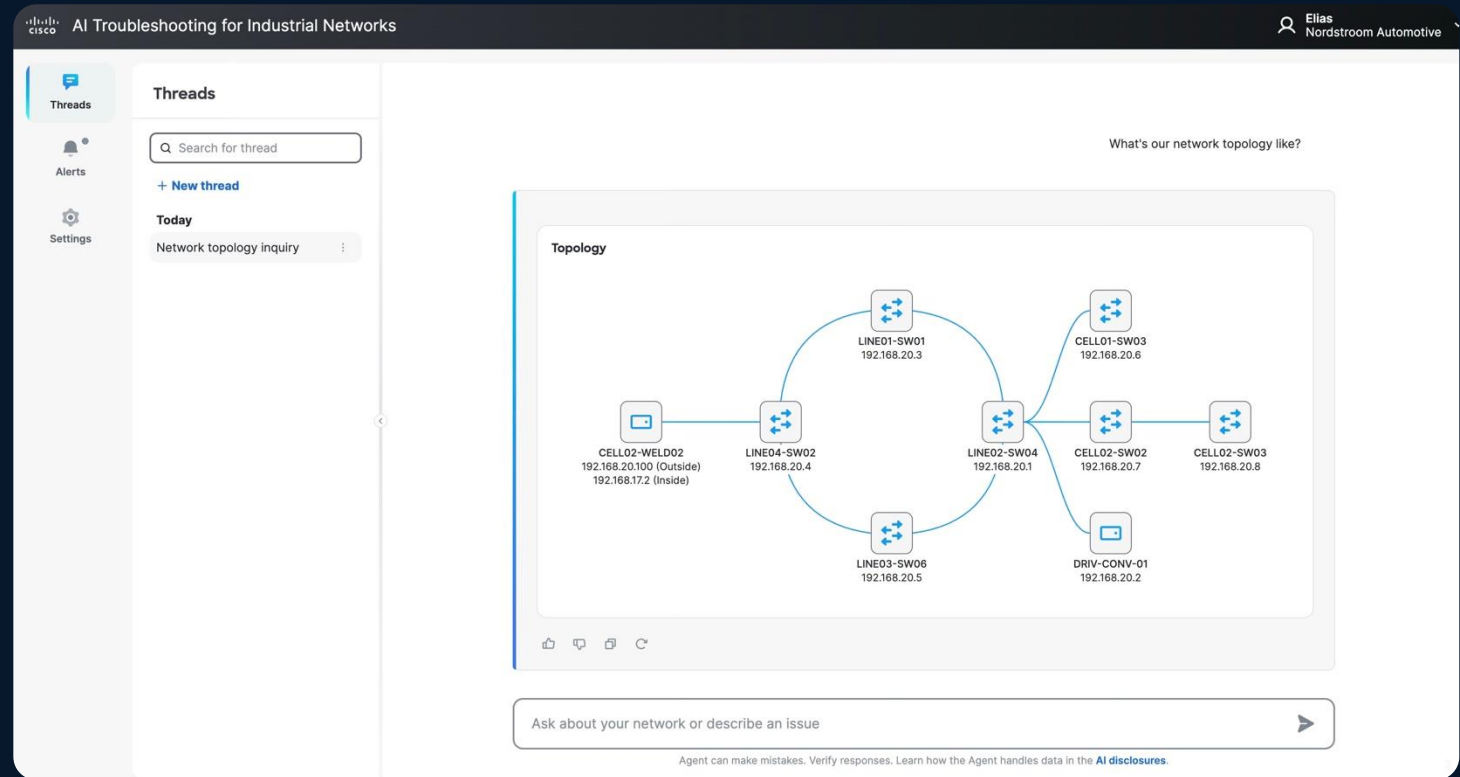
Continuous real-time experience assessment

- Shift from observing systems to understanding experiences
- Collapses thousands of signals into a single view
- Answers questions like “Did clients connect?”
“Do I have enough capacity?”



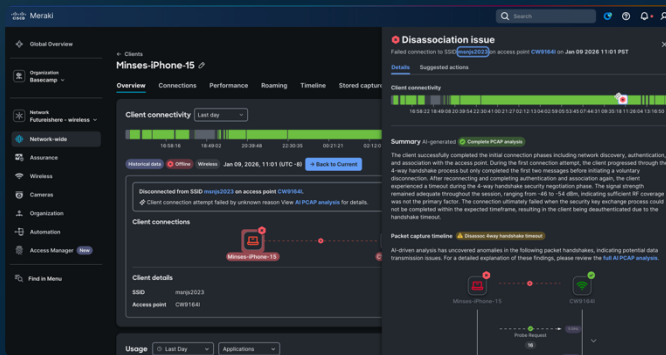
Accelerated troubleshooting for air-gapped industrial environments

- Faster troubleshooting and continuous optimization for air-gapped environments
- Diagnose operational issues and prevent critical downtime
- Continually scan for misconfigurations across complex networks



Wireless capabilities to drive AgenticOps

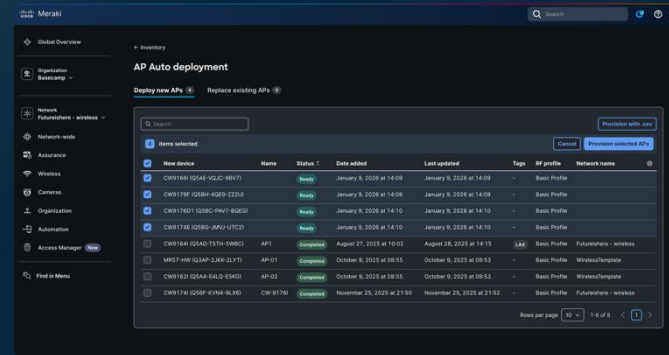
Correlate thousands of signals in real-time.



AI Packet Analyzer

GA May 2026

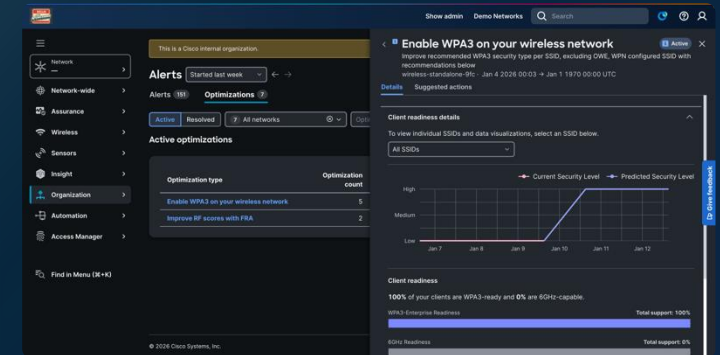
Automate staging for instant rollouts



AP Zero Touch Deployment

GA Jan 2026

Proactive tuning. Predicted performance.

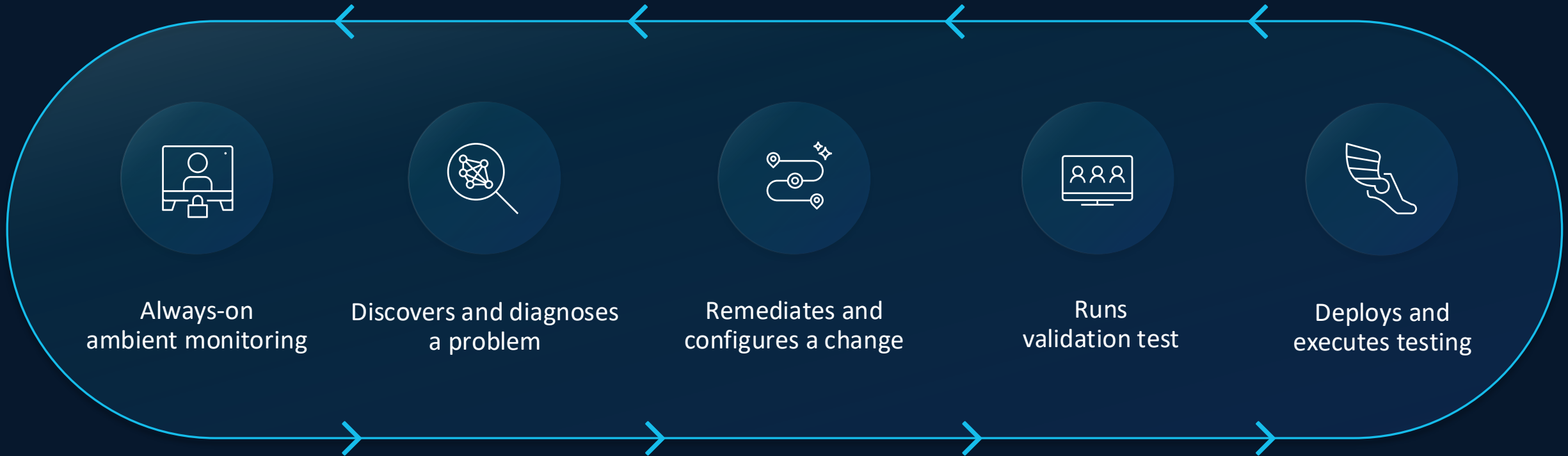


AI Configuration Recommendations

In Beta

AgenticOps in practice

Example



Closed—loop automation

A platform strategy that meets customers where they are



Cloud



On-prem



Hybrid

ONE HARDWARE | ONE LICENSE | ONE SUPPORT

Unified Management – Catalyst and Meraki, any environment

Seamless control across cloud, on-prem, or hybrid

New enterprise campus capabilities

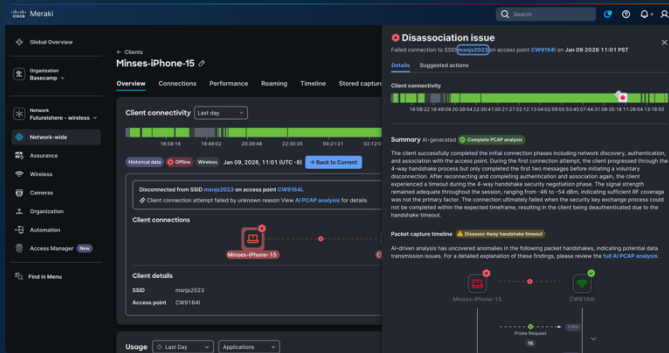
AI-powered automation and assurance

The screenshot displays the Cisco Meraki Management Console interface. The left sidebar contains navigation options: Network (Meraki SF012), Network-wide, Assurance, Security & SD-WAN, Switching, Wireless, Cameras, Sensors, and Organization. The main content area is titled "Organization Summary" and includes a "Device status" section with metrics for Uplinks, WAN appliances, Cellular gateways, Switches, Access points, Controllers, Cameras, and Sensors. Below this is the "Organization insights" section, which features a donut chart for "Impacted networks" (9/100) and a table for "Impact across networks" showing issue types like Clients, Network devices, Infrastructure, and Applications. A "Trending networks" table lists networks such as London, SFO-Corp, Chicago - Data, San Francisco, and Tokyo with their health scores and changes. The bottom section, "Networks by health score", provides a search filter and a table of network health scores, score changes, and tags.

Network	Health score	Score change	Network tags	Clients	Network devices	Infrastructure	Applications
Network name	70 pts	-24pts	Office	48 pts	84 pts	100 pts	100 pts
Network name	82 pts	-12 pts	Office	54 pts	84 pts	99 pts	100 pts
Network name	84 pts	+1 pts	Office	68 pts	84 pts	99 pts	100 pts
Network name	86 pts	-20 pts	Office Tag +3	80 pts	76 pts	100 pts	100 pts

Wireless capabilities to drive AgenticOps

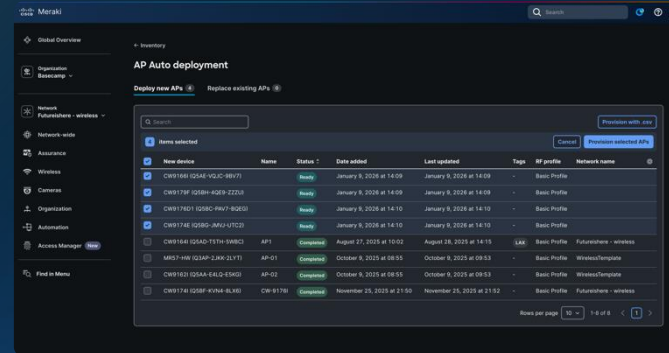
Correlate thousands of signals in real-time.



AI Packet Analyzer

GA May 2026

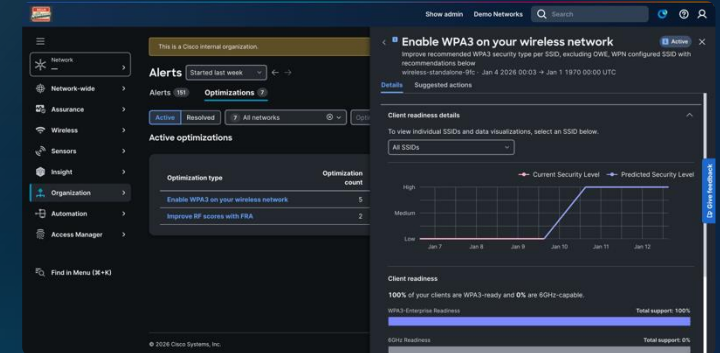
Automate staging for instant rollouts



AP Zero Touch Deployment

GA Jan 2026

Proactive tuning. Predicted performance.

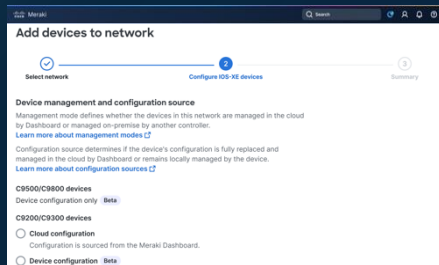


AI Configuration Recommendations

In Beta

Large campus cloud capabilities

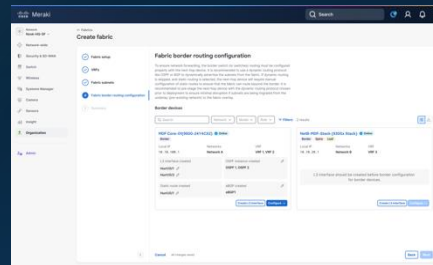
Powerful Switching Capabilities



Support campus deployments with BGP, VRF, ISSU, and IOS XE stacking

IOSXE 17.18.2

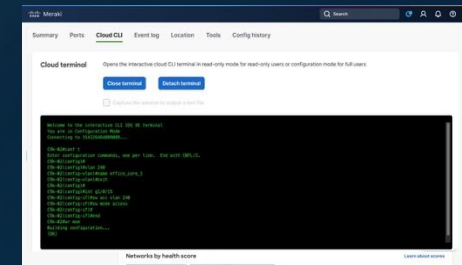
Fabric for Secure Networking



Simplify NetOps with a secure fabric and micro/macro-segmentation

Early Access Dec

Cloud CLI for Flexibility



Simplify onboarding and flexibility with operating mode options and Cloud CLI

C92/3/5XX and C9610

Expanded cloud management for Catalyst portfolio



Wireless

Full wireless support
Scale large campus wireless with
Campus Gateway

GA | MAY



Switching

Expanded management for access and
core switching, including C9200 and
C9500

GA | JULY



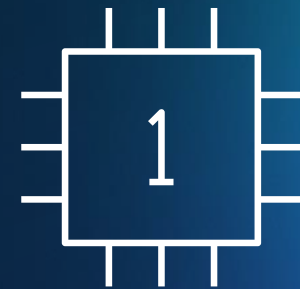
Routing

Next-gen routing
support coming

ALPHA | JUNE

Cloud management powered by cloud-native IOS XE

Scalable devices ready for AI



What does it mean to build hardware for the AI era?

Silicon

Massive packet bandwidth, high forwarding performance, large forwarding info base, P4 programmable for future protocols

OS

Pervasive programmability, deep observability, highly scalable, near-zero downtime architecture

System

Integrated application hosting, AI driven visibility, Programmable open ecosystem, power efficient

Smart Switches



NEW

Secure Routers



NEW

Campus Gateway



NEW

Wi-Fi 7 Expansion



NEW

Scale OT for AI



NEW

Introducing

A new lineup for the new network—change to:
**AI-Ready Secure
Networking Hardware
lineup**

Wi-Fi 7 for every operational scale



CW9172H

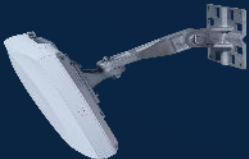
6 Spatial Streams
Dorm Rooms, Hospitality



CW9174E

8/10 Spatial Streams
External antennas

NEW!



CW9176D1

12 Spatial Streams
Integrated Directional

UWB



CW9179F

16 Spatial Streams
LPV/Stadium



CW9171I

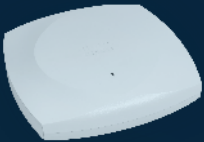
4 Spatial Streams
Omnidirectional

NEW!



CW9172I

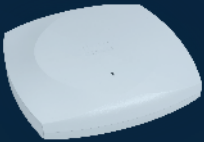
6 Spatial Streams
Omnidirectional



CW9174I

8/10 Spatial Streams
Omnidirectional

NEW!



CW9176I

12 Spatial Streams
Omnidirectional

UWB



CW9178I

16 Spatial Streams
Omnidirectional

UWB

Wi-Fi 7 | Global Use AP | Unified License | AI Optimized

CW9172I/H and 9174I/E



CW9172I

6 Spatial Streams

**2x2:2 across 3 radios, 3 bands
(2.4GHz, 5GHz, 6GHz)**

-or-

2x2:2 on 2.4GHz and 4x4:4 on 5GHz

BLE/IoT and dedicated scan radio

Single 2.5Gbps multigigabit uplink

USB 2.0 – 4.5W

DC Power Jack

Integrated Omnidirectional Antenna

Global Use AP



CW9172H

6 Spatial Streams

**2x2:2 across 3 radios, 3 bands
(2.4GHz, 5GHz, 6GHz)**

BLE/IoT and dedicated scan radio

Single 2.5Gbps multigigabit uplink

3x 1Gbps LAN port with 1x POE out

1x Passthrough port

Integrated Omnidirectional Antenna

Global Use AP



CW9174I/E

8 or 10 Spatial Streams

**2x2:2 on 2.4GHz and
4x4:4 on 5GHz and 6GHz**

-or-

4x4:4 on 2.4GHz and 5GHz

BLE/IoT and dedicated scan radio

Single 5Gbps multigigabit uplink

USB 2.0 – 9W, DC Power Jack

Integrated Omnidirectional Antenna

9174E only:
Extended operating temp range, -20C to 50C

DART-8 External Antenna

Global Use AP

Same brackets as always for CW9172I/ 9174I/e (AIR-AP-BRACKET-1/ AIR-AP-BRACKET-2)

9172H compatible with Meraki MR36H bracket (MA-MNT-MR-H1A) or Catalyst C9105AXW bracket (AIR-AP-BRACKET-W4)

CW9174E is NOT an Outdoor AP

!! CW9174E is NOT an outdoor AP !!

(but can be used outdoors in an enclosure in the US)

- 6GHz Standard Power != Outdoor
- Outdoor = 6GHz Standard Power

	CW9174I	CW9174E
No External Antenna Connectors	✓	✗
No Weatherization	✓	✓
Outdoor OK	✗	✓

FCC does not have specific regulations for using 6GHz outdoors. The implied restriction is that low power indoor (LPI) AP cannot be weatherized.

CW9174I supports LPI, it cannot be used in a weatherized enclosure.

Only **CW9174E** can be used in a weatherized enclosure

Campus Gateway



Enterprise-class cloud functionality

Support critical campus wireless services with cloud management and real-time control plane



Deploy without redesign

Deploy Campus Gateway with little to no redesign of the on-premises wireless network architecture



Seamless roaming at scale

Scale for up to 50,000 client devices and 5,000 access points with a single Campus Gateway

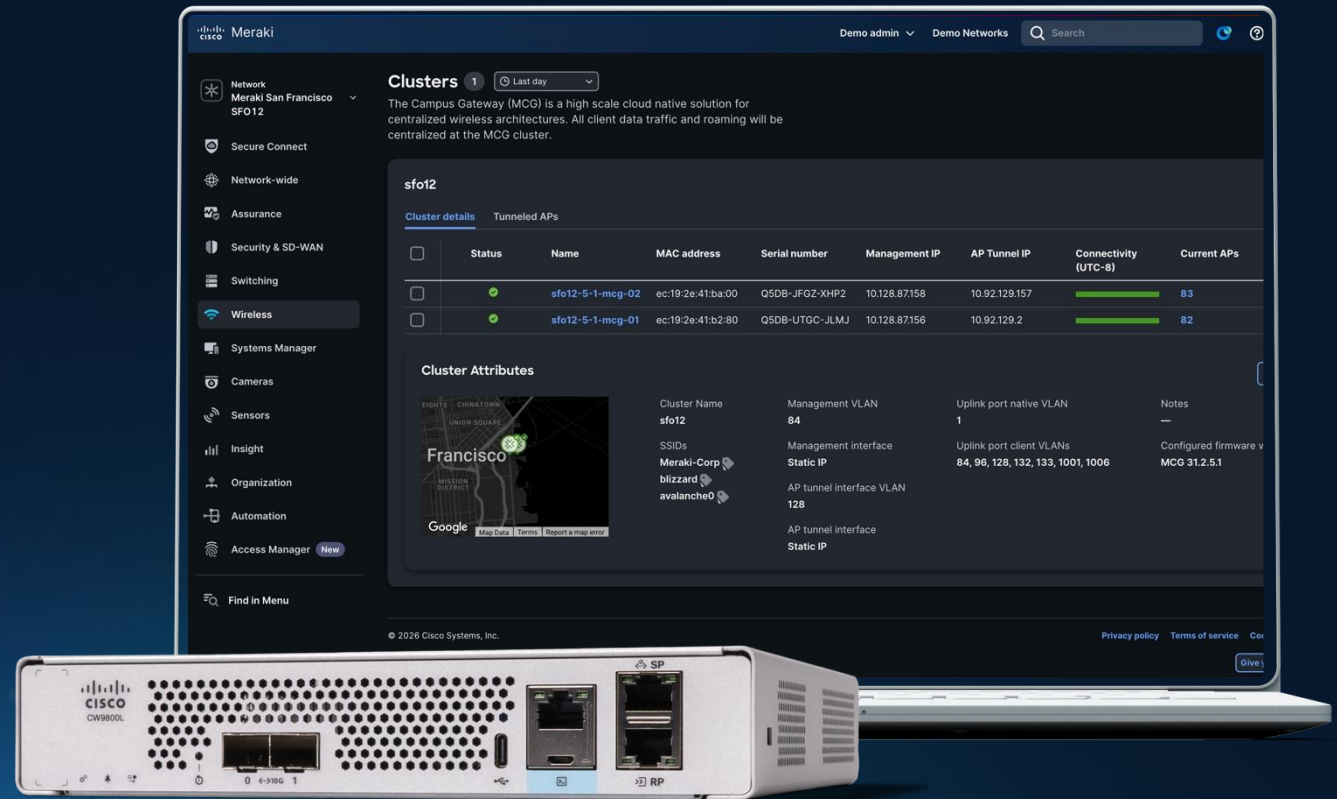


New Campus Gateway

Expanding cloud flexibility for every campus size

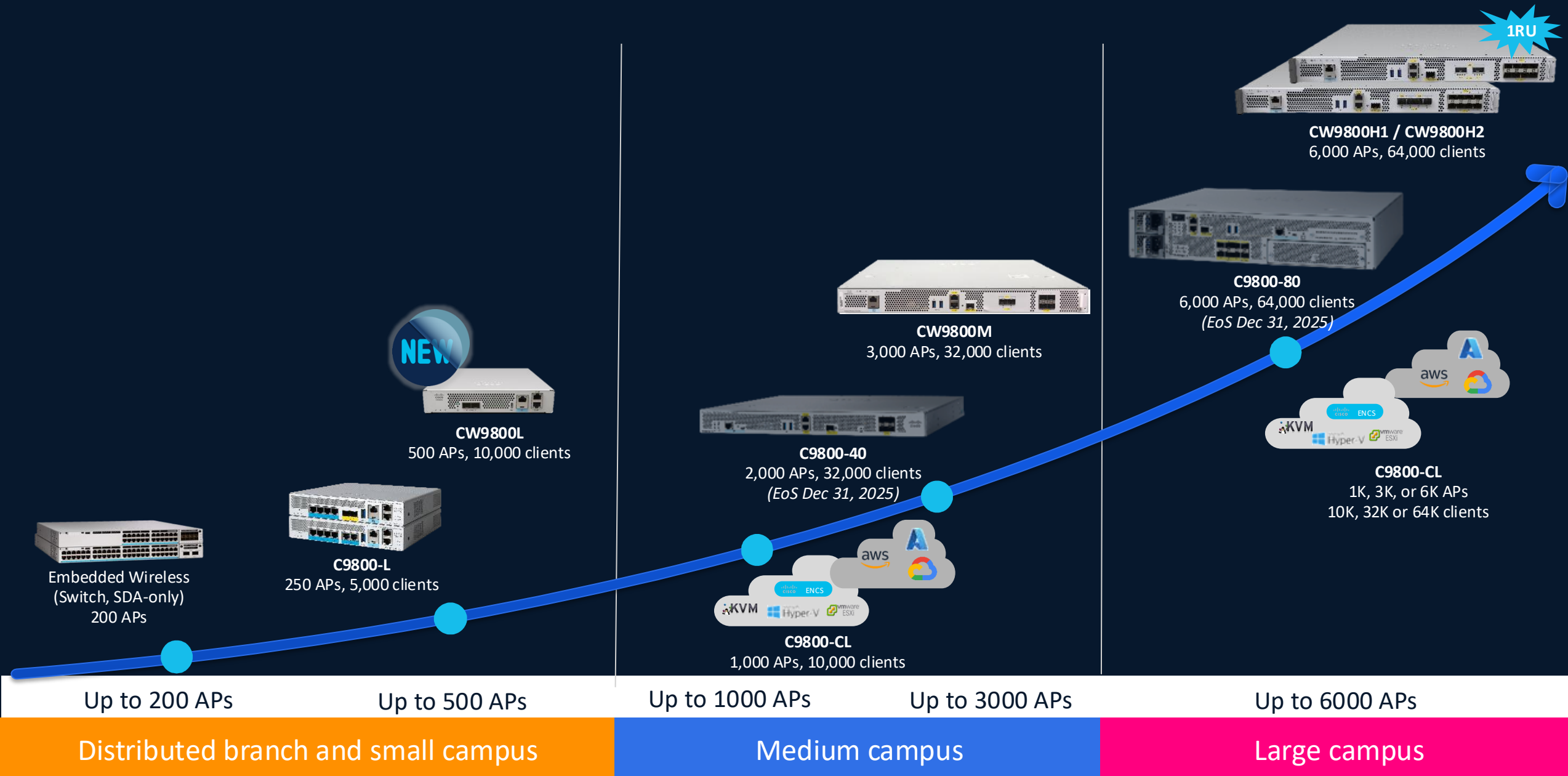
Orderable Mar 2026

- More choices for every campus size, with now options for medium and growing sites
- Seamless roaming for up to 10,000 clients and 500 APs across buildings
- Easy cloud management without redesigning your existing LAN



CW9800L-MCG

Cisco Wireless Controller Portfolio



Single access point to
connect end users and
industrial AI

Highly resilient,
always-on connectivity

Ultra-low latency
and high reliability

Introducing

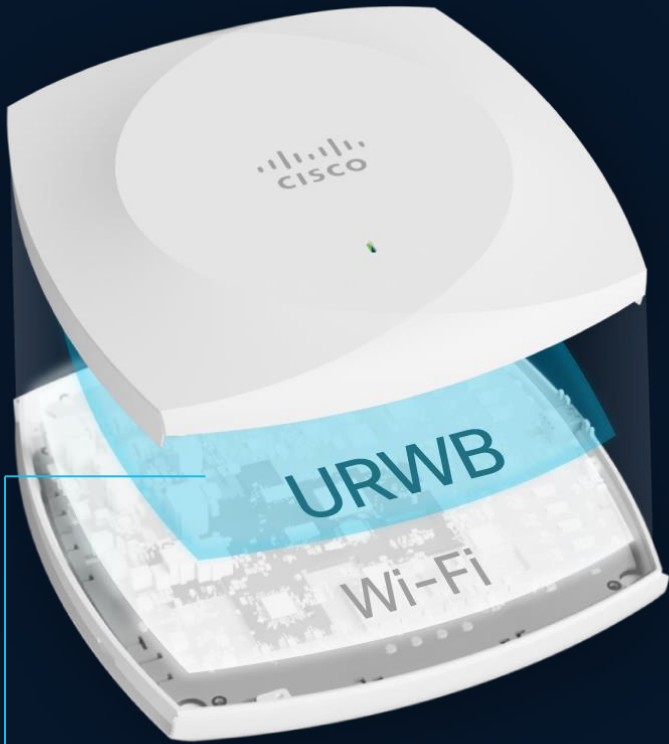
Wi-Fi + Ultra-Reliable Wireless Backhaul



AVAILABLE JUNE 2025

Cisco IW9165 | Cisco IW9167

Unified Wi-Fi and URWB infrastructure



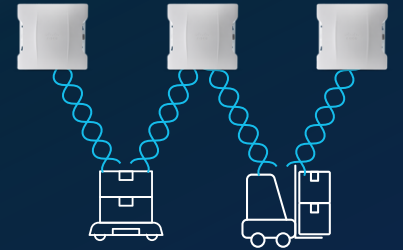
Ultra-Reliable Wireless Backhaul
built-in Enterprise Wi-Fi Access
Points

Before

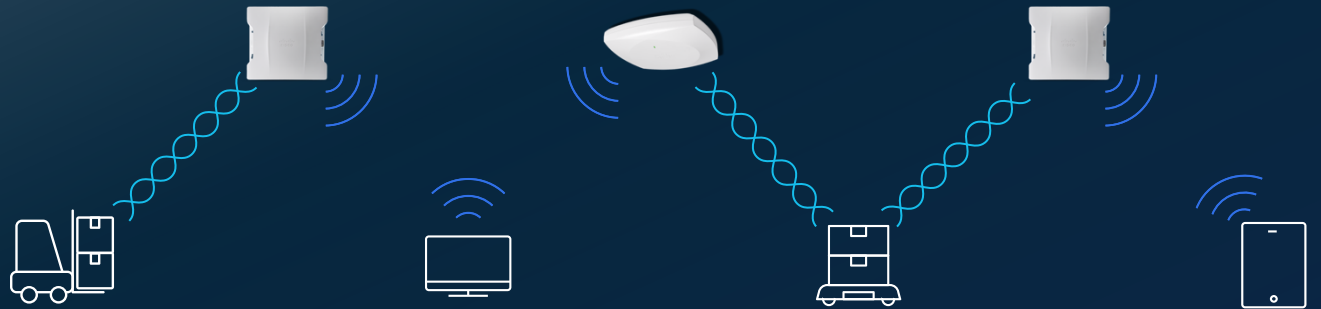
Wi-Fi
Access
Network



Industrial
Wireless
Network



Now



Unified Wireless Infrastructure

One Management Platform, One wireless infrastructure to install

Best of Wi-Fi combined with use new cases enabled by CURWB Technology

19 versatile
form factors

Up to 54 Gbps
throughput

720W per
switch

Cyber Vision
embedded security

Introducing

All New Industrial Ethernet Portfolio








Cisco IE3100/H | Cisco IE3500/H | Cisco IE9300

AVAILABLE JUNE 2025

Announcing 19 new switches joining Cisco's leading portfolio

DIN-rail Portfolio

NEW!  8x + **NEW!**  2x

 2x  4x  2x **NEW!**  6x

Cisco IE3100 - Compact 4PPoE Cisco IE3200 Cisco IE3300 Cisco IE3400 Cisco IE3500

IP67 Portfolio

NEW!  2x

 6x **NEW!**  8x

Cisco IE3100H - Compact Cisco IE3400H Cisco IE3500H

Rackmount Portfolio

 4x  3x **NEW!** 

Cisco IE9300 – All Copper Cisco IE9300 – All Fiber Cisco IE9300 – Mixed Ports

Rugged networking, cloud-simple

Beta Feb 26

- First industrial switch IE3500 with unified cloud management
- Remove complexity of managing diverse or remote networks with a single dashboard
- Enable enterprise security and compliance for rugged environment deployments

The screenshot shows the Meraki cloud management interface for a switch named 'IE3500-POE-cloud'. The interface is dark-themed and includes a search bar at the top right. The main content area is divided into several sections:

- Global Overview:** Shows the switch is 'Online' and configuration source is 'Cloud'. The switch ID is 'IE-3500-8U3X b4: ca: dd'.
- Summary:** Displays a map of the switch's location (7025-6 Kit Creek Rd, Morrisville, NC 27560) and key details: Serial number (FVH: Q4N), Device uptime (55d 1h 38m), Last device boot (Nov 19 14:36:42 (CST)), and Configuration (Up to date).
- Ports:** A grid of 11 ports (1/1 to 1/11) is shown. Port 1/5 is highlighted with a tooltip showing: 'Port 1/5 : GigabitEthernet1/5', 'ACCESS', 'VLAN 222', 'Port status: Connected (Full speed)', and 'Link negotiation: Auto negotiate (1 Gbps)'. Other ports are shown with status icons (green for connected, grey for disconnected).
- Historical device data:** A 'Connectivity' chart shows a green bar indicating the switch has been online from Dec 15 to Jan 2.

Thank you!