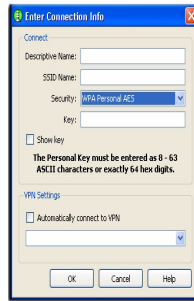


## Adding an SSID

To access the **Enter Connection Info** window, click **Add SSID** from the main window.

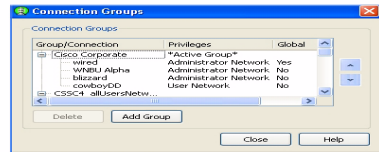
- **Connect:**
  - Descriptive Name—If left blank, the SSID is displayed.
  - SSID Name—Display only.
  - Security—Choose from the drop-down list.
  - Key—Enter your predefined, shared key value -OR- 802.1X Configuration—Select the authentication type and specify the credentials (password, certificate, token).
- **VPN Settings:**
  - Select the check box for automatic VPN connection. Select the VPN connection link from the drop-down menu.
  - VPN Credentials—Displays when required by the client. Enter your user name and PIN and click **OK**. If you are using SoftToken II credentials, the VPN Credentials window requires a PIN, which corresponds to your SoftToken II PIN.



## Configuring Groups

Access the Connection Group window from the main window Groups drop-down menu or from the tray icon (**Groups > Configure Groups**).

- **Groups/Connection**—Displays the tree structure of your groups and connections.
- **Privileges**—Indicates the active group and each network type (administrator or user).
- **Global**—
  - Administrator Network:
    - Yes—Connection appears automatically in all groups (administrator or user created).
    - No—Connection appears only in the assigned group.
  - User Network—Fixed at value No. Users may not create global connections.



Americas Headquarters  
Cisco Systems, Inc.  
170 West Tasman Drive  
San Jose, CA 95134-1706  
USA  
<http://www.cisco.com>  
Tel: 408 526-4000  
800 553-NETS (6387)  
Fax: 408 527-0883



Cisco, Cisco Systems, the Cisco logo, and the Cisco Systems logo are registered trademarks or trademarks of Cisco Systems, Inc. and/or its affiliates in the United States and certain other countries. All other trademarks mentioned in this document or Website are the property of their respective owners. The use of the word partner does not imply a partnership relationship between Cisco and any other company. (0705R)

© 2008 Cisco Systems, Inc. All rights reserved.

♻️ Printed in the USA on recycled paper containing 10% postconsumer waste.



## CISCO SECURE SERVICES CLIENT (2k, XP, and Vista)




## Quick Start Guide

The Cisco SSC Quick Start Guide includes the following information:

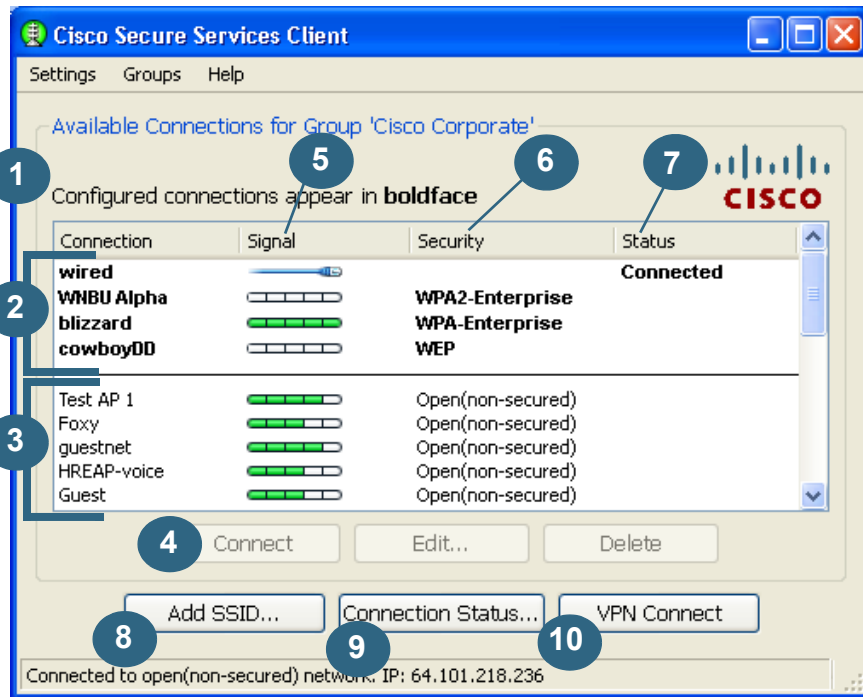
- Accessing the Main Secure Services Client Dialog
- Main Secure Services Client Dialog Overview
- Tray Icon Overview
- Adding an SSID
- Configuring Groups

## Accessing the Main Secure Services Client Dialog


You can access the main dialog in one of two ways:

- Choose **Start > All Programs > Cisco > Cisco Secure Services Client > Cisco Secure Services Client Open**.
- OR-
- Double-click the tray icon. 

# Main Dialog Overview



- 1 Network connections**—Include configured and scan-list connections.
- 2 Configured connections**—They are listed in the following order:
  - **First**—By administrator-created connections in the order in which they were deployed.
  - **Second**—By user-created connection in the order in which they were created.
- 3 Scan-list connections**—Available networks that are potential connections. This list only includes networks that include their SSID in their beacons. Networks that do not contain an SSID in their beacons ('hidden' networks) do not display.
- 4 Connect**—Double-click a listed connection OR click **Connect** after selecting a listed connection.

 **Note** Right-click a configured connection and select **Connect Exclusively** to ensure that this is the only connection that Cisco SSC attempts to access.

- 5 Signal**—When the connection is wireless, the column displays a bar with the relative strength of the received radio signal. If the wireless connection is not detected, then an empty bar displays. If the connection is wired, a static placeholder icon displays.
- 6 Security**—Identifies security levels.
  - **Open**—No authentication or encryption.
  - **WEP**—Legacy open association with static WEP encryption or shared association with WEP-shared keys.
  - **WPA/WPA2-Personal**—(Wi-Fi standard) Uses a pass-phrase pre-shared key.
  - **WPA/WPA2-Enterprise**—(Wi-Fi standard) Uses an authentication server.
- 7 Status**—Displays the current connection status.
  - **Searching for adapter**—No adapter is available or the adapter is disabled.
  - **Associating**—Performing the 802.11 association protocol.
  - **Authenticating**—Performing the 802.1X authentication protocol.
  - **Acquiring IP address**—Obtaining your IP assignment.
  - **Connected**—End state.
  - **WPA/WPA2-Enterprise**—(Wi-Fi standard) Uses an authentication server.
- 8 Add SSID**—Click to add and configure a new connection.
- 9 Connection Status**—Click to view the current connection status.
- 10 VPN Connect**—Click to activate a VPN connection.

## Tray Icon

Right-click the tray icon in the system tray for direct access to SSC functionality.

- **Connect Automatically**—If checked, SSC chooses the best available configured connection. If unchecked, SSC only connects to the checked configured connection in the list.
- **Connections**—Displays the list of configured and scan-list connections and indicates to which you are currently connected.
- **VPN Connect**—Click to access the VPN Settings window.
- **Groups**—Provides a list of current connection groups and access to the Connection Groups window.
- **Enable Wi-fi Radio**—Click to toggle the radio on and off.
- **Repair**—Click to restart and repair SSC.
- **About**—Click to view product name and version information.

