



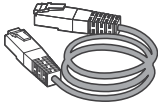
Cisco DX70

INSTALLATION GUIDE

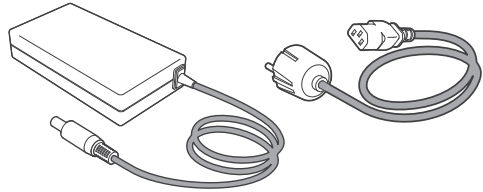


Accessories

A Ethernet cable (2.9m/9.5ft)

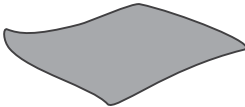


B Power adapter and regional power cable



Always use the provided Lite-On PA-1600-2A-LF power supply (input: 2 A, 100-240 V, 50-60 Hz; output: 5.0 A, 12.0 V) or FSP075-DMAA1 (input: 1.2 A, 100-240 V, 50-60 Hz; output: 6.5 A, 12.0 V)

C Cleaning cloth



Optional Accessories

- VESA adapter

User Guides



For user guides and compliance and safety information for this product, go to:
<http://www.cisco.com/go/dx-docs>

Room Setup

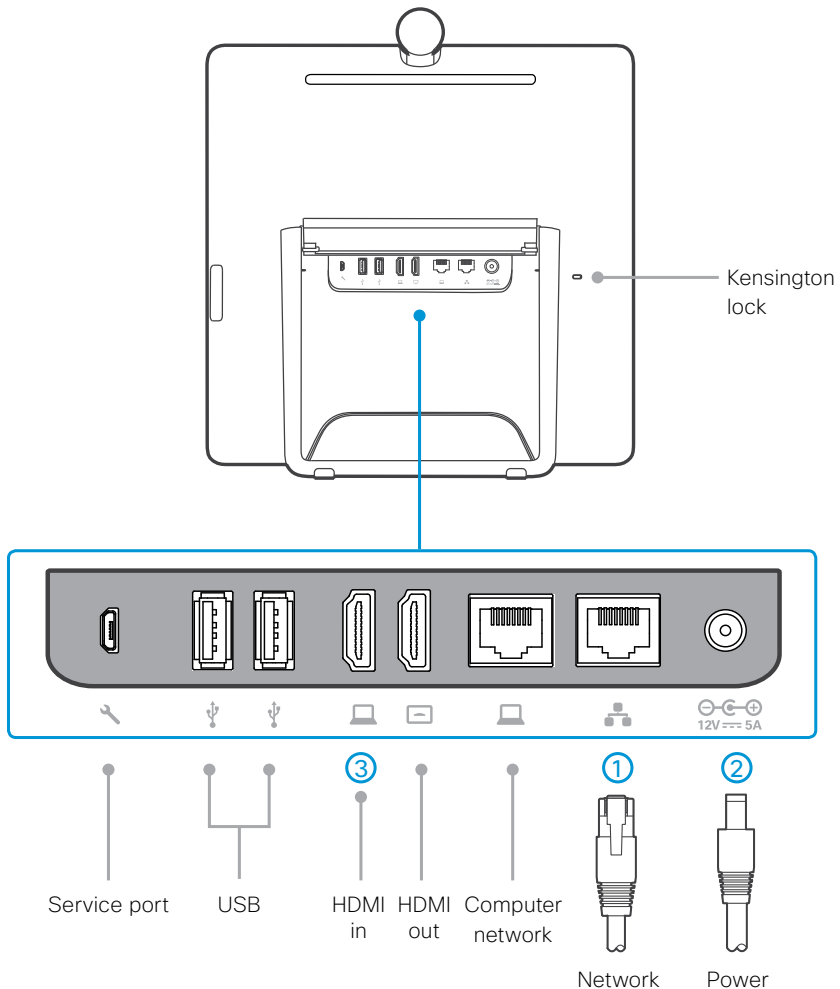


For more information on how to set up your room for the best video experience, visit the Project Workplace tool at <http://www.cisco.com/go/projectworkplace>

Connect Cables

1. Pull the foot stand, set the DX70 in an upright position and adjust the angle.
2. Flip the connector cover up to access the connector panel.
3. Connect the Ethernet cable (A) between the network connector ① and a network wall socket. Alternatively, you can use a Wi-Fi connection.
4. Connect the provided power adapter and cable (B) between the DX70 ② and a power socket.

To use the same network wall socket for both your computer and DX70, connect your computer to the computer network port on the DX70, and the DX70 to the network wall socket (see step 3).



Start the System

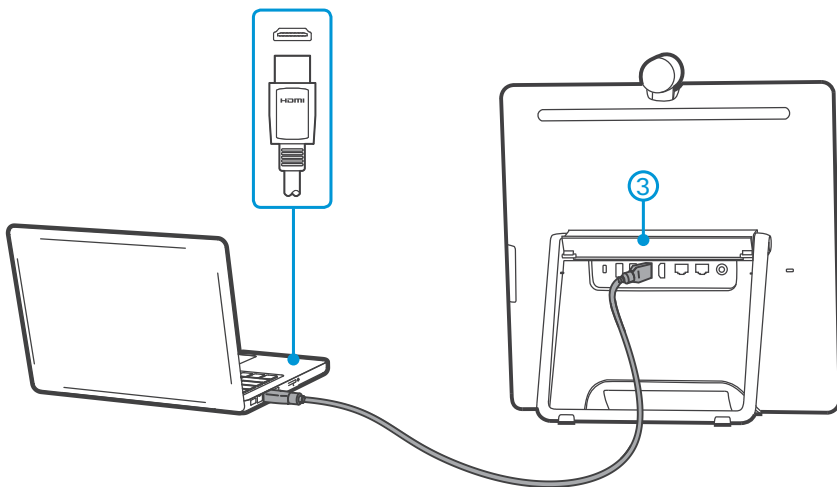
1. Push the power button to start up the DX70. The power button's LED lights up when the device starts up.
2. Follow the on-screen instructions to set up the system.

For more information on how to set up the system, see the Administrator Guide at <http://www.cisco.com/go/dx-docs>

Connect to Computer and Monitor

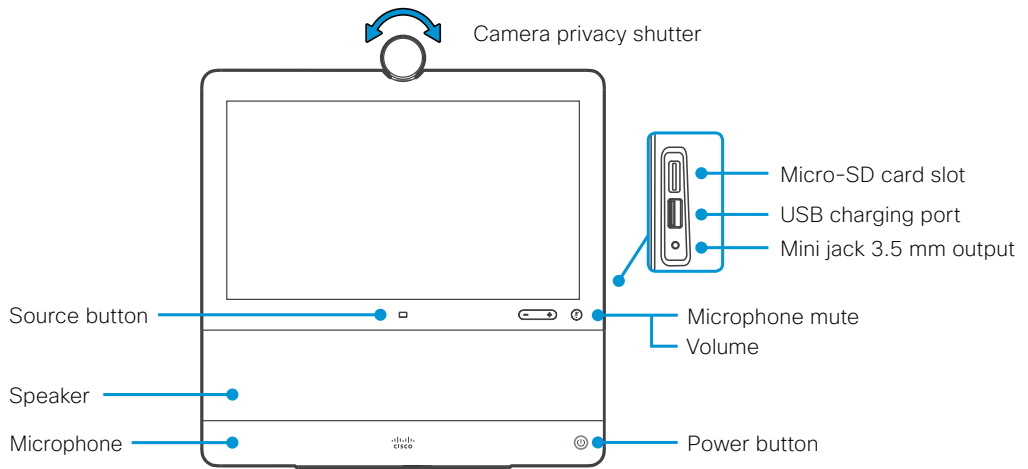
Connect your computer to the DX70 to enable content sharing and to use it as a monitor for your computer.

Connect an HDMI cable between the DX70 **③** and your computer. You may need an adapter for the HDMI cable, depending on the connectors available on your computer.



The DX70 can be connected to an external monitor via the HDMI out port.

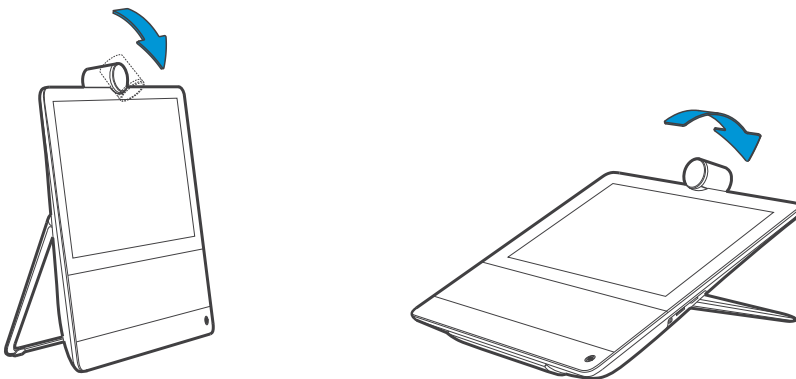
Front and Side Panels



Turn the privacy shutter to open and close the camera.

Use the source button to show and hide your computer screen when a computer is connected to the DX70.

Adjust Camera and Stand



You can tilt the camera to adjust the camera angle and to activate the document camera feature.

Adjust the foot stand to take advantage of the extended tilt of the touch screen.



On our web site you will find an overview of the
worldwide Cisco contacts.

Go to: <http://www.cisco.com/web/siteassets/contacts>

Corporate Headquarters
Cisco Systems, Inc.
170 West Tasman Dr.
San Jose, CA 95134 USA

Cisco and the Cisco logo are trademarks or registered trademarks of Cisco and/or its affiliates in the U.S. and other countries. To view a list of Cisco trademarks, go to this URL: www.cisco.com/go/trademarks. Third-party trademarks mentioned are the property of their respective owners. The use of the word partner does not imply a partnership relationship between Cisco and any other company. (1110R)