



Cisco Interaction Manager Tools Console User's Guide

Release 4.1(1)
January 2007

Corporate Headquarters

Cisco Systems, Inc.
170 West Tasman Drive
San Jose, CA 95134-1706
USA
<http://www.cisco.com>
Tel: 408 526-4000
800 553-NETS (6387)
Fax: 408 526-4100



THE SPECIFICATIONS AND INFORMATION REGARDING THE PRODUCTS IN THIS MANUAL ARE SUBJECT TO CHANGE WITHOUT NOTICE. ALL STATEMENTS, INFORMATION, AND RECOMMENDATIONS IN THIS MANUAL ARE BELIEVED TO BE ACCURATE BUT ARE PRESENTED WITHOUT WARRANTY OF ANY KIND, EXPRESS OR IMPLIED. USERS MUST TAKE FULL RESPONSIBILITY FOR THEIR APPLICATION OF ANY PRODUCTS.

THE SOFTWARE LICENSE AND LIMITED WARRANTY FOR THE ACCOMPANYING PRODUCT ARE SET FORTH IN THE INFORMATION PACKET THAT SHIPPED WITH THE PRODUCT AND ARE INCORPORATED HEREIN BY THIS REFERENCE. IF YOU ARE UNABLE TO LOCATE THE SOFTWARE LICENSE OR LIMITED WARRANTY, CONTACT YOUR CISCO REPRESENTATIVE FOR A COPY.

The Cisco implementation of TCP header compression is an adaptation of a program developed by the University of California, Berkeley (UCB) as part of UCB's public domain version of the UNIX operating system. All rights reserved. Copyright © 1981, Regents of the University of California.

NOTWITHSTANDING ANY OTHER WARRANTY HEREIN, ALL DOCUMENT FILES AND SOFTWARE OF THESE SUPPLIERS ARE PROVIDED "AS IS" WITH ALL FAULTS. CISCO AND THE ABOVE-NAMED SUPPLIERS DISCLAIM ALL WARRANTIES, EXPRESSED OR IMPLIED, INCLUDING, WITHOUT LIMITATION, THOSE OF MERCHANTABILITY, FITNESS FOR A PARTICULAR PURPOSE AND NONINFRINGEMENT OR ARISING FROM A COURSE OF DEALING, USAGE, OR TRADE PRACTICE.

IN NO EVENT SHALL CISCO OR ITS SUPPLIERS BE LIABLE FOR ANY INDIRECT, SPECIAL, CONSEQUENTIAL, OR INCIDENTAL DAMAGES, INCLUDING, WITHOUT LIMITATION, LOST PROFITS OR LOSS OR DAMAGE TO DATA ARISING OUT OF THE USE OR INABILITY TO USE THIS MANUAL, EVEN IF CISCO OR ITS SUPPLIERS HAVE BEEN ADVISED OF THE POSSIBILITY OF SUCH DAMAGES.

CCSP, CCVP, the Cisco Square Bridge logo, Follow Me Browsing, and StackWise are trademarks of Cisco Systems, Inc.; Changing the Way We Work, Live, Play, and Learn, and iQuick Study are service marks of Cisco Systems, Inc.; and Access Registrar, Aironet, ASIST, BPX, Catalyst, CCDA, CCDP, CCIE, CCIP, CCNA, CCNP, Cisco, the Cisco Certified Internetwork Expert logo, Cisco IOS, Cisco Press, Cisco Systems, Cisco Systems Capital, the Cisco Systems logo, Cisco Unity, Empowering the Internet Generation, Enterprise/Solver, EtherChannel, EtherFast, EtherSwitch, Fast Step, FormShare, GigaDrive, GigaStack, HomeLink, Internet Quotient, IOS, IP/TV, iQ Expertise, the iQ logo, iQ Net Readiness Scorecard, LightStream, Linksys, MeetingPlace, MGX, the Networkers logo, Networking Academy, Network Registrar, Packet, PIX, Post-Routing, Pre-Routing, ProConnect, RateMUX, ScriptShare, SlideCast, SMARTnet, StrataView Plus, TeleRouter, The Fastest Way to Increase Your Internet Quotient, and TransPath are registered trademarks of Cisco Systems, Inc. and/or its affiliates in the United States and certain other countries.

All other trademarks mentioned in this document or Website are the property of their respective owners. The use of the word partner does not imply a partnership relationship between Cisco and any other company. (0502R)

Any Internet Protocol (IP) addresses used in this document are not intended to be actual addresses. Any examples, command display output, and figures included in the document are shown for illustrative purposes only. Any use of actual IP addresses in illustrative content is unintentional and coincidental.

Cisco Interaction Manager Tools Console User's Guide
© 2007 Cisco Systems, Inc. All rights reserved.

Contents

Preface	6
About this guide	7
Document conventions	7
Other learning resources	8
Online help	8
Document set.	8
Chapter 1: Console basics	9
Key terms and concepts	10
System settings	10
Screen settings.	10
Elements of the user interface.	10
Chapter 2: Custom attributes	12
About business objects	13
Creating custom attributes	14
Adding custom attributes to screens.	15
Creating macros for custom attributes	16
Chapter 3: Custom values	17
Creating custom values.	18
Creating custom product types	19
Creating custom activity types	20
Associating classifications to activity types	21
Chapter 4: Customer associations	23
Configuring customer associations.	24
Deleting customer associations.	25

Chapter 5: Screen attribute settings.....26

- About customizing screens 27
- Configuring information pane section toolbar 27
 - Changing the order of buttons. 28
 - Removing buttons 29
 - Adding custom buttons 30
 - Creating custom buttons. 30
 - Adding custom buttons to the information pane section toolbar 31
 - Deleting custom buttons 32
 - Changing the shortcut key for the buttons 32
- Configuring screen attributes for departments 33
- Configuring screen attributes for users 34

Chapter 6: New activity shortcuts35

- Preparing for creating new activity shortcuts 36
- Creating new activity shortcut 36
- Deleting new activity shortcuts. 39

Appendix: Reference information.....40

- Custom attributes 41
- Customizable screens 42
 - Activity data 42
 - Activity search data 42
 - Generic activity data 42
 - KB article data 43
 - Article search data 43
 - Article summary for version and pending 43
 - Case data 43
 - Case search data 44
 - Contact person data 44
 - Contact person search data 44
 - Contact point data 44
 - Email address contact point data 44
 - Phone number data 44
 - Postal address data 45
 - Web site data 45

Contact point search data	45
Customer association data	45
Customer association search data	45
Customer data	45
Change customer data	45
Cooperate customer data	46
Group customer data	46
Individual customer data	46
Customer search data	46
Customer group data	46
Customer organization data	46
Routing queue	46
User data	47
User search data	47
Editable screens	47
Custom attributes available in new activity shortcuts	49
Predefined attribute values	49
Activity: Mode	49
Activity: Type	49
Activity: Status	49
Case: Status	50
Chat: Status	50
Contact person: ID type	50
Currency: Type	50
Customer: Contact person type	50
Customer: Country	51
Customer: Group type	58
Customer: Industry	58
Customer: Level	58
Customer: Organization type	58
Customer: Region	58
Customer: Webtype	59
Product: Type	59
User: Type	59
User: Unavailability reason	59

Preface

- ▶ [About this guide](#)
- ▶ [Document conventions](#)
- ▶ [Other learning resources](#)

Welcome to **Cisco® Interaction Manager™**—multichannel interaction software used by businesses all over the world to build and sustain customer relationships. A comprehensive suite of the industry’s best applications for multichannel customer interaction management, Cisco Interaction Manager is the backbone of many innovative contact center and customer service helpdesk organizations.

About this guide

Cisco Interaction Manager Tools Console User’s Guide introduces you to the Tools Console and helps you understand how to use it to configure screens and business objects.

Document conventions

This guide uses the following typographical conventions.


Convention	Indicates
<i>Italic</i>	Emphasis, or the title of a published document.
Bold	The label of an item in the user interface, such as a field, button, or tab.
Monospace	A file name or command. Also, text that must be typed by the user.
<i>Variable</i>	User-specific text, which is supplied by the user.

Other learning resources

Various learning tools are available within the product, as well as on the product CD and our website. You can also request formal end-user or technical training.

Online help

The product includes topic-based as well as context-sensitive help.

Use	To view
 Help button	All topics in <i>Cisco Interaction Manager Help</i> ; the Help button appears in the console toolbar on every screen, as well as on most windows.
F1 keypad button	Context-sensitive information about the item selected on the screen.

Document set

For more information about Cisco Interaction Manager, see the following documents. They can be found in the **Documents** folder on the product CD.

- ▶ *Cisco Interaction Manager System Requirements*
- ▶ *Cisco Interaction Manager Installation Guide*
- ▶ Other Cisco Interaction Manager user's guides

1 Console basics

- ▶ [Key terms and concepts](#)
- ▶ [Elements of the user interface](#)

A highly specialized workspace for business analysts and programmers, this console lets you create extend or restrict business objects and set permissions for their use in the system and various screens and by users.

Key terms and concepts

Here are some of the key terms and concepts used frequently in the Tools Console.

System settings

The business objects in the system consist of numerous attributes. Based on your business needs you can extend or limit the scope of these attributes, by configuring which attributes you want to make available. You can extend the objects in the system by adding custom attributes, and also by adding custom values to the attributes. For example, for the business object, Activity you can add custom attribute, and for the attribute Activity Type you can add custom activity types. All these changes can be made only at the partition level.

Screen settings

The application provides you with the flexibility to customize various screens according to your business needs. For each department you can customize about 125 screens. You can enable, restrict, or reorder the attributes that can be viewed in these screens. You can also customize the Information pane section toolbar of the Agent console by adding, removing or changing the order of the section toolbar buttons. The customization of Information pane section toolbar can be done only at the partition level. The changes made at the partition level, take affect through out the system.

Elements of the user interface

The conoles consists of five functional areas:

1. **Console toolbar:** The main toolbar of the console appears at the top of the screen. It allows you to access some frequent commands with a single click.

2. **Tree pane:** The **Tree** pane presents the knowledge base folders as a tree list, allowing you to select the node (folder) that you wish to work in. When you select a folder, its first-level contents—subfolders and articles—are displayed in the **List** pane. In the **Tree** pane, you can cut paste or copy paste folders, delete folders which you have created, manage bookmarks and print folder contents.

To expand all first and second level nodes with a single click, shift + click the plus [+] button next to the topmost node. The contents of all first and second level nodes are displayed in the **Tree** pane.

3. **List pane:** The **List** pane displays first-level contents of the folder selected in the **Tree** pane. You can view the name, description, date of creation, etc., of the displayed items. Note that you can view only those columns that the administrator has permitted for display. In this pane, you can create items or select existing ones to modify or delete them.
4. **Properties pane:** The **Properties** pane displays the contents of the folder or article selected in the **List** Pane. In this pane, you can edit the properties of the selected item.
5. **Status bar:** The status bar is present at the bottom of every screen. It displays the following information:
 - The user name with which the user has logged in the system.
 - The language currently in use.
 - The status of the system (**Loading, Ready**, etcetera).



Custom attributes

- ▶ [About business objects](#)
- ▶ [Creating custom attributes](#)
- ▶ [Adding custom attributes to screens](#)
- ▶ [Creating macros for custom attributes](#)

About business objects

You can customize the business objects by adding custom attributes.

You can add custom attributes to the following business objects.

1. Activity data
 - Activity search data
 - Generic activity data
2. Case data
 - Case search data
3. Contact person data
 - Contact person search data
4. Contact point data
 - Contact point search data
 - Email address contact point data
 - Phone number data
 - Postal address data
 - Web site data
5. Customer association data
 - Customer association search data
6. Customer data
 - Customer search data
 - Change customer data
 - Cooperate customer data
 - Group customer data
 - Individual customer data
7. Customer group data
8. Customer organization data
9. KB article data
 - Article search data
 - Article summary for version and pending
10. Routing queue
11. User data
 - User search data

Creating custom attributes

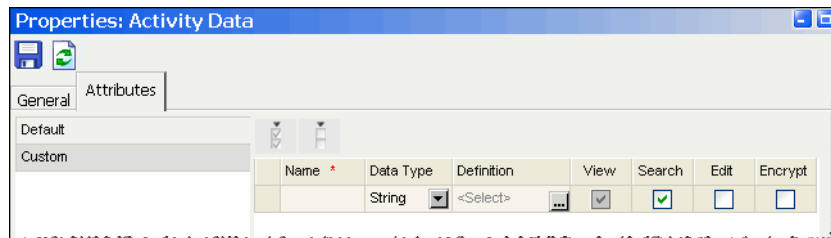


Important: Once you create a custom attribute it cannot be deleted and its properties cannot be changed.

To add a custom attribute

1. In the Tree pane, browse to **Tools** > *Partition name* > **Business Objects** > **Attribute settings** > **System**.
2. In the List pane, select the business object to which you want to add a custom attribute. You can add custom attributes to 11 business objects.

In the Properties pane the **Attributes** tab is selected automatically.



3. In the **Attributes** tab go to the **Custom** section and provide the following details.
 - **Name:** Type a name for the custom attribute.
 - **Data Type:** Select the type of data for the custom attribute. The options available are:
 - String
 - Integer
 - **Definition:** Click the **Assistance** button in the **Definition** field. **Define Custom Attribute** window appears. For the data type integer and string, different options are available.

For integer data type the data size nine is specified and it can't be changed. You can provide a default value for this field.

i. **Data size:** 9 and can't be changed.

ii. **Default value:** Provide the default value for the field.

For string data type:

- i. **Data size:** You can specify the maximum characters the custom attribute can have. The default value is eight. You can give a value between one and 4000. For example, if you give a value 10, then you cannot enter data exceeding 10 characters, in the custom field.
 - ii. **String type:** This option gives you the flexibility to define how the data can be entered in the custom field. You have three options available:
 - **User specified in a text box:** You can provide an empty field where the user can type any data. You can also give a default value for the field.
 - **User-selected in the list of choice below:** You can provide a list of possible values, from which the user can select one. You can also specify a default value for the field.
 - You can provide a list of possible values, from which the user can select multiple values. You can also select multiple default values for the field.
 - **View:** Select this option if you want to show this attribute in the screens at the department level.
 - **Search:** This feature is not available yet.
 - **Edit:** Select this option if you want to allow the agents to edit this field.
 - **Encrypt:** This option is enabled only if the data type selected is string.
4. Click the **Save** button.

Adding custom attributes to screens

After creating the custom attributes make sure you add them to the screens where you want them to show in the system. For details on how to add custom attributes to the screens see the section on “Configuring screen attributes for departments” on page 33. And for a list of screens to which you can add the attributes, see the appendix.

Creating macros for custom attributes

You can create macros for the custom attributes added to some of the business objects. For details see the Administration Console user's guide.



Custom values

- ▶ [Creating custom values](#)
- ▶ [Creating custom product types](#)
- ▶ [Creating custom activity types](#)

According to your business needs, you can add custom values to the following attributes of the business objects.

- ▶ Activity mode
- ▶ Activity type
- ▶ Activity status
- ▶ Case status
- ▶ Customer contact person type
- ▶ Customer country
- ▶ Customer group type
- ▶ Customer industry
- ▶ Customer level
- ▶ Customer organization type
- ▶ Customer region
- ▶ Customer web type
- ▶ Contact person ID type
- ▶ Currency type
- ▶ Product type
- ▶ User type
- ▶ User unavailability reason
- ▶ Web templates session entries

Things to note

- ▶ Once you save the custom value, the activity type, or its subtypes cannot be deleted. But you can add new subtypes to the custom values later.
- ▶ For product type you can make the subtypes active or inactive.

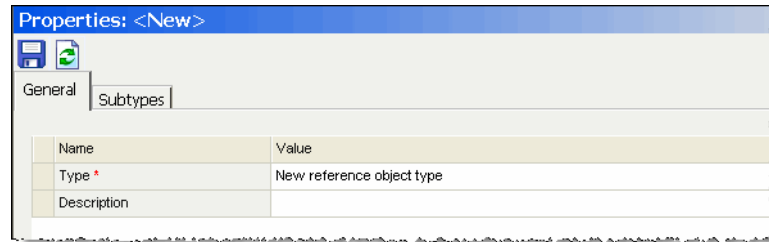
Creating custom values

To create a custom value

1. In the Tree pane, browse to **Tools> Partition name > Business Objects> Attribute values.**
2. Select the business object attribute to which you want to add a custom value.

3. In the List pane toolbar, click the **New** button.

The Properties pane refreshes to show the properties of the new attribute value.



4. In the Properties pane, go the **General** tab and provide the following details.
 - a. **Type**: Type a name of the new attribute value.
 - b. **Description**: Type a brief description.
5. Next, go to the **Subtype** tab.
 - **Name**: Type a name of the subtype.
 - **Description**: Type a brief description.

Press the ENTER key.
6. Click the **Save** button.

Creating custom product types

There are five predefined product types created in the system. They are:

- ▶ Credit Cards
- ▶ Finance
- ▶ Physical
- ▶ Software
- ▶ Wireless

To create a custom product type

1. In the Tree pane, browse to **Tools> Partition name > Business Objects> Attribute values > Product: Type**.
2. In the List pane toolbar, click the **New** button.

The Properties pane refreshes to show the properties of the new attribute value.
3. In the Properties pane, go the **General** tab and provide the following details.

- a. **Type:** Type a name of the new attribute value.
 - b. **Description:** Type a brief description.
4. Next, go to the **Subtype** tab.
 - **Name:** Type a name of the subtype.
 - **Description:** Type a brief description.
 - **Active:** Select **Yes** to make the product subtype active. Only active subtypes are available for use in the system.

Press the ENTER key.
 5. Click the **Save** button.

Creating custom activity types

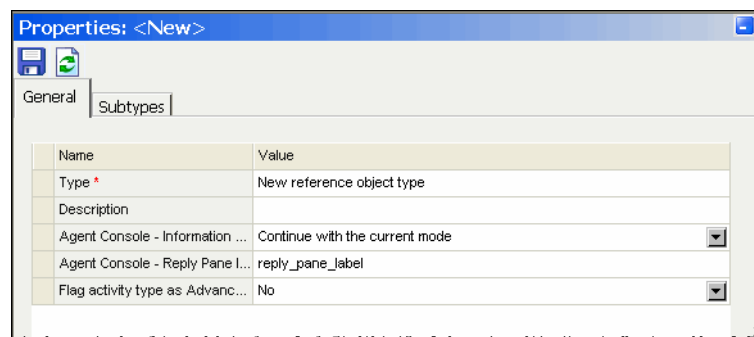
There are four predefined activity types created in the system. They are:

- ▶ Chat
- ▶ Email
- ▶ Phone
- ▶ Task

To create a new activity type

1. In the Tree pane, browse to **Tools> Partition name > Business Objects> Attribute values > Activity: Type**.
2. In the List pane toolbar, click the **New** button.

The Properties pane refreshes to show the properties of the new activity type.



3. In the Properties pane, go to the **General** tab and provide the following details.
 - **Type:** Type the name of new activity type.

- **Description:** Type a brief description.
 - **Agent Console - Information pane section:** From the dropdown select the information pane section that should open when the agent creates the activity.
 - **Agent Console - Reply pane label:** Type a label for the Reply pane.
 - **Flag activity type as Advanced Phone log:** Using this option you can determine if the activity type you are creating is a phone call type of activity or not. Select **Yes** to mark the activity type as phone call. By default **No** is selected.
4. Next go the **Subtypes** tab. Here you can create the subtypes of the new activity type. A predefined subtype, **General** is created for the activity type and it cannot be deleted. In addition to it you can add more subtypes.
- **Name:** Type a name for the subtype.
 - **Description:** Type a brief description.
- Press the ENTER key.
5. Click the **Save** button.



Important: Once you save the custom value, the activity type, or its subtypes cannot be deleted.

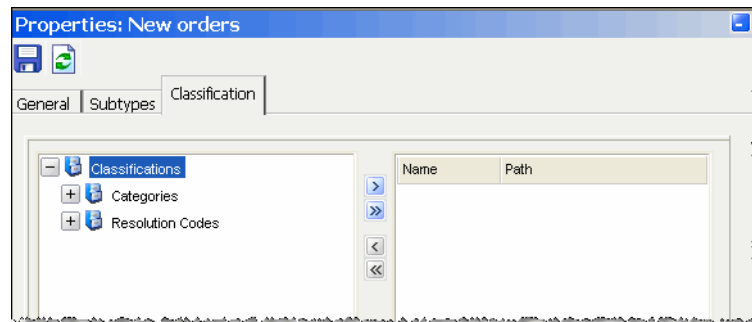
Associating classifications to activity types

For each department you can associate different classifications to the activity types. Whenever the agent creates a new activity of this type, the classifications associated with the activity type will be assigned to the activity.

To associate classifications to activity type

1. In the Tree pane, browse to **Tools > Department > Department name > Activity: Type.**
2. In the List pane select the activity type with which you want to associate a classification.

The Properties pane refreshes to show the properties of the activity type.



3. In the Properties pane, go to **Classifications** tab and select the resolution code and category you want to assign to the activity type.
4. Click the **Save** button.



Customer associations

- ▶ [Configuring customer associations](#)
- ▶ [Deleting customer associations](#)

Configuring customer associations

The system comes with a set of predefined customer associations. They are:

- ▶ Accounts: Predefined subtypes are saving, checking, and policy
- ▶ Contracts: Predefined subtypes are license, professional services, and non disclosure
- ▶ Products: You need to create the product catalog from the Administration Console.

To create a custom customer association

You can create custom customer associations at the department level.

1. In the Tree pane, browse to **Tools > Departments > Your department > Business Objects > Relationships > Customer Associations**.
2. In the List pane toolbar click the **New** button.

The Properties pane refreshes to show the properties of the new customer association.

Name	Value
Name *	New customer association
Description	
Articles	No
Attachments	No
Notes	No
Source for association subtypes	Product catalog
Active	Yes

3. In the Properties pane, go to the **General** tab and provide the following details.
 - **Name:** Type a name of the customer association.
 - **Description:** Type a brief description.
 - **Articles:** Select **Yes** if you want to allow agents to add articles to customer associations. By default **No** is selected.
 - **Attachments:** Select **Yes** if you want to allow agents to attach attachments to customer associations. By default **No** is selected.
 - **Notes:** Select **Yes** if you want to allow agents to add notes to the customer association. By default **No** is selected.
 - **Source for association subtypes:** From the dropdown select the source for association subtypes. There are two options available:

- Product catalog
- Subtype list
- **Active:** Select **Yes** if you want to make the customer association active. Only active customer associations are available to agents in the Agent Console.



Important: The **Subtype** tab is enabled only if you select the source for association subtype as **Subtype list**.

4. Next, go to **Subtypes** tab and provide the following details.
 - **Name:** Type the name of the subtype.
 - **Description:** Type a brief description.
 - **Active:** Select **Yes** if you want to make the subtype active or not. Only active subtypes are available to agents in the Agent Console.
5. Lastly, go to the **Relationships** tab and select the customer association to be associated with the customer association you are creating.
6. Click the Save button.

Deleting customer associations

To delete a customer association



Important: The predefined customer associations cannot be deleted.

1. In the Tree pane, browse to **Tools > Departments > Your department > Business Objects > Relationships > Customer Associations**.
2. In the List pane, select the customer association you want to delete.
3. Click the **Delete** button in the List pane toolbar.
4. A message appears, asking to confirm the deletion. Click **Yes** to delete the selected customer association.



Screen attribute settings

- ▶ [About customizing screens](#)
- ▶ [Configuring information pane section toolbar](#)
- ▶ [Configuring screen attributes for departments](#)
- ▶ [Configuring screen attributes for users](#)

About customizing screens

Tools Console provides you with the flexibility to customize various screens according to your business needs. For each department you can customize about 168 screens. You can enable, restrict, or reorder the attributes that can be viewed in these screens. You can also customize the Information pane section toolbar of the Agent Console by adding, removing, or changing the order of the section toolbar buttons. The customization of Information pane section toolbar can be done only at the partition level. The changes made at the partition level, take affect throughout the system.

Configuring information pane section toolbar

The system consists of 11 predefined information pane section toolbar buttons. Out of them, eight are available to all the agents and three are available to only the agents with specific licenses.

- ▶ The following buttons are available to all the agents.
 - **Activity Body**
 - **Activity Details**
 - **Case details**
 - **Customer**
 - **Customer History**
 - **Audit**
 - **Knowledge Base**
 - **Classification**
- ▶ The **Links** button is available to only the agents with **Data Adapter** license.
- ▶ The following buttons are available only to the agents with **Cisco Unified Web Interaction Manager** license.
 - **Web Collaboration**
 - **Screen Capture**

You can make the following changes to the buttons of the Information pane section toolbar of the Agent Console.

- ▶ Change the order of buttons
- ▶ Remove buttons

- ▶ Add custom buttons
- ▶ Change the shortcut keys for buttons



Important: These changes are made at the partition level and take affect throughout the system.

Changing the order of buttons

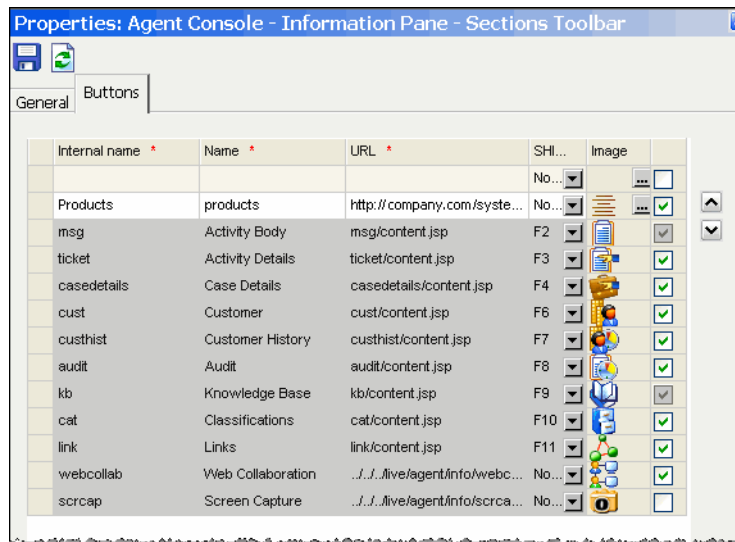
The default order of the buttons is:

1. Activity Body
2. Activity Details
3. Case details
4. Customer
5. Customer History
6. Audit
7. Knowledge Base
8. Classification
9. Links
10. Web Collaboration
11. Screen Capture

To change the order of buttons

1. In the Tree pane, browse to **Tools** > *Partition name* > **Business Objects** > **Attributes Settings** > **Screen** > **Toolbar**.
2. In the List pane select, **Agent Console - Information Pane - Sections Toolbar**.

In the Properties pane, the **Buttons** tab is selected automatically. It shows a list of the Information pane toolbar buttons.



3. In the **Buttons** tab, select the button you want to move up or down the order, and click the **Move up** or **Move down** button.
4. Click the **Save** button.

Removing buttons

You can remove buttons from the information pane section toolbar, if agents don't use them or you don't want them to use.

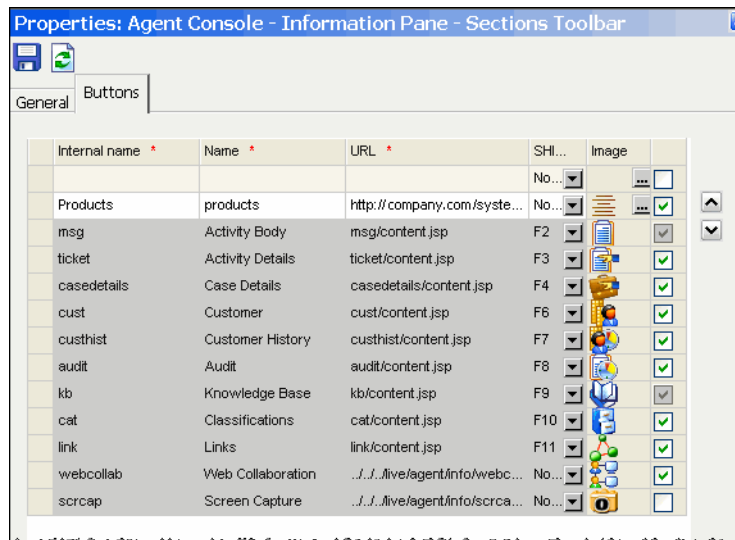
Things to note

- ▶ The **Activity Body** and **Knowledge Base** buttons cannot be removed.
- ▶ The changes are made at the partition level and take affect throughout the system.

To remove a button

1. In the Tree pane, browse to **Tools** > *Partition name* > **Business Objects** > **Attributes Settings** > **Screen** > **Toolbar**.
2. In the List pane select, **Agent Console - Information Pane - Sections Toolbar**.

In the Properties pane, the **Buttons** tab is selected automatically. It shows a list of the Information pane toolbar buttons.



3. In the **Buttons** tab, in the **Visible** field, uncheck the option for the buttons you want to remove from the Information pane section toolbar of the Agent Console.
4. Click the **Save** button.

Adding custom buttons

Before adding the buttons to the Information pane section toolbar, you need to first create the buttons and add them to the custom folder on the file server.

Creating custom buttons

To create a button

1. First, create a button of size 24 x 24 pixels and save it as a GIF FILE (.gif).
2. Then, go to the file server and add the button to the custom folder at the following location.

server-name\cim_home\web\image\platform\custom

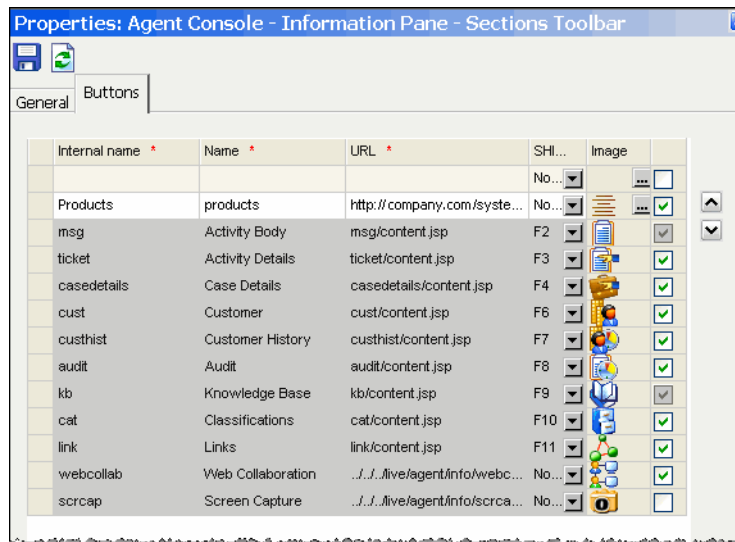
The added image becomes available in the Tools Console for adding in the Information pane section toolbar.

Adding custom buttons to the information pane section toolbar

To add a button

1. In the Tree pane, browse to **Tools** > *Partition name* > **Business Objects** > **Attributes Settings** > **Screen** > **Toolbar**.
2. In the List pane select, **Agent Console - Information Pane - Sections Toolbar**.

In the Properties pane, the **Buttons** tab is selected automatically. It shows a list of the Information pane section toolbar buttons.



3. In the **Buttons** tab, provide the following details.
 - **Internal name:** Type the internal name of the button.



Important: The internal name cannot have numbers only, and you can't use spaces in the internal name.

- **Name:** Type the name of the button as it should appear in the Agent Console.
- **URL:** Type the URL of the website or file that you want to access using this button. You can give the URL of a website such as <http://www.company.com> or point to the portal configured using web templates.
- **SHIFT+CTRL shortcut:** Select a shortcut key for the button.
- **Image:** Click the **Assistance** button in the **Image** field. **Select Image** window appears. From the window, select the image you want to use for the button and click the **OK** button.

- **Visible:** Select the option if you want to make the button visible in the Information pane, in the Agent console.

After providing all the values, press the ENTER key.

4. Click the **Save** button.

Deleting custom buttons



Important: The predefined buttons cannot be deleted.

To delete a custom button

1. In the Tree pane, browse to **Tools** > *Partition name* > **Business Objects** > **Attributes Settings** > **Screen** > **Toolbar**.
2. In the List pane select, **Agent Console - Information Pane - Sections Toolbar**.
In the Properties pane, the **Buttons** tab is selected automatically. It shows a list of the Information pane toolbar buttons.
3. Select the button you want to delete and press the DELETE key.
The selected button is deleted.
4. Click the **Save** button.

Changing the shortcut key for the buttons

The shortcut keys can provide quick and easy access to various sections of the Information pane section toolbar. Shortcut keys help to reduce the number of clicks saving your agents time.

You can change the shortcut keys for the predefined buttons and also the customs buttons.

Things to note

- You can use one of the following function keys in the shortcut key.
 - F2
 - F3
 - F4
 - F6
 - F7
 - F8

- F9
- F10
- F11
- F12
- The same function key cannot be assigned to multiple buttons.
- For the ease of the agents make sure that you don't change the shortcut keys too often because the agents would have to unlearn and learn the shortcut keys again and again. And, if you do need to change them any time, as a best practice you can notify them about the changes, so that they are aware of them.

To change the shortcut keys of the buttons

1. In the Tree pane, browse to **Tools** > *Partition name* > **Business Objects** > **Attributes Settings** > **Screen** > **Toolbar**.
2. In the List pane select, **Agent Console - Information Pane - Sections Toolbar**.
3. In the Properties pane, the **Buttons** tab is selected automatically. It shows a list of the information pane section toolbar buttons.
4. In the **Buttons** tab, in the **Ctrl + Shift shortcut** field, select the function key you want to assign to the button.
5. Click the **Save** button.

For example, you assign the shortcut key F4 to Activity Body button, the agent can quickly access Activity Body section using the shortcut key Ctrl + Shift + F4.

Configuring screen attributes for departments

For each department, you can customize 168 screens. You can specify which attribute you want to show in the screens and the order in which they should appear. In all the screens there are some attributes which cannot be removed from them.

To customize a screen

1. In the Tree pane, browse to **Tools** > **Departments** > *Department name* > **Business Objects** > **Attribute Settings** > **Screen**.
2. In the List pane, select the screen you want to customize.

For a list of screens that can be modified see the Appendix.

3. In the Properties pane, go to the **Attributes** tab and do the following.
 - Select the attributes you want to add to the screen.
 - In the selected attributes list, specify if you want display the attribute or not.
 - Also, you can change the order of the attributes. Select the attribute you want to move up or down the order and click the **Move up** or **Move down** button.
4. Click the **Save** button.

Configuring screen attributes for users

These are department specific settings. They let you restrict or allow a particular user to view or edit a particular attribute of a business object. Using this tool, you can control the level of access a user has in the system.

You can create multiple user attribute settings for various users depending on the expected level of their functioning. For example; a normal user in the system will not have the level of access similar to his supervisor.

Agent, manager, supervisor, etc., can be user attribute settings with different access levels determined in the system. Whenever a new user is created in the system, the administrator can assign one of the pre-determined user attribute settings to the user to function accordingly.



New activity shortcuts

- ▶ [Preparing for creating new activity shortcuts](#)
- ▶ [Creating new activity shortcut](#)
- ▶ [Deleting new activity shortcuts](#)

Preparing for creating new activity shortcuts

Before creating the new activity shortcut:

- ▶ Create the custom activity types for which you want to create new activity shortcuts
- ▶ Create the activity modes you want to use for the new activity shortcuts
- ▶ Create the custom attributes you want to use in the new activity shortcut. You can use the custom attributes added to the business objects customer, contact point, and contact person.
- ▶ For the custom attributes you use in the new activity shortcut, make sure that you make them visible at the department level. You need to add the custom attributes to the following screens.
 - Contact point: **Search contact point criteria relationship name**
 - Contact person: **Search contact person criteria relationship name**
 - Customer: **Search customer criteria relationship name**

If you don't add the custom attributes to the screens at the department level, then the agents of that department will not be able to use the new activity shortcut.

Creating new activity shortcut

The partition administrator can create new activity shortcuts from the Tools Console.

The new activity shortcuts are created at the partition level and are available to all the agents in all the departments.

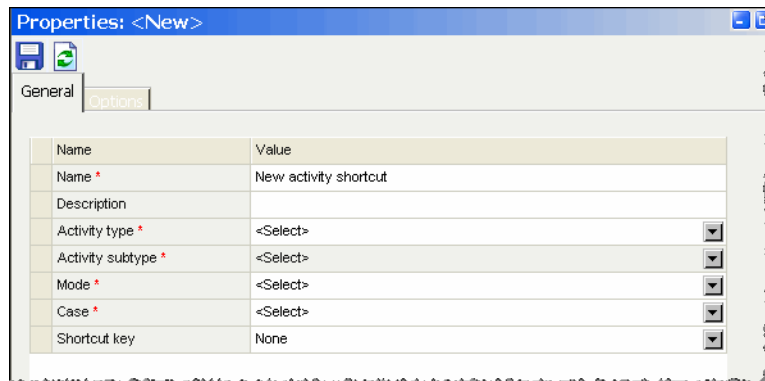
The predefined shortcuts are:

- ▶ **Outbound email**

To create a new activity shortcut

1. In the Tree pane, browse to **Tools** > *Partition name* > **Business Objects** > **New Activity Shortcuts**.
2. In the List pane toolbar, click the **New** button.

The Properties pane refreshes to show the properties of the new activity shortcut.



3. In the Properties pane, go to the **General** tab and provide the following details.

- **Name:** Type a name of the new activity shortcut. Use a name that clearly indicates what the activity shortcut is for, so that the agents can identify them easily.
- **Description:** Type a brief description.
- **Activity type:** Select the activity type for which you want to create a shortcut.
- **Activity subtype:** Select the activity subtype.
- **Mode:** Select the activity mode. The options available are, inbound, outbound, and none.

You can add custom modes to this list. For details see the chapter on “Custom values” on page 17.

- **Case:** Specify if you want to create a new case for the activity created using the new activity shortcut. The options available are:
 - **Current:** The case of the currently selected activity in the inbox is assigned to the new activity being created.
 - **New:** A new case is created for the activity.
 - **None:** No case is created to the activity.
- **Shortcut key:** Select a shortcut key for the new activity shortcut. You can assign a FUNCTION KEY from **F2, F3, F4, F6, F7, F8, F9, F10, and F12**. Select **None** if you don't want to assign a shortcut key to the new activity shortcut.

For the ease of the agents make sure that you don't change the shortcut keys too often because the agents will have to unlearn and learn the shortcut keys again and again. And, if you do need to change them any time, as a best practice you can notify them about the changes so that they are aware of them and are prepared for it.

4. Next, go to the **Options** tab and configure the attributes the agent should be asked to provide for creating new activities. To accurately identify the customer on the phone, multiple search attributes can be provided.



Important: The Options tab is enabled only if in the General tab you select the case as new or none.

- Select the attribute that the agent should be asked to provide when this new activity shortcut is used. The following attributes of the business objects are available.

Properties: New orders

General Options

Select the attribute that the agent will be prompted to enter when this new activity shortcut is used.

Name	Operator	Re...	Bo...
Email address	=	<input type="checkbox"/>	A...
Phone number	=	<input checked="" type="checkbox"/>	A...
First name	=	<input type="checkbox"/>	A...
Last name	=	<input type="checkbox"/>	A...

If Customer is not found in customer record: <Select>

Accommodate Information only calls: Yes

Information pane section to be focused: kb

- i. **Case:** Case ID
- ii. **Contact point:** Email address, phone number, complete address, URL
- iii. **Customer:** Customer name, level
- iv. **Contact person:** First name, middle name, last name

You can also use the custom attributes added to the business objects contact point, contact person, and customer.



Important: If you are using any custom attributes in the new activity shortcut, make sure you add them to the screens at the department level.

- For the selected attributes specify the following.
 - i. **Operator:** The options available are, =, !=, >, <, begins with, contains, does not contain, and ends with. For case ID only the operator EQUAL TO (=) can be used.
 - ii. **Required:** At least one attribute should be marked as required.

iii. **Boolean:** Select from the boolean AND and OR.



Important: For best performance on searching these attributes they should be indexed in the database. Please contact your system administrator or database administrator for steps to index the specific attributes in the database.

- **If customer is not found in customer record:** There are three options available:
 - **Create a customer and continue**
 - **Do not create a customer and continue**
 - **Show an error message**
-



Important: This option is available only if you select the attribute, email address.

- **Accommodate Information only calls:** Select **Yes** if you want to allow agents to create information only calls. By default No is selected. When an agent creates an information only call:
 - The Information pane in the Agent Console will maximize to cover the agent work area.
 - An activity will be created with no case and anonymous customer.
 - **Information pane section to be focused:** Select the Information pane section to be open when an information only call is created.
5. Click the **Save** button.

Deleting new activity shortcuts

To delete a new activity shortcut

1. In the Tree pane, browse to **Tools > Partition name > Business Objects> New activity shortcut**.
2. In the List pane, select the new activity shortcut you want to delete.
3. In the List pane toolbar, click the **Delete** button
4. A message appears asking to confirm the deletion. Click **Yes** to delete the selected new activity shortcut.

Appendix: Reference information

- ▶ [Custom attributes](#)
- ▶ [Customizable screens](#)
- ▶ [Editable screens](#)
- ▶ [Predefined attribute values](#)

Custom attributes

You can add custom attributes to the following business objects.

1. Activity data
 - Activity search data
 - Generic activity data
2. Case data
 - Case search data
3. Contact person data
 - Contact person search data
4. Contact point data
 - Contact point search data
 - Email address contact point data
 - Phone number data
 - Postal address data
 - Web site data
5. Customer association data
 - Customer association search data
6. Customer data
 - Customer search data
 - Change customer data
 - Cooperate customer data
 - Group customer data
 - Individual customer data
7. Customer group data
8. Customer organization data
9. KB article data
 - Article search data
 - Article summary for version and pending
10. Routing queue
11. User data
 - User search data

Customizable screens

Activity data

1. Admin workflow alarm activity
2. Admin workflow condition
3. Admin workflow modify object
4. Agent activity body chat general
5. Agent activity detail name
6. Agent activity details chat general
7. Agent activity details web activity general
8. Agent case details activity details name
9. Agent case details activity list name
10. Agent close case name
11. Agent customer history activity details
12. Agent customer history activity list
13. Agent inbox activity list
14. Agent inbox chat activity list
15. Agent monitor inbox chat activity list
16. Agent pull activity screen
17. Agent reply properties
18. Agent transfer activity name
19. Search customer activity result name

Activity search data

1. Search activity criteria relationship name
2. Search customer service activity criteria advanced
3. Search customer service activity criteria basic

Generic activity data

1. Agent activity body task general
2. Agent activity details phone general
3. Agent activity details task general
4. Agent activity body <custom activity type> general

5. Agent activity details <custom activity type> general
6. Agent reply <custom activity type> general

KB article data

1. Agent KB article property
2. KB article general property
3. Q & A search solutions
4. Search customer article result name
5. Search knowledge article criteria result name
6. Web templates -configurations article attributes

Article search data

1. Search customer article advanced criteria name
2. Search customer article criteria name
3. Search knowledge article criteria advanced name
4. Search knowledge article criteria basic name
5. Web templates -configurations article list attributes
6. Web templates -configurations searchable attributes

Article summary for version and pending

1. Agent KB pending article list
2. KB article all version list

Case data

1. Admin workflow alarm case
2. Admin workflow condition
3. Admin workflow modify object
4. Agent case details case details name
5. Agent case details related cases name
6. Agent customer history case details
7. Agent customer history case list
8. Agent inbox case list
9. Search customer service case result

Case search data

1. Search case criteria relationship name
2. Search customer service case criteria advanced
3. Search customer service case criteria basic

Contact person data

1. Admin workflow condition
2. Admin workflow modify object
3. Agent customer details contact person details
4. Agent customer details contact person list
5. Agent inbox activity list
6. Agent inbox chat activity list
7. Agent monitor inbox chat activity list
8. Search contact person result name

Contact person search data

1. Search contact person criteria advanced name
2. Search contact person criteria basic name
3. Search contact person criteria relationship name
4. Search contact point result name

Contact point data

1. Agent customer details contact point list
2. Search contact point result name

Email address contact point data

- ▶ Agent customer details contact point details for email

Phone number data

- ▶ Agent customer details contact point details for phone

Postal address data

- ▶ Agent customer details contact point details for postal

Web site data

- ▶ Agent customer details contact point details for web

Contact point search data

1. Search contact point criteria basic name
2. Search contact point criteria relationship name
3. Search contact point criteria advanced name

Customer association data

1. Agent customer association details
2. Agent customer association list
3. Customer accounts details
4. Customer contract details
5. Customer Product details

Customer association search data

1. Search association types criteria relationship name
2. Search customer service association types criteria basic

Customer data

1. Admin workflow condition
2. Admin workflow modify object
3. Search customer criteria result name
4. Search contact point result name

Change customer data

None

Cooperate customer data

- ▶ Agent customer detail cooperate customer details

Group customer data

- ▶ Agent customer detail group customer name

Individual customer data

- ▶ Agent customer details individual customer name

Customer search data

1. Search customer basic criteria name
2. Search customer criteria relationship name

Customer group data

1. Admin workflow condition
2. Admin workflow modify object

Customer organization data

1. Admin workflow condition
2. Admin workflow modify object

Routing queue

1. Admin workflow condition
2. Admin workflow queue property general
3. Agent inbox activity list
4. Agent inbox chat activity list
5. Agent monitor inbox chat activity list
6. Agent transfer activity name

User data

1. Admin user property custom
2. Admin workflow condition
3. Agent transfer activity name
4. Agent monitor inbox chat activity list

User search data

- ▶ Search admin criteria basic name

Editable screens

1. Admin data usage link group property formatting
2. Admin data usage link property formatting
3. Admin workflow create object
4. Admin workflow queue property media
5. Admin workflow queue property phone media
6. Agent activity body attachment name
7. Agent customer association type list
8. Agent data usage link links
9. Agent KB article folder list
10. Agent reply web activity general
11. Bitmaps
12. CCB phone link list
13. CCB phone link property
14. Content adapter collections
15. Content adapter logging
16. Content adapter performance
17. Content adapters
18. KB article folder list
19. KB article tssevents list
20. KB folder general property
21. KB useful items folder properties
22. Knowledge profiles

23. Lotus notes authentication
24. Release list
25. Release properties
26. Scap_knowledge_object_list
27. Scap_knowledge_release_list
28. Scap_search_knowledge_answerset_criteria_advanced_name
29. Scap_search_knowledge_answerset_criteria_basic_name
30. Scap_search_knowledge_answerset_criteria_result_name
31. Scap_search_knowledge_authorcase_criteria_advanced_name
32. Scap_search_knowledge_authorcase_criteria_basic_name
33. Scap_search_knowledge_authorcase_criteria_result_name
34. Scap_search_knowledge_controlaction_criteria_advanced_name
35. Scap_search_knowledge_controlaction_criteria_basic_name
36. Scap_search_knowledge_controlaction_criteria_result_name
37. Scap_ss_configuration_cust_case_name
38. Scap_ss_configuration_cust_profile_attributes_name
39. Scap_ss_configuration_cust_link_name
40. Scap_ss_configuration_related_articles_attributes_case_name
41. Search attachment criteria relationship name
42. Search contact point 2 criteria relationship name
43. Search customer service classification criteria relationship
44. Search knowledge classification criteria relationship
45. Search knowledge attachment criteria relationship
46. Search knowledge cluster criteria advanced
47. Search knowledge cluster criteria basic
48. Search knowledge cluster criteria results
49. Search knowledge question criteria advanced
50. Search knowledge question criteria basic
51. Search knowledge question results
52. Setting agent console
53. Siteserver authentication
54. Verity authentication
55. Web templates - configurations general
56. Web templates - configurations guided help
57. Web templates - configurations list

58. Web templates - template sets general properties
59. Web templates - template sets list
60. Web templates - topics list
61. Web templates - topics properties

Custom attributes available in new activity shortcuts

- ▶ Contact point: Search contact point criteria relationship name
- ▶ Contact person: Search contact person criteria relationship name
- ▶ Customer: Search customer criteria relationship name

Predefined attribute values

Activity: Mode

1. Inbound
2. Outbound
3. None

Activity: Type

1. Chat
2. Email
3. Phone
4. Task

Activity: Status

1. Assigned
2. Assignment
3. Completed
4. New
5. Pre_completion
6. Preworkflow

7. Workflow

Case: Status

1. Closed
2. Open
3. Ready for closure

Chat: Status

1. Agent not connected
2. Customer exited chat
3. Waiting for customer to reply
4. Waiting for you to reply

Contact person: ID type

1. License
2. Passport
3. SSN

Currency: Type

1. Euro
2. UK Pound
3. USD
4. Yen

Customer: Contact person type

1. Billing
2. Legal
3. Shipping
4. Technical

Customer: Country

1. Afganistan
2. Albania
3. Algeria
4. Andorra
5. Angola
6. Anguilla
7. Antarctica
8. Antigua and Barbuda
9. APO
10. Argentina
11. Armenia
12. Aruba
13. Australia
14. Austria
15. Azerbaijan
16. Bahamas
17. Bahrain
18. Bangladesh
19. Barbados
20. Belarus
21. Belgium
22. Belize
23. Benin
24. Bermuda
25. Bhutan
26. Bolivia
27. Bosnia AHerzegovina
28. Botswana
29. Bouvet Island
30. Brazil
31. British Industry Ocean Territory
32. British Virgin Islands
33. Brunei
34. Bulgaria

35. Burkina Faso
36. Burundi
37. Cambodia
38. Cameroon
39. Canada
40. Cape Verde
41. Cayman Islands
42. Central African Republic
43. Chad
44. Chile
45. China
46. Christmas Island
47. Colombia
48. Cocos Island
49. Comoros
50. Congo
51. Cooks Islands
52. Costa Rica
53. Cote D'Ivoire
54. Croatia
55. Cuba
56. Cyprus
57. Czech Republic
58. Denmark
59. Djibouti
60. Dominica
61. Dominican Republic
62. East Timor
63. Ecuador
64. Egypt
65. El Salvador
66. Equatorial Guinea
67. Eritrea
68. Estonia
69. Ethiopia

70. Falkland Islands
71. Faroe Islands
72. Fiji
73. Finland
74. FPO
75. France
76. French Guiana
77. French Polynesia
78. French Sourthern Territories
79. Gabon
80. Gambia
81. Georgia
82. Germany
83. Ghana
84. Gibraltar
85. Greece
86. Greenland
87. Grenasa
88. Guadeloupe
89. Guam
90. Guatemala
91. Guinea
92. Guinea Bissau
93. Guyana
94. Haiti
95. Heard and McDonald Islands
96. Honduras
97. Hong Kong
98. Hungary
99. Iceland
- 100.India
- 101.Indonesia
- 102.Iran
- 103.Iraq
- 104.Ireland

- 105. Israel
- 106. Italy
- 107. Jamaica
- 108. Japan
- 109. Jordan
- 110. Kazakhstan
- 111. Kenya
- 112. Kiribati
- 113. Kitts and Nevis
- 114. Kuwait
- 115. Kyrgyzstan
- 116. Laos
- 117. Latvia
- 118. Lebanon
- 119. Lesotho
- 120. Liberia
- 121. Libya
- 122. Liechtenstein
- 123. Lithuania
- 124. Luxembourg
- 125. Macau
- 126. Macedonia
- 127. Madagascar
- 128. Malawi
- 129. Malaysia
- 130. Maldives
- 131. Mali
- 132. Malta
- 133. Marshall Islands
- 134. Martinique
- 135. Mauritania
- 136. Mauritius
- 137. Mayotte
- 138. Mexico
- 139. Micronesia

- 140.Moldova
- 141.Monaco
- 142.Mongolia
- 143.Montserrat
- 144.Morocco
- 145.Mozambique
- 146.Myanmar
- 147.Namibia
- 148.Nauru
- 149.Nepal
- 150.Netherlands
- 151.Netherlands Antilles
- 152.New Caledonia
- 153.New Zealand
- 154.Nicaragua
- 155.Niger
- 156.Nigeria
- 157.Niue
- 158.Morfolk Island
- 159.North Korea
- 160.Northern Mariana Islands
- 161.Norway
- 162.Oman
- 163.Pakistan
- 164.Palau
- 165.Panama
- 166.Papua New Guinea
- 167.Paraguay
- 168.Peru
- 169.Philippines
- 170.Pitcairn Island
- 171.Poland
- 172.Portugal
- 173.Puerto Rico
- 174.Quatar

- 175.Reunion
- 176.Romnia
- 177.Russia
- 178.Rwanda
- 179.Saint Helena
- 180.Saint Kitts and Nevis
- 181.Saint Pierre and Miquelon
- 182.Saint Vincent and the Grenadines
- 183.Saint Lucia
- 184.Samoa American
- 185.Samoa Western
- 186.San Marino
- 187.Sao Tome and Principe
- 188.Saudi Arabia
- 189.Senegal
- 190.Seychelles
- 191.Sierra Leone
- 192.Singapore
- 193.Slovakia
- 194.Slovenia
- 195.Solomon Islands
- 196.Somalia
- 197.South Africa
- 198.South Georgia
- 199.South Korea
- 200.Spain
- 201.Sri Lanka
- 202.Sudan
- 203.Suriname
- 204.Svalbard and Jan Mayen Islands
- 205.Swaziland
- 206.Sweden
- 207.Switzerland
- 208.Syria
- 209.Taiwan

- 210. Tazikistan
- 211. Tanzania
- 212. Thailand
- 213. Togo
- 214. Tokelau
- 215. Tonga
- 216. Trinidad and Tobago
- 217. Tunisia
- 218. Turkey
- 219. Turkmenistan
- 220. Turks and Caicos Islands
- 221. Tuvalu
- 222. Uganda
- 223. United Kingdom
- 224. Ukraine
- 225. United Arab Emirates
- 226. United States Minor Outlying Islands
- 227. Uruguay
- 228. United States
- 229. Uzbekistan
- 230. Vanuatu
- 231. Vatican City
- 232. Venezuela
- 233. Vietnam
- 234. Virgin Islands
- 235. Walls and Futuna
- 236. Western Sahara
- 237. Yemen
- 238. Yugoslavia
- 239. Zambia
- 240. Zimbabwe

Customer: Group type

1. Association
2. Club
3. Household
4. Joint account
5. Membership
6. Other

Customer: Industry

1. Finance
2. Health care
3. Telecom

Customer: Level

1. Gold
2. Platinum
3. Premium
4. Silver
5. Standard

Customer: Organization type

1. Non-profit
2. Other
3. Partnership
4. Private
5. Public
6. Sole-proprietor

Customer: Region

1. Asia Pacific
2. Europe
3. United States

Customer: Webtype

1. AOL
2. MSN
3. URL
4. Yahoo

Product: Type

1. Credit Cards
2. Finance
3. Physical
4. Software
5. Wireless

User: Type

1. Anonymous user
2. Authenticated agent
3. Authenticated customer
4. Identified agent
5. Identified customer

User: Unavailability reason

—