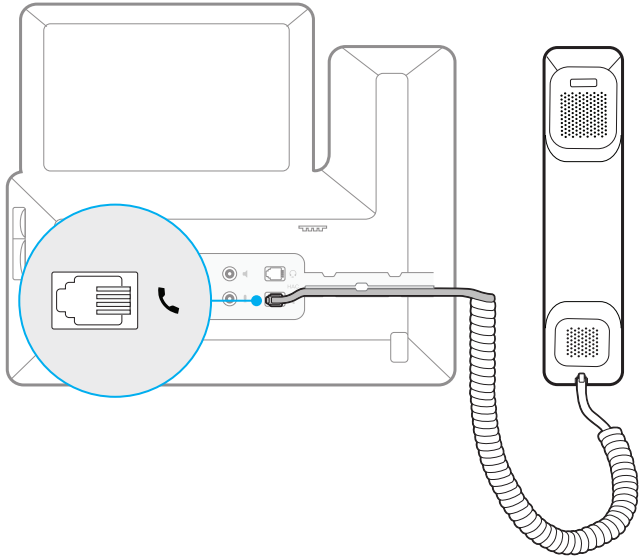
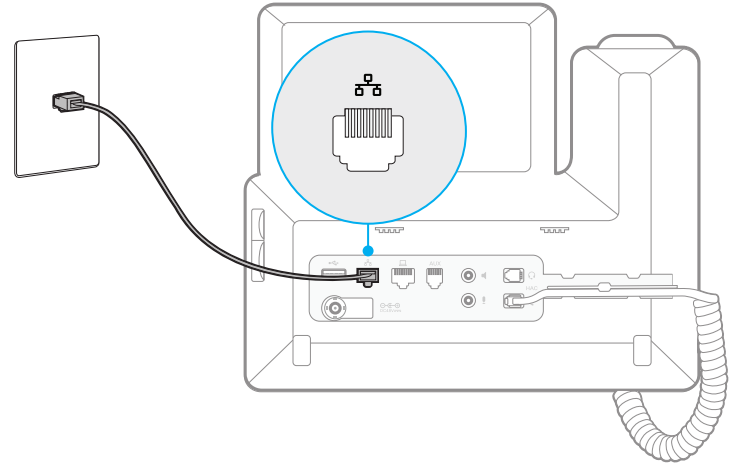


1

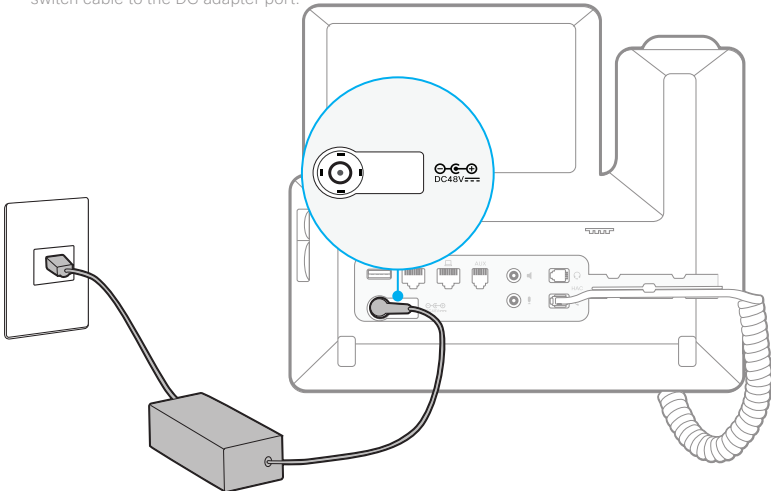


2

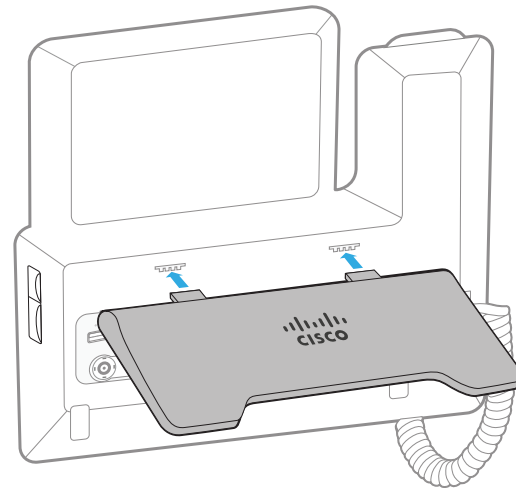


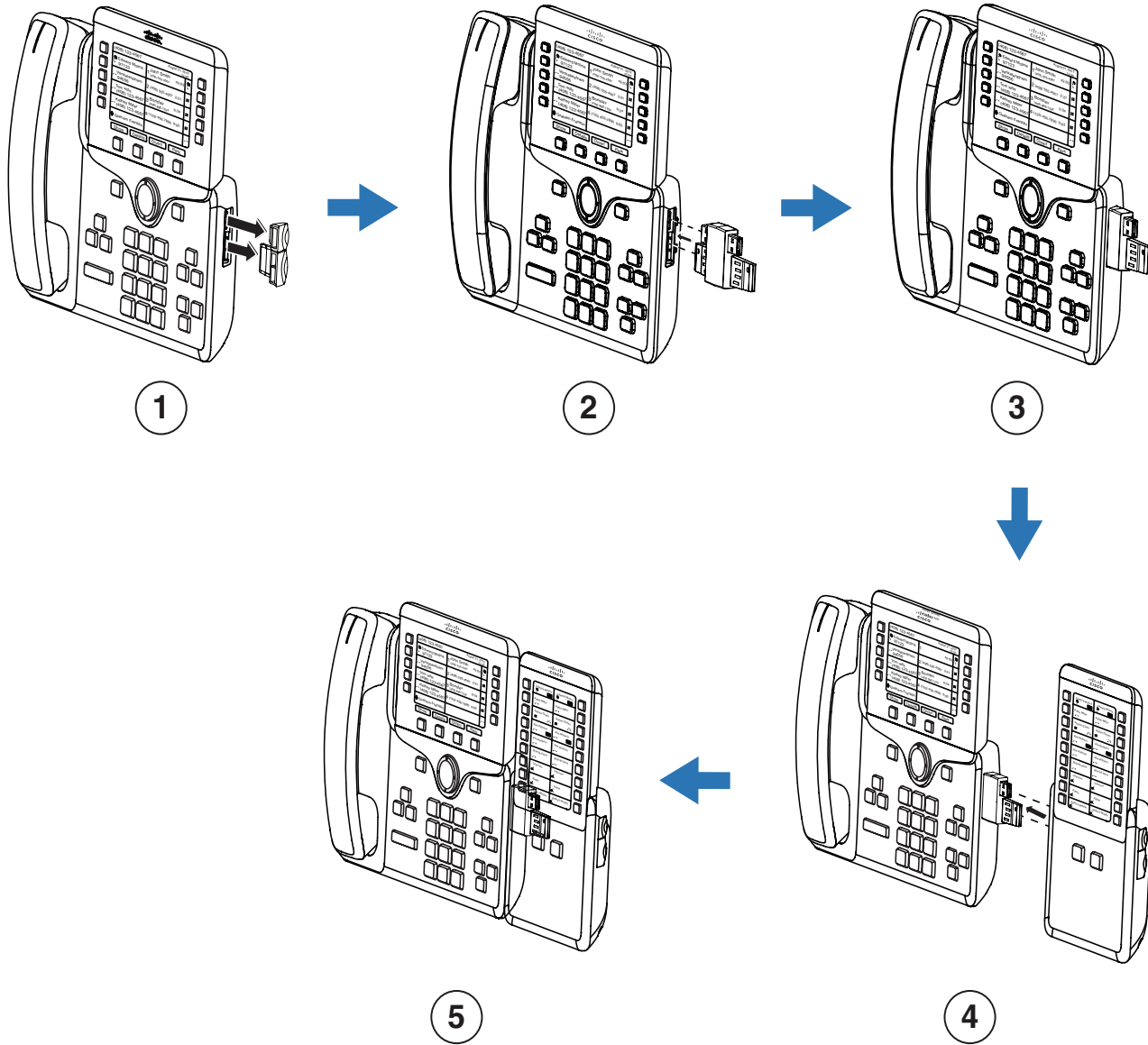
3

**Note:** In the EU and UK, your Cisco IP Phone 8811, 8841, 8851, and 8861 is shipped with a power switch cable that is required in order to provide power to your phone when using an AC-to-DC power supply. This cable only works with the power cube 4 power adapter that is shipped together (P/N 341-100594-01 and above). Connect the power cord to the power switch cable and then connect the other end of the power switch cable to the DC adapter port.



4





461075