



Cisco Prisma Model 6940/6944 Optoelectronic Node Dual AC Jumper Installation Instructions

Overview

The Cisco® Prisma® Model 6940/6944 dual AC jumper completes the circuit between ports 5 and 6, allowing AC power to be fed into one of the ports and tapped off the other port, while not interfering with the operation of the node. The dual AC jumper is designed to plug into the power director location for ports 5 and 6. Refer to the illustration on the next page.



Warning:

- Avoid personal injury! Use of controls, adjustments, or procedures other than those specified herein may result in hazardous radiation exposure.
- Avoid personal injury! The laser light source on this equipment emits invisible laser radiation. Avoid direct exposure to the laser light source.

Purpose

This document describes the procedure for installing the dual AC jumper in a Prisma Model 6940 or 6944 Optoelectronic Node.

Audience

These installation instructions are intended for technicians installing the Prisma Model 6940/6944 Optoelectronic Node dual AC jumper.

Document Version

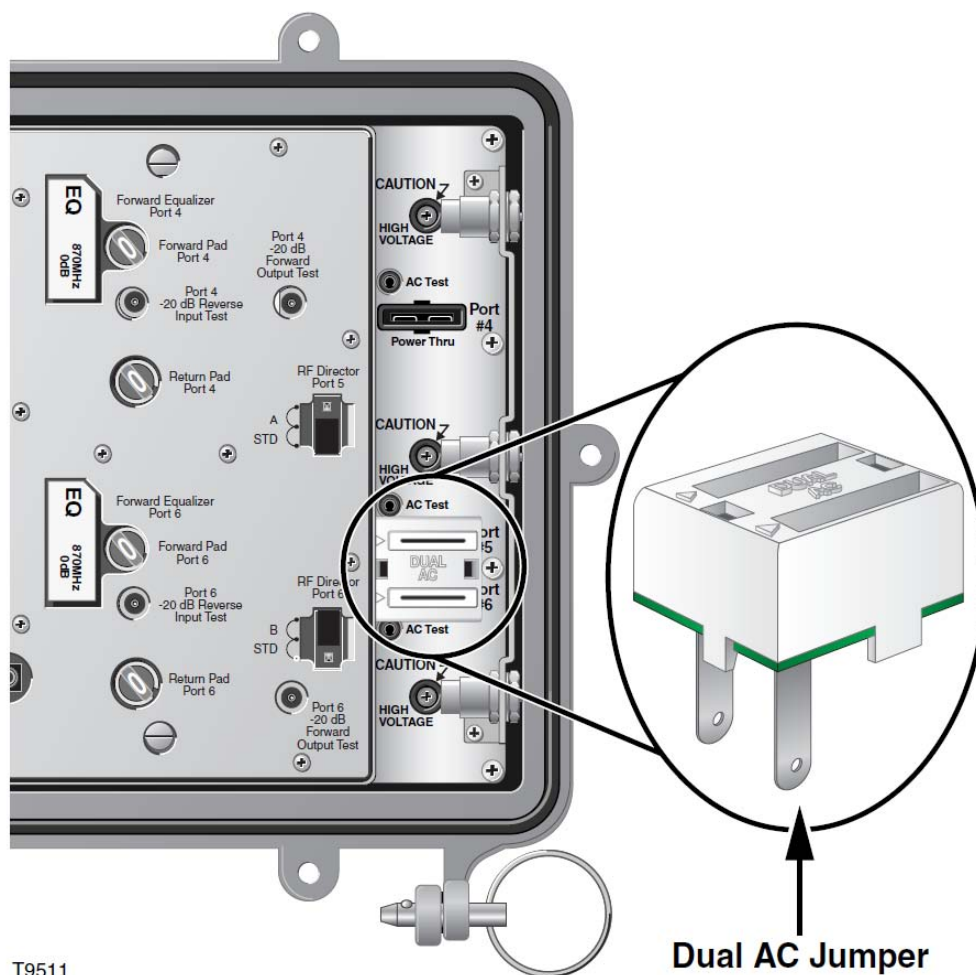
This is the second formal release of this document. In addition to minor text and graphic changes, the following table provides the technical changes to this document.

Description	See Topic
Apply Cisco document format and branding.	Affects entire document.

Installing the Dual AC Jumper

Follow these instructions to install the dual AC jumper.

- 1 Disconnect power to the unit.
- 2 Open the lid of the unit to be upgraded with the dual AC jumper.
- 3 Remove the power directors (part number 731297), if any, from the "Power Thru" locations at ports 5 and 6.
- 4 Install the dual AC jumper (part number 746918) by aligning the text on the top of the jumper to the text on the cover of the node entry board.
Align the blades and push down on the jumper to secure a good connection.
(Blades should be closer to the amplifier.)



Note: Make sure that the jumper is plugged in right side up as shown in the illustration.

- 5 Close and fasten the lid per Cisco guidelines. Refer to the node installation guide for further instructions.

Result: The unit is ready for operation.

For Information

If You Have Questions

If you have technical questions, call Cisco Services for assistance. Follow the menu options to speak with a service engineer.



Cisco Systems, Inc.
5030 Sugarloaf Parkway, Box 465447
Lawrenceville, GA 30042

678 277-1120
800 722-2009
www.cisco.com

Cisco and the Cisco logo are trademarks or registered trademarks of Cisco and/or its affiliates in the U.S. and other countries. A listing of Cisco's trademarks can be found at **www.cisco.com/go/trademarks**.

Third party trademarks mentioned are the property of their respective owners.

The use of the word partner does not imply a partnership relationship between Cisco and any other company. (1009R)

Product and service availability are subject to change without notice.

© 2001, 2011 Cisco and/or its affiliates. All rights reserved.

October 2011 Printed in USA

Part Number 747786 Rev B