

TANDBERG

Video Switch

Software Release Notes

Software Version ID: 40006

D50524 Revision 1.4

May 2012

TABLE OF CONTENTS

TABLE OF CONTENTS	2
Document Revision History	3
SOFTWARE RELEASE NOTES FOR TANDBERG VIDEO SWITCH VERSION ID 40006	4
Introduction	4
Changes and Improvements since Previous Version.....	4
<i>Video</i>	4
Known Limitations.....	4
<i>TANDBERG</i>	4
SOFTWARE RELEASE NOTES FOR TANDBERG VIDEO SWITCH VERSION ID 40005	5
Introduction	5
Changes and Improvements since Previous Version.....	5
<i>Video</i>	5
Known Limitations.....	5
<i>TANDBERG</i>	5
SOFTWARE RELEASE NOTES FOR TANDBERG VIDEO SWITCH VERSION ID 40004	6
Introduction	6
Changes and Improvements since Previous Version.....	6
<i>Usability</i>	6
Known Limitations.....	6
<i>TANDBERG</i>	6
SOFTWARE RELEASE NOTES FOR TANDBERG VIDEO SWITCH VERSION ID 40003	7
Introduction	7
Changes and Improvements since Previous Version.....	7
<i>API \ XML</i>	7
SOFTWARE RELEASE NOTES FOR TANDBERG VIDEO SWITCH VERSION ID 40002	8
Introduction	8
Changes and Improvements since Previous Version.....	8
<i>Software Version Name</i>	8
<i>Video</i>	8
SOFTWARE RELEASE NOTES FOR TANDBERG VIDEO SWITCH VERSION 1.32.....	9
Introduction	9
Changes and Improvements since Previous Version.....	9
<i>Video</i>	9
SOFTWARE RELEASE NOTES FOR TANDBERG VIDEO SWITCH VERSION 1.31.....	10
Introduction	10
Changes and Improvements since Previous Version.....	10
<i>Video</i>	10
SOFTWARE RELEASE NOTES FOR TANDBERG VIDEO SWITCH VERSION 1.29.....	11
Introduction	11
New Product Abstract.....	11
<i>TANDBERG Video Switch (TVS)</i>	11
Supplemental Notes	13
<i>Software Filenames</i>	13
<i>Getting the Software</i>	13

<i>Installation</i>	13
<i>References</i>	13

Document Revision History

Revision 1.4	Release of ID: 40006, Minor Version
Revision 1.3	Release of ID: 40005, Minor Version
Revision 1.2	Release of ID: 40004, Minor Version
Revision 1.1	Release of ID: 40003, Minor Version
Revision 1.0	Release of ID: 40002, Minor Version
	Release of 1.32, Minor Version
	Release of 1.31, Minor Version
	Release of 1.29, Minor Version

SOFTWARE RELEASE NOTES FOR TANDBERG VIDEO SWITCH VERSION ID 40006

Introduction

These release notes describe the new features and capabilities included in the TANDBERG Video Switch (TVS) software version ID:40006 released on 29th of May 2012.

Note: The TANDBERG Video Switch works with TANDBERG MXP software F6.1 and higher and is only supported with the TANDBERG 6000 MXP and 3000 MXP codec's.

The MXP (F-series) software does not automatically upgrade the TANDBERG Video Switch (TVS) when connected to the TANDBERG High Speed Serial Interface (THSI – Data Port 2); it must manually be upgraded through the upgrade section within the endpoint's web interface. The TVS software is also available on TANDBERG's public ftp [<http://ftp.tandberg.com>] site under the MXP endpoints folder or <http://www.cisco.com> .

The TANDBERG PrecisionHD camera is not automatically upgraded when connected to a TANDBERG Video Switch when software is available through the MXP endpoint. In order to upgrade the PrecisionHD camera, connect it directly to the endpoint.

Changes and Improvements since Previous Version

Video

- Improved reliability when detecting video inputs in the case that the entire system is rebooted (CSCtw83692).

Known Limitations

TANDBERG

<i>Ref. ID</i>	<i>Equipment</i>	<i>Limitations</i>
55333	TANDBERG Video Switch ID 40004 (External Control port)	Currently the following command needs to be entered to enable the external control port on the TVS. Command: cam-cmd 1 8101400301ff and then restart the TVS.

SOFTWARE RELEASE NOTES FOR TANDBERG VIDEO SWITCH VERSION ID 40005

Introduction

These release notes describe the new features and capabilities included in the TANDBERG Video Switch (TVS) software version ID:40005 released on 5th of August 2008.

Note: The TANDBERG Video Switch works with TANDBERG MXP software F6.1 and higher and is only supported with the TANDBERG 6000MXP and 3000MXP codec's.

The MXP (F-series) software does not automatically upgrade the TANDBERG Video Switch (TVS) when connected to the TANDBERG High Speed Serial Interface (THSI – Data Port 2); it must manually be upgraded through the upgrade section within the endpoint's web interface. The TVS software is also available on TANDBERG's public ftp [<http://ftp.tandberg.com>] site under the MXP endpoints folder.

The TANDBERG PrecisionHD camera is not automatically upgraded when connected to a TANDBERG Video Switch when software is available through the MXP endpoint. In order to upgrade the PrecisionHD camera, connect it directly to the endpoint.

Changes and Improvements since Previous Version

Video

- Ported the HDMI driver used for the TANDBERG PrecisionHD 1080p Camera into the TANDBERG Video Switch.
- Fixed an issue causing reverse colors when connecting a RGB QuadView 2+2 to the DVI inputs of the TVS (Ref :#64222).
- Fixed an issue which could cause zebra stripes in a call from video sources connected to the TVS (Ref: #50714).

Known Limitations

TANDBERG

<i>Ref. ID</i>	<i>Equipment</i>	<i>Limitations</i>
55333	TANDBERG TVS ID 40004 (External Control)	Currently the following command needs to be entered to enable the external control port on the TVS. Command: cam-cmd 1 8101400301ff then restart the TVS.

SOFTWARE RELEASE NOTES FOR TANDBERG VIDEO SWITCH VERSION ID 40004

Introduction

These release notes describe the new features and capabilities included in the TANDBERG Video Switch (TVS) software version ID:40004 released on 24 November 2008.

Note: The TANDBERG Video Switch works with TANDBERG MXP software F6.1 and higher and is only supported with the TANDBERG 6000MXP and 3000MXP codec's.

The MXP (F-series) software does not automatically upgrade the TANDBERG Video Switch (TVS) when connected to the TANDBERG High Speed Serial Interface (THSI – Data Port 2); it must manually be upgraded through the upgrade section within the endpoint's web interface. The TVS software is also available on TANDBERG's public ftp [<http://ftp.tandberg.com>] site under the MXP endpoints folder.

The TANDBERG PrecisionHD camera is not automatically upgraded when connected to a TANDBERG Video Switch when software is available through the MXP endpoint. In order to upgrade the PrecisionHD camera, connect it directly to the endpoint.

Changes and Improvements since Previous Version

Usability

- Added support for the TANDBERG PrecisionHD 1080p camera.

Note: The dip switch needs be set to 720p60 on the PrecisionHD 1080p camera when connected to a TANDBERG Video Switch (TVS).

Known Limitations

TANDBERG

<i>Ref. ID</i>	<i>Equipment</i>	<i>Limitations</i>
55333	TANDBERG TVS ID 40004 (External Control)	Currently the following command needs to be entered to enable the external control port on the TVS. Command: cam-cmd 1 8101400301ff then restart the TVS.

SOFTWARE RELEASE NOTES FOR TANDBERG VIDEO SWITCH VERSION ID 40003

Introduction

These release notes describe the new features and capabilities included in the TANDBERG Video Switch (TVS) software version ID:40003 released on 15 August 2008.

Note: The TANDBERG Video Switch works with TANDBERG MXP software F6.1 and higher and is only supported with the TANDBERG 6000MXP and 3000MXP codec's.

The MXP (F-series) software does not automatically upgrade the TANDBERG Video Switch (TVS) when connected to the TANDBERG High Speed Serial Interface (THSI – Data Port 2); it must manually be upgraded through the upgrade section within the endpoint's web interface. The TVS software is also available on TANDBERG's public ftp [\[http://ftp.tandberg.com\]](http://ftp.tandberg.com) site under the MXP endpoints folder.

The TANDBERG PrecisionHD camera is not automatically upgraded when connected to a TANDBERG Video Switch when software is available through the MXP endpoint. In order to upgrade the PrecisionHD camera, connect it directly to the endpoint.

Changes and Improvements since Previous Version

API \ XML

- Removed some debugging printouts that were not necessary for the TVS.

SOFTWARE RELEASE NOTES FOR TANDBERG VIDEO SWITCH VERSION ID 40002

Introduction

These release notes describe the new features and capabilities included in the TANDBERG Video Switch (TVS) software version ID:40002 released on 7 March 2008.

Note: The TANDBERG Video Switch works with TANDBERG MXP software F6.1 and higher and is only supported with the TANDBERG 6000MXP and 3000MXP codec's.

The MXP (F-series) software does not automatically upgrade the TANDBERG Video Switch (TVS) when connected to the TANDBERG High Speed Serial Interface (THSI – Data Port 2); it must manually be upgraded through the upgrade section within the endpoint's web interface. The TVS software is also available on TANDBERG's public ftp [<http://ftp.tandberg.com>] site under the MXP endpoints folder.

The TANDBERG PrecisionHD camera is not automatically upgraded when connected to a TANDBERG Video Switch when software is available through the MXP endpoint. In order to upgrade the PrecisionHD camera, connect it directly to the endpoint.

Changes and Improvements since Previous Version

Software Version Name

- Renamed the typographical error of the software text name from 1.32beta1 to S51200.Final [ID:40002]. This will now be the new software version format for the TVS, which is similar to the TANDBERG PrecisionHD camera software version format. When new software version becomes available the ID: in brackets [ID:40002] will increase.

Video

- Reduced video noise displayed in the analog inputs (Component).

SOFTWARE RELEASE NOTES FOR TANDBERG VIDEO SWITCH VERSION 1.32

Introduction

These release notes describe the new features and capabilities included in the TANDBERG Video Switch (TVS) software version 1.32 released on 21 November 2007.

Note: The TANDBERG Video Switch works with TANDBERG MXP software F6.1 and higher and is only supported with the TANDBERG 6000MXP and 3000MXP codec's.

The MXP (F-series) software does not automatically upgrade the TANDBERG Video Switch (TVS) when connected to the TANDBERG High Speed Serial Interface (THSI – Data Port 2); it must manually be upgraded through the upgrade section within the endpoint's web interface. The TVS software is also available on TANDBERG's public ftp [<http://ftp.tandberg.com>] site under the MXP endpoints folder.

The TANDBERG PrecisionHD camera is not automatically upgraded when connected to a TANDBERG Video Switch when software is available through the MXP endpoint. In order to upgrade the PrecisionHD camera, connect it directly to the endpoint.

Changes and Improvements since Previous Version

Video

- Reduced video noise displayed in the analog inputs (Component).

SOFTWARE RELEASE NOTES FOR TANDBERG VIDEO SWITCH VERSION 1.31

Introduction

These release notes describe the new features and capabilities included in the TANDBERG Video Switch (TVS) software version 1.31 released on 17 September 2007.

Note: The TANDBERG Video Switch works with TANDBERG MXP software F6.1 and higher and is only supported with the TANDBERG 6000MXP and 3000MXP codec's.

The MXP (F-series) software does not automatically upgrade the TANDBERG Video Switch (TVS) when connected to the TANDBERG High Speed Serial Interface (THSI – Data Port 2); it must manually upgraded through the upgrade section within the endpoint's web interface. The TVS software is also available on TANDBERG's public ftp [<http://ftp.tandberg.com>] site under the MXP endpoints folder.

The TANDBERG PrecisionHD camera is not automatically upgraded when connected to a TANDBERG Video Switch when software is available through the MXP endpoint. In order to upgrade the PrecisionHD camera, connect it directly to the endpoint.

Changes and Improvements since Previous Version

Video

- Improved w720p HD quality in TVS software Ver "S51200-1.31 [ID:40001].
- Improved the format detection to be more flexible in supporting 59.94.
- Improved adaptive sideways picture positioning.
- Improved tolerance for unstable video signals.

SOFTWARE RELEASE NOTES FOR TANDBERG VIDEO SWITCH VERSION 1.29

Introduction

These release notes describe the new features and capabilities included in the TANDBERG Video Switch (TVS) software released on 9 August 2007.

New Product Abstract

The TANDBERG Video Switch (TVS) is new addition to the TANDBERG product line. The TVS is a rack-mountable hardware option for TANDBERG 6000MXP and 3000MXP codec's that delivers the ability to daisy chain multiple HD cameras and provides support for third party HD cameras through the addition of connectors that are not present on the stand alone 6000 MXP and 3000 MXP endpoints.

TANDBERG Video Switch (TVS)

The TANDBERG Video Switch adds the ability to connect up to 6 HD cameras, 4 TANDBERG PrecisionHD cameras and 2 third party HD cameras, like the Sony EVI-HD1, to the 6000MXP or 3000MXP endpoints. The TVS also allows the connection of up to 3 SD cameras like the TANDBERG WAVE II or Sony EVI-D type cameras. The TVS can work in conjunction with the 6000MXP or 3000MXP for multiple HD cameras, but can also be a standalone video switcher by utilizing the HDMI output to a HD monitor.



Figure 1: Front of the TVS



Figure 2: Back of the TVS

- LED Power Indication
- 1 x TANDBERG High Speed Interface (THSI)
- 1 x HDMI Video Output
- 4 x DVI-D Video inputs
- 2 x Component Video inputs
- 3 x Data Ports
- 19" Rack Mountable
- 12 Volt Power Supply

The TVS has its own software image which is S51200-1.29 [ID:40001] and is manually upgraded through the MXP endpoints web interface under > System Configuration > Upgrade. The PrecisionHD camera can also be upgraded manually through the web interface if software is made available and separate from the codec software. Other than this, the PrecisionHD camera software is included in the codec software and automatically upgrades the PrecisionHD camera.

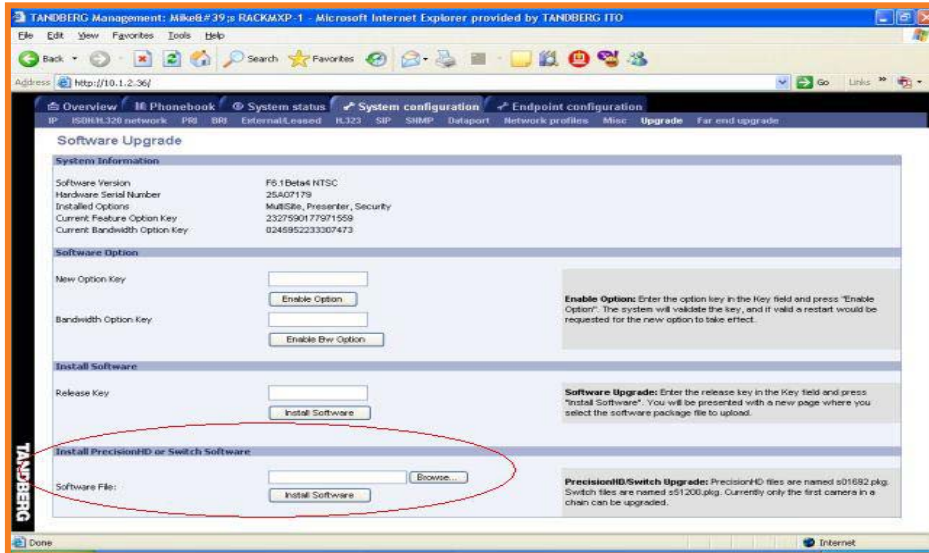


Figure 3: PHD & TVS Software Upgrade

Availability: Available on the 6000 MXP and 3000 MXP based endpoints.

Restrictions: Requires F6.1 or later software.

Not available on the Edge 75, 85 and 95 MXP endpoints.

TANDBERG PrecisionHD camera is not upgraded while connected to the TVS. The PrecisionHD camera needs to be connected directly to the codec for the software update.

Supplemental Notes

Software Filenames

All TANDBERG Video Switch's use the same software files. The correct software filenames are listed in the following table.

TANDBERG Video Switch	
Software	Serial Number Range
s51200_ID4000x.pkg	All

Getting the Software

Customers should contact their TANDBERG maintenance provider for support and assistance with their TANDBERG products, and software files.

Installation

Installation of TANDBERG Video Switch (TVS) software can be accomplished through the local Web Interface (HTTP) of the MXP codec connected to the Video switch.

References

User documentation for TANDBERG Video Switch on Cisco web site:

http://www.cisco.com/en/US/products/ps11393/tsd_products_support_series_home.html

Software updates for TANDBERG Video Switch on Cisco web site:

<http://www.cisco.com/cisco/software/navigator.html?mdfid=283645272&i=rm>

For all documentation, please see the Cisco web site at: <http://www.cisco.com/go/telepresence/docs>