

Cisco Room Vision PTZ PresenterTrack

The new PresenterTrack experience developed for Room Vision PTZ delivers high quality production for the bigger stage. It uses built in AI and moveable pan, tilt and optical zoom for great image quality.

Zoom range:

12x optical zoom

2x digital zoom

Supported collaboration devices:

Cisco Codec EQ: HDMI or Video over IP

Cisco Codec Pro: HDMI *

Coming soon

Cisco Room Bar Pro: HDMI or Video over IP *

Cisco Board Pro G2: HDMI or Video over IP *

Cisco Board Pro G1: HDMI *

* Requires additional PoE+ switch or PoE+ injector

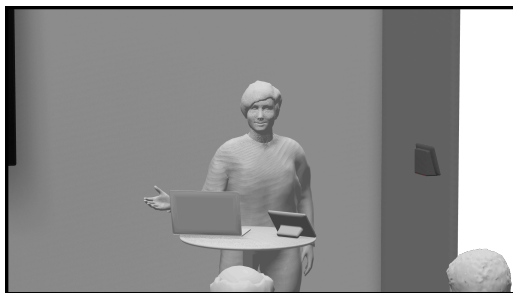
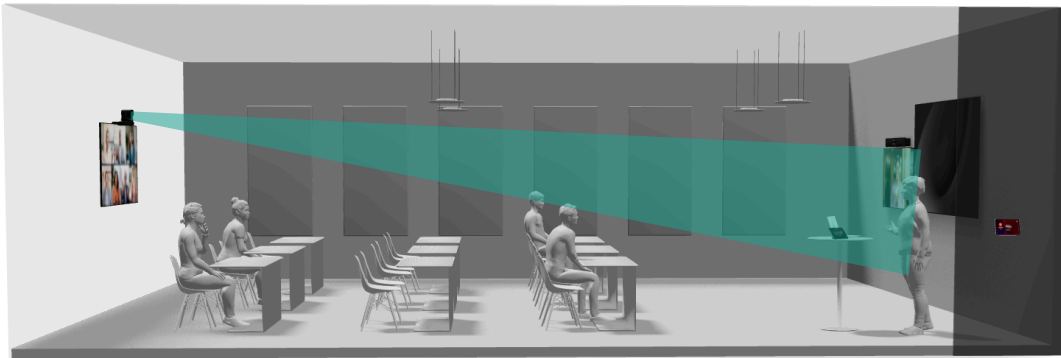
Required Peripherals

Cisco Room Navigator

Cisco Room Vision PTZ

Room considerations

Ensure mounting the camera high enough to have a clear line of sight towards the stage. Example below.



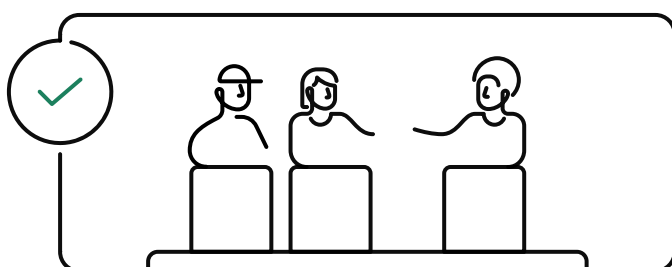
Software setup

From the navigator navigate to Device settings > Camera > Room Vision PTZ PresenterTrack setup. Follow the instructions.

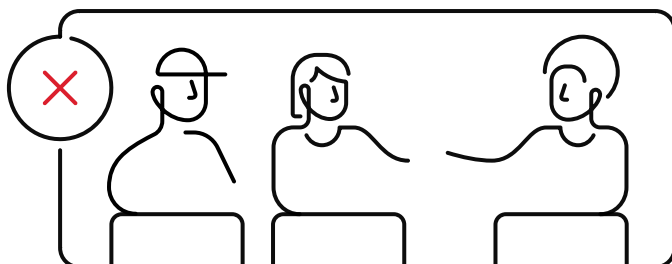
Software setup considerations

Camera default view

In the software setup you will be asked to set a camera default view. This view will be used when the stage is empty. Here are some things to consider for the camera default view:



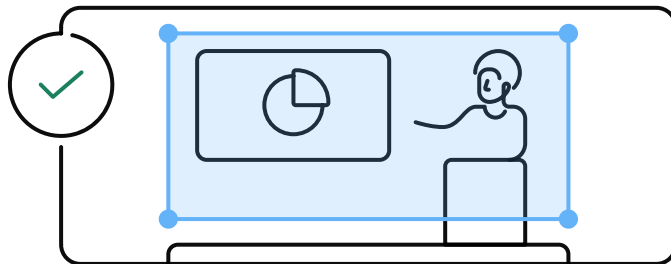
Make sure the camera captures the stage area it is intended for.



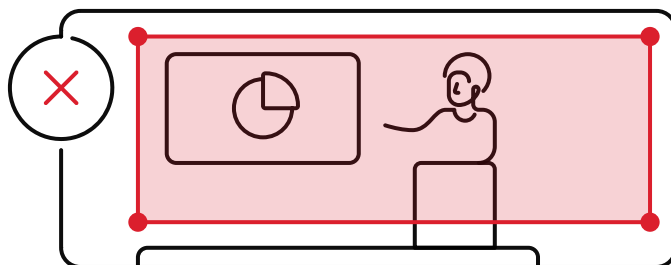
Too close, might be hard to allow presenters to move freely on the stage.

Stage zone

In the software setup you will then be asked to set the stage zone. The camera follows people within the stage zone.



Ensure the presenters heads will be within the stage zone when they are standing, or if relevant sitting.



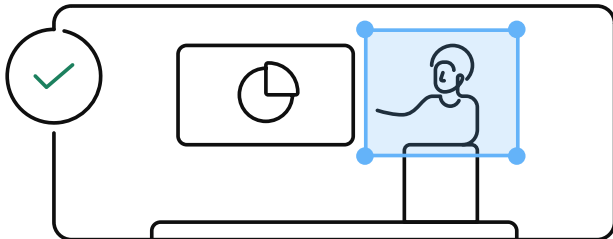
Avoid making the stage zone too wide to stop tracking people when they leave the stage.

Stage zones larger than camera view

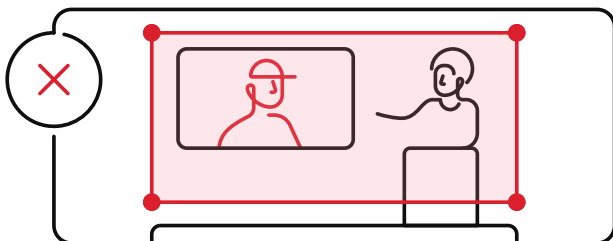
A stage zone larger than the default camera view is supported. In order to create this you need to set a stage zone, then navigate back to change the camera view and then extend the zone previously created.

Trigger zone

The trigger zone defines the area people's heads need to enter in order to be tracked.



Ensure the trigger zone covers the relevant part of the stage.



Avoid overlapping with content screens as the camera might detect people in the presentations.

More considerations

When marking the trigger zone in the setup wizard, ensure the audience can move freely around without accidentally triggering PresenterTrack.

If no trigger zone is defined the stage zone will also work as trigger zone.

Default camera view and trigger zones

Ensure the trigger zone is within the default camera view. When the stage zone is empty, the camera will only detect people within the default camera view.

Software experience

From the call menu or the control panel you can open the camera controls and enable PresenterTrack from the list of camera modes. When in use be mindful that it has two states which handle tracking of new people slightly differently than previous generation PresenterTrack.

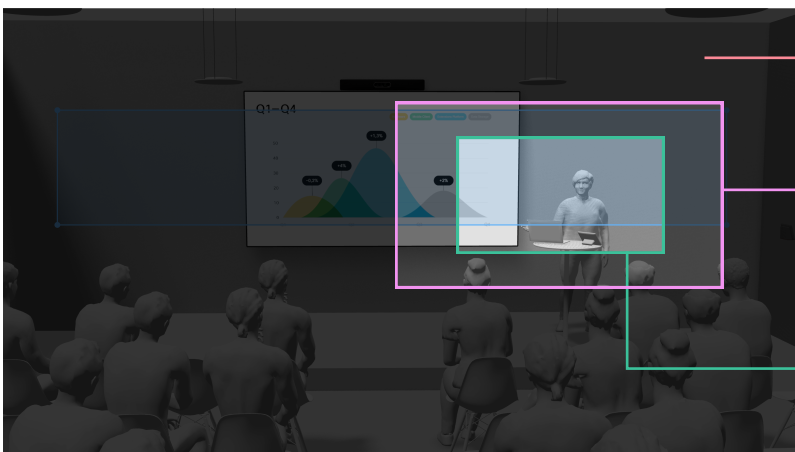
Empty stage

The camera can see the whole stage area and see people immediately as they enter the stage highlighted in blue.



People on stage

When the camera is tracking it will not be able to see the whole stage area anymore. This means the camera will only start tracking people in the stage zone close to the presenter. In the image below the darkest area represents the area the camera can't see. The lighter dark overlay and the area without overlay represents what the camera can see, and the fully transparent area is what the camera broadcasts.



Camera can't detect heads here.

Camera can detect heads within this area

Broadcasted video.