



Configuring Cisco Video Service

Release 5.1

Configuring Cisco Video Service

To use Cisco/VSMS video cameras with PSOM, you must:

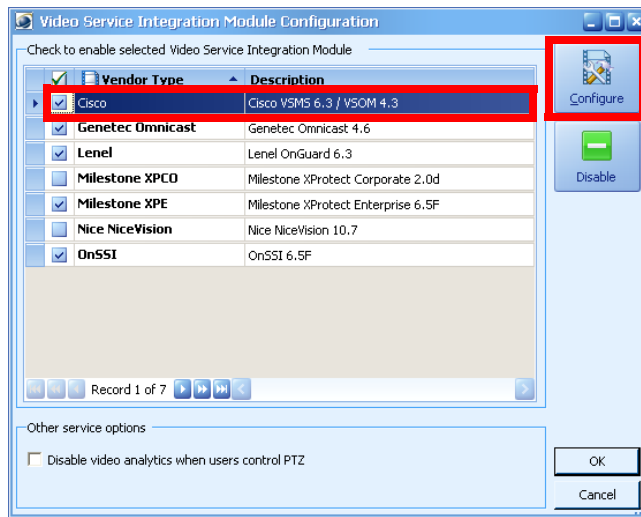
- Install the Cisco Video Surveillance Integrated Services Platform (**axc_setup.exe**) on every PSOM Administration or Operation Console machine that you will use to access Cisco video.
- From a web browser, navigate to the IP address of the Cisco VSOM Server and install additional client components. For example, **http://ip_address/vsom/**.
- Install the Cisco Video Service on the PSOM Administration Console machine by running the correct executable for your Cisco installation version in the **VideoAdaptorInstallers** directory of your PSOM installation media:
 - Cisco 6.0—**PxVideoAdaptorSetup-Cisco6.0.msi**
 - Cisco 6.1—**PxVideoAdaptorSetup-Cisco6.1.msi**
 - Cisco 6.2—**PxVideoAdaptorSetup-Cisco6.2.msi**
 - Cisco 6.3—**PxVideoAdaptorSetup-Cisco6.3.msi**

To configure Cisco video service:

-
- Step 1** Select **Cisco** from the Video Service Integration Module Configuration window.

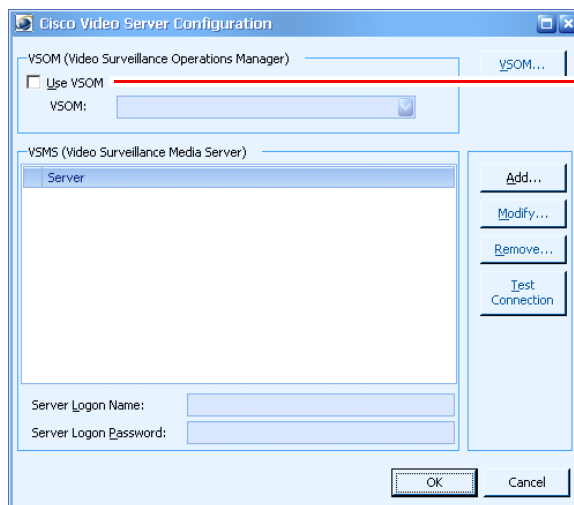


Americas Headquarters:
Cisco Systems, Inc., 170 West Tasman Drive, San Jose, CA 95134-1706 USA



Step 2 Click the **Configure** button.

The Cisco Video Server Configuration window appears.

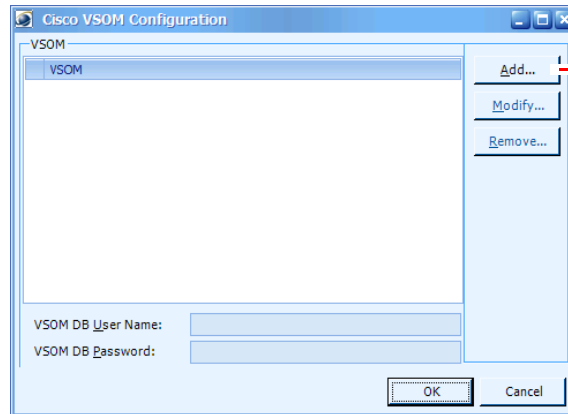


To use Cisco Video Surveillance Operations Manager, check the Use VSOM option and click the VSOM... button.

Step 3 (Optional) If you want to use the Cisco Video Surveillance Operations Manager (VSOM), follow these steps:

- a. Check the **Use VSOM** option and click the **VSOM...** button.

The Cisco VSOM Configuration window appears.

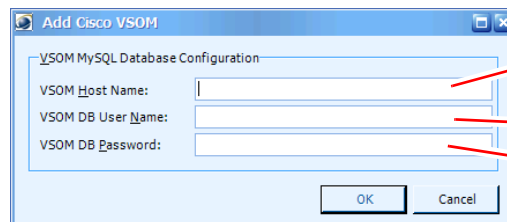


- b. Click the **Add...** button.

The Add Cisco VSOM window appears.

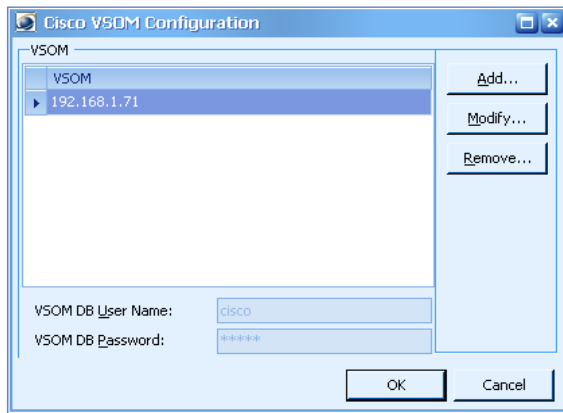


Note Make sure that the Cisco MySQL database has a user with full privileges that can be specified for this Cisco VSOM entry.



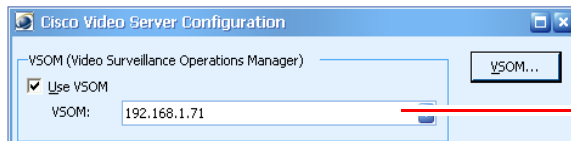
- c. In the **VSOM Host Name** field, enter the Cisco/VSOM server name or TCP/IP address.
- d. In the **VSOM DB User Name** field, enter the user name for accessing this Cisco/VSOM server.
- e. In the **VSOM DB Password** field, enter the password for the user name.
- f. Click **OK**.

The Cisco VSOM Configuration window shows your new server configuration.



g. Click **OK**.

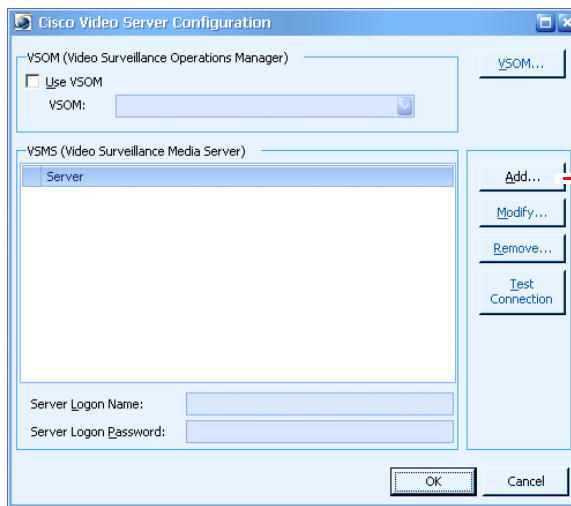
The Cisco Video Server Configuration window appears.



Select the VSOM you want to use.

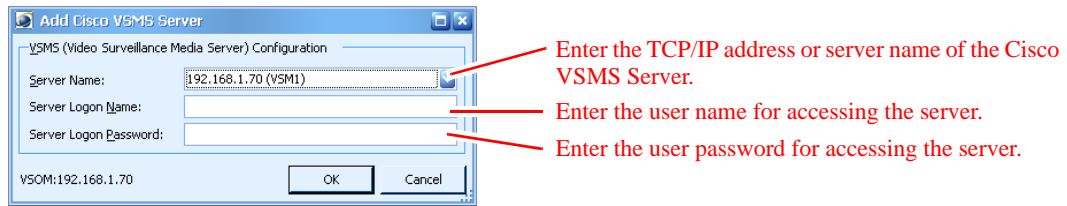
h. Select the VSOM you want to use from the **VSOM** pull-down menu.

Step 4 To specify a Cisco Video Surveillance Media Server, click the **Add...** button.

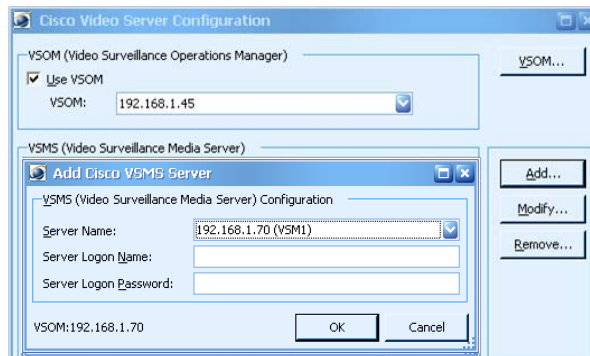


To specify a Cisco Video Surveillance Media Server, click the **Add...** button.

The Add Cisco VSMS Server window appears.



Step 5 In the **Server Name** field, enter the Cisco VSMS Server name or TCP/IP address. If you are using a VSOM, you will select the server from a drop-down list.

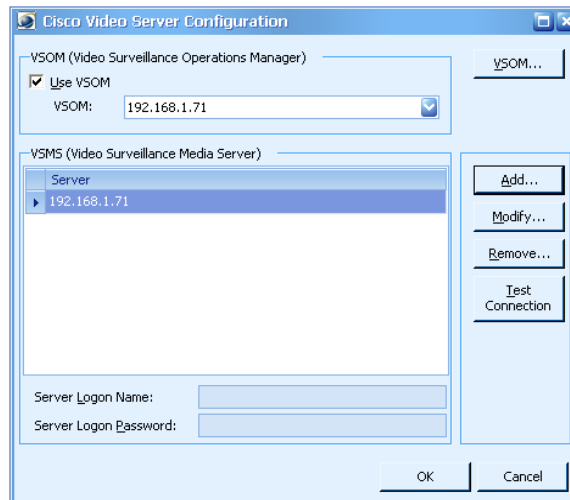


Step 6 In the **Server Logon Name** field, enter the user name for accessing this Cisco VSMS Server.

Step 7 In the **Server Logon Password** field, enter the password associated with the user name.

Step 8 Click **OK**.

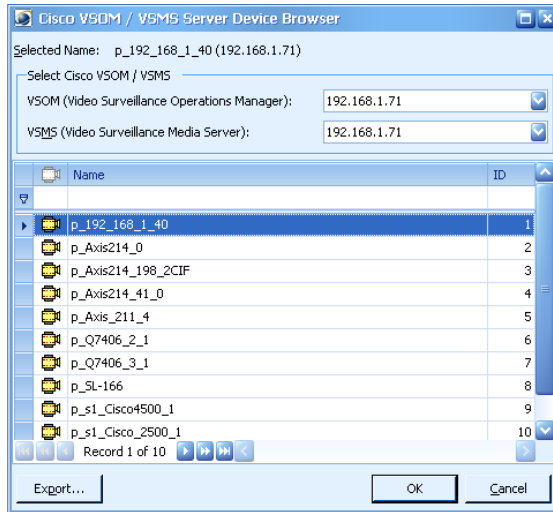
The Cisco Video Server Configuration window shows your new server configuration.



Step 9 Click **Test Connection** to verify connectivity with the Cisco VSMS Server.

Step 10 When you are finished, restart the PSOM Administration Console to enable the new Cisco Video Service configuration.

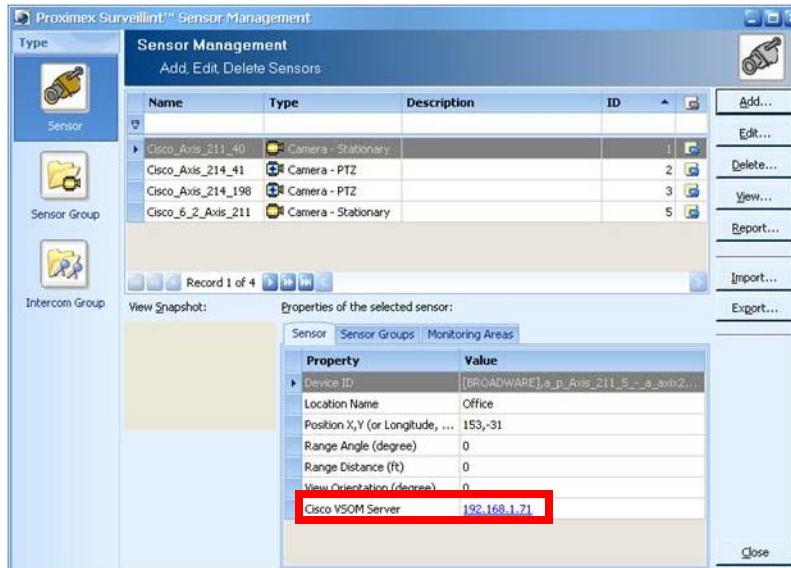
Step 11 Next, add sensors to PSOM for the Cisco cameras following the instructions in the “Adding New Sensors for Video Cameras” section in the *Administering PSOM* guide. You should be able to browse Cisco cameras using the Cisco VSOM/VSMS Server Device Browser window as shown next.



If a VSOM is employed, select it from the **VSOM** pull-down menu. Then select the relevant VSMS from the **VSMS** pull-down menu and a list of associated cameras appears.

You can export the Cisco camera list for the selected VSMS in an XML file by clicking the **Export** button at the bottom of the window.

Step 12 When a new sensor is created from a camera using the VSOM option, the sensor properties will show the name of the associated VSOM Server.



When you are adding sensors for Cisco to PSOM, or playing live or recorded video, you can check for error messages in the PxSurveillantTrace.LOG file. This file is usually stored in C:\Users*CurrentWinNTUser*\Local Settings\Application Data\Cisco Systems, Inc\Physical Security Operations Manager 5.1.

Search for error messages beginning with “Error [PxVideoAdaptorBroadWare]”.

PTZ Control of Cisco Cameras

When viewing live video for a Cisco PTZ camera, you can move the camera:

- **Pan**—Right-click and hold anywhere in the Live Video window to change the view shown by the PTZ camera. Release the right-click to stop camera movement.
- **Zoom**—Press the mouse wheel and hold anywhere in the Live Video window to activate zoom on the PTZ camera. Once activated, zoom out by moving the wheel clockwise, zoom in by moving the wheel in reverse direction.

Cisco and the Cisco Logo are trademarks of Cisco Systems, Inc. and/or its affiliates in the U.S. and other countries. A listing of Cisco's trademarks can be found at www.cisco.com/go/trademarks. Third party trademarks mentioned are the property of their respective owners. The use of the word partner does not imply a partnership relationship between Cisco and any other company. (1005R)

© 2011 Cisco Systems, Inc. All rights reserved.

