

Cisco Telemetry Broker M6 TB2300 Firmware Version 4.3(2.240009) Update Patch

This document provides a description of the Cisco Telemetry Broker 4.3(2.240009) Firmware M6 Update Patch, along with instructions for installing the patch. The patch file (m6-tb2300-ctb-firmware-4.3-2.240009.iso) updates your firmware to version 4.3(2.240009) for M6 hardware for Cisco Telemetry Broker.


Download and Installation

Download


To download the update patch file, complete the following steps:

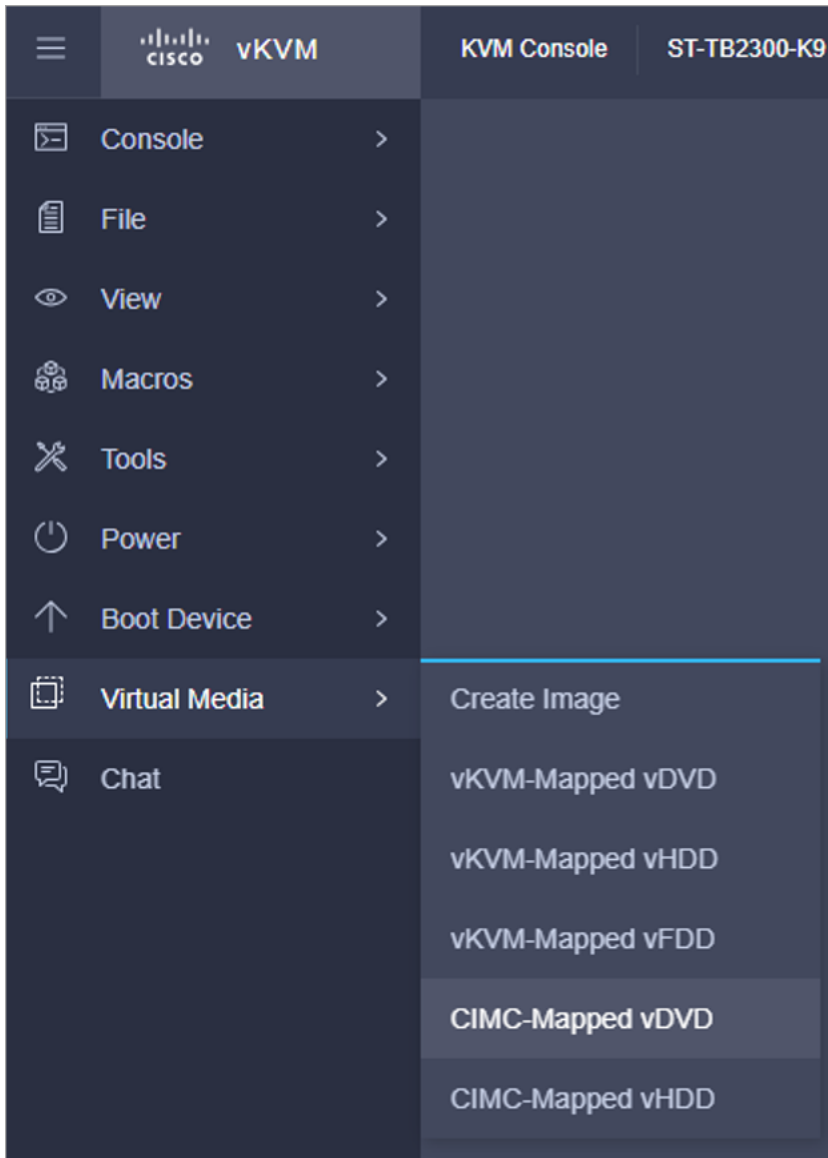
1. Log in to Cisco Software Central, <https://software.cisco.com>.
2. In the Download and Upgrade area, choose **Access downloads**.
3. Type **Cisco Telemetry Broker** in the **Select a Product** search box.
4. Click **Broker Node Software**.
5. From the left menu, choose **Latest Release > Firmware**.
6. Download and save the file, m6-tb2300-ctb-firmware-4.3-2.240009.iso.

Installation

 To install the firmware patch from an ISO image, use the vKVM console of an M6 machine.

1. Log in to the unit's Cisco Integrated Management Controller (CIMC) interface using a web browser.
2. From the list of options in the upper right area of the screen, click **Launch vKVM**.
3. From the vKVM console, choose **Virtual Media > CIMC-Mapped vDVD** from the list of menu items located on the left side of the window.

 If you have used this option before, you'll see the name you previously specified. Click this name and confirm you want to remove it.



4. In the Map Virtual Media - CD/DVD dialog, complete the following steps:
 - a. In the **Name** field, type the title name you want to use (for example, FW Patch April 17).
 - b. In the **File Location** field, provide the location of the patch file using the preferred method (NFS, CIFS, or HTTP/S).
 - c. Complete the **Username** and **Password** fields if applicable.
 - d. Click **Map Drive**.

Map Virtual Media - CD/DVD

Name

NFS CIFS **HTTP/S**

File Location * _____ ⓘ

Username _____

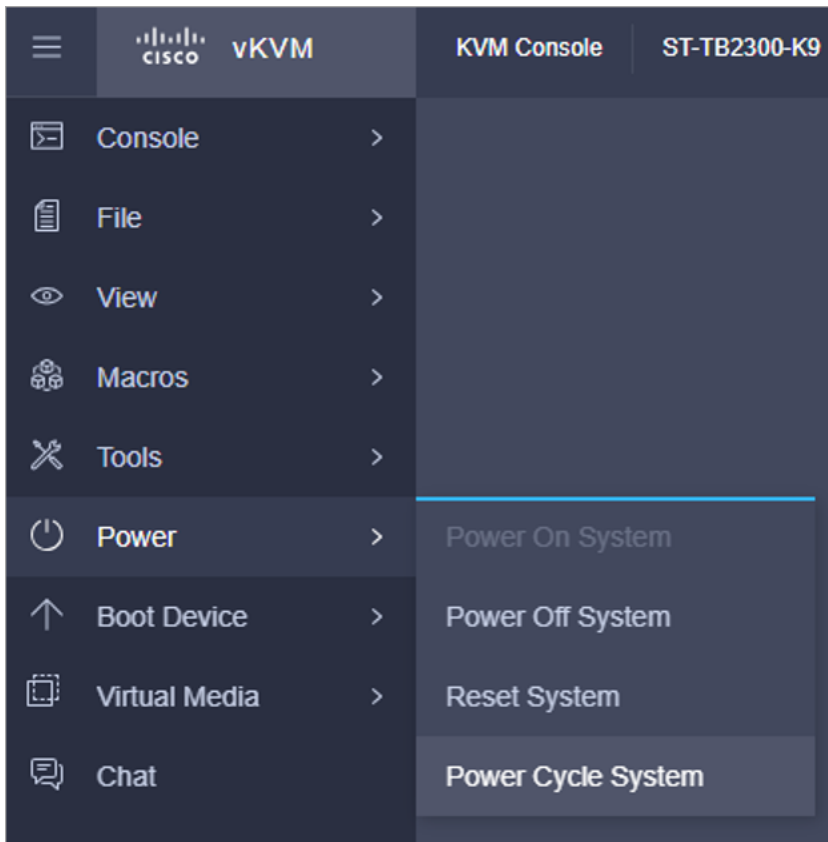
Password _____ ⓘ

Auto-remap ⓘ

Stored vMedia ⇨ **Save**

Cancel Clear **Map Drive**

5. Choose **Power > Power Cycle System** and complete the following steps:



- a. In the dialog that opens, click **Confirm**.
- b. Monitor the various green "No Signal" screens. For example:
 - *Reason: Host power is off.*
 - *Reason: Host is powered but not outputting video.*
- c. Monitor the various Cisco boot messages. See the following image for examples.

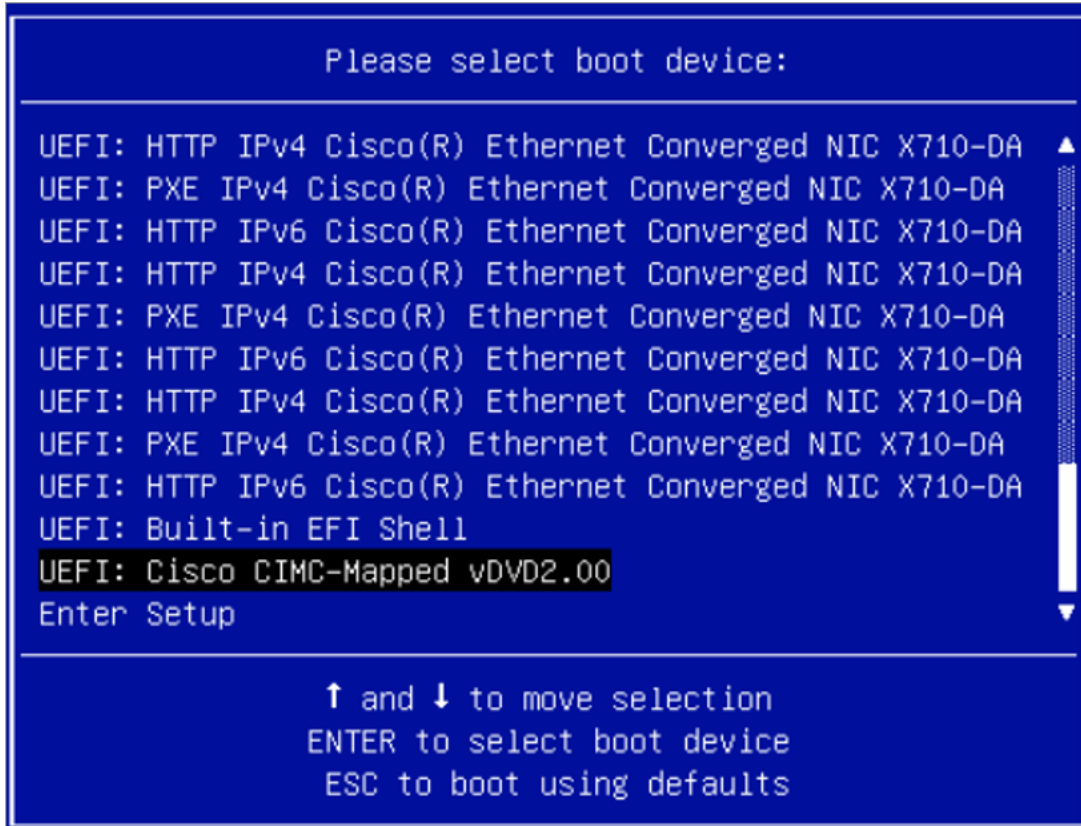
```
Cisco Systems, Inc.  
Configuring and testing memory..  
Configuring platform hardware...
```

6. In the console, when prompted to press function keys, press **F6** for the Boot Menu.

The message "Entering Boot Menu" appears.



7. When prompted to select the boot device, use the arrow keys to highlight the entry name **UEFI: Cisco CIMC-Mapped vDVD2.00** (usually located at the bottom of the screen), then press **Enter**.



The upgrade process should take approximately 40 minutes (depending on how long it takes to load the .iso file) and doesn't require user intervention. However, to determine when this process has finished, you do need to start a new vKVM console session.

The process has completed when the familiar CTB login prompt (<hostname>) is displayed. You can then verify that the firmware upgrade was successful by confirming this in the CIMC Chassis/Summary.

- **Firmware Version:** 4.3(2.240009)
- **BIOS Version:** C225M6.4.3.2c0_SNA1UV3M6

You can double-check this on the Firmware Management screen by completing the following steps:

1. Click the following icon, located in the upper left corner of the CIMC screen:



2. Choose **Admin > Firmware Management**.

Contacting Support

If you need technical support, please do one of the following:

- Contact your local Cisco Partner
- Contact Cisco Support
 - To open a case by web:
<http://www.cisco.com/c/en/us/support/index.html>
 - To open a case by email: tac@cisco.com
 - For phone support: 1-800-553-2447 (U.S.)
 - For worldwide support numbers:
www.cisco.com/en/US/partner/support/tsd_cisco_worldwide_contacts.html