



Quick Start Guide



Cisco Small Business Model RVS4000 4-Port Gigabit Security Router with VPN

Package Contents

- RVS4000 Router
- Network Cable
- Power Adapter
- Stands
- Quick Start Guide
- Software and Documentation on CD-ROM

1 Product Overview

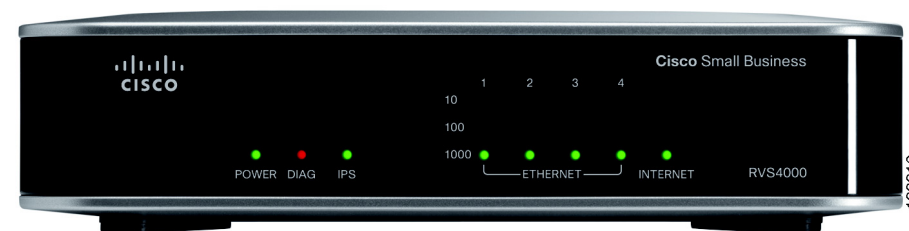
Thank you for choosing the Cisco RVS4000 4-Port Gigabit Security Router with VPN. The RVS4000 Router is an advanced Internet-sharing network solution for your small business needs. Like any router, it lets multiple computers in your office share an Internet connection.

This router also features a built-in 4-port full-duplex 10/100/1000 Ethernet switch to connect four PCs directly, or you can connect more hubs and switches to create as big a network as you need.

The Virtual Private Network (VPN) capability creates encrypted “tunnels” through the Internet, allowing users to securely connect into your office network from offsite.

Front Panel

The LEDs are on the front panel of the router.



POWER LED—Lights up green to indicate the router is powered on. The LED flashes when the router is running a diagnostic test.

DIAG LED—If this light is off, the system is ready. The Diag LED blinks red during firmware upgrades.

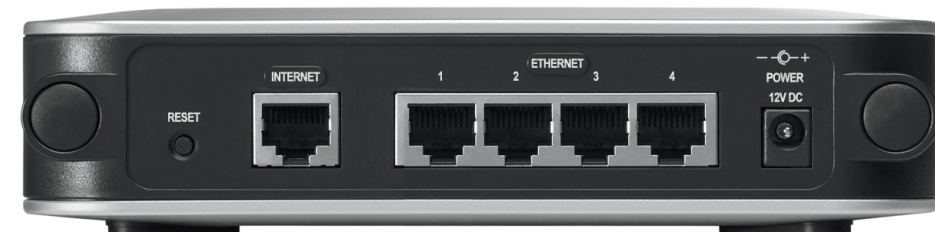
IPS LED—The IPS LED lights up when the Intrusion Prevention System (IPS) function is enabled. If the LED is off, then IPS functions are disabled. The IPS LED flashes green when an external attack is detected. It flashes red when an internal attack is detected.

ETHERNET Port LEDs (1-4)—For each LAN port, there are three LEDs. If a port LED is continuously lit green, the router is connected to a device at the speed indicated through the corresponding port (1, 2, 3, or 4). The LED flashes green when a router is actively sending or receiving data on that port.

INTERNET LED—The Internet LED lights up green to indicate the line speed of the device attached to the Internet port. If the router is connected to a cable or DSL modem, typically the 100 LED will be the only LED lit up, indicating 100 Mbps. Flashing indicates activity.

Back Panel

The Ethernet ports, Internet port, Reset button, and Power port are on the back panel of the router.



RESET Button—The Reset button can be used in two ways:

- If the router is having problems connecting to the Internet, press the Reset button for just a second with a paper clip or a pencil tip. This is similar to pressing the reset button on your PC to reboot it.
- If you are experiencing extreme problems with the router and have tried all other troubleshooting measures, press and hold in the Reset button for 10 seconds. This will restore the factory defaults and clear all of the router settings, such as port forwarding or a new password.

INTERNET Port—Provides a WAN connection to a cable modem or DSL modem.

ETHERNET Ports (1-4)—Provide a LAN connection to network devices, such as PCs, print servers, or additional switches.

POWER Port—Connects the router to power via the supplied AC power adapter.

Placement Options

You can place the router horizontally on the rubber feet, mount it in the stand, or mount it on the wall.

Desktop Option

For desktop placement, place the Cisco RVS4000 router horizontally on a surface so it sits on its four rubber feet.

Stand Option

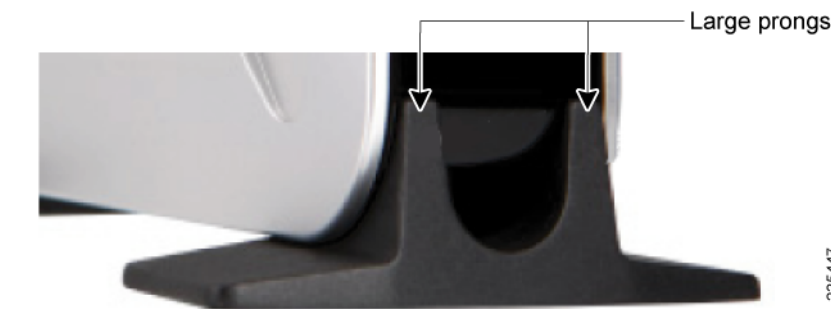
To install the router vertically in the supplied stands, follow the steps below.



To place the router vertically, follow these steps.

STEP 1 Locate the left side panel of the router.

STEP 2 With the two large prongs of one of the stands facing outward, insert the short prongs into the little slots in the router and push the stand upward until the stand snaps into place.



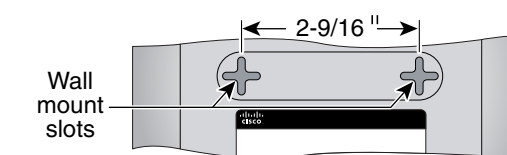
STEP 3 Repeat step 2 with the other stand.

Wall Option

To mount the Cisco RVS4000 router on the wall, follow these steps.

STEP 1 Determine where you want to mount the router and install two screws (not supplied) that are 2-9/16 in. apart (approximately 64.5 mm).

STEP 2 With the back panel pointing up (if installing vertically), line up the router so that the wall-mount crisscross slots on the bottom of the access point line up with the two screws.



STEP 3 Place the wall-mount slots over the screws and slide the router down until the screws fit snugly into the wall-mount slots.

2 Before You Begin

To prepare the router for installation do the following:

- Obtain the setup information for your specific type of Internet connection from your Internet Service Provider (ISP).
- Power off all of your network hardware, including the router, PCs, and cable modem or DSL modem.

Americas Headquarters
Cisco Systems, Inc.
170 West Tasman Drive
San Jose, CA 95134-1706
USA
<http://www.cisco.com>
Tel: 408 526-4000
800 553-NETS (6387)
Fax: 408 527-0883



Cisco, Cisco Systems, the Cisco logo, and the Cisco Systems logo are registered trademarks or trademarks of Cisco Systems, Inc. and/or its affiliates in the United States and certain other countries. All other trademarks mentioned in this document or Website are the property of their respective owners. The use of the word partner does not imply a partnership relationship between Cisco and any other company. (0705R)

© 2009 Cisco Systems, Inc. All rights reserved.

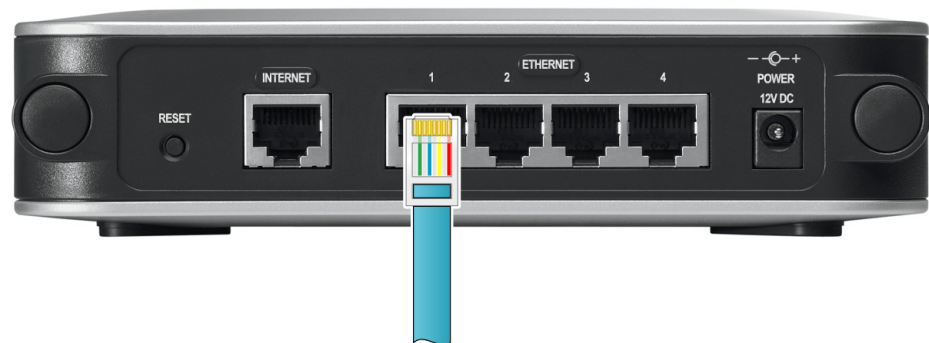
♻️ Printed in the USA on recycled paper containing 10% postconsumer waste.

78-18969-01

3 Installation

Perform the steps in this section to install the hardware.

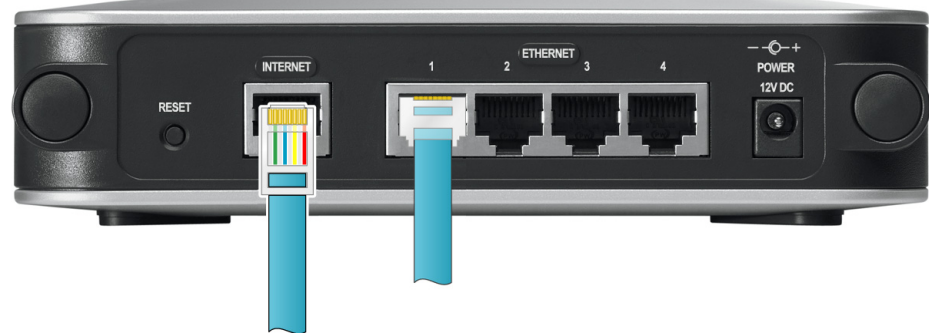
- STEP 1** Connect one end of an Ethernet network cable to one of the LAN ports (labeled 1-4) on the back of the router. Connect the other end to an Ethernet port on a PC.



23-4011

- STEP 2** Repeat step 1 to connect up to four PCs, switches, or other network devices to the router.

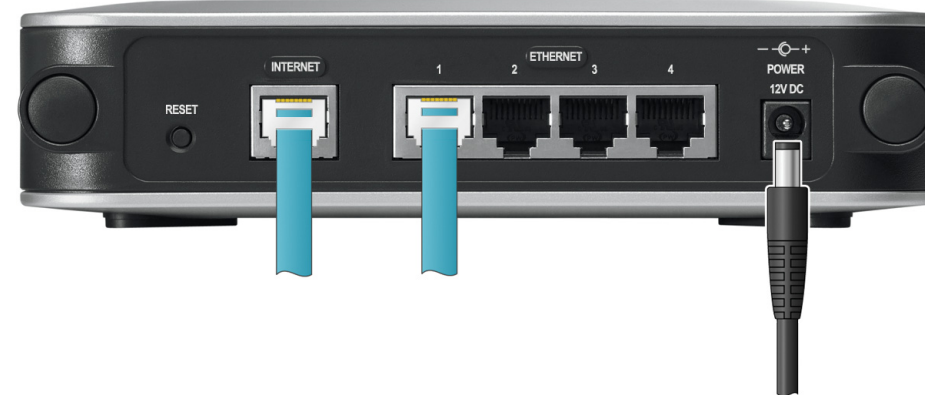
- STEP 3** Connect an Ethernet network cable from your cable modem or DSL modem to the Internet port on the back panel of the router.



23-4012

- STEP 4** Power on the cable or DSL modem.

- STEP 5** Connect the power adapter to the router's Power port and plug the other end into an electrical outlet.



23-4013

- STEP 6** The Power and Internet LEDs on the front panel will light up green as soon as the power adapter is connected.

- STEP 7** Power on the PCs.

The router hardware installation is now complete.

4 Configure the Router

To configure the RVS4000, plug a PC into the router and launch the web-based configuration utility as follows.



- NOTE** Before setting up the router, make sure your PCs are configured to obtain an IP (or TCP/IP) address automatically from the router.

- STEP 1** Launch a web browser, such as Internet Explorer or Mozilla Firefox.

- STEP 2** In the Address field enter **http://192.168.1.1** and press **Enter**.

- STEP 3** In the User Name and Password fields, enter **admin**.

The default user name and password is **admin**.

- STEP 4** Click **OK**.

For added security, you should later set a new password using the Administration > Management window of the web-based utility.

- STEP 5** The web-based utility will appear with the Setup menu and Summary selected. Click **WAN** under the Setup menu.

- STEP 6** If requested by your ISP (usually cable ISPs), complete the Host Name and Domain Name fields, and the MTU and MTU Size fields. Otherwise, leave the defaults.

- STEP 7** In the WAN screen, choose an Internet Connection Type from the drop-down menu. Depending on which Internet connection type you select, additional setup may be required.

The Internet Connection Types are:

Automatic Configuration - DHCP: If you are connecting through DHCP or a dynamic IP address from your ISP, keep this default setting.

Static IP: If your ISP assigns you a static IP address, select Static IP from the drop-down menu. Complete the Internet IP Address, Subnet Mask, Default Gateway, and DNS fields. Enter at least one DNS address.

PPPoE: If you are connecting through PPPoE, select PPPoE from the drop-down menu. Complete the User Name and Password fields.

PPTP: PPTP is a service used in Europe only. If you are using a PPTP connection, check with your ISP for the necessary setup information.

Heartbeat Signal: Heartbeat Signal is used primarily in Australia. Check with your ISP for the necessary setup information.

L2TP: L2TP is used mostly in Europe. Check with your ISP for the necessary setup information.

- STEP 8** When you are finished entering your Internet connection settings, click **Save**.

- STEP 9** Restart or power on your PC to obtain the new router setting.

- STEP 10** Test the setup by opening your web browser from any computer and entering <http://www.cisco.com/smb>.

Congratulations! The installation of the router is complete.



NOTE

For more information about advanced settings and security options, refer to the *Cisco RVS4000 4-Port Gigabit Security Router with VPN Administration Guide* on your CD-ROM. You can also access this guide and other related documentation on Cisco.com, as indicated in the next section.

5 Where to Go from Here

Resource	Location
Technical Documentation	http://www.cisco.com/en/US/products/ps9923/tsd_products_support_series_home.html
Customer Support	www.cisco.com/en/US/support/tsd_cisco_small_business_support_center_contacts.html
Open Source License Notices	www.cisco.com/go/osln
Regulatory Compliance and Safety Information	www.cisco.com/en/US/products/ps9923/tsd_products_support_series_home.html
Warranty Information	www.cisco.com/go/warranty
Cisco Partner Central site for Small Business	www.cisco.com/web/partners/sell/smb