

4-Port Gigabit Security Router with VPN

Package Contents

- User Guide on CD-ROM
- Network Cable
- Power Adapter
- Stands
- Registration Card
- Quick Install Guide



QUICK INSTALLATION

BUSINESS SERIES



1

Connect the Router

A Before you begin, make sure that you have the setup information for your specific type of Internet connection. The installation technician from your ISP should have left this information with you after installing your broadband connection. If not, you can call your ISP to request the settings.

B Make sure that all of your network's hardware is powered off, including the Router, PCs, and cable or DSL modem.

C Connect one end of an Ethernet network cable to one of the LAN ports (labeled 1-4) on the back of the Router, and the other end to an Ethernet port on a PC.

D Repeat step C to connect more PCs, a switch, or other network devices to the Router.

E Connect a different Ethernet network cable from your cable or DSL modem to the Internet port on the Router's back panel.

F Power on the cable or DSL modem.



C



E

G Connect the power adapter to the Router's Power port, and then plug the other end into an electrical outlet.

H The Power and Internet LEDs on the front panel will light up green as soon as the power adapter is connected properly.

I Power on the PCs.

J The Router's hardware installation is now complete.

NOTE: Before setting up the Router, make sure your PCs are configured to obtain an IP (or TCP/IP) address automatically from the Router.



G

These instructions will show you how to configure the Router. You only need to configure the Router once using any computer you have set up.

A Open your web browser. Enter **http://192.168.1.1** in its Address field. Press the **Enter** key.

B A password request screen will appear. Enter the default user name and password, **admin**, in lowercase letters in the User Name and Password fields. (For added security, you should later set a new password, using the Administration tab's Management screen of the web-based utility). Then click the **OK** button.

C The web-based utility will appear with the Setup tab and IP Mode selected. Click on the **WAN** option under the Setup tab.

D If requested by your ISP (usually cable ISPs), complete the Host Name and Domain Name fields, and the MTU and MTU Size fields. Otherwise, leave the defaults.

Address **http://192.168.1.1**

A

B



C

E

For the Connection Type setting, six connection types are offered through the drop-down menu. Each Setup screen and available features will vary depending on which connection type you select.

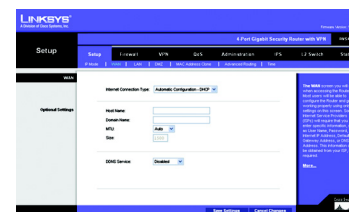
Internet Connection Type

Automatic Configuration - DHCP: If you are connecting through DHCP or a dynamic IP address from your ISP, keep this default setting.

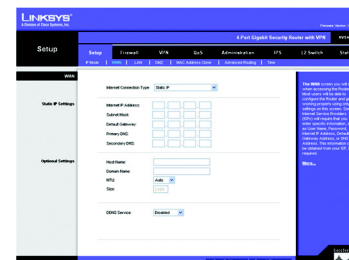
Static IP: If your ISP assigns you a static IP address, select Static IP from the drop-down menu. Complete the Internet IP Address, Subnet Mask, Default Gateway, and DNS fields. You need to enter at least one DNS address.

PPPoE: If you are connecting through PPPoE, select PPPoE from the drop-down menu. Complete the User Name and Password fields.

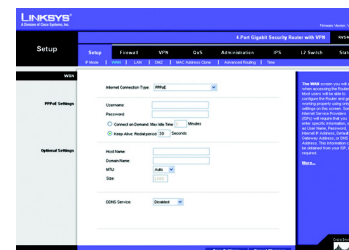
PPTP: PPTP is a service used in Europe only. If you are using a PPTP connection, check with your ISP for the necessary setup information.



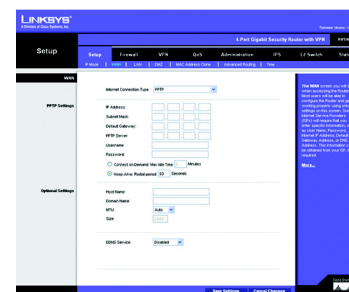
Automatic - DHCP



Static IP



PPPoE



PPTP

Heartbeat Signal. Heartbeat Signal is used primarily in Australia. Check with your ISP for the necessary setup information.

L2TP. L2TP is used mostly in Europe. Check with your ISP for the necessary setup information.

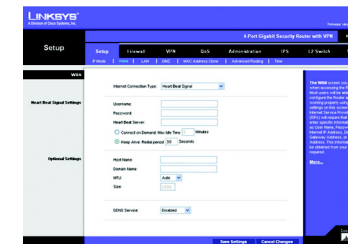
F When you are finished entering your Internet connection settings, click the **Save Settings** button to save your changes.

G Restart or power on your PCs so they can obtain the router's new settings.

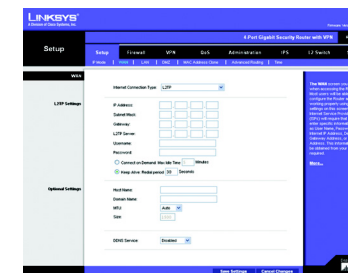
H Test the setup by opening your web browser from any computer and entering **http://www.linksys.com/registration**.

Congratulations! The installation of the Router is complete.

NOTE: For more advanced settings and security options, refer to the User Guide on the RVS4000 CD-ROM.



Heartbeat Signal



L2TP

LINKSYS®

A Division of Cisco Systems, Inc.

For additional information or troubleshooting help, refer to the User Guide on the CD-ROM. You can also call or e-mail for further support.

24-hour Technical Support

800-326-7114
(toll-free from US or Canada)

E-mail Support
support@linksys.com

Website
http://www.linksys.com or
http://support.linksys.com

RMA (Return Merchandise Authorization)
http://www.linksys.com/support

FTP Site
ftp://ftp.linksys.com

Sales Information
800-546-5797 (800-LINKSYS)

Linksys is a registered trademark or trademark of Cisco Systems, Inc. and/or its affiliates in the U.S. and certain other countries. Copyright © 2006 Cisco Systems, Inc. All rights reserved.

RVS4000-QI-60524NC RR