

Addendum: Additional VNE Driver Support for Cisco Prime Network 4.0

Revised: June 10, 2014

This document contains information about new or enhanced Virtual Network Elements (VNE) drivers that became available after Cisco Prime Network 4.0 was released. It also contains device support documentation addenda for information that is currently missing from [Cisco Prime Network 4.0 Supported VNEs](#).

Contents

Obtaining the New and Enhanced Device Drivers	2
Which Jar File is a Device Using?	3
New Support for Cisco Optical Transport Devices.....	4
Cisco Carrier Packet Transport Series (CPT 600 and CPT 200)—Additional Support	4
Cisco Carrier Packet Transport Series (CPT 50)—Additional Support	4
New Support for Cisco Routers.....	5
Cisco IOS 12000 Series Routers—Additional Support	5
Cisco XR 12000 Series Routers—Additional Support.....	5
Cisco CRS Carrier Routing System—Additional Support.....	6
Cisco ASR 9000 Series Routers —Additional Support.....	7
Cisco NCS Network Convergence System Routers - Additional Support.....	8
Cisco ISR 2900 Series Routers —Additional Support.....	10
Cisco ISR 3900 Series Routers —Additional Support.....	10
Cisco ASR 1000 Series Routers —Additional Support.....	11
Cisco ASR 901 Routers —Additional Support	11
Cisco ASR 901S Series Aggregation Services Routers —Additional Support	11
Cisco ASR 902 Series Aggregation Services Routers —Additional Support	12
Cisco ASR 903 Routers —Additional Support	12
Cisco ASR 5000 Series Routers —Additional Support.....	13
Cisco 7600 Series Routers —Additional Support.....	13

New Support for Cisco Switches	14
Cisco ME 3600X Series Ethernet Access Switches—Additional Support	14
Cisco ME 3800X Series Carrier Ethernet Switches—Additional Support.....	14
Cisco ME 2600X Series Ethernet Access Switches—Additional Support	15
Cisco Nexus 7000 Series Switches—Additional Support	15
New Support for Cisco Adaptive Security Appliances	17
Cisco ASA 1000V Cloud Firewall - Additional Support	17
New Support for Cisco RF Gateway Series	17
Cisco RF Gateway Series - Additional Support.....	17
New Support for Citrix NetScaler VPX Virtual Appliances	17
Support for Change and Configuration Management in 4.0	18
Support for Reduced Polling in 4.0	21
Support for Command Scripts in 4.0.....	23
New Command Script Support in 4.0	23
Existing Command Support Prior To 4.0.....	25
Appendix – IOS-XE to IOS Software Mapping.....	37

Obtaining the New and Enhanced Device Drivers

New and enhanced VNE support is provided through Device Packages (DPs) and service or point patches, as they become available. To obtain this additional support, do the following:

- For Device Packages (DPs), log into Cisco.com and go to the [Cisco Prime Network Software Download site](#).
- For Point Patches and Service Patches, contact your Cisco representative.

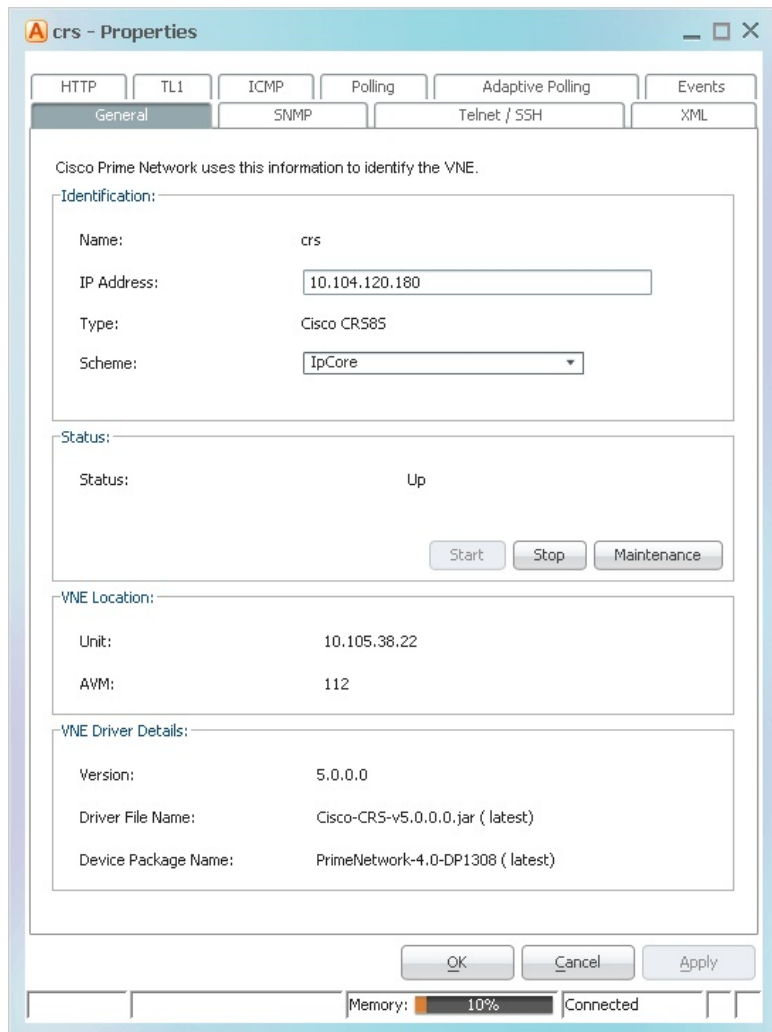
Once you download the new support, it can be installed on Cisco Prime Network 4.0 the downloadable package provides new and enhanced device support for multiple device families (as described in this document or in the release note or readme that accompanies the download).

Note: To get the IOS XE to IOS equivalent software version mapping, please refer to [Appendix A](#).

Which Jar File is a Device Using?

To identify the jar file that is being used by any devices that are managed by Prime Network, open the Administration GUI client and check the properties of the VNE. In the General tab, the driver file name is displayed.

The following example shows the CRS is using the driver file Cisco-CRS-v5.0.0.0.jar that was provided in the base release of Prime Network 4.0 (“DP 0”).



With this information, you can:

- Check if a newer version is available and what new support it provides (see the “New Support” sections in this document).
- Check which Device Package provides a specific jar version (see “Driver Files Provided per DP Release” in this document).

New Support for Cisco Optical Transport Devices

The following new support is available for Cisco Optical Transport devices.

Cisco Carrier Packet Transport Series (CPT 600 and CPT 200)—Additional Support

- **Cisco CPT—Supported Software Versions**

Software Version	Added in:
ONS 9.5.3	DP 1310
ONS 9.5.2.3	DP 1401
ONS 9.7	DP 1403

- **Cisco CPT —Supported Technologies**

Technology	Added in:
SyncE	DP 1308

- **Cisco CPT —Supported Modules**

Module Name	Module Description	Added in:
ONS-SC_GE-LX	1000BASE LX SFP	DP 1403

Cisco Carrier Packet Transport Series (CPT 50)—Additional Support

- **Cisco CPT 50—Supported Software Versions**

Software Version	Added in:
IOS 15.2(2)SC	DP 1403

- **Cisco CPT 50—Supported Modules**

Module Name	Module Description	Added in:
ONS-SC_GE-LX	1000BASE LX SFP	DP 1403

New Support for Cisco Routers

The following new support is available for Cisco routers.

Cisco IOS 12000 Series Routers—Additional Support

- **Cisco IOS 12000—Supported Modules**

Module Name	Module Description	Added in:
12416E-SFC	Cisco 12010/12410 Enhanced Switch Fabric Card	DP 1308
12416E-CSC	Cisco 12016/12416 Enhanced Clock Scheduler Card	DP 1308

- **Cisco IOS 12000—Supported Events and Miscellaneous Support**

Support for:	Raw Format	Added in:
Events : (Syslog) MBUS OIR Syslog	%MBUS-6-OIR: Clock Scheduler Card(10) OC-192 Removed from Slot 2 %MBUS-6-OIR: Clock Scheduler Card(10) OC-192 Inserted into Slot 2	DP 1308

Cisco XR 12000 Series Routers—Additional Support

- **Cisco XR 12000—Supported Software Versions**

Software Version	Added in:
XR 4.3.1	DP 1308
XR 4.3.2	DP 1403
XR 5.1.0	DP 1403
XR 5.1.1	DP 1403

- **Cisco XR 12000—Supported Events and Miscellaneous Support**

Support for:	Added in:
Events: (Syslog) L2-SPA-5-STATE_CHANGE	DP 1308

Cisco CRS Carrier Routing System—Additional Support

- **Cisco CRS—Supported Software Versions**

Software Version	Added in:
XR 4.3.1	DP 1308
XR 4.3.2	DP 1403
XR 5.1.1	DP 1403
XR 5.1.2	DP 1405

- **Cisco CRS—Supported Modules**

Module Name	Module Description	Added in:
SPA-4XOC3-POS	Cisco 4-Port OC-3c/STM-1c POS Shared Port Adapter	DP 1308
SPA-4XOC12-POS	Cisco 4-Port OC-12c/STM-4 POS SPA	DP 1308
SPA-8XOC3-POS	8-Port OC-3c/STM-1 POS SPA	DP 1308
SPA-8XOC12-POS	Cisco 8-Port OC-12c/STM-4 POS SPA	DP 1308
2-40GE-L/OTN	Cisco CRS 2-Port 40 Gigabit Ethernet LAN/OTN Interface Module	DP 1308
CRS-8-FC140/M	Cisco CRS Series 8 Slots Fabric Card / Multi (140G)	DP 1308
40x10GE-WLO	Cisco CRS Series 40x10GbE Interface Module	DP 1405
4X100GE-LO	Cisco CRS Series 4x100GbE Interface Module	DP 1405
CRS-LSP-X	Cisco CRS Series Label Switch Processor 400G	DP 1405
CRS-FP-X	Cisco CRS Series Forwarding Processor 400G	DP 1405
CRS-MSX-X	Cisco CRS Series Modular Services Card 400G	DP 1405
CRS-16-FC400/S	Cisco CRS Series 16 Slots Fabric Card / Single (400G)	DP 1405
CRS-8-FC400/S	Cisco CRS Series 8 Slots Fabric Card / Single (400G)	DP 1405
CPAK-100G-SR10	100GBASE-SR10 CPAK Module for MMF	DP 1405
CPAK-100G-LR4	100GBASE-LR4 CPAK Module for SMF	DP 1405
CFP-100G-SR10	Cisco 100GBASE-SR10 CFP Module for MMF	DP 1405

- **Cisco CRS—Supported Events and Miscellaneous Support**

Support for:	Added in:
Events: (Syslog) L2-SPA-5-STATE_CHANGE	DP 1308

Cisco ASR 9000 Series Routers —Additional Support

- **Cisco ASR 9000—Supported Network Elements**

NE Type	Product Name	SysOID	Added in:
ciscoASR9904	Cisco ASR 9904 chassis	1.3.6.1.4.1.9.1.1762	DP 1401
ciscoASR9912	Cisco ASR 9912 Chassis	1.3.6.1.4.1.9.1.1709	DP 1401
ASR9000v	ASR 9000v DC powered chassis	NA	DP 1403

- **Cisco ASR 9000—Supported Software Versions**

Software Version	Added in:
XR 4.3.1	DP 1308
XR 4.3.2	DP 1401
XR 4.3.4	DP 1401
XR 5.1.0	DP 1401
XR 5.1.1	DP 1403
XR 5.1.2	DP 1405

- **Cisco ASR 9000—Supported Modules**

Module Name	Module Description	Added in:
A9K-MPA-8X10GE	ASR 9000 8-port 10-Gigabit Ethernet Modular Port Adapter, requires SFP+ optics	DP 1308
ASR-9010-FAN-V2	ASR 9010 Version 2 fan tray for high-power optics	DP 1308
A9K-SIP-700-8G	Session Initiation Protocol (SIP)-700 line card for the Cisco ASR 9000 Series has 8-GB memory	DP 1308
SPA-OC192POS-XFP	1-port OC192/STM64 POS/RPR XFP Optics	DP 1401
CFP-100G-SR10	Cisco 100GBASE-SR10 CFP transceiver module for MMF	DP 1401
SPA-8XCHT1/E1-V2	8-port Channelized T1/E1 V2 to DS0 Shared Port Adapter	DP 1403
ONS-SC+-10G-ER	10GBASE-ER SFP+ Module for SMF-Commercial Temp	DP 1403
ONS-SC+-10G-SR	10GBASE-SR SFP+ Module for MMF-Commercial Temp	DP 1403
ONS-SC+-10G-ZR	10GBASE-ZR SFP+ Module for SMF-Commercial Temp	DP 1403
ONS-SC+-10G-LR	10GBASE-LR SFP+ Module for SMF-Commercial Temp	DP 1403
DWDM-SFP10G-61.41	10GBASE-DWDM 1561.41 nm SFP+ (100-GHz ITU grid)	DP 1403
CWDM-SFP-1550	Cisco CWDM 1550-nm SFP; Gigabit Ethernet and 1 and 2 Gb Fibre Channel	DP 1403

Module Name	Module Description	Added in:
ONS-SC+-10G-30.3	10G MR, SFP+ 1530.33, 100 GHz, LC	DP 1403
ONS-SC+10G-C	10G MR, Full C Band Tuneable DWDM SFP+, 50 Ghz, LC	DP 1403
SPA-1XOC48POS/RPR	1 port OC48c/STM-16c POS/RPR Shared Port Adapter	DP 1405
A9K-VSM-500	Cisco ASR 9000 Series Virtualized Service Module	DP 1405
GLC-FE-100EX	100BASE-EX for Fast Ethernet SFP Ports	DP 1405
ONS-XC-10G-1610	OC192/10GE/OTU2, CWDM, 1610nm, XFP C-Temp, 40km range	DP 1405

- **Cisco ASR 9000—Supported Technologies**

Technology	Added in:
Megatron Satellite Support	DP 1308
1588v2	DP 1308

- **Cisco ASR 9000—Supported Events and Miscellaneous Support**

Support for:	Added in:
Events: (Trap)OS-DUMPER-5-CORE_FILE_NAME, OS-DUMPER-5-DUMP_FAILURE, cmplsTeP2mpTunnelDestDown, cmplsTeP2mpTunnelDestUp	DP 1308
Events: (Trap) PLATFORM-CCTL-6-TEMP_ALARM	DP 1401

Cisco NCS Network Convergence System Routers - Additional Support

- **Cisco NCS 6000—Supported Network Elements**

NE Type	Product Name	SysOID	Added in:
ciscoNCS6008	Cisco NCS 6008 - 8-Slot Chassis	1.3.6.1.4.1.9.1.1851	DP 1310

- **Cisco NCS 6000—Supported Software Versions**

Software Version	Added in:
XR 5.0.0	DP 1310
XR 5.0.1	DP 1403

- **Cisco NCS 6000—Supported Modules**

Module Name	Module Description	Added in:
NCS-6008	NCS 6008 – 8 – Slot Chassis	DP 1310
NC6-FC	NCS 6008 Fabric Card	DP 1310
NC6-RP	NCS 6008 Route Processor	DP 1310
NC6-FANTRAY	NCS 6008 Chassis Fan Tray	DP 1310
NCS-AC-PWRTRAY	NCS AC Power Tray	DP 1310
NC6-10X100G-M-P	NCS 6000 10X100G Multi-Service CXP	DP 1310
NC6-10X100G-L-P	NCS 6000 10X100G LSR CXP	DP 1310
NC6-10X100G-M-K	NCS 6000 10x100G Multi-Service CPAK	DP 1403
NC6-60X10GE-M-S	Cisco NCS 6000 Series 60 Port 10Gigabit Ethernet Multiservice Line Card SFP+ Optics	DP 1403
NC6-60X10GE-L-S	Cisco NCS 6000 60 Port 10Gigabit Ethernet Label Switch Router Line Card SFP+ Optics	DP 1403
NCS-DC-PWRMOD	NCS6008 Standalone Linkwood Chassis	DP 1403
CPAK-100G-SR10	100GBASE-SR10 CPAK Module for MMF	DP 1403
SFP-10G-SR-X	10GBASE-SR 850 nm MMF (LANPHY & WANPHY)	DP 1403
SFP-10G-SR	10GBASE-SR 850 nm MMF (LANPHY)	DP 1403
SFP-10G-LR	10GBASE-LR 1310 nm SMF (LANPHY)	DP 1403
SFP-10G-ER	10GBASE-ER 1550 nm SMF1	DP 1403
SFP-10G-LR-X	10GBASE-LR 1310 nm SMF (LANPHY & WANPHY)	DP 1403
SFP-10G-ZR	10GBASE-ZR SFP+, SMF 80km	DP 1403

- **Cisco NCS 6000—Supported Technologies**

Technology	Added in:
Routing Entity	DP 1310
ARP Entity	DP 1310
IP Interfaces	DP 1310
VRRP	DP 1310
OSPF	DP 1310
BGP	DP 1310
ISIS	DP 1310
LAG	DP 1310
MPLS	DP 1310
LSE	DP 1310

Technology	Added in:
LDP	DP 1310
MPLS-TE	DP 1310
BFD	DP 1310
CDP	DP 1310
IP Multicast	DP 1310
Access List	DP 1310
Ethernet	DP 1310
Physical Inventory	DP 1310

Cisco ISR 2900 Series Routers —Additional Support

- **Cisco ISR 2900—Supported Software Versions**

Software Version	Added in:
IOS 15.4(1)T	DP 1403

- **Cisco ISR 2900—Supported Modules**

Module Name	Module Description	Added in:
EHWIC-4ESG	4 port 10/100/1000 Enhanced High-Speed WAN Interface Gigabit Ethernet switch	DP 1403
EHWIC-1GE-SFP-CU	Enhanced HWIC, Dual Mode 1 port SFP/Copper	DP 1403

Cisco ISR 3900 Series Routers —Additional Support

- **Cisco ISR 3900 —Supported Network Elements**

NE Type	Product Name	SysOID	Added in:
Cisco3945SPE250	Cisco 3945SPE250	1.3.6.1.4.1.9.1.1145	DP 1403

- **Cisco ISR 3900—Supported Software Versions**

Software Version	Added in:
IOS 15.4(1)T	DP 1403

- **Cisco ISR 3900—Supported Modules**

Module Name	Module Description	Added in:
EHWIC-4ESG	4 port 10/100/1000 Enhanced High-Speed WAN Interface Gigabit Ethernet switch	DP 1403
EHWIC-1GE-SFP-CU	Enhanced HWIC, Dual Mode 1 port SFP/Copper	DP 1403

Cisco ASR 1000 Series Routers —Additional Support

- **Cisco ASR 1000—Supported Software Versions**

Software Version	Added in:
XE 3.8.2	DP 1310

Cisco ASR 901 Routers —Additional Support

- **Cisco ASR 901—Supported Software Versions**

Software Version	Added in:
15.3(2)S	DP 1308
15.3(2)S2	DP 1308
15.3(3)S	DP 1310
15.4(1)S	DP 1401
15.3(3)S1	DP 1403
15.3(3)S2	DP 1403
15.4(2)S	DP 1405

Cisco ASR 901S Series Aggregation Services Routers —Additional Support

- **Cisco ASR 901S —Supported Network Elements**

NE Type	Product Name	SysOID	Added in:
A901S-2SG-F-D	Cisco A901S-2SG-F-D Router	1.3.6.1.4.1.9.1.1820	DP 1403
A901S-3SG-F-D	Cisco A901S-3SG-F-D Router	1.3.6.1.4.1.9.1.1819	DP 1403
A901S-4SG-F-D	Cisco A901S-4SG-F-D Router	1.3.6.1.4.1.9.1.1818	DP 1403

- **Cisco ASR 901S —Supported Software Versions**

Software Version	Added in:
IOS 15.4(1)S1	DP 1403

Cisco ASR 902 Series Aggregation Services Routers —Additional Support

- **Cisco ASR 902 —Supported Software Versions**

Software Version	Added in:
IOS XE 3.12	DP 1405

- **Cisco ASR 902 —Supported Network Elements**

NE Type	Product Name	SysOID	Added in:
ASR-902	Cisco ASR 902 Router	1.3.6.1.4.1.9.1.1897	DP 1405

- **Cisco ASR 902 —Supported Modules**

Module Name	Module Description	Added in:
A902-FAN-E	ASR 902 Enhanced FAN Tray with FAN Filter Slot	DP 1405

Cisco ASR 903 Routers —Additional Support

- **Cisco ASR 903—Supported Software Versions**

Software Version	Added in:
IOS 15.2(4)S3	DP 1308
IOS 15.3(2)S	DP 1308

Software Version	Added in:
IOS 15.2(4)S3	DP 1308
IOS 15.3(2)S	DP 1308
IOS 15.3(3)S	DP 1308
IOS XE 3.7.3 ES	DP 1401
IOS XE 3.7.4 ES	DP 1401
IOS 15.4(1)S	DP 1401
IOS XE 3.10.1	DP 1403
IOS XE 3.10.2	DP 1403
IOS XE 3.12	DP 1405

Cisco ASR 5000 Series Routers —Additional Support

- **Cisco ASR 5000—Supported Software Versions**

Software Version	Added in:
StarOS 14.1 MR	DP 1308
StarOS 15.0	DP 1310

- **Cisco ASR 5000 —Supported Modules**

Module Name	Module Description	Added in:
ASR5K-PSC-64G-K9	Cisco ASR 5000 Processing Card ASR5K-PSC-64G-K9	DP 1405

- **Cisco ASR 5000—Supported Events and Miscellaneous Support**

Support for:	Added in:
Events: (Traps)starAAAAAuthServerMisconfigured, starSubscriberLimit, starSessionRejectNoResource, starManagerFailure, starPCFUnreachable, starNwReachServerDead, starSRPAAAUreachable, starGESwitchFailure, starSessMgrRecoveryComplete, starBSUnreachable, starLicenseAboutToExpire, starLAGGroupDown	DP 1308

Cisco 7600 Series Routers —Additional Support

- **Cisco 7600—Supported Software Versions**

Software Version	Added in:
15.3(1)S1	DP 1308
15.3(2)S	DP 1403
15.3(3)S	DP 1403
15.4(1)S	DP 1403

- **Cisco 7600—Supported Modules**

Module Name	Module Description	Added in:
ES+XT-8TG3CXLQ	7600 ES+T High queue 8x 10GE, DFC3CXL	DP 1310

New Support for Cisco Switches

The following new support is available for Cisco switches.

Cisco ME 3600X Series Ethernet Access Switches—Additional Support

- **Cisco ME 3600X—Supported Software Versions**

Software Version	Added in:
15.3(2)S	DP 1308
15.4(1)S	DP 1403
IOS 15.4(2)S	DP 1405

Cisco ME 3800X Series Carrier Ethernet Switches—Additional Support

- **Cisco ME 3800X—Supported Software Versions**

Software Version	Added in:
15.3(2)S	DP 1308
15.3(3)S	DP 1401
15.4(1)S	DP 1403
IOS 15.4(2)S	DP 1405

Cisco ME 2600X Series Ethernet Access Switches—Additional Support

- **Cisco ME 2600X —Supported Software Versions**

Software Version	Added in:
15.2(2)SA1	DP 1308

- **Cisco ME 2600X —Supported Technologies**

Technology	Added in:
EFP	DP 1308
LAG	DP 1308
REP	DP 1308
OSPF	DP 1308

Cisco Nexus 7000 Series Switches—Additional Support

- **Cisco Nexus 7000—Supported Network Elements**

NE Type	Product Name	SysOID	Added in:
N77-C7706	Cisco Nexus 7706 Series 06 Slot Chassis	1.3.6.1.4.1.9.12.3.1.3.1354	DP 1405
N77-C7710	Cisco Nexus 7710 Series 10 Slot Chassis	1.3.6.1.4.1.9.12.3.1.3.1353	DP 1405

- **Cisco Nexus 7000—Supported Software Versions**

Software Version	Added in:
NX-OS 6.2.6	DP 1405
NX-OS 6.2.8	DP 1405

- **Cisco Nexus 7000—Supported Modules**

Module Name	Module Description	Added in:
N7K-M202CF-22L	Cisco Nexus 7000 M2-Series 2 Port 100 GbE with XL Option (req. CFP)	DP 1308

N7K-M206FQ-23L	Cisco Nexus 7000 M2-Series 6 Port 40 GbE with XL Option (req. QSFP+)	DP 1308
N77-F248XP-23E	N7706 : N77-F248XP-23E : Nexus F2E cards for the 7706	DP 1405
N77-C7706-FAB-2	N7706 : N77-C7706-FAB-2 : N77-C7706-FAB-2 card	DP 1405
N77-F312CK-26	N7706/N7710 : N77-F312CK-26 : F3 line card for Crossbow (7700): 12x100GE – with 6.2(6)	DP 1405
N77-F348XP-23	N7706/N7710 : N77-F348XP-23 : F3 line card for Crossbow (7700): 48x10GE – with 6.2(6)	DP 1405
N77-F324FQ-25	N7706/N7710 : N77-F324FQ-25 : F3 line card for Crossbow (7700): 24x40GE – with 6.2(6)	DP 1405
N77-F248XP-23E	N7710 : N77-F248XP-23E : Nexus F2E cards for the 7710	DP 1405
N77-SUP2E	N7710 : N77-SUP2E card	DP 1405
N77-C7710-FAB-2	N7710 : N77-C7710-FAB-2 card	DP 1405
N77-AC-3KW	N7710 : AC: N77-AC-3KW card	DP 1405
N77-DC-3KW	N7710 : AC: N77-DC-3KW card	DP 1405
N7K-F312FQ-25	N7010 : N7K-F312FQ-25 : F3 line cards (EFT) for Nexus 7K (12x40GE card)	DP 1405
N7K-F248XP-25	N7010 : N7K-F248XP-25E : F2e – 1/10GE line card	DP 1405
QSFP-40G-SR4	40GBASE-SR4 QSFP Transceiver Module with MPO Connector	DP 1405
CPAK-100G-LR4	100GBASE-LR4 CPAK form factor transceiver module for SMF, 4 LAN-WDM lanes	DP 1405
N2K-C2248PQ	Cisco Nexus 2248PQ 10GE Fabric Extender, 2PS, 4 Fan Module, 48x1/10GE (req SFP/SFP+) + 4x40G QSFP+(req QSFP+), choice of airflow and power supply	DP 1405

- **Cisco Nexus 7000—Supported Events and Miscellaneous Support**

Support for:	Added in:
Events : (Syslog) ETHPORT-5-IF_HARDWARE-Removed, ETHPORT-5-IF_HARDWARE-Inserted, MODULE-5-STANDBY_SUP_OK, VDC_MGR-2-VDC_OFFLINE, VDC_MGR-2-VDC_ONLINE, VPC-4-VPC_ROLE_CHANGE-Primary, VPC-4-VPC_ROLE_CHANGE-Secondary, HSRP_ENGINE-5-STANDBY_CHANGE, PLATFORM-5-FEX_PS_REMOVE, PLATFORM-5-FEX_PS_FOUND, ETHPORT-3-IF_DOWN_ADMIN_DOWN, ETHPORT-5-IF_UP	DP 1405

New Support for Cisco Adaptive Security Appliances

The following new support is available for Cisco Adaptive Security Appliances (ASA).

Cisco ASA 1000V Cloud Firewall - Additional Support

- **Cisco ASA 1000V Series Cloud Firewall —Supported Network Elements**

NE Type	Product Name	SysOID	Added in:
ciscoASA1000v	Cisco ASA 1000 Virtual Cloud Firewall	1.3.6.1.4.1.9.1.1614	DP 1308

- **Cisco ASA 1000V Series Cloud Firewall —Supported Software Versions**

Software Version	Added in:
8.7(1)1	DP 1308

New Support for Cisco RF Gateway Series

The following new support is available for Cisco RF Gateway Series.

Cisco RF Gateway Series - Additional Support

- **Cisco RF Gateway Series —Supported Technologies**

Technology	Added in:
QAM Channels	DP 1308

New Support for Citrix NetScaler VPX Virtual Appliances

The following new support is available for Citrix NetScaler VPX Virtual Appliances.

- **Citrix NetScaler VPX —Supported Network Elements**

NE Type	Product Name	SysOID	Added in:
citrixNetscalerVPX	Citrix NetScaler VPX Virtual Appliances	1.3.6.1.4.1.5951.1	DP 1308

- **Citrix NetScaler VPX —Supported Software Versions**

Software Version	Added in:
8.7(1)1	DP 1308

- **Citrix NetScaler VPX—Supported Technologies**

Technology	Added in:
IP	DP 1308
IP Routing	DP 1308
ARP	DP 1308
Physical Inventory	DP 1308

Support for Change and Configuration Management in 4.0

The following devices support Change and Configuration Management in Prime Network 4.0.

Device Series	Software Version	Provided/Added in:
Cisco Nexus 1000v Series Switches	4.2(1)SV2(1.1)	PN 4.0
Cisco Cloud Services Router (CSR) 1000V	3.9.0aS	PN 4.0
Cisco Nexus 3000 Series Switches	5.0 (U5)	PN 4.0
Cisco ASA 5500 Series Firewall	5.0 (U5)	PN 4.0
Cisco Catalyst 6500 Virtual Switching System (VSS)	12.2.33-SX12a	PN 4.0
Cisco Universal Broadband Router 10000 (uBR10k)	12.2(33)	PN 4.0
Cisco RF Gateway	IOS: 12.50(SQ) IOSXE:3.2.0	PN 4.0
Cisco Carrier Packet Transport (CPT) 600 Series (supported in IOS mode)	CPT Platform System Software 9.5.1	PN 4.0
	ONS 15454: 9.5.3	PN 4.0 DP 1310
	CPT Platform System Software 9.7	PN 4.0 DP 1403
Cisco ASR 9000 Series Aggregation Services Routers	Cisco IOS XR 4.2.1	PN 4.0
	Cisco IOS XR 4.3.1	PN 4.0 DP 1308
	Cisco IOS XR 4.3.2	PN 4.0 DP 1401
	Cisco IOS XR 4.3.4	PN 4.0 DP 1401
	Cisco IOS XR 5.1.0	PN 4.0 DP 1401
	Cisco IOS XR 5.1.1	PN 4.0 DP 1403
	Cisco IOS XR 5.1.2	PN 4.0 DP 1405

Device Series	Software Version	Provided/Added in:
Cisco ASR 5000 Series Mobile Gateway	Star OS 12.3	PN 4.0
	Star OS 12.2	PN 4.0
	Star OS 14.1 MR	PN 4.0 DP 1308
	Star OS 15.0	PN 4.0 DP 1310
Cisco ASR 901 Series Aggregation Services Routers	Cisco IOS 15.1(2), Cisco IOS 15.1(2)SNG, Cisco IOS 15.1(2)SNH	PN 4.0
	Cisco IOS 15.3(2)S	PN 4.0 DP 1308
	Cisco IOS 15.3(2)S2	PN 4.0 DP 1308
	Cisco IOS 15.4(1)S	PN 4.0 DP 1401
	Cisco IOS 15.4(2)S	PN 4.0 DP 1405
Cisco ASR 901S Series Aggregation Services Routers	Cisco IOS 15.4(1)S1	PN 4.0 DP 1403
Cisco ASR 903 Series Aggregation Services Routers5	Cisco IOS 15.2(1)S, Cisco IOS 15.2(1)S1, Cisco IOS 15.2(2)S	PN 4.0
	Cisco IOS 15.3(3)S	PN 4.0 DP 1308
	Cisco IOS 15.2(4)S3	PN 4.0 DP 1308
	Cisco IOS 15.3(2)S	PN 4.0 DP 1308
	Cisco IOS 15.4(2)S	PN 4.0 DP 1405
Cisco 7600 Series Routers with Application Control Engine (ACE) (ACE10-6500-K9 and ACE30-MOD-K9)	A2(3.4)	PN 4.0
Cisco Nexus 5000 Series Switches	Cisco NX-OS 5.0(2)N2(1)	PN 4.0
Cisco Nexus 7000 Series Switches	Cisco NX-OS 5.0(3)	PN 4.0
Cisco Adaptive Security Appliance (ASA) 5550 Series	Cisco Adaptive Security Appliance Software 8.4.1	PN 4.0
Cisco ASA 5580 Series	Cisco Adaptive Security Appliance Software 8.4.1	PN 4.0
Cisco 800 Series Routers	Cisco IOS 12.3.2-XA7, Cisco IOS 15.1.3-T	PN 4.0
Cisco 1700 Series Routers	Cisco IOS 12.3.14-T7, Cisco IOS 12.4.25-d	PN 4.0
Cisco 1800 Series Routers	Cisco IOS 12.4.9-T, Cisco IOS 15.1.1-T1	PN 4.0
Cisco 2500 device series	Cisco IOS 12.3.26	PN 4.0
Cisco 7300 device series	Cisco IOS 12.2.33-SB8a	PN 4.0
Cisco 2600 Series Multiservice Platform Routers	Cisco IOS 12.3-16a, Cisco IOS 12.3.26	PN 4.0

Device Series	Software Version	Provided/Added in:
Cisco 2800 Series Integrated Services Routers	Cisco IOS 12.3.14-YT1, Cisco IOS 15.1.2_T1	PN 4.0
Cisco 2900 Series Integrated Services Routers	Cisco IOS 15.1(3)T	PN 4.0
Cisco 3900 Series Integrated Services Routers	Cisco IOS 15.1(3)T	PN 4.0
Cisco 3700 Series Multiservice Access Routers	Cisco IOS 12.4.9-T7	PN 4.0
Cisco Catalyst 2900 Series Switches	Cisco IOS 12.1.22-EA6, Cisco IOS 15.1.3-T	PN 4.0
Cisco Catalyst 3500XL Series Switches	Cisco IOS 12.0.5-WC17	PN 4.0
Cisco Catalyst 3550 Series Switches	Cisco IOS 12.2.44-SE6, Cisco IOS 12.2.53-SE2	PN 4.0
Cisco Catalyst 3560 Series Switches	Cisco IOS 12.2.53-SE2, Cisco IOS 12.2.44-SE6	PN 4.0
Cisco Catalyst 3750 Series Switches	Cisco IOS 12.2.55-SE	PN 4.0
Cisco CRS Carrier Routing System	Cisco IOS XR 4.0.0	PN 4.0
	Cisco IOS XR 4.3.1	PN 4.0 DP 1308
Cisco 10000 Series Routers	Cisco IOS 12.2.33-SB8a, Cisco IOS 12.2.31-SB9, Cisco IOS 15.0(1)S	PN 4.0
Cisco 12000 Series Routers (IOS)	Cisco IOS 12.0.32-SY4	PN 4.0
Cisco Catalyst 4900 Series Ethernet Switch	Cisco IOS 12.2.(50)SG6, Cisco IOS 12.2(53)SG, Cisco IOS 12.2(54)SG	PN 4.0
Cisco Catalyst 6500 Series Switches (IOS)	Cisco IOS 12.2.33-SX14	PN 4.0
	Cisco IOS 12.2(33)SX13	PN 4.0
Cisco ME 3600X Ethernet Access Switches	Cisco IOS12.2(52)EY	PN 4.0
	Cisco IOS 15.3(2)S	PN 4.0 DP 1308
Cisco ME 3800X Carrier Ethernet Switches	Cisco IOS12.2(52)EY	PN 4.0
	Cisco IOS 15.3(2)S	PN 4.0 DP 1308
Cisco ME 6500 Series Ethernet Switches (cisco6524)	Cisco IOS 12.2.33-SX13	PN 4.0
Cisco 3800 Series Integrated Services Routers	Cisco IOS 12.4(24)T1	PN 4.0
Cisco 7200 Series Routers	Cisco IOS 12.4(24)T	PN 4.0
Cisco 7600 Series Routers	Cisco IOS 12.2(18)SXF16, Cisco IOS 12.2(33)SRD4	PN 4.0
	Cisco IOS 15.0(1)S1	PN 4.0
	Cisco IOS 15.3(1)S1	PN 4.0 DP 1308
Cisco ASR 1000 Series Aggregation Services Routers	Cisco IOS XE 2.6.2, Cisco IOS XE 3.2, Cisco IOS XE 3.1.0S	PN 4.0

Device Series	Software Version	Provided/Added in:
Cisco ASR 9000 Series Aggregation Services Routers	Cisco IOS XR 3.9.1, Cisco IOS XR 3.9.0	PN 4.0
Cisco Catalyst 3750 Metro Series Switches	Cisco IOS 12.2(52)SE	PN 4.0
Cisco Catalyst 4500 Series Switches	Cisco IOS 12.2(53)SG, Cisco IOS 12.2(54)SG194	PN 4.0
Cisco CRS-1 Carrier Routing System	Cisco IOS XR 3.6.0	PN 4.0
	Cisco IOS XR 5.1.2	PN 4.0 DP 1405
Cisco ME 3400 Series Ethernet Access Switches	Cisco IOS 12.2(25)SEG3, Cisco IOS 12.2(53)SE	PN 4.0
Cisco MWR 2900 Series Mobile Wireless Routers	Cisco IOS 12.2(33)MRA	PN 4.0
Cisco XR 12000 Series Routers	Cisco IOS XR 3.7.0	PN 4.0
	Cisco IOS XR 4.3.1	PN 4.0 DP 1308

Support for Reduced Polling in 4.0

Prime Network 4.0 includes all of the reduced polling support that was provided in previous releases, which is listed below.

Device Series	Added in:
Cisco 10000 Series	PN 4.0
Cisco 1900 Series ISR	PN 4.0
Cisco 2000 Series CGR	PN 4.0
Cisco 2900 Series ISR	PN 4.0
Cisco 3900 Series ISR	PN 4.0
Cisco 7200 Series	PN 4.0
Cisco 7600 Series	PN 4.0
Cisco ASR 1000 Series	PN 4.0
Cisco ASR 5000 Series	PN 4.0
Cisco ASR 9000 Series	PN 4.0
Cisco ASR 901 Series	PN 4.0
Cisco ASR 903 Series	PN 4.0
Cisco CPT Series	PN 4.0
Cisco CSR 1000v Series	PN 4.0
CRS	PN 4.0
Cisco Catalyst 3750 Metro Series	PN 4.0

Device Series	Added in:
Cisco Catalyst 4500 Series	PN 4.0
Cisco Catalyst 4900 Series	PN 4.0
Cisco Connected Grid Switch 2500 Series	PN 4.0
Cisco MDS 9000 Series	PN 4.0
Cisco ME 26xx Series	PN 4.0
Cisco ME 3400 Series	PN 4.0
Cisco ME 3600X Series	PN 4.0
Cisco ME 3800X Series	PN 4.0
Cisco ME 4900 Series	PN 4.0
Cisco MWR 2900 Series	PN 4.0
Cisco Nexus 10xx Series	PN 4.0
Cisco Nexus 3000 Series	PN 4.0
Cisco Nexus 5000 Series	PN 4.0
Cisco Nexus 7000 Series	PN 4.0
Cisco XR 12000 Series	PN 4.0
Cisco uBR10000 Series	PN 4.0
Cisco NCS 6000 Series	PN 4.0 DP 1310
Cisco ASR 902 Series	PN 4.0 DP 1405

Support for Command Scripts in 4.0

Prime Network 4.0 provides new support for command scripts as shown in the following table.

New Command Script Support in 4.0

New Command Support in 4.0	Supported on:
Basic Operations	
Basic Device Settings Add Host Name Remove Host name Add DNS server Remove DNS server Add NTP server Remove NTP server Add Radius server Remove Radius server Add Tacacs server Add Tacacs+ server Remove Tacacs server Remove Tacacs+ server Syslog Host Logging Add SNMP Configuration Remove SNMP Configuration Update SNMP Configuration Add Traps Enable Traps Remove Traps	Cisco NX OS and Cisco IOS XE Cisco Carrier Packet Transport (CPT 200 and CPT 600) System Cisco Carrier Packet Transport (CPT 50) System* Note: SNMP Configuration not supported on Cisco Universal Broadband Router 10000 (uBR10k) and Cisco RF Gateway 10 devices that run on IOS and IOS XE
Device Ports Add port description Remove port description Update port description Change port status Assign to port Vlan Deassign port to Vlan	
Device Configuration Files and Memory Write Memory Running Config Running Config from File Startup Config	
Copy Files From FTP From TFTP To FTP To TFTP	
View users (Telnet Sessions) on device Users (Telnet session)	

New Command Support in 4.0	Supported on:
Systems Architecture Evolution Gateway (SAE-GW) Create SAE GW Modify SAE GW Delete SAE GW Show SAE GW	Cisco ASR 5000 Series Mobile Gateway
Configure QAM Create RF Profile Modify RF Profile Delete RF Profile Create Frequency Profile Delete Frequency Profile Create Lane Create Block Modify QAM Port Modify QAM Channel	Cisco RF Gateway 10
View QAM Configuration Show RF Profile Show Frequency Profile Show QAM Port Show QAM Channel	
Configure DEPI and L2TP Modify Port	Cisco RF Gateway 10
Modify Cable Port Configure Downstream Port Create Upstream Port Modify Upstream Port	Cisco Universal Broadband Router 10000 (uBR10k)
Create IP Interface Modify IP Interface Delete IP Interface	Cisco Universal Broadband Router 10000 (uBR10k) Cisco RF Gateway 10
View Upstream and Downstream Cable Configuration Show Upstream Show Downstream	Cisco Universal Broadband Router 10000 (uBR10k)

Existing Command Support Prior To 4.0

Existing Command Support Prior to 4.0	Supported on:
Connectivity Fault Management (CFM)	
Configure CFM Maintenance Domain Configure CFM Global Parameters Configure CFM Maintenance Intermediate Point (MIP) Configure CFM Continuity Check Configure CFM Service ID Configure CFM Maintenance endpoints (MEP) Enable CFM Continuity Check Enable CFM SNMP Server Traps Diagnose CFM with Show MEP Status Diagnose CFM with Show MEP Crosscheck Status Diagnose CFM with Ping Remote MEP with MAC Diagnose CFM with Ping Remote MEP with MPID Diagnose CFM with Ping Remote MEP with Multicast Diagnose CFM with Traceroute Remote MEP with MAC Diagnose CFM with Traceroute Remote MEP with MPID	Cisco 7600 Series Routers Cisco ME 3400 Series Ethernet Access Switches Cisco ME 3750 Series Ethernet Access Switches Cisco ASR 9000 Series Aggregation Services Routers <i>(CFM IEEE 802.1ag (draft 8.1))</i> Cisco Mobile Wireless Router 2941 <i>(CFM Cisco draft mode)</i> Catalyst 6500 Series (IOS) Switches Cisco 3900 Series Integrated Services Routers ASR 1000 <i>(CFM 802.1ag/EFM 802.3ah)</i> Cisco XR 12000 Cisco CRS Series Routers Cisco ME 3600X Carrier Ethernet Switches Cisco ME 3800X Carrier Ethernet Switches Cisco 3900 Series Integrated Service Routers (ISR) Cisco MWR 2900 Series Mobile Wireless Routers Cisco Carrier Series Aggregation Services Routers Cisco Carrier Packet Transport (CPT 200 and CPT 600) System Cisco Carrier Packet Transport (CPT 50) System
Resilient Ethernet Protocol (REP)	
Show REP segment information	Cisco 7600 Series Routers Cisco MWR 2941 Mobile Wireless Routers 2941 Cisco Catalyst 3750 Metro Series Switches Cisco ME 6524 Ethernet Switch All Cisco Catalyst Switches Cisco ME 3600X and Cisco ME 3800X Carrier Ethernet Switches Cisco Carrier Packet Transport (CPT 200 and CPT 600) System Cisco Carrier Packet Transport (CPT 50) System
Carrier Grade – Network Address Translation (CG-NAT)	
Add Static Port Forwarding Add NAT 64 Forwarding Add 6rd Forwarding Delete Static Port Forwarding Show Pool Utilization	Cisco CRS Series Routers
Ethernet LMI (E-LMI)	
Global E-LMI Enable On Interface Configure to Multipoint To Multipoint or Point To Point EVC Configure UNI in an Interface Configure Service Instance Vlan Id on Interface	Cisco 7600 Series Routers Cisco Catalyst 3750 Metro Series Switches Cisco Catalyst 6500 Series (IOS) Switches Cisco ME 3400 Series Ethernet Access Switches Cisco MWR 2941 Mobile Wireless Routers Cisco ME3600X and Cisco ME3800X Carrier Ethernet Switches Cisco ASR9000 Series Routers

Existing Command Support Prior to 4.0	Supported on:
Pseudowire ping and show commands	
Ping Pseudowire Display Pseudowire	Cisco IOS and Cisco IOS XR devices supporting pseudowire technology
Link OAM	
Assign template on interface Configure multipoint to multipoint or point to point EVC Enable OAM on interface Disable OAM on interface Enable E-LMI on interface Configure OAM parameter on interface Start Remote Loopback Stop Remote Loopback	Cisco 7600 Series Routers Cisco Catalyst 3750 Metro Series Switches Cisco Catalyst 6500 Series (IOS) Switches Cisco ME 3400 Series Ethernet Access Switches Cisco MWR 2941 Mobile Wireless Routers Cisco ASR 9000 Series Aggregation Services Routers Cisco 2900 Series Integrated Services Routers Cisco 3900 Series Integrated Services Routers Cisco ME 3600X Ethernet Access Switches Cisco ME 3800X Carrier Ethernet Switch Routers Cisco 1900 Series Integrated Services Routers Cisco ASR 903 Series Aggregation Services Routers Cisco Carrier Packet Transport (CPT 200 and CPT 600) System Cisco Carrier Packet Transport (CPT 50) System
MPLS-TP	
Tunnel Ping Tunnel Trace LSP path Lockout	Cisco 7600 Series Routers Cisco Carrier Packet Transport (CPT 200 and CPT 600) System Cisco Carrier Packet Transport (CPT 50) System
LSP Ping LSP Trace LSP Lockout LSP path No Lockout Add Global Configuration Update Global configuration Remove Global Configuration Add Link Configuration Remove Link Configuration	Cisco 7600 Series Routers Cisco Carrier Packet Transport (CPT 200 and CPT 600) System Cisco Carrier Packet Transport (CPT 50) System Cisco ASR 9000 Series Aggregation Services Routers Cisco ASR 903 Series Aggregation Services Routers
Add BFD Template Configuration Remove BFD Template Configuration Show BFD Template Show BFD Template at Tunnel Add Label Range Configuration Remove Label Range Configuration	Cisco ASR 903 Series Aggregation Services Routers Cisco 7600 Series Routers Cisco Carrier Packet Transport (CPT 200 and CPT 600) System Cisco Carrier Packet Transport (CPT 50) System Note: Add Label Range Configuration and Remove Label Range Configuration not supported on Cisco IOS
BFD Global Configuration	Cisco ASR 9000 Series Aggregation Services Routers
mLACP	
Show Group Show MPLS LDP Show Channel Show LACP internal	Cisco 7600 Series Devices Cisco 6509 NEB-A Series Devices Cisco ASR 9000 Series Routers
Session Border Controller (SBC)	
SIP Adjancies Add SIP Adjacency	Cisco ASR 1000 Series Aggregation Services Router

Existing Command Support Prior to 4.0	Supported on:
Update SIP Adjacency Delete SIP Adjacency Add SIP Adjacency Outbound AuthRealm Update SIP Adjacency Outbound AuthRealm Delete SIP Adjacency Outbound AuthRealm	
Session Border Control (SBC) (continued)	
SIP Header Profiles Add SIP Header Profile Update SIP Header Profile Delete SIP Header Profile Add SIP Header Profile Header Update SIP Header Profile Header Add SIP Header Profile Entry Update SIP Header Profile Entry Delete SIP Header Profile Entry Add SIP Header Profile Condition	Cisco ASR 1000 Series Aggregation Services Router
SIP Option Profiles Add SIP option Profile Update SIP option Profile Delete SIP option Profile Add SIP Parameter Profile Delete SIP parameter Profile Add SIP Parameter Profile Parameter Update SIP Parameter Profile Parameter Delete SIP Parameter Profile Parameter	
Blacklists Add Blacklist Delete Blacklist Add Blacklist Reason Update Blacklist Reason Delete Blacklist Reason	
Call Admission Control (CAC) Policies Add CAC Policy Set Update CAC Policy Set Delete CAC Policy Set Add CAC Policy Table Update CAC Policy Table Delete CAC Policy Table Add CAC Rule Entry Update CAC Rule Entry Delete CAC Rule Entry Add Call Policy Set Update Call Policy Set Delete Call Policy Set Add Call Policy Table Update Call Policy Table Delete Call Policy Table Add Call Rule Entry Update Call Rule Entry Delete Call Rule entry	

Existing Command Support Prior to 4.0	Supported on:
Session Border Control (SBC) (continued)	
Codec Lists Add Codec List Delete Codec List Add Codec List Entry Update Codec List Entry Delete Codec List Entry	Cisco ASR 1000 Series Aggregation Services Router
Media Addresses Add Media Address Add Media Address Dbe Delete Media Address	
QoS Profiles Add QoS Profile Update QoS Profile Delete QoS Profile	
Viewing SBC Statistics Current 15 Min Statistics Current 5 Min Statistics Current Day Statistics Current Hour Statistics H.248 Statistics Previous 15 Min Statistics Previous 5 Min Statistics Previous Day Statistics Previous Hour Statistics CPS Data Media Statistics Components	
SONET	
Show BER Threshold	Cisco 7600 Series Routers Cisco CRS Series Routers Cisco IOS 12000 Series GSR
Configure Clock Source	Cisco 7600 Series Routers Cisco CRS Series Routers
Show Controller data Show TCA Threshold Show Line Counters Show Medium Counters Show Path Counters Show Section Counters Show Trace Details Clear SONET SDH Counters	Cisco CRS Series Routers

Existing Command Support Prior to 4.0	Supported on:
Cisco IP over dense wavelength division multiplexing (IPoDWDM)	
Show controller Data Show Device Log	Cisco 7600 Series Routers Cisco CRS Series Routers
Show PM History data Show RTPM counters Show RTPM threshold Configure G.709 ODU Configure G.709 OTU Configure G.709 TTI	
Configure G.709 Wrapper Configure Loopback	Cisco CRS Series Routers
Show Wavelength Map Clear counters Configure Channel Configure FEC Mode	Cisco 7600 Series Routers Cisco CRS Series Routers Cisco IOS 12000 Series Gigabit Switch Router (GSR)
Configure PM FEC data Configure PM Optics data Configure PM OTN data	Cisco 7600 Series Routers Cisco CRS Series Routers
Configure Laser State Show IM trace details Configure Transmit data Configure Rx LOS threshold	Cisco CRS Series Routers
Basic Operations Commands	
Interface Commands Add Interface Configuration Update Interface Configuration Remove Interface Configuration Enable Interface Disable Interface Add Loopback Interface Remove rate limit	Cisco IOS and Cisco IOS XR devices Note: Remove rate limit is not supported on Cisco IOS XR software
Access Control Lists (ACLs) Create Access list Modify Access List Delete Access List Show Access List Remove Access List Remove Access List Entry	Cisco ASR 5000 Series Mobile Gateway Cisco ASR 5500

Existing Command Support Prior to 4.0	Supported on:
Basic Operations Commands (continued)	
Basic Device Settings Add Host Name Remove Host name Add DNS server Remove DNS server Add NTP server Remove NTP server Add Radius server Remove Radius server Add Tacacs server Add Tacacs+ server Remove Tacacs server Remove Tacacs+ server Syslog Host Logging Add SNMP Configuration Remove SNMP Configuration Update SNMP Configuration Add Traps Enable Traps Remove Traps	Cisco IOS and Cisco IOS XR devices
Device Ports Add port description Remove port description Update port description Change port status Assign to port Vlan Deassign port to Vlan	Cisco IOS and Cisco IOS XR devices Note: Not supported on Cisco Carrier Packet Transport (CPT) system
Device Configuration Files and Memory Write Memory Running Config Running Config from File Startup Config	Cisco IOS and Cisco IOS XR devices
Copy Files From FTP From TFTP To FTP To TFTP	Cisco IOS and Cisco IOS XR devices Note: Not supported on Cisco Carrier Packet Transport (CPT) system
View users (Telnet Sessions) on device Users (Telnet session)	Cisco IOS and Cisco IOS XR devices
Ping destination and VRFs and view Trace Route from device Destination from device Trace Route from device Traceroute VRF Ping VRF	Cisco IOS and Cisco IOS XR devices

Existing Command Support Prior to 4.0	Supported on:
Basic Operations Commands (continued)	
View Interface Briefs and IP Routes IP Route VRF IP route Interface Brief	Cisco IOS and Cisco IOS XR devices
VRF	
Modify VRF Delete VRF	Cisco ASR 5000 Series Mobile Gateway Cisco ASR 5500
IP Interface	
Create Interface Modify Interface Delete Interface Configure Secondary IP Address Delete Secondary IP Address	Cisco ASR 5000 Series Mobile Gateway Cisco ASR 5500
MPLS	
Configure MPLS Discovery Configure MPLS Label Range Enable MPLS on Interface Disable MPLS on Interface	Cisco ASR 9000 Series Routers Cisco ASR 901 Series Routers Cisco ASR 903 Series Routers
RSVP	
Configure RSVP Enable RSVP on Interface Disable RSVP on Interface	Cisco ASR 9000 Series Routers Cisco ASR 901 Series Routers Cisco ASR 903 Series Routers
BGP	
Create BGP Router Modify BGP Router Delete BGP Router Create BGP Address Family Modify BGP Address Family Delete BGP Address Family Create BGP Neighbor Modify BGP Neighbor Delete BGP Neighbor	Cisco ASR 5000 Series Mobile Gateway Cisco ASR 9000 Series Routers Cisco ASR 901 Series Routers Cisco ASR 903 Series Routers
Virtual Router Redundancy Protocol (VRRP)	
Create VRRP Group Modify VRRP Group Delete VRRP Interface	Cisco ASR 9000 Series Routers
Bundle Ethernet	
Configure Bundle Ethernet	Cisco ASR 9000 Series Routers Cisco ASR 901 Series Routers Cisco ASR 903 Series Routers

Existing Command Support Prior to 4.0	Supported on:
Y.1731 Probes	
Configure Probe Endpoint Association Configure Profile Create on Demand Probe configuration Deassociate Profile Delete profile Show SLA operations detail Show SLA Profile	Cisco ASR 9000
Configure IP SLA parameters Delete IP SLA parameters Show IP SLA	Cisco CPT device Cisco Carrier Packet Transport (CPT 200 and CPT 600) System Cisco Carrier Packet Transport (CPT 50) System
MToP (Clock Commands)	
Create PTP Clock Port Modify PTP Clock Port Create SyncE Global Modify SyncE Global Create SyncE Interface Modify SyncE Interface	Cisco ASR 9000 Series Routers Cisco ASR 901 Series Routers Cisco ASR 903 Series Routers
Delete PTP Clock Port Show PTP Clock Port Create PTP Clock Global Modify PTP Clock Global	Cisco ASR 901 Series Routers Cisco ASR 903 Series Routers
Configure ESMC Global Modify ESMC Global Configure ESMC Interface Disable ESMC Interface	Cisco ASR 903 Series Routers
Authentication, Authorization and Accounting (AAA)	
Create Diameter Accounting Server Create Diameter Authentication Server Delete AAA Group Modify AAA Group	Cisco ASR 9000 Devices
IP Pool	
Delete IP Pool Modify IP Pool	Cisco ASR 5000 Series Mobile Gateway
Diagnose Subscriber Access Points	
Show DHCP Binding Show IP Subscriber Management Trace Show PPoE Trace Show Subscriber Dynamic Template Trace All Show Subscriber Manager Disconnect History Show Subscriber Manager Session History Show Subscriber Manager Trace Show Subscriber Session Details by Filter	Cisco ASR 5000 Series Mobile Gateway Cisco ASR 5500

Existing Command Support Prior to 4.0	Supported on:
Mobile Technologies	
GGSN Create PLMN Identifier Create SGSN Delete SGSN Modify SGSN	Cisco ASR 5000 Series Mobile Gateway Cisco ASR 5500
GTPU Create GTPU Bind IP Address Modify GTPU Bind IP Address Delete GTPU Bind IP Address Delete GTPU Modify GTPU	
APN Create Qos to DSCP Mapping Create Virtual APN Delete APN Modify APN	
GTPP Create CGF Create Storage Server Modify Storage Server Delete Storage Server Delete CGF Delete GTPP Modify CGF Modify GTPP Show CGF	
EGTP Modify EGTP Delete EGTP	
PDN Gateway (P-GW) Create P-GW PLMN Delete P-GW Modify P-GW	
Serving Gateway (S-GW) Create S-GW PLMN Delete S-GW Modify S-GW	

Existing Command Support Prior to 4.0	Supported on:
Systems Architecture Evolution Gateway (SAE-GW)	
MAG Configuration Commands Create MAG Modify MAG Delete MAG Show MAG Create Profile ID QCI Mapping Delete Profile ID QCI Mapping Create Profile Modify Profile Delete Profile	Cisco ASR 5000 Series Mobile Gateway Cisco ASR 5500
Active Charging Services (ACS) Create Group of Ruledefs Create Rulebase Create Ruledef Delete Active Charging Service Modify Active Charging Service Create Access Ruledef Delete Access Ruledef Show Access Ruledef Create Host Pool Delete Host Pool Create Charging Action Delete Charging Action Show Charging Action	
Foreign Agent Configuration Create FA Modify FA Delete FA Show FA Create SPI Modify SPI Delete SPI Create IKE Modify IKE Delete IKE Modify Advertisement Modify Authentication Modify GRE Modify HA Configuration Modify Proxy Mobile IP Modify Registration Revocation	Cisco ASR 5000 Series Mobile Gateway
ePDG Configuration Create ePDG service Modify ePDG Service Delete ePDG Service Show ePDG Service	

Existing Command Support Prior to 4.0	Supported on:
Configuring and Viewing Configure BFD Create AAA Group Create APN Create Active Charging Service Create EGTP Create GGSN Create GTPP Create GTPU Create IP Pool Create P-GW Create QCI-QOS Mapping Create S-GW Create VRF Delete Context Modify License Create DHCP Delete DHCP Modify DHCP Create HA SPI List Delete HA SPI List Modify HA SPI List Create HA Service Delete HA Service Modify HA Service Create Network Requested PDP Context Delete Network Requested PDP Context Create Proxy DNS Delete Proxy DNS Modify Proxy DNS Create Route Access List Create Route Map Delete Route Access List Delete Route Map Modify Route Access List Modify Route Map Create Subscriber Delete Subscriber Modify Subscriber Show APN Show DHCP Show EGTP Show HA SPI List Show HA Service Show IP Pool Show License Show Route Access List Show Route Map Show Subscriber Create Policy Accounting Modify Policy Accounting Delete Policy Accounting	Cisco ASR 5000 Series Mobile Gateway

Existing Command Support Prior to 4.0	Supported on:
Data Center	
Viewing vPC Show Port Channel Capacity Show vPC Show vPC Consistency Parameters	Cisco Nexus 1000V Network Element Cisco Nexus 2000 Network Element Cisco Nexus 5000 Network Element Cisco Nexus 7000 Network Element
Monitoring Cisco FabricPath Configuration FabricPath Conflict MAC Address-Table Learning Mode	Cisco Unified Computing System (UCS)
TDM	
Configure Card Type Modify E1 Controller Modify T1 Controller	Cisco ASR 9000 Series Routers Cisco ASR 901 Series Routers Cisco ASR 903 Series Routers
Channelization commands for SONT/SDH (check)	
Configure Framing Configure AUG Mapping Configure AU4 Delete AU4 Configure TUG3 Delete TUG3 Configure STS Delete STS	Cisco ASR 903 Series Routers
Configure AU3 Delete AU3	Cisco ASR 9000 Series Routers
Configure Controller	Cisco ASR 9000 Series Routers Cisco ASR 903 Series Routers
Automatic Protection Switching (APS)	
Create APS Modify APS	Cisco ASR 9000 Series Routers Cisco ASR 903 Series Routers
PTP and SyncE	
Create PTP Clock Global Modify PTP Clock Global Create PTP Clock Port Modify PTP Clock Port	Cisco ASR 9000 Series Routers Cisco ASR 901 Series Routers Cisco ASR 903 Series Routers
Delete PTP Clock Port Show PTP Clock Port	Cisco ASR 901 Series Routers Cisco ASR 903 Series Routers
Create SyncE Global Modify SyncE Global Create SyncE Interface Modify SyncE Interface	Cisco ASR 9000 Series Routers Cisco ASR 901 Series Routers Cisco ASR 903 Series Routers
Configure ESMC Global Modify ESMC Global Configure ESMC Interface Disable ESMC Interface	Cisco ASR 903 Series Routers
VLAN	
Create VLAN Modify VLAN Delete VLAN	Cisco ASR 5000 Series Mobile Gateway

Existing Command Support Prior to 4.0	Supported on:
Configuring Intermediate System – to – Intermediate System (IS – IS) on Cisco Router	
Create ISI S Router	Cisco ASR 9000 Series Routers
Modify ISIS Router	Cisco ASR 901 Series Routers
Delete ISIS Router	Cisco ASR 903 Series Routers
Create ISIS Interface	
Modify ISIS Interface	
Delete ISIS Interface	
Create ISIS Address Family	
Modify ISIS Address Family	
Delete ISIS Address Family	
Create ISIS Interface Address Family	
Modify ISIS Interface Address Family	
Delete ISIS Interface Address Family	
Show ISIS Configuration	

*The following scripts are not applicable for CPT 50 only

- Add Radius server
- Remove Radius server
- Add Tacacs server
- Add Tacacs+ server
- Remove Tacacs server
- Remove Tacacs+ server
- Add Global Configuration
- Update Global configuration
- Remove Global Configuration

Appendix – IOS-XE to IOS Software Mapping

The following table maps the Cisco IOS XE software versions to the Cisco IOS software versions.

Cisco IOS XE Version	Cisco IOS version
3.1.0S	15.0(1)S
3.1.1S	15.0(1)S1
3.1.2S	15.0(1)S2
3.1.3S	15.0(1)S3
3.1.4S	15.0(1)S4
3.1.4aS	15.0(1)S4a
3.1.5S	15.0(1)S5
3.1.6S	15.0(1)S6
3.2.0S	15.1(1)S
3.2.1S	15.1(1)S1
3.2.2S	15.1(1)S2
3.3.0S	15.1(2)S

3.3.1S	15.1(2)S1
3.3.2S	15.1(2)S2
3.4.0S	15.1(3)S
3.4.0aS	15.1(3)S0a
3.4.1S	15.1(3)S1
3.4.2S	15.1(3)S2
3.4.3S	15.1(3)S3
3.4.4S	15.1(3)S4
3.4.5S	15.1(3)S5
3.4.6S	15.1(3)S6
3.5.0S	15.2(1)S
3.5.1S	15.2(1)S1
3.5.2S	15.2(1)S2
3.6.0S	15.2(2)S
3.6.1S	15.2(2)S1
3.6.2S	15.2(2)S1
3.7.0S	15.2(4)S
3.7.1S	15.2(4)S1
3.7.2S	15.2(4)S2
3.7.3S	15.2(4)S3
3.7.4S	15.2(4)S4
3.7.5S	15.2(4)S5
3.7.6S	15.2(4)S6
3.8.0S	15.3(1)S
3.8.1S	15.3(1)S1
3.8.2S	15.3(1)S2
3.9.0S	15.3(2)S
3.9.1S	15.3(2)S1
3.9.2S	15.3(2)S2
3.10.0S	15.3(3)S
3.10.1S	15.3(3)S1
3.10.2S	15.3(3)S2
3.10.3S	15.3(3)S3
3.10.4S	15.3(3)S4
3.10.5S	15.3(3)S5

3.10.6S	15.3(3)S6
3.10.7S	15.3(3)S7