



End of Sale/End of Life Report Tool Usage Notes for CiscoWorks NCM 1.7

October 2010, OL-23602-01

These usage notes provide information on using the End of Sale/End of Life Report tool that is available with CiscoWorks Network Compliance Manager (NCM) 1.7. You can use the End of Sale/End of Life Report tool to ascertain the End of Sale or End of Life details that impact the devices and modules in your network.

The End of Sale/End of Life Report tool retrieves information about the impacted devices and modules in your network, and then generates an End of Sale/End of Life report that lists the devices that have reached their End of Sale or End of Life date.

The End of Sale information for a device refers to announcements made in Cisco.com regarding the end of sales for a device or hardware.

The End of Life information refers to announcements made in Cisco.com regarding the end of service and support for a device or hardware.

This usage note contains the following sections:

- [Using the End of Sale/End of Life Report Tool, page 2](#)
- [End of Sale/End of Life Report Command Options, page 3](#)
- [Sample Output from the End of Sale/End of Life Report Tool, page 5](#)
- [Accessing the CiscoWorks NCM Documentation Set, page 8](#)
- [Obtaining Documentation and Submitting a Service Request, page 8](#)



Americas Headquarters:
Cisco Systems, Inc., 170 West Tasman Drive, San Jose, CA 95134-1706 USA

Using the End of Sale/End of Life Report Tool

You can generate End of Sale/End of Life reports in either HTML or Comma Separated Values (CSV) format.



Note

You cannot generate an End of Sale/End of Life report in both HTML and CSV formats at the same time.

You can also generate End of Sale/End of Life reports using the Cisco IOS Command Line Interface (CLI). To generate a report using the CLI, navigate to `<install_dir>\addins\cisco\eoX` and then run the appropriate script with desired command options. For example:

- For Windows, enter: `EoXReportGenerator.bat -u admin -p admin -cu catos -cp catpass`
- For Solaris and Linux, enter: `EoXReportGenerator.sh -u admin -p admin -cu catos -cp catpass`



Note

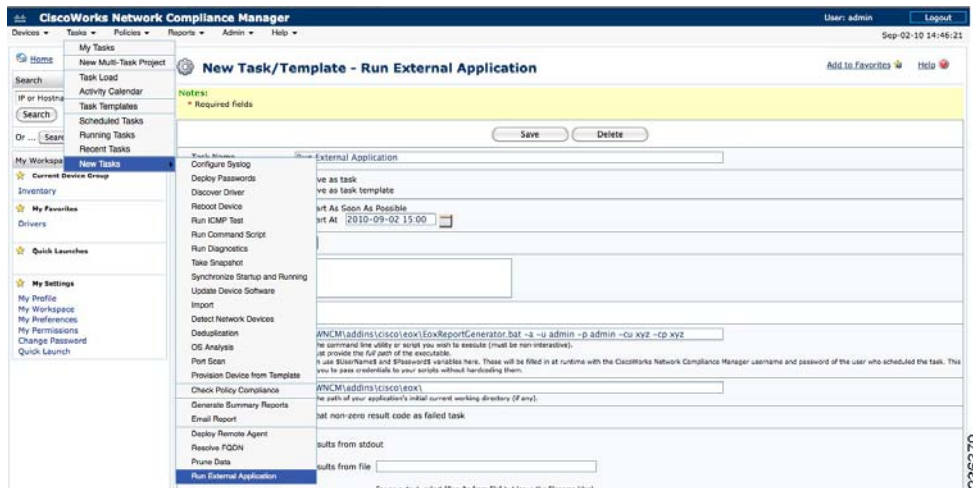
You cannot schedule reports using the CLI.

To generate an End of Sale/End of Life report, do the following:

Step 1 Log in to CiscoWorks NCM 1.7 as administrator.

Step 2 Choose **Tasks > New Task > Run External Application**.

The New Task/Template - Run External Application page appears.



Step 3 Enter the **Task Name** and **Start Date**. Include comments in the **Comments** field, if desired.

Step 4 In the **Run** field, enter the appropriate script for the End of Sale/End of Life Report tool that is appropriate for the platform on which CiscoWorks NCM is running:

- Windows—`EoXReportGenerator.bat`
- Solaris—`EoXReportGenerator.sh`
- Linux—`EoXReportGenerator.sh`

- Step 5** Enter any desired command options after the script in the **Run** field. For example:
- For Windows—`<install_dir>\addins\cisco\eox\EoxReportGenerator.bat -u admin -p admin -cu catos -cp catpass`
 - For Solaris and Linux—`<install_dir>\addins\cisco\eox\EoxReportGenerator.sh -u admin -p admin -cu catos -cp catpass`

See [Table 1](#) for a complete list of command options available for the End of Sale/End of Life Report tool.

- Step 6** In the **Start in** field, enter the path of the directory where the script resides:

```
<install_dir>\addins\cisco\eox
```

- Step 7** Click **Save Task**.

The End of Sale/End of Life report in either HTML or CSV format is saved under `<install_dir>/addins/cisco/eox/reports/<username>/eoxReport.<html/csv>`.

End of Sale/End of Life Report Command Options

[Table 1](#) lists the command options that you can use to generate an End of Sale/End of Life report that meets your needs.

Table 1 *End of Sale/End of Life Report Command Options*

Option Name	Short Form	Long Form	Argument Name	Optional	Dependency	Description
CWNCM Username	-u	cwncmUsername	username	No		Username used to log into CiscoWorks NCM.
CWNCM Password	-p	cwncmPassword	password	No		Password used to log into CiscoWorks NCM.
Cisco.com Username	-cu	ciscoComUsername	username	No		Username used to log into http://www.cisco.com .
Cisco.com Password	-cp	ciscoComPassword	password	No		Password used to log into http://www.cisco.com .
Proxy Server IP Address	-psi	proxyServer	ipaddress	Yes		Proxy Server IP Address to connect to external web-sites, such as http://www.cisco.com .
Proxy Server Username	-pu	proxyServerUsername	username	Yes		Username to connect to Proxy Server.
Proxy Server Password	-pp	proxyServerPassword	password	Yes		Password to authenticate with the Proxy Server.
Proxy Server Port	-psp	proxyPort	port number	Yes		Proxy Server Port.
Generate report for only the active devices	-active	active		Yes		To generate End of Sale/End of Life report for only the active devices (inactive devices are ignored).

Table 1 End of Sale/End of Life Report Command Options (continued)

Option Name	Short Form	Long Form	Argument Name	Optional	Dependency	Description
Generate End of Sale/End of Life report offline using the Eox Source file	-off	offline		Yes		<p>End of Sale/End of Life report will be generated offline (without accessing Cisco.com).</p> <p>Before using this option you must do the following:</p> <ol style="list-style-type: none"> Go to http://www.cisco.com/cisco/software/navigator.html. Choose Products > Network Management and Automation > Configuration and Change Management > Ciscoworks Network Compliance Manager > Ciscoworks Network Compliance Manager 1.7 > Network Compliance Manager (NCM) Core Application Software. Download the EOX_OFFLINE.zip file Unzip the file and copy the xml files to \$CWNCM_HOME\addons\cisco\eax\conf folder.
Sort Report by IPAddress	-s	sortIPAddress		Yes		Sort report by IPAddress. Default: Sort by Device Name.
CSV Report format	-csv	csvReport	filename	Yes		<p>Create report in CSV format. You can optionally give the CSV filename.</p> <p>Default: Create report in HTML format.</p>
Email report	-e	emailTo	emailTo	Yes		Send email to the given email address.
Attach report in the email	-a			Yes	-e and -csv	Attach the report in the email. This option is available only for CSV format reports (-csv).

Table 1 End of Sale/End of Life Report Command Options (continued)

Option Name	Short Form	Long Form	Argument Name	Optional	Dependency	Description
Display Help	-h					Display the command help.
Encrypted password	-encrypt			Yes	-p , -cp , and -pp	All passwords (-p , -cp, -pp) are encrypted.

To encrypt passwords using the ConnectorTool utility, do the following:

Step 1 Navigate to <CWNCM_Install_directory>/client.

Step 2 Run the following command:

```
$CWNCM_HOME/jre/bin/java -cp truecontrol-client.jar com.rendition.tools.ConnectorTool
-encrypt <clear-password>
```

The following example shows how to encrypt the password on a Windows platform:

```
c:/$CWNCM_HOME/jre/bin/java -cp truecontrol-client.jar
com.rendition.tools.ConnectorTool -encrypt Admin123
```

The string 'Admin123' is encrypted in single quotation marks. For example, 'EeZDE2yqmvP4b8q91RqYYQ=='

Sample Output from the End of Sale/End of Life Report Tool

Figure 1 shows a sample of the output from running the End of Sale/End of Life Report tool.

Figure 1 Sample Output from End of Sale/End of Life Report Tool

Total Cisco Devices = 45					
Affected Devices: 23 (EOS = 23, EOL = 23)					
Bulletin Number	Device Model	Device Count	EOS Date	EOL Date	Notes
EOL4081	Cisco AS5400 Universal Gateway*	1	22-DEC-06	21-DEC-11	
1958	Cisco 2621 Multiservice Platform*	1	26-APR-03	26-APR-08	
EOL5459	Cisco 3750 Stack*	6	15-OCT-07	31-OCT-12	All 3750 stack switches report the same sysobjectid in their default configuration. It may be necessary to manually verify the specific model of 3750.
EOL6784	Cisco 1812 Integrated Services Router*	1	01-APR-09	12-NOV-14	SNMP may not differentiate between various 1800 Series routers. Manual verification may be required.
EOL4112	Cisco Catalyst 2948G-GE-TX Switch	1	30-JAN-07	29-JAN-12	
1920A	Cisco 3640 Multiservice Platform*	2	15-NOV-02	01-NOV-07	SNMP does not correctly differentiate between the 3640 and 3640A chassis. Manual verification may be required.
EOL6501	Cisco 3750 Stack*	6	16-MAR-09	31-MAR-14	All 3750 stack switches report the same sysobjectid in their default configuration. It may be necessary to manually verify the specific model of 3750.
2771	Cisco Catalyst 3550 24 Switch	1	02-MAY-06	31-MAY-11	
EOL4079	Cisco AS5400 Universal Gateway*	1	22-DEC-06	21-DEC-11	
2114-1	Cisco 3640 Multiservice Platform*	2	31-DEC-03	31-DEC-08	SNMP does not correctly differentiate between the 3640 and 3640A chassis. Manual verification may be required.
EOL6926	Cisco 3750 Stack*, Cisco Catalyst 3560-24PS Switch, Cisco Catalyst 3560-24TS Switch	8	05-JUL-10	31-JUL-15	All 3750 stack switches report the same sysobjectid in their default configuration. It may be necessary to manually verify the specific model of 3750.
EOL6757	Cisco 3750 Stack*	6	24-APR-10	23-APR-15	All 3750 stack switches report the same sysobjectid in their default configuration. It may be necessary to manually verify the

In the report, End of Sale information appears in yellow and End of life information appears in red.

The End of Sale/End of Life report contains the following information:

- The date on which the report was generated.
- The total number of Cisco devices managed by CiscoWorks NCM.
- Affected Devices Table—Contains information on devices with End of Sale/End of Life announcements. This information is based on the number of devices, with each device counted only once.
- Affected Modules Table—Contains information on modules with End of Sale/End of Life announcements.
- Affected Device Inventory Table—Contains information on devices/modules with End of Sale/End of Life announcements. A single device can contain multiple modules, some of which might be impacted by End of Sale/End of Life announcements.

Fields in the End of Sale/End of Life Report Tables

Table 2 describes the fields in the Affected Devices table in the End of Sales/End of Life report.

Table 2 Affected Devices Table Fields

Field	Description
Bulletin Number	Bulletin number of End of Sale/End of Life Announcement for a device in Cisco.com. Click on the bulletin number link for more information on End of Sale/End of Life Announcement for that device in Cisco.com. There may be multiple announcements for a device. The same bulletin can apply to multiple devices.
Device Model	Model of the device. For instance, the device model can be Cisco Catalyst 4507R Switch.
Device Count	The number of affected devices.
EOS Date	Last date to order the product through Cisco point-of-sale mechanisms. The product is no longer for sale after this date.
EOL Date	Last date to receive service and support for the product. After this date, all support services for the product are unavailable, and the product becomes obsolete.
Notes	Displays important information about the affected device.

Table 3 describes the fields in the Affected Modules table in the End of Sales/End of Life report.

Table 3 *Affected Modules Table Fields*

Field	Description
Bulletin Number	<p>Bulletin number of End of Sale/End of Life Announcement for a module in Cisco.com.</p> <p>Click on the bulletin number link for more information on End of Sale/End of Life Announcement for that module in Cisco.com.</p> <p>There may be multiple announcements for a module.The same bulletin can apply to multiple modules.</p>
Module Type	Type of the module.
Module Count	The number of affected modules.
EOS Date	Last date to order the product through Cisco point-of-sale mechanisms. The product is no longer available for sale after this date.
EOL Date	Last date to receive service and support for the product. After this date, all support services for the product are unavailable, and the product becomes obsolete.
Notes	Displays important information about the affected module.

[Table 4](#) describes the fields in the Affected Device Inventory table in the End of Sales/End of Life report.

Table 4 *Affected Device Inventory Table Fields*

Field	Description
Device Name	Name of the device. Click on the device name for more information about the device.
IP Address	IP address of the device.
Device Model	Model of the device. For example, Cisco Catalyst 6513 Switch.
Module Type	Type of the module.
Module Model	Model of the module.
Location	Physical location of the devices on the network.
Bulletin Number	<p>Bulletin number of End of Sale/End of Life Announcement for a module in Cisco.com.</p> <p>Click on the bulletin number link for more information on End of Sale/End of Life Announcement for that module in Cisco.com.</p> <p>There may be multiple announcements for a module.The same bulletin can apply to multiple modules.</p>

Accessing the CiscoWorks NCM Documentation Set

All or any part of the CiscoWorks NCM documentation set, including this document, might be upgraded over time. Therefore, we recommend that you access the CiscoWorks NCM documentation set using the following URL:

http://www.cisco.com/en/US/products/ps6923/tsd_products_support_series_home.html



Tip

To cut and paste a two-line URL into the address field of your browser, you must cut and paste each line separately to get the entire URL without a break.

Obtaining Documentation and Submitting a Service Request

For information on obtaining documentation, submitting a service request, and gathering additional information, see the monthly *What's New in Cisco Product Documentation*, which also lists all new and revised Cisco technical documentation, at:

<http://www.cisco.com/en/US/docs/general/whatsnew/whatsnew.html>

Subscribe to the *What's New in Cisco Product Documentation* as a Really Simple Syndication (RSS) feed and set content to be delivered directly to your desktop using a reader application. The RSS feeds are a free service and Cisco currently supports RSS Version 2.0.

Cisco and the Cisco Logo are trademarks of Cisco Systems, Inc. and/or its affiliates in the U.S. and other countries. A listing of Cisco's trademarks can be found at www.cisco.com/go/trademarks. Third party trademarks mentioned are the property of their respective owners. The use of the word partner does not imply a partnership relationship between Cisco and any other company. (1005R)

Any Internet Protocol (IP) addresses and phone numbers used in this document are not intended to be actual addresses and phone numbers. Any examples, command display output, network topology diagrams, and other figures included in the document are shown for illustrative purposes only. Any use of actual IP addresses or phone numbers in illustrative content is unintentional and coincidental.

© 2010 Cisco Systems, Inc. All rights reserved.