



Cisco Smart+Connected Remote 150 Reference Guide

This document includes the following information about the Cisco Smart+Connected Remote 150:

- [Overview, page 2](#)
- [Install and Maintain the Disposable Batteries, page 3](#)
- [Install and Use the Optional Recharging Kit, page 4](#)
- [Configure the Remote Control, page 10](#)
- [Resetting the Device to Factory Settings, page 13](#)
- [Specifications, page 14](#)
- [Regulatory/Safety Information, page 15](#)
- [Related Documentation, page 15](#)
- [Warranty, page 16](#)
- [Service and Support, page 16](#)



Overview

The Cisco Smart+Connected Remote 150 allow residents to control automation features and manage their personal audio and video equipment from anywhere in the residence. The Cisco Remote 150 is used with an on-screen navigator (such as a television) and provides wireless connectivity of any intelligent device from anywhere in the residence. Line of sight is not required the—remote does not have to be pointed at the TV or Cisco Controller.

The Cisco Remote 150 offers the following:

- Complete control — Control an entire residential automation system with this compact remote.
- Great value — Priced to enable on-screen control in every room in the residence.
- Quick access control — Residents can press a single button to turn on their audio-video gear and play their favorite movies or music.
- Ready to use worldwide with international icons on buttons providing a simplified and intuitive user experience for all remote control activities.
- Recommended for use with the Cisco Controller 250 and Cisco Controller 800.

Figure 1 *Cisco Remote 150*



Install and Maintain the Disposable Batteries

- [Install the Batteries, page 3](#)
- [Battery Use and Care Tips, page 3](#)
- [Battery Replacement and Safety Rules, page 3](#)

Install the Batteries

Install the four (4) AA batteries (included) into the back of the Cisco Remote 150. Insert them according to the diagram provided in the battery compartment (with the + and - terminals aligned correctly).

Battery Use and Care Tips

- Keep the battery contacts and compartment clean.
- Remove the batteries from the product if it is not going to be used for several months.
- Extreme temperatures reduce battery performance. Avoid putting the Cisco Remote 150 in very warm places.

Battery Replacement and Safety Rules



Caution

To prevent a battery short, leakage or rupture:

- Use typical AAA Alkaline batteries only.
- Do not mix battery types, such as Alkaline and rechargeable NiMH batteries.
- Do not attempt to recharge a battery unless the battery is specifically marked “rechargeable.”
- Never dispose of batteries in a fire.

ATTENTION! Pour empêcher court-circuiter, fuite ou rupture de batterie:

- Utilisez les accumulateurs alcalins typiques d’AAA seulement.
- Ne mélangez pas les types de batterie, tels que les batteries alcalines et rechargeables de NiMH.
- N’essayez pas de recharger une batterie à moins que la batterie soit spécifiquement marquée « rechargeable ».
- Ne vous débarrassez jamais des batteries dans un feu.
- Ne vous débarrassez jamais des batteries dans un feu.

VORSICHT! Das Batteriekurzschluß, -durchsickern oder -abbruch verhindern:

- Benutzen Sie AAA alkalische Batterien nur im Schalter.
- Mischen Sie nicht Batteriearten, wie alkalische und nachladbare NiMH Batterien.
- Versuchen Sie nicht, eine Batterie neuzuladen, es sei denn die Batterie ist spezifisch gekennzeichnetes „nachladbares.“
- Entledigen Sie nie sich Batterien in einem Feuer.

Install and Use the Optional Recharging Kit

An optional Cisco Remote Charging Station with a rechargeable battery is available to ensure a fully charged battery at all times. If the battery level drops, simply place the remote in the station until the remote is fully charged and ready to use again. These items are purchased separately.

See the following for more information:

- [Ordering Information, page 5](#)
- [What's in the Box?, page 5](#)
- [Installing the Remote Charging Kit, page 5](#)
- [Recharging Station Lights, page 10](#)
- [Set Up Your Existing Remote for the Recharging Station, page 10](#)

Figure 2 *Cisco Smart+Connected Remote Charging Station*

**Note**

A lithium polymer rechargeable battery is used in this product. See the “Specifications” section on [page 14](#) for more information.

**Note**

We recommend that you keep the remote on the recharging station when not in use.

Ordering Information

Table 1 Cisco Smart+Connected Remote 150 Recharging Kit

Product Name	Part Number
Cisco Smart+Connected Remote 150 Recharging Kit	SCH-REMOTE-150-CHK
Note The Recharging Kit includes a charging station, rechargeable battery and new back cover plate for the remote.	
Cisco Smart+Connected Remote 150 Rechargeable Battery and Cover only	SCH-REMOTE-150-BPK

What's in the Box?

The recharging station is sold and shipped in a separate box (it is not included in the Cisco Remote box). Make sure the following items are in the box:

- Recharging Station Cradle
- Power Supply
- Rechargeable Battery (Lithium Polymer)
- Battery Cover
- Warranty Card

Installing the Remote Charging Kit



Note

IMPORTANT! The remote must be used in a project running release 2.5.0 or later to properly indicate the battery level; otherwise, a “Low Battery Warning” alert will appear on the Cisco Remote (if an alert is configured).

Procedure

- Step 1** Remove the old batteries from your new or existing remote.
- Turn the remote upside down. On the bottom of the remote, pull the battery cover toward you with your thumb and lift it off of the remote (Figure 3).

Figure 3 Remove the Battery Cover



- With your fingertip, pull out the old batteries (Figure 4).

Figure 4 Remove the Old Batteries



- Step 2** Insert the rechargeable battery into your new or existing remote.
- a. On the bottom of the remote (with the cover off and the old batteries taken out), insert the rechargeable battery by sliding the small end into the slot first (Figure 3). Note the orientation of + and - symbols for proper battery insertion (Figure 5).

Figure 5 Rechargeable Battery



- b. Seat the battery securely into the slot and push down (Figure 6).

Figure 6 Battery Installed



- Step 3** Place the new cover on your existing remote.

If you've purchased a new remote with your recharging station, follow Step 2; otherwise, follow both steps.



Note If you are using an existing remote with the new battery cover, it will appear that the paint color and texturing may be different. With normal usage, the new battery cover color and texture will blend to match the remote control. You should expect this to occur over a period of 1-2 months.

- a. Insert the remote's new battery cover into the remote. Notice the two metal plates on the cover; that's how you can differentiate the old cover from the new one (Figure 7).

Figure 7 *Replace the Cover*



- b. Slide the battery cover into the slot and then push down until the cover is horizontal. Slide the cover into the slot until it snaps into place.

Step 4 Attach the power supply to your recharging station

This section applies to recharging stations for existing or new remotes.

- a. Insert the small end of the USB cable into the back of the recharging station (inside the indentation) and thread the power cord through the indentation in the station ([Figure 8](#)).



Note You can thread the cord straight out or wind it around to the opposite end of the recharging station.

Figure 8 *Insert Power Cordthe Cover*



- b. Attach the USB cable to the power supply.
 - Remove the plastic shield from the power supply.
 - Attach the correct power plug adapter to the power supply by sliding it into the power supply's slot until it clicks into place.
 - (Optional) To remove the power plug adapter, press the Push button and slide the plug out.

- c. Insert the power plug into a power outlet to begin recharging.
- d. For convenience, place the recharging station close to where you use your remote.

Step 5 Set the charging indicator on your recharging station

This section applies to recharging stations for existing or new remotes.

- a. Turn the recharging station over.
- b. Notice the Charging Indicator button labeled 'High, Off, and Low' (Figure 9).

Figure 9 Charging Indicator Button



- c. Move the button to the desired light level.
 - High—Sets to the highest light level.
 - Off—Sets the light to off.
 - Low—Sets the light to low.
- d. Turn the recharging station over to its upright position.

Step 6 Place the remote on your Recharging Station

This section applies to recharging stations for existing or new remotes.

- a. If you purchased a recharging station *without* a remote, ensure that you've replaced your old batteries with the new rechargeable batteries and new cover.
- b. While holding the remote in a horizontal position, place it onto the charging station.
- c. Ensure that it is properly seated. The two metal plates on the back of the remote must touch the metal pins in the recharging station. Depending on your light setting an indicator light may come on at the bottom of the recharging station. ().

Recharging Station Lights

This section applies to recharging stations for existing or new remotes.

Depending on the Charging Indicator brightness you select, the indicator light will be High or Low brightness or Black/Off. When your recharging station is on, you may see the following lights.

- Red—The remote is recharging, and is not fully charged yet.
- Green—The remote is fully charged.
- Black—The light is off. Either the Charging Indicator is turned off, or the remote is not seated properly in the recharging station.

Set Up Your Existing Remote for the Recharging Station

You must update your remote to recognize the new rechargeable battery.

(Optional) You can check **Enable Recharge Station** in Composer Pro (SR-150 or SR-250 remote Properties page) to acknowledge the battery. This view also shows you the percent battery level.

Cisco Remote 150

If you have a Cisco Remote 150, use this button sequence on the remote:

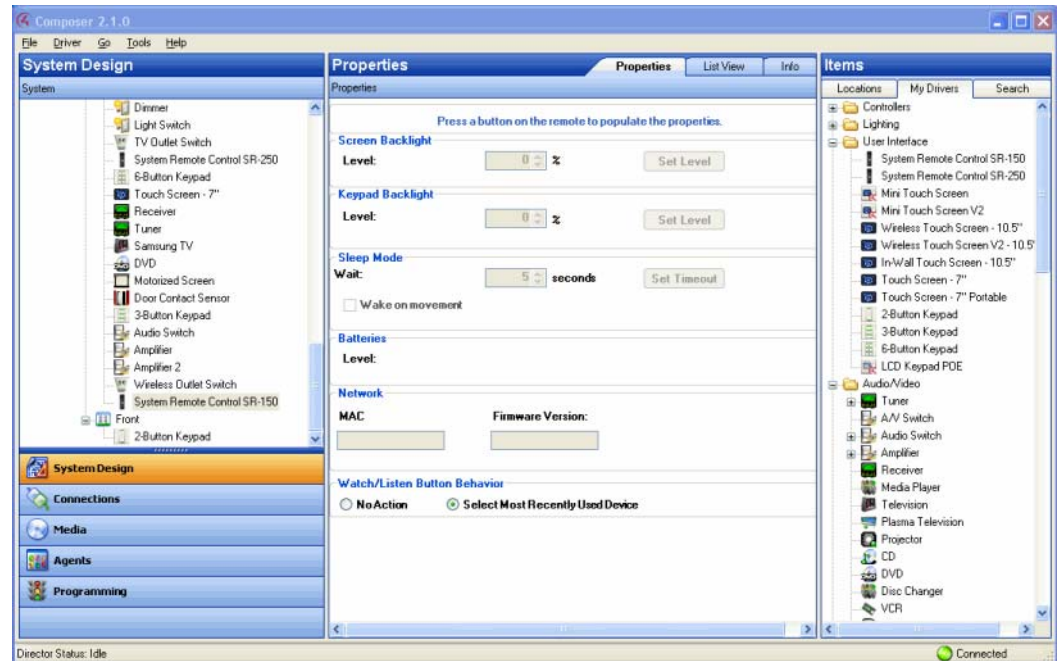
1. On the remote, press Room Off
2. Press #
3. Press *
4. Press 4
5. Press 5
6. Press 6
7. Press 0

Configure the Remote Control

-
- Step 1** Start Composer Pro and connect to a Director.
 - Step 2** In the **System Design** view, (selected by default), select the room where the Cisco Remote will reside.
 - Step 3** In the **My Drivers** tab, locate the **SR-150** under the **User Interface** section.
 - Step 4** Double-click **SR-150** to add the device to the project tree.
 - Step 5** Identify the Cisco Remote 150:
 - a. In the **Connections** view, click the **Network** tab.
 - b. Select **System Remote Control SR-150** in the center pane.
 - c. Click **Identify** (or right-click and choose **Identify**).
 - d. When prompted to do so, press the center button four (4) times to have the device identify to the system.
 - e. When the MAC address appears in the window, click **Close**.

- Step 6** View or change the Cisco Remote properties as needed in Composer Pro. In the **System Design** view's project tree, select the **System Remote Control SR-150** object to display the device's properties.

Figure 10 Properties



The properties include:

- **Keypad Brightness**—Set the light level (brightness) of the keypad backlight. Choose a percentage from 0 (Off) to 100 (full brightness).
- **Sleep Mode**—Set how long the Cisco Remote stays awake after no activity. The default setting is 15 seconds, but can be extended up to 60 seconds or can be reduced down to 0 to conserve battery life. Select wake on movement to wake the remote when picked up.
- **Batteries**—Displays the current strength of the batteries.
- **Network:**
 - **MAC**—Displays the Cisco Remote MAC address.
 - **Firmware Version**—Displays the current firmware version.
- **Watch/Listen Button Behavior**—Select to start the most recently-used device.

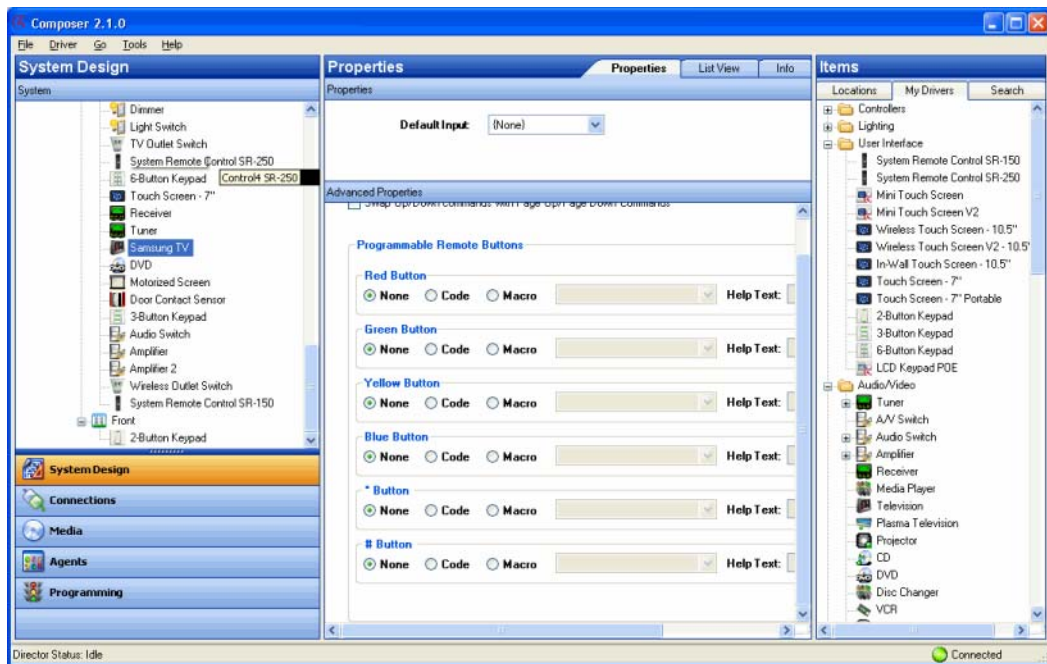
Program the Programmable Buttons

On the Cisco Remote 150, you can program six (6) soft buttons (Red, Green, Yellow, Blue, *, and #) to perform programmed activities. These buttons can be programmed to execute any of the Audio/Video device macros or IR codes. Program these options using the A/V device Properties page.

- Step 1** Start Composer Pro and connect to a Director.

- Step 2** Ensure the **System Design** view is selected.
- Step 3** Ensure that you have the following devices in your project:
 - Cisco Controller
 - System Remote Control SR-150
 - An A/V device to be controlled
- Step 4** Select the **Connections** view.
- Step 5** On the **Network** tab, ensure the **Controller** and the **System Remote Control** are both network identified (have a network address).
- Step 6** Program the programmable buttons (Red, Green, Yellow, Blue, *, or #) either based on the selected A/V device or the selected room.

Figure 11 Programmable Buttons



Based on A/V Device

- Select the **System Design** view.
- Select an A/V device to display the device's **Properties** page.
- On the device's Properties page, choose **Code** or **Macro** for the button you want to program, and then choose a code or macro from the drop-down list, edit the **Help** text as needed, and then choose **Set**.



Note

Help text describes custom programming to end-users under the **House** option in any of the Navigators.

For example:

-
- Step 1** In **System Design** view, select **Disc Changer**.
- Step 2** Under **Red** button, choose **Code**.
- Step 3** From the drop-down list, choose **Subtitle**.
- Step 4** Choose the **Set** button to create a **Subtitle** button.
-

Based on Room

- Select the **Programming** view.
- Select a room in the **Device Events** pane.
- Select the **Commands** radio button in the **[Room] Events** pane.
- Use the drop-down menu to select a command or button (such as “**Blue Button**”).
- Build the script using items from the **Actions** pane to program the actions desired in the selected room when you select the command or button.

Resetting the Device to Factory Settings

To reset all settings to the factory defaults and leave the ZigBee network:

Press **Room Off, #,*1,3,4,1,3**.

Specifications

Table 2 Cisco Remote 150 Specifications

Basic Specifications	Description
Buttons	
Total Buttons	46
Quick Access Control Buttons	2
Context Sensitive Programmable Buttons	4
Transport Control Buttons	8
Remote Display	
LED Display	N/A
On-screen Display	
TV Display	On-Screen
Enclosure	
High-Impact Molded Plastic	Yes
Textured Finish	Yes
Communications	
ZigBee (802.15.4)	Yes
Environmental	
Normal operating temperature	32°F to 104°F (0°C to 40°C)
Storage temperature	-4°F to 149°F (-20°C to 65°C)
Power Requirements	
Batteries	4 AA
Dimensions	
L x W x D	6.9 in. x 2.0 in. x 0.9 in. (175 mm x 53 mm x 22 mm)
Weight (Including Batteries)	5.6 oz. (159 g)
Optional Recharging Station	
Recharging Cradle (L x W x D)	9 in. x 2.5 in. x 2.0 in. (229 mm x 64 mm x 51 mm)
Battery type (included with purchase of the recharging station)	Lithium Polymer

Table 2 Cisco Remote 150 Specifications (continued)

Recharging Station Lights	<ul style="list-style-type: none"> • Red: Remote is recharging and is not fully charged • Green: Remote is fully charged • Black: Light is off, either the charging indicator is turned off or the remote is not seated properly in the recharging station
Power supply	DC Supply 5V@1A Mini-USB Type Connector Input
Power	5VDC @ 1A Maximum
Humidity	5% - 90% Non-condensing
Storage	0°F to 100°F (-17.8°C to 37.7°C)
Operating temp	40°F to 90°F (4.4°C to 32.2°C)

Regulatory/Safety Information

To review regulatory information, go to www.cisco.com/go/smartconnectedresidential/docs.

Related Documentation

For more information about the Cisco Smart+Connected Residential products, see the following documents and websites:

Subject / Document Title	Location
General	
Product Information and Home Page	www.cisco.com/go/smartconnectedresidential
Data Sheets	http://www.cisco.com/en/US/products/ps12445/products_feature_guides_list.html
Cisco 1-Year Limited Hardware Warranty Terms	www.cisco.com/go/smartconnectedresidential/warranty
Regulatory Compliance and Safety Information for Cisco Smart+Connected Residential Products	www.cisco.com/go/smartconnectedresidential/docs
Cisco Support	www.cisco.com/cisco/web/support/
ReleaseNotes	
Release Notes for the Cisco Smart+Connected Residential Solution	www.cisco.com/go/smartconnectedresidential/docs
Installation and Configuration	
Cisco Smart+Connected Residential Installation and Configuration Guide	www.cisco.com/go/smartconnectedresidential/docs

Cisco RMS Installation and Administration

Cisco Smart+Connected Remote Management Console Administration Guide	www.cisco.com/go/smartconnectedresidential/docs
--	--

Cisco Smart+Connected Remote Management Server Installation Guide	
---	--

Hardware Reference Guides

Cisco Smart+Connected Controller 200 Reference Guide	www.cisco.com/go/smartconnectedresidential/docs
--	--

Cisco Smart+Connected Controller 250 Reference Guide	
--	--

Cisco Smart+Connected Controller 800 Reference Guide	
--	--

Cisco Smart+Connected 7" In-wall Display Reference Guide	
--	--

Cisco Smart+Connected Portable Tablet Reference Guide	
---	--

Cisco Smart+Connected I/O Extender Reference Guide	
--	--

Cisco Smart+Connected Universal Remote 150 Reference Guide	
--	--

Cisco Smart+Connected Universal Remote 250 Reference Guide	
--	--

Cisco Smart+Connected Video Door Station Reference Guide	
--	--

Accounts and Licensing

Cisco Smart+Connected Residential Licensing and Registration Guide	See your Cisco representative or partner for more information.
--	--

Other

Smart Device Compatibility and other information:	http://www.cisco.com/en/US/docs/building/smart_connected/residential/data_sheets/scr_ds_09_smartdevice.pdf
---	---

Cisco Smart+Connected Smart Device License for Real Estate Developers	
---	--

Composer Pro User Guide	http://www.control4.com/documentation/Composer_Pro_User_Guide/index.htm
-------------------------	---

**Note**

For information about third-party hardware and software, see the manufacturer's product documentation and/or website.

Warranty

A Cisco 1-year warranty applies. Go to the following URL for more information:

www.cisco.com/go/smartconnectedresidentialwarranty

Service and Support

Cisco offers a wide range of support programs to accelerate customer success. These innovative programs are delivered through a unique combination of people, processes, tools, and partners, resulting in high levels of customer satisfaction. For more information, contact your Cisco sales representative or go to www.cisco.com/cisco/web/support/index.html

This document is to be used in conjunction with the documents listed in the “[Related Documentation](#)” section.

Cisco and the Cisco logo are trademarks or registered trademarks of Cisco and/or its affiliates in the U.S. and other countries. To view a list of Cisco trademarks, go to this URL: www.cisco.com/go/trademarks. Third-party trademarks mentioned are the property of their respective owners. The use of the word partner does not imply a partnership relationship between Cisco and any other company. (1110R)

Any Internet Protocol (IP) addresses and phone numbers used in this document are not intended to be actual addresses and phone numbers. Any examples, command display output, network topology diagrams, and other figures included in the document are shown for illustrative purposes only. Any use of actual IP addresses or phone numbers in illustrative content is unintentional and coincidental.

© 2012-2013 Cisco Systems, Inc. All rights reserved.

