

CSPC 2.11 Migration Guide

March 2024

Contents

Overview 3

Prerequisites 3

Migration Scope 3

Backup and Restore 5

Backup on CSPC 2.10 5

Restore on CSPC 2.11 7

Manual configurations on 2.11 10

Observations 10

Overview

This document facilitates you on how to migrate data from CSPC 2.10 to CSPC 2.11. Inventory data is not in the scope of data migration due to varying size of customer data.

Prerequisites

Make sure CSPC 2.10 and CSPC 2.11 servers are running on the same time zone and time. This aids you to run scheduled jobs without any issues.

Migration Scope

Following settings are migrated from CSPC 2.10 to CSPC 2.11:

ID	Settings
1	Application Setting (ALL)
2	Discovery Setting (ALL)
3	DAV Setting (ALL)
4	Inventory Setting (Advance Setting, Global time out, Device prompt, Custom Dsirt Rule)
5	Advance Job Setting (ALL)
6	All custom collection profile
7	All Collection schedule
8	Custom Data Set
9	Custom Masking rule
10	Device credential set in GUI transported to new collector transparently
11	Module Credential
12	Jump Server setting and credential

13	Custom Channel Definition setting
14	Syslog GUI Setting
15	All upload Profile with schedule
16	Upload Proxy configuration
17	All entitlement
18	Additional upload certificate to connectivity (custom) from customer
19	GUI login Setting (expiry and time out)
20	All GUI user and authentication
21	GUI Tacacs authentication for GUI user access
22	SSL Certificate client access
23	Syslog Parsing rule
24	Device groups
25	Do not manage device list
26	seed file
27	Device entitlement mapping in Multi Entitlement
28	Device Display Properties Setting
29	Email setting
30	Manage Subscriber
31	Alert configuration
	OS level Settings
32	Crontab (Cron entries alone)
33	Iptables

34	routing table config
35	Addition Interface config if any(Listing alone)
36	/etc/hosts
37	/etc/resolv.conf
38	/etc/logrotate config

Following 2.10 files will be available in backup dir of 2.11

(/opt/cspc210backup/backup210/) for reference but not replaced in 2.11 due to OS level configuration difference

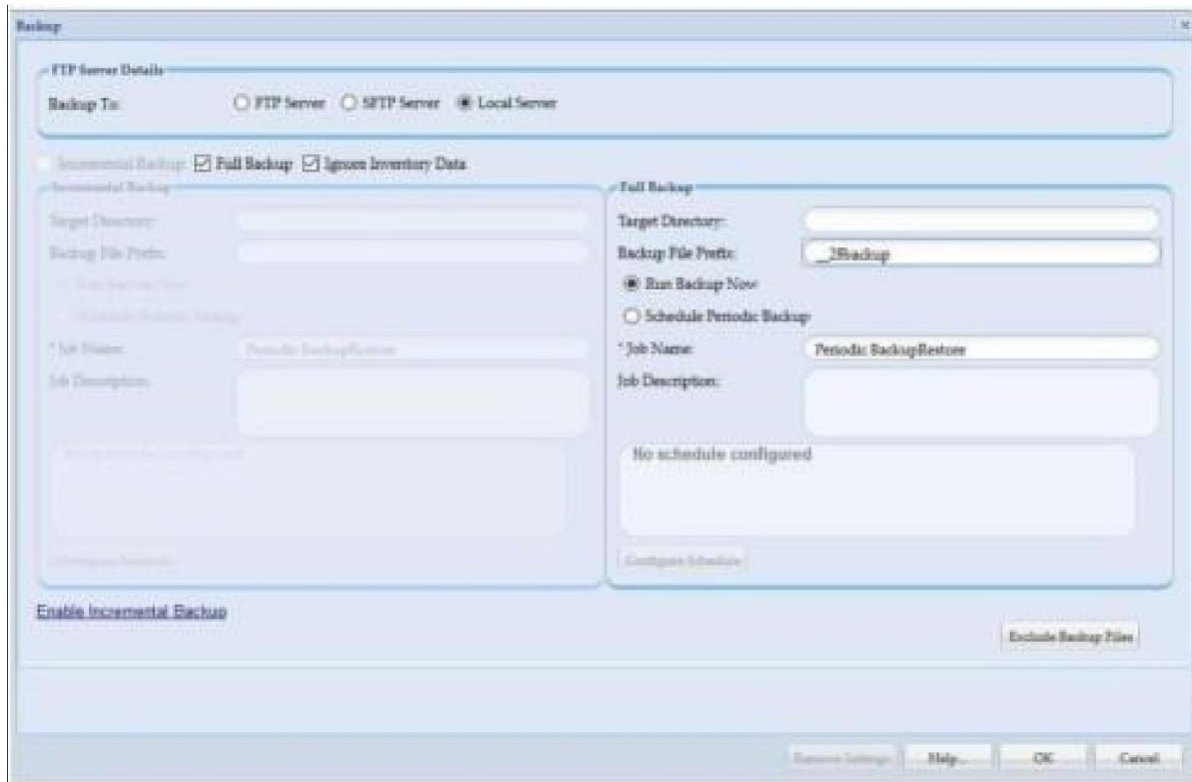
/etc/passwd
/etc/shadow
/etc/group
/etc/rsyslog.conf
/etc/ssh/sshd_config
Output of bash_history

Backup and Restore

Backup on CSPC 2.10

To perform a backup on CSPC 2.10 follow the steps:

1. Login to CSPC 2.10 GUI, Navigate to Administration > Backup. Select Backup To as Local Server, choose Full back and Ignore Inventory Data, and leave Target Directory as empty.



2. Backup file (.pbx) is generated under \$CSPCHOME/backup. Download and have it in accessible location for restoring it into CSPC 2.11 Server.

3. To take backup of CSPC 2.10 server OS settings,upload cspc210backupsript.zip into /opt directory and and execute the below commands as root user.

```
unzip cspc210backupsript.zip
```

```
cd cspc210backupsript
```

Note : Configure custom files and directories which is not part of default 2.11 migration scope (Refer Migration scope table) in files.conf and dir.conf with complete path

```
./BackupRestore.sh -b
```

4. Backup file cspc210backup.tar is generated under given directory. Default location is /opt directory. Download and have it in accessible location for restoring into CSPC 2.11 Server.

Restore on CSPC 2.11

1. Deploy CSCP 2.11 OVA image and follow the wizard until Registration settings page as shown in the figure.



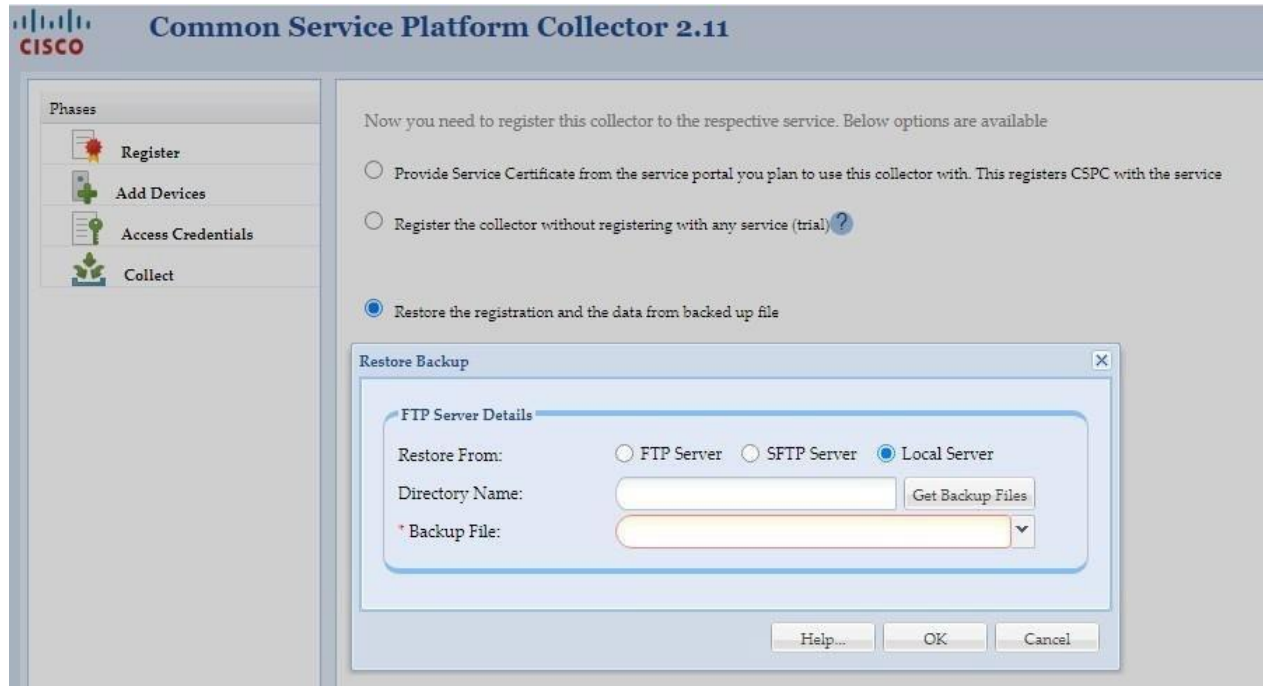
2. Copy the generated CSCP 2.10 database backup file (.pbx) to CSCP 2.11 Server \$CSPCHOME/backup location and change file permissions and ownership as show below:

```
chmod 755 $CSPCHOME/backup/*.pbx
```

```
chown -R casuser:casusers $CSPCHOME/backup/*.pbx
```

3. Execute the command and capture process ID and time stamp

```
ps -ef | grep cspc_server
```
4. Select the Restore the registration and the data from backed up file option on wizard, select Restore From as Local Server, leave Directory Name as empty, and Select CSCP 2.10 backup file (.pbx) to restore.



5. Restore will take approximately 30~40 mins.

6. After restore, perform manual service restart.

7. For all services, delete the existing entitlement and readd the entitlement.

To delete the existing entitlement:

- i) delete certificate from CSPC ui -> goto help-> view/manage certificates-> delete certificate
- ii) Open putty and login as collectorlogin and switch as root user ->

telnet localhost 42606 -> username : admin , show_db_password and collect temporary pwd -> press ctrl +] -> quit

```
cd /opt/cisco/ss/adminshell/applications/CSPC/database/mysql/bin
```

```
./mysql -u root paridb -p
```

Give the temporary pwd here

```
select appliance_id,provisional_service_name from addon_specific_data;
```

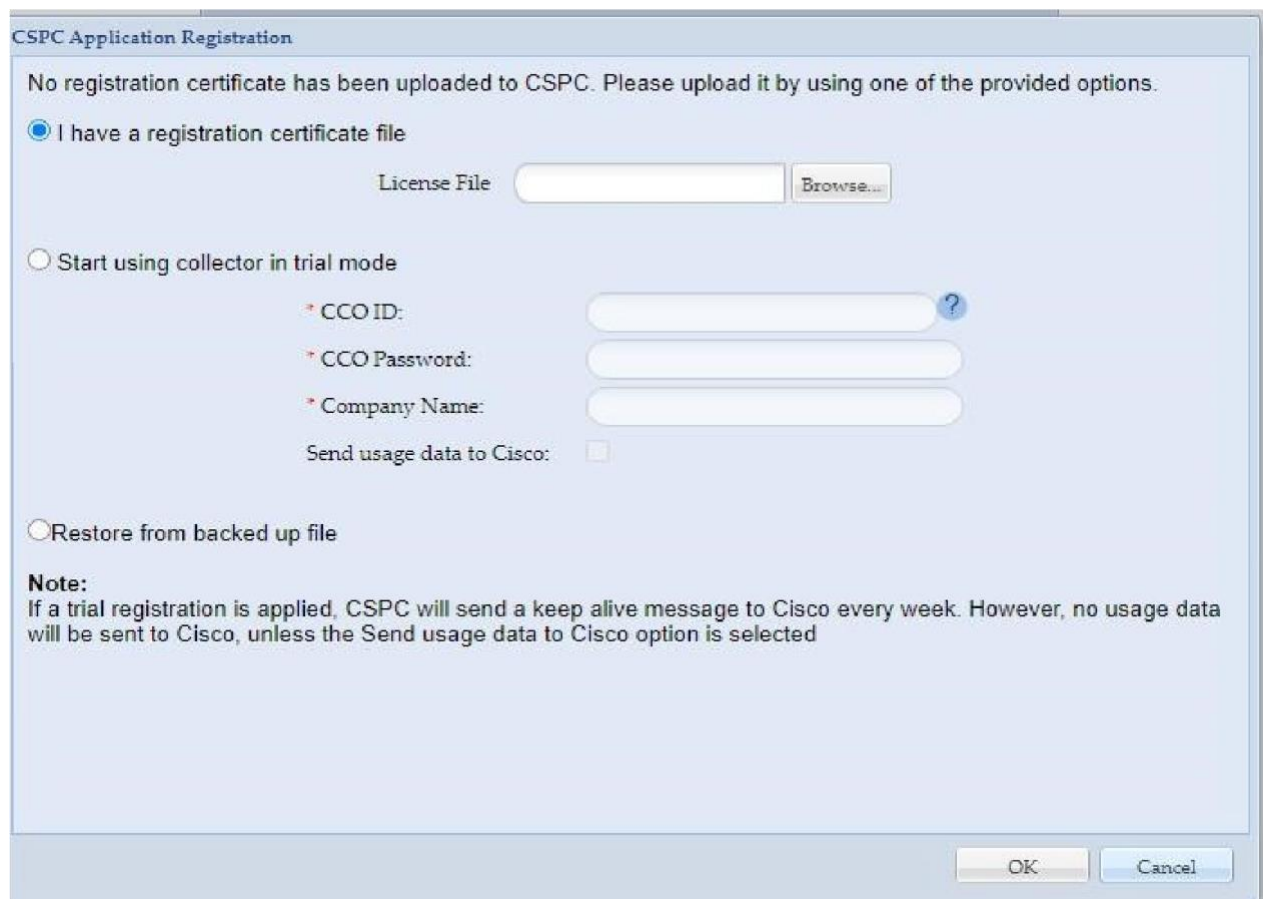
```
delete from addon_specific_data where appliance_id='CSP0001050561';
```


quit

iii) systemctl cspc stop

iv) systemctl cspc start

To read the entitlement, login to CSPC UI (<https://<cspc-server-ip>:8001/cspcgxt/#initial>), select I have a registration certificate file and click on Browse to add the entitlement.



The image shows a 'CSPC Application Registration' dialog box. At the top, it states: 'No registration certificate has been uploaded to CSPC. Please upload it by using one of the provided options.' There are three radio button options: 1. 'I have a registration certificate file' (selected): This option includes a 'License File' text box and a 'Browse...' button. 2. 'Start using collector in trial mode': This option includes three text boxes for 'CCO ID:', 'CCO Password:', and 'Company Name:', each with a red asterisk and a help icon. Below these is a checkbox for 'Send usage data to Cisco:'. 3. 'Restore from backed up file'. At the bottom, there is a 'Note:' section stating: 'If a trial registration is applied, CSPC will send a keep alive message to Cisco every week. However, no usage data will be sent to Cisco, unless the Send usage data to Cisco option is selected'. At the very bottom right are 'OK' and 'Cancel' buttons.

8. To restore CSPC 2.10 server OS settings, copy the generated cspc210backup.tar file to CSPC 2.11 Server /opt location and execute the below commands as root user.

```
tar -xvf cspc210backup. Tar
```

```
cd cspc210backup  
  
./BackupRestore.sh -r
```

Note: Server will be rebooted once restore is completed.

9. After successful restore, CSPC 2.11 collector will have old (2.10) appliance ID, GUI users password, and Security questions.

Manual configurations on 2.11

You can use manual configuration if an addon is installed on 2.10

- If NCCM addon is installed on 2.10 server, then install the same on CSPC 2.11 server.

Observations

As we ignore the inventory data while taking the backup, collection data is not display until first collection is processed.

After restoring, Backup & Restore job will show as aborted.

Americas Headquarters
Cisco Systems, Inc.
San Jose, CA

Asia Pacific Headquarters
Cisco Systems (USA) Pte. Ltd.
Singapore

Europe Headquarters
Cisco Systems International BV Amsterdam,
The Netherlands

Cisco has more than 200 offices worldwide. Addresses, phone numbers, and fax numbers are listed on the Cisco Website at <https://www.cisco.com/go/offices>.

Cisco and the Cisco logo are trademarks or registered trademarks of Cisco and/or its affiliates in the U.S. and other countries. To view a list of Cisco trademarks, go to this URL: <https://www.cisco.com/go/trademarks>. Third-party trademarks mentioned are the property of their respective owners. The use of the word partner does not imply a partnership relationship between Cisco and any other company. (1110R)

Printed in USA

03/24