

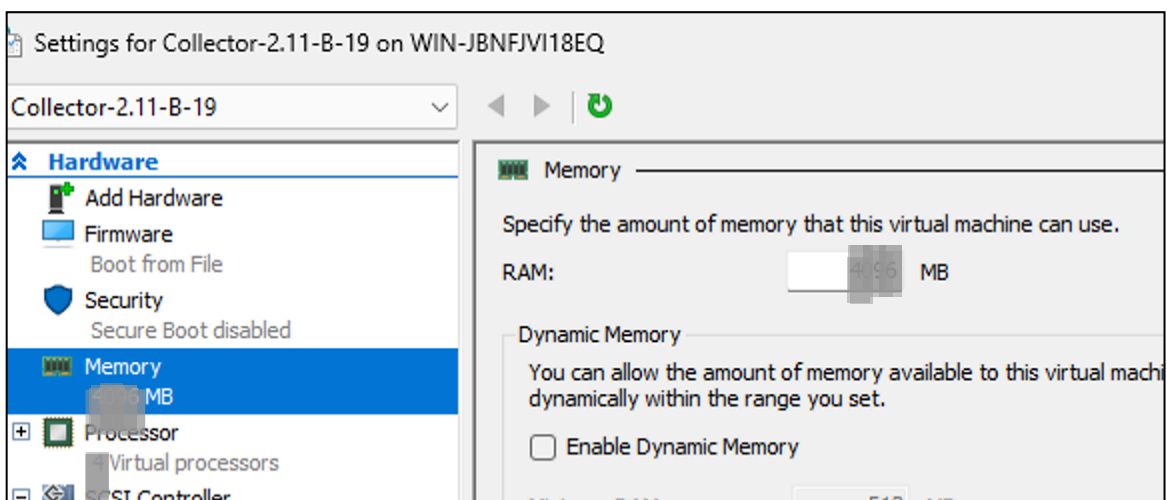
# Steps to configure Medium and Large configurations during Hyper-V image deployment

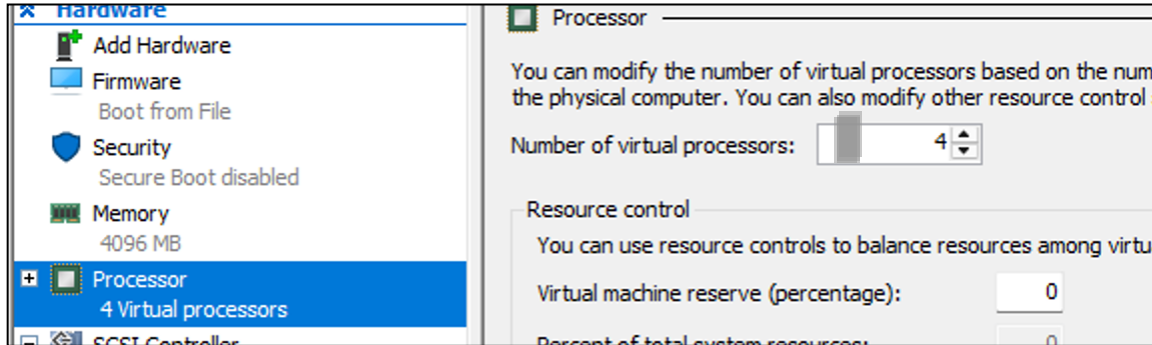
December 2025

Step 1: Open the VM setting and Change Memory and Processor to desired configuration.

For Medium : RAM -> 8192 MB  
CPU -> 8 core

For Large : RAM -> 16034 MB  
CPU -> 16 core





## Step 2: Add the Additional hard disk for the desired configuration.

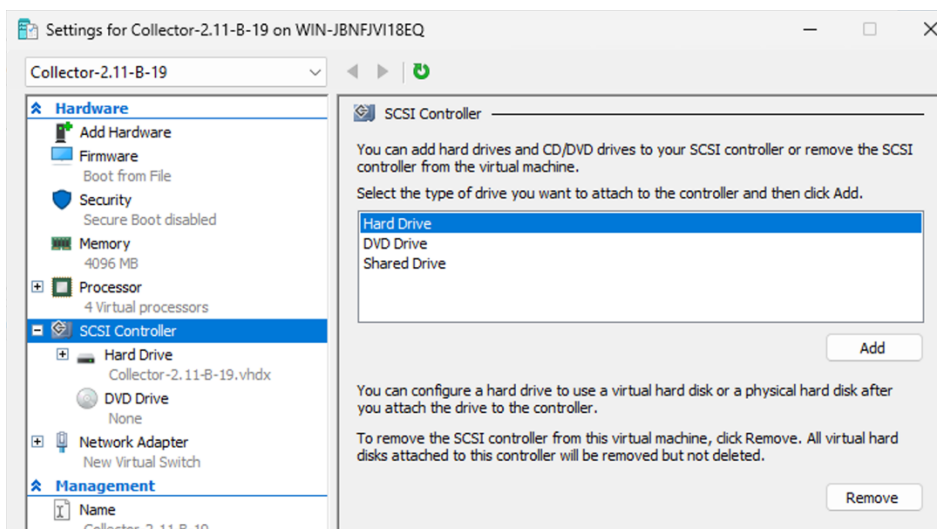
Additional hard disk size:

Medium: 300GB

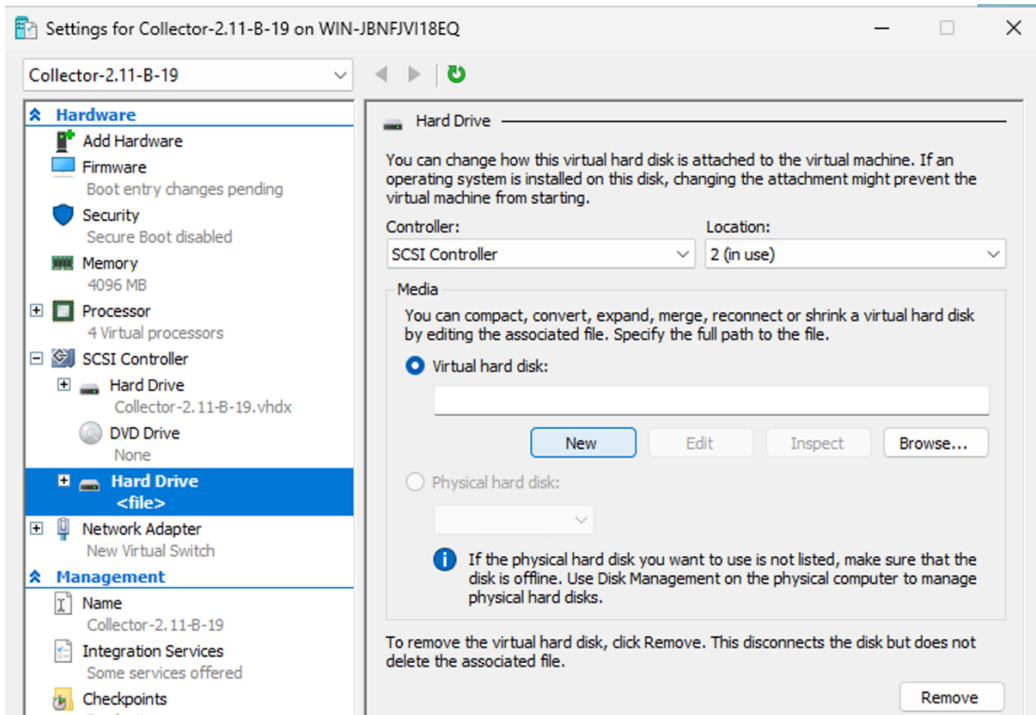
Large: 800 GB

Steps for Adding additional Hard disk:

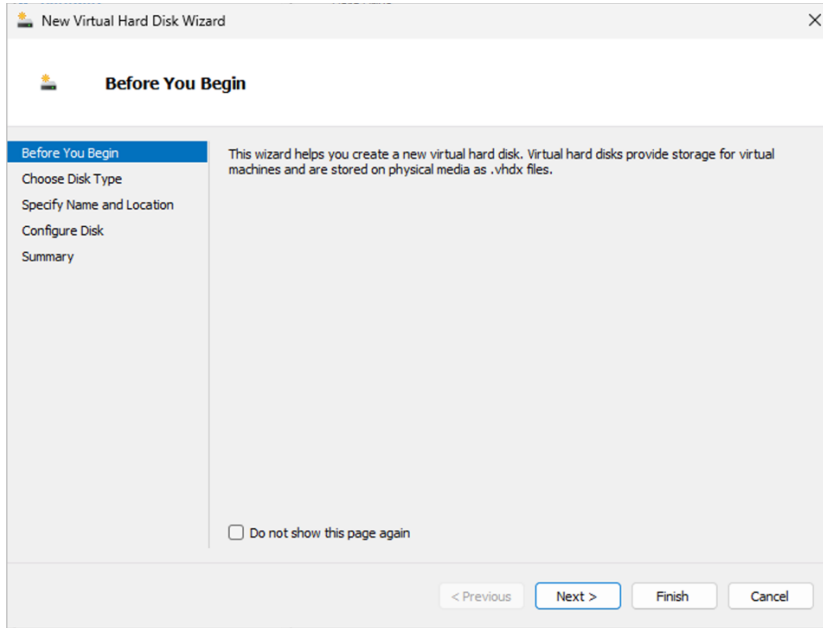
1. Select existing "SCSI Controller" -> select "Hard Drive" -> click Add.



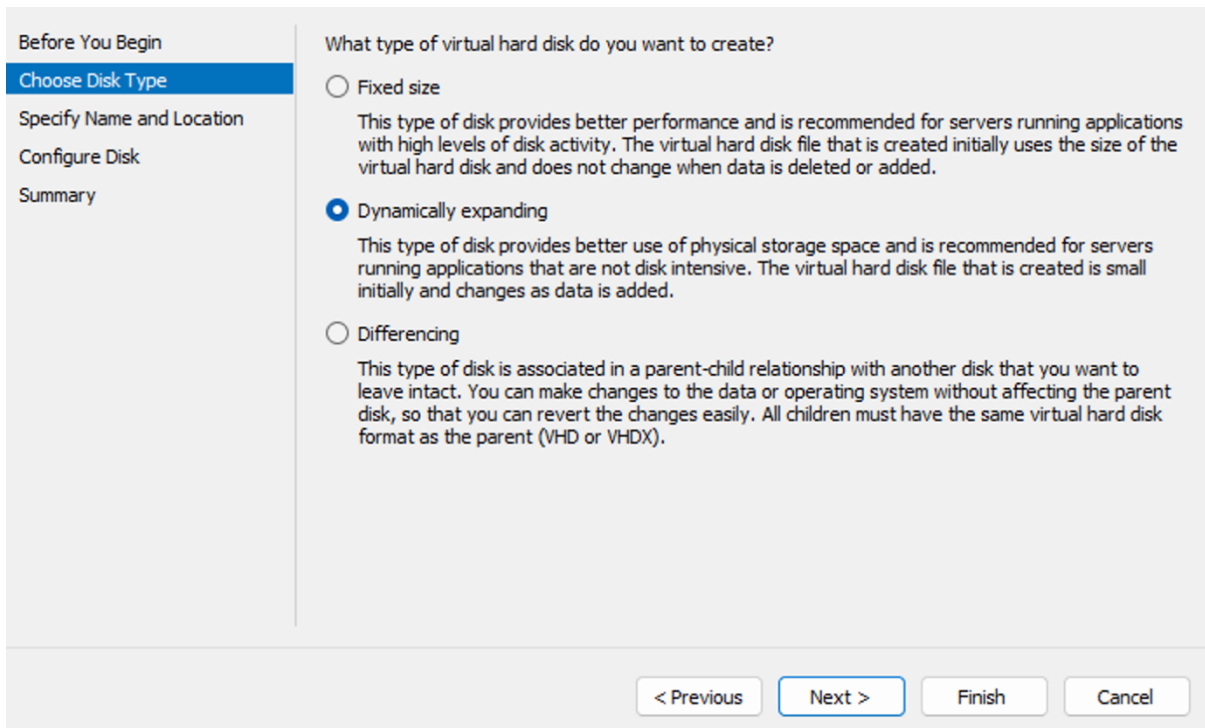
2. On new “Hard Drive” window click “New”



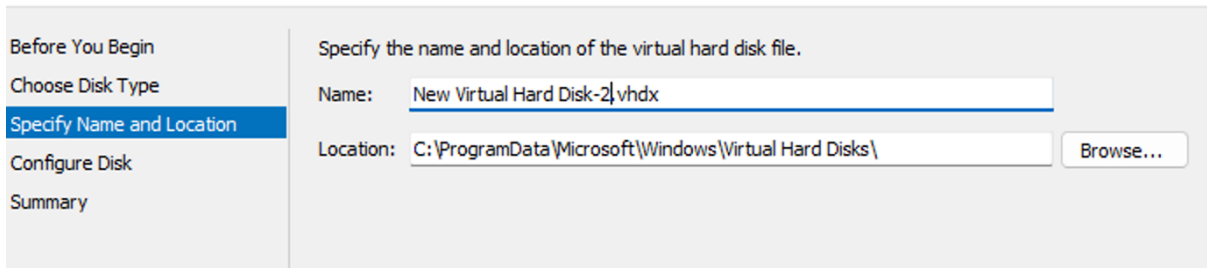
3. On “New Virtual Hard Disk Wizard” click “next”



#### 4. Select “Dynamically expanding” and click next



5. Provide name of the new virtual Hard disk also can change the location of this hard disk, make sure it is in same location of VM deployed.



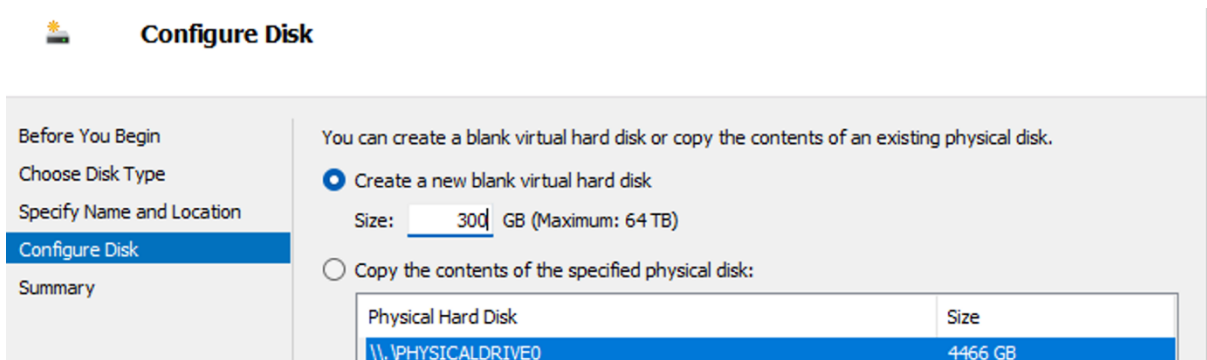
Before You Begin  
Choose Disk Type  
**Specify Name and Location**  
Configure Disk  
Summary


Specify the name and location of the virtual hard disk file.

Name:

Location:

6. Select “Create a new Blank virtual hard disk” and provide the Hard disk size as desired for medium/Large.



 **Configure Disk**

Before You Begin  
Choose Disk Type  
Specify Name and Location  
**Configure Disk**  
Summary

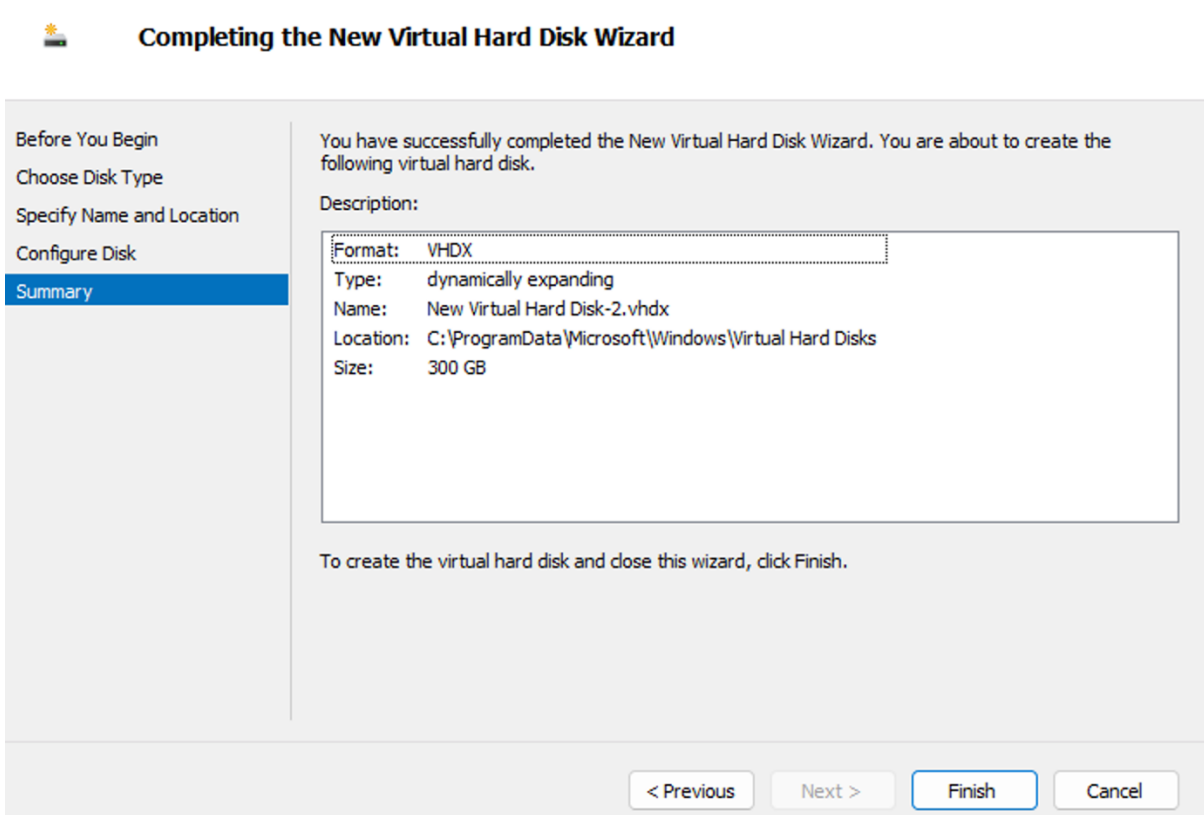
You can create a blank virtual hard disk or copy the contents of an existing physical disk.

Create a new blank virtual hard disk  
Size:  GB (Maximum: 64 TB)

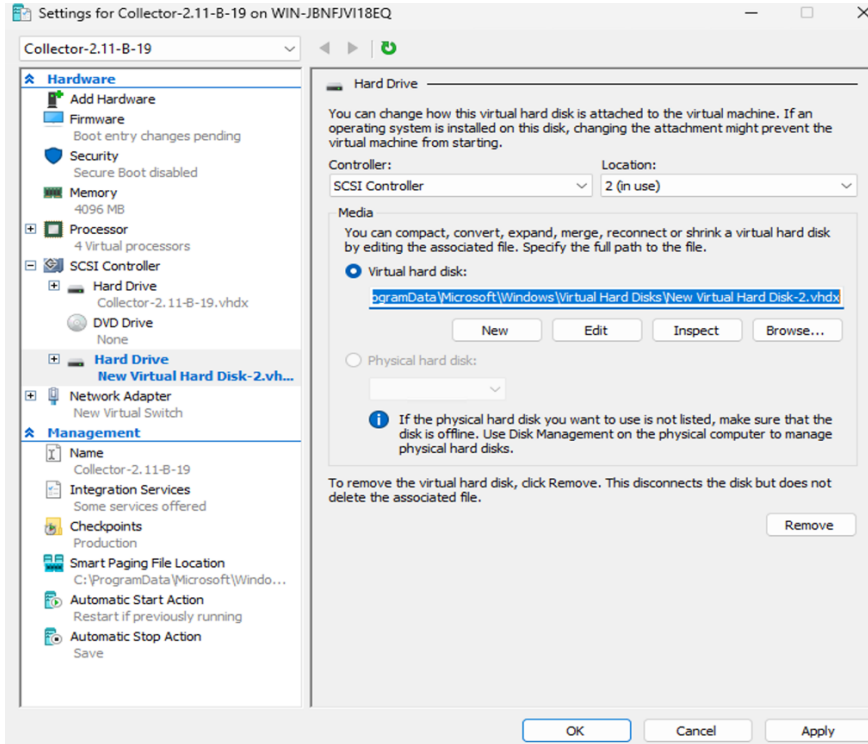
Copy the contents of the specified physical disk:

Physical Hard Disk	Size
\\.\PHYSICALDRIVE0	4466 GB

7. Review details and Click “Finish”



8. Click “OK” and power on the VM.



### Step 3: Power-on VM set all IP and passwords configured.

login as root user and run below command to automatically expand the hard disk within VM.

Command: `/opt/cisco/ss/adminshell/collector/resize_fs.sh`