

Connecting Cisco Unified Customer Voice Portal with Sonus Session Border Controller

Nov 11, 2013

Overview

This note summarizes the interoperability support for the Sonus Session Border Controller when deployed in place of Cisco Unified Border element (CUBE) for call delivery through SIP trunks to Cisco Unified Customer Voice Portal (CVP) in a Cisco Unified Contact Center Enterprise (CCE) solution.

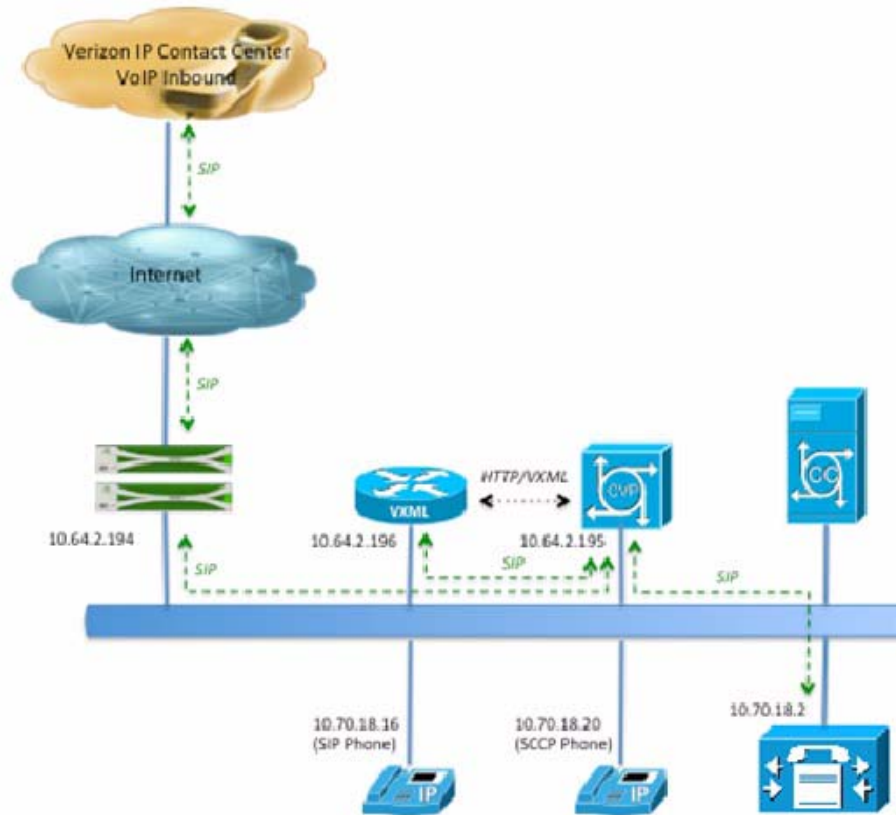
This document serves as guidance for integration. However, it does not guarantee interoperability for every use case. Under the same conditions, this document may also be leveraged with different component versions and different service providers. As in any third-party interoperability, Cisco provides support for its own components, but may not be able to fully assist in end-to-end troubleshooting or provide timely diagnostics and fixes.

Versions of products used in testing

- IOS 15.1.4M5 (VXML Browser)
- Unified Contact Center Enterprise 9.0 (UCCE)
- Unified Customer Voice Portal 9.0 (CVP)
- Unified Communications Manager 9.0 (CUCM)
- Phone firmware 41.9
- Sonus SBC 5100 Session Border Controller

Network Topology

Figure 1 Basic Call Flow



Tested Features

- G.711ulaw, G.711alaw and G.729 (no Annex B) codecs
- DNIS and ANI presentation
- SIP/TCP on Sonus internal interface, and SIP/UDP on external interface
- CVP-based Queuing
- CVP applications with DTMF
- CVP-based intra-site transfers using reINVITE
- CUCM-based intra-site transfers and conferences
- Sonus midcall codec negotiation
- CUCM midcall codec negotiation (with transcoder insertion where needed)
- Sonus converting SIP INFO messages from CVP to RFC2833 tones (for DTMF-based transfers)



- REFER transfers with Sonus in REFER pass-through mode
- REFER transfers with Sonus in REFER consume mode
- SIP 302 Redirect responses with Sonus in consume mode
- CVP-based Redirect on No Answer
- Call hold
- Sonus high availability

Features not Supported

- SIP over TLS and SRTP
- REFER with Replaces
- CVP using H.323
- Sonus performing protocol conversion (H.323 to SIP)
- The features listed above are not a result of limitations in the Sonus platform (they are also present when the CUBE is used). However, some CCE and CVP features rely on specific CUBE capabilities and are not available when Sonus is used. Example:
 - Call survivability (survivability.tcl script)
 - Courtesy Callback
 - Network Trunk Group Utilization and Reporting
 - CVP controlled outbound calls (custom application)
 - Outbound Option with SIP Call Progress Analysis
 - Queue at the edge (using CVP SendToOriginator feature)



Note

The feature not supported list is subject to change.

- Sonus configured as a SIP proxy (example, instead of Cisco Unified SIP Proxy, or CUSP) for messages between Cisco components (supported configurations use Sonus as an ingress or egress border element).

Caveats

- Sonus does not generate a Cisco-Guid header for end-to-end call tracking.
- When SIP over TCP is used between Sonus and CVP, a very limited number of calls may be dropped if Sonus switches over through its high-availability feature. For each CVP server used, exactly one call may be dropped after the switchover occurs (all other calls in progress at the given CVP server stay active with stateful signaling and media). The dropped call is the first that sends a SIP message to Sonus after the switch over. This behavior is not experienced when SIP over UDP is used.
- When REFER messages are sent to the Sonus SBC, the call session to CVP is not immediately disconnected. Rather, the CVP port stays in use until either the transferred call is terminated, 60 seconds elapse after the REFER is sent, or the service provider sends a BYE in CVP's direction (whatever happens first). This longer utilization impacts the CVP capacity and license sizing. This



behavior is not experienced when CUBE is used, as CUBE itself disconnects the call as soon as REFER request is accepted on the incoming SIP trunk. There are no issues when Sonus is used in REFER consume mode.

- There may be some scenarios CVP should send busy and ring-no-answer notifications to Sonus. In such cases the Remote-Party-ID header must be used and manipulated to include "--CVP" at the end of the display name.
- CVP Standalone Model has not been tested.
- Interoperability with third party telephony systems (PBXs, contact center systems, voice portals, etc.) and Sonus has not been tested.
- Advanced features such as REFER and DTMF transfers require the releases tested as part of this application note or higher.
- **Support Caveats:**
 - Cisco's ability to diagnose interoperability issues and test fixes is restricted to "best effort" as Cisco's support engineers are not equipped with diagnostic tools for the third party equipment. Issues found to be solely related to third party components will not be supported by Cisco. Root cause analysis may not always be possible.
 - Cisco will support its products to the extent that their interfaces and capacity characteristics perform as designed. Instabilities and interoperability issues that arise from different product behavior expectations may not be addressed by Cisco. Upgrades to Cisco or third-party components may introduce different and undesired behaviors. In order to minimize production issues, call flows should be thoroughly tested in a lab environment with the desired product version combinations, including patches.
- Not all SIP service providers support advanced features such as REFER, 302 Redirect Messages, DTMF-based take-back-and-transfer, or data transport (UUI, GTD, NSS, etc). Please verify before planning on deploying these capabilities.

Configurations

This section provides information on configuration that were used to test the Sonus Session Border Control with the Unified Cisco Voice Portal.

```
configure
#####
# set system admin
#####
set system admin "sonusSBC01" location "[location name]" contact "[contact name]" cliIdleTimeout
"30" localAuthenticationEnabled "true" externalAuthenticationEnabled "false"
standbyServerState "enabled" utilMonitorStatsInterval "15" utilMonitorStatsNumOfPastInterval
"4" managementIpVersion "ipv4" auditLogState "enabled" dspMismatchAction
"preserveRedundancy" cliSetWarningSupport "enabled"
commit

#####
# system intervalStatistics
#####
set system intervalStatistics timeInterval "15" numOfPastIntervals "4"
```



```
commit

#####
# oam accounting
#####
set oam accounting radius accountingAdmin state "disabled" nasIpAddress "10.64.3.53"
commit

set oam accounting admin generationMode "origination" intermediateAcctState "disabled"
intermediateAcctInterval "60" secondStageInheritFirstStage "false"
populateNonPortedLnpNumbers "true" intermediateAcctMode "interval"
intermediateLongDurGenTime "00:00:00.0" startAcctState "enabled" intermediateTrapState
"disabled" populateRemoteGsxCdrInfoState "disabled" earlyAttemptState "disabled"
intermediateLongDurThreshold "24" sendEgressCdrInfoOnReceipt "false"
populateIpTgFarEndSwitchType "disabled" maxRecordSequenceNum "uint16"

commit

#####
# system congestion
#####
set system congestion mode "adaptive"
commit

set system congestion policer burstSize "50"
commit

set system congestion adaptive MCLevel "mc2"
commit

set system congestion levelMC3 mode "outOfService" overloadProfileName "defaultMC3"
commit

set system congestion levelMC2 mode "outOfService" overloadProfileName "defaultMC2"
commit

set system congestion levelMC1 mode "outOfService" overloadProfileName "defaultMC1"
commit

#####
# system media media
#####
set system media mediaPortRange baseUdpPort "16384" maxUdpPort "32768"
commit

#####
# profiles dtmfTrigger
#####
set profiles dtmfTrigger "ingress"
commit

set profiles dtmfTrigger "egress"
commit
```



```
#####
# system security pki
#####

#####
# profiles security
#####

#####
# system policyServer
#####
set system policyServer globalConfig reconnectTimeout "10" switchOverMode "automatic"
  congestionControl "disabled"
commit
set system policyServer localServer "PSX_LOCAL_SERVER" state "enabled" mode "active" action
  "dryUp" transactionTimer "2500" keepAliveTimer "5" retryTimer "2500" retries "1"
commit

#####
# system dsp
#####
set system dspPad jitterEvalPeriod "1000" jitterMinOccThsh "20" rtpDtmfRelay "100" sidMinTime
  "200" sidMaxTime "2000" sidHangoverTime "300" sidMinNoiseFloor "60" sidMaxNoiseFloor "48"
  comfOrtEnergy "56" universalCompressionThreshold "90" universalCompressionThresholdState
  "enabled" playoutTimeseriesPeriod "20000" playoutTimeseriesThreshold0 "0"
  playoutTimeseriesThreshold1 "200" playoutTimeseriesThreshold2 "600" toneThreshold "90"
  toneThresholdState "enabled" audioTxDuring2833 "enabled"
commit

#####
# system mediaProfile
#####
set system mediaProfile compression "90" tone "10"
commit

#####
# profiles system ipPolicingAlarmProfile
#####
set profiles system ipPolicingAlarmProfile "defaultSystemMajor" index "1" state "enabled"
  badEthernetIpHeaderSetThreshold "100" badEthernetIpHeaderClearThreshold "20"
  badEthernetIpHeaderSetDuration "3" badEthernetIpHeaderClearDuration "3" arpSetThreshold
  "100" arpClearThreshold "20" arpSetDuration "3" arpClearDuration "3" uFlowSetThreshold "100"
  uFlowClearThreshold "20" uFlowSetDuration "3" uFlowClearDuration "3" aclSetThreshold "100"
  aclClearThreshold "20" aclSetDuration "3" aclClearDuration "3" aggregateSetThreshold "100"
  aggregateClearThreshold "20" aggregateSetDuration "3" aggregateClearDuration "3"
  ipSecDecryptSetThreshold "100" ipSecDecryptClearThreshold "20" ipSecDecryptSetDuration "3"
  ipSecDecryptClearDuration "3" mediaSetThreshold "100" mediaClearThreshold "20"
  mediaSetDuration "3" mediaClearDuration "3" rogueMediaSetThreshold "100"
  rogueMediaClearThreshold "20" rogueMediaSetDuration "3" rogueMediaClearDuration "3"
commit
```



```
set profiles system ipPolicingAlarmProfile "defaultSystemMinor" index "2" state "enabled"
badEthernetIpHeaderSetThreshold "20" badEthernetIpHeaderClearThreshold "10"
badEthernetIpHeaderSetDuration "3" badEthernetIpHeaderClearDuration "3" arpSetThreshold "20"
arpClearThreshold "10" arpSetDuration "3" arpClearDuration "3" uFlowSetThreshold "20"
uFlowClearThreshold "10" uFlowSetDuration "3" uFlowClearDuration "3" aclSetThreshold "20"
aclClearThreshold "10" aclSetDuration "3" aclClearDuration "3" aggregateSetThreshold "20"
aggregateClearThreshold "10" aggregateSetDuration "3" aggregateClearDuration "3"
ipSecDecryptSetThreshold "20" ipSecDecryptClearThreshold "10" ipSecDecryptSetDuration "3"
ipSecDecryptClearDuration "3" mediaSetThreshold "20" mediaClearThreshold "10"
mediaSetDuration "3" mediaClearDuration "3" rogueMediaSetThreshold "20"
rogueMediaClearThreshold "10" rogueMediaSetDuration "3" rogueMediaClearDuration "3"

commit

#####

# global carrier
#####

set global carrier "0000"

commit

#####

# global signaling
#####

set global signaling sipPeerOverloadControl samplingPeriod "2" discardPeriod "2" stepDownGain
"100" rejectThreshold "1"

commit

set global signaling sipSigControls registrarSupportContactParam "enabled" maxPduSizeValue
"pdusize15kb"

commit

#####

# ipInterfaceGroup
#####

set addressContext "default" ipInterfaceGroup "EXTERNAL_IPIG" ipsec "disabled"

commit

set addressContext "default" ipInterfaceGroup "INTERNAL_IPIG" ipsec "disabled"

commit

set addressContext "default" ipInterfaceGroup "EXTERNAL_IPIG" ipInterface "IPIF0_3012" ceName
"sonusSBC01a" portName "pkt0" ipAddress "[external IP address 1]" prefix "16" mode
"outOfService" action "dryUp" dryupTimeout "60" state "disabled" bwContingency "0" vlanTag
"3012" bandwidth "0"

commit

set addressContext "default" ipInterfaceGroup "EXTERNAL_IPIG" ipInterface "IPIF0_3012" mode
"inService" state "enabled"

commit

set addressContext "default" ipInterfaceGroup "INTERNAL_IPIG" ipInterface "IPIF1_4093" ceName
"sonusSBC01a" portName "pkt1" ipAddress "10.64.2.194" prefix "16" mode "outOfService" action
"dryUp" dryupTimeout "60" state "disabled" bwContingency "0" vlanTag "4093" bandwidth "0"

commit

set addressContext "default" ipInterfaceGroup "INTERNAL_IPIG" ipInterface "IPIF1_4093" mode
"inService" state "enabled"

commit
```



```
set addressContext "default" ipAccessControlList rule "EXTERNAL_ICMP" precedence "59800" protocol
"icmp" ipInterfaceGroup "EXTERNAL_IPIG" sourceIpAddress "0.0.0.0" sourceAddressPrefixLength
"0" destinationIpAddress "0.0.0.0" destinationAddressPrefixLength "0" sourcePort "any"
destinationPort "any" action "accept" fillRate "10" bucketSize "10" state "enabled"

commit

set addressContext "default" ipAccessControlList rule "EXTERNAL_DENY" precedence "60000" protocol
"any" ipInterfaceGroup "EXTERNAL_IPIG" sourceIpAddress "0.0.0.0" sourceAddressPrefixLength
"0" destinationIpAddress "0.0.0.0" destinationAddressPrefixLength "0" sourcePort "any"
destinationPort "any" action "discard" fillRate "unlimited" bucketSize "unlimited" state
"enabled"

commit

set addressContext "default" ipAccessControlList rule "CARRIER1" precedence "1101" protocol "udp"
ipInterfaceGroup "EXTERNAL_IPIG" sourceIpAddress "[external IP address 2]"
sourceAddressPrefixLength "32" destinationIpAddress "0.0.0.0" destinationAddressPrefixLength
"0" sourcePort "any" destinationPort "5060" action "accept" fillRate "unlimited" bucketSize
"unlimited" state "enabled"

commit

set addressContext "default" ipAccessControlList rule "ACCESS_1" precedence "1100" protocol "udp"
ipInterfaceGroup "INTERNAL_IPIG" sourceIpAddress "10.70.18.2" sourceAddressPrefixLength "32"
destinationIpAddress "0.0.0.0" destinationAddressPrefixLength "0" sourcePort "any"
destinationPort "5060" action "accept" fillRate "unlimited" bucketSize "unlimited" state
"enabled"

commit

#####
# ipInterfaceGroup, ipInterface ,portName
#####

#####
# ipInterfaceGroup, ipInterface ,ipsec
#####

#####
# ipInterfaceGroup, ipInterface ,mode,state,enable
#####

#####
# zone, id
#####
set addressContext "default" zone "defaultSigZone" id "1"
commit
set addressContext "default" zone "EXTERNAL_ZONE" id "3" remoteDeviceType "none"
commit
set addressContext "default" zone "INTERNAL_ZONE" id "2" remoteDeviceType "none"
commit

#####
# zone,SigPort
#####
```




```
set addressContext "default" zone "EXTERNAL_ZONE" sipSigPort "3" ipInterfaceGroupName
"EXTERNAL_IPIG" ipAddressV4 "[external IP address 1]" portNumber "5060" mode "outOfService"
state "disabled" recorder "disabled" tcpConnectTimeout "5" dscpValue "26" tlsProfileName
"defaultTlsProfile" transportProtocolsAllowed "sip-udp" sctpProfileName "defaultSctpProfile"

commit

set addressContext "default" zone "EXTERNAL_ZONE" sipSigPort "3" mode "inService" state "enabled"

commit

set addressContext "default" zone "INTERNAL_ZONE" sipSigPort "2" ipInterfaceGroupName
"INTERNAL_IPIG" ipAddressV4 "10.64.2.194" portNumber "5060" mode "outOfService" state
"disabled" recorder "disabled" tcpConnectTimeout "5" dscpValue "26" tlsProfileName
"defaultTlsProfile" transportProtocolsAllowed "sip-udp sip-tcp" sctpProfileName
"defaultSctpProfile"

commit

set addressContext "default" zone "INTERNAL_ZONE" sipSigPort "2" mode "inService" state "enabled"

commit

#####
# staticRoute
#####

set addressContext "default" staticRoute "[external IP address 2]" "32" "[external IP address 3]"
"EXTERNAL_IPIG" "IPIF0_3012" preference "100"

commit

set addressContext "default" staticRoute "0.0.0.0" "0" "[external IP address 3]" "EXTERNAL_IPIG"
"IPIF0_3012" preference "100"

commit

set addressContext "default" staticRoute "0.0.0.0" "0" "10.64.1.1" "INTERNAL_IPIG" "IPIF1_4093"
preference "100"

commit

#####
# system mgmtStaticRoute
#####

set system mgmtStaticRoute "0.0.0.0" "0" "10.64.1.1" "mgmtGroup" "mgmtIntf3" preference "10"

commit

set system mgmtStaticRoute "0.0.0.0" "0" "10.64.1.1" "mgmtGroup" "mgmtIntf2" preference "10"

commit

set system mgmtStaticRoute "0.0.0.0" "0" "10.64.1.1" "mgmtGroup" "mgmtIntf4" preference "10"

commit

set system mgmtStaticRoute "0.0.0.0" "0" "10.64.1.1" "mgmtGroup" "mgmtIntf1" preference "10"

commit

#####
# ipsec peer
#####

#####
# ipsec spd
```



```
#####

#####

# linkDetectionGroup
#####

set addressContext "default" linkDetectionGroup "LDG_CE0-OUTSIDE" ceName "sonusSBC01a" type "ip"
  threshold "1" verifyTimer "1000" responseTimer "500" reattemptTimer "300" retries "2" state
  "enabled"

commit

set addressContext "default" linkDetectionGroup "LDG_CE1-OUTSIDE" ceName "sonusSBC01b" type "ip"
  threshold "1" verifyTimer "1000" responseTimer "500" reattemptTimer "300" retries "2" state
  "enabled"

commit

set addressContext "default" linkDetectionGroup "LDG_CE0-INSIDE" ceName "sonusSBC01a" type "ip"
  threshold "1" verifyTimer "1000" responseTimer "500" reattemptTimer "300" retries "2" state
  "enabled"

commit

set addressContext "default" linkDetectionGroup "LDG_CE1-INSIDE" ceName "sonusSBC01b" type "ip"
  threshold "1" verifyTimer "1000" responseTimer "500" reattemptTimer "300" retries "2" state
  "enabled"

commit

set addressContext "default" linkDetectionGroup "LDG_CE0-OUTSIDE" linkMonitor "LM_CE0P0"
  interfaceGroup "EXTERNAL_IPIG" interface "IPIF0_3012" destination "[external IP address 3]"
  verifyTimer "1000" responseTimer "500" reattemptTimer "300" state "enabled"

commit

set addressContext "default" linkDetectionGroup "LDG_CE0-INSIDE" linkMonitor "LM_CE0P1"
  interfaceGroup "INTERNAL_IPIG" interface "IPIF1_4093" destination "10.64.1.1" verifyTimer
  "1000" responseTimer "500" reattemptTimer "300" state "enabled"

commit

set addressContext "default" linkDetectionGroup "LDG_CE1-OUTSIDE" linkMonitor "LM_CE1P0"
  interfaceGroup "EXTERNAL_IPIG" interface "IPIF0_3012" destination "[external IP address 3]"
  verifyTimer "1000" responseTimer "500" reattemptTimer "300" state "enabled"

commit

set addressContext "default" linkDetectionGroup "LDG_CE1-INSIDE" linkMonitor "LM_CE1P1"
  interfaceGroup "INTERNAL_IPIG" interface "IPIF1_4093" destination "10.64.1.1" verifyTimer
  "1000" responseTimer "500" reattemptTimer "300" state "enabled"

commit

#####

# profiles media codecEntry
#####

set profiles media codecEntry "G729ab_20ms_2833_T38" codec "g729ab" packetSize "20"
  preferredRtpPayloadType "128"

commit

set profiles media codecEntry "G729ab_20ms_2833" codec "g729ab" packetSize "20"
  preferredRtpPayloadType "128"

commit

set profiles media codecEntry "G711u_20ms_2833_T38" codec "g711" packetSize "20"
  preferredRtpPayloadType "128" law "ULaw"

commit

set profiles media codecEntry "G711a_20ms_2833" codec "g711" packetSize "20"
  preferredRtpPayloadType "128" law "ALaw"
```



```
commit

set profiles media codecEntry "G722_20ms_2833_T38" codec "g722" codingRate "64" packetSize "20"
  preferredRtpPayloadType "128"

commit

set profiles media codecEntry "G711u_20ms_2833" codec "g711" packetSize "20"
  preferredRtpPayloadType "128" law "ULaw"

commit

set profiles media codecEntry "G729ab_20ms_INFO" codec "g729ab" packetSize "20"
  preferredRtpPayloadType "128"

commit

set profiles media codecEntry "G722_20ms_2833" codec "g722" codingRate "64" packetSize "20"
  preferredRtpPayloadType "128"

commit

set profiles media codecEntry "G711a_20ms_2833_T38" codec "g711" packetSize "20"
  preferredRtpPayloadType "128" law "ALaw"

commit

set profiles media codecEntry "G722_20ms_2833_T38" dtmf relay "rfc2833" removeDigits "enable"

commit

set profiles media codecEntry "G722_20ms_2833" dtmf relay "rfc2833" removeDigits "enable"

commit

set profiles media codecEntry "G711a_20ms_2833_T38" dtmf relay "rfc2833" removeDigits "enable"

commit

set profiles media codecEntry "G711u_20ms_2833_T38" dtmf relay "rfc2833" removeDigits "enable"

commit

set profiles media codecEntry "G729ab_20ms_2833" dtmf relay "rfc2833" removeDigits "enable"

commit

set profiles media codecEntry "G711a_20ms_2833" dtmf relay "rfc2833" removeDigits "enable"

commit

set profiles media codecEntry "G729ab_20ms_INFO" dtmf relay "outOfBand" removeDigits "enable"

commit

set profiles media codecEntry "G711u_20ms_2833" dtmf relay "rfc2833" removeDigits "enable"

commit

set profiles media codecEntry "G729ab_20ms_2833_T38" dtmf relay "rfc2833" removeDigits "enable"

commit

set profiles media codecEntry "G729ab_20ms_INFO" modem failureHandling "continue" toneTreatment
  "none"

commit

set profiles media codecEntry "G729ab_20ms_2833" modem failureHandling "continue" toneTreatment
  "none"

commit

set profiles media codecEntry "G711u_20ms_2833_T38" modem failureHandling "continue"
  toneTreatment "fallbackToG711"

commit

set profiles media codecEntry "G722_20ms_2833_T38" modem failureHandling "continue" toneTreatment
  "fallbackToG711"

commit
```



```
set profiles media codecEntry "G711a_20ms_2833" modem failureHandling "continue" toneTreatment
"none"

commit

set profiles media codecEntry "G711u_20ms_2833" modem failureHandling "continue" toneTreatment
"none"

commit

set profiles media codecEntry "G722_20ms_2833" modem failureHandling "continue" toneTreatment
"none"

commit

set profiles media codecEntry "G729ab_20ms_2833_T38" modem failureHandling "continue"
toneTreatment "fallbackToG711"

commit

set profiles media codecEntry "G711a_20ms_2833_T38" modem failureHandling "continue"
toneTreatment "fallbackToG711"

commit

set profiles media codecEntry "G711u_20ms_2833" fax failureHandling "continue" toneTreatment
"none"

commit

set profiles media codecEntry "G722_20ms_2833" fax failureHandling "continue" toneTreatment
"none"

commit

set profiles media codecEntry "G711a_20ms_2833" fax failureHandling "continue" toneTreatment
"none"

commit

set profiles media codecEntry "G729ab_20ms_INFO" fax failureHandling "continue" toneTreatment
"none"

commit

set profiles media codecEntry "G729ab_20ms_2833_T38" fax failureHandling "continue" toneTreatment
"faxRelayOrFallbackToG711"

commit

set profiles media codecEntry "G711u_20ms_2833_T38" fax failureHandling "continue" toneTreatment
"faxRelayOrFallbackToG711"

commit

set profiles media codecEntry "G711a_20ms_2833_T38" fax failureHandling "continue" toneTreatment
"faxRelayOrFallbackToG711"

commit

set profiles media codecEntry "G729ab_20ms_2833" fax failureHandling "continue" toneTreatment
"none"

commit

set profiles media codecEntry "G722_20ms_2833_T38" fax failureHandling "continue" toneTreatment
"faxRelayOrFallbackToG711"

commit

#####
# profiles media packetServiceProfile
#####
set profiles media packetServiceProfile "CARRIER1_TRAN_FREE_PSP" silenceFactor "40" typeOfService
"184" voiceInitialPayloadBufferDelay "10" peerAbsenceAction "none" aallPayloadSize "47"
preferredRtpPayloadTypeForDtmfRelay "100" mediaPacketCos "0" honorRemotePrecedence "disable"
sendRoutePSPPrecedence "disable"

commit
```



```
set profiles media packetServiceProfile "PBX1_TRAN_FRE_PSP" silenceFactor "40" typeOfService
"184" voiceInitialPlayoutBufferDelay "10" peerAbsenceAction "none" aallPayloadSize "47"
preferredRtpPayloadTypeForDtmfRelay "101" mediaPacketCos "0" honorRemotePrecedence "disable"
sendRoutePSPPrecedence "disable"

commit

set profiles media packetServiceProfile "CARRIER1_TRANSCODE_PSP" silenceFactor "40" typeOfService
"184" voiceInitialPlayoutBufferDelay "10" peerAbsenceAction "none" aallPayloadSize "47"
preferredRtpPayloadTypeForDtmfRelay "100" mediaPacketCos "0" honorRemotePrecedence "disable"
sendRoutePSPPrecedence "disable"

commit

set profiles media packetServiceProfile "CARRIER1_G711_PSP" silenceFactor "40" typeOfService
"184" voiceInitialPlayoutBufferDelay "10" peerAbsenceAction "none" aallPayloadSize "47"
preferredRtpPayloadTypeForDtmfRelay "100" mediaPacketCos "0" honorRemotePrecedence "disable"
sendRoutePSPPrecedence "disable"

commit

set profiles media packetServiceProfile "PBX1_G711_PSP" silenceFactor "40" typeOfService "184"
voiceInitialPlayoutBufferDelay "10" peerAbsenceAction "none" aallPayloadSize "47"
preferredRtpPayloadTypeForDtmfRelay "100" mediaPacketCos "0" honorRemotePrecedence "disable"
sendRoutePSPPrecedence "enable"

commit

set profiles media packetServiceProfile "PBX1_TRANSCODE_PSP" silenceFactor "40" typeOfService
"184" voiceInitialPlayoutBufferDelay "10" peerAbsenceAction "none" aallPayloadSize "47"
preferredRtpPayloadTypeForDtmfRelay "101" mediaPacketCos "0" honorRemotePrecedence "disable"
sendRoutePSPPrecedence "disable"

commit

set profiles media packetServiceProfile "CARRIER1_TRAN_FREE_PSP" packetToPacketControl transcode
"transcoderFreeTransparency"

commit

set profiles media packetServiceProfile "PBX1_TRANSCODE_PSP" packetToPacketControl transcode
"conditional"

commit

set profiles media packetServiceProfile "PBX1_TRAN_FRE_PSP" packetToPacketControl transcode
"transcoderFreeTransparency"

commit

set profiles media packetServiceProfile "CARRIER1_G711_PSP" packetToPacketControl transcode
"conditional"

commit

set profiles media packetServiceProfile "PBX1_G711_PSP" packetToPacketControl transcode
"transcoderFreeTransparency"

commit

set profiles media packetServiceProfile "CARRIER1_TRANSCODE_PSP" packetToPacketControl transcode
"conditional"

commit

set profiles media packetServiceProfile "PBX1_TRAN_FRE_PSP" packetToPacketControl
codecsAllowedForTranscoding thisLeg "g711a g711u g729 g722"

commit

set profiles media packetServiceProfile "CARRIER1_G711_PSP" packetToPacketControl
codecsAllowedForTranscoding thisLeg "g711a g711u"

commit

set profiles media packetServiceProfile "PBX1_TRANSCODE_PSP" packetToPacketControl
codecsAllowedForTranscoding thisLeg "g711a g711u g729 g722"

commit

set profiles media packetServiceProfile "CARRIER1_TRANSCODE_PSP" packetToPacketControl
codecsAllowedForTranscoding thisLeg "g711a g711u g729 g722"
```



```
commit
set profiles media packetServiceProfile "PBX1_G711_PSP" secureRtpRtcp cryptoSuiteProfile
"DEFAULT"
commit
set profiles media packetServiceProfile "PBX1_TRAN_FRE_PSP" secureRtpRtcp cryptoSuiteProfile
"DEFAULT"
commit
set profiles media packetServiceProfile "PBX1_TRANSCODE_PSP" secureRtpRtcp cryptoSuiteProfile
"DEFAULT"
commit
set profiles media packetServiceProfile "CARRIER1_G711_PSP" secureRtpRtcp cryptoSuiteProfile
"DEFAULT"
commit
set profiles media packetServiceProfile "CARRIER1_TRAN_FREE_PSP" secureRtpRtcp cryptoSuiteProfile
"DEFAULT"
commit
set profiles media packetServiceProfile "CARRIER1_TRANSCODE_PSP" secureRtpRtcp cryptoSuiteProfile
"DEFAULT"
commit
set profiles media packetServiceProfile "PBX1_G711_PSP" secureRtpRtcp flags allowFallback
"disable" enableSrtp "disable"
commit
set profiles media packetServiceProfile "CARRIER1_G711_PSP" secureRtpRtcp flags allowFallback
"disable" enableSrtp "disable"
commit
set profiles media packetServiceProfile "CARRIER1_TRAN_FREE_PSP" secureRtpRtcp flags
allowFallback "disable" enableSrtp "disable"
commit
set profiles media packetServiceProfile "PBX1_TRANSCODE_PSP" secureRtpRtcp flags allowFallback
"disable" enableSrtp "disable"
commit
set profiles media packetServiceProfile "CARRIER1_TRANSCODE_PSP" secureRtpRtcp flags
allowFallback "disable" enableSrtp "disable"
commit
set profiles media packetServiceProfile "PBX1_TRAN_FRE_PSP" secureRtpRtcp flags allowFallback
"disable" enableSrtp "disable"
commit
set profiles media packetServiceProfile "PBX1_TRANSCODE_PSP" dataCalls
preferredRtpDataPayloadType "56" initialPayoutBufferDelay "50" packetSize "20"
commit
set profiles media packetServiceProfile "CARRIER1_TRAN_FREE_PSP" dataCalls
preferredRtpDataPayloadType "56" initialPayoutBufferDelay "50" packetSize "20"
commit
set profiles media packetServiceProfile "CARRIER1_G711_PSP" dataCalls preferredRtpDataPayloadType
"56" initialPayoutBufferDelay "50" packetSize "20"
commit
set profiles media packetServiceProfile "PBX1_G711_PSP" dataCalls preferredRtpDataPayloadType
"56" initialPayoutBufferDelay "50" packetSize "20"
commit
set profiles media packetServiceProfile "CARRIER1_TRANSCODE_PSP" dataCalls
preferredRtpDataPayloadType "56" initialPayoutBufferDelay "50" packetSize "20"
```



```
commit

set profiles media packetServiceProfile "PBX1_TRAN_FRE_PSP" dataCalls preferredRtpDataPayloadType
"56" initialPlayoutBufferDelay "50" packetSize "20"

commit

set profiles media packetServiceProfile "CARRIER1_TRANSCODE_PSP" rtcpOptions rtcp "enable"
terminationForPassthrough "disable" packetLossThreshold "0" packetLossAction "none"

commit

set profiles media packetServiceProfile "CARRIER1_G711_PSP" rtcpOptions rtcp "enable"
terminationForPassthrough "disable" packetLossThreshold "0" packetLossAction "none"

commit

set profiles media packetServiceProfile "CARRIER1_TRAN_FREE_PSP" rtcpOptions rtcp "enable"
terminationForPassthrough "disable" packetLossThreshold "0" packetLossAction "none"

commit

set profiles media packetServiceProfile "PBX1_TRAN_FRE_PSP" rtcpOptions rtcp "enable"
terminationForPassthrough "disable" packetLossThreshold "0" packetLossAction "none"

commit

set profiles media packetServiceProfile "PBX1_TRANSCODE_PSP" rtcpOptions rtcp "enable"
terminationForPassthrough "disable" packetLossThreshold "0" packetLossAction "none"

commit

set profiles media packetServiceProfile "PBX1_G711_PSP" rtcpOptions rtcp "enable"
terminationForPassthrough "disable" packetLossThreshold "0" packetLossAction "none"

commit

set profiles media packetServiceProfile "CARRIER1_TRANSCODE_PSP" codec codecEntry1
"G729ab_20ms_2833" codecEntry2 "G711u_20ms_2833"

commit

set profiles media packetServiceProfile "CARRIER1_G711_PSP" codec codecEntry1 "G711u_20ms_2833"

commit

set profiles media packetServiceProfile "PBX1_TRAN_FRE_PSP" codec codecEntry1
"G711u_20ms_2833_T38" codecEntry2 "G711a_20ms_2833_T38" codecEntry3 "G729ab_20ms_2833_T38"
codecEntry4 "G722_20ms_2833_T38"

commit

set profiles media packetServiceProfile "PBX1_TRANSCODE_PSP" codec codecEntry1 "G729ab_20ms_2833"
codecEntry2 "G711u_20ms_2833"

commit

set profiles media packetServiceProfile "PBX1_G711_PSP" codec codecEntry1 "G711u_20ms_2833"

commit

set profiles media packetServiceProfile "CARRIER1_TRAN_FREE_PSP" codec codecEntry1
"G711u_20ms_2833" codecEntry2 "G729ab_20ms_2833"

commit

set profiles media packetServiceProfile "PBX1_G711_PSP" t38 dataRateManagementType
"type2TransferOfTcf" lowSpeedNumberOfRedundantPackets "1" maxBitRate "14.4Kbits_s"
numberOfRedundantPackets "1"

commit

set profiles media packetServiceProfile "CARRIER1_TRANSCODE_PSP" t38 dataRateManagementType
"type2TransferOfTcf" lowSpeedNumberOfRedundantPackets "1" maxBitRate "14.4Kbits_s"
numberOfRedundantPackets "1"

commit

set profiles media packetServiceProfile "CARRIER1_TRAN_FREE_PSP" t38 dataRateManagementType
"type2TransferOfTcf" lowSpeedNumberOfRedundantPackets "1" maxBitRate "14.4Kbits_s"
numberOfRedundantPackets "1"

commit
```



```
set profiles media packetServiceProfile "PBX1_TRAN_FRE_PSP" t38 dataRateManagementType
"type2TransferOfTcf" lowSpeedNumberOfRedundantPackets "1" maxBitRate "14.4Kbits_s"
numberOfRedundantPackets "1"

commit

set profiles media packetServiceProfile "PBX1_TRANSCODE_PSP" t38 dataRateManagementType
"type2TransferOfTcf" lowSpeedNumberOfRedundantPackets "1" maxBitRate "14.4Kbits_s"
numberOfRedundantPackets "1"

commit

set profiles media packetServiceProfile "CARRIER1_G711_PSP" t38 dataRateManagementType
"type2TransferOfTcf" lowSpeedNumberOfRedundantPackets "1" maxBitRate "14.4Kbits_s"
numberOfRedundantPackets "1"

commit

set profiles media packetServiceProfile "PBX1_TRANSCODE_PSP" flags disallowDataCalls "disable"
digitDetectSendEnabled "disable" useDirectMedia "enable" validatePeerSupportForDtmfEvents
"disable" interworkDtmfWithoutTranscoding "disable"

commit

set profiles media packetServiceProfile "PBX1_G711_PSP" flags disallowDataCalls "disable"
digitDetectSendEnabled "disable" useDirectMedia "disable" validatePeerSupportForDtmfEvents
"disable" interworkDtmfWithoutTranscoding "disable"

commit

set profiles media packetServiceProfile "CARRIER1_TRAN_FREE_PSP" flags disallowDataCalls
"disable" digitDetectSendEnabled "disable" useDirectMedia "disable"
validatePeerSupportForDtmfEvents "disable" interworkDtmfWithoutTranscoding "disable"

commit

set profiles media packetServiceProfile "CARRIER1_TRANSCODE_PSP" flags disallowDataCalls
"disable" digitDetectSendEnabled "disable" useDirectMedia "disable"
validatePeerSupportForDtmfEvents "disable" interworkDtmfWithoutTranscoding "disable"

commit

set profiles media packetServiceProfile "CARRIER1_G711_PSP" flags disallowDataCalls "disable"
digitDetectSendEnabled "disable" useDirectMedia "disable" validatePeerSupportForDtmfEvents
"disable" interworkDtmfWithoutTranscoding "disable"

commit

set profiles media packetServiceProfile "PBX1_TRAN_FRE_PSP" flags disallowDataCalls "disable"
digitDetectSendEnabled "disable" useDirectMedia "enable" validatePeerSupportForDtmfEvents
"disable" interworkDtmfWithoutTranscoding "disable"

commit

set profiles media packetServiceProfile "CARRIER1_TRANSCODE_PSP" packetToPacketControl
conditionsInAdditionToNoCommonCodec differentDtmfRelay "enable" differentPacketSize "enable"
differentSilenceSuppression "enable" honorOfferPreference "disable"

commit

set profiles media packetServiceProfile "PBX1_TRANSCODE_PSP" packetToPacketControl
conditionsInAdditionToNoCommonCodec differentDtmfRelay "enable" differentPacketSize "enable"
differentSilenceSuppression "enable" honorOfferPreference "disable"

commit

set profiles media packetServiceProfile "CARRIER1_G711_PSP" packetToPacketControl
conditionsInAdditionToNoCommonCodec differentDtmfRelay "disable" differentPacketSize
"enable" differentSilenceSuppression "disable" honorOfferPreference "disable"

commit

set profiles media packetServiceProfile "PBX1_TRAN_FRE_PSP" videoCalls maxVideoBandwidth "0"
videoBandwidthReductionFactor "0" audioOnlyIfVideoIsPrevented "enable"

commit

set profiles media packetServiceProfile "PBX1_TRANSCODE_PSP" videoCalls maxVideoBandwidth "0"
videoBandwidthReductionFactor "0" audioOnlyIfVideoIsPrevented "enable"

commit
```




```
set profiles media packetServiceProfile "CARRIER1_G711_PSP" videoCalls maxVideoBandwidth "0"
    videoBandwidthReductionFactor "0" audioOnlyIfVideoIsPrevented "enable"

commit

set profiles media packetServiceProfile "CARRIER1_TRANSCODE_PSP" videoCalls maxVideoBandwidth "0"
    videoBandwidthReductionFactor "0" audioOnlyIfVideoIsPrevented "enable"

commit

set profiles media packetServiceProfile "CARRIER1_TRAN_FREE_PSP" videoCalls maxVideoBandwidth "0"
    videoBandwidthReductionFactor "0" audioOnlyIfVideoIsPrevented "enable"

commit

set profiles media packetServiceProfile "PBX1_G711_PSP" videoCalls maxVideoBandwidth "0"
    videoBandwidthReductionFactor "0" audioOnlyIfVideoIsPrevented "enable"

commit

set profiles media packetServiceProfile "PBX1_TRANSCODE_PSP" silenceInsertionDescriptor
    g711SidRtpPayloadType "13" heartbeat "enable"

commit

set profiles media packetServiceProfile "CARRIER1_G711_PSP" silenceInsertionDescriptor
    g711SidRtpPayloadType "13" heartbeat "enable"

commit

set profiles media packetServiceProfile "CARRIER1_TRANSCODE_PSP" silenceInsertionDescriptor
    g711SidRtpPayloadType "13" heartbeat "enable"

commit

set profiles media packetServiceProfile "CARRIER1_TRAN_FREE_PSP" silenceInsertionDescriptor
    g711SidRtpPayloadType "13" heartbeat "enable"

commit

set profiles media packetServiceProfile "PBX1_G711_PSP" silenceInsertionDescriptor
    g711SidRtpPayloadType "13" heartbeat "enable"

commit

set profiles media packetServiceProfile "PBX1_TRAN_FRE_PSP" silenceInsertionDescriptor
    g711SidRtpPayloadType "13" heartbeat "enable"

commit

set profiles media packetServiceProfile "CARRIER1_G711_PSP" t38 ecm ecmPreferred "disable"

commit

set profiles media packetServiceProfile "PBX1_TRANSCODE_PSP" t38 ecm ecmPreferred "disable"

commit

set profiles media packetServiceProfile "PBX1_TRAN_FRE_PSP" t38 ecm ecmPreferred "disable"

commit

set profiles media packetServiceProfile "CARRIER1_TRAN_FREE_PSP" t38 ecm ecmPreferred "disable"

commit

set profiles media packetServiceProfile "CARRIER1_TRANSCODE_PSP" t38 ecm ecmPreferred "disable"

commit

set profiles media packetServiceProfile "PBX1_G711_PSP" t38 ecm ecmPreferred "disable"

commit

#####
# profiles signaling sipAdaptor
#####
set profiles signaling sipAdaptorProfile "Generic_Profile_26" state "enabled"
```



```
set profiles signaling sipAdaptorProfile "Generic_Profile_26" rule "1" applyMatchHeader "all"
set profiles signaling sipAdaptorProfile "Generic_Profile_26" rule "1" criterion "1" type
"messageBody"
set profiles signaling sipAdaptorProfile "Generic_Profile_26" rule "1" criterion "1" messageBody
condition "exist"
set profiles signaling sipAdaptorProfile "Generic_Profile_26" rule "1" criterion "2" type
"message"
set profiles signaling sipAdaptorProfile "Generic_Profile_26" rule "1" criterion "2" message
messageTypes "requestAll"
set profiles signaling sipAdaptorProfile "Generic_Profile_26" rule "1" action "1" type
"messageBody" operation "regdel"
set profiles signaling sipAdaptorProfile "Generic_Profile_26" rule "1" action "1" to type
"messageBody" messageBodyValue "all"
set profiles signaling sipAdaptorProfile "Generic_Profile_26" rule "1" action "1" regexp string
"UUS.*?\r\n"
set profiles signaling sipAdaptorProfile "ReqHandlingToOptional" state "enabled"
set profiles signaling sipAdaptorProfile "ReqHandlingToOptional" rule "1"
set profiles signaling sipAdaptorProfile "ReqHandlingToOptional" rule "1" criterion "1" type
"message"
set profiles signaling sipAdaptorProfile "ReqHandlingToOptional" rule "1" criterion "1" message
messageTypes "requestAll"
set profiles signaling sipAdaptorProfile "ReqHandlingToOptional" rule "1" criterion "2" type
"header"
set profiles signaling sipAdaptorProfile "ReqHandlingToOptional" rule "1" criterion "2" header
name "Content-Type" value "application/gtd" condition "has-value"
set profiles signaling sipAdaptorProfile "ReqHandlingToOptional" rule "1" action "1" type
"variable" operation "store"
set profiles signaling sipAdaptorProfile "ReqHandlingToOptional" rule "1" action "1" from type
"value" value "1"
set profiles signaling sipAdaptorProfile "ReqHandlingToOptional" rule "1" action "1" to type
"variable" variableValue "var1"
set profiles signaling sipAdaptorProfile "ReqHandlingToOptional" rule "2"
set profiles signaling sipAdaptorProfile "ReqHandlingToOptional" rule "2" criterion "1" type
"message"
set profiles signaling sipAdaptorProfile "ReqHandlingToOptional" rule "2" criterion "1" message
messageTypes "requestAll"
set profiles signaling sipAdaptorProfile "ReqHandlingToOptional" rule "2" criterion "2" type
"header"
set profiles signaling sipAdaptorProfile "ReqHandlingToOptional" rule "2" criterion "2" header
name "Content-Disposition" condition "exist"
set profiles signaling sipAdaptorProfile "ReqHandlingToOptional" rule "2" criterion "3" type
"variable"
set profiles signaling sipAdaptorProfile "ReqHandlingToOptional" rule "2" criterion "3" variable
condition "has-value" variableID "var1" value "1"
set profiles signaling sipAdaptorProfile "ReqHandlingToOptional" rule "2" action "1" type
"parameter" operation "modify" paramType "generic"
set profiles signaling sipAdaptorProfile "ReqHandlingToOptional" rule "2" action "1" from type
"value" value "optional"
set profiles signaling sipAdaptorProfile "ReqHandlingToOptional" rule "2" action "1" to type
"parameter" value "handling"
set profiles signaling sipAdaptorProfile "ReqHandlingToOptional" rule "3"
set profiles signaling sipAdaptorProfile "ReqHandlingToOptional" rule "3" criterion "1" type
"message"
```



```
set profiles signaling sipAdaptorProfile "ReqHandlingToOptional" rule "3" criterion "1" message
messageTypes "requestAll" methodTypes "invite"

set profiles signaling sipAdaptorProfile "ReqHandlingToOptional" rule "3" criterion "2" type
"messageBody"

set profiles signaling sipAdaptorProfile "ReqHandlingToOptional" rule "3" criterion "2"
messageBody condition "exist"

set profiles signaling sipAdaptorProfile "ReqHandlingToOptional" rule "3" action "1" type
"messageBody" operation "regsub"

set profiles signaling sipAdaptorProfile "ReqHandlingToOptional" rule "3" action "1" from type
"value" value "sendrecv"

set profiles signaling sipAdaptorProfile "ReqHandlingToOptional" rule "3" action "1" to type
"messageBody" messageBodyValue "all"

set profiles signaling sipAdaptorProfile "ReqHandlingToOptional" rule "3" action "1" regexp string
"inactive"

set profiles signaling sipAdaptorProfile "ReqHandlingToOptional" rule "4"

set profiles signaling sipAdaptorProfile "ReqHandlingToOptional" rule "4" criterion "1" type
"message"

set profiles signaling sipAdaptorProfile "ReqHandlingToOptional" rule "4" criterion "1" message
messageTypes "requestAll" methodTypes "invite"

set profiles signaling sipAdaptorProfile "ReqHandlingToOptional" rule "4" criterion "2" type
"messageBody"

set profiles signaling sipAdaptorProfile "ReqHandlingToOptional" rule "4" criterion "2"
messageBody condition "exist"

set profiles signaling sipAdaptorProfile "ReqHandlingToOptional" rule "4" action "1" type
"messageBody" operation "regsub"

set profiles signaling sipAdaptorProfile "ReqHandlingToOptional" rule "4" action "1" from type
"value" value "sendrecv"

set profiles signaling sipAdaptorProfile "ReqHandlingToOptional" rule "4" action "1" to type
"messageBody" messageBodyValue "all"

set profiles signaling sipAdaptorProfile "ReqHandlingToOptional" rule "4" action "1" regexp string
"sendonly"

set profiles signaling sipAdaptorProfile "OptionalHandlingToReq" state "enabled"

set profiles signaling sipAdaptorProfile "OptionalHandlingToReq" rule "1"

set profiles signaling sipAdaptorProfile "OptionalHandlingToReq" rule "1" criterion "1" type
"message"

set profiles signaling sipAdaptorProfile "OptionalHandlingToReq" rule "1" criterion "1" message
messageTypes "requestAll"

set profiles signaling sipAdaptorProfile "OptionalHandlingToReq" rule "1" criterion "2" type
"header"

set profiles signaling sipAdaptorProfile "OptionalHandlingToReq" rule "1" criterion "2" header
name "Content-Type" value "application/gtd" condition "has-value"

set profiles signaling sipAdaptorProfile "OptionalHandlingToReq" rule "1" action "1" type
"variable" operation "store"

set profiles signaling sipAdaptorProfile "OptionalHandlingToReq" rule "1" action "1" from type
"value" value "1"

set profiles signaling sipAdaptorProfile "OptionalHandlingToReq" rule "1" action "1" to type
"variable" variableValue "var1"

set profiles signaling sipAdaptorProfile "OptionalHandlingToReq" rule "2"

set profiles signaling sipAdaptorProfile "OptionalHandlingToReq" rule "2" criterion "1" type
"message"

set profiles signaling sipAdaptorProfile "OptionalHandlingToReq" rule "2" criterion "1" message
messageTypes "requestAll"

set profiles signaling sipAdaptorProfile "OptionalHandlingToReq" rule "2" criterion "2" type
"header"
```



```
set profiles signaling sipAdaptorProfile "OptionalHandlingToReq" rule "2" criterion "2" header
name "Content-Disposition" condition "exist"

set profiles signaling sipAdaptorProfile "OptionalHandlingToReq" rule "2" criterion "3" type
"variable"

set profiles signaling sipAdaptorProfile "OptionalHandlingToReq" rule "2" criterion "3" variable
condition "has-value" variableID "var1" value "1"

set profiles signaling sipAdaptorProfile "OptionalHandlingToReq" rule "2" action "1" type
"parameter" operation "modify" paramType "generic"

set profiles signaling sipAdaptorProfile "OptionalHandlingToReq" rule "2" action "1" from type
"value" value "required"

set profiles signaling sipAdaptorProfile "OptionalHandlingToReq" rule "2" action "1" to type
"parameter" value "handling"

set profiles signaling sipAdaptorProfile "OptionalHandlingToReq" rule "3" applyMatchHeader "one"

set profiles signaling sipAdaptorProfile "OptionalHandlingToReq" rule "3" criterion "1" type
"message"

set profiles signaling sipAdaptorProfile "OptionalHandlingToReq" rule "3" criterion "1" message
messageTypes "response" statusCode "302"

set profiles signaling sipAdaptorProfile "OptionalHandlingToReq" rule "3" criterion "2" type
"header"

set profiles signaling sipAdaptorProfile "OptionalHandlingToReq" rule "3" criterion "2" header
name "From" condition "exist"

set profiles signaling sipAdaptorProfile "OptionalHandlingToReq" rule "3" criterion "3" type
"token"

set profiles signaling sipAdaptorProfile "OptionalHandlingToReq" rule "3" criterion "3" token
condition "exist" tokenType "uriusername"

set profiles signaling sipAdaptorProfile "OptionalHandlingToReq" rule "3" action "1" type "token"
operation "modify"

set profiles signaling sipAdaptorProfile "OptionalHandlingToReq" rule "3" action "1" from type
"value" value "[external number 1]"

set profiles signaling sipAdaptorProfile "OptionalHandlingToReq" rule "3" action "1" to type
"token" tokenValue "uriusername"

set profiles signaling sipAdaptorProfile "OptionalHandlingToReq" rule "4" applyMatchHeader "one"

set profiles signaling sipAdaptorProfile "OptionalHandlingToReq" rule "4" criterion "1" type
"message"

set profiles signaling sipAdaptorProfile "OptionalHandlingToReq" rule "4" criterion "1" message
messageTypes "response" statusCode "302"

set profiles signaling sipAdaptorProfile "OptionalHandlingToReq" rule "4" criterion "2" type
"header"

set profiles signaling sipAdaptorProfile "OptionalHandlingToReq" rule "4" criterion "2" header
name "Diversion" condition "absent"

set profiles signaling sipAdaptorProfile "OptionalHandlingToReq" rule "4" action "1" type "header"
operation "add" headerInfo "headerValue" headerPosition "last"

set profiles signaling sipAdaptorProfile "OptionalHandlingToReq" rule "4" action "1" from type
"value" value "&lt;sip:[external number 2]@[external IP address 1]&gt;"

set profiles signaling sipAdaptorProfile "OptionalHandlingToReq" rule "4" action "1" to type
"header" value "Diversion"

set profiles signaling sipAdaptorProfile "OptionalHandlingToReq" rule "5" applyMatchHeader "all"

set profiles signaling sipAdaptorProfile "OptionalHandlingToReq" rule "5" criterion "1" type
"message"

set profiles signaling sipAdaptorProfile "OptionalHandlingToReq" rule "5" criterion "1" message
messageTypes "all"

set profiles signaling sipAdaptorProfile "OptionalHandlingToReq" rule "5" criterion "2" type
"messageBody"

set profiles signaling sipAdaptorProfile "OptionalHandlingToReq" rule "5" criterion "2"
messageBody condition "exist"
```



```
set profiles signaling sipAdaptorProfile "OptionalHandlingToReq" rule "5" action "1" type
"messageBody" operation "regsub"

set profiles signaling sipAdaptorProfile "OptionalHandlingToReq" rule "5" action "1" from type
"value" value "0 18 101"

set profiles signaling sipAdaptorProfile "OptionalHandlingToReq" rule "5" action "1" to type
"messageBody" messageBodyValue "all"

set profiles signaling sipAdaptorProfile "OptionalHandlingToReq" rule "5" action "1" regexp string
"18 0 101" matchInstance "all"

set profiles signaling sipAdaptorProfile "rpid_uridispname" state "disabled"

set profiles signaling sipAdaptorProfile "rpid_uridispname" rule "1"

set profiles signaling sipAdaptorProfile "rpid_uridispname" rule "1" criterion "1" type "message"

set profiles signaling sipAdaptorProfile "rpid_uridispname" rule "1" criterion "1" message
messageTypes "requestAll"

set profiles signaling sipAdaptorProfile "rpid_uridispname" rule "1" criterion "2" type "header"

set profiles signaling sipAdaptorProfile "rpid_uridispname" rule "1" criterion "2" header name
"Remote-Party-ID" condition "exist"

set profiles signaling sipAdaptorProfile "rpid_uridispname" rule "1" criterion "3" type "token"

set profiles signaling sipAdaptorProfile "rpid_uridispname" rule "1" criterion "3" token condition
"exist" tokenType "uridisplayname"

set profiles signaling sipAdaptorProfile "rpid_uridispname" rule "1" action "1" type "token"
operation "store"

set profiles signaling sipAdaptorProfile "rpid_uridispname" rule "1" action "1" from type "token"
tokenValue "uridisplayname"

set profiles signaling sipAdaptorProfile "rpid_uridispname" rule "1" action "1" to type "variable"
variableValue "var1"

set profiles signaling sipAdaptorProfile "rpid_uridispname" rule "1" action "2" type "variable"
operation "regprepend"

set profiles signaling sipAdaptorProfile "rpid_uridispname" rule "1" action "2" from type "value"
value "--CVP"

set profiles signaling sipAdaptorProfile "rpid_uridispname" rule "1" action "2" to type "variable"
variableValue "var1"

set profiles signaling sipAdaptorProfile "rpid_uridispname" rule "1" action "2" regexp string
"&quot;" matchInstance "two"

set profiles signaling sipAdaptorProfile "rpid_uridispname" rule "1" action "3" type "token"
operation "modify"

set profiles signaling sipAdaptorProfile "rpid_uridispname" rule "1" action "3" from type
"variable" variableValue "var1"

set profiles signaling sipAdaptorProfile "rpid_uridispname" rule "1" action "3" to type "token"
tokenValue "uridisplayname"

commit

#####
# signaling isupSignalingProfile
#####

#####
# profiles signaling XHeaderProfile
#####

#####
# profiles digitParameterHandling dmPmRule
```



```
#####
set profiles digitParameterHandling dmPmRule "CHANGE_TO_68XX" subRule "0" ruleType "digit"
commit
set profiles digitParameterHandling dmPmRule "Add_cc" subRule "1" ruleType "digit"
commit
set profiles digitParameterHandling dmPmRule "Add_cc" subRule "0" criteria "Callednumber_under10"
ruleType "digit"
commit
set profiles digitParameterHandling dmPmRule "Add_cc" subRule "1" digitManipulation numberType
"callingNumber"
commit
set profiles digitParameterHandling dmPmRule "Add_cc" subRule "0" digitManipulation numberType
"callingNumber calledNumber"
commit
set profiles digitParameterHandling dmPmRule "CHANGE_TO_68XX" subRule "0" digitManipulation
numberType "calledNumber"
commit
set profiles digitParameterHandling dmPmRule "Add_cc" subRule "1" digitManipulation
digitStringManipulation startDigitPosition "0" numberOfDigits "15" action "none"
commit
set profiles digitParameterHandling dmPmRule "Add_cc" subRule "0" digitManipulation
digitStringManipulation startDigitPosition "0" numberOfDigits "0" action
"addDestinationCountry"
commit
set profiles digitParameterHandling dmPmRule "CHANGE_TO_68XX" subRule "0" digitManipulation
digitStringManipulation startDigitPosition "0" numberOfDigits "6" action "none"
commit
set profiles digitParameterHandling dmPmRule "CHANGE_TO_68XX" subRule "0" digitManipulation
digitStringManipulation replacement type "variable" digitString "calledNumber"
startDigitPosition "0" numberOfDigits "0"
commit
set profiles digitParameterHandling dmPmRule "Add_cc" subRule "0" digitManipulation
digitStringManipulation replacement type "variable" digitString "billingNumber"
startDigitPosition "0" numberOfDigits "0"
commit
set profiles digitParameterHandling dmPmRule "Add_cc" subRule "1" digitManipulation
digitStringManipulation replacement type "constant" digitString "callingNumber"
startDigitPosition "0" numberOfDigits "0" value "[external number 1]"
commit
set profiles digitParameterHandling dmPmRule "CHANGE_TO_68XX" subRule "0" digitManipulation
numberParameterManipulation natureOfAddress "none" numberingPlanIndicator "none"
numberLength "10" presentation "none" screening "none" includeInEgress "none"
commit
set profiles digitParameterHandling dmPmRule "Add_cc" subRule "1" digitManipulation
numberParameterManipulation natureOfAddress "none" numberingPlanIndicator "none"
numberLength "noInput" presentation "none" screening "none" includeInEgress "none"
commit
set profiles digitParameterHandling dmPmRule "Add_cc" subRule "0" digitManipulation
numberParameterManipulation natureOfAddress "none" numberingPlanIndicator "none"
numberLength "noInput" presentation "none" screening "none" includeInEgress "none"
commit
```



```
#####
# profiles signaling ipSignalingProfile
#####

set profiles signaling ipSignalingProfile "PBX1_SIP_IPSP" ipProtocolType "sipOnly"

commit

set profiles signaling ipSignalingProfile "CARRIER1_SIP_IPSP" ipProtocolType "sipOnly"

commit

set profiles signaling ipSignalingProfile "PBX1_SIP_IPSP" commonIpAttributes flags
addPathServiceRoute "disable" addPChargingFuncAddr "disable" callHoldInterworking "disable"
clearmodeForDataCalls "disable" createPChargingVector "disable" createPathHeader "disable"
createServiceRouteHeader "disable" customizedSessionTimerBehavior "disable"
disableAlsoHeader "disable" disableHostTranslation "disable" disableMediaLockDown "enable"
disableReferToUriParameters "disable" discardReceivedReasonHeader "disable"
doNotIncludeSsAttributeInReInvite "disable" enableDefaultPUIProcedures "disable"
enableDialStringHandling "disable" endToEndBye "disable" includeIpPortsInFromAndToHeaders
"disable" includeReasonHeader "enable" includeSsAttributeInInitialInvite "disable"
includeTransportTypeInContactHeader "enable" insertPeerAddressAsTopRouteHeader "disable"
mapCauseLocation "disable" mapSuspendResumeEventInPSvcInfoHeader "disable"
mapUiInPSigInfoHeader "disable" mimeCausePrecedeReasonHeaderCause "disable"

commit

set profiles signaling ipSignalingProfile "PBX1_SIP_IPSP" commonIpAttributes flags
minimizeRelayingOfMediaChangesFromOtherCallLegAll "enable"
relayDataPathModeChangeFromOtherCallLeg "disable" noContentDisposition "disable"
noPortNumber5060 "enable" noUserInfoInContactHeader "disable"
onlySelectedCodecInSessionRefresh "disable" pCalledPartyIDSupport "disable" pChgMsgInfo
"disable" rejectRefer "disable" replaceHostOnViaHeader "disable" reQueryPsxOnRegisterRefresh
"disable" validateAccessNwInfoHeader "disable" restrictHistoryInfoHeader "disable"
sdpOlineOnlyCompares "disable" sendAllAllowedCodecsForLateMediaInviteOrReInvite "enable"
sendDirectMediaInfoInSdpAttribute "disable" sendPtimeInSdp "disable"
sessionTimerRefreshUpdate "disable" setAcceptHeaderToApplicationSdpOnly "disable"
setOlineDash "disable" setSessionVersionZero "disable" setSlineDash "disable"
skipPsxQueryForRefer "disable" storePathHeader "disable" storeServiceRouteHeader "disable"
terminalPortabilityInterworking "disable"

commit

set profiles signaling ipSignalingProfile "PBX1_SIP_IPSP" commonIpAttributes flags
sendRtcpPortInSdp "disable" storePChargingFuncAddr "disable" storePChargingVector "enable"
createPVisitedNetworkId "disable"

commit

set profiles signaling ipSignalingProfile "CARRIER1_SIP_IPSP" commonIpAttributes flags
addPathServiceRoute "disable" addPChargingFuncAddr "disable" callHoldInterworking "disable"
clearmodeForDataCalls "disable" createPChargingVector "disable" createPathHeader "disable"
createServiceRouteHeader "disable" customizedSessionTimerBehavior "disable"
disableAlsoHeader "disable" disableHostTranslation "disable" disableMediaLockDown "enable"
disableReferToUriParameters "disable" discardReceivedReasonHeader "disable"
doNotIncludeSsAttributeInReInvite "disable" enableDefaultPUIProcedures "disable"
enableDialStringHandling "disable" endToEndBye "disable" includeIpPortsInFromAndToHeaders
"disable" includeReasonHeader "enable" includeSsAttributeInInitialInvite "disable"
includeTransportTypeInContactHeader "enable" insertPeerAddressAsTopRouteHeader "disable"
mapCauseLocation "disable" mapSuspendResumeEventInPSvcInfoHeader "disable"
mapUiInPSigInfoHeader "disable"

commit

set profiles signaling ipSignalingProfile "CARRIER1_SIP_IPSP" commonIpAttributes flags
mimeCausePrecedeReasonHeaderCause "disable"
minimizeRelayingOfMediaChangesFromOtherCallLegAll "enable"
relayDataPathModeChangeFromOtherCallLeg "disable" noContentDisposition "disable"
noPortNumber5060 "enable" noUserInfoInContactHeader "disable"
onlySelectedCodecInSessionRefresh "disable" pCalledPartyIDSupport "disable" pChgMsgInfo
"disable" rejectRefer "disable" replaceHostOnViaHeader "disable" reQueryPsxOnRegisterRefresh
"disable" validateAccessNwInfoHeader "disable" restrictHistoryInfoHeader "disable"
sdpOlineOnlyCompares "disable" sendAllAllowedCodecsForLateMediaInviteOrReInvite "enable"
sendDirectMediaInfoInSdpAttribute "disable" sendPtimeInSdp "disable"
sessionTimerRefreshUpdate "disable" setAcceptHeaderToApplicationSdpOnly "disable"
setOlineDash "disable" setSessionVersionZero "disable" setSlineDash "disable"
skipPsxQueryForRefer "disable" storePathHeader "disable"

commit
```



```
set profiles signaling ipSignalingProfile "CARRIER1_SIP_IPSP" commonIpAttributes flags
storeServiceRouteHeader "disable" terminalPortabilityInterworking "disable"
sendRtcpPortInSdp "disable" storePChargingFuncAddr "disable" storePChargingVector "enable"
createPVisitedNetworkId "disable"

commit

set profiles signaling ipSignalingProfile "PBX1_SIP_IPSP" egressIpAttributes redirect flags
skipCrankbackProfileAndAlwaysCrankback "enable" forceRequeryForRedirection "disable"
relayUnusedContactParams "disable"

commit

set profiles signaling ipSignalingProfile "CARRIER1_SIP_IPSP" egressIpAttributes redirect flags
skipCrankbackProfileAndAlwaysCrankback "enable" forceRequeryForRedirection "disable"
relayUnusedContactParams "disable"

commit

set profiles signaling ipSignalingProfile "PBX1_SIP_IPSP" egressIpAttributes
sipHeadersAndParameters includeChargeInformation "includeNone" destinationTrunkGroupOptions
"includeNone" originatingTrunkGroupOptions "includeNone"

commit

set profiles signaling ipSignalingProfile "CARRIER1_SIP_IPSP" egressIpAttributes
sipHeadersAndParameters includeChargeInformation "includeNone" destinationTrunkGroupOptions
"includeNone" originatingTrunkGroupOptions "includeNone"

commit

set profiles signaling ipSignalingProfile "CARRIER1_SIP_IPSP" egressIpAttributes
sipHeadersAndParameters callForwarding dataMapping "diversion" diversionHeaderTransparency
"disable"

commit

set profiles signaling ipSignalingProfile "PBX1_SIP_IPSP" egressIpAttributes
sipHeadersAndParameters callForwarding dataMapping "diversion" diversionHeaderTransparency
"disable"

commit

set profiles signaling ipSignalingProfile "CARRIER1_SIP_IPSP" egressIpAttributes domainName
useSipDomainNameInFromField "disable" useSipDomainNameInRequestUri "disable"

commit

set profiles signaling ipSignalingProfile "PBX1_SIP_IPSP" egressIpAttributes domainName
useSipDomainNameInFromField "disable" useSipDomainNameInRequestUri "disable"

commit

set profiles signaling ipSignalingProfile "CARRIER1_SIP_IPSP" commonIpAttributes
optionTagInSupportedHeader suppressReplaceTag "disable"

commit

set profiles signaling ipSignalingProfile "PBX1_SIP_IPSP" commonIpAttributes
optionTagInSupportedHeader suppressReplaceTag "disable"

commit

set profiles signaling ipSignalingProfile "CARRIER1_SIP_IPSP" egressIpAttributes
numberPortabilityAttributes npdiOptions "includeNpdiYes" disableRn "disable"

commit

set profiles signaling ipSignalingProfile "PBX1_SIP_IPSP" egressIpAttributes
numberPortabilityAttributes npdiOptions "includeNpdiYes" disableRn "disable"

commit

set profiles signaling ipSignalingProfile "CARRIER1_SIP_IPSP" egressIpAttributes transport type1
"none" type2 "none" type3 "none" type4 "none"

commit

set profiles signaling ipSignalingProfile "PBX1_SIP_IPSP" egressIpAttributes transport type1
"tcp" type2 "none" type3 "none" type4 "none"

commit
```




```
set profiles signaling ipSignalingProfile "CARRIER1_SIP_IPSP" commonIpAttributes
transparencyFlags acceptContactHeader "disable" alertInformationHeader "disable"
authcodeHeaders "disable" passCompleteContactHeader "disable" contactHeader "disable"
errorInfo "disable" fromHeader "disable" historyInfo "disable" maxForwardsHeader "disable"
mwiBody "disable" pAccessNetworkInfoHeader "disable" pCalledPartyID "disable"
pChargingVectorHeader "disable" pEarlyMedia "disable" pVisitedNetworkIDHeader "disable"
pathHeader "disable" qsigBody "disable" reasonHeader "disable" referredByHeader "disable"
requestURI "disable" routeHeader "disable" serviceRouteHeader "disable" sipBody "disable"
sipfragBody "disable" toHeader "disable" toneBody "disable" unknownBody "enable"
unknownHeader "enable" userToUserHeader "enable" viaHeader "disable" geolocation "enable"
geolocationRouting "enable" geolocationError "enable" acceptHeader "disable" callInfoHeader
"disable"

commit

set profiles signaling ipSignalingProfile "PBX1_SIP_IPSP" commonIpAttributes transparencyFlags
acceptContactHeader "disable" alertInformationHeader "disable" authcodeHeaders "disable"
passCompleteContactHeader "disable" contactHeader "disable" errorInfo "disable" fromHeader
"disable" historyInfo "disable" maxForwardsHeader "disable" mwiBody "disable"
pAccessNetworkInfoHeader "disable" pCalledPartyID "disable" pChargingVectorHeader "disable"
pEarlyMedia "disable" pVisitedNetworkIDHeader "disable" pathHeader "disable" qsigBody
"disable" reasonHeader "disable" referredByHeader "disable" requestURI "disable" routeHeader
"disable" serviceRouteHeader "disable" sipBody "disable" sipfragBody "disable" toHeader
"disable" toneBody "disable" unknownBody "enable" unknownHeader "enable" userToUserHeader
"enable" viaHeader "disable" geolocation "enable" geolocationRouting "enable"
geolocationError "enable" acceptHeader "disable" callInfoHeader "disable"

commit

set profiles signaling ipSignalingProfile "PBX1_SIP_IPSP" egressIpAttributes isub allowNsnipSub
"disable" allowUserSpecifiedIsup "disable" includeCalledPartyIsup "disable"
includeCallingPartyIsup "disable"

commit

set profiles signaling ipSignalingProfile "CARRIER1_SIP_IPSP" egressIpAttributes isub
allowNsnipSub "disable" allowUserSpecifiedIsup "disable" includeCalledPartyIsup "disable"
includeCallingPartyIsup "disable"

commit

set profiles signaling ipSignalingProfile "CARRIER1_SIP_IPSP" egressIpAttributes privacy
transparency "disable" privacyInformation "pAssertedId"

commit

set profiles signaling ipSignalingProfile "PBX1_SIP_IPSP" egressIpAttributes privacy transparency
"disable" privacyInformation "remotePartyId"

commit

set profiles signaling ipSignalingProfile "CARRIER1_SIP_IPSP" egressIpAttributes privacy flags
includePrivacy "enable" privacyRequiredByProxy "disable" msLyncPrivacySupport "disable"
includeEmbeddedPAIheaderInRedirectedInvite "disable"

commit

set profiles signaling ipSignalingProfile "PBX1_SIP_IPSP" egressIpAttributes privacy flags
includePrivacy "enable" privacyRequiredByProxy "disable" msLyncPrivacySupport "disable"
includeEmbeddedPAIheaderInRedirectedInvite "disable"

commit

set profiles signaling ipSignalingProfile "CARRIER1_SIP_IPSP" egressIpAttributes
sipHeadersAndParameters flags includeCic "disable" includeCpcInformation "disable"
includeNpi "disable" includeOlip "disable" includePKAdn "disable" includePstnParameters
"disable" includeQvalue "disable" skipCSeqCheckInEarlyDialog "disable"
transparencyForDestinationTrunkGroupParameter "enable"

commit

set profiles signaling ipSignalingProfile "PBX1_SIP_IPSP" egressIpAttributes
sipHeadersAndParameters flags includeCic "disable" includeCpcInformation "disable"
includeNpi "disable" includeOlip "disable" includePKAdn "disable" includePstnParameters
"disable" includeQvalue "disable" skipCSeqCheckInEarlyDialog "disable"
transparencyForDestinationTrunkGroupParameter "enable"

commit

set profiles signaling ipSignalingProfile "CARRIER1_SIP_IPSP" egressIpAttributes redirect mode
"acceptRedirection" contactHandling "mergeReceivedContacts"
```



```
commit

set profiles signaling ipSignalingProfile "PBX1_SIP_IPSP" egressIpAttributes redirect mode
"acceptRedirection" contactHandling "mergeReceivedContacts"

commit

set profiles signaling ipSignalingProfile "PBX1_SIP_IPSP" ingressIpAttributes carrierInformation
generateTerminatingCa "disable" generateTerminatingCic "disable"

commit

set profiles signaling ipSignalingProfile "CARRIER1_SIP_IPSP" ingressIpAttributes
carrierInformation generateTerminatingCa "disable" generateTerminatingCic "disable"

commit

set profiles signaling ipSignalingProfile "CARRIER1_SIP_IPSP" commonIpAttributes relayFlags
dialogEventPackage "disable" dtmfBody "disable" info "disable" message "disable" notify
"disable" options "disable" regEventPackage "disable" refer "disable" sonusMediaBody
"disable" statusCode3xx "enable" statusCode4xx6xx "disable" thirdPartyBodies "disable"
force503to500Relay "disable" publish "disable"

commit

set profiles signaling ipSignalingProfile "PBX1_SIP_IPSP" commonIpAttributes relayFlags
dialogEventPackage "disable" dtmfBody "disable" info "disable" message "disable" notify
"disable" options "disable" regEventPackage "disable" refer "disable" sonusMediaBody
"disable" statusCode3xx "enable" statusCode4xx6xx "disable" thirdPartyBodies "disable"
force503to500Relay "disable" publish "disable"

commit

set profiles signaling ipSignalingProfile "PBX1_SIP_IPSP" egressIpAttributes bci
bciInterworkEncountered "disable" bciIsdnAddress "disable"

commit

set profiles signaling ipSignalingProfile "CARRIER1_SIP_IPSP" egressIpAttributes bci
bciInterworkEncountered "disable" bciIsdnAddress "disable"

commit

set profiles signaling ipSignalingProfile "PBX1_SIP_IPSP" commonIpAttributes callTransferFlags
handleIpAddressesNotPresentInNetworkSelectorTableNst "routeViaTransferringIptg"
forceReRouteViaPsxQuery "disable"

commit

set profiles signaling ipSignalingProfile "CARRIER1_SIP_IPSP" commonIpAttributes
callTransferFlags handleIpAddressesNotPresentInNetworkSelectorTableNst
"routeViaTransferringIptg" forceReRouteViaPsxQuery "disable"

commit

set profiles signaling ipSignalingProfile "CARRIER1_SIP_IPSP" commonIpAttributes
optionTagInRequireHeader suppressReplaceTag "disable"

commit

set profiles signaling ipSignalingProfile "PBX1_SIP_IPSP" commonIpAttributes
optionTagInRequireHeader suppressReplaceTag "disable"

commit

set profiles signaling ipSignalingProfile "PBX1_SIP_IPSP" egressIpAttributes flags
bgcfTargetSchemeTransparency "disable" convertInactiveToSendrecv "disable"
disable2806Compliance "enable" disableOptionalRegisterParameters "disable"
map1810r182MessageTo183 "disable" mapContractorNumberInPSigInfoHeader "disable"
suppressUnregister "disable" ttcIsupMapping "disable" useCalledPartyInRequestUri "disable"
useColonInSdpMediaTypeParameter "disable" validateISubAddress "disable" qosBasedRouting
"disable"

commit

set profiles signaling ipSignalingProfile "CARRIER1_SIP_IPSP" egressIpAttributes flags
bgcfTargetSchemeTransparency "disable" convertInactiveToSendrecv "disable"
disable2806Compliance "enable" disableOptionalRegisterParameters "disable"
map1810r182MessageTo183 "disable" mapContractorNumberInPSigInfoHeader "disable"
suppressUnregister "disable" ttcIsupMapping "disable" useCalledPartyInRequestUri "disable"
useColonInSdpMediaTypeParameter "disable" validateISubAddress "disable" qosBasedRouting
"disable"
```



```
commit

set profiles signaling ipSignalingProfile "CARRIER1_SIP_IPSP" ingressIpAttributes flags
sip181Supported "disable" sip182Supported "disable" mapCalledPartyCategoryInPSigInfoHeader
"disable" noSdpIn180Supported "disable" registrationExpiresinExpiresHeader "disable"
send183OnInitiatingDisconnectTreatment "disable" sendSdpIn200OkIf18xReliable "disable"
sendSdpInSubsequent18x "disable"

commit

set profiles signaling ipSignalingProfile "PBX1_SIP_IPSP" ingressIpAttributes flags
sip181Supported "disable" sip182Supported "disable" mapCalledPartyCategoryInPSigInfoHeader
"disable" noSdpIn180Supported "disable" registrationExpiresinExpiresHeader "disable"
send183OnInitiatingDisconnectTreatment "disable" sendSdpIn200OkIf18xReliable "disable"
sendSdpInSubsequent18x "disable"

commit

#####
# profiles services sipArsProfile
#####

#####
# profiles services sipSecurityProfile
#####

commit

#####
# ipPeer,ipPort
#####

set addressContext "default" zone "EXTERNAL_ZONE" ipPeer "LD_VZ" ipAddress "[external IP address
2]" ipPort "5072" defaultForIp "false"

commit

set addressContext "default" zone "INTERNAL_ZONE" ipPeer "IPP_CUCM" ipAddress "10.70.18.2" ipPort
"5060" defaultForIp "false"

commit

set addressContext "default" zone "INTERNAL_ZONE" ipPeer "IPP_CVP" ipAddress "10.64.2.195" ipPort
"5060" defaultForIp "false"

commit

#####
# zone,ipPeer
#####

set addressContext "default" zone "INTERNAL_ZONE" ipPeer "IPP_CUCM" surrogateRegistration
retryTimer "15" state "disabled"

commit

set addressContext "default" zone "EXTERNAL_ZONE" ipPeer "LD_VZ" surrogateRegistration retryTimer
"15" state "disabled"

commit

set addressContext "default" zone "INTERNAL_ZONE" ipPeer "IPP_CVP" surrogateRegistration
retryTimer "15" state "disabled"

commit

set addressContext "default" zone "INTERNAL_ZONE" ipPeer "IPP_CUCM" policy sip fqdnPort "0"
```



```
commit
set addressContext "default" zone "EXTERNAL_ZONE" ipPeer "LD_VZ" policy sip fqdnPort "0"
commit
set addressContext "default" zone "INTERNAL_ZONE" ipPeer "IPP_CVP" policy sip fqdnPort "0"
commit

#####
# profiles callRouting
#####
commit

#####
# diamNode
#####

#####
# TrunkGroup
#####
set addressContext "default" zone "EXTERNAL_ZONE" sipTrunkGroup "VZ_CARRIER" state "enabled" mode
  "inService" action "dryUp" dryUpTimeout "5" downstreamForkingSupport "disabled" ucidSupport
  "none" recordingDNPreference "fromHeaderOnly" media dataPathModePassthru "disabled"
  directMediaAllowed "disabled" directMediaAllowedBehindNapt "disabled" directMediaGroupId "0"
  lateMediaSupport "passthru" maxPtimeDefault "150" comediaConnectionRole "none" tmr64K
  "disabled" mediaIpInterfaceGroupName "EXTERNAL_IPIG" sourceAddressFiltering "enabled"
  mediaAddrType "matchSigAddrType" recordable "disabled"
commit
set addressContext "default" zone "EXTERNAL_ZONE" sipTrunkGroup "VZ_CARRIER" media
  dataPathModePassthru "disabled" directMediaAllowed "disabled" directMediaAllowedBehindNapt
  "disabled" directMediaGroupId "0" lateMediaSupport "passthru" maxPtimeDefault "150"
  comediaConnectionRole "none" tmr64K "disabled" mediaIpInterfaceGroupName "EXTERNAL_IPIG"
  sourceAddressFiltering "enabled" mediaAddrType "matchSigAddrType" recordable "disabled"
commit
set addressContext "default" zone "INTERNAL_ZONE" sipTrunkGroup "CVP" state "enabled" mode
  "inService" action "dryUp" dryUpTimeout "5" downstreamForkingSupport "disabled" ucidSupport
  "none" recordingDNPreference "fromHeaderOnly" media dataPathModePassthru "disabled"
  directMediaAllowed "enabled" directMediaAllowedBehindNapt "disabled" directMediaGroupId "1"
  lateMediaSupport "convert" maxPtimeDefault "150" comediaConnectionRole "none" tmr64K
  "disabled" mediaIpInterfaceGroupName "INTERNAL_IPIG" sourceAddressFiltering "enabled"
  mediaAddrType "matchSigAddrType" recordable "disabled"
commit
set addressContext "default" zone "INTERNAL_ZONE" sipTrunkGroup "CVP" media dataPathModePassthru
  "disabled" directMediaAllowed "enabled" directMediaAllowedBehindNapt "disabled"
  directMediaGroupId "1" lateMediaSupport "convert" maxPtimeDefault "150"
  comediaConnectionRole "none" tmr64K "disabled" mediaIpInterfaceGroupName "INTERNAL_IPIG"
  sourceAddressFiltering "enabled" mediaAddrType "matchSigAddrType" recordable "disabled"
commit
set addressContext "default" zone "INTERNAL_ZONE" sipTrunkGroup "CVP-[external number 2]" state
  "enabled" mode "inService" action "dryUp" dryUpTimeout "5" downstreamForkingSupport
  "disabled" ucidSupport "none" recordingDNPreference "fromHeaderOnly" media
  dataPathModePassthru "disabled" directMediaAllowed "enabled" directMediaAllowedBehindNapt
  "disabled" directMediaGroupId "1" lateMediaSupport "convert" maxPtimeDefault "150"
  comediaConnectionRole "none" tmr64K "disabled" mediaIpInterfaceGroupName "INTERNAL_IPIG"
  sourceAddressFiltering "enabled" mediaAddrType "matchSigAddrType" recordable "disabled"
commit
```



```
set addressContext "default" zone "INTERNAL_ZONE" sipTrunkGroup "CVP-[external number 2]" media
dataPathModePassthru "disabled" directMediaAllowed "enabled" directMediaAllowedBehindNapt
"disabled" directMediaGroupId "1" lateMediaSupport "convert" maxPtimeDefault "150"
comediaConnectionRole "none" tmr64K "disabled" mediaIpInterfaceGroupName "INTERNAL_IPIG"
sourceAddressFiltering "enabled" mediaAddrType "matchSigAddrType" recordable "disabled"

commit

set addressContext "default" zone "INTERNAL_ZONE" sipTrunkGroup "CUCM" state "enabled" mode
"inService" action "dryUp" dryUpTimeout "5" downstreamForkingSupport "disabled" ucidSupport
"none" recordingDNPreference "fromHeaderOnly" media dataPathModePassthru "disabled"
directMediaAllowed "enabled" directMediaAllowedBehindNapt "disabled" directMediaGroupId "1"
lateMediaSupport "convert" maxPtimeDefault "150" comediaConnectionRole "none" tmr64K
"disabled" mediaIpInterfaceGroupName "INTERNAL_IPIG" sourceAddressFiltering "enabled"
mediaAddrType "matchSigAddrType" recordable "disabled"

commit

set addressContext "default" zone "INTERNAL_ZONE" sipTrunkGroup "CUCM" media dataPathModePassthru
"disabled" directMediaAllowed "enabled" directMediaAllowedBehindNapt "disabled"
directMediaGroupId "1" lateMediaSupport "convert" maxPtimeDefault "150"
comediaConnectionRole "none" tmr64K "disabled" mediaIpInterfaceGroupName "INTERNAL_IPIG"
sourceAddressFiltering "enabled" mediaAddrType "matchSigAddrType" recordable "disabled"

commit

set addressContext "default" zone "EXTERNAL_ZONE" sipTrunkGroup "VZ_CARRIER" signaling
routeMsgValidation "noValidation" maxFwdsDefault "70" backwardInfoMsgConDialog "disabled"
isupMimeBodyRelay "enabled" rel100Support "enabled" privacyParamRestricted "default"
relayNonInviteRequest "disabled" uriPreference "none" strictParse "disabled"
isubParamPreference "rfc2806" variantType "sonus" factorValue "1" localNumberSupport
"disabled" disableTermIOIForPcscf "disabled" deRegParentWithChildDereg "disabled"
usePSXRouteAsReqUriInReg "disabled" psxRouteForSubscribe "disabled" validateAor "enabled"
sourceAddressValidation "disabled" condIncMethInAllowHdr "disabled" acceptHistoryInfo
"disabled" egressCallIdStaticString "-" allowByeChallenge "disabled"
enforceTlsIfSipsUriScheme "disabled" enforceSipsIfEgressIsTls "disabled"
usePsxRouteForEmergencyCall "disabled" ocsSupport "disabled" relayReplacesHeader "disabled"
sendSdpToPsx "disabled" useGAPwhenRnDisabled "disabled"

commit

set addressContext "default" zone "INTERNAL_ZONE" sipTrunkGroup "CVP" signaling
routeMsgValidation "noValidation" maxFwdsDefault "70" backwardInfoMsgConDialog "disabled"
isupMimeBodyRelay "enabled" rel100Support "enabled" privacyParamRestricted "default"
relayNonInviteRequest "disabled" uriPreference "none" strictParse "disabled"
isubParamPreference "rfc2806" variantType "sonus" factorValue "1" localNumberSupport
"disabled" disableTermIOIForPcscf "disabled" deRegParentWithChildDereg "disabled"
usePSXRouteAsReqUriInReg "disabled" psxRouteForSubscribe "disabled" validateAor "enabled"
sourceAddressValidation "disabled" condIncMethInAllowHdr "disabled" acceptHistoryInfo
"disabled" egressCallIdStaticString "-" allowByeChallenge "disabled"
enforceTlsIfSipsUriScheme "disabled" enforceSipsIfEgressIsTls "disabled"
usePsxRouteForEmergencyCall "disabled" ocsSupport "disabled" relayReplacesHeader "disabled"
sendSdpToPsx "disabled" useGAPwhenRnDisabled "disabled"

commit

set addressContext "default" zone "INTERNAL_ZONE" sipTrunkGroup "CUCM" signaling
routeMsgValidation "noValidation" maxFwdsDefault "70" backwardInfoMsgConDialog "disabled"
isupMimeBodyRelay "enabled" rel100Support "enabled" privacyParamRestricted "default"
relayNonInviteRequest "disabled" uriPreference "none" strictParse "disabled"
isubParamPreference "rfc2806" variantType "sonus" factorValue "1" localNumberSupport
"disabled" disableTermIOIForPcscf "disabled" deRegParentWithChildDereg "disabled"
usePSXRouteAsReqUriInReg "disabled" psxRouteForSubscribe "disabled" validateAor "enabled"
sourceAddressValidation "disabled" condIncMethInAllowHdr "disabled" acceptHistoryInfo
"disabled" egressCallIdStaticString "-" allowByeChallenge "disabled"
enforceTlsIfSipsUriScheme "disabled" enforceSipsIfEgressIsTls "disabled"
usePsxRouteForEmergencyCall "disabled" ocsSupport "disabled" relayReplacesHeader "disabled"
sendSdpToPsx "disabled" useGAPwhenRnDisabled "disabled"

commit

set addressContext "default" zone "INTERNAL_ZONE" sipTrunkGroup "CVP-[external number 2]"
signaling routeMsgValidation "noValidation" maxFwdsDefault "70" backwardInfoMsgConDialog
"disabled" isupMimeBodyRelay "enabled" rel100Support "enabled" privacyParamRestricted
"default" relayNonInviteRequest "disabled" uriPreference "none" strictParse "disabled"
isubParamPreference "rfc2806" variantType "sonus" factorValue "1" localNumberSupport
"disabled" disableTermIOIForPcscf "disabled" deRegParentWithChildDereg "disabled"
usePSXRouteAsReqUriInReg "disabled" psxRouteForSubscribe "disabled" validateAor "enabled"
sourceAddressValidation "disabled" condIncMethInAllowHdr "disabled" acceptHistoryInfo
"disabled" egressCallIdStaticString "-" allowByeChallenge "disabled"
```



```
enforceTlsIfSipsUriScheme "disabled" enforceSipsIfEgressIsTls "disabled"
usePsxRouteForEmergencyCall "disabled" ocsSupport "disabled" relayReplacesHeader "disabled"
sendSdpToPsx "disabled" useGAPwhenRnDisabled "disabled"

commit

set addressContext "default" zone "INTERNAL_ZONE" sipTrunkGroup "CVP-[external number 2]"
signaling messageManipulation inputAdapterProfile "ReqHandlingToOptional"
outputAdapterProfile "rpid_uridisname" includeAppHdrs "disabled"

commit

set addressContext "default" zone "INTERNAL_ZONE" sipTrunkGroup "CVP" signaling
messageManipulation inputAdapterProfile "ReqHandlingToOptional" outputAdapterProfile
"rpid_uridisname" includeAppHdrs "disabled"

commit

set addressContext "default" zone "EXTERNAL_ZONE" sipTrunkGroup "VZ_CARRIER" signaling
messageManipulation outputAdapterProfile "OptionalHandlingToReq" includeAppHdrs "disabled"

commit

set addressContext "default" zone "INTERNAL_ZONE" sipTrunkGroup "CUCM" signaling
messageManipulation inputAdapterProfile "ReqHandlingToOptional" includeAppHdrs "disabled"

commit

set addressContext "default" zone "INTERNAL_ZONE" sipTrunkGroup "CVP" services dnsSupportType
"a-only" preconditions "none" transmitPreconditions "supported" preconditionIntwkUsing183
"disabled" emergencyCallHandlingMode "none" jsrsrcBandwidthReservation "disabled"
remoteEPreservation "disabled"

commit

set addressContext "default" zone "INTERNAL_ZONE" sipTrunkGroup "CUCM" services dnsSupportType
"a-only" preconditions "none" transmitPreconditions "supported" preconditionIntwkUsing183
"disabled" emergencyCallHandlingMode "none" jsrsrcBandwidthReservation "disabled"
remoteEPreservation "disabled"

commit

set addressContext "default" zone "INTERNAL_ZONE" sipTrunkGroup "CVP-[external number 2]"
services dnsSupportType "a-only" preconditions "none" transmitPreconditions "supported"
preconditionIntwkUsing183 "disabled" emergencyCallHandlingMode "none"
jsrsrcBandwidthReservation "disabled" remoteEPreservation "disabled"

commit

set addressContext "default" zone "EXTERNAL_ZONE" sipTrunkGroup "VZ_CARRIER" services
dnsSupportType "a-only" preconditions "none" transmitPreconditions "supported"
preconditionIntwkUsing183 "disabled" emergencyCallHandlingMode "none"
jsrsrcBandwidthReservation "disabled" remoteEPreservation "disabled"

commit

set addressContext "default" zone "EXTERNAL_ZONE" sipTrunkGroup "VZ_CARRIER" services
natTraversal signalingNat "disabled" mediaNat "disabled" tcpKeepaliveTimer "240"
udpKeepaliveTimer "60"

commit

set addressContext "default" zone "INTERNAL_ZONE" sipTrunkGroup "CUCM" services natTraversal
signalingNat "disabled" mediaNat "disabled" tcpKeepaliveTimer "240" udpKeepaliveTimer "60"

commit

set addressContext "default" zone "INTERNAL_ZONE" sipTrunkGroup "CVP" services natTraversal
signalingNat "disabled" mediaNat "disabled" tcpKeepaliveTimer "240" udpKeepaliveTimer "60"

commit

set addressContext "default" zone "INTERNAL_ZONE" sipTrunkGroup "CVP-[external number 2]"
services natTraversal signalingNat "disabled" mediaNat "disabled" tcpKeepaliveTimer "240"
udpKeepaliveTimer "60"

commit

set addressContext "default" zone "EXTERNAL_ZONE" sipTrunkGroup "VZ_CARRIER" signaling
P-HeaderExtensions useIngressOrigCa "disabled" addEgressOrigCa "disabled"

commit
```



```
set addressContext "default" zone "INTERNAL_ZONE" sipTrunkGroup "CVP" signaling
  P-HeaderExtensions useIngressOrigCa "disabled" addEgressOrigCa "disabled"

commit

set addressContext "default" zone "INTERNAL_ZONE" sipTrunkGroup "CVP-[external number 2]"
  signaling P-HeaderExtensions useIngressOrigCa "disabled" addEgressOrigCa "disabled"

commit

set addressContext "default" zone "INTERNAL_ZONE" sipTrunkGroup "CUCM" signaling
  P-HeaderExtensions useIngressOrigCa "disabled" addEgressOrigCa "disabled"

commit

set addressContext "default" zone "INTERNAL_ZONE" sipTrunkGroup "CVP-[external number 2]"
  signaling transportPreference preference1 "none" preference2 "none" preference3 "none"
  preference4 "none"

commit

set addressContext "default" zone "EXTERNAL_ZONE" sipTrunkGroup "VZ_CARRIER" signaling
  transportPreference preference1 "none" preference2 "none" preference3 "none" preference4
  "none"

commit

set addressContext "default" zone "INTERNAL_ZONE" sipTrunkGroup "CVP" signaling
  transportPreference preference1 "none" preference2 "none" preference3 "none" preference4
  "none"

commit

set addressContext "default" zone "INTERNAL_ZONE" sipTrunkGroup "CUCM" signaling
  transportPreference preference1 "none" preference2 "none" preference3 "none" preference4
  "none"

commit

set addressContext "default" zone "INTERNAL_ZONE" sipTrunkGroup "CUCM" signaling causeCodeMapping
  useNonDefaultCauseCodeforARSBlackList "disabled"

commit

set addressContext "default" zone "INTERNAL_ZONE" sipTrunkGroup "CVP-[external number 2]"
  signaling causeCodeMapping useNonDefaultCauseCodeforARSBlackList "disabled"

commit

set addressContext "default" zone "INTERNAL_ZONE" sipTrunkGroup "CVP" signaling causeCodeMapping
  useNonDefaultCauseCodeforARSBlackList "disabled"

commit

set addressContext "default" zone "EXTERNAL_ZONE" sipTrunkGroup "VZ_CARRIER" signaling
  causeCodeMapping useNonDefaultCauseCodeforARSBlackList "disabled"

commit

set addressContext "default" zone "INTERNAL_ZONE" sipTrunkGroup "CVP-[external number 2]"
  signaling retryCounters general "7" invite "2" bye "3" cancel "3" reInvite "3" retryOn422 "5"
  retryOn491 "5" invite200 "0"

commit

set addressContext "default" zone "INTERNAL_ZONE" sipTrunkGroup "CUCM" signaling retryCounters
  general "7" invite "2" bye "3" cancel "3" reInvite "3" retryOn422 "5" retryOn491 "5" invite200
  "0"

commit

set addressContext "default" zone "EXTERNAL_ZONE" sipTrunkGroup "VZ_CARRIER" signaling
  retryCounters general "7" invite "2" bye "3" cancel "3" reInvite "3" retryOn422 "5" retryOn491
  "5" invite200 "0"

commit

set addressContext "default" zone "INTERNAL_ZONE" sipTrunkGroup "CVP" signaling retryCounters
  general "7" invite "2" bye "3" cancel "3" reInvite "3" retryOn422 "5" retryOn491 "5" invite200
  "0"

commit
```



```
set addressContext "default" zone "INTERNAL_ZONE" sipTrunkGroup "CVP" ingressIpPrefix
"10.64.2.195" "32"

commit

set addressContext "default" zone "EXTERNAL_ZONE" sipTrunkGroup "VZ_CARRIER" ingressIpPrefix
"[external IP address 2]" "32"

commit

set addressContext "default" zone "INTERNAL_ZONE" sipTrunkGroup "CUCM" ingressIpPrefix
"10.70.18.2" "32"

commit

set addressContext "default" zone "INTERNAL_ZONE" sipTrunkGroup "CVP-[external number 2]" cac
callLimit "unlimited" bandwidthLimit "unlimited" callLimitThreshold "0"
bandwidthLimitThreshold "0" emergencyOversubscription "10" registrationLimit "unlimited"
estimatedChildRegistrations "1" subscriptionLimit "unlimited"

commit

set addressContext "default" zone "EXTERNAL_ZONE" sipTrunkGroup "VZ_CARRIER" cac callLimit
"unlimited" bandwidthLimit "unlimited" callLimitThreshold "0" bandwidthLimitThreshold "0"
emergencyOversubscription "10" registrationLimit "unlimited" estimatedChildRegistrations "1"
subscriptionLimit "unlimited"

commit

set addressContext "default" zone "INTERNAL_ZONE" sipTrunkGroup "CUCM" cac callLimit "unlimited"
bandwidthLimit "unlimited" callLimitThreshold "0" bandwidthLimitThreshold "0"
emergencyOversubscription "10" registrationLimit "unlimited" estimatedChildRegistrations "1"
subscriptionLimit "unlimited"

commit

set addressContext "default" zone "INTERNAL_ZONE" sipTrunkGroup "CVP" cac callLimit "unlimited"
bandwidthLimit "unlimited" callLimitThreshold "0" bandwidthLimitThreshold "0"
emergencyOversubscription "10" registrationLimit "unlimited" estimatedChildRegistrations "1"
subscriptionLimit "unlimited"

commit

set addressContext "default" zone "INTERNAL_ZONE" sipTrunkGroup "CVP" cac ingress callRateMax
"unlimited" callBurstMax "unlimited" registerRateMax "unlimited" registerBurstMax
"unlimited" callLimit "unlimited" emergencyOversubscription "10" subscribeRateMax
"unlimited" subscribeBurstMax "unlimited" otherReqRateMax "unlimited" otherReqBurstMax
"unlimited"

commit

set addressContext "default" zone "INTERNAL_ZONE" sipTrunkGroup "CUCM" cac ingress callRateMax
"unlimited" callBurstMax "unlimited" registerRateMax "unlimited" registerBurstMax
"unlimited" callLimit "unlimited" emergencyOversubscription "10" subscribeRateMax
"unlimited" subscribeBurstMax "unlimited" otherReqRateMax "unlimited" otherReqBurstMax
"unlimited"

commit

set addressContext "default" zone "EXTERNAL_ZONE" sipTrunkGroup "VZ_CARRIER" cac ingress
callRateMax "unlimited" callBurstMax "unlimited" registerRateMax "unlimited"
registerBurstMax "unlimited" callLimit "unlimited" emergencyOversubscription "10"
subscribeRateMax "unlimited" subscribeBurstMax "unlimited" otherReqRateMax "unlimited"
otherReqBurstMax "unlimited"

commit

set addressContext "default" zone "INTERNAL_ZONE" sipTrunkGroup "CVP-[external number 2]" cac
ingress callRateMax "unlimited" callBurstMax "unlimited" registerRateMax "unlimited"
registerBurstMax "unlimited" callLimit "unlimited" emergencyOversubscription "10"
subscribeRateMax "unlimited" subscribeBurstMax "unlimited" otherReqRateMax "unlimited"
otherReqBurstMax "unlimited"

commit

set addressContext "default" zone "INTERNAL_ZONE" sipTrunkGroup "CUCM" goe minTimeToProceed "60"

commit

set addressContext "default" zone "INTERNAL_ZONE" sipTrunkGroup "CVP" goe minTimeToProceed "60"

commit
```




```
set addressContext "default" zone "INTERNAL_ZONE" sipTrunkGroup "CVP-[external number 2]" goe
minTimeToProceed "60"

commit

set addressContext "default" zone "EXTERNAL_ZONE" sipTrunkGroup "VZ_CARRIER" goe minTimeToProceed
"60"

commit

set addressContext "default" zone "INTERNAL_ZONE" sipTrunkGroup "CVP" goe rfactor
criticalQosRfactorLimit "50" majorQosRfactorLimit "70"

commit

set addressContext "default" zone "INTERNAL_ZONE" sipTrunkGroup "CUCM" goe rfactor
criticalQosRfactorLimit "50" majorQosRfactorLimit "70"

commit

set addressContext "default" zone "EXTERNAL_ZONE" sipTrunkGroup "VZ_CARRIER" goe rfactor
criticalQosRfactorLimit "50" majorQosRfactorLimit "70"

commit

set addressContext "default" zone "INTERNAL_ZONE" sipTrunkGroup "CVP-[external number 2]" goe
rfactor criticalQosRfactorLimit "50" majorQosRfactorLimit "70"

commit

set addressContext "default" zone "INTERNAL_ZONE" sipTrunkGroup "CUCM" goe asr defaultQosAsr "90"
criticalQosAsrLimit "40" majorQosAsrLimit "70"

commit

set addressContext "default" zone "EXTERNAL_ZONE" sipTrunkGroup "VZ_CARRIER" goe asr
defaultQosAsr "90" criticalQosAsrLimit "40" majorQosAsrLimit "70"

commit

set addressContext "default" zone "INTERNAL_ZONE" sipTrunkGroup "CVP-[external number 2]" goe asr
defaultQosAsr "90" criticalQosAsrLimit "40" majorQosAsrLimit "70"

commit

set addressContext "default" zone "INTERNAL_ZONE" sipTrunkGroup "CVP" goe asr defaultQosAsr "90"
criticalQosAsrLimit "40" majorQosAsrLimit "70"

commit

set addressContext "default" zone "INTERNAL_ZONE" sipTrunkGroup "CVP-[external number 2]" goe scru
criticalQosScruLimit "80"

commit

set addressContext "default" zone "EXTERNAL_ZONE" sipTrunkGroup "VZ_CARRIER" goe scru
criticalQosScruLimit "80"

commit

set addressContext "default" zone "INTERNAL_ZONE" sipTrunkGroup "CUCM" goe scru
criticalQosScruLimit "80"

commit

set addressContext "default" zone "INTERNAL_ZONE" sipTrunkGroup "CVP" goe scru
criticalQosScruLimit "80"

commit

set addressContext "default" zone "EXTERNAL_ZONE" sipTrunkGroup "VZ_CARRIER" goe clu
criticalQosCluLimit "80"

commit

set addressContext "default" zone "INTERNAL_ZONE" sipTrunkGroup "CVP-[external number 2]" goe clu
criticalQosCluLimit "80"

commit

set addressContext "default" zone "INTERNAL_ZONE" sipTrunkGroup "CVP" goe clu criticalQosCluLimit
"80"

commit
```



```
set addressContext "default" zone "INTERNAL_ZONE" sipTrunkGroup "CUCM" qoe clu
criticalQosCluLimit "80"

commit

set addressContext "default" zone "INTERNAL_ZONE" sipTrunkGroup "CVP-[external number 2]" qoe pgrd
criticalQosPgrdLimit "2000" defaultPgrdFactor "500"

commit

set addressContext "default" zone "EXTERNAL_ZONE" sipTrunkGroup "VZ_CARRIER" qoe pgrd
criticalQosPgrdLimit "2000" defaultPgrdFactor "500"

commit

set addressContext "default" zone "INTERNAL_ZONE" sipTrunkGroup "CUCM" qoe pgrd
criticalQosPgrdLimit "2000" defaultPgrdFactor "500"

commit

set addressContext "default" zone "INTERNAL_ZONE" sipTrunkGroup "CVP" qoe pgrd
criticalQosPgrdLimit "2000" defaultPgrdFactor "500"

commit

set addressContext "default" zone "INTERNAL_ZONE" sipTrunkGroup "CVP-[external number 2]" cac
egress callRateMax "unlimited" callBurstMax "unlimited" registerRateMax "unlimited"
registerBurstMax "unlimited" callLimit "unlimited" emergencyOversubscription "10"
subscribeRateMax "unlimited" subscribeBurstMax "unlimited" otherReqRateMax "unlimited"
otherReqBurstMax "unlimited"

commit

set addressContext "default" zone "INTERNAL_ZONE" sipTrunkGroup "CVP" cac egress callRateMax
"unlimited" callBurstMax "unlimited" registerRateMax "unlimited" registerBurstMax
"unlimited" callLimit "unlimited" emergencyOversubscription "10" subscribeRateMax
"unlimited" subscribeBurstMax "unlimited" otherReqRateMax "unlimited" otherReqBurstMax
"unlimited"

commit

set addressContext "default" zone "INTERNAL_ZONE" sipTrunkGroup "CUCM" cac egress callRateMax
"unlimited" callBurstMax "unlimited" registerRateMax "unlimited" registerBurstMax
"unlimited" callLimit "unlimited" emergencyOversubscription "10" subscribeRateMax
"unlimited" subscribeBurstMax "unlimited" otherReqRateMax "unlimited" otherReqBurstMax
"unlimited"

commit

set addressContext "default" zone "EXTERNAL_ZONE" sipTrunkGroup "VZ_CARRIER" cac egress
callRateMax "unlimited" callBurstMax "unlimited" registerRateMax "unlimited"
registerBurstMax "unlimited" callLimit "unlimited" emergencyOversubscription "10"
subscribeRateMax "unlimited" subscribeBurstMax "unlimited" otherReqRateMax "unlimited"
otherReqBurstMax "unlimited"

commit

set addressContext "default" zone "INTERNAL_ZONE" sipTrunkGroup "CUCM" policy carrier "0000"
country "1" localizationVariant "northAmerica" featureControlProfile "DEFAULT_IP"

commit

set addressContext "default" zone "EXTERNAL_ZONE" sipTrunkGroup "VZ_CARRIER" policy carrier
"0000" country "1" localizationVariant "northAmerica" featureControlProfile "DEFAULT_IP"

commit

set addressContext "default" zone "INTERNAL_ZONE" sipTrunkGroup "CVP-[external number 2]" policy
carrier "0000" country "1" localizationVariant "northAmerica" featureControlProfile
"DEFAULT_IP"

commit

set addressContext "default" zone "INTERNAL_ZONE" sipTrunkGroup "CVP" policy carrier "0000"
country "1" localizationVariant "northAmerica" featureControlProfile "DEFAULT_IP"

commit

set addressContext "default" zone "INTERNAL_ZONE" sipTrunkGroup "CUCM" policy media
packetServiceProfile "PBX1_TRAN_FRE_PSP"

commit
```



```
set addressContext "default" zone "INTERNAL_ZONE" sipTrunkGroup "CVP-[external number 2]" policy
media packetServiceProfile "PBX1_G711_PSP"

commit

set addressContext "default" zone "EXTERNAL_ZONE" sipTrunkGroup "VZ_CARRIER" policy media
packetServiceProfile "CARRIER1_TRAN_FREE_PSP"

commit

set addressContext "default" zone "INTERNAL_ZONE" sipTrunkGroup "CVP" policy media
packetServiceProfile "PBX1_TRAN_FRE_PSP"

commit

set addressContext "default" zone "INTERNAL_ZONE" sipTrunkGroup "CVP-[external number 2]"
signaling timers t1 "500" t2 "4000" tcpRetransmitTimer "6" sctpRetransmitTimer "6"
sessionKeepalive "1800" sessionMinSE "90" sessionTerminationDeltaTime "0" ocsDialogTimer
"1440"

commit

set addressContext "default" zone "INTERNAL_ZONE" sipTrunkGroup "CVP" signaling timers t1 "500"
t2 "4000" tcpRetransmitTimer "6" sctpRetransmitTimer "6" sessionKeepalive "1800" sessionMinSE
"90" sessionTerminationDeltaTime "0" ocsDialogTimer "1440"

commit

set addressContext "default" zone "INTERNAL_ZONE" sipTrunkGroup "CUCM" signaling timers t1 "500"
t2 "4000" tcpRetransmitTimer "6" sctpRetransmitTimer "6" sessionKeepalive "1800" sessionMinSE
"90" sessionTerminationDeltaTime "0" ocsDialogTimer "1440"

commit

set addressContext "default" zone "EXTERNAL_ZONE" sipTrunkGroup "VZ_CARRIER" signaling timers t1
"500" t2 "4000" tcpRetransmitTimer "6" sctpRetransmitTimer "6" sessionKeepalive "1800"
sessionMinSE "90" sessionTerminationDeltaTime "0" ocsDialogTimer "1440"

commit

set addressContext "default" zone "INTERNAL_ZONE" sipTrunkGroup "CVP" packetOutage
minimumDuration "6000" minimumCalls "1000" bandwidthLimitReduction "50" detectionState
"disabled" detectionInterval "15"

commit

set addressContext "default" zone "INTERNAL_ZONE" sipTrunkGroup "CUCM" packetOutage
minimumDuration "6000" minimumCalls "1000" bandwidthLimitReduction "50" detectionState
"disabled" detectionInterval "15"

commit

set addressContext "default" zone "INTERNAL_ZONE" sipTrunkGroup "CVP-[external number 2]"
packetOutage minimumDuration "6000" minimumCalls "1000" bandwidthLimitReduction "50"
detectionState "disabled" detectionInterval "15"

commit

set addressContext "default" zone "EXTERNAL_ZONE" sipTrunkGroup "VZ_CARRIER" packetOutage
minimumDuration "6000" minimumCalls "1000" bandwidthLimitReduction "50" detectionState
"disabled" detectionInterval "15"

commit

set addressContext "default" zone "INTERNAL_ZONE" sipTrunkGroup "CVP" services longDurationCall
timeoutValue "0" action "noAction" relCause "41" emergencyOrPriorityCalls "exclude"

commit

set addressContext "default" zone "EXTERNAL_ZONE" sipTrunkGroup "VZ_CARRIER" services
longDurationCall timeoutValue "0" action "noAction" relCause "41" emergencyOrPriorityCalls
"exclude"

commit

set addressContext "default" zone "INTERNAL_ZONE" sipTrunkGroup "CUCM" services longDurationCall
timeoutValue "0" action "noAction" relCause "41" emergencyOrPriorityCalls "exclude"

commit

set addressContext "default" zone "INTERNAL_ZONE" sipTrunkGroup "CVP-[external number 2]"
services longDurationCall timeoutValue "0" action "noAction" relCause "41"
emergencyOrPriorityCalls "exclude"
```



```
commit
set addressContext "default" zone "EXTERNAL_ZONE" sipTrunkGroup "VZ_CARRIER" policy services
  classOfService "DEFAULT_IP"
commit
set addressContext "default" zone "INTERNAL_ZONE" sipTrunkGroup "CVP-[external number 2]" policy
  services classOfService "DEFAULT_IP"
commit
set addressContext "default" zone "INTERNAL_ZONE" sipTrunkGroup "CVP" policy services
  classOfService "DEFAULT_IP"
commit
set addressContext "default" zone "INTERNAL_ZONE" sipTrunkGroup "CUCM" policy services
  classOfService "DEFAULT_IP"
commit
set addressContext "default" zone "EXTERNAL_ZONE" sipTrunkGroup "VZ_CARRIER" callReservation
  state "disabled" priorityCallMinimum "1" incomingCallMinimum "1" outgoingCallMinimum "10"
commit
set addressContext "default" zone "INTERNAL_ZONE" sipTrunkGroup "CVP-[external number 2]"
  callReservation state "disabled" priorityCallMinimum "1" incomingCallMinimum "1"
  outgoingCallMinimum "10"
commit
set addressContext "default" zone "INTERNAL_ZONE" sipTrunkGroup "CVP" callReservation state
  "disabled" priorityCallMinimum "1" incomingCallMinimum "1" outgoingCallMinimum "10"
commit
set addressContext "default" zone "INTERNAL_ZONE" sipTrunkGroup "CUCM" callReservation state
  "disabled" priorityCallMinimum "1" incomingCallMinimum "1" outgoingCallMinimum "10"
commit
set addressContext "default" zone "INTERNAL_ZONE" sipTrunkGroup "CVP" callReservation silc state
  "disabled" MC1Percent "75" MC2Percent "25"
commit
set addressContext "default" zone "INTERNAL_ZONE" sipTrunkGroup "CUCM" callReservation silc state
  "disabled" MC1Percent "75" MC2Percent "25"
commit
set addressContext "default" zone "EXTERNAL_ZONE" sipTrunkGroup "VZ_CARRIER" callReservation silc
  state "disabled" MC1Percent "75" MC2Percent "25"
commit
set addressContext "default" zone "INTERNAL_ZONE" sipTrunkGroup "CVP-[external number 2]"
  callReservation silc state "disabled" MC1Percent "75" MC2Percent "25"
commit
set addressContext "default" zone "INTERNAL_ZONE" sipTrunkGroup "CUCM" services overlapAddressing
  overlapState "disabled" minDigitsForQuery "0" timer2 "0" timer3 "4"
commit
set addressContext "default" zone "INTERNAL_ZONE" sipTrunkGroup "CVP-[external number 2]"
  services overlapAddressing overlapState "disabled" minDigitsForQuery "0" timer2 "0" timer3
  "4"
commit
set addressContext "default" zone "INTERNAL_ZONE" sipTrunkGroup "CVP" services overlapAddressing
  overlapState "disabled" minDigitsForQuery "0" timer2 "0" timer3 "4"
commit
set addressContext "default" zone "EXTERNAL_ZONE" sipTrunkGroup "VZ_CARRIER" services
  overlapAddressing overlapState "disabled" minDigitsForQuery "0" timer2 "0" timer3 "4"
commit
```



```
set addressContext "default" zone "INTERNAL_ZONE" sipTrunkGroup "CVP" signaling callingParty
  paiForCallingParty "enabled" ppiForCallingParty "enabled" rpiForCallingParty "enabled"
  fromHdrForCallingParty "enabled" cpcParamFromHeader "default" trustedSourceForIsup "enabled"

commit

set addressContext "default" zone "EXTERNAL_ZONE" sipTrunkGroup "VZ_CARRIER" signaling
  callingParty paiForCallingParty "enabled" ppiForCallingParty "enabled" rpiForCallingParty
  "enabled" fromHdrForCallingParty "enabled" cpcParamFromHeader "default" trustedSourceForIsup
  "enabled"

commit

set addressContext "default" zone "INTERNAL_ZONE" sipTrunkGroup "CUCM" signaling callingParty
  paiForCallingParty "enabled" ppiForCallingParty "enabled" rpiForCallingParty "enabled"
  fromHdrForCallingParty "enabled" cpcParamFromHeader "default" trustedSourceForIsup "enabled"

commit

set addressContext "default" zone "INTERNAL_ZONE" sipTrunkGroup "CVP-[external number 2]"
  signaling callingParty paiForCallingParty "enabled" ppiForCallingParty "enabled"
  rpiForCallingParty "enabled" fromHdrForCallingParty "enabled" cpcParamFromHeader "default"
  trustedSourceForIsup "enabled"

commit

set addressContext "default" zone "INTERNAL_ZONE" sipTrunkGroup "CUCM" services natTraversal
  adaptiveLearning state "disabled" maxUdpPinholeTimer "180" maxTcpPinholeTimer "600"
  reLearningInterval "24"

commit

set addressContext "default" zone "EXTERNAL_ZONE" sipTrunkGroup "VZ_CARRIER" services
  natTraversal adaptiveLearning state "disabled" maxUdpPinholeTimer "180" maxTcpPinholeTimer
  "600" reLearningInterval "24"

commit

set addressContext "default" zone "INTERNAL_ZONE" sipTrunkGroup "CVP" services natTraversal
  adaptiveLearning state "disabled" maxUdpPinholeTimer "180" maxTcpPinholeTimer "600"
  reLearningInterval "24"

commit

set addressContext "default" zone "INTERNAL_ZONE" sipTrunkGroup "CVP-[external number 2]"
  services natTraversal adaptiveLearning state "disabled" maxUdpPinholeTimer "180"
  maxTcpPinholeTimer "600" reLearningInterval "24"

commit

set addressContext "default" zone "INTERNAL_ZONE" sipTrunkGroup "CUCM" policy signaling
  ipSignalingProfile "PBX1_SIP_IPSP"

commit

set addressContext "default" zone "EXTERNAL_ZONE" sipTrunkGroup "VZ_CARRIER" policy signaling
  ipSignalingProfile "CARRIER1_SIP_IPSP"

commit

set addressContext "default" zone "INTERNAL_ZONE" sipTrunkGroup "CVP-[external number 2]" policy
  signaling ipSignalingProfile "PBX1_SIP_IPSP"

commit

set addressContext "default" zone "INTERNAL_ZONE" sipTrunkGroup "CVP" policy signaling
  ipSignalingProfile "PBX1_SIP_IPSP"

commit

set addressContext "default" zone "INTERNAL_ZONE" sipTrunkGroup "CVP-[external number 2]"
  signaling registration requireRegistration "none" expires "3600" insideExpiresMinimum "3600"
  includeXOriginalAddr "disabled" bulkRegisterFormat "disabled"

commit

set addressContext "default" zone "EXTERNAL_ZONE" sipTrunkGroup "VZ_CARRIER" signaling
  registration requireRegistration "none" expires "3600" insideExpiresMinimum "3600"
  includeXOriginalAddr "disabled" bulkRegisterFormat "disabled"

commit
```



```
set addressContext "default" zone "INTERNAL_ZONE" sipTrunkGroup "CVP" signaling registration
requireRegistration "none" expires "3600" insideExpiresMinimum "3600" includeXOriginalAddr
"disabled" bulkRegisterFormat "disabled"

commit

set addressContext "default" zone "INTERNAL_ZONE" sipTrunkGroup "CUCM" signaling registration
requireRegistration "none" expires "3600" insideExpiresMinimum "3600" includeXOriginalAddr
"disabled" bulkRegisterFormat "disabled"

commit

set addressContext "default" zone "INTERNAL_ZONE" sipTrunkGroup "CVP" callRouting useRouteSet
"disabled" ansSupervisionTimeout "300" ansSupervisionTimeoutAction "release"
crankBackProfile "default" internationalNoaPlus "disabled" addStoredPathAsTopRoute
"disabled"

commit

set addressContext "default" zone "INTERNAL_ZONE" sipTrunkGroup "CUCM" callRouting useRouteSet
"disabled" ansSupervisionTimeout "300" ansSupervisionTimeoutAction "release"
crankBackProfile "default" internationalNoaPlus "disabled" addStoredPathAsTopRoute
"disabled"

commit

set addressContext "default" zone "EXTERNAL_ZONE" sipTrunkGroup "VZ_CARRIER" callRouting
useRouteSet "disabled" ansSupervisionTimeout "300" ansSupervisionTimeoutAction "release"
crankBackProfile "default" internationalNoaPlus "disabled" addStoredPathAsTopRoute
"disabled"

commit

set addressContext "default" zone "INTERNAL_ZONE" sipTrunkGroup "CVP-[external number 2]"
callRouting useRouteSet "disabled" ansSupervisionTimeout "300" ansSupervisionTimeoutAction
"release" crankBackProfile "default" internationalNoaPlus "disabled" addStoredPathAsTopRoute
"disabled"

commit

set addressContext "default" zone "INTERNAL_ZONE" sipTrunkGroup "CUCM" policy
digitParameterHandling numberingPlan "NANP_ACCESS"

commit

set addressContext "default" zone "INTERNAL_ZONE" sipTrunkGroup "CVP-[external number 2]" policy
digitParameterHandling numberingPlan "NANP_ACCESS"

commit

set addressContext "default" zone "EXTERNAL_ZONE" sipTrunkGroup "VZ_CARRIER" policy
digitParameterHandling numberingPlan "NANP_ACCESS" egressDmPmRule "Add_cc"

commit

set addressContext "default" zone "INTERNAL_ZONE" sipTrunkGroup "CVP" policy
digitParameterHandling numberingPlan "NANP_ACCESS"

commit

set addressContext "default" zone "INTERNAL_ZONE" sipTrunkGroup "CVP-[external number 2]" policy
callRouting elementRoutingPriority "DEFAULT_IP"

commit

set addressContext "default" zone "INTERNAL_ZONE" sipTrunkGroup "CVP" policy callRouting
elementRoutingPriority "DEFAULT_IP"

commit

set addressContext "default" zone "EXTERNAL_ZONE" sipTrunkGroup "VZ_CARRIER" policy callRouting
elementRoutingPriority "DEFAULT_IP"

commit

set addressContext "default" zone "INTERNAL_ZONE" sipTrunkGroup "CUCM" policy callRouting
elementRoutingPriority "DEFAULT_IP"

commit

set addressContext "default" zone "EXTERNAL_ZONE" sipTrunkGroup "VZ_CARRIER" media pcrf
pcrfCommitment "none" cushionPacketSize "disabled" cushionNullSdp "disabled"
```



```
commit

set addressContext "default" zone "INTERNAL_ZONE" sipTrunkGroup "CUCM" media pcrf pcrfCommitment
  "none" cushionPacketSize "disabled" cushionNullSdp "disabled"

commit

set addressContext "default" zone "INTERNAL_ZONE" sipTrunkGroup "CVP-[external number 2]" media
  pcrf pcrfCommitment "none" cushionPacketSize "disabled" cushionNullSdp "disabled"

commit

set addressContext "default" zone "INTERNAL_ZONE" sipTrunkGroup "CVP" media pcrf pcrfCommitment
  "none" cushionPacketSize "disabled" cushionNullSdp "disabled"

commit

set addressContext "default" zone "INTERNAL_ZONE" sipTrunkGroup "CVP" signaling methods message
  "allow" publish "allow" options "allow" refer "allow" subscribe "allow" notify "allow" info
  "allow" register "allow" update "allow"

commit

set addressContext "default" zone "INTERNAL_ZONE" sipTrunkGroup "CUCM" signaling methods message
  "allow" publish "allow" options "allow" refer "allow" subscribe "allow" notify "allow" info
  "allow" register "allow" update "allow"

commit

set addressContext "default" zone "INTERNAL_ZONE" sipTrunkGroup "CVP-[external number 2]"
  signaling methods message "allow" publish "allow" options "allow" refer "allow" subscribe
  "allow" notify "allow" info "allow" register "allow" update "allow"

commit

set addressContext "default" zone "EXTERNAL_ZONE" sipTrunkGroup "VZ_CARRIER" signaling methods
  message "allow" publish "allow" options "allow" refer "allow" subscribe "allow" notify "allow"
  info "allow" register "allow" update "allow"

commit

set addressContext "default" zone "INTERNAL_ZONE" sipTrunkGroup "CUCM" congestionHandling
  egressThrottling "disabled" retryAfterMin "10" retryAfterMax "30"

commit

set addressContext "default" zone "INTERNAL_ZONE" sipTrunkGroup "CVP" congestionHandling
  egressThrottling "disabled" retryAfterMin "10" retryAfterMax "30"

commit

set addressContext "default" zone "EXTERNAL_ZONE" sipTrunkGroup "VZ_CARRIER" congestionHandling
  egressThrottling "disabled" retryAfterMin "10" retryAfterMax "30"

commit

set addressContext "default" zone "INTERNAL_ZONE" sipTrunkGroup "CVP-[external number 2]"
  congestionHandling egressThrottling "disabled" retryAfterMin "10" retryAfterMax "30"

commit

#####
# global callRouting routingLabel
#####

set global callRouting routingLabel "RL_Test2-2" overflowNOA "none" overflowNPI "none"
  routePrioritizationType "sequence" action "routes"

commit

set global callRouting routingLabel "RL_[external number 2]" overflowNOA "none" overflowNPI "none"
  routePrioritizationType "sequence" action "routes"

commit

set global callRouting routingLabel "RL_ToCVP" overflowNOA "none" overflowNPI "none"
  routePrioritizationType "sequence" action "routes"

commit
```



```
set global callRouting routingLabel "RL_[external number 1]" overflowNOA "none" overflowNPI "none"
  routePrioritizationType "sequence" action "routes"

commit

set global callRouting routingLabel "RL_ToCUCM" overflowNOA "none" overflowNPI "none"
  routePrioritizationType "sequence" action "routes"

commit

set global callRouting routingLabel "RL_ToVZ" overflowNOA "none" overflowNPI "none"
  routePrioritizationType "sequence" action "routes"

commit

set global callRouting routingLabel "RL_Test7-16" overflowNOA "none" overflowNPI "none"
  routePrioritizationType "sequence" script "BLOCKING" action "script"

commit

set global callRouting routingLabel "RL_[external number 2]" routingLabelRoute "0" trunkGroup
  "CVP-[external number 2]" ipPeer "IPP_CVP" proportion "0" cost "1" inService "inService"
  testing "normal"

commit

set global callRouting routingLabel "RL_ToVZ" routingLabelRoute "0" trunkGroup "VZ_CARRIER"
  ipPeer "LD_VZ" proportion "0" cost "100000" inService "inService" testing "normal"

commit

set global callRouting routingLabel "RL_Test2-2" routingLabelRoute "1" trunkGroup "CVP" ipPeer
  "IPP_CVP" proportion "0" cost "1" inService "inService" testing "normal"

commit

set global callRouting routingLabel "RL_ToCVP" routingLabelRoute "0" trunkGroup "CVP" ipPeer
  "IPP_CVP" proportion "100" cost "100" inService "inService" testing "normal"

commit

set global callRouting routingLabel "RL_Test2-2" routingLabelRoute "0" trunkGroup "CUCM" ipPeer
  "IPP_CUCM" proportion "0" cost "1" inService "inService" testing "normal"

commit

set global callRouting routingLabel "RL_[external number 1]" routingLabelRoute "0" trunkGroup
  "CVP" ipPeer "IPP_CVP" proportion "0" cost "1" inService "inService" testing "normal"

commit

set global callRouting routingLabel "RL_ToCUCM" routingLabelRoute "0" trunkGroup "CUCM" ipPeer
  "IPP_CUCM" proportion "100" cost "100" inService "inService" testing "normal"

commit

#####
# global callRouting route
#####

set global callRouting route "none" "Sonus_NULL" "Sonus_NULL" "standard" "26" "1" "all" "all"
  "ALL" "none" "Sonus_NULL" routingLabel "RL_ToCUCM"

commit

set global callRouting route "none" "Sonus_NULL" "Sonus_NULL" "standard" "Sonus_NULL" "1" "all"
  "all" "ALL" "none" "Sonus_NULL" routingLabel "RL_ToVZ"

commit

set global callRouting route "none" "Sonus_NULL" "Sonus_NULL" "standard" "[external number 3]"
  "1" "all" "all" "ALL" "none" "Sonus_NULL" routingLabel "RL_Test7-16"

commit

set global callRouting route "none" "Sonus_NULL" "Sonus_NULL" "standard" "[external number 2]"
  "1" "all" "all" "ALL" "none" "Sonus_NULL" routingLabel "RL_[external number 2]"

commit
```




```
set global callRouting route "none" "Sonus_NULL" "Sonus_NULL" "standard" "1" "1" "all" "all" "ALL"
    "none" "Sonus_NULL" routingLabel "RL_ToCUCM"

commit

set global callRouting route "none" "Sonus_NULL" "Sonus_NULL" "standard" "[external number 1]"
    "1" "all" "all" "ALL" "none" "Sonus_NULL" routingLabel "RL_[external number 1]"

commit

set global callRouting route "none" "Sonus_NULL" "Sonus_NULL" "standard" "2690" "1" "all" "all"
    "ALL" "none" "Sonus_NULL" routingLabel "RL_ToCUCM"

commit

#####
# ipAccessControlList rule
#####

#####
# global country
#####

set global country "977" variableLengthDialPlan "enable"
commit

set global country "65" variableLengthDialPlan "enable"
commit

set global country "886" variableLengthDialPlan "enable"
commit

set global country "975" variableLengthDialPlan "enable"
commit

set global country "63" variableLengthDialPlan "enable"
commit

set global country "258" variableLengthDialPlan "enable"
commit

set global country "973" variableLengthDialPlan "enable"
commit

set global country "7" variableLengthDialPlan "enable"
commit

set global country "61" variableLengthDialPlan "enable"
commit

set global country "48" variableLengthDialPlan "enable"
commit

set global country "689" variableLengthDialPlan "enable"
commit

set global country "256" variableLengthDialPlan "enable"
commit

set global country "598" variableLengthDialPlan "enable"
commit

set global country "971" variableLengthDialPlan "enable"
```



```
commit
set global country "46" variableLengthDialPlan "enable"
commit
set global country "880" variableLengthDialPlan "enable"
commit
set global country "687" variableLengthDialPlan "enable"
commit
set global country "254" variableLengthDialPlan "enable"
commit
set global country "596" variableLengthDialPlan "enable"
commit
set global country "44" variableLengthDialPlan "enable"
commit
set global country "685" variableLengthDialPlan "enable"
commit
set global country "252" variableLengthDialPlan "enable"
commit
set global country "239" variableLengthDialPlan "enable"
commit
set global country "594" variableLengthDialPlan "enable"
commit
set global country "1" variableLengthDialPlan "disable"
commit
set global country "683" variableLengthDialPlan "enable"
commit
set global country "508" variableLengthDialPlan "enable"
commit
set global country "250" variableLengthDialPlan "enable"
commit
set global country "237" variableLengthDialPlan "enable"
commit
set global country "592" variableLengthDialPlan "enable"
commit
set global country "40" variableLengthDialPlan "enable"
commit
set global country "681" variableLengthDialPlan "enable"
commit
set global country "27" variableLengthDialPlan "enable"
commit
set global country "506" variableLengthDialPlan "enable"
commit
set global country "98" variableLengthDialPlan "enable"
commit
```



```
set global country "235" variableLengthDialPlan "enable"
commit
set global country "590" variableLengthDialPlan "enable"
commit
set global country "504" variableLengthDialPlan "enable"
commit
set global country "233" variableLengthDialPlan "enable"
commit
set global country "502" variableLengthDialPlan "enable"
commit
set global country "94" variableLengthDialPlan "enable"
commit
set global country "231" variableLengthDialPlan "enable"
commit
set global country "218" variableLengthDialPlan "enable"
commit
set global country "500" variableLengthDialPlan "enable"
commit
set global country "92" variableLengthDialPlan "enable"
commit
set global country "216" variableLengthDialPlan "enable"
commit
set global country "378" variableLengthDialPlan "enable"
commit
set global country "90" variableLengthDialPlan "enable"
commit
set global country "376" variableLengthDialPlan "enable"
commit
set global country "212" variableLengthDialPlan "enable"
commit
set global country "374" variableLengthDialPlan "enable"
commit
set global country "372" variableLengthDialPlan "enable"
commit
set global country "359" variableLengthDialPlan "enable"
commit
set global country "268" variableLengthDialPlan "enable"
commit
set global country "370" variableLengthDialPlan "enable"
commit
set global country "58" variableLengthDialPlan "enable"
commit
set global country "357" variableLengthDialPlan "enable"
```



```
commit
set global country "266" variableLengthDialPlan "enable"
commit
set global country "968" variableLengthDialPlan "enable"
commit
set global country "56" variableLengthDialPlan "enable"
commit
set global country "355" variableLengthDialPlan "enable"
commit
set global country "264" variableLengthDialPlan "enable"
commit
set global country "966" variableLengthDialPlan "enable"
commit
set global country "54" variableLengthDialPlan "enable"
commit
set global country "353" variableLengthDialPlan "enable"
commit
set global country "262" variableLengthDialPlan "enable"
commit
set global country "249" variableLengthDialPlan "enable"
commit
set global country "964" variableLengthDialPlan "enable"
commit
set global country "52" variableLengthDialPlan "enable"
commit
set global country "351" variableLengthDialPlan "enable"
commit
set global country "39" variableLengthDialPlan "enable"
commit
set global country "260" variableLengthDialPlan "enable"
commit
set global country "247" variableLengthDialPlan "enable"
commit
set global country "962" variableLengthDialPlan "enable"
commit
set global country "691" variableLengthDialPlan "enable"
commit
set global country "678" variableLengthDialPlan "enable"
commit
set global country "245" variableLengthDialPlan "enable"
commit
set global country "960" variableLengthDialPlan "enable"
commit
```



```
set global country "676" variableLengthDialPlan "enable"
commit
set global country "856" variableLengthDialPlan "enable"
commit
set global country "243" variableLengthDialPlan "enable"
commit
set global country "423" variableLengthDialPlan "enable"
commit
set global country "33" variableLengthDialPlan "enable"
commit
set global country "674" variableLengthDialPlan "enable"
commit
set global country "241" variableLengthDialPlan "enable"
commit
set global country "228" variableLengthDialPlan "enable"
commit
set global country "421" variableLengthDialPlan "enable"
commit
set global country "299" variableLengthDialPlan "enable"
commit
set global country "31" variableLengthDialPlan "enable"
commit
set global country "672" variableLengthDialPlan "enable"
commit
set global country "852" variableLengthDialPlan "enable"
commit
set global country "226" variableLengthDialPlan "enable"
commit
set global country "297" variableLengthDialPlan "enable"
commit
set global country "670" variableLengthDialPlan "enable"
commit
set global country "850" variableLengthDialPlan "enable"
commit
set global country "224" variableLengthDialPlan "enable"
commit
set global country "386" variableLengthDialPlan "enable"
commit
set global country "222" variableLengthDialPlan "enable"
commit
set global country "995" variableLengthDialPlan "enable"
commit
set global country "220" variableLengthDialPlan "enable"
```



```
commit
set global country "291" variableLengthDialPlan "enable"
commit
set global country "993" variableLengthDialPlan "enable"
commit
set global country "81" variableLengthDialPlan "enable"
commit
set global country "380" variableLengthDialPlan "enable"
commit
set global country "66" variableLengthDialPlan "enable"
commit
set global country "976" variableLengthDialPlan "enable"
commit
set global country "64" variableLengthDialPlan "enable"
commit
set global country "974" variableLengthDialPlan "enable"
commit
set global country "62" variableLengthDialPlan "enable"
commit
set global country "49" variableLengthDialPlan "enable"
commit
set global country "257" variableLengthDialPlan "enable"
commit
set global country "599" variableLengthDialPlan "enable"
commit
set global country "972" variableLengthDialPlan "enable"
commit
set global country "60" variableLengthDialPlan "enable"
commit
set global country "47" variableLengthDialPlan "enable"
commit
set global country "688" variableLengthDialPlan "enable"
commit
set global country "255" variableLengthDialPlan "enable"
commit
set global country "597" variableLengthDialPlan "enable"
commit
set global country "45" variableLengthDialPlan "enable"
commit
set global country "686" variableLengthDialPlan "enable"
commit
set global country "253" variableLengthDialPlan "enable"
commit
```



```
set global country "595" variableLengthDialPlan "enable"
commit
set global country "43" variableLengthDialPlan "enable"
commit
set global country "684" variableLengthDialPlan "enable"
commit
set global country "509" variableLengthDialPlan "enable"
commit
set global country "251" variableLengthDialPlan "enable"
commit
set global country "238" variableLengthDialPlan "enable"
commit
set global country "593" variableLengthDialPlan "enable"
commit
set global country "41" variableLengthDialPlan "enable"
commit
set global country "682" variableLengthDialPlan "enable"
commit
set global country "507" variableLengthDialPlan "enable"
commit
set global country "236" variableLengthDialPlan "enable"
commit
set global country "591" variableLengthDialPlan "enable"
commit
set global country "680" variableLengthDialPlan "enable"
commit
set global country "505" variableLengthDialPlan "enable"
commit
set global country "234" variableLengthDialPlan "enable"
commit
set global country "503" variableLengthDialPlan "enable"
commit
set global country "95" variableLengthDialPlan "enable"
commit
set global country "232" variableLengthDialPlan "enable"
commit
set global country "501" variableLengthDialPlan "enable"
commit
set global country "93" variableLengthDialPlan "enable"
commit
set global country "230" variableLengthDialPlan "enable"
commit
set global country "379" variableLengthDialPlan "enable"
```



```
commit
set global country "20" variableLengthDialPlan "enable"
commit
set global country "91" variableLengthDialPlan "enable"
commit
set global country "377" variableLengthDialPlan "enable"
commit
set global country "213" variableLengthDialPlan "enable"
commit
set global country "375" variableLengthDialPlan "enable"
commit
set global country "373" variableLengthDialPlan "enable"
commit
set global country "269" variableLengthDialPlan "enable"
commit
set global country "371" variableLengthDialPlan "enable"
commit
set global country "358" variableLengthDialPlan "enable"
commit
set global country "267" variableLengthDialPlan "enable"
commit
set global country "57" variableLengthDialPlan "enable"
commit
set global country "356" variableLengthDialPlan "enable"
commit
set global country "265" variableLengthDialPlan "enable"
commit
set global country "967" variableLengthDialPlan "enable"
commit
set global country "55" variableLengthDialPlan "enable"
commit
set global country "354" variableLengthDialPlan "enable"
commit
set global country "263" variableLengthDialPlan "enable"
commit
set global country "965" variableLengthDialPlan "enable"
commit
set global country "53" variableLengthDialPlan "enable"
commit
set global country "352" variableLengthDialPlan "enable"
commit
set global country "261" variableLengthDialPlan "enable"
commit
```




```
set global country "248" variableLengthDialPlan "enable"
commit
set global country "963" variableLengthDialPlan "enable"
commit
set global country "51" variableLengthDialPlan "enable"
commit
set global country "350" variableLengthDialPlan "enable"
commit
set global country "692" variableLengthDialPlan "enable"
commit
set global country "679" variableLengthDialPlan "enable"
commit
set global country "246" variableLengthDialPlan "enable"
commit
set global country "961" variableLengthDialPlan "enable"
commit
set global country "690" variableLengthDialPlan "enable"
commit
set global country "36" variableLengthDialPlan "enable"
commit
set global country "677" variableLengthDialPlan "enable"
commit
set global country "244" variableLengthDialPlan "enable"
commit
set global country "34" variableLengthDialPlan "enable"
commit
set global country "675" variableLengthDialPlan "enable"
commit
set global country "855" variableLengthDialPlan "enable"
commit
set global country "242" variableLengthDialPlan "enable"
commit
set global country "229" variableLengthDialPlan "enable"
commit
set global country "32" variableLengthDialPlan "enable"
commit
set global country "673" variableLengthDialPlan "enable"
commit
set global country "853" variableLengthDialPlan "enable"
commit
set global country "240" variableLengthDialPlan "enable"
commit
set global country "227" variableLengthDialPlan "enable"
```



```
commit
set global country "389" variableLengthDialPlan "enable"
commit
set global country "420" variableLengthDialPlan "enable"
commit
set global country "298" variableLengthDialPlan "enable"
commit
set global country "30" variableLengthDialPlan "enable"
commit
set global country "6723" variableLengthDialPlan "enable"
commit
set global country "225" variableLengthDialPlan "enable"
commit
set global country "387" variableLengthDialPlan "enable"
commit
set global country "998" variableLengthDialPlan "enable"
commit
set global country "6721" variableLengthDialPlan "enable"
commit
set global country "86" variableLengthDialPlan "enable"
commit
set global country "223" variableLengthDialPlan "enable"
commit
set global country "385" variableLengthDialPlan "enable"
commit
set global country "996" variableLengthDialPlan "enable"
commit
set global country "84" variableLengthDialPlan "enable"
commit
set global country "221" variableLengthDialPlan "enable"
commit
set global country "994" variableLengthDialPlan "enable"
commit
set global country "82" variableLengthDialPlan "enable"
commit
set global country "381" variableLengthDialPlan "enable"
commit
set global country "290" variableLengthDialPlan "enable"
commit
set global country "992" variableLengthDialPlan "enable"
commit
set global country "243" listOfNumberOfDigitsToMatch called "0" calling "0"
commit
```



```
set global country "247" listOfNumberOfDigitsToMatch called "0" calling "0"
commit
set global country "45" listOfNumberOfDigitsToMatch called "0" calling "0"
commit
set global country "41" listOfNumberOfDigitsToMatch called "0" calling "0"
commit
set global country "49" listOfNumberOfDigitsToMatch called "0" calling "0"
commit
set global country "233" listOfNumberOfDigitsToMatch called "0" calling "0"
commit
set global country "237" listOfNumberOfDigitsToMatch called "0" calling "0"
commit
set global country "31" listOfNumberOfDigitsToMatch called "0" calling "0"
commit
set global country "223" listOfNumberOfDigitsToMatch called "0" calling "0"
commit
set global country "227" listOfNumberOfDigitsToMatch called "0" calling "0"
commit
set global country "213" listOfNumberOfDigitsToMatch called "0" calling "0"
commit
set global country "502" listOfNumberOfDigitsToMatch called "0" calling "0"
commit
set global country "506" listOfNumberOfDigitsToMatch called "0" calling "0"
commit
set global country "420" listOfNumberOfDigitsToMatch called "0" calling "0"
commit
set global country "994" listOfNumberOfDigitsToMatch called "0" calling "0"
commit
set global country "691" listOfNumberOfDigitsToMatch called "0" calling "0"
commit
set global country "689" listOfNumberOfDigitsToMatch called "0" calling "0"
commit
set global country "685" listOfNumberOfDigitsToMatch called "0" calling "0"
commit
set global country "681" listOfNumberOfDigitsToMatch called "0" calling "0"
commit
set global country "386" listOfNumberOfDigitsToMatch called "0" calling "0"
commit
set global country "39" listOfNumberOfDigitsToMatch called "0" calling "0"
commit
set global country "974" listOfNumberOfDigitsToMatch called "0" calling "0"
commit
set global country "679" listOfNumberOfDigitsToMatch called "0" calling "0"
```



```
commit
set global country "675" listOfNumberOfDigitsToMatch called "0" calling "0"
commit
set global country "376" listOfNumberOfDigitsToMatch called "0" calling "0"
commit
set global country "372" listOfNumberOfDigitsToMatch called "0" calling "0"
commit
set global country "593" listOfNumberOfDigitsToMatch called "0" calling "0"
commit
set global country "964" listOfNumberOfDigitsToMatch called "0" calling "0"
commit
set global country "960" listOfNumberOfDigitsToMatch called "0" calling "0"
commit
set global country "290" listOfNumberOfDigitsToMatch called "0" calling "0"
commit
set global country "298" listOfNumberOfDigitsToMatch called "0" calling "0"
commit
set global country "92" listOfNumberOfDigitsToMatch called "0" calling "0"
commit
set global country "82" listOfNumberOfDigitsToMatch called "0" calling "0"
commit
set global country "356" listOfNumberOfDigitsToMatch called "0" calling "0"
commit
set global country "352" listOfNumberOfDigitsToMatch called "0" calling "0"
commit
set global country "264" listOfNumberOfDigitsToMatch called "0" calling "0"
commit
set global country "260" listOfNumberOfDigitsToMatch called "0" calling "0"
commit
set global country "998" listOfNumberOfDigitsToMatch called "0" calling "0"
commit
set global country "254" listOfNumberOfDigitsToMatch called "0" calling "0"
commit
set global country "250" listOfNumberOfDigitsToMatch called "0" calling "0"
commit
set global country "244" listOfNumberOfDigitsToMatch called "0" calling "0"
commit
set global country "240" listOfNumberOfDigitsToMatch called "0" calling "0"
commit
set global country "7" listOfNumberOfDigitsToMatch called "0" calling "0"
commit
set global country "234" listOfNumberOfDigitsToMatch called "0" calling "0"
commit
```



```
set global country "230" listOfNumberOfDigitsToMatch called "0" calling "0"  
commit  
set global country "597" listOfNumberOfDigitsToMatch called "0" calling "0"  
commit  
set global country "968" listOfNumberOfDigitsToMatch called "0" calling "0"  
commit  
set global country "224" listOfNumberOfDigitsToMatch called "0" calling "0"  
commit  
set global country "220" listOfNumberOfDigitsToMatch called "0" calling "0"  
commit  
set global country "886" listOfNumberOfDigitsToMatch called "0" calling "0"  
commit  
set global country "86" listOfNumberOfDigitsToMatch called "0" calling "0"  
commit  
set global country "268" listOfNumberOfDigitsToMatch called "0" calling "0"  
commit  
set global country "66" listOfNumberOfDigitsToMatch called "0" calling "0"  
commit  
set global country "62" listOfNumberOfDigitsToMatch called "0" calling "0"  
commit  
set global country "856" listOfNumberOfDigitsToMatch called "0" calling "0"  
commit  
set global country "852" listOfNumberOfDigitsToMatch called "0" calling "0"  
commit  
set global country "258" listOfNumberOfDigitsToMatch called "0" calling "0"  
commit  
set global country "56" listOfNumberOfDigitsToMatch called "0" calling "0"  
commit  
set global country "52" listOfNumberOfDigitsToMatch called "0" calling "0"  
commit  
set global country "692" listOfNumberOfDigitsToMatch called "0" calling "0"  
commit  
set global country "248" listOfNumberOfDigitsToMatch called "0" calling "0"  
commit  
set global country "46" listOfNumberOfDigitsToMatch called "0" calling "0"  
commit  
set global country "238" listOfNumberOfDigitsToMatch called "0" calling "0"  
commit  
set global country "36" listOfNumberOfDigitsToMatch called "0" calling "0"  
commit  
set global country "32" listOfNumberOfDigitsToMatch called "0" calling "0"  
commit  
set global country "373" listOfNumberOfDigitsToMatch called "0" calling "0"
```



```
commit
set global country "228" listOfNumberOfDigitsToMatch called "0" calling "0"
commit
set global country "218" listOfNumberOfDigitsToMatch called "0" calling "0"
commit
set global country "503" listOfNumberOfDigitsToMatch called "0" calling "0"
commit
set global country "507" listOfNumberOfDigitsToMatch called "0" calling "0"
commit
set global country "353" listOfNumberOfDigitsToMatch called "0" calling "0"
commit
set global country "421" listOfNumberOfDigitsToMatch called "0" calling "0"
commit
set global country "995" listOfNumberOfDigitsToMatch called "0" calling "0"
commit
set global country "686" listOfNumberOfDigitsToMatch called "0" calling "0"
commit
set global country "682" listOfNumberOfDigitsToMatch called "0" calling "0"
commit
set global country "387" listOfNumberOfDigitsToMatch called "0" calling "0"
commit
set global country "975" listOfNumberOfDigitsToMatch called "0" calling "0"
commit
set global country "971" listOfNumberOfDigitsToMatch called "0" calling "0"
commit
set global country "676" listOfNumberOfDigitsToMatch called "0" calling "0"
commit
set global country "672" listOfNumberOfDigitsToMatch called "0" calling "0"
commit
set global country "377" listOfNumberOfDigitsToMatch called "0" calling "0"
commit
set global country "594" listOfNumberOfDigitsToMatch called "0" calling "0"
commit
set global country "590" listOfNumberOfDigitsToMatch called "0" calling "0"
commit
set global country "598" listOfNumberOfDigitsToMatch called "0" calling "0"
commit
set global country "965" listOfNumberOfDigitsToMatch called "0" calling "0"
commit
set global country "961" listOfNumberOfDigitsToMatch called "0" calling "0"
commit
set global country "291" listOfNumberOfDigitsToMatch called "0" calling "0"
commit
```



```
set global country "299" listOfNumberOfDigitsToMatch called "0" calling "0"
commit
set global country "93" listOfNumberOfDigitsToMatch called "0" calling "0"
commit
set global country "357" listOfNumberOfDigitsToMatch called "0" calling "0"
commit
set global country "261" listOfNumberOfDigitsToMatch called "0" calling "0"
commit
set global country "269" listOfNumberOfDigitsToMatch called "0" calling "0"
commit
set global country "265" listOfNumberOfDigitsToMatch called "0" calling "0"
commit
set global country "63" listOfNumberOfDigitsToMatch called "0" calling "0"
commit
set global country "251" listOfNumberOfDigitsToMatch called "0" calling "0"
commit
set global country "255" listOfNumberOfDigitsToMatch called "0" calling "0"
commit
set global country "53" listOfNumberOfDigitsToMatch called "0" calling "0"
commit
set global country "241" listOfNumberOfDigitsToMatch called "0" calling "0"
commit
set global country "245" listOfNumberOfDigitsToMatch called "0" calling "0"
commit
set global country "43" listOfNumberOfDigitsToMatch called "0" calling "0"
commit
set global country "231" listOfNumberOfDigitsToMatch called "0" calling "0"
commit
set global country "235" listOfNumberOfDigitsToMatch called "0" calling "0"
commit
set global country "6721" listOfNumberOfDigitsToMatch called "0" calling "0"
commit
set global country "221" listOfNumberOfDigitsToMatch called "0" calling "0"
commit
set global country "225" listOfNumberOfDigitsToMatch called "0" calling "0"
commit
set global country "500" listOfNumberOfDigitsToMatch called "0" calling "0"
commit
set global country "853" listOfNumberOfDigitsToMatch called "0" calling "0"
commit
set global country "57" listOfNumberOfDigitsToMatch called "0" calling "0"
commit
set global country "992" listOfNumberOfDigitsToMatch called "0" calling "0"
```



```
commit
set global country "249" listOfNumberOfDigitsToMatch called "0" calling "0"
commit
set global country "47" listOfNumberOfDigitsToMatch called "0" calling "0"
commit
set global country "683" listOfNumberOfDigitsToMatch called "0" calling "0"
commit
set global country "239" listOfNumberOfDigitsToMatch called "0" calling "0"
commit
set global country "380" listOfNumberOfDigitsToMatch called "0" calling "0"
commit
set global country "33" listOfNumberOfDigitsToMatch called "0" calling "0"
commit
set global country "673" listOfNumberOfDigitsToMatch called "0" calling "0"
commit
set global country "374" listOfNumberOfDigitsToMatch called "0" calling "0"
commit
set global country "229" listOfNumberOfDigitsToMatch called "0" calling "0"
commit
set global country "370" listOfNumberOfDigitsToMatch called "0" calling "0"
commit
set global country "27" listOfNumberOfDigitsToMatch called "0" calling "0"
commit
set global country "504" listOfNumberOfDigitsToMatch called "0" calling "0"
commit
set global country "508" listOfNumberOfDigitsToMatch called "0" calling "0"
commit
set global country "354" listOfNumberOfDigitsToMatch called "0" calling "0"
commit
set global country "350" listOfNumberOfDigitsToMatch called "0" calling "0"
commit
set global country "996" listOfNumberOfDigitsToMatch called "0" calling "0"
commit
set global country "687" listOfNumberOfDigitsToMatch called "0" calling "0"
commit
set global country "976" listOfNumberOfDigitsToMatch called "0" calling "0"
commit
set global country "972" listOfNumberOfDigitsToMatch called "0" calling "0"
commit
set global country "677" listOfNumberOfDigitsToMatch called "0" calling "0"
commit
set global country "1" listOfNumberOfDigitsToMatch called "10,6,3,0" calling "10,6,3,0"
commit
```




```
set global country "378" listOfNumberOfDigitsToMatch called "0" calling "0"
commit
set global country "595" listOfNumberOfDigitsToMatch called "0" calling "0"
commit
set global country "591" listOfNumberOfDigitsToMatch called "0" calling "0"
commit
set global country "599" listOfNumberOfDigitsToMatch called "0" calling "0"
commit
set global country "966" listOfNumberOfDigitsToMatch called "0" calling "0"
commit
set global country "962" listOfNumberOfDigitsToMatch called "0" calling "0"
commit
set global country "98" listOfNumberOfDigitsToMatch called "0" calling "0"
commit
set global country "94" listOfNumberOfDigitsToMatch called "0" calling "0"
commit
set global country "90" listOfNumberOfDigitsToMatch called "0" calling "0"
commit
set global country "880" listOfNumberOfDigitsToMatch called "0" calling "0"
commit
set global country "84" listOfNumberOfDigitsToMatch called "0" calling "0"
commit
set global country "358" listOfNumberOfDigitsToMatch called "0" calling "0"
commit
set global country "262" listOfNumberOfDigitsToMatch called "0" calling "0"
commit
set global country "266" listOfNumberOfDigitsToMatch called "0" calling "0"
commit
set global country "64" listOfNumberOfDigitsToMatch called "0" calling "0"
commit
set global country "60" listOfNumberOfDigitsToMatch called "0" calling "0"
commit
set global country "850" listOfNumberOfDigitsToMatch called "0" calling "0"
commit
set global country "252" listOfNumberOfDigitsToMatch called "0" calling "0"
commit
set global country "256" listOfNumberOfDigitsToMatch called "0" calling "0"
commit
set global country "54" listOfNumberOfDigitsToMatch called "0" calling "0"
commit
set global country "242" listOfNumberOfDigitsToMatch called "0" calling "0"
commit
set global country "246" listOfNumberOfDigitsToMatch called "0" calling "0"
```



```
commit
set global country "44" listOfNumberOfDigitsToMatch called "0" calling "0"
commit
set global country "40" listOfNumberOfDigitsToMatch called "0" calling "0"
commit
set global country "232" listOfNumberOfDigitsToMatch called "0" calling "0"
commit
set global country "236" listOfNumberOfDigitsToMatch called "0" calling "0"
commit
set global country "34" listOfNumberOfDigitsToMatch called "0" calling "0"
commit
set global country "30" listOfNumberOfDigitsToMatch called "0" calling "0"
commit
set global country "222" listOfNumberOfDigitsToMatch called "0" calling "0"
commit
set global country "226" listOfNumberOfDigitsToMatch called "0" calling "0"
commit
set global country "20" listOfNumberOfDigitsToMatch called "0" calling "0"
commit
set global country "212" listOfNumberOfDigitsToMatch called "0" calling "0"
commit
set global country "216" listOfNumberOfDigitsToMatch called "0" calling "0"
commit
set global country "501" listOfNumberOfDigitsToMatch called "0" calling "0"
commit
set global country "58" listOfNumberOfDigitsToMatch called "0" calling "0"
commit
set global country "993" listOfNumberOfDigitsToMatch called "0" calling "0"
commit
set global country "690" listOfNumberOfDigitsToMatch called "0" calling "0"
commit
set global country "48" listOfNumberOfDigitsToMatch called "0" calling "0"
commit
set global country "684" listOfNumberOfDigitsToMatch called "0" calling "0"
commit
set global country "680" listOfNumberOfDigitsToMatch called "0" calling "0"
commit
set global country "385" listOfNumberOfDigitsToMatch called "0" calling "0"
commit
set global country "381" listOfNumberOfDigitsToMatch called "0" calling "0"
commit
set global country "389" listOfNumberOfDigitsToMatch called "0" calling "0"
commit
```



```
set global country "973" listOfNumberOfDigitsToMatch called "0" calling "0"
commit
set global country "674" listOfNumberOfDigitsToMatch called "0" calling "0"
commit
set global country "670" listOfNumberOfDigitsToMatch called "0" calling "0"
commit
set global country "375" listOfNumberOfDigitsToMatch called "0" calling "0"
commit
set global country "371" listOfNumberOfDigitsToMatch called "0" calling "0"
commit
set global country "379" listOfNumberOfDigitsToMatch called "0" calling "0"
commit
set global country "592" listOfNumberOfDigitsToMatch called "0" calling "0"
commit
set global country "91" listOfNumberOfDigitsToMatch called "0" calling "0"
commit
set global country "509" listOfNumberOfDigitsToMatch called "0" calling "0"
commit
set global country "505" listOfNumberOfDigitsToMatch called "0" calling "0"
commit
set global country "355" listOfNumberOfDigitsToMatch called "0" calling "0"
commit
set global country "351" listOfNumberOfDigitsToMatch called "0" calling "0"
commit
set global country "359" listOfNumberOfDigitsToMatch called "0" calling "0"
commit
set global country "423" listOfNumberOfDigitsToMatch called "0" calling "0"
commit
set global country "263" listOfNumberOfDigitsToMatch called "0" calling "0"
commit
set global country "253" listOfNumberOfDigitsToMatch called "0" calling "0"
commit
set global country "688" listOfNumberOfDigitsToMatch called "0" calling "0"
commit
set global country "977" listOfNumberOfDigitsToMatch called "0" calling "0"
commit
set global country "678" listOfNumberOfDigitsToMatch called "0" calling "0"
commit
set global country "6723" listOfNumberOfDigitsToMatch called "0" calling "0"
commit
set global country "596" listOfNumberOfDigitsToMatch called "0" calling "0"
commit
set global country "967" listOfNumberOfDigitsToMatch called "0" calling "0"
```



```
commit
set global country "963" listOfNumberOfDigitsToMatch called "0" calling "0"
commit
set global country "297" listOfNumberOfDigitsToMatch called "0" calling "0"
commit
set global country "95" listOfNumberOfDigitsToMatch called "0" calling "0"
commit
set global country "81" listOfNumberOfDigitsToMatch called "0" calling "0"
commit
set global country "267" listOfNumberOfDigitsToMatch called "0" calling "0"
commit
set global country "65" listOfNumberOfDigitsToMatch called "0" calling "0"
commit
set global country "61" listOfNumberOfDigitsToMatch called "0" calling "0"
commit
set global country "855" listOfNumberOfDigitsToMatch called "0" calling "0"
commit
set global country "257" listOfNumberOfDigitsToMatch called "0" calling "0"
commit
set global country "55" listOfNumberOfDigitsToMatch called "0" calling "0"
commit
set global country "51" listOfNumberOfDigitsToMatch called "0" calling "0"
commit

#####
# set profiles media
#####
set profiles media announcementPackage "DEFAULT" packageId "1"
commit
set profiles media tonePackage "DEFAULT" packageId "1"
commit
set profiles media toneAndAnnouncementProfile "DEFAULT_TNA_PROFILE"
commit
set profiles media toneAndAnnouncementProfile "DEFAULT_TNA_PROFILE" localRingBackTone
signalingTonePackageState "enable" signalingTonePackage "DEFAULT" precedence "lower"
makeInbandToneAvailable "enable"
commit
set profiles media toneAndAnnouncementProfile "DEFAULT_TNA_PROFILE" localRingBackTone flags
useThisLrbtForEgress "disable" useThisLrbtForIngress "enable"
commit
set profiles media toneAndAnnouncementProfile "DEFAULT_TNA_PROFILE" toneAndAnnouncement
announcementPackageState "enable" announcementPackage "DEFAULT" sigTonePackage "DEFAULT"
override "disable"
commit
set profiles media announcementPackage "DEFAULT" element "empty" segmentId "11111"
```



```
commit
set profiles media tonePackage "DEFAULT" toneType "callWaiting4" toneProfile "defCallWaiting4"
commit
set profiles media tonePackage "DEFAULT" toneType "dial" toneProfile "defDial"
commit
set profiles media tonePackage "DEFAULT" toneType "ring" toneProfile "defRing"
commit
set profiles media tonePackage "DEFAULT" toneType "sit1" toneProfile "defSit1"
commit
set profiles media tonePackage "DEFAULT" toneType "sit2" toneProfile "defSit2"
commit
set profiles media tonePackage "DEFAULT" toneType "callWaiting1" toneProfile "defCallWaiting1"
commit
set profiles media tonePackage "DEFAULT" toneType "sit3" toneProfile "defSit3"
commit
set profiles media tonePackage "DEFAULT" toneType "busy" toneProfile "defBusy"
commit
set profiles media tonePackage "DEFAULT" toneType "callWaiting2" toneProfile "defCallWaiting2"
commit
set profiles media tonePackage "DEFAULT" toneType "reorder" toneProfile "defReorder"
commit
set profiles media tonePackage "DEFAULT" toneType "cpeAlerting" toneProfile "defCpeAlerting"
commit
set profiles media tonePackage "DEFAULT" toneType "callWaiting3" toneProfile "defCallWaiting3"
commit

#####
# set oam eventLog
#####
set oam eventLog typeAdmin "acct" state "enabled"
commit
set oam eventLog typeAdmin "security" state "enabled"
commit
set oam eventLog typeAdmin "debug" state "enabled" fileSize "20480" filterLevel "info"
commit
set oam eventLog typeAdmin "packet" state "enabled"
commit
set oam eventLog typeAdmin "trace" state "enabled" filterLevel "info"
commit
set oam eventLog typeAdmin "system" state "enabled"
commit
set oam eventLog typeAdmin "audit" state "enabled" filterLevel "info"
commit
```



```
#####
# profiles signaling numberGlobalizationProfile
#####
commit

#####
# Everything else
#####
set addressContext "default"
commit
set addressContext "default" dnsGroup "DNS_GROUP_DEFAULT" type "mgmt"
commit
set profiles digitParameterHandling dmPmCriteria "Callednumber_under10" criteriaType "digit"
    digitType "calledNumber" parameterPresenceCheck "exists"
commit
set profiles services disconnectTreatmentProfile "h323Default"
commit
set profiles services disconnectTreatmentProfile "sipDefault"
commit
set reason=unconditional;counter=1"
commit
set profiles digitParameterHandling dmPmCriteria "Callednumber_under10" digitCriteria
    natureOfAddress value "950" operation "ignore"
commit
set profiles callParameterFilterProfile "SIP_MSG_TYPE_MESSAGE" description "SIP Message Type is
    Message"
commit
set addressContext "default" zone "INTERNAL_ZONE" cac callLimit "unlimited" bandwidthLimit
    "unlimited" callLimitThreshold "0" bandwidthLimitThreshold "0" emergencyOversubscription
    "10" registrationLimit "unlimited"
commit
set addressContext "default" zone "EXTERNAL_ZONE" cac callLimit "unlimited" bandwidthLimit
    "unlimited" callLimitThreshold "0" bandwidthLimitThreshold "0" emergencyOversubscription
    "10" registrationLimit "unlimited"
commit
set profiles digitParameterHandling dmPmCriteria "Callednumber_under10" digitCriteria
    numberLength value "10" operation "ignore"
commit
set addressContext "default" dnsGroup "DNS_GROUP_DEFAULT" server "DNS2" state "enabled"
    recursionDesired "true" ipAddress "10.85.0.232" priority "40" weight "50"
commit
set addressContext "default" dnsGroup "DNS_GROUP_DEFAULT" server "DNS1" state "enabled"
    recursionDesired "true" ipAddress "10.64.1.3" priority "80" weight "50"
commit
set profiles digitParameterHandling dmPmCriteria "Callednumber_under10" digitCriteria egressFlag
    value "send" operation "ignore"
commit
```



```
set profiles digitParameterHandling dmPmCriteria "Callednumber_under10" digitCriteria
  presentationMatch value "none" operation "ignore"

commit

set oam snmp trapTarget "emaTarget" ipAddress "127.0.0.1" port "162" trapType "v2" state "enabled"

commit

set profiles digitParameterHandling dmPmCriteria "Callednumber_under10" digitCriteria digitMatch
  operation "ignore"

commit

set profiles digitParameterHandling dmPmCriteria "Callednumber_under10" digitCriteria digitMatch
  value startDigitPosition "0" numberOfDigits "0"

commit

set addressContext "default" zone "INTERNAL_ZONE" cac egress callLimit "unlimited"
  emergencyOversubscription "10" callRateMax "unlimited" callBurstMax "unlimited"
  registerRateMax "unlimited" registerBurstMax "unlimited"

commit

set addressContext "default" zone "EXTERNAL_ZONE" cac egress callLimit "unlimited"
  emergencyOversubscription "10" callRateMax "unlimited" callBurstMax "unlimited"
  registerRateMax "unlimited" registerBurstMax "unlimited"

commit

set addressContext "default" zone "EXTERNAL_ZONE" cac ingress callLimit "unlimited"
  emergencyOversubscription "10" callRateMax "unlimited" callBurstMax "unlimited"
  registerRateMax "unlimited" registerBurstMax "unlimited" packetRateMax "unlimited"

commit

set addressContext "default" zone "INTERNAL_ZONE" cac ingress callLimit "unlimited"
  emergencyOversubscription "10" callRateMax "unlimited" callBurstMax "unlimited"
  registerRateMax "unlimited" registerBurstMax "unlimited" packetRateMax "unlimited"

commit

set profiles digitParameterHandling dmPmCriteria "Callednumber_under10" digitCriteria
  numberingPlanIndicator value "data" operation "ignore"

commit

set profiles digitParameterHandling dmPmCriteria "Callednumber_under10" digitCriteria
  screeningMatch value "none" operation "ignore"

commit

set profiles signaling sctpProfile "defaultSctpProfile" outboundStreams "1" inboundStreams "1"
  peerTransportAddresses "1" retransmissionsPerPath "8" heartbeatInterval "4" orderedDelivery
  "disabled" sackDelay "disabled" retransmissionsPerAssociation "0" rtoInitial "50" rtoMin "10"
  rtoMax "200" initRetry "8" pathMtu "1500" idleTimeout "3600"

commit

exit
```





Acronyms

Acronym	Definitions
SIP	Session Initiation Protocol
SCCP	Skinny Client Control Protocol
CUCM	Cisco Unified Communications Manager
CUBE	Cisco Unified Border Element
CVP	Cisco Unified Customer Voice Portal
UCCE	Cisco Unified Contact Center Enterprise

Important Information

THE SPECIFICATIONS AND INFORMATION REGARDING THE PRODUCTS IN THIS MANUAL ARE SUBJECT TO CHANGE WITHOUT NOTICE. ALL STATEMENTS, INFORMATION, AND RECOMMENDATIONS IN THIS MANUAL ARE BELIEVED TO BE ACCURATE BUT ARE PRESENTED WITHOUT WARRANTY OF ANY KIND, EXPRESS OR IMPLIED. USERS MUST TAKE FULL RESPONSIBILITY FOR THEIR APPLICATION OF ANY PRODUCTS. IN NO EVENT SHALL CISCO OR ITS SUPPLIERS BE LIABLE FOR ANY INDIRECT, SPECIAL, CONSEQUENTIAL, OR INCIDENTAL DAMAGES, INCLUDING, WITHOUT LIMITATION, LOST PROFITS OR LOSS OR DAMAGE TO DATA ARISING OUT OF THE USE OR INABILITY TO USE THIS MANUAL, EVEN IF CISCO OR ITS SUPPLIERS HAVE BEEN ADVISED OF THE POSSIBILITY OF SUCH DAMAGES.



Corporate Headquarters

Cisco Systems, Inc.
170 West Tasman Drive
San Jose, CA 95134-1706
USA
www.cisco.com
Tel: 408 526-4000
800 553-NETS (6387)
Fax: 408 526-4100

European Headquarters

Cisco Systems International
BV
Haarlerbergpark
Haarlerbergweg 13-19
1101 CH Amsterdam
The Netherlands
www-europe.cisco.com
Tel: 31 0 20 357 1000
Fax: 31 0 20 357 1100

Americas Headquarters

Cisco Systems, Inc.
170 West Tasman Drive
San Jose, CA 95134-1706
USA
www.cisco.com
Tel: 408 526-7660
Fax: 408 527-0883

Asia Pacific Headquarters

Cisco Systems, Inc.
Capital Tower
168 Robinson Road
#22-01 to #29-01
Singapore 068912
www.cisco.com
Tel: +65 317 7777
Fax: +65 317 7799

Cisco Systems has more than 200 offices in the following countries and regions. Addresses, phone numbers, and fax numbers are listed on the Cisco Web site at www.cisco.com/go/offices.

Argentina • Australia • Austria • Belgium • Brazil • Bulgaria • Canada • Chile • China PRC • Colombia • Costa Rica • Croatia • Czech Republic • Denmark • Dubai, UAE • Finland • France • Germany • Greece • Hong Kong SAR • Hungary • India • Indonesia • Ireland • Israel • Italy • Japan • Korea • Luxembourg • Malaysia • Mexico • The Netherlands • New Zealand • Norway • Peru • Philippines • Poland • Portugal • Puerto Rico • Romania • Russia • Saudi Arabia • Scotland • Singapore • Slovakia • Slovenia • South Africa • Spain • Sweden • Switzerland • Taiwan • Thailand • Turkey • Ukraine • United Kingdom • United States • Venezuela • Vietnam • Zimbabwe

© 2013 Cisco Systems, Inc. All rights reserved.

CCENT, Cisco Lumin, Cisco Nexus, the Cisco logo and the Cisco Square Bridge logo are trademarks of Cisco Systems, Inc.; Changing the Way We Work, Live, Play, and Learn is a service mark of Cisco Systems, Inc.; and Access Registrar, Aironet, BPX, Catalyst, CCDA, CCDP, CCVP, CCIE, CCIP, CCNA, CCNP, CCSP, Cisco, the Cisco Certified Internetwork Expert logo, Cisco IOS, Cisco Press, Cisco Systems, Cisco Systems Capital, the Cisco Systems logo, Cisco Unity, EtherFast, EtherSwitch, Fast Step, Follow Me Browsing, FormShare, GigaDrive, HomeLink, Internet Quotient, IOS, iPhone, iQ Expertise, the iQ logo, iQ Net Readiness Scorecard, iQuick Study, LightStream, Linksys, MeetingPlace, MGX, Networking Academy, Network Registrar, *Packet*, PIX, ProConnect, ScriptShare, SMARTnet, StackWise, The Fastest Way to Increase Your Internet Quotient, and TransPath are registered trademarks of Cisco Systems, Inc. and/or its affiliates in the United States and certain other countries.

All other trademarks mentioned in this document or Website are the property of their respective owners. The use of the word partner does not imply a partnership relationship between Cisco and any other company. (0705R)