

## ROSA™ Reporting – Performance and Trending

### Description

The ROSA™ Element Manager's Reporting Component creates reports for verifying the quality of different services, comparing performance at different network locations and for plotting performance evolution over time.

This component is part of the basic ROSA package and makes it possible to quickly analyze your network performance and service availability to drive preventive maintenance actions by focusing on the weakest part of the network.

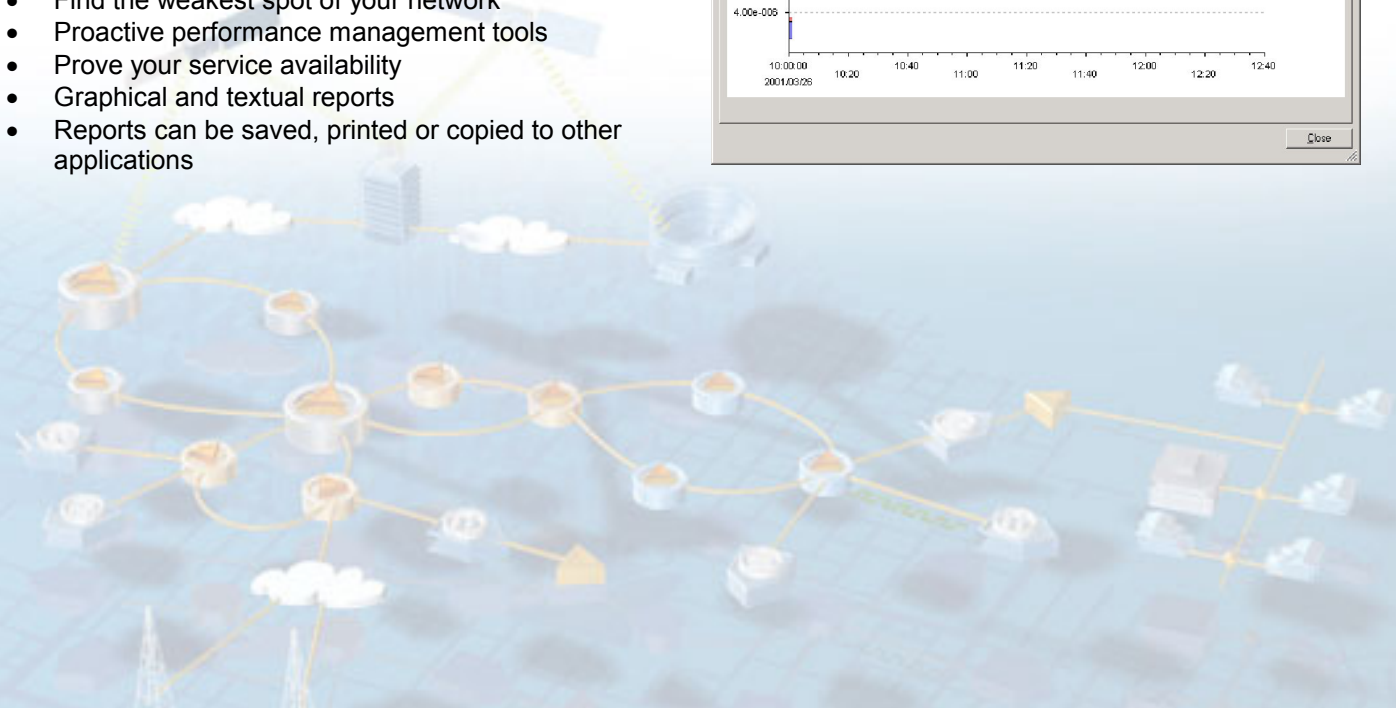
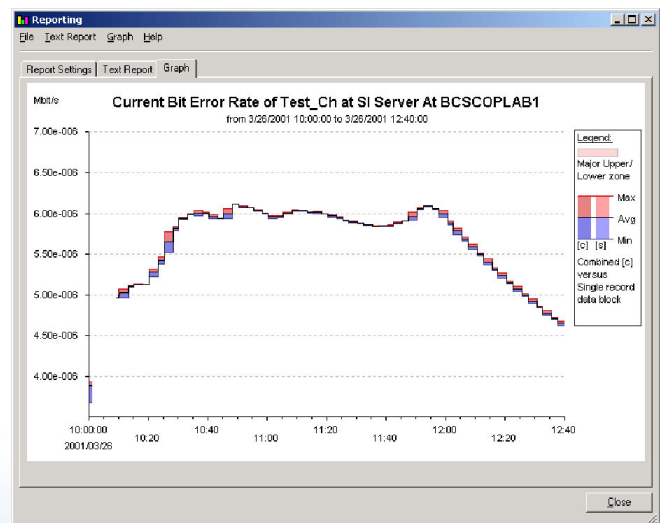
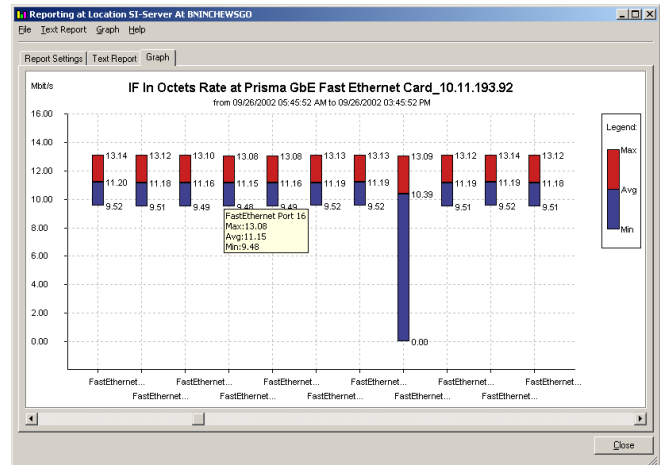
Graphic and text reports can be specifically customized to fit your needs for identifying proactive maintenance opportunities, lowering costs and downtime.

Comparisons can begin with a general query, involving multiple sites and services, and be refined to pinpoint the problem by narrowing the selection and range of data.

The Reporting Component not only focuses on historical data, but can also produce graphs that display the most up-to-date performance measurements.

### Features

- Two types of reports: comparison and trending
- Find the weakest spot of your network
- Proactive performance management tools
- Prove your service availability
- Graphical and textual reports
- Reports can be saved, printed or copied to other applications



## Specifications

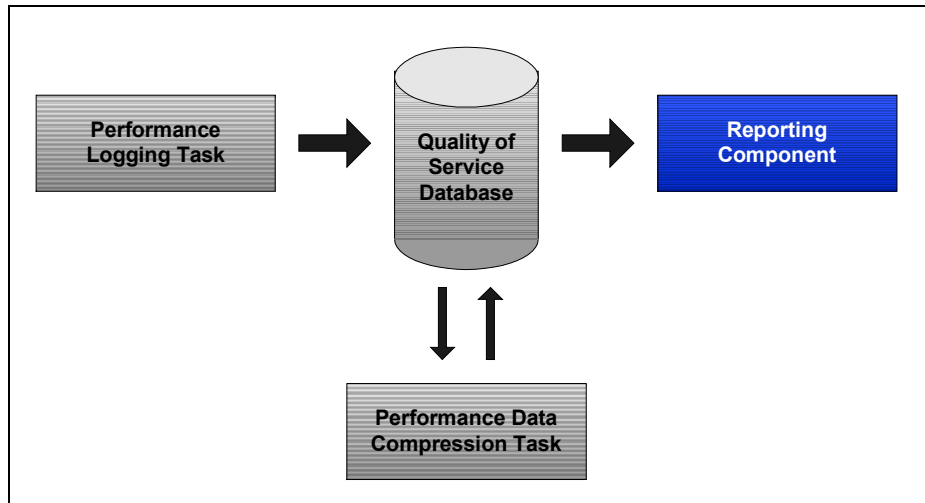
Additional Features	
User Interface tabs	
Report Settings	Allows the selection of the parameter and the service that will be reported. Also the shown time frame and data source can be specified.
Text Report	Shows the textual report.
Graph	Shows the graphical report.
License	Server based license (see ROSA documentation). Part of the basic ROSA package.
Installation	From ROSA CD

Requirements	
ROSA	Installation of ROSA 3.0 or later version
Server	See ROSA User's Guide for information

## Ordering Information

Performance and Trending	Part Number
Performance Logging Task	V9529450
Performance Data Compression Task	V9529652
<b>Note:</b> Reporting Component is part of the basic ROSA package	

## Architecture



Scientific-Atlanta and the Scientific-Atlanta logo are registered trademarks of Scientific-Atlanta, Inc. ROSA is a trademark of Scientific-Atlanta Europe NV. Specifications and product availability are subject to change without notice.  
 © 2003 Scientific-Atlanta, Inc. All rights reserved.

Europe & Asia  
 +32 56 445 000 or +49-6173-928-0  
[www.saeurope.com](http://www.saeurope.com)  
 Americas  
 1-800-722-2009 or 770-236-6900  
[www.scientificatlanta.com](http://www.scientificatlanta.com)

Part Number 7002676 Rev A  
 September 2003