

ROSA™ Performance Logging – Performance and Trending

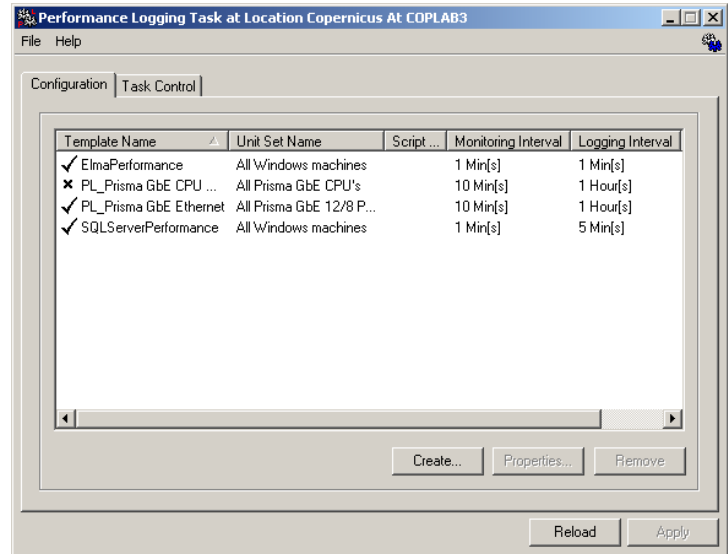
Description

The ROSA™ Element Manager's Performance Logging Task allows the ROSA software to record and store performance data specific to SNMP managed devices. With help of proxy MIBs and plug in Scripts data from devices without SNMP support can also be logged.

Performance analysis, trending capabilities and quality of service data are stored in the Copernicus™ 'Quality of Service' (QoS) database.

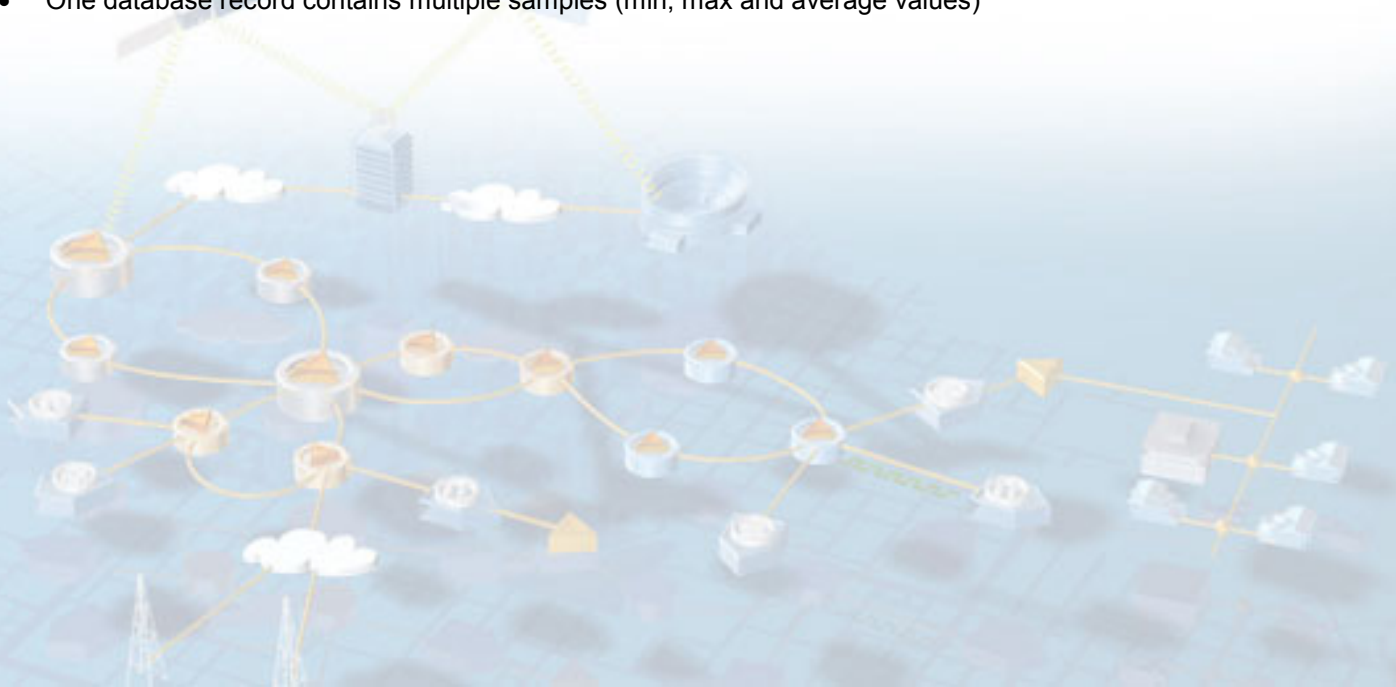
This task records the minimum, maximum and average of the different samples based on a pre-set logging time interval and stores the calculated results in the database, keeping the amount of data limited while not losing exceptional samples.

The data that is logged can be viewed with the ROSA Element Manager's Reporting Component to generate any kind of report, such as comparison and evolution reports.



Features

- Log performance data at user-defined intervals
- Highly customizable (define equipment groups and select SNMP parameters)
- One database record contains multiple samples (min, max and average values)



ROSA Performance Logging



Specifications

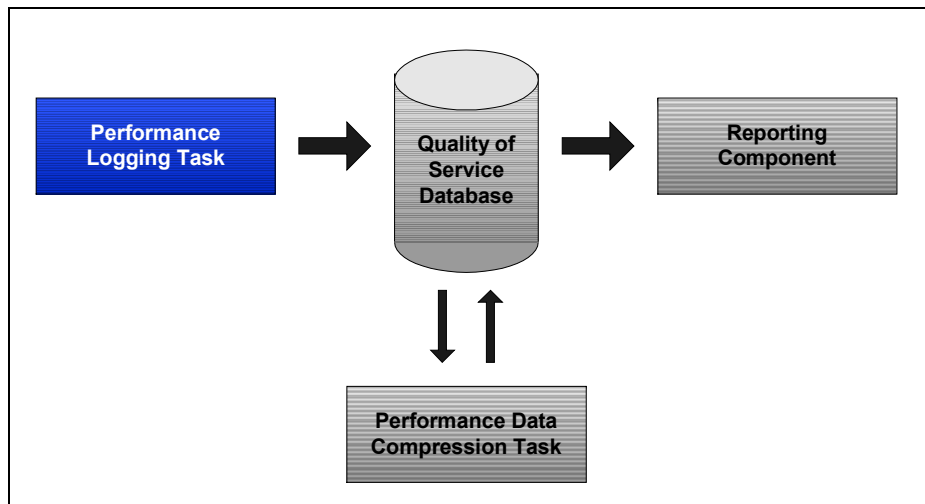
Additional Features	
User Interface tabs	
Configuration	Definition of profiles: each profile is a combination of a template (specifying the logged MIB objects) and a unit set (specifying the devices) of which data is logged at a user-definable interval. It also gives the state of the logging activity.
Task Control	Allows to initialize, start and stop the task. The task can also start automatically after a server reboot.
License	Server based license (see ROSA documentation). Enabled by the supply of the necessary license key(s).
Installation	From ROSA CD

Requirements	
ROSA	Installation of ROSA 3.0 or later version
Server	See ROSA User's Guide for information ROSA Single User or ROSA Copernicus Client/Server (recommended)

Ordering Information

Performance and Trending	Part Number
Performance Logging Task	V9529450
Performance Data Compression Task	V9529652
Note: Reporting Component is part of the basic ROSA package	

Architecture



Scientific-Atlanta and the Scientific-Atlanta logo are registered trademarks of Scientific-Atlanta, Inc.
 ROSA and Copernicus are trademarks of Scientific-Atlanta Europe NV.
 Specifications and product availability are subject to change without notice.
 © 2003 Scientific-Atlanta, Inc. All rights reserved.

Europe & Asia
 +32 56 445 000 or +49-6173-928-0
www.saeurope.com
 Americas
 1-800-722-2009 or 770-236-6900
www.scientificatlanta.com

Part Number 7002677 Rev A
 September 2003