

ROSA™ DVB SI Editor – Headend Applications

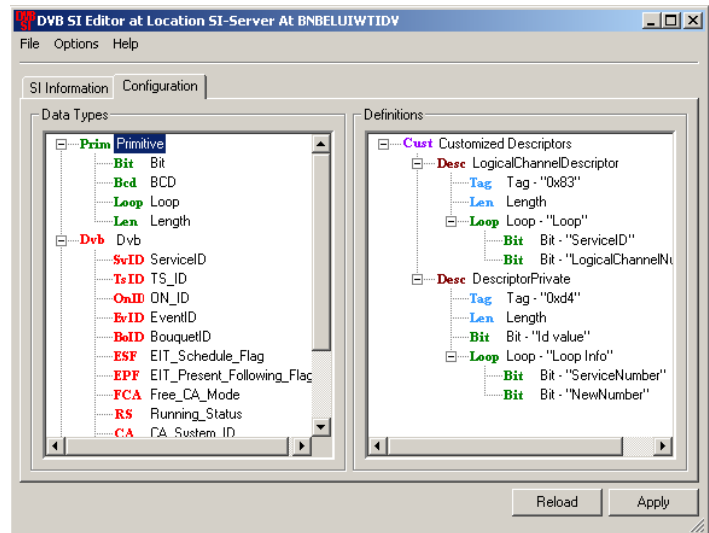
Description

The ROSA™ Element Manager's DVB SI Editor is a user-friendly, offline-editing task for creating and editing DVB PSI and SI tables.

All main PSI/SI tables and descriptors (PAT, PMT, NIT, SDT, BAT, CAT, AIT and EIT P/F) are supported. The DVB SI-Editor automatically recognizes the different tables and descriptors, ensuring correct format and CRC.

Tables are stored to disk in a DVB standardized binary format. The DVB SI Editor creates, saves and forwards the new tables to different Pegasus™ or Pegasus XT™ Re-Multiplexers.

The DVB SI Editor distributes the PSI/SI tables to the re-multiplexers connected to the LAN network.



Features

- Creating and editing DVB PSI and SI tables
- Adding of private descriptors
- Supports Pegasus and Pegasus XT devices



Specifications

Additional Features	
User Interface tabs	
SI Information	Shows the SI Information in a tree structure and is used for creating or editing the DVB PSI/SI tables.
Configuration	Displays the data types and allows the definition of customized descriptors.
License	Server based license (see ROSA documentation). Enabled by the supply of the necessary license key.
Installation	From ROSA CD

Requirements	
ROSA	Installation of ROSA 3.0 or later version
Server	See ROSA User's Guide for information ROSA Copernicus™ Client/Server, Single User or Large System
Hardware	Pegasus or Pegasus XT devices

Ordering Information

Headend Application	Part Number
DVB SI Editor (for Pegasus and Pegasus XT)	V9529637



Scientific-Atlanta and the Scientific-Atlanta logo are registered trademarks of Scientific-Atlanta, Inc.
ROSA, Copernicus, Pegasus and Pegasus XT are trademarks of Scientific-Atlanta Europe NV.
Specifications and product availability are subject to change without notice.
© 2003 Scientific-Atlanta, Inc. All rights reserved.

Europe & Asia
+32 56 445 000 or +49-6173-928-0
www.saeurope.com
Americas
1-800-722-2009 or 770-236-6900
www.scientificatlanta.com

Part Number 7002684 Rev A
September 2003