

## ROSA™ iLynx™ Backbone Model – Transport Solutions

### Description

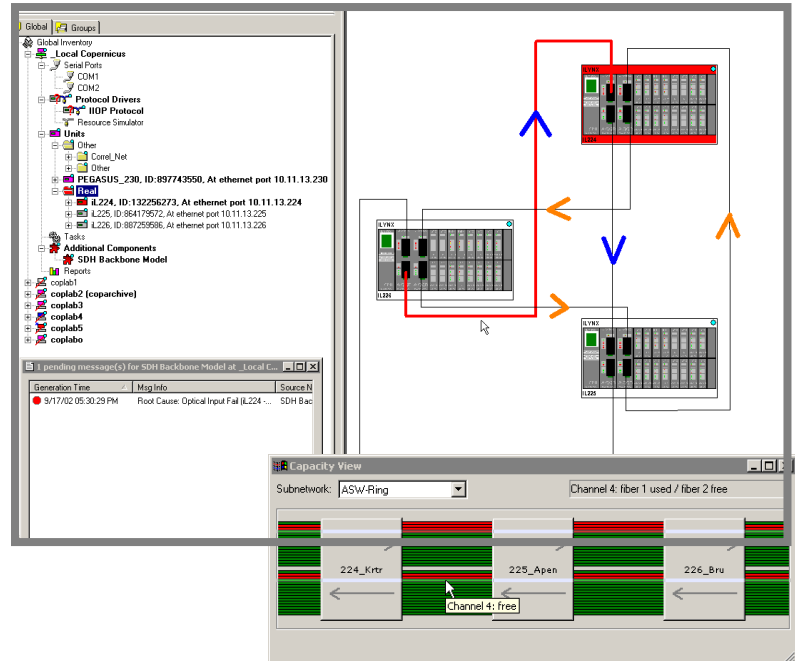
The iLynx™ Backbone Model is a powerful software component offering centralized management of all the connections in an iLynx backbone without need for individual element interaction.

Intuitive graphical user interfaces help you to easily define your network topology, signal paths and protection paths.

Comprehensive overview screens give you an idea of the free/occupied network bandwidth and the impact of network failures on services.

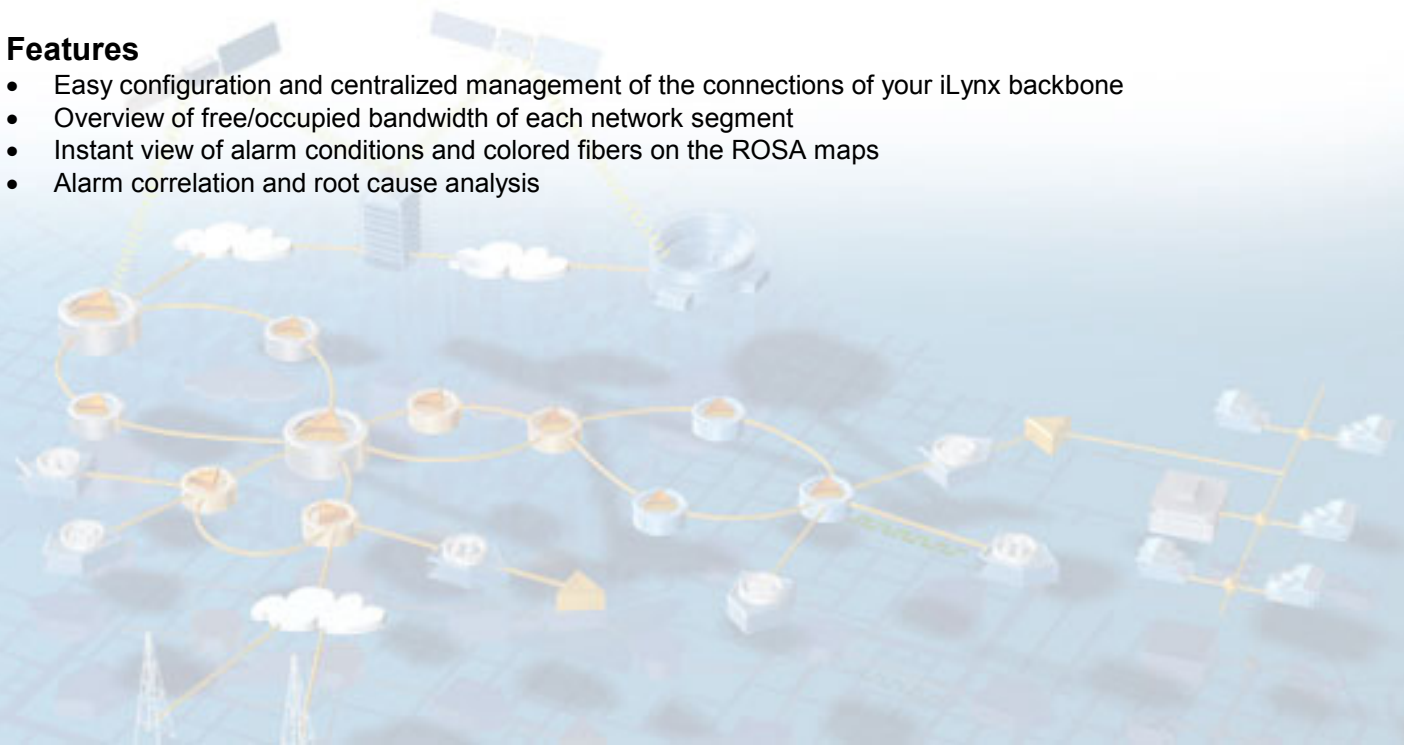
The iLynx Backbone alarm correlation limits the number of alarms to a minimum and reports the root cause, which makes quick intervention and problem solving possible.

Redundancy backup of iLynx tributaries and the connected equipment is supported in the ROSA™ Element Manager's Digital Headend Backup Task.



### Features

- Easy configuration and centralized management of the connections of your iLynx backbone
- Overview of free/occupied bandwidth of each network segment
- Instant view of alarm conditions and colored fibers on the ROSA maps
- Alarm correlation and root cause analysis



# ROSA iLynx Backbone Model



## Specifications

Additional Features	
User Interface	
Network	Tree overview of the network containing subnetworks and gateways. Network elements can be combined to create new subnetworks.
Path	Definition of the paths used in the subnetworks, together with the protection scheme and type (add, drop, pass, ...).
Alarm Correlation	Specification of the alarm correlation settings.
License	Server based license (see ROSA documentation). Enabled by the supply of the necessary license key. 1 license needed for each monitored iLynx rack.
Installation	From ROSA CD

Requirements	
ROSA	Installation of ROSA 3.0 or later version
Server	See ROSA User's Guide for information

## Ordering Information

Transport Solutions	Part Number
iLynx Backbone Model (per monitored iLynx Rack)	V9529757



Scientific-Atlanta and the Scientific-Atlanta logo are registered trademarks of Scientific-Atlanta, Inc.  
ROSA and iLynx are trademarks of Scientific-Atlanta Europe NV.  
Specifications and product availability are subject to change without notice.  
© 2003 Scientific-Atlanta, Inc. All rights reserved.

Europe & Asia  
+32 56 445 000 or +49-6173-928-0  
[www.saeurope.com](http://www.saeurope.com)  
Americas  
1-800-722-2009 or 770-236-6900  
[www.scientificatlanta.com](http://www.scientificatlanta.com)

Part Number 7002686 Rev A  
September 2003