

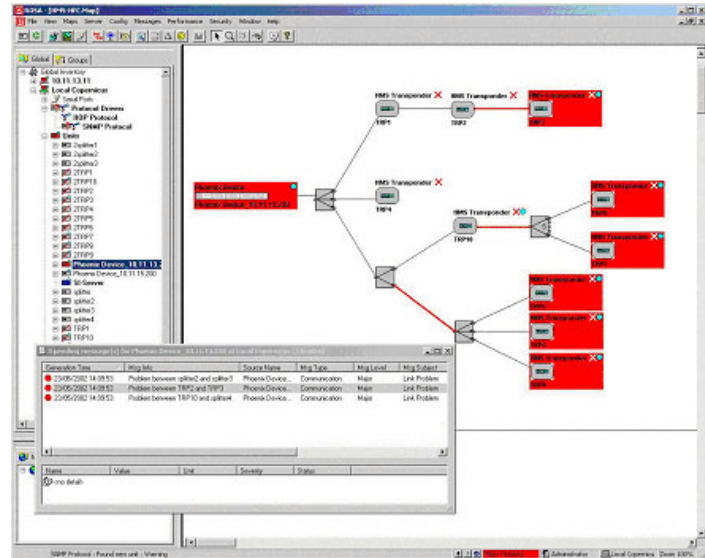
## ROSA™ HFC Alarm Correlation – HFC Network Monitoring

### Description

ROSA™ Element Manager's HFC Alarm correlation limits the number of alarms while pinpointing the root cause at the same time.

This topological alarm correlation module will match each incoming alarm with the network topology model and highlight the alarm's (probable) root cause/location in the alarm log viewers and the ROSA topological maps.

The correlation is executed by means of scripts on the Copernicus™ network management server, based on the alarm correlation rules that can be customized to the operator's network.



### Features

- Limiting the number of alarms extensively
- Pinpoints the root cause alarm
- Correlation of alarms into service availability
- Customizable rules by means of scripts



# ROSA HFC Alarm Correlation



## Specifications

Requirements	
ROSA	Installation of ROSA 3.0 or later version
Server	See ROSA User's Guide for information
Hardware	Phoenix™ HMTS

## Ordering Information

HFC Network Monitoring	Part Number
HFC Alarm Correlation	V9529849



Scientific-Atlanta and the Scientific-Atlanta logo are registered trademarks of Scientific-Atlanta, Inc.  
ROSA, Copernicus and Phoenix are trademarks of Scientific-Atlanta Europe NV.  
Specifications and product availability are subject to change without notice.  
© 2003 Scientific-Atlanta, Inc. All rights reserved.

Europe & Asia  
+32 56 445 000 or +49-6173-928-0  
[www.saeurope.com](http://www.saeurope.com)  
Americas  
1-800-722-2009 or 770-236-6900  
[www.scientificatlanta.com](http://www.scientificatlanta.com)

Part Number 7002687 Rev A  
September 2003