

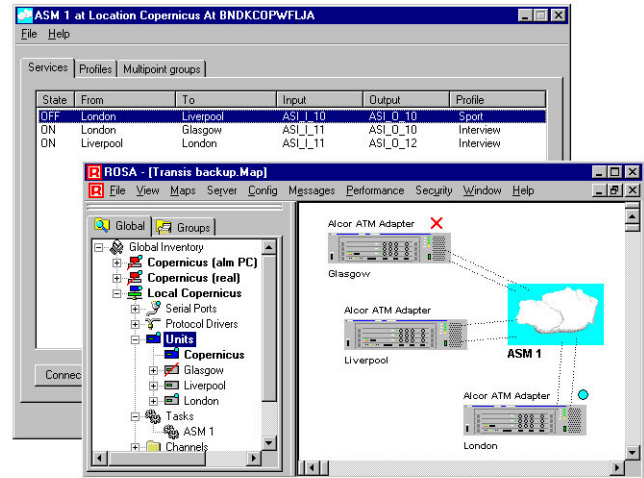
ROSA™ ATM Service Management – Contribution Solutions

Description

The ATM Service Management Component is a service layer in the ROSA™ Element Manager that takes the complexity out of setting up and managing multiple ASI connections across an ATM network.

Before the ROSA ATM Service Management module, operators handling contribution or primary distribution networks were required to call up a graphical user interface for each involved ATM adaptor every time a new connection had to be established, changed or torn down.

Now, with the ATM Service Management Component, this is all easily managed from one intuitive GUI, lowering the risk of making mistakes.



Features

- Manage complex networks with multiple connections between multiple ATM adaptors
- Easy to use graphical user interface
- Supports Alcor™ ATM adaptors and ASI services, supports PVC and SVC connections
- Supports point-to-point and point-to-multipoint connections



ROSA ATM Service Management



Specifications

Additional Features	
User Interface tabs	
Services	Allows adding, editing or deleting of services. These services can be connected or disconnected to a port of the ATM adaptor.
Profiles	Transmission parameters like payload, used Adaptation Layer, FEC, ... are defined in a profile, which is assigned to a service.
Multipoint Groups	Definition of multiple destinations in groups. A multipoint group is used in a network where a service from 1 source is transmitted to several destinations.
License	Server based license (see ROSA documentation). Enabled by the supply of the necessary license key.
Installation	From ROSA CD

Requirements	
ROSA	Installation of ROSA 3.0 or later version
Server	See ROSA User's Guide for information ROSA Copernicus™ Client/Server, Single User or Large System

Ordering Information

Contribution Solutions	Part Number
ATM Service Management (ASM) – License for up to 10 devices (Alcor)	7001760
ATM Service Management (ASM) – License for up to 100 devices (Alcor)	7001761



Scientific-Atlanta and the Scientific-Atlanta logo are registered trademarks of Scientific-Atlanta, Inc.
ROSA and Copernicus are trademarks of Scientific-Atlanta Europe NV.
Alcor is a trademark of Scientific-Atlanta Denmark A/S.
Specifications and product availability are subject to change without notice.
© 2003 Scientific-Atlanta, Inc. All rights reserved.

Europe & Asia
+32 56 445 000 or +49-6173-928-0
www.saeurope.com
Americas
1-800-722-2009 or 770-236-6900
www.scientificatlanta.com

Part Number 7002690 Rev A
September 2003