

## ROSA - Multi-Encoder Manager

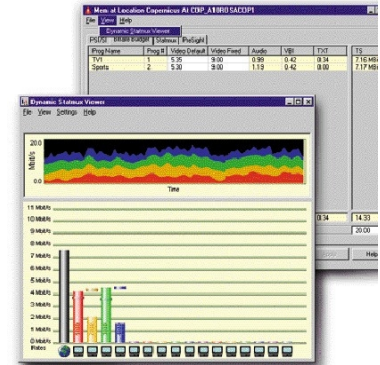
### Description

The ROSA™ Multi-Encoder Manager is a single user interface for management of multiple encoding programs within a digital headend or playout. Using the ROSA Multi-Encoder Manager, you can easily allocate program priorities and calculate bit rate budgets in order to maximize the effectiveness of your system. Furthermore you can get an overview of your settings to ensure an optimal combination of settings.

The ROSA Multi-Encoder Manager is designed to achieve two main objectives:

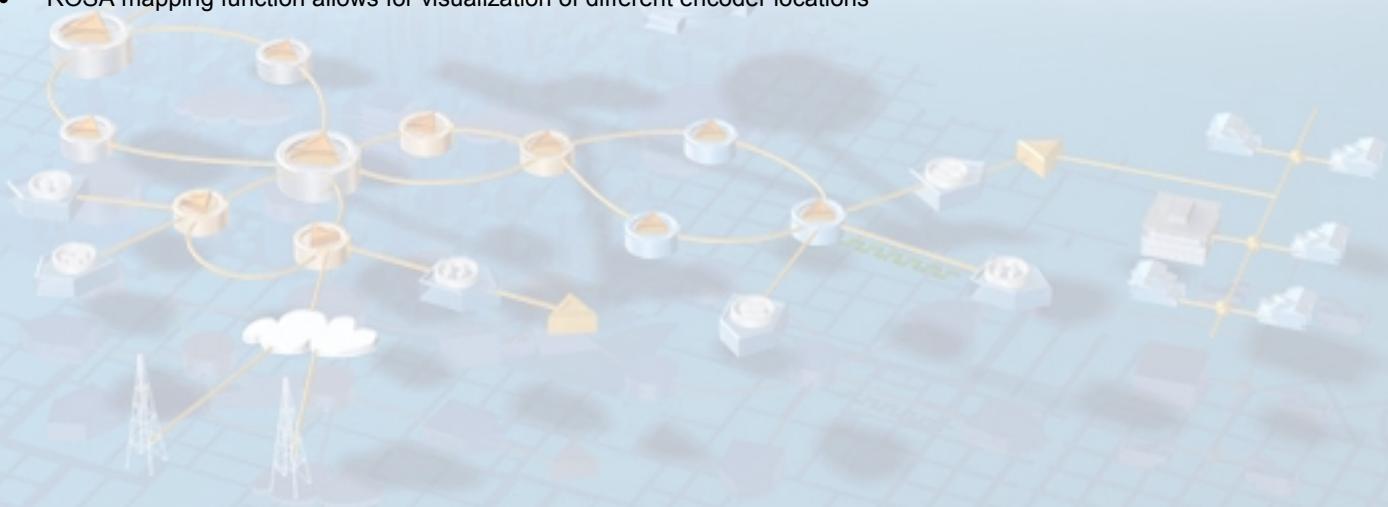
- to provide a single point for viewing management information related to the encoding of multiple services
- to provide an easy to use interface where you can make setting changes that maximize the use of bandwidth resources.

The ROSA Multi-Encoder Manager user interface is integrated with the ROSA management system and supports both the Polaris MKII, Pyxis MKII and Continuum DVP D9030 MPEG-2 Encoders.



### Features

- Rapid set-up of all MPEG-2 encoding channels within a multiplex
- Easy and intuitive management of full stat.-mux. pool
- Flexible configuration of multiple MPEG-2 encoders within a single GUI
- Transport stream budget allows for complete control over bandwidth allocation for individual channels
- Comprehensive on-line help function
- Maximizes use of existing bandwidth resources "Dynamic Statmux Viewer" delivers "real-time" bandwidth usage statistics
- Adaptive pre-filtering levels manually assignable at individual program level
- Option for automatic pre-filtering
- Easy and effective PID management Easily scalable
- ROSA mapping function allows for visualization of different encoder locations



# ROSA Multi-Encoder Manager

## Specifications

Additional Features	
User Interface (tabs)	
PSI/SI	PID allocation management
Bitrate budget	Transport stream bitrate budget comprising video/audio/VBI and data bitrates
PreSight™	Setting of priorities for PreSight™ pre-filtering 1-16, auto and manual control, sub-sampling (horizontal resolution) settings
Statistical Multiplexing	Fixed rate or variable bitrate, assign default rates (to video channels), assign max rates and priorities
Drop down menus	Launch of REGULUS GUI Launch of "Dynamic Statmux Viewer"
License	Server based license (See ROSA documentation) Enabled by the supply of a license key
Installation	From ROSA CD

Requirements	
ROSA	Requires installation of Rosa 3.0 build or later version
Hardware and server	See Rosa documentation



Scientific-Atlanta and the Scientific-Atlanta logo are registered trademarks of Scientific-Atlanta, Inc. Specifications and product availability are subject to change without notice.  
© 2003 Scientific-Atlanta, Inc. All rights reserved.

Europe & Asia  
+45 39 17 00 00 or +49-6173-928-0  
[www.saeurope.com](http://www.saeurope.com)  
North America  
1-800-722-2009 or 770-236-6900  
[www.scientificatlanta.com](http://www.scientificatlanta.com)

Part Number 8986624 Rev A  
February 2003