

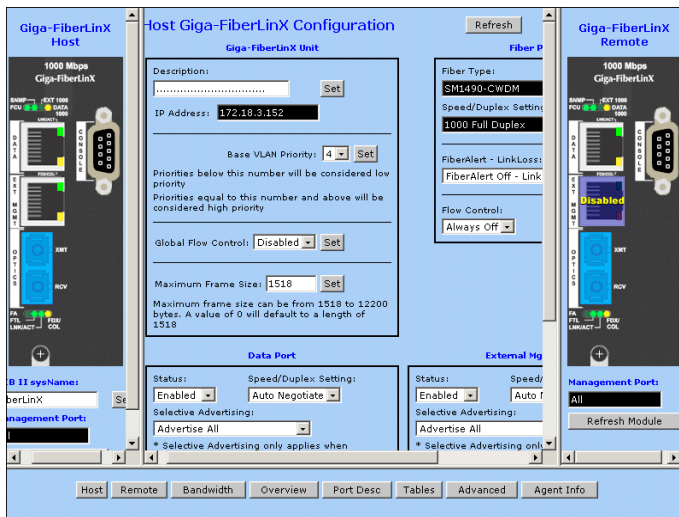
PrismaView Media Converter Management Application Software

Description

Centralized management lies at the heart of virtually every comprehensive LAN/WAN and Internet strategy. It has been proven that network monitoring and proactive fault isolation significantly increase network integrity while reducing downtime.

PrismaView SNMP software management application simplifies configuring, managing and monitoring Prisma Media Converter modules. The PrismaView Graphical User Interface provides an intuitive, real-life representation of all manageable Prisma Media Converter modules and enables network managers to control and monitor device functions, port settings and receive device status information and statistics via SNMP. PrismaView software incorporates an all-in-one management application, a routable configuration utility, SNMP trap manager, device autoscan, automatic software and device firmware downloads and more.

Figure 1. PrismaView Media Converter Software



PrismaView software supports multiple operating systems and is compatible with all SNMP-manageable Prisma Media Converter devices and chassis including: media conversion, fiber mode conversion, bandwidth management, broadband access multiplexing and fiber optic connectivity. PrismaView works as a plug-in module for those companies already using SNMP management software, or PrismaView can work as a stand-alone device manager.*

* PrismaView can only be used to monitor or manage Prisma Media Converter products.

Fast, Easy and Intuitive Operation

- Most applications are up and running in less than 5 minutes
- All-in-one device configuration and SNMP management

PrismaView Supports:

- Media and fiber mode converters
- Fiber optic connectivity products
- LAN/WAN bandwidth management series

PrismaView Enables Network Managers to:

- Enable/disable ports
- Assign unique IP address ranges for each Downlink port
- Allocate and adjust user bandwidth in seconds without visiting remote sites
- Configure ports for speed, duplex, troubleshooting features, etc.
- Configure/edit 802.1Q VLAN
- Receive vital traffic statistics, MIB-II and IMC Networks MIB information
- Set traps and receive instant notification of potential problems

Specifications and Minimum Requirements

PrismaView Windows Requires:

- 29 MB free disk space, 64 MB RAM
- Windows NT 4.0 Service Pack 5
- Windows 2000 Professional
- Windows XP Professional
- Microsoft SNMP Services Installed
- Microsoft IE 4.0 or Higher (Does not have to be default browser)
- Microsoft IIS required for Web Server version

Java Versions Require:

- 25 MB free disk space, 64 MB RAM
- Any OS capable of running Java (Windows 95+, Solaris, Linx)
- Java Runtime v 1.3 (Standalone)
- Java Runtime v 1.2 (Servlet)

Strongly Recommended:

- 128 MB RAM
- Pentium III 650 MHz or Faster
- 17" monitor @ 1024 x 768 resolution or higher

PrismaView Versions

The following table shows the various versions for PrismaView and the platforms and features each supports.

Table 1. PrismaView Versions

Version	Platforms	SNMP GUI	iConfig	Traps	HP OpenView NNM Integration	Features
Windows Standalone	<ul style="list-style-type: none"> Windows NT 4.0 Windows 2000 Windows XP 	Yes	Yes	Yes	No	<ul style="list-style-type: none"> Network Scanning Device Monitoring Auto Updates E-Mail Alerts
Windows Version for HP OpenView NNM	<ul style="list-style-type: none"> Windows NT 4.0 Windows 2000 Windows XP 	Yes	No	No	Yes	<ul style="list-style-type: none"> Integrates into NNM Uses NNM SNMP settings Part of standalone installation
Windows Web Server	<ul style="list-style-type: none"> Windows NT 4.0 Windows 2000 Windows XP Requires Microsoft IIS Web Server 	Yes	No	No	Yes	<ul style="list-style-type: none"> Client is standard Web Browser such as IE and Netscape 4.7 Network outline configurable through separate management application Capable of integrating with NNM
Java Version for HP OpenView NNM	<ul style="list-style-type: none"> Any platform capable of running NNM and Java 1.3 As a standalone - Any platform capable of running NNM and Java 1.3 	Yes	No	No	Yes	<ul style="list-style-type: none"> Integrates into NNM Uses NNM SNMP settings Can run as a standalone without NNM on any platform running Java 1.3
Java Web Servlet	<ul style="list-style-type: none"> Any platform capable of running Java 1.2 or newer 	Yes	No	No	Yes	<ul style="list-style-type: none"> Client is standard Web Browser such as IE and Netscape 4.7 Does NOT need to be run under a Web Server so could be installed on any machine running Java 1.2 or newer Capable of integrating with NNM



Cisco and Cisco Systems are trademarks of Cisco Systems, Inc. and/or its affiliates in the U.S. and other countries. A listing of Cisco's trademarks can be found at www.cisco.com/go/trademarks.

Third party trademarks mentioned are the property of their respective owners.

The use of the word partner does not imply a partnership relationship between Cisco and any other company.

Specifications and product availability are subject to change without notice.

© 2010 Cisco Systems, Inc. All rights reserved.

Cisco Systems, Inc.
1-800-722-2009 or 678-277-1000
www.cisco.com

Part Number 7006514 Rev B
September 2010