

## Cisco GainStar 1 GHz Node with 65/87 MHz Split

The Cisco 1 GHz GainStar Node (GSN) is specifically designed to serve in HFC networks. With its modular design of Optics and RF amplifier electronics, the GSN can provide a full complement of functions required by advanced networks.

The GSN provides excellent forward and reverse path performance combined with high reliability and a user-friendly layout. All new GainStar products share common plug-in accessories and perform to 1 GHz in the forward path. The GSN utilizes GaAsFET technology optimized for superior distortion performance.

The GSN provides two higher-level RF output ports or four lower-level RF output ports in a strand or pedestal mount configuration. The GSN can be field-upgradable from a forward only configuration to a forward and reverse path configuration.

The optical receiver module with a built-in AGC covers a wide optical input range. The AGC increases reliability and decreases nonlinear distortion. Standard plug-in attenuators can be used to adjust gain and equalization. Reverse traffic can be combined and routed to an FP, DFB or CWDM reverse optical transmitter.

Installation of the node is quick and easy. The GSN can be ordered as a complete node or as an upgrade kit for new 1 GHz GainStar amplifiers.

### Features

- Can be set up for 862 MHz or 1 GHz performance
- Modular design for ease of service and maintenance
- Dual higher-level RF output ports
- Each higher-level RF output port is configurable with an onboard signal director to create two lower-level output ports
- AGC optical input range of  $-4$  to  $+2$  dBm
- Standard plug-in attenuators are used to adjust the gain and equalization
- FP, DFB or CWDM transmitter as an available option
- Surge-resistant circuitry ensures resistance to high voltage transients (6kV)
- Thermal RF control minimizes gain movement over temperature
- 10 A current capacity (steady state) and 15 A surge survivability
- Supports ROSA<sup>®</sup> network management system with an optional HMS transponder
- Outdoor housing is IP68 dustproof and watertight
- Strand and pedestal mount housing configurations are available
- All ports are PG11 or 5/8" with included adapter
- RoHS 6 of 6



Manage your network with ROSA and TNCS open standards element management. Get faster mean-time-to-repair, increased uptime, and management that evolves as you provision your networks. US toll-free 1-800-722-2009. EMEA +32 56 445 445. [www.scientificatlanta.com/ROSA](http://www.scientificatlanta.com/ROSA)

Figure 1. Cisco GainStar 1 GHz Node Strand

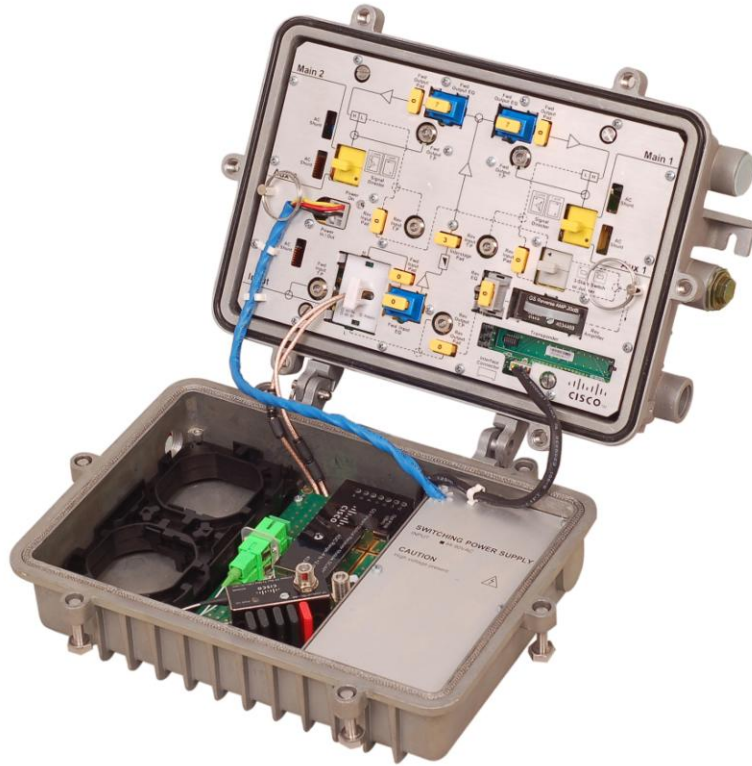


Figure 2. Cisco GainStar 1 GHz Node Pedestal

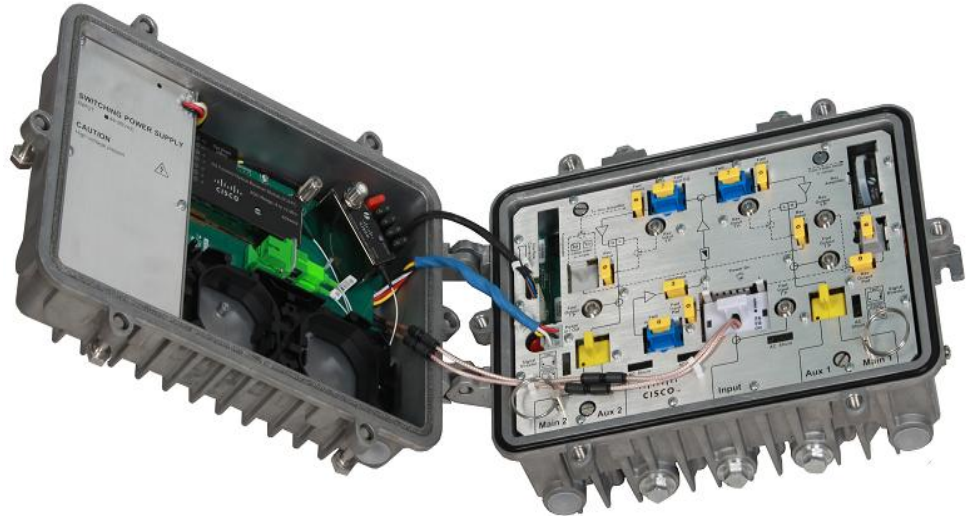
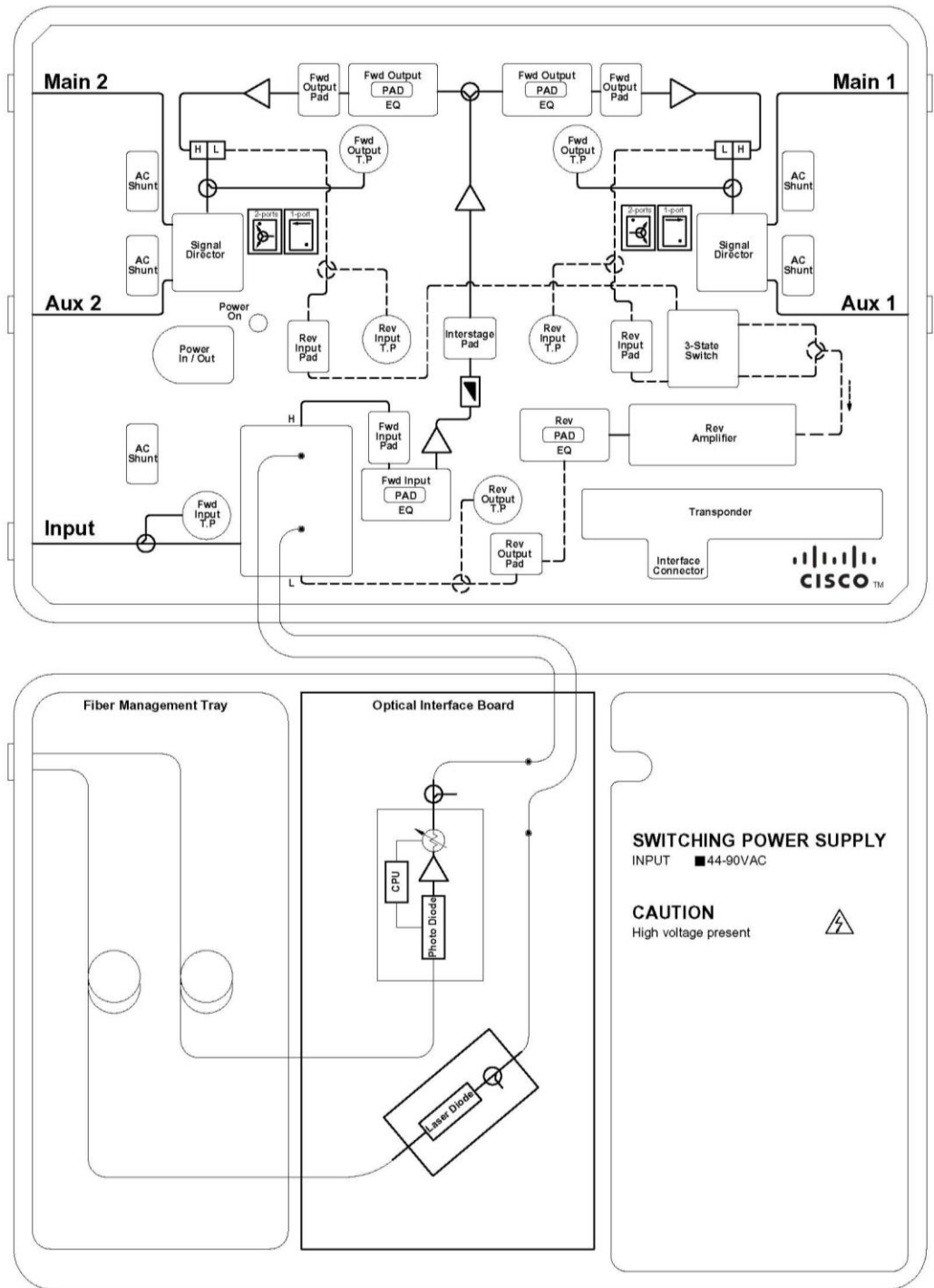


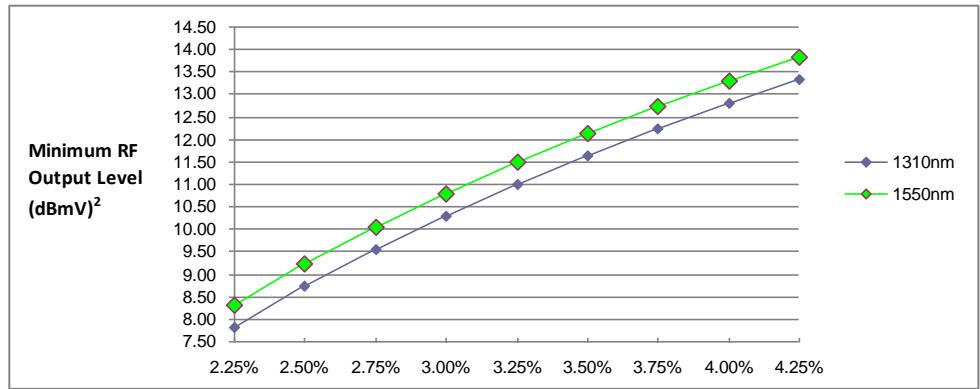
Figure 3. Block Diagram



## Specifications

**Table 1.** Optical Section Specifications

Item	Value
<b>Forward Receiver Module</b>	
Wavelength	1310 and 1550 nm
Optical AGC Range	-4 to +2 dBm
Optical AGC Control Stability	±1.0 dB
Pass Band	50–1000 MHz
Frequency Response <sup>1</sup>	±0.5 dB
Tilt (±1.0 dB)	0 dB
Equivalent Input Noise	≤ 8 pA/√Hz
RF Output Level @ 0 dBm Optical Input <sup>2</sup>	Refer to chart below (dBmV)



**Notes:**

1. For forward receiver module only. Does not include the frequency response contributions from forward optical transmitter.
2. Minimum receiver RF output level for the stated transmitter percent OMI/ch (Optical modulation index per channel), with receiver optical input power of 0 dBm.

**Table 2.** Forward RF Section Specifications

Item	Value			
<b>Forward RF</b>				
Frequency Range	87–862 MHz		87–1000 MHz	
RF Reference Output Level @...	2 ports	4 ports	2 ports	4 ports
1000 MHz	50.0 dBmV	46.5 dBmV	50.0 dBmV	46.5 dBmV
862 MHz	48.3 dBmV	44.8 dBmV	47.9 dBmV	44.4 dBmV
750 MHz	46.7 dBmV	43.2 dBmV	46.2 dBmV	42.7 dBmV
650 MHz	45.2 dBmV	41.7 dBmV	44.6 dBmV	41.1 dBmV
550 MHz	38.0 dBmV	34.5 dBmV	43.0 dBmV	39.5 dBmV
87 MHz			36.0 dBmV	32.5 dBmV
Internal Tilt <sup>1</sup>	12 ±1 dB @ 862 MHz		14 ±1 dB @ 1 GHz	
Gain <sup>2,3</sup>	40 dB, 2 ports 36.5 dB, 4 ports			
Frequency Response	±0.75 dB			
Output Return Loss	≥ 16 dB			
RF Output Test Point	–20 ±1 dB, 2 ports –16.5 ±1 dB, 4 ports			
Hum	65 dB @10 A			
Noise Figure <sup>2,3</sup>	< 9 dB			
Distortion @ 79 NTSC + Digital <sup>3,4,5</sup>				
CTB	72 dB			
CSO	65 dB			
XMOD	66 dB			
Distortion @ 59 PAL D/K + Digital <sup>3,4,5</sup>				
CTB	68 dB			
CSO	64 dB			
Distortion @ 42 CENELEC <sup>3,4</sup>				
CTB ≥ 66 dB	110 dBμV			
CSO ≥ 60 dB	109 dBμV			
Notes:				
1. Forward internal tilt specified is primarily due to an on-board equalizer 6 dB (862 MHz band) or 7 dB (1 GHz band) and a factory configured 6 dB (862 MHz band) or 7 dB (1GHz band) linear output equalizer.				
2. Forward Gain measured with 0 dB input EQ and 0 dB input pad.				
3. With 3 dB interstage Pad installed for 1 GHz, 2 dB interstage Pad installed for 862 MHz				
4. Tilt 12 dB @ 862 MHz and 14 dB @ 1 GHz.				
5. Distortion performance reference output level is 50 dBmV (2 ports). Digital refers to 550 MHz to 862 MHz or 1 GHz loading with QAM carriers at -6 dB relative to analog CW carrier levels.				

**Table 3.** Forward Insertion Loss

Item	Value
Optical Interface Board Forward Insertion Loss* (not including diplexer filter unit Insertion Loss)	1.0 dB
*Note: Insertion loss from optical receiver RF output to launch amplifier RF input. Subtract this loss from the launch amplifier operational gain to determine forward station gain from optical receiver output to station output.	

**Table 4.** Reverse RF Section Specifications

Item	Value
<b>Reverse RF</b>	
Frequency Range	5–65 MHz
Frequency Response	±0.75 dB
Gain <sup>1,3</sup>	20 dB, 2 ports 16.5 dB, 4 ports
Hum	65 dB @ 10 A
Input Return Loss	≥ 16 dB
Test Point	–20 ±1 dB, 2 ports –23.5 ±1 dB, 4 ports
Noise Figure <sup>1,3</sup>	< 9 dB
Optional Reverse 3-state Switch <sup>2</sup>	0, –6 dB, Off
Notes: Unless otherwise noted, specifications reflect typical performance and are referenced to 20°C.	
1. Reverse Gain and Noise Figure measured with 0 dB EQ, 0 dB input pad, and 0 dB output pad.	
2. Controlled by HMS Transponder.	
3. If 3-state switch is installed, reduce Gain by 2 dB, and increase Noise Figure by 2 dB.	

**Table 5.** Reverse Transmitter Module Specifications

Transmitter Module	FP Laser	DFB Laser	CWDM Laser
Wavelength	1310 nm	1310 nm	1470 nm, 1490 nm, 1510 nm, 1530 nm, 1550 nm, 1570 nm, 1590 nm, 1610 nm.
Pass Band	5–100 MHz	5–100 MHz	5–200 MHz
Frequency Response <sup>1</sup>	±0.5 dB	±0.5 dB	±0.5 dB
Input Return Loss	≥ 16 dB	≥ 16 dB	≥ 16 dB
Output Optical Power	2.0 dBm	3.0 dBm	3.0 dBm
NPR <sup>2</sup>	15 dB @ 30 dB	20 dB @ 30 dB	25 dB @ 30 dB
RF Test Point relative to transmitter RF input (±1 dB)	–20 dB	–20 dB	–20 dB <sup>3</sup>
Notes:			
1. Frequency response for transmitter module only. Does not include the frequency response contribution of an optical receiver.			
2. NPR test condition: 7 dB Optic Link (15 km fiber, plus passive loss).			
3. 10% OMI when 20 dBmV is detected.			

**Table 6.** Station Delay Characteristics

Station Delay Characteristics			
Forward (Chrominance to Luminance)		Reverse (Group Delay in 1.5 MHz BW)	
Frequency (MHz)	Delay (ns)	Frequency (MHz)	Delay (ns)
112.25–116.68	3	5.0–6.5	35
119.25–123.68	2	6.5–8.0	15
126.25–130.68	2	8.0–9.5	7
		60.5– 62.0	9
		62.0–63.5	12
		63.5–65.0	15

**Table 7.** Electrical Specifications

Item	Value
<b>Electrical</b>	
Max. AC Through Current (continuous)	10 A
Max. AC Through Current (surge)	15 A

**Table 8.** Station Powering Data

Station Powering Data													
	I <sub>DC</sub> *		AC Voltage										
			90	85	80	75	70	65	60	55	50	45	40
1 RX & 1 TX	1.79	AC Current (A)	0.59	0.62	0.65	0.68	0.71	0.76	0.81	0.86	0.93	1.02	1.13
		Power (W)	32.3	32.2	32.1	32.1	32.1	32.1	32.1	32.1	32.1	32.1	32.3

\*Data is based on stations configured for 2-way operation. AC currents specified are based on measurements made with typical CATV type ferro-resonant AC power supply (quasi-square wave),

**Table 9.** Mechanical, Environmental and Other Specifications

Item	Value
<b>Mechanical</b>	
Water/Dust Ingress Rating	IP68
Dimensions (H x W x D)	Strand
	132 x 292 x 225 mm 5.2 x 11.5 x 8.9 in.
Weight	Pedestal
	132 x 306 x 212 mm 5.2 x 12.1 x 8.4 in.
Weight	6 kg
	13.2 lb
<b>Environmental</b>	
Operating Temperature	-40 to +60 °C -40 to +140 °F
Storage Temperature	-40 to +85 °C -40 to +185 °F
<b>Others</b>	
Element Management	ROSA
Compliance	EU RoHS 6/6, IEC/EN 60728-11, IEC/EN 60065, EN60825-1:2007, EN 50083-2, FCC Part 76, Subpart K, CB Scheme Certification w/All National Deviation & CENELEC Common Mods

## Ordering Information

The GainStar Node is available in a wide variety of configurations. This section contains ordering information for required and optional accessories. Consult your Customer Service Representative or Applications Engineer to determine the best configuration for your particular application.

**Table 10.** Ordering Information—Required Accessories

Required Accessories for RF Module	Part Number
Plug-in Pads (attenuators)—Available in 1 dB steps from 0 to 20 dB <ul style="list-style-type: none"> <li>• 1 required for forward input</li> <li>• 2 required for reverse inputs (Not required for forward only configuration)</li> <li>• 1 required for reverse output (Not required for forward only configuration)</li> </ul>	4036021 (0 dB) sequentially through 4036041 (20 dB)
Plug-in Forward Equalizer—Available from 0 to 14 dB <ul style="list-style-type: none"> <li>• 1 required for forward input; 1 Pad also required and plugged into EQ               <ul style="list-style-type: none"> <li>862 MHz platform:                   <ul style="list-style-type: none"> <li>GainStar Forward Linear Equalizer 0 to 4 dB</li> <li>GainStar Forward Linear Equalizer 5 to 9 dB</li> <li>GainStar Forward Linear Equalizer 10 to 14 dB</li> </ul> </li> <li>1000 MHz platform:                   <ul style="list-style-type: none"> <li>GainStar Forward Linear Equalizer 0 to 4 dB</li> <li>GainStar Forward Linear Equalizer 5 to 9 dB</li> <li>GainStar Forward Linear Equalizer 10 to 14 dB</li> </ul> </li> </ul> </li> </ul>	4034456 4034457 4034458 4034459 4034460 4034461



**Table 11.** Ordering Information—Optional Accessories

Optional Accessories	Part Number
<b>Optical Transmitter</b>	
GainStar 1310 nm FP Optical Transmitter 2 dBm, with SC/APC	4034446
GainStar 1310 nm FP Optical Transmitter 2 dBm, with FC/APC	4034448
GainStar 1310 nm DFB Optical Transmitter 3 dBm, with SC/APC	4034447
GainStar 1310 nm DFB Optical Transmitter 3 dBm, with FC/APC	4034449
GainStar 1470 nm CWDM Optical Transmitter 3 dBm, with SC/APC	4039243
GainStar 1490 nm CWDM Optical Transmitter 3 dBm, with SC/APC	4039244
GainStar 1510 nm CWDM Optical Transmitter 3 dBm, with SC/APC	4039245
GainStar 1530 nm CWDM Optical Transmitter 3 dBm, with SC/APC	4039246
GainStar 1550 nm CWDM Optical Transmitter 3 dBm, with SC/APC	4039247
GainStar 1570 nm CWDM Optical Transmitter 3 dBm, with SC/APC	4039248
GainStar 1590 nm CWDM Optical Transmitter 3 dBm, with SC/APC	4039249
GainStar 1610 nm CWDM Optical Transmitter 3 dBm, with SC/APC	4039250
<b>Reverse Amplifier Module</b>	
GainStar Reverse Amplifier Module, 20dB Gain	4034469
<b>Reverse Equalizer</b>	
Plug-in Reverse Equalizer—Available from 0 to 10 dB (Not required for forward only configuration) 0 to 5 dB EQ (4034462) and 0 dB Pad (4036021) are provided—Other values must be ordered.	
<ul style="list-style-type: none"> <li>• 1 required for reverse input; 1 Pad also required and plugged into EQ</li> </ul> 65 MHz platform: <ul style="list-style-type: none"> <li>GainStar Reverse Cable Equalizer 0 to 5 dB</li> <li>GainStar Reverse Cable Equalizer 6 to 10 dB</li> </ul>	4034462 4034463
<b>Related Equipment</b>	
GainStar 3-state Switch	4034472
GainStar HMS Transponder	4034731
RF Test Probe	1010409
Plug-in 75 ohm Pad	4036140

When upgrading from forward only to a forward and reverse, the Reverse Optical Transmitter, Reverse Amplifier Module, Reverse Equalizer with PAD, Reverse input PAD, and Reverse output PAD accessories are required.



Cisco and the Cisco logo are trademarks or registered trademarks of Cisco and/or its affiliates in the U.S. and other countries. A listing of Cisco's trademarks can be found at [www.cisco.com/go/trademarks](http://www.cisco.com/go/trademarks).

Third party trademarks mentioned are the property of their respective owners.

The use of the word partner does not imply a partnership relationship between Cisco and any other company. (1009R)

Specifications and product availability are subject to change without notice.

© 2010, 2012 Cisco and/or its affiliates. All rights reserved.

Cisco Systems, Inc.  
800 722-2009 or 678 277-1120  
[www.cisco.com](http://www.cisco.com)

Part Number 7017826 Rev E  
June 2012